



BULB OUTDOOR BOLLARD

► **DESIGN** - BULB OUTDOOR BOLLARD LIGHT WITH DECORATIVE RING has a modern design with effective illumination. This E26 base fixture is made from die-cast aluminum and a tempered glass cover.

► **DECORATIVE TRANSPARENT RINGS** - give the fixtures fresh appearance and provide great side-light effect.

► **BULBS** - The fixture includes a standard E26 medium base. We recommend to use LED A19 bulb.

► **APPLICATION** - The fixture is rated for Wet Locations, making it perfect for outdoor landscaping applications such as walkways, courtyards, and backyards.

► **ADVANTAGES** - ASD provides a 5-year limited warranty along with ETL certification to guarantee top quality products and safety!

Catalog number	
Notes	
Type	



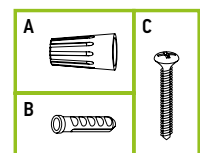
Model	Size	Number of lights	Bulb type	Finish	Dimensions (LxWxH)
BLC ROUND					
ASD-BLC-R12B-BK	12 inch	1 light	E26 60W max	Black	5-1/2" x 5-1/2" x 11-13/16"
ASD-BLC-R24B-BK	24 inch	1 light	E26 60W max	Black	5-1/2" x 5-1/2" x 23-5/8"
BLC SQUARE					
ASD-BLC-S12B-BK	12 inch	1 light	E26 60W max	Black	4-3/4" x 4-3/4" x 11-13/16"
ASD-BLC-S24B-BK	24 inch	1 light	E26 60W max	Black	4-3/4" x 4-3/4" x 23-5/8"

PRODUCT SPECIFICATIONS:

Construction & Materials		Regular and voluntary certifications	
Housing	Aluminum	5-year limited warranty	
Lens	Glass	cETLus certified 4001256	
Finish	White, Stainless steel, Oil rubbed bronze, Black		
Weight	ASD-BLC-R12B-BK	2.7 lbs (1.2 kg)	
	ASD-BLC-R24B-BK	4.3 lbs (2 kg)	
	ASD-BLC-S12B-BK	2.4 lbs (1.1 kg)	
	ASD-BLC-S24B-BK	3.6 lbs (1.7 kg)	
Environmental system			
Work environment	Suitable for Wet Locations		
Operating temperature	-40°F to 113°F (-40°C to 45°C)		
Electrical system			
Input voltage	120 V		
Light source type	Incandescent/LED/CFL bulb		
Bulb base type	E26 medium		
Maximum bulb wattage	60W		
Maximum wattage	60W		

PACKAGE CONTENTS:

Description	Q-ty
Bulb Outdoor Bollard	1
Wire nut (A)	3
Anchor (B)	3 for BLC-R; 4 for BLC-S
Self-taping screw (C)	3 for BLC-R; 4 for BLC-S
Box	1



For most up-to-date spec sheets please refer to asd-lighting.com



BULB OUTDOOR BOLLARD

INSTALLATION GUIDE

IMPORTANT SAFETY INFORMATION:

Please read all the instructions below before installation.

- ▶ Make sure that the supply voltage corresponds to the rated product voltage.
- ▶ The product must be installed by a qualified electrician in accordance with the National Electrical Code and corresponding local codes.
- ▶ If the product is damaged, do not use it.

⚠ WARNING

RISK OF PERSONAL INJURY – READ and follow all WARNINGS and installation instructions. Keep or give to the owner for future reference.

Risk of cuts: Wear gloves to prevent cuts or abrasions when removing from carton, handling, installing, and maintaining this product.

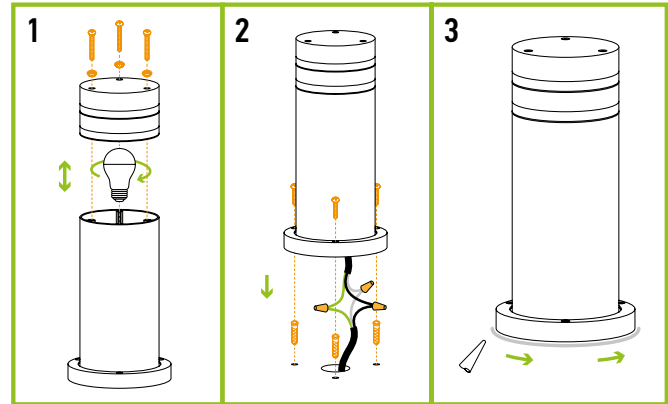
Risk of electric shock: This product must be installed in accordance with the applicable installation code by a person familiar with the construction and operation of the product and the hazards involved.

Risk of Fire: Minimum 194°F supply conductors. Consult a qualified electrician to ensure correct branch circuit conductor.

ASD® assumes no responsibility for claims arising out of improper or careless installation or handling of this product.

INSTALLATION STEPS:

1. Remove the lid, install the bulbs (A19/60W max) and close the lid. Put a waterproof gasket on each mounting screw.
2. Drill appropriate holes for the anchors on the mounting surface: 3 for round, 4 for square fixture. Connect the wires: Black to Black, White to White, Green to Green. Secure the connection with wire nuts. Attach the fixture body using anchor screws.
3. For outdoor locations please use silicone (not included) shown in the picture below.



ORDERING INFORMATION

Model	UPC	Pcs. per carton	Carton size	Carton weight
BLC ROUND				
ASD-BLC-R12B-BK	810128116367	1	7.5" x 7.5" x 14.4"	3.3 lbs
ASD-BLC-R24B-BK	810128116374	1	7.5" x 7.5" x 26.2"	5.2 lbs
BLC SQUARE				
ASD-BLC-S12B-BK	810128116381	1	6.7" x 6.7" x 14.4"	2.9 lbs
ASD-BLC-S24B-BK	810128116398	1	6.7" x 6.7" x 26.2"	4.1 lbs

For most up-to-date spec sheets please refer to asd-lighting.com