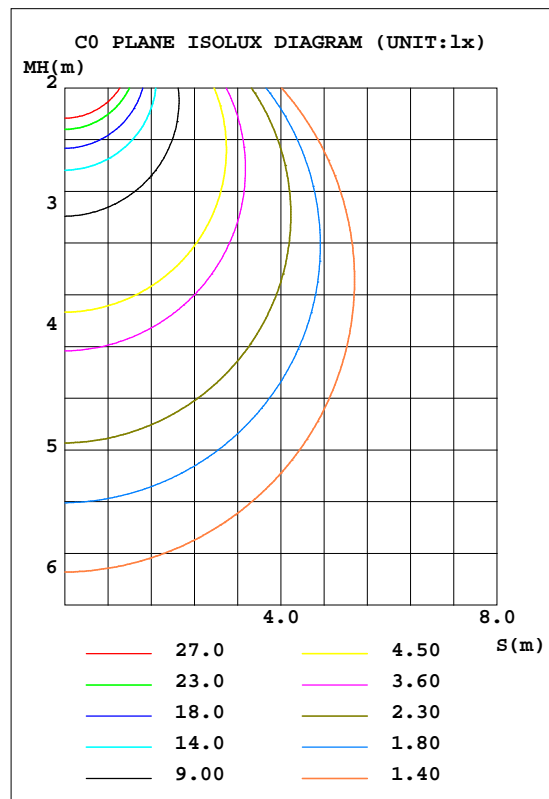
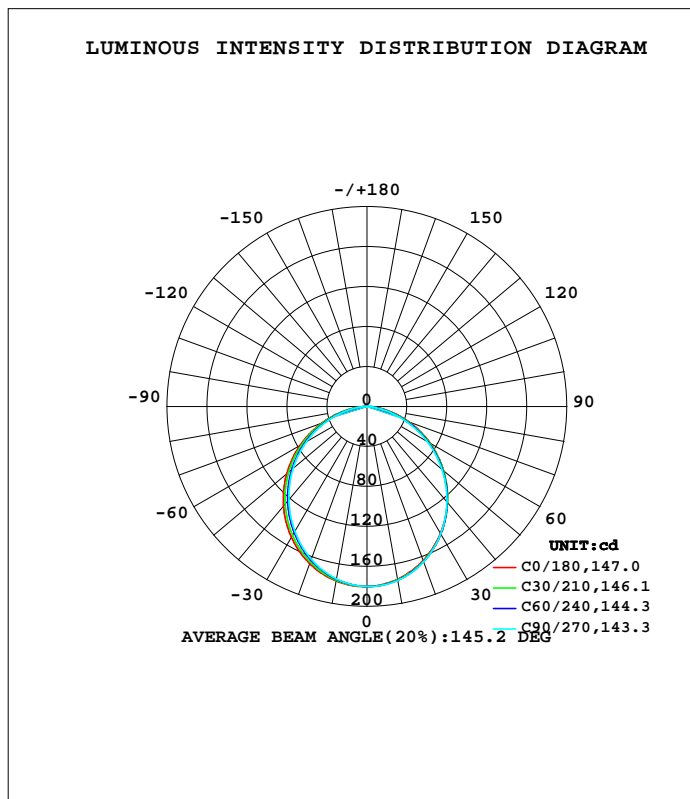


LUMINAIRE PHOTOMETRIC TEST REPORT

Test:U:120.01V I:0.0921A P:8.8521W PF:0.8011 Freq:59.98Hz Lamp Flux:484.97x1 lm		
NAME: ASD-UCS-18D8CC-XX 3000K	TYPE:	WEIGHT:
SPEC.:	DIM.:	SERIAL No.:
MFR.: ASD Lighting Corp	SUR.:	Shielding Angle:

DATA OF LAMP		PHOTOMETRIC DATA Eff: 54.79 lm/W			
MODEL	ASD-UCS-18D8CC-XX	I <sub>max</sub> (cd)	180.3	S/MH(C0/180)	1.25
NOMINAL POWER(W)	8	LOR(%)	100.0	S/MH(C90/270)	1.20
RATED VOLTAGE(V)	120	TOTAL FLUX(lm)	484.97	h UP, DN(C0-180)	0.3,48.8
NOMINAL FLUX(lm)	484.97	CIE CLASS	DIRECT	h UP, DN(C180-360)	0.2,50.7
LAMPS INSIDE	1	h up(%)	0.5	CIBSE SHR NOM	1.25
TEST VOLTAGE(V)	120	h down(%)	99.5	CIBSE SHR MAX	1.35



C Range: 0 - 360DEG  
 C Interval: 15.0DEG  
 Test Speed: MEDIUM  
 Temperature:25.3DEG  
 Operators:  
 Test Date:07 October 2020

g Range: 0 - 180DEG  
 g Interval: 0.5DEG  
 Test System:EVERFINE GO-SPEX500\_V1 SYSTEM V2.0.402  
 Humidity:65.0%  
 Test Distance:3.010m [K=1.0000]  
 Remarks:

ZONAL FLUX DIAGRAM

ZONAL FLUX DIAGRAM:

g	C0	C45	C90	C135	C180	C225	C270	C315	g	F zone	F total	%lum,lamp
10	175.5	176.5	176.8	175.9	177.3	176.0	175.2	176.6	0- 10	17.01	17.01	3.51,3.51
20	164.1	165.3	165.4	164.1	167.4	164.6	162.8	165.8	10- 20	48.35	65.36	13.5,13.5
30	146.9	147.9	147.4	146.1	151.2	147.2	144.4	148.7	20- 30	72.26	137.6	28.4,28.4
40	125.1	125.6	124.5	123.4	130.0	125.2	121.8	127.0	30- 40	85.61	223.2	46,46
50	100.1	99.86	98.09	97.18	105.0	100.1	96.48	102.3	40- 50	87.10	310.3	64,64
60	72.75	71.56	69.25	68.45	77.08	72.78	69.58	75.28	50- 60	77.02	387.3	79.9,79.9
70	44.34	42.23	39.45	38.85	47.71	44.48	41.95	47.27	60- 70	57.05	444.4	91.6,91.6
80	17.95	15.24	12.20	12.19	20.05	17.74	15.92	20.50	70- 80	31.10	475.5	98,98
90	0.1265	0.0883	0.0669	0.0950	0.0913	0.0333	0.0201	0.1836	80- 90	7.019	482.5	99.5,99.5
100	0.2429	0.2025	0.1814	0.2125	0.1608	0.1461	0.1322	0.1319	90-100	0.1267	482.6	99.5,99.5
110	0.4123	0.3523	0.3358	0.3646	0.3100	0.2841	0.2703	0.2693	100-110	0.2632	482.9	99.6,99.6
120	0.5687	0.4866	0.4648	0.4975	0.4368	0.4056	0.4093	0.3956	110-120	0.3876	483.3	99.7,99.7
130	0.6355	0.5819	0.5633	0.5986	0.5059	0.4949	0.5030	0.4780	120-130	0.4491	483.7	99.7,99.7
140	0.6254	0.6615	0.6308	0.6653	0.5095	0.5124	0.5574	0.5051	130-140	0.4359	484.2	99.8,99.8
150	0.5899	0.6567	0.7208	0.6345	0.4885	0.4605	0.5777	0.4751	140-150	0.3662	484.5	99.9,99.9
160	0.5352	0.5628	0.6250	0.5260	0.4313	0.3817	0.4345	0.4077	150-160	0.2505	484.8	100,100
170	0.4861	0.5205	0.4979	0.4818	0.4141	0.3909	0.4043	0.4210	160-170	0.1317	484.9	100,100
180	0.4895	0.5186	0.5102	0.5066	0.4885	0.5186	0.5124	0.5100	170-180	0.0444	485.0	100,100
DEG	LUMINOUS INTENSITY:cd									UNIT:lm		

C Range: 0 - 360DEG  
 C Interval: 15.0DEG  
 Test Speed: MEDIUM  
 Temperature:25.3DEG  
 Operators:  
 Test Date:07 October 2020

g Range: 0 - 180DEG  
 g Interval: 0.5DEG  
 Test System:EVERFINE GO-SPEX500\_V1 SYSTEM V2.0.402  
 Humidity:65.0%  
 Test Distance:3.010m [K=1.0000]  
 Remarks:

UGR(Unified Glare Rating) Table

Test:U:120.01V I:0.0921A P:8.8521W PF:0.8011 Freq:59.98Hz Lamp Flux:484.97x1 lm										
NAME: ASD-UCS-18D8CC-XX 3000K					TYPE:			WEIGHT:		
SPEC.:					DIM.:			SERIAL No.:		
MFR.: ASD Lighting Corp					SUR.:			Shielding Angle:		
ceiling/cavity	0.7	0.7	0.5	0.5	0.3	0.7	0.7	0.5	0.5	0.3
walls	0.5	0.3	0.5	0.3	0.3	0.5	0.3	0.5	0.3	0.3
working plane	0.2	0.2	0.2	0.2	0.2	0.2	0.2	0.2	0.2	0.2
Room dimensions	Viewed crosswise					Viewed endwise				
x = 2H y = 2H	8.7	10.2	9.0	10.4	10.6	8.5	10.0	8.7	10.2	10.4
3H	10.1	11.5	10.4	11.7	12.0	9.8	11.1	10.1	11.4	11.6
4H	10.7	12.0	11.0	12.3	12.5	10.2	11.5	10.5	11.8	12.0
6H	11.1	12.3	11.4	12.6	12.9	10.4	11.7	10.8	11.9	12.2
8H	11.2	12.4	11.5	12.7	13.0	10.4	11.6	10.8	11.9	12.2
12H	11.2	12.4	11.6	12.7	13.0	10.4	11.6	10.8	11.9	12.2
4H 2H	9.2	10.5	9.5	10.8	11.1	9.1	10.4	9.4	10.6	10.9
3H	10.8	12.0	11.2	12.3	12.6	10.5	11.7	10.9	12.0	12.3
4H	11.5	12.6	11.9	12.9	13.2	11.1	12.1	11.5	12.4	12.8
6H	12.0	12.9	12.4	13.3	13.7	11.4	12.3	11.8	12.7	13.1
8H	12.2	13.0	12.6	13.4	13.8	11.4	12.3	11.9	12.7	13.1
12H	12.3	13.1	12.7	13.5	13.9	11.4	12.2	11.9	12.6	13.0
8H 4H	11.7	12.6	12.1	12.9	13.3	11.3	12.2	11.7	12.5	12.9
6H	12.3	13.0	12.8	13.5	13.9	11.7	12.4	12.2	12.9	13.3
	12.6	13.2	13.0	13.6	14.1	11.8	12.5	12.3	12.9	13.4
	12.7	13.3	13.2	13.7	14.2	11.8	12.4	12.3	12.8	13.3
	11.7	12.5	12.1	12.9	13.3	11.3	12.1	11.7	12.5	12.9
	12.3	13.0	12.8	13.4	13.9	11.8	12.4	12.2	12.8	13.3
	12.6	13.1	13.1	13.6	14.1	11.9	12.4	12.4	12.9	13.4
Variations with the observer position at spacings:										
S = 1.0H	+ 0.2 / - 0.2					+ 0.2 / - 0.3				
1.2H	+ 0.2 / - 0.3					+ 0.2 / - 0.4				
2.0H	+ 0.2 / - 0.3					+ 0.3 / - 0.3				

12H 4H  
CIE Pub.117, 485.0 lm Total Lamp Luminous Flux Corrected (8log(F/F0) = -2.5)  
6H

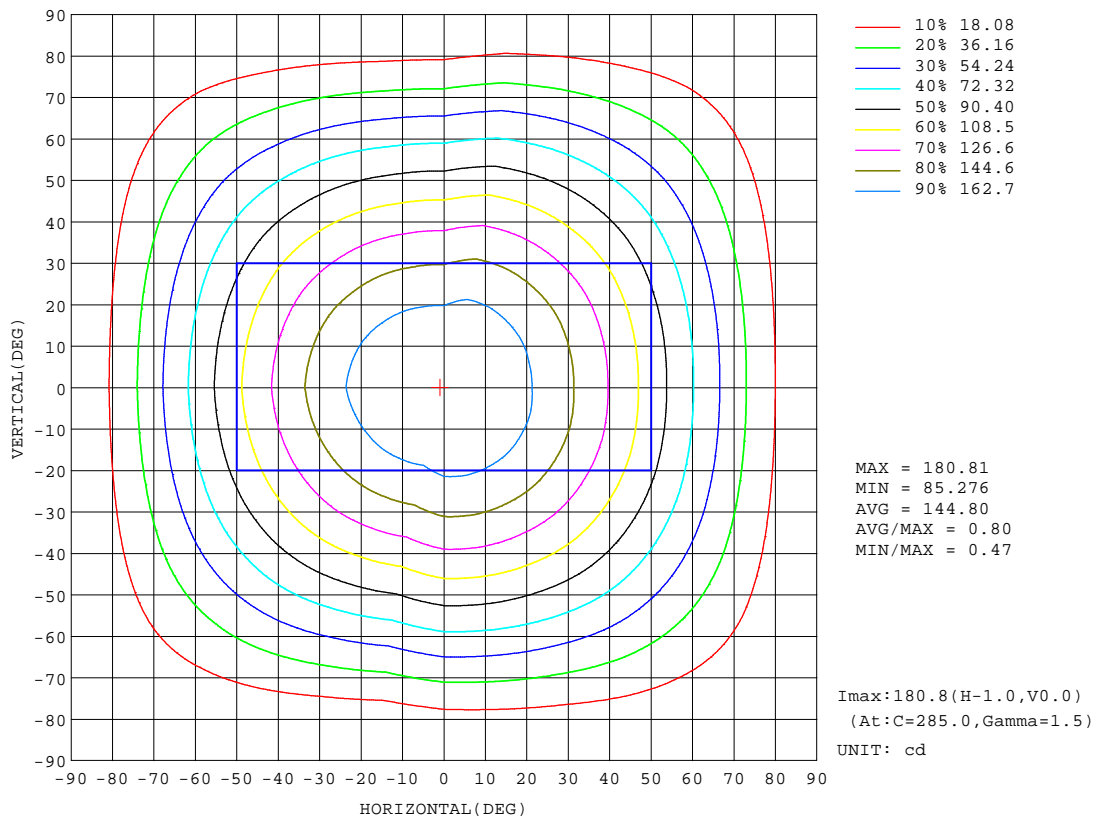
8H

C Range: 0 - 360DEG  
C Interval: 15.0DEG  
Test Speed: MEDIUM  
Temperature:25.3DEG  
Operators:  
Test Date:07 October 2020

g Range: 0 - 180DEG  
g Interval: 0.5DEG  
Test System:EVERFINE GO-SPEX500\_V1 SYSTEM V2.0.402  
Humidity:65.0%  
Test Distance:3.010m [K=1.0000]  
Remarks:

ISOCANDELA DIAGRAM

Test:U:120.01V I:0.0921A P:8.8521W PF:0.8011 Freq:59.98Hz Lamp Flux:484.97x1 lm		
NAME: ASD-UCS-18D8CC-XX 3000K	TYPE:	WEIGHT:
SPEC.:8W	DIM.:	SERIAL No.:
MFR.: ASD Lighting Corp	SUR.:	Shielding Angle:



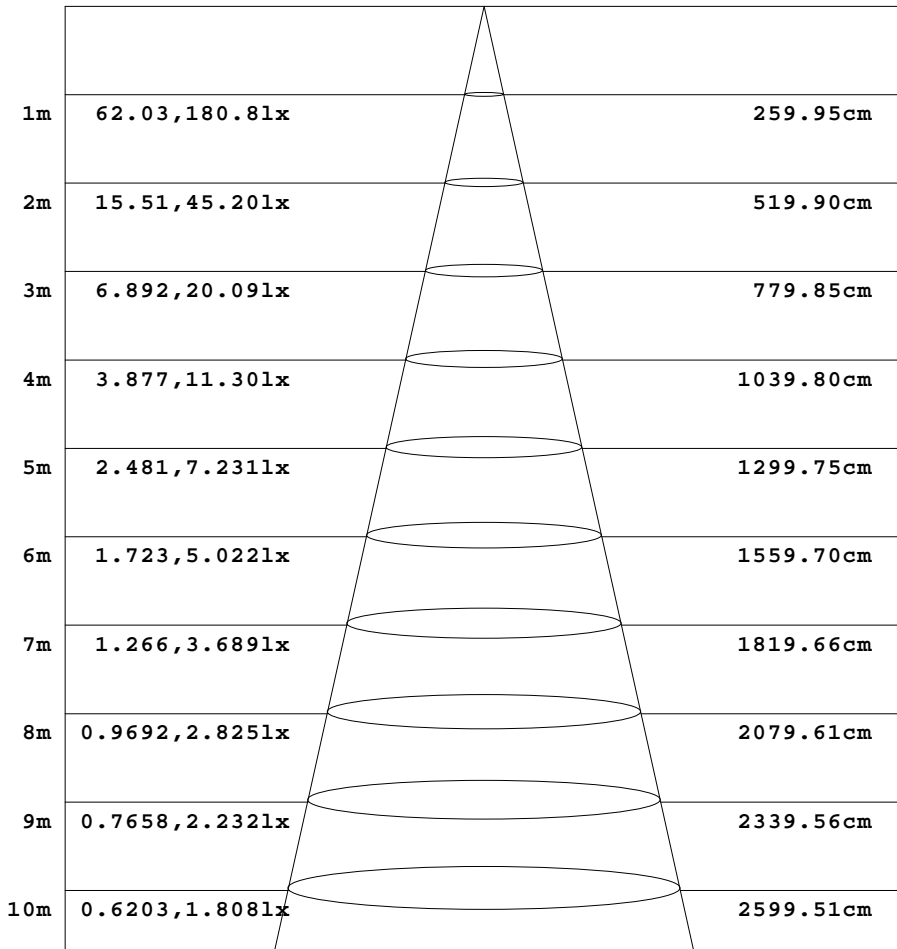
C Range: 0 - 360DEG  
 C Interval: 15.0DEG  
 Test Speed: MEDIUM  
 Temperature:25.3DEG  
 Operators:  
 Test Date:07 October 2020

g Range: 0 - 180DEG  
 g Interval: 0.5DEG  
 Test System:EVERFINE GO-SPEX500\_V1 SYSTEM V2.0.402  
 Humidity:65.0%  
 Test Distance:3.010m [K=1.0000]  
 Remarks:

AAI Figure

Test:U:120.01V I:0.0921A P:8.8521W PF:0.8011 Freq:59.98Hz Lamp Flux:484.97x1 lm		
NAME: ASD-UCS-18D8CC-XX 3000K	TYPE:	WEIGHT:
SPEC.:	DIM.:	SERIAL No.:
MFR.: ASD Lighting Corp	SUR.:	Shielding Angle:

Flux out:331.0 lm



Height                      Eavg, Emax                      Angle:104.85deg                      Diameter

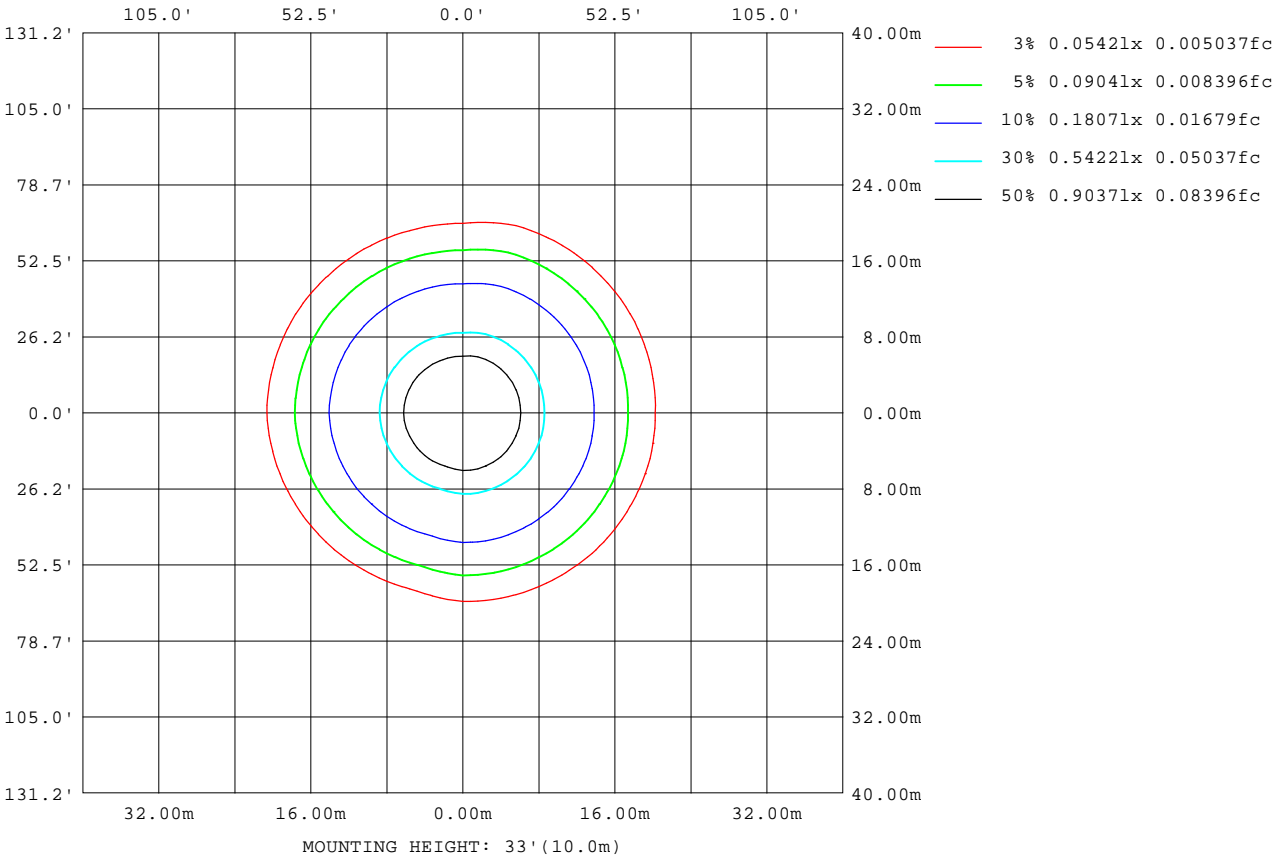
Note:The Curves indicate the illuminated area and the average illumination when the luminaire is at different distance.

C Range: 0 - 360DEG  
 C Interval: 15.0DEG  
 Test Speed: MEDIUM  
 Temperature:25.3DEG  
 Operators:  
 Test Date:07 October 2020

g Range: 0 - 180DEG  
 g Interval: 0.5DEG  
 Test System:EVERFINE GO-SPEX500\_V1 SYSTEM V2.0.402  
 Humidity:65.0%  
 Test Distance:3.010m [K=1.0000]  
 Remarks:

ISOLUX DIAGRAM

Test:U:120.01V I:0.0921A P:8.8521W PF:0.8011 Freq:59.98Hz Lamp Flux:484.97x1 lm		
NAME: ASD-UCS-18D8CC-XX 3000K	TYPE:	WEIGHT:
SPEC.:	DIM.:	SERIAL No.:
MFR.: ASD Lighting Corp	SUR.:	Shielding Angle:



C Range: 0 - 360DEG  
 C Interval: 15.0DEG  
 Test Speed: MEDIUM  
 Temperature:25.3DEG  
 Operators:  
 Test Date:07 October 2020

g Range: 0 - 180DEG  
 g Interval: 0.5DEG  
 Test System:EVERFINE GO-SPEX500\_V1 SYSTEM V2.0.402  
 Humidity:65.0%  
 Test Distance:3.010m [K=1.0000]  
 Remarks:

LED Avg.L Report

Test:U:120.01V I:0.0921A P:8.8521W PF:0.8011 Freq:59.98Hz Lamp Flux:484.97x1 lm		
NAME: ASD-UCS-18D8CC-XX 3000K	TYPE:	WEIGHT:
SPEC.:	DIM.:	SERIAL No.:
MFR.: ASD Lighting Corp	SUR.:	Shielding Angle:

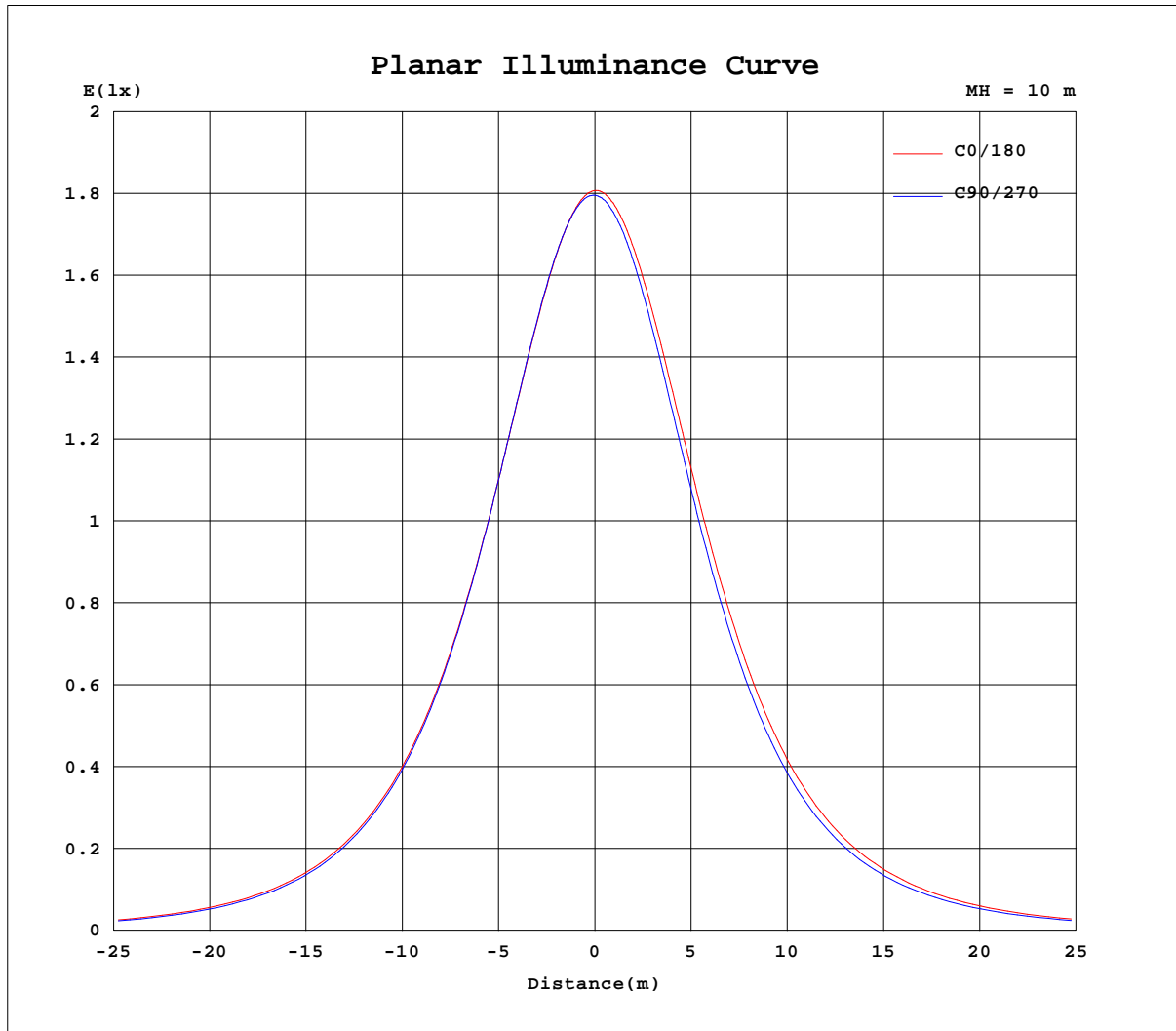
AvgL	cd/m2
L_0~180(65)av	286
L_0~180(75)av	247
L_0~180(85)av	185
L_90~270(65)av	260
L_90~270(75)av	207
L_90~270(85)av	76
L_45(65)av	273
L_45(75)av	226
L_45(85)av	121

Standard: GB/T 29293-2012

C Range: 0 - 360DEG  
 C Interval: 15.0DEG  
 Test Speed: MEDIUM  
 Temperature:25.3DEG  
 Operators:  
 Test Date:07 October 2020

g Range: 0 - 180DEG  
 g Interval: 0.5DEG  
 Test System:EVERFINE GO-SPEX500\_V1 SYSTEM V2.0.402  
 Humidity:65.0%  
 Test Distance:3.010m [K=1.0000]  
 Remarks:

Planar Illuminance Curve



C Range: 0 - 360DEG  
 C Interval: 15.0DEG  
 Test Speed: MEDIUM  
 Temperature: 25.3DEG  
 Operators:  
 Test Date: 07 October 2020

g Range: 0 - 180DEG  
 g Interval: 0.5DEG  
 Test System: EVERFINE GO-SPEX500\_V1 SYSTEM V2.0.402  
 Humidity: 65.0%  
 Test Distance: 3.010m [K=1.0000]  
 Remarks:



LUMINOUS DISTRIBUTION INTENSITY DATA

Test:U:120.01V I:0.0921A P:8.8521W PF:0.8011 Freq:59.98Hz Lamp Flux:484.97xl lm		
NAME: ASD-UCS-18D8CC-XX 3000K	TYPE:	WEIGHT:
SPEC.:	DIM.:	SERIAL No.:
MFR.: ASD Lighting Corp	SUR.:	Shielding Angle:

Table--1

UNIT: cd

C(DEG) g (DEG)	0	15	30	45	60	75	90	105	120	135	150	165	180	195	210	225	240	255	270
0	180	180	180	180	180	180	180	180	180	180	180	180	180	180	180	180	180	180	180
5	179	179	179	179	179	180	180	179	179	179	179	179	180	180	179	179	179	179	179
10	176	176	176	176	177	177	177	175	175	176	176	177	177	177	177	176	176	175	175
15	171	171	171	172	172	172	172	170	170	171	172	173	173	173	172	171	170	170	170
20	164	165	165	165	165	166	165	162	163	164	165	166	167	167	166	165	164	163	163
25	156	157	157	157	157	157	157	153	154	156	157	159	160	159	158	157	155	154	154
30	147	148	148	148	148	148	147	143	144	146	148	150	151	150	149	147	146	145	144
35	137	137	137	137	137	137	137	132	133	135	137	139	141	140	139	137	135	134	133
40	125	126	126	126	125	125	125	120	121	123	126	128	130	129	127	125	124	122	122
45	113	114	113	113	112	112	112	107	108	111	113	116	118	117	115	113	111	110	109
50	100	101	100	99.9	99.0	98.7	98.1	92.8	94.5	97.2	99.7	103	105	104	102	100	98.4	96.8	96.5
55	86.7	87.1	86.3	85.9	84.9	84.6	83.9	78.5	80.2	83.0	85.7	88.9	91.3	90.2	88.9	86.7	85.0	83.4	83.2
60	72.8	73.0	72.0	71.6	70.4	70.0	69.2	63.8	65.6	68.4	71.2	74.5	77.1	76.1	74.9	72.8	71.2	69.7	69.6
65	58.5	58.6	57.5	56.9	55.6	55.1	54.3	48.9	50.7	53.6	56.4	59.7	62.5	61.6	60.6	58.7	57.3	55.9	55.7
70	44.3	44.3	43.0	42.2	40.9	40.4	39.5	34.4	36.1	38.9	41.7	44.9	47.7	47.0	46.3	44.5	43.3	42.0	42.0
75	30.6	30.4	29.0	28.1	26.7	26.1	25.2	20.6	22.2	24.8	27.4	30.6	33.3	32.8	32.2	30.6	29.6	28.5	28.5
80	18.0	17.7	16.2	15.2	13.7	13.0	12.2	8.34	9.73	12.2	14.6	17.6	20.0	19.6	19.3	17.7	16.9	15.8	15.9
85	7.48	6.95	5.46	4.23	2.86	2.21	1.69	0.17	0.39	1.64	3.87	6.55	8.66	8.35	7.61	6.26	5.50	4.78	4.92
90	0.13	0.12	0.11	0.09	0.08	0.07	0.07	0.08	0.09	0.09	0.10	0.11	0.09	0.05	0.04	0.03	0.03	0.03	0.02
95	0.17	0.17	0.16	0.13	0.13	0.12	0.12	0.14	0.15	0.15	0.16	0.16	0.10	0.09	0.09	0.09	0.08	0.08	0.07
100	0.24	0.23	0.22	0.20	0.19	0.18	0.18	0.22	0.22	0.21	0.22	0.22	0.16	0.16	0.15	0.15	0.14	0.14	0.13
105	0.32	0.30	0.30	0.28	0.27	0.26	0.26	0.29	0.29	0.29	0.29	0.29	0.24	0.23	0.22	0.21	0.21	0.21	0.20
110	0.41	0.39	0.37	0.35	0.34	0.34	0.34	0.37	0.37	0.36	0.37	0.37	0.31	0.30	0.29	0.28	0.28	0.27	0.27
115	0.49	0.46	0.45	0.43	0.41	0.40	0.40	0.43	0.43	0.43	0.44	0.44	0.38	0.36	0.36	0.35	0.35	0.34	0.34
120	0.57	0.53	0.51	0.49	0.48	0.47	0.46	0.50	0.50	0.50	0.51	0.51	0.44	0.42	0.42	0.41	0.40	0.40	0.41
125	0.62	0.58	0.57	0.54	0.52	0.52	0.52	0.55	0.54	0.55	0.56	0.55	0.49	0.46	0.46	0.46	0.44	0.45	0.45
130	0.64	0.61	0.61	0.58	0.57	0.57	0.56	0.59	0.59	0.60	0.60	0.58	0.51	0.49	0.48	0.49	0.49	0.50	0.50
135	0.64	0.62	0.63	0.63	0.60	0.60	0.60	0.63	0.63	0.64	0.62	0.59	0.52	0.50	0.49	0.51	0.52	0.53	0.54
140	0.63	0.62	0.64	0.66	0.65	0.64	0.63	0.66	0.67	0.67	0.62	0.59	0.51	0.49	0.49	0.51	0.54	0.55	0.56
145	0.61	0.61	0.63	0.68	0.69	0.70	0.69	0.71	0.70	0.67	0.61	0.58	0.50	0.48	0.47	0.50	0.53	0.56	0.58
150	0.59	0.59	0.61	0.66	0.70	0.72	0.72	0.72	0.69	0.63	0.59	0.56	0.49	0.46	0.44	0.46	0.51	0.55	0.58
155	0.57	0.58	0.58	0.61	0.67	0.72	0.72	0.69	0.62	0.58	0.56	0.54	0.46	0.44	0.43	0.41	0.45	0.50	0.53
160	0.54	0.56	0.55	0.56	0.60	0.63	0.63	0.59	0.56	0.53	0.52	0.52	0.43	0.42	0.40	0.38	0.40	0.42	0.43
165	0.48	0.52	0.52	0.53	0.54	0.55	0.54	0.53	0.51	0.49	0.48	0.47	0.39	0.39	0.38	0.39	0.39	0.40	0.39
170	0.49	0.51	0.53	0.52	0.51	0.51	0.50	0.50	0.48	0.48	0.48	0.47	0.41	0.41	0.40	0.39	0.40	0.40	0.40
175	0.48	0.50	0.52	0.52	0.51	0.52	0.51	0.50	0.50	0.48	0.46	0.46	0.43	0.42	0.42	0.43	0.43	0.43	0.42
180	0.49	0.49	0.50	0.52	0.51	0.50	0.51	0.50	0.49	0.51	0.50	0.49	0.49	0.49	0.50	0.52	0.51	0.50	0.51

C Range: 0 - 360DEG  
 C Interval: 15.0DEG  
 Test Speed: MEDIUM  
 Temperature:25.3DEG  
 Operators:  
 Test Date:07 October 2020

g Range: 0 - 180DEG  
 g Interval: 0.5DEG  
 Test System:EVERFINE GO-SPEX500\_V1 SYSTEM V2.0.402  
 Humidity:65.0%  
 Test Distance:3.010m [K=1.0000]  
 Remarks:

LUMINOUS DISTRIBUTION INTENSITY DATA

Test:U:120.01V I:0.0921A P:8.8521W PF:0.8011 Freq:59.98Hz Lamp Flux:484.97x1 lm		
NAME: ASD-UCS-18D8CC-XX 3000K	TYPE:	WEIGHT:
SPEC.:	DIM.:	SERIAL No.:
MFR.: ASD Lighting Corp	SUR.:	Shielding Angle:

Table--2

UNIT: cd

C(DEG) g (DEG)	285	300	315	330	345														
0	180	180	180	180	180														
5	180	180	179	179	179														
10	177	177	177	176	176														
15	173	172	172	172	171														
20	166	166	166	165	165														
25	158	158	158	158	157														
30	149	149	149	149	148														
35	138	139	138	138	138														
40	127	127	127	127	126														
45	115	115	115	115	114														
50	102	102	102	102	101														
55	88.9	89.1	89.0	89.0	88.1														
60	75.2	75.5	75.3	75.3	74.2														
65	61.4	61.5	61.3	61.2	60.0														
70	47.4	47.6	47.3	47.1	45.9														
75	33.6	33.8	33.5	33.4	32.1														
80	20.5	20.8	20.5	20.5	19.3														
85	8.77	8.94	8.94	9.18	8.42														
90	0.24	0.24	0.18	0.15	0.08														
95	0.05	0.06	0.07	0.09	0.10														
100	0.11	0.12	0.13	0.15	0.17														
105	0.17	0.18	0.20	0.22	0.24														
110	0.24	0.25	0.27	0.29	0.32														
115	0.31	0.32	0.34	0.36	0.39														
120	0.37	0.38	0.40	0.43	0.46														
125	0.41	0.42	0.44	0.47	0.50														
130	0.47	0.46	0.48	0.50	0.52														
135	0.49	0.49	0.51	0.50	0.53														
140	0.53	0.53	0.51	0.51	0.52														
145	0.56	0.52	0.50	0.48	0.50														
150	0.54	0.51	0.48	0.47	0.48														
155	0.52	0.47	0.44	0.46	0.47														
160	0.43	0.41	0.41	0.43	0.45														
165	0.40	0.40	0.41	0.42	0.43														
170	0.41	0.41	0.42	0.45	0.45														
175	0.43	0.43	0.46	0.48	0.47														
180	0.50	0.49	0.51	0.50	0.49														

C Range: 0 - 360DEG  
 C Interval: 15.0DEG  
 Test Speed: MEDIUM  
 Temperature:25.3DEG  
 Operators:  
 Test Date:07 October 2020

g Range: 0 - 180DEG  
 g Interval: 0.5DEG  
 Test System:EVERFINE GO-SPEX500\_V1 SYSTEM V2.0.402  
 Humidity:65.0%  
 Test Distance:3.010m [K=1.0000]  
 Remarks: