



# LED COMMERCIAL DOWNLIGHT

► **DESIGN & OPTIONS** - LED COMMERCIAL DOWNLIGHT is equipped with a dip switch that is used to adjust both the CCT and wattage. The CCT options are 2700K, 3000K, 3500K, 4000K or 5000K, while the wattage options depend on the size of the downlight. They come in 6", 8" and 10" sizes with a classic, low-profile design and a smooth trim. It is designed to operate on 120-277V circuits and is equipped with a 0-10V dimmable driver. The EM back-up provides 90 minutes of power (sold separately).

► **INSTALLATION** - With everything you need included in one set, installation has never been easier. The wiring and spring-loaded clips ensure a snug fit to the surface and the safety cable eliminates the possibility of an incident during installation. Refer to install instructions for detailed steps.

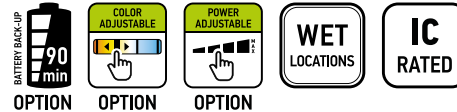
► **APPLICATION** - Install LED COMMERCIAL DOWNLIGHT to your ceiling for bright light in your hallway, corridor, or any other commercial space with a high ceiling. It is suitable for Wet locations, making it perfect for spaces with humidity requirements.

► **ENERGY SAVING & EFFICIENCY** - Replacing an incandescent fixture with LED COMMERCIAL DOWNLIGHT can save you 8 times as much on your current energy costs. With a lifespan of 50,000 hours, these fixtures are made to last decades under normal operation! This fixture will save you a significant amount of money in its lifetime.

► **CERTIFICATION & WARRANTY** - Buy with confidence: ASD provides a 5-year warranty along with ETL and ENERGY STAR certifications to guarantee top quality products and safety!

Top US certifications allow participation in rebates; please check the rebate programs available in your state.

Catalog number	
Notes	
Type	



## PRODUCT LEGEND:

Family	Modification	Size	Dimmable	Watts	CCT
ASD-CDL	X	X	X	XX	XX
LED Commercial Downlight	1	6 = 6 inch	N = Non-dimmable	20 = 20 W	30 = 3,000 K
	2	8 = 8 inch	A = Power Adjustable	30 = 30 W	40 = 4,000 K
	5	10 = 10 inch	D = Dimmable	22 = 10/15/22 W	50 = 5,000 K
				30 = 12/20/30 W	CC = 3,000/4,000/5,000 K
				40 = 20/30/40 W	AC = 2,700/3,000/3,500/4,000/5,000 K

## LED COMMERCIAL DOWNLIGHT:

Model	Size	Watts	Voltage	Dimmable	CCT	Lumens	Dimensions (DxH)	Cord
ASD-CDL1-6N2030	6"	20 W	120-277 V	-	3,000 K	1,700 lm	8 1/4" x 3 7/8"	1.6 ft
ASD-CDL1-6N2040	6"	20 W	120-277 V	-	4,000 K	1,850 lm	8 1/4" x 3 7/8"	1.6 ft
ASD-CDL1-6N2050	6"	20 W	120-277 V	-	5,000 K	1,850 lm	8 1/4" x 3 7/8"	1.6 ft
ASD-CDL1-8N3030	8"	30 W	120-277 V	-	3,000 K	2,450 lm	10 1/4" x 4 1/2"	1.6 ft
ASD-CDL1-8N3040	8"	30 W	120-277 V	-	4,000 K	2,700 lm	10 1/4" x 4 1/2"	1.6 ft
ASD-CDL1-8N3050	8"	30 W	120-277 V	-	5,000 K	2,700 lm	10 1/4" x 4 1/2"	1.6 ft
ASD-CDL2-6A22CC	6"	10/15/22 W	120-277 V	-	3,000/4,000/5,000 K	924/1,384/2,018 lm	8 1/4" x 3 7/8"	1.6 ft
ASD-CDL2-8A30CC	8"	12/20/30 W	120-277 V	-	3,000/4,000/5,000 K	957/1,561/2,305 lm	10 1/4" x 4 1/2"	1.6 ft
ASD-CDL5-6AD22AC	6"	10/15/22 W	120-277 V	0-10V	2,700/3,000/3,500/4,000/5,000 K	1,131/1,572/2,092 lm	8 1/4" x 3 7/8"	1.6 ft
ASD-CDL5-8AD30AC	8"	12/20/30 W	120-277 V	0-10V	2,700/3,000/3,500/4,000/5,000 K	1,361/2,064/2,737 lm	10 1/4" x 4 1/2"	1.6 ft
ASD-CDL5-10AD40AC	10"	20/30/40 W	120-277 V	0-10V	2,700/3,000/3,500/4,000/5,000 K	1,838/2,427/3,020 lm	11 1/4" x 4 7/8"	1.6 ft

## PRODUCT SPECIFICATIONS:

Construction & Materials							
Housing	Aluminum						
Lens	Frosted						
Finish Color	White						
Weight	ASD-CDL1-6N2030	1.3 lb (0.6 kg)	ASD-CDL1-8N3040	1.7 lb (0.8 kg)	ASD-CDL5-6AD22AC	1.5 lb (0.7 kg)	
	ASD-CDL1-6N2040		ASD-CDL1-8N3050		ASD-CDL5-8AD30AC	1.9 lb (0.9 kg)	
	ASD-CDL1-6N2050	1.5 lb (0.7 kg)	ASD-CDL2-6A22CC	1.5 lb (0.7 kg)	ASD-CDL5-10AD40AC	2 lb (1 kg)	
	ASD-CDL1-8N3030	1.7 lb (0.8 kg)	ASD-CDL2-8A30CC	1.9 lb (0.9 kg)			

For most up-to-date spec sheets please refer to [asd-lighting.com](http://asd-lighting.com)



# LED COMMERCIAL DOWNLIGHT

Environmental System							
Work Environment	ASD-CDL1-6N2030	Suitable for Wet Locations, IP54	ASD-CDL1-8N3040	Suitable for Wet Locations, IP54	ASD-CDL5-6AD22AC	Suitable for Wet Locations, IP65	
	ASD-CDL1-6N2040		ASD-CDL1-8N3050		ASD-CDL5-8AD30AC		
	ASD-CDL1-6N2050		ASD-CDL2-6A22CC		ASD-CDL5-10AD40AC	Suitable for Wet Locations, IP43	
	ASD-CDL1-8N3030		ASD-CDL2-8A30CC				
Operating Temperature	ASD-CDL1-6N2030	-13°F to 113°F (-25°C to 45°C)	ASD-CDL1-8N3040	-13°F to 113°F (-25°C to 45°C)	ASD-CDL5-6AD22AC	-4°F to 104°F (-20°C to 40°C)	
	ASD-CDL1-6N2040		ASD-CDL1-8N3050		ASD-CDL5-8AD30AC	ASD-CDL5-10AD40AC	-13°F to 113°F (-25°C to 45°C)
	ASD-CDL1-6N2050		ASD-CDL2-6A22CC				
	ASD-CDL1-8N3030		ASD-CDL2-8A30CC				
L-70 Life	> 50,000 hrs						
Optical System							
Luminous Flux	ASD-CDL1-6N2030	1,700 lm	ASD-CDL1-8N3040	2,700 lm	ASD-CDL5-6AD22AC	1,131/1,572/2,092 lm	
	ASD-CDL1-6N2040	1,850 lm	ASD-CDL1-8N3050		ASD-CDL5-8AD30AC	1,361/2,064/2,737 lm	
	ASD-CDL1-6N2050		ASD-CDL2-6A22CC	924/1,384/2,018 lm	ASD-CDL5-10AD40AC	1,838/2,427/3,020 lm	
	ASD-CDL1-8N3030	2,450 lm	ASD-CDL2-8A30CC	957/1,561/2,305 lm			
Color Temperature	3,000 K; 4,000 K; 5,000 K; 3,000/4,000/5,000 K; 2,700/3,000/3,500/4,000/5,000 K						
CRI	> 90						
Electrical System							
Input Voltage	120-277 V						
Max input current	ASD-CDL1-6N2030	0.4 A	ASD-CDL1-8N3040	0.6 A	ASD-CDL5-6AD22AC	0.23 A	
	ASD-CDL1-6N2040		ASD-CDL1-8N3050		ASD-CDL5-8AD30AC	0.3 A	
	ASD-CDL1-6N2050	0.6 A	ASD-CDL2-6A22CC	0.7 A	ASD-CDL5-10AD40AC	0.5 A	
	ASD-CDL1-8N3030		ASD-CDL2-8A30CC	0.95 A			
Inrush current (Action time)	ASD-CDL1-6N2030	1.2 A (0.3 S)	ASD-CDL1-8N3040	1.8 A (0.3 S)	ASD-CDL5-6AD22AC	43 A (0.3 S)	
	ASD-CDL1-6N2040		ASD-CDL1-8N3050		ASD-CDL5-8AD30AC	37 A (0.3 S)	
	ASD-CDL1-6N2050	1.8 A (0.3 S)	ASD-CDL2-6A22CC	2.1 A (0.3 S)	ASD-CDL5-10AD40AC	50 A (0.3 S)	
	ASD-CDL1-8N3030		ASD-CDL2-8A30CC	3.1 A (0.3 S)			
AC input range	for CDL1 and CDL2: min 99 V max 304 V			for CDL5: min 100 V max 305 V			
Off State Power	0 W						
Power Consumption	ASD-CDL1-6N2030	20 W	ASD-CDL1-8N3040	30 W	ASD-CDL5-6AD22AC	10/15/22 W	
	ASD-CDL1-6N2040		ASD-CDL1-8N3050		ASD-CDL5-8AD30AC	12/20/30 W	
	ASD-CDL1-6N2050	30 W	ASD-CDL2-6A22CC	10/15/22 W	ASD-CDL5-10AD40AC	20/30/40 W	
	ASD-CDL1-8N3030		ASD-CDL2-8A30CC	12/20/30 W			
Power Factor	> 0.9						
Output voltage	ASD-CDL1-6N2030	48 V	ASD-CDL1-8N3040	48 V	ASD-CDL5-6AD22AC	30-42 V	
	ASD-CDL1-6N2040		ASD-CDL1-8N3050		ASD-CDL5-8AD30AC		
	ASD-CDL1-6N2050		ASD-CDL2-6A22CC	30 V	ASD-CDL5-10AD40AC	36 V	
	ASD-CDL1-8N3030						ASD-CDL2-8A30CC
Surge protection	2.5 kV						
LED Driver Class	for CDL1 and CDL2: Non-isolation			for CDL5: Class 2			

## INSTALLATION GUIDE

### IMPORTANT SAFETY INFORMATION:

Please read all the instructions below before installation.

- ▶ Make sure that the supply voltage corresponds to the rated product voltage.
- ▶ The product must be installed by a qualified electrician in accordance with the National Electrical Code and corresponding local codes.
- ▶ If the product is damaged, do not use it.

### ⚠ WARNING

**RISK OF PERSONAL INJURY – READ and follow all WARNINGS and installation instructions.**

Keep or give to the owner for future reference.

**Risk of cuts:** Wear gloves to prevent cuts or abrasions when removing from carton, handling, installing, and maintaining this product.

**Risk of electric shock:** This product must be installed in accordance with the applicable installation code by a person familiar with the construction and operation of the product and the hazards involved.

**Risk of Fire:** Minimum 194°F supply conductors. Consult a qualified electrician to ensure correct branch circuit conductor.

ASD® assumes no responsibility for claims arising out of improper or careless installation or handling of this product.

For recessed installation: Access above ceiling required. Inherently protected. Vapor barrier must be suitable for 194°F.

### Dimming compatible controls

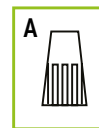
Brand	Lutron		Leviton
	DVSTV-WH	DVSTV-BR	DS 710-10Z
Models	DVSTV-LA	DVSTV-BL	AWSMT-7DW
	DVSTV-IV	DVSTV-AL	
	DVSTV-GR	DVSTV-WH	

### Regular and Voluntary Certifications

5-year limited warranty	cETLus certified 4008281	Energy Star certified
-------------------------	--------------------------	-----------------------

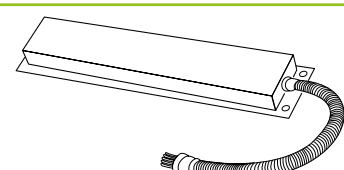
### PACKAGE CONTENTS:

Description	Q-ty
LED Commercial Downlight Fixture	1
Wire nut (A)	3
Box	1
Cut sheet	2



### ACCESSORIES (sold separately):

BLD-HM15D-480800



**LED Emergency back-up power supply**  
only for CDL5 models

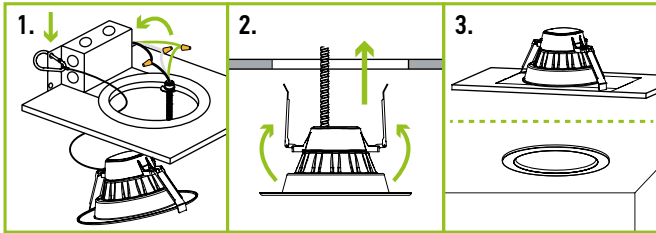
For most up-to-date spec sheets please refer to [asd-lighting.com](http://asd-lighting.com)



# LED COMMERCIAL DOWNLIGHT

## INSTALLATION STEPS:

1. Secure the safety latch onto a structural part of the original fixture housing above the ceiling. Connect the wires using wire nuts: Black to Black, White to White, Green to Green.
2. Before inserting the fixture into the mounting surface opening, fold up the two spring mounting tabs and release as the fixture is placed into the mounting surface.
3. Ensure that the spring mounting tabs have securely mounted the fixture so that the front trim is flush against the mounting surface



## EMERGENCY BACK-UP POWER SUPPLY INFORMATION

**BLD-HM15D-480800**

sold separately (only for CDL5 models):

Specifications	
Input voltage	100-347 Vac, 50/60 Hz
Input current	≤ 100 mA
Input power	8 W max
Output voltage	≤ 175 V DC
Output power	15 W
Application	< 150 W (0/1-10 V Dimmable fixture)
Ambient temperature	0°C to 50°C (30°F to 122°F)

## ORDERING INFORMATION

### LED COMMERCIAL DOWNLIGHT:

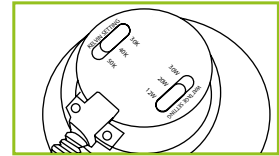
Model	UPC	Pcs in middle box	Middle box Size	Middle box Weight	GTIN 14 for Middle box	Pcs. per Carton	Carton Size	Carton Weight	GTIN 14 for Carton
ASD-CDL1-6N2030	819201025497	4	17.5" x 9.3" x 9.1"	6.2 lb	10819201025494	8	19.3" x 18.1" x 9.8"	13.2 lb	20819201025491
ASD-CDL1-6N2040	819201022762	4	17.5" x 9.3" x 9.1"	6.2 lb	20819201022766	8	19.3" x 18.1" x 9.8"	13.2 lb	30819201022763
ASD-CDL1-6N2050	819201028528	4	17.5" x 9.3" x 9.1"	7.5 lb	10819201028525	8	19.3" x 18.1" x 9.8"	16.1 lb	20819201028522
ASD-CDL1-8N3030	819201025527	-	-	-	-	4	21.7" x 9.8" x 11.2"	7.9 lb	10819201025524
ASD-CDL1-8N3040	819201022779	-	-	-	-	4	21.7" x 9.8" x 11.2"	7.9 lb	20819201022773
ASD-CDL1-8N3050	819201028535	-	-	-	-	4	21.7" x 9.8" x 11.2"	8.8 lb	10819201028532
ASD-CDL2-6A22CC	819201025558	4	17.5" x 9.3" x 9.1"	6.2 lb	10819201025555	8	19.3" x 18.1" x 9.8"	15 lb	20819201025552
ASD-CDL2-8A30CC	819201025565	-	17.5" x 9.3" x 9.1"	6.2 lb	-	4	21.7" x 9.8" x 11.2"	8.8 lb	10819201025562
ASD-CDL5-6AD22AC	810050731584	4	17.7" x 9.6" x 9.8"	7.5 lb	10810050731581	8	20.1" x 18.3" x 10.6"	16.1 lb	20810050731588
ASD-CDL5-8AD30AC	810050731591	-	-	-	-	4	18.9" x 11.4" x 11.6"	9.5 lb	10810050731598
ASD-CDL5-10AD40AC	810050735193	-	-	-	-	4	23.6" x 12.6" x 13.0"	11.5 lb	10810050735190

### ACCESSORIES FOR CDL5:

Model	Name	Weight	Dimensions	UPC	Pcs. per Carton	Carton Size	Carton Weight	GTIN 14 for Carton
BLD-HM15D-480800	LED Emergency back-up power supply	2.4 lb	12 15/16" x 1 7/16" x 15/16"	810050734882	10	18.1" x 18.3" x 14.2"	25.6 lb	10810050734889

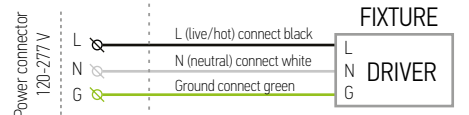
### POWER AND COLOR TEMPERATURE SETTINGS:

For models with power and color adjustable options you can choose power and color temperature with a simple switch.

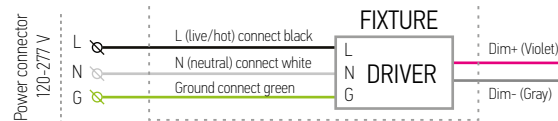


### ELECTRICAL SCHEMATIC DIAGRAM:

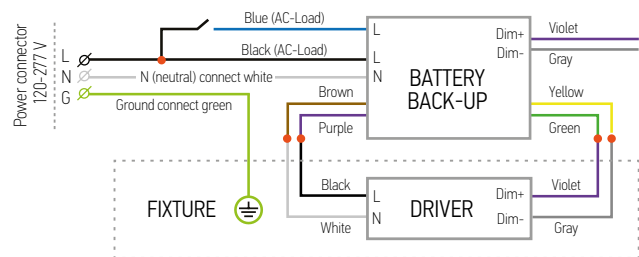
For CDL1/CDL2



For CDL5



### ELECTRICAL SCHEMATIC DIAGRAM WITH BATTERY BACK-UP:



For most up-to-date spec sheets please refer to [asd-lighting.com](http://asd-lighting.com)