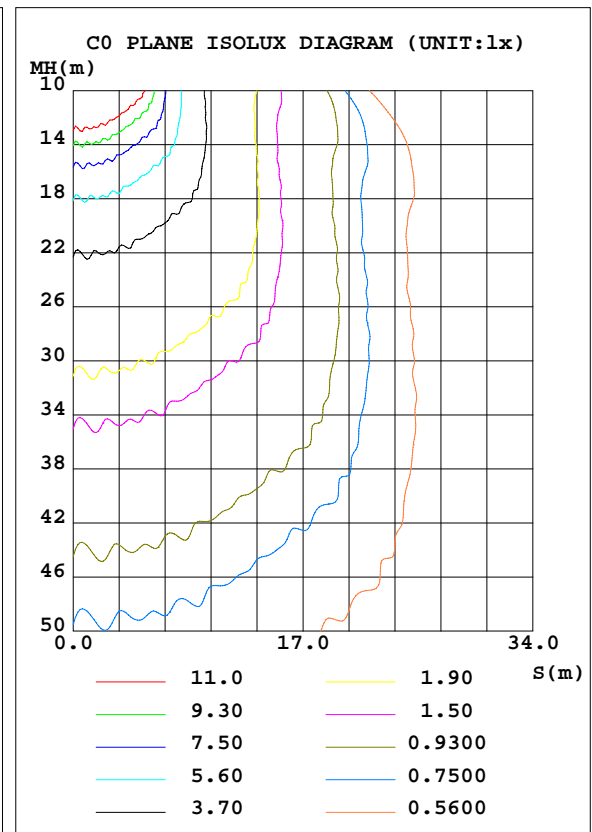
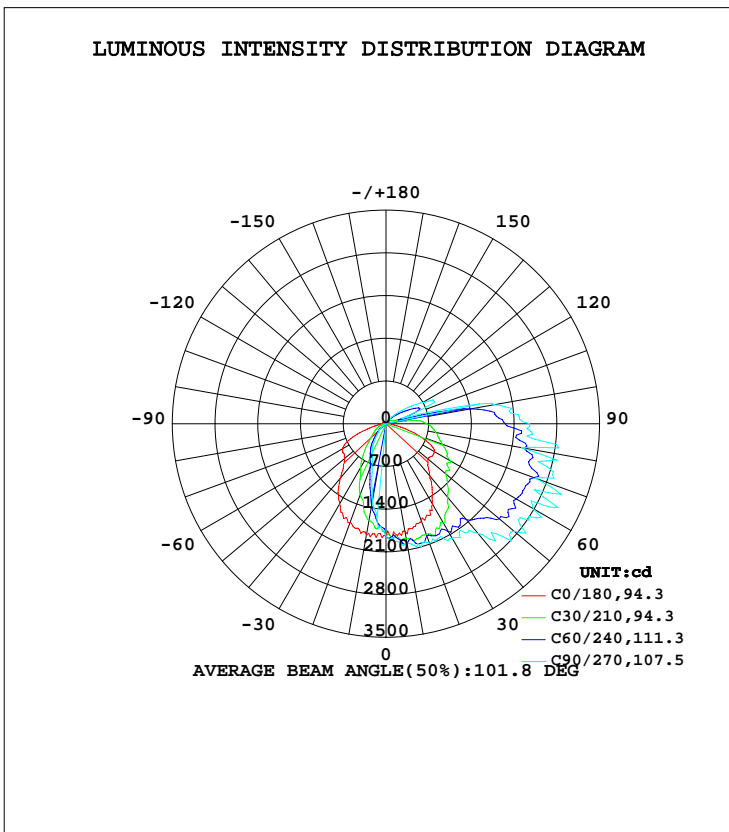


LUMINAIRE PHOTOMETRIC TEST REPORT

Test:U:120.3V I:0.4341A P:51.97W PF:0.9950 Freq:60.01Hz Lamp Flux:7817.59x1 lm		
NAME: ASD Lighting Corp	TYPE: LED	WEIGHT:
SPEC.: ASD-WLP01-50D40-PC-PRM	DIM.:	SERIAL No.:
MFR.: ASD Lighting Corp	SUR.:	Shielding Angle:

DATA OF LAMP		PHOTOMETRIC DATA Eff: 150.41 lm/W			
MODEL	ASD-WLP01-50D40-PC-PRM	I _{max} (cd)	3136	S/MH(C0/180)	1.22
NOMINAL POWER(W)	50	LOR(%)	100.0	S/MH(C90/270)	0.48
RATED VOLTAGE(V)	120-277	TOTAL FLUX(lm)	7817.6	η UP, DN(C0-180)	15.1,71.3
NOMINAL FLUX(lm)	7817.59	CIE CLASS	SEMI-D.	η UP, DN(C180-360)	0.4,13.1
LAMPS INSIDE	1	η up(%)	15.6	CIBSE SHR NOM	1.00
TEST VOLTAGE(V)	120	η down(%)	84.4	CIBSE SHR MAX	1.15



C Range: 0 - 360DEG
 C Interval: 15.0DEG
 Test Speed: HIGH
 Temperature: 21.3DEG
 Operators: Alan Wang
 Test Date: 07 December 2020

γ Range: 0 - 180DEG
 γ Interval: 1.0DEG
 Test System: EVERFINE GO-R5000_V2 SYSTEM V2.00.442T2
 Humidity: 49.7%
 Test Distance: 2.500m [K=1.0459]
 Remarks:

ZONAL FLUX DIAGRAM

ZONAL FLUX DIAGRAM:

γ	C0	C45	C90	C135	C180	C225	C270	C315	γ	Φ zone	Φ total	%lum,lamp
10	1787	1977	1997	1947	1853	1430	1287	1449	0- 10	167.4	167.4	2.14,2.14
20	1697	1965	2085	1970	1723	923.9	660.5	908.9	10- 20	451.0	618.4	7.91,7.91
30	1530	1949	2166	1937	1525	606.4	444.3	611.1	20- 30	652.9	1271	16.3,16.3
40	1128	1849	2350	1809	1171	373.2	221.7	360.8	30- 40	773.9	2045	26.2,26.2
50	899.4	1880	2738	1838	889.6	198.1	118.4	198.7	40- 50	854.3	2900	37.1,37.1
60	919.3	1909	2791	1856	823.0	89.75	40.17	95.55	50- 60	943.0	3843	49.2,49.2
70	573.7	1905	2608	1781	498.1	28.89	2.441	32.36	60- 70	992.2	4835	61.8,61.8
80	159.7	1840	2253	1737	151.6	12.54	3.067	14.64	70- 80	944.5	5779	73.9,73.9
90	84.39	1506	2357	1439	83.66	5.986	3.129	6.810	80- 90	822.2	6601	84.4,84.4
100	47.51	928.3	1801	796.0	46.29	4.639	6.563	5.170	90-100	634.4	7236	92.6,92.6
110	62.23	207.2	383.1	210.9	61.23	4.523	6.894	5.064	100-110	228.5	7464	95.5,95.5
120	37.94	245.9	699.0	219.0	40.27	4.240	6.423	4.225	110-120	174.5	7639	97.7,97.7
130	13.67	157.3	341.6	153.3	15.26	3.148	5.329	3.124	120-130	108.3	7747	99.1,99.1
140	5.430	85.54	147.0	85.51	6.167	2.732	4.033	2.717	130-140	45.95	7793	99.7,99.7
150	2.424	36.24	60.09	35.47	2.963	2.909	2.299	2.825	140-150	17.49	7811	99.9,99.9
160	1.882	7.189	23.67	7.944	3.103	2.160	2.221	2.769	150-160	5.592	7816	100,100
170	3.035	2.761	2.995	2.731	2.393	2.808	1.483	2.043	160-170	1.158	7817	100,100
180	3.758	3.758	3.758	3.758	3.257	3.257	3.257	3.257	170-180	0.2514	7818	100,100
DEG	LUMINOUS INTENSITY:cd Less than 35% Percent = 14.0 %									UNIT:lm		

Conical surface Flux(90deg): 2460.5 lm

%lum = 31.5%
 %lamp = 31.5%

Conical surface Flux(120deg): 3842.6 lm

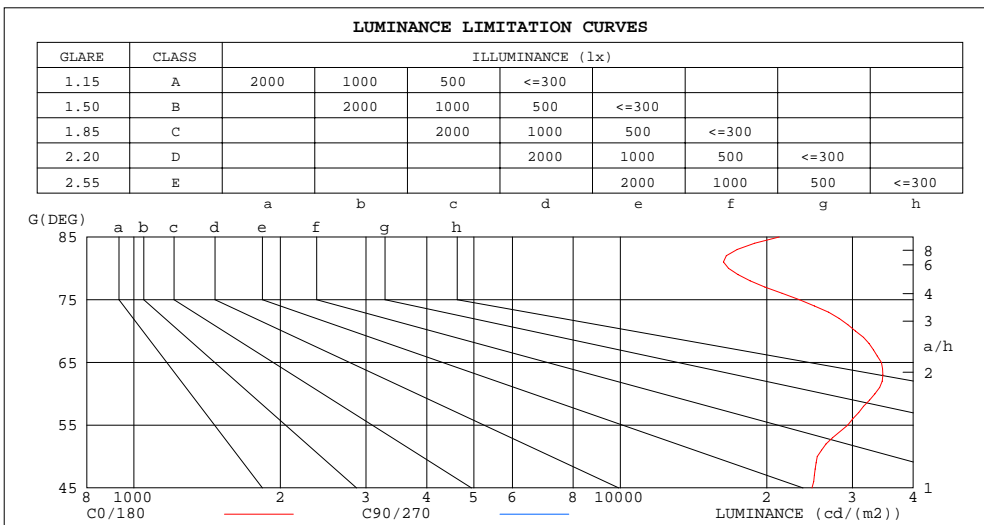
%lum = 49.2%
 %lamp = 49.2%

C Range: 0 - 360DEG
 C Interval: 15.0DEG
 Test Speed: HIGH
 Temperature: 21.3DEG
 Operators: Alan Wang
 Test Date: 07 December 2020

γ Range: 0 - 180DEG
 γ Interval: 1.0DEG
 Test System: EVERFINE GO-R5000_V2 SYSTEM V2.00.442T2
 Humidity: 49.7%
 Test Distance: 2.500m [K=1.0459]
 Remarks:

LUMINANCE LIMITATION CURVES

Test:U:120.3V I:0.4341A P:51.97W PF:0.9950 Freq:60.01Hz Lamp Flux:7817.59x1 lm		
NAME: ASD Lighting Corp	TYPE: LED	WEIGHT:
SPEC.: ASD-WLP01-50D40-PC-PRM	DIM.:	SERIAL No.:
MFR.: ASD Lighting Corp	SUR.:	Shielding Angle:



LUMINANCE cd/(m2)		
G (DEG)	C0/180	C90/270
85	21213	483129
80	16691	235491
75	23353	191692
70	30442	138375
65	34416	122277
60	33369	101292
55	29325	84996
50	25393	77311
45	24763	65192

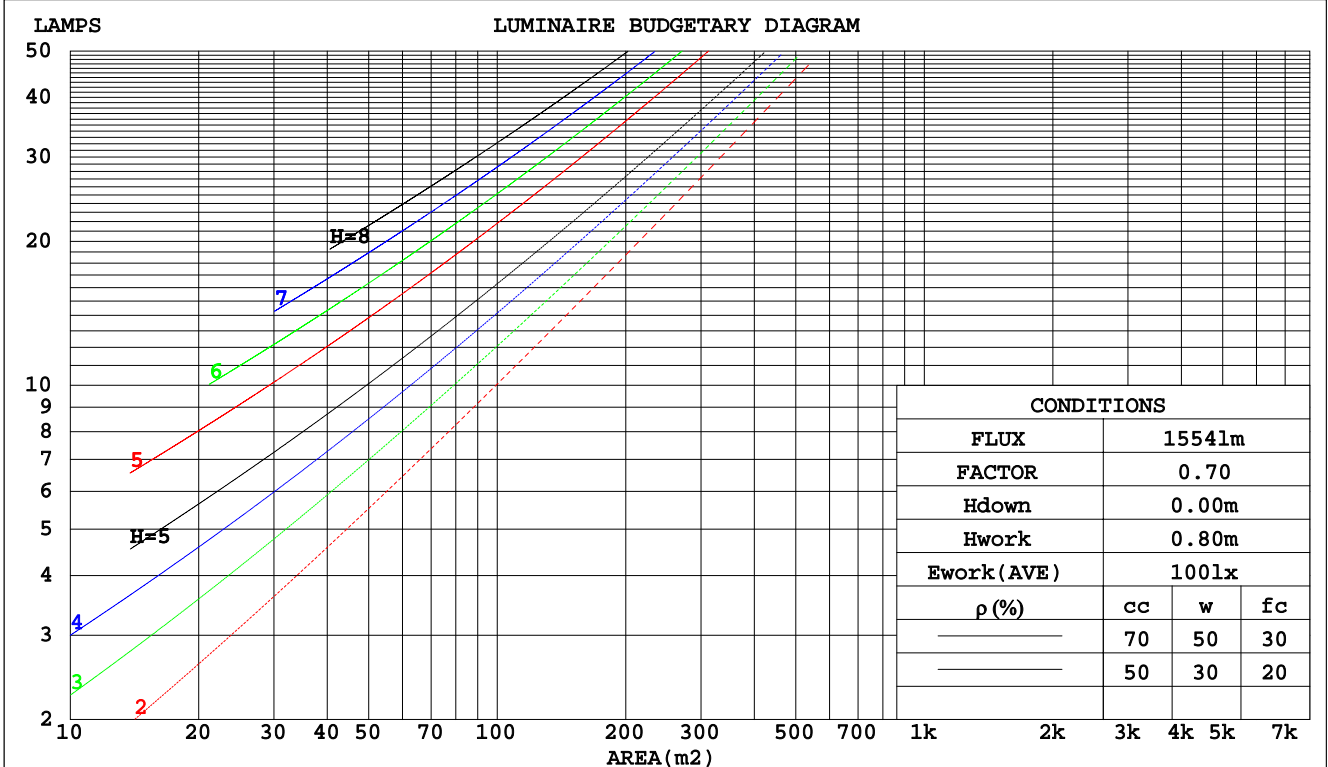
C Range: 0 - 360DEG
 C Interval: 15.0DEG
 Test Speed: HIGH
 Temperature: 21.3DEG
 Operators: Alan Wang
 Test Date: 07 December 2020

γ Range: 0 - 180DEG
 γ Interval: 1.0DEG
 Test System: EVERFINE GO-R5000_V2 SYSTEM V2.00.442T2
 Humidity: 49.7%
 Test Distance: 2.500m [K=1.0459]
 Remarks:

CU AND LUMINAIRE BUDGETARY ESTIMATE DIAGRAM

Test:U:120.3V I:0.4341A P:51.97W PF:0.9950 Freq:60.01Hz Lamp Flux:7817.59x1 lm		
NAME: ASD Lighting Corp	TYPE: LED	WEIGHT:
SPEC.: ASD-WLP01-50D40-PC-PRM	DIM.:	SERIAL No.:
MFR.: ASD Lighting Corp	SUR.:	Shielding Angle:

pcc	80%			70%			50%			30%			10%			0
pw	50%	30%	10%	50%	30%	10%	50%	30%	10%	50%	30%	10%	50%	30%	10%	0
pfc	20%			20%			20%			20%			20%			0
RCR	RCR:Room Cavity Ratio															
	Coefficients of Utilization(CU)															
0.0	1.15	1.15	1.15	1.11	1.11	1.11	1.02	1.02	1.02	.95	.95	.95	.88	.88	.88	.84
1.0	.94	.88	.82	.90	.84	.80	.83	.78	.74	.76	.72	.69	.70	.67	.64	.61
2.0	.79	.71	.64	.76	.68	.62	.70	.63	.58	.64	.59	.54	.59	.54	.51	.47
3.0	.68	.59	.51	.66	.57	.50	.60	.53	.47	.55	.49	.44	.51	.46	.41	.38
4.0	.60	.50	.42	.57	.48	.41	.53	.45	.39	.49	.42	.37	.45	.39	.34	.32
5.0	.53	.43	.36	.51	.42	.35	.47	.39	.33	.43	.37	.31	.40	.34	.29	.27
6.0	.48	.38	.31	.46	.37	.30	.42	.34	.29	.39	.32	.27	.36	.30	.26	.23
7.0	.43	.34	.27	.41	.33	.26	.38	.31	.25	.35	.29	.24	.33	.27	.23	.20
8.0	.39	.30	.24	.38	.29	.23	.35	.28	.22	.32	.26	.21	.30	.24	.20	.18
9.0	.36	.27	.21	.34	.26	.21	.32	.25	.20	.30	.24	.19	.28	.22	.18	.16
10.0	.33	.25	.19	.32	.24	.19	.30	.23	.18	.28	.22	.17	.26	.20	.16	.14



C Range: 0 - 360DEG
 C Interval: 15.0DEG
 Test Speed: HIGH
 Temperature: 21.3DEG
 Operators: Alan Wang
 Test Date: 07 December 2020

γ Range: 0 - 180DEG
 γ Interval: 1.0DEG
 Test System: EVERFINE GO-R5000_V2 SYSTEM V2.00.442T2
 Humidity: 49.7%
 Test Distance: 2.500m [K=1.0459]
 Remarks:

WEC AND CCEC

Test:U:120.3V I:0.4341A P:51.97W PF:0.9950 Freq:60.01Hz Lamp Flux:7817.59x1 lm		
NAME: ASD Lighting Corp	TYPE: LED	WEIGHT:
SPEC.: ASD-WLP01-50D40-PC-PRM	DIM.:	SERIAL No.:
MFR.: ASD Lighting Corp	SUR.:	Shielding Angle:

ρcc	80%			70%			50%			30%			10%			0
ρw	50%	30%	10%	50%	30%	10%	50%	30%	10%	50%	30%	10%	50%	30%	10%	0
ρfc	20%			20%			20%			20%			20%			0
RCR	RCR:Room Cavity Ratio						Wall Exitance Coefficients(WEC)									
0.0																
1.0	.431	.245	.078	.419	.239	.076	.396	.227	.073	.376	.217	.070	.356	.207	.067	
2.0	.362	.198	.061	.351	.193	.060	.331	.184	.057	.312	.175	.055	.294	.166	.052	
3.0	.316	.168	.050	.306	.164	.049	.288	.156	.047	.270	.148	.045	.254	.141	.044	
4.0	.281	.146	.043	.272	.142	.042	.255	.135	.040	.240	.129	.039	.225	.122	.037	
5.0	.253	.129	.037	.245	.126	.037	.230	.120	.035	.216	.114	.034	.202	.108	.033	
6.0	.230	.115	.033	.223	.113	.032	.209	.107	.031	.196	.102	.030	.184	.097	.029	
7.0	.211	.104	.030	.205	.102	.029	.192	.097	.028	.180	.092	.027	.169	.088	.026	
8.0	.195	.095	.027	.189	.093	.026	.177	.089	.025	.167	.084	.024	.157	.080	.023	
9.0	.181	.088	.024	.176	.086	.024	.165	.082	.023	.155	.078	.022	.146	.074	.021	
10.0	.169	.081	.022	.164	.079	.022	.154	.076	.021	.145	.072	.020	.136	.069	.020	

ρcc	80%			70%			50%			30%			10%			0
ρw	50%	30%	10%	50%	30%	10%	50%	30%	10%	50%	30%	10%	50%	30%	10%	0
ρfc	20%			20%			20%			20%			20%			0
RCR	RCR:Room Cavity Ratio						Ceiling Cavity Exitance Coefficients(CCEC)									
0.0	.309	.309	.309	.264	.264	.264	.180	.180	.180	.104	.104	.104	.033	.033	.033	
1.0	.308	.275	.244	.264	.236	.210	.180	.162	.145	.104	.094	.085	.033	.030	.027	
2.0	.302	.252	.210	.259	.217	.181	.177	.150	.127	.102	.087	.074	.033	.028	.024	
3.0	.294	.236	.189	.252	.203	.164	.173	.141	.115	.100	.082	.068	.032	.027	.022	
4.0	.286	.223	.175	.246	.193	.152	.169	.134	.107	.098	.079	.063	.031	.026	.021	
5.0	.278	.213	.166	.239	.185	.144	.164	.129	.102	.095	.076	.060	.031	.025	.020	
6.0	.270	.205	.159	.232	.178	.138	.160	.125	.098	.093	.073	.058	.030	.024	.019	
7.0	.263	.199	.154	.226	.172	.134	.156	.121	.095	.091	.071	.057	.029	.023	.019	
8.0	.256	.193	.150	.220	.168	.131	.152	.118	.093	.089	.069	.055	.029	.023	.018	
9.0	.249	.188	.147	.215	.163	.129	.149	.115	.091	.087	.068	.054	.028	.022	.018	
10.0	.243	.184	.145	.209	.160	.127	.145	.113	.090	.085	.067	.054	.027	.022	.018	

C Range: 0 - 360DEG
 C Interval: 15.0DEG
 Test Speed: HIGH
 Temperature: 21.3DEG
 Operators: Alan Wang
 Test Date: 07 December 2020

γ Range: 0 - 180DEG
 γ Interval: 1.0DEG
 Test System: EVERFINE GO-R5000_V2 SYSTEM V2.00.442T2
 Humidity: 49.7%
 Test Distance: 2.500m [K=1.0459]
 Remarks:

UGR(Unified Glare Rating) Table

Test:U:120.3V I:0.4341A P:51.97W PF:0.9950 Freq:60.01Hz Lamp Flux:7817.59x1 lm										
NAME: ASD Lighting Corp					TYPE: LED			WEIGHT:		
SPEC.: ASD-WLP01-50D40-PC-PRM					DIM.:			SERIAL No.:		
MFR.: ASD Lighting Corp					SUR.:			Shielding Angle:		
ceiling/cavity	0.7	0.7	0.5	0.5	0.3	0.7	0.7	0.5	0.5	0.3
walls	0.5	0.3	0.5	0.3	0.3	0.5	0.3	0.5	0.3	0.3
working plane	0.2	0.2	0.2	0.2	0.2	0.2	0.2	0.2	0.2	0.2
Room dimensions	Viewed crosswise					Viewed endwise				
x = 2H y = 2H	23.7	25.1	24.3	25.7	26.4	29.5	31.0	30.1	31.6	32.3
3H	27.0	28.3	27.5	28.9	29.6	33.6	34.9	34.2	35.5	36.2
4H	28.0	29.3	28.6	29.9	30.6	35.5	36.8	36.1	37.4	38.1
6H	28.7	29.9	29.3	30.5	31.3	37.3	38.5	37.9	39.1	39.9
8H	28.9	30.1	29.5	30.7	31.5	38.4	39.6	39.0	40.2	41.0
12H	29.1	30.2	29.7	30.8	31.6	39.6	40.7	40.2	41.4	42.1
4H 2H	26.3	27.6	26.9	28.2	29.0	30.0	31.3	30.6	31.9	32.6
3H	28.8	29.9	29.4	30.6	31.3	34.5	35.6	35.1	36.3	37.0
4H	29.9	31.0	30.6	31.7	32.4	36.6	37.7	37.2	38.3	39.1
6H	31.0	32.0	31.7	32.7	33.4	38.7	39.6	39.3	40.3	41.1
8H	31.5	32.4	32.1	33.0	33.8	39.9	40.8	40.6	41.5	42.3
12H	31.8	32.6	32.5	33.3	34.1	41.3	42.1	41.9	42.8	43.6
8H 4H	32.3	33.2	33.0	33.9	34.7	37.0	37.9	37.6	38.6	39.3
6H	33.4	34.2	34.1	34.9	35.7	39.4	40.2	40.1	40.9	41.7
8H	34.0	34.7	34.7	35.4	36.2	40.9	41.6	41.6	42.3	43.1
12H	34.5	35.1	35.2	35.9	36.7	42.6	43.2	43.3	43.9	44.8
12H 4H	33.2	34.0	33.8	34.7	35.5	37.0	37.8	37.7	38.5	39.3
6H	34.6	35.3	35.4	36.0	36.9	39.6	40.3	40.3	41.0	41.8
8H	35.3	35.9	36.0	36.7	37.5	41.2	41.8	41.9	42.5	43.4
CIE190: 2010										

CIE190: 2010
Area: 0.0551 m2

C Range: 0 - 360DEG	γ Range: 0 - 180DEG
C Interval: 15.0DEG	γ Interval: 1.0DEG
Test Speed: HIGH	Test System:EVERFINE GO-R5000_V2 SYSTEM V2.00.442T2
Temperature: 21.3DEG	Humidity: 49.7%
Operators:Alan Wang	Test Distance:2.500m [K=1.0459]
Test Date:07 December 2020	Remarks:

UTILIZATION FACTORS TABLE

Test:U:120.3V I:0.4341A P:51.97W PF:0.9950 Freq:60.01Hz Lamp Flux:7817.59x1 lm		
NAME: ASD Lighting Corp	TYPE: LED	WEIGHT:
SPEC.: ASD-WLP01-50D40-PC-PRM	DIM.:	SERIAL No.:
MFR.: ASD Lighting Corp	SUR.:	Shielding Angle:

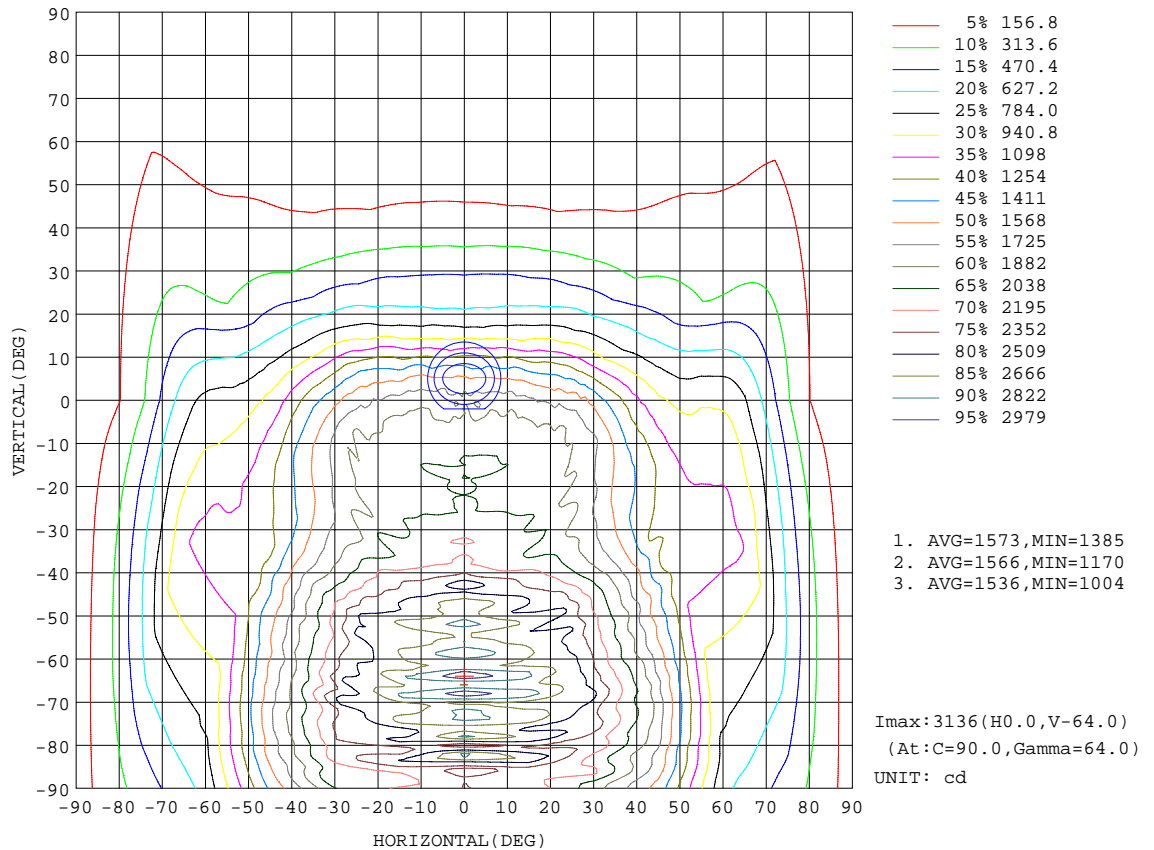
REFLECTANCE										
Ceiling	0.8	0.8	0.8	0.7	0.7	0.7	0.5	0.5	0.5	0
Walls	0.7	0.5	0.3	0.7	0.5	0.3	0.7	0.5	0.3	0
Working plane	0.2	0.2	0.2	0.2	0.2	0.2	0.2	0.2	0.2	0
ROOM INDEX	UTILIZATION FACTORS(PERCENT) $k(RI) \times RCR = 5$									
k = 0.60	47	34	26	46	34	26	44	33	26	19
0.80	55	42	33	54	41	33	51	40	33	25
1.00	63	49	40	61	48	40	58	49	39	30
1.25	69	56	47	67	55	46	63	53	45	35
1.50	74	61	52	72	60	51	67	57	50	39
2.00	82	70	61	79	68	60	74	64	57	46
2.50	87	75	67	83	73	65	77	69	62	50
3.00	90	80	72	87	78	70	81	73	67	54
4.00	95	86	79	92	84	77	85	78	73	59
5.00	99	91	84	95	88	82	88	82	77	63
ROOM INDEX	UF(total)									Direct
According to DIN EN 13032-2 2004			Suspended				SHRNOM = 1.25			

C Range: 0 - 360DEG
 C Interval: 15.0DEG
 Test Speed: HIGH
 Temperature: 21.3DEG
 Operators: Alan Wang
 Test Date: 07 December 2020

γ Range: 0 - 180DEG
 γ Interval: 1.0DEG
 Test System: EVERFINE GO-R5000_V2 SYSTEM V2.00.442T2
 Humidity: 49.7%
 Test Distance: 2.500m [K=1.0459]
 Remarks:

ISOCANDELA DIAGRAM

Test:U:120.3V I:0.4341A P:51.97W PF:0.9950 Freq:60.01Hz Lamp Flux:7817.59x1 lm		
NAME: ASD Lighting Corp	TYPE: LED	WEIGHT:
SPEC.: ASD-WLP01-50D40-PC-PRM	DIM.:	SERIAL No.:
MFR.: ASD Lighting Corp	SUR.:	Shielding Angle:

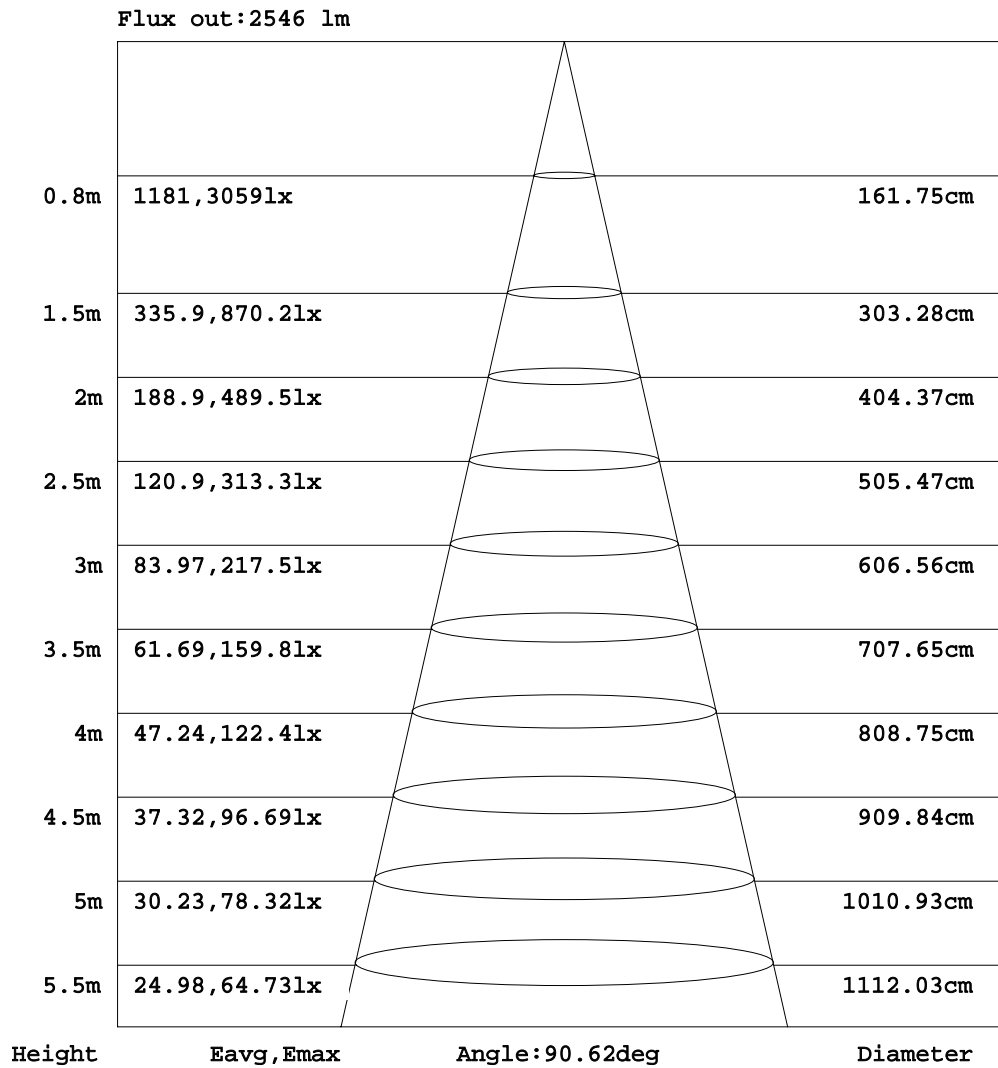


C Range: 0 - 360DEG
 C Interval: 15.0DEG
 Test Speed: HIGH
 Temperature: 21.3DEG
 Operators: Alan Wang
 Test Date: 07 December 2020

γ Range: 0 - 180DEG
 γ Interval: 1.0DEG
 Test System: EVERFINE GO-R5000_V2 SYSTEM V2.00.442T2
 Humidity: 49.7%
 Test Distance: 2.500m [K=1.0459]
 Remarks:

AAI Figure

Test:U:120.3V I:0.4341A P:51.97W PF:0.9950 Freq:60.01Hz Lamp Flux:7817.59x1 lm		
NAME: ASD Lighting Corp	TYPE: LED	WEIGHT:
SPEC.: ASD-WLP01-50D40-PC-PRM	DIM.:	SERIAL No.:
MFR.: ASD Lighting Corp	SUR.:	Shielding Angle:



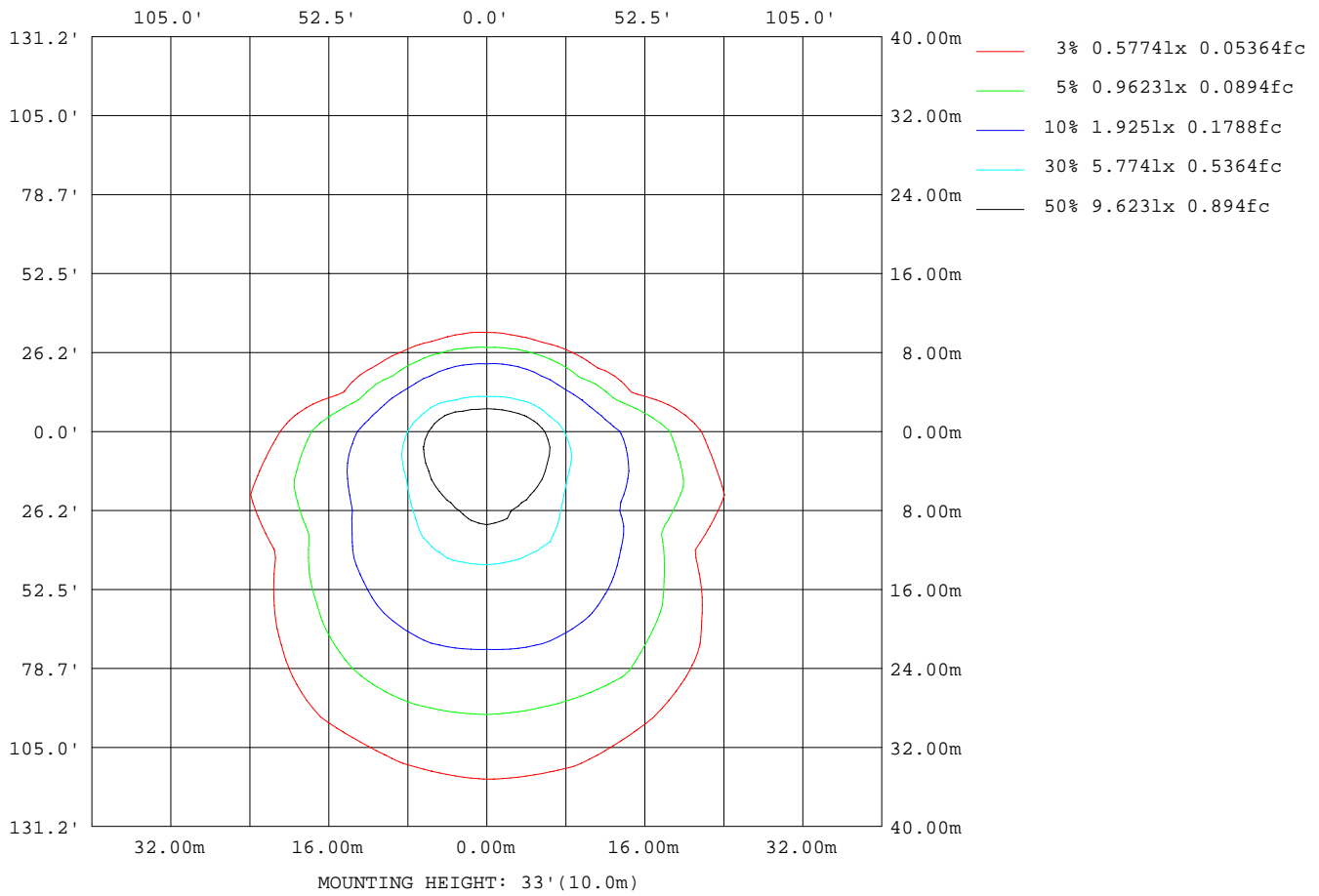
Note:The Curves indicate the illuminated area and the average illumination when the luminaire is at different distance.

C Range: 0 - 360DEG
 C Interval: 15.0DEG
 Test Speed: HIGH
 Temperature: 21.3DEG
 Operators:Alan Wang
 Test Date:07 December 2020

γ Range: 0 - 180DEG
 γ Interval: 1.0DEG
 Test System:EVERFINE GO-R5000_V2 SYSTEM V2.00.442T2
 Humidity: 49.7%
 Test Distance:2.500m [K=1.0459]
 Remarks:

ISOLUX DIAGRAM

Test:U:120.3V I:0.4341A P:51.97W PF:0.9950 Freq:60.01Hz Lamp Flux:7817.59x1 lm		
NAME: ASD Lighting Corp	TYPE: LED	WEIGHT:
SPEC.: ASD-WLP01-50D40-PC-PRM	DIM.:	SERIAL No.:
MFR.: ASD Lighting Corp	SUR.:	Shielding Angle:



C Range: 0 - 360DEG
 C Interval: 15.0DEG
 Test Speed: HIGH
 Temperature: 21.3DEG
 Operators: Alan Wang
 Test Date: 07 December 2020

γ Range: 0 - 180DEG
 γ Interval: 1.0DEG
 Test System: EVERFINE GO-R5000_V2 SYSTEM V2.00.442T2
 Humidity: 49.7%
 Test Distance: 2.500m [K=1.0459]
 Remarks:

LED Avg.L Report

Test:U:120.3V I:0.4341A P:51.97W PF:0.9950 Freq:60.01Hz Lamp Flux:7817.59x1 lm		
NAME: ASD Lighting Corp	TYPE: LED	WEIGHT:
SPEC.: ASD-WLP01-50D40-PC-PRM	DIM.:	SERIAL No.:
MFR.: ASD Lighting Corp	SUR.:	Shielding Angle:

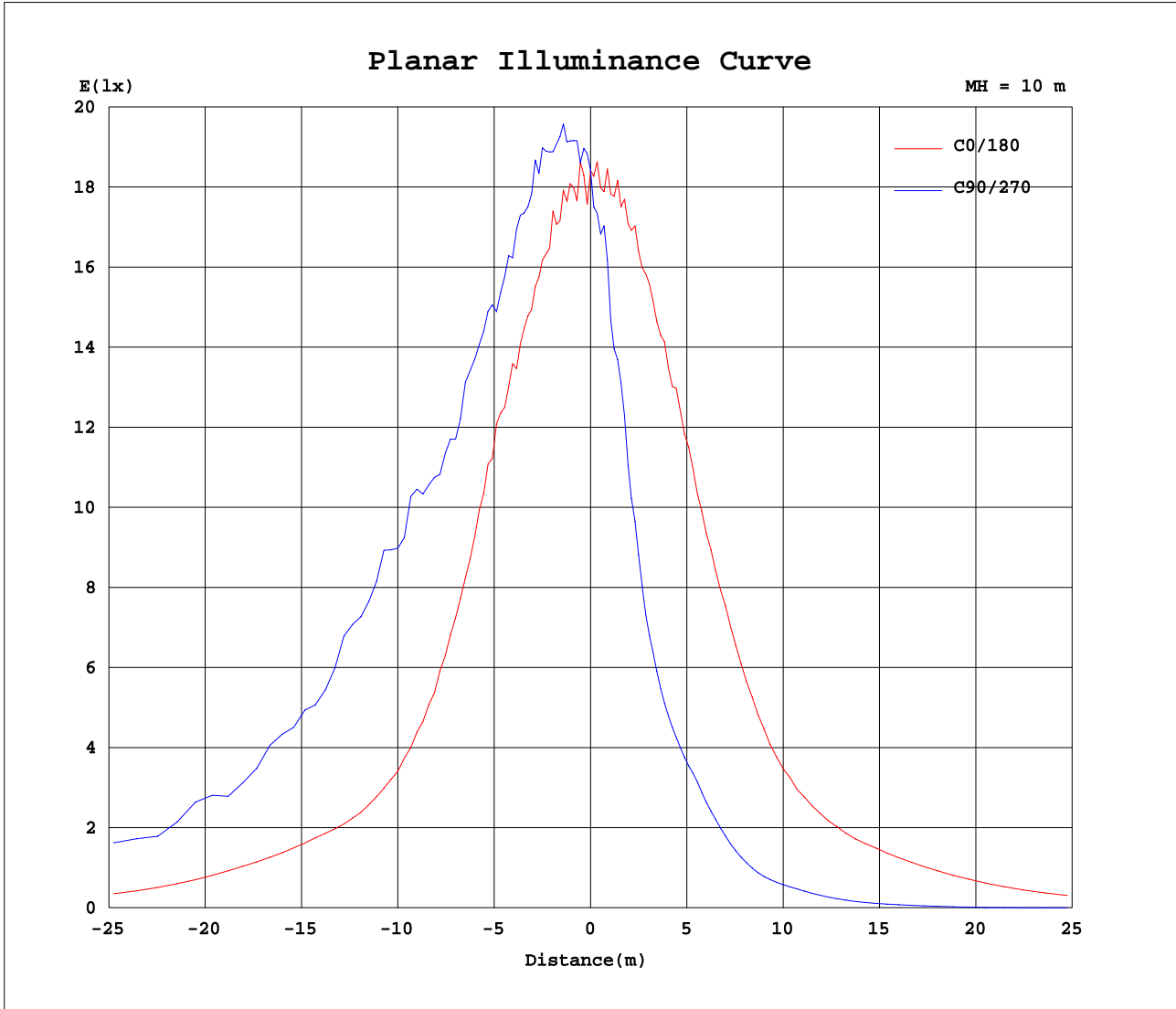
AvgL	cd/m2
L_0~180(65)av	32282
L_0~180(75)av	21469
L_0~180(85)av	21596
L_90~270(65)av	61295
L_90~270(75)av	95944
L_90~270(85)av	241888
L_45(65)av	40876
L_45(75)av	65040
L_45(85)av	173475

Standard: GB/T 29293-2012

C Range: 0 - 360DEG
 C Interval: 15.0DEG
 Test Speed: HIGH
 Temperature: 21.3DEG
 Operators: Alan Wang
 Test Date: 07 December 2020

γ Range: 0 - 180DEG
 γ Interval: 1.0DEG
 Test System: EVERFINE GO-R5000_V2 SYSTEM V2.00.442T2
 Humidity: 49.7%
 Test Distance: 2.500m [K=1.0459]
 Remarks:

Planar Illuminance Curve



C Range: 0 - 360DEG
C Interval: 15.0DEG
Test Speed: HIGH
Temperature: 21.3DEG
Operators: Alan Wang
Test Date: 07 December 2020

γ Range: 0 - 180DEG
 γ Interval: 1.0DEG
Test System: EVERFINE GO-R5000_V2 SYSTEM V2.00.442T2
Humidity: 49.7%
Test Distance: 2.500m [K=1.0459]
Remarks:

LUMINOUS DISTRIBUTION INTENSITY DATA

Test:U:120.3V I:0.4341A P:51.97W PF:0.9950 Freq:60.01Hz Lamp Flux:7817.59x1 lm		
NAME: ASD Lighting Corp	TYPE: LED	WEIGHT:
SPEC.: ASD-WLP01-50D40-PC-PRM	DIM.:	SERIAL No.:
MFR.: ASD Lighting Corp	SUR.:	Shielding Angle:

Table--1

UNIT: cd

C(DEG) γ (DEG)	0	15	30	45	60	75	90	105	120	135	150	165	180	195	210	225	240	255	270
0	1841	1841	1841	1841	1841	1841	1841	1841	1841	1841	1841	1841	1841	1841	1841	1841	1841	1841	1841
5	1820	1828	1831	1866	1864	1912	1938	1905	1896	1845	1813	1845	1866	1792	1731	1663	1622	1643	1638
10	1787	1852	1912	1977	1997	1935	1997	1997	2001	1947	1951	1903	1853	1721	1607	1430	1364	1286	1287
15	1748	1875	1953	1951	2043	2074	2036	1966	1953	1961	1969	1892	1774	1590	1422	1194	1026	910	894
20	1697	1882	1931	1965	1957	2005	2085	2025	1977	1970	1912	1868	1723	1514	1244	924	763	696	660
25	1660	1855	1919	1947	2005	2011	2064	1996	2001	1934	1961	1874	1666	1410	1005	728	616	557	537
30	1530	1763	1879	1949	2039	2135	2166	2095	2024	1937	1893	1815	1525	1190	832	606	512	469	444
35	1318	1610	1736	1974	2069	2065	2130	2126	2020	1904	1745	1614	1373	964	674	488	410	349	326
40	1128	1415	1575	1849	2052	2151	2350	2207	2012	1809	1590	1455	1171	795	518	373	293	241	222
45	965	1291	1430	1799	2190	2428	2540	2470	2186	1823	1447	1271	983	650	375	273	198	172	164
50	899	1176	1283	1880	2426	2491	2738	2553	2386	1838	1317	1142	890	506	293	198	138	129	118
55	927	1109	1251	1921	2447	2527	2686	2550	2516	1894	1228	1079	850	373	234	137	96.6	80.0	70.1
60	919	1141	1227	1909	2467	2736	2791	2723	2391	1856	1166	1099	823	281	198	89.7	59.6	46.8	40.2
65	801	1155	1098	1863	2507	2883	2847	2846	2441	1827	1151	1115	702	247	158	56.3	26.5	12.4	7.31
70	574	1085	980	1905	2582	2739	2608	2795	2402	1781	1026	1059	498	229	114	28.9	3.35	2.55	2.44
75	333	934	900	1912	2419	2732	2734	2716	2360	1762	935	939	279	205	76.4	16.4	3.27	2.87	2.80
80	160	760	826	1840	2295	2397	2253	2480	2361	1737	836	761	152	164	51.6	12.5	3.44	3.15	3.07
85	102	579	759	1684	2150	2371	2320	2373	2185	1628	772	562	106	120	37.7	9.04	3.40	3.16	3.11
90	84.4	404	668	1506	1955	2315	2357	2224	2032	1439	674	375	83.7	86.8	27.2	5.99	3.06	3.11	3.13
95	73.0	249	564	1306	1790	2030	2046	1959	1797	1246	574	226	70.4	65.2	20.3	4.94	3.23	3.68	3.90
100	47.5	85.5	143	928	1407	1749	1801	1681	1421	796	155	83.5	46.3	37.4	11.4	4.64	4.55	6.07	6.56
105	26.1	88.3	276	140	378	676	790	610	371	155	263	83.4	24.1	21.9	10.5	3.98	4.95	6.36	6.88
110	62.2	65.8	182	207	416	412	383	427	346	211	190	66.9	61.2	25.0	9.77	4.52	5.19	6.41	6.89
115	52.3	47.9	118	249	607	848	873	822	509	220	119	50.3	52.7	16.9	7.51	4.47	5.34	6.32	6.75
120	37.9	35.1	105	246	485	652	699	622	458	219	99.8	38.3	40.3	11.1	5.58	4.24	5.25	6.09	6.42
125	25.1	27.4	96.5	202	349	469	508	457	336	188	84.6	28.2	27.2	7.27	4.41	3.31	4.91	5.69	5.95
130	13.7	19.1	76.1	157	241	313	342	315	238	153	68.6	20.5	15.3	3.75	3.58	3.15	3.15	5.05	5.33
135	8.82	7.33	62.2	112	165	207	222	207	163	105	58.3	7.25	7.94	5.47	2.81	3.49	3.77	3.00	2.88
140	5.43	8.94	37.2	85.5	111	140	147	139	107	85.5	38.2	9.12	6.17	3.82	2.96	2.73	3.60	3.56	4.03
145	3.73	4.81	20.0	63.7	75.3	90.3	93.8	89.2	76.2	59.9	20.1	6.18	4.57	2.72	2.75	2.99	2.65	2.94	3.31
150	2.42	2.79	10.4	36.2	54.9	60.5	60.1	61.6	54.1	35.5	10.8	3.08	2.96	2.06	2.54	2.91	3.02	2.50	2.30
155	2.52	2.47	4.45	17.7	32.9	41.5	43.6	41.7	33.2	17.5	4.82	2.75	2.97	2.83	2.37	2.61	2.70	2.57	2.55
160	1.88	1.96	2.84	7.19	15.5	21.4	23.7	21.6	15.7	7.94	3.48	3.05	3.10	3.08	2.30	2.16	2.15	2.45	2.22
165	2.87	2.87	2.65	2.92	4.24	8.04	9.01	8.32	4.74	3.33	3.00	3.26	3.22	3.24	3.16	2.21	1.81	1.96	1.66
170	3.04	3.09	2.99	2.76	2.79	2.94	2.99	3.05	2.98	2.73	2.55	2.50	2.39	2.40	2.43	2.81	2.68	1.88	1.48
175	3.20	3.22	3.21	3.18	3.12	3.03	2.98	3.06	3.19	3.25	3.08	2.77	2.52	2.53	2.53	2.38	2.19	2.17	2.34
180	3.76	3.76	3.76	3.76	3.76	3.76	3.76	3.76	3.76	3.76	3.76	3.76	3.26	3.26	3.26	3.26	3.26	3.26	3.26

C Range: 0 - 360DEG
 C Interval: 15.0DEG
 Test Speed: HIGH
 Temperature: 21.3DEG
 Operators: Alan Wang
 Test Date: 07 December 2020

γ Range: 0 - 180DEG
 γ Interval: 1.0DEG
 Test System: EVERFINE GO-R5000_V2 SYSTEM V2.00.442T2
 Humidity: 49.7%
 Test Distance: 2.500m [K=1.0459]
 Remarks:

LUMINOUS DISTRIBUTION INTENSITY DATA

Test:U:120.3V I:0.4341A P:51.97W PF:0.9950 Freq:60.01Hz Lamp Flux:7817.59x1 lm		
NAME: ASD Lighting Corp	TYPE: LED	WEIGHT:
SPEC.: ASD-WLP01-50D40-PC-PRM	DIM.:	SERIAL No.:
MFR.: ASD Lighting Corp	SUR.:	Shielding Angle:

Table--2

UNIT: cd

C(DEG) γ (DEG)	285	300	315	330	345														
0	1841	1841	1841	1841	1841														
5	1576	1655	1672	1677	1745														
10	1320	1368	1449	1562	1693														
15	911	1024	1204	1397	1584														
20	701	772	909	1168	1449														
25	559	622	741	978	1316														
30	472	516	611	786	1091														
35	350	403	484	635	889														
40	239	287	361	490	747														
45	166	195	265	357	624														
50	125	132	199	274	496														
55	79.7	90.7	141	227	381														
60	43.7	57.4	95.6	196	283														
65	12.0	25.7	61.1	163	234														
70	2.57	4.36	32.4	122	212														
75	2.94	3.75	19.3	83.1	191														
80	3.19	3.47	14.6	58.9	157														
85	3.17	3.34	10.6	42.8	119														
90	3.07	2.82	6.81	31.2	88.2														
95	3.98	3.30	5.78	22.7	65.7														
100	5.84	4.41	5.17	6.96	33.5														
105	6.18	4.94	4.42	13.8	37.5														
110	6.36	5.27	5.06	10.5	36.9														
115	6.29	5.37	4.69	8.01	25.1														
120	6.03	5.13	4.23	5.54	16.8														
125	5.57	4.74	2.76	4.72	11.5														
130	4.78	2.92	3.12	3.31	4.81														
135	3.12	3.71	3.21	2.95	5.68														
140	3.82	3.31	2.72	3.04	3.78														
145	3.13	2.61	3.01	3.03	2.78														
150	2.36	2.77	2.82	2.92	2.45														
155	2.86	2.98	2.93	2.52	2.56														
160	2.69	2.93	2.77	2.58	2.71														
165	1.72	1.95	2.07	2.55	3.30														
170	1.44	1.55	2.04	2.81	3.12														
175	2.21	2.15	2.00	2.04	2.91														
180	3.26	3.26	3.26	3.26	3.26														

C Range: 0 - 360DEG
 C Interval: 15.0DEG
 Test Speed: HIGH
 Temperature: 21.3DEG
 Operators: Alan Wang
 Test Date: 07 December 2020

γ Range: 0 - 180DEG
 γ Interval: 1.0DEG
 Test System: EVERFINE GO-R5000_V2 SYSTEM V2.00.442T2
 Humidity: 49.7%
 Test Distance: 2.500m [K=1.0459]
 Remarks:

Photometric Data Table [cd]

G/C	0.0	15.0	30.0	45.0	60.0	75.0	90.0	105.0	120.0	135.0
0.0	1841	1841	1841	1841	1841	1841	1841	1841	1841	1841
3.0	1870	1928	1876	1823	1857	1908	1869	1828	1819	1855
6.0	1839	1879	1865	1885	1894	1897	1947	1942	1886	1856
9.0	1781	1856	1899	1914	2008	1944	1999	2003	1957	1952
12.0	1761	1905	1936	1972	1921	1966	2017	1929	2005	1994
15.0	1748	1875	1953	1951	2043	2074	2036	1966	1953	1961
18.0	1719	1862	1921	2033	2045	2044	2036	2058	2059	1992
21.0	1655	1879	1932	1981	1952	1992	2083	2021	1959	1978
24.0	1640	1905	1996	1968	2009	2011	2068	1991	1998	1919
27.0	1587	1857	1933	1910	1967	2056	2128	2012	2012	1928
30.0	1530	1763	1879	1949	2039	2135	2166	2095	2024	1937
33.0	1398	1684	1776	1873	1998	2133	2225	2165	1942	1878
36.0	1287	1567	1729	1931	2061	2063	2211	2079	2100	1939
39.0	1145	1439	1607	1831	1987	2106	2291	2172	1989	1814
42.0	1069	1382	1523	1818	2120	2327	2548	2297	2128	1831
45.0	964.8	1291	1430	1799	2190	2428	2540	2470	2186	1823
48.0	927.1	1205	1346	1830	2315	2624	2722	2602	2265	1831
51.0	899.1	1154	1259	1901	2418	2552	2840	2580	2408	1866
54.0	916.9	1111	1292	1921	2472	2571	2680	2662	2546	1920
57.0	927.3	1121	1189	1890	2536	2632	2791	2584	2520	1904
60.0	919.3	1141	1227	1909	2467	2736	2791	2723	2391	1856
63.0	866.7	1179	1126	1870	2505	2708	3005	2602	2451	1838
66.0	756.1	1134	1077	1840	2503	2747	2660	2733	2445	1837
69.0	624.2	1113	1002	1910	2526	2929	2908	2882	2462	1758
72.0	479.7	1009	950.9	1919	2601	2637	2892	2543	2595	1760
75.0	333.0	933.7	899.6	1912	2419	2732	2734	2716	2360	1762
78.0	211.8	830.2	867.6	1893	2445	2640	2860	2440	2399	1767
81.0	140.5	727.3	818.7	1823	2337	2327	2471	2298	2314	1704
84.0	108.8	620.1	770.0	1707	2136	2550	2455	2530	2272	1661
87.0	93.67	505.9	737.3	1644	2226	2274	2378	2168	2195	1551
90.0	84.39	403.6	667.9	1506	1955	2315	2357	2224	2032	1439
93.0	79.34	310.6	608.8	1402	1851	2083	2186	1984	1925	1324
96.0	69.03	202.8	526.1	1257	1788	2018	2028	1954	1781	1213
99.0	47.52	97.61	209.0	1078	1527	1814	1910	1743	1555	968.6
102.0	46.59	102.0	219.0	501.7	1084	1449	1569	1358	1039	443.5
105.0	26.10	88.27	275.9	139.6	378.3	676.5	789.9	610.0	371.1	154.5
108.0	64.48	78.33	232.3	177.2	230.3	283.9	282.8	265.2	202.1	203.6
111.0	60.98	60.66	159.5	223.1	495.0	536.9	512.8	546.2	399.4	217.3
114.0	54.84	51.15	123.7	242.4	609.1	826.8	872.8	792.0	508.2	222.0
117.0	46.57	42.59	111.4	259.1	570.7	797.0	865.9	772.7	499.6	221.0
120.0	37.94	35.12	105.3	245.9	484.5	652.4	699.0	622.4	458.0	219.0
123.0	29.83	29.88	100.9	221.2	398.5	539.6	582.4	515.6	383.1	200.8
126.0	22.74	25.77	92.19	192.9	325.5	437.8	472.5	425.2	315.4	182.4
129.0	16.97	21.16	78.93	166.5	261.9	341.5	374.0	340.8	256.6	162.3
132.0	11.01	12.52	71.35	139.2	205.3	263.0	285.3	265.0	205.1	133.9
135.0	8.822	7.334	62.25	111.8	164.7	206.6	221.8	206.8	163.1	105.4
138.0	6.891	8.449	45.86	92.78	130.4	163.5	172.8	163.4	126.7	89.87
141.0	4.863	8.152	33.07	83.03	101.9	129.0	135.3	127.7	99.29	82.53
144.0	4.128	5.555	22.67	69.70	80.39	98.40	102.7	97.32	80.75	66.63
147.0	3.013	3.609	15.20	51.33	67.13	74.71	75.94	75.19	67.82	47.81
150.0	2.424	2.794	10.41	36.24	54.93	60.51	60.09	61.55	54.06	35.47
153.0	2.470	2.375	5.245	23.49	41.56	50.08	51.01	49.88	41.02	22.89
156.0	2.548	2.507	4.088	15.40	28.78	37.09	39.38	37.50	29.15	15.31
159.0	1.962	2.122	3.289	9.405	18.24	25.05	27.54	25.37	18.36	9.600
162.0	2.180	2.275	2.523	4.136	10.74	15.34	16.94	15.56	11.01	4.622
165.0	2.870	2.866	2.651	2.920	4.239	8.042	9.009	8.323	4.745	3.334
168.0	2.990	3.023	2.872	2.702	2.971	3.226	3.289	3.350	3.195	2.896
171.0	3.056	3.111	3.035	2.820	2.773	2.830	2.865	2.928	2.931	2.691
174.0	3.146	3.181	3.177	3.105	2.992	2.907	2.850	2.945	3.064	3.084
177.0	3.275	3.293	3.273	3.265	3.252	3.233	3.223	3.257	3.328	3.417
180.0	3.758	3.758	3.758	3.758	3.758	3.758	3.758	3.758	3.758	3.758
G/C	150.0	165.0	180.0	195.0	210.0	225.0	240.0	255.0	270.0	285.0
0.0	1841	1841	1841	1841	1841	1841	1841	1841	1841	1841
3.0	1873	1840	1806	1762	1683	1702	1689	1670	1690	1659
6.0	1860	1855	1812	1763	1718	1648	1564	1552	1493	1487
9.0	1931	1898	1817	1718	1618	1497	1429	1368	1361	1373
12.0	1936	1905	1808	1674	1557	1360	1204	1087	1093	1135
15.0	1969	1892	1774	1590	1422	1194	1026	910.2	894.3	911.2
18.0	1966	1903	1762	1552	1285	1010	854.9	775.5	742.1	765.2
21.0	1933	1853	1738	1502	1206	881.1	719.5	658.0	628.8	665.5
24.0	1925	1843	1702	1433	1066	770.6	643.4	573.0	558.0	574.8
27.0	1900	1875	1625	1321	927.1	675.1	571.4	518.5	501.1	525.0
30.0	1893	1815	1525	1190	831.6	606.4	512.1	468.6	444.3	471.9

C Range: 0 - 360DEG
 C Interval: 15.0DEG
 Test Speed: HIGH
 Temperature: 21.3DEG
 Operators: Alan Wang
 Test Date: 07 December 2020

γ Range: 0 - 180DEG
 γ Interval: 1.0DEG
 Test System: EVERFINE GO-R5000_V2 SYSTEM V2.00.442T2
 Humidity: 49.7%
 Test Distance: 2.500m [K=1.0459]
 Remarks:

Photometric Data Table [cd]

33.0	1831	1694	1427	1051	737.3	538.3	455.4	393.7	374.2	397.0
36.0	1725	1585	1327	929.7	641.2	464.0	385.3	326.7	302.0	327.6
39.0	1634	1486	1205	821.8	545.6	394.5	314.5	259.5	239.9	258.4
42.0	1536	1380	1088	736.3	457.9	332.0	251.5	204.9	191.4	203.5
45.0	1447	1271	983.4	649.9	375.1	272.8	198.4	171.7	163.8	166.4
48.0	1365	1200	923.3	565.4	321.6	227.6	159.7	147.8	139.8	140.3
51.0	1302	1129	871.1	477.1	279.5	185.5	128.3	119.0	107.5	115.9
54.0	1243	1100	847.2	397.1	243.9	148.6	104.5	88.87	78.30	88.51
57.0	1240	1065	847.1	329.6	218.1	115.9	81.03	64.15	57.58	62.80
60.0	1166	1099	823.0	281.4	198.2	89.75	59.58	46.79	40.17	43.69
63.0	1185	1108	765.9	259.4	176.3	67.98	38.91	26.83	19.19	25.45
66.0	1111	1114	666.2	244.0	149.1	50.55	20.57	5.994	2.323	5.699
69.0	1060	1086	541.0	231.5	122.2	33.65	4.098	2.469	2.354	2.482
72.0	982.2	1009	405.8	221.7	97.64	22.05	3.343	2.687	2.600	2.735
75.0	934.5	939.3	279.3	204.6	76.38	16.39	3.269	2.869	2.801	2.943
78.0	874.9	840.4	188.7	182.1	58.42	14.18	3.481	3.083	2.995	3.131
81.0	821.2	722.7	137.9	153.7	49.74	11.73	3.486	3.175	3.092	3.204
84.0	786.7	601.2	112.0	128.6	40.04	9.733	3.443	3.167	3.092	3.178
87.0	737.7	485.0	95.52	104.5	33.15	7.656	3.230	3.161	3.138	3.144
90.0	674.2	375.2	83.66	86.82	27.16	5.986	3.061	3.113	3.129	3.070
93.0	612.9	282.0	74.36	72.48	22.82	4.671	2.713	3.101	3.272	3.182
96.0	539.4	197.4	67.38	61.90	19.20	4.902	3.593	4.384	4.778	4.601
99.0	254.7	90.06	47.76	44.09	14.37	4.747	4.394	5.881	6.365	5.702
102.0	189.2	86.42	46.62	22.84	5.297	4.354	4.784	6.242	6.741	6.000
105.0	262.8	83.40	24.06	21.88	10.51	3.982	4.948	6.364	6.884	6.181
108.0	243.4	79.87	63.05	28.39	10.78	4.367	5.113	6.404	6.905	6.328
111.0	165.5	61.35	59.87	23.38	9.265	4.531	5.236	6.402	6.875	6.366
114.0	125.8	52.46	54.51	18.47	7.851	4.492	5.328	6.347	6.799	6.321
117.0	110.0	46.99	48.11	14.43	6.843	4.362	5.339	6.237	6.635	6.195
120.0	99.83	38.31	40.27	11.12	5.583	4.240	5.247	6.093	6.423	6.034
123.0	89.95	31.65	32.14	8.430	4.653	4.087	5.079	5.858	6.172	5.780
126.0	81.47	26.32	24.71	6.695	4.217	2.774	4.816	5.597	5.839	5.469
129.0	71.62	21.91	18.61	4.620	3.744	2.860	3.835	5.270	5.507	5.082
132.0	63.10	14.63	5.119	5.460	3.210	3.450	2.677	3.810	4.306	3.537
135.0	58.26	7.249	7.940	5.467	2.811	3.487	3.772	2.999	2.878	3.121
138.0	46.77	7.575	6.932	4.497	2.867	3.109	3.806	3.755	3.926	3.897
141.0	34.08	9.137	5.693	3.439	2.903	2.653	3.499	3.441	3.899	3.746
144.0	23.05	7.075	4.536	2.962	2.812	2.794	2.878	3.163	3.488	3.397
147.0	15.29	4.719	3.979	2.291	2.643	3.023	2.570	2.584	2.770	2.687
150.0	10.81	3.082	2.963	2.058	2.542	2.909	3.025	2.496	2.299	2.363
153.0	6.677	2.754	2.926	2.593	2.412	2.706	2.863	2.658	2.604	2.720
156.0	4.516	2.809	2.982	2.877	2.225	2.522	2.620	2.530	2.525	2.903
159.0	3.764	2.999	3.066	3.024	2.158	2.335	2.283	2.472	2.325	2.773
162.0	2.917	3.111	3.135	3.144	2.889	2.115	2.016	2.315	1.871	2.333
165.0	2.997	3.257	3.221	3.245	3.162	2.206	1.807	1.959	1.661	1.722
168.0	2.796	3.167	3.094	2.874	2.526	2.465	2.430	1.832	1.487	1.514
171.0	2.540	2.489	2.391	2.507	2.648	2.833	2.540	1.848	1.499	1.442
174.0	2.855	2.593	2.426	2.496	2.516	2.390	2.062	1.881	1.778	1.792
177.0	3.462	3.329	2.857	2.718	2.606	2.414	2.381	2.413	2.421	2.418
180.0	3.758	3.758	3.257	3.257	3.257	3.257	3.257	3.257	3.257	3.257
G/C	300.0	315.0	330.0	345.0						
0.0	1841	1841	1841	1841						
3.0	1659	1698	1761	1810						
6.0	1579	1644	1671	1742						
9.0	1398	1493	1595	1691						
12.0	1227	1307	1503	1649						
15.0	1024	1204	1397	1584						
18.0	846.7	998.2	1225	1499						
21.0	732.6	881.7	1140	1425						
24.0	650.1	776.0	1022	1338						
27.0	568.0	679.4	892.3	1221						
30.0	515.9	611.1	785.5	1091						
33.0	445.2	539.8	698.9	956.9						
36.0	380.4	457.5	607.3	854.4						
39.0	306.9	383.2	519.2	770.9						
42.0	249.5	318.9	434.8	696.0						
45.0	195.2	265.1	357.2	624.1						
48.0	154.6	222.4	299.0	546.5						
51.0	121.4	186.2	262.9	474.0						
54.0	97.59	152.2	234.0	402.1						
57.0	77.09	120.7	213.7	339.2						
60.0	57.37	95.55	196.3	283.4						
63.0	37.64	73.63	177.9	248.1						
66.0	19.97	54.77	155.0	230.6						

C Range: 0 - 360DEG
 C Interval: 15.0DEG
 Test Speed: HIGH
 Temperature: 21.3DEG
 Operators: Alan Wang
 Test Date: 07 December 2020

γ Range: 0 - 180DEG
 γ Interval: 1.0DEG
 Test System: EVERFINE GO-R5000_V2 SYSTEM V2.00.442T2
 Humidity: 49.7%
 Test Distance: 2.500m [K=1.0459]
 Remarks:

Photometric Data Table [cd]

69.0	5.176	37.34	130.2	215.2
72.0	4.071	23.79	105.6	205.1
75.0	3.747	19.31	83.14	190.8
78.0	3.727	16.40	67.34	172.3
81.0	3.477	13.67	55.53	148.7
84.0	3.397	11.35	45.58	126.6
87.0	3.120	8.816	37.92	105.1
90.0	2.824	6.810	31.18	88.24
93.0	2.773	5.745	25.93	72.50
96.0	3.635	5.625	20.53	61.28
99.0	4.275	5.384	10.95	39.27
102.0	4.678	4.663	8.264	19.64
105.0	4.942	4.416	13.80	37.47
108.0	5.165	5.179	11.88	41.31
111.0	5.324	5.010	10.02	34.39
114.0	5.374	4.784	8.451	27.22
117.0	5.296	4.491	6.998	21.50
120.0	5.128	4.225	5.541	16.84
123.0	4.927	3.820	5.211	13.42
126.0	4.652	2.472	4.505	10.74
129.0	3.459	2.975	3.667	6.755
132.0	2.911	3.143	3.123	6.743
135.0	3.705	3.212	2.947	5.679
138.0	3.481	2.825	3.108	4.342
141.0	3.195	2.625	3.049	3.580
144.0	2.784	2.921	3.058	2.937
147.0	2.486	3.053	2.970	2.466
150.0	2.773	2.825	2.924	2.448
153.0	2.978	2.880	2.693	2.532
156.0	3.040	2.913	2.542	2.492
159.0	2.968	2.862	2.649	2.514
162.0	2.681	2.514	2.524	3.103
165.0	1.953	2.071	2.545	3.300
168.0	1.667	2.017	2.736	3.183
171.0	1.516	1.955	2.651	3.046
174.0	1.763	1.730	2.003	2.785
177.0	2.367	2.331	2.373	2.911
180.0	3.257	3.257	3.257	3.257

C Range: 0 - 360DEG
 C Interval: 15.0DEG
 Test Speed: HIGH
 Temperature: 21.3DEG
 Operators: Alan Wang
 Test Date: 07 December 2020

γ Range: 0 - 180DEG
 γ Interval: 1.0DEG
 Test System: EVERFINE GO-R5000_V2 SYSTEM V2.00.442T2
 Humidity: 49.7%
 Test Distance: 2.500m [K=1.0459]
 Remarks: