



LED SWIVEL HARDSCAPE LIGHT WITH RGBW

► **DESIGN** - LED SWIVEL HARDSCAPE LIGHT WITH RGBW has 12V low-voltage design ensuring its safety when used outdoors (transformer is not included). Swivel light head allows you to adjust the illumination angle from 0-90 degree. The PC lens with a 115° beam angle grants you even light distribution. HUB for group control via Wi-Fi is included.

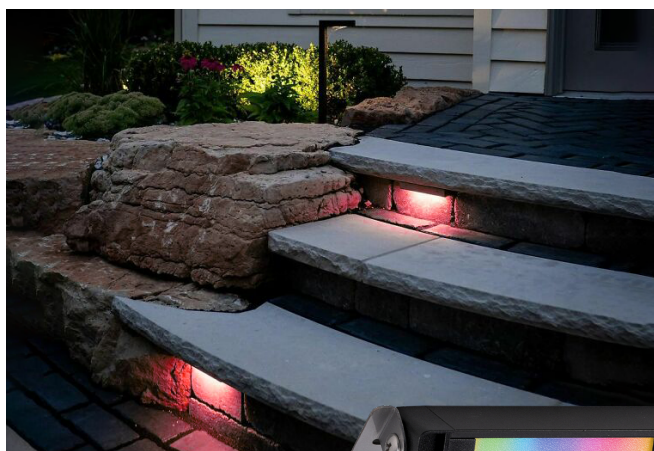
► **RGBW** - The fixture has RGBW design with APP control. You can easily select Red, Green, Blue, White (2,700K-6,500K) colors or its' combinations, having 16.7 million colors in total. You can also choose lighting patterns and set up a schedule, having a great variety of good looking effects. All of it is easily controlled by Smart APP on your Smartphone. The fixture is also compatible with Alexa and Google Assistant.

► **CUTTABLE DESIGN** - Mounting plate's width can be adjusted by cutting it along the dotted line according to your needs.

► **APPLICATION** - This fixture is rated for Wet Locations. It is perfect for mounting between hardscapes like retaining walls, barbecue fire pits, bricks, landscape steps, masonry walls, etc.

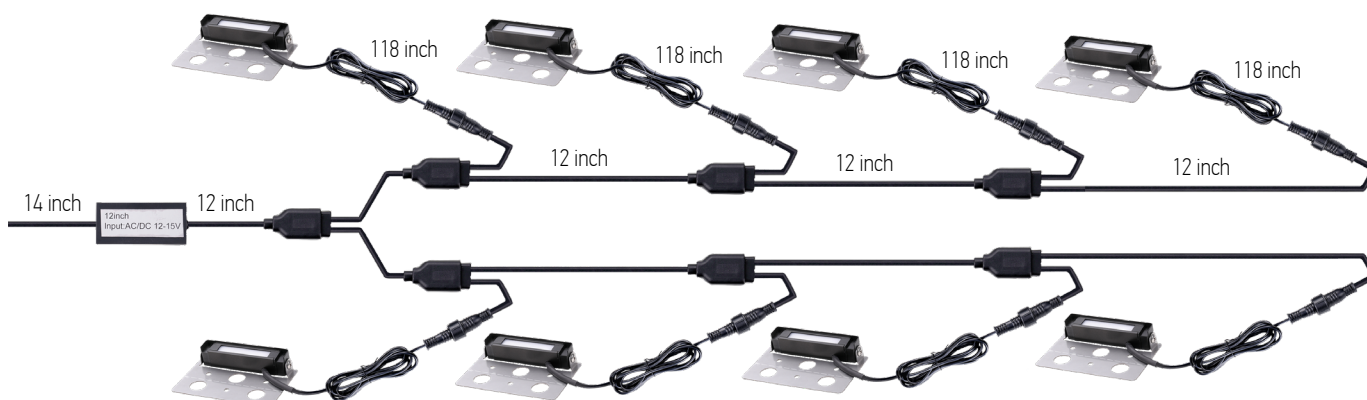
► **ADVANTAGES** - With a lifespan of 50,000 hours, these fixtures are made to last decades under normal operation! ASD provides a 5-year limited warranty along with ETL certification to guarantee top quality products and safety!

Catalog number	
Notes	
Type	



PRODUCT PRESENTATION:

Model	Size	Power	Voltage	Dimmable	Lumens	CCT	Finish	Dimensions	Certification
ASD-HSL4-2SM-RGBW-BR-8P	4 inch	1.5W	12 V	-	50 lm	Red-Green-Blue-2,700K-6,500 K	Bronze	4-1/2" x 2-15/16" x 1"	ETL
ASD-HSL7-3SM-RGBW-BR-8P	7 inch	3W	12 V	-	107 lm	Red-Green-Blue-2,700K-6,500 K	Bronze	6-15/16" x 2-15/16" x 1"	ETL
ASD-HSL12-5SM-RGBW-BR-8P	12 inch	5W	12 V	-	159 lm	Red-Green-Blue-2,700K-6,500 K	Bronze	12-7/16" x 2-15/16" x 1"	ETL



For most up-to-date spec sheets please refer to asd-lighting.com



LED SWIVEL HARDSCAPE LIGHT WITH RGBW

TECHNICAL PARAMETERS:

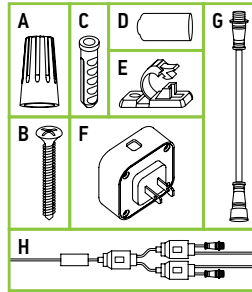
Application area	Series	Model	Work environment	Operating temperature	Power factor	Housing	Lens	CRI
RESIDENTIAL	HLSL-RGBW	ASD-HSL4-2SM-RGBW-BR-8P	Wet locations	-40°F to 113°F (-40°C to 45°C)	> 0,9	Aluminum	Acrylic	> 80
		ASD-HSL7-3SM-RGBW-BR-8P	Wet locations	-40°F to 113°F (-40°C to 45°C)	> 0,9	Aluminum	Acrylic	> 80
		ASD-HSL12-5SM-RGBW-BR-8P	Wet locations	-40°F to 113°F (-40°C to 45°C)	> 0,9	Aluminum	Acrylic	> 80

TRANSPORTATION DATA

Application area	Series	Model	Product dimensions	Weight	UPC	Pcs. (pack) per carton	Carton size	Carton weight	GTIN 14
RESIDENTIAL	HLSL-RGBW	ASD-HSL4-2SM-RGBW-BR-8P	4-1/2" x 2-15/16" x 1"	5.3 lbs (2.4 kg)	810128114578	16 (2)	12.4" x 11" x 9.1"	12.8 lbs	10810128114575
		ASD-HSL7-3SM-RGBW-BR-8P	6-15/16" x 2-15/16" x 1"	6.4 lbs (2.9 kg)	810128114585	16 (2)	12.4" x 11" x 9.1"	15 lbs	10810128114582
		ASD-HSL12-5SM-RGBW-BR-8P	12-7/16" x 2-15/16" x 1"	7.3 lbs (3.3 kg)	810128114592	1	14.2" x 5.9" x 8.3"	8.1 lbs	-

PACKAGE CONTENTS:

Description	Quantity
LED Swivel Hardscape Light with RGBW	8
Wire nut (A)	4
Self-taping screw (B)	16 (24 for 12 inch)
Anchor (C)	16 (24 for 12 inch)
Rubber cap (D)	8
Cable clamp (E)	16
Smart hup (F)	1
Extension cord (G)	2
Bluetooth controller (H)	1
Box	1



For most up-to-date spec sheets please refer to asd-lighting.com



LED SWIVEL HARDSCAPE LIGHT WITH RGBW

INSTALLATION GUIDE

IMPORTANT SAFETY INFORMATION:

Please read all the instructions below before installation!

- ▶ Make sure that the supply voltage corresponds to the rated product voltage.
- ▶ The product must be installed by a qualified electrician in accordance with the National Electrical Code and corresponding local codes.
- ▶ If the product is damaged, do not use it.

⚠ WARNING

Risk of personal injury – read and follow all warnings and installation instructions. Keep or give to the owner for future reference.

Risk of cuts: Wear gloves to prevent cuts or abrasions when removing from carton, handling, installing, and maintaining this product.

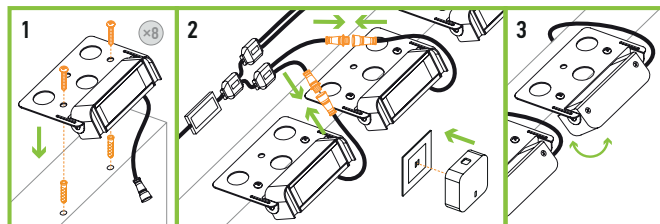
Risk of electric shock: This product must be installed in accordance with the applicable installation code by a person familiar with the construction and operation of the product and the hazards involved.

Risk of Fire: Minimum 194°F supply conductors. Consult a qualified electrician to ensure correct branch circuit conductor.

ASD® assumes no responsibility for claims arising out of improper or careless installation or handling of this product.

INSTALLATION STEPS:

1. Drill holes and insert plastic anchors. Align the fixture's mounting bracket holes with plastic anchors. Secure the fixture by screwing screws into the plastic anchors.
2. Connect the 12V transformer to 12V grid. Connect the fixture's wire to transformer wires. Plug the Smart Hub to 120V grid.
3. Adjust the lamp head as needed.



FAQ:

1. I can't see the device in the App:

Ensure the smart device is plugged in, Wi-Fi and Bluetooth are enabled on your mobile device, and your network hasn't reached its device limit.

If you're still having trouble:

- Keep the fixtures in pairing mode and reset your router.
- Verify that your Wi-Fi network is 2.4 GHz, as smart devices require this frequency.
- Ensure your smart device is within Wi-Fi range (approximately 5-10ft indoors).

2. "Time out" error when connecting the device:

- On the App homepage, tap the "Me" icon in the lower right corner.
- In the upper right corner of the next screen, tap the "Settings" icon.
- Scroll to the bottom of the settings page to check the current storage occupied by the App cache.
- Close the App, reboot your phone, and try re-adding the device.

3. I can't control multiple devices at once.

Ensure you are not attempting to group different types of devices (for example, a wall sconce and a security camera). Only devices of the same type can be grouped and controlled together.

To learn more about the App, check out the instructions at this link.

STEP-BY-STEP GUIDE FOR ADDING SMART LIGHTS TO THE ASD SMART APP:

1. **Preparation:** Gather your HSL-RGBW fixtures and the hub that comes with them.
2. **Install the ASD Smart App:** Download the ASD SMART APP from the App Store (for IOS) or from the Google Play Store (for Android) using the QR codes below.

[ASD SMART APP download Android](#)

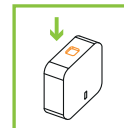
[ASD SMART APP download iOS](#)



3. **Connect the hub:** Plug the hub into a power outlet.
 - If the hub's light is blinking, it's already in pairing mode. Skip to Step 5.
 - If the light isn't blinking, go to Step 4 to manually put it in pairing mode.

4. Put the hub in pairing mode:

Locate the button on the hub. Press and hold the button for 5 seconds until the red LED starts blinking. This indicates the hub is in pairing mode and ready to connect to the App.



5. Adding the hub to the App:

- Ensure Bluetooth is enabled and your phone is connected to Wi-Fi with the Internet.
- Open the ASD Smart App.
- At the top of the App select the area where hub will be located.
- Press the "+" button in the top right corner and then the "Add device" button to add the hub.
- Wait for the App to find the hub. When it appears, press the "Add" button.
- Enter your Wi-Fi credentials.
- After the hub loads, press "Done" to complete the setup.

6. Putting the fixtures in pairing mode:

Now that the hub is added, you can pair your HSL-RGBW fixtures. To do this, turn the fixture on and off 5 times. The fixture will start blinking, signaling it's in pairing mode. The blinking will stop after a few seconds, but it will still be in pairing mode.

7. Adding HSL-RGBW fixtures to the App:

- In the App, return to the "Add device" section. Select your hub from the list of devices and follow the steps below to add your fixtures.
- Press the "Add device" button at the bottom and then the "Search for devices" button to find HSL-RGBW fixtures.
- Wait for the App to find your HSL-RGBW fixtures. When it appears, press "Next" button.
- After the fixture loads, press "Done" to complete the setup.
- Completing the setup:

With all your fixtures added, you can now control them through the ASD Smart App. Your HSL-RGBW fixtures are now ready for use!

Note: While the hub is required for adding HSL-RGBW fixtures, it's not necessary for ongoing control. You may need to log back into the app if you're using the system without the hub.

For most up-to-date spec sheets please refer to asd-lighting.com