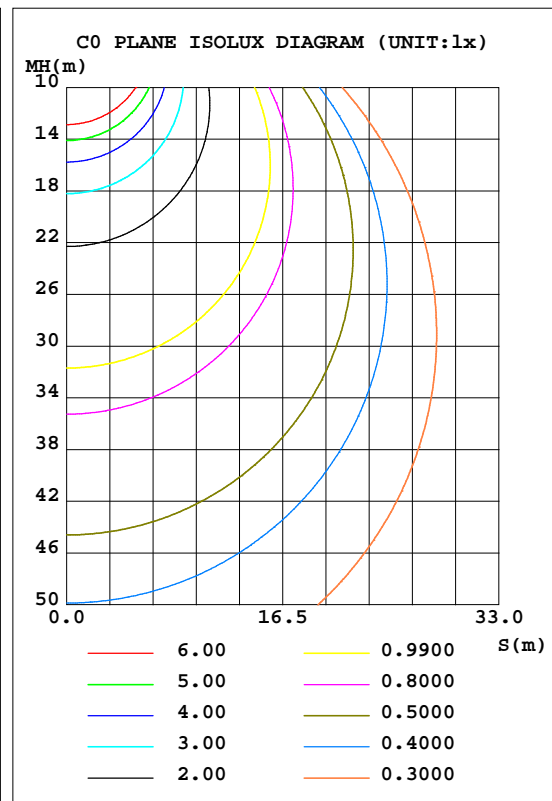
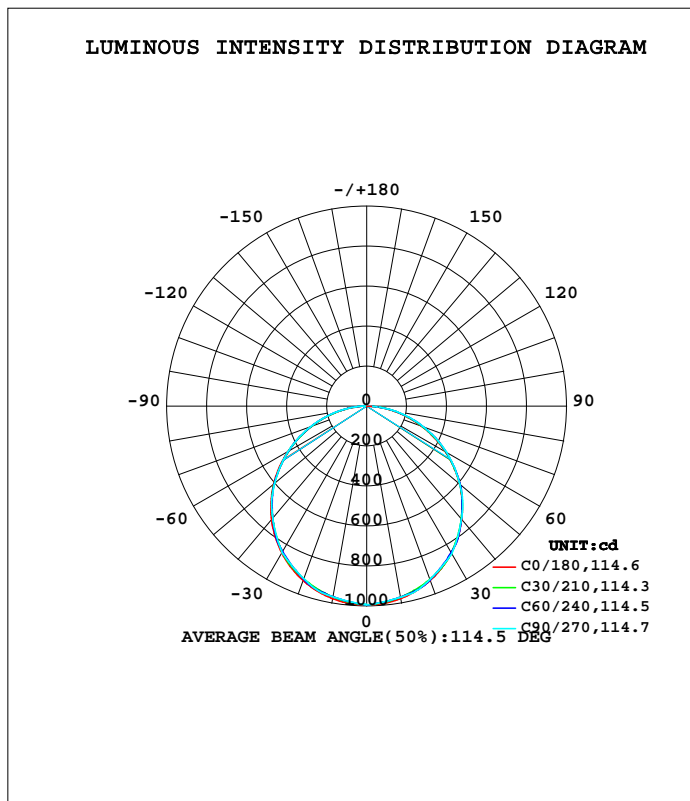


LUMINAIRE PHOTOMETRIC TEST REPORT

Test:U:120.2V I:0.2197A P:26.01W PF:0.9867 Lamp Flux:2950.88x1 lm		
NAME: ASD Lighting corp	TYPE:LED PANEL	WEIGHT:
SPEC.: ASD-ELP05-22D27CC-STD(3500K)	DIM.: 603x603mm	SERIAL No.:BLD20180912P06
MFR.: ASD Lighting corp	SUR.:0.558*0.558	Shielding Angle:

DATA OF LAMP		PHOTOMETRIC DATA Eff: 113.45 lm/W			
MODEL		I _{max} (cd)	994.7	S/MH(C0/180)	1.27
NOMINAL POWER(W)	27	LOR(%)	100.0	S/MH(C90/270)	1.26
RATED VOLTAGE(V)		TOTAL FLUX(lm)	2950.9	η UP, DN(C0-180)	0.0,50.2
NOMINAL FLUX(lm)	2950.88	CIE CLASS	DIRECT	η UP, DN(C180-360)	0.0,49.8
LAMPS INSIDE	1	η up(%)	0.0	CIBSE SHR NOM	1.25
TEST VOLTAGE(V)		η down(%)	100.0	CIBSE SHR MAX	1.35



C Range: 0 - 360DEG
 C Interval: 5.0DEG
 Test Speed: HIGH
 Temperature:22DEG
 Operators:HUA
 Test Date:2018-09-12

γ Range: 0 - 180DEG
 γ Interval: 0.5DEG
 Test System:EVERFINE GO-2000B_V1 SYSTEM V2.0.350
 Humidity:43%
 Test Distance:12.218m [K=1.0000]
 Remarks:

ZONAL FLUX DIAGRAM

ZONAL FLUX DIAGRAM:

γ	C0	C45	C90	C135	C180	C225	C270	C315	γ	Φ zone	Φ total	%lum, lamp
5	990.4	984.2	982.9	984.2	990.5	983.4	981.8	983.4	0- 5	23.63	23.63	0.81,0.81
10	977.9	969.7	971.1	969.8	978.2	968.2	968.9	968.3	5- 10	69.92	93.55	3.2,3.2
15	957.0	951.4	957.0	951.3	957.5	949.0	953.6	949.1	10- 15	114.1	207.6	7.11,7.11
20	928.5	928.4	923.6	928.2	928.9	925.1	919.4	925.5	15- 20	154.6	362.2	12.4,12.4
25	891.9	889.1	887.9	888.8	892.5	885.1	882.9	885.4	20- 25	189.7	552.0	18.9,18.9
30	848.3	843.2	852.1	843.1	849.0	838.9	846.3	839.0	25- 30	218.9	770.9	26.4,26.4
35	797.3	795.0	795.3	795.1	798.3	790.3	789.0	790.2	30- 35	241.2	1012	34.6,34.6
40	739.8	742.5	738.5	742.7	741.0	737.5	731.7	737.1	35- 40	255.1	1267	43.4,43.4
45	676.2	675.1	680.1	674.7	677.2	669.3	672.9	669.2	40- 45	260.9	1528	52.3,52.3
50	606.8	607.3	608.5	606.0	608.3	600.6	601.2	601.0	45- 50	258.4	1787	61.1,61.1
55	532.4	538.3	535.2	536.0	534.2	530.6	527.9	531.0	50- 55	247.0	2034	69.6,69.6
60	453.6	457.5	461.9	456.0	455.1	451.1	454.6	450.6	55- 60	227.8	2261	77.4,77.4
65	372.1	377.9	381.2	376.6	373.3	372.2	374.5	370.8	60- 65	201.5	2463	84.3,84.3
70	288.9	297.7	300.7	296.1	290.5	292.5	294.5	290.7	65- 70	169.1	2632	90.1,90.1
75	207.5	216.5	220.5	214.1	208.9	211.6	214.8	209.9	70- 75	132.2	2764	94.6,94.6
80	128.9	136.6	141.1	134.8	130.9	133.1	136.4	130.7	75- 80	92.46	2857	97.8,97.8
85	43.54	61.22	62.85	59.59	42.30	58.74	59.82	56.20	80- 85	51.38	2908	99.5,99.5
90	0.6842	4.978	8.611	4.097	1.188	3.791	7.373	2.579	85- 90	13.21	2921	100,100
95	0	0	0	0	0	0	0	0	90- 95	0.5062	2922	100,100
100	0	0	0	0	0	0	0	0	95-100	0	2922	100,100
105	0	0	0	0	0	0	0	0	100-105	0	2922	100,100
110	0	0	0	0	0	0	0	0	105-110	0	2922	100,100
115	0	0	0	0	0	0	0	0	110-115	0	2922	100,100
120	0	0	0	0	0	0	0	0	115-120	0	2922	100,100
125	0	0	0	0	0	0	0	0	120-125	0	2922	100,100
130	0	0	0	0	0	0	0	0	125-130	0	2922	100,100
135	0	0	0	0	0	0	0	0	130-135	0	2922	100,100
140	0	0	0	0	0	0	0	0	135-140	0	2922	100,100
145	0	0	0	0	0	0	0	0	140-145	0	2922	100,100
150	0	0	0	0	0	0	0	0	145-150	0	2922	100,100
155	0	0	0	0	0	0	0	0	150-155	0	2922	100,100
160	0	0	0	0	0	0	0	0	155-160	0	2922	100,100
165	0	0	0	0	0	0	0	0	160-165	0	2922	100,100
170	0	0	0	0	0	0	0	0	165-170	0	2922	100,100
175	0	0	0	0	0	0	0	0	170-175	0	2922	100,100
180	0	0	0	0	0	0	0	0	175-180	0	2922	100,100
DEG	LUMINOUS INTENSITY:cd									UNIT:lm		

Conical surface Flux(90deg): 1528.1 lm

%lum = 52.3%
%lamp = 52.3%

Conical surface Flux(120deg): 2261.3 lm

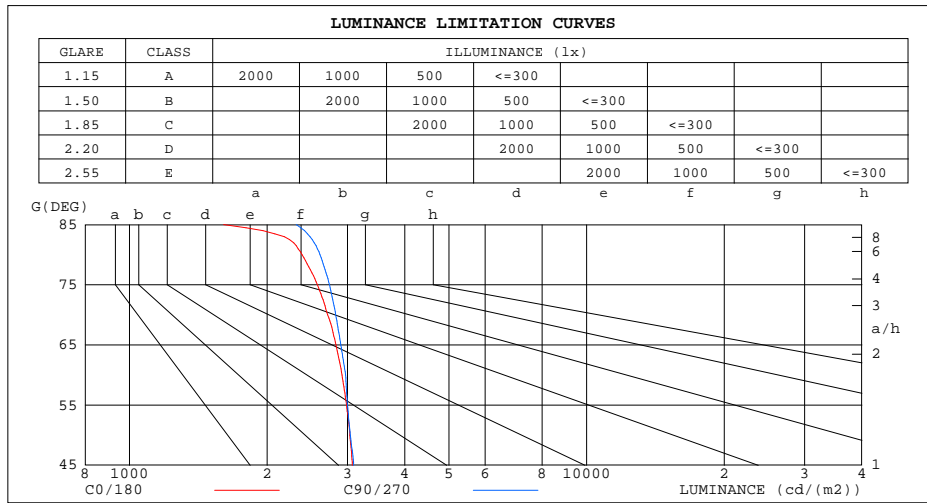
%lum = 77.4%
%lamp = 77.4%

C Range: 0 - 360DEG
C Interval: 5.0DEG
Test Speed: HIGH
Temperature:22DEG
Operators:HUA
Test Date:2018-09-12

γ Range: 0 - 180DEG
γ Interval: 0.5DEG
Test System:EVERFINE GO-2000B_V1 SYSTEM V2.0.350
Humidity:43%
Test Distance:12.218m [K=1.0000]
Remarks:

LUMINANCE LIMITATION CURVES

Test:U:120.2V I:0.2197A P:26.01W PF:0.9867 Lamp Flux:2950.88x1 lm		
NAME: ASD Lighting corp	TYPE:LED PANEL	WEIGHT:
SPEC.: ASD-ELP05-22D27CC-STD(3500K)	DIM.: 603x603mm	SERIAL No.:BLD20180912P06
MFR.: ASD Lighting corp	SUR.:0.558*0.558	Shielding Angle:



LUMINANCE cd/(m2)		
G(DEG)	C0/180	C90/270
85	1606	2319
80	2387	2613
75	2578	2739
70	2716	2827
65	2831	2901
60	2917	2971
55	2985	3000
50	3035	3044
45	3075	3093

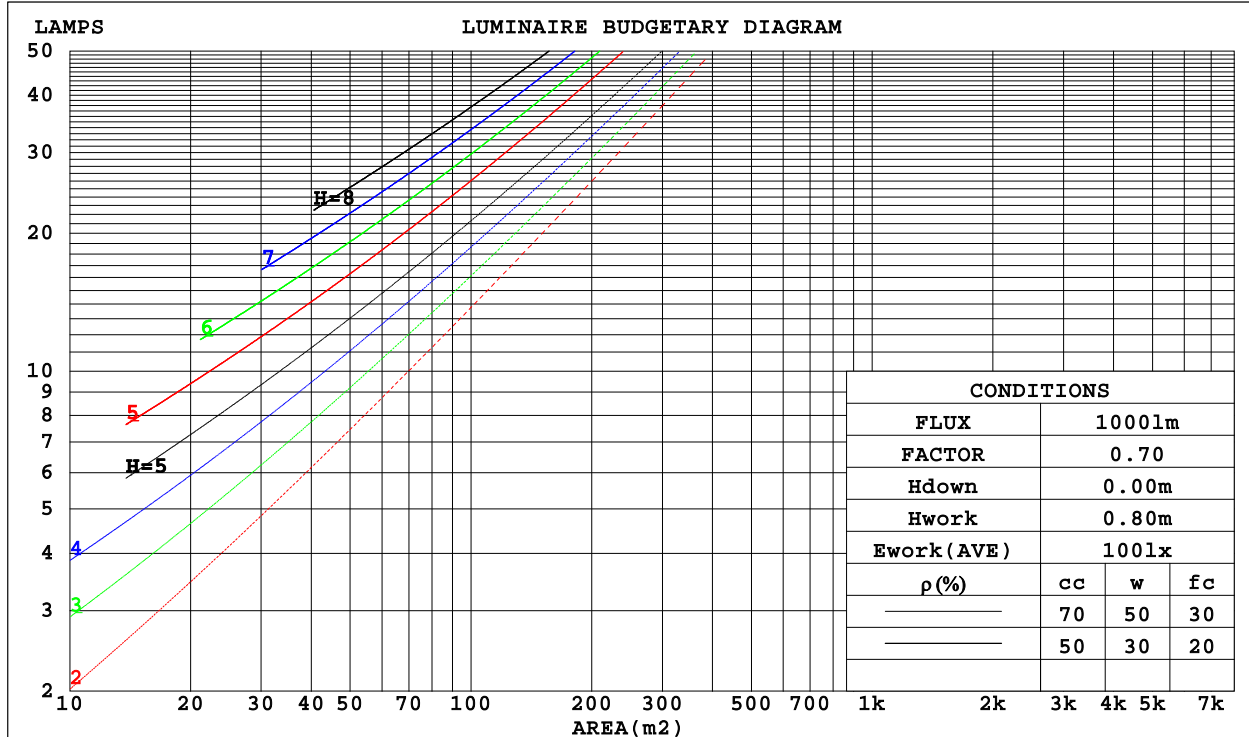
C Range: 0 - 360DEG
 C Interval: 5.0DEG
 Test Speed: HIGH
 Temperature:22DEG
 Operators:HUA
 Test Date:2018-09-12

γ Range: 0 - 180DEG
 γ Interval: 0.5DEG
 Test System:EVERFINE GO-2000B_V1 SYSTEM V2.0.350
 Humidity:43%
 Test Distance:12.218m [K=1.0000]
 Remarks:

CU AND LUMINAIRE BUDGETARY ESTIMATE DIAGRAM

Test:U:120.2V I:0.2197A P:26.01W PF:0.9867 Lamp Flux:2950.88x1 lm		
NAME: ASD Lighting corp	TYPE:LED PANEL	WEIGHT:
SPEC.: ASD-ELP05-22D27CC-STD(3500K)	DIM.: 603x603mm	SERIAL No.:BLD20180912P06
MFR.: ASD Lighting corp	SUR.:0.558*0.558	Shielding Angle:

ρ_{cc}	80%			70%			50%			30%			10%			0
ρ_w	50%	30%	10%	50%	30%	10%	50%	30%	10%	50%	30%	10%	50%	30%	10%	0
ρ_{fc}	20%			20%			20%			20%			20%			0
RCR	RCR:Room Cavity Ratio						Coefficients of Utilization(CU)									
0.0	1.19	1.19	1.19	1.16	1.16	1.16	1.11	1.11	1.11	1.06	1.06	1.06	1.02	1.02	1.02	.00
1.0	1.03	.99	.95	1.01	.97	.93	.97	.94	.91	.93	.90	.88	.89	.87	.85	.83
2.0	.90	.83	.77	.88	.81	.76	.84	.79	.74	.81	.76	.72	.78	.74	.71	.69
3.0	.79	.70	.64	.77	.69	.63	.74	.67	.62	.71	.66	.61	.69	.64	.60	.58
4.0	.70	.61	.54	.68	.60	.53	.66	.58	.53	.63	.57	.52	.61	.56	.51	.49
5.0	.62	.53	.46	.61	.52	.46	.59	.51	.45	.57	.50	.45	.55	.49	.44	.42
6.0	.56	.47	.40	.55	.46	.40	.53	.45	.40	.51	.44	.39	.50	.44	.39	.37
7.0	.51	.42	.35	.50	.41	.35	.48	.41	.35	.47	.40	.35	.45	.39	.34	.32
8.0	.46	.37	.32	.45	.37	.31	.44	.37	.31	.43	.36	.31	.42	.35	.31	.29
9.0	.42	.34	.28	.42	.34	.28	.40	.33	.28	.39	.33	.28	.38	.32	.28	.26
10.0	.39	.31	.26	.38	.31	.26	.37	.30	.25	.36	.30	.25	.36	.30	.25	.23



C Range: 0 - 360DEG
 C Interval: 5.0DEG
 Test Speed: HIGH
 Temperature:22DEG
 Operators:HUA
 Test Date:2018-09-12

γ Range: 0 - 180DEG
 γ Interval: 0.5DEG
 Test System:EVERFINE GO-2000B_V1 SYSTEM V2.0.350
 Humidity:43%
 Test Distance:12.218m [K=1.0000]
 Remarks:

WEC AND CCEC

Test:U:120.2V I:0.2197A P:26.01W PF:0.9867 Lamp Flux:2950.88x1 lm		
NAME: ASD Lighting corp	TYPE:LED PANEL	WEIGHT:
SPEC.: ASD-ELP05-22D27CC-STD(3500K)	DIM.: 603x603mm	SERIAL No.:BLD20180912P06
MFR.: ASD Lighting corp	SUR.:0.558*0.558	Shielding Angle:

pcc	80%			70%			50%			30%			10%			0
pw	50%	30%	10%	50%	30%	10%	50%	30%	10%	50%	30%	10%	50%	30%	10%	0
pfc	20%			20%			20%			20%			20%			0
RCR	RCR:Room Cavity Ratio						Wall Exitance Coefficients(WEC)									
0.0																
1.0	.318	.181	.057	.311	.177	.056	.298	.171	.055	.285	.165	.053	.274	.159	.051	
2.0	.298	.163	.050	.291	.161	.049	.280	.155	.048	.269	.151	.047	.259	.146	.046	
3.0	.274	.146	.044	.269	.144	.043	.259	.140	.043	.249	.136	.042	.240	.133	.041	
4.0	.253	.131	.039	.248	.130	.038	.239	.127	.038	.230	.123	.037	.222	.121	.037	
5.0	.233	.119	.034	.229	.117	.034	.221	.115	.034	.213	.112	.033	.206	.110	.033	
6.0	.216	.108	.031	.212	.107	.031	.205	.105	.031	.198	.103	.030	.192	.101	.030	
7.0	.201	.099	.028	.197	.098	.028	.191	.096	.028	.185	.095	.028	.179	.093	.027	
8.0	.187	.091	.026	.184	.091	.026	.178	.089	.025	.173	.088	.025	.168	.086	.025	
9.0	.175	.085	.024	.173	.084	.024	.167	.083	.023	.162	.081	.023	.158	.080	.023	
10.0	.165	.079	.022	.162	.078	.022	.158	.077	.022	.153	.076	.022	.149	.075	.021	

pcc	80%			70%			50%			30%			10%			0
pw	50%	30%	10%	50%	30%	10%	50%	30%	10%	50%	30%	10%	50%	30%	10%	0
pfc	20%			20%			20%			20%			20%			0
RCR	RCR:Room Cavity Ratio						Ceiling Cavity Exitance Coefficients(CCEC)									
0.0	.191	.191	.191	.163	.163	.163	.111	.111	.111	.064	.064	.064	.020	.020	.020	
1.0	.181	.156	.134	.155	.134	.115	.106	.092	.080	.061	.053	.046	.020	.017	.015	
2.0	.173	.132	.097	.148	.114	.084	.102	.079	.059	.059	.046	.034	.019	.015	.011	
3.0	.165	.114	.074	.142	.099	.064	.097	.069	.045	.056	.040	.026	.018	.013	.009	
4.0	.158	.101	.058	.135	.087	.050	.093	.061	.035	.054	.036	.021	.017	.012	.007	
5.0	.150	.091	.047	.129	.079	.041	.089	.055	.029	.052	.032	.017	.017	.011	.006	
6.0	.143	.082	.039	.123	.071	.034	.085	.050	.024	.049	.029	.014	.016	.010	.005	
7.0	.136	.076	.033	.117	.066	.029	.081	.046	.020	.047	.027	.012	.015	.009	.004	
8.0	.130	.070	.029	.112	.061	.025	.077	.043	.018	.045	.025	.011	.015	.008	.003	
9.0	.124	.065	.025	.106	.056	.022	.074	.040	.016	.043	.023	.009	.014	.008	.003	
10.0	.118	.061	.022	.102	.053	.020	.070	.037	.014	.041	.022	.008	.013	.007	.003	

C Range: 0 - 360DEG
 C Interval: 5.0DEG
 Test Speed: HIGH
 Temperature:22DEG
 Operators:HUA
 Test Date:2018-09-12

γ Range: 0 - 180DEG
 γ Interval: 0.5DEG
 Test System:EVERFINE GO-2000B_V1 SYSTEM V2.0.350
 Humidity:43%
 Test Distance:12.218m [K=1.0000]
 Remarks:

UGR(Unified Glare Rating) Table

Test:U:120.2V I:0.2197A P:26.01W PF:0.9867 Lamp Flux:2950.88x1 lm										
NAME: ASD Lighting corp					TYPE:LED PANEL			WEIGHT:		
SPEC.: ASD-ELP05-22D27CC-STD(3500K)					DIM.: 603x603mm			SERIAL No.:BLD20180912P06		
MFR.: ASD Lighting corp					SUR.:0.558*0.558			Shielding Angle:		
ceiling/cavity	0.7	0.7	0.5	0.5	0.3	0.7	0.7	0.5	0.5	0.3
walls	0.5	0.3	0.5	0.3	0.3	0.5	0.3	0.5	0.3	0.3
working plane	0.2	0.2	0.2	0.2	0.2	0.2	0.2	0.2	0.2	0.2
Room dimensions	Viewed crosswise					Viewed endwise				
x = 2H y = 2H	16.7	18.2	17.0	18.4	18.6	16.8	18.3	17.0	18.5	18.7
3H	18.3	19.7	18.6	19.9	20.2	18.4	19.8	18.7	20.1	20.3
4H	18.9	20.3	19.3	20.5	20.8	19.1	20.5	19.4	20.7	21.0
6H	19.4	20.7	19.7	21.0	21.2	19.7	20.9	20.0	21.2	21.5
8H	19.5	20.8	19.9	21.0	21.3	19.9	21.1	20.2	21.4	21.7
12H	19.6	20.8	19.9	21.0	21.4	20.0	21.2	20.3	21.5	21.8
4H 2H	17.3	18.7	17.7	19.0	19.2	17.4	18.8	17.7	19.0	19.3
3H	19.1	20.3	19.5	20.6	20.9	19.2	20.4	19.6	20.7	21.0
4H	19.9	21.0	20.3	21.3	21.7	20.1	21.2	20.5	21.5	21.8
6H	20.5	21.5	20.9	21.8	22.2	20.8	21.7	21.2	22.1	22.5
8H	20.7	21.6	21.1	22.0	22.3	21.0	21.9	21.4	22.3	22.7
12H	20.8	21.6	21.2	22.0	22.4	21.2	22.0	21.6	22.4	22.8
8H 4H	20.2	21.1	20.7	21.5	21.9	20.4	21.3	20.8	21.7	22.0
6H	21.0	21.8	21.5	22.2	22.6	21.2	22.0	21.7	22.4	22.8
8H	21.3	21.9	21.7	22.4	22.8	21.6	22.3	22.1	22.7	23.1
12H	21.4	22.0	21.9	22.5	22.9	21.9	22.4	22.3	22.9	23.4
12H 4H	20.3	21.1	20.7	21.5	21.9	20.4	21.2	20.8	21.6	22.0
6H	21.1	21.8	21.6	22.2	22.6	21.3	22.0	21.8	22.4	22.9
8H	21.4	22.0	21.9	22.4	22.9	21.7	22.3	22.2	22.7	23.2
Variations with the observer position at spacings:										
S = 1.0H	+ 0.1 / - 0.2					+ 0.1 / - 0.2				
1.5H	+ 0.2 / - 0.3					+ 0.2 / - 0.3				
2.0H	+ 0.2 / - 0.3					+ 0.1 / - 0.3				

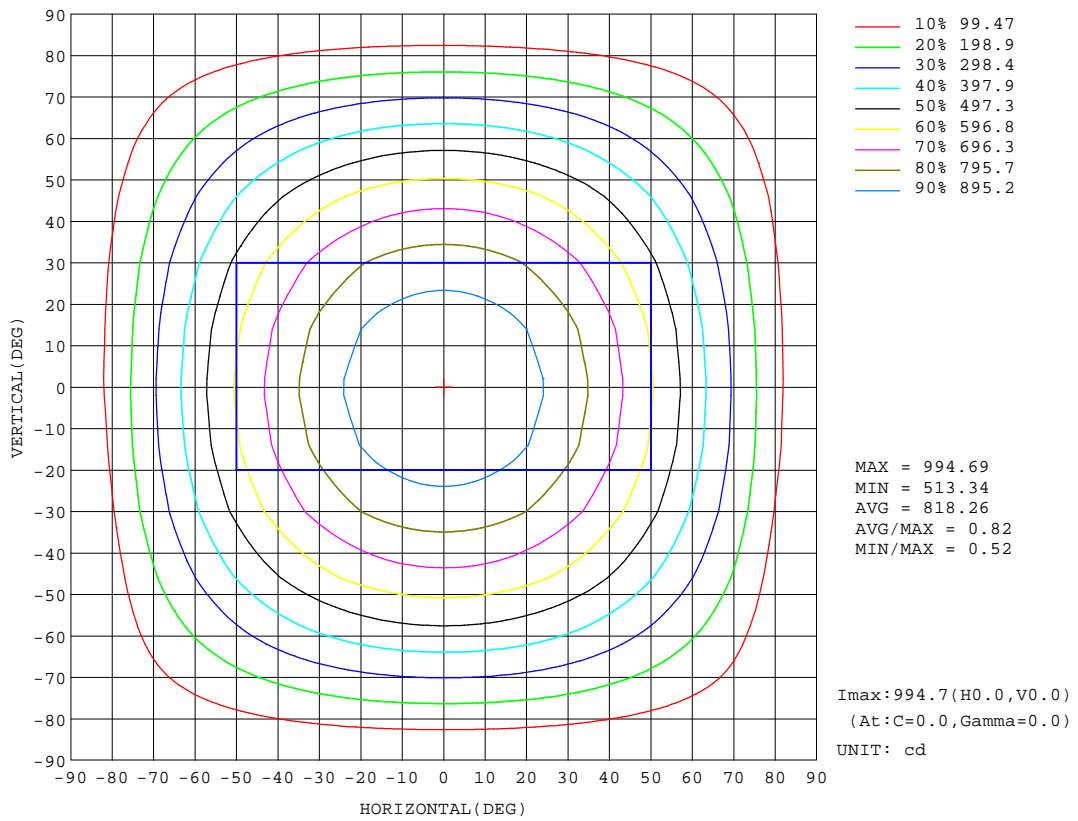
CIE Pub.117 Corrected 2922 lm Total Lamp Luminous Flux.(8log(F/F0) = 3.7)

C Range: 0 - 360DEG
 C Interval: 5.0DEG
 Test Speed: HIGH
 Temperature:22DEG
 Operators:HUA
 Test Date:2018-09-12

γ Range: 0 - 180DEG
 γ Interval: 0.5DEG
 Test System:EVERFINE GO-2000B_V1 SYSTEM V2.0.350
 Humidity:43%
 Test Distance:12.218m [K=1.0000]
 Remarks:

ISOCANDELA DIAGRAM

Test:U:120.2V I:0.2197A P:26.01W PF:0.9867 Lamp Flux:2950.88x1 lm		
NAME: ASD Lighting corp	TYPE:LED PANEL	WEIGHT:
SPEC.: ASD-ELP05-22D27CC-STD(3500K)	DIM.: 603x603mm	SERIAL No.:BLD20180912P06
MFR.: ASD Lighting corp	SUR.:0.558*0.558	Shielding Angle:



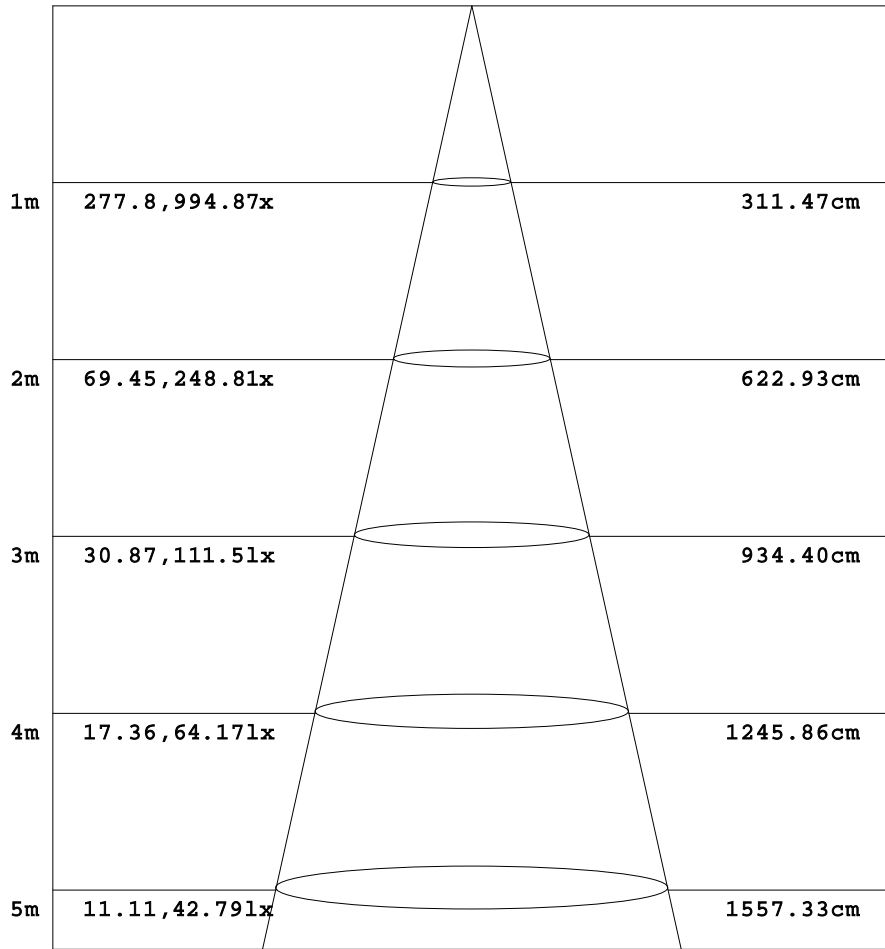
C Range: 0 - 360DEG
 C Interval: 5.0DEG
 Test Speed: HIGH
 Temperature:22DEG
 Operators:HUA
 Test Date:2018-09-12

γ Range: 0 - 180DEG
 γ Interval: 0.5DEG
 Test System:EVERFINE GO-2000B_V1 SYSTEM V2.0.350
 Humidity:43%
 Test Distance:12.218m [K=1.0000]
 Remarks:

AAI Figure

Test:U:120.2V I:0.2197A P:26.01W PF:0.9867 Lamp Flux:2950.88x1 lm		
NAME: ASD Lighting corp	TYPE:LED PANEL	WEIGHT:
SPEC.: ASD-ELP05-22D27CC-STD(3500K)	DIM.: 603x603mm	SERIAL No.:BLD20180912P06
MFR.: ASD Lighting corp	SUR.:0.558*0.558	Shielding Angle:

Flux out:2150 lm



Height Eavg, Emax Angle:114.59deg Diameter

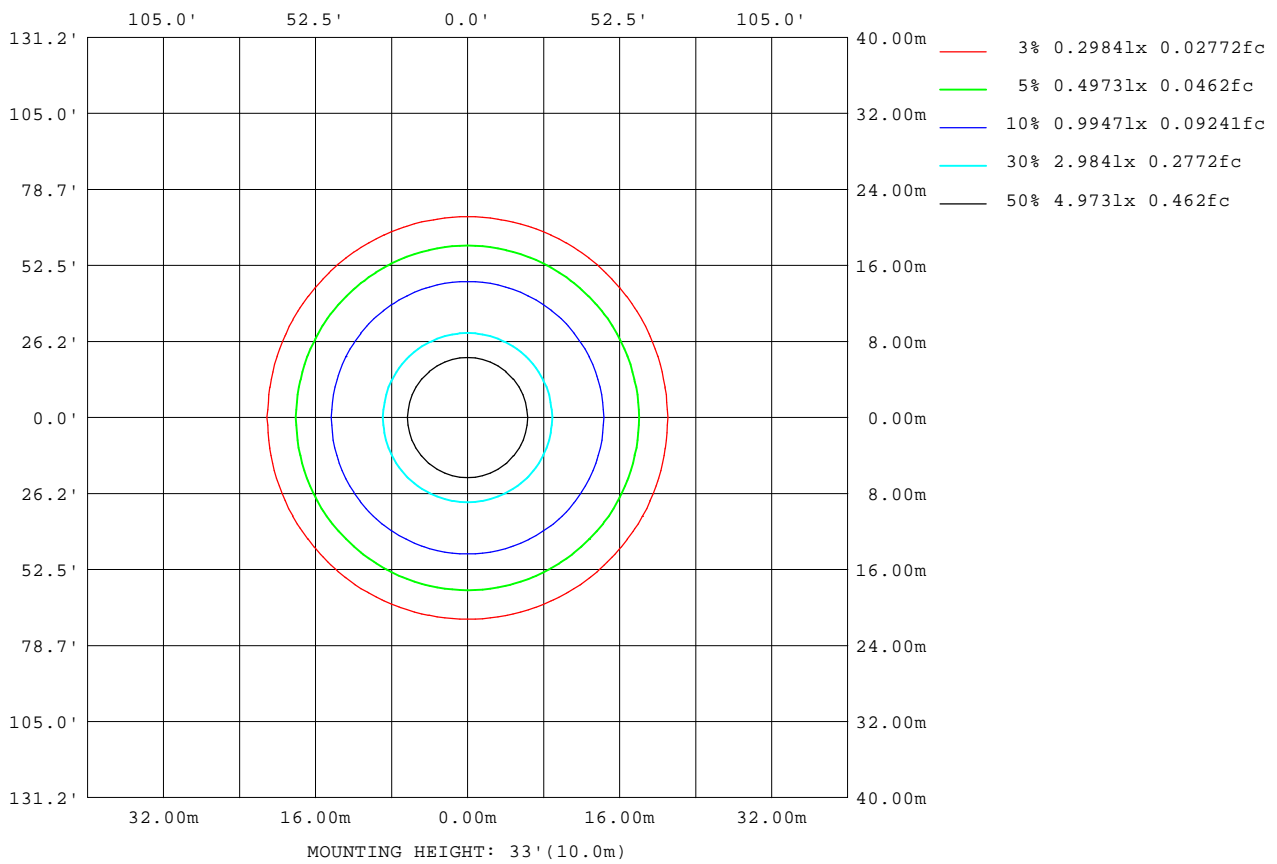
Note:The Curves indicate the illuminated area and the average illumination when the luminaire is at different distance.

C Range: 0 - 360DEG
 C Interval: 5.0DEG
 Test Speed: HIGH
 Temperature:22DEG
 Operators:HUA
 Test Date:2018-09-12

γ Range: 0 - 180DEG
 γ Interval: 0.5DEG
 Test System:EVERFINE GO-2000B_V1 SYSTEM V2.0.350
 Humidity:43%
 Test Distance:12.218m [K=1.0000]
 Remarks:

ISOLUX DIAGRAM

Test:U:120.2V I:0.2197A P:26.01W PF:0.9867 Lamp Flux:2950.88x1 lm		
NAME: ASD Lighting corp	TYPE:LED PANEL	WEIGHT:
SPEC.: ASD-ELP05-22D27CC-STD(3500K)	DIM.: 603x603mm	SERIAL No.:BLD20180912P06
MFR.: ASD Lighting corp	SUR.:0.558*0.558	Shielding Angle:



C Range: 0 - 360DEG
 C Interval: 5.0DEG
 Test Speed: HIGH
 Temperature:22DEG
 Operators:HUA
 Test Date:2018-09-12

γ Range: 0 - 180DEG
 γ Interval: 0.5DEG
 Test System:EVERFINE GO-2000B_V1 SYSTEM V2.0.350
 Humidity:43%
 Test Distance:12.218m [K=1.0000]
 Remarks:

LED Avg.L Report

Test:U:120.2V I:0.2197A P:26.01W PF:0.9867 Lamp Flux:2950.88x1 lm		
NAME: ASD Lighting corp	TYPE:LED PANEL	WEIGHT:
SPEC.: ASD-ELP05-22D27CC-STD(3500K)	DIM.: 603x603mm	SERIAL No.:BLD20180912P06
MFR.: ASD Lighting corp	SUR.:0.558*0.558	Shielding Angle:

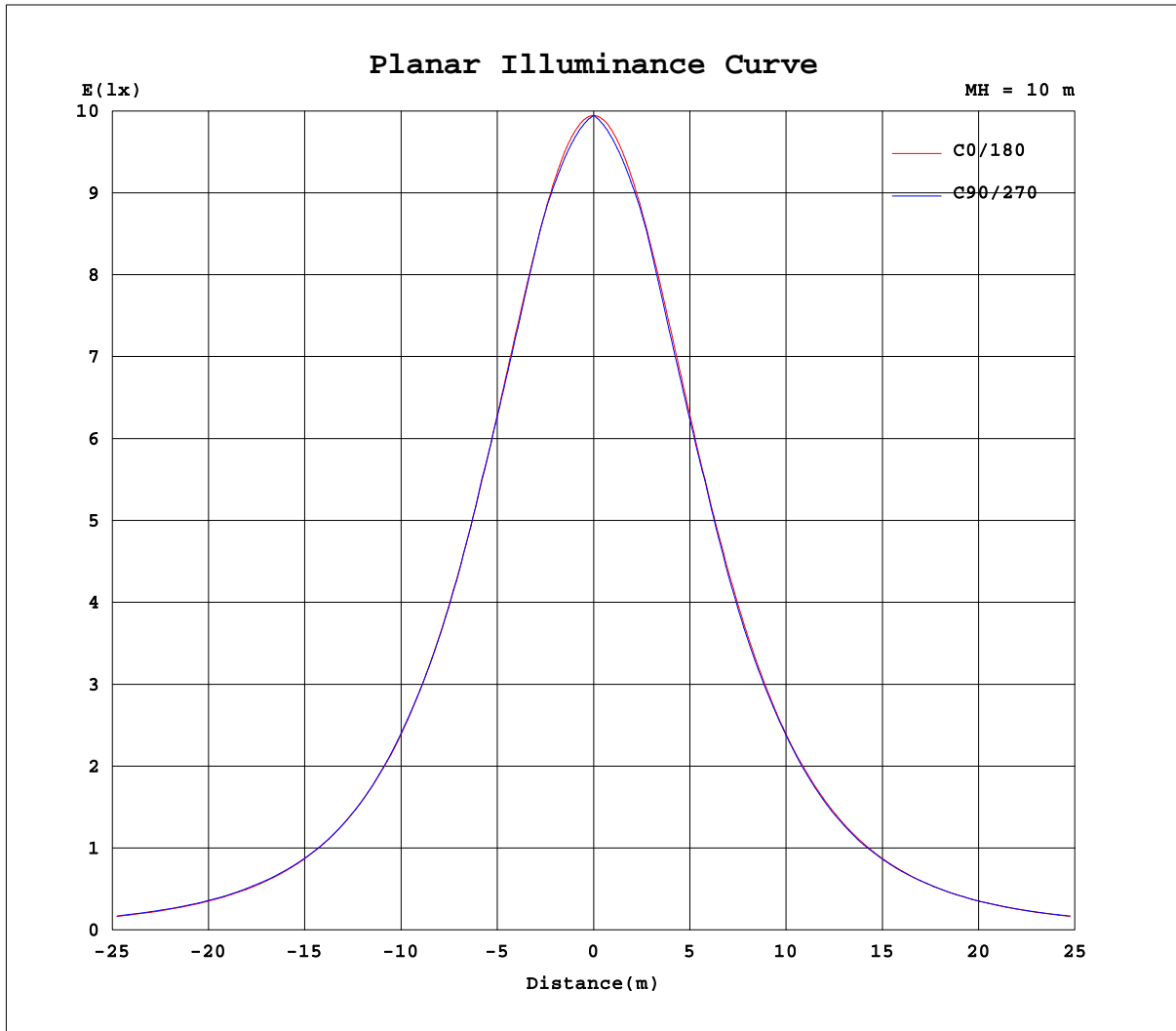
AvgL	cd/m2
L_0~180(65)av	2836
L_0~180(75)av	2587
L_0~180(85)av	1583
L_90~270(65)av	2875
L_90~270(75)av	2704
L_90~270(85)av	2263
L_45(65)av	2848
L_45(75)av	2647
L_45(85)av	2174

Standard: GB/T 29293-2012

C Range: 0 - 360DEG
C Interval: 5.0DEG
Test Speed: HIGH
Temperature:22DEG
Operators:HUA
Test Date:2018-09-12

γ Range: 0 - 180DEG
 γ Interval: 0.5DEG
Test System:EVERFINE GO-2000B_V1 SYSTEM V2.0.350
Humidity:43%
Test Distance:12.218m [K=1.0000]
Remarks:

Planar Illuminance Curve



C Range: 0 - 360DEG
C Interval: 5.0DEG
Test Speed: HIGH
Temperature: 22DEG
Operators: HUA
Test Date: 2018-09-12

γ Range: 0 - 180DEG
 γ Interval: 0.5DEG
Test System: EVERFINE GO-2000B_V1 SYSTEM V2.0.350
Humidity: 43%
Test Distance: 12.218m [K=1.0000]
Remarks:

LUMINOUS DISTRIBUTION INTENSITY DATA

Test:U:120.2V I:0.2197A P:26.01W PF:0.9867 Lamp Flux:2950.88x1 lm		
NAME: ASD Lighting corp	TYPE:LED PANEL	WEIGHT:
SPEC.: ASD-ELP05-22D27CC-STD(3500K)	DIM.: 603x603mm	SERIAL No.:BLD20180912P06
MFR.: ASD Lighting corp	SUR.:0.558*0.558	Shielding Angle:

Table--1

UNIT: cd

C(DEG) γ (DEG)	0	5	10	15	20	25	30	35	40	45	50	55	60	65	70	75	80	85	90
0	995	995	995	995	995	995	995	995	995	995	995	995	995	995	995	995	995	995	995
5	990	989	988	988	987	986	986	985	985	984	984	984	983	983	983	983	983	983	983
10	978	976	974	973	972	971	970	970	970	970	970	970	970	970	971	971	971	971	971
15	957	954	952	951	950	949	949	950	950	951	953	954	955	956	957	957	957	957	957
20	928	925	923	921	921	921	922	924	927	928	929	928	926	925	925	924	924	924	924
25	892	888	885	885	885	887	890	892	891	889	888	887	887	887	887	887	888	888	888
30	848	844	842	842	844	848	848	845	844	843	844	844	846	847	849	850	851	852	852
35	797	792	791	792	797	797	794	793	793	795	798	801	799	798	797	796	796	795	795
40	740	735	734	738	741	737	736	737	740	743	740	738	738	738	738	738	738	738	739
45	676	671	672	677	674	673	675	679	677	675	675	675	676	678	679	680	680	680	680
50	607	602	605	607	604	606	610	607	606	607	609	611	612	611	610	609	609	609	608
55	532	528	533	531	532	535	533	533	535	538	537	536	535	535	535	535	535	535	535
60	454	450	454	452	456	454	456	459	458	457	458	458	459	460	461	461	462	462	462
65	372	370	371	374	373	375	377	376	377	378	380	381	381	381	381	381	381	381	381
70	289	290	289	290	293	293	293	295	297	298	298	299	300	301	301	301	301	301	301
75	207	208	208	211	211	212	214	214	215	217	217	218	219	220	220	221	221	221	221
80	129	121	120	126	132	134	135	135	136	137	137	138	139	140	141	141	141	141	141
85	43.5	37.3	42.9	51.9	57.3	59.3	60.3	60.8	61.2	61.2	61.3	61.4	61.6	61.6	61.7	62.0	62.5	62.7	62.8
90	0.68	1.44	1.40	1.38	1.61	2.67	3.41	4.04	4.59	4.98	5.41	5.85	6.22	6.51	6.93	7.47	8.07	8.45	8.61
95	0.00	0.00	0.00	0.00	0.00	0.00	0.00	0.00	0.00	0.00	0.00	0.00	0.00	0.00	0.00	0.00	0.00	0.00	0.00
100	0.00	0.00	0.00	0.00	0.00	0.00	0.00	0.00	0.00	0.00	0.00	0.00	0.00	0.00	0.00	0.00	0.00	0.00	0.00
105	0.00	0.00	0.00	0.00	0.00	0.00	0.00	0.00	0.00	0.00	0.00	0.00	0.00	0.00	0.00	0.00	0.00	0.00	0.00
110	0.00	0.00	0.00	0.00	0.00	0.00	0.00	0.00	0.00	0.00	0.00	0.00	0.00	0.00	0.00	0.00	0.00	0.00	0.00
115	0.00	0.00	0.00	0.00	0.00	0.00	0.00	0.00	0.00	0.00	0.00	0.00	0.00	0.00	0.00	0.00	0.00	0.00	0.00
120	0.00	0.00	0.00	0.00	0.00	0.00	0.00	0.00	0.00	0.00	0.00	0.00	0.00	0.00	0.00	0.00	0.00	0.00	0.00
125	0.00	0.00	0.00	0.00	0.00	0.00	0.00	0.00	0.00	0.00	0.00	0.00	0.00	0.00	0.00	0.00	0.00	0.00	0.00
130	0.00	0.00	0.00	0.00	0.00	0.00	0.00	0.00	0.00	0.00	0.00	0.00	0.00	0.00	0.00	0.00	0.00	0.00	0.00
135	0.00	0.00	0.00	0.00	0.00	0.00	0.00	0.00	0.00	0.00	0.00	0.00	0.00	0.00	0.00	0.00	0.00	0.00	0.00
140	0.00	0.00	0.00	0.00	0.00	0.00	0.00	0.00	0.00	0.00	0.00	0.00	0.00	0.00	0.00	0.00	0.00	0.00	0.00
145	0.00	0.00	0.00	0.00	0.00	0.00	0.00	0.00	0.00	0.00	0.00	0.00	0.00	0.00	0.00	0.00	0.00	0.00	0.00
150	0.00	0.00	0.00	0.00	0.00	0.00	0.00	0.00	0.00	0.00	0.00	0.00	0.00	0.00	0.00	0.00	0.00	0.00	0.00
155	0.00	0.00	0.00	0.00	0.00	0.00	0.00	0.00	0.00	0.00	0.00	0.00	0.00	0.00	0.00	0.00	0.00	0.00	0.00
160	0.00	0.00	0.00	0.00	0.00	0.00	0.00	0.00	0.00	0.00	0.00	0.00	0.00	0.00	0.00	0.00	0.00	0.00	0.00
165	0.00	0.00	0.00	0.00	0.00	0.00	0.00	0.00	0.00	0.00	0.00	0.00	0.00	0.00	0.00	0.00	0.00	0.00	0.00
170	0.00	0.00	0.00	0.00	0.00	0.00	0.00	0.00	0.00	0.00	0.00	0.00	0.00	0.00	0.00	0.00	0.00	0.00	0.00
175	0.00	0.00	0.00	0.00	0.00	0.00	0.00	0.00	0.00	0.00	0.00	0.00	0.00	0.00	0.00	0.00	0.00	0.00	0.00
180	0.00	0.00	0.00	0.00	0.00	0.00	0.00	0.00	0.00	0.00	0.00	0.00	0.00	0.00	0.00	0.00	0.00	0.00	0.00

C Range: 0 - 360DEG
 C Interval: 5.0DEG
 Test Speed: HIGH
 Temperature:22DEG
 Operators:HUA
 Test Date:2018-09-12

γ Range: 0 - 180DEG
 γ Interval: 0.5DEG
 Test System:EVERFINE GO-2000B_V1 SYSTEM V2.0.350
 Humidity:43%
 Test Distance:12.218m [K=1.0000]
 Remarks:

LUMINOUS DISTRIBUTION INTENSITY DATA

Test:U:120.2V I:0.2197A P:26.01W PF:0.9867 Lamp Flux:2950.88x1 lm		
NAME: ASD Lighting corp	TYPE:LED PANEL	WEIGHT:
SPEC.: ASD-ELP05-22D27CC-STD(3500K)	DIM.: 603x603mm	SERIAL No.:BLD20180912P06
MFR.: ASD Lighting corp	SUR.:0.558*0.558	Shielding Angle:

Table--2

UNIT: cd

C(DEG) γ (DEG)	95	100	105	110	115	120	125	130	135	140	145	150	155	160	165	170	175	180	185
0	995	995	995	995	995	995	995	995	995	995	995	995	995	995	995	995	995	995	995
5	983	983	983	983	983	983	984	984	984	985	985	986	986	987	988	989	990	991	989
10	971	971	971	971	970	970	970	970	970	970	970	970	971	972	973	975	976	978	976
15	957	957	957	957	956	955	954	952	951	950	950	949	949	950	951	953	955	958	954
20	924	924	924	924	925	926	927	928	928	926	924	922	921	921	921	923	925	929	925
25	888	888	887	887	887	887	887	888	889	891	892	890	887	885	885	886	888	892	888
30	852	851	850	849	848	846	845	844	843	844	845	848	847	843	841	842	844	849	844
35	795	796	796	797	798	799	801	798	795	793	793	793	796	796	792	791	793	798	792
40	738	738	738	738	737	738	738	740	743	741	737	736	736	740	737	734	735	741	735
45	680	680	680	678	677	676	675	674	675	676	680	675	672	673	676	671	671	677	671
50	608	608	609	609	610	611	610	608	606	605	606	610	606	604	606	604	603	608	602
55	535	535	534	534	534	534	534	535	536	534	532	532	535	531	530	533	529	534	528
60	462	461	460	460	459	458	457	456	456	457	457	455	454	457	452	454	451	455	450
65	381	381	381	380	380	380	380	378	377	375	374	375	374	372	374	370	370	373	369
70	300	300	300	299	299	298	298	297	296	295	293	292	291	291	289	289	289	290	288
75	220	220	220	219	219	218	217	215	214	213	212	211	210	209	209	208	207	209	207
80	141	141	140	140	139	138	136	136	135	134	133	132	132	130	125	118	118	131	130
85	62.7	62.1	61.5	61.1	60.7	60.3	59.9	59.7	59.6	59.2	59.0	58.5	57.7	55.6	50.3	42.3	34.4	42.3	50.0
90	8.45	7.93	7.26	6.64	6.12	5.61	5.08	4.58	4.10	3.40	2.96	2.32	1.56	1.40	1.39	1.37	1.36	1.19	0.81
95	0.00	0.00	0.00	0.00	0.00	0.00	0.00	0.00	0.00	0.00	0.00	0.00	0.00	0.00	0.00	0.00	0.00	0.00	0.00
100	0.00	0.00	0.00	0.00	0.00	0.00	0.00	0.00	0.00	0.00	0.00	0.00	0.00	0.00	0.00	0.00	0.00	0.00	0.00
105	0.00	0.00	0.00	0.00	0.00	0.00	0.00	0.00	0.00	0.00	0.00	0.00	0.00	0.00	0.00	0.00	0.00	0.00	0.00
110	0.00	0.00	0.00	0.00	0.00	0.00	0.00	0.00	0.00	0.00	0.00	0.00	0.00	0.00	0.00	0.00	0.00	0.00	0.00
115	0.00	0.00	0.00	0.00	0.00	0.00	0.00	0.00	0.00	0.00	0.00	0.00	0.00	0.00	0.00	0.00	0.00	0.00	0.00
120	0.00	0.00	0.00	0.00	0.00	0.00	0.00	0.00	0.00	0.00	0.00	0.00	0.00	0.00	0.00	0.00	0.00	0.00	0.00
125	0.00	0.00	0.00	0.00	0.00	0.00	0.00	0.00	0.00	0.00	0.00	0.00	0.00	0.00	0.00	0.00	0.00	0.00	0.00
130	0.00	0.00	0.00	0.00	0.00	0.00	0.00	0.00	0.00	0.00	0.00	0.00	0.00	0.00	0.00	0.00	0.00	0.00	0.00
135	0.00	0.00	0.00	0.00	0.00	0.00	0.00	0.00	0.00	0.00	0.00	0.00	0.00	0.00	0.00	0.00	0.00	0.00	0.00
140	0.00	0.00	0.00	0.00	0.00	0.00	0.00	0.00	0.00	0.00	0.00	0.00	0.00	0.00	0.00	0.00	0.00	0.00	0.00
145	0.00	0.00	0.00	0.00	0.00	0.00	0.00	0.00	0.00	0.00	0.00	0.00	0.00	0.00	0.00	0.00	0.00	0.00	0.00
150	0.00	0.00	0.00	0.00	0.00	0.00	0.00	0.00	0.00	0.00	0.00	0.00	0.00	0.00	0.00	0.00	0.00	0.00	0.00
155	0.00	0.00	0.00	0.00	0.00	0.00	0.00	0.00	0.00	0.00	0.00	0.00	0.00	0.00	0.00	0.00	0.00	0.00	0.00
160	0.00	0.00	0.00	0.00	0.00	0.00	0.00	0.00	0.00	0.00	0.00	0.00	0.00	0.00	0.00	0.00	0.00	0.00	0.00
165	0.00	0.00	0.00	0.00	0.00	0.00	0.00	0.00	0.00	0.00	0.00	0.00	0.00	0.00	0.00	0.00	0.00	0.00	0.00
170	0.00	0.00	0.00	0.00	0.00	0.00	0.00	0.00	0.00	0.00	0.00	0.00	0.00	0.00	0.00	0.00	0.00	0.00	0.00
175	0.00	0.00	0.00	0.00	0.00	0.00	0.00	0.00	0.00	0.00	0.00	0.00	0.00	0.00	0.00	0.00	0.00	0.00	0.00
180	0.00	0.00	0.00	0.00	0.00	0.00	0.00	0.00	0.00	0.00	0.00	0.00	0.00	0.00	0.00	0.00	0.00	0.00	0.00

C Range: 0 - 360DEG
 C Interval: 5.0DEG
 Test Speed: HIGH
 Temperature:22DEG
 Operators:HUA
 Test Date:2018-09-12

γ Range: 0 - 180DEG
 γ Interval: 0.5DEG
 Test System:EVERFINE GO-2000B_V1 SYSTEM V2.0.350
 Humidity:43%
 Test Distance:12.218m [K=1.0000]
 Remarks:

LUMINOUS DISTRIBUTION INTENSITY DATA

Test:U:120.2V I:0.2197A P:26.01W PF:0.9867 Lamp Flux:2950.88x1 lm		
NAME: ASD Lighting corp	TYPE:LED PANEL	WEIGHT:
SPEC.: ASD-ELP05-22D27CC-STD(3500K)	DIM.: 603x603mm	SERIAL No.:BLD20180912P06
MFR.: ASD Lighting corp	SUR.:0.558*0.558	Shielding Angle:

Table--3

UNIT: cd

C(DEG) γ (DEG)	190	195	200	205	210	215	220	225	230	235	240	245	250	255	260	265	270	275	280
0	995	995	995	995	995	995	995	995	995	995	995	995	995	995	995	995	995	995	995
5	988	987	987	986	985	984	984	983	983	983	982	982	982	982	982	982	982	982	982
10	974	973	971	970	969	969	968	968	968	968	968	968	968	969	969	969	969	969	969
15	952	950	949	948	948	948	948	949	950	951	952	953	954	954	954	954	954	954	954
20	922	920	919	919	920	922	924	925	925	924	922	921	921	920	920	919	919	919	920
25	885	883	883	885	887	889	887	885	884	883	882	882	882	882	883	883	883	883	883
30	841	840	841	845	845	841	840	839	839	840	841	842	843	845	846	846	846	846	846
35	790	790	794	793	790	789	789	790	793	796	794	792	791	790	789	789	789	789	789
40	733	735	737	733	732	733	736	738	734	733	732	731	731	731	732	732	732	732	732
45	670	674	670	669	671	675	671	669	669	669	669	670	672	673	673	673	673	673	673
50	603	603	601	602	605	602	600	601	602	604	604	603	602	602	601	601	601	601	601
55	531	528	528	531	528	527	529	531	529	528	528	528	528	528	528	528	528	528	528
60	452	450	454	450	451	453	452	451	451	451	452	452	453	454	454	454	455	454	454
65	369	372	369	371	372	371	371	372	374	375	375	375	375	374	375	375	375	374	374
70	287	288	288	289	289	290	292	292	293	293	294	294	294	294	294	295	294	294	294
75	207	208	207	209	210	210	211	212	212	213	214	215	215	215	215	215	215	215	215
80	130	130	131	131	132	132	133	133	134	134	135	136	136	137	137	136	136	136	136
85	49.8	52.2	56.2	57.2	57.9	58.3	58.6	58.7	58.7	58.7	58.9	59.0	59.2	59.4	59.7	60.0	59.8	59.3	58.6
90	0.81	0.81	0.82	1.12	2.07	2.60	3.25	3.79	4.13	4.59	5.08	5.51	5.94	6.45	6.96	7.38	7.37	6.96	6.39
95	0.00	0.00	0.00	0.00	0.00	0.00	0.00	0.00	0.00	0.00	0.00	0.00	0.00	0.00	0.00	0.00	0.00	0.00	0.00
100	0.00	0.00	0.00	0.00	0.00	0.00	0.00	0.00	0.00	0.00	0.00	0.00	0.00	0.00	0.00	0.00	0.00	0.00	0.00
105	0.00	0.00	0.00	0.00	0.00	0.00	0.00	0.00	0.00	0.00	0.00	0.00	0.00	0.00	0.00	0.00	0.00	0.00	0.00
110	0.00	0.00	0.00	0.00	0.00	0.00	0.00	0.00	0.00	0.00	0.00	0.00	0.00	0.00	0.00	0.00	0.00	0.00	0.00
115	0.00	0.00	0.00	0.00	0.00	0.00	0.00	0.00	0.00	0.00	0.00	0.00	0.00	0.00	0.00	0.00	0.00	0.00	0.00
120	0.00	0.00	0.00	0.00	0.00	0.00	0.00	0.00	0.00	0.00	0.00	0.00	0.00	0.00	0.00	0.00	0.00	0.00	0.00
125	0.00	0.00	0.00	0.00	0.00	0.00	0.00	0.00	0.00	0.00	0.00	0.00	0.00	0.00	0.00	0.00	0.00	0.00	0.00
130	0.00	0.00	0.00	0.00	0.00	0.00	0.00	0.00	0.00	0.00	0.00	0.00	0.00	0.00	0.00	0.00	0.00	0.00	0.00
135	0.00	0.00	0.00	0.00	0.00	0.00	0.00	0.00	0.00	0.00	0.00	0.00	0.00	0.00	0.00	0.00	0.00	0.00	0.00
140	0.00	0.00	0.00	0.00	0.00	0.00	0.00	0.00	0.00	0.00	0.00	0.00	0.00	0.00	0.00	0.00	0.00	0.00	0.00
145	0.00	0.00	0.00	0.00	0.00	0.00	0.00	0.00	0.00	0.00	0.00	0.00	0.00	0.00	0.00	0.00	0.00	0.00	0.00
150	0.00	0.00	0.00	0.00	0.00	0.00	0.00	0.00	0.00	0.00	0.00	0.00	0.00	0.00	0.00	0.00	0.00	0.00	0.00
155	0.00	0.00	0.00	0.00	0.00	0.00	0.00	0.00	0.00	0.00	0.00	0.00	0.00	0.00	0.00	0.00	0.00	0.00	0.00
160	0.00	0.00	0.00	0.00	0.00	0.00	0.00	0.00	0.00	0.00	0.00	0.00	0.00	0.00	0.00	0.00	0.00	0.00	0.00
165	0.00	0.00	0.00	0.00	0.00	0.00	0.00	0.00	0.00	0.00	0.00	0.00	0.00	0.00	0.00	0.00	0.00	0.00	0.00
170	0.00	0.00	0.00	0.00	0.00	0.00	0.00	0.00	0.00	0.00	0.00	0.00	0.00	0.00	0.00	0.00	0.00	0.00	0.00
175	0.00	0.00	0.00	0.00	0.00	0.00	0.00	0.00	0.00	0.00	0.00	0.00	0.00	0.00	0.00	0.00	0.00	0.00	0.00
180	0.00	0.00	0.00	0.00	0.00	0.00	0.00	0.00	0.00	0.00	0.00	0.00	0.00	0.00	0.00	0.00	0.00	0.00	0.00

C Range: 0 - 360DEG
 C Interval: 5.0DEG
 Test Speed: HIGH
 Temperature:22DEG
 Operators:HUA
 Test Date:2018-09-12

γ Range: 0 - 180DEG
 γ Interval: 0.5DEG
 Test System:EVERFINE GO-2000B_V1 SYSTEM V2.0.350
 Humidity:43%
 Test Distance:12.218m [K=1.0000]
 Remarks:

LUMINOUS DISTRIBUTION INTENSITY DATA

Test:U:120.2V I:0.2197A P:26.01W PF:0.9867 Lamp Flux:2950.88x1 lm		
NAME: ASD Lighting corp	TYPE:LED PANEL	WEIGHT:
SPEC.: ASD-ELP05-22D27CC-STD(3500K)	DIM.: 603x603mm	SERIAL No.:BLD20180912P06
MFR.: ASD Lighting corp	SUR.:0.558*0.558	Shielding Angle:

Table--4

UNIT: cd

C(DEG) γ (DEG)	285	290	295	300	305	310	315	320	325	330	335	340	345	350	355				
0	995	995	995	995	995	995	995	995	995	995	995	995	995	995	995				
5	982	982	982	982	983	983	983	984	984	985	986	986	987	988	989				
10	969	969	968	968	968	968	968	968	969	969	970	971	972	974	976				
15	954	954	953	952	951	950	949	948	948	948	948	949	950	952	954				
20	920	921	922	923	924	925	925	924	922	920	919	919	920	922	925				
25	883	882	882	882	883	884	885	888	889	888	885	883	883	885	887				
30	845	843	842	841	840	839	839	840	842	845	845	842	840	840	843				
35	790	791	792	793	795	792	790	789	789	790	794	794	790	790	792				
40	731	731	731	732	733	734	737	735	733	732	733	738	735	733	734				
45	673	672	671	670	669	669	669	671	674	670	669	671	675	670	670				
50	602	602	603	605	605	603	601	600	601	605	602	601	604	603	601				
55	528	528	528	528	529	530	531	529	527	527	530	528	528	531	527				
60	454	453	452	451	451	451	451	452	453	450	449	452	449	452	449				
65	374	374	374	374	374	372	371	370	370	371	370	368	370	368	369				
70	294	294	294	293	292	291	291	290	288	287	288	288	287	286	288				
75	214	214	213	212	212	211	210	209	208	208	207	206	207	206	206				
80	135	135	134	133	132	131	131	130	130	129	129	129	128	129	128				
85	58.0	57.4	57.2	57.1	56.8	56.6	56.2	56.1	55.9	55.4	54.6	53.4	49.4	47.4	48.3				
90	5.71	5.09	4.64	4.29	3.81	3.27	2.58	2.23	1.80	1.05	0.81	0.81	0.81	0.81	0.81				
95	0.00	0.00	0.00	0.00	0.00	0.00	0.00	0.00	0.00	0.00	0.00	0.00	0.00	0.00	0.00				
100	0.00	0.00	0.00	0.00	0.00	0.00	0.00	0.00	0.00	0.00	0.00	0.00	0.00	0.00	0.00				
105	0.00	0.00	0.00	0.00	0.00	0.00	0.00	0.00	0.00	0.00	0.00	0.00	0.00	0.00	0.00				
110	0.00	0.00	0.00	0.00	0.00	0.00	0.00	0.00	0.00	0.00	0.00	0.00	0.00	0.00	0.00				
115	0.00	0.00	0.00	0.00	0.00	0.00	0.00	0.00	0.00	0.00	0.00	0.00	0.00	0.00	0.00				
120	0.00	0.00	0.00	0.00	0.00	0.00	0.00	0.00	0.00	0.00	0.00	0.00	0.00	0.00	0.00				
125	0.00	0.00	0.00	0.00	0.00	0.00	0.00	0.00	0.00	0.00	0.00	0.00	0.00	0.00	0.00				
130	0.00	0.00	0.00	0.00	0.00	0.00	0.00	0.00	0.00	0.00	0.00	0.00	0.00	0.00	0.00				
135	0.00	0.00	0.00	0.00	0.00	0.00	0.00	0.00	0.00	0.00	0.00	0.00	0.00	0.00	0.00				
140	0.00	0.00	0.00	0.00	0.00	0.00	0.00	0.00	0.00	0.00	0.00	0.00	0.00	0.00	0.00				
145	0.00	0.00	0.00	0.00	0.00	0.00	0.00	0.00	0.00	0.00	0.00	0.00	0.00	0.00	0.00				
150	0.00	0.00	0.00	0.00	0.00	0.00	0.00	0.00	0.00	0.00	0.00	0.00	0.00	0.00	0.00				
155	0.00	0.00	0.00	0.00	0.00	0.00	0.00	0.00	0.00	0.00	0.00	0.00	0.00	0.00	0.00				
160	0.00	0.00	0.00	0.00	0.00	0.00	0.00	0.00	0.00	0.00	0.00	0.00	0.00	0.00	0.00				
165	0.00	0.00	0.00	0.00	0.00	0.00	0.00	0.00	0.00	0.00	0.00	0.00	0.00	0.00	0.00				
170	0.00	0.00	0.00	0.00	0.00	0.00	0.00	0.00	0.00	0.00	0.00	0.00	0.00	0.00	0.00				
175	0.00	0.00	0.00	0.00	0.00	0.00	0.00	0.00	0.00	0.00	0.00	0.00	0.00	0.00	0.00				
180	0.00	0.00	0.00	0.00	0.00	0.00	0.00	0.00	0.00	0.00	0.00	0.00	0.00	0.00	0.00				

C Range: 0 - 360DEG
 C Interval: 5.0DEG
 Test Speed: HIGH
 Temperature:22DEG
 Operators:HUA
 Test Date:2018-09-12

γ Range: 0 - 180DEG
 γ Interval: 0.5DEG
 Test System:EVERFINE GO-2000B_V1 SYSTEM V2.0.350
 Humidity:43%
 Test Distance:12.218m [K=1.0000]
 Remarks: