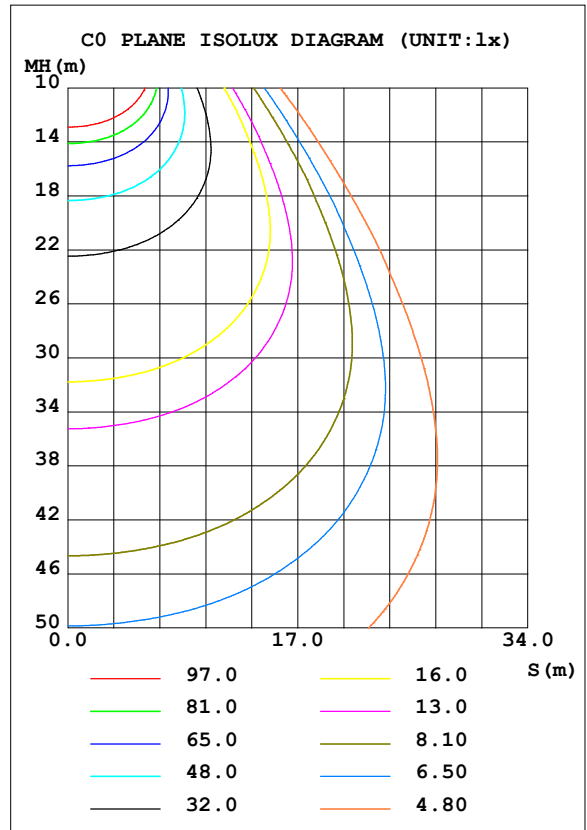
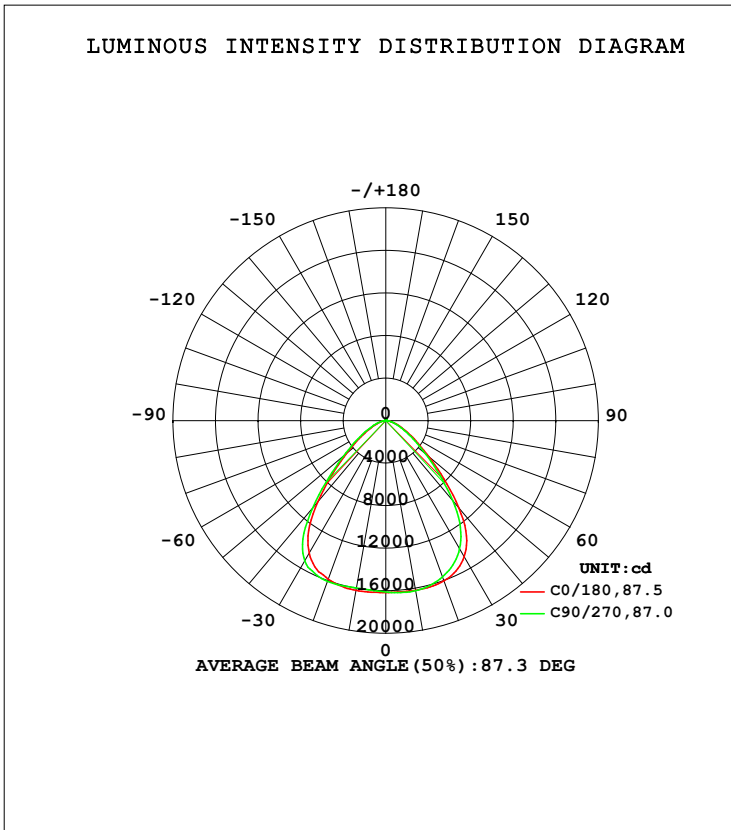


LUMINAIRE PHOTOMETRIC TEST REPORT

Test:U:122.0V I:1.934A P:240W PF:0.9966 Freq:59.98Hz Lamp Flux:34800x1 lm		
NAME: ASD-UHB3-240ADAC-BK-240W-3000K	TYPE:	WEIGHT:
SPEC.:	DIM.:	SERIAL No.:
MFR.: ASD LIGHTING CORP	SUR.:0.29*0.29m	Shielding Angle:

DATA OF LAMP		PHOTOMETRIC DATA Eff: 145 lm/W			
MODEL		I <sub>max</sub> (cd)	16250	S/MH (C0/180)	1.23
NOMINAL POWER (W)	240	LOR (%)	100.0	S/MH (C90/270)	1.26
RATED VOLTAGE (V)	120	TOTAL FLUX (lm)	34800	<input type="checkbox"/> UP, DN (C0-180)	0.5, 49.3
NOMINAL FLUX (lm)	34800	CIE CLASS	DIRECT	<input type="checkbox"/> UP, DN (C180-360)	0.5, 49.7
LAMPS INSIDE	1	<input type="checkbox"/> up (%)	0.9	CIBSE SHR NOM	1.25
TEST VOLTAGE (V)	120	<input type="checkbox"/> down (%)	99.1	CIBSE SHR MAX	1.30



C Range: 0 - 360DEG  
 C Interval: 45.0DEG  
 Test Speed: HIGH  
 Temperature: 25.1DEG  
 Operators: lianghaizhu  
 Test Date: 2023-04-08

Range: 0 - 180DEG  
 Interval: 1.0DEG  
 Test System: EVERFINE GO-2000A\_V1 SYSTEM V2.0.364  
 Humidity: 56%  
 Test Distance: 6.500m [K=1.0000]  
 Remarks:

## ZONAL FLUX DIAGRAM

## ZONAL FLUX DIAGRAM:

mm	C0	C45	C90	C135	C180	C225	C270	C315	mm	□ zone	□ total	%lum, lamp
10	1620	1624	1623	1621	1621	1608	1597	1602	0- 10	1540	1540	4.69,4.69
20	1602	1579	1564	1569	1585	1602	1609	1604	10- 20	4552	6092	18.6,18.6
30	1476	1433	1389	1414	1441	1481	1523	1497	20- 30	7105	13198	40.2,40.2
40	1070	1020	978.9	998.7	994.1	1038	1070	1051	30- 40	7953	21151	64.4,64.4
50	532.4	505.3	492.0	490.5	485.0	496.3	521.5	518.6	40- 50	5726	26877	81.9,81.9
60	258.7	229.9	233.3	246.2	215.6	235.3	245.6	244.7	50- 60	3167	30044	91.5,91.5
70	118.9	99.21	105.7	117.1	92.44	105.4	106.1	105.6	60- 70	1631	31675	96.5,96.5
80	38.30	34.07	36.92	40.02	28.53	30.64	29.96	29.93	70- 80	700.0	32374	98.6,98.6
90	1.734	1.737	1.544	1.732	1.477	1.596	1.638	1.610	80- 90	144.2	32519	99.1,99.1
100	1.557	1.628	1.658	1.638	1.613	1.531	1.509	1.518	90-100	15.26	32534	99.1,99.1
110	2.673	2.786	2.840	2.807	2.773	2.628	2.595	2.607	100-110	22.30	32556	99.2,99.2
120	4.151	4.303	4.381	4.330	4.286	4.081	4.041	4.052	110-120	34.00	32590	99.3,99.3
130	5.830	5.986	6.085	6.014	6.019	5.751	5.737	5.724	120-130	45.04	32635	99.4,99.4
140	7.464	7.626	7.724	7.661	7.710	7.456	7.453	7.444	130-140	52.02	32687	99.6,99.6
150	8.927	9.088	9.168	9.116	9.241	9.021	9.009	9.021	140-150	52.12	32739	99.7,99.7
160	10.49	10.58	10.73	10.62	10.86	10.60	10.65	10.62	150-160	45.34	32785	99.9,99.9
170	12.05	12.03	12.19	12.06	12.31	12.07	12.17	12.08	160-170	32.15	32817	100,100
180	12.91	12.78	12.92	12.80	12.92	12.77	12.93	12.80	170-180	11.89	32829	100,100
DEG	LUMINOUS INTENSITY:×10cd									UNIT:lm		

Conical surface Flux(90deg): 24396 lm

%lum = 74.3%

%lamp = 74.3%

Conical surface Flux(120deg): 30044 lm

%lum = 91.5%

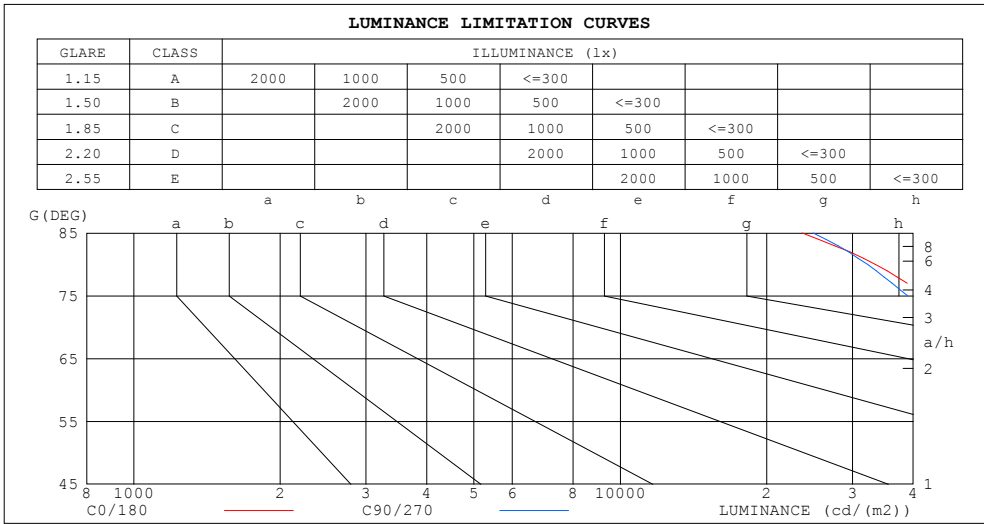
%lamp = 91.5%

C Range: 0 - 360DEG  
 C Interval: 45.0DEG  
 Test Speed: HIGH  
 Temperature:25.1DEG  
 Operators:lianghaizhu  
 Test Date:2023-04-08

□ Range: 0 - 180DEG  
 □ Interval: 1.0DEG  
 Test System:EVERFINE GO-2000A\_V1 SYSTEM V2.0.364  
 Humidity:56%  
 Test Distance:6.500m [K=1.0000]  
 Remarks:

LUMINANCE LIMITATION CURVES

Test:U:122.0V I:1.934A P:240W PF:0.9966 Freq:59.98Hz Lamp Flux:34800x1 lm		
NAME: ASD-UHB3-240ADAC-BK-240W-3000K	TYPE:	WEIGHT:
SPEC.:	DIM.:	SERIAL No.:
MFR.: ASD LIGHTING CORP	SUR.:0.29*0.29m	Shielding Angle:



LUMINANCE cd/(m2)		
G (DEG)	C0/180	C90/270
85	23651	24905
80	33422	32210
75	42744	38950
70	52679	46845
65	64000	56756
60	78406	70708
55	97211	89473
50	125502	115965
45	165617	153117

C Range: 0 - 360DEG  
 C Interval: 45.0DEG  
 Test Speed: HIGH  
 Temperature:25.1DEG  
 Operators:lianghaizhu  
 Test Date:2023-04-08

Range: 0 - 180DEG  
 Interval: 1.0DEG  
 Test System:EVERFINE GO-2000A\_V1 SYSTEM V2.0.364  
 Humidity:56%  
 Test Distance:6.500m [K=1.0000]  
 Remarks:

WEC AND CCEC

Test:U:122.0V I:1.934A P:240W PF:0.9966 Freq:59.98Hz Lamp Flux:34800x1 lm		
NAME: ASD-UHB3-240ADAC-BK-240W-3000K	TYPE:	WEIGHT:
SPEC.:	DIM.:	SERIAL No.:
MFR.: ASD LIGHTING CORP	SUR.:0.29*0.29m	Shielding Angle:

<input type="checkbox"/> cc	80%	70%	50%	30%	10%	0
<input type="checkbox"/> w	50% 30% 10%	50% 30% 10%	50% 30% 10%	50% 30% 10%	50% 30% 10%	0
<input type="checkbox"/> fc	20%	20%	20%	20%	20%	0
RCR	RCR:Room Cavity Ratio		Wall Exitance Coefficients (WEC)			
0.0						
1.0	.239 .136 .043	.232 .132 .042	.218 .125 .040	.206 .119 .038	.195 .113 .036	
2.0	.231 .127 .039	.225 .124 .038	.213 .119 .037	.203 .114 .036	.193 .109 .034	
3.0	.219 .117 .035	.214 .115 .034	.204 .110 .034	.194 .106 .033	.186 .103 .032	
4.0	.207 .108 .032	.202 .106 .031	.193 .102 .031	.185 .099 .030	.177 .096 .029	
5.0	.195 .099 .029	.191 .098 .029	.183 .095 .028	.176 .093 .028	.169 .090 .027	
6.0	.184 .092 .026	.180 .091 .026	.173 .089 .026	.167 .087 .025	.160 .084 .025	
7.0	.174 .086 .024	.170 .085 .024	.164 .083 .024	.158 .081 .024	.153 .079 .023	
8.0	.164 .080 .023	.161 .079 .022	.156 .078 .022	.150 .076 .022	.145 .075 .022	
9.0	.156 .075 .021	.153 .075 .021	.148 .073 .021	.143 .072 .021	.138 .070 .020	
10.0	.148 .071 .020	.145 .070 .020	.141 .069 .019	.136 .068 .019	.132 .066 .019	

<input type="checkbox"/> cc	80%	70%	50%	30%	10%	0
<input type="checkbox"/> w	50% 30% 10%	50% 30% 10%	50% 30% 10%	50% 30% 10%	50% 30% 10%	0
<input type="checkbox"/> fc	20%	20%	20%	20%	20%	0
RCR	RCR:Room Cavity Ratio		Ceiling Cavity Exitance Coefficients (CCEC)			
0.0	.198 .198 .198	.169 .169 .169	.115 .115 .115	.066 .066 .066	.021 .021 .021	
1.0	.183 .164 .147	.156 .141 .127	.107 .097 .088	.062 .056 .051	.020 .018 .016	
2.0	.171 .140 .113	.147 .120 .097	.101 .083 .068	.058 .048 .040	.019 .016 .013	
3.0	.162 .121 .089	.139 .105 .077	.095 .073 .054	.055 .042 .032	.018 .014 .010	
4.0	.154 .107 .072	.132 .093 .063	.091 .065 .044	.053 .038 .026	.017 .012 .009	
5.0	.146 .097 .060	.126 .084 .052	.087 .058 .037	.050 .034 .022	.016 .011 .007	
6.0	.140 .088 .051	.120 .076 .044	.083 .053 .031	.048 .031 .019	.016 .010 .006	
7.0	.133 .081 .044	.115 .070 .038	.079 .049 .027	.046 .029 .016	.015 .009 .005	
8.0	.128 .075 .039	.110 .065 .034	.076 .046 .024	.044 .027 .014	.014 .009 .005	
9.0	.122 .070 .035	.105 .061 .030	.073 .043 .022	.043 .025 .013	.014 .008 .004	
10.0	.117 .066 .032	.101 .057 .028	.070 .040 .020	.041 .024 .012	.013 .008 .004	

C Range: 0 - 360DEG  
 C Interval: 45.0DEG  
 Test Speed: HIGH  
 Temperature:25.1DEG  
 Operators:lianghaizhu  
 Test Date:2023-04-08

Range: 0 - 180DEG  
 Interval: 1.0DEG  
 Test System:EVERFINE GO-2000A\_V1 SYSTEM V2.0.364  
 Humidity:56%  
 Test Distance:6.500m [K=1.0000]  
 Remarks:

UGR(Unified Glare Rating) Table

Test:U:122.0V I:1.934A P:240W PF:0.9966 Freq:59.98Hz Lamp Flux:34800x1 lm										
NAME: ASD-UHB3-240ADAC-BK-240W-3000K					TYPE:			WEIGHT:		
SPEC.:					DIM.:			SERIAL No.:		
MFR.: ASD LIGHTING CORP					SUR.:0.29*0.29m			Shielding Angle:		
ceiling/cavity	0.7	0.7	0.5	0.5	0.3	0.7	0.7	0.5	0.5	0.3
walls	0.5	0.3	0.5	0.3	0.3	0.5	0.3	0.5	0.3	0.3
working plane	0.2	0.2	0.2	0.2	0.2	0.2	0.2	0.2	0.2	0.2
Room dimensions	Viewed crosswise					Viewed endwise				
x = 2H y = 2H	28.0	29.3	28.3	29.5	29.7	27.7	28.9	27.9	29.1	29.4
3H	28.4	29.6	28.7	29.8	30.1	28.0	29.2	28.3	29.4	29.7
4H	28.6	29.7	28.9	29.9	30.2	28.2	29.3	28.5	29.5	29.8
6H	28.6	29.7	29.0	29.9	30.2	28.2	29.3	28.6	29.5	29.8
8H	28.6	29.6	29.0	29.9	30.2	28.2	29.2	28.6	29.5	29.8
12H	28.6	29.6	29.0	29.9	30.2	28.2	29.2	28.6	29.5	29.8
4H 2H	28.1	29.2	28.4	29.4	29.7	27.8	28.9	28.1	29.1	29.4
3H	28.6	29.6	29.0	29.9	30.2	28.3	29.2	28.6	29.5	29.8
4H	28.8	29.7	29.2	30.0	30.4	28.5	29.3	28.8	29.7	30.0
6H	29.0	29.7	29.4	30.1	30.5	28.6	29.4	29.0	29.7	30.1
8H	29.0	29.7	29.4	30.1	30.5	28.6	29.3	29.1	29.7	30.1
12H	29.0	29.6	29.4	30.0	30.4	28.7	29.3	29.1	29.7	30.1
8H 4H	28.8	29.5	29.2	29.9	30.3	28.5	29.2	28.9	29.6	30.0
6H	29.0	29.6	29.5	30.0	30.5	28.7	29.3	29.1	29.7	30.1
8H	29.1	29.6	29.6	30.0	30.5	28.8	29.3	29.2	29.7	30.2
12H	29.1	29.6	29.6	30.0	30.5	28.8	29.2	29.3	29.7	30.2
12H 4H	28.8	29.4	29.2	29.8	30.2	28.5	29.1	28.9	29.5	29.9
6H	29.0	29.5	29.5	30.0	30.4	28.7	29.2	29.1	29.6	30.1
8H	29.1	29.5	29.6	30.0	30.5	28.8	29.2	29.3	29.7	30.2
Variations with the observer position at spacings:										
S = 1.0H	+ 0.9 / - 1.2					+ 0.9 / - 1.2				
1.5H	+ 1.0 / - 0.9					+ 0.9 / - 0.8				
2.0H	+ 2.0 / - 1.6					+ 1.9 / - 1.5				

CIE Pub.117, 32829 lm Total Lamp Luminous Flux Corrected (8log(F/F0) = 12.1)

C Range: 0 - 360DEG  
 C Interval: 45.0DEG  
 Test Speed: HIGH  
 Temperature:25.1DEG  
 Operators:lianghaizhu  
 Test Date:2023-04-08

Range: 0 - 180DEG  
 Interval: 1.0DEG  
 Test System:EVERFINE GO-2000A\_V1 SYSTEM V2.0.364  
 Humidity:56%  
 Test Distance:6.500m [K=1.0000]  
 Remarks:

## UTILIZATION FACTORS TABLE

Test:U:122.0V I:1.934A P:240W PF:0.9966 Freq:59.98Hz Lamp Flux:34800x1 lm		
NAME: ASD-UHB3-240ADAC-BK-240W-3000K	TYPE:	WEIGHT:
SPEC.:	DIM.:	SERIAL No.:
MFR.: ASD LIGHTING CORP	SUR.:0.29*0.29m	Shielding Angle:

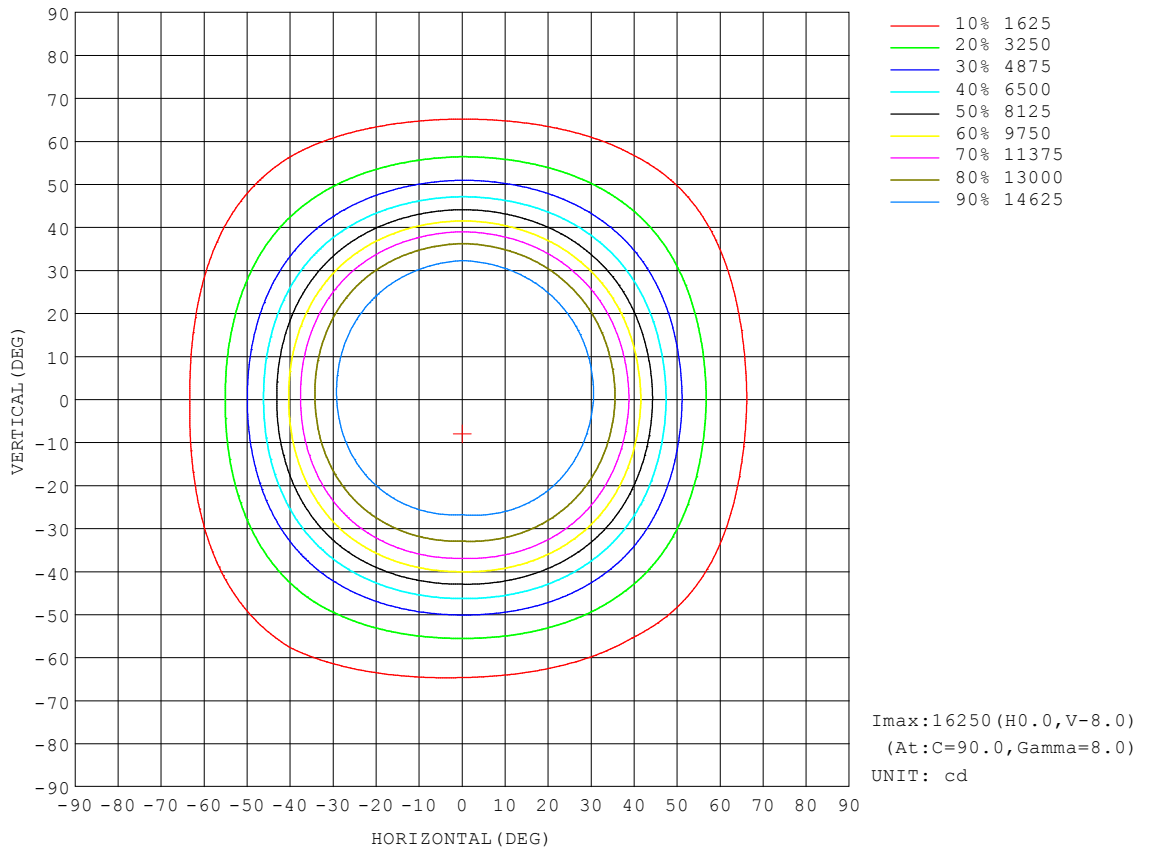
REFLECTANCE										
Ceiling	0.8	0.8	0.8	0.7	0.7	0.7	0.5	0.5	0.5	0
Walls	0.7	0.5	0.3	0.7	0.5	0.3	0.7	0.5	0.3	0
Working plane	0.2	0.2	0.2	0.2	0.2	0.2	0.2	0.2	0.2	0
ROOM INDEX	UTILIZATION FACTORS (PERCENT) $k(RI) \times RCR = 5$									
k = 0.60	69	60	54	68	59	54	67	59	54	48
0.80	79	70	64	78	69	64	76	68	63	58
1.00	86	78	72	85	77	72	83	78	71	65
1.25	92	84	79	91	84	79	89	82	78	72
1.50	96	89	84	95	88	83	92	86	82	76
2.00	102	95	90	100	94	90	97	92	88	81
2.50	104	99	94	102	97	93	99	95	91	84
3.00	107	102	98	105	100	97	101	97	94	87
4.00	110	106	102	107	104	101	103	100	98	90
5.00	112	108	105	109	106	103	105	102	100	91
ROOM INDEX	UF(total)									Direct
According to DIN EN 13032-2 2004			Suspended				SHRNOM = 1.25			

C Range: 0 - 360DEG  
 C Interval: 45.0DEG  
 Test Speed: HIGH  
 Temperature:25.1DEG  
 Operators:lianghaizhu  
 Test Date:2023-04-08

Range: 0 - 180DEG  
 Interval: 1.0DEG  
 Test System:EVERFINE GO-2000A\_V1 SYSTEM V2.0.364  
 Humidity:56%  
 Test Distance:6.500m [K=1.0000]  
 Remarks:

ISOCANDELA DIAGRAM

Test:U:122.0V I:1.934A P:240W PF:0.9966 Freq:59.98Hz Lamp Flux:34800x1 lm		
NAME: ASD-UHB3-240ADAC-BK-240W-3000K	TYPE:	WEIGHT:
SPEC.:	DIM.:	SERIAL No.:
MFR.: ASD LIGHTING CORP	SUR.:0.29*0.29m	Shielding Angle:

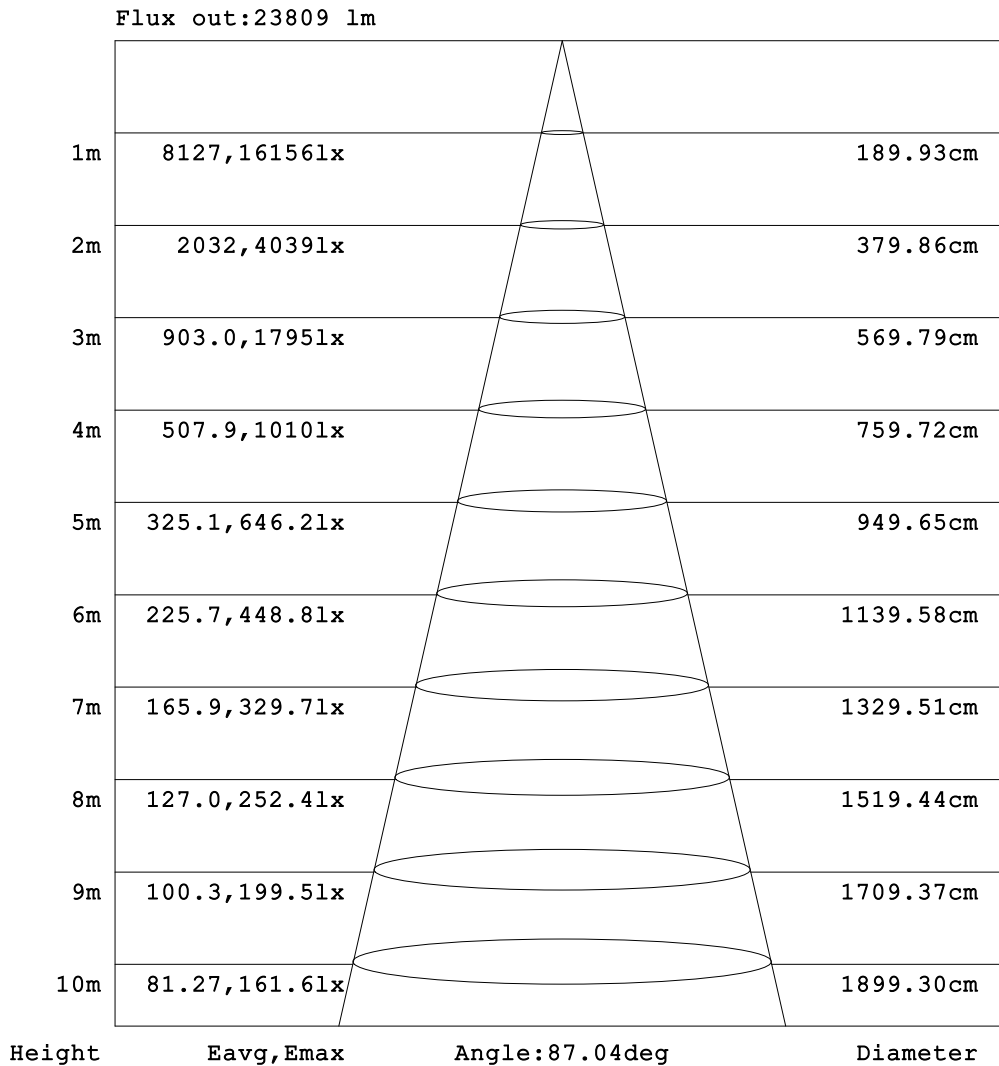


C Range: 0 - 360DEG  
 C Interval: 45.0DEG  
 Test Speed: HIGH  
 Temperature:25.1DEG  
 Operators:lianghaizhu  
 Test Date:2023-04-08

□ Range: 0 - 180DEG  
 □ Interval: 1.0DEG  
 Test System:EVERFINE GO-2000A\_V1 SYSTEM V2.0.364  
 Humidity:56%  
 Test Distance:6.500m [K=1.0000]  
 Remarks:

AAI Figure

Test:U:122.0V I:1.934A P:240W PF:0.9966 Freq:59.98Hz Lamp Flux:34800x1 lm		
NAME: ASD-UHB3-240ADAC-BK-240W-3000K	TYPE:	WEIGHT:
SPEC.:	DIM.:	SERIAL No.:
MFR.: ASD LIGHTING CORP	SUR.:0.29*0.29m	Shielding Angle:



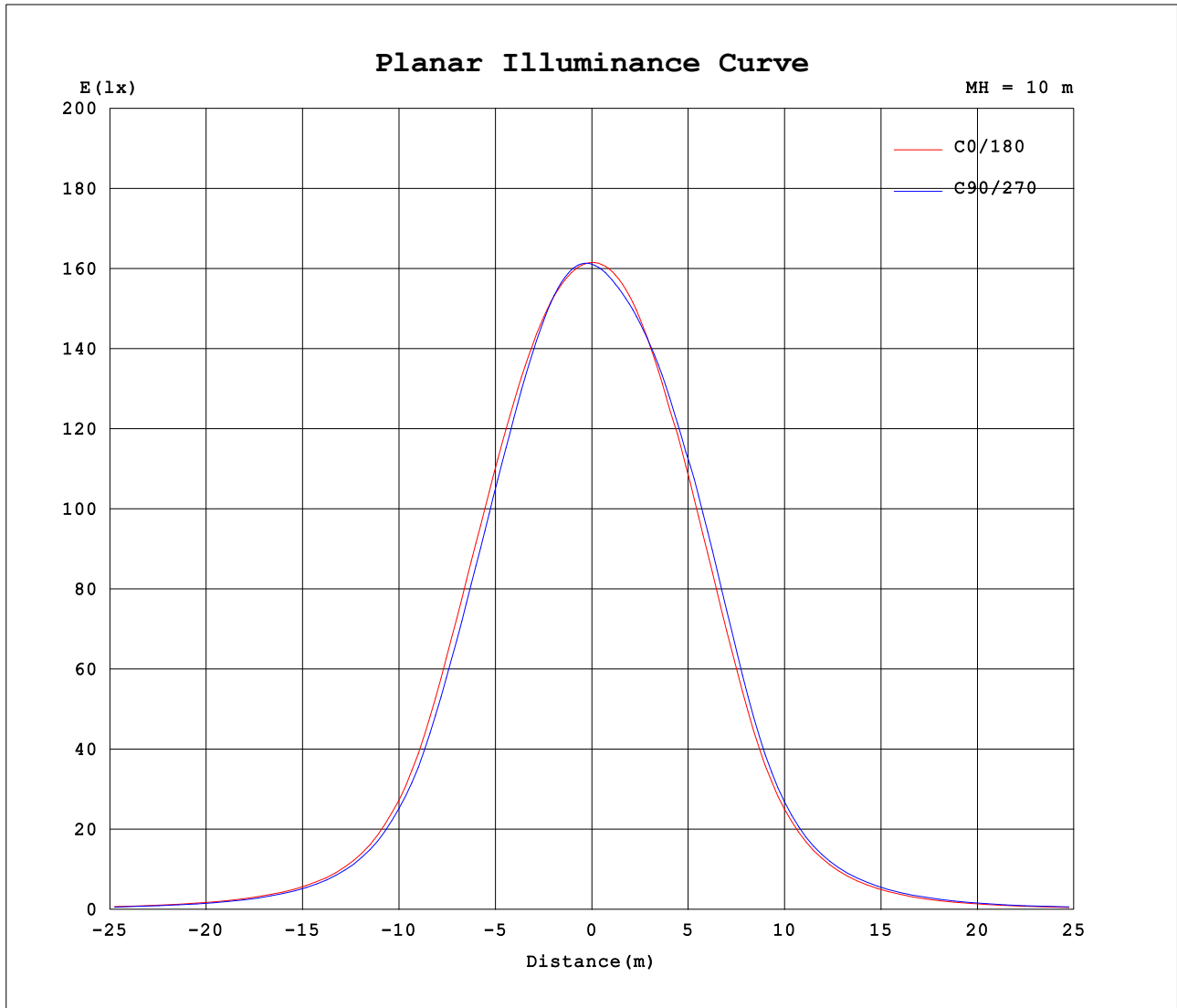
Note:The Curves indicate the illuminated area and the average illumination when the luminaire is at different distance.

C Range: 0 - 360DEG  
 C Interval: 45.0DEG  
 Test Speed: HIGH  
 Temperature:25.1DEG  
 Operators:lianghaizhu  
 Test Date:2023-04-08

□ Range: 0 - 180DEG  
 □ Interval: 1.0DEG  
 Test System:EVERFINE GO-2000A\_V1 SYSTEM V2.0.364  
 Humidity:56%  
 Test Distance:6.500m [K=1.0000]  
 Remarks:



Planar Illuminance Curve



C Range: 0 - 360DEG  
 C Interval: 45.0DEG  
 Test Speed: HIGH  
 Temperature: 25.1DEG  
 Operators: lianghaizhu  
 Test Date: 2023-04-08

Range: 0 - 180DEG  
 Interval: 1.0DEG  
 Test System: EVERFINE GO-2000A\_V1 SYSTEM V2.0.364  
 Humidity: 56%  
 Test Distance: 6.500m [K=1.0000]  
 Remarks:

LUMINOUS DISTRIBUTION INTENSITY DATA

Test:U:122.0V I:1.934A P:240W PF:0.9966 Freq:59.98Hz Lamp Flux:34800x1 lm		
NAME: ASD-UHB3-240ADAC-BK-240W-3000K	TYPE:	WEIGHT:
SPEC.:	DIM.:	SERIAL No.:
MFR.: ASD LIGHTING CORP	SUR.:0.29*0.29m	Shielding Angle:

Table--1

UNIT: x10cd

C (DEG) □ (DEG)	0	45	90	135	180	225	270	315											
0	1616	1614	1611	1609	1616	1614	1611	1609											
5	1616	1622	1623	1619	1619	1608	1600	1601											
10	1620	1624	1623	1621	1621	1608	1597	1602											
15	1618	1612	1605	1606	1613	1611	1605	1607											
20	1602	1579	1564	1569	1585	1602	1609	1604											
25	1562	1533	1496	1519	1542	1567	1584	1575											
30	1476	1433	1389	1414	1441	1481	1523	1497											
35	1324	1271	1224	1249	1266	1317	1359	1333											
40	1070	1020	979	999	994	1038	1070	1051											
45	773	735	715	716	709	736	760	753											
50	532	505	492	491	485	496	522	519											
55	368	345	339	343	327	339	360	358											
60	259	230	233	246	216	235	246	245											
65	179	150	158	174	141	161	164	164											
70	119	99.2	106	117	92.4	105	106	106											
75	73.0	62.4	66.5	73.4	55.8	62.1	62.0	61.7											
80	38.3	34.1	36.9	40.0	28.5	30.6	30.0	29.9											
85	13.6	13.1	14.3	15.3	8.57	8.52	7.92	8.23											
90	1.73	1.74	1.54	1.73	1.48	1.60	1.64	1.61											
95	1.26	1.46	1.36	1.43	1.22	1.26	1.15	1.27											
100	1.56	1.63	1.66	1.64	1.61	1.53	1.51	1.52											
105	2.06	2.15	2.19	2.17	2.14	2.03	2.00	2.01											
110	2.67	2.79	2.84	2.81	2.77	2.63	2.60	2.61											
115	3.38	3.51	3.58	3.53	3.49	3.32	3.28	3.29											
120	4.15	4.30	4.38	4.33	4.29	4.08	4.04	4.05											
125	4.98	5.14	5.23	5.17	5.13	4.89	4.86	4.86											
130	5.83	5.99	6.09	6.01	6.02	5.75	5.74	5.72											
135	6.67	6.82	6.93	6.84	6.88	6.61	6.62	6.60											
140	7.46	7.63	7.72	7.66	7.71	7.46	7.45	7.44											
145	8.21	8.38	8.46	8.41	8.48	8.25	8.24	8.24											
150	8.93	9.09	9.17	9.12	9.24	9.02	9.01	9.02											
155	9.69	9.81	9.92	9.84	10.0	9.79	9.81	9.80											
160	10.5	10.6	10.7	10.6	10.9	10.6	10.6	10.6											
165	11.3	11.4	11.5	11.4	11.7	11.4	11.5	11.4											
170	12.0	12.0	12.2	12.1	12.3	12.1	12.2	12.1											
175	12.6	12.6	12.7	12.6	12.8	12.6	12.7	12.6											
180	12.9	12.8	12.9	12.8	12.9	12.8	12.9	12.8											

C Range: 0 - 360DEG  
 C Interval: 45.0DEG  
 Test Speed: HIGH  
 Temperature:25.1DEG  
 Operators:lianghaizhu  
 Test Date:2023-04-08

□ Range: 0 - 180DEG  
 □ Interval: 1.0DEG  
 Test System:EVERFINE GO-2000A\_V1 SYSTEM V2.0.364  
 Humidity:56%  
 Test Distance:6.500m [K=1.0000]  
 Remarks: