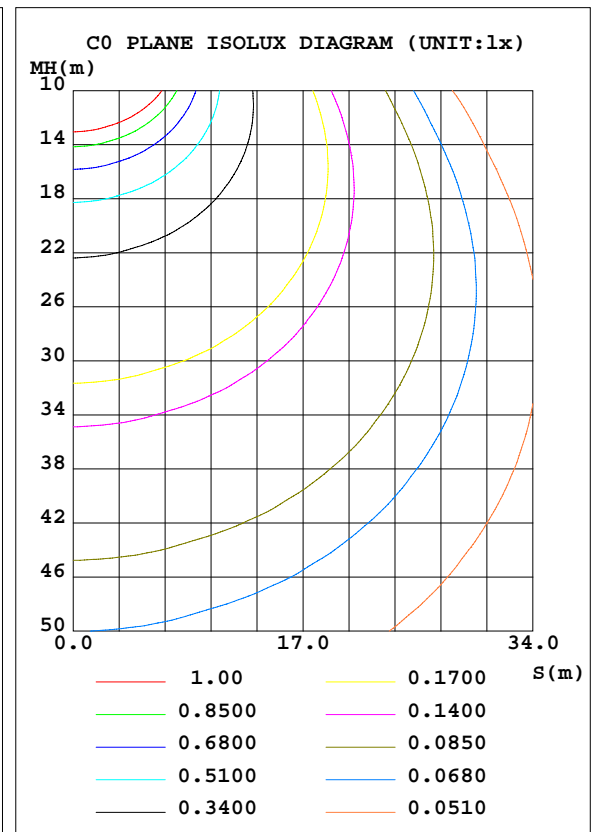
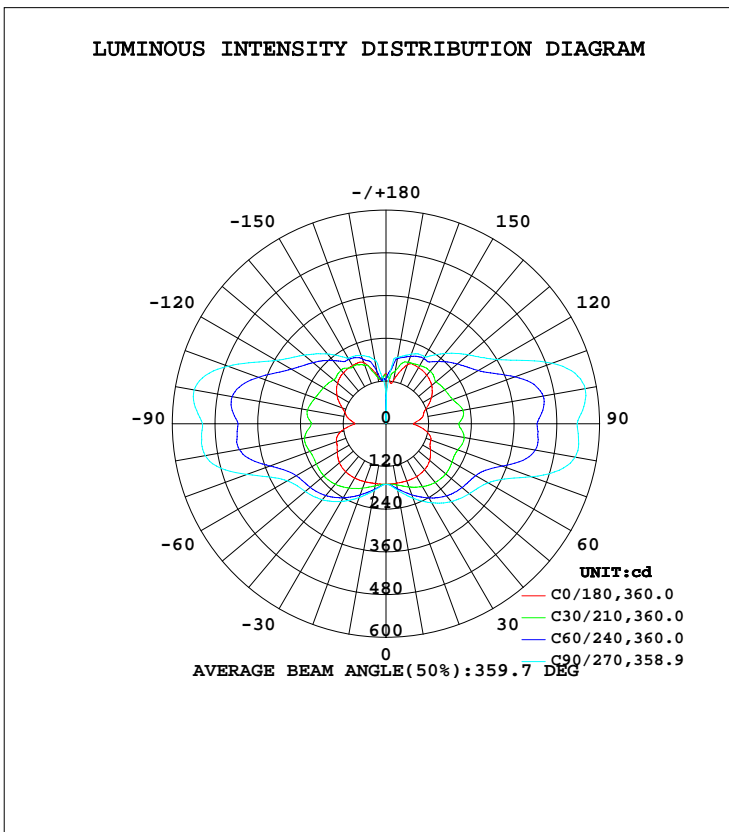


LUMINAIRE PHOTOMETRIC TEST REPORT

Test:U:277.00V I:0.1611A P:37.380W PF:0.8374 Freq:60.00Hz Lamp Flux:3284.9x1 lm		
NAME:	TYPE:LED	WEIGHT:
SPEC.:	DIM.:	SERIAL No.:
MFR.: ASD Lighting corp	SUR.:	Shielding Angle:

DATA OF LAMP		PHOTOMETRIC DATA Eff: 87.88 lm/W			
MODEL	ASD-LWS27-MV-72D40CC-BK	I _{max} (cd)	568.0	S/MH(C0/180)	1.59
NOMINAL POWER(W)	40	LOR(%)	100.0	S/MH(C90/270)	2.27
RATED VOLTAGE(V)	120-277	TOTAL FLUX(lm)	3284.9	η UP, DN(C0-180)	25.0,25.5
NOMINAL FLUX(lm)	3284.9	CIE CLASS	DIFFUSE	η UP, DN(C180-360)	24.5,25.0
LAMPS INSIDE	1	η up(%)	49.5	CIBSE SHR NOM	2.00
TEST VOLTAGE(V)	277	η down(%)	50.5	CIBSE SHR MAX	2.00



C Range: 0 - 360DEG
 C Interval: 15.0DEG
 Test Speed: HIGH
 Temperature: 25.0DEG
 Operators: Alan Wang
 Test Date: 08 May 2023

γ Range: 0 - 180DEG
 γ Interval: 1.0DEG
 Test System: EVERFINE GO-R5000_V2 SYSTEM V2.00.416
 Humidity: 43.5%
 Test Distance: 2.500m [K=1.0390]
 Remarks:

ZONAL FLUX DIAGRAM

ZONAL FLUX DIAGRAM:

γ	C0	C45	C90	C135	C180	C225	C270	C315	γ	Φ zone	Φ total	%lum,lamp
10	169.7	180.7	189.6	181.7	170.8	183.0	190.2	181.5	0- 10	16.77	16.77	0.51,0.51
20	171.2	201.8	222.3	203.7	173.4	203.9	220.4	200.7	10- 20	54.12	70.89	2.16,2.16
30	171.8	224.6	256.7	228.2	176.1	226.7	251.8	221.4	20- 30	97.55	168.4	5.13,5.13
40	168.8	242.8	285.3	248.3	176.2	245.7	278.5	238.4	30- 40	144.0	312.5	9.51,9.51
50	160.3	252.3	305.8	260.5	170.9	256.7	296.0	247.3	40- 50	187.3	499.8	15.2,15.2
60	144.3	255.1	331.7	266.2	158.1	261.6	320.9	249.8	50- 60	222.1	721.9	22,22
70	134.8	276.7	435.2	289.5	147.8	284.1	416.3	270.1	60- 70	261.7	983.5	29.9,29.9
80	113.4	319.5	540.1	325.8	128.9	320.7	515.4	305.3	70- 80	327.5	1311	39.9,39.9
90	77.30	312.6	536.9	314.3	87.79	310.0	515.4	294.7	80- 90	347.4	1658	50.5,50.5
100	103.3	329.6	568.0	329.6	110.9	326.3	547.3	309.0	90-100	352.4	2011	61.2,61.2
110	118.6	286.3	497.2	293.1	130.9	292.6	473.0	270.6	100-110	335.4	2346	71.4,71.4
120	147.9	245.6	361.3	254.1	159.2	255.3	356.1	238.6	110-120	268.2	2614	79.6,79.6
130	167.5	224.6	301.5	232.3	177.8	232.7	300.2	219.3	120-130	214.5	2829	86.1,86.1
140	178.5	201.7	257.8	208.5	186.5	206.7	255.8	197.8	130-140	171.6	3001	91.3,91.3
150	182.6	203.5	217.6	208.4	188.8	203.2	213.2	200.1	140-150	128.9	3130	95.3,95.3
160	176.5	193.6	208.6	198.0	183.0	187.4	204.2	194.8	150-160	90.77	3220	98,98
170	125.3	175.3	189.5	155.0	136.5	135.0	181.7	181.9	160-170	50.92	3271	99.6,99.6
180	140.9	127.1	69.79	124.0	139.4	131.1	83.05	120.5	170-180	13.68	3285	100,100
DEG	LUMINOUS INTENSITY:cd									UNIT:lm		

Conical surface Flux(90deg): 401.2 lm

%lum = 12.2%

%lamp = 12.2%

Conical surface Flux(120deg): 721.87 lm

%lum = 22.0%

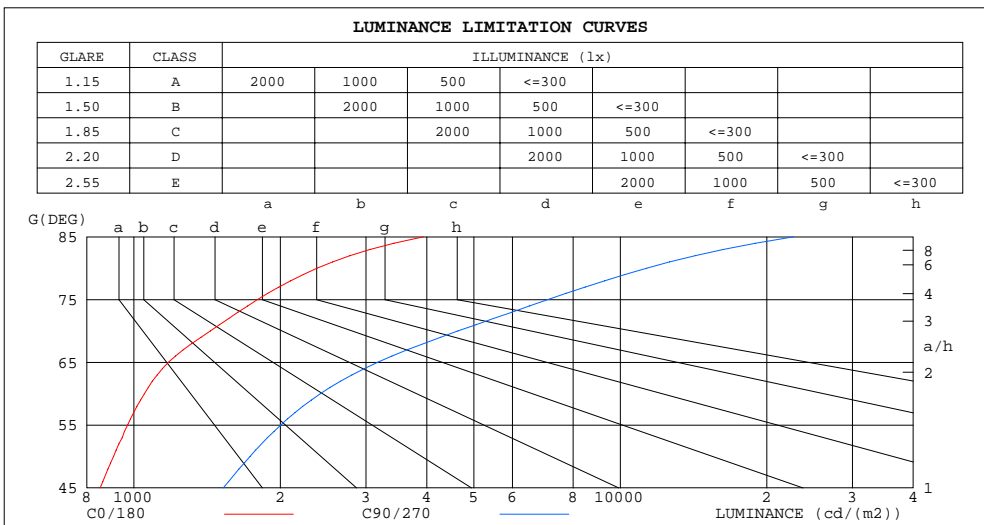
%lamp = 22.0%

C Range: 0 - 360DEG
 C Interval: 15.0DEG
 Test Speed: HIGH
 Temperature: 25.0DEG
 Operators: Alan Wang
 Test Date: 08 May 2023

γ Range: 0 - 180DEG
 γ Interval: 1.0DEG
 Test System: EVERFINE GO-R5000_V2 SYSTEM V2.00.416
 Humidity: 43.5%
 Test Distance: 2.500m [K=1.0390]
 Remarks:

LUMINANCE LIMITATION CURVES

Test:U:277.00V I:0.1611A P:37.380W PF:0.8374 Freq:60.00Hz Lamp Flux:3284.9x1 lm		
NAME:	TYPE:LED	WEIGHT:
SPEC.:	DIM.:	SERIAL No.:
MFR.: ASD Lighting corp	SUR.:	Shielding Angle:



LUMINANCE cd/(m2)		
G(DEG)	C0/180	C90/270
85	3935	22699
80	2380	11331
75	1795	7098
70	1436	4635
65	1177	3168
60	1051	2417
55	971	2003
50	908	1733
45	852	1527

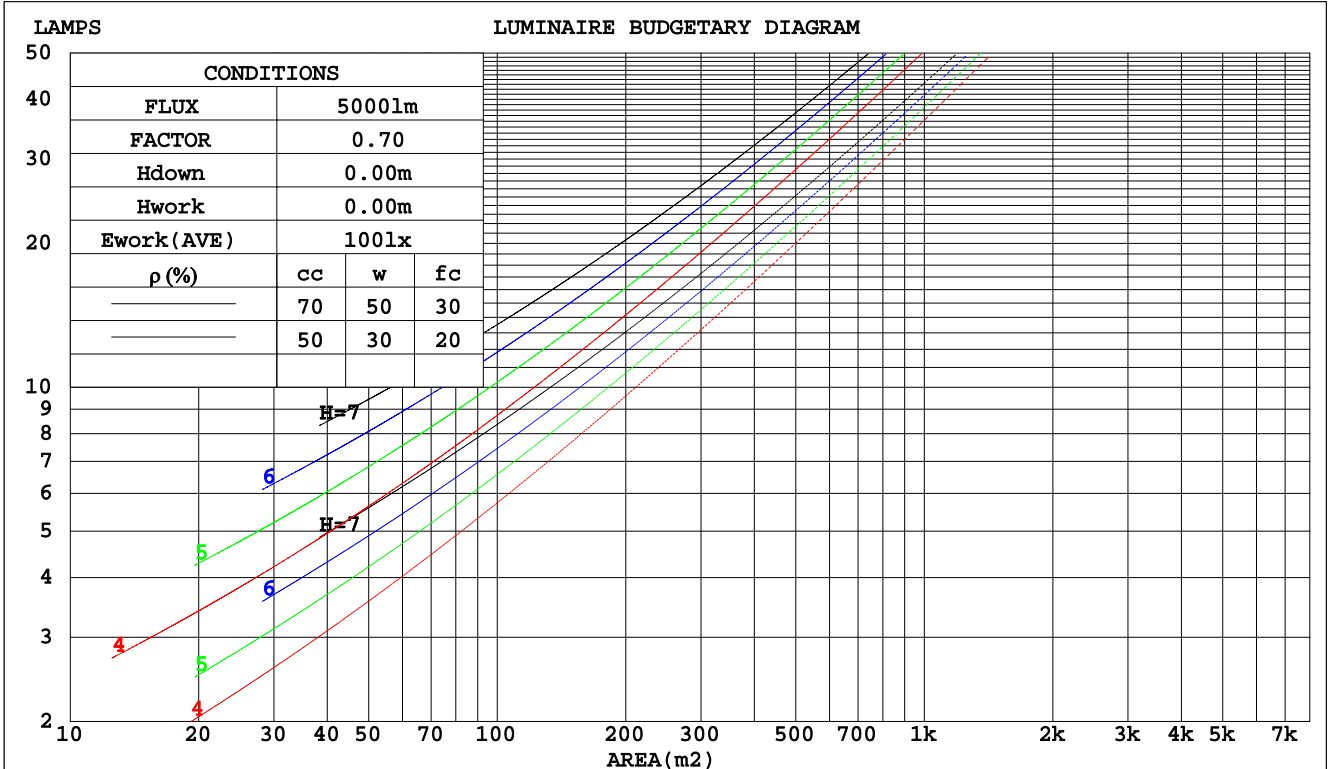
C Range: 0 - 360DEG
 C Interval: 15.0DEG
 Test Speed: HIGH
 Temperature: 25.0DEG
 Operators: Alan Wang
 Test Date: 08 May 2023

γ Range: 0 - 180DEG
 γ Interval: 1.0DEG
 Test System: EVERFINE GO-R5000_V2 SYSTEM V2.00.416
 Humidity: 43.5%
 Test Distance: 2.500m [K=1.0390]
 Remarks:

CU AND LUMINAIRE BUDGETARY ESTIMATE DIAGRAM

Test:U:277.00V I:0.1611A P:37.380W PF:0.8374 Freq:60.00Hz Lamp Flux:3284.9x1 lm		
NAME:	TYPE:LED	WEIGHT:
SPEC.:	DIM.:	SERIAL No.:
MFR.: ASD Lighting corp	SUR.:	Shielding Angle:

pcc	80%			70%			50%			30%			10%			0
	50%	30%	10%	50%	30%	10%	50%	30%	10%	50%	30%	10%	50%	30%	10%	0
pw																
pfc	20%			20%			20%			20%			20%			0
RCR	RCR:Room Cavity Ratio						Coefficients of Utilization(CU)									
0.0	1.07	1.07	1.07	.99	.99	.99	.84	.84	.84	.70	.70	.70	.57	.57	.57	.50
1.0	.86	.80	.75	.79	.74	.69	.65	.61	.58	.53	.50	.47	.42	.39	.37	.32
2.0	.72	.64	.57	.66	.59	.53	.55	.49	.44	.44	.40	.36	.34	.31	.28	.23
3.0	.62	.53	.46	.57	.49	.42	.47	.40	.35	.37	.32	.28	.29	.25	.22	.17
4.0	.54	.45	.37	.50	.41	.34	.41	.34	.29	.33	.27	.23	.25	.21	.18	.14
5.0	.48	.38	.31	.44	.35	.29	.36	.29	.24	.29	.23	.19	.22	.18	.15	.11
6.0	.42	.33	.27	.39	.30	.24	.32	.25	.20	.26	.20	.16	.20	.16	.12	.09
7.0	.38	.29	.23	.35	.27	.21	.29	.22	.18	.23	.18	.14	.18	.14	.11	.08
8.0	.34	.26	.20	.31	.24	.18	.26	.20	.15	.21	.16	.12	.16	.12	.09	.07
9.0	.31	.23	.17	.29	.21	.16	.24	.18	.13	.19	.14	.11	.15	.11	.08	.06
10.0	.28	.21	.15	.26	.19	.14	.22	.16	.12	.18	.13	.10	.14	.10	.07	.05



C Range: 0 - 360DEG
 C Interval: 15.0DEG
 Test Speed: HIGH
 Temperature: 25.0DEG
 Operators: Alan Wang
 Test Date: 08 May 2023

γ Range: 0 - 180DEG
 γ Interval: 1.0DEG
 Test System: EVERFINE GO-R5000_V2 SYSTEM V2.00.416
 Humidity: 43.5%
 Test Distance: 2.500m [K=1.0390]
 Remarks:

WEC AND CCEC

Test:U:277.00V I:0.1611A P:37.380W PF:0.8374 Freq:60.00Hz Lamp Flux:3284.9x1 lm		
NAME:	TYPE:LED	WEIGHT:
SPEC.:	DIM.:	SERIAL No.:
MFR.: ASD Lighting corp	SUR.:	Shielding Angle:

ρcc	80%			70%			50%			30%			10%			0
ρw	50%	30%	10%	50%	30%	10%	50%	30%	10%	50%	30%	10%	50%	30%	10%	0
ρfc	20%			20%			20%			20%			20%			0
RCR	RCR:Room Cavity Ratio						Wall Exitance Coefficients(WEC)									
0.0																
1.0	.423	.240	.076	.400	.228	.073	.359	.206	.066	.320	.185	.059	.285	.165	.053	
2.0	.349	.191	.059	.329	.181	.056	.291	.162	.050	.255	.143	.045	.223	.126	.040	
3.0	.303	.161	.048	.284	.152	.046	.249	.135	.041	.217	.119	.036	.187	.103	.032	
4.0	.268	.139	.041	.251	.132	.039	.219	.116	.035	.190	.102	.031	.162	.088	.027	
5.0	.242	.123	.036	.226	.116	.034	.196	.102	.030	.169	.089	.027	.143	.077	.023	
6.0	.220	.110	.032	.205	.104	.030	.178	.091	.027	.153	.079	.023	.129	.068	.020	
7.0	.202	.100	.028	.188	.094	.027	.163	.082	.024	.140	.072	.021	.117	.061	.018	
8.0	.186	.091	.026	.174	.086	.024	.151	.075	.021	.129	.065	.019	.108	.055	.016	
9.0	.173	.084	.023	.162	.079	.022	.140	.069	.020	.119	.060	.017	.100	.051	.015	
10.0	.161	.077	.021	.151	.073	.020	.130	.064	.018	.111	.055	.016	.093	.047	.013	

ρcc	80%			70%			50%			30%			10%			0
ρw	50%	30%	10%	50%	30%	10%	50%	30%	10%	50%	30%	10%	50%	30%	10%	0
ρfc	20%			20%			20%			20%			20%			0
RCR	RCR:Room Cavity Ratio						Ceiling Cavity Exitance Coefficients(CCEC)									
0.0	.568	.568	.568	.485	.485	.485	.331	.331	.331	.190	.190	.190	.061	.061	.061	
1.0	.568	.536	.506	.486	.460	.435	.333	.316	.301	.192	.183	.175	.061	.059	.057	
2.0	.563	.515	.474	.482	.443	.410	.330	.306	.286	.190	.178	.168	.061	.058	.055	
3.0	.556	.499	.455	.476	.431	.394	.327	.299	.276	.189	.175	.163	.061	.057	.053	
4.0	.548	.488	.442	.470	.422	.384	.324	.294	.270	.187	.172	.160	.060	.056	.053	
5.0	.541	.479	.434	.464	.414	.377	.320	.290	.266	.185	.170	.158	.060	.055	.052	
6.0	.534	.472	.427	.459	.409	.372	.316	.286	.263	.184	.168	.157	.059	.055	.052	
7.0	.527	.466	.423	.453	.404	.369	.313	.283	.261	.182	.167	.155	.059	.055	.051	
8.0	.520	.460	.420	.448	.399	.366	.310	.280	.260	.180	.165	.155	.058	.054	.051	
9.0	.514	.456	.417	.443	.396	.364	.307	.278	.258	.179	.164	.154	.058	.054	.051	
10.0	.508	.452	.415	.438	.393	.362	.304	.276	.257	.177	.163	.153	.057	.054	.051	

C Range: 0 - 360DEG
 C Interval: 15.0DEG
 Test Speed: HIGH
 Temperature: 25.0DEG
 Operators: Alan Wang
 Test Date: 08 May 2023

γ Range: 0 - 180DEG
 γ Interval: 1.0DEG
 Test System: EVERFINE GO-R5000_V2 SYSTEM V2.00.416
 Humidity: 43.5%
 Test Distance: 2.500m [K=1.0390]
 Remarks:

UGR(Unified Glare Rating) Table

Test:U:277.00V I:0.1611A P:37.380W PF:0.8374 Freq:60.00Hz Lamp Flux:3284.9x1 lm										
NAME:					TYPE:LED			WEIGHT:		
SPEC.:					DIM.:			SERIAL No.:		
MFR.: ASD Lighting corp					SUR.:			Shielding Angle:		
ceiling/cavity	0.7	0.7	0.5	0.5	0.3	0.7	0.7	0.5	0.5	0.3
walls	0.5	0.3	0.5	0.3	0.3	0.5	0.3	0.5	0.3	0.3
working plane	0.2	0.2	0.2	0.2	0.2	0.2	0.2	0.2	0.2	0.2
Room dimensions	Viewed crosswise					Viewed endwise				
x = 2H y = 2H	9.1	10.1	9.9	11.0	12.2	12.5	13.6	13.4	14.5	15.6
3H	11.6	12.6	12.4	13.5	14.7	16.9	17.9	17.7	18.8	20.0
4H	13.0	13.9	13.9	14.8	16.0	19.6	20.5	20.5	21.4	22.6
6H	14.4	15.3	15.3	16.3	17.5	22.4	23.3	23.3	24.2	25.4
8H	15.2	16.0	16.1	17.0	18.2	23.8	24.7	24.7	25.6	26.8
12H	15.9	16.8	16.9	17.7	18.9	25.3	26.2	26.3	27.1	28.3
4H 2H	10.9	11.9	11.8	12.8	14.0	13.1	14.1	14.0	15.0	16.2
3H	13.6	14.4	14.5	15.4	16.6	17.7	18.5	18.6	19.5	20.7
4H	15.1	15.9	16.1	16.8	18.1	20.6	21.4	21.5	22.3	23.6
6H	16.6	17.3	17.6	18.3	19.6	23.6	24.3	24.6	25.3	26.6
8H	17.4	18.0	18.4	19.0	20.3	25.2	25.8	26.1	26.8	28.1
12H	18.2	18.8	19.1	19.8	21.1	26.8	27.4	27.8	28.4	29.7
8H 4H	17.1	17.7	18.0	18.7	20.0	21.0	21.6	21.9	22.6	23.9
6H	18.8	19.4	19.8	20.4	21.7	24.3	24.8	25.3	25.8	27.1
8H	19.7	20.2	20.7	21.2	22.5	26.0	26.5	27.0	27.5	28.9
12H	20.6	21.0	21.6	22.0	23.4	28.0	28.4	29.0	29.4	30.8
12H 4H	17.9	18.5	18.9	19.5	20.8	21.0	21.6	22.0	22.6	23.9
6H	19.8	20.3	20.8	21.3	22.7	24.4	24.9	25.4	25.9	27.2
8H	20.9	21.3	21.9	22.3	23.7	26.3	26.7	27.3	27.7	29.1
Variations with the observer position at spacings:										
S = 1.0H	+ 0.1 / - 0.1					+ 0.1 / - 0.1				
1.5H	+ 0.2 / - 0.2					+ 0.2 / - 0.3				
2.0H	+ 0.3 / - 0.4					+ 0.3 / - 0.4				

CIE Pub.117, 3285 lm Total Lamp Luminous Flux Corrected (8log(F/F0) = 4.1)
 Area: 0.2745 m2

C Range: 0 - 360DEG
 C Interval: 15.0DEG
 Test Speed: HIGH
 Temperature: 25.0DEG
 Operators: Alan Wang
 Test Date: 08 May 2023

γ Range: 0 - 180DEG
 γ Interval: 1.0DEG
 Test System: EVERFINE GO-R5000_V2 SYSTEM V2.00.416
 Humidity: 43.5%
 Test Distance: 2.500m [K=1.0390]
 Remarks:

UTILIZATION FACTORS TABLE

Test:U:277.00V I:0.1611A P:37.380W PF:0.8374 Freq:60.00Hz Lamp Flux:3284.9x1 lm		
NAME:	TYPE:LED	WEIGHT:
SPEC.:	DIM.:	SERIAL No.:
MFR.: ASD Lighting corp	SUR.:	Shielding Angle:

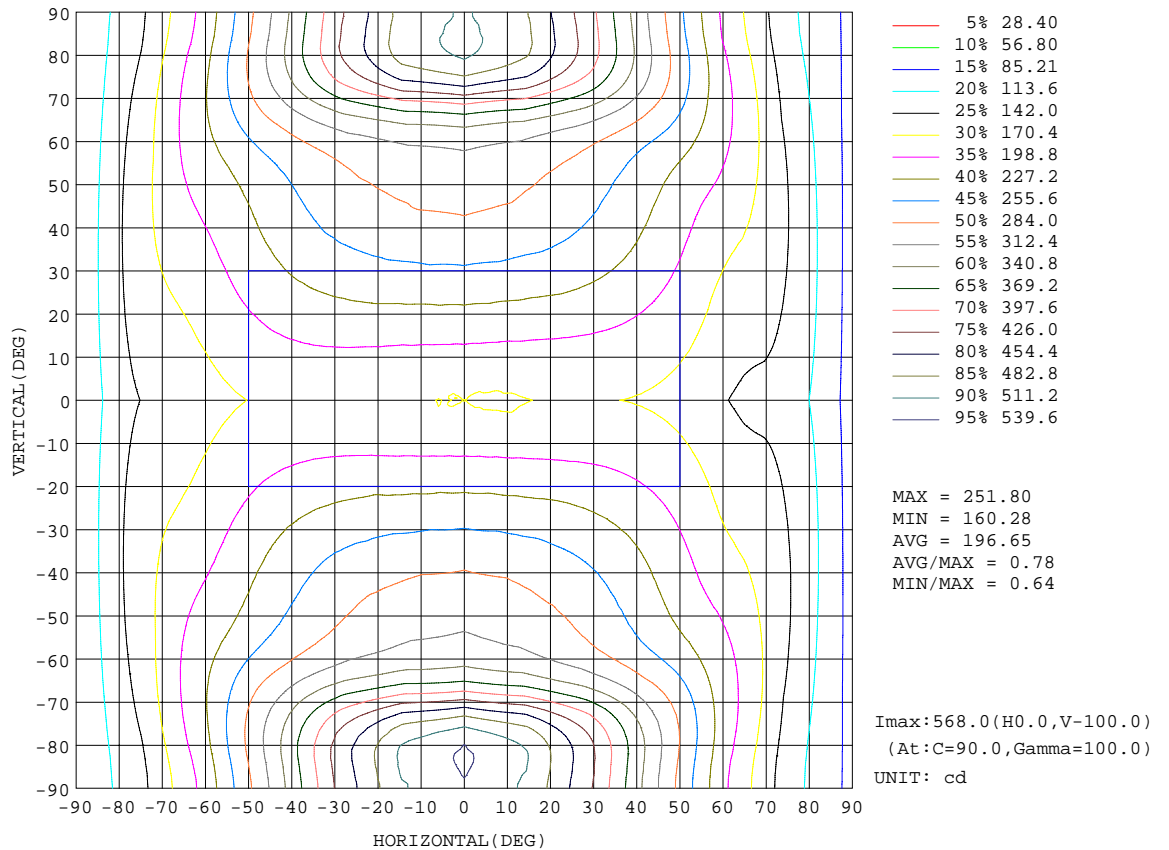
REFLECTANCE										
Ceiling	0.8	0.8	0.8	0.7	0.7	0.7	0.5	0.5	0.5	0
Walls	0.7	0.5	0.3	0.7	0.5	0.3	0.7	0.5	0.3	0
Working plane	0.2	0.2	0.2	0.2	0.2	0.2	0.2	0.2	0.2	0
ROOM INDEX	UTILIZATION FACTORS(PERCENT) k(RI) x RCR = 5									
k = 0.60	36	23	16	34	22	15	30	20	14	7
0.80	44	30	22	41	29	21	36	26	19	9
1.00	51	37	28	48	35	26	42	33	24	12
1.25	58	44	34	54	41	32	46	36	29	15
1.50	63	49	39	59	46	37	50	40	33	17
2.00	71	58	48	66	54	45	56	46	39	21
2.50	76	64	54	70	59	51	59	51	44	24
3.00	80	69	60	74	64	56	62	55	48	26
4.00	85	75	67	79	70	63	66	60	54	30
5.00	89	80	73	82	74	68	69	63	58	32
ROOM INDEX	UF(total)									Direct
According to DIN EN 13032-2 2004			Suspended				SHRNOM = 1.25			

C Range: 0 - 360DEG
 C Interval: 15.0DEG
 Test Speed: HIGH
 Temperature: 25.0DEG
 Operators: Alan Wang
 Test Date: 08 May 2023

γ Range: 0 - 180DEG
 γ Interval: 1.0DEG
 Test System: EVERFINE GO-R5000_V2 SYSTEM V2.00.416
 Humidity: 43.5%
 Test Distance: 2.500m [K=1.0390]
 Remarks:

ISOCANDELA DIAGRAM

Test:U:277.00V I:0.1611A P:37.380W PF:0.8374 Freq:60.00Hz Lamp Flux:3284.9x1 lm		
NAME:	TYPE:LED	WEIGHT:
SPEC.:	DIM.:	SERIAL No.:
MFR.: ASD Lighting corp	SUR.:	Shielding Angle:

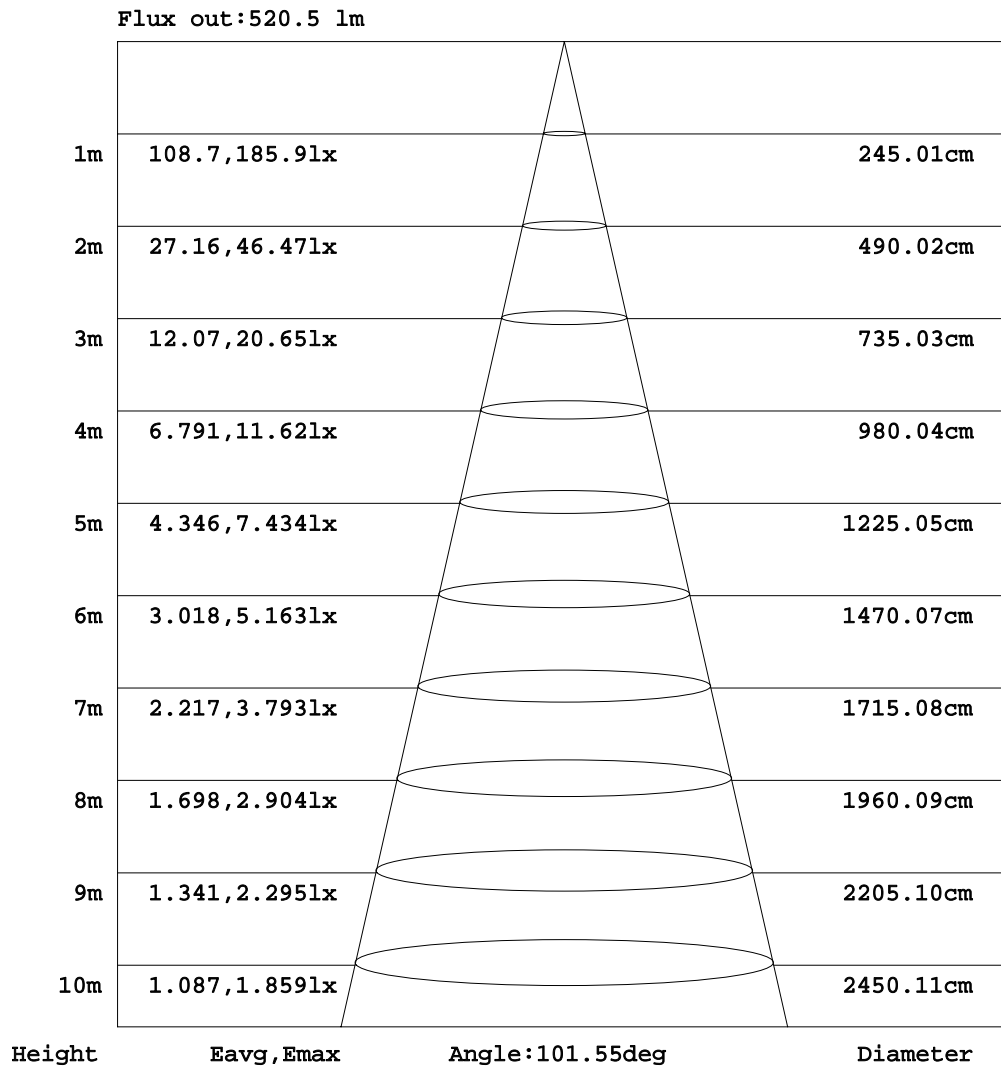


C Range: 0 - 360DEG
 C Interval: 15.0DEG
 Test Speed: HIGH
 Temperature: 25.0DEG
 Operators: Alan Wang
 Test Date: 08 May 2023

γ Range: 0 - 180DEG
 γ Interval: 1.0DEG
 Test System: EVERFINE GO-R5000_V2 SYSTEM V2.00.416
 Humidity: 43.5%
 Test Distance: 2.500m [K=1.0390]
 Remarks:

AAI Figure

Test:U:277.00V I:0.1611A P:37.380W PF:0.8374 Freq:60.00Hz Lamp Flux:3284.9x1 lm		
NAME:	TYPE:LED	WEIGHT:
SPEC.:	DIM.:	SERIAL No.:
MFR.: ASD Lighting corp	SUR.:	Shielding Angle:



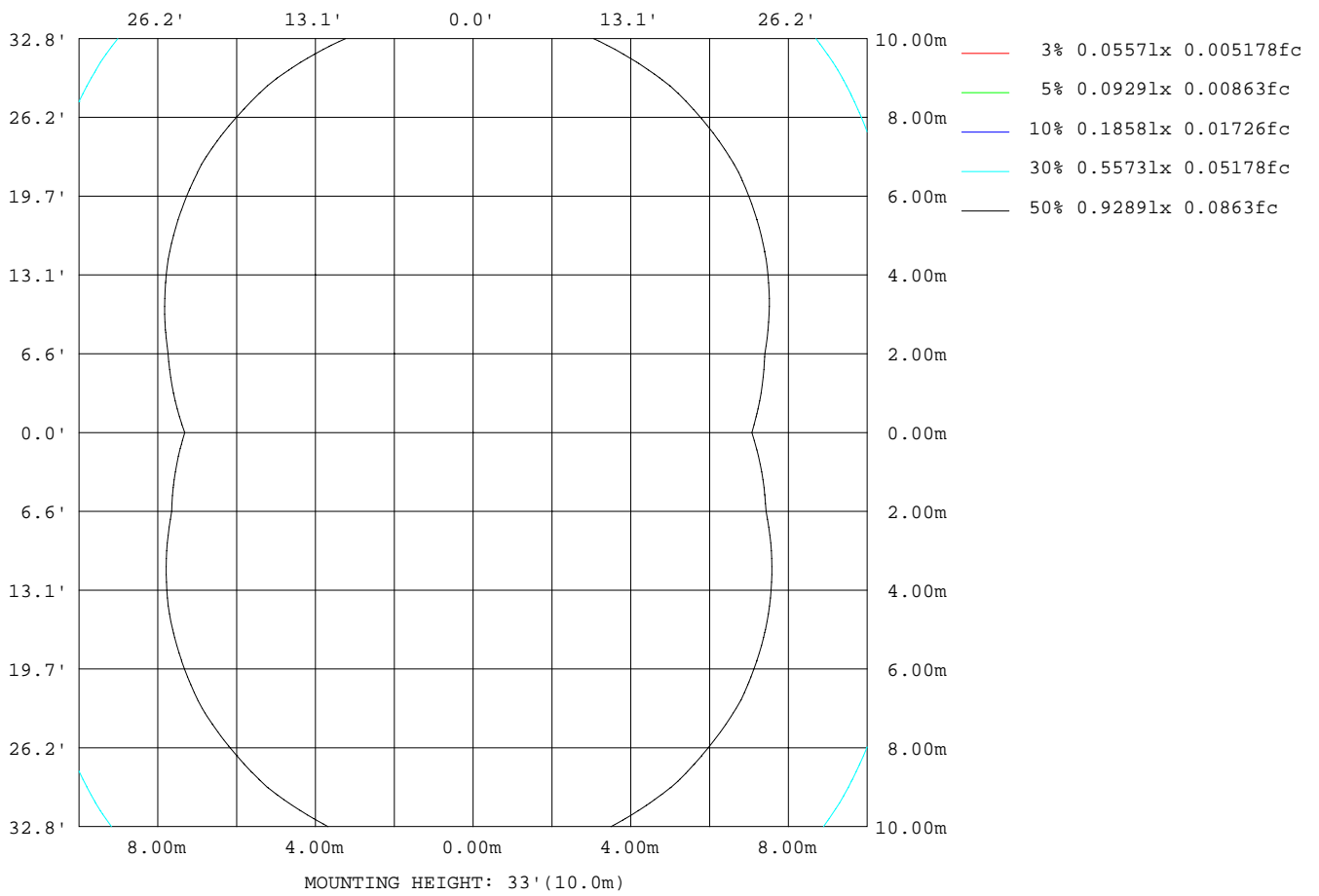
Note:The Curves indicate the illuminated area and the average illumination when the luminaire is at different distance.

C Range: 0 - 360DEG
 C Interval: 15.0DEG
 Test Speed: HIGH
 Temperature: 25.0DEG
 Operators:Alan Wang
 Test Date:08 May 2023

γ Range: 0 - 180DEG
 γ Interval: 1.0DEG
 Test System:EVERFINE GO-R5000_V2 SYSTEM V2.00.416
 Humidity: 43.5%
 Test Distance:2.500m [K=1.0390]
 Remarks:

ISOLUX DIAGRAM

Test:U:277.00V I:0.1611A P:37.380W PF:0.8374 Freq:60.00Hz Lamp Flux:3284.9x1 lm		
NAME:	TYPE:LED	WEIGHT:
SPEC.:	DIM.:	SERIAL No.:
MFR.: ASD Lighting corp	SUR.:	Shielding Angle:



C Range: 0 - 360DEG
 C Interval: 15.0DEG
 Test Speed: HIGH
 Temperature: 25.0DEG
 Operators: Alan Wang
 Test Date: 08 May 2023

γ Range: 0 - 180DEG
 γ Interval: 1.0DEG
 Test System: EVERFINE GO-R5000_V2 SYSTEM V2.00.416
 Humidity: 43.5%
 Test Distance: 2.500m [K=1.0390]
 Remarks:

LED Avg.L Report

Test:U:277.00V I:0.1611A P:37.380W PF:0.8374 Freq:60.00Hz Lamp Flux:3284.9x1 lm		
NAME:	TYPE:LED	WEIGHT:
SPEC.:	DIM.:	SERIAL No.:
MFR.: ASD Lighting corp	SUR.:	Shielding Angle:

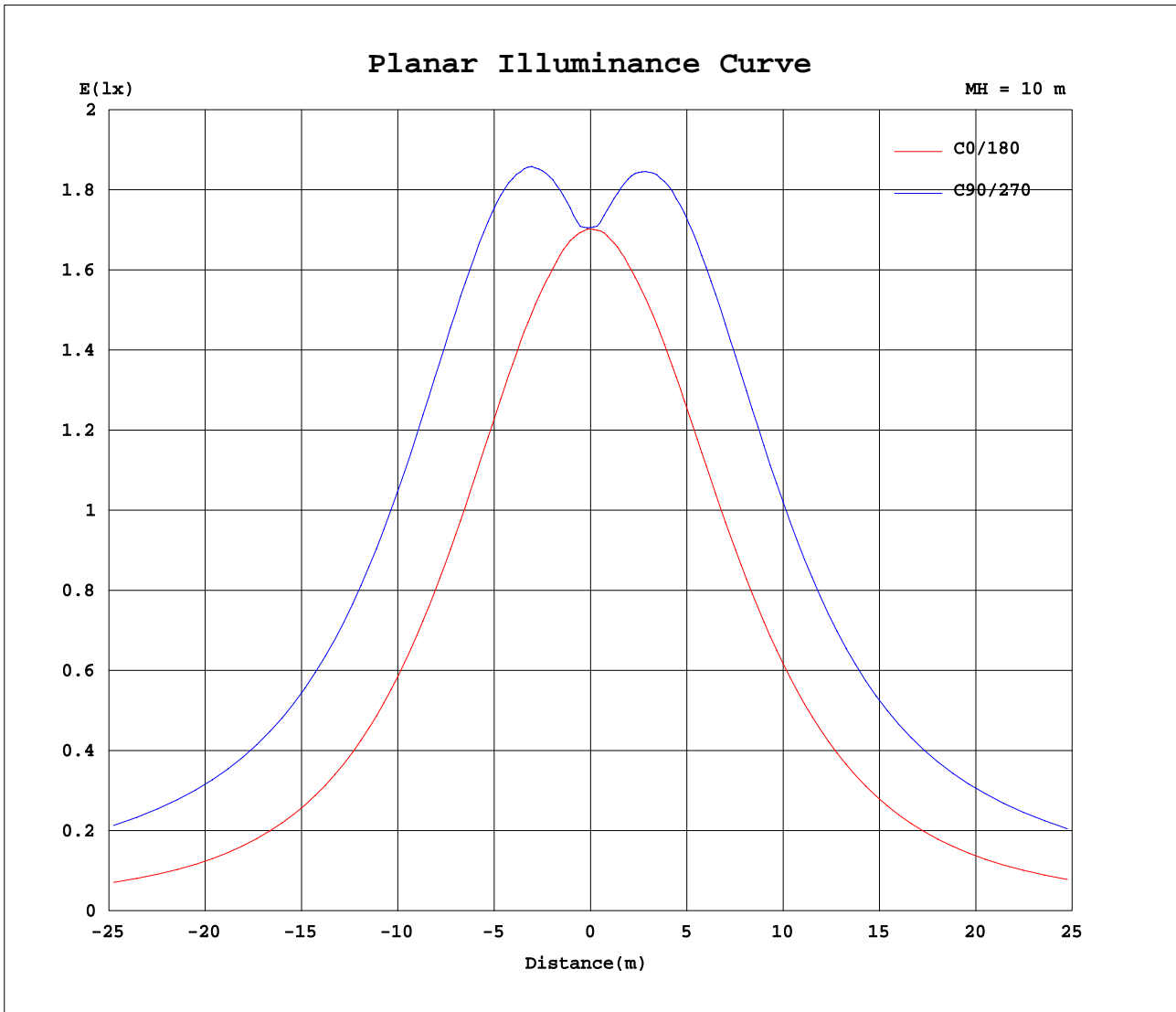
AvgL	cd/m2
L_0~180(65)av	1241
L_0~180(75)av	1899
L_0~180(85)av	4232
L_90~270(65)av	3116
L_90~270(75)av	6935
L_90~270(85)av	22211
L_45(65)av	2275
L_45(75)av	4276
L_45(85)av	13169

Standard: GB/T 29293-2012

C Range: 0 - 360DEG
 C Interval: 15.0DEG
 Test Speed: HIGH
 Temperature: 25.0DEG
 Operators: Alan Wang
 Test Date: 08 May 2023

γ Range: 0 - 180DEG
 γ Interval: 1.0DEG
 Test System: EVERFINE GO-R5000_V2 SYSTEM V2.00.416
 Humidity: 43.5%
 Test Distance: 2.500m [K=1.0390]
 Remarks:

Planar Illuminance Curve



C Range: 0 - 360DEG
 C Interval: 15.0DEG
 Test Speed: HIGH
 Temperature: 25.0DEG
 Operators: Alan Wang
 Test Date: 08 May 2023

γ Range: 0 - 180DEG
 γ Interval: 1.0DEG
 Test System: EVERFINE GO-R5000_V2 SYSTEM V2.00.416
 Humidity: 43.5%
 Test Distance: 2.500m [K=1.0390]
 Remarks:

LUMINOUS DISTRIBUTION INTENSITY DATA

Test:U:277.00V I:0.1611A P:37.380W PF:0.8374 Freq:60.00Hz Lamp Flux:3284.9x1 lm		
NAME:	TYPE:LED	WEIGHT:
SPEC.:	DIM.:	SERIAL No.:
MFR.: ASD Lighting corp	SUR.:	Shielding Angle:

Table--1

UNIT: cd

C(DEG) γ (DEG)	0	15	30	45	60	75	90	105	120	135	150	165	180	195	210	225	240	255	270
0	170	170	170	171	171	171	171	171	171	171	170	170	170	170	170	171	171	171	171
5	170	170	171	172	174	175	176	176	174	173	171	171	170	171	172	174	176	177	177
10	170	170	175	181	185	189	190	189	186	182	175	171	171	172	177	183	187	190	190
15	170	172	181	191	199	204	205	204	199	192	183	174	172	176	184	193	199	204	205
20	171	176	189	202	212	220	222	221	214	204	191	178	173	181	192	204	213	219	220
25	172	180	197	214	227	236	240	237	228	216	200	183	175	185	201	216	226	234	237
30	172	183	204	225	241	252	257	253	242	228	208	187	176	190	209	227	240	249	252
35	171	186	210	234	254	267	272	268	256	239	215	191	177	194	216	237	253	263	266
40	169	187	215	243	264	279	285	281	268	248	222	194	176	196	222	246	263	275	279
45	165	187	218	249	273	289	296	291	278	255	226	195	174	197	226	252	272	284	289
50	160	185	219	252	279	297	306	300	285	261	228	194	171	196	228	257	278	291	296
55	153	180	218	254	284	305	315	309	291	263	228	191	165	194	228	259	283	298	304
60	144	174	215	255	292	319	332	323	300	266	227	186	158	189	226	262	292	312	321
65	137	168	212	260	309	349	368	355	319	273	225	182	151	185	225	268	311	343	355
70	135	168	216	277	348	408	435	414	359	290	228	180	148	183	227	284	347	396	416
75	128	165	222	303	398	473	504	478	405	313	233	178	142	180	233	307	391	458	481
80	113	155	223	319	426	507	540	510	430	326	233	168	129	171	233	321	418	491	515
85	94.1	140	214	319	428	510	543	514	433	323	222	150	108	153	222	318	420	494	520
90	77.3	126	205	313	424	506	537	507	427	314	209	134	87.8	137	210	310	415	491	515
95	89.2	138	217	327	442	526	558	527	444	328	219	144	98.0	147	221	324	434	512	538
100	103	143	220	330	448	535	568	537	449	330	222	149	111	152	224	326	439	519	547
105	110	139	210	313	430	517	550	517	430	316	216	147	119	149	218	314	420	498	525
110	119	136	200	286	386	466	497	468	390	293	210	147	131	149	212	293	382	451	473
115	133	139	194	261	335	395	422	399	342	271	205	151	146	152	207	271	340	392	409
120	148	152	191	246	299	343	361	347	306	254	201	165	159	161	203	255	307	344	356
125	159	162	188	235	278	311	325	315	285	243	198	175	170	169	198	243	285	314	324
130	168	168	184	225	262	289	302	292	268	232	192	180	178	174	193	233	268	292	300
135	174	172	190	214	246	270	280	272	251	221	199	184	183	180	194	220	250	271	278
140	178	174	193	202	229	249	258	252	233	208	201	185	186	183	197	207	232	250	256
145	181	175	193	205	212	229	236	231	216	211	201	184	188	182	191	205	214	229	233
150	183	172	189	203	212	216	218	218	215	208	197	180	189	178	186	203	209	212	213
155	183	171	186	200	208	214	217	216	211	203	194	177	188	175	183	192	205	209	210
160	177	165	184	194	201	206	209	207	203	198	189	169	183	174	176	187	195	202	204
165	152	157	176	189	193	197	198	198	195	186	171	151	161	162	154	167	183	191	195
170	125	136	149	175	187	189	189	188	171	155	133	135	136	137	133	135	151	166	182
175	121	119	128	148	149	157	152	138	130	127	127	131	127	127	130	124	122	125	134
180	141	139	129	127	126	134	69.8	86.9	117	124	136	140	139	139	137	131	126	119	83.1

C Range: 0 - 360DEG
 C Interval: 15.0DEG
 Test Speed: HIGH
 Temperature: 25.0DEG
 Operators: Alan Wang
 Test Date: 08 May 2023

γ Range: 0 - 180DEG
 γ Interval: 1.0DEG
 Test System: EVERFINE GO-R5000_V2 SYSTEM V2.00.416
 Humidity: 43.5%
 Test Distance: 2.500m [K=1.0390]
 Remarks:

LUMINOUS DISTRIBUTION INTENSITY DATA

Test:U:277.00V I:0.1611A P:37.380W PF:0.8374 Freq:60.00Hz Lamp Flux:3284.9x1 lm		
NAME:	TYPE:LED	WEIGHT:
SPEC.:	DIM.:	SERIAL No.:
MFR.: ASD Lighting corp	SUR.:	Shielding Angle:

Table--2

UNIT: cd

C(DEG) γ (DEG)	285	300	315	330	345														
0	171	171	171	170	170														
5	176	175	173	171	170														
10	189	186	181	176	171														
15	203	198	191	182	173														
20	218	211	201	189	177														
25	233	224	211	196	180														
30	247	236	221	202	183														
35	261	249	231	208	185														
40	272	259	238	213	186														
45	281	267	244	215	185														
50	288	272	247	216	183														
55	295	276	248	214	178														
60	308	283	250	211	172														
65	337	300	255	209	167														
70	391	336	270	212	167														
75	450	380	292	217	163														
80	482	405	305	215	152														
85	486	407	301	204	135														
90	482	402	295	193	121														
95	503	420	308	205	132														
100	511	423	309	208	137														
105	489	401	292	200	133														
110	439	363	271	192	130														
115	381	323	252	188	135														
120	336	293	239	185	148														
125	307	273	229	182	158														
130	286	257	219	179	165														
135	266	241	208	186	169														
140	246	224	198	189	170														
145	226	208	200	189	170														
150	211	206	200	187	167														
155	209	205	198	187	168														
160	204	200	195	185	171														
165	195	194	190	183	161														
170	185	185	182	167	144														
175	150	148	141	139	119														
180	83.0	83.5	120	127	132														

C Range: 0 - 360DEG
 C Interval: 15.0DEG
 Test Speed: HIGH
 Temperature: 25.0DEG
 Operators: Alan Wang
 Test Date: 08 May 2023

γ Range: 0 - 180DEG
 γ Interval: 1.0DEG
 Test System: EVERFINE GO-R5000_V2 SYSTEM V2.00.416
 Humidity: 43.5%
 Test Distance: 2.500m [K=1.0390]
 Remarks: