



LED OUTDOOR WALL SCENCE

► **DESIGN** - LED OUTDOOR WALL SCENCE has a modern, multipurpose design and a stylish look with efficient lighting. The clear seeded glass shade with a 140° beam angle filled with air bubbles emits a luxurious glow. It is designed to operate on 120V circuits and provides smooth triac dimming capabilities ranging from 10% to 100%.

► **COLOR SELECTABLE** - You can choose either a 3,000K warm white, 4,000K cool white or 5,000K daylight color temperature.

► Durable waterproof housing resistant to rust and impact can be used outdoors in all weather conditions.

► **APPLICATION** - The fixture is rated for Wet Locations, making it perfect for indoor and outdoor projects such as decks, front doors, porches, patios, corridors, walkways, or any other common areas.

► **ADVANTAGES** - With a lifespan of 50,000 hours, these fixtures are made to last decades under normal operation! ASD provides a 5-year limited warranty along with ETL certification to guarantee top quality products and safety!

<i>Catalog number</i>	
<i>Notes</i>	
<i>Type</i>	



Model	Size	Watts	Voltage	Dimmable	Lumens	CCT	Finish	Dimensions (LxWxH)
ASD-LWS25S-10D10CC-BK	10 inch	10W	120 V	TRIAC	329/368/352 lm	3CCT (3,000/4,000/5,000 K)	Black	5-1/8" x 2-11/16" x 10-1/16"

ORDERING INFORMATION

Model	UPC	Pcs. per carton	Carton size	Carton Weight	GTIN 14
ASD-LWS25S-10D10CC-BK	810050734851	4	14.6" x 12.6" x 8.9"	31 lbs	30810050734852

For most up-to-date spec sheets please refer to asd-lighting.com

ASD LIGHTING CORP

E-mail: orders@asd-lighting.com | Web site: www.asd-lighting.com





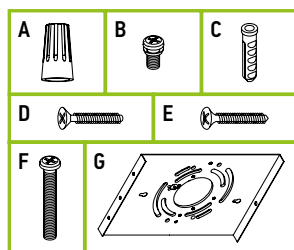
LED OUTDOOR WALL SCENCE

PRODUCT SPECIFICATIONS:

Construction & Materials	
Housing	Aluminum
Lens	Clear seeded glass
Finish	Black
Weight	7.1 lbs (3.2 kg)
Environmental system	
Work environment	Suitable for Wet Locations
Operating temperature	-40°F to 113°F (-40°C to 45°C)
L-70 Life	> 50,000 hrs
Optical system	
Luminous flux	329/368/352 lm
Color temperature	3CCT (3,000/4,000/5,000 K)
CRI	> 80
Electrical system	
Input voltage	120 V
Max input current	0.16 A
Inrush current (Action time)	0.08 A (0.1 S)
Off state power	0W
Power consumption	10W
Power factor	> 0.9
Output voltage	36 V
Max output current	0.25 A
Surge protection DM/CM	1.25 kV / 1.25 kV
Dimming range	
10-100%	
Dimming compatible controls	
Brand	Lutron Leviton
Models	MACL-153MLH-WH DVCL-153PR R02-DW6HD-2RW DSL06
	STCL-153PH-WH P-PKG1W R00-RNL06-0TW
	PD-6WCL-WH-R R68-06674-POT
Regular and voluntary certifications	
5-year limited warranty	
cETLus certified 4001256	

PACKAGE CONTENTS:

Description	Q-ty
LED Outdoor Wall Sconce	1
Wire nut (A)	3
Small screw (B)	2
Wall plug (C)	2
Black screw (D)	4
Wall screw (E)	2
Mounting screw (F)	2
Mounting plate (G)	1
Box	1



INSTALLATION GUIDE

IMPORTANT SAFETY INFORMATION:

Please read all the instructions below before installation.

- ▶ Make sure that the supply voltage corresponds to the rated product voltage.
- ▶ The product must be installed by a qualified electrician in accordance with the National Electrical Code and corresponding local codes.
- ▶ If the product is damaged, do not use it.

⚠ WARNING

RISK OF PERSONAL INJURY – READ and follow all WARNINGS and installation instructions. Keep or give to the owner for future reference.

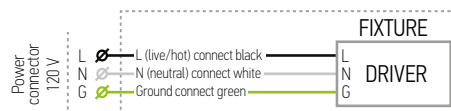
Risk of cuts: Wear gloves to prevent cuts or abrasions when removing from carton, handling, installing, and maintaining this product.

Risk of electric shock: This product must be installed in accordance with the applicable installation code by a person familiar with the construction and operation of the product and the hazards involved.

Risk of Fire: Minimum 194°F supply conductors. Consult a qualified electrician to ensure correct branch circuit conductor.

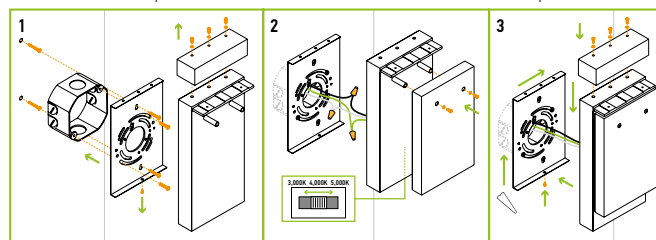
ASD® assumes no responsibility for claims arising out of improper or careless installation or handling of this product.

ELECTRICAL SCHEMATIC DIAGRAM:



INSTALLATION STEPS:

1. Remove the mounting plate and the cover from the fixture. Place the mounting plate against the wall covering the outlet box, mark placement and drill appropriate sized holes, insert wall plugs into the holes. Attach the mounting plate to the outlet box using two mounting screws, tighten it to the wall plugs with two wall screws.
2. Attach the glass on the fixture's base using two small screws. Choose needed color temperature. Connect the wires: Black to Black, White to White, Ground to Ground. Secure the connection with wire nuts.
3. Attach the fixture to the mounting plate and put the cover on the fixture. Twist three black screws on the top and one screw on the bottom of the fixture. For outdoor locations please use silicone (not included) shown in the picture below.



For most up-to-date spec sheets please refer to asd-lighting.com