



LED VANITY LINEAR

LVF21 series

- ▶ **DESIGN** - LED VANITY LINEAR has a sleek, modern design that allows you to have a stylish look with efficient lighting. Durable housing resistant to rust and impact provides many years of service. The acrylic lens with a 130° beam angle grants you even light distribution. It is designed to operate on 120V circuits.
- ▶ **COLOR SELECTABLE** - You can choose either a 3,000K warm white, 4,000K cool white or 5,000K daylight color temperature.
- ▶ **DIMMING** - Smooth triac dimming capabilities ranging from 10% to 100% with modern LED dimmers allow you to control the look and feel of your space.
- ▶ **APPLICATION** - This fixture creates a bright light that is perfect for bathroom spaces or any other common areas. It is also Damp Locations rated. Can be installed vertically and horizontally.
- ▶ **ADVANTAGES** - With a lifespan of 50,000 hours, these fixtures are made to last decades under normal operation! ASD provides a 5-year limited warranty along with ETL and Energy Star certifications to guarantee top quality products and safety!

Catalog number	
Notes	
Type	



Finish: Nickel Bronze Black

Model	Size	Watts	Voltage	Dimmable	Lumens	CCT	Finish	Dimensions (LxWxH)
ASD-LVF21-18D20CC-NK	18 inch	20W	120 V	TRIAC	up to 1,620 lm	3CCT (3,000/4,000/5,000 K)	Nickel	19-1/8" x 5-7/8" x 4"
ASD-LVF21-18D20CC-NK-2PACK	18 inch	20W	120 V	TRIAC	up to 1,620 lm	3CCT (3,000/4,000/5,000 K)	Nickel	19-1/8" x 5-7/8" x 4"
ASD-LVF21-MV-18D20NK	18 inch	20W	120-277 V	TRIAC	up to 2,259 lm	3CCT (3,000/4,000/5,000 K)	Nickel	19-1/8" x 5-7/8" x 4"
ASD-LVF21-18D20CC-BZ	18 inch	20W	120 V	TRIAC	up to 1,620 lm	3CCT (3,000/4,000/5,000 K)	Oil rubbed bronze	19-1/8" x 5-7/8" x 4"
ASD-LVF21-18D20CC-BK	18 inch	20W	120 V	TRIAC	up to 1,620 lm	3CCT (3,000/4,000/5,000 K)	Black	19-1/8" x 5-7/8" x 4"
ASD-LVF21-24D25CC-NK	24 inch	25W	120 V	TRIAC	up to 1,950 lm	3CCT (3,000/4,000/5,000 K)	Nickel	25-9/16" x 5-7/8" x 4"
ASD-LVF21-MV-24D25NK	24 inch	25W	120-277 V	TRIAC	up to 2,598 lm	3CCT (3,000/4,000/5,000 K)	Nickel	25-9/16" x 5-7/8" x 4"
ASD-LVF21-24D25CC-NK-2PACK	24 inch	25W	120 V	TRIAC	up to 1,950 lm	3CCT (3,000/4,000/5,000 K)	Nickel	25-9/16" x 5-7/8" x 4"
ASD-LVF21-24D25CC-BZ	24 inch	25W	120 V	TRIAC	up to 1,950 lm	3CCT (3,000/4,000/5,000 K)	Oil rubbed bronze	25-9/16" x 5-7/8" x 4"
ASD-LVF21-24D25CC-BK	24 inch	25W	120 V	TRIAC	up to 1,950 lm	3CCT (3,000/4,000/5,000 K)	Black	25-9/16" x 5-7/8" x 4"
ASD-LVF21-36D30CC-NK	36 inch	30W	120 V	TRIAC	up to 2,640 lm	3CCT (3,000/4,000/5,000 K)	Nickel	37-3/16" x 5-7/8" x 4"
ASD-LVF21-36D30CC-BK	36 inch	30W	120 V	TRIAC	up to 2,640 lm	3CCT (3,000/4,000/5,000 K)	Black	37-3/16" x 5-7/8" x 4"
ASD-LVF21-48D35CC-NK	48 inch	35W	120 V	TRIAC	up to 3,205 lm	3CCT (3,000/4,000/5,000 K)	Nickel	49" x 5-7/8" x 4"

For detailed luminous flux information please refer to Annex.

ANNEX 1

Model	Watts	3,000 K	4,000 K	5,000 K
ASD-LVF21-18D20CC-NK ASD-LVF21-18D20CC-NK-2PACK ASD-LVF21-18D20CC-BZ ASD-LVF21-18D20CC-BK	20W	1,400 lm	1,620 lm	1,570 lm
ASD-LVF21-MV-18D20NK	20W	2,031 lm	2,259 lm	2,199 lm
ASD-LVF21-24D25CC-NK ASD-LVF21-24D25CC-NK-2PACK ASD-LVF21-24D25CC-BZ ASD-LVF21-24D25CC-BK	25W	1,750 lm	1,950 lm	1,900 lm
ASD-LVF21-MV-24D25NK	25W	2,337 lm	2,598 lm	2,526 lm
ASD-LVF21-36D30CC-NK ASD-LVF21-36D30CC-BK	30W	2,400 lm	2,640 lm	2,535 lm
ASD-LVF21-48D35CC-NK	35W	2,975 lm	3,205 lm	3,125 lm

For most up-to-date spec sheets please refer to asd-lighting.com

ASD LIGHTING CORP

E-mail: orders@asd-lighting.com | Web site: www.asd-lighting.com





LED VANITY LINEAR

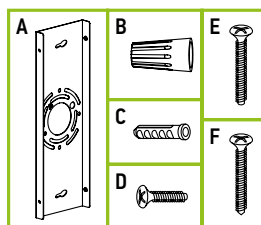
LVF21 series

PRODUCT SPECIFICATIONS:

Construction & Materials		Electrical system		
Housing	Steel	Input voltage	120 V	
Lens	Acrylic		for MV models: 120-277 V	
Finish	Nickel, Oil rubbed bronze, Black			
Weight	ASD-LVF21-18D20CC-NK		0.19 A	
	ASD-LVF21-18D20CC-NK-2PACK	4 lbs (1.8 kg)		
	ASD-LVF21-MV-18D20NK		0.18 A	
	ASD-LVF21-18D20CC-BZ		0.19 A	
	ASD-LVF21-18D20CC-BK	4 lbs (1.8 kg)		
	ASD-LVF21-24D25CC-NK		0.28 A	
	ASD-LVF21-MV-24D25NK	4.6 lbs (2.1 kg)		
	ASD-LVF21-24D25CC-NK-2PACK		0.23 A	
	ASD-LVF21-24D25CC-BZ		0.28 A	
	ASD-LVF21-24D25CC-BK	4.6 lbs (2.1 kg)		
	ASD-LVF21-36D30CC-NK		0.27 A	
	ASD-LVF21-36D30CC-BK	6.3 lbs (2.9 kg)		
ASD-LVF21-48D35CC-NK	8 lbs (3.6 kg)		0.4 A	
Environmental system				
Work environment	Suitable for Damp Locations			
Operating temperature	-4°F to 113°F (-20°C to 45°C)			
L-70 life	> 50,000 hrs			
Optical system				
Color temperature	3CCT switch (3,000/4,000/5,000 K), 3,000 K by default			
CRI	> 80			
Dimming range				
10-100%				
Dimming compatible controls				
Brand	Lutron	Leviton		
Models	MACL-153MLH-WH	R02-DW6HD-2RW		
	STCL-153PH-WH	R00-RNL06-0TW		
	PD-6WCL-WH-R	R68-06674-P0T		
	DVCL-153PR	DSL06		
P-PKG1W				
Regular and voluntary certifications				
5-year limited warranty				
Energy Star listed (except MV models)				
cETLus certified 4001256				
		Inrush current (Action time)	ASD-LVF21-18D20CC-NK ASD-LVF21-18D20CC-NK-2PACK ASD-LVF21-MV-18D20NK ASD-LVF21-18D20CC-BZ ASD-LVF21-18D20CC-BK ASD-LVF21-24D25CC-NK ASD-LVF21-MV-24D25NK ASD-LVF21-24D25CC-NK-2PACK ASD-LVF21-24D25CC-BZ ASD-LVF21-24D25CC-BK ASD-LVF21-36D30CC-NK ASD-LVF21-36D30CC-BK ASD-LVF21-48D35CC-NK ASD-LVF21-18D20CC-NK ASD-LVF21-18D20CC-NK-2PACK ASD-LVF21-MV-18D20NK ASD-LVF21-18D20CC-BZ ASD-LVF21-18D20CC-BK ASD-LVF21-24D25CC-NK ASD-LVF21-MV-24D25NK ASD-LVF21-24D25CC-NK-2PACK ASD-LVF21-24D25CC-BZ ASD-LVF21-24D25CC-BK ASD-LVF21-36D30CC-NK ASD-LVF21-36D30CC-BK ASD-LVF21-48D35CC-NK	0.16 A (0.1 S) 0.17 A (0.1 S) 0.16 A (0.1 S) 0.2 A (0.1 S) 0.21 A (0.1 S) 0.2 A (0.1 S) 0.25 A (0.1 S) 0.3 A (0.1 S)
		Off state power	0W	
		Power consumption	ASD-LVF21-18D20CC-NK ASD-LVF21-18D20CC-NK-2PACK ASD-LVF21-MV-18D20NK ASD-LVF21-18D20CC-BZ ASD-LVF21-18D20CC-BK ASD-LVF21-24D25CC-NK ASD-LVF21-MV-24D25NK ASD-LVF21-24D25CC-NK-2PACK ASD-LVF21-24D25CC-BZ ASD-LVF21-24D25CC-BK ASD-LVF21-36D30CC-NK ASD-LVF21-36D30CC-BK ASD-LVF21-48D35CC-NK	20W 25W 30W 35W
			Power factor	> 0.9
			Output voltage	for MV models: 18-40 V
			Max output current	for ASD-LVF21-MV-18D20NK model: 0.52 A for ASD-LVF21-MV-24D25NK model: 0.6 A
			Surge protection DM/CM	1.25 kV / 1.25 kV

PACKAGE CONTENTS:

Description	Q-ty
LED Vanity Linear	1 (2 for 2 pack)
Mounting plate (A)	1
Wire nut (B)	3
Anchor (C)	2
Fixture screw (D)	4
Mounting screw (E)	2
Self-tapping screw (F)	2
Box	1



For most up-to-date spec sheets please refer to asd-lighting.com



LED VANITY LINEAR

LVF21 series

INSTALLATION GUIDE

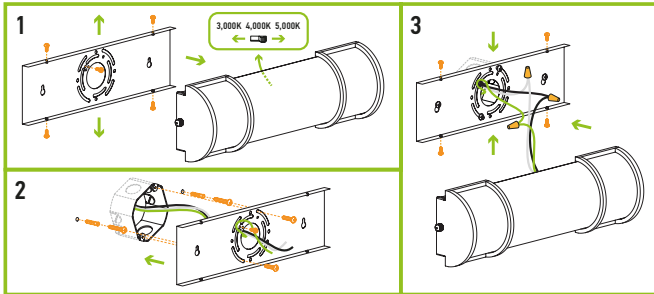
IMPORTANT SAFETY INFORMATION:

Please read all the instructions below before installation.

- ▶ Make sure that the supply voltage corresponds to the rated product voltage.
- ▶ The product must be installed by a qualified electrician in accordance with the National Electrical Code and corresponding local codes.
- ▶ If the product is damaged, do not use it.

INSTALLATION STEPS:

1. Detach the fixture body from the back plate. Choose needed color temperature by adjusting the switch position on the back of the fixture.
2. Place the back plate against the wall covering the outlet box, mark placement of the mounting keyhole slots and drill appropriate sized holes for wall anchors. Attach the back plate to the wall with two outlet box screws and two anchor screws.
3. Connect the wires: Black to Black, White to White, Green to Green. Secure the connection with wire nuts. Attach the fixture body to the back plate using four small screws.



⚠ WARNING

RISK OF PERSONAL INJURY – READ and follow all WARNINGS and installation instructions. Keep or give to the owner for future reference.

Risk of cuts: Wear gloves to prevent cuts or abrasions when removing from carton, handling, installing, and maintaining this product.

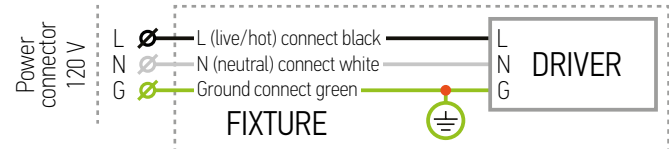
Risk of electric shock: This product must be installed in accordance with the applicable installation code by a person familiar with the construction and operation of the product and the hazards involved.

Risk of Fire: Minimum 194°F supply conductors. Consult a qualified electrician to ensure correct branch circuit conductor.

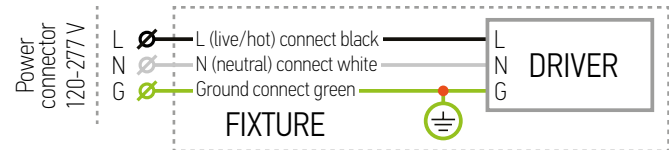
ASD® assumes no responsibility for claims arising out of improper or careless installation or handling of this product.

ELECTRICAL SCHEMATIC DIAGRAM:

LVF21



LVF21-MV



ORDERING INFORMATION

Model	UPC	Pcs. (pack) per carton	Carton size	Carton weight	GTIN 14
ASD-LVF21-18D20CC-NK	819201028214	4	20.5" x 16.3" x 12.6"	23 lbs	30819201028215
ASD-LVF21-18D20CC-NK-2PACK	810050734295	4 (2)	20.5" x 15.4" x 12.6"	19.8 lbs	10810050734292
ASD-LVF21-MV-18D20NK	810128113939	4	20.5" x 16.3" x 12.6"	23 lbs	10810128113936
ASD-LVF21-18D20CC-BZ	819201028221	4	20.5" x 16.3" x 12.6"	23 lbs	30819201028222
ASD-LVF21-18D20CC-BK	810128112109	4	20.5" x 16.3" x 12.6"	23 lbs	10810128112106
ASD-LVF21-24D25CC-NK	819201028238	4	27.2" x 16.3" x 12.6"	24.2 lbs	30819201028239
ASD-LVF21-MV-24D25NK	810128113946	4	27.2" x 16.3" x 12.6"	24.2 lbs	10810128113943
ASD-LVF21-24D25CC-NK-2PACK	810050733663	4 (2)	27.2" x 8.5" x 12.6"	12.3 lbs	-
ASD-LVF21-24D25CC-BZ	819201028252	4	27.2" x 16.3" x 12.6"	24.2 lbs	30819201028253
ASD-LVF21-24D25CC-BK	810128112116	4	27.2" x 16.3" x 12.6"	24.2 lbs	10810128112113
ASD-LVF21-36D30CC-NK	810050731898	2	38.8" x 8.5" x 12.6"	16.4 lbs	30810050731899
ASD-LVF21-36D30CC-BK	810128112123	2	38.8" x 8.5" x 12.6"	16.4 lbs	20810128112127
ASD-LVF21-48D35CC-NK	810050732833	2	50.6" x 8.5" x 12.6"	20.7 lbs	10810050732830

For most up-to-date spec sheets please refer to asd-lighting.com

ASD LIGHTING CORP

E-mail: orders@asd-lighting.com | Web site: www.asd-lighting.com

