



# LED AREA LIGHT WITH Q-BASE AND PHOTOCELL

## PRO series

► **DESIGN** - LED AREA LIGHT WITH Q-BASE AND PHOTOCELL is highly efficient with a 170lm/W output. With 10kV surge protection and a 0-10V dimmable driver. The built-in motion sensor base allows you to install the microwave or PIR motion sensor. Integrated photocell switches the fixture on at night time. The photocell can be disabled with built-in switch.

► **VARIETY** - Fixture is designed to operate on 120-277V or 200-480V circuits (depending on model) and is available in White, Black, Silver or Bronze finishes.

► **PHOTOCELL** - The built-in Dusk to Dawn Photocell will automatically activate/deactivate the fixture depending on the time of day. The photocell can be disabled with on-off switch.

► **COLOR SELECTABLE** - You can choose between 3,000 K warm white, 4,000 K cool white, and 5,000 K daylight white color temperatures.

► **INSTALLATION** - The fixture can be mounted to a junction box or directly to a wall. Perfect commercial or industrial solution for outdoor security lighting, wall perimeter lighting, garages, large backyards, warehouses, hotels, and many other applications. It is also Wet Locations rated.

► **ADVANTAGES** - With calculated lifespan up to 145 000 hours, these fixtures are made to last decades under normal operation! ASD provides a 5-year limited warranty along with UL and DLC Premium certifications to guarantee top quality products and safety!



| Model                                   | Power                                       | Sensor base | Voltage  | Dimming | Lumens   | CCT                       | Finish | Dimensions                    | Option    | Feature     | Certification            |
|---|---|-------------|----------|---------|----------|---------------------------|--------|-------------------------------|-----------|-------------|--------------------------|
| <b>LSB5B-PRO 170lm/W</b>                |   |             |          |         |          |                           |        |                               |           |             |                          |
| ASD-LSB5B-PRO-150WH                     | 100/120/150W                                | 3-pin       | 120-277V | 0-10V   | 25,480lm | 3CCT (3,000/4,000/5,000K) | White  | 12-5/16' x 11-5/16' x 2-7/16' | Photocell | Cord 3.9 ft | UL(E473804), DLC Premium |
| ASD-LSB5B-PRO-150SL                     | 100/120/150W                                | 3-pin       | 120-277V | 0-10V   | 25,480lm | 3CCT (3,000/4,000/5,000K) | Silver | 12-5/16' x 11-5/16' x 2-7/16' | Photocell | Cord 3.9 ft | UL(E473804), DLC Premium |
| ASD-LSB5B-PRO-150BR                     | 100/120/150W                                | 3-pin       | 120-277V | 0-10V   | 25,480lm | 3CCT (3,000/4,000/5,000K) | Bronze | 12-5/16' x 11-5/16' x 2-7/16' | Photocell | Cord 3.9 ft | UL(E473804), DLC Premium |
| ASD-LSB5B-PRO-150BK                     | 100/120/150W                                | 3-pin       | 120-277V | 0-10V   | 25,480lm | 3CCT (3,000/4,000/5,000K) | Black  | 12-5/16' x 11-5/16' x 2-7/16' | Photocell | Cord 3.9 ft | UL(E473804), DLC Premium |
| ASD-LSB5B-PRO-200BR                     | 100/150/200W                                | 3-pin       | 120-277V | 0-10V   | 33,541lm | 3CCT (3,000/4,000/5,000K) | Bronze | 12-5/16' x 11-5/16' x 2-7/16' | Photocell | Cord 3.9 ft | UL(E473804), DLC Premium |
| ASD-LSB5B-PRO-240BR                     | 150/200/240W                                | 3-pin       | 120-277V | 0-10V   | 40,208lm | 3CCT (3,000/4,000/5,000K) | Bronze | 16-9/16' x 12-3/16' x 2-1/2'  | Photocell | Cord 3.9 ft | UL(E473804), DLC Premium |
| ASD-LSB5B-PRO-300WH                     | 200/240/300W                                | 3-pin       | 120-277V | 0-10V   | 52,312lm | 3CCT (3,000/4,000/5,000K) | White  | 16-9/16' x 12-3/16' x 2-1/2'  | Photocell | Cord 3.9 ft | UL(E473804), DLC Premium |
| ASD-LSB5B-PRO-300SL                     | 200/240/300W                                | 3-pin       | 120-277V | 0-10V   | 52,312lm | 3CCT (3,000/4,000/5,000K) | Silver | 16-9/16' x 12-3/16' x 2-1/2'  | Photocell | Cord 3.9 ft | UL(E473804), DLC Premium |
| ASD-LSB5B-PRO-300BR                     | 200/240/300W                                | 3-pin       | 120-277V | 0-10V   | 52,312lm | 3CCT (3,000/4,000/5,000K) | Bronze | 16-9/16' x 12-3/16' x 2-1/2'  | Photocell | Cord 3.9 ft | UL(E473804), DLC Premium |
| ASD-LSB5B-PRO-300BK                     | 200/240/300W                                | 3-pin       | 120-277V | 0-10V   | 52,312lm | 3CCT (3,000/4,000/5,000K) | Black  | 16-9/16' x 12-3/16' x 2-1/2'  | Photocell | Cord 3.9 ft | UL(E473804), DLC Premium |
| ASD-LSB5B-PRO-500BR                     | 300/400/500W                                | 3-pin       | 120-277V | 0-10V   | 84,993lm | 3CCT (3,000/4,000/5,000K) | Bronze | 29-7/16' x 12-3/16' x 2-3/4'  | Photocell | Cord 3.9 ft | UL(E473804), DLC Premium |
| <b>LSB5BHV-PRO HIGH VOLTAGE 170lm/W</b> |   |             |          |         |          |                           |        |                               |           |             |                          |
| ASD-LSB5BHV-PRO-150BR                   | 100/120/150W                                | 3-pin       | 200-480V | 0-10V   | 25,063lm | 3CCT (3,000/4,000/5,000K) | Bronze | 12-5/16' x 11-5/16' x 2-7/16' | Photocell | Cord 3.9 ft | UL(E473804), DLC Premium |
| ASD-LSB5BHV-PRO-200BR                   | 100/150/200W                                | 3-pin       | 200-480V | 0-10V   | 35,081lm | 3CCT (3,000/4,000/5,000K) | Bronze | 12-5/16' x 11-5/16' x 2-7/16' | Photocell | Cord 3.9 ft | UL(E473804), DLC Premium |
| ASD-LSB5BHV-PRO-240BR                   | 150/200/240W                                | 3-pin       | 200-480V | 0-10V   | 41,003lm | 3CCT (3,000/4,000/5,000K) | Bronze | 16-9/16' x 12-3/16' x 2-1/2'  | Photocell | Cord 3.9 ft | UL(E473804), DLC Premium |
| ASD-LSB5BHV-PRO-300SL                   | 200/240/300W                                | 3-pin       | 200-480V | 0-10V   | 52,156lm | 3CCT (3,000/4,000/5,000K) | Silver | 16-9/16' x 12-3/16' x 2-1/2'  | Photocell | Cord 3.9 ft | UL(E473804), DLC Premium |
| ASD-LSB5BHV-PRO-300BR                   | 200/240/300W                                | 3-pin       | 200-480V | 0-10V   | 52,156lm | 3CCT (3,000/4,000/5,000K) | Bronze | 16-9/16' x 12-3/16' x 2-1/2'  | Photocell | Cord 3.9 ft | UL(E473804), DLC Premium |
| ASD-LSB5BHV-PRO-500BR                   | 300/400/500W                                | 3-pin       | 200-480V | 0-10V   | 86,367lm | 3CCT (3,000/4,000/5,000K) | Bronze | 29-7/16' x 12-3/16' x 2-3/4'  | Photocell | Cord 3.9 ft | UL(E473804), DLC Premium |
| <b>SENSORS AND REMOTE</b>               |   |             |          |         |          |                           |        |                               |           |             |                          |
| ASD-09MW-WH                             | Microwave motion sensor 3pin white          |             |          |         |          |                           |        | 2-1/8' x 2-1/8' x 1-5/16'     | -         | -           | -                        |
| ASD-09MW-BK                             | Microwave motion sensor 3pin black          |             |          |         |          |                           |        | 2-1/8' x 2-1/8' x 1-5/16'     | -         | -           | -                        |
| ASD-09IR-WH                             | Infrared motion sensor 3pin 39 ft white     |             |          |         |          |                           |        | 2-1/8' x 2-1/8' x 1-11/16'    | -         | -           | -                        |
| ASD-09IR-BK                             | Infrared motion sensor 3pin 39 ft black     |             |          |         |          |                           |        | 2-1/8' x 2-1/8' x 1-11/16'    | -         | -           | -                        |
| ASD-09IR50-WH                           | Infrared motion sensor 3pin 50 ft white     |             |          |         |          |                           |        | 2-1/8' x 2-1/8' x 1-11/16'    | -         | -           | -                        |
| ASD-09MW-NLS-WH                         | Microwave motion sensor NLS 3pin white      |             |          |         |          |                           |        | 2-1/8' x 2-1/8' x 1-3/8'      | -         | -           | -                        |
| ASD-09IR-NLS-WH                         | Infrared motion sensor NLS 3pin 39 ft white |             |          |         |          |                           |        | 2-1/8' x 2-1/8' x 1-11/16'    | -         | -           | -                        |
| ASD-06RC                                | Remote control for motion sensor            |             |          |         |          |                           |        | 5-11/16' x 1-3/4' x 13/16'    | -         | -           | -                        |

For detailed luminous flux information please refer to Annex 1, page 10.

For most up-to-date spec sheets please refer to [asd-lighting.com](http://asd-lighting.com)









# LED AREA LIGHT WITH Q-BASE AND PHOTOCELL

## PRO series

### TECHNICAL PARAMETERS:

| Model                                   | Max input current | Inrush current | Work environment | Operating temperature         | Power factor | Surge protection | Housing  | Lens | CRI |
|---|-------------------|----------------|------------------|-------------------------------|--------------|------------------|----------|------|-----|
| <b>LSB5B-PRO 170lm/W</b>                |                   |                |                  |                               |              |                  |          |      |     |
| ASD-LSB5B-PRO-150WH                     | 1,7A              | 60A            | Wet location     | -40°F to 122°F(-40°C to 50°C) | >0,9         | 6kV              | Aluminum | PC   | >80 |
| ASD-LSB5B-PRO-150SL                     | 1,7A              | 60A            | Wet location     | -40°F to 122°F(-40°C to 50°C) | >0,9         | 6kV              | Aluminum | PC   | >80 |
| ASD-LSB5B-PRO-150BR                     | 1,7A              | 60A            | Wet location     | -40°F to 122°F(-40°C to 50°C) | >0,9         | 6kV              | Aluminum | PC   | >70 |
| ASD-LSB5B-PRO-150BK                     | 1,7A              | 60A            | Wet location     | -40°F to 122°F(-40°C to 50°C) | >0,9         | 6kV              | Aluminum | PC   | >70 |
| ASD-LSB5B-PRO-200BR                     | 2,2A              | 60A            | Wet location     | -40°F to 122°F(-40°C to 50°C) | >0,9         | 6kV              | Aluminum | PC   | >70 |
| ASD-LSB5B-PRO-240BR                     | 2,7A              | 60A            | Wet location     | -40°F to 122°F(-40°C to 50°C) | >0,9         | 6kV              | Aluminum | PC   | >70 |
| ASD-LSB5B-PRO-300WH                     | 3,4A              | 80A            | Wet location     | -40°F to 122°F(-40°C to 50°C) | >0,9         | 6kV              | Aluminum | PC   | >70 |
| ASD-LSB5B-PRO-300SL                     | 3,4A              | 80A            | Wet location     | -40°F to 122°F(-40°C to 50°C) | >0,9         | 6kV              | Aluminum | PC   | >70 |
| ASD-LSB5B-PRO-300BR                     | 3,4A              | 80A            | Wet location     | -40°F to 122°F(-40°C to 50°C) | >0,9         | 6kV              | Aluminum | PC   | >70 |
| ASD-LSB5B-PRO-300BK                     | 3,4A              | 80A            | Wet location     | -40°F to 122°F(-40°C to 50°C) | >0,9         | 6kV              | Aluminum | PC   | >70 |
| ASD-LSB5B-PRO-500BR                     | 5,6A              | 60A            | Wet location     | -40°F to 122°F(-40°C to 50°C) | >0,9         | 6kV              | Aluminum | PC   | >70 |
| <b>LSB5BHV-PRO HIGH VOLTAGE 170lm/W</b> |                   |                |                  |                               |              |                  |          |      |     |
| ASD-LSB5BHV-PRO-150BR                   | 0,9A              | 78A            | Wet location     | -40°F to 122°F(-40°C to 50°C) | >0,9         | 10kV             | Aluminum | PC   | >70 |
| ASD-LSB5BHV-PRO-200BR                   | 1,1A              | 130A           | Wet location     | -40°F to 122°F(-40°C to 50°C) | >0,9         | 10kV             | Aluminum | PC   | >70 |
| ASD-LSB5BHV-PRO-240BR                   | 1,4A              | 58A            | Wet location     | -40°F to 122°F(-40°C to 50°C) | >0,9         | 10kV             | Aluminum | PC   | >70 |
| ASD-LSB5BHV-PRO-300SL                   | 1,7A              | 96A            | Wet location     | -40°F to 122°F(-40°C to 50°C) | >0,9         | 10kV             | Aluminum | PC   | >70 |
| ASD-LSB5BHV-PRO-300BR                   | 1,7A              | 96A            | Wet location     | -40°F to 122°F(-40°C to 50°C) | >0,9         | 10kV             | Aluminum | PC   | >70 |
| ASD-LSB5BHV-PRO-500BR                   | 2,8A              | 130A           | Wet location     | -40°F to 122°F(-40°C to 50°C) | >0,9         | 10kV             | Aluminum | PC   | >70 |

### EFFECTIVE PROJECTED AREA:

| Model     | Fixture quantity   |   |  |  |   |  |
|-----------|--|---|--|--|---|--|
| LSB5B-PRO |  Single |  Double 180° |  Double 90° |  Triple 90° |  Triple 120° |  Quad 90° |
| 150-200W  | 1.16 ft <sup>2</sup>   | 2.32 ft <sup>2</sup>  | 2.32 ft <sup>2</sup>   | 3.48 ft <sup>2</sup>   | 3.48 ft <sup>2</sup>  | 4.64 ft <sup>2</sup>   |
| 240-300W  | 1.686 ft <sup>2</sup>  | 3.372 ft <sup>2</sup>   | 3.372 ft <sup>2</sup>  | 5.058 ft <sup>2</sup>  | 5.058 ft <sup>2</sup>   | 6.744 ft <sup>2</sup>  |
| 500W      | 2.98 ft <sup>2</sup>   | 5.96 ft <sup>2</sup>  | 5.96 ft <sup>2</sup>   | 8.94 ft <sup>2</sup>   | 8.94 ft <sup>2</sup>  | 11.92 ft <sup>2</sup>  |

### DIMMING COMPATIBLE CONTROLS:

| Brand  | Lutron    | Leviton   | Eaton |
|--------|-----------|-----------|-------|
| Models | DVCL-153P | IP710-DLZ | SF10P |
|        | NTSTV-DV  | DDMX1     |       |
|        | NTFTV     | DDL06     |       |

### PACKAGE CONTENTS:

| Description                              | Quantity |
|--|----------|
| LED Area Light with Q-base and photocell | 1        |
| Box                                      | 1        |

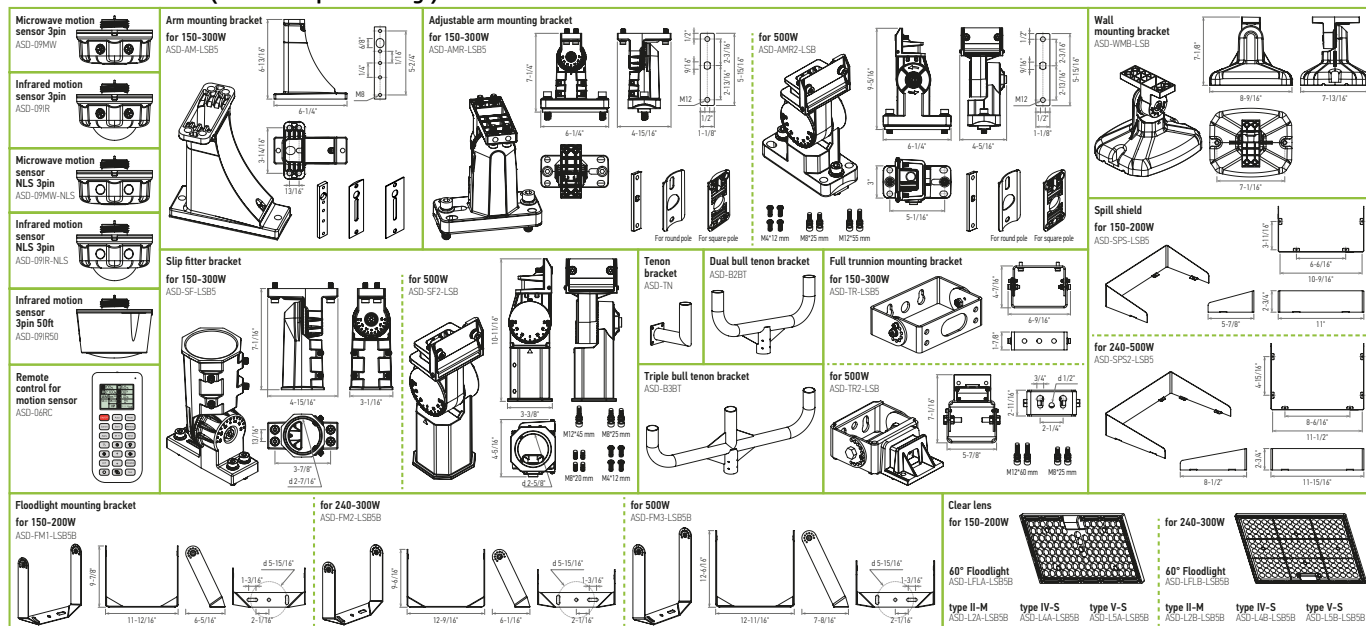
For most up-to-date spec sheets please refer to [asd-lighting.com](http://asd-lighting.com)



# LED AREA LIGHT WITH Q-BASE AND PHOTOCELL

PRO series

## ACCESSORIES (sold separately):



**Microwave motion sensor 3pin**  
ASD-09MW

**Infrared motion sensor 3pin**  
ASD-09IR

**Microwave motion sensor NLS 3pin**  
ASD-09MW-NLS

**Infrared motion sensor NLS 3pin**  
ASD-09IR-NLS

**Infrared motion sensor 3pin 50ft**  
ASD-09IR50

**Remote control for motion sensor**  
ASD-06RC

**Arm mounting bracket for 150-300W**  
ASD-AM-LSB5

**Adjustable arm mounting bracket for 150-300W**  
ASD-AMR-LSB5

**Adjustable arm mounting bracket for 500W**  
ASD-SF2-LSB

**Slip fitter bracket for 150-300W**  
ASD-SF-LSB5

**Slip fitter bracket for 500W**  
ASD-SF2-LSB

**Tenon bracket**  
ASD-TN

**Dual bull tenon bracket**  
ASD-B2BT

**Triple bull tenon bracket**  
ASD-B3BT

**Full trunion mounting bracket for 150-300W**  
ASD-TR2-LSB5

**Full trunion mounting bracket for 500W**  
ASD-TR2-LSB

**Wall mounting bracket**  
ASD-WMB-LSB

**Spill shield for 150-200W**  
ASD-SPS-LSB5

**Spill shield for 240-500W**  
ASD-SPS2-LSB5

**Floodlight mounting bracket for 150-200W**  
ASD-FM1-LSB5B

**Floodlight mounting bracket for 240-300W**  
ASD-FM2-LSB5B

**Floodlight mounting bracket for 500W**  
ASD-FM3-LSB5B

**Clear lens for 150-200W**  
ASD-LFA-LSB5B

**60° Floodlight**  
ASD-LFLB-LSB5B

**60° Floodlight**  
ASD-LFLB2-LSB5B

## ACCESSORY COMPATIBILITY LIST:

| Accessories              | Models | Accessories                              |   |  |   |                                     |  |  |   |   |                         |                                     |                                       |  |   |   |   |   |                                      |   |  |   |   |   |  |
|--------------------------|--------|--|---|--|---|-------------------------------------|--|--|---|---|-------------------------|-------------------------------------|---------------------------------------|--|---|---|---|---|--------------------------------------|---|--|---|---|---|--|
|                          |        | Microwave motion sensor 3pin<br>ASD-09MW | Infrared motion sensor 3pin<br>ASD-09IR, ASD-09IR50 | Microwave motion sensor smart 3pin<br>ASD-09MW-NLS | Infrared motion sensor smart 3pin<br>ASD-09IR-NLS | Arm mounting bracket<br>ASD-AM-LSB5 | Adjustable arm mounting bracket for 150-300W<br>ASD-AMR-LSB5 | Adjustable arm mounting bracket for 500W<br>ASD-AMR2-LSB | Slip fitter bracket for 150-300W<br>ASD-SF-LSB5 | Slip fitter bracket for 500W<br>ASD-SF2-LSB | Tenon bracket<br>ASD-TN | Dual bull tenon bracket<br>ASD-B2BT | Triple bull tenon bracket<br>ASD-B3BT | Full trunion mounting bracket for 150-300W<br>ASD-TR2-LSB5 | Full trunion mounting bracket for 500W<br>ASD-TR2-LSB | Floodlight mounting bracket for 150-200W<br>ASD-FM1-LSB5B | Floodlight mounting bracket for 240-300W<br>ASD-FM2-LSB5B | Floodlight mounting bracket for 500W<br>ASD-FM3-LSB5B | Wall mounting bracket<br>ASD-WMB-LSB | Spill shield for 150-200W<br>ASD-SPS-LSB5 | Spill shield for 240-500W<br>ASD-SPS2-LSB5 | Clear lens for 150-200W<br>ASD-LFA-LSB5B; ASD-L5A-L5B5B | 60° Floodlight Clear lens for 150-200W<br>ASD-LFA-LSB5B | Clear lens for 240-500W<br>ASD-LZB-LSB5B; ASD-L4B-L5B5B | 60° Floodlight Clear lens for 240-500W<br>ASD-LFLB-LSB5B |
| ASD-LSB5B/<br>ASD-LSB5BH | 150W   | •  | •   | •  | •   | •                                   | •  | •  | •   | •   | •                       | •                                   | •                                     | •  | •   | •   | •   | •   | •                                    | •   | •  | •   | •   | •   | •  |
|                          | 200W   | •  | •   | •  | •   | •                                   | •  | •  | •   | •   | •                       | •                                   | •                                     | •  | •   | •   | •   | •   | •                                    | •   | •  | •   | •   | •   | •  |
|                          | 240W   | •  | •   | •  | •   | •                                   | •  | •  | •   | •   | •                       | •                                   | •                                     | •  | •   | •   | •   | •   | •                                    | •   | •  | •   | •   | •   | •  |
|                          | 300W   | •  | •   | •  | •   | •                                   | •  | •  | •   | •   | •                       | •                                   | •                                     | •  | •   | •   | •   | •   | •                                    | •   | •  | •   | •   | •   | •  |
|                          | 500W   | •  | •   | •  | •   | •                                   | •  | •  | •   | •   | •                       | •                                   | •                                     | •  | •   | •   | •   | •   | •                                    | •   | •  | •   | •   | •   | •  |

For most up-to-date spec sheets please refer to [asd-lighting.com](http://asd-lighting.com)

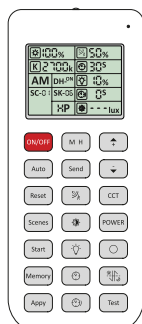


# LED AREA LIGHT WITH Q-BASE AND PHOTOCELL

PRO series

## MOTION SENSOR INFORMATION

REMOTE CONTROL **ASD-06RC** sold separately

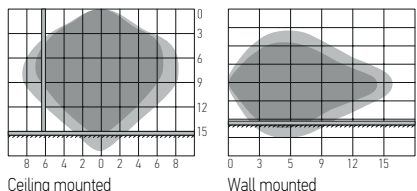


| Button               | Remarks   | Button                     | Remarks   | Button                     | Remarks  |
|----------------------|---|----------------------------|---|----------------------------|--|
| <b>ON/OFF</b> ON/OFF | Turn the sensor ON/OFF.                               | <b>M H</b> Mounting height | Adjust detection area/sensitivity levels according to real installation situations, higher or lower.                                  | <b>Up</b>                  | The main functional buttons to adjust the factors to desired level.  |
| <b>Auto</b> Auto     | Enter "sensor mode" and perform previous settings.    | <b>Send</b> Send           | Memorize and send out the previous setting of individual parameters.  | <b>Down</b>                | Press + - button to dim light directly auto in non-detection mode.   |
| <b>Reset</b> Reset   | Enter "sensor mode" and perform the default settings. | <b>%</b> Detection range   | Also known as "sensitivity", 100 % means the highest sensitivity and longest distance. Use this button and the + - buttons to adjust. | <b>CCT</b> CCT selectable  | Not applicable to this product.  |
| <b>Scenes</b> Scenes | Shows current settings saved in remote.               | <b>Daylight sensor</b>     | The preset lux level at which motion will be detected. Use this button and the + - buttons to adjust.                                 | <b>POWER</b> Power         | Adjust brightness in both ON/OFF mode & sensor mode, minimum 10%, max 100%, each time this button is pressed it changes by 5%. |
| <b>Start</b> Start   | Press this to begin scene setup.                      | <b>Stand-by dimming</b>    | After hold time, the light will dim from 100 % to optional standby dimming levels. Use this button and the + - buttons to adjust.     | <b>Reserved button</b>     | Not applicable to this product.  |
| <b>Memory</b> Memory | Saves the scene settings.                             | <b>Hold time</b>           | The period that light will stay illuminated 100 % after no motion is detected. Use this button and the + - buttons to adjust.         | <b>Daylight harvesting</b> | Daylight harvesting function enabled or disabled.  |
| <b>Apply</b> Apply   | Applies current scene settings to the fixture.        | <b>Stand-by period</b>     | The period after holdtime, during which the light keeps standby dimming level. Use this button and the + - buttons to adjust.         | <b>Test button</b>         | Press this button to test the sensor; it will temporarily change the hold time to 2s. This setting cannot be saved.            |

**!** Use the ASD-06RC remote control to put the ASD-09-NLS sensor in pairing mode. Point the remote control at the sensor and press the "RESET" button.



### MICROWAVE MOTION SENSOR:



Highest mounting height is 49.2 ft (15 m). This figure indicates the maximum distance at the highest mounting height with 100 % sensitivity.

- Well detected area
- Possibly detected area

#### User notes:

- Microwaves can penetrate walls or glass thinner than 0.8" but will be impaired if thicker than 0.8".
- The driver voltage shall be stable and float within 10 %.
- Detection area will be affected by speed of motion, mounting height and movement volume.
- Conduct testing with adequate ambient lighting for best results.
- Dimming performance differs when connected to different drivers; if the driver can't completely turn OFF, sensor can't either.
- The first time powered ON sensor, light will be ON 100% for about 10S then dims to standby level or OFF.

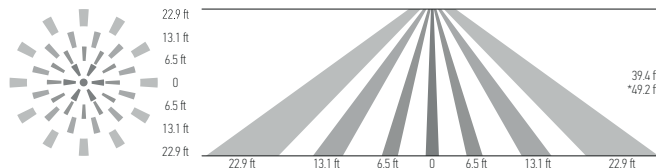
#### Installation precautions:

- Suitable for ceiling mount installation, adjust sensitivity properly if it's installed on side-wall because it gets more sensitive.
- Make sure the microwave module is completely exposed.
- The detection surface of the sensor module should be installed facing the detection area.

#### Application environment:

- Suitable for indoor application, half/completely outdoor environment conditions might trigger the sensor.
- Shall be mounted securely, to avoid any false triggers caused by movement of the fixture itself.
- Keep the sensor module away from AC input and DC output to avoid high/low frequency signal interference.

### INFRARED MOTION SENSOR:



#### User notes:

- The driver voltage shall be stable and float within 10%.
- Detection area options may not function as expected because they depend on the Fresnel lens, which physically determines their operation.
- Detection distance performance works better when moving parallel to the sensor as opposed to towards it.
- Conduct testing with adequate ambient lighting for best results.
- Dimming performance differs when connected to different drivers; if the driver can't completely turn OFF, sensor can't either.
- The first time powering ON the sensor, light will be ON 100% for about 45S then dims to standby level or OFF.

#### Installation precautions:

- PIR sensor can't be placed inside any material, fresnel lens must be completely exposed in air.
- Fresnel lens of the PIR sensor must be lower than light fixture.
- Suitable for ceiling mount installation, adjust sensitivity properly if it's installed on a wall because it will become more sensitive.

#### Application environment:

- Suitable for indoor application, partial/completely outdoor environment conditions might trigger the sensor.
- The PIR sensor is not suitable for environments with sudden changes in temperature or airflow.
- Not suitable environment if there's shelves between the sensor and target area.
- Shall be mounted securely, to avoid any false triggers caused by movement of the fixture itself.

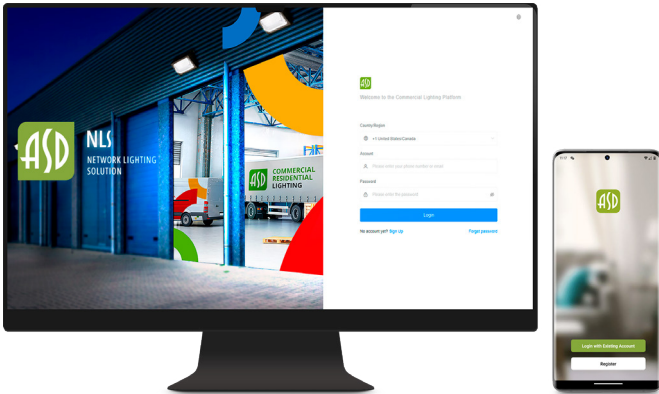
| Specifications        | models: ASD-09MW, ASD-09MW-NLS   | models: ASD-09IR, ASD-09IR-NLS                 | models: ASD-09IR50 | Default setting |
|-----------------------|--|--|--------------------|-----------------|
| Detection area        | 25 %/50 %/75 %/100 %   |  |                    | 100 %           |
| Hold time             | <b>Remote control:</b> 5 s/30 s/1 min/3 min/5 min/10 min/20 min/30 min   | <b>Built-in switch:</b> 5 s/1 min/5 min/10 min |                    | 10 min          |
| Daylight threshold    | 2 lux (0.2 fc)/10 lux (0.9 fc)/30 lux (2.8 fc)/50 lux (4.7 fc)/80 lux (7.4 fc)/120 lux (11.2 fc)/200 lux (18.6 fc)/250 lux (23.2 fc)/300 lux (27.9 fc)/350 lux (32.5 fc)/400 lux (37.2 fc)/disable |  |                    |                 |
| Standby period        | 0 s/10 s/30 s/1 min/5 min/10 min/30 min/60 min/+∞  |  |                    |                 |
| Standby dimming level | <b>Remote control:</b> 10 %/20 %/30 %/50 %   | <b>Built-in switch:</b> 0 %/10 %/30 %/50 %     |                    | 10 %            |
| Operating voltage     | 10 - 15 V  |  |                    |                 |
| Operating current     | < 30 mA  |  | < 30 mA            |                 |
| Mounting height       | max 49.2 ft (15 m)   | max 39.4 ft (12 m)                             | max 49.2 ft (15 m) |                 |
| Detection range       | ≥ 9 ft (3 m)   | 9.8 - 22.9 ft (3-7 m)                          |                    | -               |
| Operating frequency   | 5.8 GHz ± 75 MHz   |  |                    |                 |
| Transmitting power    | < 0.3 mW   |  |                    |                 |

For most up-to-date spec sheets please refer to [asd-lighting.com](http://asd-lighting.com)



# LED AREA LIGHT WITH Q-BASE AND PHOTOCELL

## PRO series



ASD NLS is a professional-grade smart control application designed to manage and control lighting fixtures in commercial properties. With ASD NLS, you can conveniently control your lights from your smartphone or PC, anytime and anywhere.

You can group fixtures by rooms, floors and objects, and create schedules based on day and time. You can also grant permanent or temporary permissions to employees and guests with different access levels. Our smart platform enables you to monitor energy usage statistics, view the status of each fixture, and much more.

► For ASD-NLS sensors download ASD NLS App and add the fixture to it according to the manual (download manuals and app from the links or scan the QR codes on the right).



[Desktop manual](#)



[Smartphone manual](#)



[ASD NLS APP download Android](#)



[ASD NLS APP download iOS](#)



**ASD-09MW-NLS**  
Microwave motion sensor NLS 3pin



**ASD-09IR-NLS**  
Infrared motion sensor NLS 3pin



### FIXTURE CONTROL

Set brightness, standby time and dimming level, or apply scenes and schedules.



### SCHEDULING

Set a variety of customizable start / end actions based on time of day and days of the week.



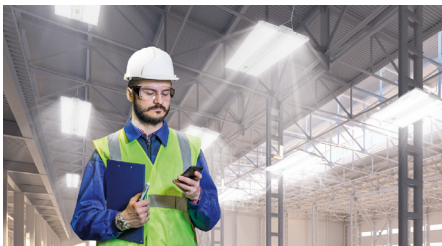
### ADVANCED AREA MANAGEMENT

Create and customize projects for different types of areas, buildings, floors and zones.



### CONTROL PERMISSIONS

Give your staff or installers control over the lighting.



### ADVANCED ENERGY CONSUMPTION

Monitor equipment status and receive daily reports.



### PROJECT OVERVIEW

Monitor device status and daily reports.



For most up-to-date spec sheets please refer to [asd-lighting.com](http://asd-lighting.com)



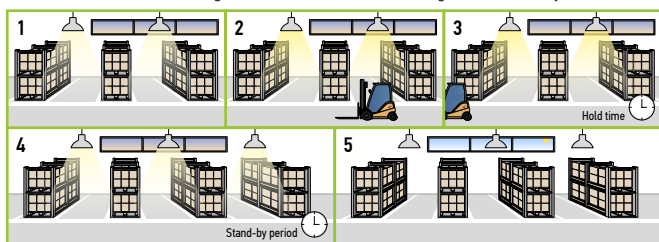


# LED AREA LIGHT WITH Q-BASE AND PHOTOCELL

## PRO series

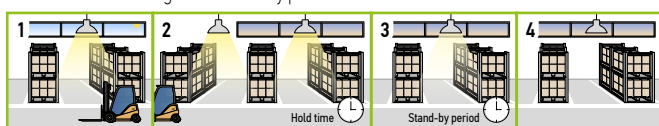
### WITH DUSK/DAWN FUNCTION:

1. With insufficient ambient brightness, sensor turns on light and keeps it at standby dimming level even if there is no motion or presence.
2. When sensor detects motion or presence it will bring the light level up to 100%.
3. After motion is no longer detected, fixture remains at 100% for hold time.
4. After the preset hold time period, it will dim to the standby dimming level and maintain it indefinitely.
5. With sufficient ambient brightness, sensor will turn OFF light automatically.



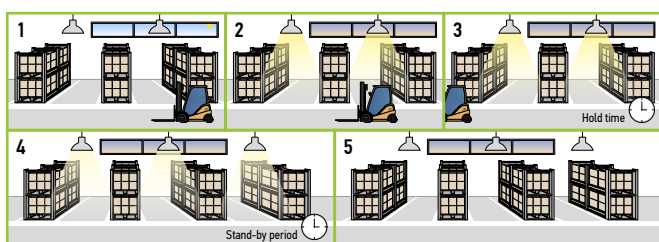
### WITH DAYLIGHT DISABLED:

1. Sensor turns ON light when motion is detected.
2. Light will stay on after detecting motion for the desired hold time.
3. Sensor dims light to standby dimming level after hold time if there is still no motion.
4. Sensor turns OFF light after standby period.



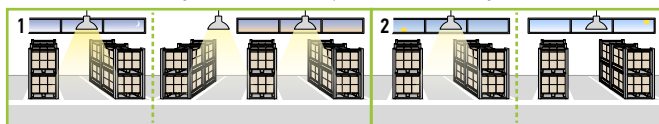
### WITH DAYLIGHT THRESHOLD:

1. With sufficient daylight, the light remains OFF even after motion is detected.
2. With insufficient daylight, the sensor turns light ON when motion is detected.
3. After there's no motion detected, the sensor keeps light ON 100% for holdtime.
4. After holdtime, sensor dims light to standby dimming level for standby period. If the standby period has been set as 0s, sensor turns light OFF automatically after holdtime.
5. The sensor turns OFF light automatically after the standby period when there's no motion detected.



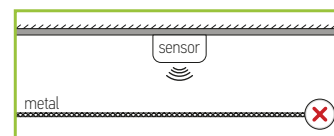
### DAYLIGHT HARVESTING:

1. When the ambient brightness is lower than the preset lux level, the sensor will automatically turn on the light and adjust the dimming according to changes in ambient brightness. As it gets darker outside, the fixtures will brighten, and as it gets brighter outside, the fixtures will dim.
2. When the ambient brightness exceeds the preset lux level, the light will turn OFF.

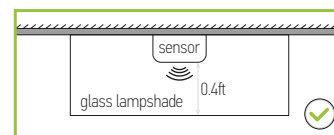


### MICROWAVE MOTION SENSOR:

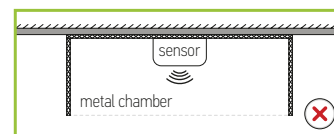
To avoid blocking the microwave emission, the microwave sensor can not be covered with metal materials, be sprayed with a coating of metal components, or have attached metal material or stickers etc.



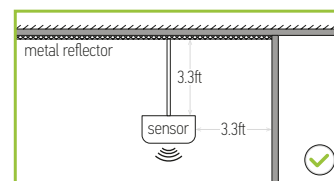
The distance between the antenna and the glass (dielectric material) should be no less than 0.4 ft when the sensor is within the glass lampshade. Otherwise, the microwave motion sensor will not penetrate the glass easily.



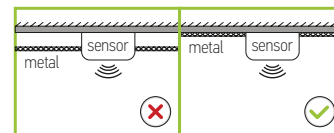
Avoid placing the sensor inside a metal chamber, this may cause a mis-trigger.



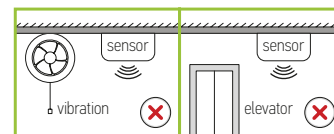
The sensor should not be placed in a small confined space. To avoid increasing the sensor detection range or abnormal operation, the sensor should be kept away from large areas of metal and glass reflectors (separation distance at least 3.3 ft). Reduce the detection area setting.



To avoid affecting the microwave signal transmission, the microwave antenna should be higher than the surrounding metal surface.

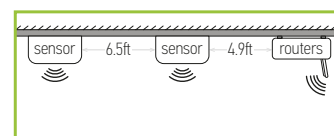


Any vibration or movement may trigger the sensor. Ensure the sensor is far from any constant movement.



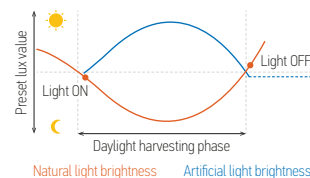
At least 2 m/6.5 ft distance between microwave sensors;

1.5 m/4.9 ft between the sensor and other wireless devices such as routers to avoid possible radio interference.



### DAYLIGHT HARVESTING SETTING:

1. Adjust "daylight" value higher than 50lux.
2. Preset "standby period" 0s.
3. Press "daylight harvesting" button on remote control to activate.



For most up-to-date spec sheets please refer to [asd-lighting.com](http://asd-lighting.com)



# LED AREA LIGHT WITH Q-BASE AND PHOTOCELL

PRO series

## INSTALLATION GUIDE

### IMPORTANT SAFETY INFORMATION:

Please read all the instructions below before installation!

- ▶ Make sure that the supply voltage corresponds to the rated product voltage.
- ▶ The product must be installed by a qualified electrician in accordance with the National Electrical Code and corresponding local codes.
- ▶ If the product is damaged, do not use it.

### ⚠ WARNING

**Risk of personal injury** – read and follow all warnings and installation instructions. Keep or give to the owner for future reference.

**Risk of cuts:** Wear gloves to prevent cuts or abrasions when removing from carton, handling, installing, and maintaining this product.

**Risk of electric shock:** This product must be installed in accordance with the applicable installation code by a person familiar with the construction and operation of the product and the hazards involved.

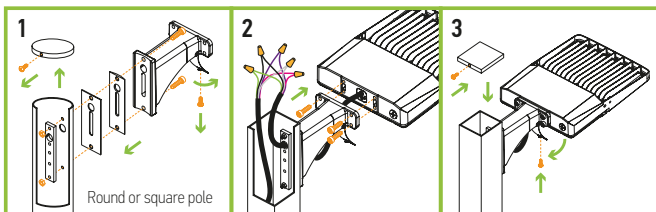
**Risk of Fire:** Minimum 194°F supply conductors. Consult a qualified electrician to ensure correct branch circuit conductor.

ASD® assumes no responsibility for claims arising out of improper or careless Installation or handling of this product.

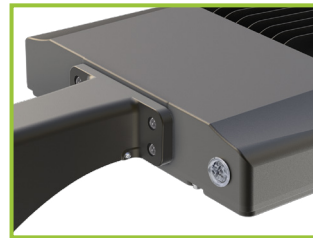
### ARM MOUNTING BRACKET:

**ASD-AM-LSB5** sold separately

1. Open up the door on the arm bracket (1 screw). Install the mounting arm onto the pole (2 bolts). Make sure the silicone gaskets form a tight seal.
2. Thread the cord from the fixture through the bracket into the pole and tighten the four M8 screws on the body of the light. Wire in accordance with wiring schematic.
3. Close the door on the arm bracket (1 screw).



## BUILT-IN PHOTOCELL INFORMATION



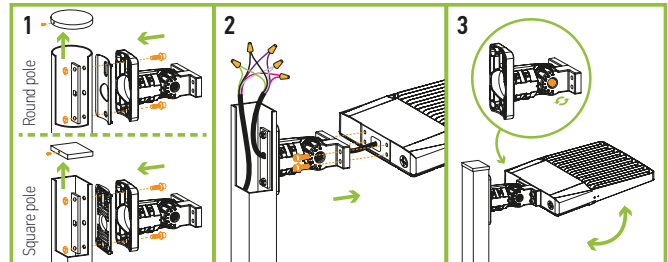
| Specifications          |                                |
|-------------------------|--------------------------------|
| Light level to turn ON  | ≤ 80 lux (≈ 7.4 fc)            |
| Light level to turn OFF | ≥ 150 lux (≈ 13.9 fc)          |
| Operating temperature   | -40°F to 140°F (-40°C to 60°C) |

The fixtures with a built-in photocell automatically turn off during daylight hours. Photocell can be easily deactivated by unscrewing it.

### ADJUSTABLE ARM MOUNTING BRACKET:

**ASD-AMR-LSB5** **ASD-AMR2-LSB** sold separately

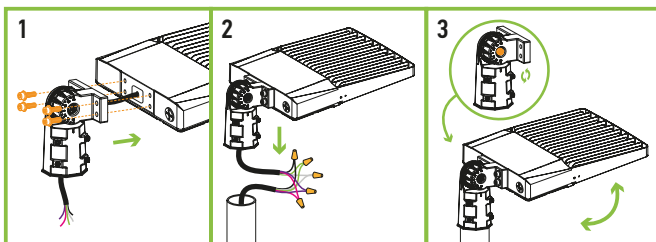
1. Open up the door on the arm bracket (1 screw). Install the mounting arm onto the pole (2 bolts). Make sure the silicone gaskets form a tight seal. Choose gasket depending on the shape of the pole (round or flat).
2. Thread the cord from the fixture through the bracket into the pole and tighten the four M8 screws on the body of the light. Wire in accordance with wiring schematic.
3. Adjust the fixture angle with the large hex bolt on the side of the bracket. If necessary.



### SLIP FITTER MOUNTING BRACKET:

**ASD-SF-LSB5** **ASD-SF2-LSB** sold separately

1. Thread the wire through the slip fitter and secure it to the fixture with four screws.
2. Make AC connections in accordance with wiring diagram.
3. If necessary adjust the fixture angle with the large hex bolt on the side of the slip fitter.



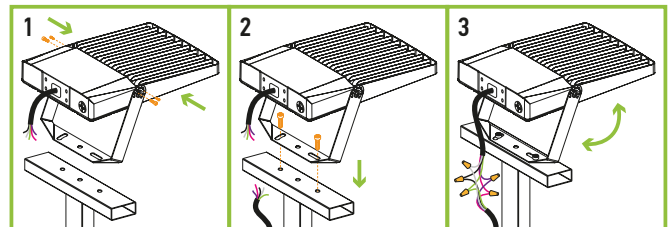
\* The wiring is inside the pole, the side is sealed with a rubber ring and secured with screws, preventing water from getting inside the fixture.

### FLOODLIGHT MOUNTING BRACKET:

**ASD-FM1-LSB5B** **ASD-FM2-LSB5B** **ASD-FM3-LSB5B**

sold separately

1. Drill holes on the mounting surface corresponding to the holes in the arm. Attach fixture to bracket with 2 screws.
2. Align bracket holes with mounting surface holes and secure with 2 screws.
3. Wire in accordance with the wiring schematic. Seal the connections with the back plate of the fixture. Adjust fixture angle as needed.



For most up-to-date spec sheets please refer to [asd-lighting.com](http://asd-lighting.com)

ASD LIGHTING CORP

E-mail: [orders@asd-lighting.com](mailto:orders@asd-lighting.com) | Web site: [www.asd-lighting.com](http://www.asd-lighting.com)





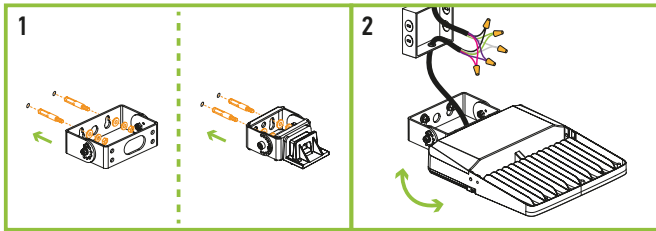
# LED AREA LIGHT WITH Q-BASE AND PHOTOCELL

PRO series

## FULL TRUNNION MOUNTING BRACKET:

**ASD-TR-LSB5** **ASD-TR2-LSB** sold separately

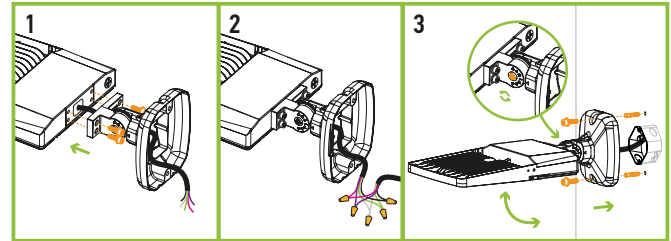
1. Drill holes on the mounting surface matching in size to the holes on the arm. Secure the bracket on the wall with screws. Pull wires through mount, secure fixture to the bracket.
2. Wire the AC power into the water tight junction box as shown in the wiring schematic diagram. Adjust the screw position to get desired angle when necessary.



## WALL MOUNTING BRACKET:

**ASD-WMB-LSB** sold separately

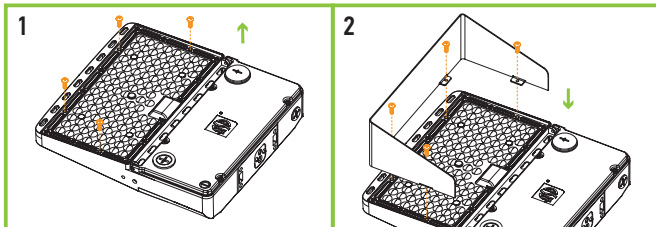
1. Take the bracket apart. Mark and drill two holes in the wall. Insert two dowels into the holes and secure the bracket to the wall using bolts. Then, feed the wire from the bracket into the lamp body. Once properly positioned, use four screws to fasten the lamp body to the gasket.
2. Wire according to the electrical schematic diagram.
3. Put the bracket on the bolt with screws. Turn the large screws to adjust the angle.



## SPILL SHIELD INSTALLATION:

**ASD-SPS-LSB5** **ASD-SPS2-LSB5** sold separately

1. Take out 4 screws from the front of the 150-200W fixture, 6 screws for 240-300W fixture.
2. Attach the visor to the lens and secure it with new screws. For 150-200W fixtures, use ASD-SPS-LSB5 and 4 bolts; for 240-300W fixtures, use ASD-SPS2-LSB5 and 6 bolts. Ensure all screws are tightened securely.

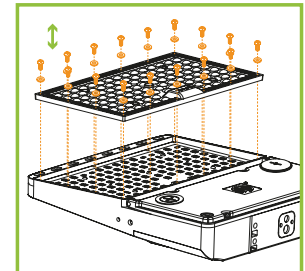


## LENS INSTALLATION:

**ASD-L2A-LSB5B** **ASD-L4A-LSB5B** **ASD-L5A-LSB5B**  
**ASD-L2B-LSB5B** **ASD-L4B-LSB5B** **ASD-L5B-LSB5B**  
**ASD-LFLA-LSB5B** **ASD-LFLB-LSB5B** sold separately

1. Unscrew all screws from the original lens (T3-M) on the housing.
2. Install the rubber ring on new lens (T4/T5-M, sold separately).
3. Place the lens on the housing and make sure it fits the LEDs correctly.
4. Tighten all the screws back.

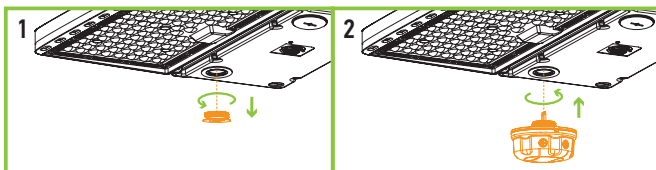
| Models     | Lens                         |
|------------|------------------------------|
| 150W, 200W | 1 lens (L2A, L4A, L5A, LFLA) |
| 240W, 300W | 1 lens (L2B, L4B, L5B, LFLB) |
| 500W       | 2 lenses (L4B, L5B, LFLB)    |



## MOTION SENSOR INSTALLATION:

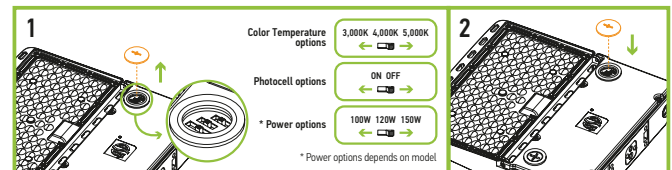
**ASD-09Mw** **ASD-09IR** **ASD-09IR50**  
**ASD-09Mw-NLS** **ASD-09IR-NLS** sold separately

1. Unscrew the sensor base cap.
2. Insert and twist the sensor until it is tight on the base surface.



## POWER, COLOR TEMPERATURE AND PHOTOCELL SETTINGS:

1. Open knock-out cap in the front panel of the fixture. Select needed power, color temperature and on/off photocell mode with a simple switch.
2. Then close the knock-out cap back.



For most up-to-date spec sheets please refer to [asd-lighting.com](http://asd-lighting.com)

ASD LIGHTING CORP

E-mail: [orders@asd-lighting.com](mailto:orders@asd-lighting.com) | Web site: [www.asd-lighting.com](http://www.asd-lighting.com)





# LED AREA LIGHT WITH Q-BASE AND PHOTOCCELL

PRO series

## ORDERING INFORMATION

| Model                                   | Product dimensions            | Weight          | Pcs. Per carton | Carton size             | Carton weight | UPC         |
|---|-------------------------------|-----------------|-----------------|-------------------------|---------------|-------------|
| <b>LSB5B-PRO 170lm/W</b>                |                               |                 |                 |                         |               |             |
| ASD-LSB5B-PRO-150BK                     | 12 5/16" x 11 5/16" x 2 7/16" | 5.7 lbs(2.6kg)  | 1               | 14.57" x 13.39" x 4.72" | 6.8 lbs       | 81012811871 |
| ASD-LSB5B-PRO-150BR                     | 12 5/16" x 11 5/16" x 2 7/16" | 5.7 lbs(2.6kg)  | 1               | 14.57" x 13.39" x 4.72" | 6.8 lbs       | 81012811604 |
| ASD-LSB5B-PRO-150SL                     | 12 5/16" x 11 5/16" x 2 7/16" | 5.7 lbs(2.6kg)  | 1               | 14.57" x 13.39" x 4.72" | 6.8 lbs       | 81012811835 |
| ASD-LSB5B-PRO-150WH                     | 12 5/16" x 11 5/16" x 2 7/16" | 5.7 lbs(2.6kg)  | 1               | 14.57" x 13.39" x 4.72" | 6.8 lbs       | 81012811873 |
| ASD-LSB5B-PRO-200BR                     | 12 5/16" x 11 5/16" x 2 7/16" | 5.7 lbs(2.6kg)  | 1               | 14.57" x 13.39" x 4.72" | 6.8 lbs       | 81012811605 |
| ASD-LSB5B-PRO-240BR                     | 16 9/16" x 12 3/16" x 2 1/2"  | 7.1 lbs(3.2kg)  | 1               | 18.90" x 14.17" x 4.72" | 8.2 lbs       | 81012811606 |
| ASD-LSB5B-PRO-300BK                     | 16 9/16" x 12 3/16" x 2 1/2"  | 7.1 lbs(3.2kg)  | 1               | 18.90" x 14.17" x 4.72" | 8.2 lbs       | 81012811890 |
| ASD-LSB5B-PRO-300BR                     | 16 9/16" x 12 3/16" x 2 1/2"  | 7.1 lbs(3.2kg)  | 1               | 18.90" x 14.17" x 4.72" | 8.2 lbs       | 81012811607 |
| ASD-LSB5B-PRO-300SL                     | 16 9/16" x 12 3/16" x 2 1/2"  | 7.1 lbs(3.2kg)  | 1               | 18.90" x 14.17" x 4.72" | 8.2 lbs       | 81012811881 |
| ASD-LSB5B-PRO-300WH                     | 16 9/16" x 12 3/16" x 2 1/2"  | 7.1 lbs(3.2kg)  | 1               | 18.90" x 14.17" x 4.72" | 8.2 lbs       | 81012811882 |
| ASD-LSB5B-PRO-500BR                     | 29 7/16" x 12 3/16" x 2 3/4"  | 14.1 lbs(6.4kg) | 1               | 31.30" x 14.17" x 4.92" | 15.7 lbs      | 81012811688 |
| <b>LSB5BHV-PRO HIGH VOLTAGE 170lm/W</b> |                               |                 |                 |                         |               |             |
| ASD-LSB5BHV-PRO-150BR                   | 12 5/16" x 11 5/16" x 2 7/16" | 5.7 lbs(2.6kg)  | 1               | 14.57" x 13.39" x 4.72" | 6.8 lbs       | 81012811608 |
| ASD-LSB5BHV-PRO-200BR                   | 12 5/16" x 11 5/16" x 2 7/16" | 5.7 lbs(2.6kg)  | 1               | 14.57" x 13.39" x 4.72" | 6.8 lbs       | 81012811689 |
| ASD-LSB5BHV-PRO-240BR                   | 16 9/16" x 12 3/16" x 2 1/2"  | 7.1 lbs(3.2kg)  | 1               | 18.90" x 14.17" x 4.72" | 8.2 lbs       | 81012811609 |
| ASD-LSB5BHV-PRO-300BR                   | 16 9/16" x 12 3/16" x 2 1/2"  | 7.1 lbs(3.2kg)  | 1               | 18.90" x 14.17" x 4.72" | 8.2 lbs       | 81012811610 |
| ASD-LSB5BHV-PRO-300SL                   | 16 9/16" x 12 3/16" x 2 1/2"  | 7.1 lbs(3.2kg)  | 1               | 18.90" x 14.17" x 4.72" | 8.2 lbs       | 81012811612 |
| ASD-LSB5BHV-PRO-500BR                   | 29 7/16" x 12 3/16" x 2 3/4"  | 14.1 lbs(6.4kg) | 1               | 31.30" x 14.17" x 4.92" | 15.7 lbs      | 81012811690 |

## ACCESSORIES:

| Model           | Product dimensions            | Pcs. in middle box* | Middle box size     | Middle box weight | Pcs. per carton | Carton size              | Carton weight | UPC          | GTIN 14 in middle box* | GTIN 14        |
|-----------------|-------------------------------|---------------------|---------------------|-------------------|-----------------|--------------------------|---------------|--------------|------------------------|----------------|
| ASD-09MW-WH     | 2 1/8" x 2 1/8" x 1 5/16"     | 10                  | 5.5" x 2.6" x 11.4" | 1.2 lbs           | 120             | 17.32" x 11.81" x 11.02" | 12.1 lbs      | 81012811370  | 20810128113704         | 30810128113701 |
| ASD-09MW-BK     | 2 1/8" x 2 1/8" x 1 5/16"     | 10                  | 5.5" x 2.6" x 11.4" | 1.2 lbs           | 120             | 17.32" x 11.81" x 11.02" | 12.1 lbs      | 81012811371  | 20810128113711         | 30810128113718 |
| ASD-09IR-WH     | 2 1/8" x 2 1/8" x 1 11/16"    | 10                  | 5.5" x 2.6" x 11.4" | 1.2 lbs           | 120             | 17.32" x 11.81" x 11.02" | 12.1 lbs      | 81012811369  | 20810128113698         | 30810128113695 |
| ASD-09IR-BK     | 2 1/8" x 2 1/8" x 1 11/16"    | 10                  | 5.5" x 2.6" x 11.4" | 1.2 lbs           | 120             | 17.32" x 11.81" x 11.02" | 12.1 lbs      | 81012811434  | 20810128114343         | 30810128114340 |
| ASD-09IR50-WH   | 2 1/8" x 2 1/8" x 1 11/16"    | 10                  | 5.5" x 2.6" x 11.4" | 1.2 lbs           | 120             | 17.32" x 11.81" x 11.02" | 10.7 lbs      | 81012811679  | 20810128116791         | 30810128116798 |
| ASD-09IR-NLS-WH | 2 1/8" x 2 1/8" x 1 11/16"    | 10                  | 5.5" x 2.6" x 11.4" | 1.2 lbs           | 120             | 17.32" x 11.81" x 11.02" | 12.1 lbs      | 81012811375  | 20810128113759         | 30810128113756 |
| ASD-09MW-NLS-WH | 2 1/8" x 2 1/8" x 1 3/8"      | 10                  | 5.5" x 2.6" x 11.4" | 1.2 lbs           | 120             | 17.32" x 11.81" x 11.02" | 12.1 lbs      | 81012811376  | 20810128113766         | 30810128113763 |
| ASD-06RC        | 5 11/16" x 1 3/4" x 13/16"    | 10                  | 6.3" x 2.9" x 11.4" | 0.5 lbs           | 60              | 15.75" x 11.81" x 9.29"  | 24.7 lbs      | 81012811437  | 30810128114371         | 40810128114378 |
| ASD-AM-LSB5-WH  | 6 13/16" x 6 1/4" x 2 5/16"   | -                   | -                   | -                 | 10              | 26.97" x 9.45" x 15.94"  | 15.4 lbs      | 81012811847  | -                      | 10810128118474 |
| ASD-AM-LSB5-SL  | 6 13/16" x 6 1/4" x 2 5/16"   | -                   | -                   | -                 | 10              | 26.97" x 9.45" x 15.94"  | 15.4 lbs      | 81012811846  | -                      | 10810128118467 |
| ASD-AM-LSB5-BR  | 6 13/16" x 6 1/4" x 2 5/16"   | -                   | -                   | -                 | 10              | 26.97" x 9.45" x 15.94"  | 15.4 lbs      | 81012811620  | -                      | 10810128116203 |
| ASD-AM-LSB5-BK  | 6 13/16" x 6 1/4" x 2 5/16"   | -                   | -                   | -                 | 10              | 26.97" x 9.45" x 15.94"  | 15.4 lbs      | 81012811845  | -                      | 10810128118450 |
| ASD-AMR-LSB5-WH | 7 1/4" x 4 15/16" x 6 1/4"    | -                   | -                   | -                 | 20              | 27.36" x 16.54" x 13.98" | 52.9 lbs      | 81012811329  | -                      | 10810128113295 |
| ASD-AMR-LSB5-SL | 7 1/4" x 4 15/16" x 6 1/4"    | -                   | -                   | -                 | 20              | 27.36" x 16.54" x 13.98" | 52.9 lbs      | 81012811225  | -                      | 20810128112257 |
| ASD-AMR-LSB5-BR | 7 1/4" x 4 15/16" x 6 1/4"    | -                   | -                   | -                 | 20              | 27.36" x 16.54" x 13.98" | 52.9 lbs      | 81012811224  | -                      | 20810128112240 |
| ASD-AMR-LSB5-BK | 7 1/4" x 4 15/16" x 6 1/4"    | -                   | -                   | -                 | 20              | 27.36" x 16.54" x 13.98" | 52.9 lbs      | 81012811223  | -                      | 20810128112233 |
| ASD-AMR2-LSB-WH | 9 5/8" x 6 1/4" x 4 5/16"     | -                   | -                   | -                 | 10              | 21.38" x 9.57" x 13.43"  | 30.9 lbs      | 81012811401  | -                      | 10810128114018 |
| ASD-AMR2-LSB-SL | 9 5/8" x 6 1/4" x 4 5/16"     | -                   | -                   | -                 | 10              | 21.38" x 9.57" x 13.43"  | 30.9 lbs      | 81012811333  | -                      | 10810128113332 |
| ASD-AMR2-LSB-BR | 9 5/8" x 6 1/4" x 4 5/16"     | -                   | -                   | -                 | 10              | 21.38" x 9.57" x 13.43"  | 30.9 lbs      | 81012811332  | -                      | 10810128113325 |
| ASD-AMR2-LSB-BK | 9 5/8" x 6 1/4" x 4 5/16"     | -                   | -                   | -                 | 10              | 21.38" x 9.57" x 13.43"  | 30.9 lbs      | 81012811331  | -                      | 10810128113318 |
| ASD-SF-LSB5-WH  | 7 1/16" x 4 15/16" x 3 1/16"  | -                   | -                   | -                 | 20              | 15.51" x 17.72" x 11.14" | 35.3 lbs      | 81012811330  | -                      | 10810128113301 |
| ASD-SF-LSB5-SL  | 7 1/16" x 4 15/16" x 3 1/16"  | -                   | -                   | -                 | 20              | 15.51" x 17.72" x 11.14" | 35.3 lbs      | 81012811197  | -                      | 10810128111970 |
| ASD-SF-LSB5-BR  | 7 1/16" x 4 15/16" x 3 1/16"  | -                   | -                   | -                 | 20              | 15.51" x 17.72" x 11.14" | 35.3 lbs      | 81012811104  | -                      | 20810128111045 |
| ASD-SF-LSB5-BK  | 7 1/16" x 4 15/16" x 3 1/16"  | -                   | -                   | -                 | 20              | 15.51" x 17.72" x 11.14" | 35.3 lbs      | 81012811196  | -                      | 10810128111963 |
| ASD-SF2-LSB-WH  | 10 11/16" x 4 5/16" x 3 3/8"  | -                   | -                   | -                 | 10              | 18.43" x 9.25" x 11.77"  | 35.1 lbs      | 81012811425  | -                      | 10810128114254 |
| ASD-SF2-LSB-SL  | 10 11/16" x 4 5/16" x 3 3/8"  | -                   | -                   | -                 | 10              | 18.43" x 9.25" x 11.77"  | 35.1 lbs      | 81012811424  | -                      | 10810128114247 |
| ASD-SF2-LSB-BR  | 10 11/16" x 4 5/16" x 3 3/8"  | -                   | -                   | -                 | 10              | 18.43" x 9.25" x 11.77"  | 35.1 lbs      | 81012811423  | -                      | 10810128114230 |
| ASD-SF2-LSB-BK  | 10 11/16" x 4 5/16" x 3 3/8"  | -                   | -                   | -                 | 10              | 18.43" x 9.25" x 11.77"  | 35.1 lbs      | 81012811422  | -                      | 10810128114223 |
| ASD-TN-BR       | 9 7/16" x 3 15/16" x 8 11/16" | -                   | -                   | -                 | 5               | 21.73" x 10.43" x 9.80"  | 26.2 lbs      | 81012811680  | -                      | 10810128116807 |
| ASD-B2BT        | 26" x 14 3/16" x 2 3/4"       | -                   | -                   | -                 | 2               | 28.43" x 9.92" x 18.50"  | 28.0 lbs      | 81012811787  | -                      | 10810128117873 |
| ASD-B3BT        | 37 13/16" x 14 3/16" x 2 3/4" | -                   | -                   | -                 | 1               | 39.45" x 4.41" x 17.32"  | 19.0 lbs      | 81012811788  | -                      | -              |
| ASD-TR-LSB5-WH  | 6 9/16" x 4 7/16" x 1 7/8"    | -                   | -                   | -                 | 20              | 14.76" x 10.31" x 12.40" | 44.1 lbs      | 81012811343  | -                      | 10810128113431 |
| ASD-TR-LSB5-SL  | 6 9/16" x 4 7/16" x 1 7/8"    | -                   | -                   | -                 | 20              | 14.76" x 10.31" x 12.40" | 44.1 lbs      | 81012811199  | -                      | 10810128111994 |
| ASD-TR-LSB5-BR  | 6 9/16" x 4 7/16" x 1 7/8"    | -                   | -                   | -                 | 20              | 14.76" x 10.31" x 12.40" | 44.1 lbs      | 81012811105  | -                      | 10810128111055 |
| ASD-TR-LSB5-BK  | 6 9/16" x 4 7/16" x 1 7/8"    | -                   | -                   | -                 | 20              | 14.76" x 10.31" x 12.40" | 44.1 lbs      | 81012811198  | -                      | 10810128111987 |
| ASD-TR2-LSB-WH  | 7 1/16" x 5 7/8" x 2 11/16"   | -                   | -                   | -                 | 10              | 14.5" x 14" x 8.2"       | 31.7 lbs      | 810128114295 | -                      | 10810128114292 |
| ASD-TR2-LSB-SL  | 7 1/16" x 5 7/8" x 2 11/16"   | -                   | -                   | -                 | 10              | 14.5" x 14" x 8.2"       | 31.7 lbs      | 810128114288 | -                      | 10810128114285 |
| ASD-TR2-LSB-BR  | 7 1/16" x 5 7/8" x 2 11/16"   | -                   | -                   | -                 | 10              | 14.5" x 14" x 8.2"       | 31.7 lbs      | 810128114271 | -                      | 10810128114278 |
| ASD-TR2-LSB-BK  | 7 1/16" x 5 7/8" x 2 11/16"   | -                   | -                   | -                 | 10              | 14.5" x 14" x 8.2"       | 31.7 lbs      | 810128114264 | -                      | 10810128114261 |

For most up-to-date spec sheets please refer to [asd-lighting.com](http://asd-lighting.com)

ASD LIGHTING CORP

E-mail: [orders@asd-lighting.com](mailto:orders@asd-lighting.com) | Web site: [www.asd-lighting.com](http://www.asd-lighting.com)





# LED AREA LIGHT WITH Q-BASE AND PHOTOCELL

## PRO series

| Model            | Product dimensions           | Pcs. in middle box* | Middle box size | Middle box weight | Pcs. per carton | Carton size              | Carton weight | UPC         | GTIN 14 in middle box* | GTIN 14        |
|------------------|------------------------------|---------------------|-----------------|-------------------|-----------------|--------------------------|---------------|-------------|------------------------|----------------|
| ASD-FM1-LSB5B-WH | 11 7/16" x 6 5/16" x 9 7/8"  | -                   | -               | -                 | 10              | 24.80" x 13.78" x 12.40" | 21.2 lbs      | 81012811839 | -                      | 10810128118399 |
| ASD-FM1-LSB5B-SL | 11 7/16" x 6 5/16" x 9 7/8"  | -                   | -               | -                 | 10              | 24.80" x 13.78" x 12.40" | 21.2 lbs      | 81012811672 | -                      | 10810128116722 |
| ASD-FM1-LSB5B-BR | 11 7/16" x 6 5/16" x 9 7/8"  | -                   | -               | -                 | 10              | 24.80" x 13.78" x 12.40" | 21.2 lbs      | 81012811838 | -                      | 10810128118382 |
| ASD-FM1-LSB5B-BK | 11 7/16" x 6 5/16" x 9 7/8"  | -                   | -               | -                 | 10              | 24.80" x 13.78" x 12.40" | 21.2 lbs      | 81012811671 | -                      | 10810128116715 |
| ASD-FM2-LSB5B-WH | 12 9/16" x 6 1/16" x 9 5/16" | -                   | -               | -                 | 10              | 22.64" x 13.98" x 13.98" | 27.6 lbs      | 81012811841 | -                      | 10810128118412 |
| ASD-FM2-LSB5B-SL | 12 9/16" x 6 1/16" x 9 5/16" | -                   | -               | -                 | 10              | 22.64" x 13.98" x 13.98" | 27.6 lbs      | 81012811674 | -                      | 10810128116746 |
| ASD-FM2-LSB5B-BR | 12 9/16" x 6 1/16" x 9 5/16" | -                   | -               | -                 | 10              | 22.64" x 13.98" x 13.98" | 27.6 lbs      | 81012811673 | -                      | 10810128116739 |
| ASD-FM2-LSB5B-BK | 12 9/16" x 6 1/16" x 9 5/16" | -                   | -               | -                 | 10              | 22.64" x 13.98" x 13.98" | 27.6 lbs      | 81012811840 | -                      | 10810128118405 |
| ASD-FM3-LSB5B-WH | 12 11/16" x 7 1/2" x 12 3/8" | -                   | -               | -                 | 5               | 14.96" x 13.78" x 13.78" | 22.1 lbs      | 81012811844 | -                      | 10810128118443 |
| ASD-FM3-LSB5B-SL | 12 11/16" x 7 1/2" x 12 3/8" | -                   | -               | -                 | 5               | 14.96" x 13.78" x 13.78" | 22.1 lbs      | 81012811842 | -                      | 10810128118429 |
| ASD-FM3-LSB5B-BR | 12 11/16" x 7 1/2" x 12 3/8" | -                   | -               | -                 | 5               | 14.96" x 13.78" x 13.78" | 22.1 lbs      | 81012811675 | -                      | 10810128116753 |
| ASD-FM3-LSB5B-BK | 12 11/16" x 7 1/2" x 12 3/8" | -                   | -               | -                 | 5               | 14.96" x 13.78" x 13.78" | 22.1 lbs      | 81012811843 | -                      | 10810128118436 |
| ASD-WMB-LSB-BR   | 7 3/16" x 6 1/4" x 3 5/16"   | -                   | -               | -                 | 8               | 18.50" x 15.75" x 13.98" | 9.3 lbs       | 81012811848 | -                      | 10810128118481 |
| ASD-SPS-LSB5-BR  | 11" x 5 7/8" x 2 3/4"        | -                   | -               | -                 | 10              | 15.35" x 12.95" x 12.40" | 13.2 lbs      | 81012811784 | -                      | 10810128117842 |
| ASD-SPS2-LSB5-BR | 11 15/16" x 8 1/2" x 2 3/4"  | -                   | -               | -                 | 10              | 18.50" x 15.55" x 12.99" | 17.6 lbs      | 81012811785 | -                      | 10810128117859 |
| ASD-L2A-LSB5B    | 10 9/16" x 5 7/8" x 1 1/2"   | -                   | -               | -                 | 30              | 10.83" x 8.46" x 12.01"  | 11.7 lbs      | 81012811613 | -                      | 10810128116135 |
| ASD-L4A-LSB5B    | 10 9/16" x 5 7/8" x 1 1/2"   | -                   | -               | -                 | 30              | 10.83" x 8.46" x 12.01"  | 11.7 lbs      | 81012811615 | -                      | 10810128116159 |
| ASD-L5A-LSB5B    | 10 9/16" x 5 7/8" x 1 1/2"   | -                   | -               | -                 | 30              | 10.83" x 8.46" x 12.01"  | 11.7 lbs      | 81012811617 | -                      | 10810128116173 |
| ASD-LFLA-LSB5B   | 10 9/16" x 5 7/8" x 1 1/2"   | -                   | -               | -                 | 30              | 10.83" x 8.46" x 12.01"  | 11.7 lbs      | 81012811619 | -                      | 10810128116197 |
| ASD-L2B-LSB5B    | 11 7/8" x 8 1/4" x 7 1/16"   | -                   | -               | -                 | 30              | 11.81" x 10.83" x 12.80" | 12.4 lbs      | 81012811614 | -                      | 10810128116142 |
| ASD-L4B-LSB5B    | 11 7/8" x 8 1/4" x 7 1/16"   | -                   | -               | -                 | 30              | 11.81" x 10.83" x 12.80" | 12.4 lbs      | 81012811616 | -                      | 10810128116166 |
| ASD-L5B-LSB5B    | 11 7/8" x 8 1/4" x 7 1/16"   | -                   | -               | -                 | 30              | 11.81" x 10.83" x 12.80" | 12.4 lbs      | 81012811618 | -                      | 10810128116180 |
| ASD-LFLB-LSB5B   | 11 7/8" x 8 1/4" x 7 1/16"   | -                   | -               | -                 | 30              | 11.81" x 10.83" x 12.64" | 12.4 lbs      | 81012811687 | -                      | 10810128116876 |

## ANNEX 1

| Model                 | Watts | 3,000 K   | 4,000 K   | 5,000 K   |
|-----------------------|-------|-----------|-----------|-----------|
| ASD-LSB5B-PRO-150WH   | 100W  | 17,215 lm | 18,124 lm | 17,388 lm |
| ASD-LSB5B-PRO-150SL   | 120W  | 19,958 lm | 20,827 lm | 20,520 lm |
| ASD-LSB5B-PRO-150BR   | 150W  | 24,335 lm | 25,480 lm | 24,141 lm |
| ASD-LSB5B-PRO-150BK   |       |           |           |           |
| ASD-LSB5B-PRO-200BR   | 100W  | 17,707 lm | 18,646 lm | 18,135 lm |
|                       | 150W  | 24,750 lm | 25,904 lm | 25,516 lm |
|                       | 200W  | 32,410 lm | 33,541 lm | 33,273 lm |
| ASD-LSB5B-PRO-240BR   | 150W  | 25,935 lm | 26,972 lm | 26,433 lm |
|                       | 200W  | 32,734 lm | 34,305 lm | 33,619 lm |
|                       | 240W  | 38,197 lm | 40,208 lm | 39,419 lm |
| ASD-LSB5B-PRO-300WH   | 200W  | 35,785 lm | 37,163 lm | 37,051 lm |
|                       | 240W  | 41,015 lm | 43,620 lm | 42,765 lm |
|                       | 300W  | 48,844 lm | 52,312 lm | 51,005 lm |
| ASD-LSB5B-PRO-300SL   | 300W  | 51,980 lm | 55,099 lm | 54,658 lm |
|                       | 400W  | 65,693 lm | 69,886 lm | 69,521 lm |
|                       | 500W  | 80,148 lm | 84,993 lm | 83,326 lm |
| ASD-LSB5B-PRO-500BR   | 100W  | 18,124 lm | 19,082 lm | 18,616 lm |
|                       | 120W  | 20,140 lm | 20,758 lm | 20,446 lm |
|                       | 150W  | 23,898 lm | 25,063 lm | 24,436 lm |
| ASD-LSB5BHV-PRO-150BR | 100W  | 17,463 lm | 18,245 lm | 18,135 lm |
|                       | 150W  | 25,137 lm | 65,181 lm | 25,950 lm |
|                       | 200W  | 32,410 lm | 35,081 lm | 34,052 lm |
| ASD-LSB5BHV-PRO-200BR | 150W  | 25,427 lm | 26,487 lm | 26,225 lm |
|                       | 200W  | 32,474 lm | 34,632 lm | 34,806 lm |
|                       | 240W  | 38,976 lm | 41,003 lm | 40,224 lm |
| ASD-LSB5BHV-PRO-300SL | 200W  | 33,475 lm | 35,274 lm | 35,098 lm |
|                       | 240W  | 39,568 lm | 41,546 lm | 40,923 lm |
|                       | 300W  | 48,505 lm | 52,156 lm | 51,208 lm |
| ASD-LSB5BHV-PRO-300BR | 300W  | 53,588 lm | 56,707 lm | 55,323 lm |
|                       | 400W  | 65,770 lm | 71,671 lm | 70,404 lm |
|                       | 500W  | 80,753 lm | 86,367 lm | 83,851 lm |

| Model                 | BUG rating |
|-----------------------|------------|
| ASD-LSB5B-PRO-150WH   | B4-U0-G4   |
| ASD-LSB5B-PRO-150SL   |            |
| ASD-LSB5B-PRO-150BR   |            |
| ASD-LSB5B-PRO-150BK   |            |
| ASD-LSB5B-PRO-200BR   |            |
| ASD-LSB5B-PRO-240BR   |            |
| ASD-LSB5BHV-PRO-150BR |            |
| ASD-LSB5BHV-PRO-200BR |            |
| ASD-LSB5BHV-PRO-240BR |            |
| ASD-LSB5B-PRO-300WH   |            |
| ASD-LSB5B-PRO-300SL   |            |
| ASD-LSB5B-PRO-300BR   |            |
| ASD-LSB5B-PRO-300BK   |            |
| ASD-LSB5B-PRO-500BR   |            |
| ASD-LSB5BHV-PRO-300SL |            |
| ASD-LSB5BHV-PRO-300BR |            |
| ASD-LSB5BHV-PRO-500BR |            |

For most up-to-date spec sheets please refer to [asd-lighting.com](http://asd-lighting.com)