



# LED AREA LIGHT

► **DESIGN** - LED AREA LIGHT has a die-cast aluminum housing with excellent heat dissipation and anti-glare PC type III-M lens with even light distribution. It is designed to operate on 120-277V or 277-480V circuits with a 1-10V dimmable driver.

► 3G vibration rated, withstands conditions with repeated vibration, making it conform to standards for roadway.

► Surge protection 10kV protects the fixture from voltage spikes and current surges.

► **INSTALLATION** - This fixture is Wet locations rated and can be pole, post, or wall mounted using the slip fitter bracket, arm bracket, floodlight bracket, or full trunnion bracket. It comes with 4 ft cord. Perfect commercial or industrial solution for roadway lighting, highway lighting, sport lighting, parks, parking lots, backyards, and many other applications.

► **ADVANTAGES** - With calculated lifespan up to 163,000 hours, these fixtures are made to last decades under normal operation! ASD provides a 5-year limited warranty along with UL and DLC Premium certifications to guarantee top quality products and safety!

Catalog number	
Notes	
Type	



Finish:	White	Bronze
	Silver	Black

Model	Watts	Voltage	Dimmable	Lumens	CCT	Finish	Dimensions (LxWxH)	Cord	Bracket
ASD-LSB2-60D50W-PRM	60W	120-277 V	1-10 V	8,520 lm	5,000 K	White	16-15/16" x 11-15/16" x 4-1/16"	4 ft	-
ASD-LSB2-60D50B-PRM	60W	120-277 V	1-10 V	8,520 lm	5,000 K	Bronze	16-15/16" x 11-15/16" x 4-1/16"	4 ft	-
ASD-LSB2-100D40B-PRM	100W	120-277 V	1-10 V	13,200 lm	4,000 K	Bronze	16-15/16" x 11-15/16" x 4-1/16"	4 ft	-
ASD-LSB2-100D50B-PRM	100W	120-277 V	1-10 V	13,400 lm	5,000 K	Bronze	16-15/16" x 11-15/16" x 4-1/16"	4 ft	-
ASD-LSB2-100D50B-SF	100W	120-277 V	1-10 V	13,400 lm	5,000 K	Bronze	25-1/4" x 11-15/16" x 4-1/16"	4 ft	Slip fitter
ASD-LSB2-100D50B-AR	100W	120-277 V	1-10 V	13,400 lm	5,000 K	Bronze	23-1/8" x 11-15/16" x 5-7/16"	4 ft	Arm
ASD-LSB2-150D30B-PRM	150W	120-277 V	1-10 V	19,500 lm	3,000 K	Bronze	16-15/16" x 11-15/16" x 4-1/16"	4 ft	-
ASD-LSB2-150D40B-PRM	150W	120-277 V	1-10 V	19,650 lm	4,000 K	Bronze	16-15/16" x 11-15/16" x 4-1/16"	4 ft	-
ASD-LSB2-150D50W-PRM	150W	120-277 V	1-10 V	19,800 lm	5,000 K	White	16-15/16" x 11-15/16" x 4-1/16"	4 ft	-
ASD-LSB2-150D50-SL	150W	120-277 V	1-10 V	19,800 lm	5,000 K	Silver	16-15/16" x 11-15/16" x 4-1/16"	4 ft	-
ASD-LSB2-150D50B-PRM	150W	120-277 V	1-10 V	19,800 lm	5,000 K	Bronze	16-15/16" x 11-15/16" x 4-1/16"	4 ft	-
ASD-LSB2-150D50-BK	150W	120-277 V	1-10 V	19,800 lm	5,000 K	Black	16-15/16" x 11-15/16" x 4-1/16"	4 ft	-
ASD-LSB2-150D50B-SF	150W	120-277 V	1-10 V	19,800 lm	5,000 K	Bronze	25-1/4" x 11-15/16" x 4-1/16"	4 ft	Slip fitter
ASD-LSB2-150D50B-AR	150W	120-277 V	1-10 V	19,800 lm	5,000 K	Bronze	23-1/8" x 11-15/16" x 5-7/16"	4 ft	Arm
ASD-LSB2-185D30B-PRM	185W	120-277 V	1-10 V	24,050 lm	3,000 K	Bronze	16-15/16" x 11-15/16" x 4-1/16"	4 ft	-
ASD-LSB2-185D50W-PRM	185W	120-277 V	1-10 V	24,420 lm	5,000 K	White	16-15/16" x 11-15/16" x 4-1/16"	4 ft	-
ASD-LSB2-185D50B-PRM	185W	120-277 V	1-10 V	24,420 lm	5,000 K	Bronze	16-15/16" x 11-15/16" x 4-1/16"	4 ft	-
ASD-LSB2-185D50B-SF	185W	120-277 V	1-10 V	24,420 lm	5,000 K	Bronze	25-1/4" x 11-15/16" x 4-1/16"	4 ft	Slip fitter
ASD-LSB2-185D50B-AR	185W	120-277 V	1-10 V	24,420 lm	5,000 K	Bronze	23-1/8" x 11-15/16" x 5-7/16"	4 ft	Arm
ASD-LSB2-240D50B-PRM	240W	120-277 V	1-10 V	31,680 lm	5,000 K	Bronze	23-1/2" x 11-15/16" x 4-1/16"	4 ft	-
ASD-LSB2-240D50B-SF	240W	120-277 V	1-10 V	31,680 lm	5,000 K	Bronze	31-7/8" x 11-15/16" x 4-1/16"	4 ft	Slip fitter
ASD-LSB2-240D50B-AR	240W	120-277 V	1-10 V	31,680 lm	5,000 K	Bronze	29-11/16" x 11-15/16" x 5-3/8"	4 ft	Arm
ASD-LSB2-300D40B-PRM	300W	120-277 V	1-10 V	39,600 lm	4,000 K	Bronze	23-1/2" x 11-15/16" x 4-1/16"	4 ft	-
ASD-LSB2-300D50W-PRM	300W	120-277 V	1-10 V	40,200 lm	5,000 K	White	23-1/2" x 11-15/16" x 4-1/16"	4 ft	-
ASD-LSB2-300D50-SL	300W	120-277 V	1-10 V	40,200 lm	5,000 K	Silver	23-1/2" x 11-15/16" x 4-1/16"	4 ft	-
ASD-LSB2-300D50B-PRM	300W	120-277 V	1-10 V	40,200 lm	5,000 K	Bronze	23-1/2" x 11-15/16" x 4-1/16"	4 ft	-
ASD-LSB2-300D50-BK	300W	120-277 V	1-10 V	40,200 lm	5,000 K	Black	23-1/2" x 11-15/16" x 4-1/16"	4 ft	-
ASD-LSB2-300D50B-SF	300W	120-277 V	1-10 V	40,200 lm	5,000 K	Bronze	31-7/8" x 11-15/16" x 4-1/16"	4 ft	Slip fitter
ASD-LSB2-300D50B-AR	300W	120-277 V	1-10 V	40,200 lm	5,000 K	Bronze	29-11/16" x 11-15/16" x 5-3/8"	4 ft	Arm
ASD-LSB2-400D50B-PRM	400W	120-277 V	0-10 V	66,097 lm	5,000 K	Bronze	30-1/4" x 13-3/8" x 4-5/8"	4 ft	-
ASD-LSB2-500D50B-PRM	500W	120-277 V	0-10 V	81,773 lm	5,000 K	Bronze	30-1/4" x 13-3/8" x 4-5/8"	4 ft	-
<b>LSB2-PC WITH PHOTOCELL</b>									
ASD-LSB2-100D50B-PC-PRM-SF	100W	120-277 V	1-10 V	13,277 lm	5,000 K	Bronze	25-3/16" x 11-7/8" x 7-1/4"	3 ft	Slip fitter

For most up-to-date spec sheets please refer to [asd-lighting.com](http://asd-lighting.com)



# LED AREA LIGHT

Model	Watts	Voltage	Dimmable	Lumens	CCT	Finish	Dimensions (LxWxH)	Cord	Bracket
<b>LSB2HV HIGH VOLTAGE</b>									
ASD-LSB2HV-100D50B-PRM	100W	277-480 V	0-10 V	13,400 lm	5,000 K	Bronze	16-15/16" x 11-15/16" x 4-1/16"	4 ft	-
ASD-LSB2HV-150D50W-PRM	150W	277-480 V	0-10 V	19,800 lm	5,000 K	White	16-15/16" x 11-15/16" x 4-1/16"	4 ft	-
ASD-LSB2HV-150D50B-PRM	150W	277-480 V	0-10 V	19,800 lm	5,000 K	Bronze	16-15/16" x 11-15/16" x 4-1/16"	4 ft	-
ASD-LSB2HV-185D50B-PRM	185W	277-480 V	0-10 V	24,420 lm	5,000 K	Bronze	16-15/16" x 11-15/16" x 4-1/16"	4 ft	-
ASD-LSB2HV-240D50B-PRM	240W	277-480 V	0-10 V	31,680 lm	5,000 K	Bronze	23-1/2" x 11-15/16" x 4-1/16"	4 ft	-
ASD-LSB2HV-300D50W-PRM	300W	277-480 V	0-10 V	40,200 lm	5,000 K	White	23-1/2" x 11-15/16" x 4-1/16"	4 ft	-
ASD-LSB2HV-300D50B-PRM	300W	277-480 V	0-10 V	40,200 lm	5,000 K	Bronze	23-1/2" x 11-15/16" x 4-1/16"	4 ft	-
ASD-LSB2HV-400D50B-PRM	400W	277-480 V	0-10 V	67,721 lm	5,000 K	Bronze	30-1/4" x 13-3/8" x 4-5/8"	4 ft	-
ASD-LSB2HV-500D50B-PRM	500W	277-480 V	0-10 V	83,403 lm	5,000 K	Bronze	30-1/4" x 13-3/8" x 4-5/8"	4 ft	-







## PRODUCT SPECIFICATIONS:

Construction & Materials									
Construction	Aluminum								
Lens	PC (60/100/150/185W - 1 lens, 240/300W - 2 lens, 400/500W - 3 lens)								
Finish	White, Silver, Bronze, Black								
Weight	ASD-LSB2-185D30B-PRM	8.1 lbs (3.7 kg)	ASD-LSB2-185D50W-PRM	9 lbs (4.1 kg)	ASD-LSB2-300D50B-SF	19.9 lbs (9 kg)			
	ASD-LSB2-60D50B-PRM		ASD-LSB2-185D50B-PRM		ASD-LSB2-300D50B-AR		18.4 lbs (8.3 kg)		
	ASD-LSB2-100D40B-PRM	8.8 lbs (4 kg)	ASD-LSB2-185D50B-SF	12.3 lbs (5.6 kg)	ASD-LSB2-400D50B-PRM	24.3 lbs (11 kg)			
	ASD-LSB2-100D50B-SF		ASD-LSB2-185D50B-AR		ASD-LSB2-100D50B-PC-PRM-SF		13 lbs (5.9 kg)		
	ASD-LSB2-100D50B-AR	10.6 lbs (4.8 kg)	ASD-LSB2-240D50B-PRM	15.5 lbs (7 kg)	ASD-LSB2HV-100D50B-PRM	9 lbs (4.1 kg)			
	ASD-LSB2-150D30B-PRM		ASD-LSB2-240D50B-SF		ASD-LSB2HV-150D50W-PRM				
	ASD-LSB2-150D40B-PRM	9 lbs (4.1 kg)	ASD-LSB2-240D50B-AR	17.3 lbs (7.8 kg)	ASD-LSB2HV-150D50B-PRM	15.5 lbs (7 kg)			
	ASD-LSB2-150D50W-PRM		ASD-LSB2-300D40B-PRM		ASD-LSB2HV-185D50B-PRM				
	ASD-LSB2-150D50B-SL		ASD-LSB2-300D50W-PRM		ASD-LSB2HV-240D50B-PRM				
	ASD-LSB2-150D50B-PRM		ASD-LSB2-300D50-SL		ASD-LSB2HV-300D50W-PRM				
	ASD-LSB2-150D50B-BK	12.3 lbs (5.6 kg)	ASD-LSB2-300D50B-PRM	16.6 lbs (7.5 kg)	ASD-LSB2HV-300D50B-PRM	16.6 lbs (7.5 kg)			
	ASD-LSB2-150D50B-SF		ASD-LSB2-300D50-BK		ASD-LSB2HV-400D50B-PRM				
ASD-LSB2-150D50B-AR	10.8 lbs (4.9 kg)			ASD-LSB2HV-500D50B-PRM	25.3 lbs (11.5 kg)				
Environmental system									
Work environment	Suitable for Wet Locations, IP66								
Operating temperature	-40°F to 140°F (-40°C to 60°C) for ASD-LSB2-400D50B-PRM, ASD-LSB2-500D50B-PRM, ASD-LSB2-100D50B-PC-PRM-SF, ASD-LSB2HV-400D50B-PRM, ASD-LSB2HV-500D50B-PRM models: -40°F to 122°F (-40°C to 50°C)								
L-70 Life	R > 72,000 hrs; C > 146,000 hrs for ASD-LSB2-400D50B-PRM, ASD-LSB2-500D50B-PRM, ASD-LSB2-100D50B-PC-PRM-SF, ASD-LSB2HV-400D50B-PRM, ASD-LSB2HV-500D50B-PRM models: R > 54,000 hrs; C > 163,000 hrs								
Optical system									
Luminous flux	ASD-LSB2-60D50W-PRM	8,520 lm	ASD-LSB2-185D30B-PRM	24,050 lm	ASD-LSB2-300D50B-SF	40,200 lm			
	ASD-LSB2-60D50B-PRM		ASD-LSB2-185D50W-PRM		ASD-LSB2-300D50B-AR				
	ASD-LSB2-100D40B-PRM	13,200 lm	ASD-LSB2-185D50B-PRM	24,420 lm	ASD-LSB2-400D50B-PRM	66,097 lm			
	ASD-LSB2-100D50B-PRM		ASD-LSB2-185D50B-SF		ASD-LSB2-500D50B-PRM		81,773 lm		
	ASD-LSB2-100D50B-SF	13,400 lm	ASD-LSB2-185D50B-AR	31,680 lm	ASD-LSB2-100D50B-PC-PRM-SF	13,277 lm			
	ASD-LSB2-100D50B-AR		ASD-LSB2-240D50B-PRM		ASD-LSB2HV-100D50B-PRM		13,400 lm		
	ASD-LSB2-150D30B-PRM	19,500 lm	ASD-LSB2-240D50B-SF	39,600 lm	ASD-LSB2HV-150D50W-PRM	19,800 lm			
	ASD-LSB2-150D40B-PRM		ASD-LSB2-240D50B-AR		ASD-LSB2HV-150D50B-PRM				
	ASD-LSB2-150D50W-PRM	19,800 lm	ASD-LSB2-300D40B-PRM	40,200 lm	ASD-LSB2HV-185D50B-PRM	24,420 lm			
	ASD-LSB2-150D50B-SL		ASD-LSB2-300D50W-PRM		ASD-LSB2HV-240D50B-PRM		31,680 lm		
	ASD-LSB2-150D50B-PRM		ASD-LSB2-300D50-SL		ASD-LSB2HV-300D50W-PRM		40,200 lm		
	ASD-LSB2-150D50-BK		ASD-LSB2-300D50B-PRM		ASD-LSB2HV-300D50B-PRM		40,200 lm		
ASD-LSB2-150D50B-SF	19,800 lm	ASD-LSB2-300D50-BK	40,200 lm	ASD-LSB2HV-400D50B-PRM	67,721 lm				
ASD-LSB2-150D50B-AR		ASD-LSB2HV-500D50B-PRM		83,403 lm					
Color temperature	3,000 K; 4,000 K; 5,000 K								
CRI	> 80 for ASD-LSB2-400D50B-PRM, ASD-LSB2-500D50B-PRM, ASD-LSB2HV-400D50B-PRM, ASD-LSB2HV-500D50B-PRM models: > 70								
Electrical system									
Input voltage	Regular voltage: 120-277 V High voltage: 277-480 V								
Max input current	ASD-LSB2-60D50W-PRM	0.7 A	ASD-LSB2-185D30B-PRM	2.1 A	ASD-LSB2-300D50B-SF	3.4 A			
	ASD-LSB2-60D50B-PRM		ASD-LSB2-185D50W-PRM		ASD-LSB2-300D50B-AR				
	ASD-LSB2-100D40B-PRM	1.2 A	ASD-LSB2-185D50B-PRM	2.7 A	ASD-LSB2-400D50B-PRM	2.6 A			
	ASD-LSB2-100D50B-PRM		ASD-LSB2-185D50B-SF		ASD-LSB2-500D50B-PRM				
	ASD-LSB2-100D50B-SF	1.7 A	ASD-LSB2-185D50B-AR	3.4 A	ASD-LSB2-100D50B-PC-PRM-SF	0.83 A			
	ASD-LSB2-100D50B-AR		ASD-LSB2-240D50B-PRM		ASD-LSB2HV-100D50B-PRM		0.4 A		
	ASD-LSB2-150D30B-PRM	1.7 A	ASD-LSB2-240D50B-SF	2.7 A	ASD-LSB2HV-150D50W-PRM	0.6 A			
	ASD-LSB2-150D40B-PRM		ASD-LSB2-240D50B-AR		ASD-LSB2HV-150D50B-PRM				
	ASD-LSB2-150D50W-PRM		ASD-LSB2-300D40B-PRM		ASD-LSB2HV-185D50B-PRM		0.8 A		
	ASD-LSB2-150D50B-SL		ASD-LSB2-300D50W-PRM		ASD-LSB2HV-240D50B-PRM		1 A		
	ASD-LSB2-150D50B-PRM	1.7 A	ASD-LSB2-300D50-SL	3.4 A	ASD-LSB2HV-300D50W-PRM	1.2 A			
	ASD-LSB2-150D50B-BK		ASD-LSB2-300D50B-PRM		ASD-LSB2HV-300D50B-PRM				
ASD-LSB2-150D50B-SF	ASD-LSB2-300D50-BK		ASD-LSB2HV-400D50B-PRM						
ASD-LSB2-150D50B-AR	ASD-LSB2HV-500D50B-PRM		1.8 A						

For most up-to-date spec sheets please refer to [asd-lighting.com](http://asd-lighting.com)



# LED AREA LIGHT

Electrical system						
Inrush current (Action time)	ASD-LSB2-60D50W-PRM	80 A (0.75 S)	ASD-LSB2-185D30B-PRM	130 A (0.75 S)	ASD-LSB2-300D50B-SF	130 A (0.75 S)
	ASD-LSB2-60D50B-PRM		ASD-LSB2-185D50W-PRM		ASD-LSB2-300D50B-AR	
	ASD-LSB2-100D40B-PRM	100 A (0.75 S)	ASD-LSB2-185D50B-PRM		ASD-LSB2-400D50B-PRM	80 A (0.35 S)
	ASD-LSB2-100D50B-PRM		ASD-LSB2-185D50B-SF		ASD-LSB2-500D50B-PRM	
	ASD-LSB2-100D50B-SF	130 A (0.75 S)	ASD-LSB2-185D50B-AR		ASD-LSB2-100D50B-PC-PRM-SF	0.16 A (0.2 S)
	ASD-LSB2-100D50B-AR		ASD-LSB2-240D50B-PRM		ASD-LSB2HV-100D50B-PRM	
	ASD-LSB2-150D30B-PRM		ASD-LSB2-240D50B-SF		ASD-LSB2HV-150D50W-PRM	55 A (0.75 S)
	ASD-LSB2-150D40B-PRM		ASD-LSB2-240D50B-AR		ASD-LSB2HV-150D50B-PRM	
	ASD-LSB2-150D50W-PRM	130 A (0.75 S)	ASD-LSB2-300D40B-PRM		ASD-LSB2HV-185D50B-PRM	90 A (0.75 S)
	ASD-LSB2-150D50B-SL		ASD-LSB2-300D50W-PRM		ASD-LSB2HV-240D50B-PRM	
	ASD-LSB2-150D50B-PRM		ASD-LSB2-300D50-SL		ASD-LSB2HV-300D50W-PRM	
	ASD-LSB2-150D50B-BK		ASD-LSB2-300D50B-PRM		ASD-LSB2HV-300D50B-PRM	
	ASD-LSB2-150D50B-SF		ASD-LSB2-300D50-BK		ASD-LSB2HV-400D50B-PRM	90 A (0.58 S)
	ASD-LSB2-150D50B-AR				ASD-LSB2HV-500D50B-PRM	
Off state power	0W					
Power consumption	ASD-LSB2-60D50W-PRM	60W	ASD-LSB2-185D30B-PRM	185W	ASD-LSB2-300D50B-SF	300W
	ASD-LSB2-60D50B-PRM		ASD-LSB2-185D50W-PRM		ASD-LSB2-300D50B-AR	
	ASD-LSB2-100D40B-PRM	100W	ASD-LSB2-185D50B-PRM		ASD-LSB2-400D50B-PRM	400W
	ASD-LSB2-100D50B-PRM		ASD-LSB2-185D50B-SF		ASD-LSB2-500D50B-PRM	
	ASD-LSB2-100D50B-SF	150W	ASD-LSB2-185D50B-AR		ASD-LSB2-100D50B-PC-PRM-SF	100W
	ASD-LSB2-100D50B-AR		ASD-LSB2-240D50B-PRM		ASD-LSB2HV-100D50B-PRM	
	ASD-LSB2-150D30B-PRM		ASD-LSB2-240D50B-SF		ASD-LSB2HV-150D50W-PRM	150W
	ASD-LSB2-150D40B-PRM		ASD-LSB2-240D50B-AR		ASD-LSB2HV-150D50B-PRM	
	ASD-LSB2-150D50W-PRM	150W	ASD-LSB2-300D40B-PRM		ASD-LSB2HV-185D50B-PRM	185W
	ASD-LSB2-150D50B-SL		ASD-LSB2-300D50W-PRM		ASD-LSB2HV-240D50B-PRM	
	ASD-LSB2-150D50B-PRM		ASD-LSB2-300D50-SL		ASD-LSB2HV-300D50W-PRM	
	ASD-LSB2-150D50B-BK		ASD-LSB2-300D50B-PRM		ASD-LSB2HV-300D50B-PRM	
	ASD-LSB2-150D50B-SF		ASD-LSB2-300D50-BK		ASD-LSB2HV-400D50B-PRM	400W
	ASD-LSB2-150D50B-AR				ASD-LSB2HV-500D50B-PRM	
Power factor	> 0.9					
Output voltage	ASD-LSB2-60D50W-PRM	90-130 V	ASD-LSB2-185D30B-PRM	180-260 V	ASD-LSB2-300D50B-SF	180-260 V
	ASD-LSB2-60D50B-PRM		ASD-LSB2-185D50W-PRM		ASD-LSB2-300D50B-AR	
	ASD-LSB2-100D40B-PRM		ASD-LSB2-185D50B-PRM		ASD-LSB2-400D50B-PRM	238 V
	ASD-LSB2-100D50B-PRM		ASD-LSB2-185D50B-SF		ASD-LSB2-500D50B-PRM	
	ASD-LSB2-100D50B-SF		ASD-LSB2-185D50B-AR		ASD-LSB2-100D50B-PC-PRM-SF	58 V
	ASD-LSB2-100D50B-AR		ASD-LSB2-240D50B-PRM		ASD-LSB2HV-100D50B-PRM	
	ASD-LSB2-150D30B-PRM	ASD-LSB2-240D50B-SF	ASD-LSB2HV-150D50W-PRM		22-56 V	
	ASD-LSB2-150D40B-PRM	ASD-LSB2-240D50B-AR	ASD-LSB2HV-150D50B-PRM			
	ASD-LSB2-150D50W-PRM	180-260 V	ASD-LSB2-300D40B-PRM		ASD-LSB2HV-185D50B-PRM	22-56 V
	ASD-LSB2-150D50B-SL		ASD-LSB2-300D50W-PRM		ASD-LSB2HV-240D50B-PRM	
	ASD-LSB2-150D50B-PRM		ASD-LSB2-300D50-SL		ASD-LSB2HV-300D50W-PRM	
	ASD-LSB2-150D50B-BK		ASD-LSB2-300D50B-PRM		ASD-LSB2HV-300D50B-PRM	
	ASD-LSB2-150D50B-SF		ASD-LSB2-300D50-BK		ASD-LSB2HV-400D50B-PRM	238 V
	ASD-LSB2-150D50B-AR				ASD-LSB2HV-500D50B-PRM	
Max output current	ASD-LSB2-60D50W-PRM	0.3 A	ASD-LSB2-185D30B-PRM	0.79 A	ASD-LSB2-300D50B-SF	1.26 A
	ASD-LSB2-60D50B-PRM		ASD-LSB2-185D50W-PRM		ASD-LSB2-300D50B-AR	
	ASD-LSB2-100D40B-PRM	0.82 A	ASD-LSB2-185D50B-PRM		ASD-LSB2-400D50B-PRM	1.57 A
	ASD-LSB2-100D50B-PRM		ASD-LSB2-185D50B-SF		ASD-LSB2-500D50B-PRM	
	ASD-LSB2-100D50B-SF	2.7 A	ASD-LSB2-185D50B-AR		ASD-LSB2-100D50B-PC-PRM-SF	1.72 A
	ASD-LSB2-100D50B-AR		ASD-LSB2-240D50B-PRM		ASD-LSB2HV-100D50B-PRM	
	ASD-LSB2-150D30B-PRM		ASD-LSB2-240D50B-SF		ASD-LSB2HV-150D50W-PRM	3 A
	ASD-LSB2-150D40B-PRM		ASD-LSB2-240D50B-AR		ASD-LSB2HV-150D50B-PRM	
	ASD-LSB2-150D50W-PRM	0.63 A	ASD-LSB2-300D40B-PRM		ASD-LSB2HV-185D50B-PRM	3.7 A
	ASD-LSB2-150D50B-SL		ASD-LSB2-300D50W-PRM		ASD-LSB2HV-240D50B-PRM	
	ASD-LSB2-150D50B-PRM		ASD-LSB2-300D50-SL		ASD-LSB2HV-300D50W-PRM	
	ASD-LSB2-150D50B-BK		ASD-LSB2-300D50B-PRM		ASD-LSB2HV-300D50B-PRM	
	ASD-LSB2-150D50B-SF		ASD-LSB2-300D50-BK		ASD-LSB2HV-400D50B-PRM	6 A
	ASD-LSB2-150D50B-AR				ASD-LSB2HV-500D50B-PRM	
Surge protection DM/CM	Regular voltage: 10 kV / 10 kV for ASD-LSB2-400D50B-PRM, ASD-LSB2-500D50B-PRM models: 6 kV / 6 kV		for 60W models: 4 kV / 6 kV for ASD-LSB2-100D50B-PC-PRM-SF model: High voltage: 6 kV / 10 kV			
Effective projected area (EPA) ratings						
Fixture q-ty						
	Single	Double 180°	Double 90°	Triple 90°	Triple 120°	Quad 90°
EPA of 60/100/150/185W	0.23	0.46	0.4	0.63	0.73	0.73
EPA of 240/300W	0.42	0.84	0.72	1.14	1.54	1.54
EPA of 400/500W	0.58	1.16	1	1.58	2.13	2.13
Dimming compatible controls						
Brand	Maxxima	Keygma	Leviton	Lutron	Eaton	
Models	MEW-DM600LV	KGM-1A010V	IP710-DLZ	DVSTV-WH	DF10P-C1	

For most up-to-date spec sheets please refer to [asd-lighting.com](http://asd-lighting.com)



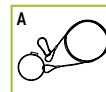
# LED AREA LIGHT

### Regular and voluntary certifications

5-year limited warranty  
 DesignLights Consortium (DLC) listed (Classification: Premium) Main: Outdoor luminaires;  
 General application: Mid/High/Very high output (Very high output for models from 240W and higher);  
 Primary use: Outdoor pole/arm-mounted area and roadway luminaires  
 UL certified E473804

### PACKAGE CONTENTS:

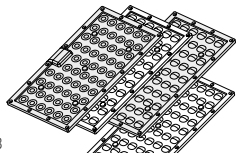
Description	Q-ty
LED Area Light	1
Safety cable (A) only for 400W/500W models	1
Box	1



### ACCESSORIES (sold separately):

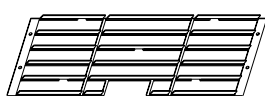
#### Clear lens

**Floodlight distribution 30°**  
 ASD-LFL-LSB  
**type II-M**  
 ASD-L2M-LSB  
**type IV-M**    **type V-M**  
 ASD-L4M-LSB    ASD-L5M-LSB



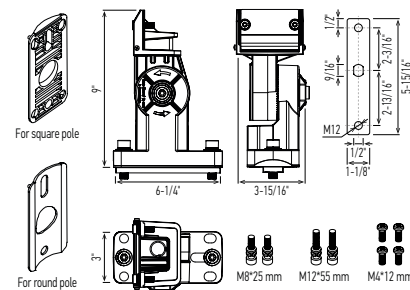
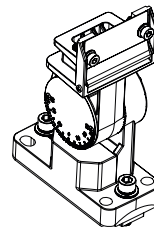
#### 90° Spill shield

ASD-SLD5-LSB2-BR



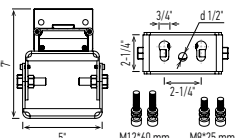
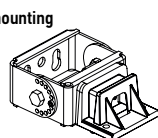
#### Adjustable arm mounting bracket

ASD-AMR-LSB2-BR



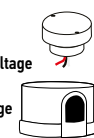
#### Full trunnion mounting bracket

ASD-TR-LSB2-WH  
 ASD-TR-LSB2-SL  
 ASD-TR-LSB2-BR  
 ASD-TR-LSB2-BK



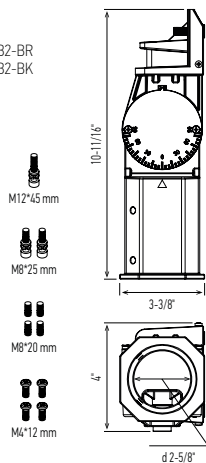
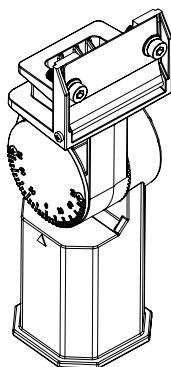
#### Photocell kit

for regular voltage  
 ASD-PC-LSB  
 for high voltage  
 ASD-PC-LSBHV

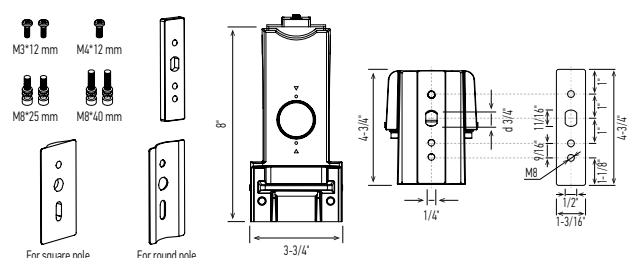
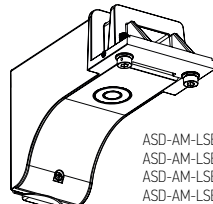


#### Slip fitter bracket

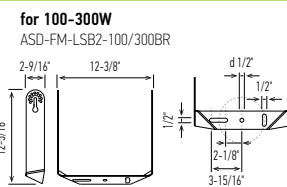
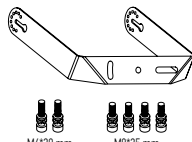
ASD-SF-LSB2-WH    ASD-SF-LSB2-BR  
 ASD-SF-LSB2-SL    ASD-SF-LSB2-BK



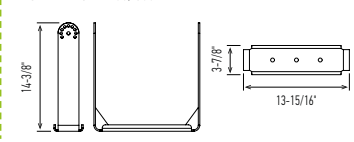
#### Arm mounting bracket for round and square poles



#### Floodlight mounting bracket



#### for 400-500W





# LED AREA LIGHT

## ACCESSORY COMPATIBILITY LIST:

Accessories		Model											
		Photocell kit ASD-PC-LSB	Photocell kit for high voltage ASD-PC-LSBHV	Clear lens ASD-LFL-LSB ASD-L2M-LSB ASD-L4M-LSB ASD-L5M-LSB	Full trunion mounting bracket ASD-TR-LSB2-WH ASD-TR-LSB2-SL ASD-TR-LSB2-BR ASD-TR-LSB2-BK	Slip fitter bracket ASD-SF-LSB2-WH ASD-SF-LSB2-SL ASD-SF-LSB2-BR ASD-SF-LSB2-BK	Arm mounting bracket ASD-AM-LSB2-WH ASD-AM-LSB2-SL ASD-AM-LSB2-BR ASD-AM-LSB2-BK	Adjustable arm mounting bracket ASD-AMR-LSB2-BR	Floodlight mounting bracket ASD-FM-LSB2-100/300BR	Floodlight mounting bracket ASD-FM-LSB2-400/500BR	90° Spill shield ASD-SLD5-LSB2-BR		
ASD-LSB2	60W white	•		•	•	•	•	•	•				
	60W bronze	•		•	•	•	•	•	•				•
	100W bronze	•		•	•	•	•	•	•				•
	150W white	•		•	•	•	•	•	•				
	150W silver	•		•	•	•	•	•	•				
	150W bronze	•		•	•	•	•	•	•				•
	150W black	•		•	•	•	•	•	•				
	185W white	•		•	•	•	•	•	•				
	185W bronze	•		•	•	•	•	•	•				•
	240W bronze	•		•	•	•	•	•	•				•
	300W white	•		•	•	•	•	•	•				
	300W silver	•		•	•	•	•	•	•				
	300W bronze	•		•	•	•	•	•	•				•
	300W black	•		•	•	•	•	•	•				•
400W bronze	•		•	•	•	•	•	•			•	•	
500W bronze	•		•	•	•	•	•	•			•	•	
ASD-LSB2-PC	100W bronze		•	•	•	•	•	•	•		•	•	•
ASD-LSB2HV	100W bronze		•	•	•	•	•	•	•		•	•	•
	150W white		•	•	•	•	•	•	•		•	•	•
	150W bronze		•	•	•	•	•	•	•		•	•	•
	185W bronze		•	•	•	•	•	•	•		•	•	•
	240W bronze		•	•	•	•	•	•	•		•	•	•
	300W white		•	•	•	•	•	•	•		•	•	•
	300W bronze		•	•	•	•	•	•	•		•	•	•
	400W bronze		•	•	•	•	•	•	•		•	•	•
500W bronze		•	•	•	•	•	•	•		•	•	•	

For most up-to-date spec sheets please refer to [asd-lighting.com](http://asd-lighting.com)



# LED AREA LIGHT

## INSTALLATION GUIDE

### IMPORTANT SAFETY INFORMATION:

Please read all the instructions below before installation.

- ▶ Make sure that the supply voltage corresponds to the rated product voltage.
- ▶ The product must be installed by a qualified electrician in accordance with the National Electrical Code and corresponding local codes.
- ▶ If the product is damaged, do not use it.

### ⚠ WARNING

**RISK OF PERSONAL INJURY – READ and follow all WARNINGS and installation instructions.** Keep or give to the owner for future reference.

**Risk of cuts:** Wear gloves to prevent cuts or abrasions when removing from carton, handling, installing, and maintaining this product.

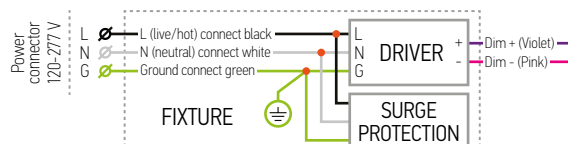
**Risk of electric shock:** This product must be installed in accordance with the applicable installation code by a person familiar with the construction and operation of the product and the hazards involved.

**Risk of Fire:** Minimum 194°F supply conductors. Consult a qualified electrician to ensure correct branch circuit conductor.

ASD® assumes no responsibility for claims arising out of improper or careless installation or handling of this product.

### ELECTRICAL SCHEMATIC DIAGRAM:

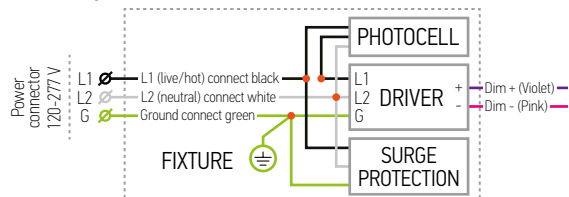
#### LSB2



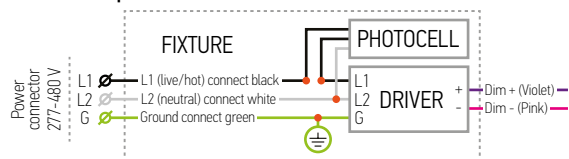
#### LSB2HV



#### LSB2 with photocell kit



#### LSB2HV with photocell kit



\* The regular voltage 120-277 V fixtures can be alternatively powered without neutral by two-phase circuit with phase-to-phase voltage of 208 V (L1-120 V & L2-120 V).  
**WARNING:** Phase-to-phase voltage should be less than 277 V (160 V per each phase) and more than 120 V (70 V per each phase)! Do not confuse Regular Voltage fixtures of 120-277 V with High Voltage ones of 277-480 V!

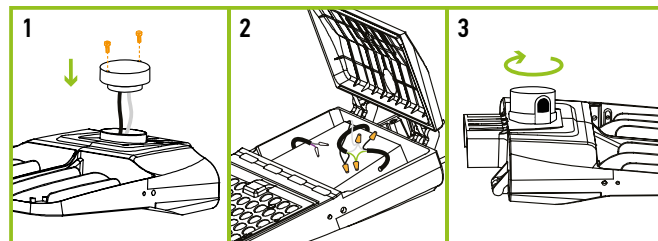
### PHOTOCELL KIT

ASD-PC-LSB

ASD-PC-LSBHV

sold separately:

1. Power off before installation. Use a screwdriver to take off the circular plate (2 screws). Screw the photocell base on the top of the fixture, pull the wires through the driver box.
2. Use a screwdriver to open the driver box (2 screws). Connect the wires Black to Black, White to White and Red to Load.
3. Firmly place the photocell into the receptacle base and twist it clockwise until it locks into place.



### LENS

ASD-LFL-LSB

ASD-L2M-LSB

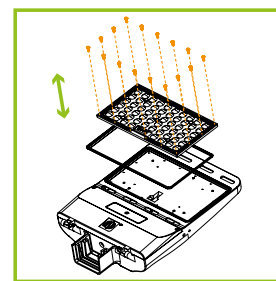
ASD-L4M-LSB

ASD-L5M-LSB

sold separately:

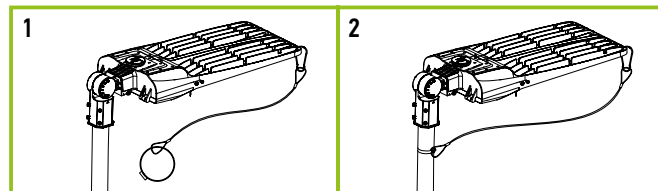
1. Unscrew the 16 screws of the original lens (T3-M) on the housing.
2. Install the rubber ring on new lens (T4/T5-M, sold separately).
3. Place the lens on the housing and make sure it fits the LEDs correctly.
4. Tighten the 16 screws back.

Lens	
60W, 100W, 150W, 185W	1 lens
240W, 300W	2 lens
400W, 500W	3 lens



### SAFETY CABLE:

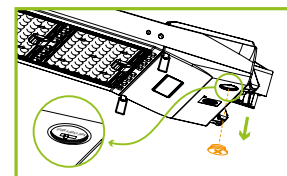
1. Attach one end of the included safety cable through the hole between the fins on the luminaire.
2. Ensure the safety cable is secured on the fixture. Secure the other end of the safety cable to the mounting structure/pole.



Safety cable for 400W/500W models only

### COLOR TEMPERATURE SETTINGS:

Open knockout cap in the front panel of the fixture and choose color temperature you need with the simple switch. Then close the knockout cap back.



For most up-to-date spec sheets please refer to [asd-lighting.com](http://asd-lighting.com)

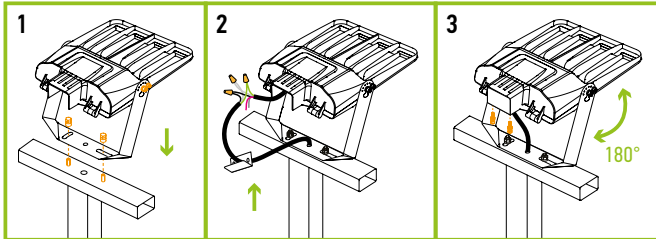


# LED AREA LIGHT

## FLOODLIGHT MOUNTING BRACKET

**ASD-FM-LSB2** sold separately:

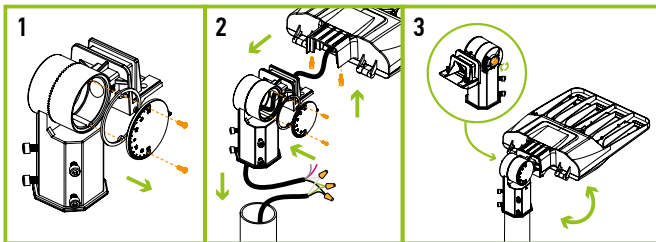
1. Drill holes on the mounting surface corresponding to the holes in the arm. Attach fixture to bracket with 2 screws and bracket to surface with 2 screws.
2. Wire in accordance to the wiring schematic.
3. Seal the connections with the back plate of the fixture. Adjust fixture angle as needed.



## SLIP FITTER MOUNTING BRACKET

**ASD-SF-LSB2** sold separately:

1. Remove the circular plate from the slip fitter (2 screws).
2. Thread the wire through the slip fitter into the pole. Make AC connections in accordance to wiring diagram.
3. If necessary adjust the fixture angle with the large hex bolt on the side of the slip fitter.

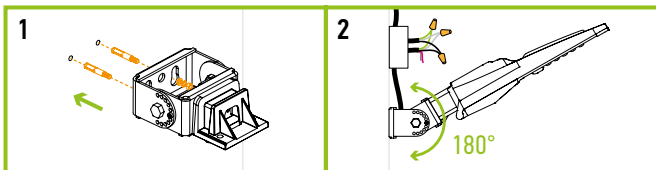


The wiring is inside the pole, the side is sealed with a rubber ring and fixed with screws, preventing water from getting inside the fixture.

## FULL TRUNNION MOUNTING BRACKET

**ASD-TR-LSB2** sold separately:

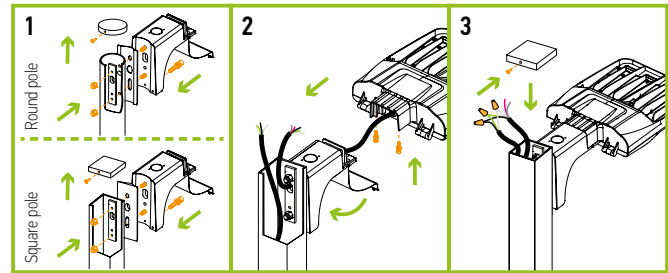
1. Drill holes on the mounting surface, size corresponding to the holes on the arm. Fix the bracket on the wall with screws. Pull wires through mount, secure fixture to the bracket.
2. Wire the AC power into the water tight junction box as shown in the wiring schematic diagram. Adjust the screw position to get desired angle when necessary.



## ARM MOUNTING BRACKET **ASD-AM-LSB2**

sold separately:

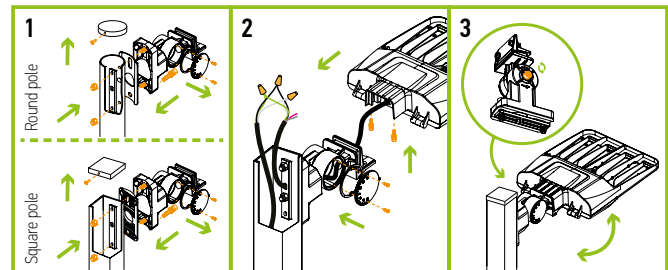
1. Open up the door on the arm bracket (1 screw). Install the mounting arm onto the pole (2 bolts). Make sure the silicone gaskets form a tight seal. Choose gasket depending on the shape of the pole (round or flat).
2. Thread the cord from the fixture through the bracket into the pole and tighten the two M8 screws on the body of the light.
3. Pass the AC wire through the base and tighten the two screws on the body of the fixture.



## ADJUSTABLE ARM MOUNTING BRACKET

**ASD-AMR-LSB2-BR** sold separately:

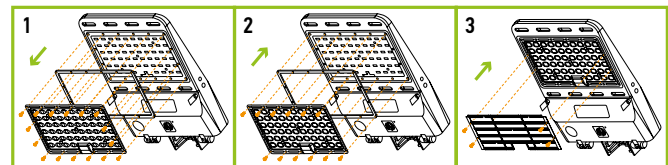
1. Open up the door on the arm bracket (1 screw). Install the mounting arm onto the pole (2 bolts). Make sure the silicone gaskets form a tight seal. Choose gasket depending on the shape of the pole (round or flat).
2. Thread the cord from the fixture through the bracket into the pole and tighten the two M8 screws on the body of the light.
3. Pass the AC wire through the base and tighten the two screws on the body of the bracket. If necessary adjust the fixture angle with the large hex bolt on the side of the bracket.



## SPILL SHIELD INSTALLATION

**ASD-SLD5-LSB2-BR** sold separately:

1. Unscrew 16 screw and de attach the default lens. Remove waterproof gasket from it.
2. Install T5 lens (not included) instead of default lens, using waterproof gasket. Secure it with 12 screws, except the four screws located in both left and right sides, two on each side.
3. Attach the shield and secure it with the remaining four screws.



For most up-to-date spec sheets please refer to [asd-lighting.com](http://asd-lighting.com)



# LED AREA LIGHT

## ORDERING INFORMATION

Model	Pcs. per carton	Carton size	Carton weight	UPC
ASD-LSB2-60D50W-PRM	1	19.1" x 13.4" x 6.1"	9.9 lbs	810050732710
ASD-LSB2-60D50B-PRM	1	19.1" x 13.4" x 6.1"	9.9 lbs	819201026920
ASD-LSB2-100D40B-PRM	1	19.1" x 13.4" x 6.1"	10.2 lbs	810050733342
ASD-LSB2-100D50B-PRM	1	19.1" x 13.4" x 6.1"	10.2 lbs	819201026449
ASD-LSB2-100D50B-SF	1	25.9" x 15.4" x 6.1"	13.5 lbs	810050735568
ASD-LSB2-100D50B-AR	1	25.9" x 15.4" x 6.1"	12 lbs	810050735612
ASD-LSB2-150D30B-PRM	1	19.1" x 13.4" x 6.1"	10.3 lbs	810050730198
ASD-LSB2-150D40B-PRM	1	19.1" x 13.4" x 6.1"	10.3 lbs	810050733359
ASD-LSB2-150D50W-PRM	1	19.1" x 13.4" x 6.1"	10.3 lbs	810050732727
ASD-LSB2-150D50-SL	1	19.1" x 13.4" x 6.1"	10.3 lbs	810050736954
ASD-LSB2-150D50B-PRM	1	19.1" x 13.4" x 6.1"	10.3 lbs	819201026456
ASD-LSB2-150D50-BK	1	19.1" x 13.4" x 6.1"	10.3 lbs	810050736947
ASD-LSB2-150D50B-SF	1	25.9" x 15.4" x 6.1"	13.6 lbs	810050735575
ASD-LSB2-150D50B-AR	1	25.9" x 15.4" x 6.1"	12.1 lbs	810050735629
ASD-LSB2-185D30B-PRM	1	19.1" x 13.4" x 6.1"	10.3 lbs	810050730204
ASD-LSB2-185D50W-PRM	1	19.1" x 13.4" x 6.1"	10.3 lbs	810050732734
ASD-LSB2-185D50B-PRM	1	19.1" x 13.4" x 6.1"	10.3 lbs	819201026463
ASD-LSB2-185D50B-SF	1	25.9" x 15.4" x 6.1"	13.6 lbs	810050735582
ASD-LSB2-185D50B-AR	1	25.9" x 15.4" x 6.1"	12.1 lbs	810050735636
ASD-LSB2-240D50B-PRM	1	25.7" x 13.4" x 6.1"	17 lbs	819201026470
ASD-LSB2-240D50B-SF	1	32.4" x 15.4" x 6.1"	20.4 lbs	810050735599
ASD-LSB2-240D50B-AR	1	32.4" x 15.4" x 6.1"	18.8 lbs	810050735643
ASD-LSB2-300D40B-PRM	1	25.7" x 13.4" x 6.1"	18.1 lbs	810050733366
ASD-LSB2-300D50W-PRM	1	25.7" x 13.4" x 6.1"	18.1 lbs	810050732741
ASD-LSB2-300D50-SL	1	25.7" x 13.4" x 6.1"	18.1 lbs	810050736978
ASD-LSB2-300D50B-PRM	1	25.7" x 13.4" x 6.1"	18.1 lbs	819201026487
ASD-LSB2-300D50-BK	1	25.7" x 13.4" x 6.1"	18.1 lbs	810050736961
ASD-LSB2-300D50B-SF	1	32.4" x 15.4" x 6.1"	21.5 lbs	810050735605
ASD-LSB2-300D50B-AR	1	32.4" x 15.4" x 6.1"	19.9 lbs	810050735650
ASD-LSB2-400D50B-PRM	1	31.7" x 15.6" x 7.1"	26.7 lbs	819201026494
ASD-LSB2-500D50B-PRM	1	31.7" x 15.6" x 7.1"	26.7 lbs	819201026517
<b>LSB2-PC WITH PHOTOCCELL</b>				
ASD-LSB2-100D50B-PC-PRM-SF	1	18" x 13.7" x 6.5"	13.7 lbs	810050733458
<b>LSB2HV HIGH VOLTAGE</b>				
ASD-LSB2HV-100D50B-PRM	1	19.1" x 13.4" x 6.1"	10.3 lbs	810050730358
ASD-LSB2HV-150D50W-PRM	1	19.1" x 13.4" x 6.1"	10.3 lbs	810050732765
ASD-LSB2HV-150D50B-PRM	1	19.1" x 13.4" x 6.1"	10.3 lbs	819201027392
ASD-LSB2HV-185D50B-PRM	1	19.1" x 13.4" x 6.1"	10.3 lbs	819201027408
ASD-LSB2HV-240D50B-PRM	1	25.7" x 13.4" x 6.1"	17 lbs	810050730228
ASD-LSB2HV-300D50W-PRM	1	25.7" x 13.4" x 6.1"	18.1 lbs	810050732789
ASD-LSB2HV-300D50B-PRM	1	25.7" x 13.4" x 6.1"	18.1 lbs	819201026821
ASD-LSB2HV-400D50B-PRM	1	31.7" x 15.6" x 7.1"	27.8 lbs	819201026838
ASD-LSB2HV-500D50B-PRM	1	31.7" x 15.6" x 7.1"	27.8 lbs	819201026845

## ACCESSORIES:

Model	Description	UPC	Pcs. per carton	Carton size	Carton weight	GTIN 14
ASD-SF-LSB2-WH	Slip fitter mounting bracket white	810050738019	10	18.4" x 9.3" x 11.8"	35.1 lbs	10810050738016
ASD-SF-LSB2-SL	Slip fitter mounting bracket silver	810050738163	10	18.4" x 9.3" x 11.8"	35.1 lbs	10810050738160
ASD-SF-LSB2-BR	Slip fitter mounting bracket bronze	810050738002	10	18.4" x 9.3" x 11.8"	35.1 lbs	10810050738009
ASD-SF-LSB2-BK	Slip fitter mounting bracket black	810050738156	10	18.4" x 9.3" x 11.8"	35.1 lbs	10810050738153
ASD-AM-LSB2-WH	Arm mounting bracket white	810050738187	10	21.4" x 10.8" x 9.8"	20.3 lbs	10810050738184
ASD-AM-LSB2-SL	Arm mounting bracket silver	810050738200	10	21.4" x 10.8" x 9.8"	20.3 lbs	10810050738207
ASD-AM-LSB2-BR	Arm mounting bracket bronze	810050738170	10	21.4" x 10.8" x 9.8"	20.3 lbs	10810050738177
ASD-AM-LSB2-BK	Arm mounting bracket black	810050738194	10	21.4" x 10.8" x 9.8"	20.3 lbs	10810050738191
ASD-AMR-LSB2-BR	Adjustable arm mounting bracket	810050738217	10	21.4" x 9.6" x 13.4"	30.9 lbs	10810050738214
ASD-TR-LSB2-WH	Full trunnion mounting bracket white	810050737999	10	14.5" x 14" x 8.2"	31.7 lbs	10810050737996
ASD-TR-LSB2-SL	Full trunnion mounting bracket silver	810050738248	10	14.5" x 14" x 8.2"	31.7 lbs	10810050738245
ASD-TR-LSB2-BR	Full trunnion mounting bracket bronze	810050738224	10	14.5" x 14" x 8.2"	31.7 lbs	10810050738221
ASD-TR-LSB2-BK	Full trunnion mounting bracket black	810050738231	10	14.5" x 14" x 8.2"	31.7 lbs	10810050738238
ASD-FM-LSB2-100/300BR	Floodlight mounting bracket for 100-300W	810050738255	10	26" x 16.1" x 13.4"	32 lbs	10810050738252
ASD-FM-LSB2-400/500BR	Floodlight mounting bracket for 400-500W	810050738262	5	15.4" x 14.9" x 20.5"	61.3 lbs	20810050738266
ASD-PC-LSB	Photocell kit	819201023622	100	17.4" x 17.4" x 19.8"	52.9 lbs	10819201023629
ASD-PC-LSBHV	Photocell kit for high voltage	819201023646	24	23.2" x 15.7" x 6.3"	13.1 lbs	10819201023643
ASD-LFL-LSB	Clear lens 30" floodlight distribution	810050737098	50	20.6" x 11.5" x 6.7"	29.1 lbs	10810050737095
ASD-L2M-LSB	Clear lens type II-M	810050731508	50	20.6" x 11.5" x 6.7"	22.5 lbs	10810050731505
ASD-L4M-LSB	Clear lens type IV-M	819201023844	50	20.6" x 11.5" x 6.7"	26.9 lbs	10819201023841
ASD-L5M-LSB	Clear lens type V-M	819201023851	50	20.6" x 11.5" x 6.7"	23.6 lbs	10819201023858
ASD-SLD5-LSB2-BR	90° Spill shield	810128110297	50	12.2" x 12.2" x 6.9"	24.3 lbs	10810128110294

For most up-to-date spec sheets please refer to [asd-lighting.com](http://asd-lighting.com)

ASD LIGHTING CORP

E-mail: [orders@asd-lighting.com](mailto:orders@asd-lighting.com) | Web site: [www.asd-lighting.com](http://www.asd-lighting.com)

