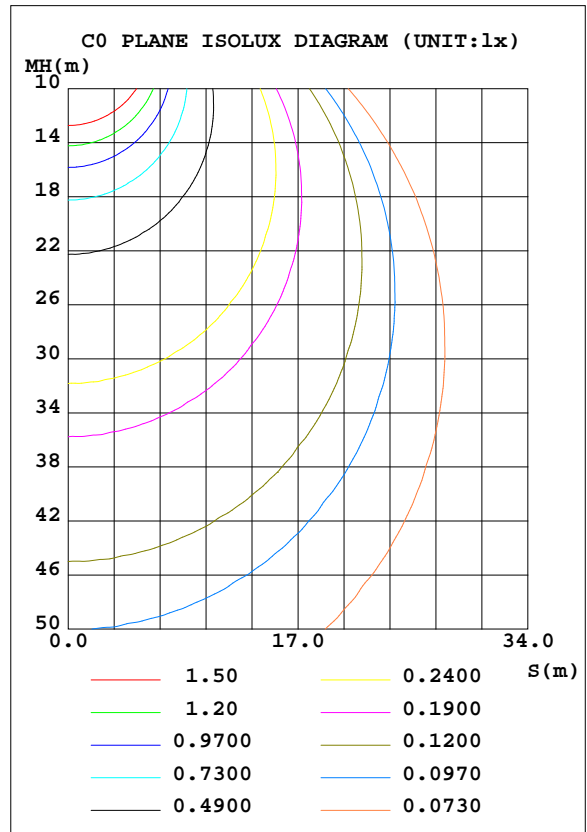
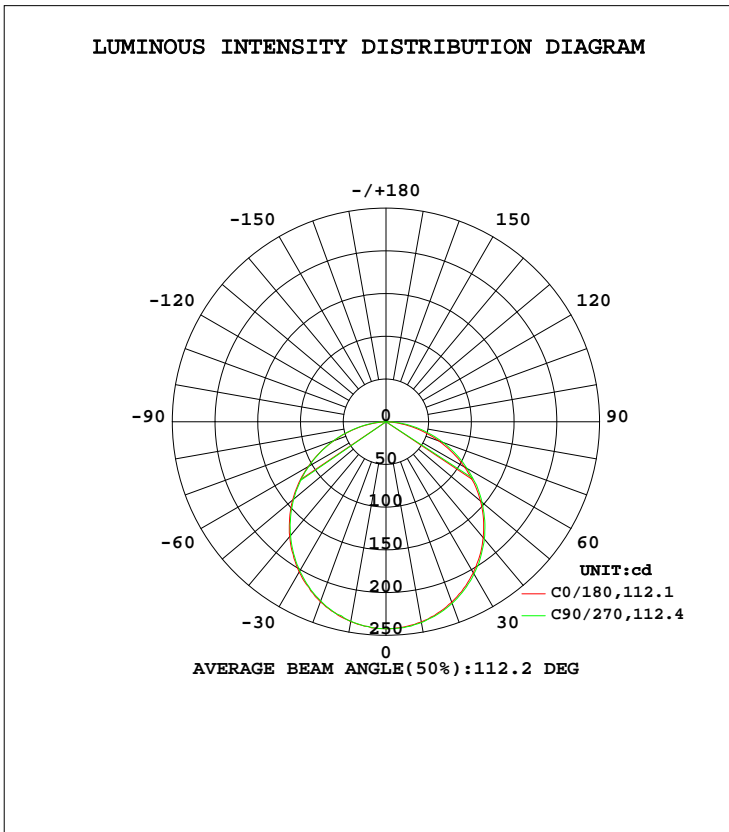


LUMINAIRE PHOTOMETRIC TEST REPORT

Test:U:120.03V I:0.0900A P:10.550W PF:0.9766 Freq:60.00Hz Lamp Flux:692.26lx1 lm		
NAME: LED Luminaire	TYPE: N/A	WEIGHT: N/A
SPEC.: ASD-MPR-5D10WH	DIM.: N/A	SERIAL No.: N/A
MFR.:ASD Lighting Corp	SUR.: N/A	Shielding Angle: N/A

DATA OF LAMP		PHOTOMETRIC DATA			
MODEL	ASD-MPR-5D10WH	Imax(cd)	242.4	S/MH(C0/180)	1.25
NOMINAL POWER(W)		LOR(%)	100.0	S/MH(C90/270)	1.26
RATED VOLTAGE(V)	120	TOTAL FLUX(lm)	692.26	η UP, DN(C0-180)	0.1,49.2
NOMINAL FLUX(lm)	692.261	CIE CLASS	DIRECT	η UP, DN(C180-360)	0.0,50.7
LAMPS INSIDE	1	η up(%)	0.1	CIBSE SHR NOM	1.25
TEST VOLTAGE(V)	120	η down(%)	99.9	CIBSE SHR MAX	1.35



C Range: 0 - 360DEG  
 C Interval: 22.5DEG  
 Test Speed: HIGH  
 Temperature:24.9DEG  
 Operators:Water  
 Test Date:2024-04-30

γ Range: 0 - 180DEG  
 γ Interval: 1.0DEG  
 Test System:EVERFINE GO-R5000\_V2 SYSTEM V2.00.446  
 Humidity:43%  
 Test Distance:2.519m [K=1.0000]  
 Remarks:

ZONAL FLUX DIAGRAM

ZONAL FLUX DIAGRAM:

γ	C0	C45	C90	C135	C180	C225	C270	C315	γ	Φ zone	Φ total	%lum, lamp
10	237.6	237.3	237.0	237.0	238.0	238.1	238.8	237.9	0- 10	22.91	22.91	3.31,3.31
20	224.5	223.6	223.4	223.2	224.9	225.6	226.3	225.9	10- 20	65.53	88.43	12.8,12.8
30	203.2	201.8	201.9	202.1	204.3	205.2	206.0	205.7	20- 30	99.13	187.6	27.1,27.1
40	175.4	173.7	173.9	174.6	177.1	178.2	179.0	178.8	30- 40	119.4	306.9	44.3,44.3
50	142.6	140.8	141.2	141.7	144.4	145.8	146.8	146.5	40- 50	123.9	430.8	62.2,62.2
60	105.3	104.2	104.4	105.0	106.1	108.1	109.8	109.5	50- 60	112.2	543.1	78.5,78.5
70	65.15	64.59	65.48	65.28	65.98	68.49	71.25	70.25	60- 70	86.07	629.1	90.9,90.9
80	25.43	25.62	27.38	25.99	26.35	29.19	32.67	30.76	70- 80	49.87	679.0	98.1,98.1
90	0.0661	0.0480	0.0458	0.0440	0.0696	0.0878	0.0104	0.1500	80- 90	12.40	691.4	99.9,99.9
100	0.0586	0.0623	0.0674	0.0775	0.0167	0.0175	0.0255	0.0166	90-100	0.0385	691.5	99.9,99.9
110	0.0790	0.0861	0.0874	0.0947	0.0395	0.0526	0.0433	0.0515	100-110	0.0614	691.5	99.9,99.9
120	0.1052	0.1241	0.1265	0.1273	0.0581	0.0768	0.0629	0.0724	110-120	0.0804	691.6	99.9,99.9
130	0.1839	0.1847	0.1914	0.1890	0.1013	0.1072	0.0956	0.1057	120-130	0.1058	691.7	99.9,99.9
140	0.2800	0.2950	0.3025	0.2992	0.1464	0.1508	0.1310	0.1445	130-140	0.1351	691.8	99.9,99.9
150	0.3905	0.4071	0.4142	0.3911	0.1722	0.1694	0.1592	0.1623	140-150	0.1579	692.0	100,100
160	0.4651	0.4459	0.4526	0.4816	0.2215	0.2205	0.1526	0.1743	150-160	0.1400	692.1	100,100
170	0.4484	0.4313	0.4073	0.4376	0.2988	0.2706	0.2291	0.2430	160-170	0.0948	692.2	100,100
180	0.3173	0.2957	0.2845	0.3036	0.3188	0.2963	0.2847	0.3040	170-180	0.0327	692.3	100,100
DEG	LUMINOUS INTENSITY:cd									UNIT:lm		

Conical surface Flux(90deg): 369.34 lm

%lum = 53.4%  
%lamp = 53.4%

Conical surface Flux(120deg): 543.08 lm

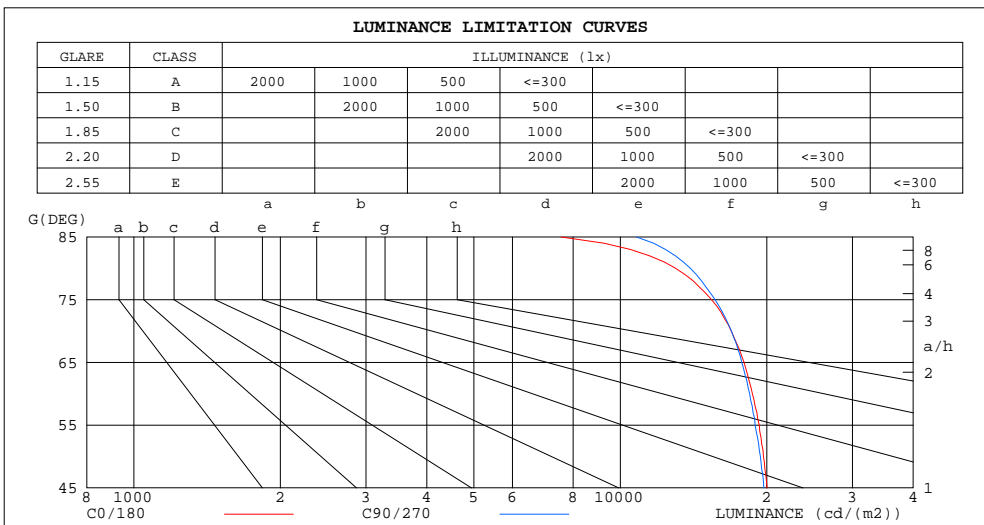
%lum = 78.5%  
%lamp = 78.5%

C Range: 0 - 360DEG  
C Interval: 22.5DEG  
Test Speed: HIGH  
Temperature:24.9DEG  
Operators:Water  
Test Date:2024-04-30

γ Range: 0 - 180DEG  
γ Interval: 1.0DEG  
Test System:EVERFINE GO-R5000\_V2 SYSTEM V2.00.446  
Humidity:43%  
Test Distance:2.519m [K=1.0000]  
Remarks:

**LUMINANCE LIMITATION CURVES**

Test:U:120.03V I:0.0900A P:10.550W PF:0.9766 Freq:60.00Hz Lamp Flux:692.26lx1 lm		
NAME: LED Luminaire	TYPE: N/A	WEIGHT: N/A
SPEC.: ASD-MPR-5D10WH 5000K	DIM.: N/A	SERIAL No.: N/A
MFR.: ASD Lighting Corp	SUR.: N/A	Shielding Angle: N/A



LUMINANCE cd/(m2)		
G(DEG)	C0/180	C90/270
85	7558	10800
80	12999	13934
75	15408	15662
70	16905	16918
65	17960	17778
60	18683	18451
55	19312	18926
50	19685	19409
45	20017	19726

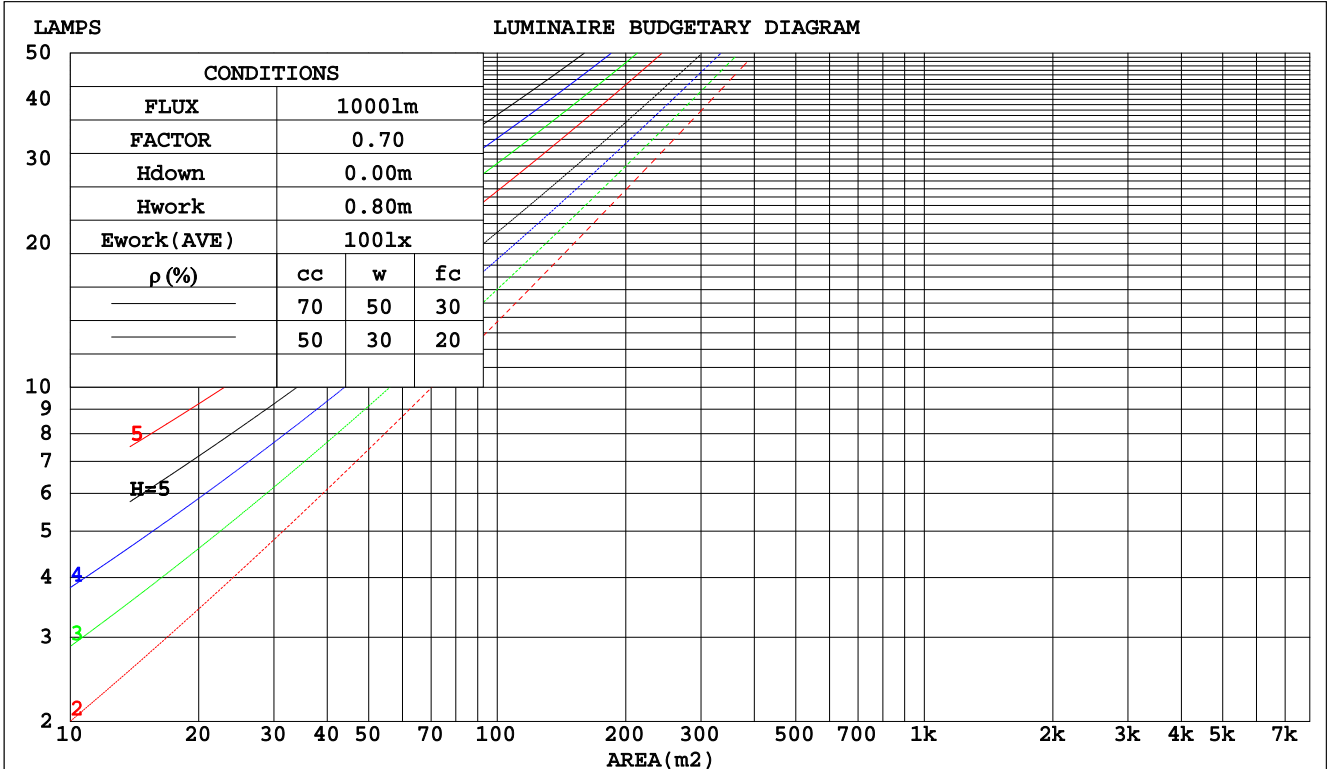
C Range: 0 - 360DEG  
 C Interval: 22.5DEG  
 Test Speed: HIGH  
 Temperature:24.9DEG  
 Operators:Water  
 Test Date:2024-04-30

γ Range: 0 - 180DEG  
 γ Interval: 1.0DEG  
 Test System:EVERFINE GO-R5000\_V2 SYSTEM V2.00.446  
 Humidity:43%  
 Test Distance:2.519m [K=1.0000]  
 Remarks:

CU AND LUMINAIRE BUDGETARY ESTIMATE DIAGRAM

Test:U:120.03V I:0.0900A P:10.550W PF:0.9766 Freq:60.00Hz Lamp Flux:692.26lx1 lm		
NAME: LED Luminaire	TYPE: N/A	WEIGHT: N/A
SPEC.: ASD-MPR-5D10WH 5000K	DIM.: N/A	SERIAL No.: N/A
MFR.: ASD Lighting Corp	SUR.: N/A	Shielding Angle: N/A

pcc	80%			70%			50%			30%			10%			0
	50%	30%	10%	50%	30%	10%	50%	30%	10%	50%	30%	10%	50%	30%	10%	0
pw																0
pfc	20%			20%			20%			20%			20%			0
RCR	RCR:Room Cavity Ratio															
	Coefficients of Utilization(CU)															
0.0	1.19	1.19	1.19	1.16	1.16	1.16	1.11	1.11	1.11	1.06	1.06	1.06	1.02	1.02	1.02	.00
1.0	1.04	.00	.96	1.02	.98	.94	.97	.94	.91	.93	.91	.88	.90	.88	.86	.83
2.0	.90	.83	.78	.88	.82	.77	.85	.80	.75	.82	.77	.73	.78	.75	.72	.69
3.0	.79	.71	.64	.78	.70	.64	.75	.68	.63	.72	.66	.62	.69	.65	.60	.58
4.0	.70	.61	.54	.69	.60	.54	.66	.59	.53	.64	.58	.53	.62	.56	.52	.50
5.0	.63	.54	.47	.61	.53	.47	.59	.52	.46	.57	.51	.46	.55	.50	.45	.43
6.0	.56	.47	.41	.55	.47	.41	.54	.46	.40	.52	.45	.40	.50	.44	.40	.37
7.0	.51	.42	.36	.50	.42	.36	.49	.41	.36	.47	.40	.35	.46	.40	.35	.33
8.0	.47	.38	.32	.46	.38	.32	.45	.37	.32	.43	.37	.32	.42	.36	.31	.29
9.0	.43	.34	.29	.42	.34	.29	.41	.34	.29	.40	.33	.28	.39	.33	.28	.26
10.0	.39	.31	.26	.39	.31	.26	.38	.31	.26	.37	.30	.26	.36	.30	.26	.24



C Range: 0 - 360DEG  
 C Interval: 22.5DEG  
 Test Speed: HIGH  
 Temperature:24.9DEG  
 Operators:Water  
 Test Date:2024-04-30

γ Range: 0 - 180DEG  
 γ Interval: 1.0DEG  
 Test System:EVERFINE GO-R5000\_V2 SYSTEM V2.00.446  
 Humidity:43%  
 Test Distance:2.519m [K=1.0000]  
 Remarks:

WEC AND CCEC

Test:U:120.03V I:0.0900A P:10.550W PF:0.9766 Freq:60.00Hz		
Lamp Flux:692.26lx1 lm		
NAME: LED Luminaire	TYPE: N/A	WEIGHT: N/A
SPEC.: ASD-MPR-5D10WH 5000K	DIM.: N/A	SERIAL No.: N/A
MFR.:ASD Lighting Corp	SUR.: N/A	Shielding Angle: N/A

ρcc	80%			70%			50%			30%			10%			0
ρw	50%	30%	10%	50%	30%	10%	50%	30%	10%	50%	30%	10%	50%	30%	10%	0
ρfc	20%			20%			20%			20%			20%			0
RCR	RCR:Room Cavity Ratio						Wall Exitance Coefficients(WEC)									
0.0																
1.0	.310	.176	.056	.303	.173	.055	.290	.166	.053	.277	.160	.051	.266	.154	.050	
2.0	.292	.160	.049	.286	.158	.049	.274	.153	.047	.263	.148	.046	.253	.143	.045	
3.0	.271	.144	.043	.265	.142	.043	.255	.138	.042	.245	.134	.041	.236	.131	.040	
4.0	.250	.130	.038	.245	.128	.038	.236	.125	.037	.227	.122	.037	.219	.119	.036	
5.0	.231	.118	.034	.226	.116	.034	.218	.114	.033	.211	.111	.033	.203	.109	.033	
6.0	.214	.107	.031	.210	.106	.031	.203	.104	.030	.196	.102	.030	.190	.100	.030	
7.0	.199	.098	.028	.196	.097	.028	.189	.096	.028	.183	.094	.027	.177	.092	.027	
8.0	.186	.091	.026	.183	.090	.025	.177	.088	.025	.172	.087	.025	.166	.085	.025	
9.0	.174	.084	.024	.171	.084	.023	.166	.082	.023	.161	.081	.023	.157	.080	.023	
10.0	.164	.079	.022	.161	.078	.022	.157	.077	.022	.152	.076	.021	.148	.074	.021	

ρcc	80%			70%			50%			30%			10%			0
ρw	50%	30%	10%	50%	30%	10%	50%	30%	10%	50%	30%	10%	50%	30%	10%	0
ρfc	20%			20%			20%			20%			20%			0
RCR	RCR:Room Cavity Ratio						Ceiling Cavity Exitance Coefficients(CCEC)									
0.0	.191	.191	.191	.164	.164	.164	.112	.112	.112	.064	.064	.064	.021	.021	.021	
1.0	.181	.157	.135	.155	.135	.116	.106	.093	.081	.061	.054	.047	.020	.017	.015	
2.0	.173	.133	.099	.148	.114	.085	.102	.079	.060	.059	.046	.035	.019	.015	.011	
3.0	.166	.115	.075	.142	.099	.065	.097	.069	.046	.056	.040	.027	.018	.013	.009	
4.0	.158	.102	.059	.136	.088	.051	.093	.061	.036	.054	.036	.021	.017	.012	.007	
5.0	.151	.092	.048	.129	.079	.042	.089	.055	.030	.052	.032	.018	.017	.011	.006	
6.0	.143	.083	.040	.123	.072	.035	.085	.050	.025	.049	.030	.015	.016	.010	.005	
7.0	.136	.076	.034	.117	.066	.030	.081	.046	.021	.047	.027	.013	.015	.009	.004	
8.0	.130	.071	.030	.112	.061	.026	.077	.043	.018	.045	.025	.011	.015	.008	.004	
9.0	.124	.066	.026	.107	.057	.023	.074	.040	.016	.043	.024	.010	.014	.008	.003	
10.0	.118	.061	.023	.102	.053	.020	.071	.037	.014	.041	.022	.009	.013	.007	.003	

C Range: 0 - 360DEG  
 C Interval: 22.5DEG  
 Test Speed: HIGH  
 Temperature:24.9DEG  
 Operators:Water  
 Test Date:2024-04-30

γ Range: 0 - 180DEG  
 γ Interval: 1.0DEG  
 Test System:EVERFINE GO-R5000\_V2 SYSTEM V2.00.446  
 Humidity:43%  
 Test Distance:2.519m [K=1.0000]  
 Remarks:

UGR(Unified Glare Rating) Table

Test:U:120.03V I:0.0900A P:10.550W PF:0.9766 Freq:60.00Hz										
Lamp Flux:692.26lx1 lm										
NAME: LED Luminaire				TYPE: N/A				WEIGHT: N/A		
SPEC.: ASD-MPR-5D10WH 5000K				DIM.: N/A				SERIAL No.: N/A		
MFR.: ASD Lighting Corp				SUR.: N/A				Shielding Angle: N/A		
ceiling/cavity	0.7	0.7	0.5	0.5	0.3	0.7	0.7	0.5	0.5	0.3
walls	0.5	0.3	0.5	0.3	0.3	0.5	0.3	0.5	0.3	0.3
working plane	0.2	0.2	0.2	0.2	0.2	0.2	0.2	0.2	0.2	0.2
Room dimensions	Viewed crosswise					Viewed endwise				
x = 2H y = 2H	24.4	25.9	24.6	26.1	26.3	24.3	25.8	24.6	26.0	26.2
3H	25.9	27.3	26.2	27.5	27.7	25.8	27.2	26.1	27.5	27.7
4H	26.4	27.8	26.8	28.0	28.3	26.4	27.8	26.8	28.0	28.3
6H	26.8	28.1	27.2	28.4	28.6	26.9	28.1	27.2	28.4	28.7
8H	26.9	28.1	27.3	28.4	28.7	27.0	28.2	27.3	28.5	28.8
12H	26.9	28.1	27.3	28.4	28.7	27.1	28.2	27.4	28.5	28.8
4H 2H	24.9	26.3	25.3	26.5	26.8	24.9	26.3	25.2	26.5	26.8
3H	26.6	27.8	27.0	28.1	28.4	26.6	27.8	27.0	28.1	28.4
4H	27.3	28.4	27.7	28.7	29.1	27.4	28.4	27.7	28.8	29.1
6H	27.8	28.8	28.2	29.1	29.5	27.9	28.9	28.3	29.2	29.6
8H	28.0	28.9	28.4	29.2	29.6	28.1	29.0	28.5	29.4	29.7
12H	28.0	28.8	28.5	29.2	29.6	28.2	29.0	28.6	29.4	29.8
8H 4H	27.6	28.5	28.0	28.8	29.2	27.6	28.5	28.0	28.9	29.3
6H	28.2	29.0	28.7	29.4	29.8	28.3	29.0	28.8	29.5	29.9
8H	28.4	29.1	28.9	29.5	30.0	28.6	29.2	29.0	29.6	30.1
12H	28.5	29.1	29.0	29.5	30.0	28.7	29.3	29.2	29.8	30.2
12H 4H	27.6	28.4	28.0	28.8	29.2	27.6	28.4	28.0	28.8	29.2
6H	28.3	28.9	28.7	29.4	29.8	28.4	29.0	28.8	29.4	29.9
8H	28.5	29.1	29.0	29.5	30.0	28.6	29.2	29.1	29.7	30.1
Variations with the observer position at spacings(CIE Pub.117):										
S = 1.0H	+ 0.2 / - 0.2					+ 0.2 / - 0.2				
1.5H	+ 0.2 / - 0.3					+ 0.2 / - 0.3				
2.0H	+ 0.2 / - 0.3					+ 0.2 / - 0.3				

CIE Pub.117, 692.3 lm Total Lamp Luminous Flux Correct (8log(F/F0) = -1.3)  
 Area: 0.011304 m2

C Range: 0 - 360DEG  
 C Interval: 22.5DEG  
 Test Speed: HIGH  
 Temperature:24.9DEG  
 Operators:Water  
 Test Date:2024-04-30

γ Range: 0 - 180DEG  
 γ Interval: 1.0DEG  
 Test System:EVERFINE GO-R5000\_V2 SYSTEM V2.00.446  
 Humidity:43%  
 Test Distance:2.519m [K=1.0000]  
 Remarks:

**UTILIZATION FACTORS TABLE**

Test:U:120.03V I:0.0900A P:10.550W PF:0.9766 Freq:60.00Hz Lamp Flux:692.26lx1 lm		
NAME: LED Luminaire	TYPE: N/A	WEIGHT: N/A
SPEC.: ASD-MPR-5D10WH 5000K	DIM.: N/A	SERIAL No.: N/A
MFR.:ASD Lighting Corp	SUR.: N/A	Shielding Angle: N/A

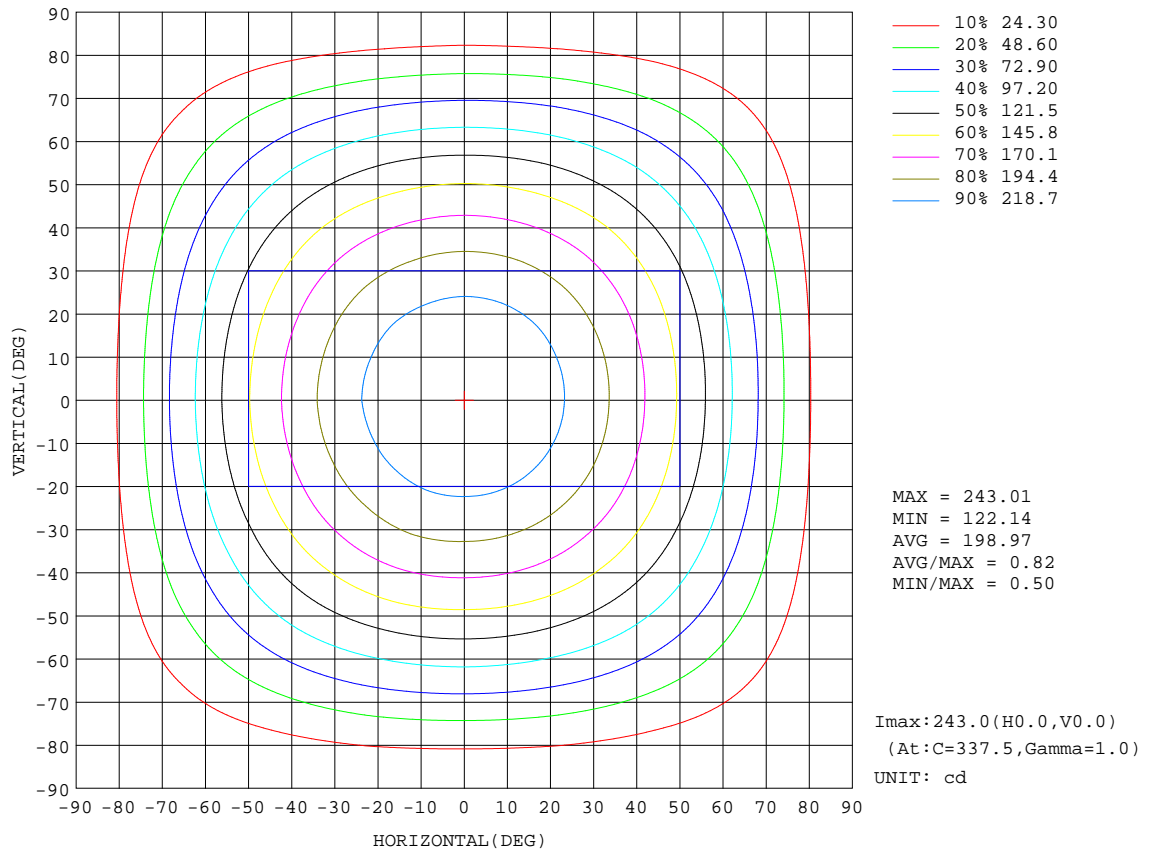
REFLECTANCE										
Ceiling	0.8	0.8	0.8	0.7	0.7	0.7	0.5	0.5	0.5	0
Walls	0.7	0.5	0.3	0.7	0.5	0.3	0.7	0.5	0.3	0
Working plane	0.2	0.2	0.2	0.2	0.2	0.2	0.2	0.2	0.2	0
ROOM INDEX	UTILIZATION FACTORS(PERCENT) $k(RI) \times RCR = 5$									
k = 0.60	57	46	39	57	45	39	55	45	38	32
0.80	67	56	48	66	55	48	65	55	48	41
1.00	76	65	57	75	64	57	72	65	56	49
1.25	83	72	65	81	72	65	79	70	64	57
1.50	88	78	71	86	77	70	83	75	69	62
2.00	95	86	80	93	85	79	89	83	77	70
2.50	99	91	85	97	90	84	93	87	82	74
3.00	102	95	90	100	94	89	96	91	86	78
4.00	106	100	96	104	99	94	100	95	92	83
5.00	109	104	100	106	102	98	102	98	95	86
ROOM INDEX	UF(total)									Direct
According to DIN EN 13032-2 2004			Suspended				SHRNOM = 1.25			

C Range: 0 - 360DEG  
 C Interval: 22.5DEG  
 Test Speed: HIGH  
 Temperature:24.9DEG  
 Operators:Water  
 Test Date:2024-04-30

$\gamma$  Range: 0 - 180DEG  
 $\gamma$  Interval: 1.0DEG  
 Test System:EVERFINE GO-R5000\_V2 SYSTEM V2.00.446  
 Humidity:43%  
 Test Distance:2.519m [K=1.0000]  
 Remarks:

**ISOCANDELA DIAGRAM**

Test:U:120.03V I:0.0900A P:10.550W PF:0.9766 Freq:60.00Hz Lamp Flux:692.26lx1 lm		
NAME: LED Luminaire	TYPE: N/A	WEIGHT: N/A
SPEC.: ASD-MPR-5D10WH 5000K	DIM.: N/A	SERIAL No.: N/A
MFR.: ASD Lighting Corp	SUR.: N/A	Shielding Angle: N/A



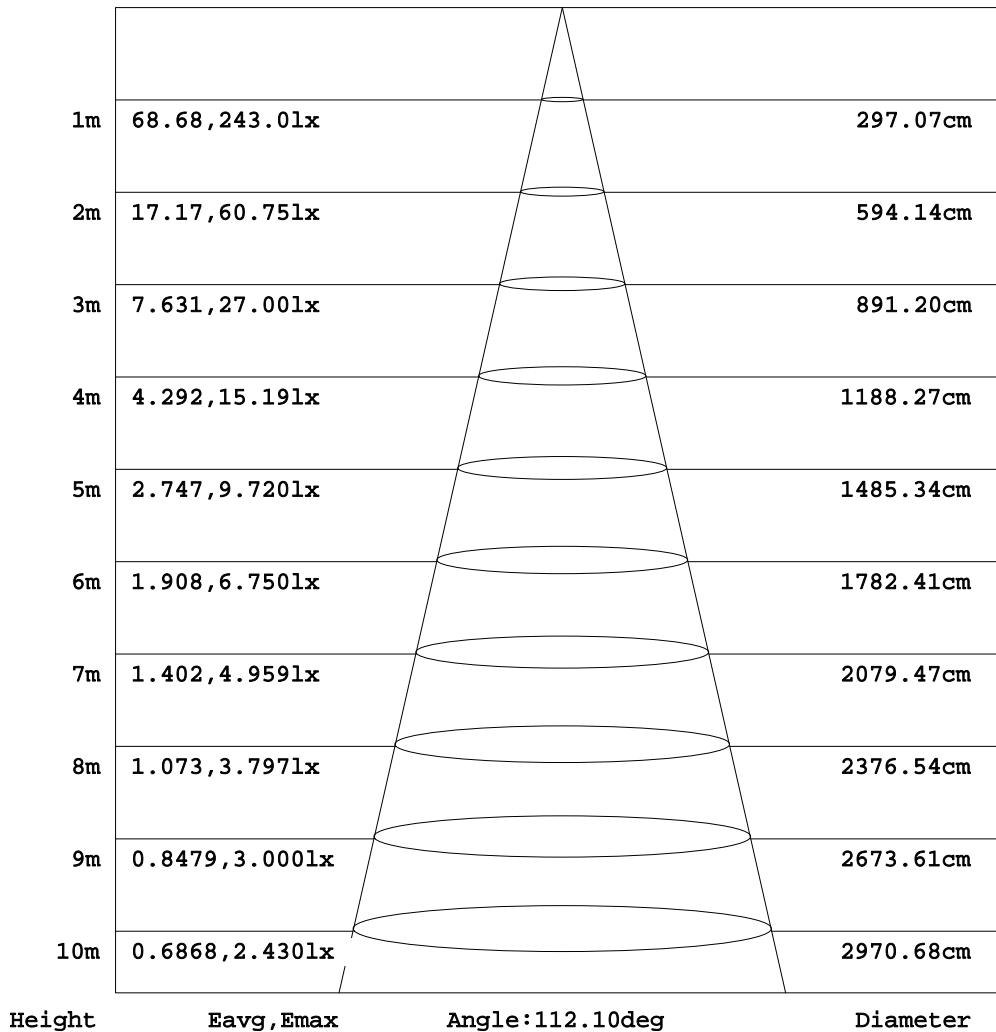
C Range: 0 - 360DEG  
 C Interval: 22.5DEG  
 Test Speed: HIGH  
 Temperature: 24.9DEG  
 Operators: Water  
 Test Date: 2024-04-30

γ Range: 0 - 180DEG  
 γ Interval: 1.0DEG  
 Test System: EVERFINE GO-R5000\_V2 SYSTEM V2.00.446  
 Humidity: 43%  
 Test Distance: 2.519m [K=1.0000]  
 Remarks:

**AAI Figure**

Test:U:120.03V I:0.0900A P:10.550W PF:0.9766 Freq:60.00Hz Lamp Flux:692.26lx1 lm		
NAME: LED Luminaire	TYPE: N/A	WEIGHT: N/A
SPEC.:ASD-MPR-5D10WH 5000K	DIM.: N/A	SERIAL No.: N/A
MFR.: ASD Lighting Corp	SUR.: N/A	Shielding Angle: N/A

Flux out:511.6 lm



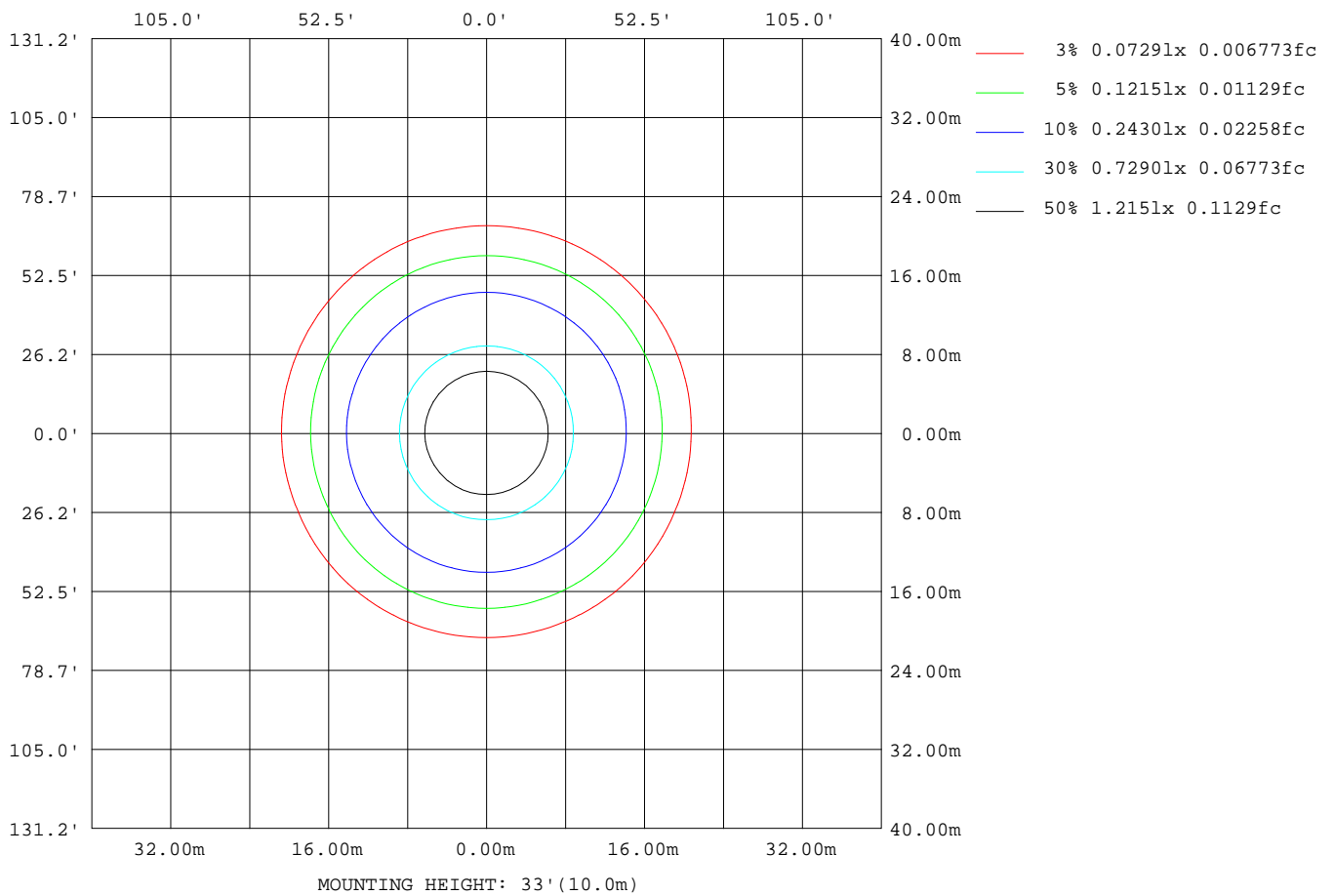
Note:The Curves indicate the illuminated area and the average illumination when the luminaire is at different distance.

C Range: 0 - 360DEG  
C Interval: 22.5DEG  
Test Speed: HIGH  
Temperature:24.9DEG  
Operators:Water  
Test Date:2024-04-30

γ Range: 0 - 180DEG  
γ Interval: 1.0DEG  
Test System:EVERFINE GO-R5000\_V2 SYSTEM V2.00.446  
Humidity:43%  
Test Distance:2.519m [K=1.0000]  
Remarks:

**ISOLUX DIAGRAM**

Test:U:120.03V I:0.0900A P:10.550W PF:0.9766 Freq:60.00Hz Lamp Flux:692.26lx1 lm		
NAME: LED Luminaire	TYPE: N/A	WEIGHT: N/A
SPEC.:ASD-MPR-5D10WH 5000K	DIM.: N/A	SERIAL No.: N/A
MFR.: ASD Lighting Corp	SUR.: N/A	Shielding Angle: N/A



C Range: 0 - 360DEG  
 C Interval: 22.5DEG  
 Test Speed: HIGH  
 Temperature:24.9DEG  
 Operators:Water  
 Test Date:2024-04-30

γ Range: 0 - 180DEG  
 γ Interval: 1.0DEG  
 Test System:EVERFINE GO-R5000\_V2 SYSTEM V2.00.446  
 Humidity:43%  
 Test Distance:2.519m [K=1.0000]  
 Remarks:

LED Avg.L Report

Test:U:120.03V I:0.0900A P:10.550W PF:0.9766 Freq:60.00Hz Lamp Flux:692.26lx1 lm		
NAME: LED Luminaire	TYPE: N/A	WEIGHT: N/A
SPEC.: ASD-MPR-5D10WH 5000K	DIM.: N/A	SERIAL No.: N/A
MFR.: ASD Lighting Corp	SUR.: N/A	Shielding Angle: N/A

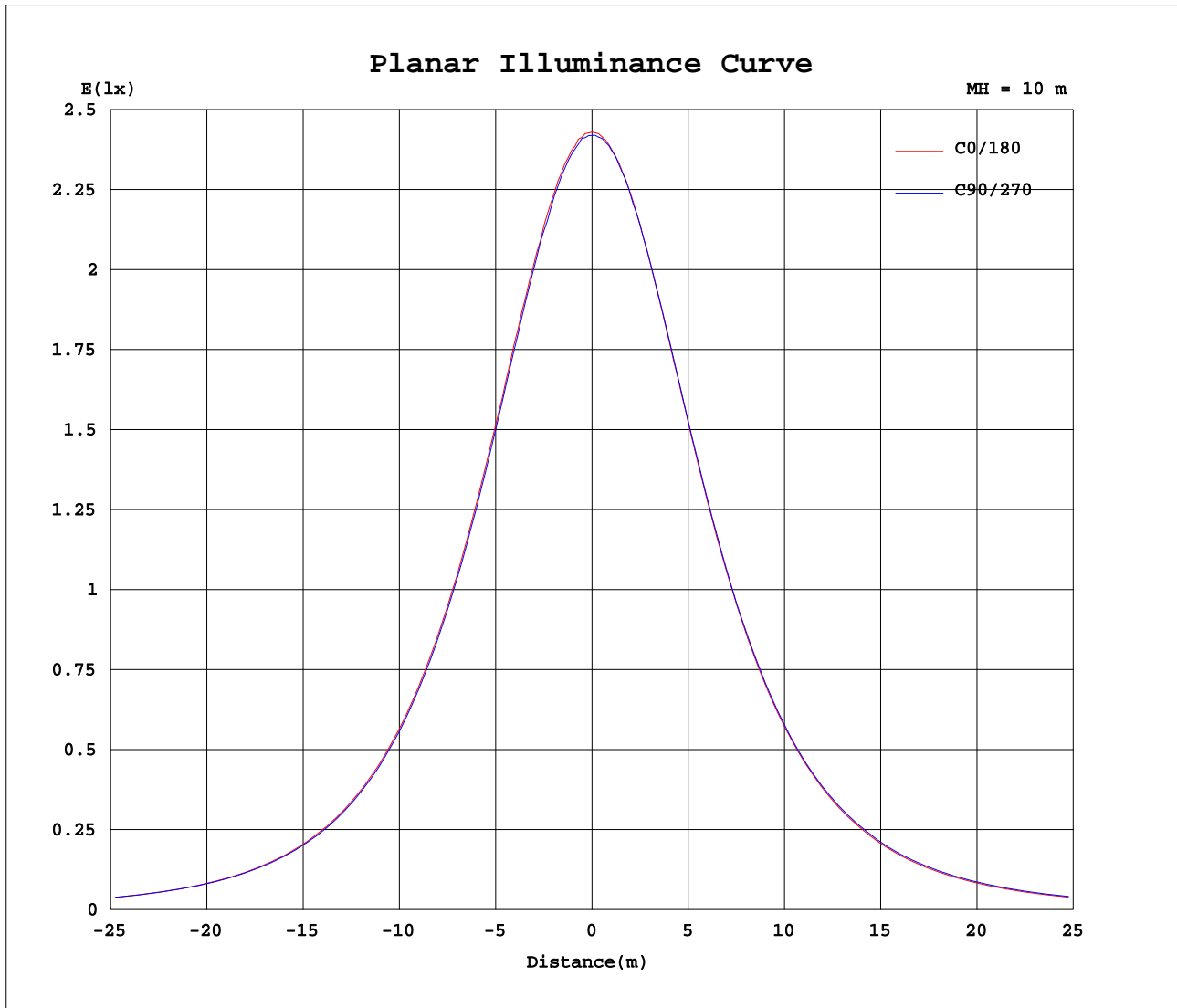
AvgL	cd/m2
L_0~180(65)av	17984
L_0~180(75)av	15527
L_0~180(85)av	7932
L_90~270(65)av	18376
L_90~270(75)av	16640
L_90~270(85)av	13155
L_45(65)av	18256
L_45(75)av	16113
L_45(85)av	10329

Standard: GB/T 29293-2012

C Range: 0 - 360DEG  
 C Interval: 22.5DEG  
 Test Speed: HIGH  
 Temperature:24.9DEG  
 Operators:Water  
 Test Date:2024-04-30

γ Range: 0 - 180DEG  
 γ Interval: 1.0DEG  
 Test System:EVERFINE GO-R5000\_V2 SYSTEM V2.00.446  
 Humidity:43%  
 Test Distance:2.519m [K=1.0000]  
 Remarks:

**Planar Illuminance Curve**



C Range: 0 - 360DEG  
 C Interval: 22.5DEG  
 Test Speed: HIGH  
 Temperature: 24.9DEG  
 Operators: Water  
 Test Date: 2024-04-30

γ Range: 0 - 180DEG  
 γ Interval: 1.0DEG  
 Test System: EVERFINE GO-R5000\_V2 SYSTEM V2.00.446  
 Humidity: 43%  
 Test Distance: 2.519m [K=1.0000]  
 Remarks:

LUMINOUS DISTRIBUTION INTENSITY DATA

Test:U:120.03V I:0.0900A P:10.550W PF:0.9766 Freq:60.00Hz Lamp Flux:692.26lx1 lm		
NAME: LED Luminaire	TYPE: N/A	WEIGHT: N/A
SPEC.:ASD-MPR-5D10WH 5000K	DIM.: N/A	SERIAL No.: N/A
MFR.: RISING-SUN	SUR.: N/A	Shielding Angle: N/A

Table--1

UNIT: cd

C(DEG) γ (DEG)	0	22.5	45	67.5	90	112.5	135	157.5	180	202.5	225	247.5	270	292.5	315	337.5			
0	242	242	242	242	242	242	242	242	242	242	242	242	242	242	242	242			
5	241	241	241	240	241	241	240	241	241	241	242	240	242	242	241	241			
10	238	238	237	237	237	237	237	238	238	238	238	238	239	238	238	239			
15	231	232	231	230	232	232	231	232	232	233	233	232	233	233	233	233			
20	224	224	224	223	223	224	223	224	225	225	226	225	226	226	226	226			
25	214	214	213	213	213	214	214	215	215	216	216	216	217	217	216	216			
30	203	203	202	202	202	203	202	203	204	205	205	205	206	206	206	205			
35	189	190	189	188	188	190	189	190	191	192	192	193	193	194	193	192			
40	175	175	174	174	174	175	175	176	177	178	178	178	179	179	179	178			
45	159	159	158	158	158	159	159	160	161	162	162	163	164	164	163	162			
50	143	142	141	141	141	142	142	143	144	145	146	146	147	147	146	145			
55	125	124	123	123	123	123	124	124	126	127	128	128	129	129	129	127			
60	105	104	104	104	104	104	105	105	106	107	108	109	110	110	109	108			
65	85.5	84.6	84.6	84.7	85.0	85.3	85.4	84.9	86.3	87.1	88.6	90.0	90.5	91.0	90.3	88.7			
70	65.1	64.6	64.6	65.1	65.5	65.9	65.3	64.7	66.0	66.8	68.5	70.2	71.3	71.4	70.2	68.5			
75	44.9	44.6	44.6	45.9	45.9	46.5	45.2	44.8	45.9	46.3	48.4	50.3	51.5	51.8	50.3	48.2			
80	25.4	25.4	25.6	27.3	27.4	27.7	26.0	25.3	26.4	26.8	29.2	31.1	32.7	32.1	30.8	28.5			
85	7.42	7.80	8.43	10.5	10.7	10.5	8.24	7.31	8.21	8.73	11.4	13.5	15.3	14.1	12.6	10.0			
90	0.07	0.07	0.05	0.04	0.05	0.04	0.04	0.04	0.07	0.03	0.09	0.04	0.01	0.09	0.15	0.11			
95	0.05	0.05	0.05	0.05	0.06	0.05	0.05	0.05	0.01	0.01	0.01	0.01	0.01	0.01	0.01	0.01			
100	0.06	0.06	0.06	0.08	0.07	0.08	0.08	0.06	0.02	0.02	0.02	0.04	0.03	0.04	0.02	0.02			
105	0.07	0.07	0.08	0.08	0.08	0.09	0.08	0.08	0.03	0.04	0.04	0.05	0.03	0.05	0.04	0.04			
110	0.08	0.08	0.09	0.09	0.09	0.10	0.09	0.08	0.04	0.05	0.05	0.06	0.04	0.06	0.05	0.05			
115	0.10	0.10	0.10	0.11	0.10	0.11	0.11	0.10	0.05	0.06	0.06	0.07	0.05	0.06	0.06	0.06			
120	0.11	0.11	0.12	0.13	0.13	0.13	0.13	0.12	0.06	0.07	0.08	0.08	0.06	0.07	0.07	0.07			
125	0.14	0.14	0.15	0.15	0.16	0.16	0.15	0.14	0.08	0.08	0.09	0.09	0.08	0.08	0.09	0.08			
130	0.18	0.17	0.18	0.19	0.19	0.19	0.19	0.17	0.10	0.10	0.11	0.11	0.10	0.11	0.11	0.10			
135	0.21	0.22	0.23	0.23	0.24	0.24	0.23	0.21	0.11	0.11	0.12	0.13	0.12	0.13	0.13	0.11			
140	0.28	0.28	0.30	0.30	0.30	0.30	0.30	0.27	0.15	0.13	0.15	0.14	0.13	0.14	0.14	0.12			
145	0.34	0.34	0.35	0.37	0.37	0.36	0.35	0.33	0.15	0.16	0.15	0.16	0.14	0.15	0.15	0.16			
150	0.39	0.40	0.41	0.41	0.41	0.41	0.39	0.38	0.17	0.17	0.17	0.17	0.16	0.17	0.16	0.19			
155	0.44	0.46	0.44	0.44	0.45	0.45	0.42	0.41	0.16	0.16	0.16	0.17	0.16	0.17	0.15	0.21			
160	0.47	0.45	0.45	0.45	0.45	0.46	0.48	0.45	0.22	0.20	0.22	0.18	0.15	0.16	0.17	0.21			
165	0.42	0.42	0.43	0.45	0.46	0.47	0.48	0.44	0.26	0.23	0.26	0.24	0.21	0.21	0.20	0.21			
170	0.45	0.40	0.43	0.43	0.41	0.43	0.44	0.44	0.30	0.25	0.27	0.27	0.23	0.22	0.24	0.27			
175	0.38	0.40	0.42	0.41	0.40	0.38	0.41	0.46	0.38	0.35	0.28	0.28	0.25	0.27	0.30	0.31			
180	0.32	0.31	0.30	0.29	0.28	0.29	0.30	0.31	0.32	0.31	0.30	0.29	0.28	0.29	0.30	0.31			

C Range: 0 - 360DEG  
 C Interval: 22.5DEG  
 Test Speed: HIGH  
 Temperature:24.9DEG  
 Operators:Water  
 Test Date:2024-04-30

γ Range: 0 - 180DEG  
 γ Interval: 1.0DEG  
 Test System:EVERFINE GO-R5000\_V2 SYSTEM V2.00.446  
 Humidity:43%  
 Test Distance:2.519m [K=1.0000]  
 Remarks: