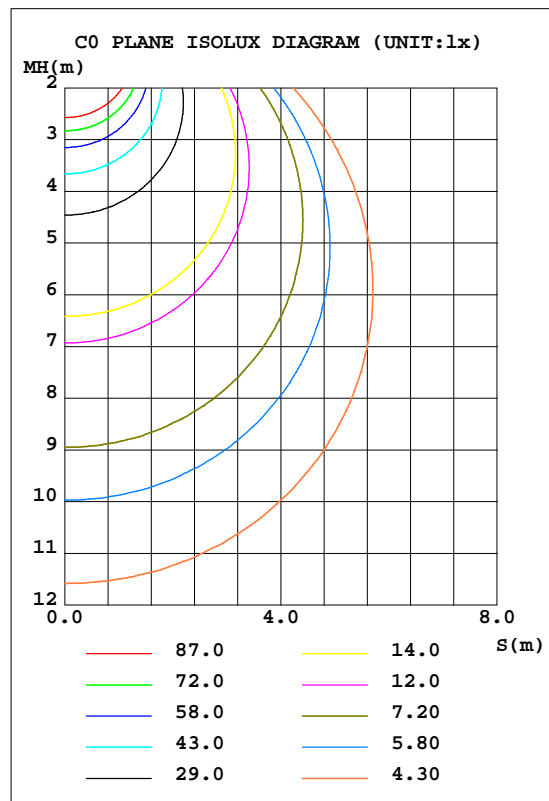
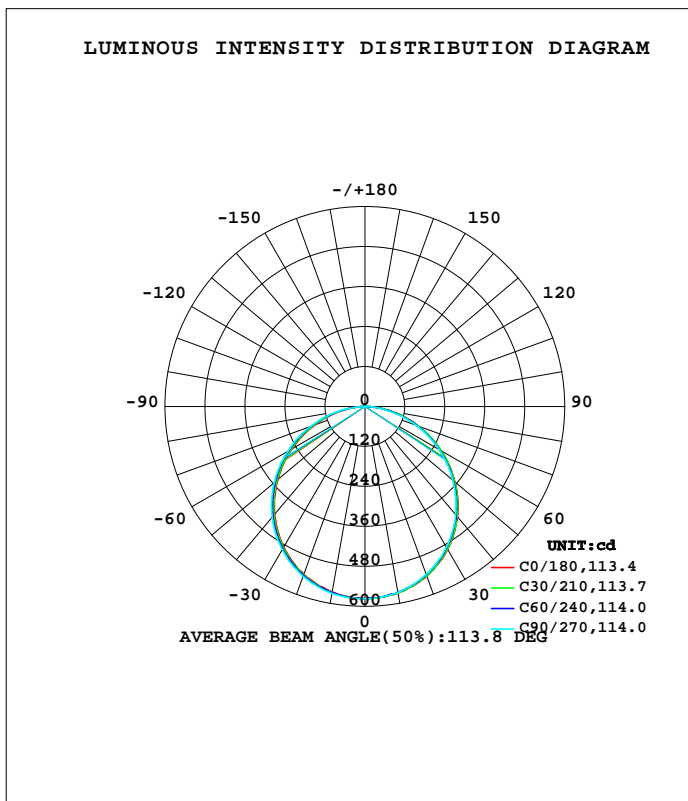


LUMINAIRE PHOTOMETRIC TEST REPORT

Test:U:120.16V I:0.1592A P:19.130W PF:0.9865 Freq:59.98Hz Lamp Flux:1688.1x1 lm		
NAME:	TYPE:	WEIGHT:
SPEC.:	DIM.:	SERIAL No.:
MFR.: ASD LIGHTNG CORP	SUR.: ϕ 0.18	Shielding Angle:

DATA OF LAMP		PHOTOMETRIC DATA Eff: 88.24 lm/W			
MODELASD-JBR-8D20AC(3500K)		I _{max} (cd)	577.6	S/MH(C0/180)	1.26
NOMINAL POWER(W)	20	LOR(%)	100.0	S/MH(C90/270)	1.28
RATED VOLTAGE(V)	120	TOTAL FLUX(lm)	1688.1	h UP, DN(C0-180)	0.2,49.4
NOMINAL FLUX(lm)	1688.1	CIE CLASS	DIRECT	h UP, DN(C180-360)	0.2,50.2
LAMPS INSIDE	1	h up(%)	0.5	CIBSE SHR NOM	1.25
TEST VOLTAGE(V)	120.0	h down(%)	99.5	CIBSE SHR MAX	1.35



C Range: 0 - 360DEG
 C Interval: 30.0DEG
 Test Speed: HIGH
 Temperature:25.3DEG
 Operators:
 Test Date:2022-06-13

g Range: 0 - 180DEG
 g Interval: 1.0DEG
 Test System:EVERFINE GO-2000B_V1 SYSTEM V2.00.426
 Humidity:65.0%
 Test Distance:8.600m [K=1.0116]
 Remarks:

ZONAL FLUX DIAGRAM

ZONAL FLUX DIAGRAM:

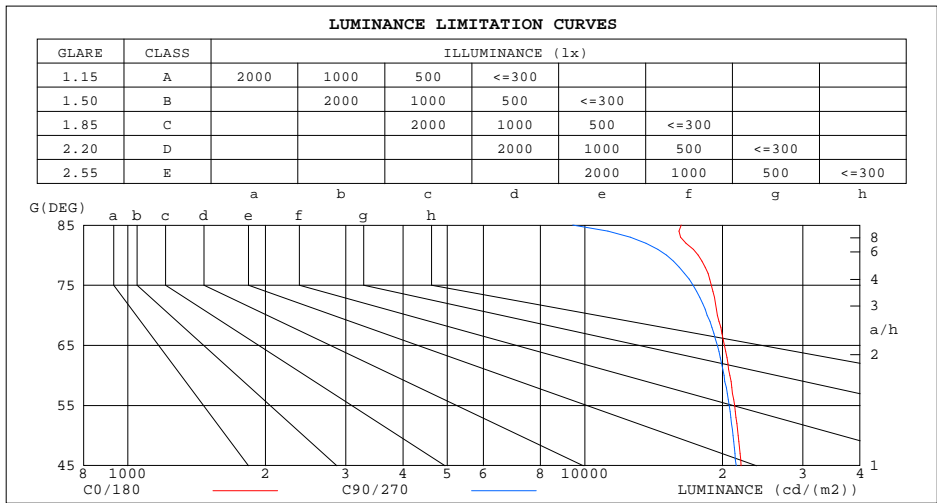
g	C0	C45	C90	C135	C180	C225	C270	C315	g	F zone	F total	%lum,lamp
10	568.2	567.5	566.6	565.3	565.1	566.8	569.7	570.0	0- 10	54.60	54.60	3.23,3.23
20	541.7	539.8	536.5	534.9	535.8	538.3	542.7	543.4	10- 20	156.8	211.4	12.5,12.5
30	496.1	492.2	488.2	485.8	487.2	492.1	496.4	498.8	20- 30	238.7	450.1	26.7,26.7
40	432.1	427.9	423.8	419.5	422.0	426.8	433.2	435.5	30- 40	288.9	739.0	43.8,43.8
50	353.3	349.4	344.6	339.5	342.0	348.0	355.4	357.2	40- 50	300.5	1039	61.6,61.6
60	263.8	260.5	256.4	250.0	252.0	259.8	267.1	268.7	50- 60	272.7	1312	77.7,77.7
70	169.4	166.8	161.1	156.5	157.9	166.0	171.7	174.0	60- 70	210.6	1523	90.2,90.2
80	78.10	74.35	66.65	64.58	66.46	71.28	76.06	77.61	70- 80	125.2	1648	97.6,97.6
90	2.486	0.2610	0.2294	0.2612	0.2503	0.2621	0.2455	0.5572	80- 90	32.39	1680	99.5,99.5
100	0.4257	0.4873	0.5122	0.4980	0.5647	0.5167	0.5863	0.5323	90-100	0.4482	1681	99.6,99.6
110	0.8140	0.8761	0.8693	0.8628	0.9267	0.8760	0.8100	0.8071	100-110	0.7131	1682	99.6,99.6
120	1.197	1.293	1.237	1.228	1.310	1.228	1.178	1.151	110-120	1.032	1683	99.7,99.7
130	1.533	1.510	1.599	1.506	1.602	1.489	1.466	1.449	120-130	1.230	1684	99.8,99.8
140	1.794	1.707	1.728	1.723	1.889	1.795	1.727	1.689	130-140	1.263	1685	99.8,99.8
150	1.874	1.899	1.951	1.948	1.991	2.024	1.898	1.910	140-150	1.150	1686	99.9,99.9
160	2.060	2.191	2.159	2.133	2.437	2.146	2.111	2.088	150-160	0.9404	1687	99.9,99.9
170	2.257	2.287	2.340	2.304	2.359	2.591	2.340	2.301	160-170	0.6358	1688	100,100
180	2.470	2.453	2.468	2.442	2.481	2.474	2.458	2.453	170-180	0.2293	1688	100,100
DEG	LUMINOUS INTENSITY:cd									UNIT:lm		

C Range: 0 - 360DEG
 C Interval: 30.0DEG
 Test Speed: HIGH
 Temperature:25.3DEG
 Operators:
 Test Date:2022-06-13

g Range: 0 - 180DEG
 g Interval: 1.0DEG
 Test System:EVERFINE GO-2000B_V1 SYSTEM V2.00.426
 Humidity:65.0%
 Test Distance:8.600m [K=1.0116]
 Remarks:

LUMINANCE LIMITATION CURVES

Test:U:120.16V I:0.1592A P:19.130W PF:0.9865 Freq:59.98Hz Lamp Flux:1688.1x1 lm		
NAME:	TYPE:	WEIGHT:
SPEC.:	DIM.:	SERIAL No.:
MFR.: ASD LIGHTNG CORP	SUR.: ϕ 0.18	Shielding Angle:



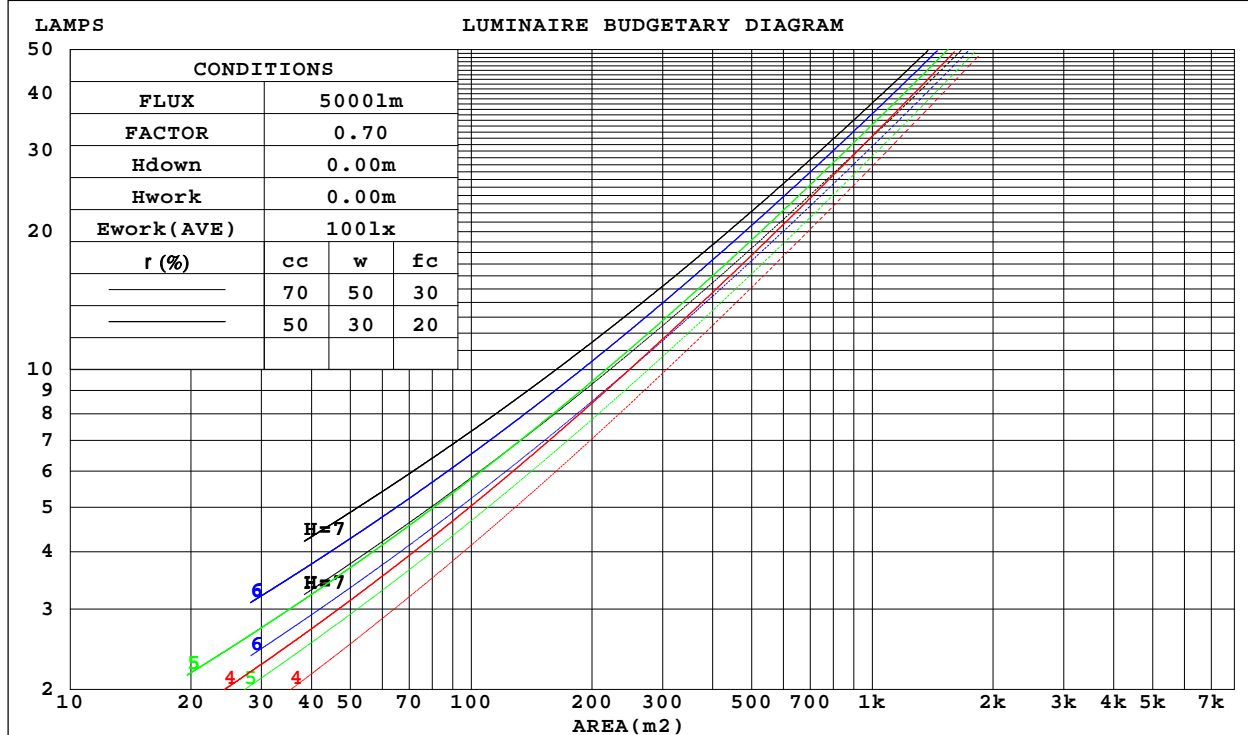
C Range: 0 - 360DEG
 C Interval: 30.0DEG
 Test Speed: HIGH
 Temperature:25.3DEG
 Operators:
 Test Date:2022-06-13

g Range: 0 - 180DEG
 g Interval: 1.0DEG
 Test System:EVERFINE GO-2000B_V1 SYSTEM V2.00.426
 Humidity:65.0%
 Test Distance:8.600m [K=1.0116]
 Remarks:

CU AND LUMINAIRE BUDGETARY ESTIMATE DIAGRAM

Test:U:120.16V I:0.1592A P:19.130W PF:0.9865 Freq:59.98Hz Lamp Flux:1688.1x1 lm		
NAME:	TYPE:	WEIGHT:
SPEC.:	DIM.:	SERIAL No.:
MFR.: ASD LIGHTNG CORP	SUR.: ϕ 0.18	Shielding Angle:

r cc	80%			70%			50%			30%			10%			0
r w	50%	30%	10%	50%	30%	10%	50%	30%	10%	50%	30%	10%	50%	30%	10%	0
r fc	20%			20%			20%			20%			20%			0
RCR	RCR:Room Cavity Ratio						Coefficients of Utilization(CU)									
0.0	1.19	1.19	1.19	1.16	1.16	1.16	1.11	1.11	1.11	1.06	1.06	1.06	1.02	1.02	1.02	.00
1.0	1.04	.99	.95	1.01	.97	.94	.97	.94	.91	.93	.90	.88	.89	.87	.85	.83
2.0	.90	.83	.77	.88	.82	.76	.84	.79	.74	.81	.77	.73	.78	.74	.71	.69
3.0	.79	.71	.64	.77	.70	.63	.74	.68	.62	.71	.66	.61	.69	.64	.60	.58
4.0	.70	.61	.54	.68	.60	.54	.66	.59	.53	.63	.57	.52	.61	.56	.51	.49
5.0	.62	.53	.46	.61	.53	.46	.59	.51	.46	.57	.50	.45	.55	.49	.45	.42
6.0	.56	.47	.41	.55	.47	.40	.53	.46	.40	.51	.45	.39	.50	.44	.39	.37
7.0	.51	.42	.36	.50	.42	.36	.48	.41	.35	.47	.40	.35	.45	.39	.35	.33
8.0	.46	.38	.32	.46	.37	.32	.44	.37	.31	.43	.36	.31	.42	.36	.31	.29
9.0	.42	.34	.29	.42	.34	.29	.41	.33	.28	.40	.33	.28	.38	.32	.28	.26
10.0	.39	.31	.26	.39	.31	.26	.38	.31	.26	.37	.30	.26	.36	.30	.25	.24



C Range: 0 - 360DEG
 C Interval: 30.0DEG
 Test Speed: HIGH
 Temperature:25.3DEG
 Operators:
 Test Date:2022-06-13

g Range: 0 - 180DEG
 g Interval: 1.0DEG
 Test System:EVERFINE GO-2000B_V1 SYSTEM V2.00.426
 Humidity:65.0%
 Test Distance:8.600m [K=1.0116]
 Remarks:

WEC AND CCEC

Test:U:120.16V I:0.1592A P:19.130W PF:0.9865 Freq:59.98Hz Lamp Flux:1688.1x1 lm		
NAME:	TYPE:	WEIGHT:
SPEC.:	DIM.:	SERIAL No.:
MFR.: ASD LIGHTNG CORP	SUR.: φ0.18	Shielding Angle:

r cc	80%			70%			50%			30%			10%			0
r w	50%	30%	10%	50%	30%	10%	50%	30%	10%	50%	30%	10%	50%	30%	10%	0
r fc	20%			20%			20%			20%			20%			0
RCR	RCR:Room Cavity Ratio						Wall Exitance Coefficients(WEC)									
0.0																
1.0	.313	.178	.056	.306	.174	.055	.292	.168	.054	.280	.161	.052	.268	.156	.050	
2.0	.294	.161	.049	.288	.159	.049	.276	.153	.048	.265	.149	.047	.255	.144	.045	
3.0	.272	.145	.043	.266	.143	.043	.256	.139	.042	.246	.135	.041	.237	.131	.041	
4.0	.251	.130	.038	.246	.129	.038	.236	.125	.037	.228	.122	.037	.220	.119	.036	
5.0	.232	.118	.034	.227	.117	.034	.219	.114	.034	.211	.111	.033	.204	.109	.033	
6.0	.215	.108	.031	.211	.106	.031	.203	.104	.030	.196	.102	.030	.190	.100	.030	
7.0	.200	.099	.028	.196	.098	.028	.189	.096	.028	.183	.094	.027	.177	.092	.027	
8.0	.186	.091	.026	.183	.090	.025	.177	.089	.025	.172	.087	.025	.166	.085	.025	
9.0	.175	.084	.024	.172	.084	.023	.166	.082	.023	.161	.081	.023	.157	.080	.023	
10.0	.164	.079	.022	.162	.078	.022	.157	.077	.022	.152	.076	.021	.148	.074	.021	

r cc	80%			70%			50%			30%			10%			0
r w	50%	30%	10%	50%	30%	10%	50%	30%	10%	50%	30%	10%	50%	30%	10%	0
r fc	20%			20%			20%			20%			20%			0
RCR	RCR:Room Cavity Ratio						Ceiling Cavity Exitance Coefficients(CCEC)									
0.0	.194	.194	.194	.166	.166	.166	.113	.113	.113	.065	.065	.065	.021	.021	.021	
1.0	.184	.160	.138	.157	.137	.118	.108	.094	.082	.062	.055	.048	.020	.018	.015	
2.0	.176	.135	.101	.151	.117	.087	.103	.081	.061	.060	.047	.036	.019	.015	.012	
3.0	.168	.118	.078	.144	.102	.067	.099	.071	.047	.057	.041	.028	.018	.013	.009	
4.0	.161	.105	.062	.138	.090	.054	.095	.063	.038	.055	.037	.022	.018	.012	.007	
5.0	.153	.094	.051	.132	.081	.044	.091	.057	.031	.053	.033	.018	.017	.011	.006	
6.0	.146	.086	.043	.126	.074	.037	.087	.052	.026	.050	.031	.016	.016	.010	.005	
7.0	.139	.079	.037	.120	.068	.032	.083	.048	.023	.048	.028	.013	.016	.009	.004	
8.0	.133	.073	.032	.114	.063	.028	.079	.045	.020	.046	.026	.012	.015	.009	.004	
9.0	.127	.068	.029	.109	.059	.025	.076	.042	.018	.044	.025	.011	.014	.008	.004	
10.0	.121	.064	.026	.104	.056	.023	.072	.039	.016	.042	.023	.010	.014	.008	.003	

C Range: 0 - 360DEG
 C Interval: 30.0DEG
 Test Speed: HIGH
 Temperature:25.3DEG
 Operators:
 Test Date:2022-06-13

g Range: 0 - 180DEG
 g Interval: 1.0DEG
 Test System:EVERFINE GO-2000B_V1 SYSTEM V2.00.426
 Humidity:65.0%
 Test Distance:8.600m [K=1.0116]
 Remarks:

UGR(Unified Glare Rating) Table

Test:U:120.16V I:0.1592A P:19.130W PF:0.9865 Freq:59.98Hz Lamp Flux:1688.1x1 lm										
NAME:			TYPE:			WEIGHT:				
SPEC.:			DIM.:			SERIAL No.:				
MFR.: ASD LIGHTNG CORP			SUR.: φ0.18			Shielding Angle:				
ceiling/cavity	0.7	0.7	0.5	0.5	0.3	0.7	0.7	0.5	0.5	0.3
walls	0.5	0.3	0.5	0.3	0.3	0.5	0.3	0.5	0.3	0.3
working plane	0.2	0.2	0.2	0.2	0.2	0.2	0.2	0.2	0.2	0.2
Room dimensions	Viewed crosswise					Viewed endwise				
x = 2H y = 2H	22.8	24.5	23.2	24.8	25.1	22.5	24.2	22.9	24.5	24.8
3H	24.7	26.2	25.1	26.6	26.9	24.4	25.9	24.8	26.2	26.6
4H	25.5	26.9	25.9	27.2	27.6	25.1	26.5	25.5	26.8	27.2
6H	26.1	27.4	26.5	27.8	28.2	25.6	26.9	26.0	27.2	27.6
8H	26.3	27.5	26.7	27.9	28.3	25.7	27.0	26.1	27.4	27.8
12H	26.4	27.6	26.9	28.0	28.4	25.8	27.0	26.2	27.4	27.8
4H 2H	23.5	24.9	23.9	25.2	25.6	23.1	24.6	23.6	24.9	25.3
3H	25.6	26.8	26.0	27.2	27.6	25.2	26.4	25.6	26.8	27.2
4H	26.5	27.6	26.9	28.0	28.4	26.0	27.1	26.5	27.5	28.0
6H	27.2	28.2	27.7	28.6	29.1	26.7	27.6	27.1	28.0	28.5
8H	27.5	28.4	28.0	28.8	29.3	26.8	27.7	27.3	28.2	28.6
12H	27.7	28.5	28.2	29.0	29.4	26.9	27.7	27.4	28.2	28.7
8H 4H	26.8	27.7	27.3	28.2	28.6	26.3	27.2	26.8	27.7	28.1
6H	27.7	28.4	28.2	28.9	29.4	27.1	27.8	27.6	28.3	28.8
8H	28.1	28.7	28.6	29.2	29.7	27.3	28.0	27.8	28.5	29.0
12H	28.3	28.9	28.9	29.4	30.0	27.4	28.0	28.0	28.5	29.1
12H 4H	26.9	27.7	27.4	28.1	28.6	26.4	27.2	26.9	27.6	28.1
6H	27.8	28.4	28.3	28.9	29.5	27.1	27.8	27.7	28.3	28.8
8H	28.2	28.8	28.7	29.3	29.8	27.4	28.0	27.9	28.5	29.1
CIE190: 2010										

CIE190: 2010
 Area: 0.0254 m2

C Range: 0 - 360DEG
 C Interval: 30.0DEG
 Test Speed: HIGH
 Temperature:25.3DEG
 Operators:
 Test Date:2022-06-13

g Range: 0 - 180DEG
 g Interval: 1.0DEG
 Test System:EVERFINE GO-2000B_V1 SYSTEM V2.00.426
 Humidity:65.0%
 Test Distance:8.600m [K=1.0116]
 Remarks:

UTILIZATION FACTORS TABLE

Test:U:120.16V I:0.1592A P:19.130W PF:0.9865 Freq:59.98Hz Lamp Flux:1688.1x1 lm		
NAME:	TYPE:	WEIGHT:
SPEC.:	DIM.:	SERIAL No.:
MFR.: ASD LIGHTNG CORP	SUR.: $\phi 0.18$	Shielding Angle:

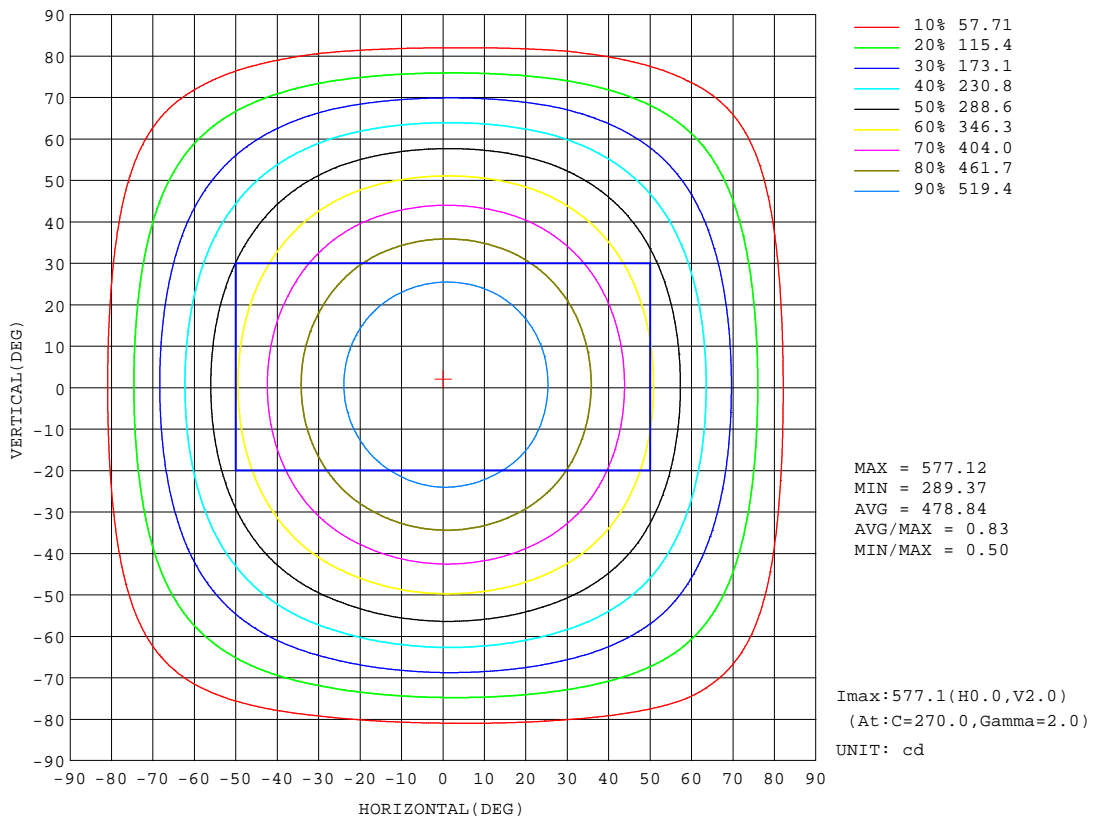
REFLECTANCE										
Ceiling	0.8	0.8	0.8	0.7	0.7	0.7	0.5	0.5	0.5	0
Walls	0.7	0.5	0.3	0.7	0.5	0.3	0.7	0.5	0.3	0
Working plane	0.2	0.2	0.2	0.2	0.2	0.2	0.2	0.2	0.2	0
ROOM INDEX	UTILIZATION FACTORS (PERCENT) $k(RI) \times RCR = 5$									
k = 0.60	57	45	38	56	45	38	55	45	38	32
0.80	67	55	48	66	55	48	64	54	47	40
1.00	75	64	57	74	64	57	72	65	56	49
1.25	83	72	65	81	71	64	78	70	63	56
1.50	88	78	71	86	77	70	83	75	69	61
2.00	95	86	79	93	85	79	89	82	77	69
2.50	98	91	84	96	89	84	92	86	82	73
3.00	102	95	89	100	93	88	96	90	86	77
4.00	106	100	95	104	98	94	99	95	91	82
5.00	108	104	99	106	102	98	101	98	95	85
ROOM INDEX	UF(total)									Direct
According to DIN EN 13032-2 2004			Suspended				SHRNOM = 1.25			

C Range: 0 - 360DEG
C Interval: 30.0DEG
Test Speed: HIGH
Temperature: 25.3DEG
Operators:
Test Date: 2022-06-13

g Range: 0 - 180DEG
g Interval: 1.0DEG
Test System: EVERFINE GO-2000B_V1 SYSTEM V2.00.426
Humidity: 65.0%
Test Distance: 8.600m [K=1.0116]
Remarks:

ISOCANDELA DIAGRAM

Test:U:120.16V I:0.1592A P:19.130W PF:0.9865 Freq:59.98Hz Lamp Flux:1688.1x1 lm		
NAME:	TYPE:	WEIGHT:
SPEC.:	DIM.:	SERIAL No.:
MFR.: ASD LIGHTNG CORP	SUR.: $\phi 0.18$	Shielding Angle:



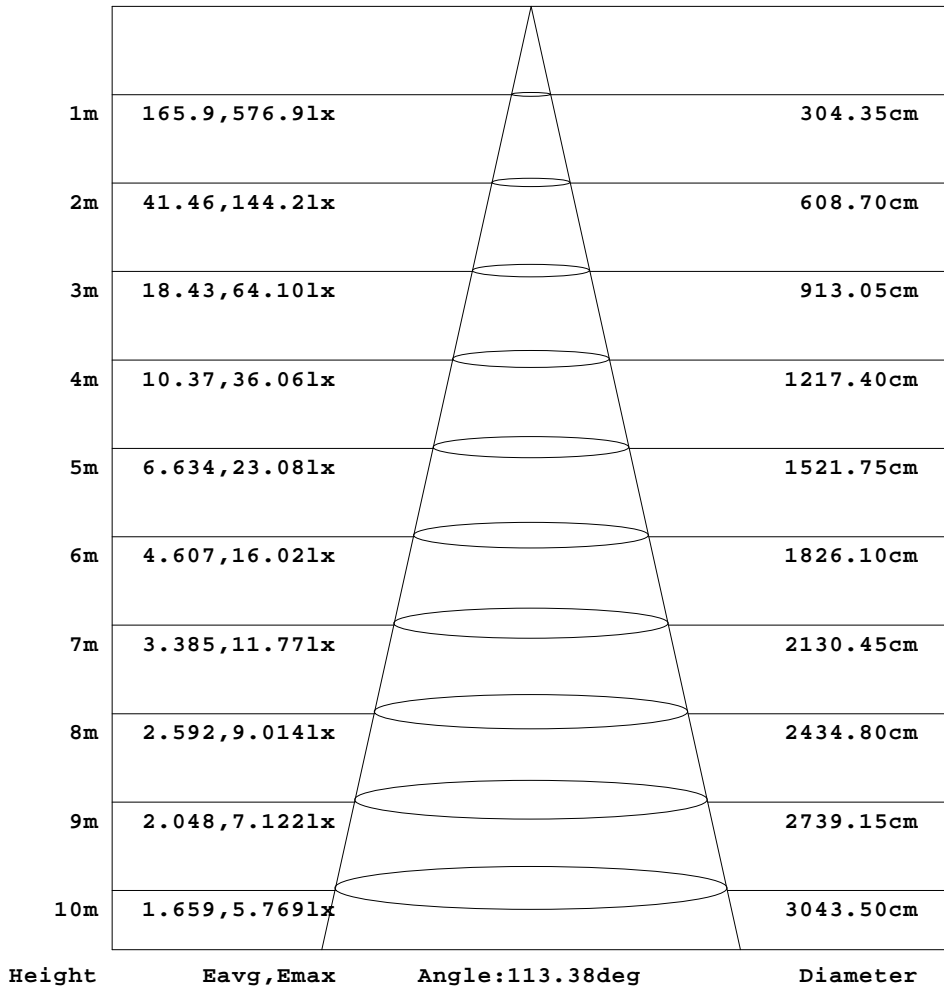
C Range: 0 - 360DEG
 C Interval: 30.0DEG
 Test Speed: HIGH
 Temperature:25.3DEG
 Operators:
 Test Date:2022-06-13

g Range: 0 - 180DEG
 g Interval: 1.0DEG
 Test System:EVERFINE GO-2000B_V1 SYSTEM V2.00.426
 Humidity:65.0%
 Test Distance:8.600m [K=1.0116]
 Remarks:

AAI Figure

Test:U:120.16V I:0.1592A P:19.130W PF:0.9865 Freq:59.98Hz Lamp Flux:1688.1x1 lm		
NAME:	TYPE:	WEIGHT:
SPEC.:	DIM.:	SERIAL No.:
MFR.: ASD LIGHTNG CORP	SUR.: ϕ 0.18	Shielding Angle:

Flux out:1236 lm



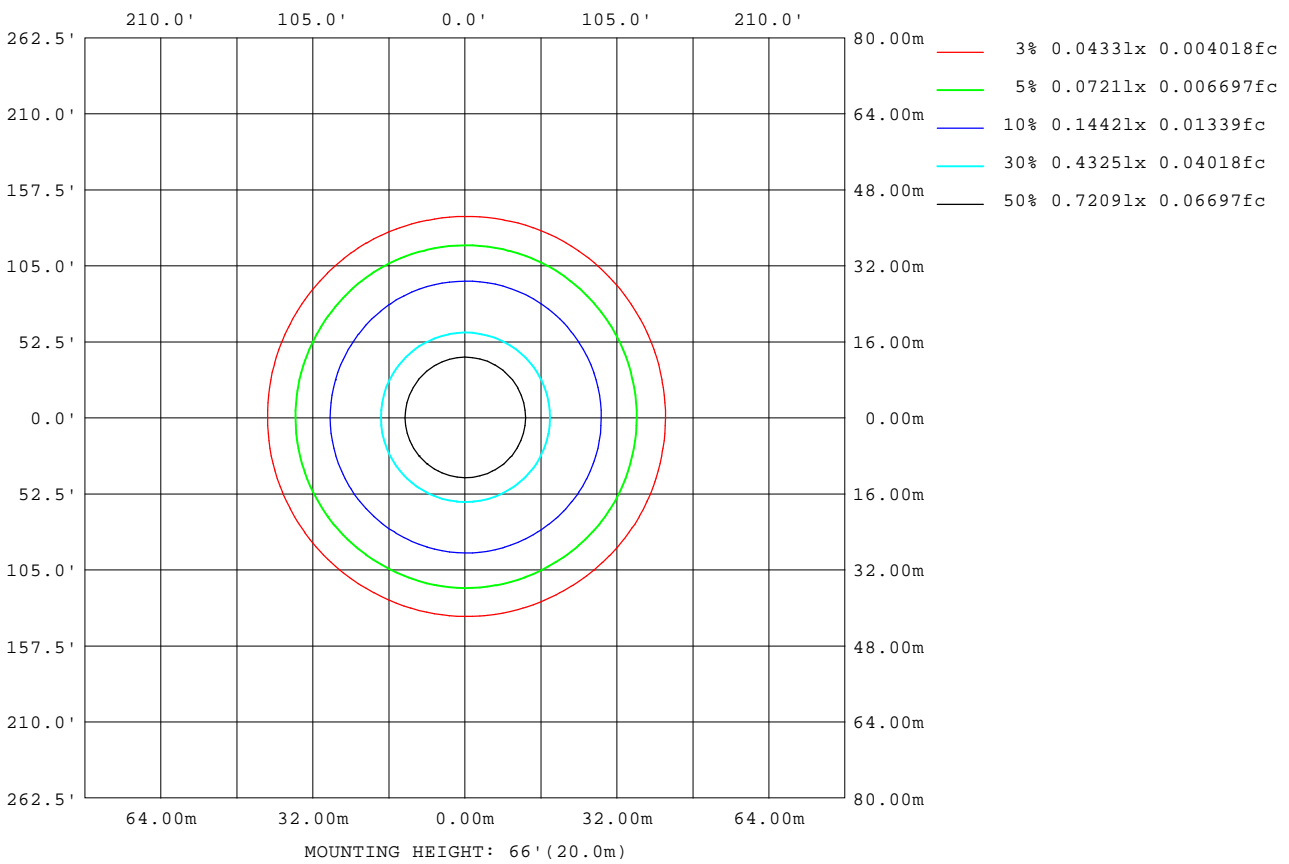
Note:The Curves indicate the illuminated area and the average illumination when the luminaire is at different distance.

C Range: 0 - 360DEG
 C Interval: 30.0DEG
 Test Speed: HIGH
 Temperature:25.3DEG
 Operators:
 Test Date:2022-06-13

g Range: 0 - 180DEG
 g Interval: 1.0DEG
 Test System:EVERFINE GO-2000B_V1 SYSTEM V2.00.426
 Humidity:65.0%
 Test Distance:8.600m [K=1.0116]
 Remarks:

ISOLUX DIAGRAM

Test:U:120.16V I:0.1592A P:19.130W PF:0.9865 Freq:59.98Hz Lamp Flux:1688.1x1 lm		
NAME:	TYPE:	WEIGHT:
SPEC.:	DIM.:	SERIAL No.:
MFR.: ASD LIGHTNG CORP	SUR.: ϕ 0.18	Shielding Angle:



C Range: 0 - 360DEG
 C Interval: 30.0DEG
 Test Speed: HIGH
 Temperature: 25.3DEG
 Operators:
 Test Date: 2022-06-13

g Range: 0 - 180DEG
 g Interval: 1.0DEG
 Test System: EVERFINE GO-2000B_V1 SYSTEM V2.00.426
 Humidity: 65.0%
 Test Distance: 8.600m [K=1.0116]
 Remarks:

LED Avg.L Report

Test:U:120.16V I:0.1592A P:19.130W PF:0.9865 Freq:59.98Hz Lamp Flux:1688.1x1 lm		
NAME:	TYPE:	WEIGHT:
SPEC.:	DIM.:	SERIAL No.:
MFR.: ASD LIGHTNG CORP	SUR.: ϕ 0.18	Shielding Angle:

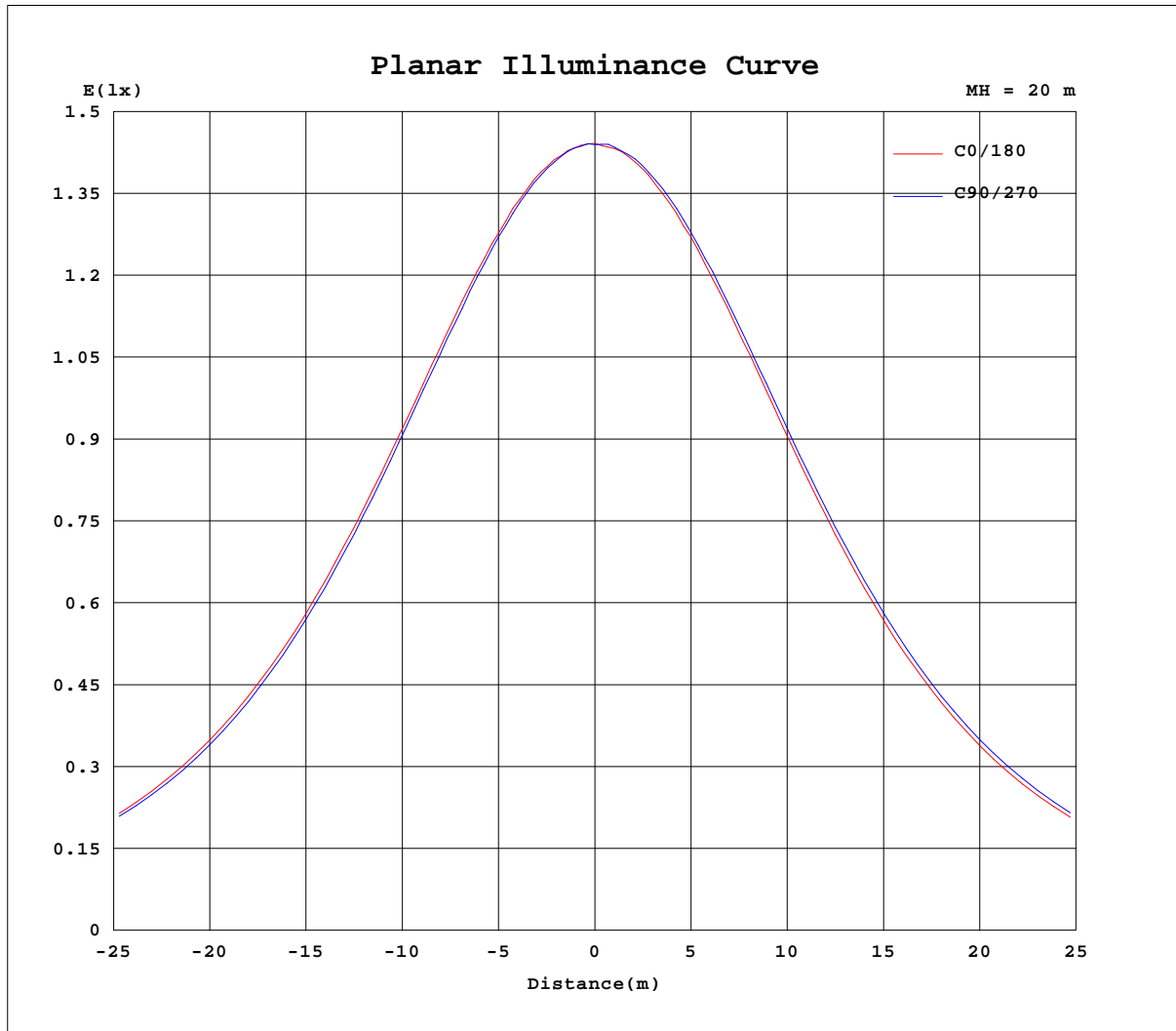
AvgL	cd/m2
L_0~180(65)av	19631
L_0~180(75)av	17942
L_0~180(85)av	13832
L_90~270(65)av	20012
L_90~270(75)av	18048
L_90~270(85)av	11136
L_45(65)av	19842
L_45(75)av	18084
L_45(85)av	12337

Standard: GB/T 29293-2012

C Range: 0 - 360DEG
C Interval: 30.0DEG
Test Speed: HIGH
Temperature:25.3DEG
Operators:
Test Date:2022-06-13

g Range: 0 - 180DEG
g Interval: 1.0DEG
Test System:EVERFINE GO-2000B_V1 SYSTEM V2.00.426
Humidity:65.0%
Test Distance:8.600m [K=1.0116]
Remarks:

Planar Illuminance Curve



C Range: 0 - 360DEG
 C Interval: 30.0DEG
 Test Speed: HIGH
 Temperature: 25.3DEG
 Operators:
 Test Date: 2022-06-13

g Range: 0 - 180DEG
 g Interval: 1.0DEG
 Test System: EVERFINE GO-2000B_V1 SYSTEM V2.00.426
 Humidity: 65.0%
 Test Distance: 8.600m [K=1.0116]
 Remarks:

LUMINOUS DISTRIBUTION INTENSITY DATA

Test:U:120.16V I:0.1592A P:19.130W PF:0.9865 Freq:59.98Hz Lamp Flux:1688.1x1 lm		
NAME:	TYPE:	WEIGHT:
SPEC.:	DIM.:	SERIAL No.:
MFR.: ASD LIGHTNG CORP	SUR.: φ0.18	Shielding Angle:

Table--1

UNIT: cd

C(DEG) g (DEG)	0	30	60	90	120	150	180	210	240	270	300	330						
0	576	576	576	576	576	576	576	576	576	576	576	576						
5	574	575	574	574	574	573	573	574	575	576	576	575						
10	568	569	566	567	566	565	565	567	567	570	570	570						
15	558	557	555	554	553	553	553	554	556	558	559	559						
20	542	542	538	537	535	535	536	537	540	543	543	543						
25	521	520	516	515	513	512	514	516	518	522	524	523						
30	496	495	490	488	485	486	487	490	494	496	499	498						
35	466	464	460	458	454	455	457	459	463	467	470	468						
40	432	430	426	424	420	419	422	424	429	433	436	435						
45	394	393	388	386	381	381	383	386	392	396	398	397						
50	353	352	347	345	340	339	342	345	351	355	358	356						
55	310	309	303	302	295	296	298	301	309	312	316	313						
60	264	264	258	256	250	250	252	256	264	267	270	267						
65	217	217	211	210	204	203	205	209	217	220	223	220						
70	169	170	164	161	157	156	158	162	170	172	175	173						
75	124	123	117	114	110	110	112	116	122	124	127	126						
80	78.1	77.8	70.9	66.6	63.9	65.2	66.5	68.0	74.6	76.1	79.4	75.8						
85	36.0	34.9	25.7	20.8	19.8	24.1	25.3	22.5	29.0	28.5	33.0	29.7						
90	2.49	0.28	0.25	0.23	0.25	0.28	0.25	0.28	0.24	0.25	0.23	0.89						
95	0.29	0.34	0.31	0.37	0.32	0.38	0.39	0.35	0.36	0.30	0.34	0.31						
100	0.43	0.51	0.46	0.51	0.46	0.53	0.56	0.52	0.52	0.59	0.59	0.47						
105	0.61	0.72	0.62	0.71	0.66	0.71	0.76	0.68	0.68	0.63	0.66	0.61						
110	0.81	0.95	0.80	0.87	0.84	0.88	0.93	0.90	0.85	0.81	0.83	0.78						
115	1.00	1.20	0.97	1.06	1.02	1.07	1.12	1.08	1.02	0.98	1.00	0.97						
120	1.20	1.43	1.16	1.24	1.21	1.25	1.31	1.27	1.19	1.18	1.17	1.13						
125	1.36	1.48	1.28	1.42	1.37	1.46	1.49	1.44	1.33	1.32	1.32	1.29						
130	1.53	1.59	1.43	1.60	1.49	1.52	1.60	1.49	1.49	1.47	1.45	1.45						
135	1.67	1.76	1.55	1.63	1.59	1.74	1.68	1.69	1.65	1.59	1.59	1.60						
140	1.79	1.73	1.69	1.73	1.69	1.75	1.89	1.79	1.80	1.73	1.72	1.66						
145	1.80	1.82	1.77	1.84	1.92	1.85	1.90	1.82	1.83	1.87	1.81	1.75						
150	1.87	1.91	1.89	1.95	1.94	1.96	1.99	1.95	2.10	1.90	1.98	1.84						
155	1.96	1.99	1.96	2.05	2.01	2.03	2.11	2.05	2.02	2.01	1.99	1.95						
160	2.06	2.27	2.12	2.16	2.13	2.14	2.44	2.15	2.14	2.11	2.11	2.07						
165	2.14	2.16	2.22	2.29	2.21	2.24	2.29	2.49	2.48	2.23	2.23	2.17						
170	2.26	2.25	2.33	2.34	2.27	2.33	2.36	2.61	2.57	2.34	2.34	2.26						
175	2.36	2.40	2.43	2.41	2.40	2.42	2.44	2.48	2.45	2.40	2.42	2.46						
180	2.47	2.45	2.45	2.47	2.47	2.42	2.48	2.48	2.47	2.46	2.46	2.44						

C Range: 0 - 360DEG
 C Interval: 30.0DEG
 Test Speed: HIGH
 Temperature:25.3DEG
 Operators:
 Test Date:2022-06-13

g Range: 0 - 180DEG
 g Interval: 1.0DEG
 Test System:EVERFINE GO-2000B_V1 SYSTEM V2.00.426
 Humidity:65.0%
 Test Distance:8.600m [K=1.0116]
 Remarks: