



LED METAL RING FLUSHMOUNT

► **DESIGN & OPTIONS** - LED METAL RING FLUSHMOUNT has a modern, multipurpose design and a stylish look with efficient lighting. It also possesses smooth dimming capabilities ranging from 10% to 100% with modern LED dimmers. With the color selectable option, you can change the color temperature from 3,000K, to 4,000K, to 5,000K with a simple switch. The 120° beam angle grants you smooth and even lighting. It comes in 11", 13" and 15" with a BRUSHED NICKEL finish.

► **INSTALLATION** - Installation is quick and easy: just drive the screws into the outlet box, connect the wires and fix the lamp body on screws. Wire nuts, screws and all installation accessories are provided. Refer to install instructions for detailed steps.

► **APPLICATION** - The LED METAL RING FLUSHMOUNT provides bright, yet smooth lighting for your family room, bedroom, hallway, corridor, or any other common area in your living space. It can be used as an additional light to an already existing ceiling light as well. This fixture is also Damp Locations rated.

► **ENERGY SAVINGS & EFFICIENCY** - With a lifespan of 50,000 hours, these fixtures are made to last decades under normal operation! This fixture can cut your electric bill by up to 80% instantly and will save you a significant amount of money in its lifetime.

► **CERTIFICATION & WARRANTY** - Buy with confidence: ASD provides a 5-year limited warranty along with ETL certification to guarantee top quality products and safety!

Energy Star classification allow participation in rebates; please check the rebate programs available in your state.

Catalog number	
Notes	
Type	



Model	Size	Watts	Voltage	Dimmable	Lumens	CCT	Finish	Dimensions (LxWxH)
ASD-LFMMR-11D16CC-NK	11 inch	16W	120 V	TRIAC	1,061/1,172/1,122 lm	3CCT (3,000/4,000/5,000 K)	Brushed nickel	11" x 11" x 3"
ASD-LFMMR-13D20CC-NK	13 inch	20W	120 V	TRIAC	1,400/1,738/1,671 lm	3CCT (3,000/4,000/5,000 K)	Brushed nickel	13" x 13" x 3-3/4"
ASD-LFMMR-15D25CC-NK	15 inch	25W	120 V	TRIAC	1,800/2,215/2,167 lm	3CCT (3,000/4,000/5,000 K)	Brushed nickel	15" x 15" x 4"

ORDERING INFORMATION

Model	UPC	Pcs. per carton	Carton size	Carton weight	GTIN 14
ASD-LFMMR-11D16CC-NK	810050734141	4	18.5" x 13" x 13.2"	10.1 lb	10810050734148
ASD-LFMMR-13D20CC-NK	810050734158	4	21.7" x 15.2" x 15.2"	13.4 lb	10810050734155
ASD-LFMMR-15D25CC-NK	810050734165	4	23" x 17.1" x 17.1"	16.2 lb	10810050734162

For most up-to-date spec sheets please refer to asd-lighting.com

ASD LIGHTING CORP

E-mail: orders@asd-lighting.com | Web site: www.asd-lighting.com





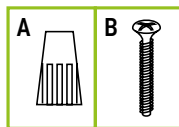
LED METAL RING FLUSHMOUNT

PRODUCT SPECIFICATIONS:

Construction & Materials			
Diffuser	White acrylic		
Housing	Steel		
Finish	Brushed nickel		
Weight	ASD-LFMMR-11D16CC-NK	1.5 lb (0.7 kg)	
	ASD-LFMMR-13D20CC-NK	2.1 lb (0.9 kg)	
	ASD-LFMMR-15D25CC-NK	2.5 lb (1.1 kg)	
Environmental system			
Work environment	Suitable for Damp Locations		
Operating temperature	-4°F to 113°F (-20°C to 45°C)		
L-70 life	> 50,000 hrs		
Optical system			
Luminous flux	ASD-LFMMR-11D16CC-NK	1,061/1,172/1,122 lm	
	ASD-LFMMR-13D20CC-NK	1,400/1,738/1,671 lm	
	ASD-LFMMR-15D25CC-NK	1,800/2,215/2,167 lm	
Color temperature	3CCT (3,000/4,000/5,000 K)		
CRI	> 80		
Electrical system			
Input voltage	120 V		
Max input current	ASD-LFMMR-11D16CC-NK	0.2 A	
	ASD-LFMMR-13D20CC-NK		
	ASD-LFMMR-15D25CC-NK	0.25 A	
Inrush current (Action time)	ASD-LFMMR-11D16CC-NK	0.15 A (0.5 S)	
	ASD-LFMMR-13D20CC-NK	0.18 A (0.5 S)	
	ASD-LFMMR-15D25CC-NK	0.2 A (0.5 S)	
Off state power	0W		
Power consumption	ASD-LFMMR-11D16CC-NK	16W	
	ASD-LFMMR-13D20CC-NK	20W	
	ASD-LFMMR-15D25CC-NK	25W	
Power factor	> 0.9		
Surge protection DM/CM	1.25 kV / 1.25 kV		
Dimming range			
10-100%			
Dimming compatible controls			
Brand	Lutron		
Models	MACL-153MLH	TGCL-153P	P-PKG1W
	DVCL-153PR	CTCL-153P	PD-6WCL
	STCL-153PH		
Leviton			
Models			DSL06
			RNL06
Regular and voluntary certifications			
5-year limited warranty			
Energy Star listed			
cETLus certified 4001256			

PACKAGE CONTENTS:

Description	Q-ty
LED Metal Ring Flushmount	1
Wire nut (A)	3
Screw (B)	2
Box	1



INSTALLATION GUIDE

IMPORTANT SAFETY INFORMATION:

Please read all the instructions below before installation.

- Make sure that the supply voltage corresponds to the rated product voltage.
- The product must be installed by a qualified electrician in accordance with the National Electrical Code and corresponding local codes.
- If the product is damaged, do not use it.

WARNING

RISK OF PERSONAL INJURY – READ and follow all WARNINGS and installation instructions. Keep or give to the owner for future reference.

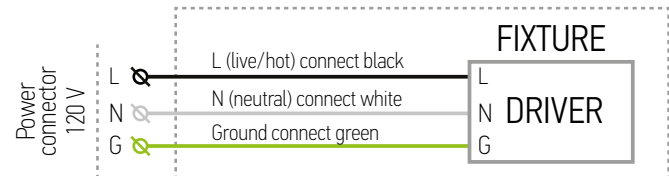
Risk of cuts: Wear gloves to prevent cuts or abrasions when removing from carton, handling, installing, and maintaining this product.

Risk of electric shock: This product must be installed in accordance with the applicable installation code by a person familiar with the construction and operation of the product and the hazards involved.

Risk of Fire: Minimum 194°F supply conductors. Consult a qualified electrician to ensure correct branch circuit conductor.

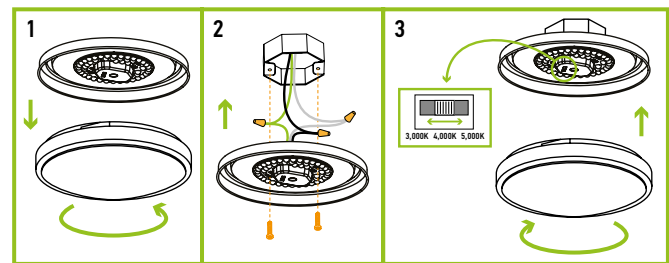
ASD® assumes no responsibility for claims arising out of improper or careless installation or handling of this product.

ELECTRICAL SCHEMATIC DIAGRAM:



INSTALLATION STEPS:

- Remove the lens by rotating it counter clockwise.
- Attach two screws to the outlet box. Connect the wires: Black to Black, White to White, Ground to Ground. Secure the connection with wire nuts. Carefully tuck all the wires back into the outlet box.
- Choose either 3,000K, 4,000K or 5,000K with a simple switch. Place the fixture pan over the outlet box and feed the screws through keyhole slots. Rotate the fixture pan until the screws lock into the narrow end of the keyhole slots and tighten screws firmly. Secure the lens to the fixture pan by rotating it clockwise.



For most up-to-date spec sheets please refer to asd-lighting.com

ASD LIGHTING CORP

E-mail: orders@asd-lighting.com | Web site: www.asd-lighting.com

