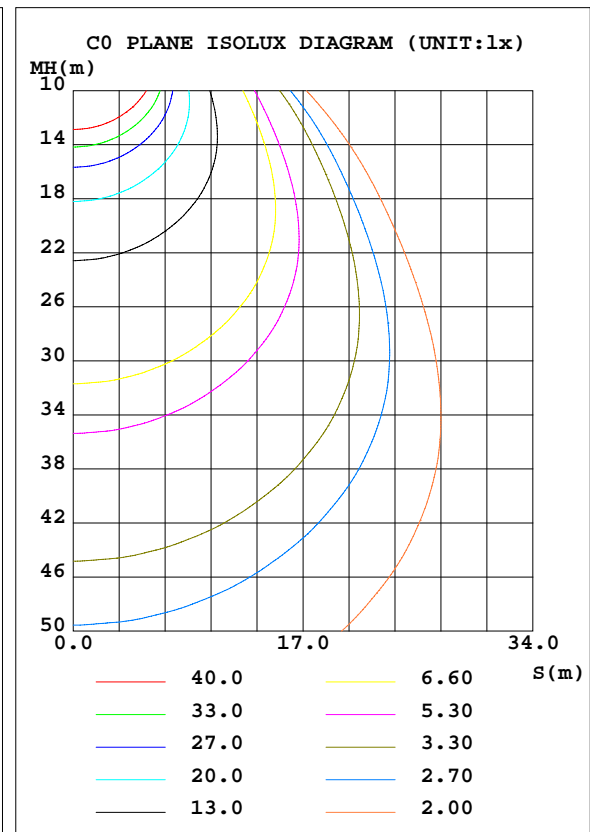
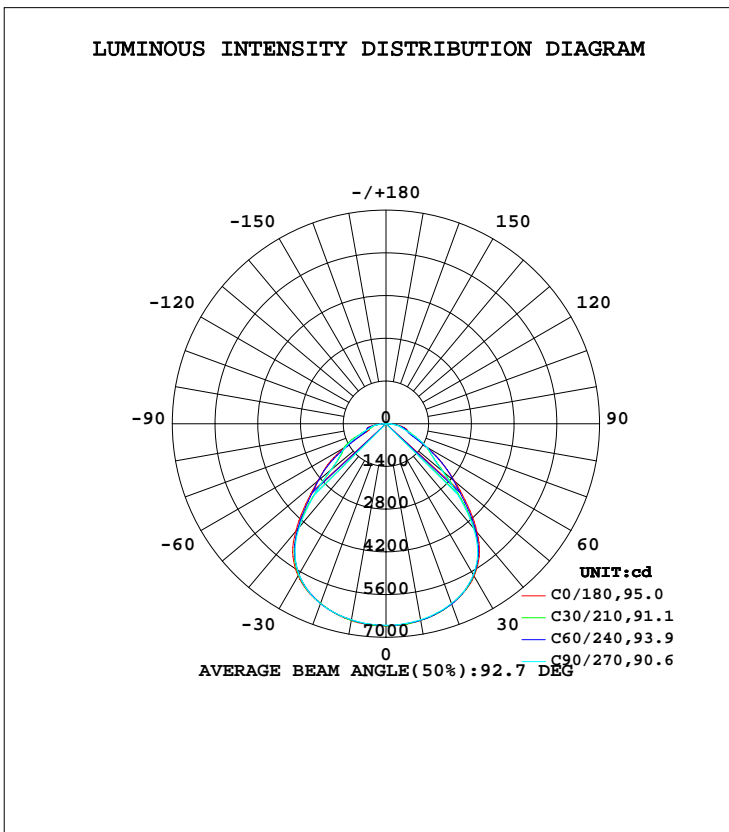


LUMINAIRE PHOTOMETRIC TEST REPORT

Test:U:120.00V I:0.9080A P:108.56W PF:0.9963 Freq:60.00Hz Lamp Flux:14960x1 lm		
NAME: ASD Lighting Corp	TYPE: LED	WEIGHT:
SPEC.: ASD-WHB7-2D11050	DIM.:	SERIAL No.:
MFR.: ASD Lighting Corp	SUR.:	Shielding Angle:

DATA OF LAMP		PHOTOMETRIC DATA Eff: 137,81 lm/W			
MODEL	ASD-WHB7-2D11050	I <sub>max</sub> (cd)	6630	S/MH(C0/180)	1.28
NOMINAL POWER(W)	110	LOR(%)	100.0	S/MH(C90/270)	1.27
RATED VOLTAGE(V)	120-277	TOTAL FLUX(lm)	14960	η UP, DN(C0-180)	0.1,50.0
NOMINAL FLUX(lm)	14960	CIE CLASS	DIRECT	η UP, DN(C180-360)	0.1,49.8
LAMPS INSIDE	1	η up(%)	0.2	CIBSE SHR NOM	1.25
TEST VOLTAGE(V)	120	η down(%)	99.8	CIBSE SHR MAX	1.35



C Range: 0 - 360DEG  
 C Interval: 15.0DEG  
 Test Speed: HIGH  
 Temperature: 25.0DEG  
 Operators: Alan Wang  
 Test Date: 01 November 2021

γ Range: 0 - 180DEG  
 γ Interval: 1.0DEG  
 Test System: EVERFINE GO-R5000\_V2 SYSTEM V2.00.416  
 Humidity: 44.8%  
 Test Distance: 2.500m [K=1.0405]  
 Remarks:

## ZONAL FLUX DIAGRAM

## ZONAL FLUX DIAGRAM:

$\gamma$	C0	C45	C90	C135	C180	C225	C270	C315	$\gamma$	$\Phi$ zone	$\Phi$ total	%lum,lamp
10	6547	6536	6523	6519	6545	6533	6522	6518	0- 10	626.9	626.9	4.14,4.14
20	6285	6282	6270	6248	6275	6260	6273	6263	10- 20	1814	2441	16.1,16.1
30	5772	5737	5721	5697	5756	5708	5705	5710	20- 30	2783	5224	34.5,34.5
40	4649	4524	4462	4476	4602	4471	4412	4483	30- 40	3253	8477	56,56
50	2943	2730	2404	2640	2917	2686	2375	2695	40- 50	2729	11206	74,74
60	1572	1642	1545	1589	1584	1597	1538	1634	50- 60	1854	13060	86.2,86.2
70	799.7	874.7	769.2	916.1	587.4	897.2	759.3	866.3	60- 70	1138	14198	93.7,93.7
80	513.3	437.1	420.1	420.5	519.3	408.5	417.8	441.0	70- 80	667.7	14865	98.1,98.1
90	11.37	14.42	53.63	13.90	32.02	28.89	28.63	33.57	80- 90	250.4	15116	99.8,99.8
100	1.071	0.9168	0.8701	1.010	1.522	1.401	1.301	1.435	90-100	4.258	15120	99.8,99.8
110	2.225	2.264	2.072	2.179	2.359	2.502	2.656	2.831	100-110	2.016	15122	99.8,99.8
120	2.663	4.119	3.528	3.673	3.078	4.760	4.452	4.637	110-120	3.291	15125	99.9,99.9
130	3.718	4.463	4.629	4.136	4.425	5.572	6.197	5.733	120-130	4.475	15130	99.9,99.9
140	4.790	5.612	5.519	4.747	5.749	6.888	7.368	6.730	130-140	4.482	15134	99.9,99.9
150	6.038	6.929	5.939	6.113	6.789	7.642	7.627	8.839	140-150	4.368	15139	100,100
160	6.624	9.194	6.472	6.963	8.209	8.595	8.418	11.97	150-160	3.621	15142	100,100
170	11.59	9.552	7.481	7.827	9.730	9.471	8.945	8.376	160-170	2.579	15145	100,100
180	7.428	7.726	6.898	8.360	7.853	7.904	7.358	7.394	170-180	0.7967	15146	100,100
DEG	LUMINOUS INTENSITY:cd									UNIT:lm		

Conical surface Flux(90deg): 9967.8 lm

%lum = 65.8%

%lamp = 65.8%

Conical surface Flux(120deg): 13060 lm

%lum = 86.2%

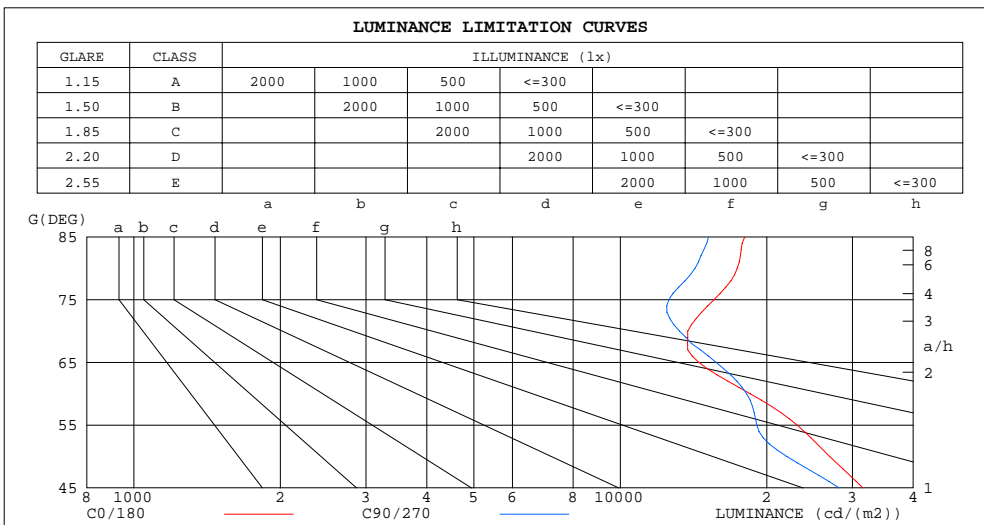
%lamp = 86.2%

C Range: 0 - 360DEG  
 C Interval: 15.0DEG  
 Test Speed: HIGH  
 Temperature: 25.0DEG  
 Operators: Alan Wang  
 Test Date: 01 November 2021

$\gamma$  Range: 0 - 180DEG  
 $\gamma$  Interval: 1.0DEG  
 Test System: EVERFINE GO-R5000\_V2 SYSTEM V2.00.416  
 Humidity: 44.8%  
 Test Distance: 2.500m [K=1.0405]  
 Remarks:

LUMINANCE LIMITATION CURVES

Test:U:120.00V I:0.9080A P:108.56W PF:0.9963 Freq:60.00Hz Lamp Flux:14960x1 lm		
NAME: ASD Lighting Corp	TYPE: LED	WEIGHT:
SPEC.:	DIM.:	SERIAL No.:
MFR.: ASD Lighting Corp	SUR.:	Shielding Angle:



LUMINANCE cd/(m2)		
G(DEG)	C0/180	C90/270
85	18014	15168
80	17393	14236
75	15581	12578
70	13759	13233
65	14506	15744
60	18502	18180
55	23108	19081
50	26945	22007
45	31510	28180

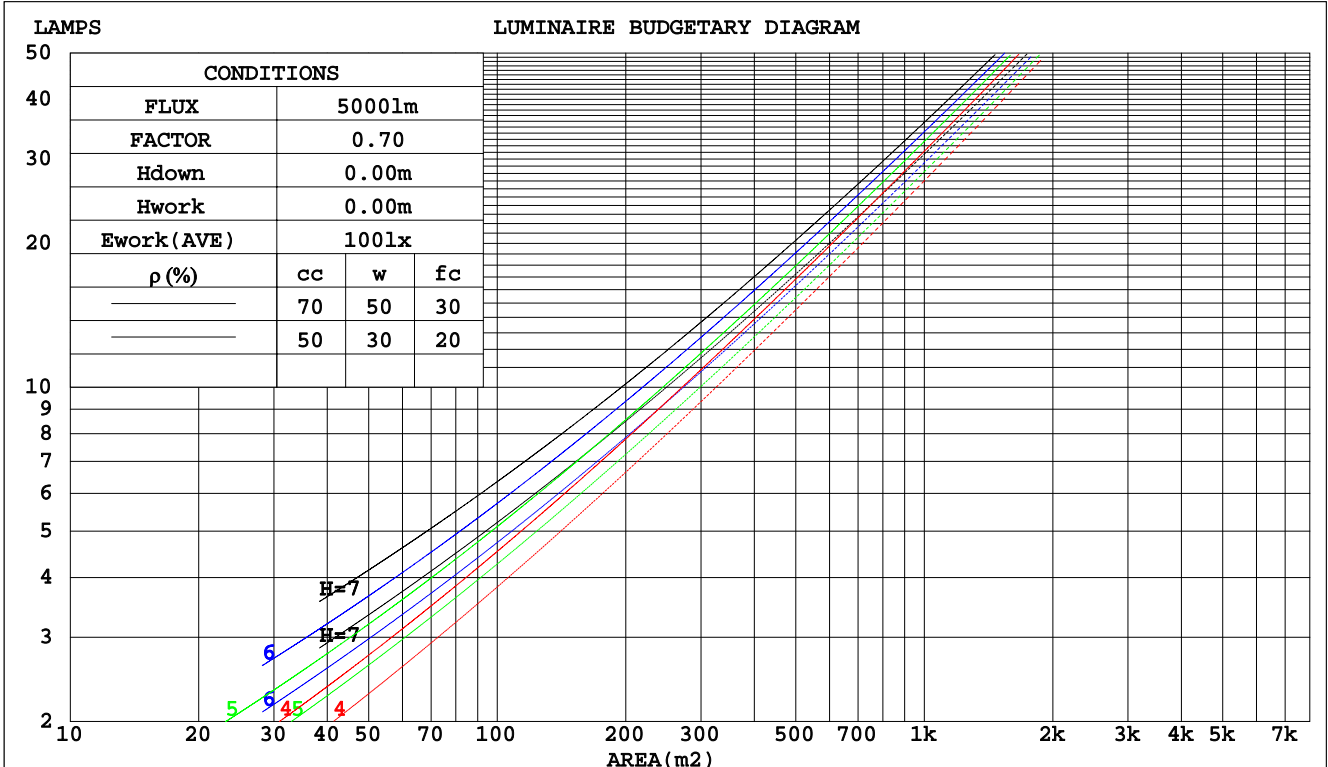
C Range: 0 - 360DEG  
 C Interval: 15.0DEG  
 Test Speed: HIGH  
 Temperature: 25.0DEG  
 Operators: Alan Wang  
 Test Date: 01 November 2021

$\gamma$  Range: 0 - 180DEG  
 $\gamma$  Interval: 1.0DEG  
 Test System: EVERFINE GO-R5000\_V2 SYSTEM V2.00.416  
 Humidity: 44.8%  
 Test Distance: 2.500m [K=1.0405]  
 Remarks:

CU AND LUMINAIRE BUDGETARY ESTIMATE DIAGRAM

Test:U:120.00V I:0.9080A P:108.56W PF:0.9963 Freq:60.00Hz Lamp Flux:14960x1 lm		
NAME: ASD Lighting Corp	TYPE: LED	WEIGHT:
SPEC.:	DIM.:	SERIAL No.:
MFR.: ASD Lighting Corp	SUR.:	Shielding Angle:

pcc	80%			70%			50%			30%			10%			0
	50%	30%	10%	50%	30%	10%	50%	30%	10%	50%	30%	10%	50%	30%	10%	0
pw																
pfc	20%			20%			20%			20%			20%			0
RCR	RCR:Room Cavity Ratio						Coefficients of Utilization(CU)									
0.0	1.19	1.19	1.19	1.16	1.16	1.16	1.11	1.11	1.11	1.06	1.06	1.06	1.02	1.02	1.02	.00
1.0	1.06	1.02	.98	1.03	.00	.97	.99	.96	.94	.95	.93	.91	.92	.90	.88	.86
2.0	.94	.88	.82	.92	.86	.82	.88	.84	.80	.85	.81	.78	.82	.79	.76	.74
3.0	.84	.76	.70	.82	.75	.70	.79	.73	.68	.76	.71	.67	.74	.70	.66	.64
4.0	.75	.67	.61	.74	.66	.60	.71	.65	.60	.69	.63	.59	.67	.62	.58	.56
5.0	.68	.60	.53	.67	.59	.53	.65	.58	.53	.63	.57	.52	.61	.56	.51	.49
6.0	.62	.53	.47	.61	.53	.47	.59	.52	.47	.57	.51	.46	.56	.50	.46	.44
7.0	.56	.48	.42	.55	.48	.42	.54	.47	.42	.52	.46	.42	.51	.46	.41	.39
8.0	.52	.44	.38	.51	.43	.38	.50	.43	.38	.48	.42	.37	.47	.42	.37	.35
9.0	.48	.40	.35	.47	.40	.34	.46	.39	.34	.45	.39	.34	.44	.38	.34	.32
10.0	.44	.36	.31	.43	.36	.31	.43	.36	.31	.42	.35	.31	.41	.35	.31	.29



C Range: 0 - 360DEG  
 C Interval: 15.0DEG  
 Test Speed: HIGH  
 Temperature: 25.0DEG  
 Operators: Alan Wang  
 Test Date: 01 November 2021

γ Range: 0 - 180DEG  
 γ Interval: 1.0DEG  
 Test System: EVERFINE GO-R5000\_V2 SYSTEM V2.00.416  
 Humidity: 44.8%  
 Test Distance: 2.500m [K=1.0405]  
 Remarks:

WEC AND CCEC

Test:U:120.00V I:0.9080A P:108.56W PF:0.9963 Freq:60.00Hz Lamp Flux:14960x1 lm		
NAME: ASD Lighting Corp	TYPE: LED	WEIGHT:
SPEC.:	DIM.:	SERIAL No.:
MFR.: ASD Lighting Corp	SUR.:	Shielding Angle:

ρcc	80%			70%			50%			30%			10%			0
ρw	50%	30%	10%	50%	30%	10%	50%	30%	10%	50%	30%	10%	50%	30%	10%	0
ρfc	20%			20%			20%			20%			20%			0
RCR	RCR:Room Cavity Ratio						Wall Exitance Coefficients(WEC)									
0.0																
1.0	.275	.156	.050	.268	.153	.049	.255	.146	.047	.242	.140	.045	.231	.134	.043	
2.0	.260	.142	.044	.253	.140	.043	.242	.135	.042	.231	.130	.041	.221	.125	.039	
3.0	.242	.129	.039	.237	.127	.038	.227	.123	.037	.217	.119	.037	.209	.116	.036	
4.0	.226	.117	.035	.221	.116	.034	.212	.113	.034	.204	.109	.033	.196	.107	.032	
5.0	.211	.107	.031	.207	.106	.031	.199	.103	.030	.191	.101	.030	.184	.099	.030	
6.0	.197	.099	.028	.193	.098	.028	.186	.096	.028	.180	.093	.027	.174	.091	.027	
7.0	.185	.091	.026	.182	.090	.026	.175	.089	.026	.169	.087	.025	.164	.085	.025	
8.0	.174	.085	.024	.171	.084	.024	.165	.083	.024	.160	.081	.023	.155	.080	.023	
9.0	.164	.079	.022	.161	.079	.022	.156	.077	.022	.151	.076	.022	.147	.075	.022	
10.0	.155	.074	.021	.152	.074	.021	.148	.072	.020	.144	.071	.020	.139	.070	.020	

ρcc	80%			70%			50%			30%			10%			0
ρw	50%	30%	10%	50%	30%	10%	50%	30%	10%	50%	30%	10%	50%	30%	10%	0
ρfc	20%			20%			20%			20%			20%			0
RCR	RCR:Room Cavity Ratio						Ceiling Cavity Exitance Coefficients(CCEC)									
0.0	.192	.192	.192	.164	.164	.164	.112	.112	.112	.064	.064	.064	.021	.021	.021	
1.0	.179	.158	.139	.154	.136	.119	.105	.093	.083	.060	.054	.048	.019	.017	.016	
2.0	.169	.134	.103	.145	.115	.089	.099	.080	.062	.057	.046	.037	.018	.015	.012	
3.0	.161	.116	.080	.138	.100	.069	.095	.069	.048	.055	.040	.029	.018	.013	.009	
4.0	.153	.102	.063	.131	.088	.055	.090	.061	.039	.052	.036	.023	.017	.012	.008	
5.0	.145	.091	.052	.125	.079	.045	.086	.055	.032	.050	.032	.019	.016	.011	.006	
6.0	.138	.083	.043	.119	.072	.038	.082	.050	.027	.048	.030	.016	.015	.010	.005	
7.0	.132	.076	.037	.113	.066	.032	.078	.046	.023	.045	.027	.013	.015	.009	.004	
8.0	.126	.070	.032	.108	.061	.028	.075	.043	.020	.044	.025	.012	.014	.008	.004	
9.0	.120	.065	.028	.103	.056	.024	.072	.040	.017	.042	.023	.010	.014	.008	.003	
10.0	.115	.061	.025	.099	.053	.022	.069	.037	.015	.040	.022	.009	.013	.007	.003	

C Range: 0 - 360DEG  
 C Interval: 15.0DEG  
 Test Speed: HIGH  
 Temperature: 25.0DEG  
 Operators: Alan Wang  
 Test Date: 01 November 2021

γ Range: 0 - 180DEG  
 γ Interval: 1.0DEG  
 Test System: EVERFINE GO-R5000\_V2 SYSTEM V2.00.416  
 Humidity: 44.8%  
 Test Distance: 2.500m [K=1.0405]  
 Remarks:

UGR(Unified Glare Rating) Table

Test:U:120.00V I:0.9080A P:108.56W PF:0.9963 Freq:60.00Hz Lamp Flux:14960x1 lm										
NAME: ASD Lighting Corp					TYPE: LED			WEIGHT:		
SPEC.:					DIM.:			SERIAL No.:		
MFR.: ASD Lighting Corp					SUR.:			Shielding Angle:		
ceiling/cavity	0.7	0.7	0.5	0.5	0.3	0.7	0.7	0.5	0.5	0.3
walls	0.5	0.3	0.5	0.3	0.3	0.5	0.3	0.5	0.3	0.3
working plane	0.2	0.2	0.2	0.2	0.2	0.2	0.2	0.2	0.2	0.2
Room dimensions	Viewed crosswise					Viewed endwise				
x = 2H y = 2H	21.4	22.9	21.8	23.2	23.6	21.8	23.2	22.1	23.6	23.9
3H	23.0	24.3	23.4	24.6	25.0	23.0	24.3	23.4	24.7	25.0
4H	23.6	24.9	24.0	25.2	25.6	23.5	24.8	23.9	25.1	25.5
6H	24.3	25.4	24.7	25.8	26.2	24.0	25.1	24.4	25.5	25.9
8H	24.5	25.6	24.9	26.0	26.4	24.2	25.3	24.6	25.7	26.1
12H	24.7	25.8	25.2	26.2	26.6	24.4	25.4	24.8	25.8	26.2
4H 2H	21.9	23.2	22.3	23.5	23.9	22.2	23.4	22.6	23.8	24.1
3H	23.6	24.6	24.0	25.1	25.5	23.5	24.6	24.0	25.0	25.4
4H	24.4	25.3	24.8	25.8	26.2	24.3	25.2	24.7	25.6	26.1
6H	25.2	26.0	25.6	26.4	26.9	25.0	25.8	25.4	26.2	26.7
8H	25.5	26.2	26.0	26.7	27.2	25.2	26.0	25.7	26.4	26.9
12H	25.8	26.4	26.3	26.9	27.4	25.5	26.1	25.9	26.6	27.1
8H 4H	24.7	25.4	25.1	25.9	26.3	24.6	25.3	25.0	25.8	26.3
6H	25.6	26.2	26.1	26.7	27.2	25.5	26.1	26.0	26.6	27.1
8H	26.0	26.6	26.5	27.1	27.6	25.8	26.4	26.4	26.9	27.4
12H	26.4	26.9	26.9	27.4	28.0	26.2	26.7	26.7	27.2	27.7
12H 4H	24.7	25.4	25.2	25.9	26.3	24.6	25.3	25.1	25.8	26.2
6H	25.7	26.2	26.2	26.7	27.2	25.5	26.1	26.1	26.6	27.1
8H	26.1	26.6	26.7	27.1	27.7	26.0	26.5	26.5	27.0	27.5
CIE190: 2010										

CIE190: 2010  
Area: 0.16994 m2

C Range: 0 - 360DEG	γ Range: 0 - 180DEG
C Interval: 15.0DEG	γ Interval: 1.0DEG
Test Speed: HIGH	Test System:EVERFINE GO-R5000_V2 SYSTEM V2.00.416
Temperature: 25.0DEG	Humidity: 44.8%
Operators:Alan Wang	Test Distance:2.500m [K=1.0405]
Test Date:01 November 2021	Remarks:

## UTILIZATION FACTORS TABLE

Test:U:120.00V I:0.9080A P:108.56W PF:0.9963 Freq:60.00Hz Lamp Flux:14960x1 lm		
NAME: ASD Lighting Corp	TYPE: LED	WEIGHT:
SPEC.:	DIM.:	SERIAL No.:
MFR.: ASD Lighting Corp	SUR.:	Shielding Angle:

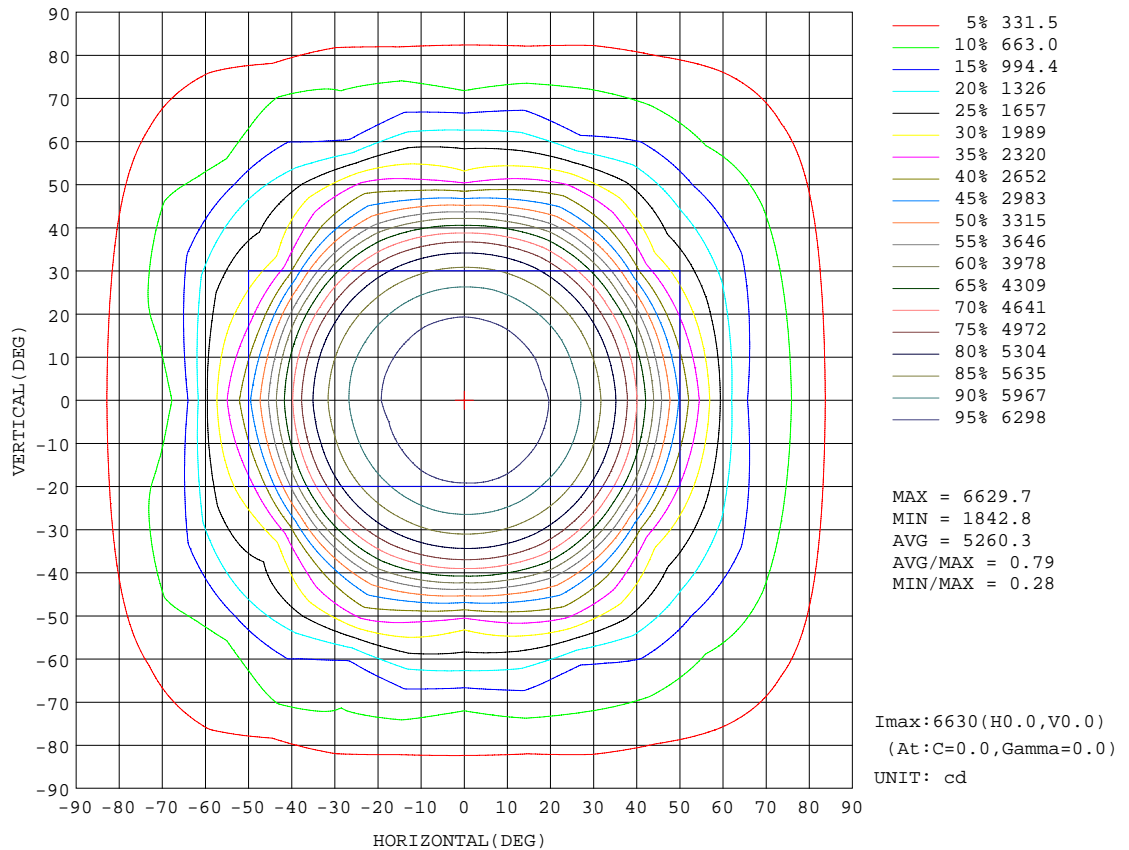
REFLECTANCE										
Ceiling	0.8	0.8	0.8	0.7	0.7	0.7	0.5	0.5	0.5	0
Walls	0.7	0.5	0.3	0.7	0.5	0.3	0.7	0.5	0.3	0
Working plane	0.2	0.2	0.2	0.2	0.2	0.2	0.2	0.2	0.2	0
ROOM INDEX	UTILIZATION FACTORS(PERCENT) $k(RI) \times RCR = 5$									
k = 0.60	64	54	47	63	53	47	62	53	47	41
0.80	74	64	57	73	63	57	71	63	57	50
1.00	82	72	66	81	72	66	79	73	65	59
1.25	88	79	73	87	79	73	85	77	72	65
1.50	93	84	78	91	83	78	88	82	77	70
2.00	99	91	86	97	90	85	94	88	84	76
2.50	102	95	90	100	94	89	96	91	87	80
3.00	105	99	94	103	97	93	99	94	91	83
4.00	108	103	99	106	101	98	102	98	95	87
5.00	110	106	102	108	104	101	103	100	98	89
ROOM INDEX	UF(total)									Direct
According to DIN EN 13032-2 2004			Suspended				SHRNOM = 1.25			

C Range: 0 - 360DEG  
 C Interval: 15.0DEG  
 Test Speed: HIGH  
 Temperature: 25.0DEG  
 Operators: Alan Wang  
 Test Date: 01 November 2021

$\gamma$  Range: 0 - 180DEG  
 $\gamma$  Interval: 1.0DEG  
 Test System: EVERFINE GO-R5000\_V2 SYSTEM V2.00.416  
 Humidity: 44.8%  
 Test Distance: 2.500m [K=1.0405]  
 Remarks:

ISOCANDELA DIAGRAM

Test:U:120.00V I:0.9080A P:108.56W PF:0.9963 Freq:60.00Hz Lamp Flux:14960x1 lm		
NAME: ASD Lighting Corp	TYPE: LED	WEIGHT:
SPEC.:	DIM.:	SERIAL No.:
MFR.: ASD Lighting Corp	SUR.:	Shielding Angle:



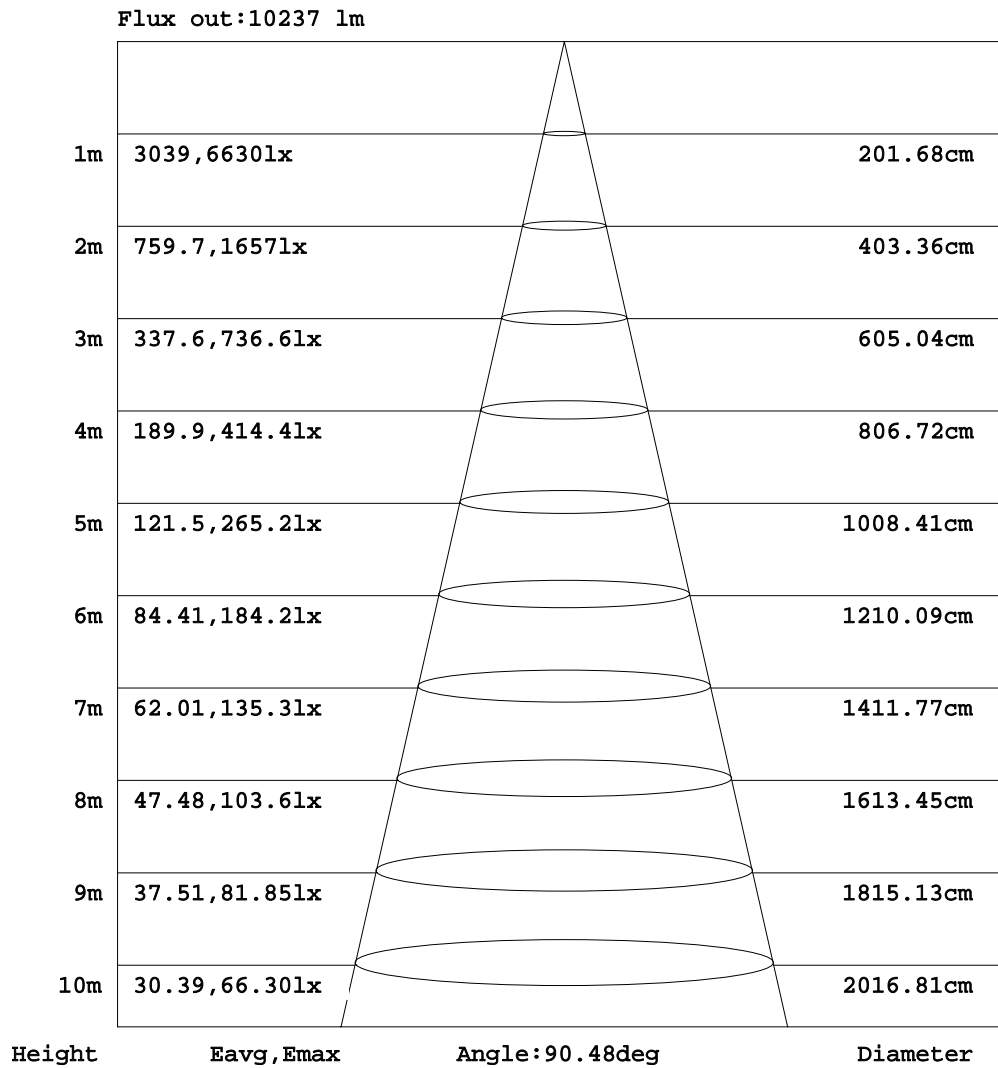
C Range: 0 - 360DEG  
 C Interval: 15.0DEG  
 Test Speed: HIGH  
 Temperature: 25.0DEG  
 Operators: Alan Wang  
 Test Date: 01 November 2021

γ Range: 0 - 180DEG  
 γ Interval: 1.0DEG  
 Test System: EVERFINE GO-R5000\_V2 SYSTEM V2.00.416  
 Humidity: 44.8%  
 Test Distance: 2.500m [K=1.0405]  
 Remarks:



AAI Figure

Test:U:120.00V I:0.9080A P:108.56W PF:0.9963 Freq:60.00Hz Lamp Flux:14960x1 lm		
NAME: ASD Lighting Corp	TYPE: LED	WEIGHT:
SPEC.:	DIM.:	SERIAL No.:
MFR.: ASD Lighting Corp	SUR.:	Shielding Angle:



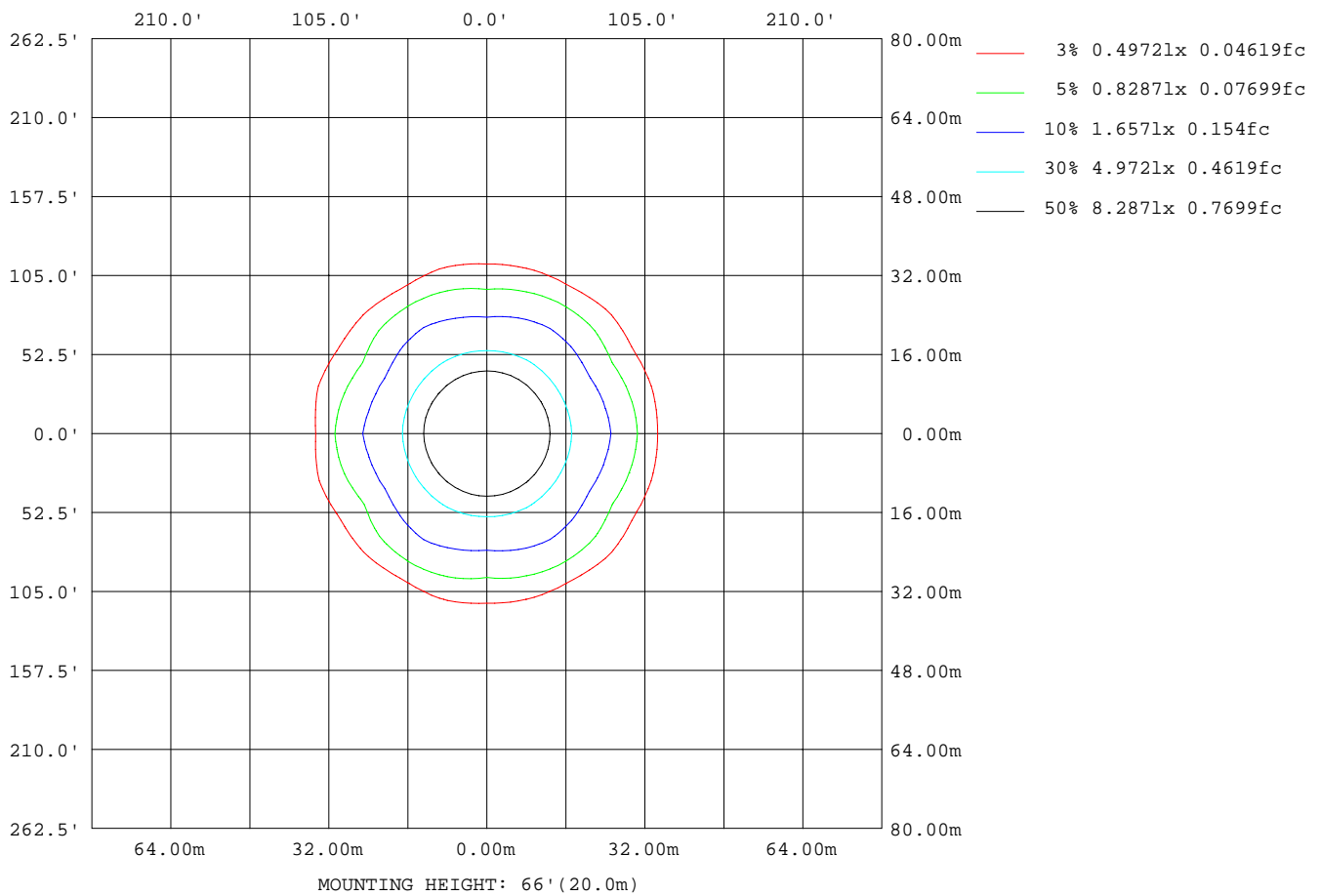
Note:The Curves indicate the illuminated area and the average illumination when the luminaire is at different distance.

C Range: 0 - 360DEG  
 C Interval: 15.0DEG  
 Test Speed: HIGH  
 Temperature: 25.0DEG  
 Operators: Alan Wang  
 Test Date: 01 November 2021

γ Range: 0 - 180DEG  
 γ Interval: 1.0DEG  
 Test System: EVERFINE GO-R5000\_V2 SYSTEM V2.00.416  
 Humidity: 44.8%  
 Test Distance: 2.500m [K=1.0405]  
 Remarks:

ISOLUX DIAGRAM

Test:U:120.00V I:0.9080A P:108.56W PF:0.9963 Freq:60.00Hz Lamp Flux:14960x1 lm		
NAME: ASD Lighting Corp	TYPE: LED	WEIGHT:
SPEC.:	DIM.:	SERIAL No.:
MFR.: ASD Lighting Corp	SUR.:	Shielding Angle:



C Range: 0 - 360DEG  
 C Interval: 15.0DEG  
 Test Speed: HIGH  
 Temperature: 25.0DEG  
 Operators: Alan Wang  
 Test Date: 01 November 2021

γ Range: 0 - 180DEG  
 γ Interval: 1.0DEG  
 Test System: EVERFINE GO-R5000\_V2 SYSTEM V2.00.416  
 Humidity: 44.8%  
 Test Distance: 2.500m [K=1.0405]  
 Remarks:

## LED Avg.L Report

Test:U:120.00V I:0.9080A P:108.56W PF:0.9963 Freq:60.00Hz Lamp Flux:14960x1 lm		
NAME: ASD Lighting Corp	TYPE: LED	WEIGHT:
SPEC.:	DIM.:	SERIAL No.:
MFR.: ASD Lighting Corp	SUR.:	Shielding Angle:

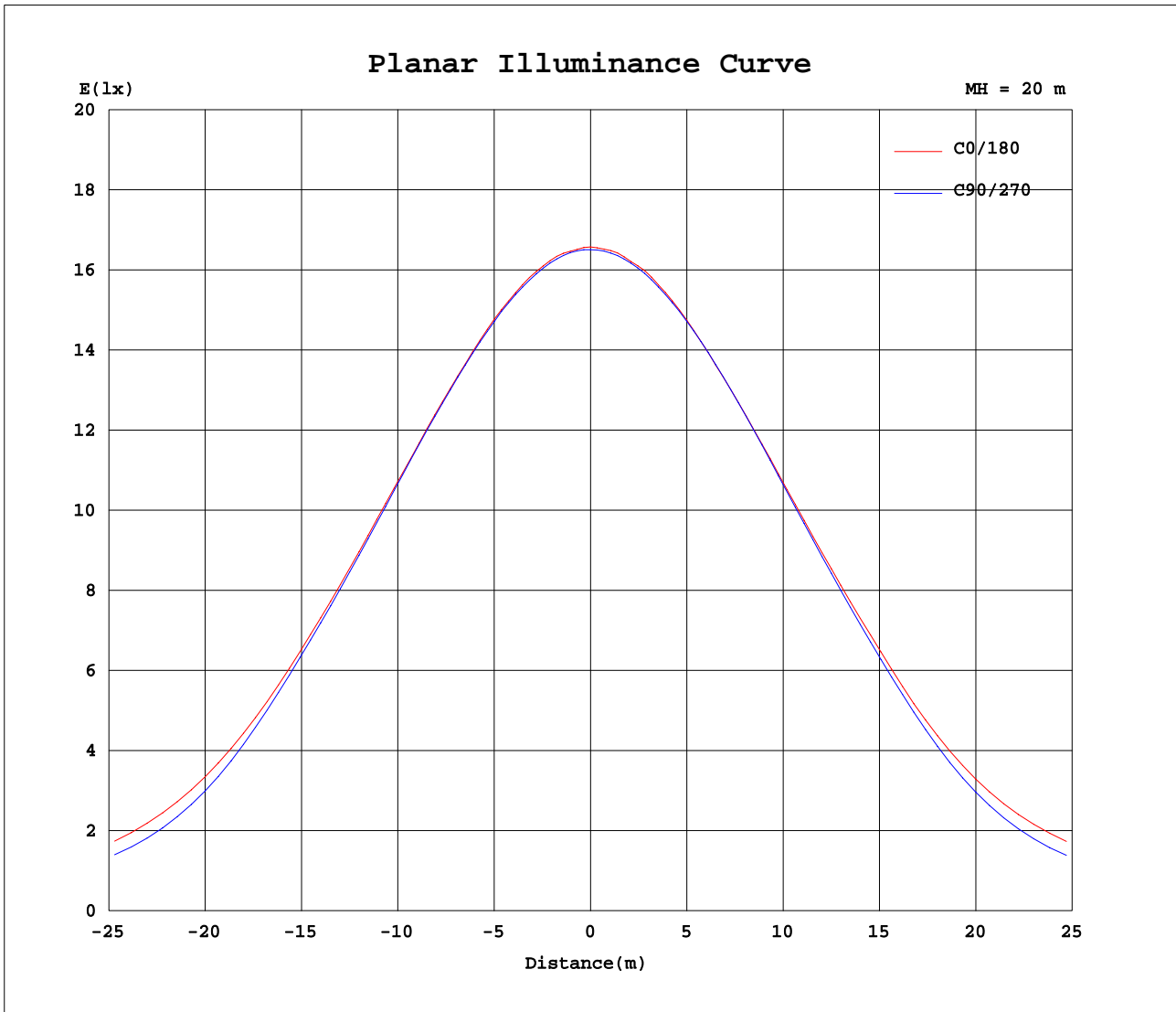
AvgL	cd/m2
L_0~180(65)av	13417
L_0~180(75)av	14930
L_0~180(85)av	16482
L_90~270(65)av	15680
L_90~270(75)av	12492
L_90~270(85)av	15016
L_45(65)av	16294
L_45(75)av	15285
L_45(85)av	15157

Standard: GB/T 29293-2012

C Range: 0 - 360DEG  
 C Interval: 15.0DEG  
 Test Speed: HIGH  
 Temperature: 25.0DEG  
 Operators: Alan Wang  
 Test Date: 01 November 2021

$\gamma$  Range: 0 - 180DEG  
 $\gamma$  Interval: 1.0DEG  
 Test System: EVERFINE GO-R5000\_V2 SYSTEM V2.00.416  
 Humidity: 44.8%  
 Test Distance: 2.500m [K=1.0405]  
 Remarks:

Planar Illuminance Curve



C Range: 0 - 360DEG  
 C Interval: 15.0DEG  
 Test Speed: HIGH  
 Temperature: 25.0DEG  
 Operators: Alan Wang  
 Test Date: 01 November 2021

$\gamma$  Range: 0 - 180DEG  
 $\gamma$  Interval: 1.0DEG  
 Test System: EVERFINE GO-R5000\_V2 SYSTEM V2.00.416  
 Humidity: 44.8%  
 Test Distance: 2.500m [K=1.0405]  
 Remarks:

LUMINOUS DISTRIBUTION INTENSITY DATA

Test:U:120.00V I:0.9080A P:108.56W PF:0.9963 Freq:60.00Hz Lamp Flux:14960x1 lm		
NAME: ASD Lighting Corp	TYPE: LED	WEIGHT:
SPEC.:	DIM.:	SERIAL No.:
MFR.: ASD Lighting Corp	SUR.:	Shielding Angle:

Table--1

UNIT: cd

C( DEG) γ (DEG)	0	15	30	45	60	75	90	105	120	135	150	165	180	195	210	225	240	255	270
0	6630	6629	6624	6617	6613	6611	6602	6602	6602	6599	6594	6590	6630	6629	6624	6617	6613	6611	6602
5	6612	6613	6606	6593	6588	6592	6585	6575	6578	6580	6575	6564	6606	6606	6604	6599	6589	6584	6584
10	6547	6547	6545	6536	6537	6531	6523	6521	6510	6519	6511	6505	6545	6541	6544	6533	6524	6525	6522
15	6443	6443	6440	6435	6436	6428	6421	6416	6417	6411	6398	6396	6433	6432	6431	6423	6428	6427	6426
20	6285	6284	6284	6282	6289	6283	6270	6273	6266	6248	6237	6239	6275	6271	6263	6260	6273	6270	6273
25	6070	6069	6067	6053	6059	6054	6055	6043	6031	6022	6024	6029	6066	6064	6048	6032	6034	6040	6045
30	5772	5762	5745	5737	5732	5732	5721	5716	5695	5697	5707	5716	5756	5751	5729	5708	5702	5708	5705
35	5322	5300	5263	5254	5266	5248	5234	5226	5225	5212	5228	5254	5313	5286	5246	5220	5218	5204	5201
40	4649	4585	4515	4524	4579	4504	4462	4495	4525	4476	4468	4521	4602	4549	4475	4471	4501	4454	4412
45	3786	3636	3481	3566	3667	3497	3386	3502	3638	3502	3395	3534	3718	3546	3401	3510	3617	3467	3349
50	2943	2712	2473	2730	2892	2658	2404	2621	2898	2640	2323	2587	2917	2577	2350	2686	2886	2590	2375
55	2252	2058	1864	2176	2238	2056	1860	2074	2255	2122	1751	2043	2317	2032	1816	2156	2230	2052	1867
60	1572	1588	1520	1642	1524	1574	1545	1614	1479	1589	1550	1695	1584	1720	1588	1597	1463	1605	1538
65	1042	1217	1145	1186	973	1183	1131	1173	905	1159	1216	1270	885	1312	1227	1150	894	1159	1122
70	800	937	821	875	750	886	769	874	681	916	761	898	587	921	763	897	689	863	759
75	685	677	590	646	650	627	553	649	651	703	479	695	628	699	492	702	651	647	546
80	513	447	447	437	462	413	420	443	484	421	438	453	519	473	441	408	471	434	418
85	267	240	228	240	258	233	225	223	246	211	219	190	221	207	215	209	237	214	220
90	11.4	11.1	11.0	14.4	63.8	58.2	53.6	53.8	58.3	13.9	10.0	9.36	32.0	28.1	25.7	28.9	30.7	28.3	28.6
95	0.84	0.83	0.82	0.77	0.74	0.72	0.64	0.62	0.61	0.61	0.64	0.63	1.02	1.01	1.04	1.02	1.05	1.07	1.08
100	1.07	1.29	1.00	0.92	0.91	0.99	0.87	0.90	0.94	1.01	1.03	1.37	1.52	1.74	1.49	1.40	1.35	1.30	1.30
105	1.81	1.68	1.88	1.68	1.50	1.54	1.46	1.50	1.47	1.67	1.75	1.49	1.98	2.03	2.16	2.09	1.97	2.00	1.96
110	2.23	1.92	3.49	2.26	2.43	2.70	2.07	2.22	2.28	2.18	3.23	1.75	2.36	2.24	3.73	2.50	2.79	2.79	2.66
115	2.50	2.20	2.71	4.91	2.94	4.05	2.76	2.87	2.72	4.17	2.52	2.05	2.72	2.51	3.03	4.86	3.30	3.51	3.40
120	2.66	2.58	3.19	4.12	6.11	5.78	3.53	4.09	5.28	3.67	2.96	2.44	3.08	3.04	3.68	4.76	6.37	5.02	4.45
125	3.24	3.30	3.65	3.97	5.04	8.72	6.58	6.36	4.37	3.73	3.40	2.86	3.86	4.03	4.42	4.69	5.81	7.92	7.75
130	3.72	3.59	4.16	4.46	5.18	7.65	4.63	5.13	4.41	4.14	3.69	3.10	4.42	4.63	5.29	5.57	5.78	6.73	6.20
135	3.99	4.02	4.16	5.00	6.09	8.98	5.15	5.97	4.89	4.62	3.98	3.68	5.17	5.18	5.32	6.25	6.57	7.69	6.90
140	4.79	4.63	5.09	5.61	6.97	10.1	5.52	6.60	5.39	4.75	4.87	4.31	5.75	5.75	6.26	6.89	7.22	8.48	7.37
145	5.35	5.17	5.58	5.72	8.18	10.8	6.00	7.24	5.85	5.10	4.83	4.74	6.50	6.28	6.70	6.82	7.82	9.14	7.91
150	6.04	5.73	6.03	6.93	8.54	9.24	5.94	6.65	6.15	6.11	5.24	5.04	6.79	6.68	7.03	7.64	7.89	8.69	7.63
155	6.80	7.06	6.69	7.77	9.95	8.36	6.82	6.85	7.69	6.24	5.94	5.87	7.69	7.31	7.67	8.01	8.75	9.68	8.66
160	6.62	6.65	8.61	9.19	10.4	6.55	6.47	6.91	7.52	6.96	6.36	6.38	8.21	7.90	7.83	8.59	9.43	9.46	8.42
165	9.61	10.1	10.5	10.4	10.3	7.07	7.40	7.56	8.46	8.19	8.01	7.71	8.85	8.75	9.08	9.30	10.2	9.38	9.29
170	11.6	11.5	11.7	9.55	6.71	7.51	7.48	7.67	7.64	7.83	8.56	8.45	9.73	9.71	9.38	9.47	8.42	8.95	8.95
175	7.21	7.37	7.42	7.43	8.00	7.89	7.32	7.18	7.30	7.38	7.43	7.62	8.28	8.28	8.31	8.16	8.09	8.20	8.11
180	7.43	7.86	7.77	7.73	7.56	7.36	6.90	6.68	8.03	8.36	7.53	8.06	7.85	7.82	7.90	7.90	7.80	7.59	7.36

C Range: 0 - 360DEG  
 C Interval: 15.0DEG  
 Test Speed: HIGH  
 Temperature: 25.0DEG  
 Operators: Alan Wang  
 Test Date: 01 November 2021

γ Range: 0 - 180DEG  
 γ Interval: 1.0DEG  
 Test System: EVERFINE GO-R5000\_V2 SYSTEM V2.00.416  
 Humidity: 44.8%  
 Test Distance: 2.500m [K=1.0405]  
 Remarks:

LUMINOUS DISTRIBUTION INTENSITY DATA

Test:U:120.00V I:0.9080A P:108.56W PF:0.9963 Freq:60.00Hz Lamp Flux:14960x1 lm		
NAME: ASD Lighting Corp	TYPE: LED	WEIGHT:
SPEC.:	DIM.:	SERIAL No.:
MFR.: ASD Lighting Corp	SUR.:	Shielding Angle:

Table--2

UNIT: cd

C(DEG) γ (DEG)	285	300	315	330	345														
0	6602	6602	6599	6594	6590														
5	6581	6570	6572	6575	6572														
10	6516	6521	6518	6517	6518														
15	6416	6414	6417	6413	6412														
20	6268	6267	6263	6256	6252														
25	6047	6038	6033	6042	6038														
30	5711	5707	5710	5720	5737														
35	5214	5239	5223	5237	5275														
40	4453	4523	4483	4473	4561														
45	3453	3616	3525	3444	3622														
50	2623	2836	2695	2450	2704														
55	2012	2184	2140	1867	2054														
60	1554	1505	1634	1510	1597														
65	1177	973	1185	1146	1220														
70	877	755	866	825	940														
75	617	649	638	594	684														
80	416	468	441	451	450														
85	228	255	239	238	241														
90	31.6	35.3	33.6	30.4	34.4														
95	1.11	1.11	1.12	1.19	1.21														
100	1.34	1.34	1.43	1.45	1.78														
105	2.13	2.07	2.33	2.47	2.33														
110	3.35	2.92	2.83	3.89	2.65														
115	4.46	3.58	5.23	3.25	2.91														
120	6.47	6.72	4.64	3.88	3.41														
125	9.69	5.95	4.97	4.57	4.07														
130	8.80	6.41	5.73	5.01	4.72														
135	10.3	7.40	6.48	5.72	5.39														
140	11.3	8.53	6.73	6.63	6.14														
145	12.3	9.57	7.57	7.05	6.63														
150	10.2	10.0	8.84	7.90	7.31														
155	8.48	12.0	9.70	8.40	8.59														
160	8.33	12.2	12.0	10.9	8.60														
165	8.86	8.56	12.6	12.2	12.0														
170	8.84	8.55	8.38	12.0	12.7														
175	8.42	8.90	8.44	8.07	7.99														
180	6.95	7.09	7.39	7.59	7.61														

C Range: 0 - 360DEG  
 C Interval: 15.0DEG  
 Test Speed: HIGH  
 Temperature: 25.0DEG  
 Operators: Alan Wang  
 Test Date: 01 November 2021

γ Range: 0 - 180DEG  
 γ Interval: 1.0DEG  
 Test System: EVERFINE GO-R5000\_V2 SYSTEM V2.00.416  
 Humidity: 44.8%  
 Test Distance: 2.500m [K=1.0405]  
 Remarks: