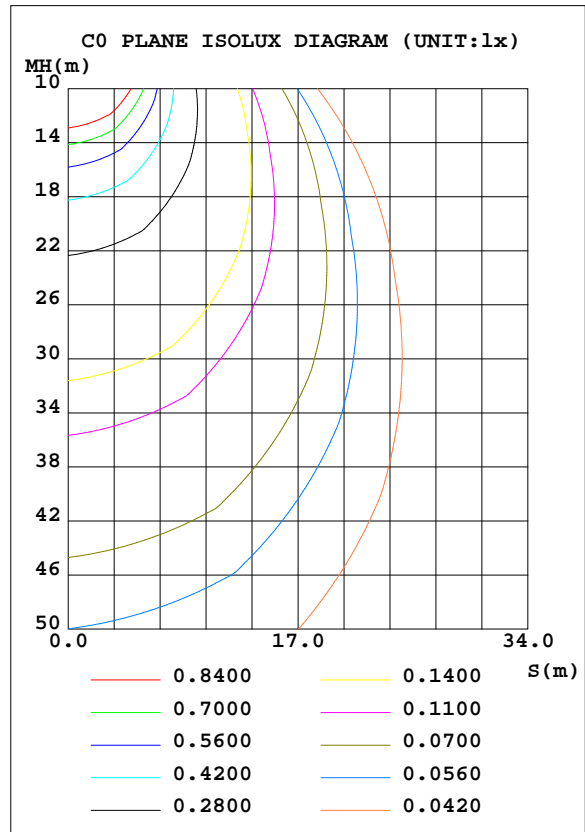
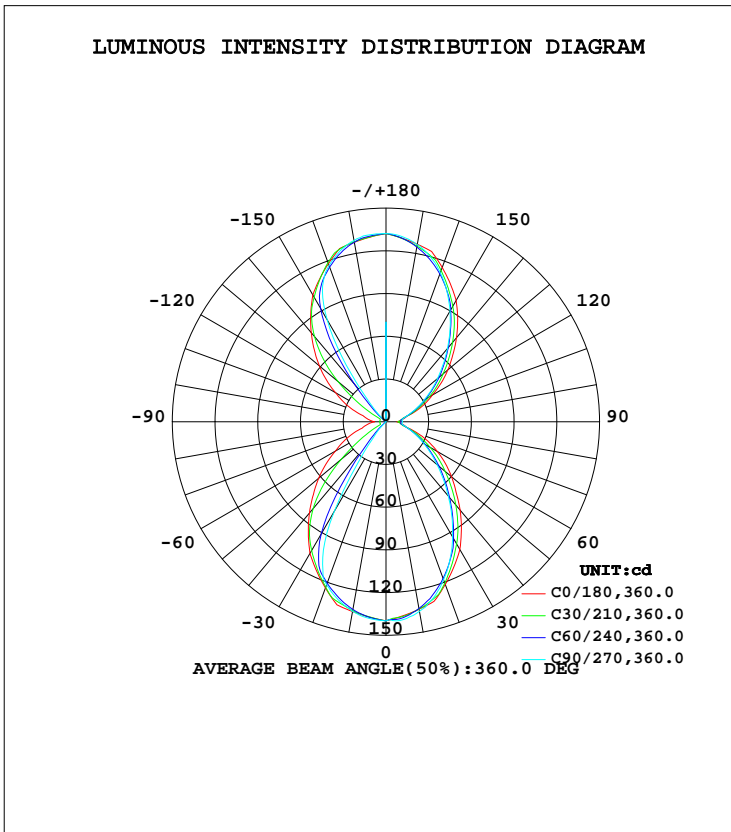


LUMINAIRE PHOTOMETRIC TEST REPORT

Test:U:120.00V I:0.1838A P:21.730W PF:0.9852 Freq:60.00Hz Lamp Flux:496.689x1 lm		
NAME: LED Wall Pack	TYPE:LED	WEIGHT:
SPEC.:ASD-LWS28S-MV-18D22CC-BK_5000K	DIM.:	SERIAL No.:
MFR.: ASD Lighting Corp	SUR.:	Shielding Angle:

DATA OF LAMP		PHOTOMETRIC DATA Eff: 22.86 lm/W			
MODEL	ASD-LWS28S-MV-18D22CC-BK	I <sub>max</sub> (cd)	140.1	S/MH(C0/180)	1.15
NOMINAL POWER(W)	22	LOR(%)	100.0	S/MH(C90/270)	0.88
RATED VOLTAGE(V)	120	TOTAL FLUX(lm)	496.69	η UP, DN(C0-180)	28.9,29.9
NOMINAL FLUX(lm)	496.689	CIE CLASS	DIFFUSE	η UP, DN(C180-360)	20.8,20.4
LAMPS INSIDE	1	η up(%)	49.7	CIBSE SHR NOM	1.00
TEST VOLTAGE(V)	120	η down(%)	50.3	CIBSE SHR MAX	1.10



C Range: 0 - 360DEG  
 C Interval: 15.0DEG  
 Test Speed: HIGH  
 Temperature: 25.0DEG  
 Operators: Alan Wang  
 Test Date: 09 August 2023

γ Range: 0 - 180DEG  
 γ Interval: 1.0DEG  
 Test System: EVERFINE GO-R5000\_V2 SYSTEM V2.00.416  
 Humidity: 42.7%  
 Test Distance: 2.500m [K=1.0391]  
 Remarks:

ZONAL FLUX DIAGRAM

ZONAL FLUX DIAGRAM:

γ	C0	C45	C90	C135	C180	C225	C270	C315	γ	Φ zone	Φ total	%lum,lamp
10	133.7	133.1	135.2	134.3	135.4	134.1	135.2	132.9	0- 10	13.03	13.03	2.62,2.62
20	121.7	119.7	118.2	122.8	124.3	122.9	121.9	120.6	10- 20	36.22	49.25	9.92,9.92
30	103.7	96.41	93.63	99.55	106.7	100.5	72.76	97.75	20- 30	50.38	99.63	20.1,20.1
40	80.93	73.20	68.23	76.18	83.66	54.19	11.79	52.94	30- 40	48.91	148.5	29.9,29.9
50	60.19	51.40	46.89	53.88	61.68	10.36	0.0486	9.340	40- 50	37.91	186.5	37.5,37.5
60	41.51	33.87	30.73	36.00	40.80	1.355	0.0333	1.129	50- 60	27.18	213.6	43,43
70	23.71	20.16	19.14	21.91	25.21	1.380	0.0251	1.098	60- 70	18.10	231.7	46.7,46.7
80	12.41	10.89	11.99	11.98	14.30	1.381	0.0219	1.081	70- 80	10.76	242.5	48.8,48.8
90	7.613	9.724	11.60	9.740	8.066	1.375	0.0322	1.074	80- 90	7.552	250.0	50.3,50.3
100	12.73	11.15	12.07	11.26	13.80	1.320	0.0202	1.099	90-100	7.534	257.6	51.9,51.9
110	22.72	20.45	19.12	21.35	24.75	1.304	0.0209	1.092	100-110	10.65	268.2	54,54
120	37.59	33.82	31.33	35.65	40.91	1.305	0.0275	1.941	110-120	17.97	286.2	57.6,57.6
130	56.76	50.52	47.28	52.96	61.09	14.31	0.0564	18.65	120-130	27.46	313.7	63.2,63.2
140	77.06	70.82	67.16	73.53	81.72	59.64	19.86	63.66	130-140	38.84	352.5	71,71
150	98.50	91.71	89.95	94.26	102.8	97.30	82.62	95.14	140-150	49.18	401.7	80.9,80.9
160	115.4	112.8	111.5	114.8	118.2	118.3	116.8	115.8	150-160	48.35	450.0	90.6,90.6
170	126.6	124.8	126.4	126.0	128.0	128.4	129.4	127.2	160-170	34.33	484.4	97.5,97.5
180	132.2	132.2	132.2	132.2	132.2	132.2	132.2	132.2	170-180	12.32	496.7	100,100
DEG	LUMINOUS INTENSITY:cd									UNIT:lm		

Conical surface Flux(90deg): 168.98 lm

%lum = 34.0%  
 %lamp = 34.0%

Conical surface Flux(120deg): 213.63 lm

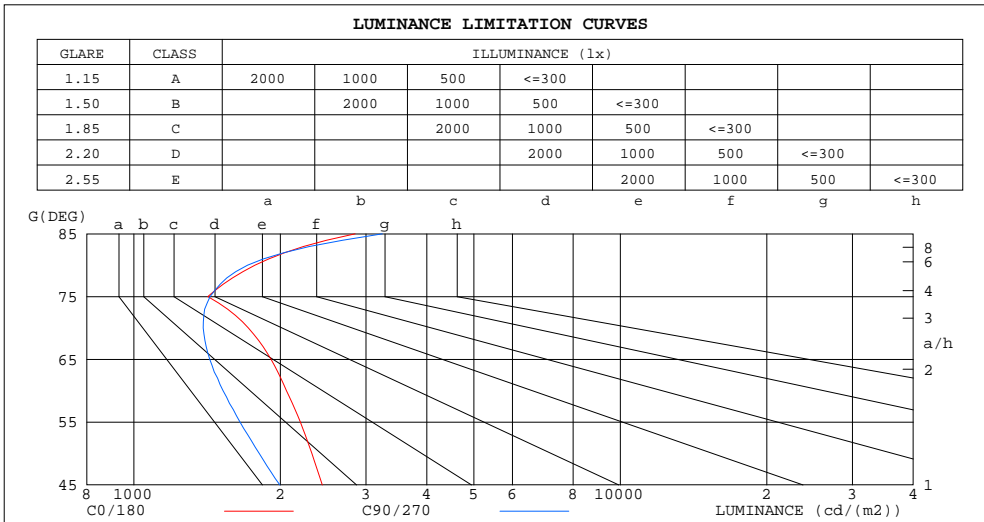
%lum = 43.0%  
 %lamp = 43.0%

C Range: 0 - 360DEG  
 C Interval: 15.0DEG  
 Test Speed: HIGH  
 Temperature: 25.0DEG  
 Operators: Alan Wang  
 Test Date: 09 August 2023

γ Range: 0 - 180DEG  
 γ Interval: 1.0DEG  
 Test System: EVERFINE GO-R5000\_V2 SYSTEM V2.00.416  
 Humidity: 42.7%  
 Test Distance: 2.500m [K=1.0391]  
 Remarks:

LUMINANCE LIMITATION CURVES

Test:U:120.00V I:0.1838A P:21.730W PF:0.9852 Freq:60.00Hz Lamp Flux:496.689x1 lm		
NAME: LED Wall Pack	TYPE:LED	WEIGHT:
SPEC.:ASD-LWS28S-MV-18D22CC-BK_5000K	DIM.:	SERIAL No.:
MFR.: ASD Lighting Corp	SUR.:	Shielding Angle:



LUMINANCE cd/(m2)		
G (DEG)	C0/180	C90/270
85	2850	3241
80	1773	1713
75	1420	1434
70	1720	1388
65	1914	1432
60	2059	1525
55	2199	1653
50	2322	1809
45	2439	1995

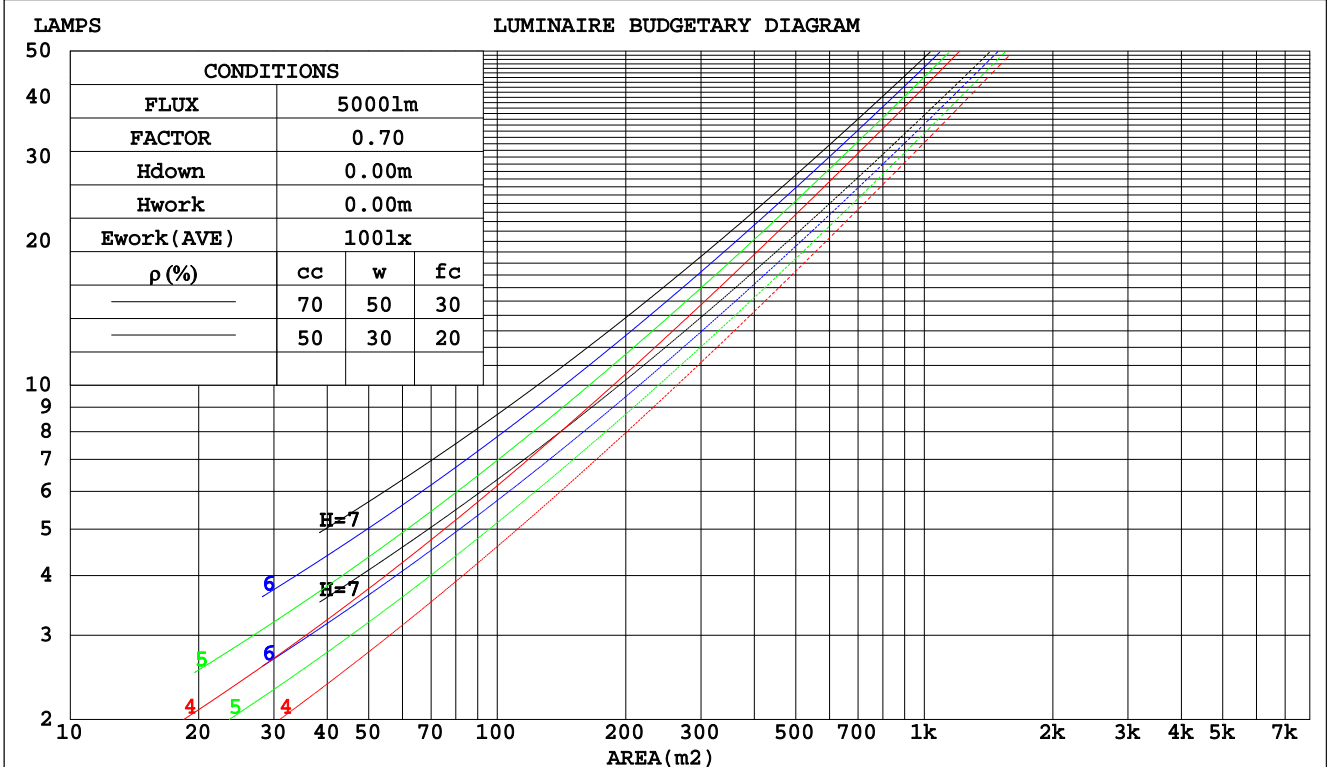
C Range: 0 - 360DEG  
 C Interval: 15.0DEG  
 Test Speed: HIGH  
 Temperature: 25.0DEG  
 Operators: Alan Wang  
 Test Date: 09 August 2023

$\gamma$  Range: 0 - 180DEG  
 $\gamma$  Interval: 1.0DEG  
 Test System: EVERFINE GO-R5000\_V2 SYSTEM V2.00.416  
 Humidity: 42.7%  
 Test Distance: 2.500m [K=1.0391]  
 Remarks:

CU AND LUMINAIRE BUDGETARY ESTIMATE DIAGRAM

Test:U:120.00V I:0.1838A P:21.730W PF:0.9852 Freq:60.00Hz Lamp Flux:496.689x1 lm		
NAME: LED Wall Pack	TYPE:LED	WEIGHT:
SPEC.:ASD-LWS28S-MV-18D22CC-BK_5000K	DIM.:	SERIAL No.:
MFR.: ASD Lighting Corp	SUR.:	Shielding Angle:

pcc	80%			70%			50%			30%			10%			0
	50%	30%	10%	50%	30%	10%	50%	30%	10%	50%	30%	10%	50%	30%	10%	0
pw																
pfc	20%			20%			20%			20%			20%			0
RCR	RCR:Room Cavity Ratio						Coefficients of Utilization(CU)									
0.0	1.07	1.07	1.07	.99	.99	.99	.84	.84	.84	.69	.69	.69	.56	.56	.56	.50
1.0	.94	.90	.87	.87	.84	.81	.74	.71	.69	.62	.60	.59	.50	.49	.48	.43
2.0	.83	.77	.72	.77	.72	.68	.66	.62	.59	.55	.52	.50	.45	.44	.42	.37
3.0	.74	.67	.61	.69	.62	.58	.59	.54	.50	.49	.46	.43	.41	.39	.37	.33
4.0	.66	.58	.53	.61	.55	.50	.53	.48	.44	.45	.41	.38	.37	.35	.32	.29
5.0	.59	.52	.46	.55	.48	.43	.48	.42	.38	.41	.37	.34	.34	.31	.29	.26
6.0	.54	.46	.40	.50	.43	.38	.43	.38	.34	.37	.33	.30	.31	.28	.26	.23
7.0	.49	.41	.36	.46	.39	.34	.40	.34	.30	.34	.30	.27	.29	.26	.23	.21
8.0	.44	.37	.32	.42	.35	.30	.36	.31	.27	.31	.27	.24	.27	.24	.21	.19
9.0	.41	.34	.29	.38	.32	.27	.34	.28	.25	.29	.25	.22	.25	.22	.20	.17
10.0	.38	.31	.26	.35	.29	.25	.31	.26	.23	.27	.23	.20	.23	.20	.18	.16



C Range: 0 - 360DEG  
 C Interval: 15.0DEG  
 Test Speed: HIGH  
 Temperature: 25.0DEG  
 Operators: Alan Wang  
 Test Date: 09 August 2023

γ Range: 0 - 180DEG  
 γ Interval: 1.0DEG  
 Test System: EVERFINE GO-R5000\_V2 SYSTEM V2.00.416  
 Humidity: 42.7%  
 Test Distance: 2.500m [K=1.0391]  
 Remarks:

WEC AND CCEC

Test:U:120.00V I:0.1838A P:21.730W PF:0.9852 Freq:60.00Hz Lamp Flux:496.689x1 lm		
NAME: LED Wall Pack	TYPE:LED	WEIGHT:
SPEC.:ASD-LWS28S-MV-18D22CC-BK_5000K	DIM.:	SERIAL No.:
MFR.: ASD Lighting Corp	SUR.:	Shielding Angle:

ρcc	80%			70%			50%			30%			10%			0
ρw	50%	30%	10%	50%	30%	10%	50%	30%	10%	50%	30%	10%	50%	30%	10%	0
ρfc	20%			20%			20%			20%			20%			0
RCR	RCR:Room Cavity Ratio						Wall Exitance Coefficients(WEC)									
0.0																
1.0	.269	.153	.049	.247	.141	.045	.206	.118	.038	.168	.097	.031	.134	.077	.025	
2.0	.248	.136	.042	.228	.125	.039	.190	.106	.033	.156	.087	.027	.124	.070	.022	
3.0	.229	.122	.036	.210	.113	.034	.176	.096	.029	.145	.079	.024	.115	.064	.020	
4.0	.212	.110	.032	.195	.102	.030	.164	.087	.026	.135	.072	.022	.108	.059	.018	
5.0	.197	.100	.029	.182	.093	.027	.153	.080	.023	.126	.066	.020	.101	.054	.016	
6.0	.184	.092	.026	.170	.086	.025	.143	.073	.021	.118	.061	.018	.095	.050	.015	
7.0	.172	.085	.024	.159	.079	.023	.134	.068	.020	.111	.057	.017	.089	.046	.014	
8.0	.161	.079	.022	.149	.074	.021	.126	.063	.018	.105	.053	.015	.084	.043	.013	
9.0	.152	.073	.021	.141	.069	.019	.119	.059	.017	.099	.050	.014	.080	.041	.012	
10.0	.143	.069	.019	.133	.064	.018	.113	.055	.016	.094	.047	.013	.076	.038	.011	

ρcc	80%			70%			50%			30%			10%			0
ρw	50%	30%	10%	50%	30%	10%	50%	30%	10%	50%	30%	10%	50%	30%	10%	0
ρfc	20%			20%			20%			20%			20%			0
RCR	RCR:Room Cavity Ratio						Ceiling Cavity Exitance Coefficients(CCEC)									
0.0	.569	.569	.569	.486	.486	.486	.332	.332	.332	.191	.191	.191	.061	.061	.061	
1.0	.559	.538	.519	.478	.462	.447	.327	.318	.309	.188	.184	.180	.060	.059	.058	
2.0	.550	.516	.487	.471	.444	.421	.323	.307	.294	.186	.179	.172	.060	.058	.056	
3.0	.543	.500	.466	.465	.431	.404	.319	.300	.284	.184	.175	.167	.059	.057	.055	
4.0	.535	.488	.452	.459	.422	.392	.316	.294	.276	.183	.172	.163	.059	.056	.054	
5.0	.529	.478	.441	.454	.414	.384	.313	.289	.271	.181	.170	.161	.058	.055	.053	
6.0	.522	.471	.434	.449	.408	.378	.310	.285	.267	.180	.168	.159	.058	.055	.052	
7.0	.517	.465	.428	.444	.403	.373	.307	.282	.264	.178	.166	.157	.058	.054	.052	
8.0	.511	.459	.424	.440	.398	.370	.304	.280	.262	.177	.165	.156	.057	.054	.052	
9.0	.506	.455	.421	.436	.395	.367	.302	.278	.260	.176	.164	.155	.057	.054	.051	
10.0	.501	.451	.418	.432	.392	.365	.300	.276	.259	.175	.163	.155	.057	.054	.051	

C Range: 0 - 360DEG  
 C Interval: 15.0DEG  
 Test Speed: HIGH  
 Temperature: 25.0DEG  
 Operators: Alan Wang  
 Test Date: 09 August 2023

γ Range: 0 - 180DEG  
 γ Interval: 1.0DEG  
 Test System: EVERFINE GO-R5000\_V2 SYSTEM V2.00.416  
 Humidity: 42.7%  
 Test Distance: 2.500m [K=1.0391]  
 Remarks:

UGR(Unified Glare Rating) Table

Test:U:120.00V I:0.1838A P:21.730W PF:0.9852 Freq:60.00Hz Lamp Flux:496.689x1 lm		
NAME: LED Wall Pack	TYPE:LED	WEIGHT:
SPEC.:ASD-LWS28S-MV-18D22CC-BK_5000K	DIM.:	SERIAL No.:
MFR.: ASD Lighting Corp	SUR.:	Shielding Angle:

ceiling/cavity	0.7	0.7	0.5	0.5	0.3	0.7	0.7	0.5	0.5	0.3
walls	0.5	0.3	0.5	0.3	0.3	0.5	0.3	0.5	0.3	0.3
working plane	0.2	0.2	0.2	0.2	0.2	0.2	0.2	0.2	0.2	0.2
Room dimensions	Viewed crosswise					Viewed endwise				
x = 2H y = 2H	12.3	13.2	13.1	14.0	15.1	11.1	12.0	12.0	12.9	13.9
3H	13.5	14.3	14.3	15.1	16.2	12.3	13.1	13.1	13.9	15.0
4H	13.9	14.6	14.7	15.5	16.6	12.8	13.6	13.7	14.5	15.6
6H	14.3	15.0	15.2	15.9	17.0	13.4	14.1	14.4	15.0	16.2
8H	14.6	15.2	15.5	16.1	17.3	13.8	14.5	14.8	15.4	16.6
12H	14.9	15.6	15.9	16.5	17.7	14.4	15.1	15.4	16.0	17.2
4H 2H	12.5	13.2	13.4	14.1	15.2	11.5	12.3	12.4	13.2	14.3
3H	13.8	14.4	14.7	15.4	16.5	12.8	13.5	13.8	14.4	15.6
4H	14.3	14.9	15.3	15.8	17.0	13.5	14.1	14.5	15.0	16.2
6H	14.9	15.4	15.9	16.3	17.6	14.3	14.8	15.3	15.8	17.0
8H	15.3	15.7	16.3	16.7	18.0	14.8	15.3	15.8	16.2	17.5
12H	15.8	16.2	16.8	17.2	18.4	15.6	16.0	16.5	16.9	18.2
8H 4H	14.4	14.8	15.4	15.8	17.1	13.7	14.2	14.7	15.1	16.4
6H	15.2	15.5	16.2	16.5	17.8	14.7	15.1	15.7	16.1	17.4
8H	15.7	16.0	16.7	17.0	18.4	15.4	15.7	16.4	16.7	18.1
12H	16.4	16.7	17.4	17.7	19.0	16.4	16.7	17.4	17.7	19.0
12H 4H	14.4	14.8	15.4	15.8	17.0	13.7	14.1	14.7	15.1	16.4
6H	15.2	15.6	16.3	16.6	17.9	14.8	15.1	15.8	16.2	17.5
8H	15.9	16.2	16.9	17.2	18.5	15.6	15.9	16.6	16.9	18.2
Variations with the observer position at spacings:										
S = 1.0H	+ 0.2 / - 0.2					+ 0.2 / - 0.2				
1.5H	+ 0.2 / - 0.3					+ 0.1 / - 0.2				
2.0H	+ 0.4 / - 0.4					+ 0.1 / - 0.2				

CIE Pub.117, 496.7 lm Total Lamp Luminous Flux Corrected (8log(F/F0) = -2.4)  
 Area: 0.04032 m2

C Range: 0 - 360DEG  
 C Interval: 15.0DEG  
 Test Speed: HIGH  
 Temperature: 25.0DEG  
 Operators: Alan Wang  
 Test Date: 09 August 2023

γ Range: 0 - 180DEG  
 γ Interval: 1.0DEG  
 Test System: EVERFINE GO-R5000\_V2 SYSTEM V2.00.416  
 Humidity: 42.7%  
 Test Distance: 2.500m [K=1.0391]  
 Remarks:

## UTILIZATION FACTORS TABLE

Test:U:120.00V I:0.1838A P:21.730W PF:0.9852 Freq:60.00Hz Lamp Flux:496.689x1 lm		
NAME: LED Wall Pack	TYPE:LED	WEIGHT:
SPEC.:ASD-LWS28S-MV-18D22CC-BK_5000K	DIM.:	SERIAL No.:
MFR.: ASD Lighting Corp	SUR.:	Shielding Angle:

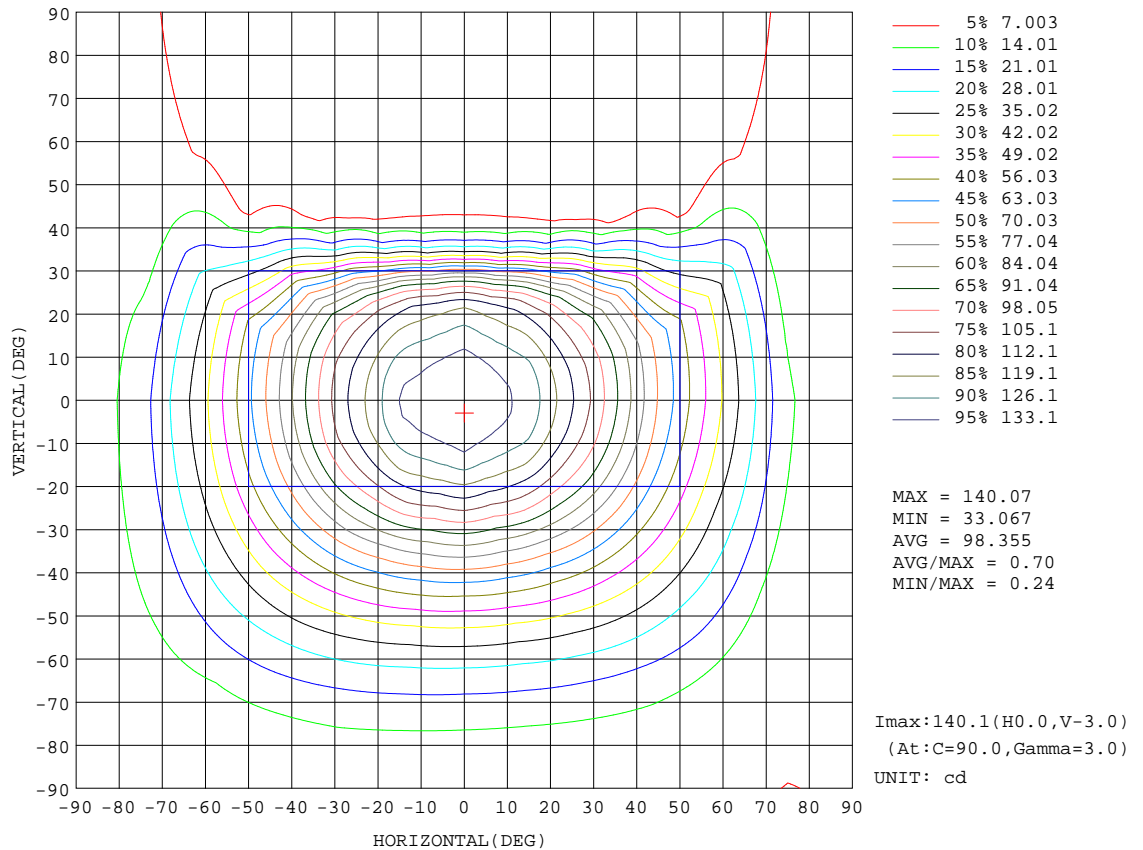
REFLECTANCE										
Ceiling	0.8	0.8	0.8	0.7	0.7	0.7	0.5	0.5	0.5	0
Walls	0.7	0.5	0.3	0.7	0.5	0.3	0.7	0.5	0.3	0
Working plane	0.2	0.2	0.2	0.2	0.2	0.2	0.2	0.2	0.2	0
ROOM INDEX	UTILIZATION FACTORS(PERCENT) $k(RI) \times RCR = 5$									
k = 0.60	49	38	33	46	37	32	42	34	30	22
0.80	58	47	41	54	45	39	48	41	36	27
1.00	65	54	48	61	52	46	54	48	42	30
1.25	71	61	54	67	58	52	59	52	47	34
1.50	76	66	60	71	63	57	62	56	51	36
2.00	83	74	67	77	69	64	66	61	57	39
2.50	87	79	73	80	74	68	69	64	60	40
3.00	90	83	77	83	77	72	71	67	63	42
4.00	94	88	83	87	82	78	74	71	68	44
5.00	96	91	87	89	85	81	76	73	70	45
ROOM INDEX	UF(total)									Direct
According to DIN EN 13032-2 2004			Suspended				SHRNOM = 1.25			

C Range: 0 - 360DEG  
 C Interval: 15.0DEG  
 Test Speed: HIGH  
 Temperature: 25.0DEG  
 Operators: Alan Wang  
 Test Date: 09 August 2023

$\gamma$  Range: 0 - 180DEG  
 $\gamma$  Interval: 1.0DEG  
 Test System: EVERFINE GO-R5000\_V2 SYSTEM V2.00.416  
 Humidity: 42.7%  
 Test Distance: 2.500m [K=1.0391]  
 Remarks:

ISOCANDELA DIAGRAM

Test:U:120.00V I:0.1838A P:21.730W PF:0.9852 Freq:60.00Hz Lamp Flux:496.689x1 lm		
NAME: LED Wall Pack	TYPE:LED	WEIGHT:
SPEC.:ASD-LWS28S-MV-18D22CC-BK_5000K	DIM.:	SERIAL No.:
MFR.: ASD Lighting Corp	SUR.:	Shielding Angle:



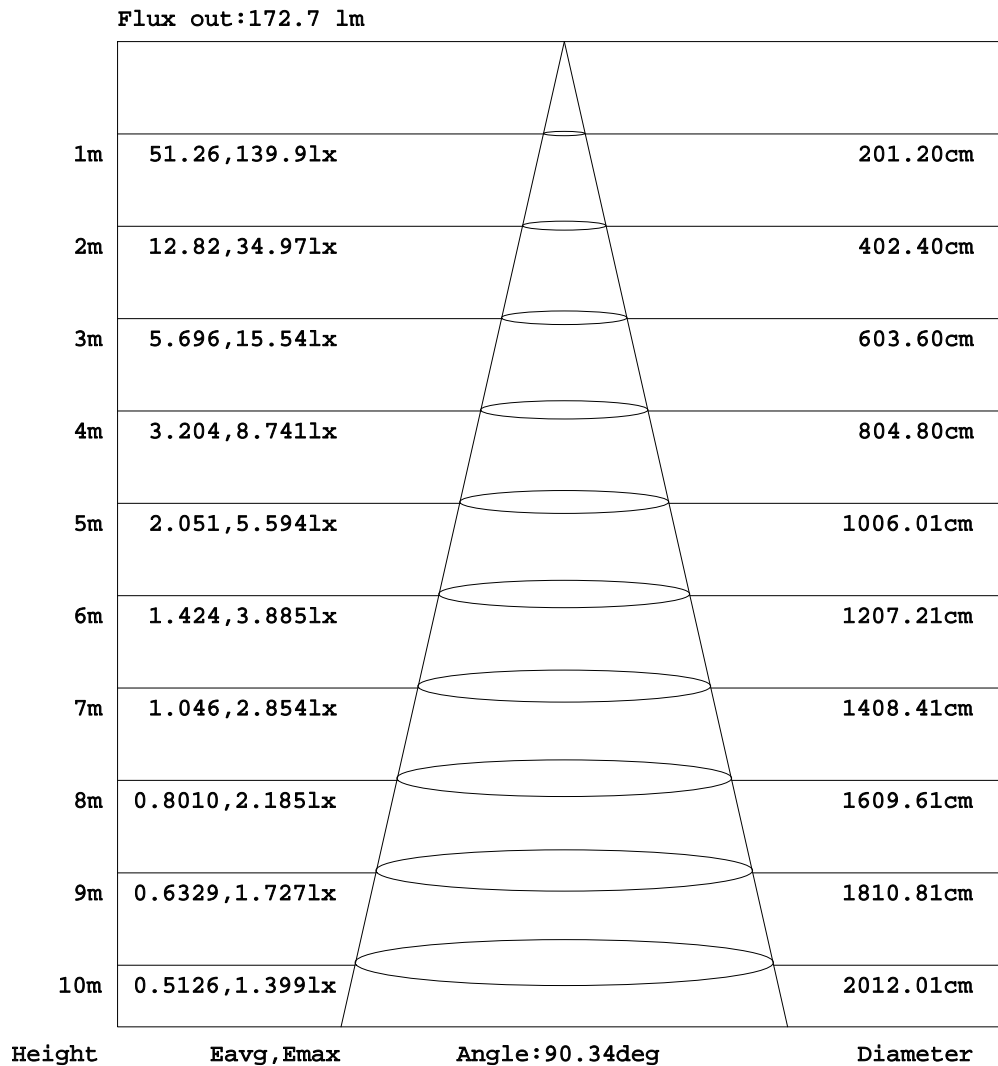
C Range: 0 - 360DEG  
 C Interval: 15.0DEG  
 Test Speed: HIGH  
 Temperature: 25.0DEG  
 Operators: Alan Wang  
 Test Date: 09 August 2023

γ Range: 0 - 180DEG  
 γ Interval: 1.0DEG  
 Test System: EVERFINE GO-R5000\_V2 SYSTEM V2.00.416  
 Humidity: 42.7%  
 Test Distance: 2.500m [K=1.0391]  
 Remarks:



AAI Figure

Test:U:120.00V I:0.1838A P:21.730W PF:0.9852 Freq:60.00Hz Lamp Flux:496.689x1 lm		
NAME: LED Wall Pack	TYPE:LED	WEIGHT:
SPEC.:ASD-LWS28S-MV-18D22CC-BK_5000K	DIM.:	SERIAL No.:
MFR.: ASD Lighting Corp	SUR.:	Shielding Angle:



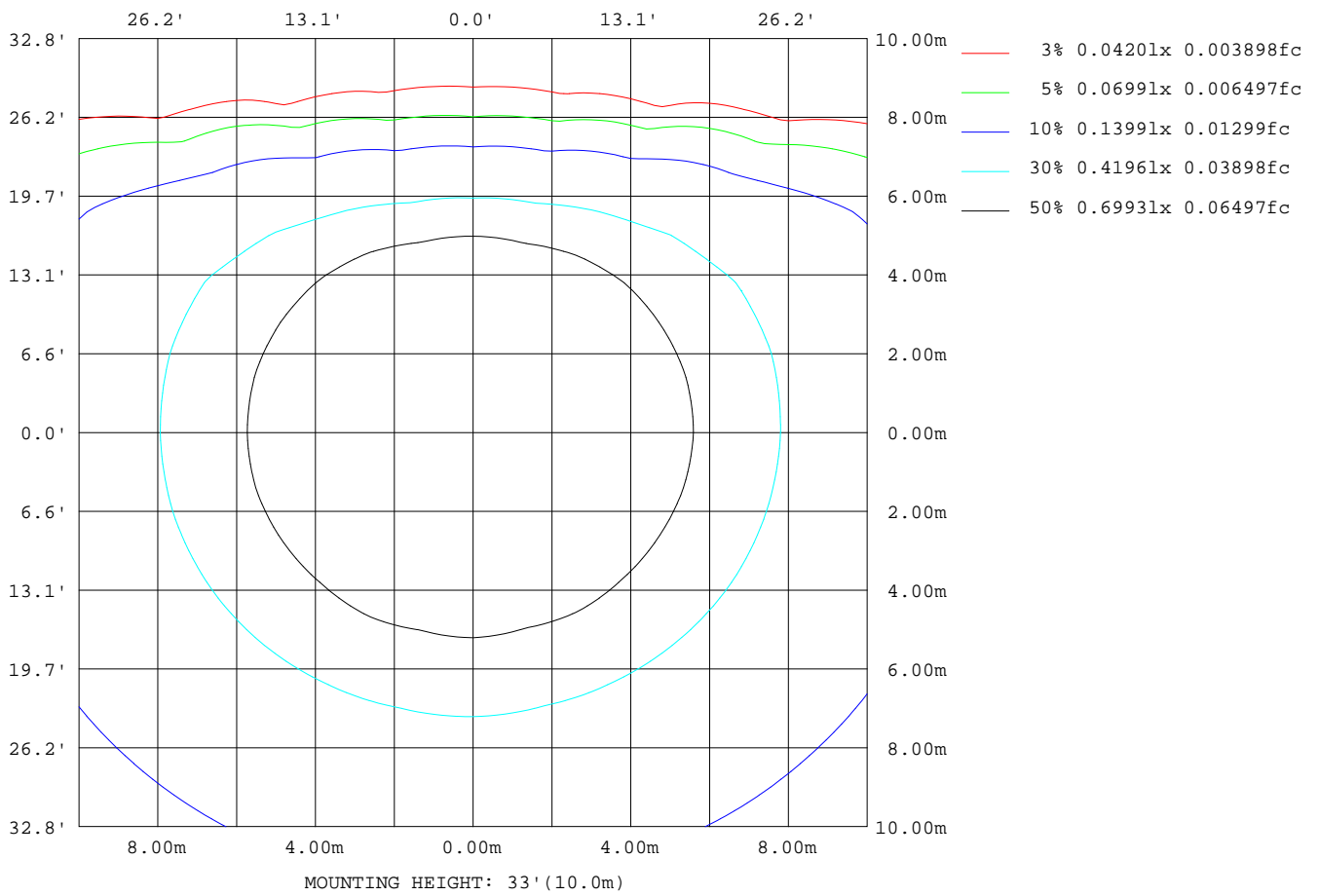
Note:The Curves indicate the illuminated area and the average illumination when the luminaire is at different distance.

C Range: 0 - 360DEG  
 C Interval: 15.0DEG  
 Test Speed: HIGH  
 Temperature: 25.0DEG  
 Operators:Alan Wang  
 Test Date:09 August 2023

γ Range: 0 - 180DEG  
 γ Interval: 1.0DEG  
 Test System:EVERFINE GO-R5000\_V2 SYSTEM V2.00.416  
 Humidity: 42.7%  
 Test Distance:2.500m [K=1.0391]  
 Remarks:

ISOLUX DIAGRAM

Test:U:120.00V I:0.1838A P:21.730W PF:0.9852 Freq:60.00Hz Lamp Flux:496.689x1 lm		
NAME: LED Wall Pack	TYPE:LED	WEIGHT:
SPEC.:ASD-LWS28S-MV-18D22CC-BK_5000K	DIM.:	SERIAL No.:
MFR.: ASD Lighting Corp	SUR.:	Shielding Angle:



C Range: 0 - 360DEG  
 C Interval: 15.0DEG  
 Test Speed: HIGH  
 Temperature: 25.0DEG  
 Operators: Alan Wang  
 Test Date: 09 August 2023

γ Range: 0 - 180DEG  
 γ Interval: 1.0DEG  
 Test System: EVERFINE GO-R5000\_V2 SYSTEM V2.00.416  
 Humidity: 42.7%  
 Test Distance: 2.500m [K=1.0391]  
 Remarks:

## LED Avg.L Report

Test:U:120.00V I:0.1838A P:21.730W PF:0.9852 Freq:60.00Hz Lamp Flux:496.689x1 lm		
NAME: LED Wall Pack	TYPE:LED	WEIGHT:
SPEC.:ASD-LWS28S-MV-18D22CC-BK_5000K	DIM.:	SERIAL No.:
MFR.: ASD Lighting Corp	SUR.:	Shielding Angle:

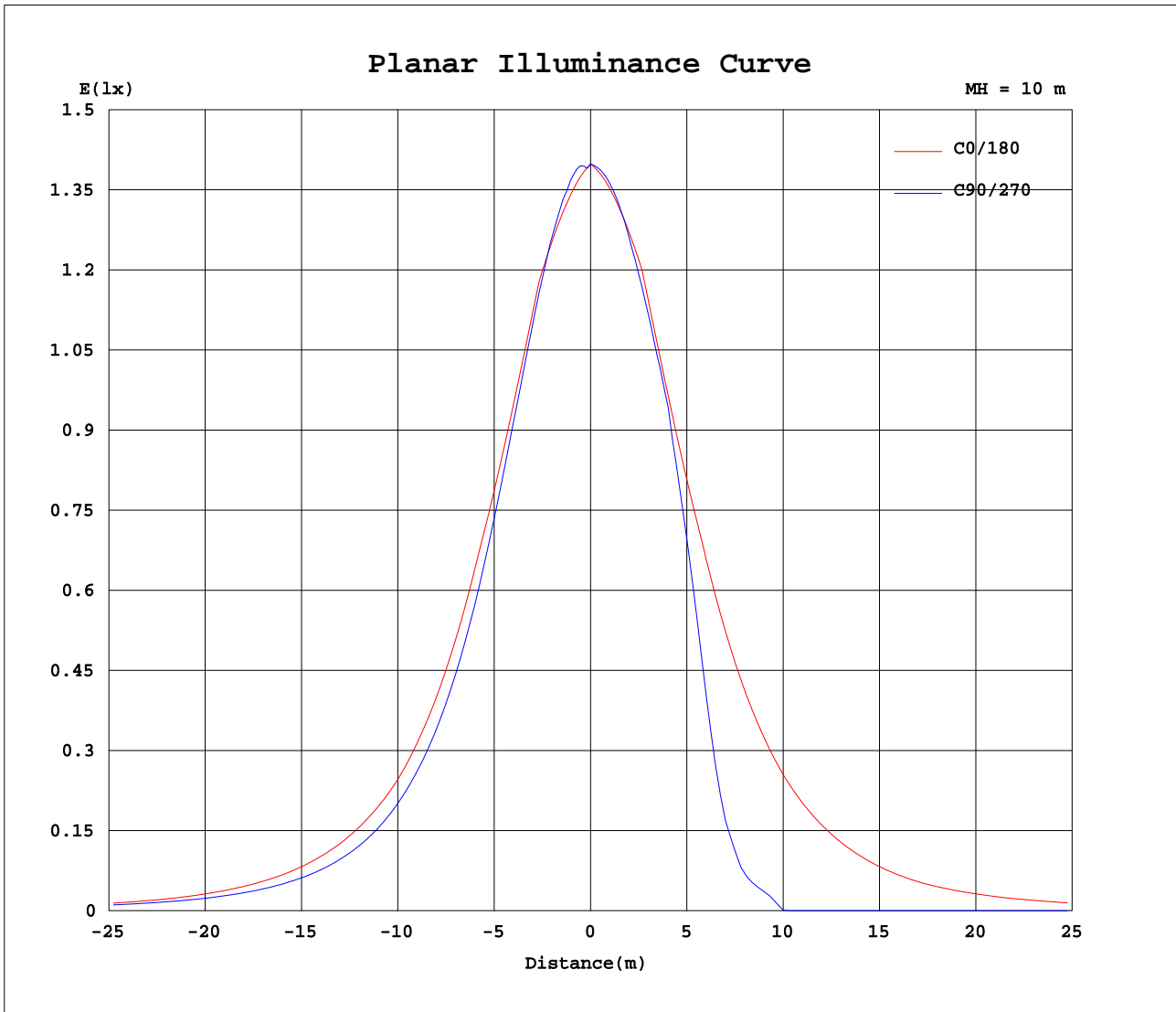
AvgL	cd/m2
L_0~180(65)av	1925
L_0~180(75)av	1544
L_0~180(85)av	3016
L_90~270(65)av	717
L_90~270(75)av	718
L_90~270(85)av	1624
L_45(65)av	840
L_45(75)av	814
L_45(85)av	1672

Standard: GB/T 29293-2012

C Range: 0 - 360DEG  
C Interval: 15.0DEG  
Test Speed: HIGH  
Temperature: 25.0DEG  
Operators: Alan Wang  
Test Date: 09 August 2023

$\gamma$  Range: 0 - 180DEG  
 $\gamma$  Interval: 1.0DEG  
Test System: EVERFINE GO-R5000\_V2 SYSTEM V2.00.416  
Humidity: 42.7%  
Test Distance: 2.500m [K=1.0391]  
Remarks:

Planar Illuminance Curve



C Range: 0 - 360DEG  
C Interval: 15.0DEG  
Test Speed: HIGH  
Temperature: 25.0DEG  
Operators: Alan Wang  
Test Date: 09 August 2023

$\gamma$  Range: 0 - 180DEG  
 $\gamma$  Interval: 1.0DEG  
Test System: EVERFINE GO-R5000\_V2 SYSTEM V2.00.416  
Humidity: 42.7%  
Test Distance: 2.500m [K=1.0391]  
Remarks:

LUMINOUS DISTRIBUTION INTENSITY DATA

Test:U:120.00V I:0.1838A P:21.730W PF:0.9852 Freq:60.00Hz Lamp Flux:496.689x1 lm		
NAME: LED Wall Pack	TYPE:LED	WEIGHT:
SPEC.:ASD-LWS28S-MV-18D22CC-BK_5000K	DIM.:	SERIAL No.:
MFR.: ASD Lighting Corp	SUR.:	Shielding Angle:

Table--1

UNIT: cd

C(DEG) γ (DEG)	0	15	30	45	60	75	90	105	120	135	150	165	180	195	210	225	240	255	270
0	140	140	140	140	140	140	140	140	140	140	140	140	140	140	140	140	140	140	140
5	137	136	137	138	138	139	139	139	139	138	138	137	138	138	137	138	138	138	139
10	134	134	134	133	133	134	135	134	134	134	135	135	135	135	135	134	134	134	135
15	131	130	129	127	126	126	128	127	128	129	131	133	133	133	131	129	128	128	130
20	122	121	121	120	117	116	118	117	119	123	124	124	124	124	124	123	121	120	122
25	113	112	110	109	107	105	107	106	109	112	113	115	116	115	114	113	112	105	105
30	104	102	99.1	96.4	94.9	92.2	93.6	93.6	97.4	99.6	103	106	107	107	104	100	90.8	76.0	72.8
35	92.3	90.6	88.0	84.6	81.8	79.6	80.6	81.0	84.2	87.6	91.7	94.3	95.2	95.5	93.7	81.0	55.8	35.2	30.8
40	80.9	79.0	76.3	73.2	69.5	67.8	68.2	69.1	71.8	76.2	79.5	82.3	83.7	83.9	79.6	54.2	23.1	13.2	11.8
45	69.5	67.5	65.0	61.8	58.6	57.1	56.9	58.2	60.7	64.5	67.9	70.6	72.1	72.5	61.5	25.8	8.81	3.59	0.33
50	60.2	57.3	54.4	51.4	48.7	46.8	46.9	48.0	50.8	53.9	57.0	60.0	61.7	61.8	41.1	10.4	0.13	0.05	0.05
55	50.8	47.4	44.8	42.1	39.6	38.1	38.2	39.1	41.5	44.4	47.3	49.8	51.2	50.5	23.0	1.39	0.10	0.04	0.04
60	41.5	37.7	35.8	33.9	31.8	30.6	30.7	31.5	33.5	36.0	38.2	39.6	40.8	38.8	10.1	1.35	0.04	0.03	0.03
65	32.6	29.5	27.7	26.4	25.1	24.3	24.4	25.3	26.8	28.4	29.9	31.7	33.0	28.7	4.37	1.39	0.05	0.03	0.03
70	23.7	21.6	21.0	20.2	19.3	19.0	19.1	19.8	20.8	21.9	23.2	24.2	25.2	19.6	4.33	1.38	0.03	0.03	0.03
75	14.8	13.9	14.6	15.1	14.7	14.7	15.0	15.4	16.0	16.5	16.6	16.7	17.4	11.0	4.37	1.38	0.04	0.03	0.02
80	12.4	11.2	11.2	10.9	11.7	11.8	12.0	12.2	12.5	12.0	12.7	13.3	14.3	9.46	4.38	1.38	0.03	0.04	0.02
85	10.0	9.03	9.72	10.3	10.5	11.2	11.4	11.3	10.9	10.8	10.5	10.3	11.2	8.77	4.38	1.35	0.04	0.04	0.02
90	7.61	6.86	8.26	9.72	10.7	11.4	11.6	11.4	10.9	9.74	8.37	7.36	8.07	8.14	4.44	1.37	0.04	0.05	0.03
95	10.2	9.21	9.89	10.4	10.6	11.4	11.4	11.4	10.8	10.5	10.2	10.0	10.9	8.76	4.35	1.32	0.03	0.04	0.02
100	12.7	11.5	11.6	11.2	11.8	12.0	12.1	12.1	12.1	11.3	12.0	12.7	13.8	9.43	4.35	1.32	0.03	0.03	0.02
105	15.3	14.3	15.0	15.4	14.9	14.7	14.7	15.0	15.3	15.8	15.7	15.9	16.7	10.9	4.38	1.31	0.03	0.03	0.02
110	22.7	21.3	21.1	20.5	19.7	19.2	19.1	19.5	20.4	21.4	22.5	23.4	24.8	19.5	4.37	1.30	0.03	0.02	0.02
115	30.2	28.4	27.5	26.6	25.6	24.9	24.8	25.4	26.6	28.0	29.4	31.1	32.8	28.6	4.49	1.29	0.05	0.03	0.02
120	37.6	35.8	35.1	33.8	32.3	31.3	31.3	31.8	33.5	35.6	37.5	39.2	40.9	38.7	11.6	1.31	0.04	0.03	0.03
125	47.2	45.0	43.7	41.8	40.0	38.8	38.9	39.4	41.4	44.0	46.4	48.8	51.0	50.5	25.9	3.06	0.10	0.04	0.04
130	56.8	54.3	52.5	50.5	48.7	47.3	47.3	48.1	50.5	53.0	55.8	58.7	61.1	61.6	43.9	14.3	3.34	0.25	0.06
135	66.3	64.0	62.3	60.2	57.9	56.9	56.7	57.7	59.7	62.8	65.8	68.7	71.2	72.1	62.2	33.4	13.5	8.63	7.67
140	77.1	74.5	72.7	70.8	68.0	66.8	67.2	67.7	69.9	73.5	76.4	79.2	81.7	82.7	78.1	59.6	34.0	21.6	19.9
145	87.8	85.3	83.7	81.1	79.1	77.5	78.3	78.4	80.9	83.7	87.3	89.9	92.2	93.3	91.2	81.5	65.1	50.9	49.0
150	98.5	95.9	93.8	91.7	90.9	88.6	89.9	89.5	92.6	94.3	97.1	100	103	103	101	97.3	91.8	82.8	82.6
155	107	105	103	103	101	99.7	101	100	103	105	107	109	111	111	110	109	107	104	105
160	115	114	113	113	111	110	112	110	112	115	116	117	118	119	119	118	116	115	117
165	124	122	121	119	118	118	120	119	119	121	123	125	126	126	126	124	123	123	124
170	127	126	125	125	125	125	126	126	125	126	127	128	128	128	128	128	128	128	129
175	129	129	129	129	129	130	131	130	130	130	130	130	130	130	130	131	131	131	132
180	132	132	132	132	132	132	132	132	132	132	132	132	132	132	132	132	132	132	132

C Range: 0 - 360DEG  
 C Interval: 15.0DEG  
 Test Speed: HIGH  
 Temperature: 25.0DEG  
 Operators: Alan Wang  
 Test Date: 09 August 2023

γ Range: 0 - 180DEG  
 γ Interval: 1.0DEG  
 Test System: EVERFINE GO-R5000\_V2 SYSTEM V2.00.416  
 Humidity: 42.7%  
 Test Distance: 2.500m [K=1.0391]  
 Remarks:

LUMINOUS DISTRIBUTION INTENSITY DATA

Test:U:120.00V I:0.1838A P:21.730W PF:0.9852 Freq:60.00Hz Lamp Flux:496.689x1 lm		
NAME: LED Wall Pack	TYPE:LED	WEIGHT:
SPEC.:ASD-LWS28S-MV-18D22CC-BK_5000K	DIM.:	SERIAL No.:
MFR.: ASD Lighting Corp	SUR.:	Shielding Angle:

Table--2

UNIT: cd

C(DEG)\ γ (DEG)	285	300	315	330	345														
0	140	140	140	140	140														
5	138	137	137	137	137														
10	134	133	133	133	134														
15	127	127	127	129	130														
20	119	119	121	121	122														
25	104	110	110	111	112														
30	75.3	88.9	97.8	101	104														
35	34.9	54.9	78.9	90.5	92.8														
40	13.0	22.4	52.9	77.0	81.6														
45	2.98	8.28	24.8	59.5	70.6														
50	0.05	0.11	9.34	39.6	61.1														
55	0.05	0.09	1.21	21.4	51.6														
60	0.04	0.05	1.13	9.25	41.7														
65	0.04	0.05	1.14	3.73	31.0														
70	0.03	0.04	1.10	3.73	20.8														
75	0.03	0.04	1.08	3.73	11.1														
80	0.03	0.04	1.08	3.68	9.49														
85	0.04	0.04	1.05	3.59	8.84														
90	0.04	0.03	1.07	3.56	8.25														
95	0.04	0.04	1.05	3.56	8.98														
100	0.03	0.04	1.10	3.64	9.78														
105	0.03	0.04	1.07	3.72	11.4														
110	0.03	0.04	1.09	4.10	20.3														
115	0.03	0.05	1.07	5.60	29.4														
120	0.03	0.05	1.94	15.3	38.7														
125	0.04	0.13	6.09	30.6	48.4														
130	0.52	5.68	18.6	47.5	58.0														
135	9.63	16.1	39.7	62.7	67.9														
140	23.9	39.4	63.7	75.6	78.5														
145	53.9	68.9	82.1	87.2	89.2														
150	84.0	92.4	95.1	97.4	99.4														
155	104	106	106	107	108														
160	114	114	116	116	116														
165	122	122	122	123	124														
170	128	127	127	127	127														
175	131	131	130	130	129														
180	132	132	132	132	132														

C Range: 0 - 360DEG  
 C Interval: 15.0DEG  
 Test Speed: HIGH  
 Temperature: 25.0DEG  
 Operators: Alan Wang  
 Test Date: 09 August 2023

γ Range: 0 - 180DEG  
 γ Interval: 1.0DEG  
 Test System: EVERFINE GO-R5000\_V2 SYSTEM V2.00.416  
 Humidity: 42.7%  
 Test Distance: 2.500m [K=1.0391]  
 Remarks: