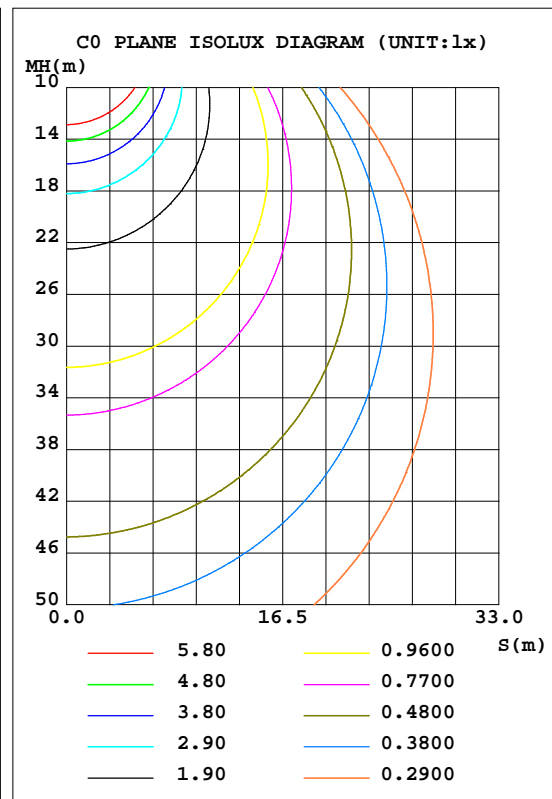
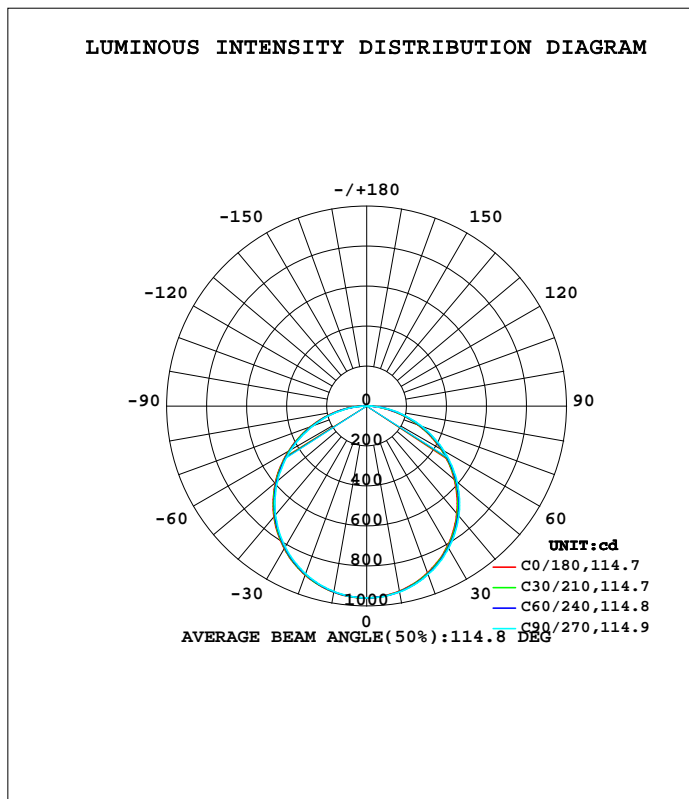


LUMINAIRE PHOTOMETRIC TEST REPORT

Test:U:120V I:0.2250A P:27W PF:0.9815 Lamp Flux:3213x1 lm		
NAME: ASD-ELP02-14D2750-STD	TYPE:LED PANEL	WEIGHT:
SPEC.:	DIM.: 1213*301mm	SERIAL No.:BLD20171211N01
MFR.: ASD Lighting corp	SUR.:0.256*1.17	Shielding Angle:

DATA OF LAMP		PHOTOMETRIC DATA Eff: 112.87 lm/W			
MODEL ASD-ELP02-14D2750-STD		I _{max} (cd)	959.4	S/MH(C0/180)	1.28
NOMINAL POWER(W)	27	LOR(%)	100.0	S/MH(C90/270)	1.26
RATED VOLTAGE(V)		TOTAL FLUX(lm)	3213	η UP, DN(C0-180)	0.0,49.9
NOMINAL FLUX(lm)	3213	CIE CLASS	DIRECT	η UP, DN(C180-360)	0.0,50.0
LAMPS INSIDE	1	η up(%)	0.0	CIBSE SHR NOM	1.25
TEST VOLTAGE(V)		η down(%)	100.0	CIBSE SHR MAX	1.35



C Range: 0 - 360DEG
 C Interval: 15.0DEG
 Test Speed: HIGH
 Temperature:30DEG
 Operators:NEIKO
 Test Date:2017-12-11

γ Range: 0 - 180DEG
 γ Interval: 1.0DEG
 Test System:EVERFINE GO-2000B_V1 SYSTEM V2.0.350
 Humidity:60%
 Test Distance:12.218m [K=1.0000]
 Remarks:

ZONAL FLUX DIAGRAM

ZONAL FLUX DIAGRAM:

γ	C0	C45	C90	C135	C180	C225	C270	C315	γ	Φ zone	Φ total	%lum,lamp
10	939.7	942.6	944.3	944.2	945.5	943.8	942.1	942.2	0- 10	90.80	90.80	3.2,3.2
20	888.6	893.7	897.2	897.0	899.8	896.2	893.0	892.9	10- 20	260.5	351.3	12.4,12.4
30	808.2	815.2	820.5	820.4	824.3	819.1	814.5	813.9	20- 30	396.2	747.4	26.3,26.3
40	701.9	710.5	717.3	716.9	722.0	715.5	709.9	709.1	30- 40	480.5	1228	43.2,43.2
50	573.2	583.0	590.6	590.3	596.5	588.9	582.6	581.4	40- 50	502.7	1731	60.9,60.9
60	427.4	436.5	445.7	444.6	452.0	444.4	436.6	436.3	50- 60	460.1	2191	77.1,77.1
70	271.7	281.0	289.9	289.1	297.4	289.6	281.5	280.9	60- 70	359.6	2550	89.8,89.8
80	120.8	128.3	135.7	135.6	144.2	136.7	129.4	128.7	70- 80	219.2	2770	97.5,97.5
90	1.030	1.188	4.222	4.707	10.33	5.571	1.541	1.541	80- 90	69.75	2839	100,100
100	1.302	1.323	1.306	1.325	0.8713	0.8730	0.9636	0.9012	90-100	1.206	2840	100,100
110	0	0	0	0	0	0	0	0	100-110	0.0599	2841	100,100
120	0	0	0	0	0	0	0	0	110-120	0	2841	100,100
130	0	0	0	0	0	0	0	0	120-130	0	2841	100,100
140	0	0	0	0	0	0	0	0	130-140	0	2841	100,100
150	0	0	0	0	0	0	0	0	140-150	0	2841	100,100
160	0	0	0	0	0	0	0	0	150-160	0	2841	100,100
170	0	0	0	0	0	0	0	0	160-170	0	2841	100,100
180	0	0	0	0	0	0	0	0	170-180	0	2841	100,100
DEG	LUMINOUS INTENSITY:cd									UNIT:lm		

Conical surface Flux(90deg): 1627.9 lm

%lum = 52.1%
%lamp = 52.1%

Conical surface Flux(120deg): 2409.1 lm

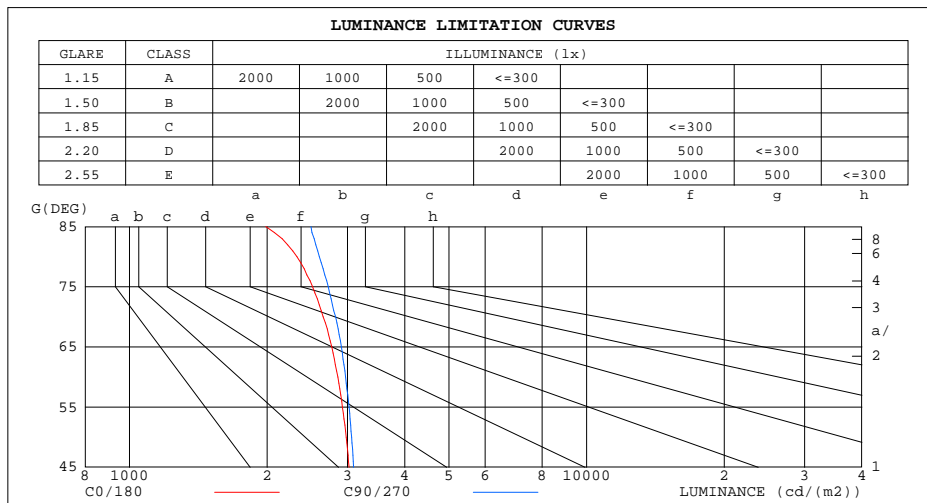
%lum = 77.1%
%lamp = 77.1%

C Range: 0 - 360DEG
C Interval: 15.0DEG
Test Speed: HIGH
Temperature:30DEG
Operators:NEIKO
Test Date:2017-12-11

γ Range: 0 - 180DEG
 γ Interval: 1.0DEG
Test System:EVERFINE GO-2000B_V1 SYSTEM V2.0.350
Humidity:60%
Test Distance:12.218m [K=1.0000]
Remarks:

LUMINANCE LIMITATION CURVES

Test:U:120V I:0.2250A P:27W PF:0.9815 Lamp Flux:3213x1 lm		
NAME: ASD-ELP02-14D2750-STD	TYPE:LED PANEL	WEIGHT:
SPEC.:	DIM.: 1213*301mm	SERIAL No.:BLD20171211N01
MFR.: ASD Lighting corp	SUR.:0.256*1.17	Shielding Angle:



LUMINANCE cd/(m2)		
G(DEG)	C0/180	C90/270
85	1989	2497
80	2324	2603
75	2516	2721
70	2654	2825
65	2770	2907
60	2856	2971
55	2925	3022
50	2979	3062
45	3024	3094

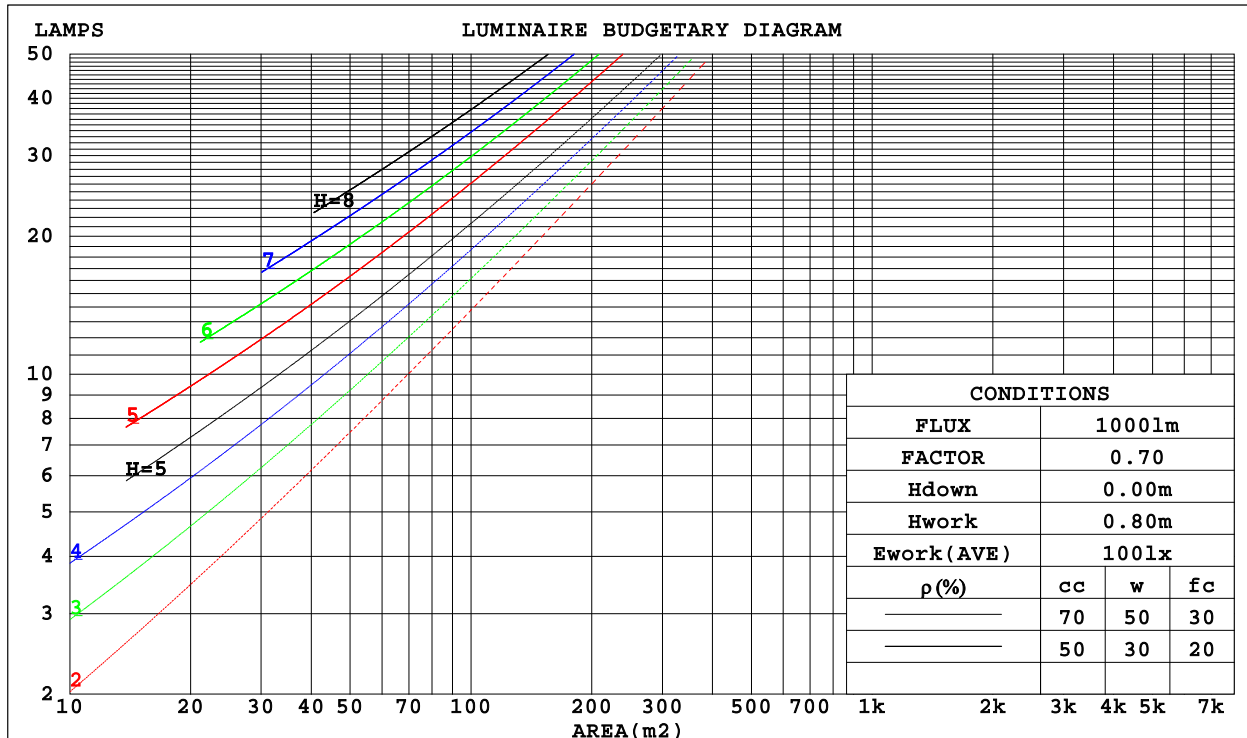
C Range: 0 - 360DEG
 C Interval: 15.0DEG
 Test Speed: HIGH
 Temperature:30DEG
 Operators:NEIKO
 Test Date:2017-12-11

γ Range: 0 - 180DEG
 γ Interval: 1.0DEG
 Test System:EVERFINE GO-2000B_V1 SYSTEM V2.0.350
 Humidity:60%
 Test Distance:12.218m [K=1.0000]
 Remarks:

CU AND LUMINAIRE BUDGETARY ESTIMATE DIAGRAM

Test:U:120V I:0.2250A P:27W PF:0.9815 Lamp Flux:3213x1 lm		
NAME: ASD-ELP02-14D2750-STD	TYPE:LED PANEL	WEIGHT:
SPEC.:	DIM.: 1213*301mm	SERIAL No.:BLD20171211N01
MFR.: ASD Lighting corp	SUR.:0.256*1.17	Shielding Angle:

ρ_{cc}	80%			70%			50%			30%			10%			0
ρ_w	50%	30%	10%	50%	30%	10%	50%	30%	10%	50%	30%	10%	50%	30%	10%	0
ρ_{fc}	20%			20%			20%			20%			20%			0
RCR	RCR:Room Cavity Ratio						Coefficients of Utilization(CU)									
0.0	1.19	1.19	1.19	1.16	1.16	1.16	1.11	1.11	1.11	1.06	1.06	1.06	1.02	1.02	1.02	.00
1.0	1.03	.99	.95	1.01	.97	.93	.97	.93	.90	.93	.90	.88	.89	.87	.85	.83
2.0	.90	.83	.77	.88	.81	.76	.84	.79	.74	.81	.76	.72	.78	.74	.71	.68
3.0	.79	.70	.63	.77	.69	.63	.74	.67	.62	.71	.65	.61	.69	.64	.60	.57
4.0	.69	.60	.54	.68	.60	.53	.66	.58	.52	.63	.57	.52	.61	.55	.51	.49
5.0	.62	.53	.46	.61	.52	.46	.59	.51	.45	.57	.50	.45	.55	.49	.44	.42
6.0	.56	.47	.40	.55	.46	.40	.53	.45	.39	.51	.44	.39	.50	.43	.39	.37
7.0	.50	.42	.35	.50	.41	.35	.48	.40	.35	.47	.40	.35	.45	.39	.34	.32
8.0	.46	.37	.31	.45	.37	.31	.44	.36	.31	.43	.36	.31	.41	.35	.31	.29
9.0	.42	.34	.28	.42	.34	.28	.40	.33	.28	.39	.33	.28	.38	.32	.28	.26
10.0	.39	.31	.26	.38	.31	.26	.37	.30	.25	.36	.30	.25	.36	.29	.25	.23



C Range: 0 - 360DEG
 C Interval: 15.0DEG
 Test Speed: HIGH
 Temperature:30DEG
 Operators:NEIKO
 Test Date:2017-12-11

γ Range: 0 - 180DEG
 γ Interval: 1.0DEG
 Test System:EVERFINE GO-2000B_V1 SYSTEM V2.0.350
 Humidity:60%
 Test Distance:12.218m [K=1.0000]
 Remarks:

WEC AND CCEC

Test:U:120V I:0.2250A P:27W PF:0.9815 Lamp Flux:3213x1 lm		
NAME: ASD-ELP02-14D2750-STD	TYPE:LED PANEL	WEIGHT:
SPEC.:	DIM.: 1213*301mm	SERIAL No.:BLD20171211N01
MFR.: ASD Lighting corp	SUR.:0.256*1.17	Shielding Angle:

pcc	80%			70%			50%			30%			10%			0
pw	50%	30%	10%	50%	30%	10%	50%	30%	10%	50%	30%	10%	50%	30%	10%	0
pfc	20%			20%			20%			20%			20%			0
RCR	RCR:Room Cavity Ratio						Wall Exitance Coefficients(WEC)									
0.0																
1.0	.321	.182	.058	.313	.179	.057	.300	.172	.055	.288	.166	.053	.277	.160	.052	
2.0	.299	.164	.050	.293	.161	.050	.281	.156	.049	.270	.151	.047	.260	.147	.046	
3.0	.275	.147	.044	.270	.144	.043	.259	.141	.043	.250	.137	.042	.241	.133	.041	
4.0	.253	.132	.039	.248	.130	.038	.239	.127	.038	.230	.124	.037	.222	.121	.037	
5.0	.234	.119	.034	.229	.118	.034	.221	.115	.034	.213	.113	.033	.206	.110	.033	
6.0	.216	.108	.031	.212	.107	.031	.205	.105	.031	.198	.103	.030	.192	.101	.030	
7.0	.201	.099	.028	.197	.098	.028	.191	.097	.028	.185	.095	.028	.179	.093	.027	
8.0	.187	.092	.026	.184	.091	.026	.178	.089	.025	.173	.088	.025	.168	.086	.025	
9.0	.175	.085	.024	.173	.084	.024	.167	.083	.023	.163	.081	.023	.158	.080	.023	
10.0	.165	.079	.022	.162	.078	.022	.158	.077	.022	.153	.076	.022	.149	.075	.021	

pcc	80%			70%			50%			30%			10%			0
pw	50%	30%	10%	50%	30%	10%	50%	30%	10%	50%	30%	10%	50%	30%	10%	0
pfc	20%			20%			20%			20%			20%			0
RCR	RCR:Room Cavity Ratio						Ceiling Cavity Exitance Coefficients(CCEC)									
0.0	.191	.191	.191	.163	.163	.163	.111	.111	.111	.064	.064	.064	.020	.020	.020	
1.0	.181	.156	.134	.155	.134	.115	.106	.092	.080	.061	.053	.046	.020	.017	.015	
2.0	.174	.132	.097	.149	.114	.084	.102	.079	.059	.059	.046	.034	.019	.015	.011	
3.0	.166	.115	.074	.142	.099	.064	.098	.069	.045	.056	.040	.026	.018	.013	.009	
4.0	.158	.101	.058	.136	.088	.050	.093	.061	.036	.054	.036	.021	.017	.012	.007	
5.0	.151	.091	.047	.129	.079	.041	.089	.055	.029	.052	.032	.017	.017	.011	.006	
6.0	.143	.083	.039	.123	.072	.034	.085	.050	.024	.049	.029	.014	.016	.010	.005	
7.0	.137	.076	.033	.117	.066	.029	.081	.046	.021	.047	.027	.012	.015	.009	.004	
8.0	.130	.070	.029	.112	.061	.025	.077	.043	.018	.045	.025	.011	.015	.008	.004	
9.0	.124	.065	.025	.107	.056	.022	.074	.040	.016	.043	.023	.009	.014	.008	.003	
10.0	.118	.061	.023	.102	.053	.020	.071	.037	.014	.041	.022	.008	.013	.007	.003	

C Range: 0 - 360DEG
 C Interval: 15.0DEG
 Test Speed: HIGH
 Temperature:30DEG
 Operators:NEIKO
 Test Date:2017-12-11

γ Range: 0 - 180DEG
 γ Interval: 1.0DEG
 Test System:EVERFINE GO-2000B_V1 SYSTEM V2.0.350
 Humidity:60%
 Test Distance:12.218m [K=1.0000]
 Remarks:

UGR(Unified Glare Rating) Table

Test:U:120V I:0.2250A P:27W PF:0.9815 Lamp Flux:3213x1 lm										
NAME: ASD-ELP02-14D2750-STD					TYPE:LED PANEL			WEIGHT:		
SPEC.:					DIM.: 1213*301mm			SERIAL No.:BLD20171211N01		
MFR.: ASD Lighting corp					SUR.:0.256*1.17			Shielding Angle:		
ceiling/cavity	0.7	0.7	0.5	0.5	0.3	0.7	0.7	0.5	0.5	0.3
walls	0.5	0.3	0.5	0.3	0.3	0.5	0.3	0.5	0.3	0.3
working plane	0.2	0.2	0.2	0.2	0.2	0.2	0.2	0.2	0.2	0.2
Room dimensions	Viewed crosswise					Viewed endwise				
x = 2H y = 2H	16.6	18.1	16.8	18.3	18.5	16.7	18.3	17.0	18.5	18.7
3H 4H 6H 8H 12H	18.1	19.6	18.4	19.8	20.0	18.4	19.8	18.7	20.0	20.3
	18.8	20.1	19.1	20.4	20.7	19.1	20.4	19.4	20.7	20.9
4H 2H	19.3	20.6	19.6	20.8	21.1	19.6	20.9	19.9	21.2	21.4
3H 4H 6H 8H	19.4	20.7	19.8	21.0	21.2	19.8	21.0	20.1	21.3	21.6
12H	19.5	20.7	19.9	21.0	21.3	19.9	21.1	20.3	21.4	21.7
8H 4H	17.2	18.6	17.5	18.8	19.1	17.3	18.7	17.7	19.0	19.2
6H 8H 12H	19.0	20.2	19.3	20.5	20.8	19.2	20.4	19.5	20.7	21.0
	19.8	20.9	20.1	21.2	21.5	20.0	21.1	20.4	21.4	21.7
12H 4H	20.4	21.3	20.8	21.7	22.1	20.7	21.7	21.1	22.0	22.4
6H	20.6	21.5	21.0	21.9	22.3	20.9	21.8	21.4	22.2	22.6
8H	20.7	21.6	21.2	22.0	22.4	21.1	22.0	21.6	22.4	22.8
	20.1	21.0	20.5	21.3	21.7	20.3	21.2	20.7	21.6	21.9
	20.9	21.6	21.3	22.0	22.4	21.1	21.9	21.6	22.3	22.7
	21.2	21.8	21.6	22.3	22.7	21.5	22.2	21.9	22.6	23.0
	21.4	22.0	21.9	22.4	22.9	21.8	22.4	22.3	22.8	23.3
	20.1	20.9	20.5	21.3	21.7	20.3	21.1	20.7	21.5	21.9
	20.9	21.6	21.4	22.0	22.5	21.2	21.9	21.7	22.3	22.7
	21.3	21.9	21.8	22.3	22.8	21.6	22.2	22.1	22.6	23.1
Variations with the observer position at spacings:										
S = 1.0H	+ 0.1 / - 0.2					+ 0.1 / - 0.2				
1.5H	+ 0.2 / - 0.3					+ 0.2 / - 0.3				
2.0H	+ 0.1 / - 0.3					+ 0.1 / - 0.3				

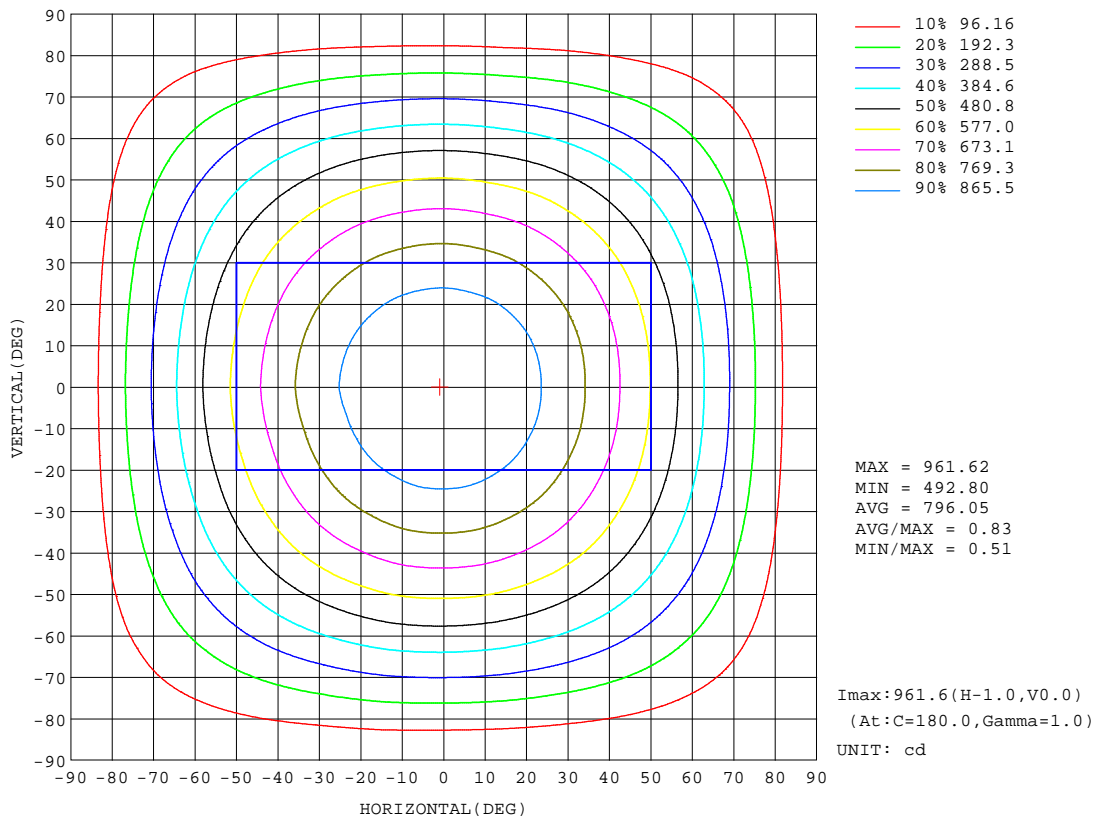
CIE Pub.117 Corrected 3125 lm Total Lamp Luminous Flux.(8log(F/F0) = 3.6)

C Range: 0 - 360DEG
C Interval: 15.0DEG
Test Speed: HIGH
Temperature:30DEG
Operators:NEIKO
Test Date:2017-12-11

γ Range: 0 - 180DEG
 γ Interval: 1.0DEG
Test System:EVERFINE GO-2000B_V1 SYSTEM V2.0.350
Humidity:60%
Test Distance:12.218m [K=1.0000]
Remarks:

ISOCANDELA DIAGRAM

Test:U:120V I:0.2250A P:27W PF:0.9815 Lamp Flux:3213x1 lm		
NAME: ASD-ELP02-14D2750-STD	TYPE:LED PANEL	WEIGHT:
SPEC.:	DIM.: 1213*301mm	SERIAL No.:BLD20171211N01
MFR.: ASD Lighting corp	SUR.:0.256*1.17	Shielding Angle:



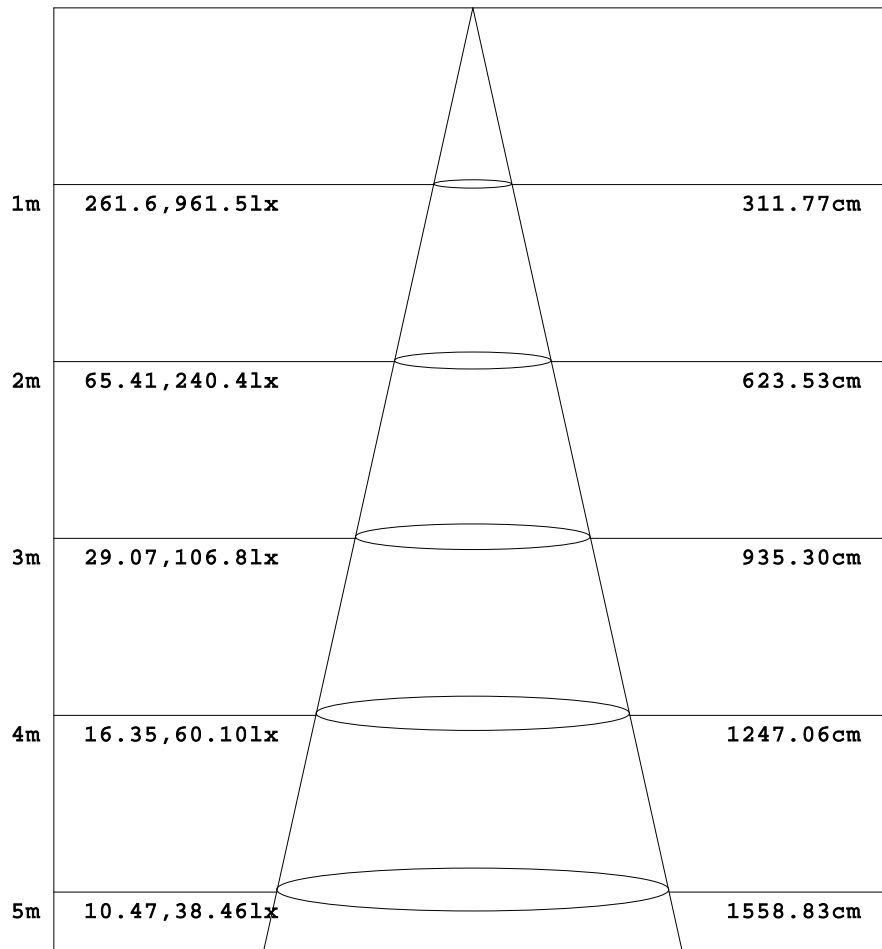
C Range: 0 - 360DEG
 C Interval: 15.0DEG
 Test Speed: HIGH
 Temperature:30DEG
 Operators:NEIKO
 Test Date:2017-12-11

γ Range: 0 - 180DEG
 γ Interval: 1.0DEG
 Test System:EVERFINE GO-2000B_V1 SYSTEM V2.0.350
 Humidity:60%
 Test Distance:12.218m [K=1.0000]
 Remarks:

AAI Figure

Test:U:120V I:0.2250A P:27W PF:0.9815 Lamp Flux:3213x1 lm		
NAME: ASD-ELP02-14D2750-STD	TYPE:LED PANEL	WEIGHT:
SPEC.:	DIM.: 1213*301mm	SERIAL No.:BLD20171211N01
MFR.: ASD Lighting corp	SUR.:0.256*1.17	Shielding Angle:

Flux out:2105 lm



Height Eavg, Emax Angle:114.64deg Diameter

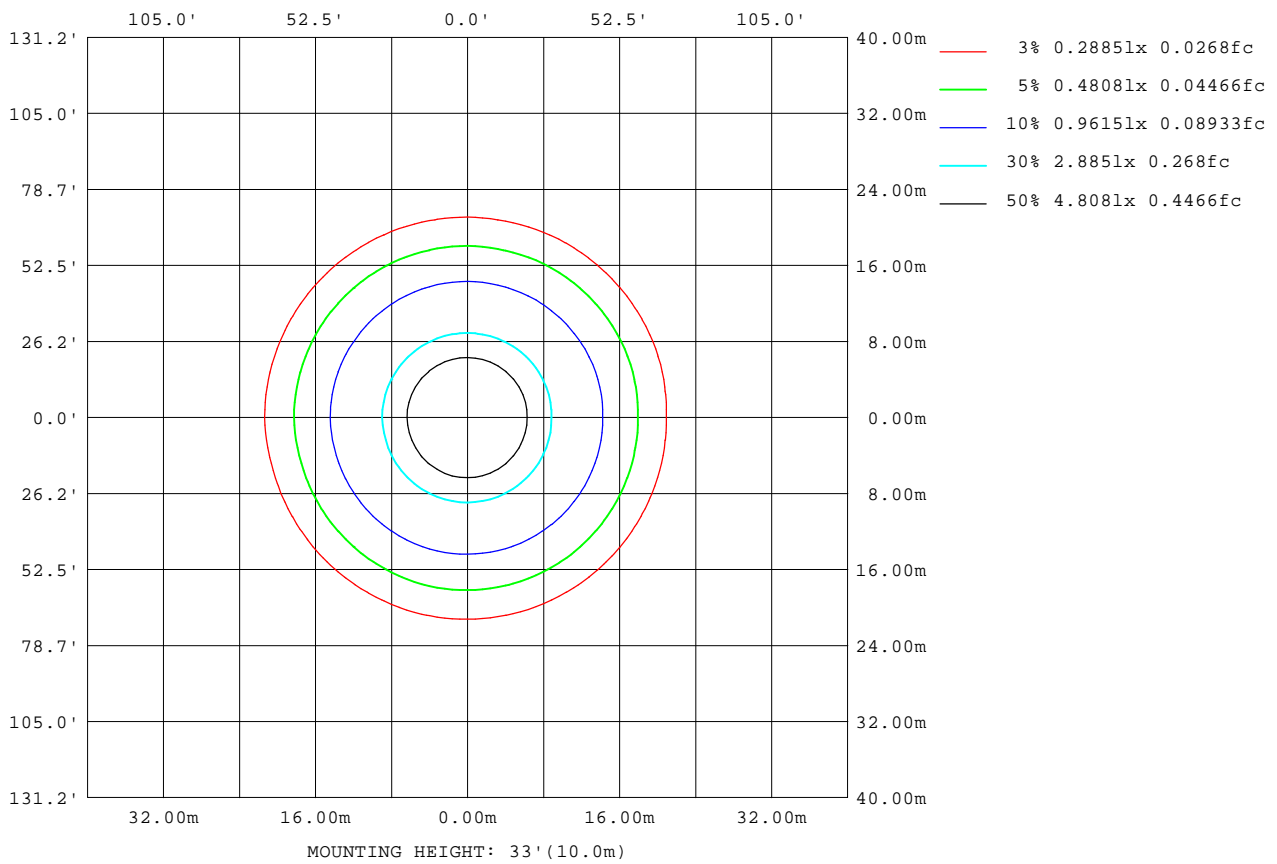
Note:The Curves indicate the illuminated area and the average illumination when the luminaire is at different distance.

C Range: 0 - 360DEG
 C Interval: 15.0DEG
 Test Speed: HIGH
 Temperature:30DEG
 Operators:NEIKO
 Test Date:2017-12-11

γ Range: 0 - 180DEG
 γ Interval: 1.0DEG
 Test System:EVERFINE GO-2000B_V1 SYSTEM V2.0.350
 Humidity:60%
 Test Distance:12.218m [K=1.0000]
 Remarks:

ISOLUX DIAGRAM

Test:U:120V I:0.2250A P:27W PF:0.9815 Lamp Flux:3213x1 lm		
NAME: ASD-ELP02-14D2750-STD	TYPE:LED PANEL	WEIGHT:
SPEC.:	DIM.: 1213*301mm	SERIAL No.:BLD20171211N01
MFR.: ASD Lighting corp	SUR.:0.256*1.17	Shielding Angle:



C Range: 0 - 360DEG
 C Interval: 15.0DEG
 Test Speed: HIGH
 Temperature:30DEG
 Operators:NEIKO
 Test Date:2017-12-11

γ Range: 0 - 180DEG
 γ Interval: 1.0DEG
 Test System:EVERFINE GO-2000B_V1 SYSTEM V2.0.350
 Humidity:60%
 Test Distance:12.218m [K=1.0000]
 Remarks:

LED Avg.L Report

Test:U:120V I:0.2250A P:27W PF:0.9815 Lamp Flux:3213x1 lm		
NAME: ASD-ELP02-14D2750-STD	TYPE:LED PANEL	WEIGHT:
SPEC.:	DIM.: 1213*301mm	SERIAL No.:BLD20171211N01
MFR.: ASD Lighting corp	SUR.:0.256*1.17	Shielding Angle:

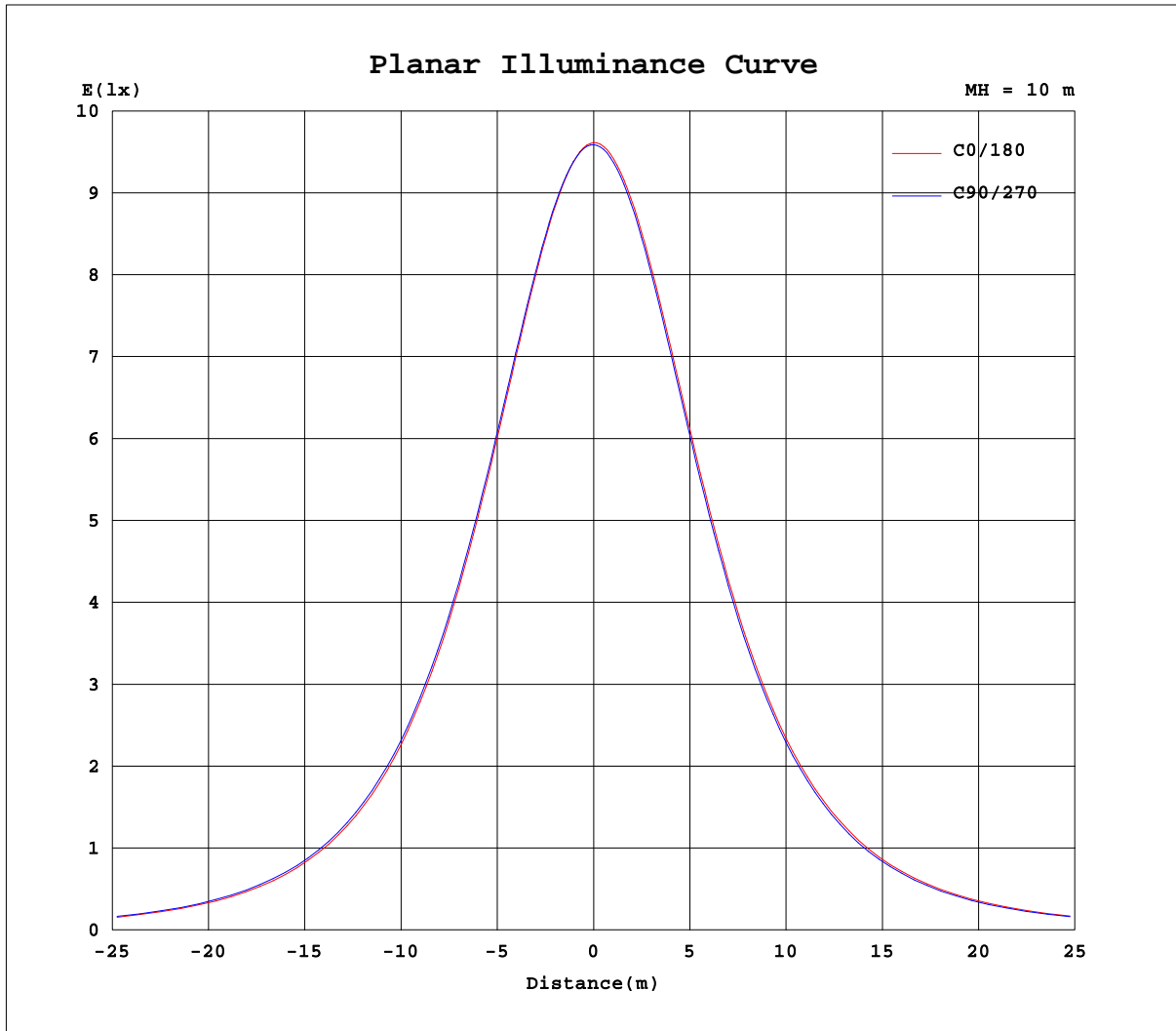
AvgL	cd/m2
L_0~180(65)av	2862
L_0~180(75)av	2669
L_0~180(85)av	2395
L_90~270(65)av	2872
L_90~270(75)av	2674
L_90~270(85)av	2400
L_45(65)av	2867
L_45(75)av	2670
L_45(85)av	2391

Standard: GB/T 29293-2012

C Range: 0 - 360DEG
C Interval: 15.0DEG
Test Speed: HIGH
Temperature:30DEG
Operators:NEIKO
Test Date:2017-12-11

γ Range: 0 - 180DEG
 γ Interval: 1.0DEG
Test System:EVERFINE GO-2000B_V1 SYSTEM V2.0.350
Humidity:60%
Test Distance:12.218m [K=1.0000]
Remarks:

Planar Illuminance Curve



C Range: 0 - 360DEG
 C Interval: 15.0DEG
 Test Speed: HIGH
 Temperature: 30DEG
 Operators: NEIKO
 Test Date: 2017-12-11

γ Range: 0 - 180DEG
 γ Interval: 1.0DEG
 Test System: EVERFINE GO-2000B_V1 SYSTEM V2.0.350
 Humidity: 60%
 Test Distance: 12.218m [K=1.0000]
 Remarks:

LUMINOUS DISTRIBUTION INTENSITY DATA

Test:U:120.2V I:0.2307A P:27.68W PF:0.9815 Lamp Flux:3124.31x1 lm		
NAME: ASD-ELP02-14D2750-STD	TYPE:LED PANEL	WEIGHT:
SPEC.:	DIM.: 1213*301mm	SERIAL No.:BLD20171211N01
MFR.: ASD Lighting corp	SUR.:0.256*1.17	Shielding Angle:

Table--1

UNIT: cd

C(DEG) γ (DEG)	0	15	30	45	60	75	90	105	120	135	150	165	180	195	210	225	240	255	270
0	959	959	959	959	959	959	959	959	959	959	959	959	959	959	959	959	959	959	959
5	954	954	955	955	955	956	956	956	956	956	956	955	957	956	956	956	955	955	955
10	940	941	942	943	943	944	944	945	944	944	944	944	946	945	945	944	943	942	942
15	918	919	920	922	923	924	925	926	925	925	924	924	927	926	925	924	923	922	921
20	889	890	891	894	895	897	897	899	897	897	896	896	900	898	898	896	895	893	893
25	852	854	855	858	859	862	862	864	862	862	861	861	865	864	863	861	860	858	857
30	808	811	812	815	817	820	821	822	820	820	819	819	824	823	822	819	818	815	815
35	758	761	762	766	768	771	772	774	772	772	770	771	776	774	773	770	769	766	765
40	702	705	707	710	713	716	717	720	717	717	715	716	722	720	719	716	714	711	710
45	640	643	645	649	651	655	657	659	656	656	654	655	662	659	658	655	653	649	649
50	573	577	578	583	585	590	591	594	590	590	588	589	596	594	593	589	587	583	583
55	502	504	507	511	514	518	520	522	519	519	518	518	526	524	522	518	516	513	511
60	427	430	433	436	440	444	446	448	445	445	443	444	452	450	448	444	442	438	437
65	350	353	355	359	363	367	369	371	368	367	366	367	375	373	371	368	365	362	360
70	272	275	277	281	284	288	290	292	289	289	288	289	297	295	293	290	287	283	282
75	195	197	199	203	206	210	211	214	211	211	210	211	220	217	215	212	209	205	204
80	121	123	125	128	131	135	136	138	135	136	135	136	144	142	140	137	134	131	129
85	51.9	53.9	55.4	58.5	60.6	64.0	65.3	67.6	65.0	65.5	64.6	65.8	73.4	71.2	69.9	66.6	64.6	61.3	60.2
90	1.03	0.97	1.03	1.19	1.64	3.59	4.22	6.24	4.37	4.71	3.88	4.64	10.3	8.79	7.88	5.57	4.37	2.15	1.54
95	1.11	1.17	1.07	1.15	1.09	1.17	1.06	1.15	1.05	1.16	1.04	1.14	0.78	0.71	0.80	0.72	0.85	0.82	0.86
100	1.30	1.32	1.30	1.32	1.31	1.33	1.31	1.33	1.31	1.32	1.29	1.29	0.87	0.87	0.87	0.87	0.92	0.96	0.96
105	0.00	0.00	0.00	0.00	0.00	0.00	0.00	0.00	0.00	0.00	0.00	0.00	0.00	0.00	0.00	0.00	0.00	0.00	0.00
110	0.00	0.00	0.00	0.00	0.00	0.00	0.00	0.00	0.00	0.00	0.00	0.00	0.00	0.00	0.00	0.00	0.00	0.00	0.00
115	0.00	0.00	0.00	0.00	0.00	0.00	0.00	0.00	0.00	0.00	0.00	0.00	0.00	0.00	0.00	0.00	0.00	0.00	0.00
120	0.00	0.00	0.00	0.00	0.00	0.00	0.00	0.00	0.00	0.00	0.00	0.00	0.00	0.00	0.00	0.00	0.00	0.00	0.00
125	0.00	0.00	0.00	0.00	0.00	0.00	0.00	0.00	0.00	0.00	0.00	0.00	0.00	0.00	0.00	0.00	0.00	0.00	0.00
130	0.00	0.00	0.00	0.00	0.00	0.00	0.00	0.00	0.00	0.00	0.00	0.00	0.00	0.00	0.00	0.00	0.00	0.00	0.00
135	0.00	0.00	0.00	0.00	0.00	0.00	0.00	0.00	0.00	0.00	0.00	0.00	0.00	0.00	0.00	0.00	0.00	0.00	0.00
140	0.00	0.00	0.00	0.00	0.00	0.00	0.00	0.00	0.00	0.00	0.00	0.00	0.00	0.00	0.00	0.00	0.00	0.00	0.00
145	0.00	0.00	0.00	0.00	0.00	0.00	0.00	0.00	0.00	0.00	0.00	0.00	0.00	0.00	0.00	0.00	0.00	0.00	0.00
150	0.00	0.00	0.00	0.00	0.00	0.00	0.00	0.00	0.00	0.00	0.00	0.00	0.00	0.00	0.00	0.00	0.00	0.00	0.00
155	0.00	0.00	0.00	0.00	0.00	0.00	0.00	0.00	0.00	0.00	0.00	0.00	0.00	0.00	0.00	0.00	0.00	0.00	0.00
160	0.00	0.00	0.00	0.00	0.00	0.00	0.00	0.00	0.00	0.00	0.00	0.00	0.00	0.00	0.00	0.00	0.00	0.00	0.00
165	0.00	0.00	0.00	0.00	0.00	0.00	0.00	0.00	0.00	0.00	0.00	0.00	0.00	0.00	0.00	0.00	0.00	0.00	0.00
170	0.00	0.00	0.00	0.00	0.00	0.00	0.00	0.00	0.00	0.00	0.00	0.00	0.00	0.00	0.00	0.00	0.00	0.00	0.00
175	0.00	0.00	0.00	0.00	0.00	0.00	0.00	0.00	0.00	0.00	0.00	0.00	0.00	0.00	0.00	0.00	0.00	0.00	0.00
180	0.00	0.00	0.00	0.00	0.00	0.00	0.00	0.00	0.00	0.00	0.00	0.00	0.00	0.00	0.00	0.00	0.00	0.00	0.00

C Range: 0 - 360DEG
 C Interval: 15.0DEG
 Test Speed: HIGH
 Temperature:30DEG
 Operators:NEIKO
 Test Date:2017-12-11

γ Range: 0 - 180DEG
 γ Interval: 1.0DEG
 Test System:EVERFINE GO-2000B_V1 SYSTEM V2.0.350
 Humidity:60%
 Test Distance:12.218m [K=1.0000]
 Remarks:

LUMINOUS DISTRIBUTION INTENSITY DATA

Test:U:120.2V I:0.2307A P:27.68W PF:0.9815 Lamp Flux:3124.31x1 lm		
NAME: ASD-ELP02-14D2750-STD	TYPE:LED PANEL	WEIGHT:
SPEC.:	DIM.: 1213*301mm	SERIAL No.:BLD20171211N01
MFR.: ASD Lighting corp	SUR.:0.256*1.17	Shielding Angle:

Table--2

UNIT: cd

C(DEG) γ (DEG)	285	300	315	330	345														
0	959	959	959	959	959														
5	954	955	955	955	955														
10	942	942	942	943	942														
15	921	922	921	922	921														
20	892	893	893	893	892														
25	856	857	857	857	856														
30	813	814	814	815	813														
35	763	765	765	765	764														
40	707	710	709	710	708														
45	646	649	648	649	647														
50	580	582	581	583	581														
55	509	511	511	511	510														
60	434	437	436	437	436														
65	357	359	359	360	359														
70	279	281	281	282	281														
75	201	204	203	204	203														
80	127	129	129	130	129														
85	57.6	60.0	59.4	60.4	59.0														
90	0.96	1.74	1.54	1.87	1.38														
95	0.87	0.85	0.75	0.83	0.72														
100	0.97	0.96	0.90	0.90	0.87														
105	0.00	0.00	0.00	0.00	0.00														
110	0.00	0.00	0.00	0.00	0.00														
115	0.00	0.00	0.00	0.00	0.00														
120	0.00	0.00	0.00	0.00	0.00														
125	0.00	0.00	0.00	0.00	0.00														
130	0.00	0.00	0.00	0.00	0.00														
135	0.00	0.00	0.00	0.00	0.00														
140	0.00	0.00	0.00	0.00	0.00														
145	0.00	0.00	0.00	0.00	0.00														
150	0.00	0.00	0.00	0.00	0.00														
155	0.00	0.00	0.00	0.00	0.00														
160	0.00	0.00	0.00	0.00	0.00														
165	0.00	0.00	0.00	0.00	0.00														
170	0.00	0.00	0.00	0.00	0.00														
175	0.00	0.00	0.00	0.00	0.00														
180	0.00	0.00	0.00	0.00	0.00														

C Range: 0 - 360DEG
 C Interval: 15.0DEG
 Test Speed: HIGH
 Temperature:30DEG
 Operators:NEIKO
 Test Date:2017-12-11

γ Range: 0 - 180DEG
 γ Interval: 1.0DEG
 Test System:EVERFINE GO-2000B_V1 SYSTEM V2.0.350
 Humidity:60%
 Test Distance:12.218m [K=1.0000]
 Remarks: