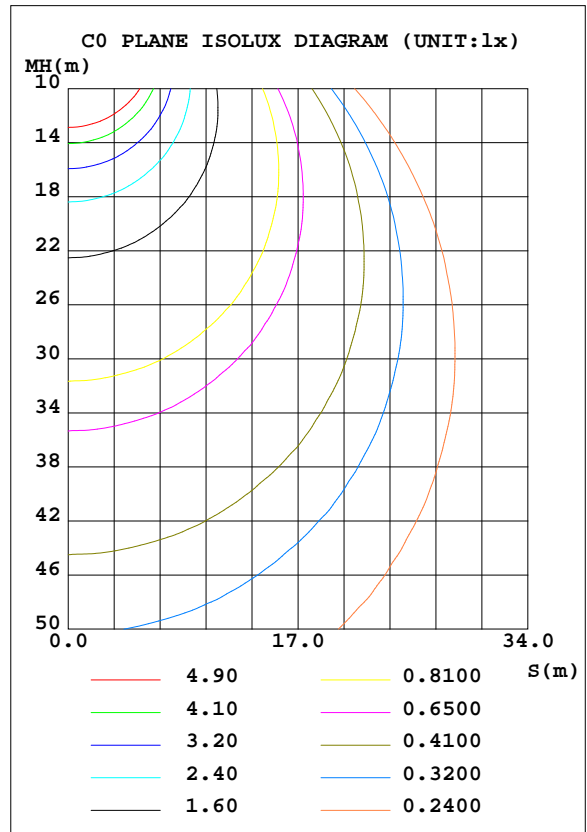
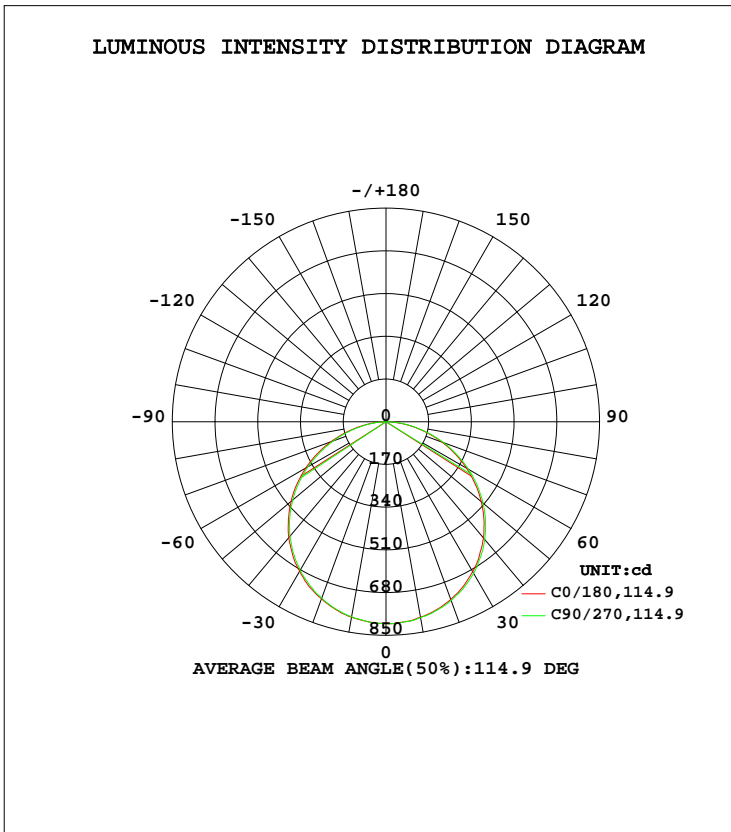


LUMINAIRE PHOTOMETRIC TEST REPORT

Test:U:120.02V I:0.2237A P:26.400W PF:0.9833 Freq:60.00Hz Lamp Flux:2373.17x1 lm		
NAME: ASD-MPR-15D28WH 5000K	TYPE: N/A	WEIGHT: N/A
SPEC.:LED Luminaires	DIM.: N/A	SERIAL No.: N/A
MFR.: ASD Lighting Corp	SUR.: N/A	Shielding Angle: N/A

DATA OF LAMP		PHOTOMETRIC DATA			
MODEL	ASD-MPR-15D28WH 5000K	Imax(cd)	806.8	S/MH(C0/180)	1.28
NOMINAL POWER(W)	28W	LOR(%)	100.0	S/MH(C90/270)	1.29
RATED VOLTAGE(V)	120	TOTAL FLUX(lm)	2373.2	η UP, DN(C0-180)	0.0,49.3
NOMINAL FLUX(lm)	2373.17	CIE CLASS	DIRECT	η UP, DN(C180-360)	0.0,50.7
LAMPS INSIDE	1	η up(%)	0.0	CIBSE SHR NOM	1.25
TEST VOLTAGE(V)	120	η down(%)	100.0	CIBSE SHR MAX	1.35



C Range: 0 - 360DEG
 C Interval: 22.5DEG
 Test Speed: HIGH
 Temperature:25.2DEG
 Operators:Water
 Test Date:2024-08-28

γ Range: 0 - 180DEG
 γ Interval: 1.0DEG
 Test System:EVERFINE GO-R5000_V2 SYSTEM V2.00.446
 Humidity:48%
 Test Distance:2.519m [K=1.0000]
 Remarks:

ZONAL FLUX DIAGRAM

ZONAL FLUX DIAGRAM:

γ	C0	C45	C90	C135	C180	C225	C270	C315	γ	Φ zone	Φ total	%lum, lamp
10	790.0	791.9	788.0	788.9	789.6	793.7	791.5	793.1	0- 10	76.17	76.17	3.21,3.21
20	749.5	750.7	747.0	748.8	753.3	757.0	757.2	757.7	10- 20	219.0	295.1	12.4,12.4
30	687.1	686.4	683.6	685.4	689.6	695.3	697.0	696.7	20- 30	334.1	629.3	26.5,26.5
40	601.9	598.4	594.4	594.6	603.8	609.2	611.7	611.6	30- 40	406.4	1036	43.6,43.6
50	492.6	488.8	484.1	485.9	494.6	501.9	504.3	504.2	40- 50	425.3	1461	61.6,61.6
60	368.4	363.3	358.6	359.5	371.1	376.1	378.9	379.2	50- 60	387.6	1849	77.9,77.9
70	233.7	226.9	222.9	225.1	236.2	241.3	243.2	244.4	60- 70	299.2	2148	90.5,90.5
80	100.4	95.59	92.16	94.42	103.8	107.7	109.5	110.0	70- 80	176.2	2324	97.9,97.9
90	0	0	0	0	0	0	0	0	80- 90	49.30	2373	100,100
100	0	0	0	0	0	0	0	0	90-100	0	2373	100,100
110	0	0	0	0	0	0	0	0	100-110	0	2373	100,100
120	0	0	0	0	0	0	0	0	110-120	0	2373	100,100
130	0	0	0	0	0	0	0	0	120-130	0	2373	100,100
140	0	0	0	0	0	0	0	0	130-140	0	2373	100,100
150	0	0	0	0	0	0	0	0	140-150	0	2373	100,100
160	0	0	0	0	0	0	0	0	150-160	0	2373	100,100
170	0	0	0	0	0	0	0	0	160-170	0	2373	100,100
180	0	0	0	0	0	0	0	0	170-180	0	2373	100,100
DEG	LUMINOUS INTENSITY:cd									UNIT:lm		

Conical surface Flux(90deg): 1249.5 lm

%lum = 52.7%
 %lamp = 52.7%

Conical surface Flux(120deg): 1848.5 lm

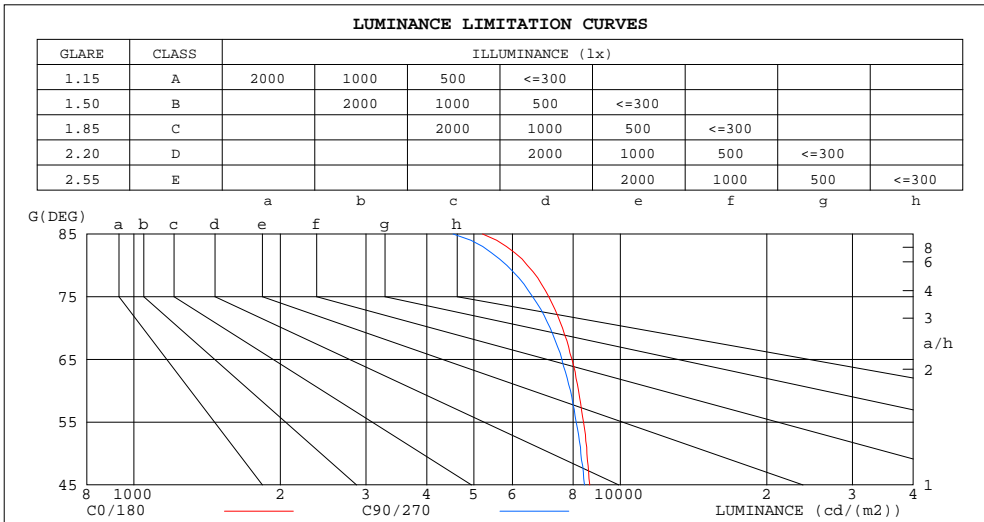
%lum = 77.9%
 %lamp = 77.9%

C Range: 0 - 360DEG
 C Interval: 22.5DEG
 Test Speed: HIGH
 Temperature:25.2DEG
 Operators:Water
 Test Date:2024-08-28

γ Range: 0 - 180DEG
 γ Interval: 1.0DEG
 Test System:EVERFINE GO-R5000_V2 SYSTEM V2.00.446
 Humidity:48%
 Test Distance:2.519m [K=1.0000]
 Remarks:

LUMINANCE LIMITATION CURVES

Test:U:120.02V I:0.2237A P:26.400W PF:0.9833 Freq:60.00Hz Lamp Flux:2373.17x1 lm		
NAME: ASD-MPR-15D28WH 5000K	TYPE: N/A	WEIGHT: N/A
SPEC.: LED Luminaires	DIM.: N/A	SERIAL No.: N/A
MFR.:ASD Lighting Corp	SUR.: N/A	Shielding Angle: N/A



LUMINANCE cd/(m2)		
G (DEG)	C0/180	C90/270
85	5207	4529
80	6440	5845
75	7125	6601
70	7609	7177
65	7953	7584
60	8204	7900
55	8402	8116
50	8533	8296
45	8652	8439

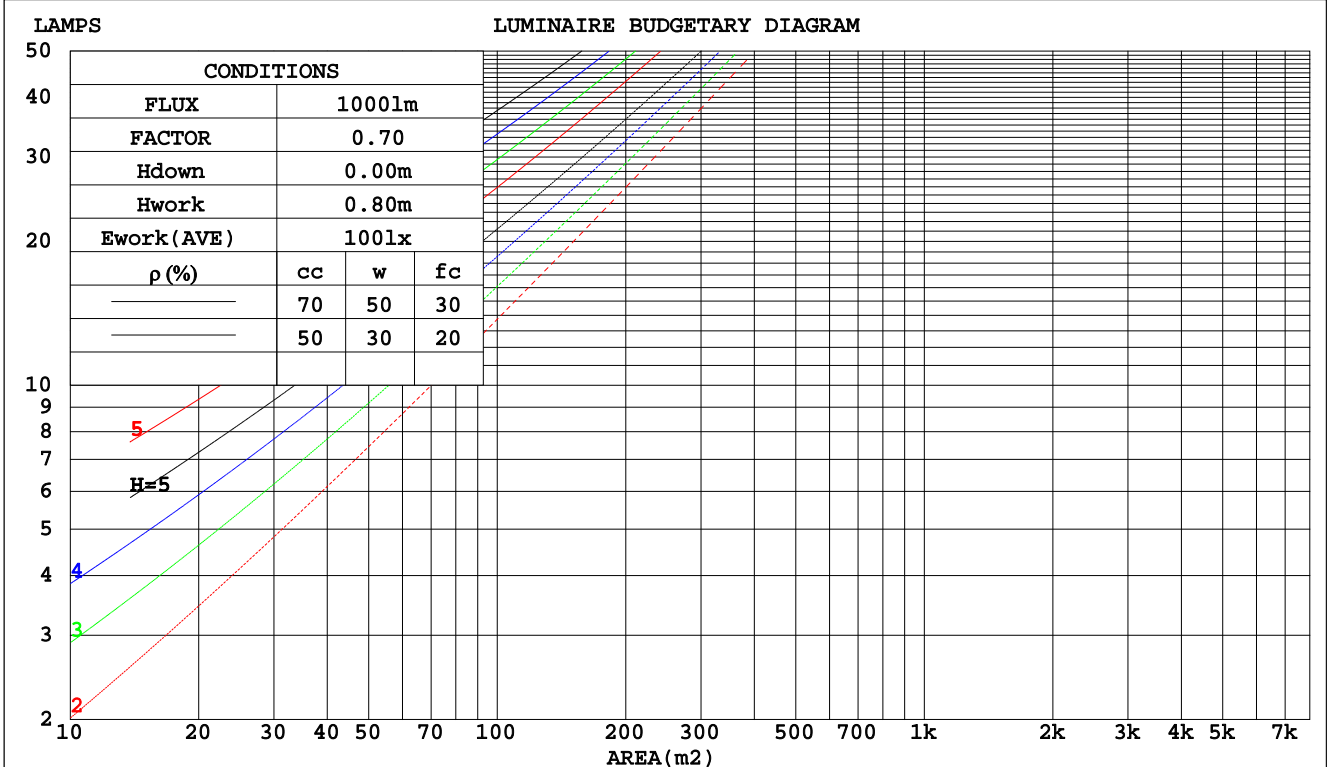
C Range: 0 - 360DEG
 C Interval: 22.5DEG
 Test Speed: HIGH
 Temperature:25.2DEG
 Operators:Water
 Test Date:2024-08-28

γ Range: 0 - 180DEG
 γ Interval: 1.0DEG
 Test System:EVERFINE GO-R5000_V2 SYSTEM V2.00.446
 Humidity:48%
 Test Distance:2.519m [K=1.0000]
 Remarks:

CU AND LUMINAIRE BUDGETARY ESTIMATE DIAGRAM

Test:U:120.02V I:0.2237A P:26.400W PF:0.9833 Freq:60.00Hz Lamp Flux:2373.17x1 lm		
NAME: ASD-MPR-15D28WH 5000K	TYPE: N/A	WEIGHT: N/A
SPEC.:LED Luminaires	DIM.: N/A	SERIAL No.: N/A
MFR.: ASD Lighting Corp	SUR.: N/A	Shielding Angle: N/A

pcc	80%			70%			50%			30%			10%			0
	50%	30%	10%	50%	30%	10%	50%	30%	10%	50%	30%	10%	50%	30%	10%	0
pw																
pfc	20%			20%			20%			20%			20%			0
RCR	RCR:Room Cavity Ratio															
	Coefficients of Utilization(CU)															
0.0	1.19	1.19	1.19	1.16	1.16	1.16	1.11	1.11	1.11	1.06	1.06	1.06	1.02	1.02	1.02	1.00
1.0	1.04	.99	.95	1.01	.97	.94	.97	.94	.91	.93	.90	.88	.90	.87	.85	.83
2.0	.90	.83	.77	.88	.82	.76	.85	.79	.74	.81	.77	.73	.78	.74	.71	.69
3.0	.79	.71	.64	.77	.70	.63	.74	.68	.62	.71	.66	.61	.69	.64	.60	.58
4.0	.70	.61	.54	.68	.60	.54	.66	.59	.53	.64	.57	.52	.61	.56	.51	.49
5.0	.62	.53	.46	.61	.52	.46	.59	.51	.46	.57	.50	.45	.55	.49	.45	.42
6.0	.56	.47	.40	.55	.46	.40	.53	.45	.40	.51	.45	.39	.50	.44	.39	.37
7.0	.51	.42	.36	.50	.41	.35	.48	.41	.35	.47	.40	.35	.45	.39	.35	.33
8.0	.46	.38	.32	.45	.37	.32	.44	.37	.31	.43	.36	.31	.42	.36	.31	.29
9.0	.42	.34	.28	.42	.34	.28	.41	.33	.28	.40	.33	.28	.38	.32	.28	.26
10.0	.39	.31	.26	.39	.31	.26	.38	.30	.26	.37	.30	.25	.36	.30	.25	.24



C Range: 0 - 360DEG
 C Interval: 22.5DEG
 Test Speed: HIGH
 Temperature:25.2DEG
 Operators:Water
 Test Date:2024-08-28

γ Range: 0 - 180DEG
 γ Interval: 1.0DEG
 Test System:EVERFINE GO-R5000_V2 SYSTEM V2.00.446
 Humidity:48%
 Test Distance:2.519m [K=1.0000]
 Remarks:

WEC AND CCEC

Test:U:120.02V I:0.2237A P:26.400W PF:0.9833 Freq:60.00Hz		
Lamp Flux:2373.17x1 lm		
NAME: ASD-MPR-15D28WH 5000K	TYPE: N/A	WEIGHT: N/A
SPEC.: LED Luminaires	DIM.: N/A	SERIAL No.: N/A
MFR.: ASD Lighting Corp	SUR.: N/A	Shielding Angle: N/A

ρcc	80%			70%			50%			30%			10%			0
ρw	50%	30%	10%	50%	30%	10%	50%	30%	10%	50%	30%	10%	50%	30%	10%	0
ρfc	20%			20%			20%			20%			20%			0
RCR	RCR:Room Cavity Ratio						Wall Exitance Coefficients(WEC)									
0.0																
1.0	.315	.179	.057	.308	.176	.056	.295	.169	.054	.283	.163	.052	.271	.157	.051	
2.0	.296	.162	.050	.290	.159	.049	.278	.154	.048	.267	.150	.047	.257	.145	.046	
3.0	.273	.145	.044	.268	.143	.043	.257	.139	.042	.248	.136	.042	.239	.132	.041	
4.0	.252	.131	.038	.247	.129	.038	.238	.126	.038	.229	.123	.037	.221	.120	.037	
5.0	.232	.118	.034	.228	.117	.034	.220	.115	.034	.212	.112	.033	.205	.110	.033	
6.0	.215	.108	.031	.212	.107	.031	.204	.105	.030	.197	.103	.030	.191	.101	.030	
7.0	.200	.099	.028	.197	.098	.028	.190	.096	.028	.184	.094	.027	.179	.093	.027	
8.0	.187	.091	.026	.184	.091	.026	.178	.089	.025	.173	.087	.025	.167	.086	.025	
9.0	.175	.085	.024	.172	.084	.024	.167	.083	.023	.162	.081	.023	.158	.080	.023	
10.0	.165	.079	.022	.162	.078	.022	.157	.077	.022	.153	.076	.022	.149	.075	.021	

ρcc	80%			70%			50%			30%			10%			0
ρw	50%	30%	10%	50%	30%	10%	50%	30%	10%	50%	30%	10%	50%	30%	10%	0
ρfc	20%			20%			20%			20%			20%			0
RCR	RCR:Room Cavity Ratio						Ceiling Cavity Exitance Coefficients(CCEC)									
0.0	.190	.190	.190	.163	.163	.163	.111	.111	.111	.064	.064	.064	.020	.020	.020	
1.0	.181	.156	.134	.155	.134	.115	.106	.092	.080	.061	.053	.046	.019	.017	.015	
2.0	.173	.132	.098	.148	.114	.084	.101	.079	.059	.058	.046	.034	.019	.015	.011	
3.0	.165	.114	.074	.142	.099	.064	.097	.069	.045	.056	.040	.026	.018	.013	.009	
4.0	.157	.101	.058	.135	.087	.050	.093	.061	.035	.054	.036	.021	.017	.012	.007	
5.0	.150	.091	.047	.129	.078	.041	.089	.055	.029	.051	.032	.017	.017	.010	.006	
6.0	.143	.082	.039	.123	.071	.034	.085	.050	.024	.049	.029	.014	.016	.010	.005	
7.0	.136	.075	.033	.117	.065	.029	.081	.046	.020	.047	.027	.012	.015	.009	.004	
8.0	.129	.070	.029	.111	.060	.025	.077	.042	.018	.045	.025	.011	.015	.008	.003	
9.0	.123	.065	.025	.106	.056	.022	.074	.039	.016	.043	.023	.009	.014	.008	.003	
10.0	.118	.060	.022	.101	.052	.019	.070	.037	.014	.041	.022	.008	.013	.007	.003	

C Range: 0 - 360DEG
 C Interval: 22.5DEG
 Test Speed: HIGH
 Temperature:25.2DEG
 Operators:Water
 Test Date:2024-08-28

γ Range: 0 - 180DEG
 γ Interval: 1.0DEG
 Test System:EVERFINE GO-R5000_V2 SYSTEM V2.00.446
 Humidity:48%
 Test Distance:2.519m [K=1.0000]
 Remarks:

UGR(Unified Glare Rating) Table

Test:U:120.02V I:0.2237A P:26.400W PF:0.9833 Freq:60.00Hz		
Lamp Flux:2373.17x1 lm		
NAME: ASD-MPR-15D28WH 5000K	TYPE: N/A	WEIGHT: N/A
SPEC.: LED Luminaires	DIM.: N/A	SERIAL No.: N/A
MFR.: ASD Lighting Corp	SUR.: N/A	Shielding Angle: N/A

ceiling/cavity	0.7	0.7	0.5	0.5	0.3	0.7	0.7	0.5	0.5	0.3
walls	0.5	0.3	0.5	0.3	0.3	0.5	0.3	0.5	0.3	0.3
working plane	0.2	0.2	0.2	0.2	0.2	0.2	0.2	0.2	0.2	0.2
Room dimensions	Viewed crosswise					Viewed endwise				
x = 2H y = 2H	17.3	18.8	17.5	19.0	19.2	17.1	18.7	17.4	18.9	19.1
3H	18.8	20.3	19.1	20.5	20.7	18.6	20.1	18.9	20.3	20.5
4H	19.5	20.8	19.8	21.1	21.3	19.2	20.6	19.5	20.8	21.1
6H	19.9	21.2	20.3	21.5	21.8	19.6	20.9	20.0	21.2	21.5
8H	20.1	21.3	20.4	21.6	21.9	19.8	21.0	20.1	21.3	21.6
12H	20.2	21.3	20.5	21.6	21.9	19.8	21.0	20.2	21.3	21.6
4H 2H	17.9	19.2	18.2	19.5	19.7	17.8	19.1	18.1	19.4	19.6
3H	19.6	20.8	20.0	21.1	21.4	19.5	20.6	19.8	20.9	21.2
4H	20.4	21.5	20.8	21.8	22.1	20.2	21.3	20.5	21.6	21.9
6H	21.0	21.9	21.4	22.3	22.7	20.7	21.7	21.1	22.0	22.4
8H	21.2	22.1	21.6	22.4	22.8	20.9	21.8	21.3	22.2	22.5
12H	21.3	22.1	21.7	22.5	22.9	21.0	21.8	21.4	22.2	22.6
8H 4H	20.6	21.5	21.1	21.9	22.3	20.5	21.4	20.9	21.7	22.1
6H	21.4	22.1	21.8	22.5	23.0	21.1	21.9	21.6	22.3	22.7
8H	21.7	22.3	22.1	22.8	23.2	21.4	22.1	21.9	22.5	22.9
12H	21.9	22.4	22.3	22.9	23.4	21.6	22.1	22.0	22.6	23.1
12H 4H	20.7	21.5	21.1	21.9	22.3	20.5	21.3	20.9	21.7	22.1
6H	21.4	22.1	21.9	22.5	23.0	21.2	21.9	21.7	22.3	22.7
8H	21.8	22.3	22.2	22.8	23.2	21.5	22.1	22.0	22.5	23.0
Variations with the observer position at spacings(CIE Pub.117):										
S = 1.0H	+ 0.1 / - 0.2					+ 0.2 / - 0.2				
1.5H	+ 0.2 / - 0.3					+ 0.2 / - 0.3				
2.0H	+ 0.2 / - 0.3					+ 0.2 / - 0.3				

CIE Pub.117, 2373 lm Total Lamp Luminous Flux Correct (8log(F/F0) = 3.0)
 Area: 0.090746 m2

C Range: 0 - 360DEG
 C Interval: 22.5DEG
 Test Speed: HIGH
 Temperature:25.2DEG
 Operators:Water
 Test Date:2024-08-28

γ Range: 0 - 180DEG
 γ Interval: 1.0DEG
 Test System:EVERFINE GO-R5000_V2 SYSTEM V2.00.446
 Humidity:48%
 Test Distance:2.519m [K=1.0000]
 Remarks:

UTILIZATION FACTORS TABLE

Test:U:120.02V I:0.2237A P:26.400W PF:0.9833 Freq:60.00Hz Lamp Flux:2373.17x1 lm		
NAME: ASD-MPR-15D28WH 5000K	TYPE: N/A	WEIGHT: N/A
SPEC.:LED Luminaires	DIM.: N/A	SERIAL No.: N/A
MFR.:ASD Lighting Corp	SUR.: N/A	Shielding Angle: N/A

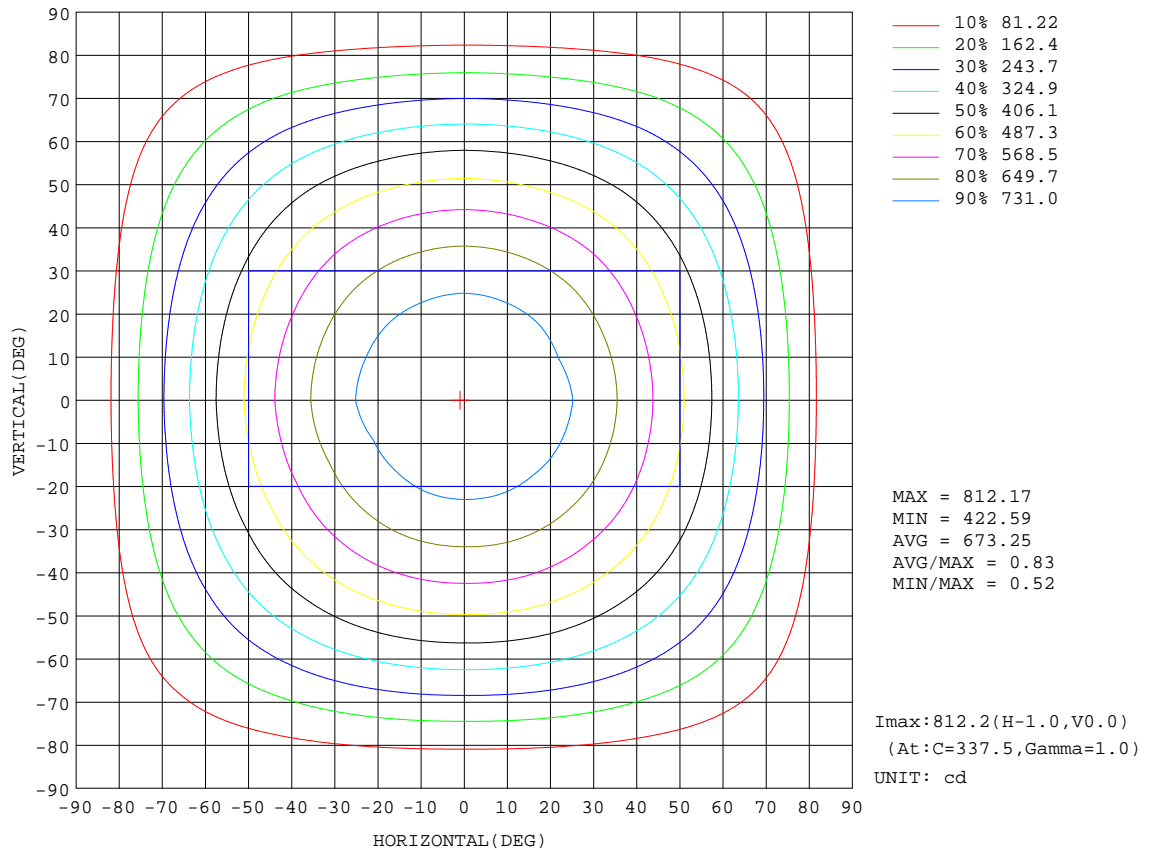
REFLECTANCE										
Ceiling	0.8	0.8	0.8	0.7	0.7	0.7	0.5	0.5	0.5	0
Walls	0.7	0.5	0.3	0.7	0.5	0.3	0.7	0.5	0.3	0
Working plane	0.2	0.2	0.2	0.2	0.2	0.2	0.2	0.2	0.2	0
ROOM INDEX	UTILIZATION FACTORS(PERCENT) $k(RI) \times RCR = 5$									
k = 0.60	57	45	38	56	45	38	55	45	38	31
0.80	67	55	48	66	55	48	64	54	47	40
1.00	75	64	57	74	64	57	72	65	56	49
1.25	83	72	65	81	71	64	78	70	63	56
1.50	88	78	70	86	77	70	83	75	69	61
2.00	95	86	79	93	85	79	89	82	77	69
2.50	99	91	84	96	89	84	93	87	82	73
3.00	102	95	89	100	93	88	96	90	86	77
4.00	106	100	95	104	98	94	99	95	91	82
5.00	108	104	99	106	102	98	101	98	95	86
ROOM INDEX	UF(total)									Direct
According to DIN EN 13032-2 2004			Suspended				SHRNOM = 1.25			

C Range: 0 - 360DEG
 C Interval: 22.5DEG
 Test Speed: HIGH
 Temperature:25.2DEG
 Operators:Water
 Test Date:2024-08-28

γ Range: 0 - 180DEG
 γ Interval: 1.0DEG
 Test System:EVERFINE GO-R5000_V2 SYSTEM V2.00.446
 Humidity:48%
 Test Distance:2.519m [K=1.0000]
 Remarks:

ISOCANDELA DIAGRAM

Test:U:120.02V I:0.2237A P:26.400W PF:0.9833 Freq:60.00Hz Lamp Flux:2373.17x1 lm		
NAME: ASD-MPR-15D28WH 5000K	TYPE: N/A	WEIGHT: N/A
SPEC.:LED Luminaires	DIM.: N/A	SERIAL No.: N/A
MFR.: ASD Lighting Corp	SUR.: N/A	Shielding Angle: N/A



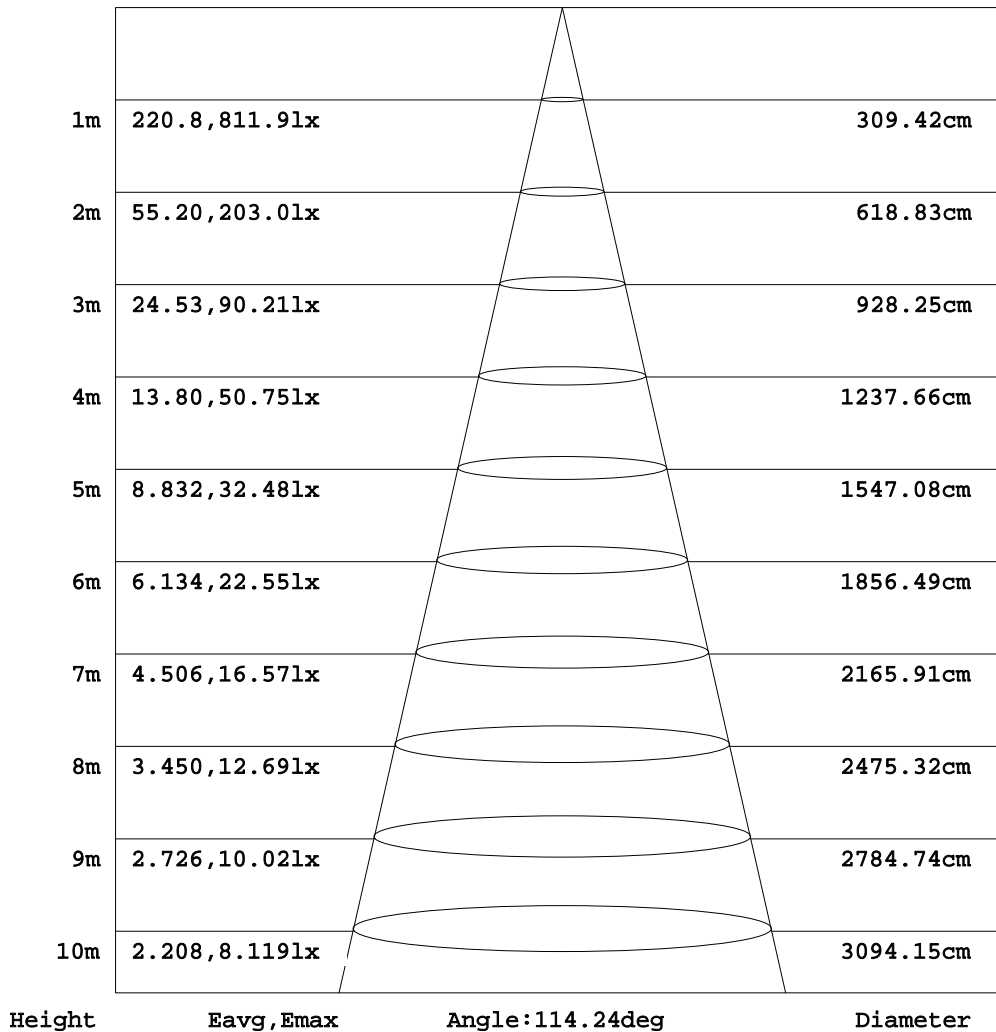
C Range: 0 - 360DEG
 C Interval: 22.5DEG
 Test Speed: HIGH
 Temperature: 25.2DEG
 Operators: Water
 Test Date: 2024-08-28

γ Range: 0 - 180DEG
 γ Interval: 1.0DEG
 Test System: EVERFINE GO-R5000_V2 SYSTEM V2.00.446
 Humidity: 48%
 Test Distance: 2.519m [K=1.0000]
 Remarks:

AAI Figure

Test:U:120.02V I:0.2237A P:26.400W PF:0.9833 Freq:60.00Hz Lamp Flux:2373.17x1 lm		
NAME: ASD-MPR-15D28WH 5000K	TYPE: N/A	WEIGHT: N/A
SPEC.: LED Luminaires	DIM.: N/A	SERIAL No.: N/A
MFR.: ASD Lighting Corp	SUR.: N/A	Shielding Angle: N/A

Flux out:1777 lm



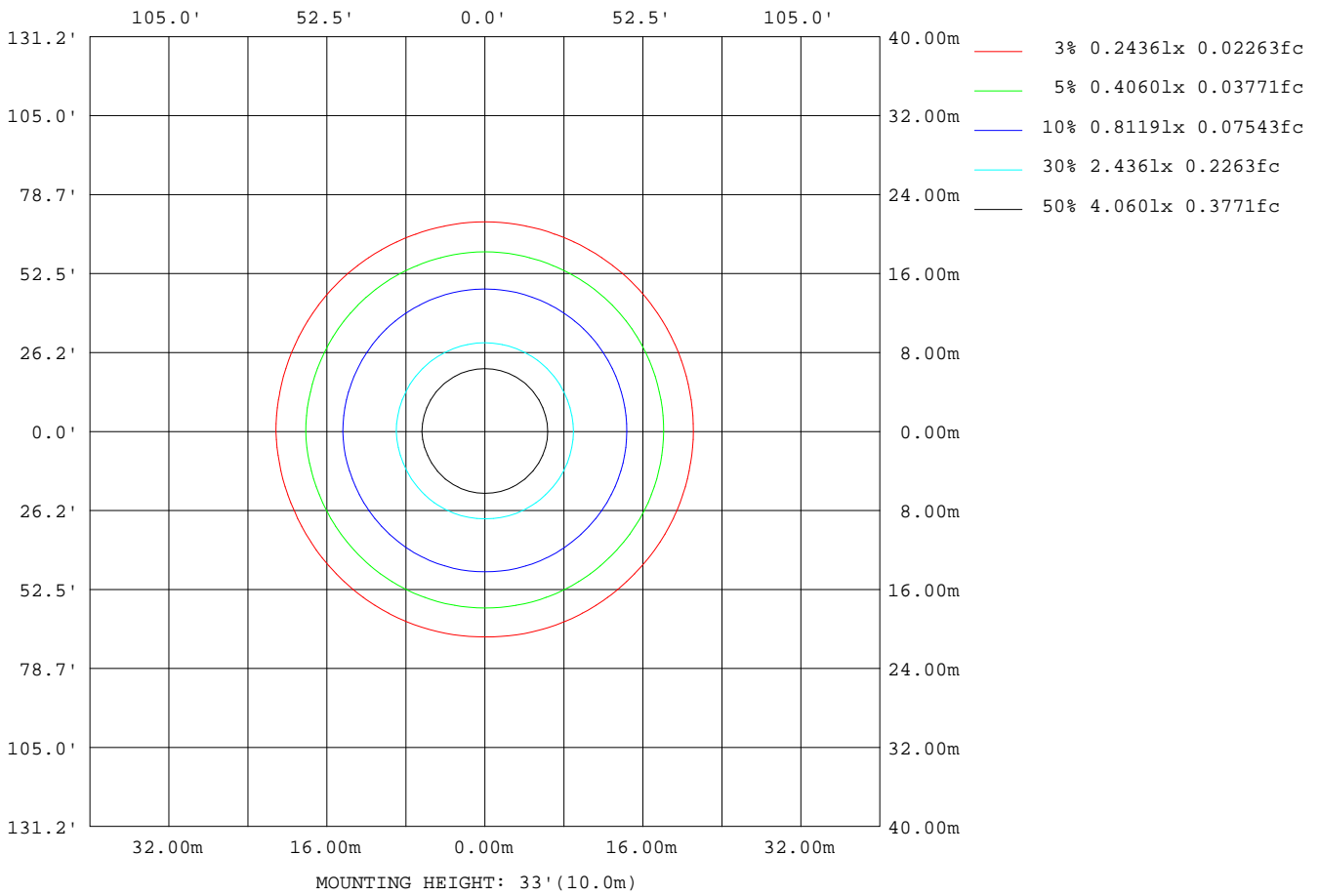
Note: The Curves indicate the illuminated area and the average illumination when the luminaire is at different distance.

C Range: 0 - 360DEG
 C Interval: 22.5DEG
 Test Speed: HIGH
 Temperature: 25.2DEG
 Operators: Water
 Test Date: 2024-08-28

γ Range: 0 - 180DEG
 γ Interval: 1.0DEG
 Test System: EVERFINE GO-R5000_V2 SYSTEM V2.00.446
 Humidity: 48%
 Test Distance: 2.519m [K=1.0000]
 Remarks:

ISOLUX DIAGRAM

Test:U:120.02V I:0.2237A P:26.400W PF:0.9833 Freq:60.00Hz Lamp Flux:2373.17x1 lm		
NAME:ASD-MPR-15D28WH 5000K	TYPE: N/A	WEIGHT: N/A
SPEC.: LED Luminaires	DIM.: N/A	SERIAL No.: N/A
MFR.: ASD Lighting Corp	SUR.: N/A	Shielding Angle: N/A



C Range: 0 - 360DEG
 C Interval: 22.5DEG
 Test Speed: HIGH
 Temperature:25.2DEG
 Operators:Water
 Test Date:2024-08-28

γ Range: 0 - 180DEG
 γ Interval: 1.0DEG
 Test System:EVERFINE GO-R5000_V2 SYSTEM V2.00.446
 Humidity:48%
 Test Distance:2.519m [K=1.0000]
 Remarks:

LED Avg.L Report

Test:U:120.02V I:0.2237A P:26.400W PF:0.9833 Freq:60.00Hz Lamp Flux:2373.17x1 lm		
NAME:ASD-MPR-15D28WH 5000K	TYPE: N/A	WEIGHT: N/A
SPEC.: LED Luminaires	DIM.: N/A	SERIAL No.: N/A
MFR.:ASD Lighting Corp	SUR.: N/A	Shielding Angle: N/A

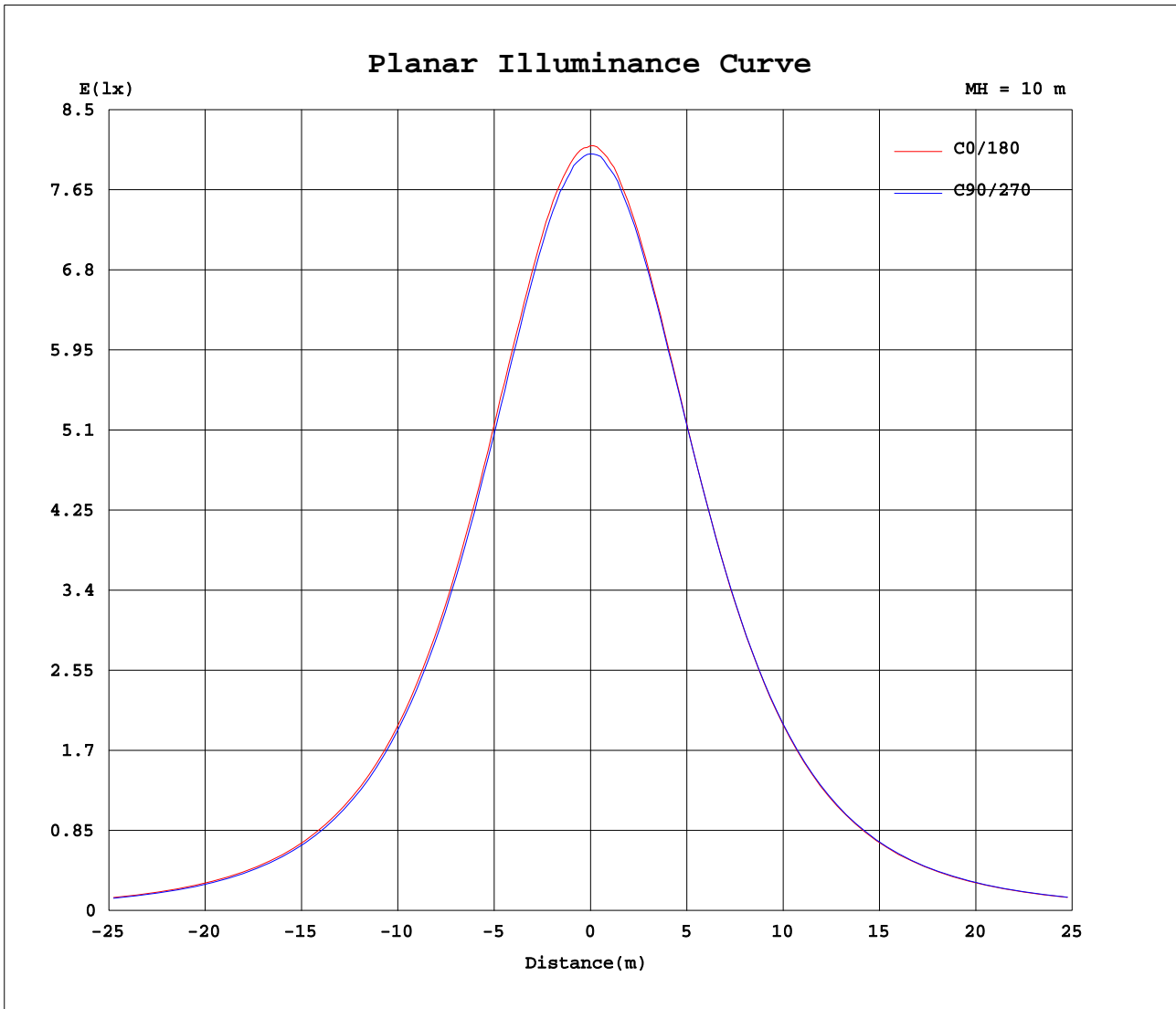
AvgL	cd/m2
L_0~180(65)av	7898
L_0~180(75)av	7126
L_0~180(85)av	5372
L_90~270(65)av	7862
L_90~270(75)av	7022
L_90~270(85)av	5512
L_45(65)av	7886
L_45(75)av	7096
L_45(85)av	5487

Standard: GB/T 29293-2012

C Range: 0 - 360DEG
 C Interval: 22.5DEG
 Test Speed: HIGH
 Temperature:25.2DEG
 Operators:Water
 Test Date:2024-08-28

γ Range: 0 - 180DEG
 γ Interval: 1.0DEG
 Test System:EVERFINE GO-R5000_V2 SYSTEM V2.00.446
 Humidity:48%
 Test Distance:2.519m [K=1.0000]
 Remarks:

Planar Illuminance Curve



C Range: 0 - 360DEG
 C Interval: 22.5DEG
 Test Speed: HIGH
 Temperature: 25.2DEG
 Operators: Water
 Test Date: 2024-08-28

γ Range: 0 - 180DEG
 γ Interval: 1.0DEG
 Test System: EVERFINE GO-R5000_V2 SYSTEM V2.00.446
 Humidity: 48%
 Test Distance: 2.519m [K=1.0000]
 Remarks:

LUMINOUS DISTRIBUTION INTENSITY DATA

Test:U:120.02V I:0.2237A P:26.400W PF:0.9833 Freq:60.00Hz Lamp Flux:2373.17x1 lm		
NAME:ASD-MPR-15D28WH 5000K	TYPE: N/A	WEIGHT: N/A
SPEC.: LED Luminaires	DIM.: N/A	SERIAL No.: N/A
MFR.:ASD Lighting Corp	SUR.: N/A	Shielding Angle: N/A

Table--1

UNIT: cd

C(DEG) γ (DEG)	0	22.5	45	67.5	90	112.5	135	157.5	180	202.5	225	247.5	270	292.5	315	337.5			
0	804	804	804	804	804	804	804	804	804	804	804	804	804	804	804	804			
5	799	801	802	802	800	800	800	802	800	802	804	803	800	801	802	802			
10	790	791	792	790	788	789	789	792	790	791	794	795	791	792	793	795			
15	774	774	776	775	772	772	773	776	775	776	779	779	778	779	780	780			
20	749	751	751	751	747	747	749	751	753	754	757	758	757	757	758	758			
25	725	724	723	722	718	720	720	722	725	727	730	730	730	729	732	730			
30	687	688	686	686	684	684	685	687	690	691	695	696	697	696	697	695			
35	647	647	645	644	641	642	643	646	649	651	655	657	656	655	657	656			
40	602	602	598	599	594	596	595	599	604	605	609	611	612	611	612	610			
45	549	550	546	545	542	542	543	547	552	554	558	560	560	559	560	558			
50	493	493	489	488	484	484	486	489	495	497	502	503	504	503	504	502			
55	433	432	427	427	423	424	424	428	434	436	440	442	444	443	443	442			
60	368	367	363	362	359	359	359	364	371	372	376	377	379	379	379	378			
65	302	300	295	294	291	292	293	297	304	306	309	310	312	311	312	310			
70	234	232	227	226	223	224	225	229	236	237	241	241	243	243	244	242			
75	166	164	160	159	155	158	158	162	169	169	173	173	175	174	176	174			
80	100	99.0	95.6	94.2	92.2	93.6	94.4	97.2	104	105	108	108	110	110	110	108			
85	40.8	40.0	37.9	37.8	35.8	37.4	36.4	38.4	44.2	45.3	48.8	50.1	51.4	51.0	50.5	47.7			
90	0.00	0.00	0.00	0.00	0.00	0.00	0.00	0.00	0.00	0.00	0.00	0.00	0.00	0.00	0.00	0.00			
95	0.00	0.00	0.00	0.00	0.00	0.00	0.00	0.00	0.00	0.00	0.00	0.00	0.00	0.00	0.00	0.00			
100	0.00	0.00	0.00	0.00	0.00	0.00	0.00	0.00	0.00	0.00	0.00	0.00	0.00	0.00	0.00	0.00			
105	0.00	0.00	0.00	0.00	0.00	0.00	0.00	0.00	0.00	0.00	0.00	0.00	0.00	0.00	0.00	0.00			
110	0.00	0.00	0.00	0.00	0.00	0.00	0.00	0.00	0.00	0.00	0.00	0.00	0.00	0.00	0.00	0.00			
115	0.00	0.00	0.00	0.00	0.00	0.00	0.00	0.00	0.00	0.00	0.00	0.00	0.00	0.00	0.00	0.00			
120	0.00	0.00	0.00	0.00	0.00	0.00	0.00	0.00	0.00	0.00	0.00	0.00	0.00	0.00	0.00	0.00			
125	0.00	0.00	0.00	0.00	0.00	0.00	0.00	0.00	0.00	0.00	0.00	0.00	0.00	0.00	0.00	0.00			
130	0.00	0.00	0.00	0.00	0.00	0.00	0.00	0.00	0.00	0.00	0.00	0.00	0.00	0.00	0.00	0.00			
135	0.00	0.00	0.00	0.00	0.00	0.00	0.00	0.00	0.00	0.00	0.00	0.00	0.00	0.00	0.00	0.00			
140	0.00	0.00	0.00	0.00	0.00	0.00	0.00	0.00	0.00	0.00	0.00	0.00	0.00	0.00	0.00	0.00			
145	0.00	0.00	0.00	0.00	0.00	0.00	0.00	0.00	0.00	0.00	0.00	0.00	0.00	0.00	0.00	0.00			
150	0.00	0.00	0.00	0.00	0.00	0.00	0.00	0.00	0.00	0.00	0.00	0.00	0.00	0.00	0.00	0.00			
155	0.00	0.00	0.00	0.00	0.00	0.00	0.00	0.00	0.00	0.00	0.00	0.00	0.00	0.00	0.00	0.00			
160	0.00	0.00	0.00	0.00	0.00	0.00	0.00	0.00	0.00	0.00	0.00	0.00	0.00	0.00	0.00	0.00			
165	0.00	0.00	0.00	0.00	0.00	0.00	0.00	0.00	0.00	0.00	0.00	0.00	0.00	0.00	0.00	0.00			
170	0.00	0.00	0.00	0.00	0.00	0.00	0.00	0.00	0.00	0.00	0.00	0.00	0.00	0.00	0.00	0.00			
175	0.00	0.00	0.00	0.00	0.00	0.00	0.00	0.00	0.00	0.00	0.00	0.00	0.00	0.00	0.00	0.00			
180	0.00	0.00	0.00	0.00	0.00	0.00	0.00	0.00	0.00	0.00	0.00	0.00	0.00	0.00	0.00	0.00			

C Range: 0 - 360DEG
 C Interval: 22.5DEG
 Test Speed: HIGH
 Temperature:25.2DEG
 Operators:Water
 Test Date:2024-08-28

γ Range: 0 - 180DEG
 γ Interval: 1.0DEG
 Test System:EVERFINE GO-R5000_V2 SYSTEM V2.00.446
 Humidity:48%
 Test Distance:2.519m [K=1.0000]
 Remarks: