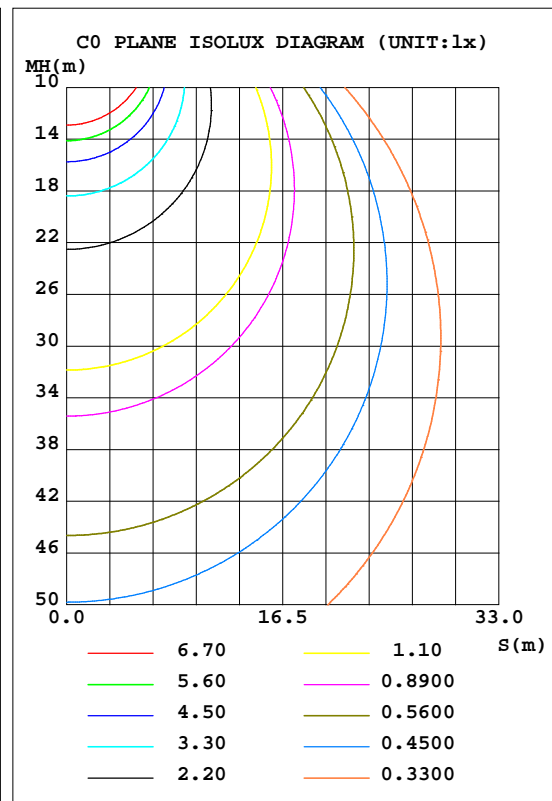
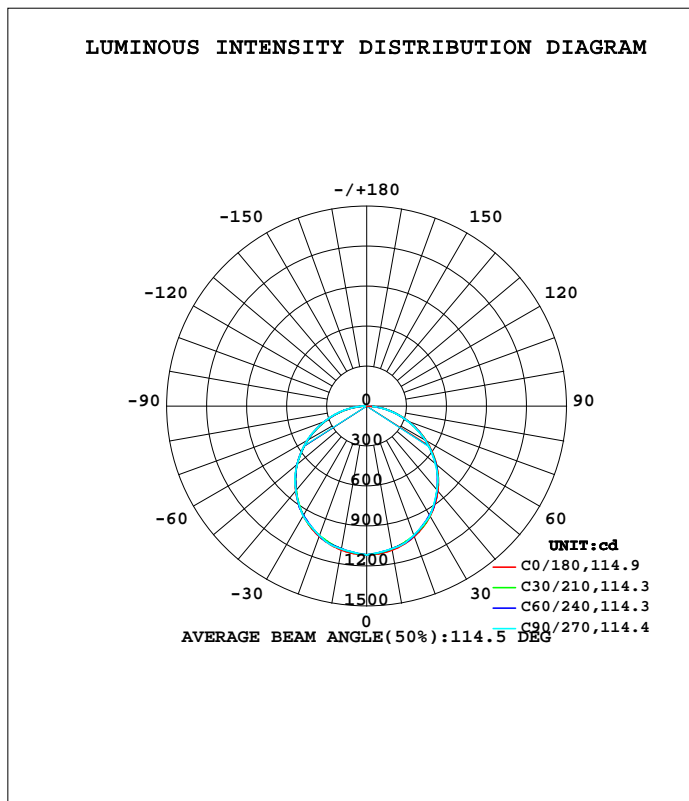


LUMINAIRE PHOTOMETRIC TEST REPORT

Test:U:120.2V I:0.2109A P:25.73W PF:0.9860 Lamp Flux:3279.59x1 lm		
NAME: ASD Lighting corp	TYPE:LED PANEL	WEIGHT:
SPEC.: ASD-ELP05-22D27CC-PRM(4000K)	DIM.: 603x603mm	SERIAL No.:BLD20171213N03
MFR.: ASD Lighting corp	SUR.:0.558*0.558	Shielding Angle:

DATA OF LAMP		PHOTOMETRIC DATA Eff: 127.46 lm/W			
MODEL		I _{max} (cd)	1116	S/MH(C0/180)	1.27
NOMINAL POWER(W)	27	LOR(%)	100.0	S/MH(C90/270)	1.27
RATED VOLTAGE(V)		TOTAL FLUX(lm)	3279.6	η UP, DN(C0-180)	0.0,49.7
NOMINAL FLUX(lm)	3279.59	CIE CLASS	DIRECT	η UP, DN(C180-360)	0.0,50.3
LAMPS INSIDE	1	η up(%)	0.0	CIBSE SHR NOM	1.25
TEST VOLTAGE(V)		η down(%)	100.0	CIBSE SHR MAX	1.35



C Range: 0 - 360DEG
 C Interval: 5.0DEG
 Test Speed: HIGH
 Temperature:22DEG
 Operators:HUA
 Test Date:2017-12-13

γ Range: 0 - 180DEG
 γ Interval: 0.5DEG
 Test System:EVERFINE GO-2000B_V1 SYSTEM V2.0.350
 Humidity:43%
 Test Distance:12.218m [K=1.0000]
 Remarks:

ZONAL FLUX DIAGRAM

ZONAL FLUX DIAGRAM:

γ	C0	C45	C90	C135	C180	C225	C270	C315	γ	Φ zone	Φ total	%lum,lamp
5	1112	1104	1102	1103	1111	1104	1102	1104	0- 5	26.51	26.51	0.81,0.81
10	1098	1087	1087	1086	1097	1087	1089	1088	5- 10	78.44	105.0	3.2,3.2
15	1075	1065	1070	1064	1073	1066	1073	1067	10- 15	127.9	232.9	7.1,7.1
20	1043	1039	1032	1037	1041	1040	1035	1041	15- 20	173.4	406.3	12.4,12.4
25	1002	994.5	990.9	992.5	1001	995.4	994.8	997.1	20- 25	212.8	619.1	18.9,18.9
30	953.2	942.6	949.9	940.5	951.2	944.0	954.6	945.6	25- 30	245.6	864.7	26.4,26.4
35	896.0	887.9	885.2	885.8	894.2	890.0	891.1	891.5	30- 35	270.5	1135	34.6,34.6
40	831.8	828.5	820.4	826.4	830.0	831.2	827.6	832.5	35- 40	286.1	1421	43.3,43.3
45	760.8	752.2	753.8	749.8	758.9	755.2	762.3	756.9	40- 45	292.6	1714	52.3,52.3
50	683.4	675.5	672.5	672.6	681.7	678.7	681.9	680.9	45- 50	289.8	2004	61.1,61.1
55	601.2	597.1	589.4	593.8	599.6	600.6	599.8	603.2	50- 55	277.0	2281	69.5,69.5
60	513.9	507.2	506.3	504.2	511.9	511.5	517.6	514.1	55- 60	255.6	2536	77.3,77.3
65	423.2	417.8	415.1	415.4	421.8	423.3	427.4	425.5	60- 65	226.3	2763	84.2,84.2
70	331.1	327.7	324.0	325.6	330.0	334.3	337.3	336.4	65- 70	190.0	2953	90,90
75	239.4	236.6	233.7	234.3	238.6	243.9	247.9	246.1	70- 75	148.9	3102	94.6,94.6
80	150.8	147.1	145.0	145.3	150.6	155.7	160.2	156.9	75- 80	104.3	3206	97.7,97.7
85	51.48	62.99	58.53	61.26	49.12	71.20	75.35	71.68	80- 85	58.21	3264	99.5,99.5
90	0.7743	2.944	4.110	2.039	1.374	6.341	12.64	6.378	85- 90	15.02	3279	100,100
95	0	0	0	0	0	0	0	0	90- 95	0.5599	3280	100,100
100	0	0	0	0	0	0	0	0	95-100	0	3280	100,100
105	0	0	0	0	0	0	0	0	100-105	0	3280	100,100
110	0	0	0	0	0	0	0	0	105-110	0	3280	100,100
115	0	0	0	0	0	0	0	0	110-115	0	3280	100,100
120	0	0	0	0	0	0	0	0	115-120	0	3280	100,100
125	0	0	0	0	0	0	0	0	120-125	0	3280	100,100
130	0	0	0	0	0	0	0	0	125-130	0	3280	100,100
135	0	0	0	0	0	0	0	0	130-135	0	3280	100,100
140	0	0	0	0	0	0	0	0	135-140	0	3280	100,100
145	0	0	0	0	0	0	0	0	140-145	0	3280	100,100
150	0	0	0	0	0	0	0	0	145-150	0	3280	100,100
155	0	0	0	0	0	0	0	0	150-155	0	3280	100,100
160	0	0	0	0	0	0	0	0	155-160	0	3280	100,100
165	0	0	0	0	0	0	0	0	160-165	0	3280	100,100
170	0	0	0	0	0	0	0	0	165-170	0	3280	100,100
175	0	0	0	0	0	0	0	0	170-175	0	3280	100,100
180	0	0	0	0	0	0	0	0	175-180	0	3280	100,100
DEG	LUMINOUS INTENSITY:cd									UNIT:lm		

Conical surface Flux(90deg): 1713.9 lm

%lum = 52.3%
%lamp = 52.3%

Conical surface Flux(120deg): 2536.3 lm

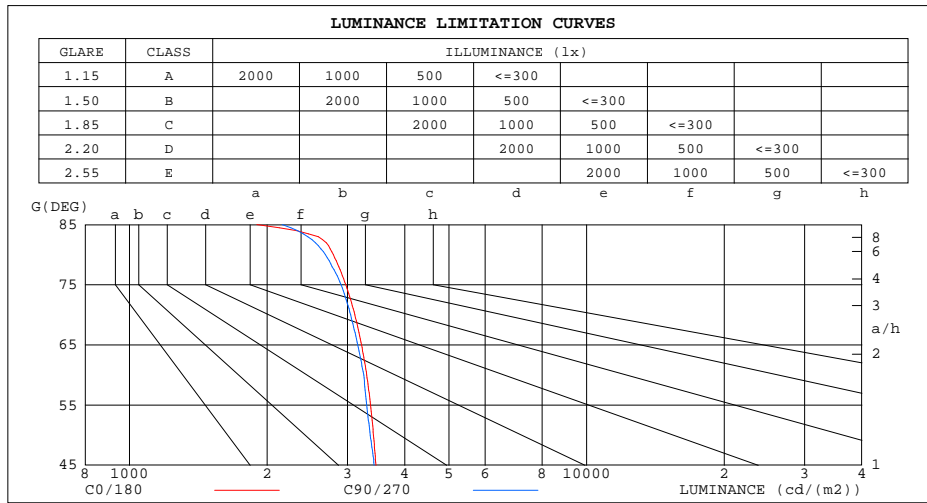
%lum = 77.3%
%lamp = 77.3%

C Range: 0 - 360DEG
C Interval: 5.0DEG
Test Speed: HIGH
Temperature:22DEG
Operators:HUA
Test Date:2017-12-13

γ Range: 0 - 180DEG
γ Interval: 0.5DEG
Test System:EVERFINE GO-2000B_V1 SYSTEM V2.0.350
Humidity:43%
Test Distance:12.218m [K=1.0000]
Remarks:

LUMINANCE LIMITATION CURVES

Test:U:120.2V I:0.2109A P:25.73W PF:0.9860 Lamp Flux:3279.59x1 lm		
NAME: ASD Lighting corp	TYPE:LED PANEL	WEIGHT:
SPEC.: ASD-ELP05-22D27CC-PRM(4000K)	DIM.: 603x603mm	SERIAL No.:BLD20171213N03
MFR.: ASD Lighting corp	SUR.:0.558*0.558	Shielding Angle:



LUMINANCE cd/(m2)		
G(DEG)	C0/180	C90/270
85	1899	2159
80	2793	2684
75	2974	2904
70	3113	3046
65	3220	3158
60	3305	3256
55	3370	3304
50	3419	3364
45	3460	3428

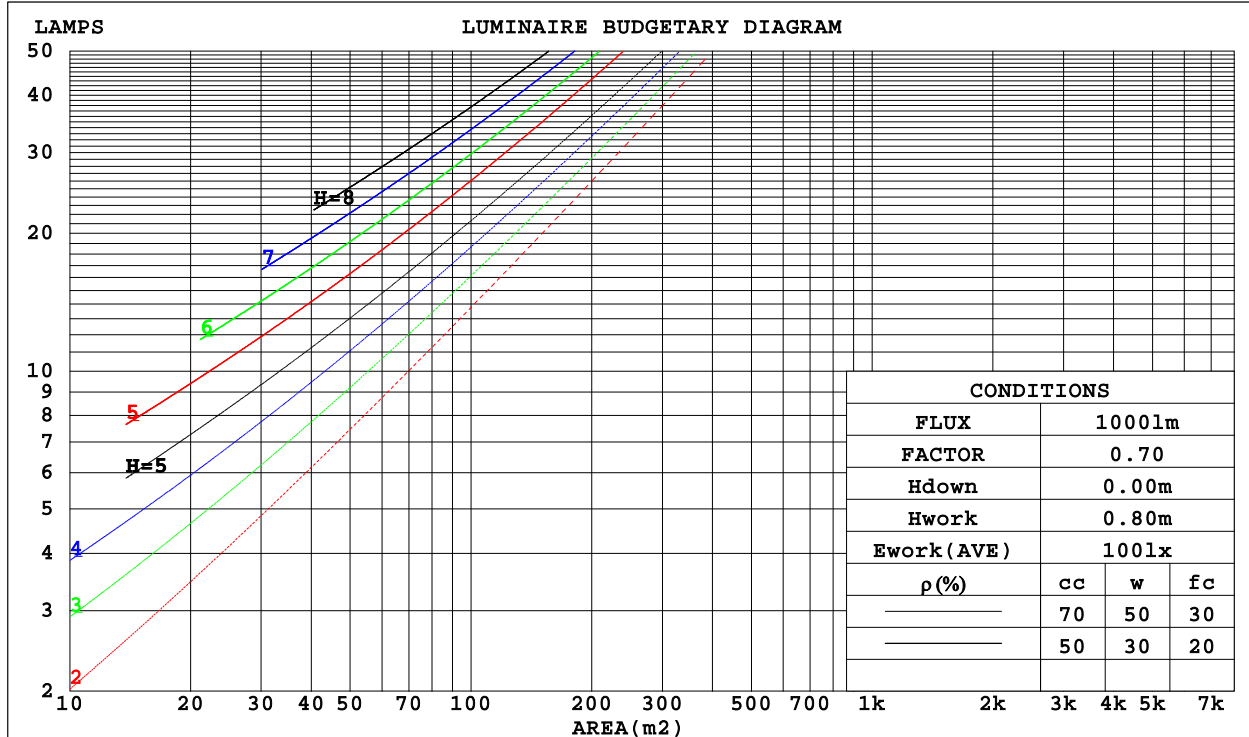
C Range: 0 - 360DEG
 C Interval: 5.0DEG
 Test Speed: HIGH
 Temperature:22DEG
 Operators:HUA
 Test Date:2017-12-13

γ Range: 0 - 180DEG
 γ Interval: 0.5DEG
 Test System:EVERFINE GO-2000B_V1 SYSTEM V2.0.350
 Humidity:43%
 Test Distance:12.218m [K=1.0000]
 Remarks:

CU AND LUMINAIRE BUDGETARY ESTIMATE DIAGRAM

Test:U:120.2V I:0.2109A P:25.73W PF:0.9860 Lamp Flux:3279.59x1 lm		
NAME: ASD Lighting corp	TYPE:LED PANEL	WEIGHT:
SPEC.: ASD-ELP05-22D27CC-PRM(4000K)	DIM.: 603x603mm	SERIAL No.:BLD20171213N03
MFR.: ASD Lighting corp	SUR.:0.558*0.558	Shielding Angle:

ρ_{cc}	80%			70%			50%			30%			10%			0
ρ_w	50%	30%	10%	50%	30%	10%	50%	30%	10%	50%	30%	10%	50%	30%	10%	0
ρ_{fc}	20%			20%			20%			20%			20%			0
RCR	RCR:Room Cavity Ratio						Coefficients of Utilization(CU)									
0.0	1.19	1.19	1.19	1.16	1.16	1.16	1.11	1.11	1.11	1.06	1.06	1.06	1.02	1.02	1.02	.00
1.0	1.03	.99	.95	1.01	.97	.93	.97	.94	.90	.93	.90	.88	.89	.87	.85	.83
2.0	.90	.83	.77	.88	.81	.76	.84	.79	.74	.81	.76	.72	.78	.74	.71	.69
3.0	.79	.70	.64	.77	.69	.63	.74	.67	.62	.71	.66	.61	.69	.64	.60	.57
4.0	.70	.61	.54	.68	.60	.53	.66	.58	.53	.63	.57	.52	.61	.56	.51	.49
5.0	.62	.53	.46	.61	.52	.46	.59	.51	.45	.57	.50	.45	.55	.49	.44	.42
6.0	.56	.47	.40	.55	.46	.40	.53	.45	.40	.51	.44	.39	.50	.44	.39	.37
7.0	.50	.42	.35	.50	.41	.35	.48	.40	.35	.47	.40	.35	.45	.39	.34	.32
8.0	.46	.37	.31	.45	.37	.31	.44	.37	.31	.43	.36	.31	.42	.35	.31	.29
9.0	.42	.34	.28	.42	.34	.28	.40	.33	.28	.39	.33	.28	.38	.32	.28	.26
10.0	.39	.31	.26	.38	.31	.26	.37	.30	.25	.36	.30	.25	.36	.30	.25	.23



C Range: 0 - 360DEG
 C Interval: 5.0DEG
 Test Speed: HIGH
 Temperature:22DEG
 Operators:HUA
 Test Date:2017-12-13

γ Range: 0 - 180DEG
 γ Interval: 0.5DEG
 Test System:EVERFINE GO-2000B_V1 SYSTEM V2.0.350
 Humidity:43%
 Test Distance:12.218m [K=1.0000]
 Remarks:

WEC AND CCEC

Test:U:120.2V I:0.2109A P:25.73W PF:0.9860 Lamp Flux:3279.59x1 lm		
NAME: ASD Lighting corp	TYPE:LED PANEL	WEIGHT:
SPEC.: ASD-ELP05-22D27CC-PRM(4000K)	DIM.: 603x603mm	SERIAL No.:BLD20171213N03
MFR.: ASD Lighting corp	SUR.:0.558*0.558	Shielding Angle:

ρcc	80%			70%			50%			30%			10%			0
ρw	50%	30%	10%	50%	30%	10%	50%	30%	10%	50%	30%	10%	50%	30%	10%	0
ρfc	20%			20%			20%			20%			20%			0
RCR	RCR:Room Cavity Ratio						Wall Exitance Coefficients(WEC)									
0.0																
1.0	.318	.181	.057	.311	.178	.056	.298	.171	.055	.286	.165	.053	.274	.159	.051	
2.0	.298	.163	.050	.292	.161	.049	.280	.156	.048	.269	.151	.047	.259	.146	.046	
3.0	.275	.146	.044	.269	.144	.043	.259	.140	.043	.249	.136	.042	.240	.133	.041	
4.0	.253	.131	.039	.248	.130	.038	.239	.127	.038	.230	.124	.037	.222	.121	.037	
5.0	.233	.119	.034	.229	.118	.034	.221	.115	.034	.213	.112	.033	.206	.110	.033	
6.0	.216	.108	.031	.212	.107	.031	.205	.105	.031	.198	.103	.030	.192	.101	.030	
7.0	.201	.099	.028	.197	.098	.028	.191	.096	.028	.185	.095	.028	.179	.093	.027	
8.0	.187	.092	.026	.184	.091	.026	.178	.089	.025	.173	.088	.025	.168	.086	.025	
9.0	.175	.085	.024	.173	.084	.024	.167	.083	.023	.162	.081	.023	.158	.080	.023	
10.0	.165	.079	.022	.162	.078	.022	.158	.077	.022	.153	.076	.022	.149	.075	.021	

ρcc	80%			70%			50%			30%			10%			0
ρw	50%	30%	10%	50%	30%	10%	50%	30%	10%	50%	30%	10%	50%	30%	10%	0
ρfc	20%			20%			20%			20%			20%			0
RCR	RCR:Room Cavity Ratio						Ceiling Cavity Exitance Coefficients(CCEC)									
0.0	.191	.191	.191	.163	.163	.163	.111	.111	.111	.064	.064	.064	.020	.020	.020	
1.0	.181	.156	.134	.155	.134	.115	.106	.092	.080	.061	.053	.046	.020	.017	.015	
2.0	.173	.132	.097	.148	.114	.084	.102	.079	.059	.059	.046	.034	.019	.015	.011	
3.0	.166	.114	.074	.142	.099	.064	.097	.069	.045	.056	.040	.026	.018	.013	.009	
4.0	.158	.101	.058	.135	.087	.050	.093	.061	.035	.054	.036	.021	.017	.012	.007	
5.0	.150	.091	.047	.129	.079	.041	.089	.055	.029	.052	.032	.017	.017	.011	.006	
6.0	.143	.082	.039	.123	.071	.034	.085	.050	.024	.049	.029	.014	.016	.010	.005	
7.0	.136	.076	.033	.117	.066	.029	.081	.046	.020	.047	.027	.012	.015	.009	.004	
8.0	.130	.070	.029	.112	.061	.025	.077	.043	.018	.045	.025	.011	.015	.008	.003	
9.0	.124	.065	.025	.106	.056	.022	.074	.040	.016	.043	.023	.009	.014	.008	.003	
10.0	.118	.061	.022	.102	.053	.020	.070	.037	.014	.041	.022	.008	.013	.007	.003	

C Range: 0 - 360DEG
 C Interval: 5.0DEG
 Test Speed: HIGH
 Temperature:22DEG
 Operators:HUA
 Test Date:2017-12-13

γ Range: 0 - 180DEG
 γ Interval: 0.5DEG
 Test System:EVERFINE GO-2000B_V1 SYSTEM V2.0.350
 Humidity:43%
 Test Distance:12.218m [K=1.0000]
 Remarks:

UGR(Unified Glare Rating) Table

Test:U:120.2V I:0.2109A P:25.73W PF:0.9860 Lamp Flux:3279.59x1 lm										
NAME: ASD Lighting corp					TYPE:LED PANEL			WEIGHT:		
SPEC.: ASD-ELP05-22D27CC-PRM(4000K)					DIM.: 603x603mm			SERIAL No.:BLD20171213N03		
MFR.: ASD Lighting corp					SUR.:0.558*0.558			Shielding Angle:		
ceiling/cavity	0.7	0.7	0.5	0.5	0.3	0.7	0.7	0.5	0.5	0.3
walls	0.5	0.3	0.5	0.3	0.3	0.5	0.3	0.5	0.3	0.3
working plane	0.2	0.2	0.2	0.2	0.2	0.2	0.2	0.2	0.2	0.2
Room dimensions	Viewed crosswise					Viewed endwise				
x = 2H y = 2H	17.1	18.6	17.4	18.8	19.0	17.0	18.6	17.3	18.8	19.0
3H	18.7	20.1	19.0	20.4	20.6	18.6	20.1	18.9	20.3	20.5
4H	19.4	20.7	19.7	21.0	21.3	19.3	20.7	19.6	20.9	21.2
6H	19.9	21.1	20.2	21.4	21.7	19.8	21.1	20.1	21.4	21.6
8H	20.0	21.2	20.3	21.5	21.8	20.0	21.2	20.3	21.5	21.8
12H	20.0	21.2	20.4	21.5	21.8	20.0	21.2	20.4	21.5	21.8
4H 2H	17.7	19.1	18.0	19.3	19.6	17.7	19.0	18.0	19.3	19.6
3H	19.5	20.7	19.9	21.0	21.3	19.5	20.7	19.8	21.0	21.3
4H	20.3	21.4	20.7	21.7	22.1	20.3	21.4	20.6	21.7	22.0
6H	21.0	21.9	21.4	22.3	22.6	20.9	21.9	21.3	22.2	22.6
8H	21.1	22.0	21.6	22.4	22.8	21.1	22.0	21.5	22.4	22.8
12H	21.2	22.1	21.7	22.4	22.9	21.2	22.1	21.7	22.5	22.9
8H 4H	20.6	21.5	21.0	21.9	22.3	20.6	21.5	21.0	21.8	22.2
6H	21.4	22.2	21.9	22.6	23.0	21.4	22.1	21.8	22.5	22.9
8H	21.7	22.4	22.2	22.8	23.3	21.7	22.3	22.1	22.8	23.2
12H	21.9	22.5	22.4	22.9	23.4	21.9	22.5	22.4	22.9	23.4
12H 4H	20.6	21.5	21.1	21.9	22.3	20.6	21.4	21.0	21.8	22.2
6H	21.5	22.2	22.0	22.6	23.0	21.4	22.1	21.9	22.5	23.0
8H	21.8	22.4	22.3	22.8	23.3	21.8	22.4	22.3	22.8	23.3
Variations with the observer position at spacings:										
S = 1.0H	+ 0.1 / - 0.2					+ 0.1 / - 0.2				
1.5H	+ 0.2 / - 0.3					+ 0.2 / - 0.3				
2.0H	+ 0.2 / - 0.2					+ 0.1 / - 0.3				

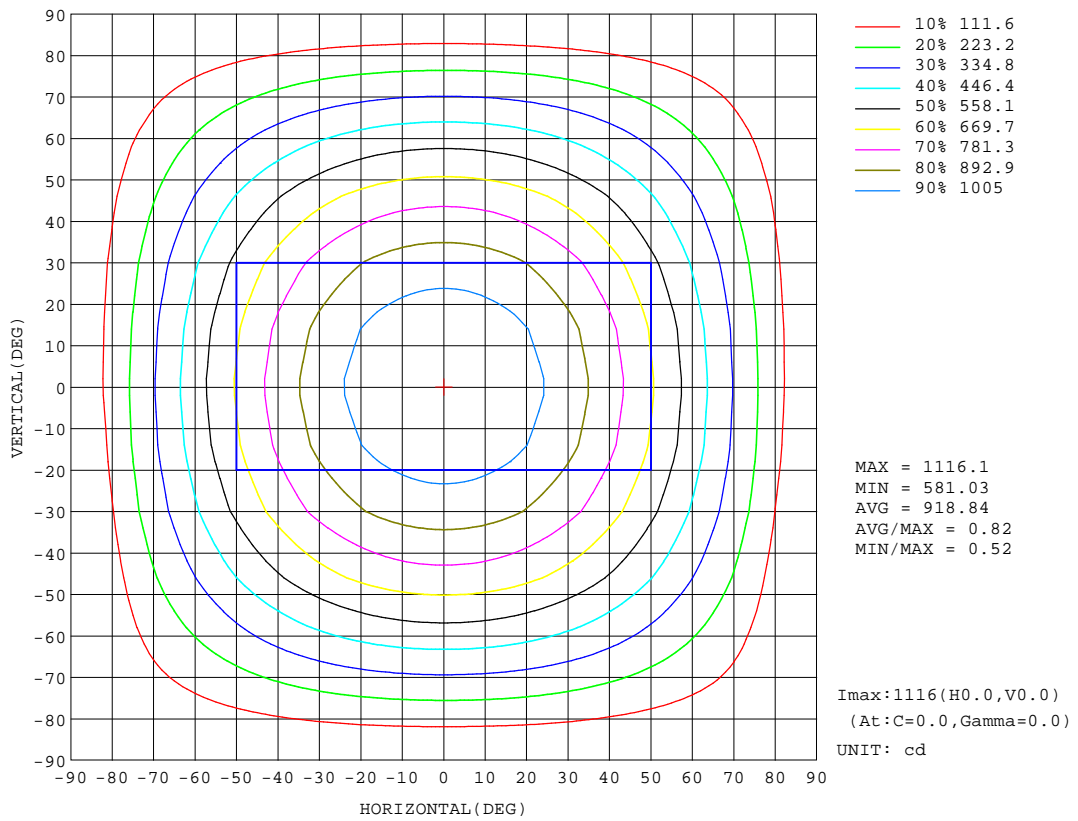
CIE Pub.117 Corrected 3280 lm Total Lamp Luminous Flux.(8log(F/F0) = 4.1)

C Range: 0 - 360DEG
 C Interval: 5.0DEG
 Test Speed: HIGH
 Temperature:22DEG
 Operators:HUA
 Test Date:2017-12-13

γ Range: 0 - 180DEG
 γ Interval: 0.5DEG
 Test System:EVERFINE GO-2000B_V1 SYSTEM V2.0.350
 Humidity:43%
 Test Distance:12.218m [K=1.0000]
 Remarks:

ISOCANDELA DIAGRAM

Test:U:120.2V I:0.2109A P:25.73W PF:0.9860 Lamp Flux:3279.59x1 lm		
NAME: ASD Lighting corp	TYPE:LED PANEL	WEIGHT:
SPEC.: ASD-ELP05-22D27CC-PRM(4000K)	DIM.: 603x603mm	SERIAL No.:BLD20171213N03
MFR.: ASD Lighting corp	SUR.:0.558*0.558	Shielding Angle:



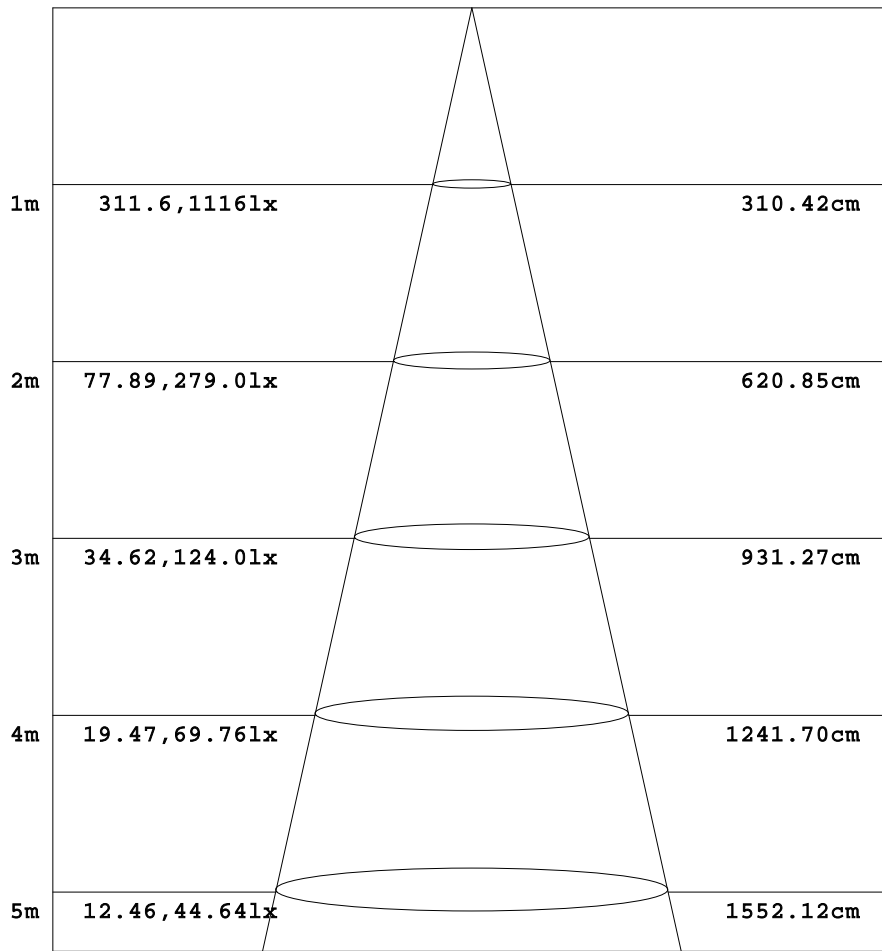
C Range: 0 - 360DEG
 C Interval: 5.0DEG
 Test Speed: HIGH
 Temperature:22DEG
 Operators:HUA
 Test Date:2017-12-13

γ Range: 0 - 180DEG
 γ Interval: 0.5DEG
 Test System:EVERFINE GO-2000B_V1 SYSTEM V2.0.350
 Humidity:43%
 Test Distance:12.218m [K=1.0000]
 Remarks:

AAI Figure

Test:U:120.2V I:0.2109A P:25.73W PF:0.9860 Lamp Flux:3279.59x1 lm		
NAME: ASD Lighting corp	TYPE:LED PANEL	WEIGHT:
SPEC.: ASD-ELP05-22D27CC-PRM(4000K)	DIM.: 603x603mm	SERIAL No.:BLD20171213N03
MFR.: ASD Lighting corp	SUR.:0.558*0.558	Shielding Angle:

Flux out:2412 lm



Height Eavg, Emax Angle: 114.41deg Diameter

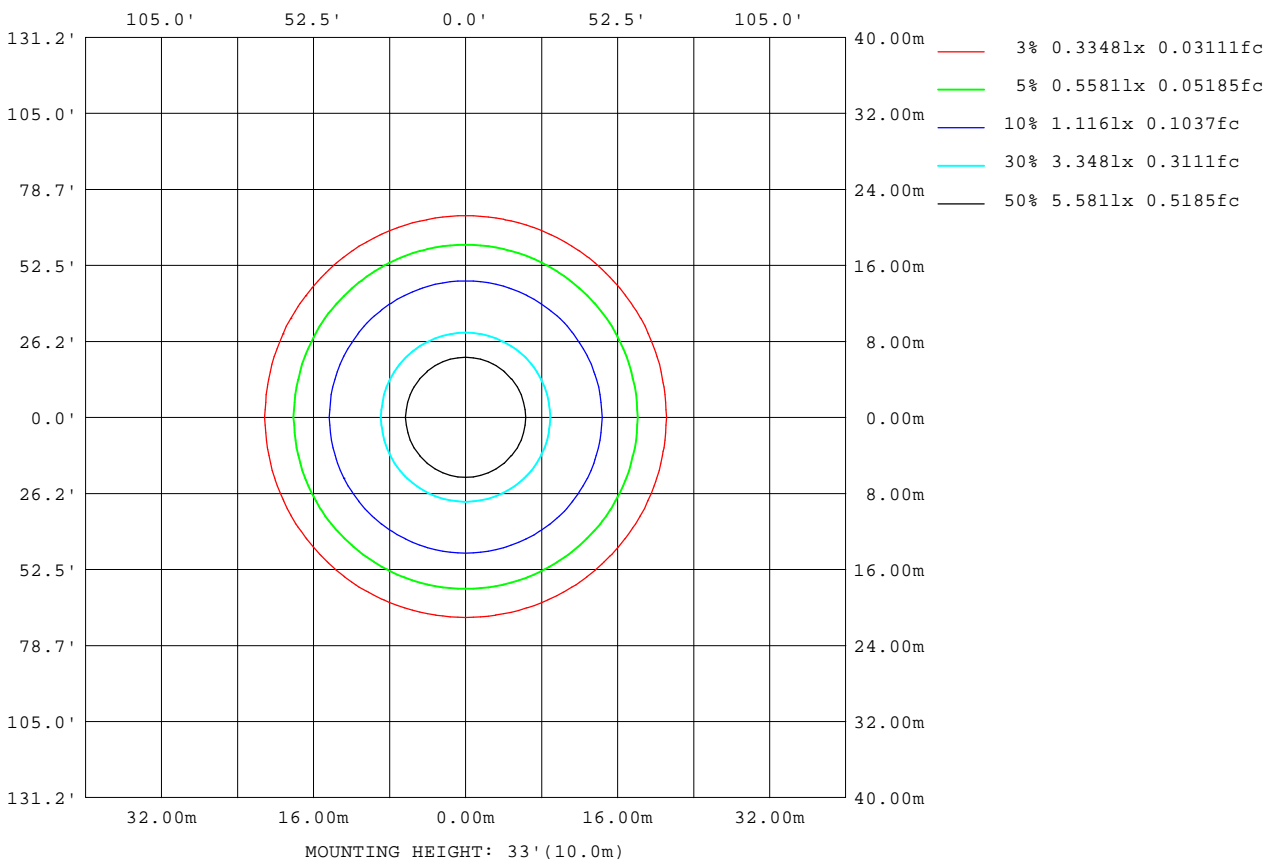
Note: The Curves indicate the illuminated area and the average illumination when the luminaire is at different distance.

C Range: 0 - 360DEG
 C Interval: 5.0DEG
 Test Speed: HIGH
 Temperature: 22DEG
 Operators: HUA
 Test Date: 2017-12-13

γ Range: 0 - 180DEG
 γ Interval: 0.5DEG
 Test System: EVERFINE GO-2000B_V1 SYSTEM V2.0.350
 Humidity: 43%
 Test Distance: 12.218m [K=1.0000]
 Remarks:

ISOLUX DIAGRAM

Test:U:120.2V I:0.2109A P:25.73W PF:0.9860 Lamp Flux:3279.59x1 lm		
NAME: ASD Lighting corp	TYPE:LED PANEL	WEIGHT:
SPEC.: ASD-ELP05-22D27CC-PRM(4000K)	DIM.: 603x603mm	SERIAL No.:BLD20171213N03
MFR.: ASD Lighting corp	SUR.:0.558*0.558	Shielding Angle:



C Range: 0 - 360DEG
 C Interval: 5.0DEG
 Test Speed: HIGH
 Temperature:22DEG
 Operators:HUA
 Test Date:2017-12-13

γ Range: 0 - 180DEG
 γ Interval: 0.5DEG
 Test System:EVERFINE GO-2000B_V1 SYSTEM V2.0.350
 Humidity:43%
 Test Distance:12.218m [K=1.0000]
 Remarks:

LED Avg.L Report

Test:U:120.2V I:0.2109A P:25.73W PF:0.9860 Lamp Flux:3279.59x1 lm		
NAME: ASD Lighting corp	TYPE:LED PANEL	WEIGHT:
SPEC.: ASD-ELP05-22D27CC-PRM(4000K)	DIM.: 603x603mm	SERIAL No.:BLD20171213N03
MFR.: ASD Lighting corp	SUR.:0.558*0.558	Shielding Angle:

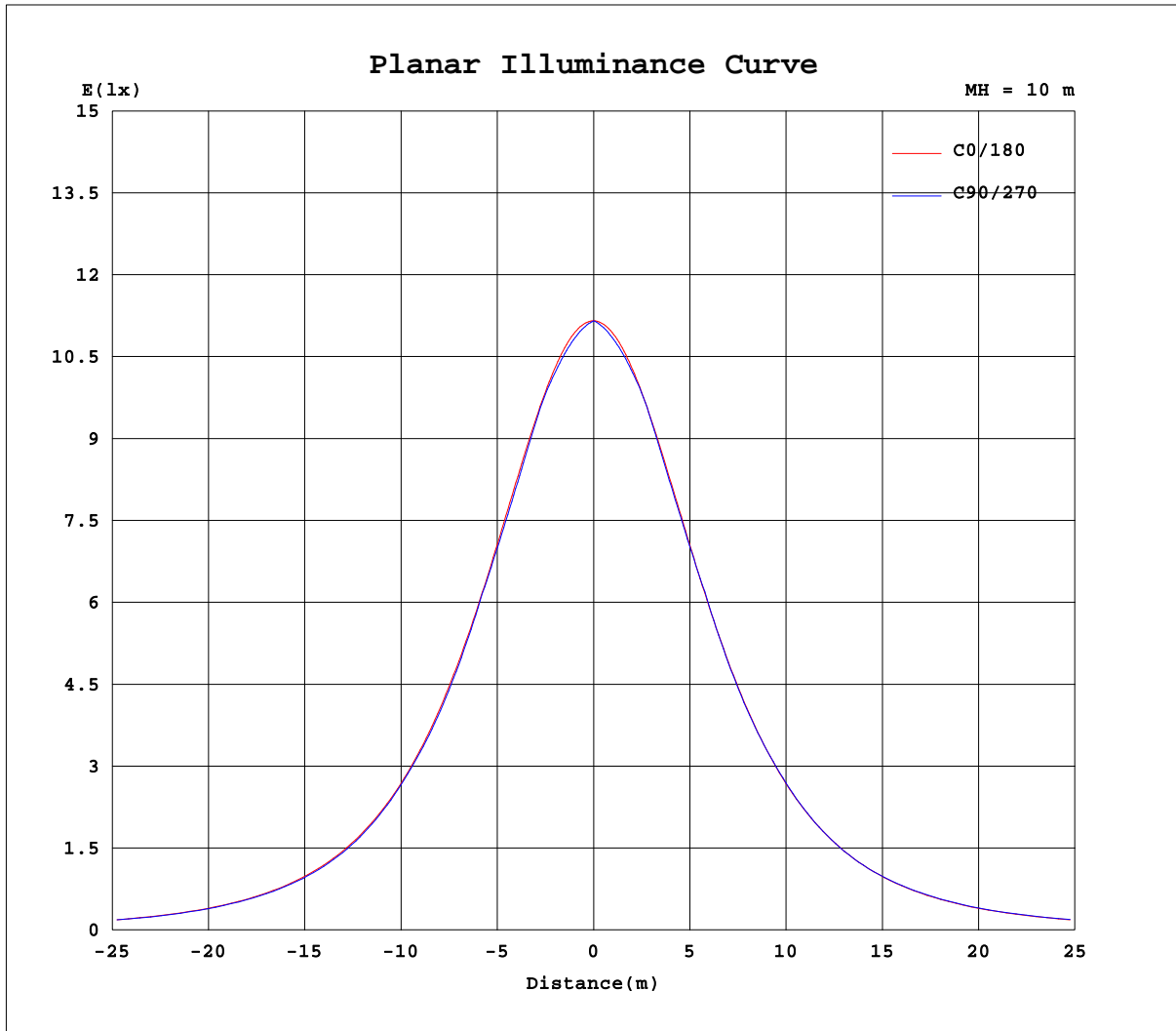
AvgL	cd/m2
L_0~180(65)av	3214
L_0~180(75)av	2969
L_0~180(85)av	1856
L_90~270(65)av	3205
L_90~270(75)av	2991
L_90~270(85)av	2470
L_45(65)av	3199
L_45(75)av	2984
L_45(85)av	2464

Standard: GB/T 29293-2012

C Range: 0 - 360DEG
C Interval: 5.0DEG
Test Speed: HIGH
Temperature:22DEG
Operators:HUA
Test Date:2017-12-13

γ Range: 0 - 180DEG
 γ Interval: 0.5DEG
Test System:EVERFINE GO-2000B_V1 SYSTEM V2.0.350
Humidity:43%
Test Distance:12.218m [K=1.0000]
Remarks:

Planar Illuminance Curve



C Range: 0 - 360DEG
 C Interval: 5.0DEG
 Test Speed: HIGH
 Temperature: 22DEG
 Operators: HUA
 Test Date: 2017-12-13

γ Range: 0 - 180DEG
 γ Interval: 0.5DEG
 Test System: EVERFINE GO-2000B_V1 SYSTEM V2.0.350
 Humidity: 43%
 Test Distance: 12.218m [K=1.0000]
 Remarks:

LUMINOUS DISTRIBUTION INTENSITY DATA

Test:U:120.2V I:0.2109A P:25.73W PF:0.9860 Lamp Flux:3279.59x1 lm		
NAME: ASD Lighting corp	TYPE:LED PANEL	WEIGHT:
SPEC.: ASD-ELP05-22D27CC-PRM(4000K)	DIM.: 603x603mm	SERIAL No.:BLD20171213N03
MFR.: ASD Lighting corp	SUR.:0.558*0.558	Shielding Angle:

Table--1

UNIT: cd

C(DEG) γ (DEG)	0	5	10	15	20	25	30	35	40	45	50	55	60	65	70	75	80	85	90
0	1116	1116	1116	1116	1116	1116	1116	1116	1116	1116	1116	1116	1116	1116	1116	1116	1116	1116	1116
5	1112	1110	1109	1108	1107	1106	1105	1105	1104	1104	1103	1103	1102	1102	1102	1102	1102	1102	1102
10	1098	1095	1093	1091	1090	1089	1088	1087	1087	1087	1087	1087	1087	1087	1087	1087	1087	1087	1087
15	1075	1071	1069	1067	1065	1064	1064	1064	1065	1065	1066	1068	1069	1070	1071	1070	1070	1070	1070
20	1043	1039	1035	1033	1032	1033	1034	1035	1038	1039	1039	1038	1036	1035	1034	1033	1032	1032	1032
25	1002	997	994	992	993	994	997	999	997	994	993	992	991	991	991	991	991	991	991
30	953	948	945	944	946	950	950	946	944	943	943	943	944	946	947	948	949	950	950
35	896	890	888	889	893	893	889	887	887	888	890	893	891	889	888	887	886	885	885
40	832	826	824	827	830	825	823	824	827	828	825	823	822	821	821	821	821	821	820
45	761	755	755	759	755	753	754	759	755	752	751	751	752	753	754	755	754	754	754
50	683	677	679	681	677	678	681	677	675	675	677	678	678	677	675	674	673	673	673
55	601	596	600	596	596	598	594	594	596	597	595	593	592	591	590	590	590	590	589
60	514	509	512	509	512	508	509	511	509	507	506	506	505	506	506	506	506	506	506
65	423	420	420	422	419	420	421	418	418	418	418	419	418	417	416	416	416	415	415
70	331	330	328	328	330	328	327	328	328	328	327	327	326	326	325	325	324	324	324
75	239	239	238	239	238	238	238	237	237	237	236	236	236	235	235	235	234	234	234
80	151	141	139	145	149	150	149	149	148	147	146	146	146	146	146	146	145	145	145
85	51.5	44.7	51.3	60.3	64.5	65.3	65.2	64.6	63.8	63.0	62.0	61.2	60.6	60.0	59.2	58.7	58.5	58.5	58.5
90	0.77	1.60	1.59	1.55	1.52	1.68	2.25	2.58	2.70	2.94	3.03	3.14	3.25	3.33	3.36	3.50	3.74	3.96	4.11
95	0.00	0.00	0.00	0.00	0.00	0.00	0.00	0.00	0.00	0.00	0.00	0.00	0.00	0.00	0.00	0.00	0.00	0.00	0.00
100	0.00	0.00	0.00	0.00	0.00	0.00	0.00	0.00	0.00	0.00	0.00	0.00	0.00	0.00	0.00	0.00	0.00	0.00	0.00
105	0.00	0.00	0.00	0.00	0.00	0.00	0.00	0.00	0.00	0.00	0.00	0.00	0.00	0.00	0.00	0.00	0.00	0.00	0.00
110	0.00	0.00	0.00	0.00	0.00	0.00	0.00	0.00	0.00	0.00	0.00	0.00	0.00	0.00	0.00	0.00	0.00	0.00	0.00
115	0.00	0.00	0.00	0.00	0.00	0.00	0.00	0.00	0.00	0.00	0.00	0.00	0.00	0.00	0.00	0.00	0.00	0.00	0.00
120	0.00	0.00	0.00	0.00	0.00	0.00	0.00	0.00	0.00	0.00	0.00	0.00	0.00	0.00	0.00	0.00	0.00	0.00	0.00
125	0.00	0.00	0.00	0.00	0.00	0.00	0.00	0.00	0.00	0.00	0.00	0.00	0.00	0.00	0.00	0.00	0.00	0.00	0.00
130	0.00	0.00	0.00	0.00	0.00	0.00	0.00	0.00	0.00	0.00	0.00	0.00	0.00	0.00	0.00	0.00	0.00	0.00	0.00
135	0.00	0.00	0.00	0.00	0.00	0.00	0.00	0.00	0.00	0.00	0.00	0.00	0.00	0.00	0.00	0.00	0.00	0.00	0.00
140	0.00	0.00	0.00	0.00	0.00	0.00	0.00	0.00	0.00	0.00	0.00	0.00	0.00	0.00	0.00	0.00	0.00	0.00	0.00
145	0.00	0.00	0.00	0.00	0.00	0.00	0.00	0.00	0.00	0.00	0.00	0.00	0.00	0.00	0.00	0.00	0.00	0.00	0.00
150	0.00	0.00	0.00	0.00	0.00	0.00	0.00	0.00	0.00	0.00	0.00	0.00	0.00	0.00	0.00	0.00	0.00	0.00	0.00
155	0.00	0.00	0.00	0.00	0.00	0.00	0.00	0.00	0.00	0.00	0.00	0.00	0.00	0.00	0.00	0.00	0.00	0.00	0.00
160	0.00	0.00	0.00	0.00	0.00	0.00	0.00	0.00	0.00	0.00	0.00	0.00	0.00	0.00	0.00	0.00	0.00	0.00	0.00
165	0.00	0.00	0.00	0.00	0.00	0.00	0.00	0.00	0.00	0.00	0.00	0.00	0.00	0.00	0.00	0.00	0.00	0.00	0.00
170	0.00	0.00	0.00	0.00	0.00	0.00	0.00	0.00	0.00	0.00	0.00	0.00	0.00	0.00	0.00	0.00	0.00	0.00	0.00
175	0.00	0.00	0.00	0.00	0.00	0.00	0.00	0.00	0.00	0.00	0.00	0.00	0.00	0.00	0.00	0.00	0.00	0.00	0.00
180	0.00	0.00	0.00	0.00	0.00	0.00	0.00	0.00	0.00	0.00	0.00	0.00	0.00	0.00	0.00	0.00	0.00	0.00	0.00

C Range: 0 - 360DEG
 C Interval: 5.0DEG
 Test Speed: HIGH
 Temperature:22DEG
 Operators:HUA
 Test Date:2017-12-13

γ Range: 0 - 180DEG
 γ Interval: 0.5DEG
 Test System:EVERFINE GO-2000B_V1 SYSTEM V2.0.350
 Humidity:43%
 Test Distance:12.218m [K=1.0000]
 Remarks:

LUMINOUS DISTRIBUTION INTENSITY DATA

Test:U:120.2V I:0.2109A P:25.73W PF:0.9860 Lamp Flux:3279.59x1 lm		
NAME: ASD Lighting corp	TYPE:LED PANEL	WEIGHT:
SPEC.: ASD-ELP05-22D27CC-PRM(4000K)	DIM.: 603x603mm	SERIAL No.:BLD20171213N03
MFR.: ASD Lighting corp	SUR.:0.558*0.558	Shielding Angle:

Table--2

UNIT: cd

C(DEG) γ (DEG)	95	100	105	110	115	120	125	130	135	140	145	150	155	160	165	170	175	180	185
0	1116	1116	1116	1116	1116	1116	1116	1116	1116	1116	1116	1116	1116	1116	1116	1116	1116	1116	1116
5	1102	1102	1102	1102	1102	1102	1103	1103	1103	1104	1104	1105	1106	1107	1108	1109	1110	1111	1110
10	1087	1087	1087	1087	1086	1086	1086	1086	1086	1086	1087	1087	1088	1089	1091	1092	1095	1097	1095
15	1070	1070	1070	1070	1069	1068	1067	1065	1064	1063	1063	1063	1063	1064	1065	1067	1070	1073	1070
20	1032	1032	1032	1033	1033	1035	1036	1037	1037	1036	1033	1032	1031	1031	1032	1034	1037	1041	1037
25	991	990	990	990	990	990	990	991	992	995	996	995	992	990	990	992	995	1001	996
30	949	949	948	946	945	943	942	941	940	941	943	947	947	943	941	942	945	951	946
35	885	885	886	886	888	890	892	888	886	884	884	886	889	889	886	885	888	894	888
40	820	820	820	819	819	820	821	823	826	825	821	820	821	826	823	821	823	830	824
45	754	753	753	752	751	749	749	749	750	752	756	752	750	752	755	751	752	759	752
50	672	673	673	674	675	676	676	674	673	672	674	679	675	674	677	676	675	682	675
55	589	589	589	589	589	590	591	592	594	592	591	592	596	593	593	596	593	600	594
60	506	506	505	505	504	504	503	503	504	506	508	506	506	510	506	509	506	512	507
65	415	415	415	415	416	416	417	416	415	415	415	418	417	416	420	417	418	422	418
70	324	324	324	324	324	325	325	325	326	326	325	325	325	327	326	326	328	330	329
75	234	234	234	234	234	234	234	234	234	234	235	235	235	235	236	236	236	239	237
80	145	145	145	145	145	145	145	145	145	146	146	146	147	147	142	136	137	151	150
85	58.5	58.4	58.4	58.7	59.1	59.4	60.0	60.5	61.3	62.1	62.7	63.0	62.8	61.7	57.5	49.2	40.4	49.1	59.0
90	4.02	3.72	3.39	3.11	2.87	2.63	2.49	2.23	2.04	2.01	1.76	1.56	1.55	1.55	1.55	1.54	1.54	1.37	0.91
95	0.00	0.00	0.00	0.00	0.00	0.00	0.00	0.00	0.00	0.00	0.00	0.00	0.00	0.00	0.00	0.00	0.00	0.00	0.00
100	0.00	0.00	0.00	0.00	0.00	0.00	0.00	0.00	0.00	0.00	0.00	0.00	0.00	0.00	0.00	0.00	0.00	0.00	0.00
105	0.00	0.00	0.00	0.00	0.00	0.00	0.00	0.00	0.00	0.00	0.00	0.00	0.00	0.00	0.00	0.00	0.00	0.00	0.00
110	0.00	0.00	0.00	0.00	0.00	0.00	0.00	0.00	0.00	0.00	0.00	0.00	0.00	0.00	0.00	0.00	0.00	0.00	0.00
115	0.00	0.00	0.00	0.00	0.00	0.00	0.00	0.00	0.00	0.00	0.00	0.00	0.00	0.00	0.00	0.00	0.00	0.00	0.00
120	0.00	0.00	0.00	0.00	0.00	0.00	0.00	0.00	0.00	0.00	0.00	0.00	0.00	0.00	0.00	0.00	0.00	0.00	0.00
125	0.00	0.00	0.00	0.00	0.00	0.00	0.00	0.00	0.00	0.00	0.00	0.00	0.00	0.00	0.00	0.00	0.00	0.00	0.00
130	0.00	0.00	0.00	0.00	0.00	0.00	0.00	0.00	0.00	0.00	0.00	0.00	0.00	0.00	0.00	0.00	0.00	0.00	0.00
135	0.00	0.00	0.00	0.00	0.00	0.00	0.00	0.00	0.00	0.00	0.00	0.00	0.00	0.00	0.00	0.00	0.00	0.00	0.00
140	0.00	0.00	0.00	0.00	0.00	0.00	0.00	0.00	0.00	0.00	0.00	0.00	0.00	0.00	0.00	0.00	0.00	0.00	0.00
145	0.00	0.00	0.00	0.00	0.00	0.00	0.00	0.00	0.00	0.00	0.00	0.00	0.00	0.00	0.00	0.00	0.00	0.00	0.00
150	0.00	0.00	0.00	0.00	0.00	0.00	0.00	0.00	0.00	0.00	0.00	0.00	0.00	0.00	0.00	0.00	0.00	0.00	0.00
155	0.00	0.00	0.00	0.00	0.00	0.00	0.00	0.00	0.00	0.00	0.00	0.00	0.00	0.00	0.00	0.00	0.00	0.00	0.00
160	0.00	0.00	0.00	0.00	0.00	0.00	0.00	0.00	0.00	0.00	0.00	0.00	0.00	0.00	0.00	0.00	0.00	0.00	0.00
165	0.00	0.00	0.00	0.00	0.00	0.00	0.00	0.00	0.00	0.00	0.00	0.00	0.00	0.00	0.00	0.00	0.00	0.00	0.00
170	0.00	0.00	0.00	0.00	0.00	0.00	0.00	0.00	0.00	0.00	0.00	0.00	0.00	0.00	0.00	0.00	0.00	0.00	0.00
175	0.00	0.00	0.00	0.00	0.00	0.00	0.00	0.00	0.00	0.00	0.00	0.00	0.00	0.00	0.00	0.00	0.00	0.00	0.00
180	0.00	0.00	0.00	0.00	0.00	0.00	0.00	0.00	0.00	0.00	0.00	0.00	0.00	0.00	0.00	0.00	0.00	0.00	0.00

C Range: 0 - 360DEG
 C Interval: 5.0DEG
 Test Speed: HIGH
 Temperature:22DEG
 Operators:HUA
 Test Date:2017-12-13

γ Range: 0 - 180DEG
 γ Interval: 0.5DEG
 Test System:EVERFINE GO-2000B_V1 SYSTEM V2.0.350
 Humidity:43%
 Test Distance:12.218m [K=1.0000]
 Remarks:

LUMINOUS DISTRIBUTION INTENSITY DATA

Test:U:120.2V I:0.2109A P:25.73W PF:0.9860 Lamp Flux:3279.59x1 lm		
NAME: ASD Lighting corp	TYPE:LED PANEL	WEIGHT:
SPEC.: ASD-ELP05-22D27CC-PRM(4000K)	DIM.: 603x603mm	SERIAL No.:BLD20171213N03
MFR.: ASD Lighting corp	SUR.:0.558*0.558	Shielding Angle:

Table--3

UNIT: cd

C(DEC) γ (DEC)	190	195	200	205	210	215	220	225	230	235	240	245	250	255	260	265	270	275	280
0	1116	1116	1116	1116	1116	1116	1116	1116	1116	1116	1116	1116	1116	1116	1116	1116	1116	1116	1116
5	1109	1108	1107	1106	1106	1105	1104	1104	1103	1103	1103	1103	1103	1102	1102	1102	1102	1102	1103
10	1093	1091	1090	1089	1088	1088	1087	1087	1087	1087	1088	1088	1088	1088	1089	1089	1089	1089	1089
15	1068	1066	1065	1064	1064	1064	1065	1066	1067	1069	1070	1071	1072	1072	1072	1072	1073	1073	1073
20	1034	1033	1032	1032	1033	1035	1038	1040	1040	1039	1038	1036	1036	1035	1035	1035	1035	1035	1035
25	993	991	992	993	997	999	998	995	994	993	993	993	994	994	994	995	995	995	995
30	943	943	945	949	950	946	944	944	945	946	947	949	951	952	954	954	955	954	954
35	886	887	891	892	888	887	888	890	893	897	895	893	892	892	891	891	891	891	892
40	822	825	828	824	823	825	829	831	828	827	826	826	826	827	827	827	828	828	828
45	752	757	754	753	755	761	757	755	755	755	757	758	760	761	762	762	762	762	762
50	677	679	676	679	682	679	678	679	681	683	684	683	682	682	682	682	682	682	682
55	598	595	596	599	596	596	598	601	600	599	598	598	599	599	599	600	600	600	600
60	510	508	513	510	510	513	512	512	512	512	513	514	515	516	517	517	518	518	517
65	419	422	420	421	423	422	422	423	425	426	426	426	427	427	427	427	427	427	428
70	328	328	330	330	331	332	334	334	335	335	335	336	336	336	337	337	337	337	338
75	238	239	239	240	242	242	243	244	245	245	246	247	247	247	247	248	248	248	248
80	150	151	152	153	154	154	155	156	156	157	158	159	159	159	160	160	160	160	160
85	59.6	62.9	67.1	68.9	70.0	70.7	71.0	71.2	71.6	72.0	72.5	73.0	73.5	74.0	74.8	75.4	75.3	75.1	74.5
90	0.91	0.93	1.31	3.06	4.06	4.98	5.74	6.34	7.21	8.06	8.90	9.72	10.5	11.3	12.1	12.6	12.6	12.3	11.7
95	0.00	0.00	0.00	0.00	0.00	0.00	0.00	0.00	0.00	0.00	0.00	0.00	0.00	0.00	0.00	0.00	0.00	0.00	0.00
100	0.00	0.00	0.00	0.00	0.00	0.00	0.00	0.00	0.00	0.00	0.00	0.00	0.00	0.00	0.00	0.00	0.00	0.00	0.00
105	0.00	0.00	0.00	0.00	0.00	0.00	0.00	0.00	0.00	0.00	0.00	0.00	0.00	0.00	0.00	0.00	0.00	0.00	0.00
110	0.00	0.00	0.00	0.00	0.00	0.00	0.00	0.00	0.00	0.00	0.00	0.00	0.00	0.00	0.00	0.00	0.00	0.00	0.00
115	0.00	0.00	0.00	0.00	0.00	0.00	0.00	0.00	0.00	0.00	0.00	0.00	0.00	0.00	0.00	0.00	0.00	0.00	0.00
120	0.00	0.00	0.00	0.00	0.00	0.00	0.00	0.00	0.00	0.00	0.00	0.00	0.00	0.00	0.00	0.00	0.00	0.00	0.00
125	0.00	0.00	0.00	0.00	0.00	0.00	0.00	0.00	0.00	0.00	0.00	0.00	0.00	0.00	0.00	0.00	0.00	0.00	0.00
130	0.00	0.00	0.00	0.00	0.00	0.00	0.00	0.00	0.00	0.00	0.00	0.00	0.00	0.00	0.00	0.00	0.00	0.00	0.00
135	0.00	0.00	0.00	0.00	0.00	0.00	0.00	0.00	0.00	0.00	0.00	0.00	0.00	0.00	0.00	0.00	0.00	0.00	0.00
140	0.00	0.00	0.00	0.00	0.00	0.00	0.00	0.00	0.00	0.00	0.00	0.00	0.00	0.00	0.00	0.00	0.00	0.00	0.00
145	0.00	0.00	0.00	0.00	0.00	0.00	0.00	0.00	0.00	0.00	0.00	0.00	0.00	0.00	0.00	0.00	0.00	0.00	0.00
150	0.00	0.00	0.00	0.00	0.00	0.00	0.00	0.00	0.00	0.00	0.00	0.00	0.00	0.00	0.00	0.00	0.00	0.00	0.00
155	0.00	0.00	0.00	0.00	0.00	0.00	0.00	0.00	0.00	0.00	0.00	0.00	0.00	0.00	0.00	0.00	0.00	0.00	0.00
160	0.00	0.00	0.00	0.00	0.00	0.00	0.00	0.00	0.00	0.00	0.00	0.00	0.00	0.00	0.00	0.00	0.00	0.00	0.00
165	0.00	0.00	0.00	0.00	0.00	0.00	0.00	0.00	0.00	0.00	0.00	0.00	0.00	0.00	0.00	0.00	0.00	0.00	0.00
170	0.00	0.00	0.00	0.00	0.00	0.00	0.00	0.00	0.00	0.00	0.00	0.00	0.00	0.00	0.00	0.00	0.00	0.00	0.00
175	0.00	0.00	0.00	0.00	0.00	0.00	0.00	0.00	0.00	0.00	0.00	0.00	0.00	0.00	0.00	0.00	0.00	0.00	0.00
180	0.00	0.00	0.00	0.00	0.00	0.00	0.00	0.00	0.00	0.00	0.00	0.00	0.00	0.00	0.00	0.00	0.00	0.00	0.00

C Range: 0 - 360DEG
 C Interval: 5.0DEG
 Test Speed: HIGH
 Temperature:22DEG
 Operators:HUA
 Test Date:2017-12-13

γ Range: 0 - 180DEG
 γ Interval: 0.5DEG
 Test System:EVERFINE GO-2000B_V1 SYSTEM V2.0.350
 Humidity:43%
 Test Distance:12.218m [K=1.0000]
 Remarks:

LUMINOUS DISTRIBUTION INTENSITY DATA

Test:U:120.2V I:0.2109A P:25.73W PF:0.9860 Lamp Flux:3279.59x1 lm		
NAME: ASD Lighting corp	TYPE:LED PANEL	WEIGHT:
SPEC.: ASD-ELP05-22D27CC-PRM(4000K)	DIM.: 603x603mm	SERIAL No.:BLD20171213N03
MFR.: ASD Lighting corp	SUR.:0.558*0.558	Shielding Angle:

Table--4

UNIT: cd

C(DEC) γ (DEC)	285	290	295	300	305	310	315	320	325	330	335	340	345	350	355				
0	1116	1116	1116	1116	1116	1116	1116	1116	1116	1116	1116	1116	1116	1116	1116				
5	1103	1103	1103	1103	1103	1104	1104	1105	1105	1106	1107	1107	1108	1109	1110				
10	1089	1088	1088	1088	1088	1088	1088	1088	1088	1089	1090	1091	1092	1094	1095				
15	1073	1073	1072	1071	1070	1068	1067	1066	1065	1065	1065	1066	1067	1069	1072				
20	1036	1037	1037	1038	1040	1041	1041	1039	1037	1035	1034	1033	1034	1036	1039				
25	995	994	994	994	995	995	997	1000	1001	999	996	994	993	994	997				
30	953	951	950	948	947	946	946	946	948	952	951	947	945	945	948				
35	892	893	894	896	898	894	892	890	889	891	895	894	890	888	890				
40	827	827	827	827	828	830	833	830	827	825	827	832	828	825	826				
45	762	761	760	758	757	756	757	759	762	757	755	757	760	755	755				
50	683	684	685	686	685	683	681	680	681	684	680	679	682	680	678				
55	600	600	600	600	601	602	603	601	599	598	601	598	597	601	596				
60	517	516	515	515	514	514	514	516	516	513	512	515	510	513	509				
65	428	428	428	428	428	427	426	424	424	425	424	422	424	420	420				
70	338	338	338	338	337	337	336	336	334	332	332	332	330	329	331				
75	248	249	249	248	247	247	246	245	244	243	242	241	241	239	239				
80	160	160	160	159	158	157	157	156	156	155	155	154	152	152	150				
85	73.8	73.3	73.0	72.6	72.2	72.0	71.7	71.4	71.1	70.7	69.8	67.9	62.9	59.2	58.9				
90	10.8	10.0	9.27	8.53	7.92	7.21	6.38	5.54	4.60	3.66	2.16	0.89	0.88	0.88	0.88				
95	0.00	0.00	0.00	0.00	0.00	0.00	0.00	0.00	0.00	0.00	0.00	0.00	0.00	0.00	0.00				
100	0.00	0.00	0.00	0.00	0.00	0.00	0.00	0.00	0.00	0.00	0.00	0.00	0.00	0.00	0.00				
105	0.00	0.00	0.00	0.00	0.00	0.00	0.00	0.00	0.00	0.00	0.00	0.00	0.00	0.00	0.00				
110	0.00	0.00	0.00	0.00	0.00	0.00	0.00	0.00	0.00	0.00	0.00	0.00	0.00	0.00	0.00				
115	0.00	0.00	0.00	0.00	0.00	0.00	0.00	0.00	0.00	0.00	0.00	0.00	0.00	0.00	0.00				
120	0.00	0.00	0.00	0.00	0.00	0.00	0.00	0.00	0.00	0.00	0.00	0.00	0.00	0.00	0.00				
125	0.00	0.00	0.00	0.00	0.00	0.00	0.00	0.00	0.00	0.00	0.00	0.00	0.00	0.00	0.00				
130	0.00	0.00	0.00	0.00	0.00	0.00	0.00	0.00	0.00	0.00	0.00	0.00	0.00	0.00	0.00				
135	0.00	0.00	0.00	0.00	0.00	0.00	0.00	0.00	0.00	0.00	0.00	0.00	0.00	0.00	0.00				
140	0.00	0.00	0.00	0.00	0.00	0.00	0.00	0.00	0.00	0.00	0.00	0.00	0.00	0.00	0.00				
145	0.00	0.00	0.00	0.00	0.00	0.00	0.00	0.00	0.00	0.00	0.00	0.00	0.00	0.00	0.00				
150	0.00	0.00	0.00	0.00	0.00	0.00	0.00	0.00	0.00	0.00	0.00	0.00	0.00	0.00	0.00				
155	0.00	0.00	0.00	0.00	0.00	0.00	0.00	0.00	0.00	0.00	0.00	0.00	0.00	0.00	0.00				
160	0.00	0.00	0.00	0.00	0.00	0.00	0.00	0.00	0.00	0.00	0.00	0.00	0.00	0.00	0.00				
165	0.00	0.00	0.00	0.00	0.00	0.00	0.00	0.00	0.00	0.00	0.00	0.00	0.00	0.00	0.00				
170	0.00	0.00	0.00	0.00	0.00	0.00	0.00	0.00	0.00	0.00	0.00	0.00	0.00	0.00	0.00				
175	0.00	0.00	0.00	0.00	0.00	0.00	0.00	0.00	0.00	0.00	0.00	0.00	0.00	0.00	0.00				
180	0.00	0.00	0.00	0.00	0.00	0.00	0.00	0.00	0.00	0.00	0.00	0.00	0.00	0.00	0.00				

C Range: 0 - 360DEG
 C Interval: 5.0DEG
 Test Speed: HIGH
 Temperature:22DEG
 Operators:HUA
 Test Date:2017-12-13

γ Range: 0 - 180DEG
 γ Interval: 0.5DEG
 Test System:EVERFINE GO-2000B_V1 SYSTEM V2.0.350
 Humidity:43%
 Test Distance:12.218m [K=1.0000]
 Remarks: