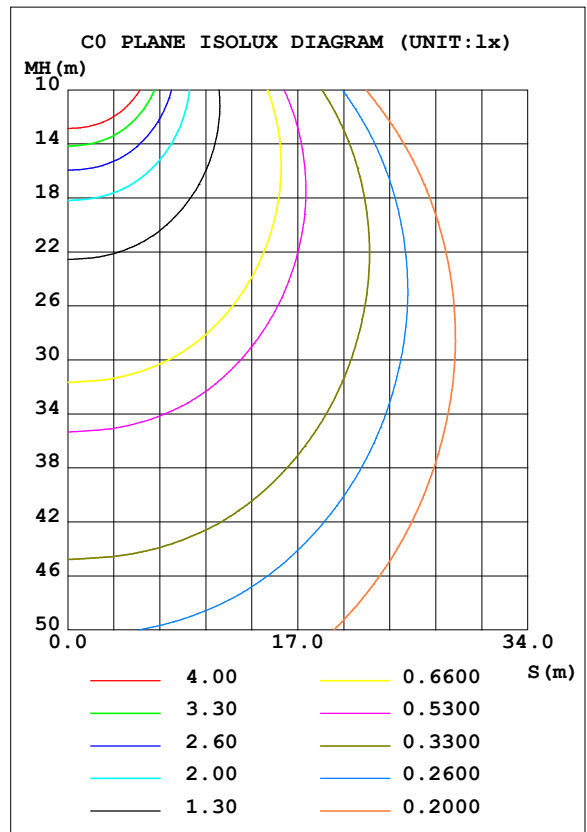
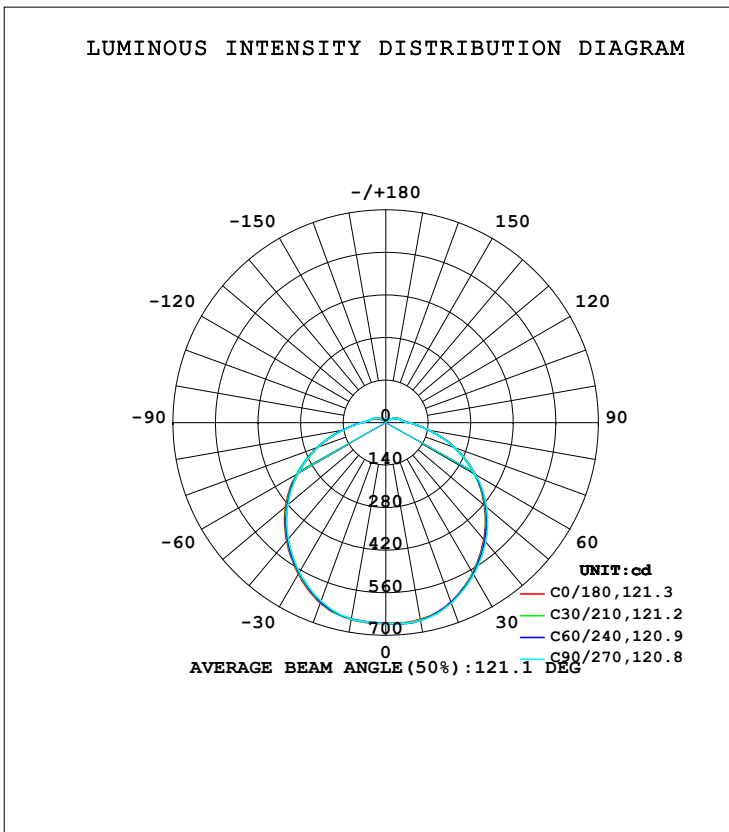


LUMINAIRE PHOTOMETRIC TEST REPORT

Test:U:120.01V I:0.3756A P:40.568W PF:0.8987 Freq:60.00Hz Lamp Flux:2372.75x1 lm		
NAME: ASD lighting Corp	TYPE:	WEIGHT:
SPEC.:ASD-LFC-HN-20D42-AC-5000K	DIM.:	SERIAL No.:
MFR.: ASD lighting Corp	SUR.:0.43*0.39	Shielding Angle:

DATA OF LAMP		PHOTOMETRIC DATA				Eff: 58.49 lm/W
MODEL	ASD-LFC-HN-20D42-AC	I _{max} (cd)	664.0	S/MH (C0/180)		1.29
NOMINAL POWER (W)	--	LOR (%)	100.0	S/MH (C90/270)		1.28
RATED VOLTAGE (V)	--	TOTAL FLUX (lm)	2372.8	<input type="checkbox"/> UP, DN (C0-180)		4.2,46.1
NOMINAL FLUX (lm)	2372.75	CIE CLASS	DIRECT	<input type="checkbox"/> UP, DN (C180-360)		4.3,45.5
LAMPS INSIDE	1	<input type="checkbox"/> up (%)	8.5	CIBSE SHR NOM		1.50
TEST VOLTAGE (V)	--	<input type="checkbox"/> down (%)	91.5	CIBSE SHR MAX		1.50



C Range: 0 - 360DEG
 C Interval: 30.0DEG
 Test Speed: HIGH
 Temperature:25.3DEG
 Operators:admin
 Test Date:2022-03-16

Range: 0 - 180DEG
 Interval: 1.0DEG
 Test System:EVERFINE GO-2000B_V1 SYSTEM V2.00.411
 Humidity:65.0%
 Test Distance:8.780m [K=1.0000]
 Remarks:

ZONAL FLUX DIAGRAM

ZONAL FLUX DIAGRAM:

mm	C0	C45	C90	C135	C180	C225	C270	C315	mm	□ zone	□ total	%lum, lamp
10	657.3	660.1	661.5	661.9	657.5	655.7	655.2	656.1	0- 10	63.02	63.02	2.66,2.66
20	627.7	630.1	631.9	632.6	631.4	628.1	624.1	624.7	10- 20	182.8	245.8	10.4,10.4
30	571.3	574.6	578.4	578.9	575.7	571.1	568.2	568.4	20- 30	278.0	523.8	22.1,22.1
40	501.8	507.3	512.2	512.5	508.1	503.3	498.6	499.5	30- 40	338.5	862.3	36.3,36.3
50	424.0	428.8	433.1	433.7	430.3	423.9	420.1	420.5	40- 50	360.8	1223	51.5,51.5
60	337.0	338.4	339.6	342.5	337.1	334.6	332.2	331.3	50- 60	343.0	1566	66,66
70	240.1	242.0	243.1	245.2	241.7	238.4	236.7	236.4	60- 70	286.3	1852	78.1,78.1
80	143.2	145.0	146.9	147.5	145.7	143.7	141.6	142.2	70- 80	202.6	2055	86.6,86.6
90	77.13	75.87	75.70	76.47	77.16	77.87	77.57	77.05	80- 90	116.9	2172	91.5,91.5
100	52.01	52.01	52.38	53.06	52.17	52.48	52.83	52.34	90-100	67.70	2240	94.4,94.4
110	42.48	40.58	39.76	40.28	40.95	42.25	42.34	41.95	100-110	49.79	2289	96.5,96.5
120	27.16	28.30	26.68	27.52	25.22	30.37	30.86	30.57	110-120	34.85	2324	98,98
130	18.07	17.99	17.00	17.09	15.91	19.75	21.03	20.68	120-130	21.09	2345	98.8,98.8
140	12.03	11.10	10.41	10.46	10.09	12.22	13.43	13.23	130-140	11.62	2357	99.3,99.3
150	10.40	10.25	10.42	10.43	9.666	9.618	9.887	9.793	140-150	6.540	2363	99.6,99.6
160	11.63	11.39	11.59	11.50	11.19	10.84	11.35	11.09	150-160	4.929	2368	99.8,99.8
170	11.79	11.68	12.11	11.86	11.75	11.85	12.19	11.85	160-170	3.312	2372	100,100
180	11.04	10.97	11.07	10.91	11.03	10.97	11.06	10.91	170-180	1.091	2373	100,100
DEG	LUMINOUS INTENSITY:cd									UNIT:lm		

Conical surface Flux(90deg): 1042.4 lm

%lum = 43.9%

%lamp = 43.9%

Conical surface Flux(120deg): 1566.1 lm

%lum = 66.0%

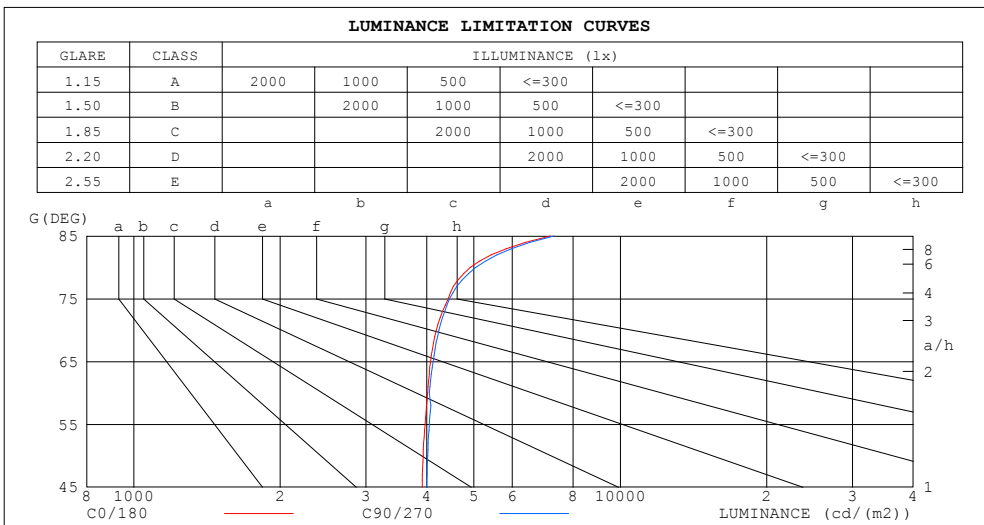
%lamp = 66.0%

C Range: 0 - 360DEG
 C Interval: 30.0DEG
 Test Speed: HIGH
 Temperature:25.3DEG
 Operators:admin
 Test Date:2022-03-16

□ Range: 0 - 180DEG
 □ Interval: 1.0DEG
 Test System:EVERFINE GO-2000B_V1 SYSTEM V2.00.411
 Humidity:65.0%
 Test Distance:8.780m [K=1.0000]
 Remarks:

LUMINANCE LIMITATION CURVES

Test:U:120.01V I:0.3756A P:40.568W PF:0.8987 Freq:60.00Hz Lamp Flux:2372.75x1 lm		
NAME: ASD lighting Corp	TYPE:	WEIGHT:
SPEC.:ASD-LFC-HN-20D42-AC-5000K	DIM.:	SERIAL No.:
MFR.: ASD lighting Corp	SUR.:0.43*0.39	Shielding Angle:



LUMINANCE cd/(m2)		
G (DEG)	C0/180	C90/270
85	7187	7305
80	4919	5046
75	4427	4458
70	4185	4239
65	4076	4123
60	4019	4050
55	3969	4051
50	3933	4018
45	3916	3999

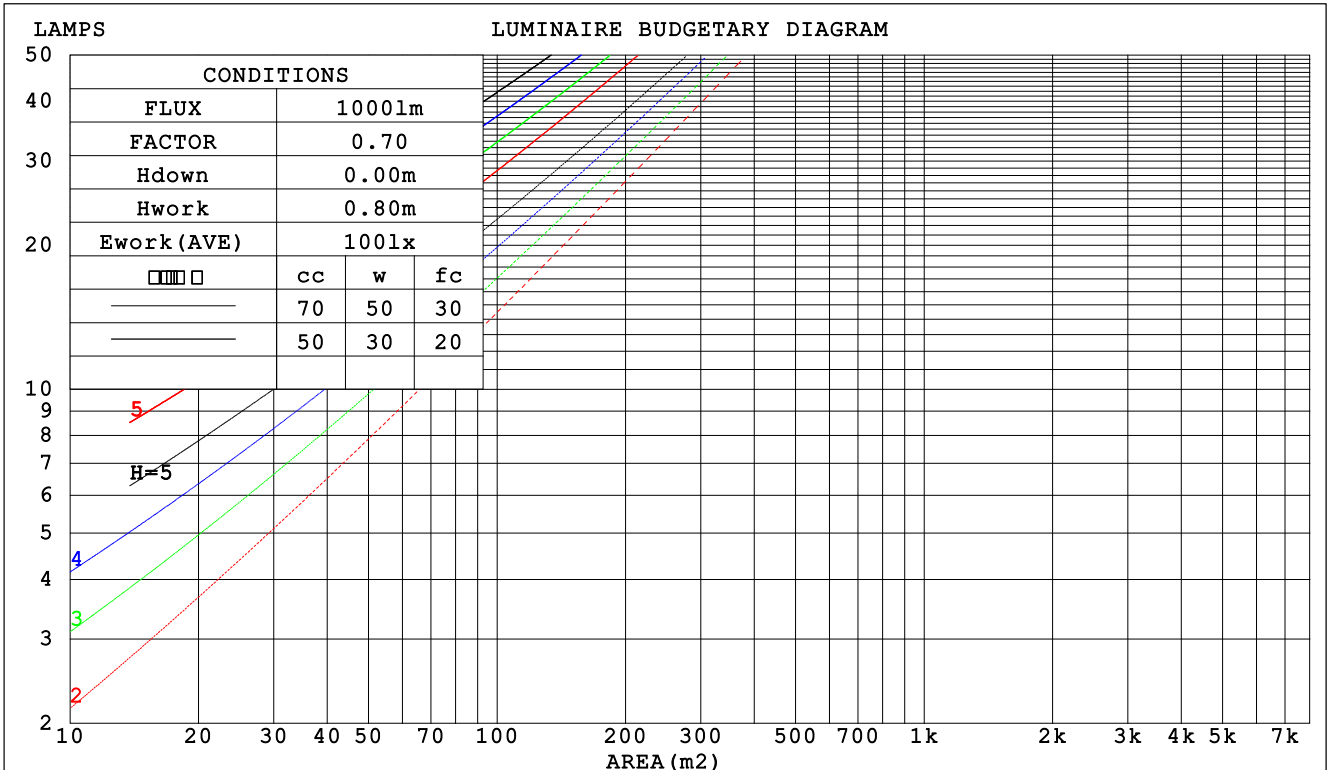
C Range: 0 - 360DEG
 C Interval: 30.0DEG
 Test Speed: HIGH
 Temperature:25.3DEG
 Operators:admin
 Test Date:2022-03-16

Range: 0 - 180DEG
 Interval: 1.0DEG
 Test System:EVERFINE GO-2000B_V1 SYSTEM V2.00.411
 Humidity:65.0%
 Test Distance:8.780m [K=1.0000]
 Remarks:

CU AND LUMINAIRE BUDGETARY ESTIMATE DIAGRAM

Test:U:120.01V I:0.3756A P:40.568W PF:0.8987 Freq:60.00Hz Lamp Flux:2372.75x1 lm		
NAME: ASD lighting Corp	TYPE:	WEIGHT:
SPEC.:ASD-LFC-HN-20D42-AC-5000K	DIM.:	SERIAL No.:
MFR.: ASD lighting Corp	SUR.:0.43*0.39	Shielding Angle:

□cc	80%			70%			50%			30%			10%			0
□w	50%	30%	10%	50%	30%	10%	50%	30%	10%	50%	30%	10%	50%	30%	10%	0
□fc	20%			20%			20%			20%			20%			0
RCR	RCR:Room Cavity Ratio						Coefficients of Utilization(CU)									
0.0	1.17	1.17	1.17	1.13	1.13	1.13	1.06	1.06	1.06	1.00	1.00	1.00	.94	.94	.94	.92
1.0	.00	.95	.90	.97	.92	.88	.91	.87	.84	.85	.82	.80	.80	.78	.76	.73
2.0	.86	.78	.72	.83	.76	.71	.78	.73	.68	.74	.69	.65	.69	.66	.62	.59
3.0	.75	.66	.59	.73	.65	.58	.68	.62	.56	.64	.59	.54	.61	.56	.52	.49
4.0	.66	.57	.50	.64	.56	.49	.60	.53	.47	.57	.51	.46	.54	.49	.44	.42
5.0	.59	.49	.43	.57	.48	.42	.54	.46	.41	.51	.45	.39	.48	.43	.38	.36
6.0	.53	.43	.37	.51	.43	.36	.49	.41	.35	.46	.39	.34	.44	.38	.33	.31
7.0	.48	.39	.32	.46	.38	.32	.44	.37	.31	.42	.35	.30	.40	.34	.30	.27
8.0	.43	.35	.29	.42	.34	.28	.40	.33	.28	.38	.32	.27	.37	.31	.26	.24
9.0	.40	.31	.26	.39	.31	.25	.37	.30	.25	.35	.29	.24	.34	.28	.24	.22
10.0	.37	.29	.23	.36	.28	.23	.34	.27	.23	.33	.26	.22	.31	.26	.22	.20



C Range: 0 - 360DEG
 C Interval: 30.0DEG
 Test Speed: HIGH
 Temperature:25.3DEG
 Operators:admin
 Test Date:2022-03-16

□ Range: 0 - 180DEG
 □ Interval: 1.0DEG
 Test System:EVERFINE GO-2000B_V1 SYSTEM V2.00.411
 Humidity:65.0%
 Test Distance:8.780m [K=1.0000]
 Remarks:

WEC AND CCEC

Test:U:120.01V I:0.3756A P:40.568W PF:0.8987 Freq:60.00Hz Lamp Flux:2372.75x1 lm		
NAME: ASD lighting Corp	TYPE:	WEIGHT:
SPEC.:ASD-LFC-HN-20D42-AC-5000K	DIM.:	SERIAL No.:
MFR.: ASD lighting Corp	SUR.:0.43*0.39	Shielding Angle:

<input type="checkbox"/> cc	80%	70%	50%	30%	10%	0
<input type="checkbox"/> w	50% 30% 10%	50% 30% 10%	50% 30% 10%	50% 30% 10%	50% 30% 10%	0
<input type="checkbox"/> fc	20%	20%	20%	20%	20%	0
RCR	RCR:Room Cavity Ratio		Wall Exitance Coefficients (WEC)			
0.0						
1.0	.352 .200 .063	.342 .195 .062	.324 .186 .059	.307 .177 .057	.292 .169 .055	
2.0	.316 .173 .053	.307 .169 .052	.291 .162 .050	.276 .155 .048	.262 .148 .047	
3.0	.285 .152 .045	.278 .149 .045	.263 .142 .043	.249 .137 .042	.237 .131 .041	
4.0	.260 .135 .040	.253 .132 .039	.240 .127 .038	.227 .122 .037	.216 .117 .036	
5.0	.238 .121 .035	.232 .119 .035	.220 .114 .034	.209 .110 .033	.198 .106 .032	
6.0	.219 .110 .031	.213 .108 .031	.203 .104 .030	.193 .100 .029	.183 .096 .029	
7.0	.203 .100 .028	.198 .098 .028	.188 .095 .027	.179 .092 .027	.170 .088 .026	
8.0	.189 .092 .026	.184 .091 .026	.175 .087 .025	.167 .084 .024	.159 .082 .024	
9.0	.176 .085 .024	.172 .084 .024	.164 .081 .023	.156 .078 .022	.149 .076 .022	
10.0	.165 .079 .022	.161 .078 .022	.154 .075 .021	.147 .073 .021	.140 .071 .020	

<input type="checkbox"/> cc	80%	70%	50%	30%	10%	0
<input type="checkbox"/> w	50% 30% 10%	50% 30% 10%	50% 30% 10%	50% 30% 10%	50% 30% 10%	0
<input type="checkbox"/> fc	20%	20%	20%	20%	20%	0
RCR	RCR:Room Cavity Ratio		Ceiling Cavity Exitance Coefficients (CCEC)			
0.0	.255 .255 .255	.218 .218 .218	.149 .149 .149	.085 .085 .085	.027 .027 .027	
1.0	.248 .221 .196	.212 .190 .169	.145 .130 .117	.084 .075 .068	.027 .024 .022	
2.0	.241 .197 .161	.206 .170 .139	.141 .117 .097	.082 .068 .057	.026 .022 .018	
3.0	.233 .180 .138	.200 .155 .120	.137 .108 .084	.079 .063 .049	.025 .020 .016	
4.0	.226 .167 .123	.194 .145 .107	.133 .101 .075	.077 .059 .044	.025 .019 .015	
5.0	.218 .157 .112	.187 .136 .098	.129 .095 .069	.075 .056 .041	.024 .018 .014	
6.0	.211 .149 .105	.181 .129 .091	.125 .090 .065	.072 .053 .038	.023 .017 .013	
7.0	.204 .142 .099	.175 .123 .087	.121 .087 .061	.070 .051 .037	.023 .017 .012	
8.0	.197 .137 .095	.170 .119 .083	.117 .083 .059	.068 .049 .035	.022 .016 .012	
9.0	.191 .132 .092	.164 .114 .080	.114 .080 .057	.066 .047 .034	.021 .016 .011	
10.0	.185 .128 .089	.159 .111 .078	.111 .078 .055	.065 .046 .033	.021 .015 .011	

C Range: 0 - 360DEG
 C Interval: 30.0DEG
 Test Speed: HIGH
 Temperature:25.3DEG
 Operators:admin
 Test Date:2022-03-16

Range: 0 - 180DEG
 Interval: 1.0DEG
 Test System:EVERFINE GO-2000B_V1 SYSTEM V2.00.411
 Humidity:65.0%
 Test Distance:8.780m [K=1.0000]
 Remarks:

UGR(Unified Glare Rating) Table

Test:U:120.01V I:0.3756A P:40.568W PF:0.8987 Freq:60.00Hz Lamp Flux:2372.75x1 lm										
NAME: ASD lighting Corp					TYPE:			WEIGHT:		
SPEC.:ASD-LFC-HN-20D42-AC-5000K					DIM.:			SERIAL No.:		
MFR.: ASD lighting Corp					SUR.:0.43*0.39			Shielding Angle:		
ceiling/cavity	0.7	0.7	0.5	0.5	0.3	0.7	0.7	0.5	0.5	0.3
walls	0.5	0.3	0.5	0.3	0.3	0.5	0.3	0.5	0.3	0.3
working plane	0.2	0.2	0.2	0.2	0.2	0.2	0.2	0.2	0.2	0.2
Room dimensions	Viewed crosswise					Viewed endwise				
x = 2H y = 2H	17.2	18.6	17.6	19.0	19.4	17.3	18.7	17.6	19.1	19.4
3H	19.1	20.4	19.5	20.8	21.2	19.1	20.5	19.6	20.9	21.3
4H	20.0	21.2	20.4	21.6	22.1	20.0	21.3	20.5	21.7	22.2
6H	20.8	22.0	21.3	22.4	22.9	20.9	22.1	21.3	22.5	23.0
8H	21.2	22.4	21.7	22.8	23.3	21.3	22.5	21.8	22.9	23.4
12H	21.7	22.8	22.1	23.2	23.7	21.8	22.9	22.2	23.3	23.8
4H 2H	17.9	19.1	18.3	19.6	20.0	17.9	19.2	18.4	19.6	20.0
3H	19.9	21.1	20.4	21.5	22.0	20.0	21.1	20.5	21.6	22.1
4H	21.0	22.0	21.5	22.5	23.0	21.1	22.1	21.6	22.6	23.1
6H	22.0	22.9	22.5	23.4	24.0	22.1	23.0	22.6	23.5	24.1
8H	22.5	23.4	23.0	23.9	24.4	22.6	23.5	23.1	24.0	24.5
12H	23.1	23.8	23.6	24.4	25.0	23.1	23.9	23.7	24.5	25.1
8H 4H	21.4	22.3	21.9	22.8	23.3	21.5	22.3	22.0	22.8	23.4
6H	22.6	23.4	23.2	23.9	24.5	22.7	23.4	23.3	24.0	24.6
8H	23.3	23.9	23.9	24.5	25.1	23.4	24.0	24.0	24.6	25.2
12H	24.0	24.6	24.6	25.2	25.8	24.1	24.7	24.7	25.3	25.9
12H 4H	21.5	22.2	22.0	22.8	23.4	21.5	22.3	22.1	22.8	23.4
6H	22.8	23.4	23.4	24.0	24.6	22.8	23.5	23.4	24.1	24.7
8H	23.5	24.1	24.1	24.7	25.3	23.6	24.2	24.2	24.7	25.4
Variations with the observer position at spacings:										
S = 1.0H	+ 0.1 / - 0.1					+ 0.1 / - 0.1				
1.5H	+ 0.2 / - 0.3					+ 0.2 / - 0.3				
2.0H	+ 0.2 / - 0.4					+ 0.2 / - 0.3				

CIE Pub.117, 2373 lm Total Lamp Luminous Flux Corrected (8log(F/F0) = 3.0)
 Area: 0.1677 m2

C Range: 0 - 360DEG
 C Interval: 30.0DEG
 Test Speed: HIGH
 Temperature:25.3DEG
 Operators:admin
 Test Date:2022-03-16

Range: 0 - 180DEG
 Interval: 1.0DEG
 Test System:EVERFINE GO-2000B_V1 SYSTEM V2.00.411
 Humidity:65.0%
 Test Distance:8.780m [K=1.0000]
 Remarks:

UTILIZATION FACTORS TABLE

Test:U:120.01V I:0.3756A P:40.568W PF:0.8987 Freq:60.00Hz Lamp Flux:2372.75x1 lm		
NAME: ASD lighting Corp	TYPE:	WEIGHT:
SPEC.:ASD-LFC-HN-20D42-AC-5000K	DIM.:	SERIAL No.:
MFR.: ASD lighting Corp	SUR.:0.43*0.39	Shielding Angle:

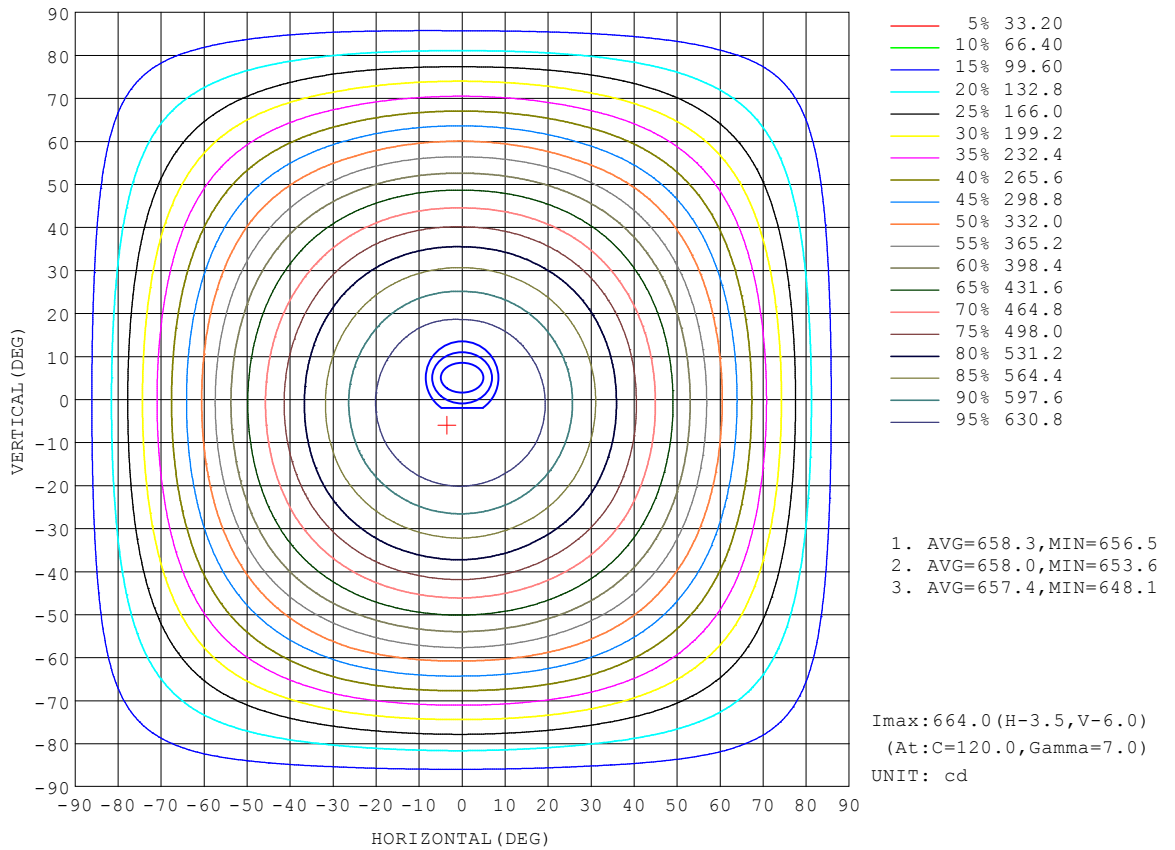
REFLECTANCE										
Ceiling	0.8	0.8	0.8	0.7	0.7	0.7	0.5	0.5	0.5	0
Walls	0.7	0.5	0.3	0.7	0.5	0.3	0.7	0.5	0.3	0
Working plane	0.2	0.2	0.2	0.2	0.2	0.2	0.2	0.2	0.2	0
ROOM INDEX	UTILIZATION FACTORS (PERCENT) $k(RI) \times RCR = 5$									
k = 0.60	52	40	33	52	40	33	50	39	33	26
0.80	62	50	42	61	49	42	59	48	41	34
1.00	70	58	50	69	57	50	66	58	49	41
1.25	77	65	58	75	64	57	72	63	56	47
1.50	82	71	63	80	70	62	76	67	61	52
2.00	89	79	72	87	78	71	82	75	69	59
2.50	94	84	77	91	83	76	86	79	74	63
3.00	97	89	82	94	87	81	89	83	78	67
4.00	102	95	89	98	92	87	93	88	83	72
5.00	104	98	93	101	96	91	95	91	87	75
ROOM INDEX	UF(total)									Direct
According to DIN EN 13032-2 2004			Suspended				SHRNOM = 1.25			

C Range: 0 - 360DEG
 C Interval: 30.0DEG
 Test Speed: HIGH
 Temperature:25.3DEG
 Operators:admin
 Test Date:2022-03-16

Range: 0 - 180DEG
 Interval: 1.0DEG
 Test System:EVERFINE GO-2000B_V1 SYSTEM V2.00.411
 Humidity:65.0%
 Test Distance:8.780m [K=1.0000]
 Remarks:

ISOCANDELA DIAGRAM

Test:U:120.01V I:0.3756A P:40.568W PF:0.8987 Freq:60.00Hz Lamp Flux:2372.75x1 lm		
NAME: ASD lighting Corp	TYPE:	WEIGHT:
SPEC.:ASD-LFC-HN-20D42-AC-5000K	DIM.:	SERIAL No.:
MFR.: ASD lighting Corp	SUR.:0.43*0.39	Shielding Angle:

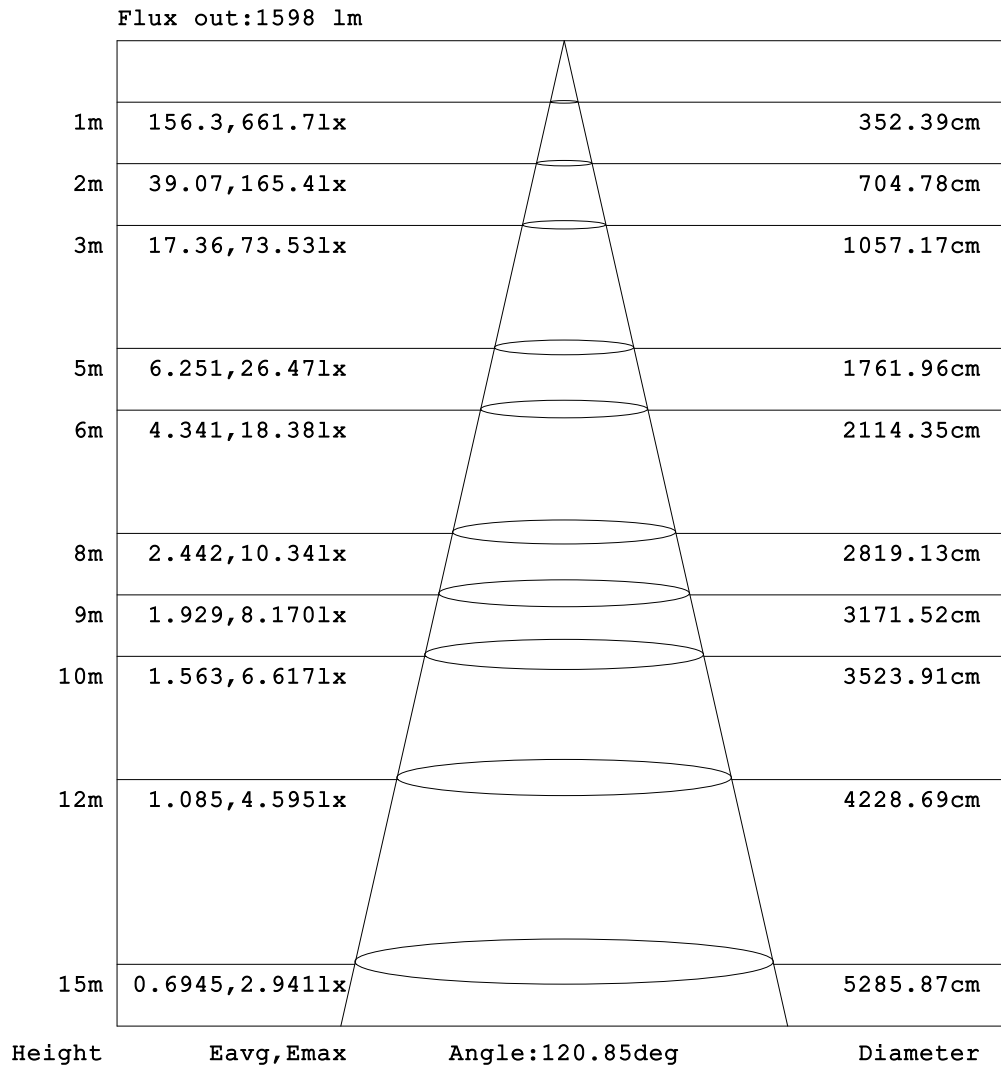


C Range: 0 - 360DEG
 C Interval: 30.0DEG
 Test Speed: HIGH
 Temperature:25.3DEG
 Operators:admin
 Test Date:2022-03-16

Range: 0 - 180DEG
 Interval: 1.0DEG
 Test System:EVERFINE GO-2000B_V1 SYSTEM V2.00.411
 Humidity:65.0%
 Test Distance:8.780m [K=1.0000]
 Remarks:

AAI Figure

Test:U:120.01V I:0.3756A P:40.568W PF:0.8987 Freq:60.00Hz Lamp Flux:2372.75x1 lm		
NAME: ASD lighting Corp	TYPE:	WEIGHT:
SPEC.:ASD-LFC-HN-20D42-AC-5000K	DIM.:	SERIAL No.:
MFR.: ASD lighting Corp	SUR.:0.43*0.39	Shielding Angle:



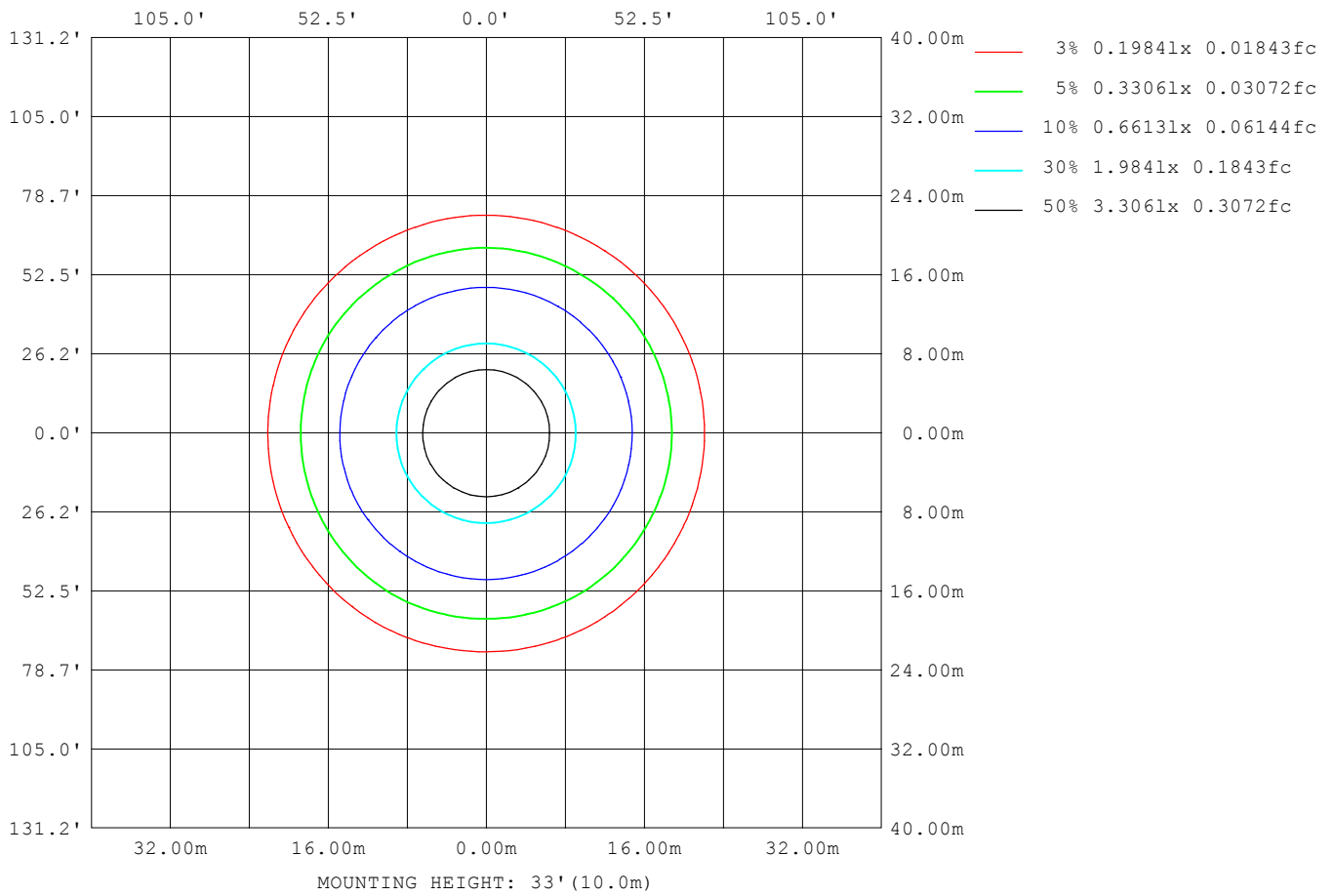
Note:The Curves indicate the illuminated area and the average illumination when the luminaire is at different distance.

C Range: 0 - 360DEG
 C Interval: 30.0DEG
 Test Speed: HIGH
 Temperature:25.3DEG
 Operators:admin
 Test Date:2022-03-16

Range: 0 - 180DEG
 Interval: 1.0DEG
 Test System:EVERFINE GO-2000B_V1 SYSTEM V2.00.411
 Humidity:65.0%
 Test Distance:8.780m [K=1.0000]
 Remarks:

ISOLUX DIAGRAM

Test:U:120.01V I:0.3756A P:40.568W PF:0.8987 Freq:60.00Hz Lamp Flux:2372.75x1 lm		
NAME: ASD lighting Corp	TYPE:	WEIGHT:
SPEC.:ASD-LFC-HN-20D42-AC-5000K	DIM.:	SERIAL No.:
MFR.: ASD lighting Corp	SUR.:0.43*0.39	Shielding Angle:



C Range: 0 - 360DEG
 C Interval: 30.0DEG
 Test Speed: HIGH
 Temperature:25.3DEG
 Operators:admin
 Test Date:2022-03-16

Range: 0 - 180DEG
 Interval: 1.0DEG
 Test System:EVERFINE GO-2000B_V1 SYSTEM V2.00.411
 Humidity:65.0%
 Test Distance:8.780m [K=1.0000]
 Remarks:

LED Avg.L Report

Test:U:120.01V I:0.3756A P:40.568W PF:0.8987 Freq:60.00Hz Lamp Flux:2372.75x1 lm		
NAME: ASD lighting Corp	TYPE:	WEIGHT:
SPEC.:ASD-LFC-HN-20D42-AC-5000K	DIM.:	SERIAL No.:
MFR.: ASD lighting Corp	SUR.:0.43*0.39	Shielding Angle:

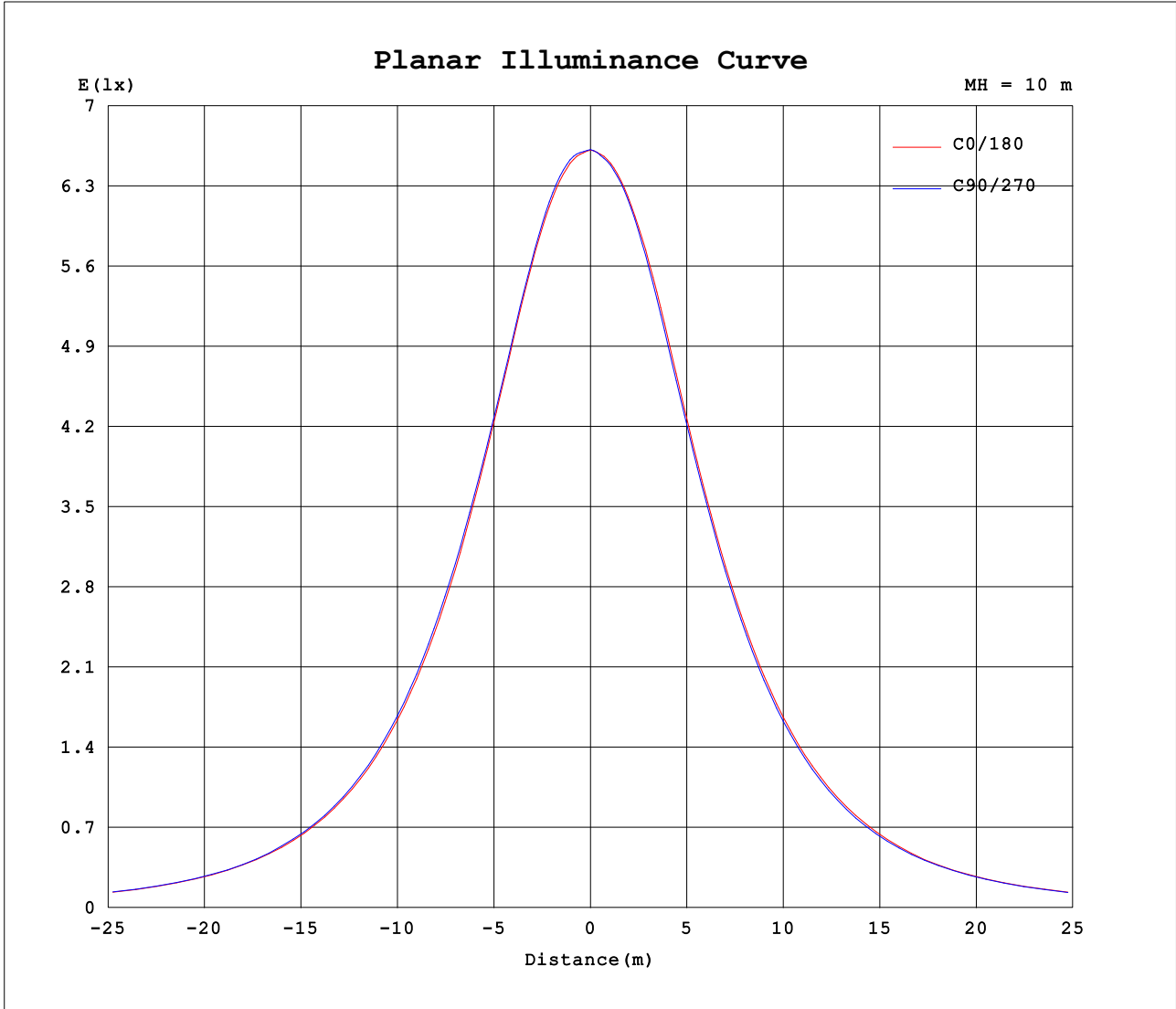
AvgL	cd/m2
L_0~180 (65) av	4086
L_0~180 (75) av	4432
L_0~180 (85) av	7245
L_90~270 (65) av	4072
L_90~270 (75) av	4408
L_90~270 (85) av	7190
L_45 (65) av	4085
L_45 (75) av	4419
L_45 (85) av	7218

Standard: GB/T 29293-2012

C Range: 0 - 360DEG
 C Interval: 30.0DEG
 Test Speed: HIGH
 Temperature:25.3DEG
 Operators:admin
 Test Date:2022-03-16

Range: 0 - 180DEG
 Interval: 1.0DEG
 Test System:EVERFINE GO-2000B_V1 SYSTEM V2.00.411
 Humidity:65.0%
 Test Distance:8.780m [K=1.0000]
 Remarks:

Planar Illuminance Curve



C Range: 0 - 360DEG
 C Interval: 30.0DEG
 Test Speed: HIGH
 Temperature:25.3DEG
 Operators:admin
 Test Date:2022-03-16

Range: 0 - 180DEG
 Interval: 1.0DEG
 Test System:EVERFINE GO-2000B_V1 SYSTEM V2.00.411
 Humidity:65.0%
 Test Distance:8.780m [K=1.0000]
 Remarks:

LUMINOUS DISTRIBUTION INTENSITY DATA

Test:U:120.01V I:0.3756A P:40.568W PF:0.8987 Freq:60.00Hz Lamp Flux:2372.75x1 lm		
NAME: ASD lighting Corp	TYPE:	WEIGHT:
SPEC.:ASD-LFC-HN-20D42-AC-5000K	DIM.:	SERIAL No.:
MFR.: ASD lighting Corp	SUR.:0.43*0.39	Shielding Angle:

Table--1

UNIT: cd

C (DEG) □ (DEG)	0	30	60	90	120	150	180	210	240	270	300	330							
0	661	661	662	662	661	661	661	661	662	662	661	661							
5	661	662	664	663	664	663	661	659	658	659	658	660							
10	657	659	661	661	662	661	658	656	655	655	655	657							
15	647	649	649	651	652	652	649	648	646	644	644	646							
20	628	630	630	632	633	633	631	629	627	624	624	625							
25	601	604	605	606	607	607	606	602	600	598	598	599							
30	571	573	576	578	579	579	576	572	570	568	568	569							
35	537	541	543	547	547	547	543	540	538	534	534	536							
40	502	507	508	512	513	512	508	504	502	499	499	500							
45	464	469	471	474	475	474	471	465	464	461	461	461							
50	424	428	430	433	434	433	430	425	422	420	420	421							
55	382	385	387	390	390	391	387	383	380	377	377	379							
60	337	336	341	340	345	340	337	337	332	332	329	334							
65	289	289	293	292	296	293	290	289	285	285	283	287							
70	240	240	244	243	246	244	242	240	236	237	235	238							
75	192	192	194	194	195	195	193	192	189	189	188	190							
80	143	145	145	147	147	148	146	144	144	142	143	142							
85	105	106	106	107	107	108	107	105	105	103	104	103							
90	77.1	76.3	75.4	75.7	75.7	77.2	77.2	77.4	78.3	77.6	77.5	76.6							
95	61.1	60.0	58.5	58.5	58.8	60.2	60.4	61.5	62.6	62.6	62.6	61.5							
100	52.0	52.0	52.0	52.4	52.8	53.3	52.2	52.2	52.7	52.8	52.8	51.9							
105	47.7	47.4	46.8	46.6	46.7	47.9	47.4	47.8	47.6	47.0	46.6	46.6							
110	42.5	41.3	39.9	39.8	39.6	40.9	41.0	42.0	42.5	42.3	42.0	41.9							
115	36.3	35.4	33.8	33.4	33.1	34.7	34.5	35.8	36.4	36.6	36.2	36.1							
120	27.2	29.2	27.4	26.7	26.9	28.2	25.2	30.1	30.6	30.9	30.4	30.8							
125	22.3	23.6	21.8	21.2	21.7	22.5	20.3	24.1	25.4	25.9	25.6	25.5							
130	18.1	18.5	17.4	17.0	16.9	17.2	15.9	19.1	20.4	21.0	21.0	20.4							
135	14.6	14.6	13.8	12.9	13.1	13.7	12.8	15.1	16.6	17.1	16.9	16.3							
140	12.0	11.5	10.7	10.4	10.4	10.6	10.1	11.6	12.8	13.4	13.5	13.0							
145	10.4	9.96	9.81	9.91	9.83	9.94	9.31	9.73	10.6	10.8	11.0	10.5							
150	10.4	10.1	10.4	10.4	10.4	10.5	9.67	9.45	9.79	9.89	9.87	9.72							
155	11.0	10.8	10.9	11.2	11.1	11.0	10.5	10.3	10.3	10.6	10.4	10.4							
160	11.6	11.5	11.3	11.6	11.6	11.4	11.2	10.8	10.9	11.4	11.2	11.0							
165	12.0	11.7	11.8	12.3	12.0	11.8	11.7	11.5	11.7	12.0	11.7	11.5							
170	11.8	11.7	11.7	12.1	11.9	11.8	11.7	11.7	12.0	12.2	11.9	11.8							
175	11.4	11.2	11.2	11.5	11.4	11.3	11.3	11.2	11.2	11.5	11.3	11.2							
180	11.0	10.9	11.0	11.1	10.9	10.9	11.0	10.9	11.0	11.1	10.9	10.9							

C Range: 0 - 360DEG
 C Interval: 30.0DEG
 Test Speed: HIGH
 Temperature:25.3DEG
 Operators:admin
 Test Date:2022-03-16

□ Range: 0 - 180DEG
 □ Interval: 1.0DEG
 Test System:EVERFINE GO-2000B_V1 SYSTEM V2.00.411
 Humidity:65.0%
 Test Distance:8.780m [K=1.0000]
 Remarks: