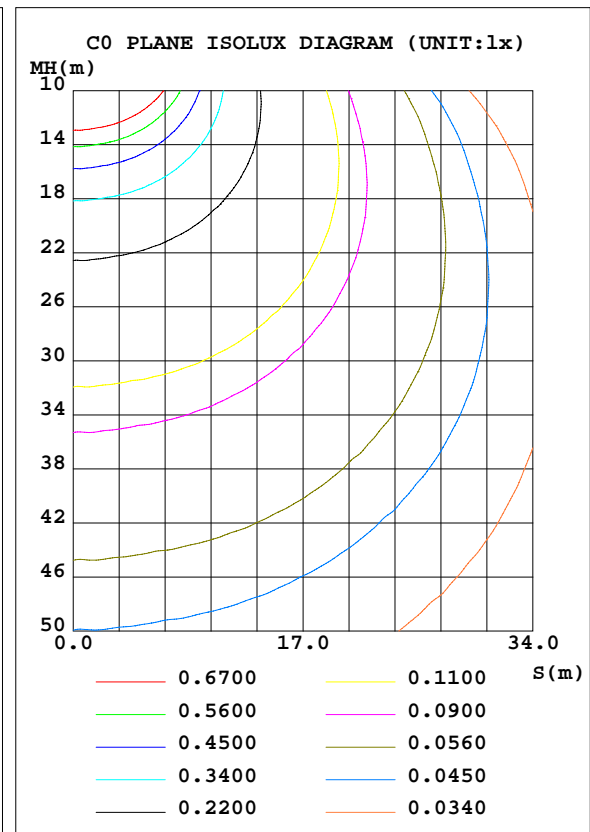
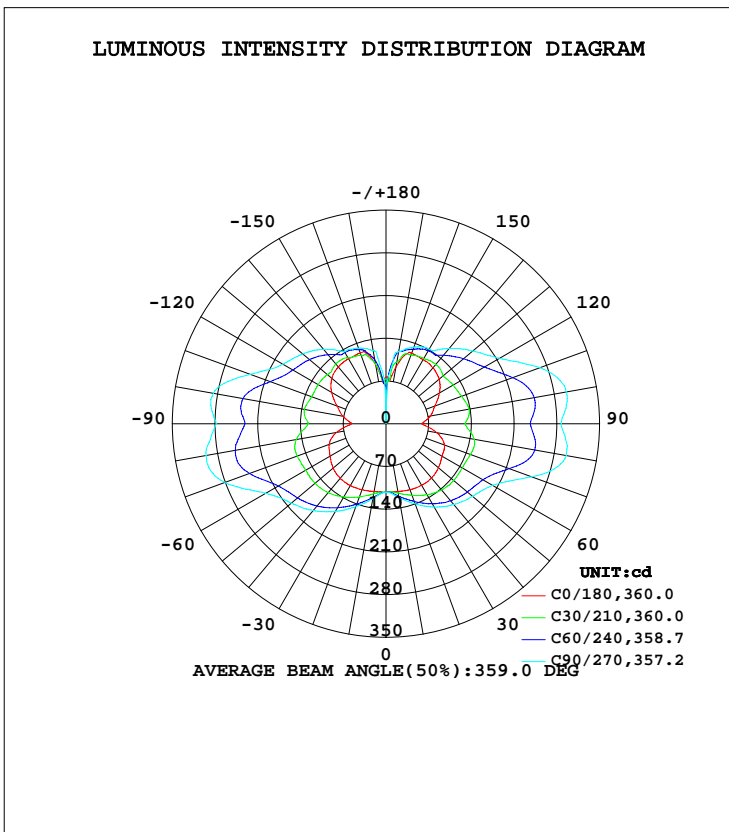


LUMINAIRE PHOTOMETRIC TEST REPORT

Test:U:277.00V I:0.1068A P:26.340W PF:0.8907 Freq:60.00Hz Lamp Flux:2012.49x1 lm		
NAME:	TYPE:LED	WEIGHT:
SPEC.:	DIM.:	SERIAL No.:
MFR.: ASD Lighting corp	SUR.:	Shielding Angle:

DATA OF LAMP		PHOTOMETRIC DATA Eff: 76.40 lm/W			
MODEL	ASD-LWS27-MV-24D24CC-BK	I <sub>max</sub> (cd)	300.4	S/MH(C0/180)	1.59
NOMINAL POWER(W)	24	LOR(%)	100.0	S/MH(C90/270)	2.33
RATED VOLTAGE(V)	120-277	TOTAL FLUX(lm)	2012.5	η UP, DN(C0-180)	24.5,25.5
NOMINAL FLUX(lm)	2012.49	CIE CLASS	DIFFUSE	η UP, DN(C180-360)	23.6,26.5
LAMPS INSIDE	1	η up(%)	48.0	CIBSE SHR NOM	2.00
TEST VOLTAGE(V)	277	η down(%)	52.0	CIBSE SHR MAX	2.00



C Range: 0 - 360DEG  
 C Interval: 15.0DEG  
 Test Speed: HIGH  
 Temperature: 25.0DEG  
 Operators: Alan Wang  
 Test Date: 08 May 2023

γ Range: 0 - 180DEG  
 γ Interval: 1.0DEG  
 Test System: EVERFINE GO-R5000\_V2 SYSTEM V2.00.416  
 Humidity: 43.5%  
 Test Distance: 2.500m [K=1.0390]  
 Remarks:

## ZONAL FLUX DIAGRAM

## ZONAL FLUX DIAGRAM:

$\gamma$	C0	C45	C90	C135	C180	C225	C270	C315	$\gamma$	$\Phi$ zone	$\Phi$ total	%lum,lamp
10	112.8	117.9	122.8	117.3	112.8	119.8	124.9	118.3	0- 10	11.00	11.00	0.55,0.55
20	114.9	130.5	139.5	129.6	115.1	134.4	144.6	132.1	10- 20	35.35	46.35	2.3,2.3
30	116.9	143.7	157.4	142.1	116.9	150.1	165.7	146.1	20- 30	63.38	109.7	5.45,5.45
40	116.2	154.5	172.9	152.3	116.6	163.0	185.8	157.7	30- 40	93.25	203.0	10.1,10.1
50	112.2	160.6	185.2	158.3	113.1	171.7	202.4	165.3	40- 50	121.5	324.5	16.1,16.1
60	106.2	164.4	201.7	160.4	105.9	178.6	227.7	169.9	50- 60	145.7	470.2	23.4,23.4
70	101.9	178.6	254.4	170.0	99.00	194.3	281.1	181.9	60- 70	173.2	643.4	32,32
80	84.55	194.8	299.9	180.6	82.50	198.3	299.4	182.4	70- 80	202.6	846.0	42,42
90	58.98	182.2	287.0	165.7	56.05	178.5	278.3	162.2	80- 90	200.0	1046	52,52
100	74.02	190.2	300.0	176.7	71.66	184.5	287.1	168.0	90-100	196.2	1242	61.7,61.7
110	85.29	174.7	268.5	165.2	85.54	165.8	237.0	150.9	100-110	186.8	1429	71,71
120	101.3	157.3	214.8	152.6	102.8	153.8	195.3	142.7	110-120	156.5	1586	78.8,78.8
130	113.7	145.0	185.7	141.5	116.0	146.6	178.0	136.8	120-130	132.5	1718	85.4,85.4
140	119.8	132.5	161.0	133.0	121.7	133.8	159.4	126.9	130-140	108.9	1827	90.8,90.8
150	122.0	133.1	141.2	131.8	122.9	132.4	136.4	129.5	140-150	83.30	1910	94.9,94.9
160	123.1	125.8	133.6	122.2	123.5	121.7	131.7	125.4	150-160	59.30	1970	97.9,97.9
170	94.43	112.5	119.8	105.8	98.16	100.0	121.8	117.8	160-170	34.09	2004	99.6,99.6
180	76.91	67.40	0	61.57	76.00	69.40	32.45	59.32	170-180	8.860	2012	100,100
DEG	LUMINOUS INTENSITY:cd									UNIT:lm		

Conical surface Flux(90deg): 260.45 lm

%lum = 12.9%

%lamp = 12.9%

Conical surface Flux(120deg): 470.24 lm

%lum = 23.4%

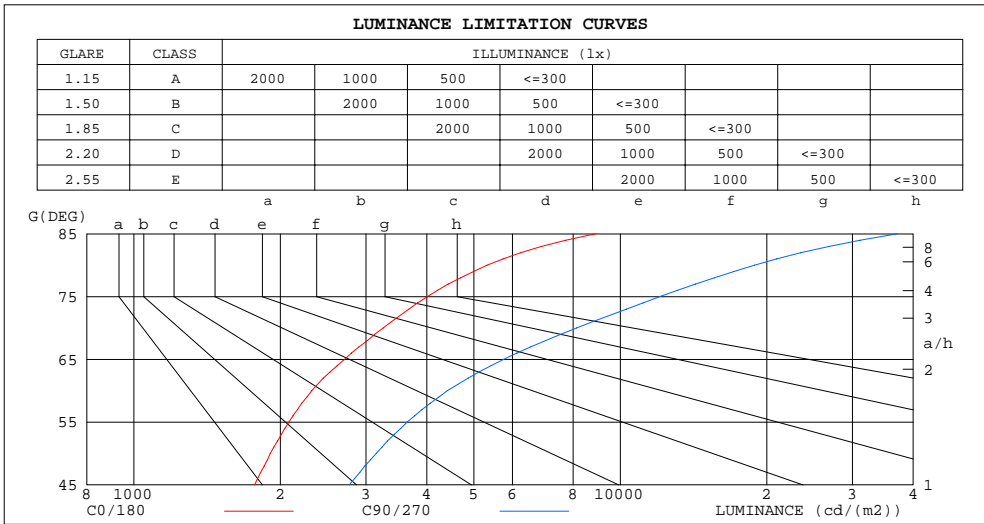
%lamp = 23.4%

C Range: 0 - 360DEG  
 C Interval: 15.0DEG  
 Test Speed: HIGH  
 Temperature: 25.0DEG  
 Operators: Alan Wang  
 Test Date: 08 May 2023

$\gamma$  Range: 0 - 180DEG  
 $\gamma$  Interval: 1.0DEG  
 Test System: EVERFINE GO-R5000\_V2 SYSTEM V2.00.416  
 Humidity: 43.5%  
 Test Distance: 2.500m [K=1.0390]  
 Remarks:

LUMINANCE LIMITATION CURVES

Test:U:277.00V I:0.1068A P:26.340W PF:0.8907 Freq:60.00Hz Lamp Flux:2012.49x1 lm		
NAME:	TYPE:LED	WEIGHT:
SPEC.:	DIM.:	SERIAL No.:
MFR.: ASD Lighting corp	SUR.:	Shielding Angle:



LUMINANCE cd/(m2)		
G(DEG)	C0/180	C90/270
85	8877	37033
80	5321	18874
75	4014	12058
70	3257	8130
65	2710	5754
60	2321	4409
55	2085	3646
50	1907	3149
45	1771	2771

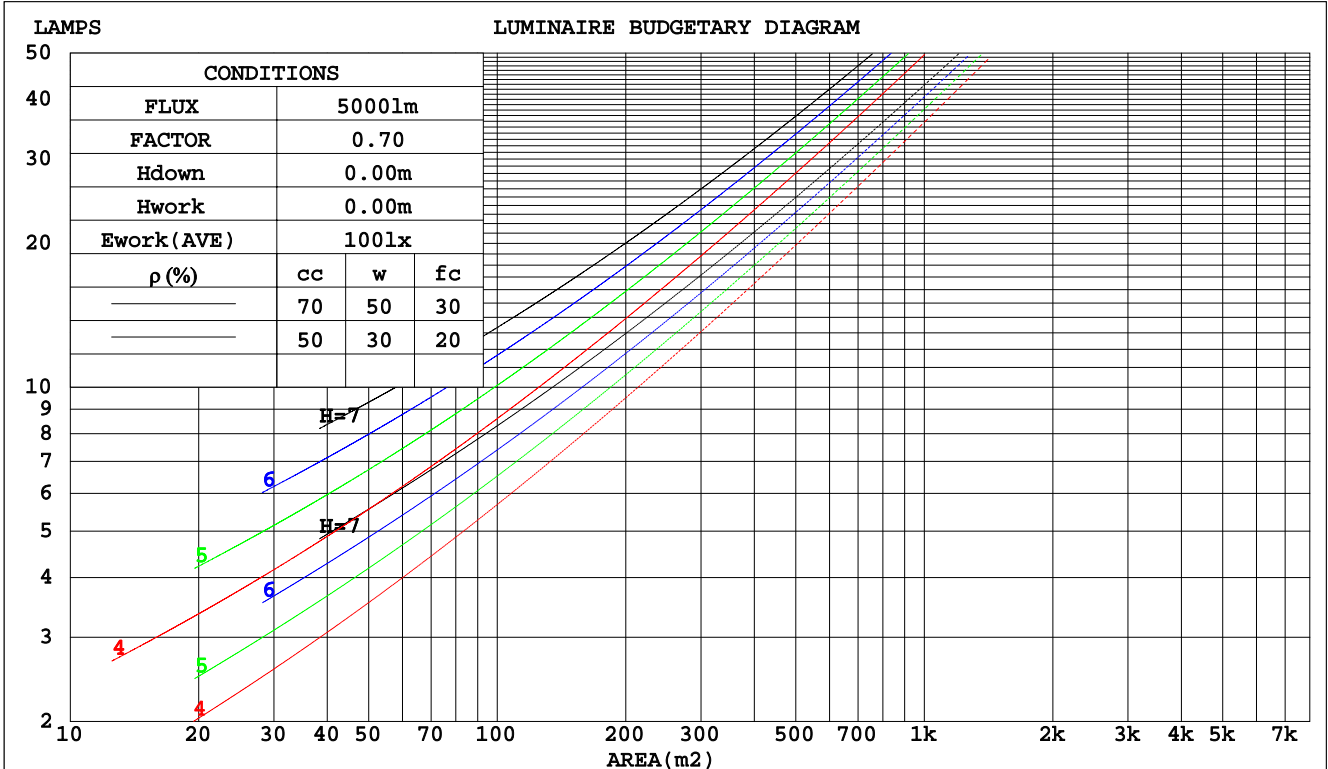
C Range: 0 - 360DEG  
 C Interval: 15.0DEG  
 Test Speed: HIGH  
 Temperature: 25.0DEG  
 Operators: Alan Wang  
 Test Date: 08 May 2023

$\gamma$  Range: 0 - 180DEG  
 $\gamma$  Interval: 1.0DEG  
 Test System: EVERFINE GO-R5000\_V2 SYSTEM V2.00.416  
 Humidity: 43.5%  
 Test Distance: 2.500m [K=1.0390]  
 Remarks:

CU AND LUMINAIRE BUDGETARY ESTIMATE DIAGRAM

Test:U:277.00V I:0.1068A P:26.340W PF:0.8907 Freq:60.00Hz Lamp Flux:2012.49x1 lm		
NAME:	TYPE:LED	WEIGHT:
SPEC.:	DIM.:	SERIAL No.:
MFR.: ASD Lighting corp	SUR.:	Shielding Angle:

pcc	80%			70%			50%			30%			10%			0
	50%	30%	10%	50%	30%	10%	50%	30%	10%	50%	30%	10%	50%	30%	10%	0
pw																0
pfc	20%			20%			20%			20%			20%			0
RCR	RCR:Room Cavity Ratio						Coefficients of Utilization(CU)									
0.0	1.08	1.08	1.08	.00	.00	.00	.84	.84	.84	.71	.71	.71	.58	.58	.58	.52
1.0	.87	.81	.76	.80	.75	.70	.67	.63	.59	.54	.51	.49	.43	.41	.39	.33
2.0	.73	.65	.58	.67	.60	.54	.56	.50	.45	.45	.41	.37	.35	.32	.29	.24
3.0	.63	.53	.46	.57	.49	.43	.47	.41	.36	.38	.33	.29	.30	.26	.23	.18
4.0	.55	.45	.38	.50	.41	.35	.41	.35	.29	.33	.28	.24	.26	.22	.18	.15
5.0	.48	.38	.31	.44	.35	.29	.36	.30	.24	.29	.24	.20	.23	.19	.15	.12
6.0	.43	.33	.27	.39	.31	.25	.32	.26	.21	.26	.21	.17	.20	.16	.13	.10
7.0	.38	.29	.23	.35	.27	.21	.29	.23	.18	.24	.18	.14	.18	.14	.11	.08
8.0	.34	.26	.20	.32	.24	.18	.26	.20	.15	.21	.16	.13	.17	.13	.10	.07
9.0	.31	.23	.17	.29	.21	.16	.24	.18	.14	.20	.15	.11	.15	.11	.09	.06
10.0	.29	.21	.15	.26	.19	.14	.22	.16	.12	.18	.13	.10	.14	.10	.08	.06



C Range: 0 - 360DEG  
 C Interval: 15.0DEG  
 Test Speed: HIGH  
 Temperature: 25.0DEG  
 Operators: Alan Wang  
 Test Date: 08 May 2023

γ Range: 0 - 180DEG  
 γ Interval: 1.0DEG  
 Test System: EVERFINE GO-R5000\_V2 SYSTEM V2.00.416  
 Humidity: 43.5%  
 Test Distance: 2.500m [K=1.0390]  
 Remarks:

WEC AND CCEC

Test:U:277.00V I:0.1068A P:26.340W PF:0.8907 Freq:60.00Hz Lamp Flux:2012.49x1 lm		
NAME:	TYPE:LED	WEIGHT:
SPEC.:	DIM.:	SERIAL No.:
MFR.: ASD Lighting corp	SUR.:	Shielding Angle:

ρcc	80%			70%			50%			30%			10%			0
ρw	50%	30%	10%	50%	30%	10%	50%	30%	10%	50%	30%	10%	50%	30%	10%	0
ρfc	20%			20%			20%			20%			20%			0
RCR	RCR:Room Cavity Ratio						Wall Exitance Coefficients(WEC)									
0.0																
1.0	.418	.238	.075	.396	.226	.072	.355	.204	.065	.317	.183	.059	.283	.164	.053	
2.0	.348	.191	.058	.328	.181	.056	.290	.161	.050	.256	.144	.045	.224	.127	.040	
3.0	.302	.161	.048	.284	.152	.046	.250	.135	.041	.218	.120	.037	.189	.105	.032	
4.0	.269	.140	.041	.252	.132	.039	.221	.117	.035	.191	.103	.031	.164	.089	.027	
5.0	.242	.123	.036	.227	.116	.034	.198	.103	.030	.171	.090	.027	.146	.078	.023	
6.0	.220	.110	.032	.206	.104	.030	.180	.092	.027	.155	.080	.024	.131	.069	.021	
7.0	.202	.100	.028	.189	.094	.027	.165	.083	.024	.141	.073	.021	.120	.062	.018	
8.0	.187	.091	.026	.175	.086	.024	.152	.076	.022	.130	.066	.019	.110	.057	.016	
9.0	.173	.084	.023	.162	.079	.022	.141	.070	.020	.121	.061	.017	.102	.052	.015	
10.0	.162	.078	.022	.152	.073	.020	.132	.064	.018	.113	.056	.016	.095	.048	.014	

ρcc	80%			70%			50%			30%			10%			0
ρw	50%	30%	10%	50%	30%	10%	50%	30%	10%	50%	30%	10%	50%	30%	10%	0
ρfc	20%			20%			20%			20%			20%			0
RCR	RCR:Room Cavity Ratio						Ceiling Cavity Exitance Coefficients(CCEC)									
0.0	.556	.556	.556	.476	.476	.476	.325	.325	.325	.186	.186	.186	.060	.060	.060	
1.0	.557	.524	.495	.476	.450	.426	.326	.309	.294	.188	.179	.171	.060	.058	.055	
2.0	.551	.503	.463	.472	.433	.400	.323	.300	.279	.187	.174	.164	.060	.056	.053	
3.0	.544	.488	.443	.467	.421	.384	.320	.292	.269	.185	.171	.159	.059	.055	.052	
4.0	.537	.476	.430	.461	.412	.374	.317	.287	.263	.183	.168	.156	.059	.055	.051	
5.0	.529	.467	.422	.455	.404	.367	.313	.283	.259	.181	.166	.154	.058	.054	.051	
6.0	.522	.460	.416	.449	.398	.362	.310	.279	.256	.180	.164	.152	.058	.054	.050	
7.0	.515	.454	.411	.443	.394	.358	.306	.276	.254	.178	.163	.151	.057	.053	.050	
8.0	.509	.449	.408	.438	.389	.356	.303	.273	.252	.176	.161	.150	.057	.053	.050	
9.0	.502	.444	.405	.433	.386	.353	.300	.271	.251	.175	.160	.150	.057	.053	.050	
10.0	.497	.440	.403	.428	.382	.352	.297	.269	.250	.173	.159	.149	.056	.052	.049	

C Range: 0 - 360DEG  
 C Interval: 15.0DEG  
 Test Speed: HIGH  
 Temperature: 25.0DEG  
 Operators: Alan Wang  
 Test Date: 08 May 2023

γ Range: 0 - 180DEG  
 γ Interval: 1.0DEG  
 Test System: EVERFINE GO-R5000\_V2 SYSTEM V2.00.416  
 Humidity: 43.5%  
 Test Distance: 2.500m [K=1.0390]  
 Remarks:

UGR(Unified Glare Rating) Table

Test:U:277.00V I:0.1068A P:26.340W PF:0.8907 Freq:60.00Hz Lamp Flux:2012.49x1 lm										
NAME:					TYPE:LED			WEIGHT:		
SPEC.:					DIM.:			SERIAL No.:		
MFR.: ASD Lighting corp					SUR.:			Shielding Angle:		
ceiling/cavity	0.7	0.7	0.5	0.5	0.3	0.7	0.7	0.5	0.5	0.3
walls	0.5	0.3	0.5	0.3	0.3	0.5	0.3	0.5	0.3	0.3
working plane	0.2	0.2	0.2	0.2	0.2	0.2	0.2	0.2	0.2	0.2
Room dimensions	Viewed crosswise					Viewed endwise				
x = 2H y = 2H	12.0	13.2	12.9	14.0	15.1	14.7	15.8	15.5	16.7	17.8
3H	14.8	15.8	15.7	16.7	17.9	18.9	19.9	19.8	20.8	22.0
4H	16.3	17.2	17.1	18.1	19.3	21.4	22.4	22.3	23.3	24.5
6H	17.8	18.7	18.7	19.6	20.8	24.1	25.0	25.0	25.9	27.1
8H	18.5	19.4	19.4	20.3	21.5	25.4	26.3	26.3	27.2	28.4
12H	19.3	20.1	20.2	21.1	22.3	26.8	27.7	27.8	28.6	29.8
4H 2H	13.7	14.7	14.6	15.6	16.8	15.4	16.4	16.3	17.3	18.5
3H	16.6	17.4	17.5	18.4	19.6	19.8	20.7	20.7	21.6	22.8
4H	18.2	18.9	19.1	19.9	21.1	22.5	23.3	23.4	24.2	25.5
6H	19.8	20.5	20.7	21.4	22.7	25.3	26.0	26.3	27.0	28.2
8H	20.6	21.2	21.5	22.2	23.4	26.8	27.4	27.7	28.4	29.7
12H	21.4	22.0	22.4	23.0	24.3	28.3	28.9	29.3	29.9	31.2
8H 4H	19.8	20.4	20.7	21.4	22.7	22.9	23.6	23.9	24.5	25.8
6H	21.6	22.2	22.6	23.2	24.5	26.0	26.6	27.0	27.6	28.9
8H	22.5	23.0	23.5	24.0	25.4	27.7	28.2	28.7	29.2	30.5
12H	23.5	23.9	24.5	25.0	26.3	29.5	30.0	30.5	31.0	32.3
12H 4H	20.4	21.0	21.4	22.0	23.3	23.0	23.6	23.9	24.5	25.8
6H	22.4	22.9	23.4	23.9	25.2	26.2	26.7	27.2	27.7	29.0
8H	23.5	23.9	24.5	24.9	26.3	27.9	28.4	28.9	29.4	30.7
Variations with the observer position at spacings:										
S = 1.0H	+ 0.1 / - 0.1					+ 0.1 / - 0.1				
1.5H	+ 0.2 / - 0.2					+ 0.2 / - 0.3				
2.0H	+ 0.3 / - 0.4					+ 0.3 / - 0.4				

CIE Pub.117, 2012 lm Total Lamp Luminous Flux Corrected (8log(F/F0) = 2.4)  
 Area: 0.0915 m2

C Range: 0 - 360DEG  
 C Interval: 15.0DEG  
 Test Speed: HIGH  
 Temperature: 25.0DEG  
 Operators: Alan Wang  
 Test Date: 08 May 2023

γ Range: 0 - 180DEG  
 γ Interval: 1.0DEG  
 Test System: EVERFINE GO-R5000\_V2 SYSTEM V2.00.416  
 Humidity: 43.5%  
 Test Distance: 2.500m [K=1.0390]  
 Remarks:

## UTILIZATION FACTORS TABLE

Test:U:277.00V I:0.1068A P:26.340W PF:0.8907 Freq:60.00Hz Lamp Flux:2012.49x1 lm		
NAME:	TYPE:LED	WEIGHT:
SPEC.:	DIM.:	SERIAL No.:
MFR.: ASD Lighting corp	SUR.:	Shielding Angle:

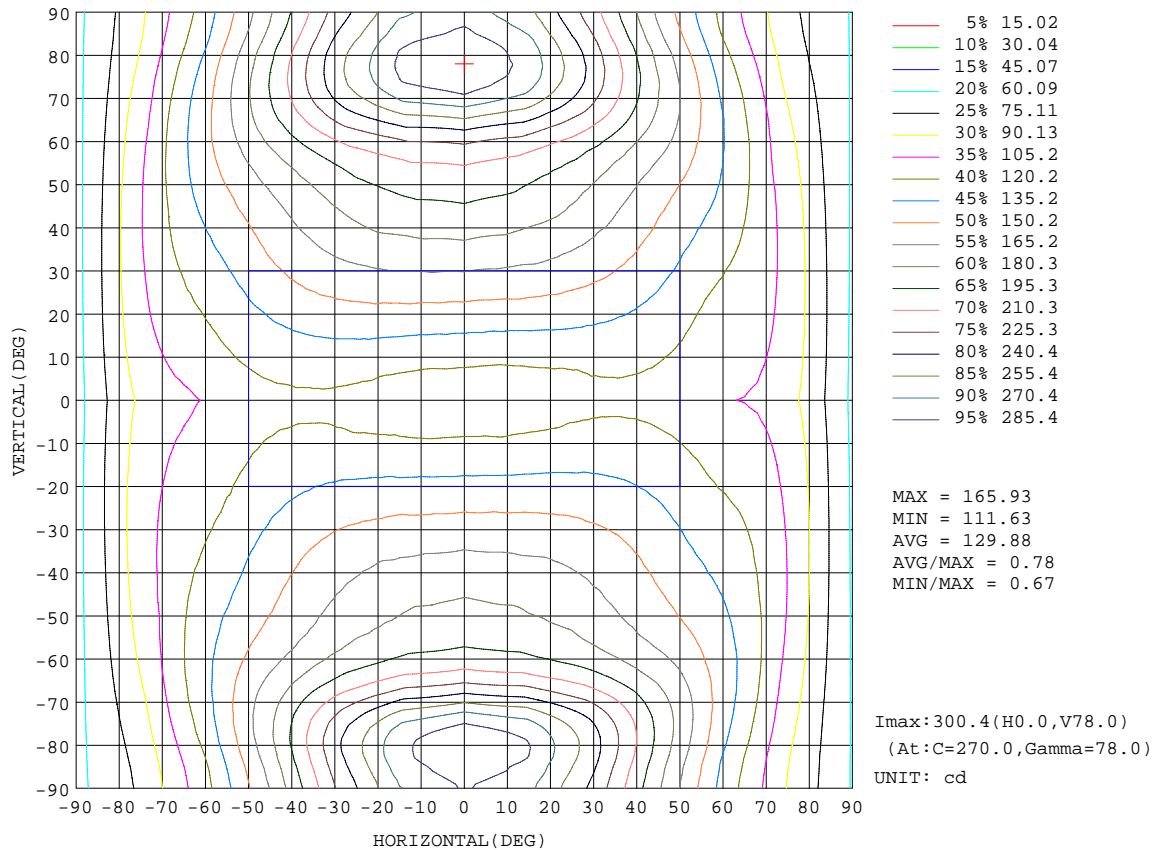
REFLECTANCE										
Ceiling	0.8	0.8	0.8	0.7	0.7	0.7	0.5	0.5	0.5	0
Walls	0.7	0.5	0.3	0.7	0.5	0.3	0.7	0.5	0.3	0
Working plane	0.2	0.2	0.2	0.2	0.2	0.2	0.2	0.2	0.2	0
ROOM INDEX	UTILIZATION FACTORS(PERCENT) $k(RI) \times RCR = 5$									
k = 0.60	36	24	16	34	23	16	31	21	15	7
0.80	45	31	22	42	29	21	37	26	20	10
1.00	52	38	28	48	35	27	42	34	24	13
1.25	59	44	35	55	42	33	47	37	29	16
1.50	64	50	40	59	47	38	51	41	34	18
2.00	72	59	49	66	55	46	57	47	40	22
2.50	77	65	55	71	60	52	60	52	45	25
3.00	81	70	61	75	65	57	63	56	49	28
4.00	86	76	68	79	71	64	67	61	55	32
5.00	90	81	74	83	75	69	70	64	59	34
ROOM INDEX	UF(total)									Direct
According to DIN EN 13032-2 2004			Suspended				SHRNOM = 1.25			

C Range: 0 - 360DEG  
 C Interval: 15.0DEG  
 Test Speed: HIGH  
 Temperature: 25.0DEG  
 Operators: Alan Wang  
 Test Date: 08 May 2023

$\gamma$  Range: 0 - 180DEG  
 $\gamma$  Interval: 1.0DEG  
 Test System: EVERFINE GO-R5000\_V2 SYSTEM V2.00.416  
 Humidity: 43.5%  
 Test Distance: 2.500m [K=1.0390]  
 Remarks:

ISOCANDELA DIAGRAM

Test:U:277.00V I:0.1068A P:26.340W PF:0.8907 Freq:60.00Hz Lamp Flux:2012.49x1 lm		
NAME:	TYPE:LED	WEIGHT:
SPEC.:	DIM.:	SERIAL No.:
MFR.: ASD Lighting corp	SUR.:	Shielding Angle:



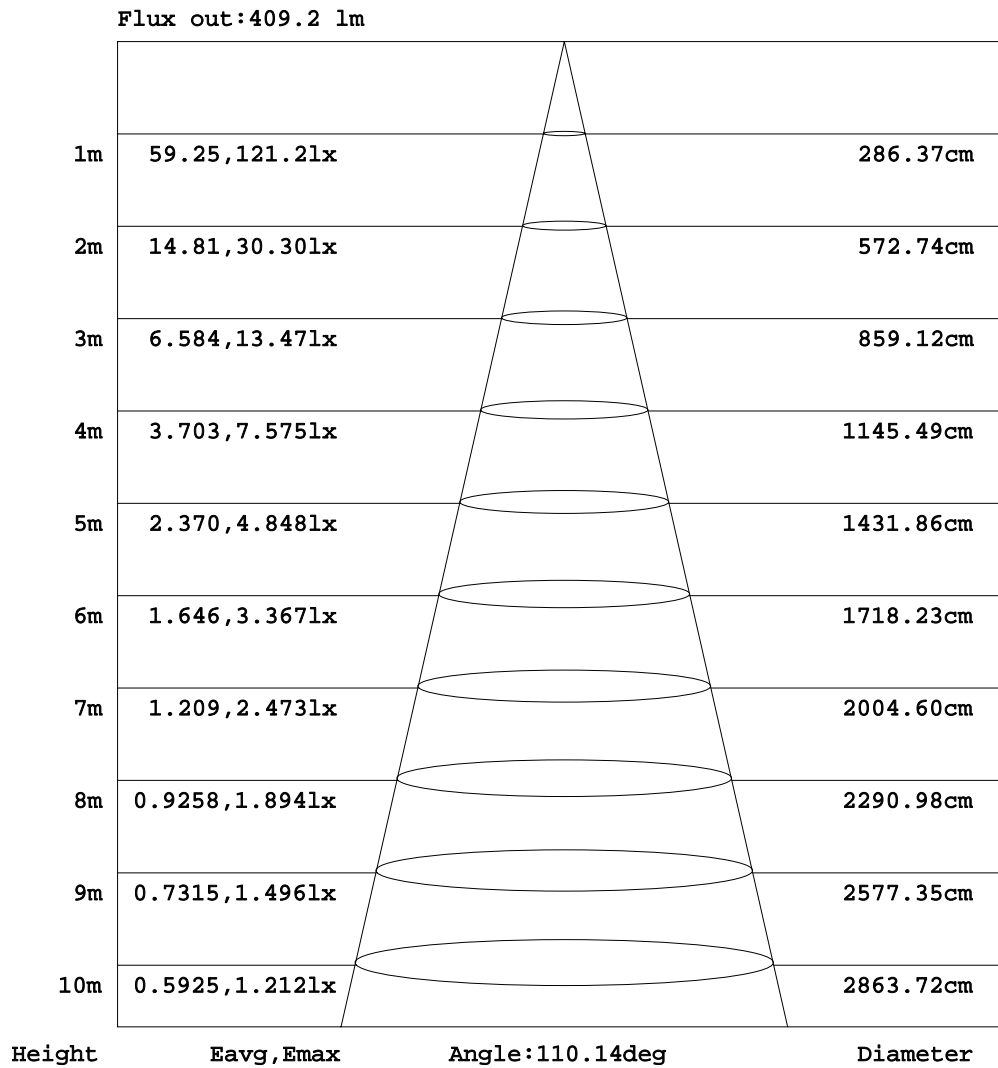
C Range: 0 - 360DEG  
 C Interval: 15.0DEG  
 Test Speed: HIGH  
 Temperature: 25.0DEG  
 Operators: Alan Wang  
 Test Date: 08 May 2023

γ Range: 0 - 180DEG  
 γ Interval: 1.0DEG  
 Test System: EVERFINE GO-R5000\_V2 SYSTEM V2.00.416  
 Humidity: 43.5%  
 Test Distance: 2.500m [K=1.0390]  
 Remarks:



AAI Figure

Test:U:277.00V I:0.1068A P:26.340W PF:0.8907 Freq:60.00Hz Lamp Flux:2012.49x1 lm		
NAME:	TYPE:LED	WEIGHT:
SPEC.:	DIM.:	SERIAL No.:
MFR.: ASD Lighting corp	SUR.:	Shielding Angle:



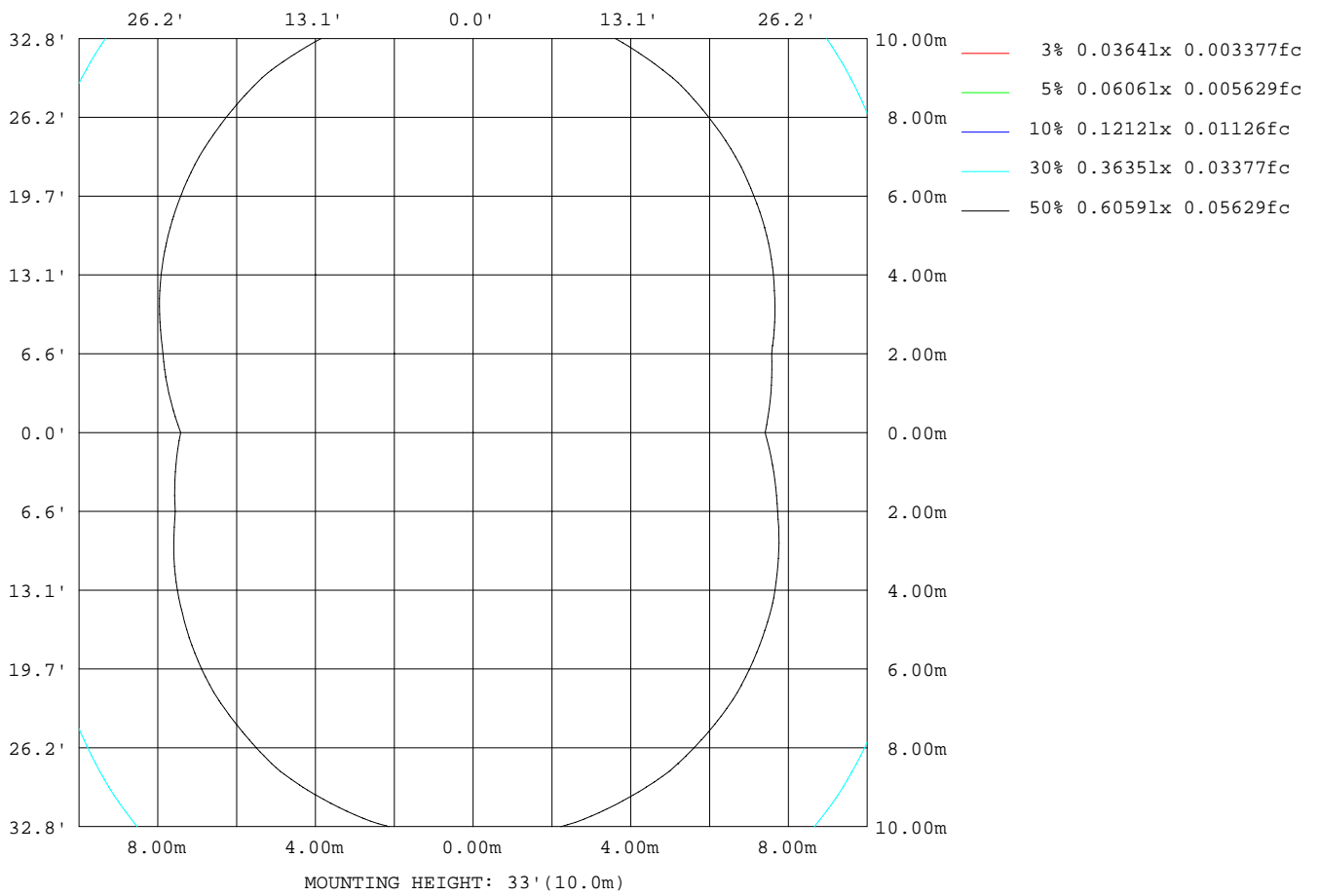
Note:The Curves indicate the illuminated area and the average illumination when the luminaire is at different distance.

C Range: 0 - 360DEG  
 C Interval: 15.0DEG  
 Test Speed: HIGH  
 Temperature: 25.0DEG  
 Operators: Alan Wang  
 Test Date: 08 May 2023

γ Range: 0 - 180DEG  
 γ Interval: 1.0DEG  
 Test System: EVERFINE GO-R5000\_V2 SYSTEM V2.00.416  
 Humidity: 43.5%  
 Test Distance: 2.500m [K=1.0390]  
 Remarks:

ISOLUX DIAGRAM

Test:U:277.00V I:0.1068A P:26.340W PF:0.8907 Freq:60.00Hz Lamp Flux:2012.49x1 lm		
NAME:	TYPE:LED	WEIGHT:
SPEC.:	DIM.:	SERIAL No.:
MFR.: ASD Lighting corp	SUR.:	Shielding Angle:



C Range: 0 - 360DEG  
 C Interval: 15.0DEG  
 Test Speed: HIGH  
 Temperature: 25.0DEG  
 Operators: Alan Wang  
 Test Date: 08 May 2023

γ Range: 0 - 180DEG  
 γ Interval: 1.0DEG  
 Test System: EVERFINE GO-R5000\_V2 SYSTEM V2.00.416  
 Humidity: 43.5%  
 Test Distance: 2.500m [K=1.0390]  
 Remarks:

## LED Avg.L Report

Test:U:277.00V I:0.1068A P:26.340W PF:0.8907 Freq:60.00Hz Lamp Flux:2012.49x1 lm		
NAME:	TYPE:LED	WEIGHT:
SPEC.:	DIM.:	SERIAL No.:
MFR.: ASD Lighting corp	SUR.:	Shielding Angle:

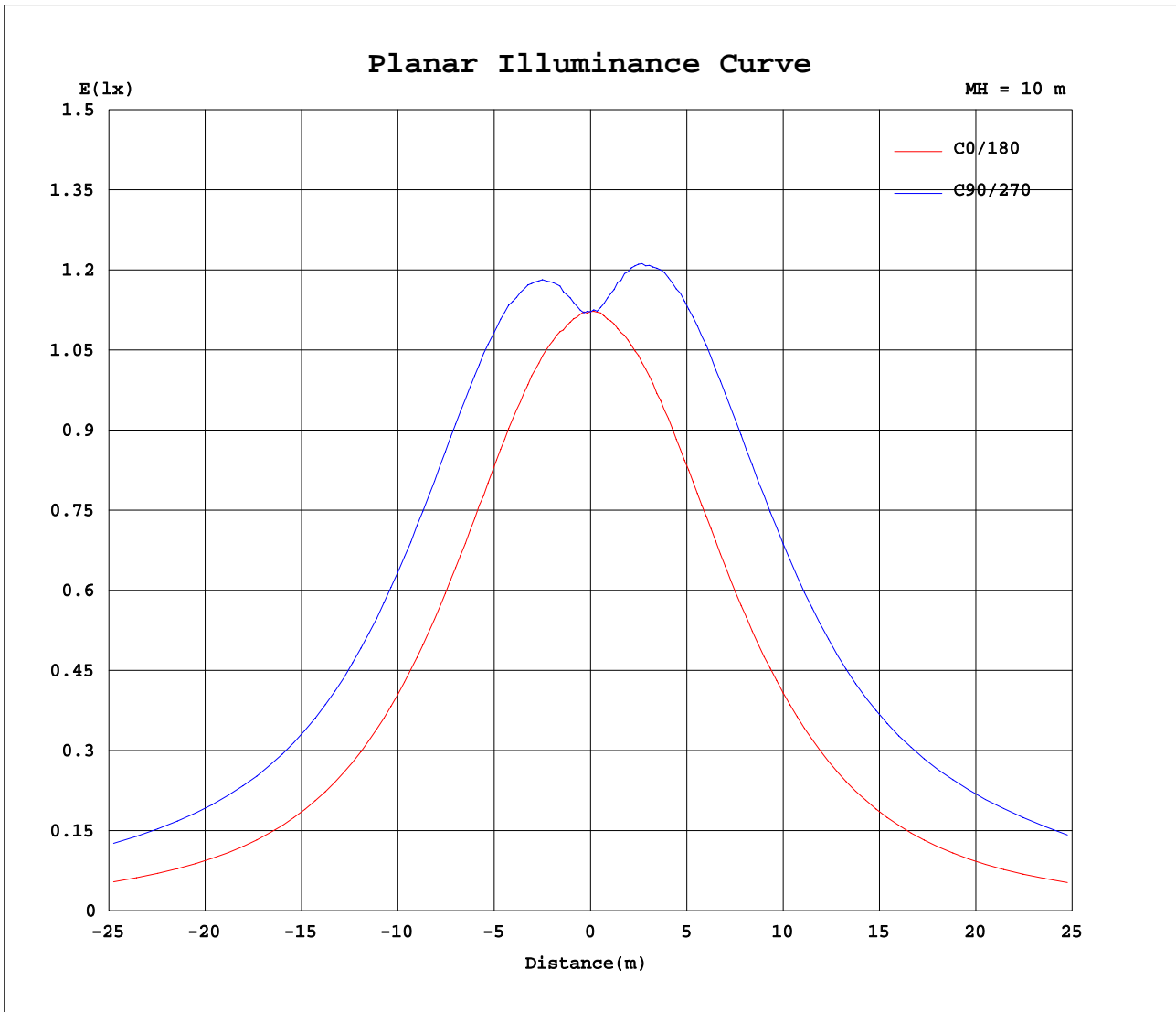
AvgL	cd/m2
L_0~180(65)av	2682
L_0~180(75)av	3964
L_0~180(85)av	8744
L_90~270(65)av	6160
L_90~270(75)av	12313
L_90~270(85)av	36614
L_45(65)av	4477
L_45(75)av	7969
L_45(85)av	22691

Standard: GB/T 29293-2012

C Range: 0 - 360DEG  
C Interval: 15.0DEG  
Test Speed: HIGH  
Temperature: 25.0DEG  
Operators: Alan Wang  
Test Date: 08 May 2023

$\gamma$  Range: 0 - 180DEG  
 $\gamma$  Interval: 1.0DEG  
Test System: EVERFINE GO-R5000\_V2 SYSTEM V2.00.416  
Humidity: 43.5%  
Test Distance: 2.500m [K=1.0390]  
Remarks:

Planar Illuminance Curve



C Range: 0 - 360DEG  
 C Interval: 15.0DEG  
 Test Speed: HIGH  
 Temperature: 25.0DEG  
 Operators: Alan Wang  
 Test Date: 08 May 2023

$\gamma$  Range: 0 - 180DEG  
 $\gamma$  Interval: 1.0DEG  
 Test System: EVERFINE GO-R5000\_V2 SYSTEM V2.00.416  
 Humidity: 43.5%  
 Test Distance: 2.500m [K=1.0390]  
 Remarks:

LUMINOUS DISTRIBUTION INTENSITY DATA

Test:U:277.00V I:0.1068A P:26.340W PF:0.8907 Freq:60.00Hz Lamp Flux:2012.49x1 lm		
NAME:	TYPE:LED	WEIGHT:
SPEC.:	DIM.:	SERIAL No.:
MFR.: ASD Lighting corp	SUR.:	Shielding Angle:

Table--1

UNIT: cd

C(DEG) γ (DEG)	0	15	30	45	60	75	90	105	120	135	150	165	180	195	210	225	240	255	270
0	112	112	112	112	112	112	112	112	112	112	112	112	112	112	112	112	112	112	112
5	112	112	112	113	114	115	115	115	114	113	112	112	112	112	113	114	115	116	116
10	113	113	115	118	121	122	123	122	120	117	114	112	113	114	117	120	123	124	125
15	114	116	120	124	128	130	131	130	127	123	119	115	114	117	122	127	131	134	134
20	115	118	125	131	135	138	140	138	135	130	123	117	115	120	127	134	140	144	145
25	116	122	130	137	144	147	149	147	143	136	128	119	116	123	133	142	149	154	155
30	117	124	134	144	151	156	157	155	151	142	132	121	117	126	138	150	159	164	166
35	117	126	139	150	159	164	166	163	157	147	136	123	117	129	143	157	168	174	176
40	116	128	142	155	165	170	173	170	163	152	139	124	117	130	148	163	176	183	186
45	115	128	144	158	170	177	179	176	169	156	141	124	115	131	150	168	183	192	194
50	112	127	145	161	174	182	185	182	172	158	141	123	113	131	152	172	189	199	202
55	109	126	145	162	178	187	191	187	176	160	141	121	110	129	152	175	195	208	212
60	106	124	145	164	184	197	202	196	181	160	140	119	106	127	152	179	204	222	228
65	105	124	145	169	195	215	223	213	191	164	139	117	103	126	153	185	219	245	254
70	102	123	148	179	215	244	254	241	208	170	139	114	99.0	124	155	194	238	271	281
75	95.1	119	149	190	237	273	286	269	227	178	139	109	92.7	119	155	200	251	287	298
80	84.5	111	147	195	248	286	300	282	237	181	134	101	82.5	111	149	198	251	287	299
85	70.8	99.2	138	189	244	281	295	278	233	174	124	88.1	68.7	98.6	138	188	241	278	289
90	59.0	89.2	130	182	236	274	287	270	225	166	115	77.4	56.0	87.3	127	179	231	268	278
95	65.8	95.5	136	189	244	283	296	278	232	173	122	84.3	63.2	93.8	133	184	238	277	287
100	74.0	98.5	138	190	247	286	300	282	236	177	126	89.0	71.7	97.9	136	185	238	277	287
105	79.7	97.9	136	185	238	278	291	274	228	173	125	89.6	78.6	98.4	133	176	224	258	268
110	85.3	97.0	132	175	221	255	268	252	213	165	124	89.9	85.5	98.5	130	166	202	230	237
115	93.3	97.4	129	165	201	229	240	226	196	158	123	97.0	94.2	101	129	158	186	205	211
120	101	104	127	157	186	207	215	205	182	153	122	105	103	104	129	154	176	191	195
125	108	109	125	151	175	192	198	190	172	147	121	111	110	112	128	150	170	183	186
130	114	113	122	145	166	180	186	179	163	142	122	116	116	117	125	147	164	175	178
135	117	115	126	138	156	170	174	168	154	135	125	119	119	120	125	141	157	167	169
140	120	116	127	133	147	157	161	157	145	133	126	120	122	121	128	134	148	157	159
145	121	117	126	134	138	145	148	144	138	133	126	122	123	120	128	132	138	146	148
150	122	116	124	133	138	141	141	141	138	132	124	121	123	119	125	132	135	136	136
155	122	117	122	129	135	138	139	138	135	128	120	120	123	120	122	130	133	135	135
160	123	115	120	126	130	133	134	133	129	122	121	118	123	122	119	122	129	132	132
165	115	109	118	121	125	127	127	125	122	121	117	113	119	119	115	119	121	127	128
170	94.4	99.7	103	112	120	120	120	120	114	106	97.8	96.9	98.2	98.3	99.5	100	106	119	122
175	69.6	69.4	74.6	90.1	95.0	94.4	89.3	88.3	79.2	73.7	71.5	72.0	73.2	73.4	73.2	73.9	76.9	86.1	91.0
180	76.9	74.2	66.7	67.4	42.3	30.6	0.00	40.1	52.8	61.6	71.1	75.2	76.0	76.1	73.7	69.4	63.1	55.4	32.4

C Range: 0 - 360DEG  
 C Interval: 15.0DEG  
 Test Speed: HIGH  
 Temperature: 25.0DEG  
 Operators: Alan Wang  
 Test Date: 08 May 2023

γ Range: 0 - 180DEG  
 γ Interval: 1.0DEG  
 Test System: EVERFINE GO-R5000\_V2 SYSTEM V2.00.416  
 Humidity: 43.5%  
 Test Distance: 2.500m [K=1.0390]  
 Remarks:

LUMINOUS DISTRIBUTION INTENSITY DATA

Test:U:277.00V I:0.1068A P:26.340W PF:0.8907 Freq:60.00Hz Lamp Flux:2012.49x1 lm		
NAME:	TYPE:LED	WEIGHT:
SPEC.:	DIM.:	SERIAL No.:
MFR.: ASD Lighting corp	SUR.:	Shielding Angle:

Table--2

UNIT: cd

C(DEG) γ (DEG)	285	300	315	330	345														
0	112	112	112	112	112														
5	116	115	113	112	112														
10	123	122	118	115	112														
15	133	130	125	120	115														
20	143	138	132	125	117														
25	152	147	139	130	120														
30	162	156	146	134	122														
35	173	165	152	138	123														
40	181	172	158	141	124														
45	189	179	162	143	125														
50	197	183	165	145	124														
55	205	189	167	145	122														
60	218	197	170	144	120														
65	239	209	174	144	119														
70	264	226	182	145	117														
75	279	236	186	144	112														
80	279	235	182	137	103														
85	270	226	172	126	90.2														
90	259	216	162	115	78.8														
95	268	223	168	121	85.2														
100	267	222	168	123	88.9														
105	249	207	160	120	88.8														
110	221	188	151	118	88.4														
115	198	175	145	117	92.9														
120	186	167	143	117	100														
125	178	162	140	117	107														
130	171	156	137	116	112														
135	163	149	132	121	114														
140	154	142	127	123	116														
145	143	134	129	123	116														
150	135	134	129	121	116														
155	135	133	129	122	116														
160	131	130	125	121	118														
165	127	125	123	119	113														
170	122	121	118	109	107														
175	94.5	99.9	95.2	93.0	72.9														
180	29.4	37.1	59.3	66.0	69.5														

C Range: 0 - 360DEG  
 C Interval: 15.0DEG  
 Test Speed: HIGH  
 Temperature: 25.0DEG  
 Operators: Alan Wang  
 Test Date: 08 May 2023

γ Range: 0 - 180DEG  
 γ Interval: 1.0DEG  
 Test System: EVERFINE GO-R5000\_V2 SYSTEM V2.00.416  
 Humidity: 43.5%  
 Test Distance: 2.500m [K=1.0390]  
 Remarks: