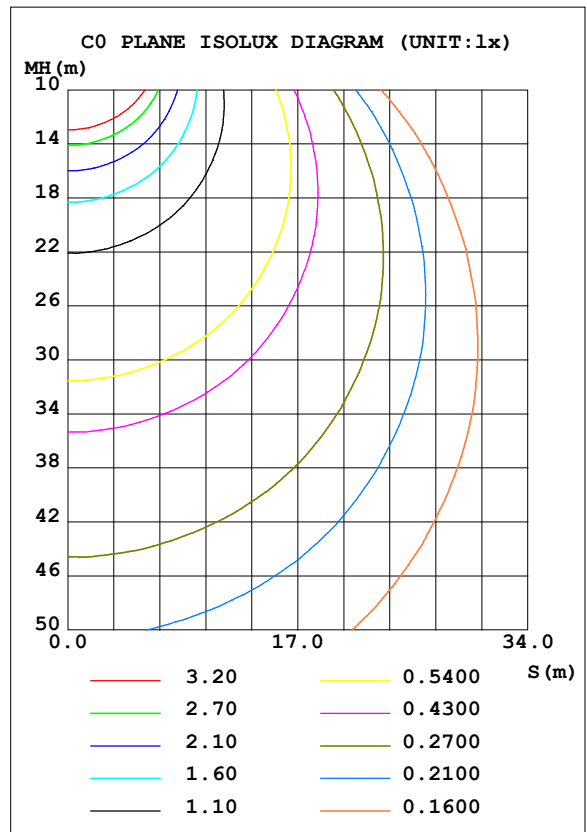
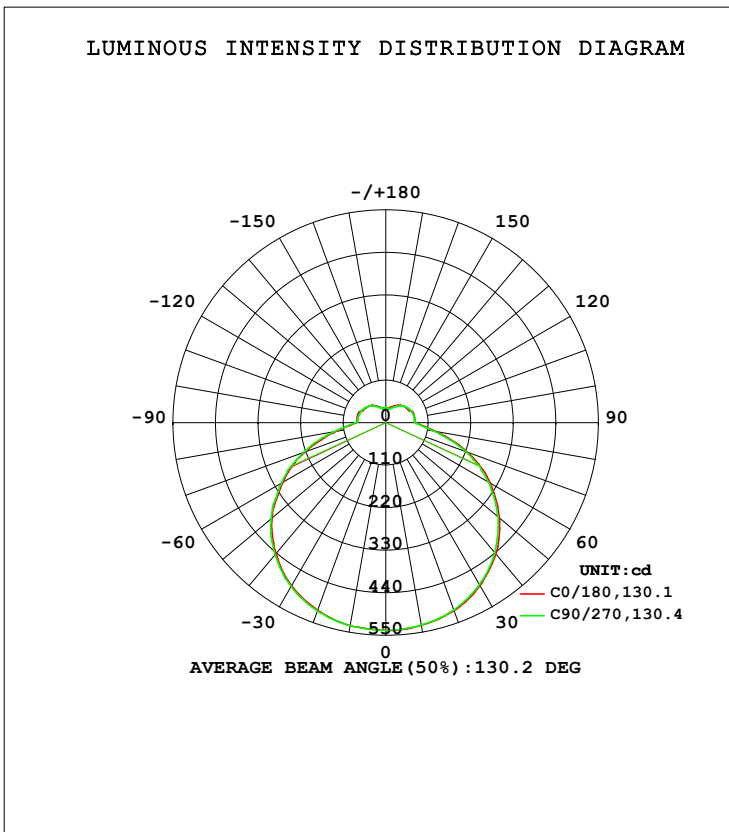


LUMINAIRE PHOTOMETRIC TEST REPORT

Test:U:120.22V I:0.3838A P:41.783W PF:0.9046 Freq:0Hz Lamp Flux:2315.63x1 lm		
NAME: ADS lighting Corp	TYPE:	WEIGHT:
SPEC.:ASD-LFC-AF-20D42-AC-3000K	DIM.:	SERIAL No.:
MFR.: ADS lighting Corp	SUR.:0.485*0.485	Shielding Angle:

DATA OF LAMP		PHOTOMETRIC DATA			
MODEL	ASD-LFC-AF-20D42-AC	Imax (cd)	538.1	S/MH (C0/180)	1.35
NOMINAL POWER (W)	--	LOR (%)	100.0	S/MH (C90/270)	1.36
RATED VOLTAGE (V)	--	TOTAL FLUX (lm)	2315.6	<input type="checkbox"/> UP, DN (C0-180)	8.7, 41.0
NOMINAL FLUX (lm)	2315.63	CIE CLASS	SEMI-D.	<input type="checkbox"/> UP, DN (C180-360)	8.6, 41.6
LAMPS INSIDE	1	<input type="checkbox"/> up (%)	17.4	CIBSE SHR NOM	1.50
TEST VOLTAGE (V)	--	<input type="checkbox"/> down (%)	82.6	CIBSE SHR MAX	1.55



C Range: 0 - 360DEG
 C Interval: 22.5DEG
 Test Speed: HIGH
 Temperature: 25.3DEG
 Operators: admin
 Test Date: 2022-03-16

Range: 0 - 180DEG
 Interval: 1.0DEG
 Test System: EVERFINE GO-2000B_V1 SYSTEM V2.00.411
 Humidity: 65.0%
 Test Distance: 8.780m [K=1.0000]
 Remarks:

ZONAL FLUX DIAGRAM

ZONAL FLUX DIAGRAM:

mm	C0	C45	C90	C135	C180	C225	C270	C315	mm	□ zone	□ total	%lum,lamp
10	532.2	532.0	531.2	530.5	532.5	532.4	532.9	531.6	0- 10	51.01	51.01	2.2,2.2
20	517.2	515.1	515.0	515.1	515.9	517.8	518.0	518.1	10- 20	148.7	199.7	8.62,8.62
30	486.7	485.6	484.1	483.8	487.0	487.5	489.5	488.2	20- 30	232.3	432.0	18.7,18.7
40	442.7	439.7	439.2	439.5	442.6	444.1	445.6	445.6	30- 40	291.9	723.9	31.3,31.3
50	383.7	380.5	379.4	378.2	383.3	385.2	387.1	386.1	40- 50	319.7	1044	45.1,45.1
60	311.8	309.3	305.3	305.9	306.2	312.9	311.1	310.8	50- 60	310.2	1354	58.5,58.5
70	225.2	224.8	221.8	218.7	221.3	228.3	226.7	225.9	60- 70	265.4	1619	69.9,69.9
80	130.9	128.5	125.4	126.3	131.0	136.0	136.5	134.1	70- 80	186.7	1806	78,78
90	77.07	76.83	76.12	75.66	76.73	77.45	77.19	76.64	80- 90	107.6	1913	82.6,82.6
100	75.98	75.85	75.70	74.88	75.37	73.19	73.40	73.19	90-100	81.54	1995	86.2,86.2
110	75.92	74.10	73.89	72.91	75.02	71.33	71.55	71.75	100-110	78.49	2074	89.5,89.5
120	67.49	70.33	70.75	69.54	66.40	68.64	68.71	68.71	110-120	70.52	2144	92.6,92.6
130	64.45	61.57	65.19	61.38	63.15	61.39	63.90	61.66	120-130	58.80	2203	95.1,95.1
140	58.76	53.71	56.80	53.35	58.47	53.60	57.94	53.58	130-140	45.53	2248	97.1,97.1
150	51.06	47.44	48.02	46.32	50.17	47.28	48.78	46.43	140-150	32.15	2281	98.5,98.5
160	43.50	40.21	39.57	39.62	42.46	41.00	40.76	40.54	150-160	20.59	2301	99.4,99.4
170	38.70	38.87	37.28	38.73	38.16	39.31	37.30	37.56	160-170	10.92	2312	99.8,99.8
180	39.00	36.83	40.04	37.26	39.01	36.83	40.09	37.24	170-180	3.593	2316	100,100
DEG	LUMINOUS INTENSITY:cd									UNIT:lm		

Conical surface Flux(90deg): 882.54 lm

%lum = 38.1%

%lamp = 38.1%

Conical surface Flux(120deg): 1353.9 lm

%lum = 58.5%

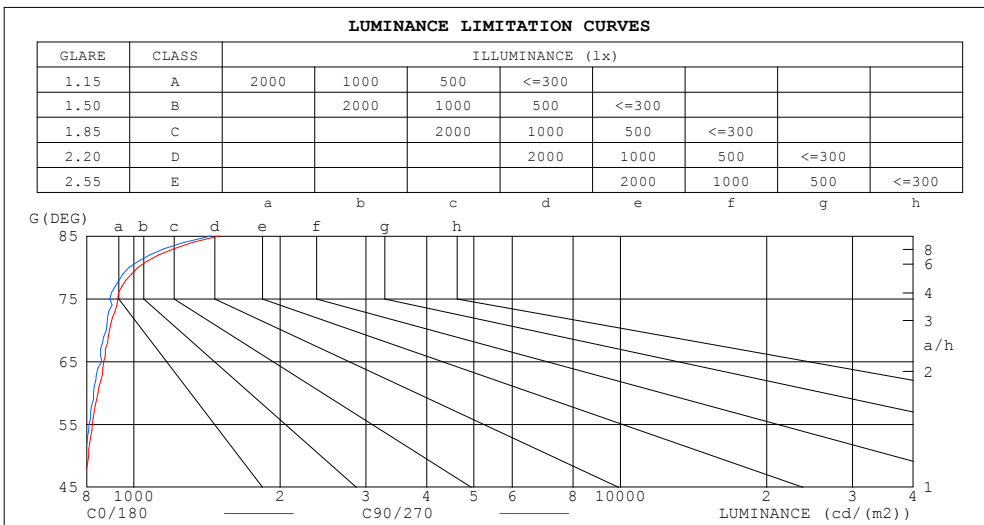
%lamp = 58.5%

C Range: 0 - 360DEG
 C Interval: 22.5DEG
 Test Speed: HIGH
 Temperature:25.3DEG
 Operators:admin
 Test Date:2022-03-16

□ Range: 0 - 180DEG
 □ Interval: 1.0DEG
 Test System:EVERFINE GO-2000B_V1 SYSTEM V2.00.411
 Humidity:65.0%
 Test Distance:8.780m [K=1.0000]
 Remarks:

LUMINANCE LIMITATION CURVES

Test:U:120.22V I:0.3838A P:41.783W PF:0.9046 Freq:0Hz Lamp Flux:2315.63x1 lm		
NAME: ADS lighting Corp	TYPE:	WEIGHT:
SPEC.:ASD-LFC-AF-20D42-AC-3000K	DIM.:	SERIAL No.:
MFR.: ADS lighting Corp	SUR.:0.485*0.485	Shielding Angle:



LUMINANCE cd/(m2)		
G (DEG)	C0/180	C90/270
85	1497	1442
80	1020	978
75	927	893
70	891	878
65	867	860
60	844	826
55	821	810
50	808	799
45	794	784

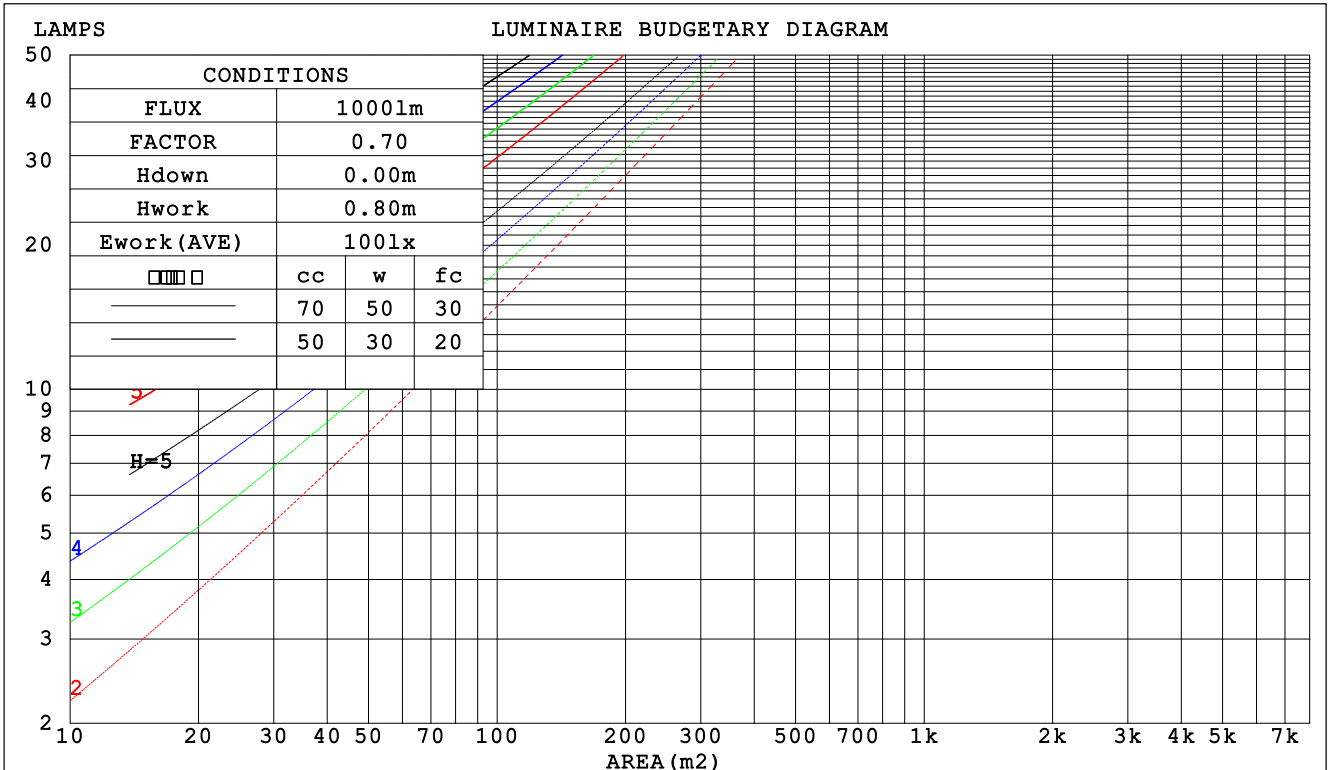
C Range: 0 - 360DEG
 C Interval: 22.5DEG
 Test Speed: HIGH
 Temperature:25.3DEG
 Operators:admin
 Test Date:2022-03-16

Range: 0 - 180DEG
 Interval: 1.0DEG
 Test System:EVERFINE GO-2000B_V1 SYSTEM V2.00.411
 Humidity:65.0%
 Test Distance:8.780m [K=1.0000]
 Remarks:

CU AND LUMINAIRE BUDGETARY ESTIMATE DIAGRAM

Test:U:120.22V I:0.3838A P:41.783W PF:0.9046 Freq:0Hz Lamp Flux:2315.63x1 lm		
NAME: ADS lighting Corp	TYPE:	WEIGHT:
SPEC.:ASD-LFC-AF-20D42-AC-3000K	DIM.:	SERIAL No.:
MFR.: ADS lighting Corp	SUR.:0.485*0.485	Shielding Angle:

□cc	80%			70%			50%			30%			10%			0
□w	50%	30%	10%	50%	30%	10%	50%	30%	10%	50%	30%	10%	50%	30%	10%	0
□fc	20%			20%			20%			20%			20%			0
RCR	RCR:Room Cavity Ratio						Coefficients of Utilization(CU)									
0.0	1.15	1.15	1.15	1.10	1.10	1.10	1.01	1.01	1.01	.93	.93	.93	.86	.86	.86	.83
1.0	.98	.93	.88	.94	.89	.85	.86	.83	.79	.79	.77	.74	.73	.71	.69	.65
2.0	.84	.77	.70	.81	.74	.68	.74	.69	.64	.68	.64	.60	.63	.59	.56	.53
3.0	.73	.64	.58	.70	.62	.56	.65	.58	.53	.60	.54	.50	.55	.50	.47	.44
4.0	.64	.55	.48	.62	.53	.47	.57	.50	.44	.53	.47	.42	.49	.44	.40	.37
5.0	.57	.48	.41	.55	.46	.40	.51	.43	.38	.47	.41	.36	.43	.38	.34	.31
6.0	.51	.42	.35	.49	.41	.35	.46	.38	.33	.42	.36	.31	.39	.34	.30	.27
7.0	.46	.37	.31	.44	.36	.30	.41	.34	.29	.38	.32	.27	.36	.30	.26	.24
8.0	.42	.33	.27	.40	.32	.27	.38	.31	.26	.35	.29	.24	.33	.27	.23	.21
9.0	.38	.30	.24	.37	.29	.24	.35	.28	.23	.32	.26	.22	.30	.25	.21	.19
10.0	.35	.27	.22	.34	.27	.21	.32	.25	.21	.30	.24	.20	.28	.23	.19	.17



C Range: 0 - 360DEG
 C Interval: 22.5DEG
 Test Speed: HIGH
 Temperature:25.3DEG
 Operators:admin
 Test Date:2022-03-16

□ Range: 0 - 180DEG
 □ Interval: 1.0DEG
 Test System:EVERFINE GO-2000B_V1 SYSTEM V2.00.411
 Humidity:65.0%
 Test Distance:8.780m [K=1.0000]
 Remarks:

WEC AND CCEC

Test:U:120.22V I:0.3838A P:41.783W PF:0.9046 Freq:0Hz Lamp Flux:2315.63x1 lm		
NAME: ADS lighting Corp	TYPE:	WEIGHT:
SPEC.:ASD-LFC-AF-20D42-AC-3000K	DIM.:	SERIAL No.:
MFR.: ADS lighting Corp	SUR.:0.485*0.485	Shielding Angle:

<input type="checkbox"/> cc	80%	70%	50%	30%	10%	0
<input type="checkbox"/> w	50% 30% 10%	50% 30% 10%	50% 30% 10%	50% 30% 10%	50% 30% 10%	0
<input type="checkbox"/> fc	20%	20%	20%	20%	20%	0
RCR	RCR:Room Cavity Ratio		Wall Exitance Coefficients (WEC)			
0.0						
1.0	.349 .199 .063	.337 .192 .061	.313 .180 .057	.292 .168 .054	.272 .158 .051	
2.0	.313 .172 .053	.302 .166 .051	.281 .156 .049	.262 .147 .046	.244 .138 .043	
3.0	.283 .151 .045	.273 .146 .044	.254 .138 .042	.236 .130 .040	.220 .122 .038	
4.0	.258 .134 .039	.249 .130 .038	.231 .123 .037	.215 .116 .035	.200 .109 .033	
5.0	.236 .120 .035	.228 .117 .034	.212 .110 .032	.197 .104 .031	.184 .098 .030	
6.0	.217 .109 .031	.210 .106 .030	.195 .100 .029	.182 .095 .028	.170 .089 .027	
7.0	.201 .099 .028	.194 .097 .028	.181 .092 .026	.169 .087 .025	.157 .082 .024	
8.0	.187 .091 .026	.181 .089 .025	.169 .084 .024	.158 .080 .023	.147 .075 .022	
9.0	.175 .085 .024	.169 .082 .023	.158 .078 .022	.147 .074 .021	.138 .070 .020	
10.0	.164 .079 .022	.158 .077 .021	.148 .073 .020	.139 .069 .020	.129 .065 .019	

<input type="checkbox"/> cc	80%	70%	50%	30%	10%	0
<input type="checkbox"/> w	50% 30% 10%	50% 30% 10%	50% 30% 10%	50% 30% 10%	50% 30% 10%	0
<input type="checkbox"/> fc	20%	20%	20%	20%	20%	0
RCR	RCR:Room Cavity Ratio		Ceiling Cavity Exitance Coefficients (CCEC)			
0.0	.323 .323 .323	.276 .276 .276	.188 .188 .188	.108 .108 .108	.035 .035 .035	
1.0	.316 .289 .265	.271 .248 .228	.185 .171 .158	.107 .099 .092	.034 .032 .030	
2.0	.309 .266 .230	.265 .229 .199	.182 .158 .139	.105 .092 .081	.034 .030 .026	
3.0	.302 .249 .207	.259 .215 .180	.178 .149 .126	.103 .087 .074	.033 .028 .024	
4.0	.295 .237 .193	.253 .205 .167	.174 .143 .118	.101 .084 .070	.032 .027 .023	
5.0	.287 .227 .182	.247 .196 .159	.170 .137 .112	.098 .081 .066	.032 .026 .022	
6.0	.280 .219 .175	.241 .190 .152	.166 .133 .108	.096 .078 .064	.031 .026 .021	
7.0	.273 .212 .170	.235 .184 .148	.162 .129 .105	.094 .076 .062	.030 .025 .021	
8.0	.267 .207 .166	.230 .179 .144	.159 .126 .102	.092 .074 .061	.030 .024 .020	
9.0	.261 .202 .162	.224 .175 .142	.155 .123 .101	.091 .073 .060	.029 .024 .020	
10.0	.255 .198 .160	.220 .172 .140	.152 .121 .099	.089 .071 .059	.029 .023 .020	

C Range: 0 - 360DEG
 C Interval: 22.5DEG
 Test Speed: HIGH
 Temperature:25.3DEG
 Operators:admin
 Test Date:2022-03-16

Range: 0 - 180DEG
 Interval: 1.0DEG
 Test System:EVERFINE GO-2000B_V1 SYSTEM V2.00.411
 Humidity:65.0%
 Test Distance:8.780m [K=1.0000]
 Remarks:

UGR(Unified Glare Rating) Table

Test:U:120.22V I:0.3838A P:41.783W PF:0.9046 Freq:0Hz Lamp Flux:2315.63x1 lm										
NAME: ADS lighting Corp					TYPE:			WEIGHT:		
SPEC.:ASD-LFC-AF-20D42-AC-3000K					DIM.:			SERIAL No.:		
MFR.: ADS lighting Corp					SUR.:0.485*0.485			Shielding Angle:		
ceiling/cavity	0.7	0.7	0.5	0.5	0.3	0.7	0.7	0.5	0.5	0.3
walls	0.5	0.3	0.5	0.3	0.3	0.5	0.3	0.5	0.3	0.3
working plane	0.2	0.2	0.2	0.2	0.2	0.2	0.2	0.2	0.2	0.2
Room dimensions	Viewed crosswise					Viewed endwise				
x = 2H y = 2H	11.3	12.6	11.8	13.1	13.7	11.2	12.6	11.7	13.0	13.6
3H	13.2	14.5	13.8	15.0	15.6	13.1	14.4	13.7	14.9	15.5
4H	14.1	15.3	14.7	15.8	16.5	14.0	15.2	14.6	15.7	16.3
6H	14.9	16.0	15.5	16.6	17.2	14.8	15.9	15.4	16.5	17.1
8H	15.3	16.4	15.9	17.0	17.6	15.2	16.2	15.8	16.8	17.5
12H	15.8	16.8	16.4	17.4	18.0	15.6	16.6	16.2	17.2	17.9
4H 2H	12.0	13.1	12.5	13.7	14.3	11.9	13.1	12.4	13.6	14.2
3H	14.1	15.1	14.7	15.7	16.3	14.0	15.0	14.6	15.6	16.3
4H	15.1	16.1	15.7	16.7	17.4	15.0	15.9	15.6	16.6	17.2
6H	16.1	16.9	16.7	17.6	18.3	16.0	16.8	16.6	17.4	18.1
8H	16.6	17.4	17.2	18.0	18.7	16.4	17.2	17.1	17.8	18.6
12H	17.1	17.8	17.8	18.5	19.2	16.9	17.7	17.6	18.3	19.1
8H 4H	15.5	16.3	16.1	16.9	17.6	15.4	16.2	16.0	16.8	17.5
6H	16.7	17.3	17.4	18.0	18.8	16.5	17.2	17.2	17.9	18.7
8H	17.3	17.9	18.0	18.6	19.4	17.2	17.7	17.9	18.4	19.2
12H	18.0	18.5	18.7	19.2	20.1	17.9	18.4	18.6	19.1	19.9
12H 4H	15.5	16.2	16.2	16.9	17.7	15.4	16.1	16.1	16.8	17.6
6H	16.8	17.4	17.5	18.1	18.9	16.7	17.3	17.4	18.0	18.8
8H	17.5	18.0	18.2	18.7	19.6	17.4	17.9	18.1	18.6	19.4
Variations with the observer position at spacings:										
S = 1.0H	+ 0.1 / - 0.1					+ 0.1 / - 0.1				
1.5H	+ 0.2 / - 0.3					+ 0.2 / - 0.3				
2.0H	+ 0.2 / - 0.4					+ 0.2 / - 0.4				

CIE Pub.117, 2316 lm Total Lamp Luminous Flux Corrected (8log(F/F0) = 2.9)
 Area: 0.7389 m2

C Range: 0 - 360DEG
 C Interval: 22.5DEG
 Test Speed: HIGH
 Temperature:25.3DEG
 Operators:admin
 Test Date:2022-03-16

Range: 0 - 180DEG
 Interval: 1.0DEG
 Test System:EVERFINE GO-2000B_V1 SYSTEM V2.00.411
 Humidity:65.0%
 Test Distance:8.780m [K=1.0000]
 Remarks:

UTILIZATION FACTORS TABLE

Test:U:120.22V I:0.3838A P:41.783W PF:0.9046 Freq:0Hz Lamp Flux:2315.63x1 lm		
NAME: ADS lighting Corp	TYPE:	WEIGHT:
SPEC.:ASD-LFC-AF-20D42-AC-3000K	DIM.:	SERIAL No.:
MFR.: ADS lighting Corp	SUR.:0.485*0.485	Shielding Angle:

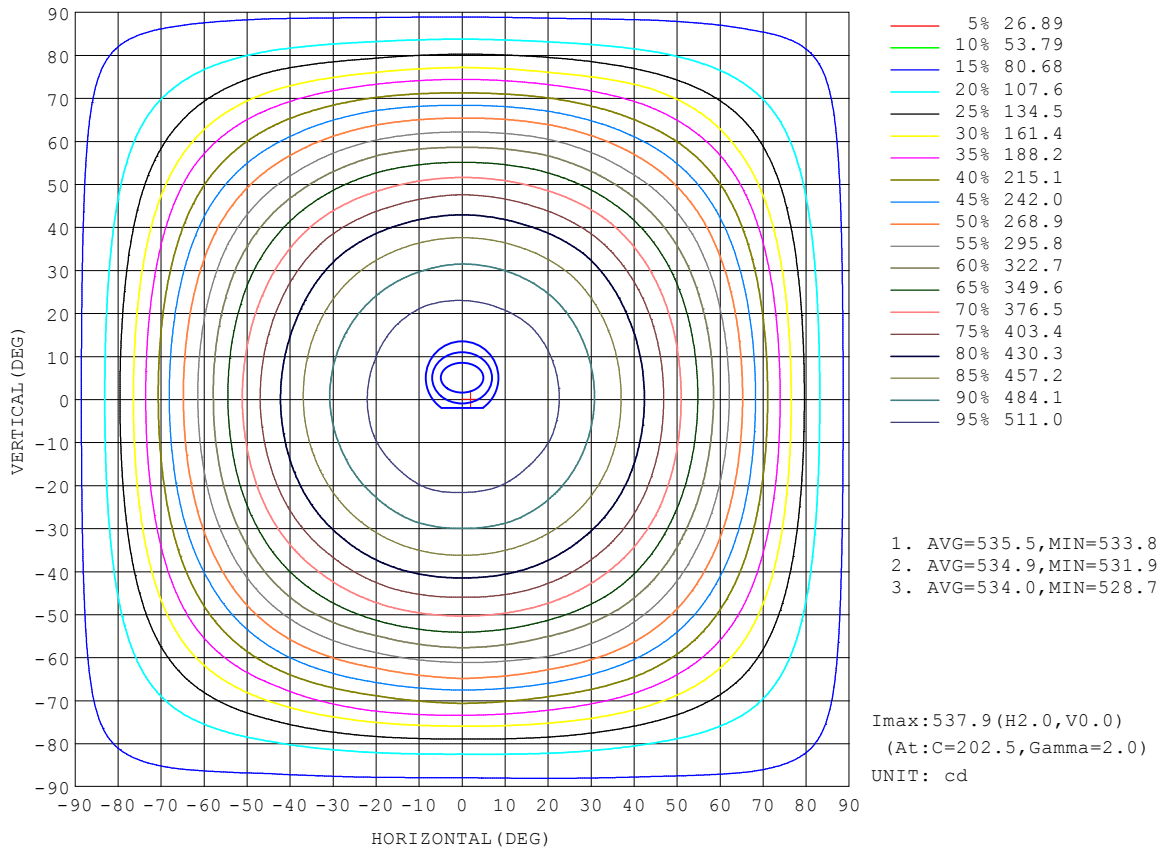
REFLECTANCE										
Ceiling	0.8	0.8	0.8	0.7	0.7	0.7	0.5	0.5	0.5	0
Walls	0.7	0.5	0.3	0.7	0.5	0.3	0.7	0.5	0.3	0
Working plane	0.2	0.2	0.2	0.2	0.2	0.2	0.2	0.2	0.2	0
ROOM INDEX	UTILIZATION FACTORS (PERCENT) $k(RI) \times RCR = 5$									
k = 0.60	49	37	30	48	37	30	46	36	29	22
0.80	59	46	38	57	45	38	54	44	37	29
1.00	67	54	46	65	53	46	61	54	44	36
1.25	74	62	54	71	61	53	67	58	51	42
1.50	79	68	60	76	66	58	71	63	56	46
2.00	86	76	68	83	74	67	77	70	64	52
2.50	91	81	74	87	79	72	81	74	69	56
3.00	94	86	79	91	83	77	84	78	73	60
4.00	99	92	86	95	89	83	88	83	78	64
5.00	102	96	90	98	92	88	90	86	82	67
ROOM INDEX	UF(total)									Direct
According to DIN EN 13032-2 2004			Suspended				SHRNOM = 1.25			

C Range: 0 - 360DEG
 C Interval: 22.5DEG
 Test Speed: HIGH
 Temperature:25.3DEG
 Operators:admin
 Test Date:2022-03-16

Range: 0 - 180DEG
 Interval: 1.0DEG
 Test System:EVERFINE GO-2000B_V1 SYSTEM V2.00.411
 Humidity:65.0%
 Test Distance:8.780m [K=1.0000]
 Remarks:

ISOCANDELA DIAGRAM

Test:U:120.22V I:0.3838A P:41.783W PF:0.9046 Freq:0Hz Lamp Flux:2315.63x1 lm		
NAME: ADS lighting Corp	TYPE:	WEIGHT:
SPEC.:ASD-LFC-AF-20D42-AC-3000K	DIM.:	SERIAL No.:
MFR.: ADS lighting Corp	SUR.:0.485*0.485	Shielding Angle:

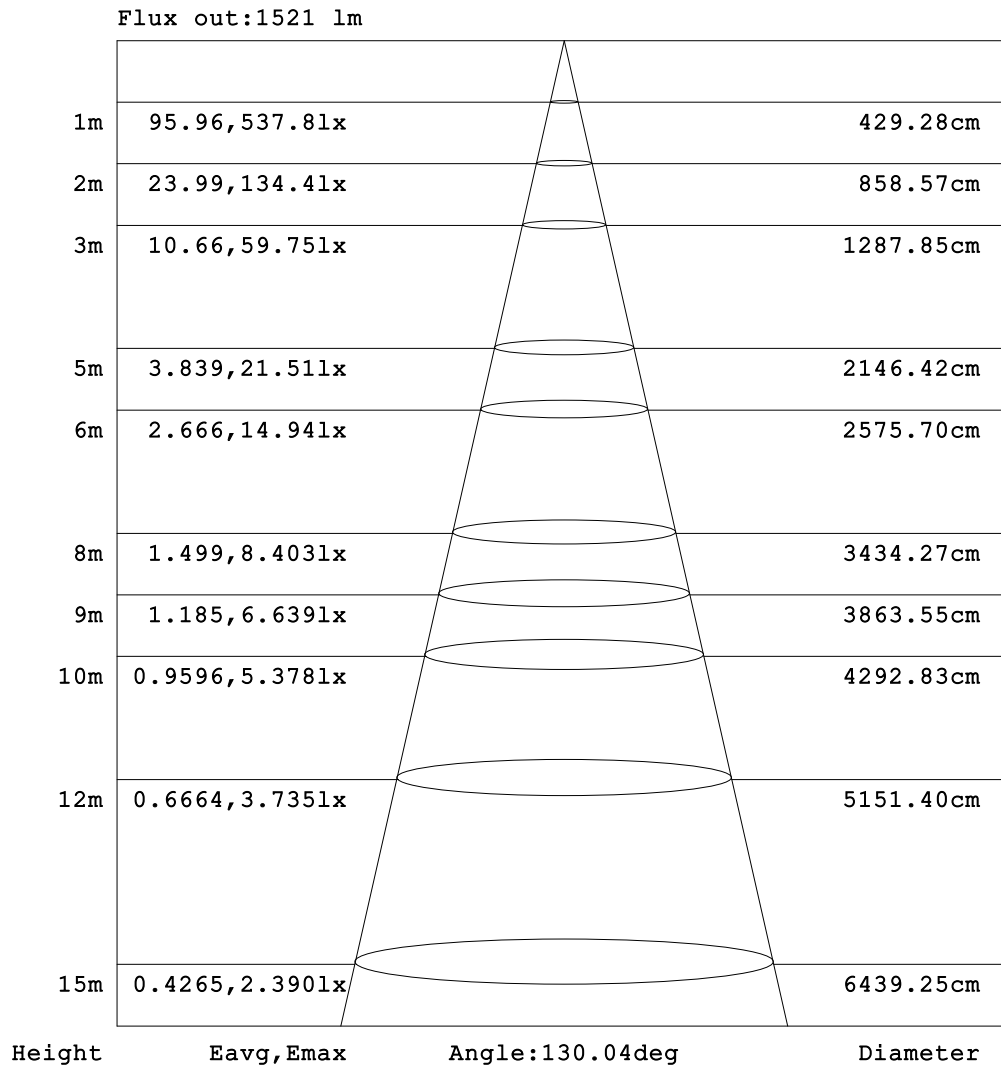


C Range: 0 - 360DEG
 C Interval: 22.5DEG
 Test Speed: HIGH
 Temperature:25.3DEG
 Operators:admin
 Test Date:2022-03-16

Range: 0 - 180DEG
 Interval: 1.0DEG
 Test System:EVERFINE GO-2000B_V1 SYSTEM V2.00.411
 Humidity:65.0%
 Test Distance:8.780m [K=1.0000]
 Remarks:

AAI Figure

Test:U:120.22V I:0.3838A P:41.783W PF:0.9046 Freq:0Hz Lamp Flux:2315.63x1 lm		
NAME: ADS lighting Corp	TYPE:	WEIGHT:
SPEC.:ASD-LFC-AF-20D42-AC-3000K	DIM.:	SERIAL No.:
MFR.: ADS lighting Corp	SUR.:0.485*0.485	Shielding Angle:



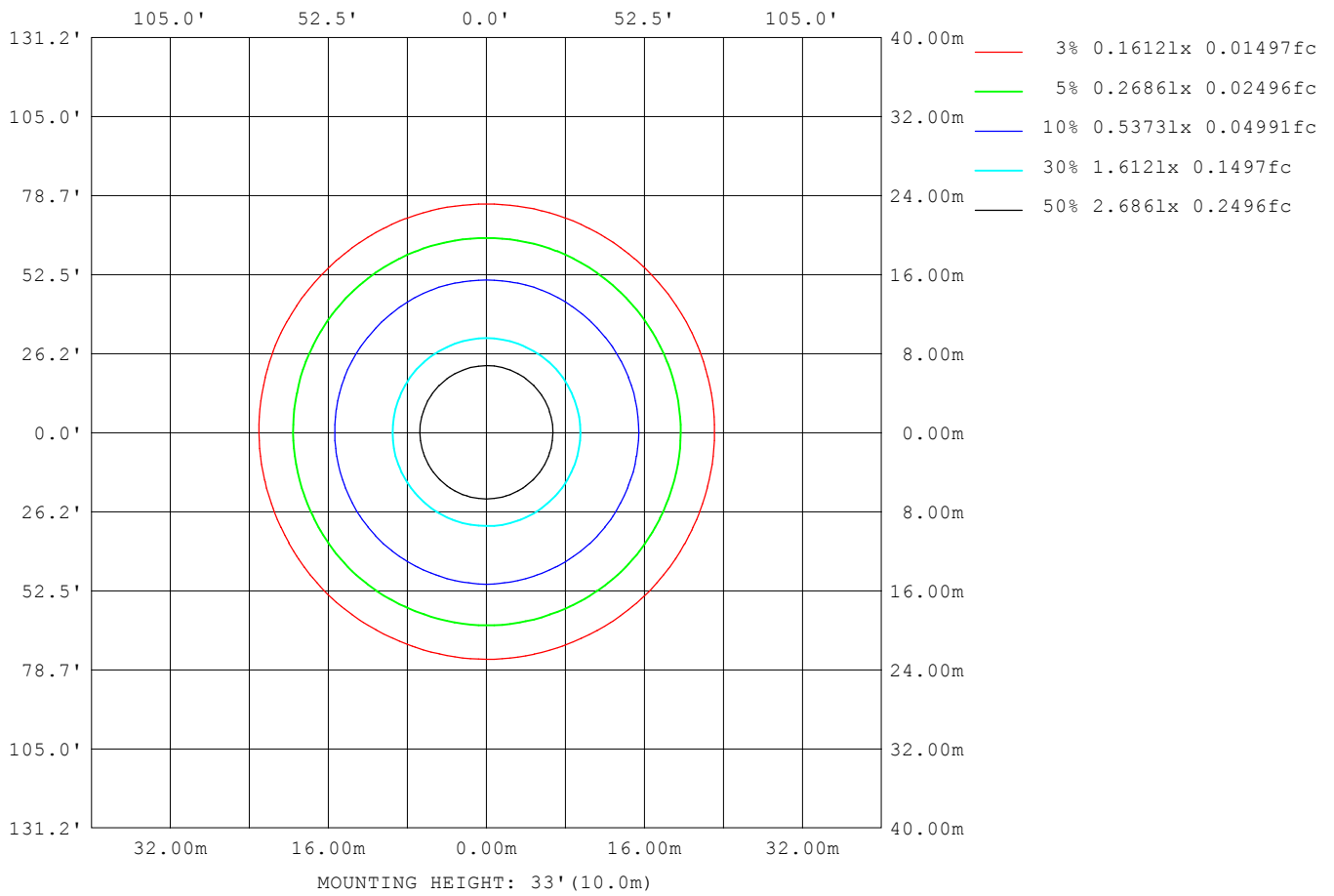
Note:The Curves indicate the illuminated area and the average illumination when the luminaire is at different distance.

C Range: 0 - 360DEG
 C Interval: 22.5DEG
 Test Speed: HIGH
 Temperature:25.3DEG
 Operators:admin
 Test Date:2022-03-16

Range: 0 - 180DEG
 Interval: 1.0DEG
 Test System:EVERFINE GO-2000B_V1 SYSTEM V2.00.411
 Humidity:65.0%
 Test Distance:8.780m [K=1.0000]
 Remarks:

ISOLUX DIAGRAM

Test:U:120.22V I:0.3838A P:41.783W PF:0.9046 Freq:0Hz Lamp Flux:2315.63x1 lm		
NAME: ADS lighting Corp	TYPE:	WEIGHT:
SPEC.:ASD-LFC-AF-20D42-AC-3000K	DIM.:	SERIAL No.:
MFR.: ADS lighting Corp	SUR.:0.485*0.485	Shielding Angle:



C Range: 0 - 360DEG
 C Interval: 22.5DEG
 Test Speed: HIGH
 Temperature:25.3DEG
 Operators:admin
 Test Date:2022-03-16

Range: 0 - 180DEG
 Interval: 1.0DEG
 Test System:EVERFINE GO-2000B_V1 SYSTEM V2.00.411
 Humidity:65.0%
 Test Distance:8.780m [K=1.0000]
 Remarks:

LED Avg.L Report

Test:U:120.22V I:0.3838A P:41.783W PF:0.9046 Freq:0Hz Lamp Flux:2315.63x1 lm		
NAME: ADS lighting Corp	TYPE:	WEIGHT:
SPEC.:ASD-LFC-AF-20D42-AC-3000K	DIM.:	SERIAL No.:
MFR.: ADS lighting Corp	SUR.:0.485*0.485	Shielding Angle:

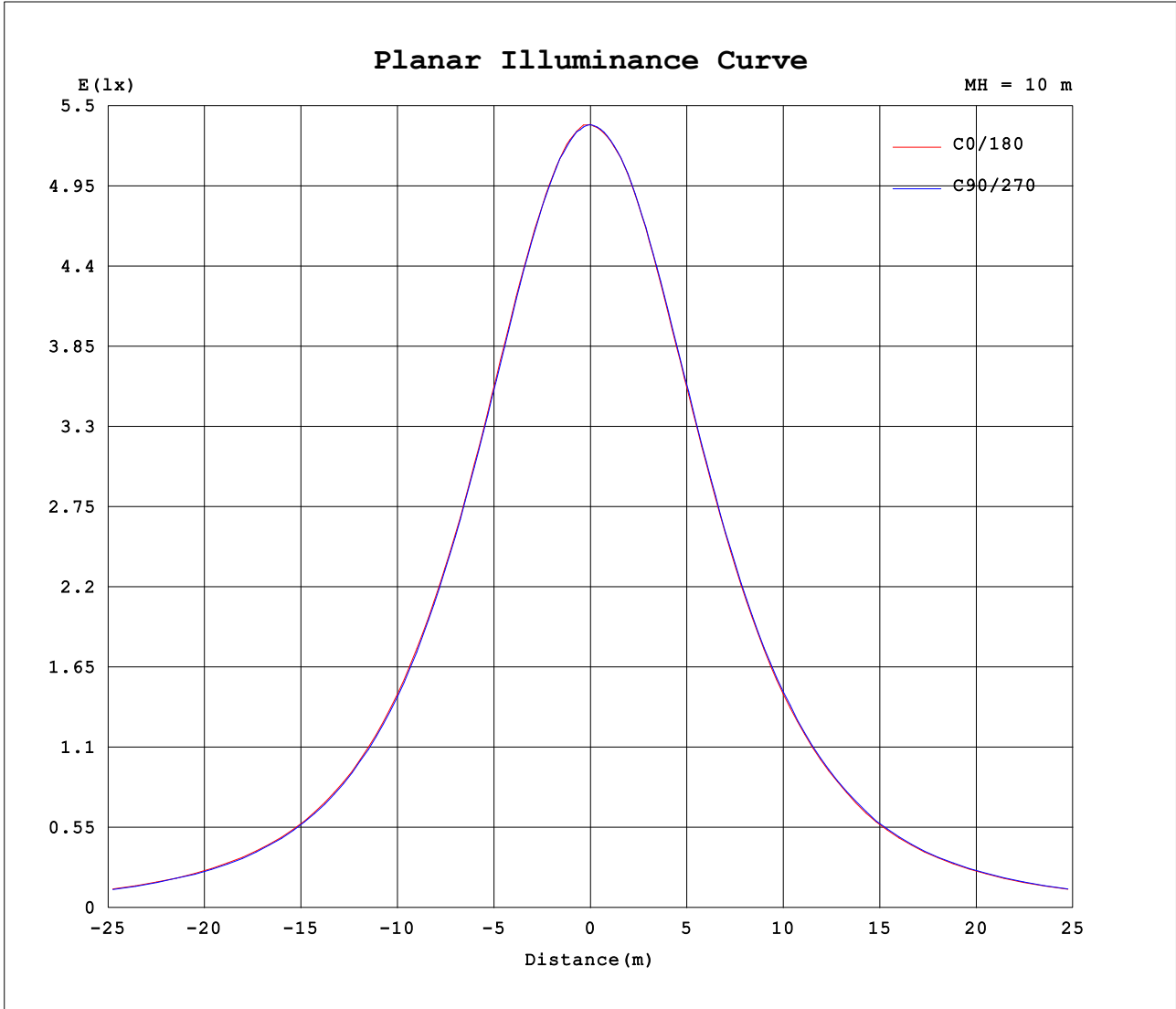
AvgL	cd/m2
L_0~180 (65) av	861
L_0~180 (75) av	918
L_0~180 (85) av	1494
L_90~270 (65) av	866
L_90~270 (75) av	919
L_90~270 (85) av	1494
L_45 (65) av	860
L_45 (75) av	929
L_45 (85) av	1489

Standard: GB/T 29293-2012

C Range: 0 - 360DEG
 C Interval: 22.5DEG
 Test Speed: HIGH
 Temperature:25.3DEG
 Operators:admin
 Test Date:2022-03-16

Range: 0 - 180DEG
 Interval: 1.0DEG
 Test System:EVERFINE GO-2000B_V1 SYSTEM V2.00.411
 Humidity:65.0%
 Test Distance:8.780m [K=1.0000]
 Remarks:

Planar Illuminance Curve



C Range: 0 - 360DEG
 C Interval: 22.5DEG
 Test Speed: HIGH
 Temperature:25.3DEG
 Operators:admin
 Test Date:2022-03-16

Range: 0 - 180DEG
 Interval: 1.0DEG
 Test System:EVERFINE GO-2000B_V1 SYSTEM V2.00.411
 Humidity:65.0%
 Test Distance:8.780m [K=1.0000]
 Remarks:

LUMINOUS DISTRIBUTION INTENSITY DATA

Test:U:120.22V I:0.3838A P:41.783W PF:0.9046 Freq:0Hz Lamp Flux:2315.63x1 lm		
NAME: ADS lighting Corp	TYPE:	WEIGHT:
SPEC.:ASD-LFC-AF-20D42-AC-3000K	DIM.:	SERIAL No.:
MFR.: ADS lighting Corp	SUR.:0.485*0.485	Shielding Angle:

Table--1

UNIT: cd

C (DEG) □ (DEG)	0	22.5	45	67.5	90	112.5	135	157.5	180	202.5	225	247.5	270	292.5	315	337.5			
0	537	538	538	537	537	537	537	537	537	538	538	537	537	537	537	537			
5	536	536	535	535	535	535	535	535	535	535	537	537	536	536	536	535			
10	532	532	532	532	531	532	531	532	533	532	532	532	533	533	532	532			
15	526	526	526	525	525	525	524	526	526	526	526	526	527	527	526	527			
20	517	517	515	515	515	515	515	516	516	517	518	518	518	518	518	518			
25	505	505	502	502	501	502	501	502	504	503	505	505	505	505	505	505			
30	487	486	486	485	484	485	484	485	487	488	488	488	490	489	488	488			
35	466	465	465	464	463	464	463	464	467	467	467	468	469	469	469	467			
40	443	442	440	440	439	440	440	440	443	442	444	445	446	445	446	443			
45	415	414	412	411	410	410	410	413	415	415	417	417	419	417	418	415			
50	384	382	381	380	379	379	378	382	383	383	385	386	387	386	386	385			
55	348	345	346	341	343	340	344	342	344	349	349	351	350	351	350	350			
60	312	307	309	306	305	303	306	305	306	310	313	313	311	314	311	312			
65	271	268	268	266	269	264	265	264	267	270	270	273	272	275	271	272			
70	225	223	225	219	222	217	219	220	221	226	228	230	227	229	226	227			
75	177	177	173	173	171	172	172	174	174	179	181	180	181	181	185	178			
80	131	131	129	128	125	127	126	129	131	132	136	134	137	135	134	133			
85	96.4	96.4	94.8	94.3	92.9	93.2	92.7	94.8	96.0	97.3	98.5	98.2	99.5	97.7	97.5	96.1			
90	77.1	77.4	76.8	76.6	76.1	75.9	75.7	76.5	76.7	77.1	77.5	77.0	77.2	76.6	76.6	76.1			
95	75.3	75.8	75.9	75.7	75.4	75.0	74.9	75.0	74.6	74.5	73.7	73.4	73.2	73.0	73.5	73.9			
100	76.0	76.1	75.8	76.0	75.7	75.2	74.9	75.4	75.4	75.0	73.2	73.3	73.4	73.1	73.2	74.2			
105	76.1	75.9	75.2	75.1	74.9	74.5	74.2	75.3	75.4	74.8	72.1	72.7	72.5	72.5	72.6	74.2			
110	75.9	74.8	74.1	74.2	73.9	73.5	72.9	74.0	75.0	73.5	71.3	71.6	71.5	71.5	71.7	73.5			
115	72.2	71.0	72.6	72.6	72.8	72.0	71.4	70.2	71.0	69.9	70.2	70.1	70.7	70.0	70.6	70.4			
120	67.5	67.3	70.3	70.3	70.8	69.7	69.5	66.3	66.4	66.1	68.6	68.1	68.7	68.1	68.7	66.4			
125	66.4	64.1	66.7	67.3	68.2	66.3	66.4	63.3	65.0	62.9	66.1	65.4	66.4	65.7	66.2	63.1			
130	64.5	61.5	61.6	63.9	65.2	62.3	61.4	60.7	63.1	60.2	61.4	62.5	63.9	62.7	61.7	60.2			
135	61.9	58.7	56.8	59.4	61.9	57.6	57.2	57.8	61.1	57.2	57.0	59.0	61.3	59.3	57.3	57.2			
140	58.8	54.3	53.7	53.2	56.8	51.4	53.4	54.6	58.5	54.1	53.6	53.6	57.9	54.5	53.6	54.0			
145	55.1	51.4	50.6	48.3	51.7	48.2	49.3	51.8	54.3	50.7	50.2	48.3	53.6	49.2	50.2	51.3			
150	51.1	48.7	47.4	46.1	48.0	45.5	46.3	48.4	50.2	47.9	47.3	46.0	48.8	46.4	46.4	48.4			
155	47.1	45.2	43.8	42.8	43.5	42.3	43.0	45.1	46.2	44.9	43.9	43.5	44.5	43.3	43.5	45.5			
160	43.5	42.4	40.2	39.0	39.6	40.0	39.6	41.0	42.5	40.5	41.0	41.4	40.8	39.8	40.5	42.3			
165	40.1	39.1	37.3	36.0	37.2	36.9	36.7	37.8	39.2	37.4	37.8	38.7	38.2	36.0	37.0	38.5			
170	38.7	39.9	38.9	35.8	37.3	38.3	38.7	37.3	38.2	37.0	39.3	39.0	37.3	35.9	37.6	38.5			
175	35.2	38.7	36.2	36.2	38.7	38.9	36.5	36.7	38.2	36.2	36.6	38.9	38.4	36.1	36.5	38.5			
180	39.0	37.0	36.8	37.8	40.0	37.8	37.3	37.5	39.0	37.0	36.8	37.8	40.1	37.8	37.2	37.5			

C Range: 0 - 360DEG
 C Interval: 22.5DEG
 Test Speed: HIGH
 Temperature:25.3DEG
 Operators:admin
 Test Date:2022-03-16

□ Range: 0 - 180DEG
 □ Interval: 1.0DEG
 Test System:EVERFINE GO-2000B_V1 SYSTEM V2.00.411
 Humidity:65.0%
 Test Distance:8.780m [K=1.0000]
 Remarks: