



# LED Round Low Bay Light with Motion Sensor

## Premium Series

► **DESIGN & OPTIONS** - LED ROUND LOW BAY WITH MOTION SENSOR has vandal-proof and powder coated die-cast aluminum housing that provides excellent heat dissipation. The built-in bi-level microwave motion sensor will turn off the fixture automatically when no motion is detected. It comes with 120-277V and a 0-10V dimmable driver. This fixture also includes a color adjustable option, letting you set it to 3000K, 4000K or 5000K with a simple switch. It comes with a BRONZE or WHITE finish.

► **INSTALLATION** - The fixture can be either surface mounted (directly on surface or with surface mounting bracket, sold separately) or pendant mounted. Refer to installation instructions for detailed steps.

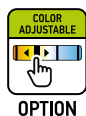
► **APPLICATION** - The LED ROUND LOW BAYS WITH MOTION SENSOR are a durable and efficient solution for lighting parking garages, gas stations, tunnels, train stations, underpasses, storefront soffits, and more. The fixture is Wet location rated and can operate in temperatures between -22+122°F (-30+50°C), allowing it to be utilized in a wide variety of applications and climates.

► **ENERGY SAVINGS & EFFICIENCY** - This fixture provides a lumen output equal to MH/HPS and can cut your electric bill by up to 80% instantly. With a lifespan of 54,000 hours, these fixtures are made to last decades under normal operation! This fixture will save you a significant amount of money in its lifetime.

► **CERTIFICATION & WARRANTY** - Buy with confidence: ASD provides a 5-year warranty along with UL and DLC Premium certifications to guarantee top quality products and safety!

Top US certifications allow participation in rebates; please check the rebate programs available in your state.

|                |  |
|----------------|--|
| Catalog number |  |
| Notes          |  |
| Type           |  |



### PRODUCT LEGEND:

| Family                  | Watts                    | Dimmable | CCT                                      | Option        | Finish                                     | Series     |
|-------------------------|--------------------------|----------|--|---------------|--|------------|
| <b>ASD-LRLB</b>         | <b>XX</b>                | <b>D</b> | <b>XX</b>                                | <b>MS</b>     | <b>XX</b>                                  | <b>PRM</b> |
| LED Round Low Bay Light | 55 = 55 W<br>100 = 100 W | Dimmable | 50 = 5,000 K<br>CC = 3,000/4,000/5,000 K | Motion Sensor | Blank = White<br>WH = White<br>BZ = Bronze | Premium    |

### LED ROUND LOW BAY LIGHT FIXTURE:

| Model                    | Watts | Voltage   | Dimming | Lumens               | CCT                 | Finish | Dimensions (LxWxH) |
|--------------------------|-------|-----------|---------|----------------------|---------------------|--------|--------------------|
| ASD-LRLB-100D50-MS-PRM   | 100 W | 120-277 V | 1-10 V  | 12,487 lm            | 5,000 K             | White  | 11" x 11" x 3 1/8" |
| ASD-LRLB-55DCC-MS-WH-PRM | 55 W  | 120-277 V | 1-10 V  | 6,297/7,312/6,987 lm | 3,000/4,000/5,000 K | White  | 10" x 10" x 3 1/8" |
| ASD-LRLB-55DCC-MS-BZ-PRM | 55 W  | 120-277 V | 1-10 V  | 6,297/7,312/6,987 lm | 3,000/4,000/5,000 K | Bronze | 10" x 10" x 3 1/8" |

### ORDERING INFORMATION:

| Model                    | Watts | CCT                 | UPC          | Pcs per Carton | Carton Size           | Carton Weight | GTIN-14        |
|--------------------------|-------|---------------------|--------------|----------------|-----------------------|---------------|----------------|
| ASD-LRLB-100D50-MS-PRM   | 100 W | 5,000 K             | 819201025602 | 2              | 13.6" x 11.8" x 13.6" | 13.4 lb       | 10819201025609 |
| ASD-LRLB-55DCC-MS-WH-PRM | 55 W  | 3,000/4,000/5,000 K | 810050730143 | 2              | 12.6" x 11.8" x 12.6" | 12.1 lb       | 10810050730140 |
| ASD-LRLB-55DCC-MS-BZ-PRM | 55 W  | 3,000/4,000/5,000 K | 810050731348 | 2              | 12.6" x 11.8" x 12.6" | 12.1 lb       | 10810050731345 |

### ACCESSORIES:

| Model         | Name                     | Materials             | Weight            | Dimensions           | UPC          |
|---------------|--------------------------|-----------------------|-------------------|----------------------|--------------|
| ASD-SMB-CAN04 | Surface mounting bracket | Aluminum              | 1.50 lb (0.68 kg) | 6" x 6 3/4" x 1 3/8" | 819201023219 |
| Model         | Pcs per Carton           | Carton Size           | Carton Weight     | GTIN 14              |              |
| ASD-SMB-CAN04 | 20                       | 16.7" x 14.2" x 12.8" | 33.07 lbs         | 10819201023216       |              |

For most up-to-date spec sheets please refer to [asd-lighting.com](http://asd-lighting.com)

ASD LIGHTING CORP

E-mail: [orders@asd-lighting.com](mailto:orders@asd-lighting.com) | Web site: [www.asd-lighting.com](http://www.asd-lighting.com)





# LED Round Low Bay Light with Motion Sensor

Premium Series

## PRODUCT SPECIFICATIONS:

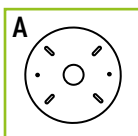
| Construction & Materials  |                                  |                 |                          |                      |         |          |
|---|----------------------------------|-----------------|--------------------------|----------------------|---------|----------|
| Housing   | Aluminum + PC                    |                 |                          |                      |         |          |
| Finish  | White, Bronze                    |                 |                          |                      |         |          |
| Weight  | ASD-LRLB-100D50-MS-PRM           | 5.5 lb (2.5 kg) | ASD-LRLB-55DCC-MS-WH-PRM | 4.4 lb (2 kg)        |         |          |
|   |                                  |                 | ASD-LRLB-55DCC-MS-BZ-PRM |                      |         |          |
| Environmental System  |                                  |                 |                          |                      |         |          |
| Work Environment  | Suitable for Wet Locations, IP65 |                 |                          |                      |         |          |
| Operating Temperature   | -22°F to 122°F (-30°C to 50°C)   |                 |                          |                      |         |          |
| L-70 Life   | R > 54,000 hrs, C > 174,000 hrs  |                 |                          |                      |         |          |
| Optical System  |                                  |                 |                          |                      |         |          |
| Luminous Flux   | ASD-LRLB-100D50-MS-PRM           | 12,487 lm       | ASD-LRLB-55DCC-MS-WH-PRM | 6,297/7,312/6,987 lm |         |          |
|   |                                  |                 | ASD-LRLB-55DCC-MS-BZ-PRM | 6,297/7,312/6,987 lm |         |          |
| Color Temperature   | 5,000 K                          |                 | 3,000/4,000/5,000 K      |                      |         |          |
| CRI   | ≥80                              |                 |                          |                      |         |          |
| Electrical System   |                                  |                 |                          |                      |         |          |
| Input Voltage   | 120-277V AC                      |                 |                          |                      |         |          |
| Max input current   | ASD-LRLB-100D50-MS-PRM           | 1.0 A           | ASD-LRLB-55DCC-MS-WH-PRM | 0.55 A               |         |          |
|   |                                  |                 | ASD-LRLB-55DCC-MS-BZ-PRM |                      |         |          |
| Inrush current (Action time)  | ASD-LRLB-55D50-MS-PRM            | 35 A (0.065 S)  | ASD-LRLB-55DCC-MS-WH-PRM | 30 A (0.415 S)       |         |          |
|   |                                  |                 | ASD-LRLB-55DCC-MS-BZ-PRM |                      |         |          |
| AC input range  | min 100 V max 277 V              |                 |                          |                      |         |          |
| Off State Power   | 0 W                              |                 |                          |                      |         |          |
| Power Consumption   | ASD-LRLB-100D50-MS-PRM           | 100 W           | ASD-LRLB-55DCC-MS-WH-PRM | 55 W                 |         |          |
|   |                                  |                 | ASD-LRLB-55DCC-MS-BZ-PRM | 55 W                 |         |          |
| Power Factor  | ≥ 0.9                            |                 |                          |                      |         |          |
| Output voltage  | ASD-LRLB-55D50-MS-PRM            | 60-80 V         | ASD-LRLB-55DCC-MS-WH-PRM | 60-80 V              |         |          |
|   |                                  |                 | ASD-LRLB-55DCC-MS-BZ-PRM |                      |         |          |
| Max output current  | ASD-LRLB-55D50-MS-PRM            | 690 mA          | ASD-LRLB-55DCC-MS-WH-PRM | 750 mA               |         |          |
|   |                                  |                 | ASD-LRLB-55DCC-MS-BZ-PRM |                      |         |          |
| LED driver class  | ASD-LRLB-55D50-MS-PRM            | Class 1         | ASD-LRLB-55DCC-MS-WH-PRM | Class 2              |         |          |
|   |                                  |                 | ASD-LRLB-55DCC-MS-BZ-PRM |                      |         |          |
| Dimming compatible controls   |                                  |                 |                          |                      |         |          |
| Brand   | Leviton                          |                 | Lutron                   |                      | Legrand |          |
| Models  | DS710                            | IP710           | NTSTV-DV                 | NFTV                 | DVTV-WH | H4FBL3PW |
| Regular and Voluntary Certifications  |                                  |                 |                          |                      |         |          |
| 5-year limited warranty   |                                  |                 |                          |                      |         |          |
| cULus listed  | E473804                          |                 |                          |                      |         |          |
| DesignLights Consortium (DLC) listed (Classification: Premium)<br>Main: Outdoor Luminaires; General Application: Low Output; Primary Use: Parking Garage Luminaires |                                  |                 |                          |                      |         |          |

This fixture features Integrated dimming and can be 1-10v, PWM signal or resistance to save energy and achieve specific light levels.

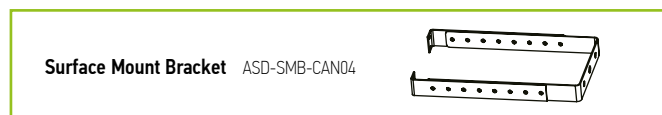
The LED Round Low Bay light is designed to install as a surface mounted luminaire.

## PACKAGE CONTENTS:

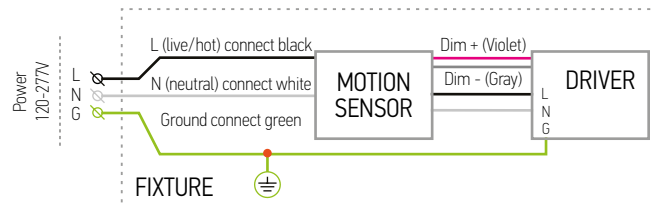
| Description                     | Q-ty |
|---------------------------------|------|
| LED Round Low Bay Light Fixture | 1    |
| Template (A)                    | 1    |
| Box                             | 1    |
| Cut Sheet                       | 2    |



## ACCESSORIES (sold separately):



## ELECTRICAL SCHEMATIC DIAGRAM:



For most up-to-date spec sheets please refer to [asd-lighting.com](http://asd-lighting.com)

ASD LIGHTING CORP

E-mail: [orders@asd-lighting.com](mailto:orders@asd-lighting.com) | Web site: [www.asd-lighting.com](http://www.asd-lighting.com)



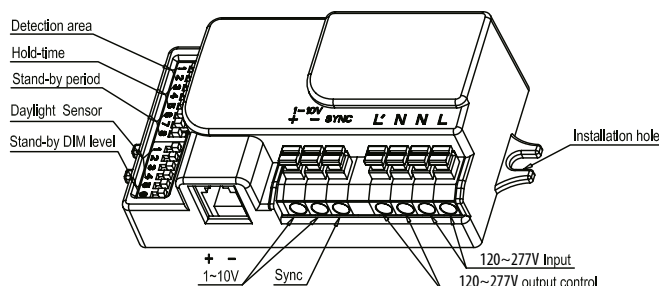


# LED Round Low Bay Light with Motion Sensor


Premium Series

## INTEGRATED MICROWAVE MOTION SENSOR INFORMATION

- ▶ Microwave technology allows for active motion sensing regardless of background temperature or line of sight issues
- ▶ Motion easily detected through plastic, glass and other thin non-metal material
- ▶ Sensors are completely contained within the enclosure for IP65 rating
- ▶ 1-10 V interface allows for multiple dimming levels and functionality (see below)
- ▶ Integral daylight sensor allows light activation at defined brightness threshold
- ▶ Precise daylight thresholds, time delays and detection areas set via DIP switch (see sensor settings)



| Specifications         | Model MC605V  |
|------------------------|---|
| Operating voltage      | 120-277V AC   |
| Rated load             | 400W @ 120Vac, 800W @ 220-277Vac (inductive)          |
| Microwave frequency    | 5.8GHz±75MHz, ISM wave band                           |
| Microwave power        | < 0.5mW   |
| Stand-by power         | < 1W  |
| Detection range        | 8m (@3m mounting height)                              |
| Detection area         | 25%/ 50%/ 75%/ 100%                                   |
| Hold time              | 5s/ 30s/ 90s/ 3min/ 20min/+∞                          |
| Daylight sensor        | 5lux/15lux/30lux/50lux/100lux/150lux/Disable          |
| Stand-by period        | 0s/5s/5min/10min/30min/1h/+∞                          |
| Stand-by dimming level | 10%/20%/30%/50%                                       |
| Mounting height        | 10m Max.  |
| Motion detection       | 0.5-3m/s  |
| Detection angle        | 150°(wall installation)<br>360°(ceiling installation) |



RF interference may affect the operation of this sensor

### Dimming Function: 3 Step 100% – Low Light - Off

| Situation    | Sufficient Light | Insufficient light and motion | After hold time No further motion | After stand-by period |
|--------------|------------------|-------------------------------|-----------------------------------|-----------------------|
| Light status | OFF              | ON-100%                       | Low Light                         | Off                   |

### Dimming Function: 2 Step 100% – Low Light

| Situation    | No Motion | Motion    | After hold up time No further motion |
|--------------|-----------|-----------|--------------------------------------|
| Light Status | LOW LIGHT | On – 100% | Low Light                            |

**Note:** 2 step dimming requires that daylight sensor be set to disable mode.

## MOTION SENSOR SETTING

For motion sensor adjustment – open the driver box cover. Use the following DIP switch settings to set dimming levels, hold times, standby periods, detection area and daylight sensor mode. By selecting the combination switches to reach the desired sensor settings. Each switch will indicate ON when moved up. Close the driver box cover when the setup is complete.

|      | 1  | 2  |      |
|------|----|----|------|
| I ON | ON | ON | 100% |
| II   | ON | -  | 75%  |
| III  | -  | ON | 50%  |
| IV   | -  | -  | 25%  |

### Detection Area

Reduce detection area by selecting these switch combinations.

|      | 3  | 4  | 5  |       |
|------|----|----|----|-------|
| I ON | ON | ON | ON | 5s    |
| II   | -  | ON | ON | 30s   |
| III  | ON | -  | ON | 90s   |
| IV   | -  | -  | ON | 3min  |
| V    | ON | ON | -  | 20min |
| VI   | -  | -  | -  | +∞    |

### Hold Time

Refers to the time the lamp remains at 100% after no further motion is detected

|      | 6  | 7  | 8  |       |
|------|----|----|----|-------|
| I ON | ON | ON | ON | 0S    |
| II   | -  | ON | ON | 5S    |
| III  | ON | -  | ON | 5min  |
| IV   | -  | -  | ON | 10min |
| V    | ON | ON | -  | 30min |
| VI   | -  | ON | -  | 1h    |
| VII  | -  | -  | -  | +∞    |

### Stand by Period

Refers to the time the light stays on at low light level before it shuts completely off in the long absence of motion. Daylight sensor switch must be enabled

|      | 1  | 2  |     |
|------|----|----|-----|
| I ON | ON | ON | 50% |
| II   | -  | ON | 30% |
| III  | ON | -  | 20% |
| IV   | -  | -  | 10% |

### Stand by Dimming Period

This is the low light level after the hold time in the long absence of motion

|      | 3  | 4  | 5  | 6  |         |
|------|----|----|----|----|---------|
| I ON | ON | ON | ON | ON | 5lux    |
| II   | -  | ON | ON | ON | 15lux   |
| III  | ON | -  | ON | ON | 30Lux   |
| IV   | -  | -  | ON | ON | 50lux   |
| V    | ON | ON | -  | ON | 100lux  |
| VI   | ON | ON | ON | -  | 150lux  |
| VII  | -  | -  | -  | -  | Disable |

### Daylight Sensor

The sensor can be set to allow for illumination at a desired brightness. When set to disable mode, the daylight sensor will turn on the light when there is motion regardless of the ambient light level 100 lux, 50 lux: for darkness operation only.

**Note:** the sensor is only active when the light is totally off.

For most up-to-date spec sheets please refer to [asd-lighting.com](http://asd-lighting.com)



# LED Round Low Bay Light with Motion Sensor

Premium Series

## INSTALLATION GUIDE

### IMPORTANT SAFETY INFORMATION:

Please read all the instructions below before installation.

- ▶ Make sure that the supply voltage corresponds to the rated product voltage.
- ▶ The product must be installed by a qualified electrician in accordance with the National Electrical Code and corresponding local codes.
- ▶ If the product is damaged, do not use it.

### ⚠ WARNING

**RISK OF PERSONAL INJURY – READ and follow all WARNINGS and installation instructions.**

Keep or give to the owner for future reference.

**Risk of cuts:** Wear gloves to prevent cuts or abrasions when removing from carton, handling, installing, and maintaining this product.

**Risk of electric shock:** This product must be installed in accordance with the applicable installation code by a person familiar with the construction and operation of the product and the hazards involved.

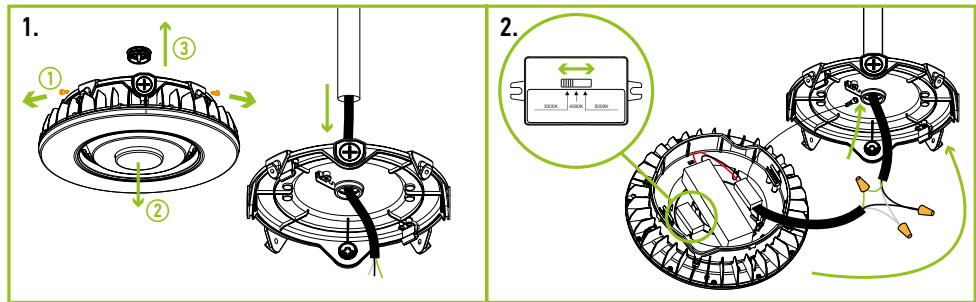
**Risk of Fire:** Minimum 194°F supply conductors. Consult a qualified electrician to ensure correct branch circuit conductor.

ASD® assumes no responsibility for claims arising out of improper or careless Installation or handling of this product.

For recessed installation: Access above ceiling required. Inherently protected. Vapor barrier must be suitable for 194°F.

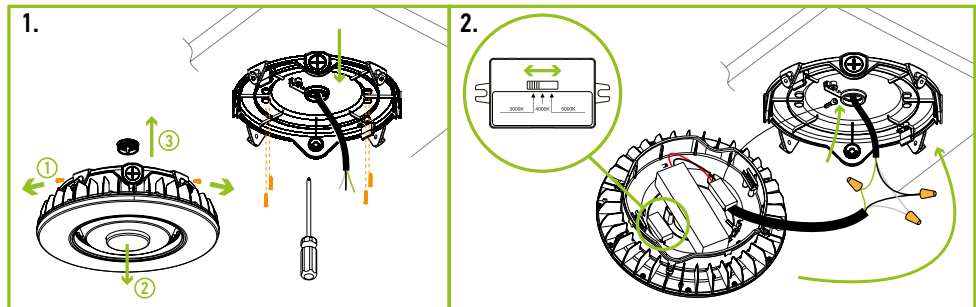
### POLE MOUNTING

1. Disassemble the fixture by removing the four screws along the perimeter of the fixture. Remove the 3/4 inch plug in the center knockout on top. Thread the top of the fixture on to a 3/4 inch conduit pipe.
2. Attach the safety wire from the base to the top. Connect the wires: Black to Black, White to White, Green to Green. Secure the connection with Wire Nuts. Choose needed color temperature by adjusting the switch. Reassemble the housing by screwing the perimeter screws back into place.



### SURFACE MOUNTING

1. Disassemble the fixture by removing the four screws along the perimeter of the fixture. Remove the 3/4 inch plug in the center knockout on top. Drill pilot holes. Bolt the top to the ceiling.
2. Attach the safety wire from the base to the top. Connect the wires: Black to Black, White to White, Green to Green. Secure the connection with Wire Nuts. Choose needed color temperature by adjusting the switch. Reassemble the housing by screwing the perimeter screws back into place.

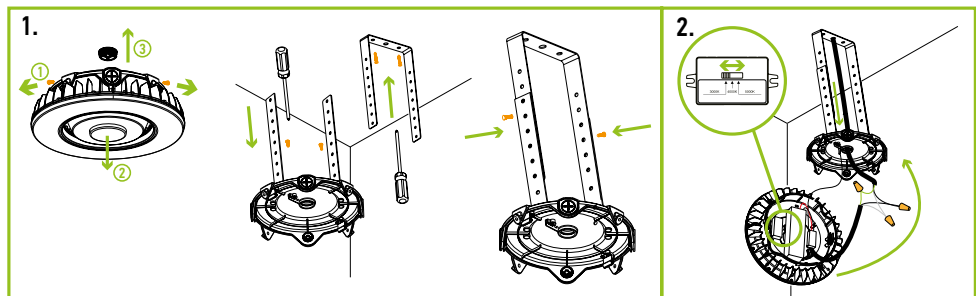


### SURFACE MOUNTING

#### BRACKET ASD-SMB-CAN04

sold separately:

1. Disassemble the fixture by removing the four screws along the perimeter of the fixture. Remove the 3/4 inch plug in the center knockout on top. Screw one side of the mounting bracket to the ceiling. Screw the other side to the top of the fixture. Align both halves of the bracket and screw them together.
2. Attach the safety wire from the base to the top. Connect the wires: Black to Black, White to White, Green to Green. Secure the connection with Wire Nuts. Choose needed color temperature by adjusting the switch. Reassemble the housing by screwing the perimeter screws back into place.



For most up-to-date spec sheets please refer to [asd-lighting.com](http://asd-lighting.com)

ASD LIGHTING CORP

E-mail: [orders@asd-lighting.com](mailto:orders@asd-lighting.com) | Web site: [www.asd-lighting.com](http://www.asd-lighting.com)

