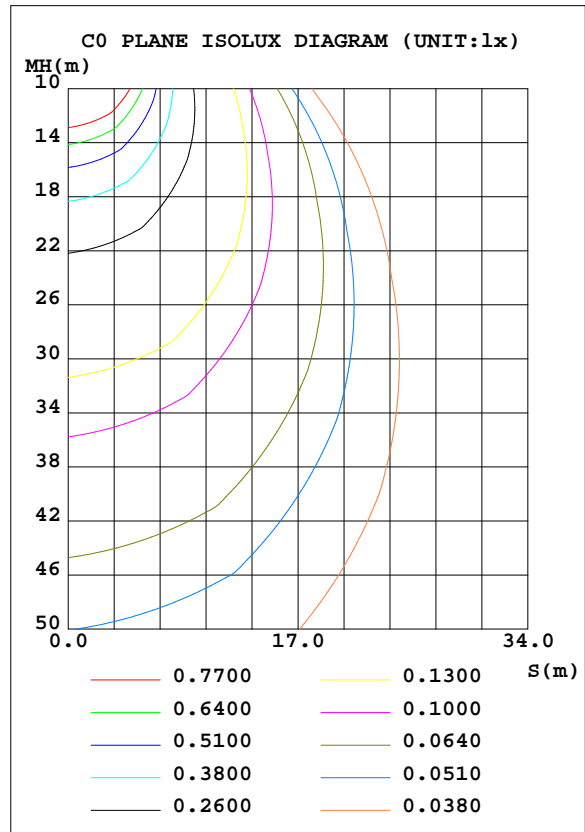
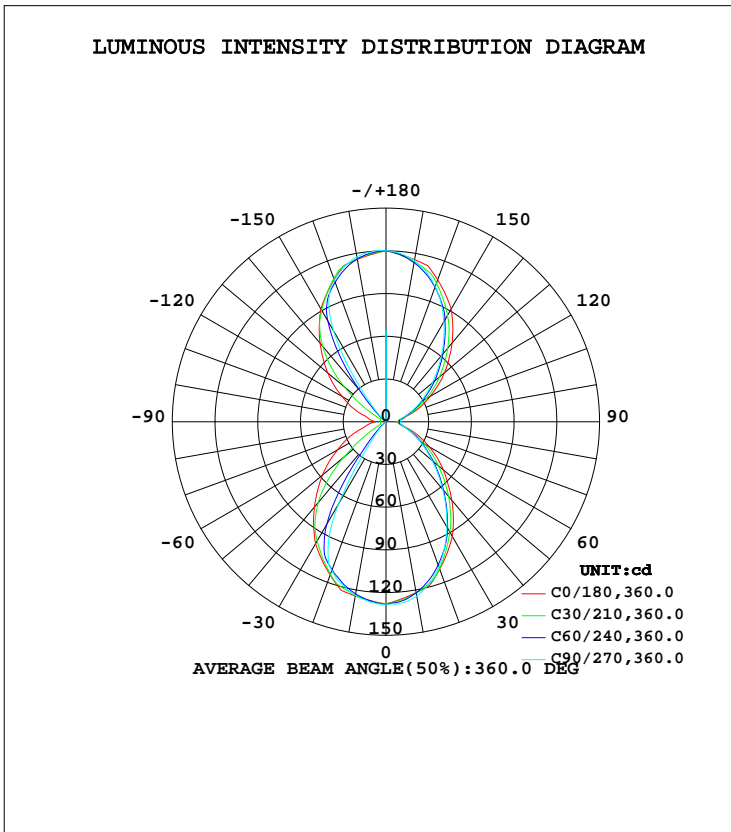


LUMINAIRE PHOTOMETRIC TEST REPORT

Test:U:120.00V I:0.1842A P:21.780W PF:0.9853 Freq:60.00Hz Lamp Flux:450.953x1 lm		
NAME: LED Wall Pack	TYPE:LED	WEIGHT:
SPEC.:ASD-LWS28S-MV-18D22CC-BK_3000K	DIM.:	SERIAL No.:
MFR.: ASD Lighting Corp	SUR.:	Shielding Angle:

DATA OF LAMP		PHOTOMETRIC DATA Eff: 20.70 lm/W			
MODEL	ASD-LWS28S-MV-18D22CC-BK	I _{max} (cd)	128.3	S/MH(C0/180)	1.16
NOMINAL POWER(W)	22	LOR(%)	100.0	S/MH(C90/270)	0.88
RATED VOLTAGE(V)	120	TOTAL FLUX(lm)	450.95	η UP, DN(C0-180)	28.8,29.9
NOMINAL FLUX(lm)	450.953	CIE CLASS	DIFFUSE	η UP, DN(C180-360)	20.7,20.7
LAMPS INSIDE	1	η up(%)	49.4	CIBSE SHR NOM	1.00
TEST VOLTAGE(V)	120	η down(%)	50.6	CIBSE SHR MAX	1.10



C Range: 0 - 360DEG
 C Interval: 15.0DEG
 Test Speed: HIGH
 Temperature: 25.0DEG
 Operators: Alan Wang
 Test Date: 09 August 2023

γ Range: 0 - 180DEG
 γ Interval: 1.0DEG
 Test System: EVERFINE GO-R5000_V2 SYSTEM V2.00.416
 Humidity: 42.7%
 Test Distance: 2.500m [K=1.0391]
 Remarks:

ZONAL FLUX DIAGRAM

ZONAL FLUX DIAGRAM:

γ	C0	C45	C90	C135	C180	C225	C270	C315	γ	Φ zone	Φ total	%lum,lamp
10	121.9	121.8	124.3	123.6	124.2	123.0	123.8	121.5	0- 10	11.94	11.94	2.65,2.65
20	110.3	109.7	108.5	112.7	114.6	112.8	111.1	109.8	10- 20	33.17	45.11	10,10
30	93.09	87.49	85.43	91.61	99.02	92.56	66.53	88.56	20- 30	46.07	91.18	20.2,20.2
40	71.98	65.89	61.91	70.35	78.21	50.20	10.50	47.60	30- 40	44.64	135.8	30.1,30.1
50	52.55	45.86	42.35	50.04	58.19	9.186	0.0430	8.017	40- 50	34.55	170.4	37.8,37.8
60	34.80	29.95	27.43	33.23	38.94	1.181	0.0299	1.021	50- 60	24.71	195.1	43.3,43.3
70	20.17	17.72	16.83	20.04	23.95	1.210	0.0223	1.005	60- 70	16.44	211.5	46.9,46.9
80	10.84	9.611	10.69	10.73	13.42	1.230	0.0194	1.002	70- 80	9.693	221.2	49.1,49.1
90	6.796	8.562	10.63	8.600	7.355	1.217	0.0280	0.9786	80- 90	6.789	228.0	50.6,50.6
100	11.91	9.972	10.63	9.946	12.19	1.194	0.0177	0.9856	90-100	6.768	234.8	52.1,52.1
110	21.56	18.71	16.96	18.73	21.53	1.195	0.0184	0.9922	100-110	9.556	244.3	54.2,54.2
120	35.75	31.17	28.06	31.23	35.38	1.177	0.0240	1.775	110-120	16.19	260.5	57.8,57.8
130	53.64	46.58	42.49	46.69	53.33	12.17	0.0502	16.90	120-130	24.78	285.3	63.3,63.3
140	72.23	65.15	60.48	65.31	72.04	52.05	17.17	58.23	130-140	35.04	320.4	71,71
150	91.52	84.05	81.22	84.38	91.49	86.99	73.49	87.44	140-150	44.38	364.7	80.9,80.9
160	106.2	103.1	101.1	103.5	106.3	106.5	105.8	105.8	150-160	43.84	408.6	90.6,90.6
170	115.7	113.6	115.0	114.0	115.8	116.2	117.7	116.0	160-170	31.18	439.8	97.5,97.5
180	120.1	120.1	120.1	120.1	120.1	120.1	120.1	120.1	170-180	11.20	451.0	100,100
DEG	LUMINOUS INTENSITY:cd									UNIT:lm		

Conical surface Flux(90deg): 154.46 lm

%lum = 34.3%
 %lamp = 34.3%

Conical surface Flux(120deg): 195.09 lm

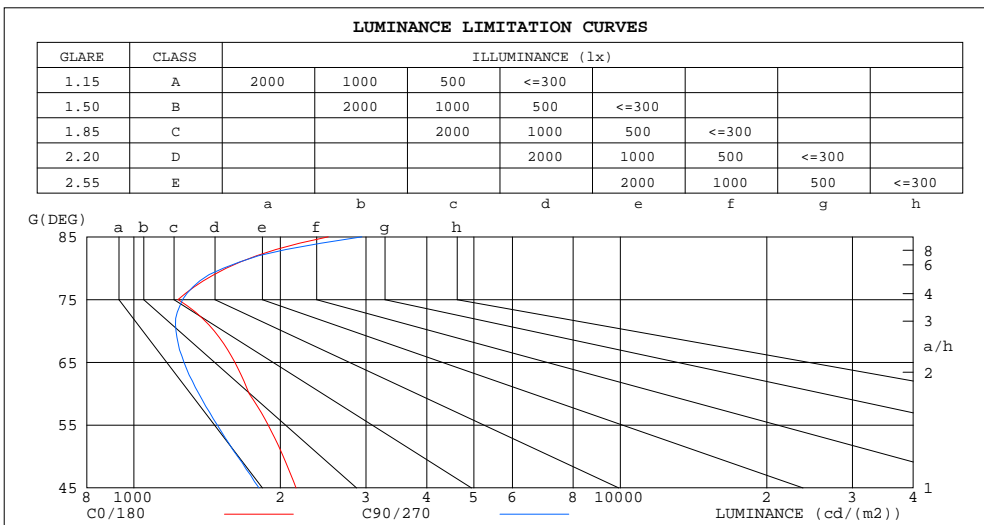
%lum = 43.3%
 %lamp = 43.3%

C Range: 0 - 360DEG
 C Interval: 15.0DEG
 Test Speed: HIGH
 Temperature: 25.0DEG
 Operators: Alan Wang
 Test Date: 09 August 2023

γ Range: 0 - 180DEG
 γ Interval: 1.0DEG
 Test System: EVERFINE GO-R5000_V2 SYSTEM V2.00.416
 Humidity: 42.7%
 Test Distance: 2.500m [K=1.0391]
 Remarks:

LUMINANCE LIMITATION CURVES

Test:U:120.00V I:0.1842A P:21.780W PF:0.9853 Freq:60.00Hz Lamp Flux:450.953x1 lm		
NAME: LED Wall Pack	TYPE:LED	WEIGHT:
SPEC.:ASD-LWS28S-MV-18D22CC-BK_3000K	DIM.:	SERIAL No.:
MFR.: ASD Lighting Corp	SUR.:	Shielding Angle:



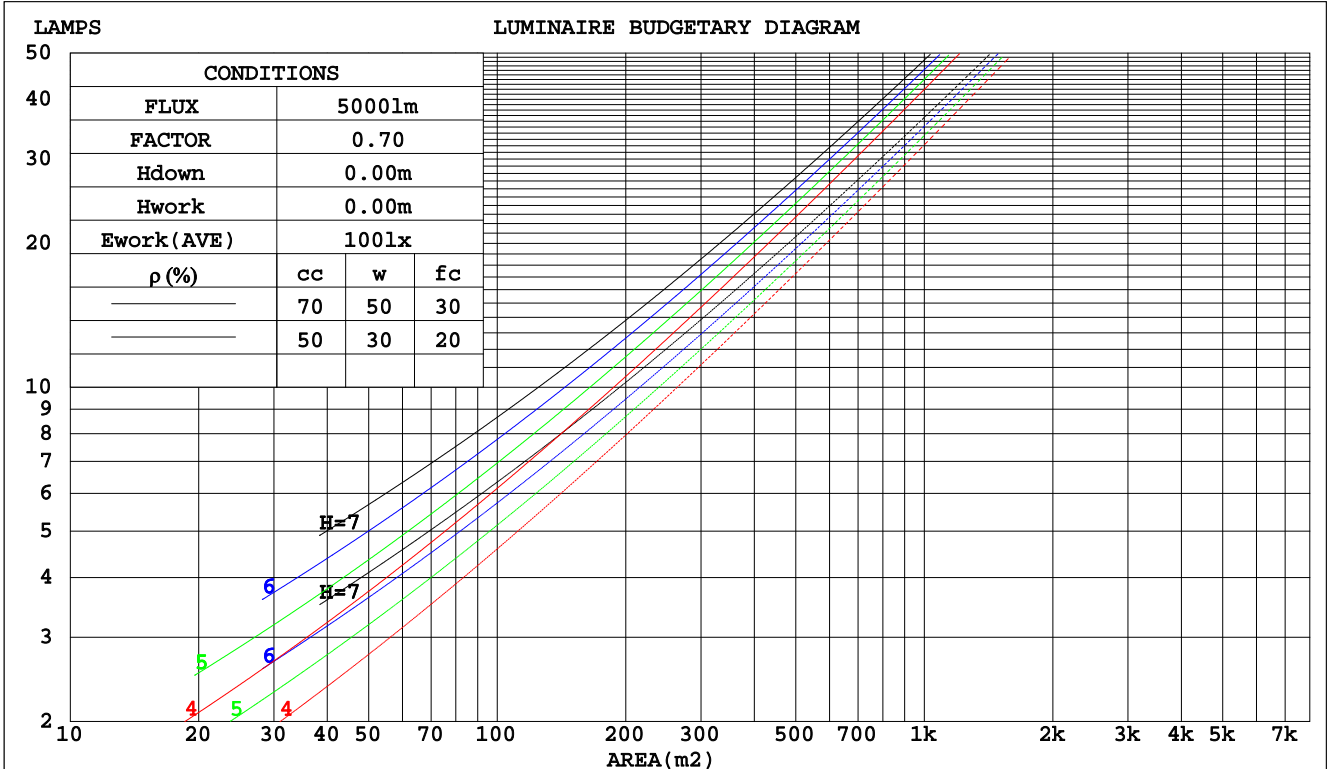
C Range: 0 - 360DEG
 C Interval: 15.0DEG
 Test Speed: HIGH
 Temperature: 25.0DEG
 Operators: Alan Wang
 Test Date: 09 August 2023

γ Range: 0 - 180DEG
 γ Interval: 1.0DEG
 Test System: EVERFINE GO-R5000_V2 SYSTEM V2.00.416
 Humidity: 42.7%
 Test Distance: 2.500m [K=1.0391]
 Remarks:

CU AND LUMINAIRE BUDGETARY ESTIMATE DIAGRAM

Test:U:120.00V I:0.1842A P:21.780W PF:0.9853 Freq:60.00Hz Lamp Flux:450.953x1 lm		
NAME: LED Wall Pack	TYPE:LED	WEIGHT:
SPEC.:ASD-LWS28S-MV-18D22CC-BK_3000K	DIM.:	SERIAL No.:
MFR.: ASD Lighting Corp	SUR.:	Shielding Angle:

pcc	80%			70%			50%			30%			10%			0
	50%	30%	10%	50%	30%	10%	50%	30%	10%	50%	30%	10%	50%	30%	10%	0
pw																0
pfc	20%			20%			20%			20%			20%			0
RCR	RCR:Room Cavity Ratio						Coefficients of Utilization(CU)									
0.0	1.07	1.07	1.07	.99	.99	.99	.84	.84	.84	.70	.70	.70	.57	.57	.57	.51
1.0	.94	.90	.87	.87	.84	.81	.74	.72	.70	.62	.60	.59	.51	.50	.49	.43
2.0	.83	.77	.72	.77	.72	.68	.66	.62	.59	.55	.53	.50	.46	.44	.42	.38
3.0	.74	.67	.61	.69	.63	.58	.59	.54	.50	.50	.46	.44	.41	.39	.37	.33
4.0	.66	.58	.53	.61	.55	.50	.53	.48	.44	.45	.41	.38	.37	.35	.33	.29
5.0	.59	.52	.46	.55	.49	.43	.48	.43	.39	.41	.37	.34	.34	.31	.29	.26
6.0	.54	.46	.40	.50	.43	.38	.44	.38	.34	.37	.33	.30	.31	.28	.26	.23
7.0	.49	.41	.36	.46	.39	.34	.40	.34	.31	.34	.30	.27	.29	.26	.24	.21
8.0	.45	.37	.32	.42	.35	.31	.37	.31	.27	.32	.27	.24	.27	.24	.22	.19
9.0	.41	.34	.29	.38	.32	.28	.34	.29	.25	.29	.25	.22	.25	.22	.20	.18
10.0	.38	.31	.26	.36	.29	.25	.31	.26	.23	.27	.23	.20	.23	.20	.18	.16



C Range: 0 - 360DEG
 C Interval: 15.0DEG
 Test Speed: HIGH
 Temperature: 25.0DEG
 Operators: Alan Wang
 Test Date: 09 August 2023

γ Range: 0 - 180DEG
 γ Interval: 1.0DEG
 Test System: EVERFINE GO-R5000_V2 SYSTEM V2.00.416
 Humidity: 42.7%
 Test Distance: 2.500m [K=1.0391]
 Remarks:

WEC AND CCEC

Test:U:120.00V I:0.1842A P:21.780W PF:0.9853 Freq:60.00Hz Lamp Flux:450.953x1 lm		
NAME: LED Wall Pack	TYPE:LED	WEIGHT:
SPEC.:ASD-LWS28S-MV-18D22CC-BK_3000K	DIM.:	SERIAL No.:
MFR.: ASD Lighting Corp	SUR.:	Shielding Angle:

ρcc	80%			70%			50%			30%			10%			0
ρw	50%	30%	10%	50%	30%	10%	50%	30%	10%	50%	30%	10%	50%	30%	10%	0
ρfc	20%			20%			20%			20%			20%			0
RCR	RCR:Room Cavity Ratio						Wall Exitance Coefficients(WEC)									
0.0																
1.0	.269	.153	.048	.247	.141	.045	.206	.118	.038	.168	.097	.031	.134	.077	.025	
2.0	.247	.136	.042	.228	.125	.039	.190	.106	.033	.156	.087	.027	.124	.070	.022	
3.0	.228	.122	.036	.210	.113	.034	.176	.096	.029	.145	.079	.024	.116	.064	.020	
4.0	.212	.110	.032	.195	.102	.030	.164	.087	.026	.135	.072	.022	.108	.059	.018	
5.0	.197	.100	.029	.182	.093	.027	.153	.080	.023	.126	.067	.020	.101	.054	.016	
6.0	.184	.092	.026	.170	.086	.025	.143	.073	.021	.118	.061	.018	.095	.050	.015	
7.0	.172	.085	.024	.159	.079	.023	.134	.068	.020	.111	.057	.017	.090	.047	.014	
8.0	.161	.079	.022	.149	.073	.021	.126	.063	.018	.105	.053	.015	.085	.043	.013	
9.0	.152	.073	.021	.141	.069	.019	.119	.059	.017	.099	.050	.014	.080	.041	.012	
10.0	.143	.069	.019	.133	.064	.018	.113	.055	.016	.094	.047	.013	.076	.038	.011	

ρcc	80%			70%			50%			30%			10%			0
ρw	50%	30%	10%	50%	30%	10%	50%	30%	10%	50%	30%	10%	50%	30%	10%	0
ρfc	20%			20%			20%			20%			20%			0
RCR	RCR:Room Cavity Ratio						Ceiling Cavity Exitance Coefficients(CCEC)									
0.0	.567	.567	.567	.485	.485	.485	.331	.331	.331	.190	.190	.190	.061	.061	.061	
1.0	.557	.536	.517	.477	.460	.445	.326	.317	.308	.188	.183	.179	.060	.059	.058	
2.0	.549	.514	.486	.470	.443	.420	.322	.306	.293	.186	.178	.172	.060	.058	.056	
3.0	.541	.498	.465	.464	.430	.403	.318	.299	.283	.184	.174	.167	.059	.057	.055	
4.0	.534	.486	.450	.458	.420	.391	.315	.293	.275	.182	.171	.163	.059	.056	.054	
5.0	.527	.477	.440	.453	.412	.382	.312	.288	.270	.181	.169	.160	.058	.055	.053	
6.0	.521	.469	.432	.448	.406	.376	.309	.284	.266	.179	.167	.158	.058	.055	.052	
7.0	.515	.463	.426	.443	.401	.372	.306	.281	.263	.178	.166	.157	.057	.054	.052	
8.0	.509	.458	.422	.438	.397	.368	.303	.279	.261	.176	.164	.156	.057	.054	.052	
9.0	.504	.453	.419	.434	.393	.365	.301	.276	.259	.175	.163	.155	.057	.054	.051	
10.0	.499	.449	.416	.430	.390	.363	.299	.275	.258	.174	.162	.154	.056	.053	.051	

C Range: 0 - 360DEG
 C Interval: 15.0DEG
 Test Speed: HIGH
 Temperature: 25.0DEG
 Operators: Alan Wang
 Test Date: 09 August 2023

γ Range: 0 - 180DEG
 γ Interval: 1.0DEG
 Test System: EVERFINE GO-R5000_V2 SYSTEM V2.00.416
 Humidity: 42.7%
 Test Distance: 2.500m [K=1.0391]
 Remarks:

UGR(Unified Glare Rating) Table

Test:U:120.00V I:0.1842A P:21.780W PF:0.9853 Freq:60.00Hz Lamp Flux:450.953x1 lm										
NAME: LED Wall Pack					TYPE:LED			WEIGHT:		
SPEC.:ASD-LWS28S-MV-18D22CC-BK_3000K					DIM.:			SERIAL No.:		
MFR.: ASD Lighting Corp					SUR.:			Shielding Angle:		
ceiling/cavity	0.7	0.7	0.5	0.5	0.3	0.7	0.7	0.5	0.5	0.3
walls	0.5	0.3	0.5	0.3	0.3	0.5	0.3	0.5	0.3	0.3
working plane	0.2	0.2	0.2	0.2	0.2	0.2	0.2	0.2	0.2	0.2
Room dimensions	Viewed crosswise					Viewed endwise				
x = 2H y = 2H	11.7	12.6	12.5	13.4	14.5	10.7	11.6	11.5	12.4	13.5
3H	12.8	13.6	13.7	14.5	15.6	11.8	12.6	12.7	13.5	14.6
4H	13.2	13.9	14.1	14.8	15.9	12.3	13.1	13.2	14.0	15.1
6H	13.6	14.3	14.5	15.2	16.4	13.0	13.6	13.9	14.5	15.7
8H	13.9	14.6	14.8	15.5	16.6	13.4	14.0	14.3	14.9	16.1
12H	14.3	14.9	15.2	15.8	17.0	14.0	14.6	14.9	15.5	16.7
4H 2H	11.9	12.6	12.8	13.5	14.6	11.1	11.8	12.0	12.7	13.8
3H	13.2	13.8	14.1	14.7	15.9	12.4	13.0	13.3	13.9	15.1
4H	13.7	14.2	14.6	15.2	16.4	13.0	13.6	14.0	14.5	15.7
6H	14.2	14.7	15.2	15.7	16.9	13.8	14.3	14.8	15.3	16.5
8H	14.6	15.1	15.6	16.1	17.3	14.3	14.8	15.3	15.7	17.0
12H	15.1	15.5	16.1	16.5	17.8	15.1	15.5	16.1	16.5	17.7
8H 4H	13.7	14.2	14.7	15.2	16.4	13.2	13.7	14.2	14.6	15.9
6H	14.5	14.9	15.5	15.9	17.2	14.2	14.6	15.2	15.6	16.9
8H	15.1	15.4	16.1	16.4	17.7	14.9	15.2	15.9	16.2	17.6
12H	15.8	16.1	16.8	17.1	18.4	15.9	16.2	17.0	17.2	18.6
12H 4H	13.7	14.2	14.7	15.1	16.4	13.2	13.6	14.2	14.6	15.9
6H	14.6	14.9	15.6	15.9	17.2	14.3	14.6	15.3	15.6	17.0
8H	15.3	15.5	16.3	16.5	17.9	15.1	15.4	16.1	16.4	17.7
Variations with the observer position at spacings:										
S = 1.0H	+ 0.2 / - 0.2					+ 0.2 / - 0.2				
1.5H	+ 0.2 / - 0.3					+ 0.1 / - 0.2				
2.0H	+ 0.4 / - 0.4					+ 0.1 / - 0.2				

CIE Pub.117, 451.0 lm Total Lamp Luminous Flux Corrected (8log(F/F0) = -2.8)
 Area: 0.04032 m2

C Range: 0 - 360DEG
 C Interval: 15.0DEG
 Test Speed: HIGH
 Temperature: 25.0DEG
 Operators: Alan Wang
 Test Date: 09 August 2023

γ Range: 0 - 180DEG
 γ Interval: 1.0DEG
 Test System: EVERFINE GO-R5000_V2 SYSTEM V2.00.416
 Humidity: 42.7%
 Test Distance: 2.500m [K=1.0391]
 Remarks:

UTILIZATION FACTORS TABLE

Test:U:120.00V I:0.1842A P:21.780W PF:0.9853 Freq:60.00Hz Lamp Flux:450.953x1 lm		
NAME: LED Wall Pack	TYPE:LED	WEIGHT:
SPEC.:ASD-LWS28S-MV-18D22CC-BK_3000K	DIM.:	SERIAL No.:
MFR.: ASD Lighting Corp	SUR.:	Shielding Angle:

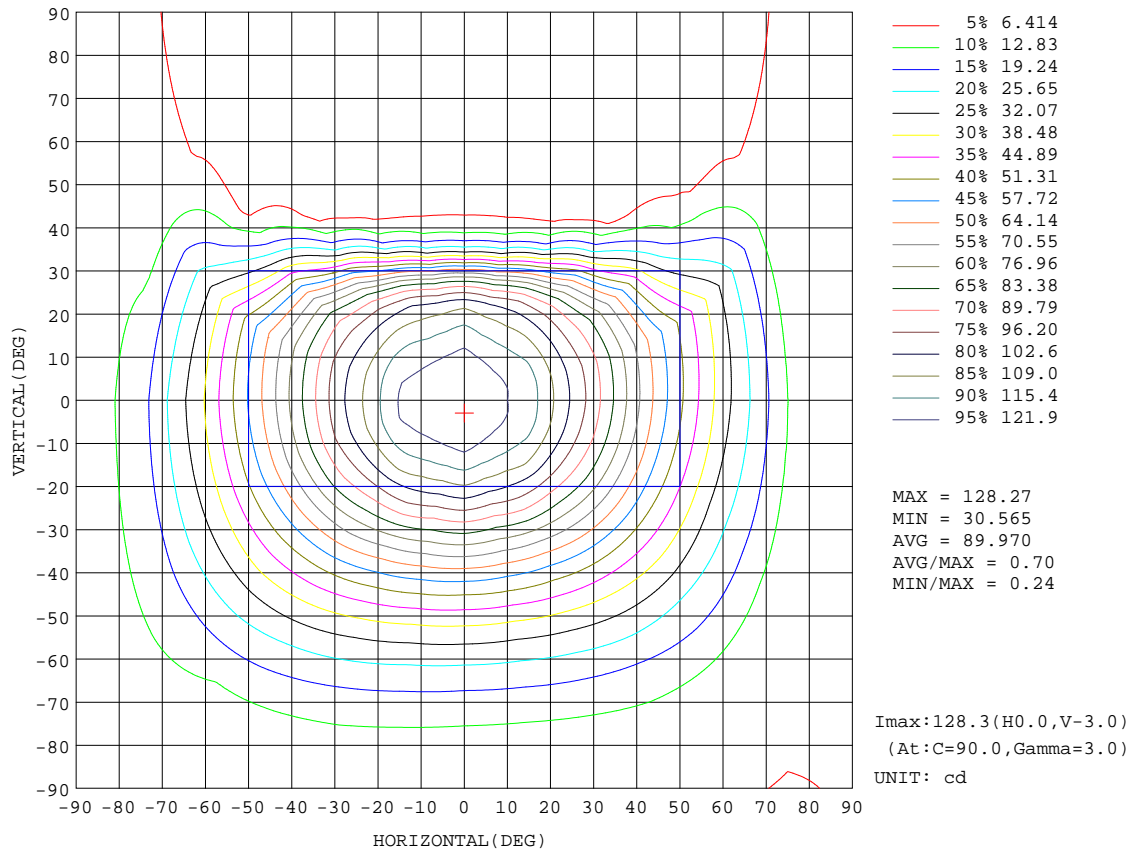
REFLECTANCE										
Ceiling	0.8	0.8	0.8	0.7	0.7	0.7	0.5	0.5	0.5	0
Walls	0.7	0.5	0.3	0.7	0.5	0.3	0.7	0.5	0.3	0
Working plane	0.2	0.2	0.2	0.2	0.2	0.2	0.2	0.2	0.2	0
ROOM INDEX	UTILIZATION FACTORS(PERCENT) $k(RI) \times RCR = 5$									
k = 0.60	49	39	33	46	37	32	42	34	30	23
0.80	58	47	41	55	45	39	49	41	37	27
1.00	65	55	48	61	52	46	54	48	42	31
1.25	72	61	55	67	58	52	59	52	47	34
1.50	76	67	60	71	63	57	62	56	51	36
2.00	83	74	68	77	70	64	67	61	57	39
2.50	87	79	73	81	74	69	69	64	61	40
3.00	90	83	77	83	77	72	71	67	64	42
4.00	94	88	83	87	82	78	74	71	68	44
5.00	96	91	87	89	85	81	76	73	70	45
ROOM INDEX	UF(total)									Direct
According to DIN EN 13032-2 2004			Suspended				SHRNOM = 1.25			

C Range: 0 - 360DEG
 C Interval: 15.0DEG
 Test Speed: HIGH
 Temperature: 25.0DEG
 Operators: Alan Wang
 Test Date: 09 August 2023

γ Range: 0 - 180DEG
 γ Interval: 1.0DEG
 Test System: EVERFINE GO-R5000_V2 SYSTEM V2.00.416
 Humidity: 42.7%
 Test Distance: 2.500m [K=1.0391]
 Remarks:

ISOCANDELA DIAGRAM

Test:U:120.00V I:0.1842A P:21.780W PF:0.9853 Freq:60.00Hz Lamp Flux:450.953x1 lm		
NAME: LED Wall Pack	TYPE:LED	WEIGHT:
SPEC.:ASD-LWS28S-MV-18D22CC-BK_3000K	DIM.:	SERIAL No.:
MFR.: ASD Lighting Corp	SUR.:	Shielding Angle:



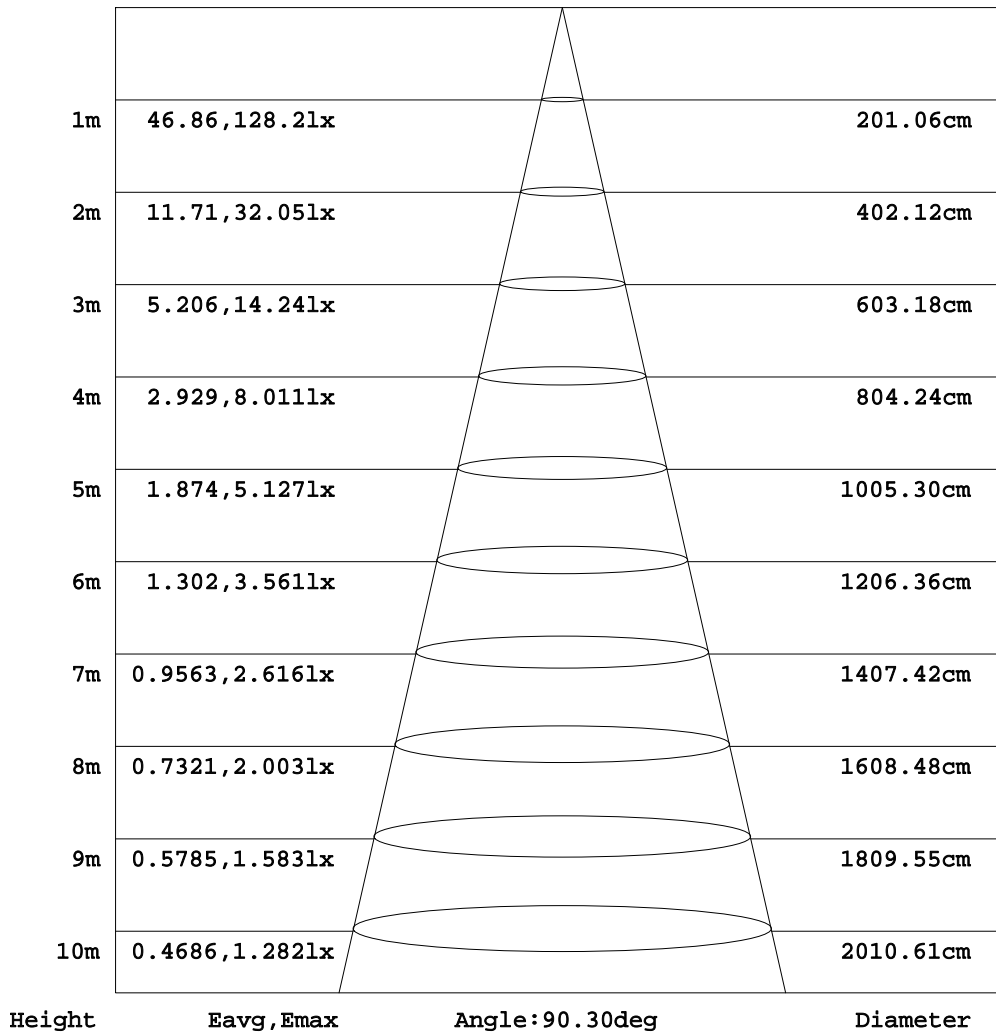
C Range: 0 - 360DEG
 C Interval: 15.0DEG
 Test Speed: HIGH
 Temperature: 25.0DEG
 Operators:Alan Wang
 Test Date:09 August 2023

γ Range: 0 - 180DEG
 γ Interval: 1.0DEG
 Test System:EVERFINE GO-R5000_V2 SYSTEM V2.00.416
 Humidity: 42.7%
 Test Distance:2.500m [K=1.0391]
 Remarks:

AAI Figure

Test:U:120.00V I:0.1842A P:21.780W PF:0.9853 Freq:60.00Hz Lamp Flux:450.953x1 lm		
NAME: LED Wall Pack	TYPE:LED	WEIGHT:
SPEC.:ASD-LWS28S-MV-18D22CC-BK_3000K	DIM.:	SERIAL No.:
MFR.: ASD Lighting Corp	SUR.:	Shielding Angle:

Flux out:157.8 lm



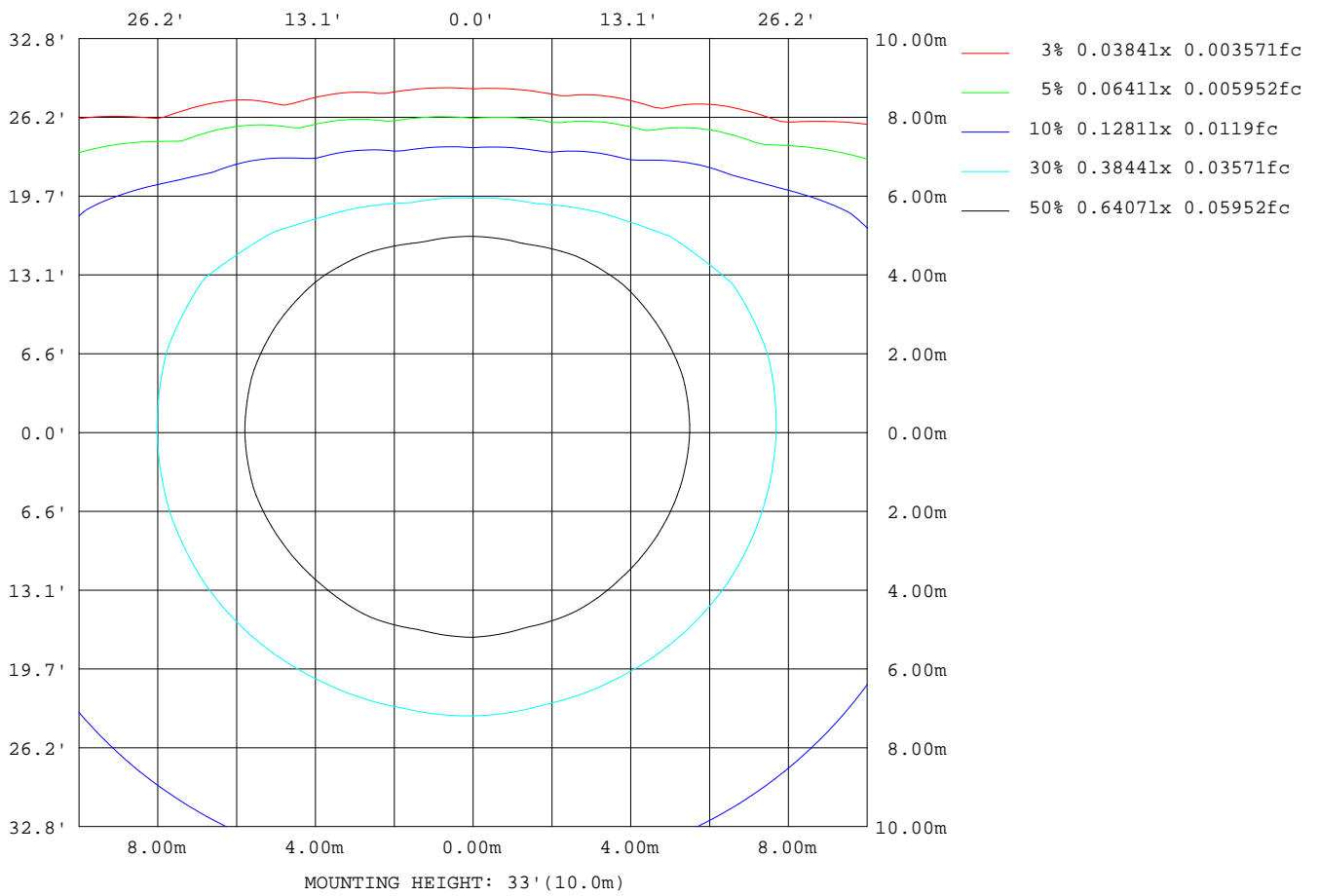
Note:The Curves indicate the illuminated area and the average illumination when the luminaire is at different distance.

C Range: 0 - 360DEG
 C Interval: 15.0DEG
 Test Speed: HIGH
 Temperature: 25.0DEG
 Operators:Alan Wang
 Test Date:09 August 2023

γ Range: 0 - 180DEG
 γ Interval: 1.0DEG
 Test System:EVERFINE GO-R5000_V2 SYSTEM V2.00.416
 Humidity: 42.7%
 Test Distance:2.500m [K=1.0391]
 Remarks:

ISOLUX DIAGRAM

Test:U:120.00V I:0.1842A P:21.780W PF:0.9853 Freq:60.00Hz Lamp Flux:450.953x1 lm		
NAME: LED Wall Pack	TYPE:LED	WEIGHT:
SPEC.:ASD-LWS28S-MV-18D22CC-BK_3000K	DIM.:	SERIAL No.:
MFR.: ASD Lighting Corp	SUR.:	Shielding Angle:



C Range: 0 - 360DEG
 C Interval: 15.0DEG
 Test Speed: HIGH
 Temperature: 25.0DEG
 Operators: Alan Wang
 Test Date: 09 August 2023

γ Range: 0 - 180DEG
 γ Interval: 1.0DEG
 Test System: EVERFINE GO-R5000_V2 SYSTEM V2.00.416
 Humidity: 42.7%
 Test Distance: 2.500m [K=1.0391]
 Remarks:

LED Avg.L Report

Test:U:120.00V I:0.1842A P:21.780W PF:0.9853 Freq:60.00Hz Lamp Flux:450.953x1 lm		
NAME: LED Wall Pack	TYPE:LED	WEIGHT:
SPEC.:ASD-LWS28S-MV-18D22CC-BK_3000K	DIM.:	SERIAL No.:
MFR.: ASD Lighting Corp	SUR.:	Shielding Angle:

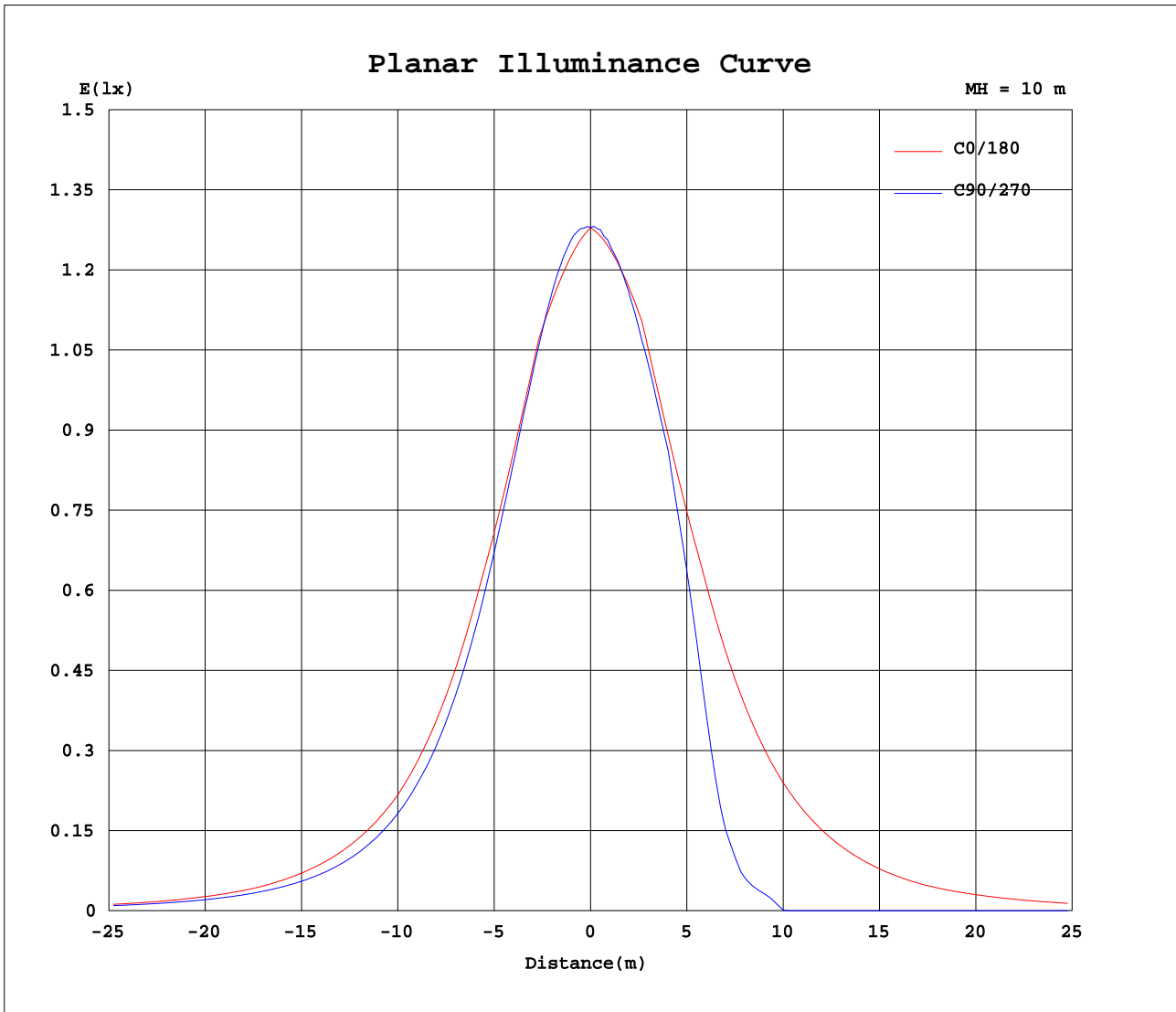
AvgL	cd/m2
L_0~180(65)av	1729
L_0~180(75)av	1404
L_0~180(85)av	2733
L_90~270(65)av	634
L_90~270(75)av	630
L_90~270(85)av	1474
L_45(65)av	756
L_45(75)av	728
L_45(85)av	1484

Standard: GB/T 29293-2012

C Range: 0 - 360DEG
C Interval: 15.0DEG
Test Speed: HIGH
Temperature: 25.0DEG
Operators: Alan Wang
Test Date: 09 August 2023

γ Range: 0 - 180DEG
 γ Interval: 1.0DEG
Test System: EVERFINE GO-R5000_V2 SYSTEM V2.00.416
Humidity: 42.7%
Test Distance: 2.500m [K=1.0391]
Remarks:

Planar Illuminance Curve



C Range: 0 - 360DEG
 C Interval: 15.0DEG
 Test Speed: HIGH
 Temperature: 25.0DEG
 Operators: Alan Wang
 Test Date: 09 August 2023

γ Range: 0 - 180DEG
 γ Interval: 1.0DEG
 Test System: EVERFINE GO-R5000_V2 SYSTEM V2.00.416
 Humidity: 42.7%
 Test Distance: 2.500m [K=1.0391]
 Remarks:

LUMINOUS DISTRIBUTION INTENSITY DATA

Test:U:120.00V I:0.1842A P:21.780W PF:0.9853 Freq:60.00Hz Lamp Flux:450.953x1 lm		
NAME: LED Wall Pack	TYPE:LED	WEIGHT:
SPEC.:ASD-LWS28S-MV-18D22CC-BK_3000K	DIM.:	SERIAL No.:
MFR.: ASD Lighting Corp	SUR.:	Shielding Angle:

Table--1

UNIT: cd

C(DEG) γ (DEG)	0	15	30	45	60	75	90	105	120	135	150	165	180	195	210	225	240	255	270
0	128	128	128	128	128	128	128	128	128	128	128	128	128	128	128	128	128	128	128
5	125	125	125	126	126	127	128	127	127	127	126	126	126	126	126	126	126	126	127
10	122	122	122	122	122	123	124	123	123	124	124	124	124	124	124	123	123	123	124
15	119	119	117	116	115	116	118	117	117	119	121	122	122	122	120	119	118	117	118
20	110	110	110	110	107	107	109	108	109	113	114	115	115	115	114	113	111	110	111
25	102	101	99.7	98.8	97.6	95.7	97.5	97.1	100	103	104	106	107	107	105	104	102	96.1	96.0
30	93.1	91.7	89.7	87.5	86.5	84.1	85.4	85.5	89.3	91.6	94.9	98.0	99.0	99.0	96.7	92.6	83.3	69.7	66.5
35	82.5	81.1	79.3	76.4	74.3	72.5	73.5	74.0	77.2	80.8	85.0	87.6	88.6	89.0	87.0	74.8	51.3	32.0	27.8
40	72.0	70.3	68.4	65.9	62.9	61.5	61.9	63.0	65.8	70.3	73.8	77.0	78.2	78.8	74.2	50.2	20.8	11.9	10.5
45	61.4	59.8	57.9	55.5	52.8	51.6	51.6	52.9	55.6	59.7	63.3	66.4	67.8	68.7	57.5	23.7	8.02	3.32	0.38
50	52.6	50.3	48.1	45.9	43.6	42.1	42.3	43.5	46.4	50.0	53.4	56.5	58.2	58.5	38.5	9.19	0.13	0.04	0.04
55	43.7	41.2	39.6	37.3	35.3	34.1	34.3	35.3	37.8	41.3	44.6	46.9	48.6	47.9	21.2	1.22	0.08	0.04	0.04
60	34.8	32.2	31.4	29.9	28.2	27.2	27.4	28.3	30.4	33.2	36.2	37.6	38.9	36.9	9.17	1.18	0.03	0.03	0.03
65	27.5	25.1	24.1	23.3	22.2	21.5	21.6	22.5	24.2	26.0	28.4	30.1	31.4	27.2	3.87	1.21	0.04	0.03	0.02
70	20.2	18.5	18.3	17.7	17.0	16.7	16.8	17.5	18.7	20.0	21.7	23.3	23.9	18.3	3.87	1.21	0.03	0.03	0.02
75	12.9	12.0	12.7	13.2	13.0	12.9	13.1	13.7	14.3	14.9	15.3	16.3	16.5	10.0	3.92	1.21	0.03	0.03	0.02
80	10.8	9.71	9.76	9.61	10.4	10.5	10.7	10.9	11.1	10.7	11.5	12.7	13.4	8.64	3.94	1.23	0.03	0.03	0.02
85	8.82	7.88	8.53	9.06	9.36	10.1	10.3	10.1	9.67	9.64	9.44	9.56	10.4	8.05	3.94	1.20	0.03	0.04	0.02
90	6.80	6.04	7.30	8.56	9.48	10.3	10.6	10.4	9.64	8.60	7.36	6.46	7.35	7.52	3.97	1.22	0.03	0.04	0.03
95	9.35	8.32	8.87	9.24	9.47	10.2	10.4	10.2	9.66	9.24	8.88	8.64	9.77	8.11	3.93	1.18	0.03	0.03	0.02
100	11.9	10.6	10.5	9.97	10.6	10.6	10.6	10.8	10.8	9.95	10.4	10.8	12.2	8.74	3.96	1.19	0.03	0.03	0.02
105	14.5	13.3	13.7	13.9	13.3	13.0	13.0	13.2	13.6	13.9	13.6	13.5	14.6	10.1	4.00	1.18	0.03	0.02	0.02
110	21.6	20.0	19.5	18.7	17.7	17.1	17.0	17.3	18.0	18.7	19.4	20.0	21.5	17.4	4.05	1.19	0.03	0.02	0.02
115	28.7	26.7	25.6	24.5	23.3	22.4	22.1	22.6	23.5	24.5	25.4	26.6	28.5	25.2	4.16	1.19	0.04	0.02	0.02
120	35.8	33.7	32.8	31.2	29.4	28.2	28.1	28.3	29.6	31.2	32.5	33.6	35.4	33.9	10.1	1.18	0.04	0.03	0.02
125	44.7	42.3	40.7	38.6	36.4	35.0	34.9	35.1	36.7	38.6	40.4	42.2	44.4	44.3	22.4	2.60	0.09	0.04	0.03
130	53.6	51.0	48.9	46.6	44.5	42.8	42.5	43.0	44.7	46.7	48.8	50.9	53.3	54.2	38.2	12.2	2.72	0.19	0.05
135	62.6	59.9	57.9	55.5	52.9	51.5	51.0	51.7	53.2	55.5	57.8	59.9	62.3	63.6	54.6	28.5	11.5	7.56	6.84
140	72.2	69.5	67.4	65.1	62.1	60.6	60.5	60.8	62.4	65.3	67.4	69.6	72.0	73.3	69.2	52.0	29.1	18.6	17.2
145	81.9	79.2	77.2	74.5	72.2	70.4	70.8	70.6	72.5	74.7	77.4	79.5	81.8	83.1	81.2	72.1	57.0	44.0	42.3
150	91.5	88.6	86.4	84.0	82.9	80.4	81.2	80.7	83.3	84.4	86.5	89.2	91.5	92.5	90.4	87.0	81.8	73.5	73.5
155	98.8	96.5	95.1	93.8	92.4	90.5	91.7	90.7	92.8	94.2	95.4	97.2	98.9	99.8	98.9	97.5	96.3	93.5	94.9
160	106	105	104	103	101	99.7	101	99.9	101	103	104	105	106	107	107	107	104	104	106
165	113	112	110	109	108	108	109	108	108	109	111	113	114	114	113	112	111	111	113
170	116	115	114	114	113	114	115	114	114	114	115	115	116	116	116	116	116	117	118
175	118	118	118	118	118	118	119	118	118	118	118	118	118	118	118	119	119	119	120
180	120	120	120	120	120	120	120	120	120	120	120	120	120	120	120	120	120	120	120

C Range: 0 - 360DEG
 C Interval: 15.0DEG
 Test Speed: HIGH
 Temperature: 25.0DEG
 Operators: Alan Wang
 Test Date: 09 August 2023

γ Range: 0 - 180DEG
 γ Interval: 1.0DEG
 Test System: EVERFINE GO-R5000_V2 SYSTEM V2.00.416
 Humidity: 42.7%
 Test Distance: 2.500m [K=1.0391]
 Remarks:

LUMINOUS DISTRIBUTION INTENSITY DATA

Test:U:120.00V I:0.1842A P:21.780W PF:0.9853 Freq:60.00Hz Lamp Flux:450.953x1 lm		
NAME: LED Wall Pack	TYPE:LED	WEIGHT:
SPEC.:ASD-LWS28S-MV-18D22CC-BK_3000K	DIM.:	SERIAL No.:
MFR.: ASD Lighting Corp	SUR.:	Shielding Angle:

Table--2

UNIT: cd

C(DEG) γ (DEG)	285	300	315	330	345														
0	128	128	128	128	128														
5	126	126	125	125	125														
10	122	122	121	122	122														
15	116	116	116	118	119														
20	109	109	110	110	111														
25	94.8	99.5	100	101	102														
30	68.7	80.7	88.6	91.3	93.4														
35	31.4	49.8	71.2	81.2	83.3														
40	11.5	19.9	47.6	68.9	73.0														
45	2.80	7.32	22.1	53.2	62.7														
50	0.05	0.10	8.02	35.5	54.2														
55	0.04	0.08	1.10	21.0	45.7														
60	0.04	0.05	1.02	11.7	36.9														
65	0.03	0.05	1.04	7.00	27.7														
70	0.03	0.04	1.01	4.48	18.7														
75	0.03	0.04	0.98	3.53	10.2														
80	0.03	0.04	1.00	3.35	8.76														
85	0.03	0.03	0.96	3.29	8.19														
90	0.04	0.03	0.98	3.28	7.69														
95	0.03	0.03	0.95	3.28	8.46														
100	0.03	0.03	0.99	3.35	9.30														
105	0.03	0.03	0.96	3.43	11.0														
110	0.02	0.03	0.99	3.75	19.6														
115	0.03	0.04	0.98	5.15	28.3														
120	0.03	0.04	1.77	14.1	37.2														
125	0.04	0.11	5.53	28.5	46.3														
130	0.44	5.00	16.9	44.4	55.3														
135	8.53	14.3	35.9	58.6	64.4														
140	20.8	34.7	58.2	70.5	73.8														
145	47.3	61.9	75.5	81.1	83.4														
150	75.4	84.1	87.4	90.2	92.6														
155	94.0	96.4	97.1	98.6	99.8														
160	104	104	106	107	107														
165	111	111	112	113	114														
170	117	116	116	116	116														
175	119	119	119	118	118														
180	120	120	120	120	120														

C Range: 0 - 360DEG
 C Interval: 15.0DEG
 Test Speed: HIGH
 Temperature: 25.0DEG
 Operators: Alan Wang
 Test Date: 09 August 2023

γ Range: 0 - 180DEG
 γ Interval: 1.0DEG
 Test System: EVERFINE GO-R5000_V2 SYSTEM V2.00.416
 Humidity: 42.7%
 Test Distance: 2.500m [K=1.0391]
 Remarks: