



# LED WALL SCONCE

► **DESIGN & OPTIONS** - LED WALL SCONCE has a contemporary design with durable aluminum body and acrylic lens with 215° beam angle for even light distribution. The modern LED dimmers provide smooth dimming capabilities ranging from 10% to 100%. This fixture includes a color selectable option, letting you set it to 2,700K, 3,000K, 3,500K, 4,000K or 5,000K with a simple switch and without removing the fixture from the surface. It comes in either BRUSHED NICKEL or BLACK finishes.

► **INSTALLATION** - Installation is quick and easy: just attach the mounting plate to the outlet box with screws, connect the wires, and fasten the fixture to the mounting plate. Screws, wire nuts, and all necessary installation accessories are provided. Refer to install instructions for detailed steps.

► **APPLICATION** - This LED WALL SCONCE is an ideal maintenance-free solution for residential and commercial installations. It creates a cozy ambience that is great for your family room, bedroom, hallway, corridor, or any other common area in your living space. It is also suitable for Damp Locations, making it perfect for kitchens and garages as well. It can be used as a complimentary light to an already existing ceiling light.

► **ENERGY SAVINGS & EFFICIENCY** - With a lifespan of 54,000 hours, these fixtures are made to last decades under normal operation! This fixture can cut your electric bill by up to 80% instantly and will save you a significant amount of money in its lifetime.

► **CERTIFICATION & WARRANTY** - Buy with confidence: ASD provides a 5-year limited warranty along with UL certification to guarantee top quality products and safety!

Catalog number	
Notes	
Type	



Model	Size	Watts	Voltage	Dimmable	Lumens	CCT	Finish	Dimensions (LxWxH)
ASD-LWS12-D12AC-NK	12 inch	12W	120 V	TRIAC	799/834/856/861/855 lm	5CCT (2,700/3,000/3,500/4,000/5,000 K)	Brushed nickel	4-3/4" x 1-3/4" x 11-7/8"
ASD-LWS12-D12AC-BK	12 inch	12W	120 V	TRIAC	799/834/856/861/855 lm	5CCT (2,700/3,000/3,500/4,000/5,000 K)	Black	4-3/4" x 1-3/4" x 11-7/8"

## ORDERING INFORMATION

Model	UPC	Pcs. per carton	Carton size	Carton weight	GTIN 14 in carton
ASD-LWS12-D12AC-NK	810050738590	4	9" x 5.7" x 12.2"	7.5 lb	10810050738597
ASD-LWS12-D12AC-BK	810050738583	4	9" x 5.7" x 12.2"	7.5 lb	10810050738580

For most up-to-date spec sheets please refer to [asd-lighting.com](http://asd-lighting.com)



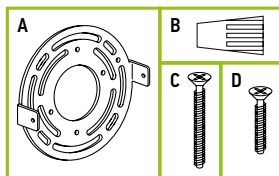
# LED WALL SCONCE

## PRODUCT SPECIFICATIONS:

Construction & Materials				
Housing	Aluminum			
Lens	Acrylic			
Finish	Brushed nickel, black			
Weight	1.4 lb (0.6 kg)			
Environmental system				
Work environment	Suitable for Damp Locations			
Operating temperature	-4°F to 104°F (-20°C to 40°C)			
L-70 Life	> 54,000 hrs			
Optical system				
Luminous flux	799/834/856/861/855 lm			
Color temperature	5CCT (2,700/3,000/3,500/4,000/5,000 K)			
CRI	> 80			
Electrical system				
Input voltage	120 V			
Max input current	0.12 A			
Inrush current (Action time)	40 A (0.01 S)			
Off state power	0W			
Power consumption	12W			
Power factor	> 0.9			
Output voltage	36 V			
Max output current	0.3 A			
Surge protection DM/CM	2.5 kV / 2.5 kV			
Dimming range				
10-100%				
Dimming compatible controls				
Brand	Lutron Leviton			
Models	CTCL-153PDH-WH	S-600PR-WH	DB33K1	6674
	DVW-603PGH-WH	CTCL-153P	1A2305	6672
	MIR-600THW-WH	DV-600P	1F4205	
	MACL-153M-WH	NT-1000	6633-P	
	CT-603PGH-WH	S-603P	VP106	
	DVCL-153P-WH	S-600P	IPL06	
	SLV-600P-WH	4X603	6683	
Regular and voluntary certifications				
5-year limited warranty				
UL certified E473804				

## PACKAGE CONTENTS:

Description	Q-ty
LED Wall Sconce	1
Mounting plate (A)	1
Wire nut (B)	3
Mounting screw (C)	2
Fixture screw (D)	2
Box	1



## INSTALLATION GUIDE

### IMPORTANT SAFETY INFORMATION:

Please read all the instructions below before installation.

- ▶ Make sure that the supply voltage corresponds to the rated product voltage.
- ▶ The product must be installed by a qualified electrician in accordance with the National Electrical Code and corresponding local codes.
- ▶ If the product is damaged, do not use it.

### ⚠ WARNING

**RISK OF PERSONAL INJURY – READ and follow all WARNINGS and installation instructions.** Keep or give to the owner for future reference.

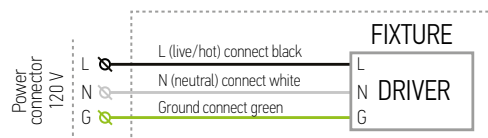
**Risk of cuts:** Wear gloves to prevent cuts or abrasions when removing from carton, handling, installing, and maintaining this product.

**Risk of electric shock:** This product must be installed in accordance with the applicable installation code by a person familiar with the construction and operation of the product and the hazards involved.

**Risk of Fire:** Minimum 194°F supply conductors. Consult a qualified electrician to ensure correct branch circuit conductor.

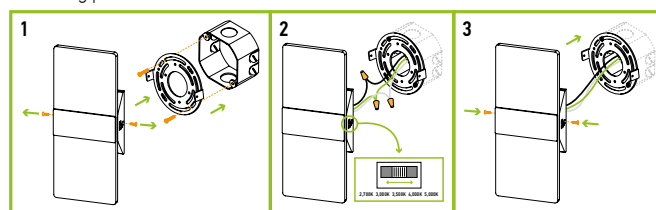
ASD® assumes no responsibility for claims arising out of improper or careless installation or handling of this product.

### ELECTRICAL SCHEMATIC DIAGRAM:



### INSTALLATION STEPS:

1. Unscrew the two fixture screws from both sides of the wall sconce. Remove the mounting plate and attach it to the existing outlet box using two mounting screws.
2. Choose preferred color temperature by adjusting switch position. Connect the wires: Black to Black, White to White, Green to Green. Secure the connection with wire nuts.
3. Fix the wall sconce to the mounting plate using two fixture screws on both sides. Before tightening the screws, align the holes of both the fixture and the mounting plate to ensure a solid fit.



For most up-to-date spec sheets please refer to [asd-lighting.com](http://asd-lighting.com)