



# LED UNDER CABINET LINEAR

► **DESIGN & OPTIONS** - LED UNDER CABINET LINEAR LIGHTS with a CRI 90+ is perfect for a hidden backlight. They have smooth dimming capabilities ranging from 100% to 10% with modern LED dimmers, and the Hi/Lo switch provides 100% and 50% brightness levels. This fixture is also color adjustable letting you go from 2700K, to 3000K, to 4000K with a simple switch. It comes in 9", 12", 18", 24", 32", 40" and 48" sizes with a WHITE finish.

► **INSTALLATION** - These fixtures can be installed as a plug-in or hardwired and also have the option of being linked together or installed separately. For your convenience we provide a 6 ft power cord, 6" linking cord, end-to-end connector, Romex connector, and screws. Refer to install instructions for detailed steps.

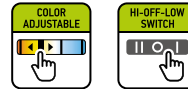
► **APPLICATION** - These LED UNDER CABINET LINEAR LIGHTS are an ideal maintenance-free solution for residential and commercial installations. They create a cozy ambience that is great for your family room, bedroom, cabinet or any other common area in your living space. They are also suitable for Damp locations making them perfect for kitchens as well. You could also use them as a complimentary light to an already existing main light.

► **ENERGY SAVINGS & EFFICIENCY** - Replacing an incandescent fixture with the LED UNDER CABINET LINEAR LIGHT can save you up to 8 times as much on your energy costs. With a lifespan of 50,000 hours, these fixtures are made to last decades under normal operation! This fixture will save you a significant amount of money in its lifetime.

► **CERTIFICATION & WARRANTY** - Buy with confidence: ASD provides a 5-year warranty along with ETL and ENERGY STAR certifications to guarantee top quality products and safety!

Top US certifications allow participation in rebates; please check the rebate programs available in your state.

Catalog number	
Notes	
Type	



## PRODUCT LEGEND:

Family	Size	Dimmable	Watts	CCT	Finish
<b>ASD-UCL</b>	<b>XX</b>	<b>X</b>	<b>X</b>	<b>XX</b>	<b>XX</b>
LED Under Cabinet Linear	9 = 9 inch	D = Dimmable	3 = 3 W	CC = 2,700/3,000/4,000 K	WH = White
	12 = 12 inch		5 = 5 W		
	18 = 18 inch		8 = 8 W		
	24 = 24 inch		12 = 12 W		
	32 = 32 inch		16 = 16 W		
	40 = 40 inch		20 = 20 W		
	48 = 48 inch		24 = 24 W		

## LED UNDER CABINET LINEAR:

Model	Size	Watts	Voltage	Dimmable	Lumens	CCT	Finish	Dimensions (LxWxH)
ASD-UCL-9D3CC-WH	9 inch	3 W	120 V	TRIAC	185 lm	2,700/3,000/4,000 K	White	9" x 3 5/16" x 1 1/8"
ASD-UCL-12D5CC-WH	12 inch	5 W	120 V	TRIAC	297 lm	2,700/3,000/4,000 K	White	12" x 3 5/16" x 1 1/8"
ASD-UCL-18D8CC-WH	18 inch	8 W	120 V	TRIAC	487 lm	2,700/3,000/4,000 K	White	18" x 3 5/16" x 1 1/8"
ASD-UCL-24D12CC-WH	24 inch	12 W	120 V	TRIAC	758 lm	2,700/3,000/4,000 K	White	24" x 3 5/16" x 1 1/8"
ASD-UCL-32D16CC-WH	32 inch	16 W	120 V	TRIAC	1,084 lm	2,700/3,000/4,000 K	White	32" x 3 5/16" x 1 1/8"
ASD-UCL-40D20CC-WH	40 inch	20 W	120 V	TRIAC	1,437 lm	2,700/3,000/4,000 K	White	40" x 3 5/16" x 1 1/8"
ASD-UCL-48D24CC-WH	48 inch	24 W	120 V	TRIAC	1,722 lm	2,700/3,000/4,000 K	White	48" x 3 5/16" x 1 1/8"

For most up-to-date spec sheets please refer to [asd-lighting.com](http://asd-lighting.com)

**ASD LIGHTING CORP**

E-mail: [orders@asd-lighting.com](mailto:orders@asd-lighting.com) | Web site: [www.asd-lighting.com](http://www.asd-lighting.com)






# LED UNDER CABINET LINEAR

## PRODUCT SPECIFICATIONS:

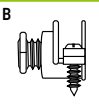
Construction & Materials				
Housing	Aluminum			
Lens	Plastic			
Finish Color	White			
Weight	ASD-UCL-9D3CC-WH	1.1 lb (0.5 kg)	ASD-UCL-32D16CC-WH	2.3 lb (1 kg)
	ASD-UCL-12D5CC-WH	1.3 lb (0.6 kg)	ASD-UCL-40D20CC-WH	2.8 lb (1.3 kg)
	ASD-UCL-18D8CC-WH	1.5 lb (0.7 kg)	ASD-UCL-48D24CC-WH	3.2 lb (1.4 kg)
	ASD-UCL-24D12CC-WH	1.9 lb (0.9 kg)		
Environmental System				
Work Environment	Suitable for Damp Locations			
Operating Temperature	-4°F to 113°F (-20°C to 45°C)			
L-70 Life	> 50,000 hrs			
Optical System				
Luminous Flux	ASD-UCL-9D3CC-WH	185 lm	ASD-UCL-32D16CC-WH	1,084 lm
	ASD-UCL-12D5CC-WH	297 lm	ASD-UCL-40D20CC-WH	1,437 lm
	ASD-UCL-18D8CC-WH	487 lm	ASD-UCL-48D24CC-WH	1,722 lm
	ASD-UCL-24D12CC-WH	758 lm		
Color Temperature	2,700/3,000/4,000 K			
CRI	> 90			
Electrical System				
Input Voltage	120 V			
Max input current	ASD-UCL-9D3CC-WH	0.03 A	ASD-UCL-32D16CC-WH	0.165 A
	ASD-UCL-12D5CC-WH	0.05 A	ASD-UCL-40D20CC-WH	0.21 A
	ASD-UCL-18D8CC-WH	0.082 A	ASD-UCL-48D24CC-WH	0.23 A
	ASD-UCL-24D12CC-WH	0.12 A		
Inrush current (Action time)	ASD-UCL-9D3CC-WH	0.03 A (1 S)	ASD-UCL-32D16CC-WH	0.165 A (1 S)
	ASD-UCL-12D5CC-WH	0.05 A (1 S)	ASD-UCL-40D20CC-WH	0.21 A (1 S)
	ASD-UCL-18D8CC-WH	0.082 A (1 S)	ASD-UCL-48D24CC-WH	0.23 A (1 S)
	ASD-UCL-24D12CC-WH	0.12 A (1 S)		
AC input range	min 108 V max 132 V			
Off State Power	0 W			
Power Consumption	ASD-UCL-9D3CC-WH	3 W	ASD-UCL-32D16CC-WH	16 W
	ASD-UCL-12D5CC-WH	5 W	ASD-UCL-40D20CC-WH	20 W
	ASD-UCL-18D8CC-WH	8 W	ASD-UCL-48D24CC-WH	24 W
	ASD-UCL-24D12CC-WH	12 W		
Power Factor	> 0.9			
Max output current	ASD-UCL-9D3CC-WH	0.024 A	ASD-UCL-32D16CC-WH	0.126 A
	ASD-UCL-12D5CC-WH	0.039 A	ASD-UCL-40D20CC-WH	0.158 A
	ASD-UCL-18D8CC-WH	0.064 A	ASD-UCL-48D24CC-WH	0.19 A
	ASD-UCL-24D12CC-WH	0.095 A		
LED Driver Class	DOB			
Dimming range				
10-100%				
Dimming compatible controls				
Brand	Lutron			
Models	DV-603PG-WH	DV-600P	MACL-153M	
	DVCL-153P	DVL-600P	PD-6WCL-WH	
Regular and Voluntary Certifications				
5-year limited warranty				
cETLus certified				
Energy Star listed				

## PACKAGE CONTENTS:


Description	Q-ty
LED Under Cabinet Linear	1
End-to-End Connector (A)	1
Romex Connection (B)	1
6" Linking cord (C)	1
6 ft Power cord (D)	1
Screws (E)	2
Screw caps (F)	2
Box	1
Cut sheet	2



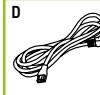
A




B




C



D



E



F

For most up-to-date spec sheets please refer to [asd-lighting.com](http://asd-lighting.com)

ASD LIGHTING CORP

E-mail: [orders@asd-lighting.com](mailto:orders@asd-lighting.com) | Web site: [www.asd-lighting.com](http://www.asd-lighting.com)





# LED UNDER CABINET LINEAR

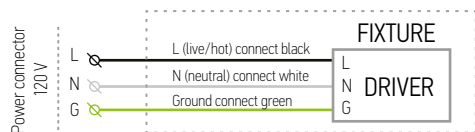
## INSTALLATION GUIDE

### IMPORTANT SAFETY INFORMATION:

Please read all the instructions below before installation.

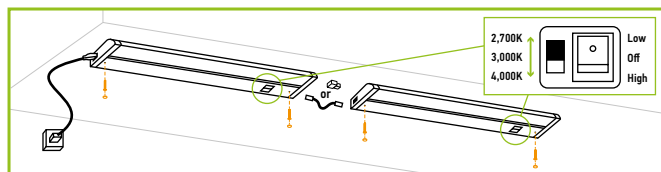
- ▶ Make sure that the supply voltage corresponds to the rated product voltage.
- ▶ The product must be installed by a qualified electrician in accordance with the National Electrical Code and corresponding local codes.
- ▶ If the product is damaged, do not use it.

### ELECTRICAL SCHEMATIC DIAGRAM:



### PLUG-IN INSTALLATION:

1. Attach the fixture to the surface using 2 screws.
2. Multiple fixtures can be linked together with the end to end connector or linking cord.
3. Choose needed color temperature and lighting mode using the switch.



### ⚠ WARNING

**RISK OF PERSONAL INJURY – READ and follow all WARNINGS and installation instructions.**

Keep or give to the owner for future reference.

**Risk of cuts:** Wear gloves to prevent cuts or abrasions when removing from carton, handling, installing, and maintaining this product.

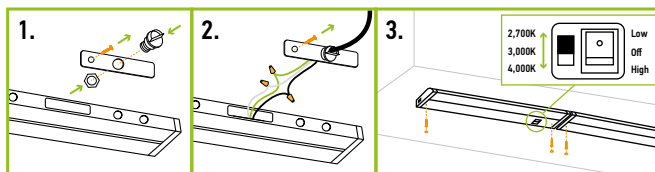
**Risk of electric shock:** This product must be installed in accordance with the applicable installation code by a person familiar with the construction and operation of the product and the hazards involved.

**Risk of Fire:** Minimum 194°F supply conductors. Consult a qualified electrician to ensure correct branch circuit conductor.

ASD® assumes no responsibility for claims arising out of improper or careless installation or handling of this product.

### HARDWARE INSTALLATION:

1. Remove the knock-out. Dismount adapter plate by loosening screw. Insert the romex connector into the open hole and secure it with the wire nut.
2. Connect the wires: Black to Black, White to White, Green to Green using quick connectors. Tuck all the wires into the fixture and reattach the adapter plate by tightening the screw.
3. Attach the fixture to the surface using 2 screws. Multiple fixtures can be linked together with the end to end connector or linking cord. Choose needed color temperature and lighting mode using the switch.



Model Name	ASD-UCL-9D3CC-WH	ASD-UCL-12D5CC-WH	ASD-UCL-18D8CC-WH	ASD-UCL-24D12CC-WH	ASD-UCL-32D16CC-WH	ASD-UCL-40D20CC-WH	ASD-UCL-48D24CC-WH
Linkable Quantities	66 pcs	40 pcs	25 pcs	16 pcs	12 pcs	10 pcs	8 pcs

## ORDERING INFORMATION

### LED UNDER CABINET LINEAR:

Model	Size	Watts	Lumens	Finish	UPC
ASD-UCL-9D3CC-WH	9 inch	3 W	185 lm	White	810050734196
ASD-UCL-12D5CC-WH	12 inch	5 W	297 lm	White	810050734202
ASD-UCL-18D8CC-WH	18 inch	8 W	487 lm	White	810050734226
ASD-UCL-24D12CC-WH	24 inch	12 W	758 lm	White	810050734240
ASD-UCL-32D16CC-WH	32 inch	16 W	1,084 lm	White	810050734264
ASD-UCL-40D20CC-WH	40 inch	20 W	1,437 lm	White	810050734271
ASD-UCL-48D24CC-WH	48 inch	24 W	1,722 lm	White	810050734288

Model	Pcs in middle box	Middle box Size	Middle box Weight	GTIN 14 for Middle box	Pcs. per Carton	Carton Size	Carton Weight	GTIN 14 for Carton
ASD-UCL-9D3CC-WH	4	14.4" x 3.3" x 8.5"	5.3 lb	10810050734193	20	18.9" x 15.2" x 9.3"	21.2 lb	30810050734197
ASD-UCL-12D5CC-WH	-	-	-	-	20	17.3" x 15.6" x 8.5"	30.9 lb	10810050734209
ASD-UCL-18D8CC-WH	-	-	-	-	20	23.2" x 15.6" x 8.5"	35.3 lb	10810050734223
ASD-UCL-24D12CC-WH	-	-	-	-	20	29.3" x 14" x 10.4"	44.1 lb	10810050734247
ASD-UCL-32D16CC-WH	4	37.2" x 7.9" x 4.5"	9.7 lb	10810050734261	12	38" x 12" x 10.4"	29.1 lb	20810050734268
ASD-UCL-40D20CC-WH	4	45.3" x 7.9" x 4.5"	12.3 lb	10810050734278	12	46.1" x 12" x 10.4"	37 lb	20810050734275
ASD-UCL-48D24CC-WH	4	53.3" x 7.9" x 4.5"	13.2 lb	10810050734285	12	54.1" x 12" x 10.4"	39.7 lb	20810050734282

### ACCESSORIES:

Model	Description	Finish	Materials	Dimensions	Weight	Pcs. per Carton	Carton Size	Carton Weight	UPC
ASD-PCD-UCS-10pack	Power Cord 6 ft	White	Plastic + Copper	72"	0.3 lb	10	11.8" x 9.8"	3.3 lb	810050733731
ASD-LCD-UCS-10pack	Linking Cord 6"	White	Plastic + Copper	6"	0.04 lb	10	11.8" x 9.8"	0.4 lb	810050733748
ASD-RCR-UCS-10pack	Romex Connector	Nickel	Plastic + Copper	1 1/8" x 13/16"	0.07 lb	10	5.9" x 3.5"	0.7 lb	810050733755
ASD-ECR-UCS-10pack	End-to-end Connector	White	Plastic + Copper	7/8" x 11/16" x 7/16"	0.02 lb	10	5.9" x 3.5"	0.3 lb	810050733762

For most up-to-date spec sheets please refer to [asd-lighting.com](http://asd-lighting.com)

ASD LIGHTING CORP

E-mail: [orders@asd-lighting.com](mailto:orders@asd-lighting.com) | Web site: [www.asd-lighting.com](http://www.asd-lighting.com)

