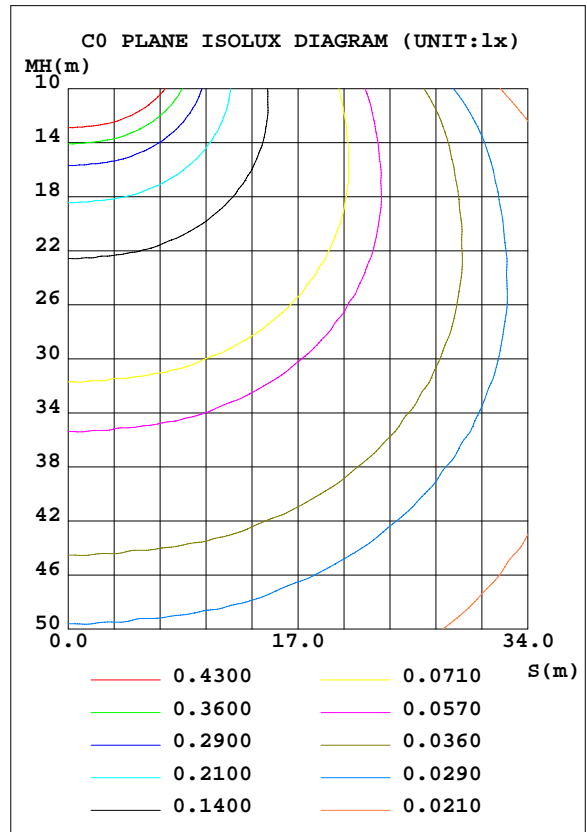
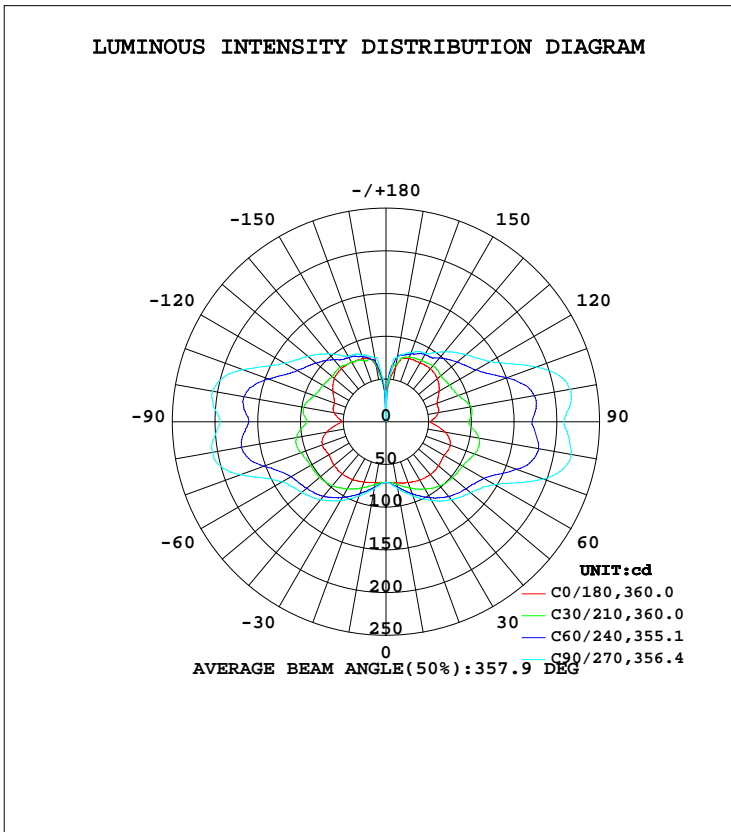


LUMINAIRE PHOTOMETRIC TEST REPORT

Test:U:277.00V I:0.0821A P:19.180W PF:0.8435 Freq:60.00Hz Lamp Flux:1404.86x1 lm		
NAME:	TYPE:LED	WEIGHT:
SPEC.:	DIM.:	SERIAL No.:
MFR.: ASD Lighting corp	SUR.:	Shielding Angle:

DATA OF LAMP		PHOTOMETRIC DATA Eff: 73.25 lm/W			
MODEL	ASD-LWS27-MV-18D18CC-BK	I <sub>max</sub> (cd)	220.3	S/MH(C0/180)	1.68
NOMINAL POWER(W)	18	LOR(%)	100.0	S/MH(C90/270)	2.33
RATED VOLTAGE(V)	120-277	TOTAL FLUX(lm)	1404.9	η UP, DN(C0-180)	24.4,26.4
NOMINAL FLUX(lm)	1404.86	CIE CLASS	DIFFUSE	η UP, DN(C180-360)	23.5,25.7
LAMPS INSIDE	1	η up(%)	47.9	CIBSE SHR NOM	2.00
TEST VOLTAGE(V)	277	η down(%)	52.1	CIBSE SHR MAX	2.00



C Range: 0 - 360DEG  
 C Interval: 15.0DEG  
 Test Speed: HIGH  
 Temperature: 25.0DEG  
 Operators: Alan Wang  
 Test Date: 08 May 2023

γ Range: 0 - 180DEG  
 γ Interval: 1.0DEG  
 Test System: EVERFINE GO-R5000\_V2 SYSTEM V2.00.416  
 Humidity: 42.1%  
 Test Distance: 2.500m [K=1.0390]  
 Remarks:

## ZONAL FLUX DIAGRAM

## ZONAL FLUX DIAGRAM:

$\gamma$	C0	C45	C90	C135	C180	C225	C270	C315	$\gamma$	$\Phi$ zone	$\Phi$ total	%lum,lamp
10	72.69	76.11	78.94	75.93	72.13	76.49	79.31	76.01	0- 10	7.021	7.021	0.50,0.50
20	75.66	87.00	92.50	86.00	75.26	86.64	92.36	86.16	10- 20	22.92	29.94	2.13,2.13
30	78.82	97.33	106.5	96.42	78.06	97.14	106.6	96.81	20- 30	41.84	71.79	5.11,5.11
40	80.92	107.2	119.1	105.7	79.55	106.7	119.2	105.7	30- 40	62.58	134.4	9.56,9.56
50	80.32	113.2	129.7	111.4	79.43	112.5	128.8	110.7	40- 50	82.51	216.9	15.4,15.4
60	78.69	118.2	147.4	115.2	77.64	115.5	140.8	114.4	50- 60	99.84	316.7	22.5,22.5
70	80.15	134.0	196.1	128.4	79.24	126.4	180.8	124.0	60- 70	121.6	438.3	31.2,31.2
80	70.33	142.9	220.3	136.4	70.54	136.6	206.0	131.1	70- 80	147.1	585.4	41.7,41.7
90	52.22	132.7	207.8	125.6	51.83	125.2	193.7	119.3	80- 90	146.6	732.0	52.1,52.1
100	62.27	136.1	218.7	130.6	61.82	130.8	205.8	123.9	90-100	144.3	876.3	62.4,62.4
110	63.60	118.1	187.5	115.3	64.12	115.8	178.0	109.0	100-110	136.1	1012	72.1,72.1
120	71.97	103.8	141.5	102.9	71.68	102.9	137.2	98.73	110-120	108.9	1121	79.8,79.8
130	78.69	96.32	122.4	96.26	79.02	95.19	119.3	92.42	120-130	89.46	1211	86.2,86.2
140	80.95	88.26	106.9	88.17	81.43	86.16	104.0	84.63	130-140	72.73	1284	91.4,91.4
150	79.64	87.87	92.48	86.26	80.04	84.82	88.70	84.71	140-150	55.06	1339	95.3,95.3
160	78.64	82.33	86.04	81.12	78.75	78.46	82.69	82.07	150-160	38.64	1377	98,98
170	65.17	72.81	76.35	70.21	66.02	66.61	76.43	74.11	160-170	22.06	1399	99.6,99.6
180	38.10	31.25	0	30.08	39.13	33.12	12.42	27.25	170-180	5.595	1405	100,100
DEG	LUMINOUS INTENSITY:cd									UNIT:lm		

Conical surface Flux(90deg): 173.3 lm

%lum = 12.3%

%lamp = 12.3%

Conical surface Flux(120deg): 316.71 lm

%lum = 22.5%

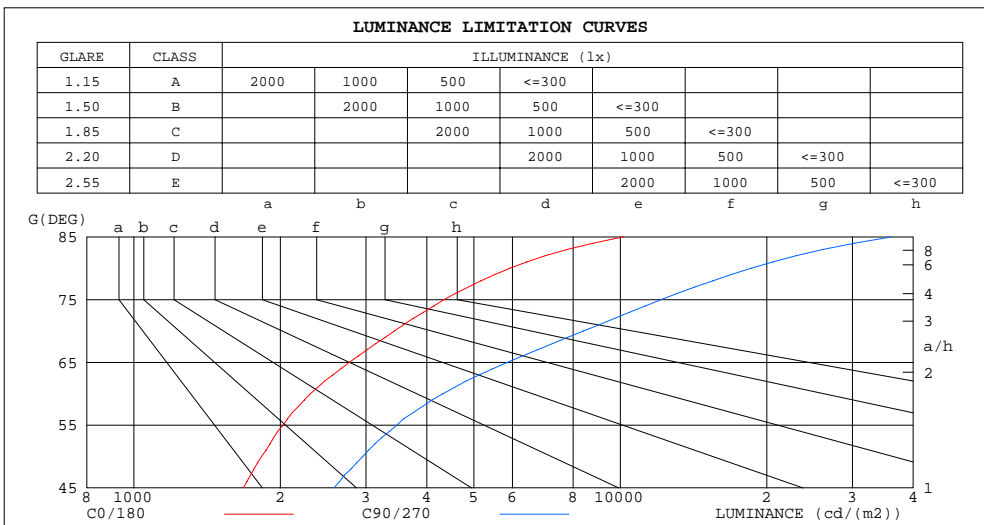
%lamp = 22.5%

C Range: 0 - 360DEG  
 C Interval: 15.0DEG  
 Test Speed: HIGH  
 Temperature: 25.0DEG  
 Operators: Alan Wang  
 Test Date: 08 May 2023

$\gamma$  Range: 0 - 180DEG  
 $\gamma$  Interval: 1.0DEG  
 Test System: EVERFINE GO-R5000\_V2 SYSTEM V2.00.416  
 Humidity: 42.1%  
 Test Distance: 2.500m [K=1.0390]  
 Remarks:

LUMINANCE LIMITATION CURVES

Test:U:277.00V I:0.0821A P:19.180W PF:0.8435 Freq:60.00Hz Lamp Flux:1404.86x1 lm		
NAME:	TYPE:LED	WEIGHT:
SPEC.:	DIM.:	SERIAL No.:
MFR.: ASD Lighting corp	SUR.:	Shielding Angle:



LUMINANCE cd/(m2)		
G(DEG)	C0/180	C90/270
85	10149	36144
80	5934	18590
75	4343	12137
70	3433	8400
65	2773	5860
60	2306	4320
55	2028	3471
50	1831	2956
45	1679	2578

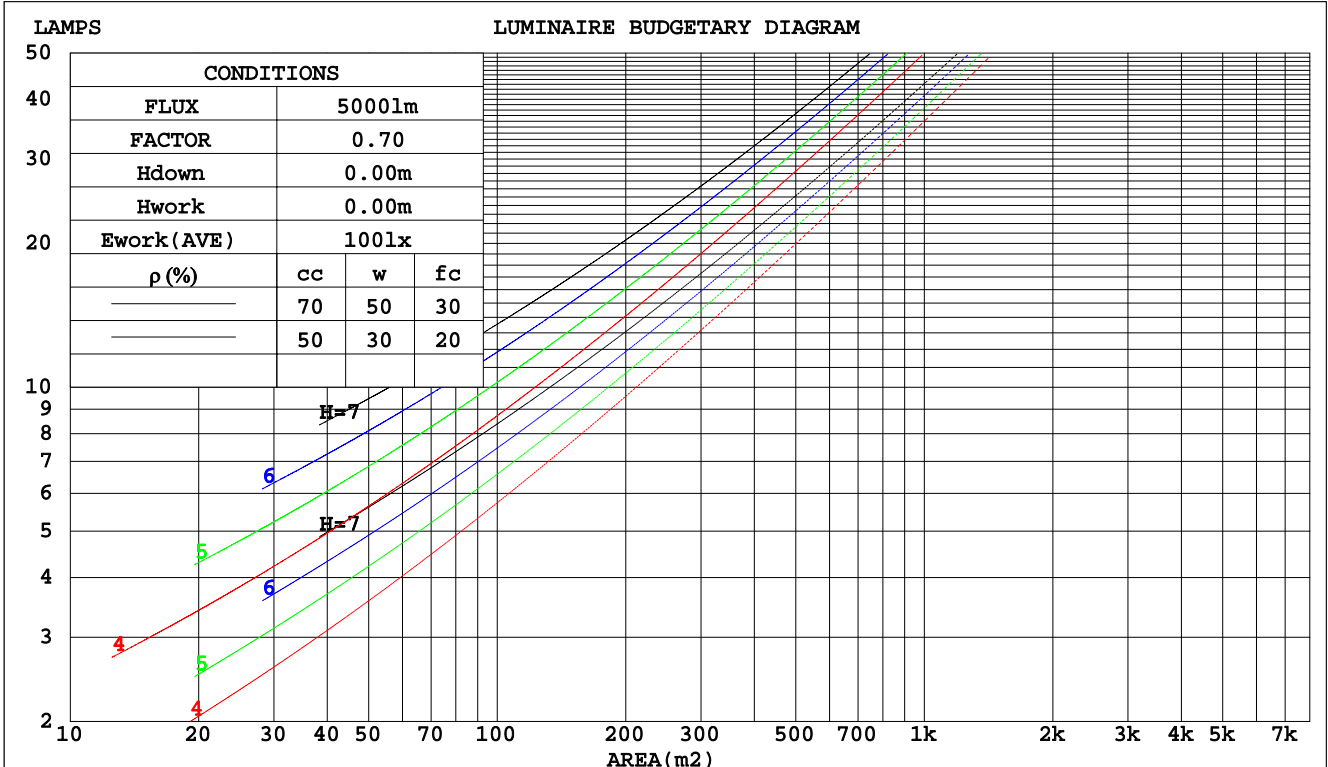
C Range: 0 - 360DEG  
 C Interval: 15.0DEG  
 Test Speed: HIGH  
 Temperature: 25.0DEG  
 Operators: Alan Wang  
 Test Date: 08 May 2023

$\gamma$  Range: 0 - 180DEG  
 $\gamma$  Interval: 1.0DEG  
 Test System: EVERFINE GO-R5000\_V2 SYSTEM V2.00.416  
 Humidity: 42.1%  
 Test Distance: 2.500m [K=1.0390]  
 Remarks:

CU AND LUMINAIRE BUDGETARY ESTIMATE DIAGRAM

Test:U:277.00V I:0.0821A P:19.180W PF:0.8435 Freq:60.00Hz Lamp Flux:1404.86x1 lm		
NAME:	TYPE:LED	WEIGHT:
SPEC.:	DIM.:	SERIAL No.:
MFR.: ASD Lighting corp	SUR.:	Shielding Angle:

pcc	80%			70%			50%			30%			10%			0
	50%	30%	10%	50%	30%	10%	50%	30%	10%	50%	30%	10%	50%	30%	10%	0
pw																
pfc	20%			20%			20%			20%			20%			0
RCR	RCR:Room Cavity Ratio						Coefficients of Utilization(CU)									
0.0	1.08	1.08	1.08	.00	.00	.00	.85	.85	.85	.71	.71	.71	.58	.58	.58	.52
1.0	.86	.80	.75	.79	.74	.69	.66	.62	.58	.54	.51	.48	.43	.41	.38	.33
2.0	.73	.64	.57	.67	.59	.53	.55	.49	.44	.45	.40	.36	.35	.32	.29	.24
3.0	.62	.53	.45	.57	.49	.42	.47	.41	.35	.38	.33	.29	.29	.26	.22	.18
4.0	.54	.44	.37	.50	.41	.34	.41	.34	.29	.33	.28	.23	.25	.21	.18	.14
5.0	.48	.38	.31	.44	.35	.29	.36	.29	.24	.29	.24	.19	.22	.18	.15	.11
6.0	.42	.33	.26	.39	.30	.24	.32	.25	.20	.26	.20	.16	.20	.16	.13	.09
7.0	.38	.29	.23	.35	.27	.21	.29	.22	.17	.23	.18	.14	.18	.14	.11	.08
8.0	.34	.25	.20	.31	.24	.18	.26	.20	.15	.21	.16	.12	.17	.12	.09	.07
9.0	.31	.23	.17	.28	.21	.16	.24	.18	.13	.19	.14	.11	.15	.11	.08	.06
10.0	.28	.20	.15	.26	.19	.14	.22	.16	.12	.18	.13	.10	.14	.10	.07	.05



C Range: 0 - 360DEG  
 C Interval: 15.0DEG  
 Test Speed: HIGH  
 Temperature: 25.0DEG  
 Operators: Alan Wang  
 Test Date: 08 May 2023

γ Range: 0 - 180DEG  
 γ Interval: 1.0DEG  
 Test System: EVERFINE GO-R5000\_V2 SYSTEM V2.00.416  
 Humidity: 42.1%  
 Test Distance: 2.500m [K=1.0390]  
 Remarks:

WEC AND CCEC

Test:U:277.00V I:0.0821A P:19.180W PF:0.8435 Freq:60.00Hz Lamp Flux:1404.86x1 lm		
NAME:	TYPE:LED	WEIGHT:
SPEC.:	DIM.:	SERIAL No.:
MFR.: ASD Lighting corp	SUR.:	Shielding Angle:

ρcc	80%			70%			50%			30%			10%			0
ρw	50%	30%	10%	50%	30%	10%	50%	30%	10%	50%	30%	10%	50%	30%	10%	0
ρfc	20%			20%			20%			20%			20%			0
RCR	RCR:Room Cavity Ratio						Wall Exitance Coefficients(WEC)									
0.0																
1.0	.425	.242	.077	.403	.230	.073	.363	.208	.066	.325	.187	.060	.290	.168	.054	
2.0	.352	.193	.059	.332	.183	.056	.295	.164	.051	.260	.146	.046	.228	.129	.041	
3.0	.305	.163	.049	.287	.154	.046	.253	.137	.042	.221	.121	.037	.192	.106	.033	
4.0	.271	.141	.041	.254	.133	.039	.223	.118	.035	.194	.104	.031	.167	.091	.028	
5.0	.244	.124	.036	.228	.117	.034	.200	.104	.031	.173	.091	.027	.148	.079	.024	
6.0	.222	.111	.032	.207	.105	.030	.181	.093	.027	.156	.081	.024	.133	.070	.021	
7.0	.203	.100	.028	.190	.095	.027	.166	.084	.024	.143	.073	.021	.121	.063	.018	
8.0	.188	.092	.026	.176	.086	.024	.153	.076	.022	.131	.067	.019	.111	.057	.017	
9.0	.174	.084	.024	.163	.079	.022	.142	.070	.020	.122	.061	.017	.103	.052	.015	
10.0	.162	.078	.022	.152	.073	.020	.132	.065	.018	.113	.056	.016	.096	.048	.014	

ρcc	80%			70%			50%			30%			10%			0
ρw	50%	30%	10%	50%	30%	10%	50%	30%	10%	50%	30%	10%	50%	30%	10%	0
ρfc	20%			20%			20%			20%			20%			0
RCR	RCR:Room Cavity Ratio						Ceiling Cavity Exitance Coefficients(CCEC)									
0.0	.555	.555	.555	.475	.475	.475	.324	.324	.324	.186	.186	.186	.060	.060	.060	
1.0	.556	.523	.493	.476	.449	.424	.326	.309	.294	.187	.179	.171	.060	.058	.055	
2.0	.551	.502	.461	.472	.432	.399	.323	.299	.278	.186	.174	.163	.060	.056	.053	
3.0	.544	.487	.442	.466	.420	.383	.320	.292	.269	.185	.170	.158	.059	.055	.052	
4.0	.536	.475	.429	.460	.411	.373	.316	.286	.262	.183	.168	.155	.059	.055	.051	
5.0	.529	.466	.421	.454	.404	.366	.313	.282	.258	.181	.166	.153	.058	.054	.051	
6.0	.521	.459	.414	.448	.398	.361	.309	.278	.255	.179	.164	.152	.058	.054	.050	
7.0	.514	.453	.410	.442	.393	.357	.306	.275	.253	.178	.162	.151	.057	.053	.050	
8.0	.508	.448	.407	.437	.388	.355	.302	.273	.251	.176	.161	.150	.057	.053	.050	
9.0	.502	.443	.404	.432	.385	.352	.299	.270	.250	.174	.160	.149	.056	.052	.049	
10.0	.496	.439	.402	.428	.382	.351	.297	.269	.249	.173	.159	.149	.056	.052	.049	

C Range: 0 - 360DEG  
 C Interval: 15.0DEG  
 Test Speed: HIGH  
 Temperature: 25.0DEG  
 Operators: Alan Wang  
 Test Date: 08 May 2023

γ Range: 0 - 180DEG  
 γ Interval: 1.0DEG  
 Test System: EVERFINE GO-R5000\_V2 SYSTEM V2.00.416  
 Humidity: 42.1%  
 Test Distance: 2.500m [K=1.0390]  
 Remarks:

UGR(Unified Glare Rating) Table

Test:U:277.00V I:0.0821A P:19.180W PF:0.8435 Freq:60.00Hz Lamp Flux:1404.86x1 lm										
NAME:					TYPE:LED			WEIGHT:		
SPEC.:					DIM.:			SERIAL No.:		
MFR.: ASD Lighting corp					SUR.:			Shielding Angle:		
ceiling/cavity	0.7	0.7	0.5	0.5	0.3	0.7	0.7	0.5	0.5	0.3
walls	0.5	0.3	0.5	0.3	0.3	0.5	0.3	0.5	0.3	0.3
working plane	0.2	0.2	0.2	0.2	0.2	0.2	0.2	0.2	0.2	0.2
Room dimensions	Viewed crosswise					Viewed endwise				
x = 2H y = 2H	12.0	13.1	12.9	14.0	15.1	14.7	15.9	15.6	16.7	17.9
3H	15.0	16.0	15.9	16.9	18.1	19.2	20.3	20.1	21.2	22.3
4H	16.6	17.6	17.5	18.5	19.7	21.7	22.7	22.6	23.6	24.8
6H	18.3	19.2	19.2	20.1	21.3	24.3	25.2	25.2	26.1	27.3
8H	19.1	20.0	20.0	20.9	22.1	25.6	26.4	26.5	27.4	28.6
12H	20.0	20.8	20.9	21.8	23.0	27.0	27.8	27.9	28.8	30.0
4H 2H	13.8	14.7	14.6	15.6	16.8	15.5	16.5	16.4	17.4	18.6
3H	16.8	17.7	17.7	18.6	19.8	20.1	21.0	21.1	21.9	23.1
4H	18.5	19.3	19.4	20.2	21.5	22.8	23.6	23.7	24.5	25.8
6H	20.2	20.9	21.2	21.9	23.1	25.5	26.2	26.5	27.2	28.5
8H	21.1	21.7	22.0	22.7	24.0	26.9	27.6	27.9	28.6	29.8
12H	22.0	22.6	22.9	23.6	24.9	28.5	29.1	29.4	30.0	31.3
8H 4H	20.1	20.7	21.0	21.7	23.0	23.2	23.9	24.2	24.8	26.1
6H	22.0	22.5	23.0	23.5	24.8	26.2	26.8	27.2	27.8	29.1
8H	23.0	23.5	23.9	24.5	25.8	27.8	28.3	28.8	29.3	30.7
12H	24.0	24.4	25.0	25.4	26.8	29.6	30.1	30.6	31.1	32.4
12H 4H	20.7	21.3	21.6	22.2	23.5	23.2	23.8	24.2	24.8	26.1
6H	22.7	23.2	23.7	24.2	25.5	26.3	26.8	27.3	27.9	29.2
8H	23.8	24.3	24.8	25.3	26.6	28.1	28.5	29.1	29.5	30.9
Variations with the observer position at spacings:										
S = 1.0H	+ 0.1 / - 0.1					+ 0.1 / - 0.1				
1.5H	+ 0.2 / - 0.2					+ 0.2 / - 0.3				
2.0H	+ 0.3 / - 0.4					+ 0.3 / - 0.4				

CIE Pub.117, 1405 lm Total Lamp Luminous Flux Corrected (8log(F/F0) = 1.2)  
 Area: 0.06825 m2

C Range: 0 - 360DEG  
 C Interval: 15.0DEG  
 Test Speed: HIGH  
 Temperature: 25.0DEG  
 Operators: Alan Wang  
 Test Date: 08 May 2023

γ Range: 0 - 180DEG  
 γ Interval: 1.0DEG  
 Test System: EVERFINE GO-R5000\_V2 SYSTEM V2.00.416  
 Humidity: 42.1%  
 Test Distance: 2.500m [K=1.0390]  
 Remarks:

## UTILIZATION FACTORS TABLE

Test:U:277.00V I:0.0821A P:19.180W PF:0.8435 Freq:60.00Hz Lamp Flux:1404.86x1 lm		
NAME:	TYPE:LED	WEIGHT:
SPEC.:	DIM.:	SERIAL No.:
MFR.: ASD Lighting corp	SUR.:	Shielding Angle:

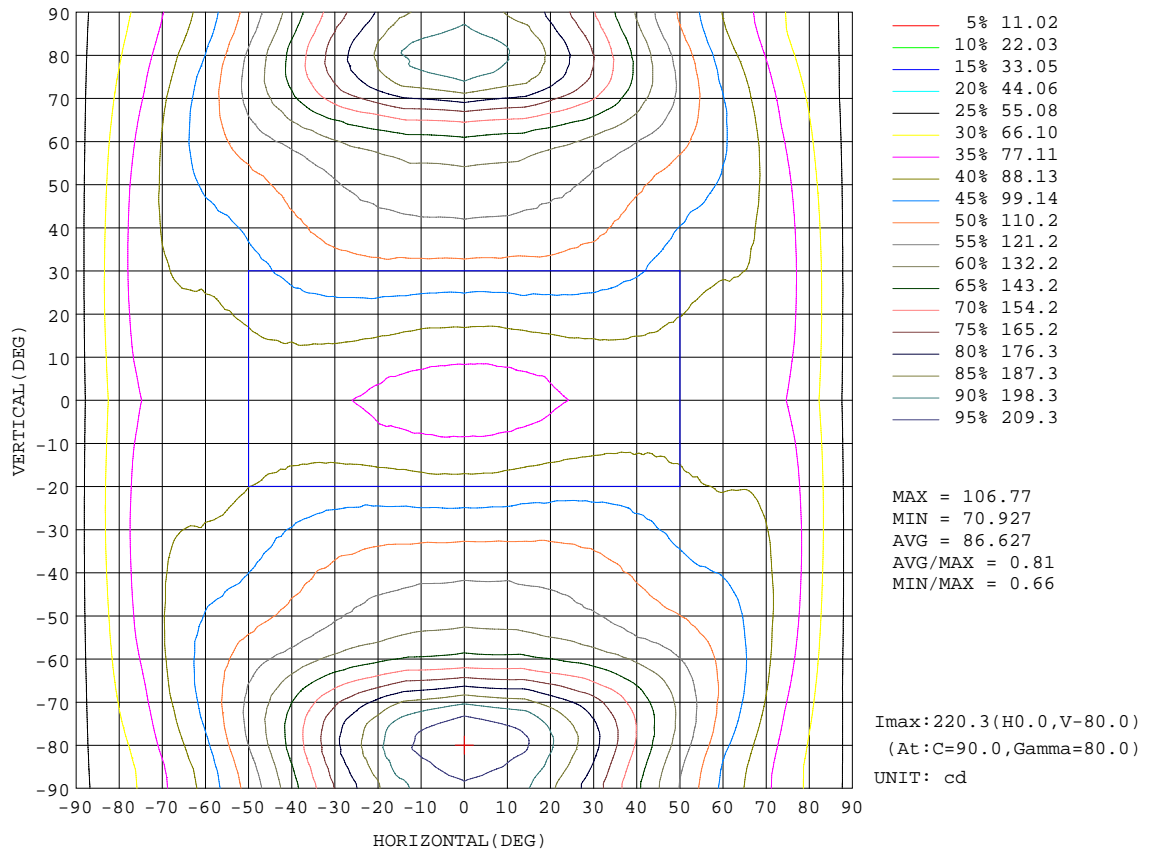
REFLECTANCE										
Ceiling	0.8	0.8	0.8	0.7	0.7	0.7	0.5	0.5	0.5	0
Walls	0.7	0.5	0.3	0.7	0.5	0.3	0.7	0.5	0.3	0
Working plane	0.2	0.2	0.2	0.2	0.2	0.2	0.2	0.2	0.2	0
ROOM INDEX	UTILIZATION FACTORS(PERCENT) $k(RI) \times RCR = 5$									
k = 0.60	36	23	16	34	22	15	31	20	14	7
0.80	44	30	22	42	29	21	37	26	19	10
1.00	51	37	28	48	35	26	42	33	24	12
1.25	58	44	34	54	41	32	47	36	29	15
1.50	63	49	39	59	46	37	51	40	33	18
2.00	71	58	48	66	54	45	56	47	40	22
2.50	76	64	54	71	60	51	60	51	45	25
3.00	80	69	60	74	64	56	63	55	49	27
4.00	86	76	68	79	70	63	67	60	55	31
5.00	89	81	73	82	75	68	70	64	59	34
ROOM INDEX	UF(total)									Direct
According to DIN EN 13032-2 2004			Suspended				SHRNOM = 1.25			

C Range: 0 - 360DEG  
 C Interval: 15.0DEG  
 Test Speed: HIGH  
 Temperature: 25.0DEG  
 Operators: Alan Wang  
 Test Date: 08 May 2023

$\gamma$  Range: 0 - 180DEG  
 $\gamma$  Interval: 1.0DEG  
 Test System: EVERFINE GO-R5000\_V2 SYSTEM V2.00.416  
 Humidity: 42.1%  
 Test Distance: 2.500m [K=1.0390]  
 Remarks:

ISOCANDELA DIAGRAM

Test:U:277.00V I:0.0821A P:19.180W PF:0.8435 Freq:60.00Hz Lamp Flux:1404.86x1 lm		
NAME:	TYPE:LED	WEIGHT:
SPEC.:	DIM.:	SERIAL No.:
MFR.: ASD Lighting corp	SUR.:	Shielding Angle:



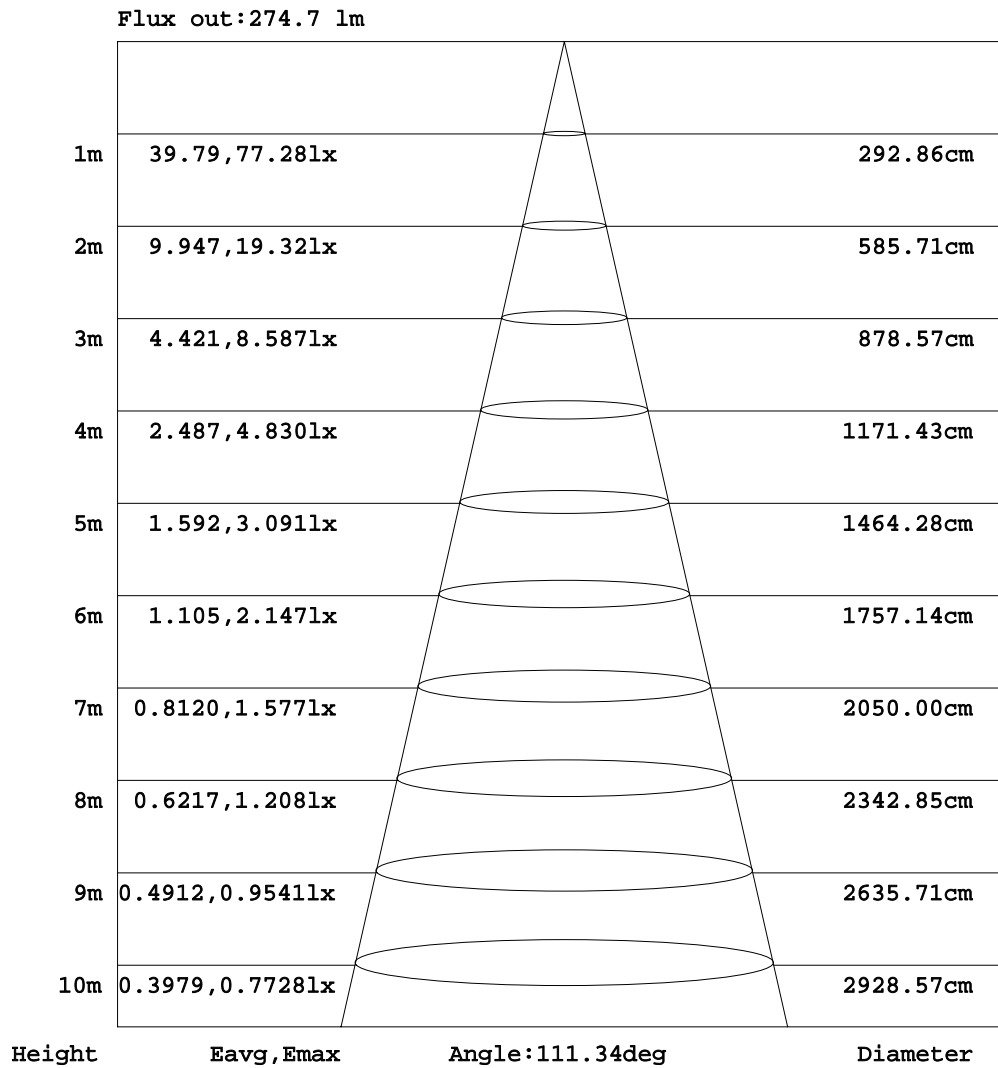
C Range: 0 - 360DEG  
 C Interval: 15.0DEG  
 Test Speed: HIGH  
 Temperature: 25.0DEG  
 Operators: Alan Wang  
 Test Date: 08 May 2023

γ Range: 0 - 180DEG  
 γ Interval: 1.0DEG  
 Test System: EVERFINE GO-R5000\_V2 SYSTEM V2.00.416  
 Humidity: 42.1%  
 Test Distance: 2.500m [K=1.0390]  
 Remarks:



AAI Figure

Test:U:277.00V I:0.0821A P:19.180W PF:0.8435 Freq:60.00Hz Lamp Flux:1404.86x1 lm		
NAME:	TYPE:LED	WEIGHT:
SPEC.:	DIM.:	SERIAL No.:
MFR.: ASD Lighting corp	SUR.:	Shielding Angle:



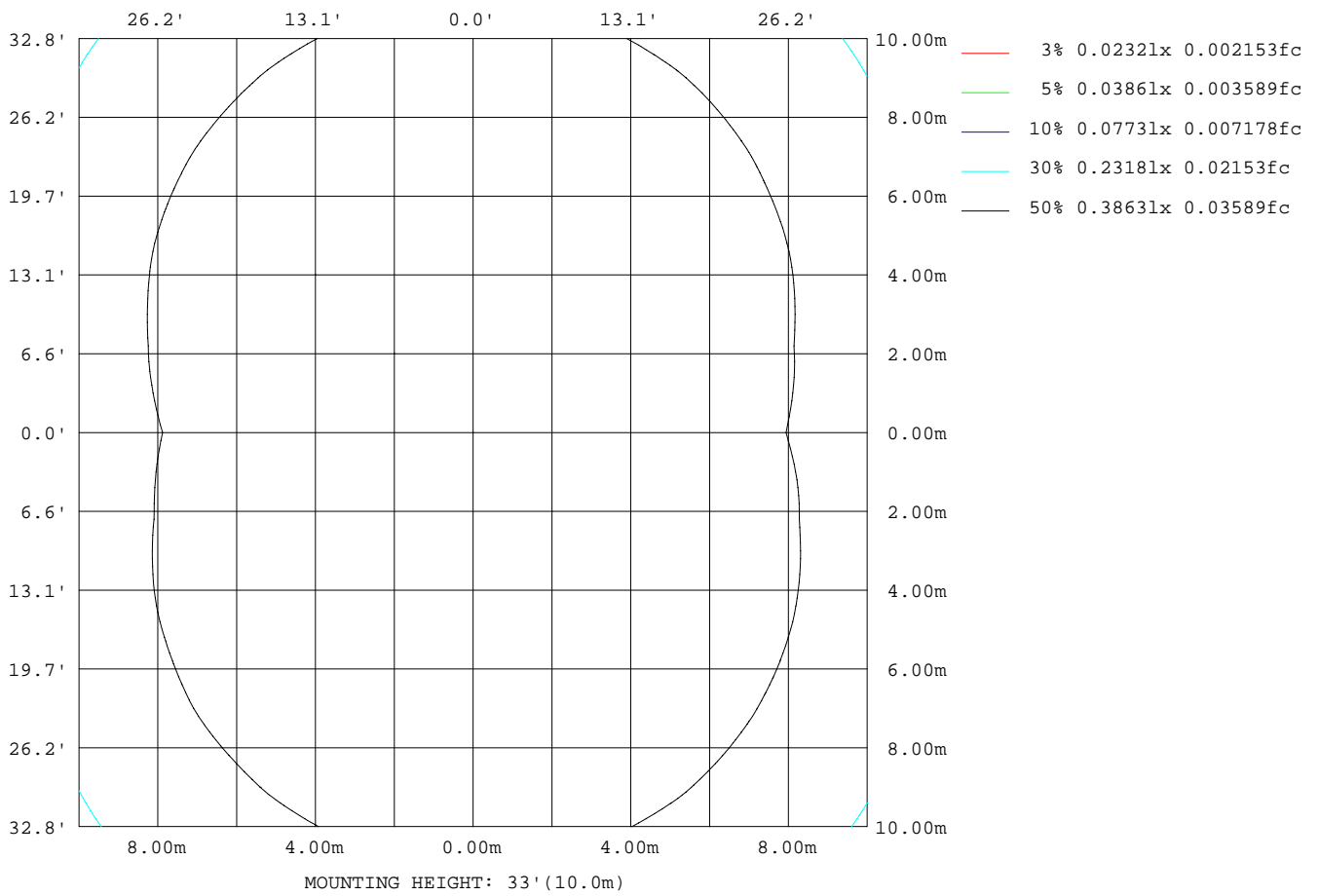
Note:The Curves indicate the illuminated area and the average illumination when the luminaire is at different distance.

C Range: 0 - 360DEG  
 C Interval: 15.0DEG  
 Test Speed: HIGH  
 Temperature: 25.0DEG  
 Operators: Alan Wang  
 Test Date: 08 May 2023

γ Range: 0 - 180DEG  
 γ Interval: 1.0DEG  
 Test System: EVERFINE GO-R5000\_V2 SYSTEM V2.00.416  
 Humidity: 42.1%  
 Test Distance: 2.500m [K=1.0390]  
 Remarks:

ISOLUX DIAGRAM

Test:U:277.00V I:0.0821A P:19.180W PF:0.8435 Freq:60.00Hz Lamp Flux:1404.86x1 lm		
NAME:	TYPE:LED	WEIGHT:
SPEC.:	DIM.:	SERIAL No.:
MFR.: ASD Lighting corp	SUR.:	Shielding Angle:



C Range: 0 - 360DEG  
 C Interval: 15.0DEG  
 Test Speed: HIGH  
 Temperature: 25.0DEG  
 Operators: Alan Wang  
 Test Date: 08 May 2023

$\gamma$  Range: 0 - 180DEG  
 $\gamma$  Interval: 1.0DEG  
 Test System: EVERFINE GO-R5000\_V2 SYSTEM V2.00.416  
 Humidity: 42.1%  
 Test Distance: 2.500m [K=1.0390]  
 Remarks:

## LED Avg.L Report

Test:U:277.00V I:0.0821A P:19.180W PF:0.8435 Freq:60.00Hz Lamp Flux:1404.86x1 lm		
NAME:	TYPE:LED	WEIGHT:
SPEC.:	DIM.:	SERIAL No.:
MFR.: ASD Lighting corp	SUR.:	Shielding Angle:

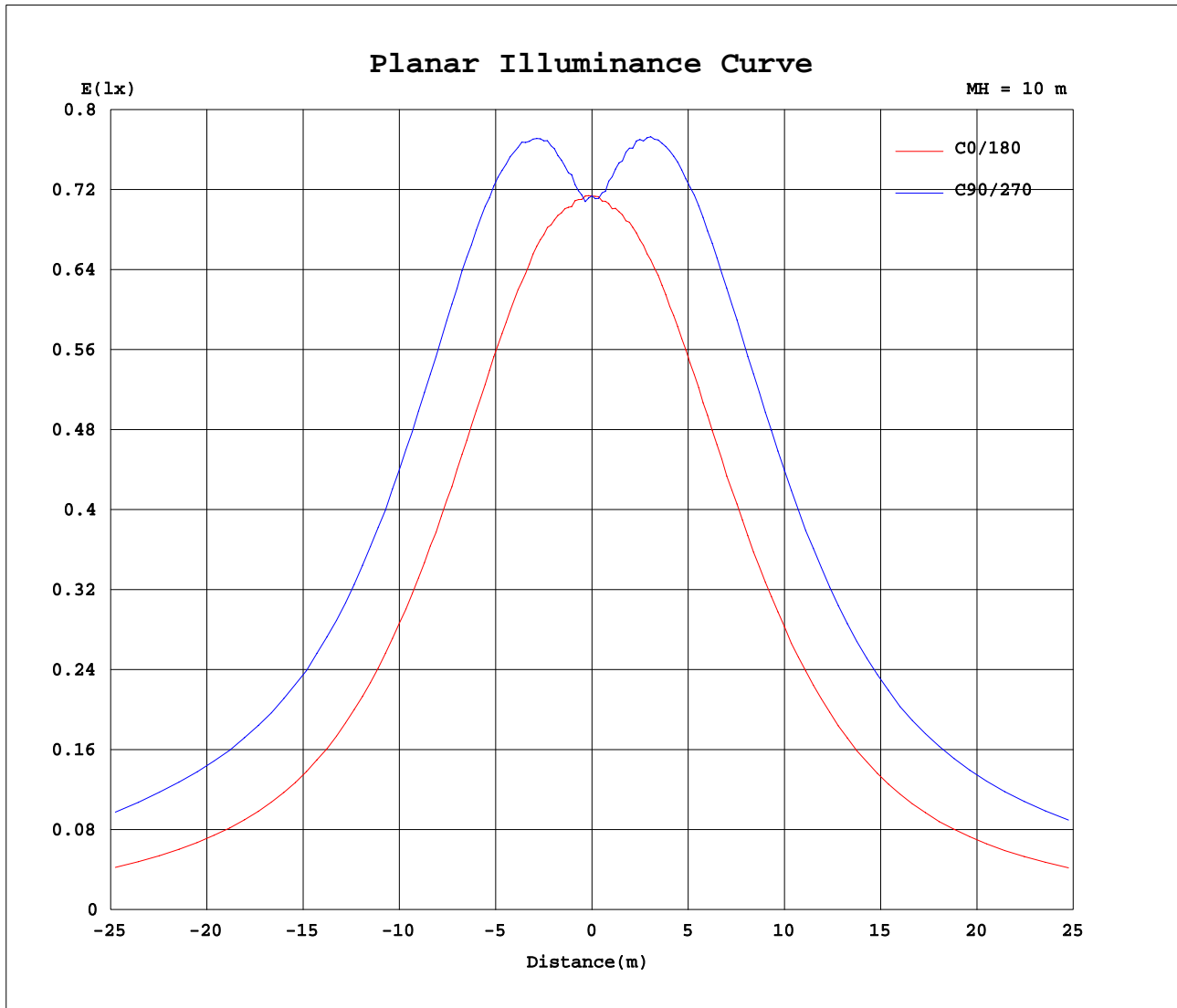
AvgL	cd/m2
L_0~180(65)av	2744
L_0~180(75)av	4349
L_0~180(85)av	10209
L_90~270(65)av	5639
L_90~270(75)av	11741
L_90~270(85)av	34983
L_45(65)av	4166
L_45(75)av	7677
L_45(85)av	22150

Standard: GB/T 29293-2012

C Range: 0 - 360DEG  
C Interval: 15.0DEG  
Test Speed: HIGH  
Temperature: 25.0DEG  
Operators: Alan Wang  
Test Date: 08 May 2023

$\gamma$  Range: 0 - 180DEG  
 $\gamma$  Interval: 1.0DEG  
Test System: EVERFINE GO-R5000\_V2 SYSTEM V2.00.416  
Humidity: 42.1%  
Test Distance: 2.500m [K=1.0390]  
Remarks:

Planar Illuminance Curve



C Range: 0 - 360DEG  
 C Interval: 15.0DEG  
 Test Speed: HIGH  
 Temperature: 25.0DEG  
 Operators: Alan Wang  
 Test Date: 08 May 2023

$\gamma$  Range: 0 - 180DEG  
 $\gamma$  Interval: 1.0DEG  
 Test System: EVERFINE GO-R5000\_V2 SYSTEM V2.00.416  
 Humidity: 42.1%  
 Test Distance: 2.500m [K=1.0390]  
 Remarks:

LUMINOUS DISTRIBUTION INTENSITY DATA

Test:U:277.00V I:0.0821A P:19.180W PF:0.8435 Freq:60.00Hz Lamp Flux:1404.86x1 lm		
NAME:	TYPE:LED	WEIGHT:
SPEC.:	DIM.:	SERIAL No.:
MFR.: ASD Lighting corp	SUR.:	Shielding Angle:

Table--1

UNIT: cd

C(DEG) γ (DEG)	0	15	30	45	60	75	90	105	120	135	150	165	180	195	210	225	240	255	270
0	71.4	71.5	71.2	71.1	71.1	71.3	71.4	71.3	71.4	71.3	71.4	71.0	71.4	71.5	71.2	71.1	71.1	71.3	71.4
5	71.7	71.5	71.7	72.1	72.9	73.4	73.3	73.3	72.7	72.2	71.7	71.3	71.4	71.6	71.7	72.5	72.9	73.5	73.7
10	72.7	72.7	74.3	76.1	77.7	78.8	78.9	78.4	77.3	75.9	74.1	72.2	72.1	72.8	74.2	76.5	77.8	79.1	79.3
15	74.4	75.1	78.4	81.3	83.2	84.7	85.5	84.5	82.9	80.7	77.8	74.3	73.7	75.2	78.2	81.0	83.2	85.0	85.3
20	75.7	78.0	82.5	87.0	89.8	91.5	92.5	90.9	89.4	86.0	81.7	76.9	75.3	78.0	82.6	86.6	89.7	91.7	92.4
25	77.4	80.9	86.9	92.3	96.2	98.5	99.3	98.2	95.2	91.2	85.6	79.7	76.7	80.9	86.8	92.0	96.1	98.3	99.4
30	78.8	83.7	91.1	97.3	103	105	107	105	102	96.4	89.5	82.0	78.1	83.1	90.9	97.1	103	105	107
35	80.1	86.3	94.9	103	109	112	113	112	107	101	92.9	84.1	78.9	85.6	94.5	102	109	112	113
40	80.9	88.3	98.1	107	114	118	119	117	113	106	96.3	85.8	79.6	87.8	97.6	107	114	117	119
45	81.0	89.4	101	111	119	123	124	122	118	109	98.1	86.9	80.0	88.5	99.8	110	118	123	124
50	80.3	89.5	102	113	122	127	130	127	121	111	99.4	86.8	79.4	89.1	101	113	121	127	129
55	79.4	89.5	103	115	127	133	136	132	125	113	99.9	86.8	78.3	88.9	102	114	125	131	133
60	78.7	90.2	104	118	133	144	147	142	131	115	101	86.4	77.6	88.7	102	115	129	138	141
65	80.0	91.9	107	124	146	162	169	161	142	120	103	87.8	78.3	89.9	103	119	138	152	156
70	80.1	93.3	110	134	163	188	196	185	158	128	106	89.7	79.2	91.3	106	126	152	173	181
75	76.7	91.5	113	142	177	205	214	202	171	136	108	88.6	76.9	90.1	108	135	166	192	200
80	70.3	86.7	110	143	181	210	220	207	175	136	105	83.1	70.5	85.4	107	137	172	198	206
85	60.4	77.5	103	137	176	206	215	202	171	131	97.6	74.5	61.1	77.1	99.9	132	168	193	201
90	52.2	70.5	96.5	133	171	198	208	197	166	126	91.4	67.0	51.8	68.6	92.7	125	160	186	194
95	57.8	74.9	101	137	176	206	216	204	171	130	95.0	70.7	56.6	72.7	96.6	129	167	193	203
100	62.3	76.5	101	136	176	208	219	206	173	131	96.3	73.0	61.8	75.2	98.0	131	169	197	206
105	63.3	73.5	96.0	129	168	199	210	196	164	125	93.2	71.5	64.0	73.4	94.4	125	161	189	198
110	63.6	69.7	90.3	118	151	177	188	176	149	115	88.5	68.5	64.1	69.9	89.4	116	147	170	178
115	67.2	70.0	87.5	110	133	153	161	152	132	108	86.3	68.8	67.5	68.9	86.4	108	130	148	154
120	72.0	74.3	86.1	104	122	136	142	135	121	103	84.8	72.6	71.7	73.1	85.3	103	120	133	137
125	75.8	78.4	84.8	99.8	114	126	130	125	114	99.3	83.5	76.1	75.9	76.7	83.8	99.1	113	123	127
130	78.7	80.9	83.5	96.3	109	119	122	118	108	96.3	82.7	78.5	79.0	79.4	82.1	95.2	107	116	119
135	80.3	82.1	85.7	92.1	103	111	115	111	103	91.7	84.4	80.2	80.4	81.2	83.1	90.5	101	109	112
140	80.9	82.3	86.1	88.3	97.6	104	107	104	96.9	88.2	83.4	80.4	81.4	81.5	83.7	86.2	95.3	101	104
145	80.1	81.4	83.8	89.5	92.3	96.4	98.9	96.4	91.7	87.9	82.9	79.5	81.1	81.4	81.3	85.7	89.0	93.4	95.5
150	79.6	80.6	83.2	87.9	91.2	92.1	92.5	92.1	90.8	86.3	81.0	77.5	80.0	79.9	81.1	84.8	87.1	88.4	88.7
155	79.4	79.5	81.8	85.2	88.2	90.0	90.6	90.0	87.2	83.6	79.6	75.4	79.7	79.4	79.2	82.2	84.7	86.1	87.1
160	78.6	77.5	80.4	82.3	84.4	85.7	86.0	85.4	81.4	81.1	77.4	74.7	78.8	78.4	76.7	78.5	81.2	82.4	82.7
165	76.5	76.3	77.4	80.1	81.0	81.7	82.0	81.0	80.2	78.4	74.2	75.2	77.2	77.0	75.6	75.0	76.5	78.9	79.7
170	65.2	67.8	68.3	72.8	77.1	77.3	76.3	77.3	76.0	70.2	62.6	66.3	66.0	66.3	68.0	66.6	71.4	76.0	76.4
175	47.1	47.5	49.0	59.6	61.0	59.8	56.2	55.2	54.7	50.3	47.8	47.1	46.5	46.8	45.8	46.2	48.9	51.7	52.9
180	38.1	37.6	35.4	31.3	17.5	5.66	0.00	10.2	19.8	30.1	38.5	39.2	39.1	39.0	37.1	33.1	30.1	24.4	12.4

C Range: 0 - 360DEG  
 C Interval: 15.0DEG  
 Test Speed: HIGH  
 Temperature: 25.0DEG  
 Operators: Alan Wang  
 Test Date: 08 May 2023

γ Range: 0 - 180DEG  
 γ Interval: 1.0DEG  
 Test System: EVERFINE GO-R5000\_V2 SYSTEM V2.00.416  
 Humidity: 42.1%  
 Test Distance: 2.500m [K=1.0390]  
 Remarks:

LUMINOUS DISTRIBUTION INTENSITY DATA

Test:U:277.00V I:0.0821A P:19.180W PF:0.8435 Freq:60.00Hz Lamp Flux:1404.86x1 lm		
NAME:	TYPE:LED	WEIGHT:
SPEC.:	DIM.:	SERIAL No.:
MFR.: ASD Lighting corp	SUR.:	Shielding Angle:

Table--2

UNIT: cd

C( DEG) γ (DEG)	285	300	315	330	345														
0	71.3	71.4	71.3	71.4	71.0														
5	73.2	72.7	72.4	71.4	71.6														
10	78.5	77.4	76.0	74.1	72.7														
15	84.8	83.0	81.0	77.9	75.0														
20	91.3	89.4	86.2	82.0	77.4														
25	97.8	95.8	91.3	86.0	80.1														
30	105	102	96.8	90.0	82.1														
35	111	108	102	93.5	84.6														
40	117	113	106	96.1	86.5														
45	122	117	109	98.1	87.2														
50	127	120	111	99.9	87.5														
55	131	123	112	100	87.5														
60	137	127	114	100	87.2														
65	151	135	117	102	88.7														
70	172	149	124	104	89.2														
75	189	162	130	105	87.1														
80	195	166	131	102	81.7														
85	190	162	126	94.6	72.8														
90	183	155	119	87.5	65.3														
95	191	162	124	91.6	69.6														
100	193	162	124	92.3	71.4														
105	185	154	117	89.0	68.7														
110	166	140	109	84.2	65.4														
115	144	125	103	82.2	67.1														
120	130	116	98.7	81.4	71.9														
125	122	110	95.7	80.2	75.7														
130	115	105	92.4	79.6	78.5														
135	108	99.5	87.8	81.6	80.0														
140	100	93.9	84.6	82.0	80.8														
145	92.9	88.3	85.4	81.4	80.4														
150	88.1	87.2	84.7	81.4	80.0														
155	86.9	85.5	83.8	80.9	79.2														
160	84.2	83.4	82.1	79.4	76.7														
165	78.8	80.6	78.7	76.9	74.3														
170	76.1	73.9	74.1	68.9	67.2														
175	54.0	56.9	57.5	53.4	45.3														
180	0.55	12.9	27.3	32.3	35.0														

C Range: 0 - 360DEG  
 C Interval: 15.0DEG  
 Test Speed: HIGH  
 Temperature: 25.0DEG  
 Operators: Alan Wang  
 Test Date: 08 May 2023

γ Range: 0 - 180DEG  
 γ Interval: 1.0DEG  
 Test System: EVERFINE GO-R5000\_V2 SYSTEM V2.00.416  
 Humidity: 42.1%  
 Test Distance: 2.500m [K=1.0390]  
 Remarks: