



# LED FABRIC DRUM FLUSHMOUNT

► **DESIGN & OPTIONS** - LED FABRIC DRUM FLUSHMOUNT has a modern, cozy design allowing you to have a stylish look with efficient lighting. It features smooth dimming capabilities ranging from 100% to 10% with modern LED dimmers, and a 120° beam angle that grants you smooth and even lighting. This fixture includes a color adjustable option, you can choose either 3,000K, 4,000K or 5,000K with a simple switch. Comes in two different shade colorations: NATURAL and WHITE with a BRONZE or BRUSHED NICKEL finish.

► **INSTALLATION** - Installation is quick and easy: just attach the crossbar to the outlet box with screws, connect the wires, and fasten the fixture to the crossbar. Screws, wire nuts and all installation accessories are provided. Refer to install instructions for detailed steps.

► **APPLICATION** - This LED FABRIC DRUM FLUSHMOUNT creates bright, yet smooth illumination in your family room, bedroom, hallways, corridors, or any other common areas in your living space. This fixture is Damp location rated. It can also be used as an additional light to an existing ceiling light.

► **ENERGY SAVINGS & EFFICIENCY** - Replacing an incandescent fixture with our LED FABRIC DRUM FLUSHMOUNT can save you 8 times as much on your current energy costs. With a lifespan of 50,000 hours, these fixtures are made to last decades with normal operation! This fixture will save you a significant amount of money in its lifetime.

► **CERTIFICATION & WARRANTY** - Buy with confidence: ASD provides a 5-year warranty along with ETL and ENERGY STAR certifications to guarantee top quality products and safety!

Top US certifications allow participation in rebates; please check the rebate programs available in your state.

Catalog number	
Notes	
Type	



Fabric:	White	Natural	White	Natural
Finish:	Nickel	Nickel	Bronze	Bronze

## PRODUCT LEGEND:

Family	Size	Dimmable	Watts	CCT	Fabric	Finish
ASD-LFMFD	XX	X	XX	XX	XX	XX
LED Fabric Drum Flushmount	15 = 15 inch	D = Dimmable	23 = 23 W	CC = 3,000/4,000/5,000 K	WH = White NA = Natural	NK = Brushed Nickel BZ = Oil Rubbed Bronze

## LED FABRIC DRUM FLUSHMOUNT:

Model	Watts	Dimming	CCT	Lumens	Dimensions (LxWxH)	Fabric	Finish
ASD-LFMFD-15D23CC-WH/NK	23 W	TRIAC	3,000/4,000/5,000 K	1,400 lm	15" x 15" x 5"	White	Brushed Nickel
ASD-LFMFD-15D23CC-NA/NK	23 W	TRIAC	3,000/4,000/5,000 K	1,400 lm	15" x 15" x 5"	Natural	Brushed Nickel
ASD-LFMFD-15D23CC-WH/BZ	23 W	TRIAC	3,000/4,000/5,000 K	1,400 lm	15" x 15" x 5"	White	Oil Rubbed Bronze
ASD-LFMFD-15D23CC-NA/BZ	23 W	TRIAC	3,000/4,000/5,000 K	1,400 lm	15" x 15" x 5"	Natural	Oil Rubbed Bronze

## PRODUCT SPECIFICATIONS:

Construction & Materials			Electrical System			
Diffuser	White Acrylic		Input Voltage	120 V		
Housing	Steel		Max input current	0.4 A		
Fabric Color	White, Natural		Inrush current (Action time)	0.2 A (0.5 S)		
Finish Color	Brushed Nickel, Oil Rubbed Bronze		AC input range	min 108 V    max 132 V		
Weight	2.9 lb (1.3 kg)		Off State Power	0 W		
Environmental System			Power Consumption	23 W		
Work Environment	Suitable for Damp Locations		Power Factor	0.9		
Operating Temperature	-4°F to 113°F / -20°C to 45°C		LED driver class	DOB		
L70 life	> 50,000 hrs		Forward voltage	33 V		
Optical System			Dimming range			
Luminous Flux	1,400 lm		10-100%			
Color Temperature	3,000/4,000/5,000 K		Dimming compatible controls			
CRI	> 80		Brand	Lutron		
Regular and Voluntary Certifications			Models	DVCL-153P	CTCL-153P	6672
5-year limited warranty	cETLus certified 4001256	Energy Star		TGCL-153P	PD-6WCL	6674

For most up-to-date spec sheets please refer to [asd-lighting.com](http://asd-lighting.com)

ASD LIGHTING CORP

E-mail: [orders@asd-lighting.com](mailto:orders@asd-lighting.com) | Web site: [www.asd-lighting.com](http://www.asd-lighting.com)

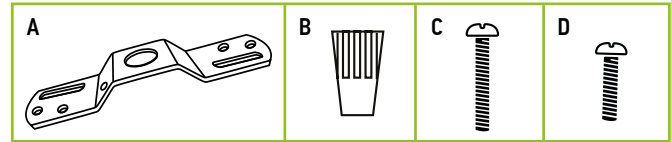




# LED FABRIC DRUM FLUSHMOUNT

## PACKAGE CONTENTS:

Description	Q-ty
LED Fabric Drum Flushmount	1
Crossbar (A)	1
Wire nuts (B)	3
1 1/4inch Screws (C)	2
3/4 inch Screws (D)	2
Box	1
Cut Sheet	2



## INSTALLATION GUIDE

### IMPORTANT SAFETY INFORMATION:

Please read all the instructions below before installation.

- ▶ Make sure that the supply voltage corresponds to the rated product voltage.
- ▶ The product must be installed by a qualified electrician in accordance with the National Electrical Code and corresponding local codes.
- ▶ If the product is damaged, do not use it.

### ⚠ WARNING

**RISK OF PERSONAL INJURY – READ and follow all WARNINGS and installation instructions.**

Keep or give to the owner for future reference.

**Risk of cuts:** Wear gloves to prevent cuts or abrasions when removing from carton, handling, installing, and maintaining this product.

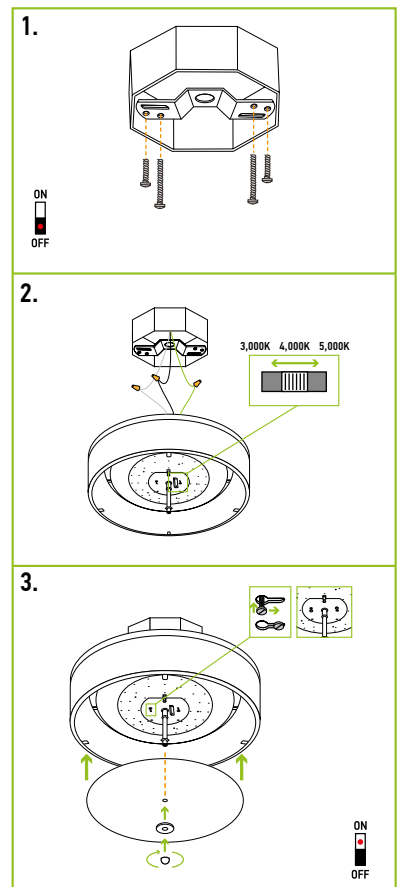
**Risk of electric shock:** This product must be installed in accordance with the applicable installation code by a person familiar with the construction and operation of the product and the hazards involved.

**Risk of Fire:** Minimum 194°F supply conductors. Consult a qualified electrician to ensure correct branch circuit conductor.

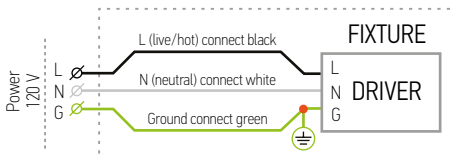
ASD® assumes no responsibility for claims arising out of improper or careless Installation or handling of this product.

### INSTALLATION STEPS:

1. Attach the crossbar to the outlet box using the smaller screws. Beside smaller screws, attach the longer screws with cap pointed down.
2. Make wire connections: Black supply wire to Black fixture wire, White supply wire to White fixture wire, supply Ground wire to fixture Ground wire. Secure the connection with wire nuts. Choose needed CCT by adjusting the switch position.
3. Place the fixture pan over the outlet box and feed longer screws through keyhole slots. Rotate the fixture pan clockwise until screws lock into the narrow end of the keyhole slots. Tighten the screws firmly. Place the lens and secure it with decorative washer and decorative cap.



### ELECTRICAL SCHEMATIC DIAGRAM:



## ORDERING INFORMATION

Model	Fabric	Finish	UPC	Pcs. per Carton	Carton Size	Carton Weight	GTIN-14
ASD-LFMFD-15D23CC-WH/NK	White	Brushed Nickel	810050730723	4	17.7" x 17.7" x 24"	22.9 lb	10810050730720
ASD-LFMFD-15D23CC-NA/NK	Natural	Brushed Nickel	810050730730	4	17.7" x 17.7" x 24"	22.9 lb	10810050730737
ASD-LFMFD-15D23CC-WH/BZ	White	Oil Rubbed Bronze	810050732321	4	17.7" x 17.7" x 24"	22.9 lb	10810050732328
ASD-LFMFD-15D23CC-NA/BZ	Natural	Oil Rubbed Bronze	810050732345	4	17.7" x 17.7" x 24"	22.9 lb	10810050732342

For most up-to-date spec sheets please refer to [asd-lighting.com](http://asd-lighting.com)

ASD LIGHTING CORP

E-mail: [orders@asd-lighting.com](mailto:orders@asd-lighting.com) | Web site: [www.asd-lighting.com](http://www.asd-lighting.com)

