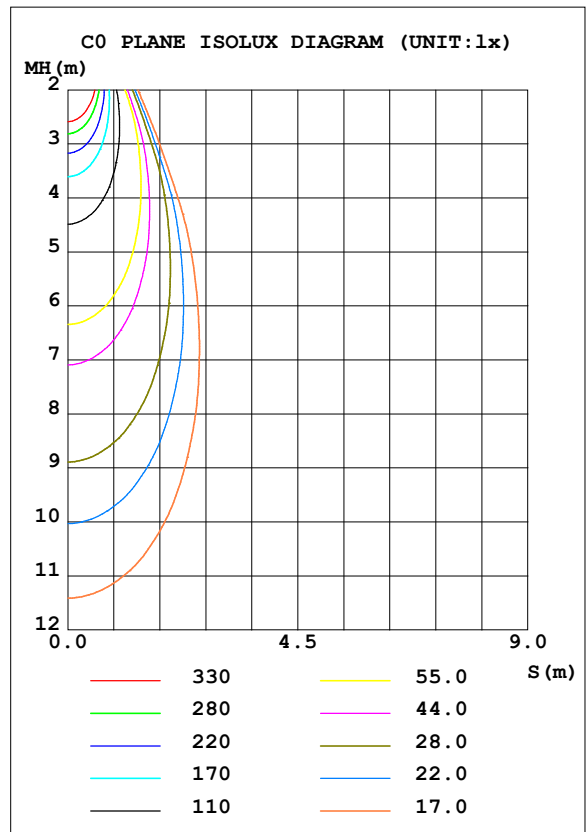
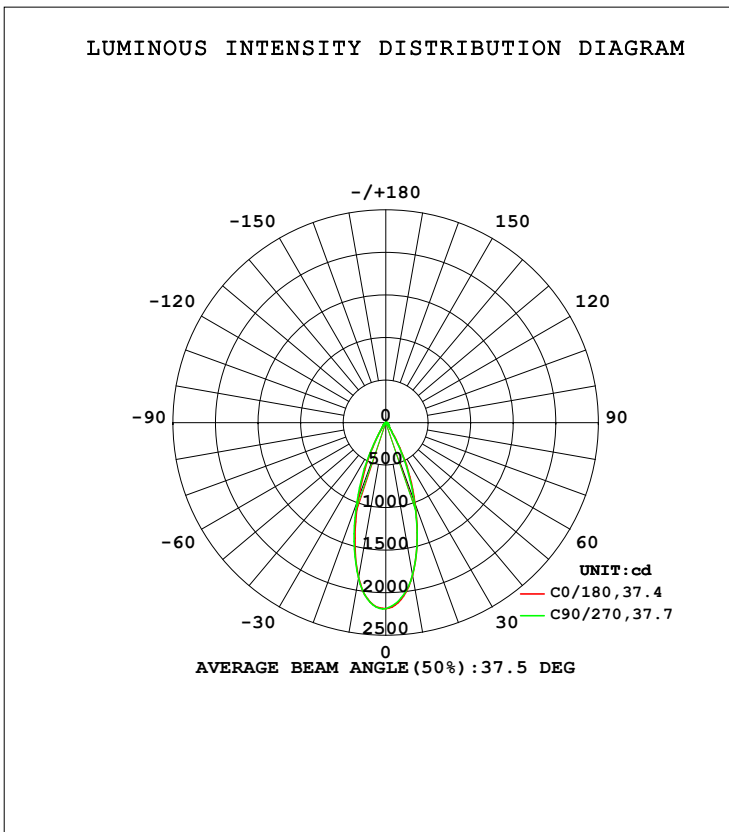


**LUMINAIRE PHOTOMETRIC TEST REPORT**

Test:U:119.96V I:0.1094A P:12.935W PF:0.9478 Freq:59.98Hz Lamp Flux:1011.88x1 lm		
NAME: ASD-CD-CR-2D15AC-CH/BK	TYPE:	WEIGHT:
SPEC.:4000K 90	DIM.:	SERIAL No.:
MFR.: ASD Lighting Corp	SUR.:	Shielding Angle:

DATA OF LAMP		PHOTOMETRIC DATA Eff: 78.23 lm/W			
MODEL		I <sub>max</sub> (cd)	2190	S/MH (C0/180)	0.60
NOMINAL POWER (W)	15	LOR (%)	100.0	S/MH (C90/270)	0.62
RATED VOLTAGE (V)	120	TOTAL FLUX (lm)	1011.9	<input type="checkbox"/> UP, DN (C0-180)	0.0, 50.1
NOMINAL FLUX (lm)	1011.88	CIE CLASS	DIRECT	<input type="checkbox"/> UP, DN (C180-360)	0.0, 49.9
LAMPS INSIDE	1	<input type="checkbox"/> up (%)	0.0	CIBSE SHR NOM	0.50
TEST VOLTAGE (V)	120	<input type="checkbox"/> down (%)	100.0	CIBSE SHR MAX	0.65



C Range: 0 - 360DEG  
 C Interval: 22.5DEG  
 Test Speed: HIGH  
 Temperature: 25.3DEG  
 Operators:  
 Test Date: 2021-10-20

Range: 0 - 90DEG  
 Interval: 1.0DEG  
 Test System: EVERFINE GO-SPEX500\_V1 SYSTEM V2.00.421  
 Humidity: 65.0%  
 Test Distance: 3.080m [K=1.0000]  
 Remarks:

ZONAL FLUX DIAGRAM

ZONAL FLUX DIAGRAM:

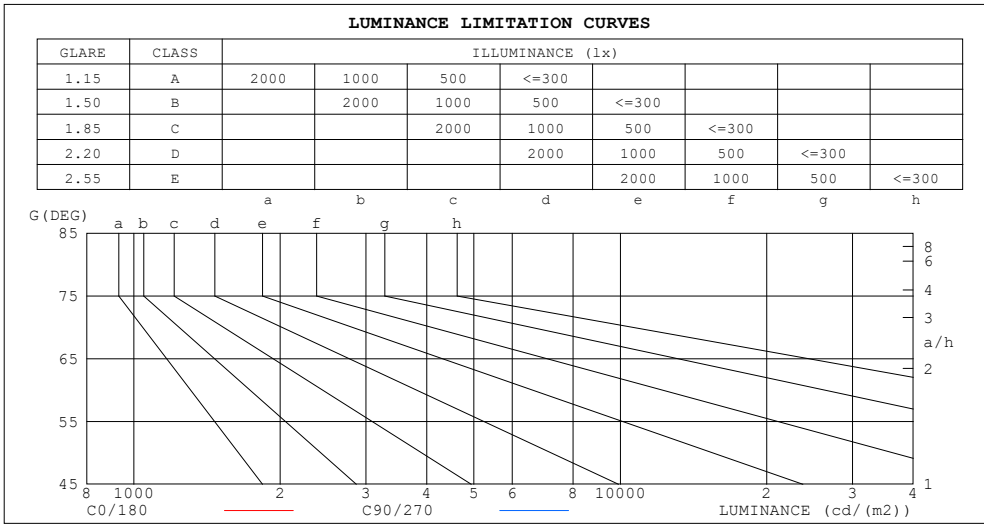
mm	C0	C45	C90	C135	C180	C225	C270	C315	mm	□ zone	□ total	%lum, lamp
10	1819	1824	1818	1842	1851	1853	1851	1870	0- 10	192.2	192.2	19,19
20	1009	987.8	984.5	965.9	940.7	1057	994.6	1039	10- 20	393.8	586.1	57.9,57.9
30	283.1	267.2	256.9	248.6	229.3	262.2	243.3	277.1	20- 30	271.5	857.5	84.7,84.7
40	62.77	64.51	63.99	61.91	59.04	59.89	59.17	61.28	30- 40	74.42	931.9	92.1,92.1
50	34.29	35.40	35.90	34.90	33.03	31.88	32.48	33.75	40- 50	34.87	966.8	95.5,95.5
60	18.54	19.15	19.48	18.85	17.83	17.11	17.42	18.15	50- 60	22.32	989.1	97.8,97.8
70	10.26	10.69	10.81	10.29	9.523	9.012	9.199	9.782	60- 70	13.67	1003	99.1,99.1
80	4.587	4.842	4.175	4.302	3.912	3.538	3.664	4.107	70- 80	7.307	1010	99.8,99.8
90	0.0336	0.0289	0.0405	0.0253	0.0409	0.0421	0.0462	0.0388	80- 90	1.783	1012	100,100
100									90-100			
110									100-110			
120									110-120			
130									120-130			
140									130-140			
150									140-150			
160									150-160			
170									160-170			
180									170-180			
DEG	LUMINOUS INTENSITY:cd									UNIT:lm		

C Range: 0 - 360DEG  
 C Interval: 22.5DEG  
 Test Speed: HIGH  
 Temperature:25.3DEG  
 Operators:  
 Test Date:2021-10-20

□ Range: 0 - 90DEG  
 □ Interval: 1.0DEG  
 Test System:EVERFINE GO-SPEX500\_V1 SYSTEM V2.00.421  
 Humidity:65.0%  
 Test Distance:3.080m [K=1.0000]  
 Remarks:

**LUMINANCE LIMITATION CURVES**

Test:U:119.96V I:0.1094A P:12.935W PF:0.9478 Freq:59.98Hz Lamp Flux:1011.88x1 lm		
NAME: ASD-CD-CR-2D15AC-CH/BK	TYPE:	WEIGHT:
SPEC.:4000K 90	DIM.:	SERIAL No.:
MFR.: ASD Lighting Corp	SUR.:	Shielding Angle:



LUMINANCE cd/(m2)		
G (DEG)	C0/180	C90/270
85	150	21
80	241	216
75	253	265
70	273	284
65	301	312
60	338	350
55	395	403
50	486	501
45	574	583

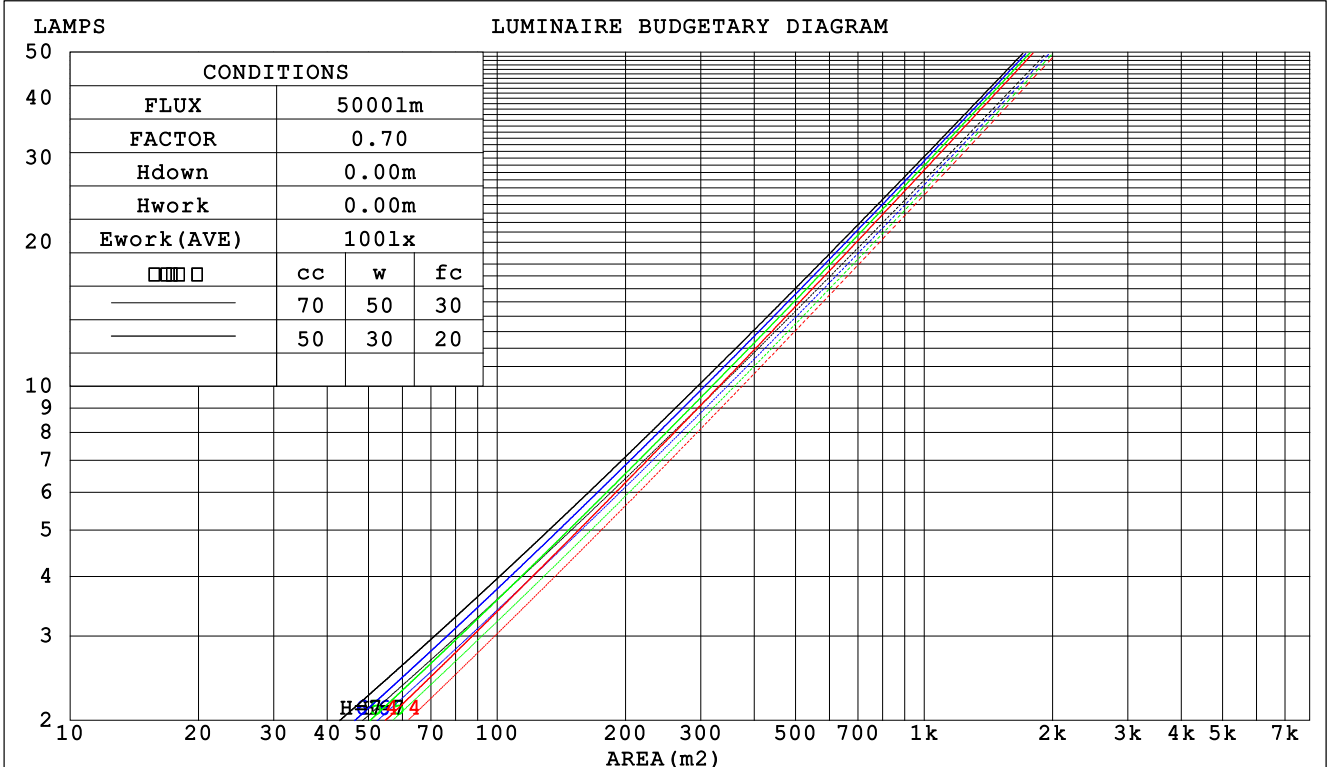
C Range: 0 - 360DEG  
 C Interval: 22.5DEG  
 Test Speed: HIGH  
 Temperature:25.3DEG  
 Operators:  
 Test Date:2021-10-20

Range: 0 - 90DEG  
 Interval: 1.0DEG  
 Test System:EVERFINE GO-SPEX500\_V1 SYSTEM V2.00.421  
 Humidity:65.0%  
 Test Distance:3.080m [K=1.0000]  
 Remarks:

**CU AND LUMINAIRE BUDGETARY ESTIMATE DIAGRAM**

Test:U:119.96V I:0.1094A P:12.935W PF:0.9478 Freq:59.98Hz Lamp Flux:1011.88x1 lm		
NAME: ASD-CD-CR-2D15AC-CH/BK	TYPE:	WEIGHT:
SPEC.:4000K 90	DIM.:	SERIAL No.:
MFR.: ASD Lighting Corp	SUR.:	Shielding Angle:

<input type="checkbox"/> cc	80%			70%			50%			30%			10%			0
<input type="checkbox"/> w	50%	30%	10%	50%	30%	10%	50%	30%	10%	50%	30%	10%	50%	30%	10%	0
<input type="checkbox"/> fc	20%			20%			20%			20%			20%			0
RCR	RCR:Room Cavity Ratio						Coefficients of Utilization(CU)									
0.0	1.19	1.19	1.19	1.16	1.16	1.16	1.11	1.11	1.11	1.06	1.06	1.06	1.02	1.02	1.02	1.00
1.0	1.11	1.09	1.07	1.09	1.07	1.05	1.05	1.03	1.02	1.01	1.00	.99	.98	.97	.96	.94
2.0	1.04	1.01	.97	1.03	.99	.96	.99	.97	.94	.96	.94	.92	.94	.92	.90	.89
3.0	.98	.94	.90	.97	.93	.89	.94	.91	.88	.92	.89	.87	.90	.87	.85	.84
4.0	.93	.88	.84	.92	.87	.84	.90	.86	.83	.88	.84	.82	.86	.83	.81	.79
5.0	.88	.83	.79	.87	.82	.79	.85	.81	.78	.84	.80	.77	.82	.79	.77	.75
6.0	.84	.79	.75	.83	.78	.74	.82	.77	.74	.80	.76	.74	.79	.76	.73	.72
7.0	.80	.75	.71	.79	.74	.71	.78	.74	.70	.77	.73	.70	.76	.72	.70	.68
8.0	.76	.71	.68	.76	.71	.67	.75	.70	.67	.74	.70	.67	.73	.69	.67	.65
9.0	.73	.68	.65	.73	.68	.64	.72	.67	.64	.71	.67	.64	.70	.67	.64	.63
10.0	.70	.65	.62	.70	.65	.62	.69	.65	.62	.68	.64	.61	.68	.64	.61	.60



C Range: 0 - 360DEG  
 C Interval: 22.5DEG  
 Test Speed: HIGH  
 Temperature:25.3DEG  
 Operators:  
 Test Date:2021-10-20

Range: 0 - 90DEG  
 Interval: 1.0DEG  
 Test System:EVERFINE GO-SPEX500\_V1 SYSTEM V2.00.421  
 Humidity:65.0%  
 Test Distance:3.080m [K=1.0000]  
 Remarks:

WEC AND CCEC

Test:U:119.96V I:0.1094A P:12.935W PF:0.9478 Freq:59.98Hz Lamp Flux:1011.88x1 lm		
NAME: ASD-CD-CR-2D15AC-CH/BK	TYPE:	WEIGHT:
SPEC.:4000K 90	DIM.:	SERIAL No.:
MFR.: ASD Lighting Corp	SUR.:	Shielding Angle:

<input type="checkbox"/> cc	80%	70%	50%	30%	10%	0
<input type="checkbox"/> w	50% 30% 10%	50% 30% 10%	50% 30% 10%	50% 30% 10%	50% 30% 10%	0
<input type="checkbox"/> fc	20%	20%	20%	20%	20%	0
RCR	RCR:Room Cavity Ratio		Wall Exitance Coefficients (WEC)			
0.0						
1.0	.168 .096 .030	.162 .092 .029	.149 .086 .027	.138 .079 .025	.127 .074 .024	
2.0	.158 .087 .027	.153 .084 .026	.142 .079 .025	.133 .074 .023	.124 .070 .022	
3.0	.149 .079 .024	.144 .077 .023	.135 .073 .022	.127 .070 .021	.119 .066 .020	
4.0	.140 .073 .021	.136 .071 .021	.129 .068 .020	.121 .065 .020	.115 .062 .019	
5.0	.132 .067 .020	.129 .066 .019	.122 .064 .019	.116 .061 .018	.111 .059 .018	
6.0	.126 .063 .018	.123 .062 .018	.117 .060 .017	.111 .058 .017	.106 .056 .017	
7.0	.119 .059 .017	.117 .058 .017	.112 .056 .016	.107 .055 .016	.102 .053 .016	
8.0	.114 .056 .016	.111 .055 .016	.107 .053 .015	.103 .052 .015	.099 .051 .015	
9.0	.109 .053 .015	.107 .052 .015	.103 .051 .014	.099 .050 .014	.095 .048 .014	
10.0	.104 .050 .014	.102 .049 .014	.099 .048 .014	.095 .047 .013	.092 .046 .013	

<input type="checkbox"/> cc	80%	70%	50%	30%	10%	0
<input type="checkbox"/> w	50% 30% 10%	50% 30% 10%	50% 30% 10%	50% 30% 10%	50% 30% 10%	0
<input type="checkbox"/> fc	20%	20%	20%	20%	20%	0
RCR	RCR:Room Cavity Ratio		Ceiling Cavity Exitance Coefficients (CCEC)			
0.0	.190 .190 .190	.163 .163 .163	.111 .111 .111	.064 .064 .064	.020 .020 .020	
1.0	.171 .157 .146	.146 .135 .125	.100 .093 .087	.057 .054 .050	.018 .017 .016	
2.0	.154 .133 .114	.132 .114 .099	.091 .079 .069	.052 .046 .040	.017 .015 .013	
3.0	.141 .113 .091	.121 .098 .079	.083 .068 .056	.048 .040 .033	.015 .013 .011	
4.0	.130 .099 .075	.112 .085 .065	.077 .059 .046	.044 .035 .027	.014 .011 .009	
5.0	.121 .087 .062	.104 .075 .054	.071 .052 .038	.041 .031 .022	.013 .010 .007	
6.0	.112 .077 .052	.097 .067 .045	.067 .047 .032	.039 .028 .019	.012 .009 .006	
7.0	.105 .069 .044	.091 .060 .038	.063 .042 .027	.036 .025 .016	.012 .008 .005	
8.0	.099 .063 .038	.085 .055 .033	.059 .038 .023	.034 .023 .014	.011 .007 .005	
9.0	.094 .057 .033	.081 .050 .029	.056 .035 .020	.033 .021 .012	.011 .007 .004	
10.0	.089 .053 .029	.077 .046 .025	.053 .032 .018	.031 .019 .011	.010 .006 .004	

C Range: 0 - 360DEG  
 C Interval: 22.5DEG  
 Test Speed: HIGH  
 Temperature:25.3DEG  
 Operators:  
 Test Date:2021-10-20

Range: 0 - 90DEG  
 Interval: 1.0DEG  
 Test System:EVERFINE GO-SPEX500\_V1 SYSTEM V2.00.421  
 Humidity:65.0%  
 Test Distance:3.080m [K=1.0000]  
 Remarks:

**UGR(Unified Glare Rating) Table**

Test:U:119.96V I:0.1094A P:12.935W PF:0.9478 Freq:59.98Hz Lamp Flux:1011.88x1 lm										
NAME: ASD-CD-CR-2D15AC-CH/BK					TYPE:			WEIGHT:		
SPEC.:4000K 90					DIM.:			SERIAL No.:		
MFR.: ASD Lighting Corp					SUR.:			Shielding Angle:		
ceiling/cavity	0.7	0.7	0.5	0.5	0.3	0.7	0.7	0.5	0.5	0.3
walls	0.5	0.3	0.5	0.3	0.3	0.5	0.3	0.5	0.3	0.3
working plane	0.2	0.2	0.2	0.2	0.2	0.2	0.2	0.2	0.2	0.2
Room dimensions	Viewed crosswise					Viewed endwise				
x = 2H y = 2H	4.3	5.2	4.6	5.3	5.5	4.3	5.2	4.6	5.3	5.5
3H	5.0	5.8	5.3	6.0	6.2	5.1	5.8	5.3	6.0	6.2
4H	5.3	6.1	5.6	6.3	6.5	5.4	6.1	5.7	6.3	6.6
6H	5.6	6.3	5.9	6.5	6.7	5.6	6.3	5.9	6.6	6.8
8H	5.6	6.3	5.9	6.6	6.8	5.7	6.3	6.0	6.6	6.8
12H	5.6	6.3	6.0	6.6	6.8	5.6	6.3	6.0	6.6	6.8
4H 2H	4.6	5.3	4.9	5.5	5.8	4.6	5.3	4.9	5.6	5.8
3H	5.5	6.1	5.8	6.4	6.6	5.5	6.1	5.8	6.4	6.7
4H	5.9	6.5	6.2	6.8	7.1	6.0	6.5	6.3	6.8	7.1
6H	6.3	6.8	6.6	7.1	7.5	6.3	6.8	6.7	7.1	7.5
8H	6.4	6.9	6.8	7.2	7.6	6.4	6.9	6.8	7.2	7.6
12H	6.4	6.9	6.8	7.2	7.6	6.4	6.8	6.8	7.2	7.6
8H 4H	6.0	6.5	6.4	6.9	7.2	6.1	6.6	6.5	6.9	7.3
6H	6.5	6.9	7.0	7.3	7.7	6.5	6.9	7.0	7.3	7.8
8H	6.7	7.1	7.2	7.5	7.9	6.7	7.0	7.1	7.5	7.9
12H	6.9	7.2	7.3	7.6	8.1	6.7	7.0	7.2	7.4	7.9
12H 4H	6.0	6.5	6.4	6.8	7.2	6.1	6.5	6.5	6.9	7.3
6H	6.6	6.9	7.0	7.3	7.8	6.6	6.9	7.0	7.3	7.8
8H	6.8	7.1	7.3	7.5	8.0	6.7	7.0	7.2	7.5	8.0
Variations with the observer position at spacings:										
S = 1.0H	+ 0.5 / - 0.6					+ 0.5 / - 0.6				
1.5H	+ 0.7 / - 0.4					+ 0.7 / - 0.4				
2.0H	+ 0.8 / - 0.6					+ 0.8 / - 0.6				

CIE Pub.117, 1012 lm Total Lamp Luminous Flux Correct (8log(F/F0) = 0.0)  
 Area: 0.111111 m2

C Range: 0 - 360DEG  
 C Interval: 22.5DEG  
 Test Speed: HIGH  
 Temperature:25.3DEG  
 Operators:  
 Test Date:2021-10-20

Range: 0 - 90DEG  
 Interval: 1.0DEG  
 Test System:EVERFINE GO-SPEX500\_V1 SYSTEM V2.00.421  
 Humidity:65.0%  
 Test Distance:3.080m [K=1.0000]  
 Remarks:

**UTILIZATION FACTORS TABLE**

Test:U:119.96V I:0.1094A P:12.935W PF:0.9478 Freq:59.98Hz Lamp Flux:1011.88x1 lm		
NAME: ASD-CD-CR-2D15AC-CH/BK	TYPE:	WEIGHT:
SPEC.:4000K 90	DIM.:	SERIAL No.:
MFR.: ASD Lighting Corp	SUR.:	Shielding Angle:

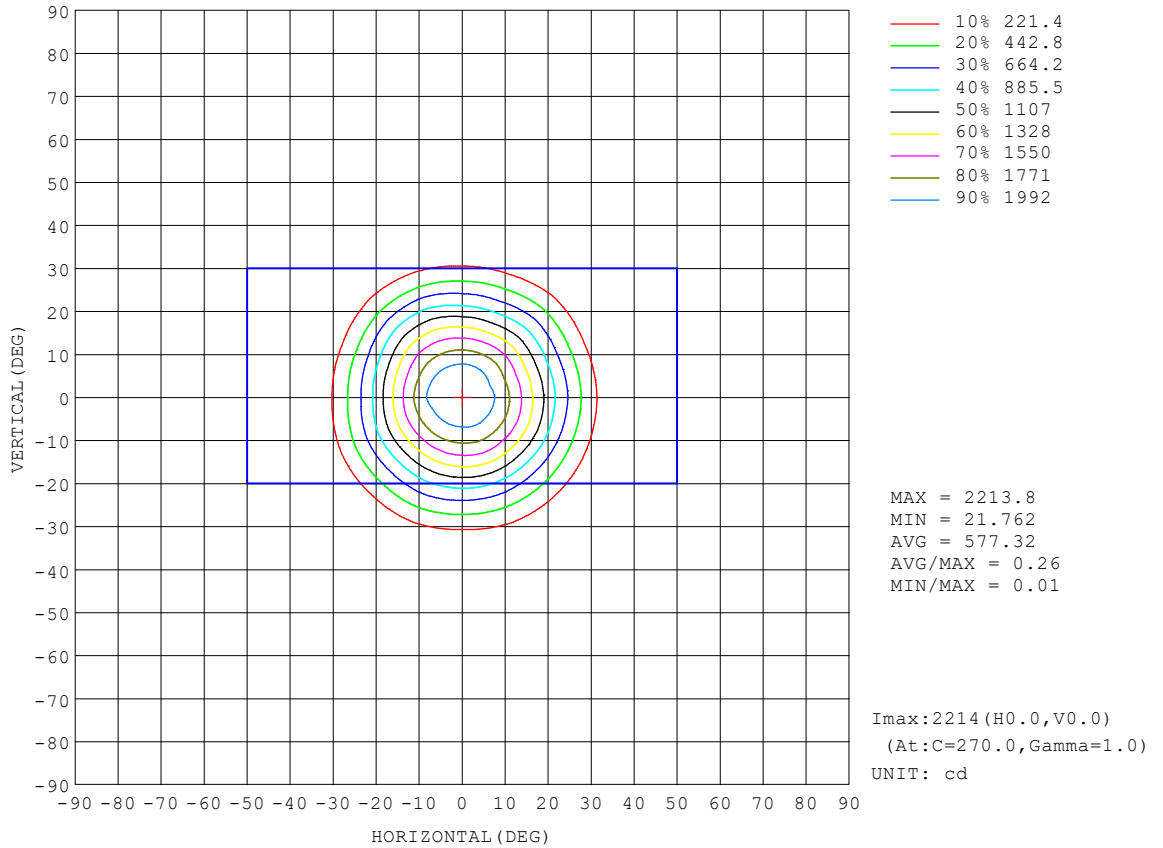
REFLECTANCE										
Ceiling	0.8	0.8	0.8	0.7	0.7	0.7	0.5	0.5	0.5	0
Walls	0.7	0.5	0.3	0.7	0.5	0.3	0.7	0.5	0.3	0
Working plane	0.2	0.2	0.2	0.2	0.2	0.2	0.2	0.2	0.2	0
ROOM INDEX	UTILIZATION FACTORS (PERCENT) $k(RI) \times RCR = 5$									
k = 0.60	87	80	76	86	80	76	85	80	76	72
0.80	94	88	84	93	88	84	92	87	84	80
1.00	99	93	89	98	92	89	96	92	88	84
1.25	103	97	94	101	97	93	99	95	92	88
1.50	105	100	97	104	100	96	102	98	95	91
2.00	108	104	100	107	103	100	104	101	98	93
2.50	110	106	103	108	105	102	105	102	100	94
3.00	111	108	105	110	106	104	106	104	102	95
4.00	114	111	108	111	109	107	108	106	104	97
5.00	115	112	111	113	111	109	109	107	106	98
ROOM INDEX	UF(total)									Direct
According to DIN EN 13032-2 2004			Suspended				SHRNOM = 1.25			

C Range: 0 - 360DEG  
 C Interval: 22.5DEG  
 Test Speed: HIGH  
 Temperature:25.3DEG  
 Operators:  
 Test Date:2021-10-20

Range: 0 - 90DEG  
 Interval: 1.0DEG  
 Test System:EVERFINE GO-SPEX500\_V1 SYSTEM V2.00.421  
 Humidity:65.0%  
 Test Distance:3.080m [K=1.0000]  
 Remarks:

**ISOCANDELA DIAGRAM**

Test:U:119.96V I:0.1094A P:12.935W PF:0.9478 Freq:59.98Hz Lamp Flux:1011.88x1 lm		
NAME: ASD-CD-CR-2D15AC-CH/BK	TYPE:	WEIGHT:
SPEC.:4000K 90	DIM.:	SERIAL No.:
MFR.: ASD Lighting Corp	SUR.:	Shielding Angle:



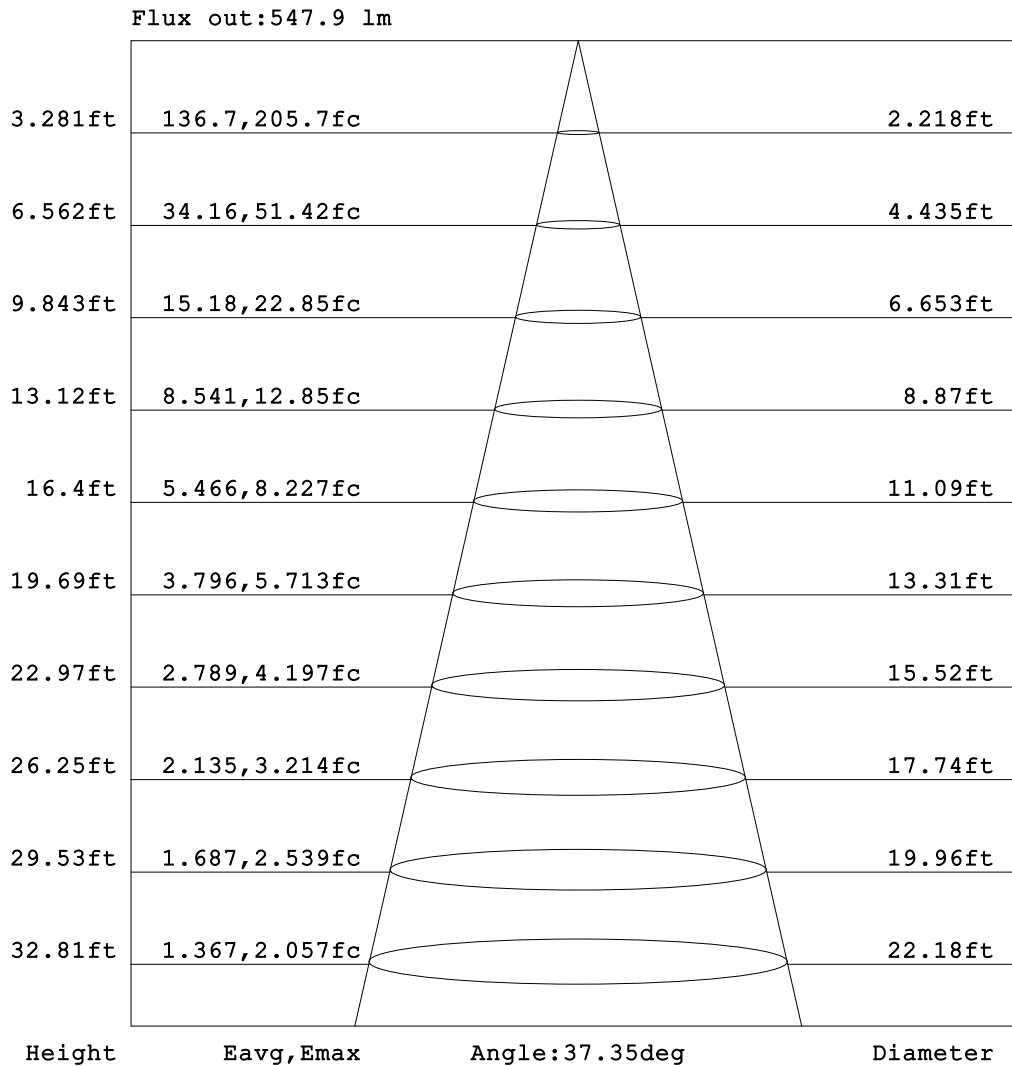
C Range: 0 - 360DEG  
 C Interval: 22.5DEG  
 Test Speed: HIGH  
 Temperature:25.3DEG  
 Operators:  
 Test Date:2021-10-20

Range: 0 - 90DEG  
 Interval: 1.0DEG  
 Test System:EVERFINE GO-SPEX500\_V1 SYSTEM V2.00.421  
 Humidity:65.0%  
 Test Distance:3.080m [K=1.0000]  
 Remarks:



**AAI Figure**

Test:U:119.96V I:0.1094A P:12.935W PF:0.9478 Freq:59.98Hz Lamp Flux:1011.88x1 lm		
NAME: ASD-CD-CR-2D15AC-CH/BK	TYPE:	WEIGHT:
SPEC.:4000K 90	DIM.:	SERIAL No.:
MFR.: ASD Lighting Corp	SUR.:	Shielding Angle:



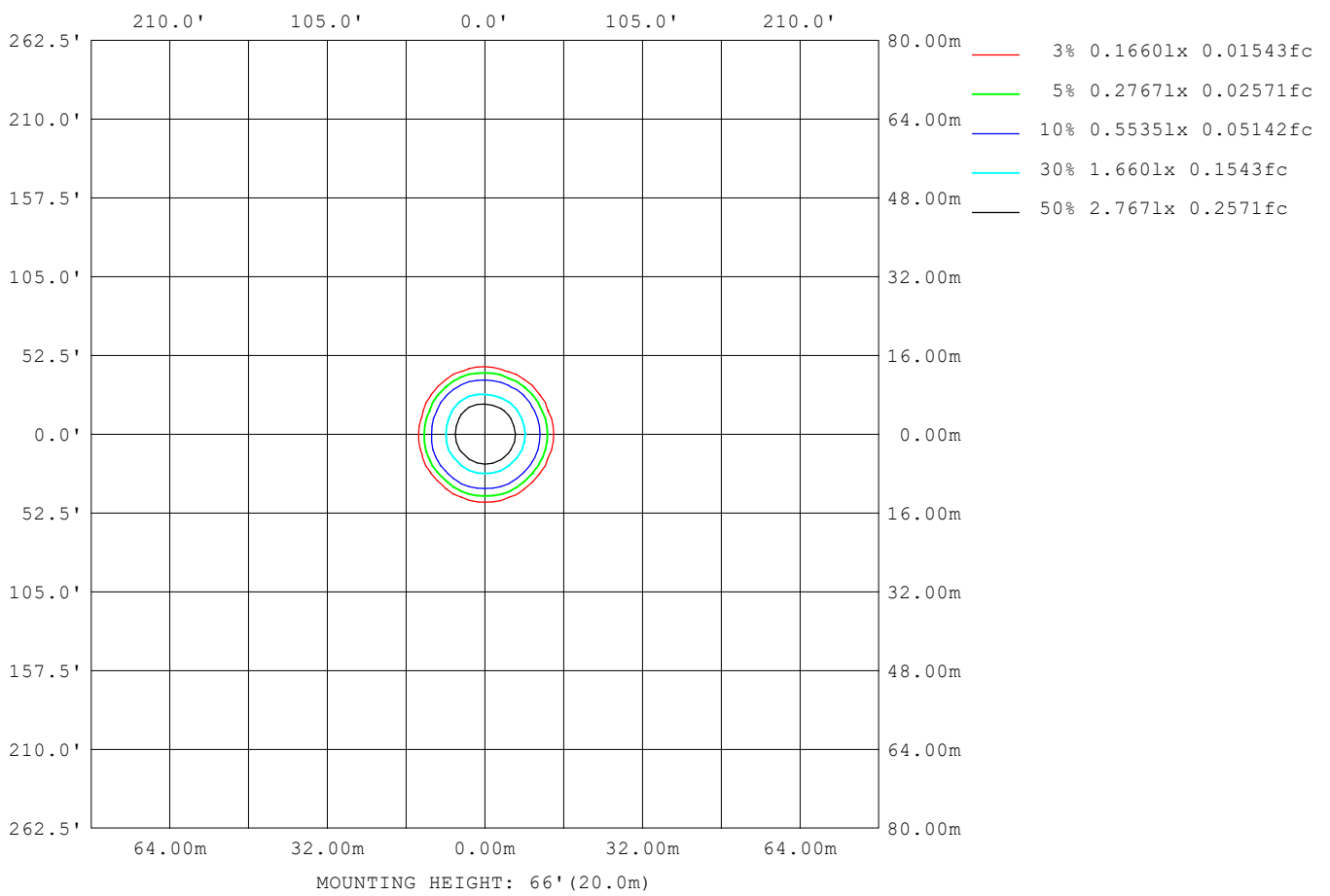
Note:The Curves indicate the illuminated area and the average illumination when the luminaire is at different distance.

C Range: 0 - 360DEG  
 C Interval: 22.5DEG  
 Test Speed: HIGH  
 Temperature:25.3DEG  
 Operators:  
 Test Date:2021-10-20

Range: 0 - 90DEG  
 Interval: 1.0DEG  
 Test System:EVERFINE GO-SPEX500\_V1 SYSTEM V2.00.421  
 Humidity:65.0%  
 Test Distance:3.080m [K=1.0000]  
 Remarks:

**ISOLUX DIAGRAM**

Test:U:119.96V I:0.1094A P:12.935W PF:0.9478 Freq:59.98Hz Lamp Flux:1011.88x1 lm		
NAME: ASD-CD-CR-2D15AC-CH/BK	TYPE:	WEIGHT:
SPEC.:4000K 90	DIM.:	SERIAL No.:
MFR.: ASD Lighting Corp	SUR.:	Shielding Angle:



C Range: 0 - 360DEG  
 C Interval: 22.5DEG  
 Test Speed: HIGH  
 Temperature:25.3DEG  
 Operators:  
 Test Date:2021-10-20

Range: 0 - 90DEG  
 Interval: 1.0DEG  
 Test System:EVERFINE GO-SPEX500\_V1 SYSTEM V2.00.421  
 Humidity:65.0%  
 Test Distance:3.080m [K=1.0000]  
 Remarks:

**LED Avg.L Report**

Test:U:119.96V I:0.1094A P:12.935W PF:0.9478 Freq:59.98Hz Lamp Flux:1011.88x1 lm		
NAME: ASD-CD-CR-2D15AC-CH/BK	TYPE:	WEIGHT:
SPEC.:4000K 90	DIM.:	SERIAL No.:
MFR.: ASD Lighting Corp	SUR.:	Shielding Angle:

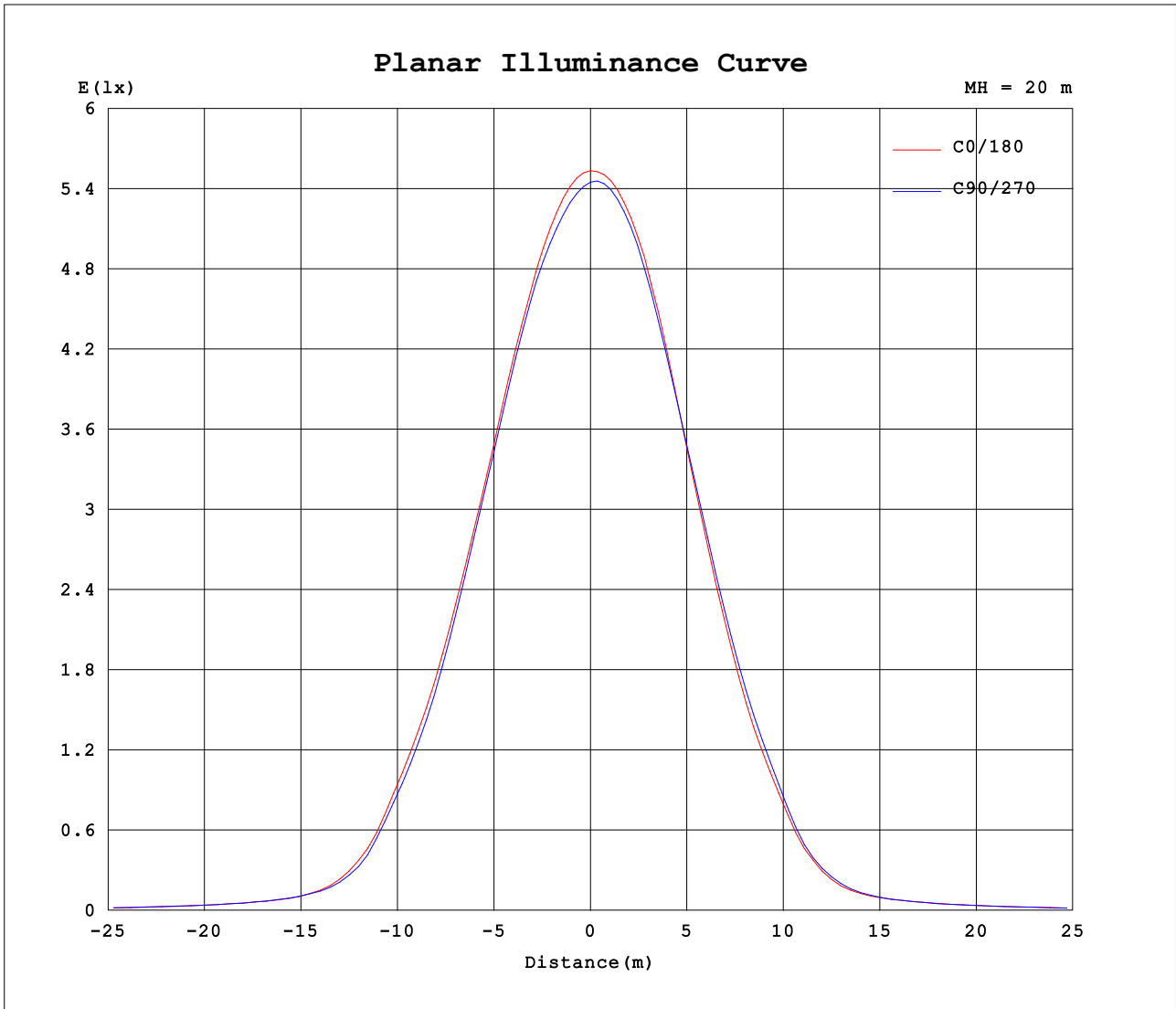
AvgL	cd/m2
L_0~180 (65) av	289
L_0~180 (75) av	238
L_0~180 (85) av	132
L_90~270 (65) av	293
L_90~270 (75) av	240
L_90~270 (85) av	76
L_45 (65) av	291
L_45 (75) av	239
L_45 (85) av	161

Standard: GB/T 29293-2012

C Range: 0 - 360DEG  
 C Interval: 22.5DEG  
 Test Speed: HIGH  
 Temperature:25.3DEG  
 Operators:  
 Test Date:2021-10-20

Range: 0 - 90DEG  
 Interval: 1.0DEG  
 Test System:EVERFINE GO-SPEX500\_V1 SYSTEM V2.00.421  
 Humidity:65.0%  
 Test Distance:3.080m [K=1.0000]  
 Remarks:

**Planar Illuminance Curve**



C Range: 0 - 360DEG  
 C Interval: 22.5DEG  
 Test Speed: HIGH  
 Temperature: 25.3DEG  
 Operators:  
 Test Date: 2021-10-20

Range: 0 - 90DEG  
 Interval: 1.0DEG  
 Test System: EVERFINE GO-SPEX500\_V1 SYSTEM V2.00.421  
 Humidity: 65.0%  
 Test Distance: 3.080m [K=1.0000]  
 Remarks:

LUMINOUS DISTRIBUTION INTENSITY DATA

Test:U:119.96V I:0.1094A P:12.935W PF:0.9478 Freq:59.98Hz Lamp Flux:1011.88x1 lm		
NAME: ASD-CD-CR-2D15AC-CH/BK	TYPE:	WEIGHT:
SPEC.:4000K 90	DIM.:	SERIAL No.:
MFR.: ASD Lighting Corp	SUR.:	Shielding Angle:

Table--1

UNIT: cd

C (DEG) □ (DEG)	0	22.5	45	67.5	90	112.5	135	157.5	180	202.5	225	247.5	270	292.5	315	337.5			
0	2185	2185	2185	2185	2185	2185	2185	2185	2185	2185	2185	2185	2185	2185	2185	2185			
5	2085	2074	2068	2069	2070	2080	2092	2111	2115	2118	2121	2116	2121	2118	2116	2102			
10	1819	1827	1824	1830	1818	1827	1842	1863	1851	1834	1853	1847	1851	1858	1870	1843			
15	1430	1451	1437	1442	1428	1420	1417	1447	1408	1419	1487	1478	1447	1444	1479	1446			
20	1009	1011	988	990	984	986	966	994	941	967	1057	1059	995	983	1039	1005			
25	627	605	591	596	591	608	586	604	547	566	638	647	597	589	645	612			
30	283	271	267	268	257	267	249	253	229	231	262	264	243	243	277	261			
35	109	106	107	109	106	107	102	101	91.7	93.5	103	101	98.8	99.2	109	107			
40	62.8	63.4	64.5	64.3	64.0	63.7	61.9	60.9	59.0	59.1	59.9	58.7	59.2	58.9	61.3	61.7			
45	44.5	45.3	45.6	45.8	45.9	45.7	44.9	44.2	43.2	42.2	41.9	41.7	42.6	43.1	43.8	44.3			
50	34.3	35.1	35.4	35.8	35.9	35.8	34.9	34.1	33.0	32.1	31.9	31.7	32.5	33.0	33.7	33.9			
55	24.9	25.3	25.6	25.8	25.7	25.5	24.9	24.4	23.7	23.2	23.1	22.8	23.4	23.7	24.2	24.5			
60	18.5	19.0	19.2	19.5	19.5	19.4	18.9	18.4	17.8	17.2	17.1	17.0	17.4	17.7	18.2	18.3			
65	13.9	14.3	14.5	14.7	14.7	14.6	14.1	13.7	13.2	12.7	12.6	12.5	12.8	13.1	13.5	13.7			
70	10.3	10.6	10.7	10.9	10.8	10.7	10.3	9.95	9.52	9.14	9.01	8.97	9.20	9.44	9.78	10.04			
75	7.19	7.46	7.60	7.71	7.63	7.47	7.15	6.84	6.47	6.14	6.03	6.00	6.18	6.39	6.70	6.95			
80	4.59	4.83	4.84	4.51	4.18	4.17	4.30	4.21	3.91	3.64	3.54	3.51	3.66	3.84	4.11	4.35			
85	1.43	2.53	1.78	0.80	0.21	0.48	1.39	1.89	1.13	1.63	1.35	1.19	1.27	1.42	1.73	2.22			
90	0.03	0.03	0.03	0.03	0.04	0.03	0.03	0.03	0.04	0.04	0.04	0.04	0.05	0.04	0.04	0.04			

C Range: 0 - 360DEG  
 C Interval: 22.5DEG  
 Test Speed: HIGH  
 Temperature:25.3DEG  
 Operators:  
 Test Date:2021-10-20

□ Range: 0 - 90DEG  
 □ Interval: 1.0DEG  
 Test System:EVERFINE GO-SPEX500\_V1 SYSTEM V2.00.421  
 Humidity:65.0%  
 Test Distance:3.080m [K=1.0000]  
 Remarks: