



LED FABRIC DRUM FLUSHMOUNT

► **DESIGN** - LED FABRIC DRUM FLUSHMOUNT has a modern, multipurpose design and a stylish look with efficient lighting. Fabric-covered drum creates a cozy feel. Durable housing resistant to rust and impact along with an acrylic lens provide many years of use. It is designed to operate on 120V circuits.

► **COLOR SELECTABLE** - You can choose either a 3,000K warm white, 4,000K cool white or 5,000K daylight color temperature.

► **DIMMING** - Smooth triac dimming capabilities ranging from 10% to 100% with modern LED dimmers allow you to control the look and feel of your space.

► **APPLICATION** - The LED FABRIC DRUM FLUSHMOUNT provides bright, yet smooth lighting for your family room, bedroom, hallway, corridor, or any other common areas. This fixture is also Damp Locations rated.

► **ADVANTAGES** - With a lifespan of 50,000 hours, these fixtures are made to last decades under normal operation! ASD provides a 5-year limited warranty along with ETL and Energy Star certifications to guarantee top quality products and safety!

Catalog number	
Notes	
Type	



Fabric:	White	Natural	White	Natural
Finish:	Nickel	Nickel	Bronze	Bronze

Model	Size	Watts	Voltage	Dimmable	Lumens	CCT	Fabric	Finish	Dimensions (LxWxH)
ASD-LFMFD-15D23CC-WH/NK	15 inch	23W	120 V	TRIAC	1,900/2,072/2,020 lm	3CCT (3,000/4,000/5,000 K)	White	Brushed nickel	15" x 15" x 5"
ASD-LFMFD-15D23CC-NA/NK	15 inch	23W	120 V	TRIAC	1,900/2,072/2,020 lm	3CCT (3,000/4,000/5,000 K)	Natural	Brushed nickel	15" x 15" x 5"
ASD-LFMFD-15D23CC-WH/BZ	15 inch	23W	120 V	TRIAC	1,670/1,830/1,780 lm	3CCT (3,000/4,000/5,000 K)	White	Oil rubbed bronze	15" x 15" x 5"
ASD-LFMFD-15D23CC-NA/BZ	15 inch	23W	120 V	TRIAC	1,670/1,830/1,780 lm	3CCT (3,000/4,000/5,000 K)	Natural	Oil rubbed bronze	15" x 15" x 5"

ORDERING INFORMATION

Model	UPC	Pcs. per carton	Carton size	Carton weight	GTIN 14
ASD-LFMFD-15D23CC-WH/NK	810050730723	4	17.7" x 17.7" x 24"	22.9 lbs	10810050730720
ASD-LFMFD-15D23CC-NA/NK	810050730730	4	17.7" x 17.7" x 24"	22.9 lbs	10810050730737
ASD-LFMFD-15D23CC-WH/BZ	810050732321	4	17.7" x 17.7" x 24"	22.9 lbs	10810050732328
ASD-LFMFD-15D23CC-NA/BZ	810050732345	4	17.7" x 17.7" x 24"	22.9 lbs	10810050732342

For most up-to-date spec sheets please refer to asd-lighting.com

ASD LIGHTING CORP

E-mail: orders@asd-lighting.com | Web site: www.asd-lighting.com





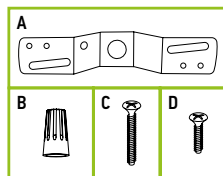
LED FABRIC DRUM FLUSHMOUNT

PRODUCT SPECIFICATIONS:

Construction & Materials				
Housing	Steel			
Diffuser	Acrylic			
Fabric color	White, Natural			
Finish color	Brushed nickel, Oil rubbed bronze			
Weight	2.9 lbs (1.3 kg)			
Environmental system				
Work environment	Suitable for Damp Locations			
Operating temperature	-4°F to 113°F (-20°C to 45°C)			
L-70 life	> 50,000 hrs			
Optical system				
Luminous flux	ASD-LFMFD-15D23CC-WH/NK	1,900/2,072/2,020 lm		
	ASD-LFMFD-15D23CC-NA/NK			
	ASD-LFMFD-15D23CC-WH/BZ	1,670/1,830/1,780 lm		
Color temperature	3CCT (3,000/4,000/5,000 K)			
	CRI > 80			
Electrical system				
Input voltage	120 V			
Max input current	0.4 A			
Inrush current (Action time)	0.2 A (0.5 S)			
Off state power	0W			
Power consumption	23W			
Power factor	> 0.9			
Surge protection DM/CM	1.25 kV / 1.25 kV			
Dimming range				
10-100%				
Dimming compatible controls				
Brand	Lutron		Leviton	
Models	MACL-153MLH-WH	DVCL-153PR	R02-DW6HD-2RW	DSL06
	STCL-153PH-WH	P-PKG1W	R00-RNL06-0TW	
	PD-6WCL-WH-R		R68-06674-POT	
Regular and voluntary certifications				
5-year limited warranty				
Energy Star listed				
cETLus certified 4001256				

PACKAGE CONTENTS:

Description	Q-ty
LED Fabric Drum Flushmount	1
Crossbar (A)	1
Wire nut (B)	3
1-1/4" screw (C)	2
3/4" screw (D)	2
Box	1



INSTALLATION GUIDE

IMPORTANT SAFETY INFORMATION:

Please read all the instructions below before installation.

- Make sure that the supply voltage corresponds to the rated product voltage.
- The product must be installed by a qualified electrician in accordance with the National Electrical Code and corresponding local codes.
- If the product is damaged, do not use it.

⚠ WARNING

RISK OF PERSONAL INJURY – READ and follow all WARNINGS and installation instructions. Keep or give to the owner for future reference.

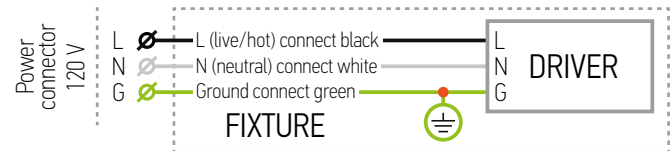
Risk of cuts: Wear gloves to prevent cuts or abrasions when removing from carton, handling, installing, and maintaining this product.

Risk of electric shock: This product must be installed in accordance with the applicable installation code by a person familiar with the construction and operation of the product and the hazards involved.

Risk of Fire: Minimum 194°F supply conductors. Consult a qualified electrician to ensure correct branch circuit conductor.

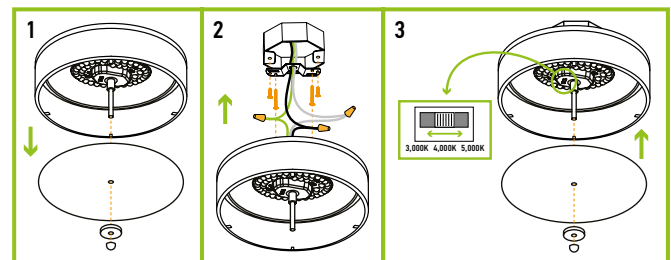
ASD® assumes no responsibility for claims arising out of improper or careless Installation or handling of this product.

ELECTRICAL SCHEMATIC DIAGRAM:



INSTALLATION STEPS:

- Unscrew the decorative washer and decorative cap and remove the lens.
- Attach the crossbar to the outlet box using the smaller screws. Beside smaller screws, attach the longer screws with cap pointed down. Connect the wires: Black to Black, White to White, Ground to Ground. Secure the connection with wire nuts.
- Choose either 3,000K, 4,000K or 5,000K with a simple switch. Place the fixture pan over the outlet box and feed longer screws through keyhole slots. Rotate the fixture pan until screws lock into the narrow end of the keyhole slots. Tighten the screws firmly. Place the lens and secure it with decorative washer and decorative cap.



For most up-to-date spec sheets please refer to asd-lighting.com

ASD LIGHTING CORP

E-mail: orders@asd-lighting.com | Web site: www.asd-lighting.com

