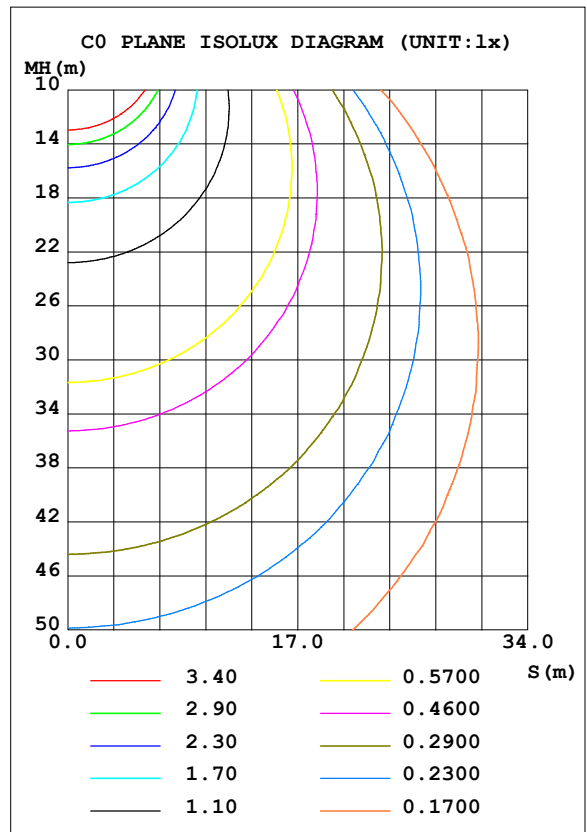
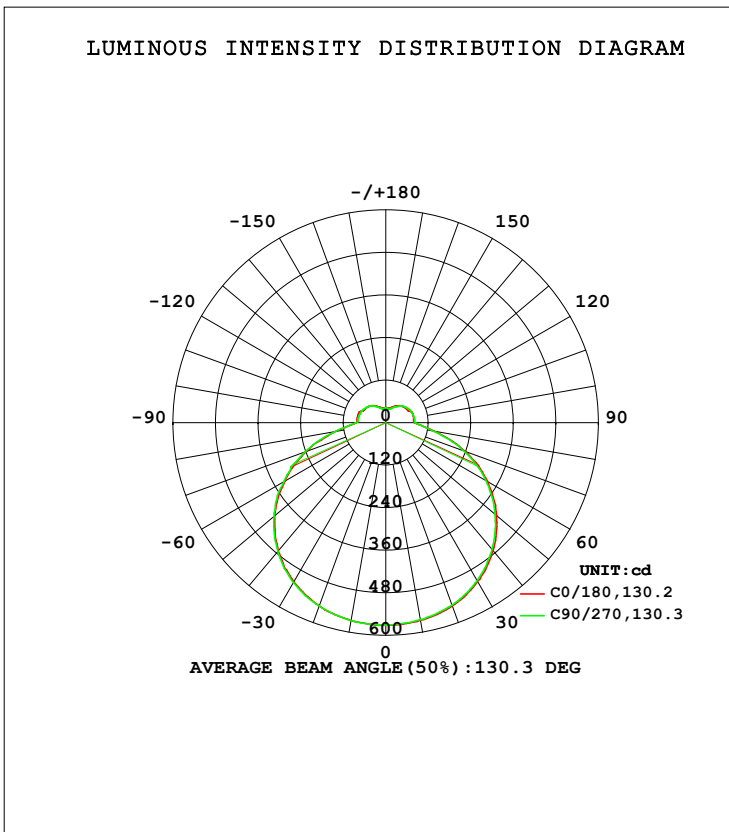


LUMINAIRE PHOTOMETRIC TEST REPORT

Test:U:119.61V I:0.3838A P:41.376W PF:0.9005 Freq:0Hz Lamp Flux:2468.83x1 lm		
NAME: ADS lighting Corp	TYPE:	WEIGHT:
SPEC.:ASD-LFC-AF-20D42-AC	DIM.:	SERIAL No.:
MFR.: ADS lighting Corp	SUR.:0.485*0.485	Shielding Angle:

DATA OF LAMP		PHOTOMETRIC DATA Eff: 59.67 lm/W			
MODEL	LFC-AF-20D42-AC-5000K	Imax (cd)	572.0	S/MH (C0/180)	1.35
NOMINAL POWER (W)	--	LOR (%)	100.0	S/MH (C90/270)	1.36
RATED VOLTAGE (V)	--	TOTAL FLUX (lm)	2468.8	<input type="checkbox"/> UP, DN (C0-180)	8.8, 41.0
NOMINAL FLUX (lm)	2468.83	CIE CLASS	SEMI-D.	<input type="checkbox"/> UP, DN (C180-360)	8.7, 41.5
LAMPS INSIDE	1	<input type="checkbox"/> up (%)	17.5	CIBSE SHR NOM	1.50
TEST VOLTAGE (V)	--	<input type="checkbox"/> down (%)	82.5	CIBSE SHR MAX	1.55



C Range: 0 - 360DEG  
 C Interval: 22.5DEG  
 Test Speed: HIGH  
 Temperature: 25.3DEG  
 Operators: admin  
 Test Date: 2022-03-16

Range: 0 - 180DEG  
 Interval: 1.0DEG  
 Test System: EVERFINE GO-2000B\_V1 SYSTEM V2.00.411  
 Humidity: 65.0%  
 Test Distance: 8.780m [K=1.0000]  
 Remarks:

ZONAL FLUX DIAGRAM

ZONAL FLUX DIAGRAM:

mm	C0	C45	C90	C135	C180	C225	C270	C315	mm	□ zone	□ total	%lum,lamp
10	566.2	565.8	563.9	565.0	567.1	566.8	566.7	566.3	0- 10	54.24	54.24	2.2,2.2
20	549.8	547.7	547.5	547.2	549.7	549.5	550.1	550.3	10- 20	158.1	212.3	8.6,8.6
30	517.6	516.8	514.9	514.8	519.2	520.7	521.5	519.0	20- 30	247.0	459.3	18.6,18.6
40	471.2	467.5	466.9	466.6	472.9	472.9	473.8	472.3	30- 40	310.5	769.9	31.2,31.2
50	408.1	404.2	402.1	403.9	409.1	410.7	412.2	410.3	40- 50	340.2	1110	45,45
60	331.3	326.9	326.9	327.4	327.9	329.4	331.6	330.6	50- 60	330.7	1441	58.4,58.4
70	238.6	233.6	233.7	235.1	239.0	240.7	242.1	240.7	60- 70	282.5	1723	69.8,69.8
80	138.1	134.7	135.7	139.0	143.0	143.2	143.7	144.1	70- 80	199.1	1922	77.9,77.9
90	81.13	81.04	82.83	83.20	83.17	82.69	83.11	82.16	80- 90	115.3	2038	82.5,82.5
100	80.09	79.73	81.79	81.70	81.63	78.34	79.03	78.43	90-100	87.54	2125	86.1,86.1
110	80.20	77.92	79.63	79.24	81.37	76.43	77.09	76.95	100-110	84.16	2209	89.5,89.5
120	71.85	73.80	76.17	75.28	71.78	73.51	74.18	73.93	110-120	75.58	2285	92.5,92.5
130	68.48	64.64	70.16	66.28	68.35	65.70	68.84	66.28	120-130	63.01	2348	95.1,95.1
140	62.47	55.94	61.17	57.79	63.14	57.50	62.45	57.83	130-140	48.80	2397	97.1,97.1
150	54.13	49.16	51.64	50.53	54.25	50.56	52.54	50.47	140-150	34.47	2431	98.5,98.5
160	45.78	42.24	42.73	43.13	46.10	43.60	43.69	44.18	150-160	22.10	2453	99.4,99.4
170	41.82	41.40	40.11	41.96	41.09	42.32	40.03	40.54	160-170	11.72	2465	99.8,99.8
180	42.09	39.90	43.13	39.88	42.10	39.90	43.12	39.87	170-180	3.877	2469	100,100
DEG	LUMINOUS INTENSITY:cd									UNIT:lm		

Conical surface Flux(90deg): 938.61 lm

%lum = 38.0%

%lamp = 38.0%

Conical surface Flux(120deg): 1440.8 lm

%lum = 58.4%

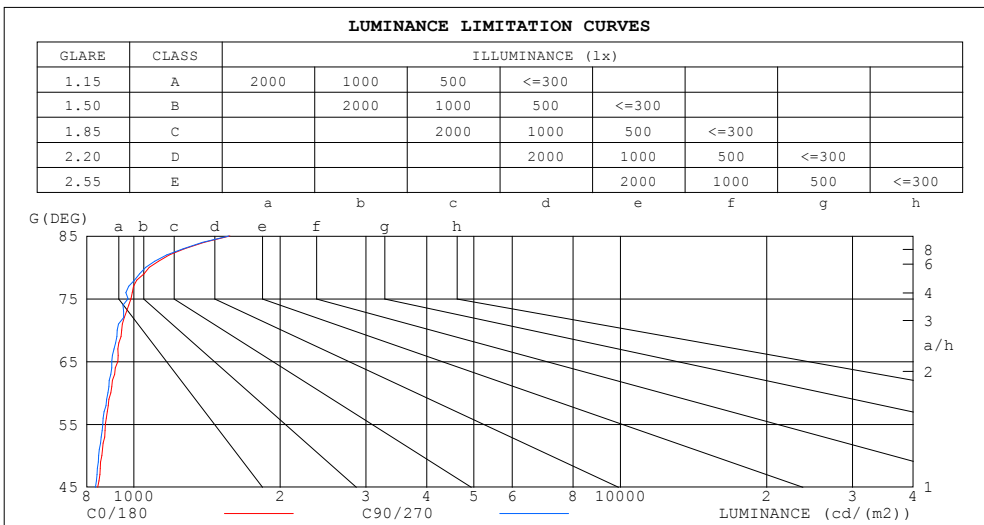
%lamp = 58.4%

C Range: 0 - 360DEG  
 C Interval: 22.5DEG  
 Test Speed: HIGH  
 Temperature:25.3DEG  
 Operators:admin  
 Test Date:2022-03-16

□ Range: 0 - 180DEG  
 □ Interval: 1.0DEG  
 Test System:EVERFINE GO-2000B\_V1 SYSTEM V2.00.411  
 Humidity:65.0%  
 Test Distance:8.780m [K=1.0000]  
 Remarks:

**LUMINANCE LIMITATION CURVES**

Test:U:119.61V I:0.3838A P:41.376W PF:0.9005 Freq:0Hz Lamp Flux:2468.83x1 lm		
NAME: ADS lighting Corp	TYPE:	WEIGHT:
SPEC.:ASD-LFC-AF-20D42-AC	DIM.:	SERIAL No.:
MFR.: ADS lighting Corp	SUR.:0.485*0.485	Shielding Angle:



LUMINANCE cd/(m2)		
G (DEG)	C0/180	C90/270
85	1575	1569
80	1076	1057
75	987	974
70	944	925
65	927	901
60	897	885
55	874	864
50	859	847
45	843	834

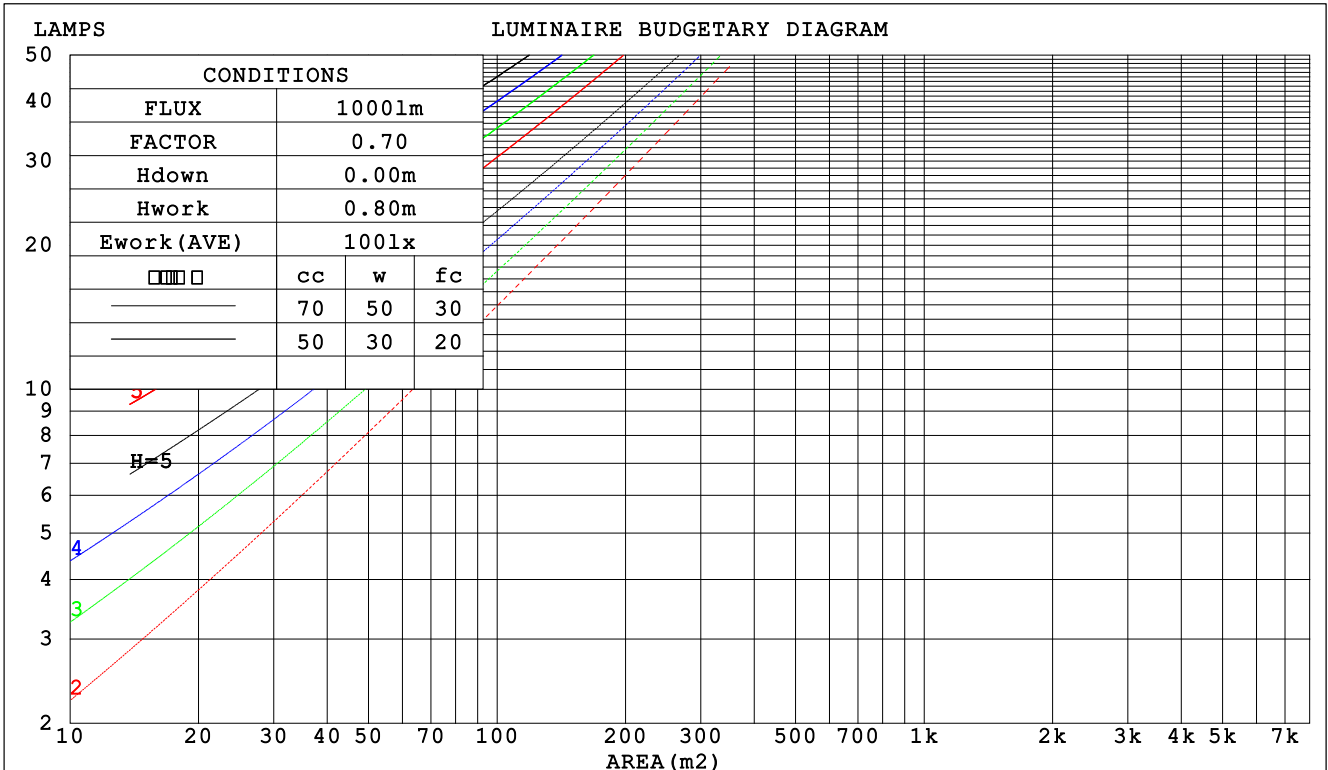
C Range: 0 - 360DEG  
 C Interval: 22.5DEG  
 Test Speed: HIGH  
 Temperature:25.3DEG  
 Operators:admin  
 Test Date:2022-03-16

Range: 0 - 180DEG  
 Interval: 1.0DEG  
 Test System:EVERFINE GO-2000B\_V1 SYSTEM V2.00.411  
 Humidity:65.0%  
 Test Distance:8.780m [K=1.0000]  
 Remarks:

CU AND LUMINAIRE BUDGETARY ESTIMATE DIAGRAM

Test:U:119.61V I:0.3838A P:41.376W PF:0.9005 Freq:0Hz Lamp Flux:2468.83x1 lm		
NAME: ADS lighting Corp	TYPE:	WEIGHT:
SPEC.:ASD-LFC-AF-20D42-AC	DIM.:	SERIAL No.:
MFR.: ADS lighting Corp	SUR.:0.485*0.485	Shielding Angle:

□cc	80%			70%			50%			30%			10%			0
□w	50%	30%	10%	50%	30%	10%	50%	30%	10%	50%	30%	10%	50%	30%	10%	0
□fc	20%			20%			20%			20%			20%			0
RCR	RCR:Room Cavity Ratio						Coefficients of Utilization(CU)									
0.0	1.15	1.15	1.15	1.10	1.10	1.10	1.01	1.01	1.01	.93	.93	.93	.86	.86	.86	.83
1.0	.98	.93	.88	.94	.89	.85	.86	.83	.79	.79	.76	.74	.73	.71	.69	.65
2.0	.84	.77	.70	.81	.74	.68	.74	.69	.64	.68	.64	.60	.63	.59	.56	.53
3.0	.73	.64	.58	.70	.62	.56	.65	.58	.53	.60	.54	.50	.55	.50	.47	.44
4.0	.64	.55	.48	.62	.53	.47	.57	.50	.44	.53	.47	.42	.48	.44	.39	.37
5.0	.57	.48	.41	.55	.46	.40	.51	.43	.38	.47	.41	.36	.43	.38	.34	.31
6.0	.51	.42	.35	.49	.41	.34	.46	.38	.33	.42	.36	.31	.39	.34	.30	.27
7.0	.46	.37	.31	.44	.36	.30	.41	.34	.29	.38	.32	.27	.36	.30	.26	.24
8.0	.42	.33	.27	.40	.32	.27	.38	.31	.25	.35	.29	.24	.33	.27	.23	.21
9.0	.38	.30	.24	.37	.29	.24	.34	.28	.23	.32	.26	.22	.30	.25	.21	.19
10.0	.35	.27	.22	.34	.26	.21	.32	.25	.21	.30	.24	.20	.28	.23	.19	.17



C Range: 0 - 360DEG  
 C Interval: 22.5DEG  
 Test Speed: HIGH  
 Temperature:25.3DEG  
 Operators:admin  
 Test Date:2022-03-16

□ Range: 0 - 180DEG  
 □ Interval: 1.0DEG  
 Test System:EVERFINE GO-2000B\_V1 SYSTEM V2.00.411  
 Humidity:65.0%  
 Test Distance:8.780m [K=1.0000]  
 Remarks:

**WEC AND CCEC**

Test:U:119.61V I:0.3838A P:41.376W PF:0.9005 Freq:0Hz Lamp Flux:2468.83x1 lm		
NAME: ADS lighting Corp	TYPE:	WEIGHT:
SPEC.:ASD-LFC-AF-20D42-AC	DIM.:	SERIAL No.:
MFR.: ADS lighting Corp	SUR.:0.485*0.485	Shielding Angle:

<input type="checkbox"/> cc	80%			70%			50%			30%			10%			0
<input type="checkbox"/> w	50%	30%	10%	50%	30%	10%	50%	30%	10%	50%	30%	10%	50%	30%	10%	0
<input type="checkbox"/> fc	20%			20%			20%			20%			20%			0
RCR	RCR:Room Cavity Ratio						Wall Exitance Coefficients (WEC)									
0.0																
1.0	.349	.199	.063	.337	.192	.061	.314	.180	.057	.292	.169	.054	.272	.158	.051	
2.0	.313	.172	.053	.302	.166	.051	.281	.156	.049	.262	.147	.046	.244	.138	.043	
3.0	.283	.151	.045	.273	.146	.044	.254	.138	.042	.236	.130	.040	.220	.122	.038	
4.0	.258	.134	.039	.249	.130	.038	.231	.123	.037	.215	.116	.035	.200	.109	.033	
5.0	.236	.120	.035	.228	.117	.034	.212	.110	.032	.197	.104	.031	.184	.098	.029	
6.0	.217	.109	.031	.210	.106	.030	.195	.100	.029	.182	.095	.028	.169	.089	.026	
7.0	.201	.099	.028	.194	.097	.028	.181	.092	.026	.169	.087	.025	.157	.082	.024	
8.0	.187	.091	.026	.181	.089	.025	.169	.084	.024	.157	.080	.023	.147	.075	.022	
9.0	.175	.085	.024	.169	.082	.023	.158	.078	.022	.147	.074	.021	.138	.070	.020	
10.0	.164	.079	.022	.158	.077	.021	.148	.073	.020	.139	.069	.020	.129	.065	.019	

<input type="checkbox"/> cc	80%			70%			50%			30%			10%			0
<input type="checkbox"/> w	50%	30%	10%	50%	30%	10%	50%	30%	10%	50%	30%	10%	50%	30%	10%	0
<input type="checkbox"/> fc	20%			20%			20%			20%			20%			0
RCR	RCR:Room Cavity Ratio						Ceiling Cavity Exitance Coefficients (CCEC)									
0.0	.324	.324	.324	.277	.277	.277	.189	.189	.189	.108	.108	.108	.035	.035	.035	
1.0	.317	.290	.265	.271	.249	.228	.186	.171	.158	.107	.099	.092	.034	.032	.030	
2.0	.310	.267	.230	.266	.230	.199	.182	.159	.139	.105	.092	.081	.034	.030	.027	
3.0	.303	.250	.208	.260	.216	.181	.178	.150	.127	.103	.088	.075	.033	.028	.024	
4.0	.295	.238	.193	.253	.205	.168	.174	.143	.118	.101	.084	.070	.032	.027	.023	
5.0	.288	.228	.183	.247	.197	.159	.170	.138	.113	.099	.081	.067	.032	.026	.022	
6.0	.281	.220	.176	.241	.190	.153	.166	.133	.108	.097	.078	.064	.031	.026	.021	
7.0	.274	.213	.171	.236	.185	.149	.163	.130	.105	.095	.076	.063	.031	.025	.021	
8.0	.267	.208	.166	.230	.180	.145	.159	.126	.103	.093	.075	.061	.030	.024	.020	
9.0	.261	.203	.163	.225	.176	.142	.156	.124	.101	.091	.073	.060	.029	.024	.020	
10.0	.256	.199	.161	.220	.172	.140	.153	.121	.100	.089	.072	.059	.029	.024	.020	

C Range: 0 - 360DEG  
 C Interval: 22.5DEG  
 Test Speed: HIGH  
 Temperature:25.3DEG  
 Operators:admin  
 Test Date:2022-03-16

Range: 0 - 180DEG  
 Interval: 1.0DEG  
 Test System:EVERFINE GO-2000B\_V1 SYSTEM V2.00.411  
 Humidity:65.0%  
 Test Distance:8.780m [K=1.0000]  
 Remarks:

**UGR(Unified Glare Rating) Table**

Test:U:119.61V I:0.3838A P:41.376W PF:0.9005 Freq:0Hz Lamp Flux:2468.83x1 lm										
NAME: ADS lighting Corp					TYPE:			WEIGHT:		
SPEC.:ASD-LFC-AF-20D42-AC					DIM.:			SERIAL No.:		
MFR.: ADS lighting Corp					SUR.:0.485*0.485			Shielding Angle:		
ceiling/cavity	0.7	0.7	0.5	0.5	0.3	0.7	0.7	0.5	0.5	0.3
walls	0.5	0.3	0.5	0.3	0.3	0.5	0.3	0.5	0.3	0.3
working plane	0.2	0.2	0.2	0.2	0.2	0.2	0.2	0.2	0.2	0.2
Room dimensions	Viewed crosswise					Viewed endwise				
x = 2H y = 2H	11.5	12.8	12.0	13.3	13.9	11.4	12.8	11.9	13.3	13.8
3H	13.4	14.6	13.9	15.2	15.8	13.3	14.6	13.9	15.1	15.7
4H	14.3	15.5	14.9	16.0	16.6	14.2	15.4	14.8	15.9	16.5
6H	15.1	16.2	15.7	16.8	17.4	15.0	16.1	15.6	16.7	17.3
8H	15.5	16.6	16.1	17.1	17.8	15.4	16.5	16.0	17.0	17.7
12H	15.9	16.9	16.5	17.5	18.2	15.8	16.9	16.4	17.4	18.1
4H 2H	12.1	13.3	12.7	13.8	14.5	12.1	13.3	12.6	13.8	14.4
3H	14.3	15.3	14.8	15.9	16.5	14.2	15.2	14.8	15.8	16.5
4H	15.3	16.2	15.9	16.8	17.5	15.2	16.1	15.8	16.8	17.4
6H	16.2	17.1	16.9	17.7	18.4	16.2	17.0	16.8	17.6	18.4
8H	16.7	17.5	17.4	18.2	18.9	16.6	17.4	17.3	18.1	18.8
12H	17.3	18.0	17.9	18.6	19.4	17.2	17.9	17.8	18.6	19.3
8H 4H	15.6	16.4	16.3	17.1	17.8	15.6	16.3	16.2	17.0	17.7
6H	16.8	17.5	17.5	18.2	18.9	16.8	17.4	17.4	18.1	18.9
8H	17.5	18.0	18.2	18.7	19.5	17.4	18.0	18.1	18.7	19.5
12H	18.2	18.7	18.9	19.4	20.2	18.1	18.6	18.8	19.3	20.2
12H 4H	15.7	16.4	16.3	17.1	17.8	15.6	16.3	16.3	17.0	17.8
6H	16.9	17.5	17.6	18.2	19.0	16.9	17.5	17.6	18.2	19.0
8H	17.7	18.2	18.4	18.9	19.7	17.6	18.1	18.3	18.8	19.6
Variations with the observer position at spacings:										
S = 1.0H	+ 0.1 / - 0.1					+ 0.1 / - 0.1				
1.5H	+ 0.2 / - 0.3					+ 0.2 / - 0.3				
2.0H	+ 0.2 / - 0.4					+ 0.1 / - 0.3				

CIE Pub.117, 2469 lm Total Lamp Luminous Flux Corrected (8log(F/F0) = 3.1)  
 Area: 0.7389 m2

C Range: 0 - 360DEG  
 C Interval: 22.5DEG  
 Test Speed: HIGH  
 Temperature:25.3DEG  
 Operators:admin  
 Test Date:2022-03-16

Range: 0 - 180DEG  
 Interval: 1.0DEG  
 Test System:EVERFINE GO-2000B\_V1 SYSTEM V2.00.411  
 Humidity:65.0%  
 Test Distance:8.780m [K=1.0000]  
 Remarks:

**UTILIZATION FACTORS TABLE**

Test:U:119.61V I:0.3838A P:41.376W PF:0.9005 Freq:0Hz Lamp Flux:2468.83x1 lm		
NAME: ADS lighting Corp	TYPE:	WEIGHT:
SPEC.:ASD-LFC-AF-20D42-AC	DIM.:	SERIAL No.:
MFR.: ADS lighting Corp	SUR.:0.485*0.485	Shielding Angle:

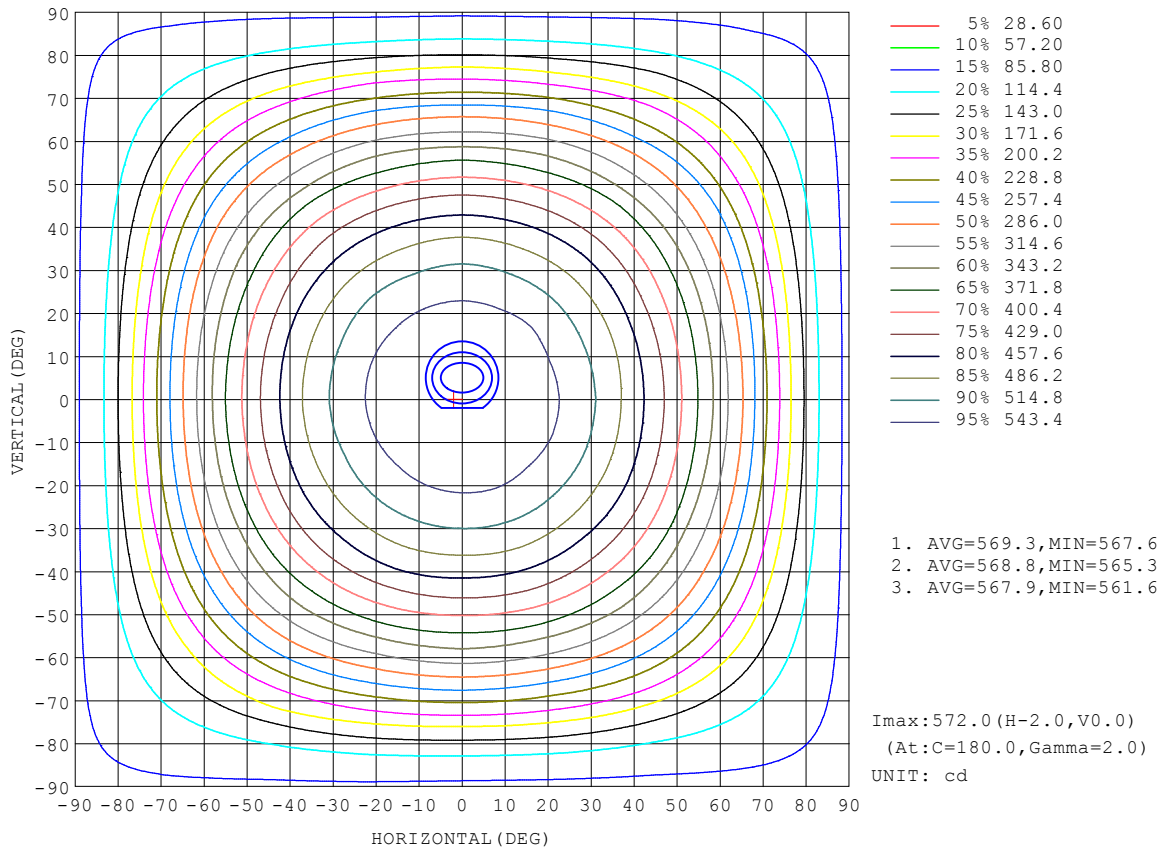
REFLECTANCE										
Ceiling	0.8	0.8	0.8	0.7	0.7	0.7	0.5	0.5	0.5	0
Walls	0.7	0.5	0.3	0.7	0.5	0.3	0.7	0.5	0.3	0
Working plane	0.2	0.2	0.2	0.2	0.2	0.2	0.2	0.2	0.2	0
ROOM INDEX	UTILIZATION FACTORS (PERCENT) $k(RI) \times RCR = 5$									
k = 0.60	49	37	30	48	37	30	46	36	29	22
0.80	59	46	38	57	45	38	54	44	37	29
1.00	67	54	46	65	53	46	61	54	44	36
1.25	74	62	54	71	60	53	67	58	51	41
1.50	79	68	59	76	66	58	71	63	56	46
2.00	86	76	68	83	74	67	77	70	64	52
2.50	91	81	74	87	79	72	81	74	69	56
3.00	94	86	79	91	83	77	84	78	73	60
4.00	99	92	86	95	89	83	88	83	78	64
5.00	102	96	90	98	92	87	90	86	82	67
ROOM INDEX	UF(total)									Direct
According to DIN EN 13032-2 2004			Suspended				SHRNOM = 1.25			

C Range: 0 - 360DEG  
 C Interval: 22.5DEG  
 Test Speed: HIGH  
 Temperature:25.3DEG  
 Operators:admin  
 Test Date:2022-03-16

Range: 0 - 180DEG  
 Interval: 1.0DEG  
 Test System:EVERFINE GO-2000B\_V1 SYSTEM V2.00.411  
 Humidity:65.0%  
 Test Distance:8.780m [K=1.0000]  
 Remarks:

**ISOCANDELA DIAGRAM**

Test:U:119.61V I:0.3838A P:41.376W PF:0.9005 Freq:0Hz Lamp Flux:2468.83x1 lm		
NAME: ADS lighting Corp	TYPE:	WEIGHT:
SPEC.:ASD-LFC-AF-20D42-AC	DIM.:	SERIAL No.:
MFR.: ADS lighting Corp	SUR.:0.485*0.485	Shielding Angle:



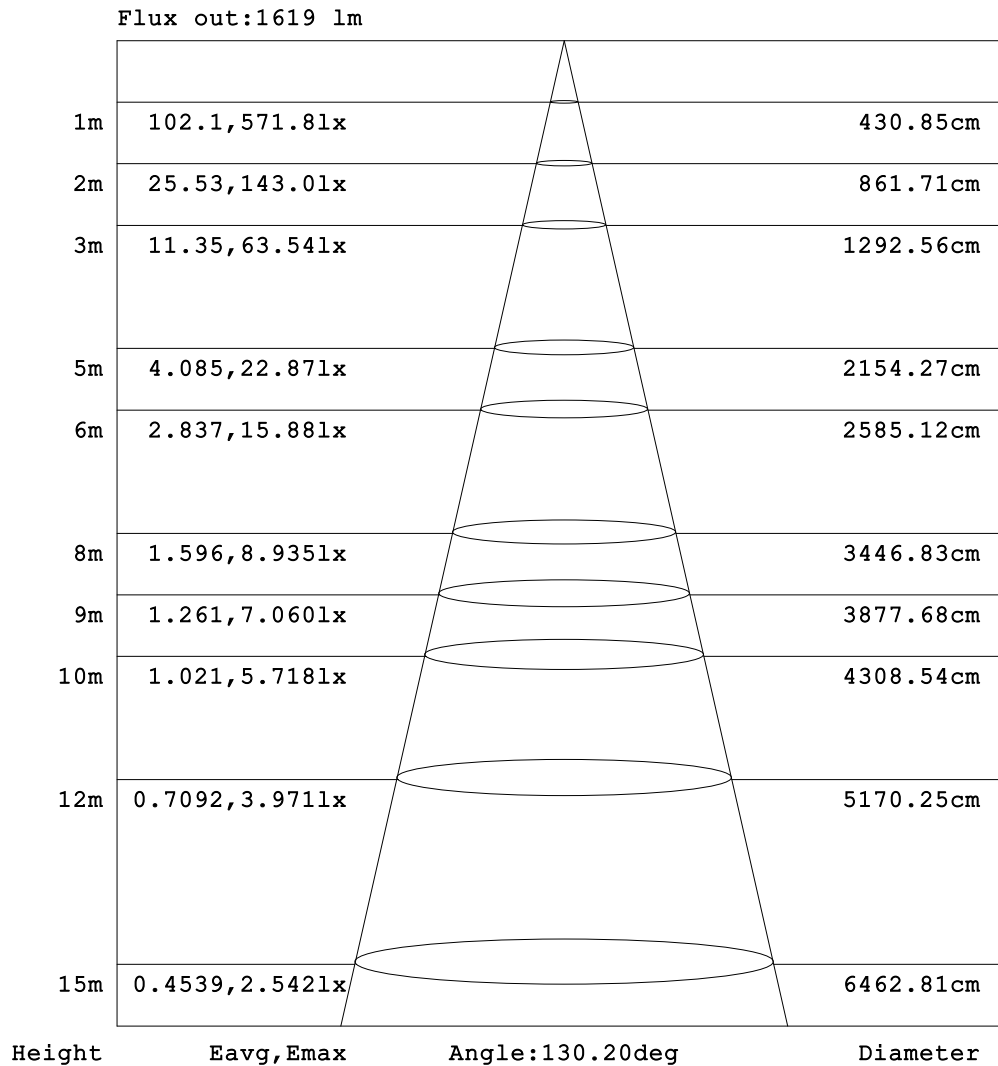
C Range: 0 - 360DEG  
 C Interval: 22.5DEG  
 Test Speed: HIGH  
 Temperature:25.3DEG  
 Operators:admin  
 Test Date:2022-03-16

□ Range: 0 - 180DEG  
 □ Interval: 1.0DEG  
 Test System:EVERFINE GO-2000B\_V1 SYSTEM V2.00.411  
 Humidity:65.0%  
 Test Distance:8.780m [K=1.0000]  
 Remarks:



**AAI Figure**

Test:U:119.61V I:0.3838A P:41.376W PF:0.9005 Freq:0Hz Lamp Flux:2468.83x1 lm		
NAME: ADS lighting Corp	TYPE:	WEIGHT:
SPEC.:ASD-LFC-AF-20D42-AC	DIM.:	SERIAL No.:
MFR.: ADS lighting Corp	SUR.:0.485*0.485	Shielding Angle:



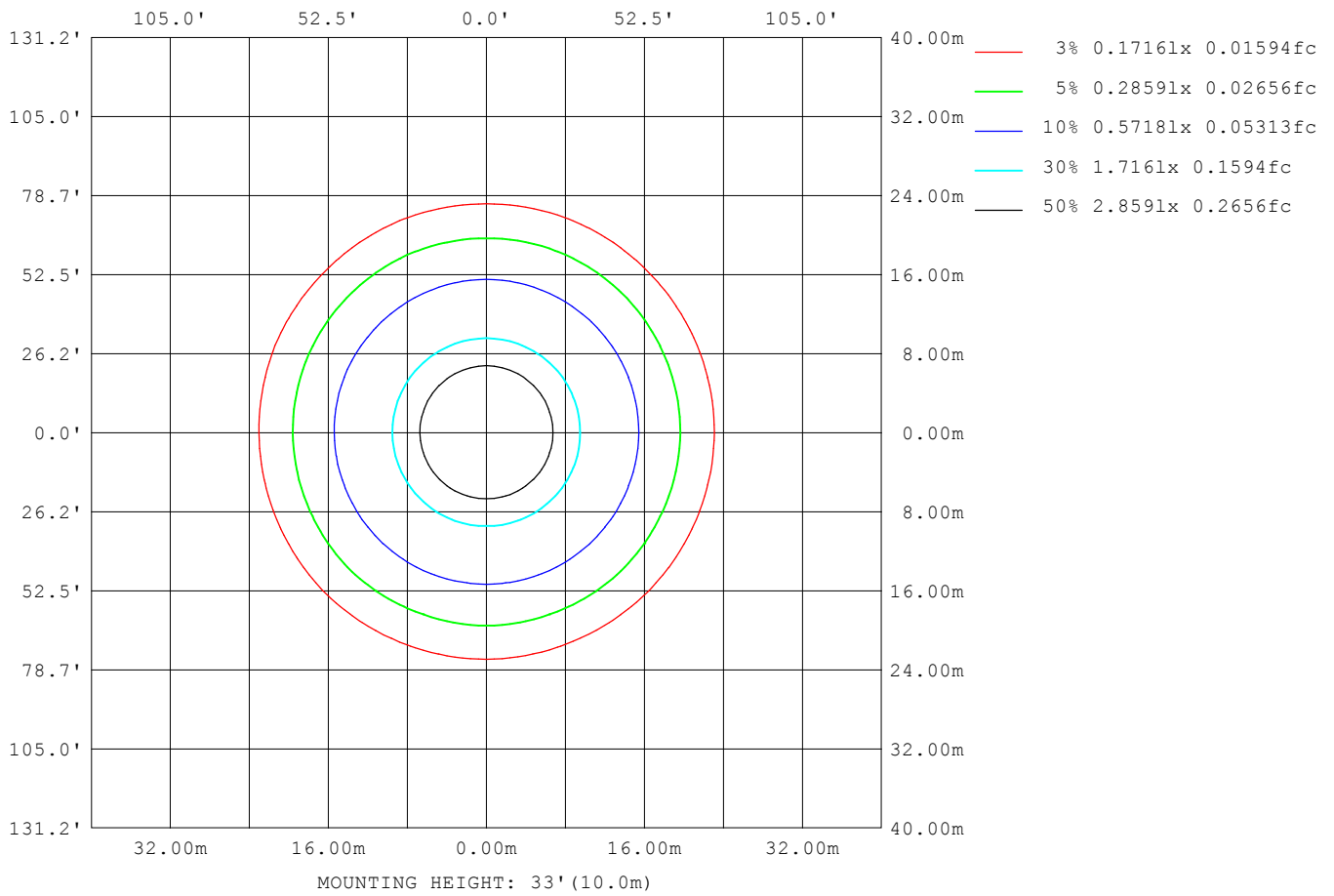
Note:The Curves indicate the illuminated area and the average illumination when the luminaire is at different distance.

C Range: 0 - 360DEG  
 C Interval: 22.5DEG  
 Test Speed: HIGH  
 Temperature:25.3DEG  
 Operators:admin  
 Test Date:2022-03-16

Range: 0 - 180DEG  
 Interval: 1.0DEG  
 Test System:EVERFINE GO-2000B\_V1 SYSTEM V2.00.411  
 Humidity:65.0%  
 Test Distance:8.780m [K=1.0000]  
 Remarks:

**ISOLUX DIAGRAM**

Test:U:119.61V I:0.3838A P:41.376W PF:0.9005 Freq:0Hz Lamp Flux:2468.83x1 lm		
NAME: ADS lighting Corp	TYPE:	WEIGHT:
SPEC.:ASD-LFC-AF-20D42-AC	DIM.:	SERIAL No.:
MFR.: ADS lighting Corp	SUR.:0.485*0.485	Shielding Angle:



C Range: 0 - 360DEG  
 C Interval: 22.5DEG  
 Test Speed: HIGH  
 Temperature:25.3DEG  
 Operators:admin  
 Test Date:2022-03-16

Range: 0 - 180DEG  
 Interval: 1.0DEG  
 Test System:EVERFINE GO-2000B\_V1 SYSTEM V2.00.411  
 Humidity:65.0%  
 Test Distance:8.780m [K=1.0000]  
 Remarks:

**LED Avg.L Report**

Test:U:119.61V I:0.3838A P:41.376W PF:0.9005 Freq:0Hz Lamp Flux:2468.83x1 lm		
NAME: ADS lighting Corp	TYPE:	WEIGHT:
SPEC.:ASD-LFC-AF-20D42-AC	DIM.:	SERIAL No.:
MFR.: ADS lighting Corp	SUR.:0.485*0.485	Shielding Angle:

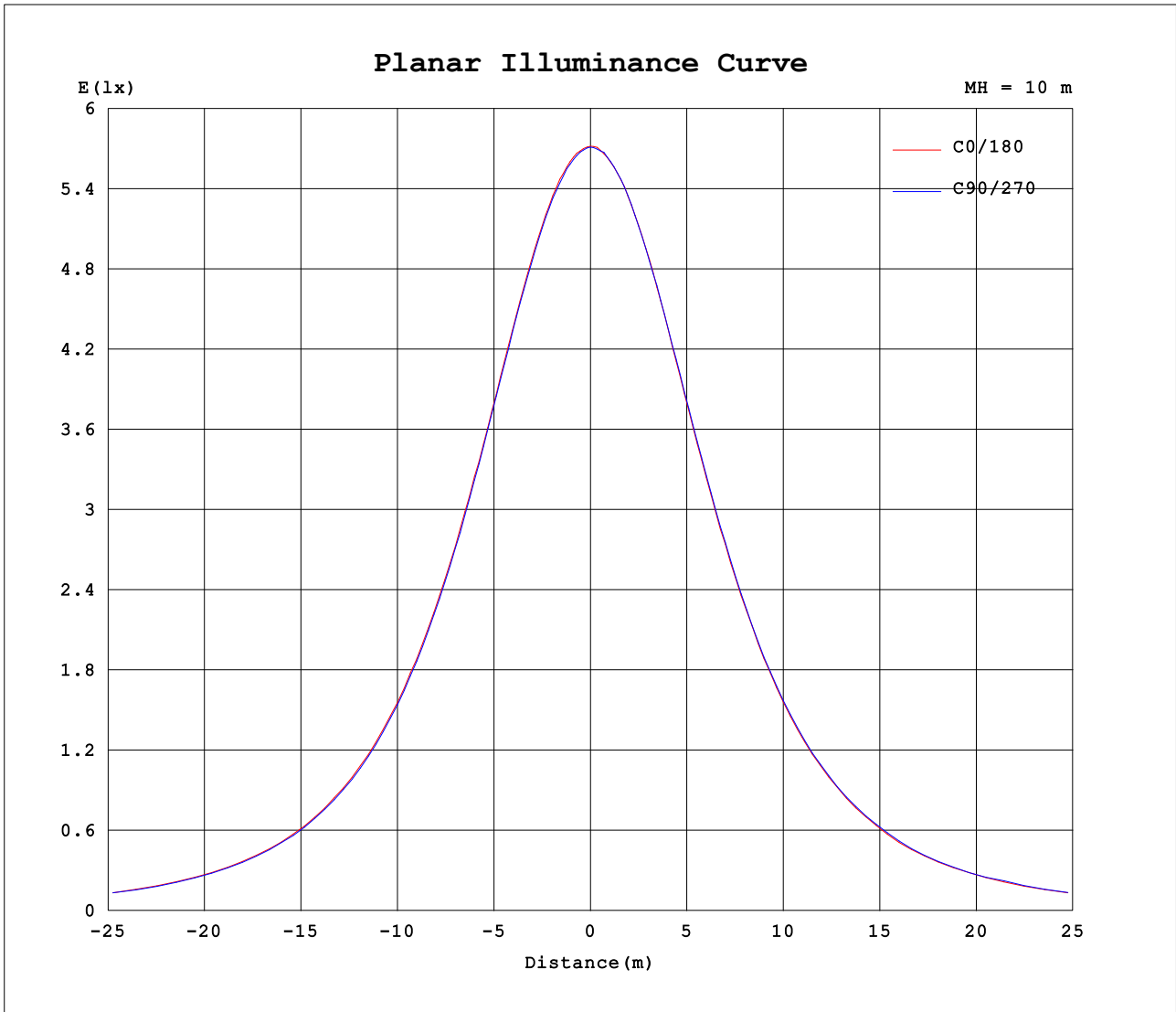
AvgL	cd/m2
L_0~180 (65) av	919
L_0~180 (75) av	986
L_0~180 (85) av	1591
L_90~270 (65) av	925
L_90~270 (75) av	994
L_90~270 (85) av	1611
L_45 (65) av	917
L_45 (75) av	984
L_45 (85) av	1594

Standard: GB/T 29293-2012

C Range: 0 - 360DEG  
 C Interval: 22.5DEG  
 Test Speed: HIGH  
 Temperature:25.3DEG  
 Operators:admin  
 Test Date:2022-03-16

Range: 0 - 180DEG  
 Interval: 1.0DEG  
 Test System:EVERFINE GO-2000B\_V1 SYSTEM V2.00.411  
 Humidity:65.0%  
 Test Distance:8.780m [K=1.0000]  
 Remarks:

Planar Illuminance Curve



C Range: 0 - 360DEG  
C Interval: 22.5DEG  
Test Speed: HIGH  
Temperature:25.3DEG  
Operators:admin  
Test Date:2022-03-16

Range: 0 - 180DEG  
 Interval: 1.0DEG  
Test System:EVERFINE GO-2000B\_V1 SYSTEM V2.00.411  
Humidity:65.0%  
Test Distance:8.780m [K=1.0000]  
Remarks:

LUMINOUS DISTRIBUTION INTENSITY DATA

Test:U:119.61V I:0.3838A P:41.376W PF:0.9005 Freq:0Hz Lamp Flux:2468.83x1 lm		
NAME: ADS lighting Corp	TYPE:	WEIGHT:
SPEC.:ASD-LFC-AF-20D42-AC	DIM.:	SERIAL No.:
MFR.: ADS lighting Corp	SUR.:0.485*0.485	Shielding Angle:

Table--1

UNIT: cd

C (DEG) □ (DEG)	0	22.5	45	67.5	90	112.5	135	157.5	180	202.5	225	247.5	270	292.5	315	337.5			
0	572	571	570	571	571	570	570	570	572	571	570	571	571	570	570	570			
5	570	570	569	569	569	569	568	567	570	569	569	569	570	569	569	570			
10	566	566	566	565	564	565	565	564	567	567	567	566	567	566	566	566			
15	560	559	559	558	557	558	558	558	560	560	560	560	560	560	559	559			
20	550	550	548	549	548	548	547	548	550	551	550	550	550	550	550	549			
25	537	536	534	535	533	533	533	533	536	536	537	537	538	537	537	536			
30	518	518	517	516	515	515	515	515	519	518	521	519	521	519	519	518			
35	496	496	494	494	494	493	494	494	499	498	498	497	501	497	497	496			
40	471	471	467	468	467	468	467	469	473	472	473	473	474	473	472	470			
45	441	442	437	439	436	438	437	439	442	442	443	444	445	443	444	442			
50	408	408	404	404	402	403	404	406	409	409	411	410	412	410	410	408			
55	370	370	366	368	366	367	367	369	372	371	375	373	375	374	375	371			
60	331	326	327	324	327	324	327	325	328	332	329	333	332	335	331	331			
65	289	284	283	280	281	281	283	283	285	289	288	292	296	290	290	287			
70	239	236	234	231	234	233	235	237	239	239	241	242	242	243	241	239			
75	189	186	184	185	186	185	186	186	188	191	191	197	194	192	192	188			
80	138	139	135	136	136	137	139	141	143	142	143	143	144	143	144	140			
85	101	101	99.6	101	101	102	102	103	104	104	105	104	106	105	104	102			
90	81.1	81.1	81.0	82.1	82.8	83.6	83.2	83.4	83.2	82.5	82.7	82.3	83.1	82.5	82.2	80.6			
95	79.3	79.5	80.0	81.2	82.0	82.3	82.0	81.5	81.0	80.1	79.2	78.8	78.9	78.7	78.7	78.3			
100	80.1	79.9	79.7	80.9	81.8	82.1	81.7	81.8	81.6	80.6	78.3	78.7	79.0	78.7	78.4	78.8			
105	80.4	79.8	79.2	80.1	80.8	81.1	80.8	81.6	81.7	80.4	77.3	78.1	78.2	78.1	77.8	78.9			
110	80.2	78.6	77.9	79.0	79.6	79.9	79.2	80.1	81.4	79.1	76.4	77.0	77.1	77.1	77.0	78.0			
115	76.4	74.8	76.2	77.3	78.5	78.2	77.5	76.0	77.0	75.0	75.1	75.3	76.1	75.5	76.0	74.8			
120	71.8	70.4	73.8	74.8	76.2	75.6	75.3	71.7	71.8	70.7	73.5	73.0	74.2	73.4	73.9	70.9			
125	70.5	67.0	70.2	71.5	73.3	71.8	71.6	68.5	70.3	67.5	70.8	70.2	71.6	70.8	71.3	67.5			
130	68.5	64.4	64.6	67.9	70.2	67.6	66.3	65.6	68.3	64.7	65.7	67.2	68.8	67.8	66.3	64.5			
135	66.0	61.5	59.5	63.0	66.7	62.5	61.8	62.4	66.1	61.4	61.0	63.5	66.1	64.0	61.7	61.3			
140	62.5	57.2	55.9	56.2	61.2	55.7	57.8	59.0	63.1	58.1	57.5	57.5	62.4	58.6	57.8	58.0			
145	58.5	54.2	52.6	51.0	55.6	52.1	53.6	56.0	58.8	54.6	53.6	51.8	57.8	53.1	54.4	55.2			
150	54.1	51.4	49.2	48.8	51.6	49.3	50.5	52.4	54.3	51.5	50.6	49.3	52.5	50.2	50.5	52.1			
155	49.9	47.8	45.6	45.4	46.8	45.9	46.9	48.8	50.0	48.3	46.9	46.5	47.9	46.8	47.4	49.2			
160	45.8	44.8	42.2	41.6	42.7	43.5	43.1	44.4	46.1	43.5	43.6	44.2	43.7	42.9	44.2	45.8			
165	42.3	41.5	39.5	38.6	40.1	40.1	39.9	40.8	42.7	40.1	40.2	41.2	40.9	38.7	40.1	41.7			
170	41.8	42.4	41.4	38.4	40.1	41.5	42.0	40.2	41.1	40.2	42.3	41.8	40.0	38.5	40.5	41.3			
175	41.5	41.2	38.9	38.9	41.8	42.1	39.4	39.5	41.4	39.0	39.4	41.9	41.4	38.8	39.2	41.4			
180	42.1	40.0	39.9	40.8	43.1	40.6	39.9	39.9	42.1	39.9	39.9	40.7	43.1	40.6	39.9	39.9			

C Range: 0 - 360DEG  
 C Interval: 22.5DEG  
 Test Speed: HIGH  
 Temperature:25.3DEG  
 Operators:admin  
 Test Date:2022-03-16

□ Range: 0 - 180DEG  
 □ Interval: 1.0DEG  
 Test System:EVERFINE GO-2000B\_V1 SYSTEM V2.00.411  
 Humidity:65.0%  
 Test Distance:8.780m [K=1.0000]  
 Remarks: