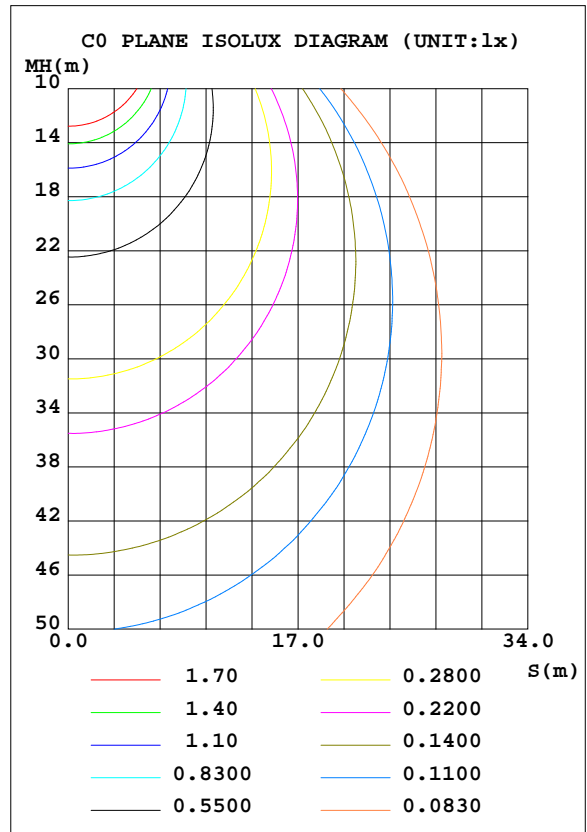
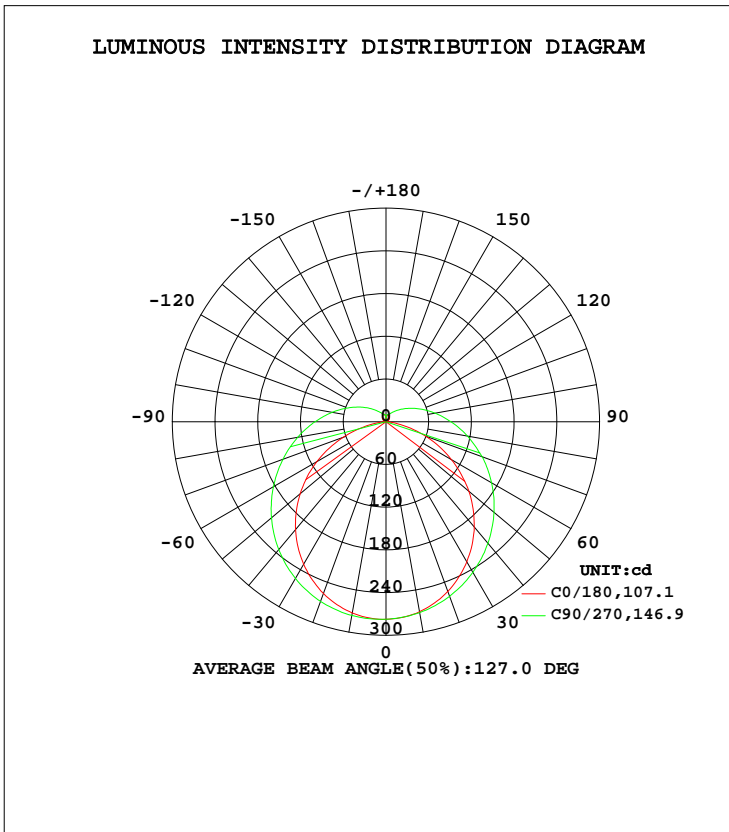


LUMINAIRE PHOTOMETRIC TEST REPORT

| | | |
|---|-----------|---------------------|
| Test:U:120.1V I:0.1330A P:15.30W PF:0.9579 Lamp Flux:1105.22x1 lm | | |
| NAME: LED Luminaires | TYPE:N/A | WEIGHT:N/A |
| SPEC.:N/A | DIM.: N/A | SERIAL No.:N/A |
| MFR.: RISING-SUN | SUR.:N/A | Shielding Angle:N/A |

| DATA OF LAMP | | PHOTOMETRIC DATA Eff: 72.24 lm/W | | | |
|------------------|-------------------|----------------------------------|---------|--------------------|----------|
| MODEL | PSZ2S221111001-10 | I _{max} (cd) | 277.9 | S/MH(C0/180) | 1.22 |
| NOMINAL POWER(W) | | LOR(%) | 100.0 | S/MH(C90/270) | 1.31 |
| RATED VOLTAGE(V) | 120 | TOTAL FLUX(lm) | 1105.2 | η UP, DN(C0-180) | 7.2,44.1 |
| NOMINAL FLUX(lm) | 1105.22 | CIE CLASS | SEMI-D. | η UP, DN(C180-360) | 6.7,42.0 |
| LAMPS INSIDE | 1 | η up(%) | 13.9 | CIBSE SHR NOM | 1.50 |
| TEST VOLTAGE(V) | 120 | η down(%) | 86.1 | CIBSE SHR MAX | 1.50 |



C Range: 0 - 360DEG
 C Interval: 22.5DEG
 Test Speed: HIGH
 Temperature:24.3DEG
 Operators:Carl
 Test Date:2022-12-09

γ Range: 0 - 180DEG
 γ Interval: 1.0DEG
 Test System:EVERFINE GO-R5000_V2 SYSTEM V2.0.351
 Humidity:48%
 Test Distance:2.532m [K=1.0000]
 Remarks:

ZONAL FLUX DIAGRAM

ZONAL FLUX DIAGRAM:

| γ | C0 | C45 | C90 | C135 | C180 | C225 | C270 | C315 | γ | Φ zone | Φ total | %lum,lamp |
|-----|-----------------------|-------|-------|-------|--------|-------|-------|-------|---------|---------|---------|-----------|
| 10 | 272.7 | 274.5 | 276.3 | 274.2 | 271.0 | 270.9 | 272.4 | 271.8 | 0- 10 | 26.27 | 26.27 | 2.38,2.38 |
| 20 | 256.7 | 263.1 | 268.6 | 261.9 | 253.7 | 256.0 | 261.1 | 257.5 | 10- 20 | 75.51 | 101.8 | 9.21,9.21 |
| 30 | 231.2 | 243.8 | 254.1 | 241.8 | 227.1 | 234.1 | 244.2 | 236.3 | 20- 30 | 115.4 | 217.2 | 19.7,19.7 |
| 40 | 197.6 | 217.2 | 234.3 | 215.2 | 192.7 | 206.0 | 222.8 | 208.8 | 30- 40 | 141.6 | 358.8 | 32.5,32.5 |
| 50 | 157.4 | 185.7 | 209.9 | 183.9 | 152.2 | 174.5 | 198.2 | 177.4 | 40- 50 | 151.6 | 510.4 | 46.2,46.2 |
| 60 | 112.2 | 151.9 | 182.6 | 150.2 | 106.1 | 140.8 | 171.3 | 143.8 | 50- 60 | 145.5 | 656.0 | 59.4,59.4 |
| 70 | 63.92 | 118.1 | 154.0 | 116.9 | 58.89 | 108.1 | 143.6 | 110.5 | 60- 70 | 126.0 | 782.0 | 70.8,70.8 |
| 80 | 20.22 | 87.22 | 126.0 | 86.78 | 16.86 | 79.10 | 116.2 | 81.06 | 70- 80 | 98.41 | 880.4 | 79.7,79.7 |
| 90 | 0.0914 | 61.51 | 99.67 | 61.71 | 0.0508 | 55.58 | 91.37 | 56.86 | 80- 90 | 70.74 | 951.1 | 86.1,86.1 |
| 100 | 0.5730 | 42.68 | 76.94 | 43.23 | 0.6662 | 38.67 | 70.06 | 39.40 | 90-100 | 50.05 | 1001 | 90.6,90.6 |
| 110 | 2.286 | 29.64 | 57.09 | 30.27 | 2.363 | 27.17 | 52.21 | 27.49 | 100-110 | 35.17 | 1036 | 93.8,93.8 |
| 120 | 4.250 | 21.07 | 41.37 | 21.66 | 4.220 | 19.82 | 38.04 | 19.95 | 110-120 | 24.37 | 1061 | 96,96 |
| 130 | 6.226 | 15.80 | 29.24 | 16.18 | 6.077 | 15.10 | 27.31 | 15.34 | 120-130 | 16.70 | 1077 | 97.5,97.5 |
| 140 | 8.124 | 12.62 | 20.44 | 12.89 | 7.787 | 12.00 | 19.44 | 12.94 | 130-140 | 11.34 | 1089 | 98.5,98.5 |
| 150 | 9.636 | 10.89 | 14.84 | 11.14 | 9.317 | 10.21 | 14.21 | 11.58 | 140-150 | 7.660 | 1096 | 99.2,99.2 |
| 160 | 10.83 | 10.42 | 11.66 | 10.28 | 10.02 | 9.629 | 11.23 | 10.78 | 150-160 | 5.065 | 1101 | 99.7,99.7 |
| 170 | 9.810 | 9.685 | 10.72 | 10.05 | 8.040 | 9.372 | 10.14 | 10.17 | 160-170 | 2.954 | 1104 | 99.9,99.9 |
| 180 | 4.444 | 3.067 | 6.234 | 3.079 | 4.801 | 4.164 | 2.552 | 2.538 | 170-180 | 0.7764 | 1105 | 100,100 |
| DEG | LUMINOUS INTENSITY:cd | | | | | | | | | UNIT:lm | | |

Conical surface Flux(90deg): 434.39 lm

%lum = 39.3%
%lamp = 39.3%

Conical surface Flux(120deg): 655.96 lm

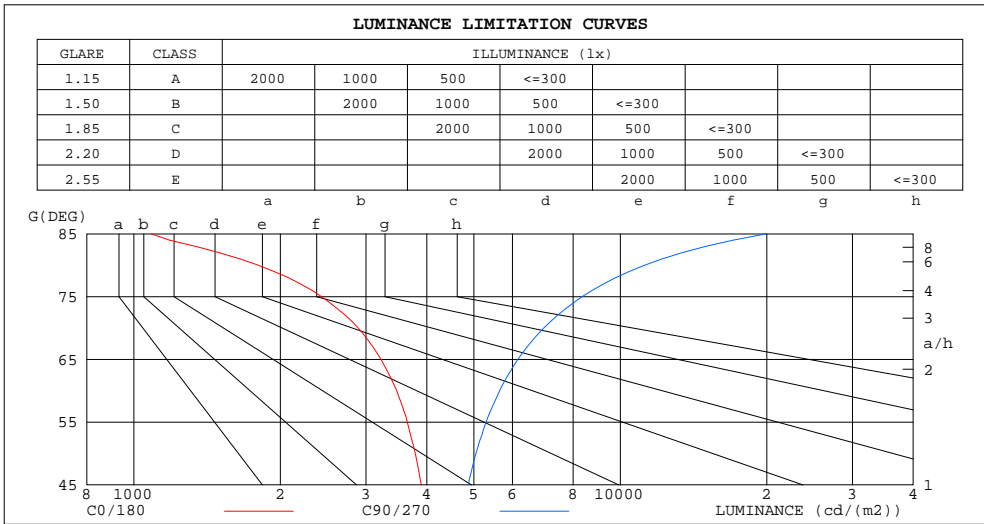
%lum = 59.4%
%lamp = 59.4%

C Range: 0 - 360DEG
C Interval: 22.5DEG
Test Speed: HIGH
Temperature:24.3DEG
Operators:Carl
Test Date:2022-12-09

γ Range: 0 - 180DEG
γ Interval: 1.0DEG
Test System:EVERFINE GO-R5000_V2 SYSTEM V2.0.351
Humidity:48%
Test Distance:2.532m [K=1.0000]
Remarks:

LUMINANCE LIMITATION CURVES

| | | |
|---|-----------|---------------------|
| Test:U:120.1V I:0.1330A P:15.30W PF:0.9579 Lamp Flux:1105.22x1 lm | | |
| NAME: LED Luminaires | TYPE:N/A | WEIGHT:N/A |
| SPEC.:N/A | DIM.: N/A | SERIAL No.:N/A |
| MFR.: RISING-SUN | SUR.:N/A | Shielding Angle:N/A |



| LUMINANCE cd/(m2) | | |
|-------------------|--------|---------|
| G (DEG) | C0/180 | C90/270 |
| 85 | 1086 | 19953 |
| 80 | 1801 | 11219 |
| 75 | 2430 | 8352 |
| 70 | 2891 | 6961 |
| 65 | 3221 | 6160 |
| 60 | 3470 | 5647 |
| 55 | 3649 | 5297 |
| 50 | 3787 | 5050 |
| 45 | 3899 | 4866 |

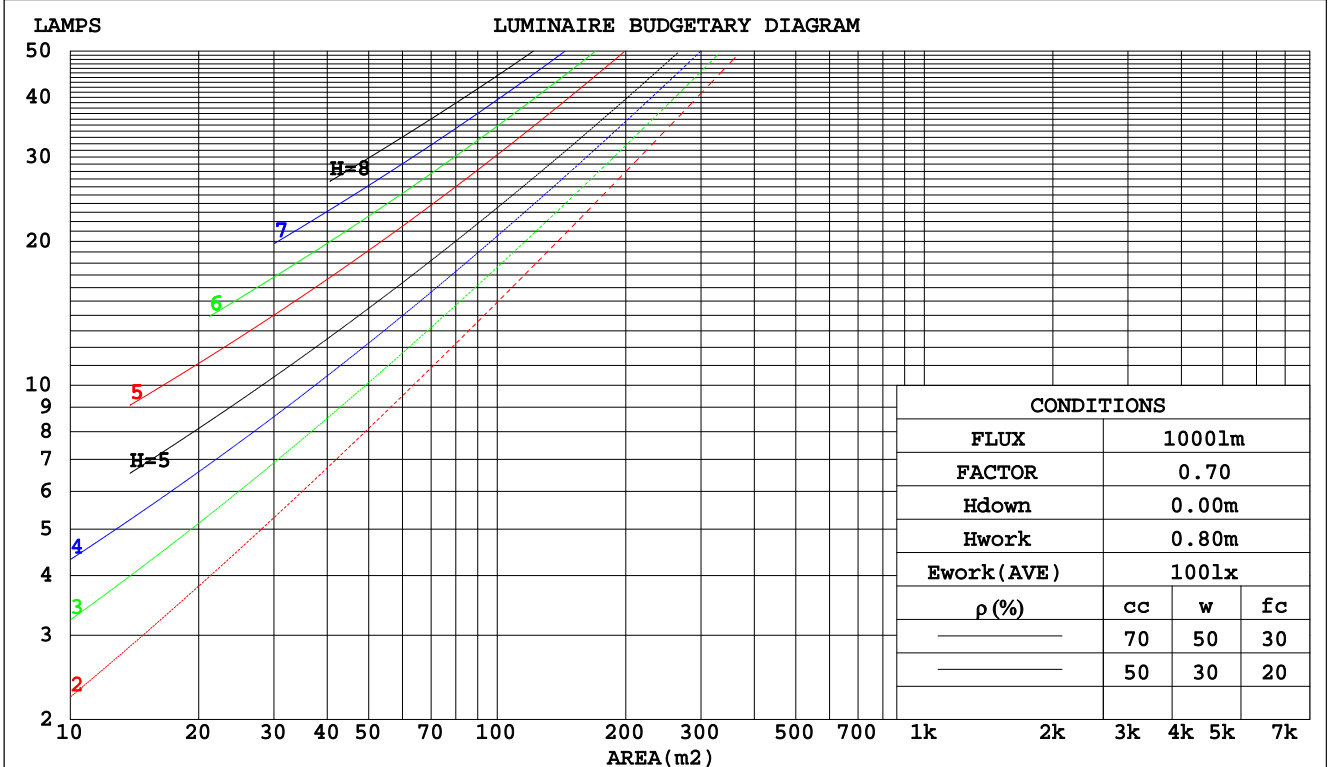
C Range: 0 - 360DEG
 C Interval: 22.5DEG
 Test Speed: HIGH
 Temperature: 24.3DEG
 Operators: Carl
 Test Date: 2022-12-09

γ Range: 0 - 180DEG
 γ Interval: 1.0DEG
 Test System: EVERFINE GO-R5000_V2 SYSTEM V2.0.351
 Humidity: 48%
 Test Distance: 2.532m [K=1.0000]
 Remarks:

CU AND LUMINAIRE BUDGETARY ESTIMATE DIAGRAM

| | | |
|---|-----------|---------------------|
| Test:U:120.1V I:0.1330A P:15.30W PF:0.9579 Lamp Flux:1105.22x1 lm | | |
| NAME: LED Luminaires | TYPE:N/A | WEIGHT:N/A |
| SPEC.:N/A | DIM.: N/A | SERIAL No.:N/A |
| MFR.: RISING-SUN | SUR.:N/A | Shielding Angle:N/A |

| pcc | 80% | | | 70% | | | 50% | | | 30% | | | 10% | | | 0 |
|------|--|------|------|------|------|------|------|------|------|-----|-----|-----|-----|-----|-----|-----|
| | 50% | 30% | 10% | 50% | 30% | 10% | 50% | 30% | 10% | 50% | 30% | 10% | 50% | 30% | 10% | 0 |
| pw | | | | | | | | | | | | | | | | 0 |
| pfc | 20% | | | 20% | | | 20% | | | 20% | | | 20% | | | 0 |
| RCR | RCR:Room Cavity Ratio Coefficients of Utilization(CU) | | | | | | | | | | | | | | | |
| 0.0 | 1.16 | 1.16 | 1.16 | 1.11 | 1.11 | 1.11 | 1.03 | 1.03 | 1.03 | .96 | .96 | .96 | .89 | .89 | .89 | .86 |
| 1.0 | .97 | .92 | .88 | .94 | .89 | .85 | .87 | .83 | .80 | .81 | .78 | .75 | .75 | .72 | .70 | .67 |
| 2.0 | .84 | .76 | .70 | .81 | .74 | .68 | .75 | .69 | .64 | .69 | .65 | .60 | .64 | .60 | .57 | .54 |
| 3.0 | .73 | .64 | .57 | .70 | .62 | .56 | .65 | .58 | .53 | .60 | .55 | .50 | .56 | .51 | .47 | .45 |
| 4.0 | .64 | .55 | .48 | .62 | .53 | .47 | .57 | .50 | .44 | .53 | .47 | .42 | .50 | .45 | .40 | .38 |
| 5.0 | .57 | .48 | .41 | .55 | .46 | .40 | .51 | .44 | .38 | .48 | .41 | .36 | .45 | .39 | .35 | .32 |
| 6.0 | .51 | .42 | .35 | .49 | .41 | .34 | .46 | .39 | .33 | .43 | .37 | .32 | .40 | .35 | .30 | .28 |
| 7.0 | .46 | .37 | .31 | .45 | .36 | .30 | .42 | .34 | .29 | .39 | .33 | .28 | .37 | .31 | .27 | .25 |
| 8.0 | .42 | .33 | .27 | .41 | .33 | .27 | .38 | .31 | .26 | .36 | .30 | .25 | .34 | .28 | .24 | .22 |
| 9.0 | .38 | .30 | .24 | .37 | .29 | .24 | .35 | .28 | .23 | .33 | .27 | .22 | .31 | .26 | .21 | .19 |
| 10.0 | .35 | .27 | .22 | .34 | .27 | .22 | .32 | .26 | .21 | .31 | .24 | .20 | .29 | .23 | .19 | .18 |



C Range: 0 - 360DEG
 C Interval: 22.5DEG
 Test Speed: HIGH
 Temperature: 24.3DEG
 Operators: Carl
 Test Date: 2022-12-09

γ Range: 0 - 180DEG
 γ Interval: 1.0DEG
 Test System: EVERFINE GO-R5000_V2 SYSTEM V2.0.351
 Humidity: 48%
 Test Distance: 2.532m [K=1.0000]
 Remarks:

WEC AND CCEC

| | | |
|---|-----------|---------------------|
| Test:U:120.1V I:0.1330A P:15.30W PF:0.9579 Lamp Flux:1105.22x1 lm | | |
| NAME: LED Luminaires | TYPE:N/A | WEIGHT:N/A |
| SPEC.:N/A | DIM.: N/A | SERIAL No.:N/A |
| MFR.: RISING-SUN | SUR.:N/A | Shielding Angle:N/A |

| ρcc | 80% | | | 70% | | | 50% | | | 30% | | | 10% | | | 0 |
|------|-----------------------|------|------|------|------|------|---------------------------------|------|------|------|------|------|------|------|------|---|
| ρw | 50% | 30% | 10% | 50% | 30% | 10% | 50% | 30% | 10% | 50% | 30% | 10% | 50% | 30% | 10% | 0 |
| ρfc | 20% | | | 20% | | | 20% | | | 20% | | | 20% | | | 0 |
| RCR | RCR:Room Cavity Ratio | | | | | | Wall Exitance Coefficients(WEC) | | | | | | | | | |
| 0.0 | | | | | | | | | | | | | | | | |
| 1.0 | .369 | .210 | .067 | .358 | .204 | .065 | .336 | .193 | .062 | .317 | .183 | .059 | .299 | .173 | .056 | |
| 2.0 | .324 | .178 | .055 | .314 | .173 | .053 | .295 | .164 | .051 | .277 | .155 | .049 | .260 | .147 | .046 | |
| 3.0 | .290 | .154 | .046 | .281 | .150 | .045 | .263 | .143 | .043 | .247 | .136 | .042 | .232 | .129 | .040 | |
| 4.0 | .262 | .136 | .040 | .254 | .133 | .039 | .238 | .126 | .038 | .224 | .120 | .036 | .210 | .114 | .035 | |
| 5.0 | .239 | .122 | .035 | .232 | .119 | .035 | .218 | .113 | .033 | .204 | .108 | .032 | .192 | .103 | .031 | |
| 6.0 | .220 | .110 | .032 | .213 | .108 | .031 | .200 | .103 | .030 | .188 | .098 | .029 | .177 | .093 | .028 | |
| 7.0 | .203 | .100 | .028 | .197 | .098 | .028 | .185 | .094 | .027 | .174 | .089 | .026 | .164 | .085 | .025 | |
| 8.0 | .189 | .092 | .026 | .183 | .090 | .025 | .172 | .086 | .025 | .162 | .082 | .024 | .153 | .078 | .023 | |
| 9.0 | .176 | .085 | .024 | .171 | .083 | .023 | .161 | .080 | .023 | .152 | .076 | .022 | .143 | .073 | .021 | |
| 10.0 | .165 | .079 | .022 | .160 | .077 | .022 | .151 | .074 | .021 | .142 | .071 | .020 | .134 | .068 | .019 | |

| ρcc | 80% | | | 70% | | | 50% | | | 30% | | | 10% | | | 0 |
|------|-----------------------|------|------|------|------|------|--|------|------|------|------|------|------|------|------|---|
| ρw | 50% | 30% | 10% | 50% | 30% | 10% | 50% | 30% | 10% | 50% | 30% | 10% | 50% | 30% | 10% | 0 |
| ρfc | 20% | | | 20% | | | 20% | | | 20% | | | 20% | | | 0 |
| RCR | RCR:Room Cavity Ratio | | | | | | Ceiling Cavity Exitance Coefficients(CCEC) | | | | | | | | | |
| 0.0 | .297 | .297 | .297 | .254 | .254 | .254 | .173 | .173 | .173 | .099 | .099 | .099 | .032 | .032 | .032 | |
| 1.0 | .292 | .263 | .237 | .249 | .225 | .204 | .171 | .155 | .141 | .098 | .090 | .082 | .031 | .029 | .027 | |
| 2.0 | .284 | .240 | .202 | .244 | .206 | .175 | .167 | .143 | .122 | .096 | .083 | .071 | .031 | .027 | .023 | |
| 3.0 | .277 | .223 | .180 | .237 | .192 | .156 | .163 | .134 | .109 | .094 | .078 | .064 | .030 | .025 | .021 | |
| 4.0 | .269 | .210 | .165 | .231 | .182 | .144 | .159 | .127 | .101 | .092 | .074 | .060 | .030 | .024 | .020 | |
| 5.0 | .261 | .200 | .155 | .224 | .173 | .135 | .155 | .121 | .095 | .090 | .071 | .057 | .029 | .023 | .019 | |
| 6.0 | .254 | .192 | .148 | .218 | .166 | .129 | .151 | .116 | .091 | .087 | .069 | .054 | .028 | .022 | .018 | |
| 7.0 | .247 | .185 | .142 | .212 | .161 | .124 | .147 | .113 | .088 | .085 | .066 | .052 | .028 | .022 | .017 | |
| 8.0 | .240 | .180 | .138 | .207 | .156 | .121 | .143 | .110 | .086 | .083 | .065 | .051 | .027 | .021 | .017 | |
| 9.0 | .234 | .175 | .135 | .202 | .152 | .118 | .140 | .107 | .084 | .081 | .063 | .050 | .026 | .021 | .017 | |
| 10.0 | .228 | .171 | .133 | .197 | .148 | .116 | .136 | .104 | .082 | .080 | .062 | .049 | .026 | .020 | .016 | |

C Range: 0 - 360DEG
 C Interval: 22.5DEG
 Test Speed: HIGH
 Temperature:24.3DEG
 Operators:Carl
 Test Date:2022-12-09

γ Range: 0 - 180DEG
 γ Interval: 1.0DEG
 Test System:EVERFINE GO-R5000_V2 SYSTEM V2.0.351
 Humidity:48%
 Test Distance:2.532m [K=1.0000]
 Remarks:

UGR(Unified Glare Rating) Table

| | | | | | | | | | | |
|---|------------------|------|------|------|-----------|----------------|------|---------------------|------|------|
| Test:U:120.1V I:0.1330A P:15.30W PF:0.9579 Lamp Flux:1105.22x1 lm | | | | | | | | | | |
| NAME: LED Luminaires | | | | | TYPE:N/A | | | WEIGHT:N/A | | |
| SPEC.:N/A | | | | | DIM.: N/A | | | SERIAL No.:N/A | | |
| MFR.: RISING-SUN | | | | | SUR.:N/A | | | Shielding Angle:N/A | | |
| ceiling/cavity | 0.7 | 0.7 | 0.5 | 0.5 | 0.3 | 0.7 | 0.7 | 0.5 | 0.5 | 0.3 |
| walls | 0.5 | 0.3 | 0.5 | 0.3 | 0.3 | 0.5 | 0.3 | 0.5 | 0.3 | 0.3 |
| working plane | 0.2 | 0.2 | 0.2 | 0.2 | 0.2 | 0.2 | 0.2 | 0.2 | 0.2 | 0.2 |
| Room dimensions | Viewed crosswise | | | | | Viewed endwise | | | | |
| x = 2H y = 2H | 16.3 | 17.7 | 16.8 | 18.1 | 18.6 | 18.3 | 19.7 | 18.7 | 20.1 | 20.6 |
| 3H | 17.7 | 19.0 | 18.2 | 19.4 | 20.0 | 20.8 | 22.1 | 21.3 | 22.5 | 23.1 |
| 4H | 18.2 | 19.4 | 18.7 | 19.9 | 20.4 | 22.1 | 23.4 | 22.6 | 23.9 | 24.4 |
| 6H | 18.4 | 19.6 | 19.0 | 20.1 | 20.7 | 23.6 | 24.8 | 24.2 | 25.3 | 25.9 |
| 8H | 18.5 | 19.6 | 19.0 | 20.1 | 20.7 | 24.5 | 25.6 | 25.0 | 26.1 | 26.7 |
| 12H | 18.5 | 19.6 | 19.1 | 20.1 | 20.7 | 25.4 | 26.5 | 26.0 | 27.0 | 27.6 |
| 4H 2H | 17.3 | 18.6 | 17.9 | 19.1 | 19.6 | 18.8 | 20.0 | 19.3 | 20.5 | 21.1 |
| 3H | 19.0 | 20.1 | 19.5 | 20.6 | 21.2 | 21.5 | 22.6 | 22.1 | 23.2 | 23.8 |
| 4H | 19.6 | 20.6 | 20.2 | 21.2 | 21.8 | 23.1 | 24.1 | 23.7 | 24.7 | 25.3 |
| 6H | 20.1 | 21.0 | 20.7 | 21.6 | 22.2 | 24.8 | 25.7 | 25.4 | 26.3 | 27.0 |
| 8H | 20.3 | 21.1 | 20.9 | 21.7 | 22.4 | 25.8 | 26.6 | 26.4 | 27.2 | 27.9 |
| 12H | 20.3 | 21.1 | 20.9 | 21.7 | 22.4 | 26.9 | 27.7 | 27.5 | 28.3 | 29.0 |
| 8H 4H | 20.6 | 21.4 | 21.2 | 22.0 | 22.7 | 23.4 | 24.2 | 24.0 | 24.8 | 25.5 |
| 6H | 21.4 | 22.1 | 22.1 | 22.8 | 23.5 | 25.4 | 26.1 | 26.1 | 26.8 | 27.5 |
| 8H | 21.8 | 22.4 | 22.4 | 23.0 | 23.8 | 26.6 | 27.2 | 27.3 | 27.9 | 28.6 |
| 12H | 22.0 | 22.6 | 22.7 | 23.2 | 24.0 | 28.0 | 28.5 | 28.7 | 29.2 | 30.0 |
| 12H 4H | 20.9 | 21.7 | 21.6 | 22.3 | 23.0 | 23.4 | 24.2 | 24.0 | 24.8 | 25.5 |
| 6H | 22.0 | 22.6 | 22.7 | 23.3 | 24.0 | 25.5 | 26.2 | 26.2 | 26.8 | 27.6 |
| 8H | 22.5 | 23.0 | 23.2 | 23.7 | 24.5 | 26.8 | 27.4 | 27.5 | 28.0 | 28.8 |
| Variations with the observer position at spacings: | | | | | | | | | | |
| S = 1.0H | + 0.1 / - 0.2 | | | | | + 0.1 / - 0.1 | | | | |
| 1.5H | + 0.2 / - 0.3 | | | | | + 0.2 / - 0.3 | | | | |
| 2.0H | + 0.2 / - 0.4 | | | | | + 0.2 / - 0.3 | | | | |

CIE Pub.117 Corrected 1105 lm Total Lamp Luminous Flux.(8log(F/F0) = 0.3)

C Range: 0 - 360DEG
 C Interval: 22.5DEG
 Test Speed: HIGH
 Temperature:24.3DEG
 Operators:Carl
 Test Date:2022-12-09

γ Range: 0 - 180DEG
 γ Interval: 1.0DEG
 Test System:EVERFINE GO-R5000_V2 SYSTEM V2.0.351
 Humidity:48%
 Test Distance:2.532m [K=1.0000]
 Remarks:

UTILIZATION FACTORS TABLE

| | | |
|---|-----------|---------------------|
| Test:U:120.1V I:0.1330A P:15.30W PF:0.9579 Lamp Flux:1105.22x1 lm | | |
| NAME: LED Luminaires | TYPE:N/A | WEIGHT:N/A |
| SPEC.:N/A | DIM.: N/A | SERIAL No.:N/A |
| MFR.: RISING-SUN | SUR.:N/A | Shielding Angle:N/A |

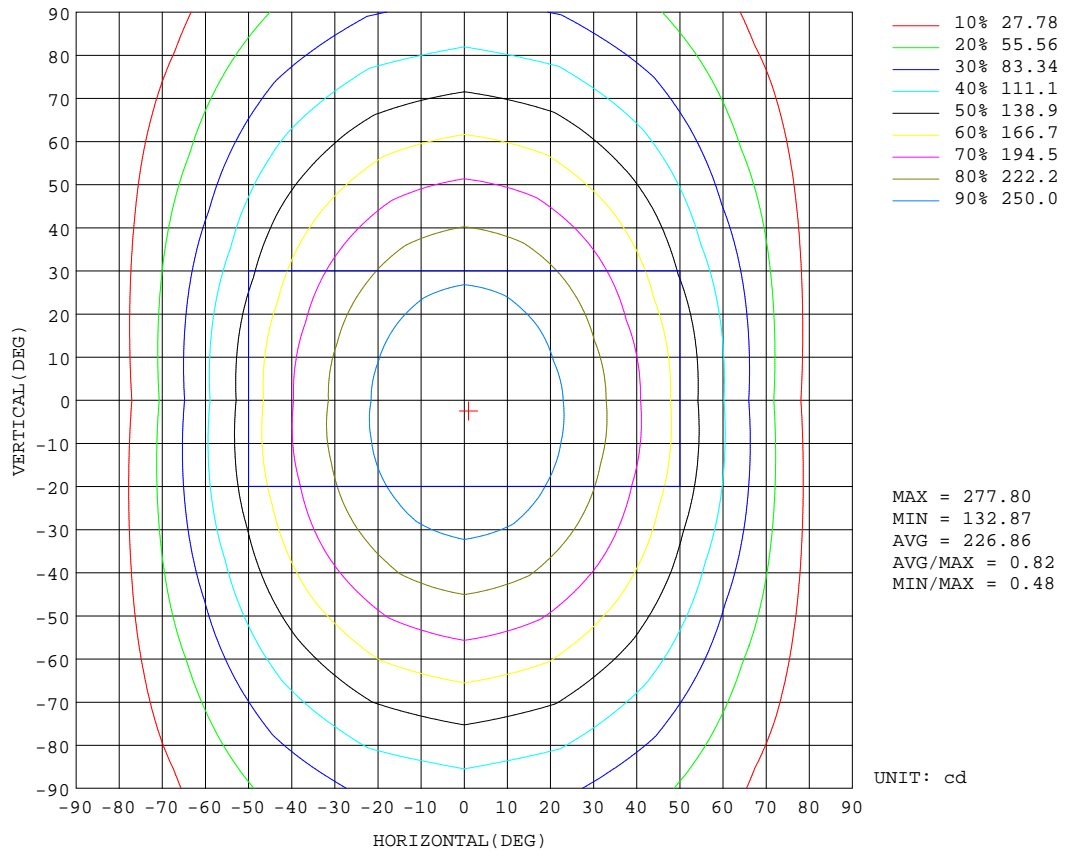
| REFLECTANCE | | | | | | | | | | |
|----------------------------------|---|-----|-----------|-----|-----|-----|---------------|-----|-----|--------|
| Ceiling | 0.8 | 0.8 | 0.8 | 0.7 | 0.7 | 0.7 | 0.5 | 0.5 | 0.5 | 0 |
| Walls | 0.7 | 0.5 | 0.3 | 0.7 | 0.5 | 0.3 | 0.7 | 0.5 | 0.3 | 0 |
| Working plane | 0.2 | 0.2 | 0.2 | 0.2 | 0.2 | 0.2 | 0.2 | 0.2 | 0.2 | 0 |
| ROOM INDEX | UTILIZATION FACTORS(PERCENT) $k(RI) \times RCR = 5$ | | | | | | | | | |
| k = 0.60 | 50 | 38 | 31 | 49 | 37 | 30 | 47 | 37 | 30 | 23 |
| 0.80 | 59 | 47 | 39 | 58 | 46 | 39 | 55 | 45 | 38 | 30 |
| 1.00 | 67 | 55 | 47 | 66 | 54 | 46 | 62 | 55 | 45 | 37 |
| 1.25 | 74 | 62 | 54 | 72 | 61 | 53 | 68 | 59 | 52 | 43 |
| 1.50 | 79 | 68 | 59 | 77 | 66 | 58 | 72 | 63 | 57 | 47 |
| 2.00 | 86 | 76 | 68 | 84 | 74 | 67 | 78 | 70 | 64 | 53 |
| 2.50 | 91 | 81 | 74 | 88 | 79 | 72 | 82 | 75 | 69 | 57 |
| 3.00 | 94 | 86 | 79 | 91 | 83 | 77 | 85 | 79 | 73 | 61 |
| 4.00 | 99 | 91 | 85 | 95 | 89 | 83 | 89 | 83 | 79 | 66 |
| 5.00 | 102 | 95 | 90 | 98 | 92 | 87 | 91 | 87 | 83 | 69 |
| ROOM INDEX | UF(total) | | | | | | | | | Direct |
| According to DIN EN 13032-2 2004 | | | Suspended | | | | SHRNOM = 1.25 | | | |

C Range: 0 - 360DEG
 C Interval: 22.5DEG
 Test Speed: HIGH
 Temperature:24.3DEG
 Operators:Carl
 Test Date:2022-12-09

γ Range: 0 - 180DEG
 γ Interval: 1.0DEG
 Test System:EVERFINE GO-R5000_V2 SYSTEM V2.0.351
 Humidity:48%
 Test Distance:2.532m [K=1.0000]
 Remarks:

ISOCANDELA DIAGRAM

| | | |
|---|-----------|---------------------|
| Test:U:120.1V I:0.1330A P:15.30W PF:0.9579 Lamp Flux:1105.22x1 lm | | |
| NAME: LED Luminaires | TYPE:N/A | WEIGHT:N/A |
| SPEC.:N/A | DIM.: N/A | SERIAL No.:N/A |
| MFR.: RISING-SUN | SUR.:N/A | Shielding Angle:N/A |

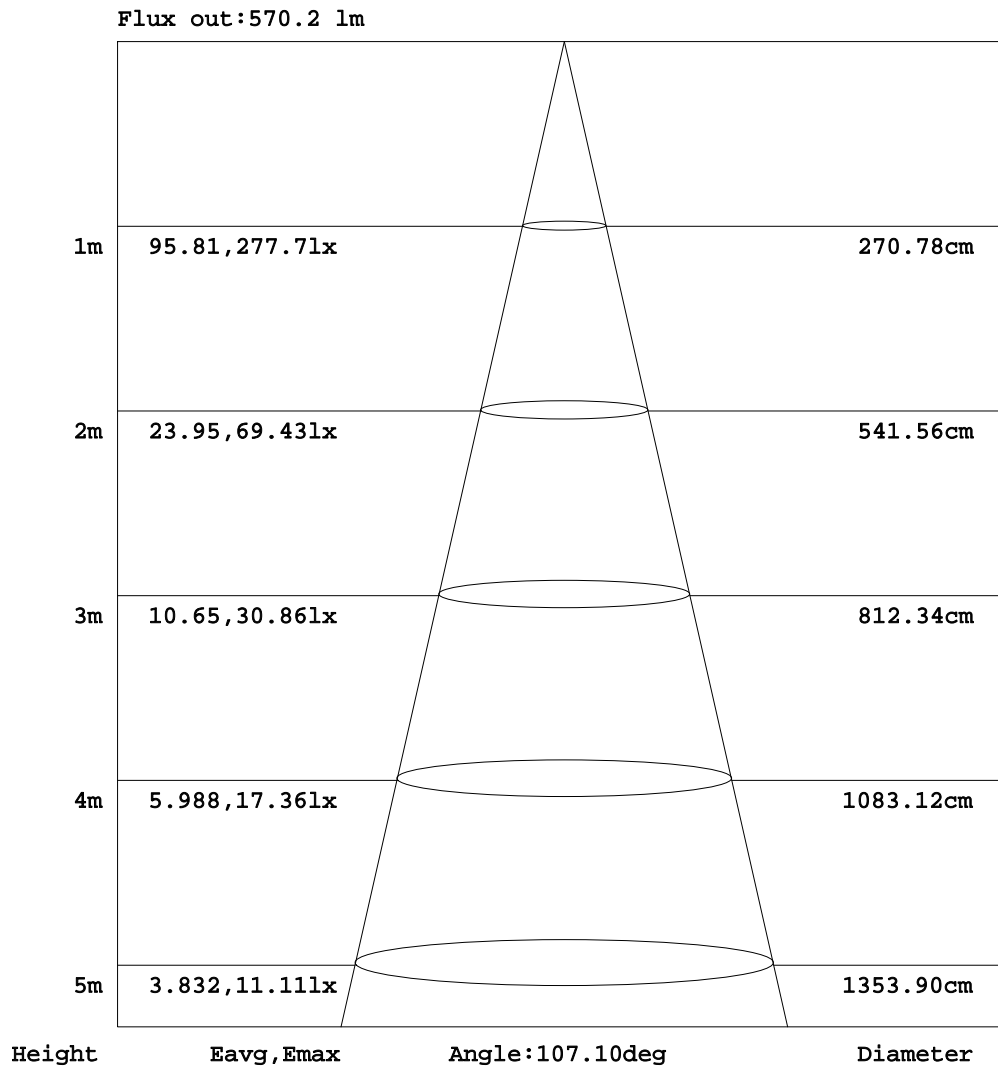


C Range: 0 - 360DEG
 C Interval: 22.5DEG
 Test Speed: HIGH
 Temperature:24.3DEG
 Operators:Carl
 Test Date:2022-12-09

γ Range: 0 - 180DEG
 γ Interval: 1.0DEG
 Test System:EVERFINE GO-R5000_V2 SYSTEM V2.0.351
 Humidity:48%
 Test Distance:2.532m [K=1.0000]
 Remarks:

AAI Figure

| | | |
|---|-----------|---------------------|
| Test:U:120.1V I:0.1330A P:15.30W PF:0.9579 Lamp Flux:1105.22x1 lm | | |
| NAME: LED Luminaires | TYPE:N/A | WEIGHT:N/A |
| SPEC.:N/A | DIM.: N/A | SERIAL No.:N/A |
| MFR.: RISING-SUN | SUR.:N/A | Shielding Angle:N/A |



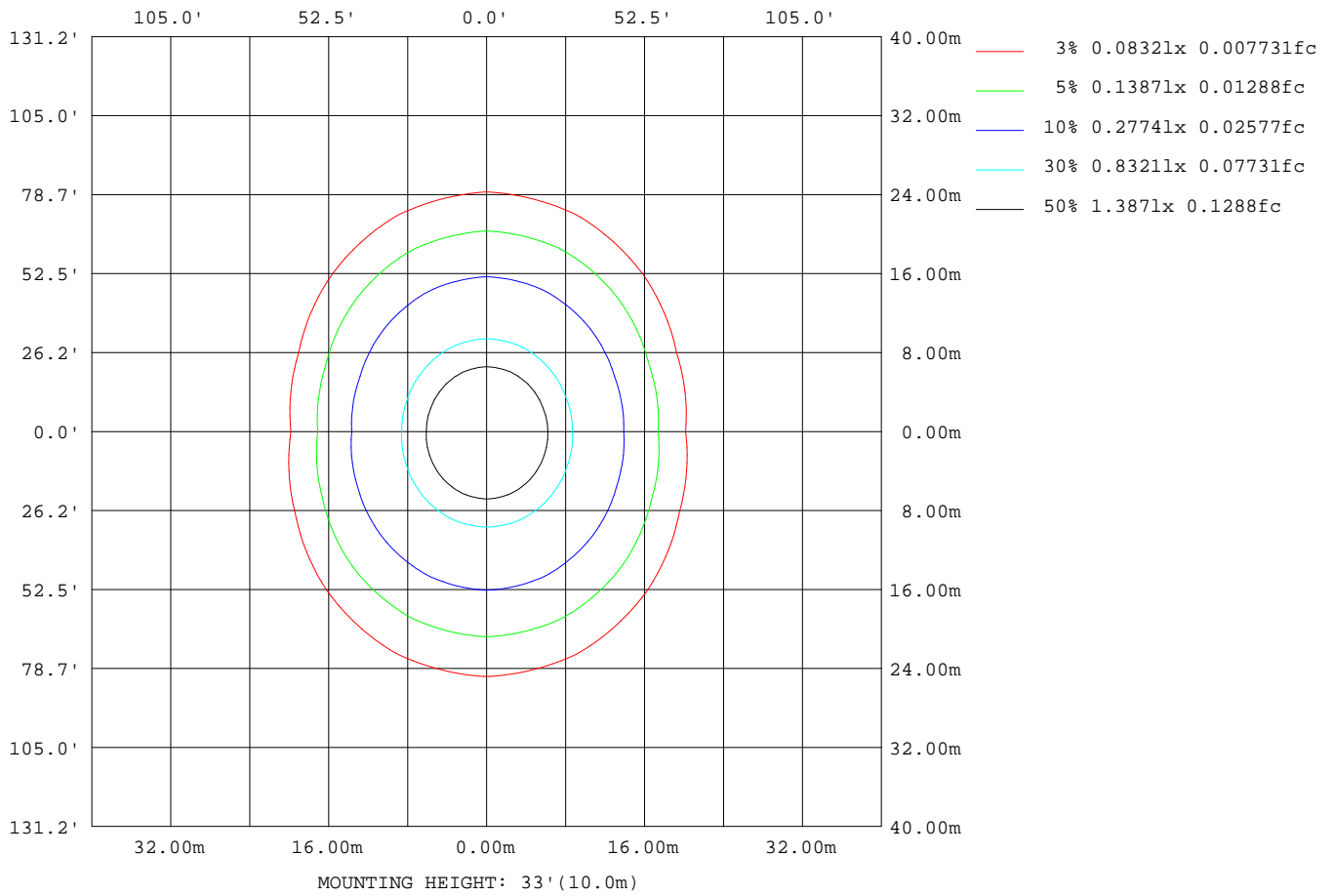
Note:The Curves indicate the illuminated area and the average illumination when the luminaire is at different distance.

C Range: 0 - 360DEG
 C Interval: 22.5DEG
 Test Speed: HIGH
 Temperature:24.3DEG
 Operators:Carl
 Test Date:2022-12-09

γ Range: 0 - 180DEG
 γ Interval: 1.0DEG
 Test System:EVERFINE GO-R5000_V2 SYSTEM V2.0.351
 Humidity:48%
 Test Distance:2.532m [K=1.0000]
 Remarks:

ISOLUX DIAGRAM

| | | |
|---|-----------|---------------------|
| Test:U:120.1V I:0.1330A P:15.30W PF:0.9579 Lamp Flux:1105.22x1 lm | | |
| NAME: LED Luminaires | TYPE:N/A | WEIGHT:N/A |
| SPEC.:N/A | DIM.: N/A | SERIAL No.:N/A |
| MFR.: RISING-SUN | SUR.:N/A | Shielding Angle:N/A |



C Range: 0 - 360DEG
 C Interval: 22.5DEG
 Test Speed: HIGH
 Temperature:24.3DEG
 Operators:Carl
 Test Date:2022-12-09

γ Range: 0 - 180DEG
 γ Interval: 1.0DEG
 Test System:EVERFINE GO-R5000_V2 SYSTEM V2.0.351
 Humidity:48%
 Test Distance:2.532m [K=1.0000]
 Remarks:

LED Avg.L Report

| | | |
|---|-----------|---------------------|
| Test:U:120.1V I:0.1330A P:15.30W PF:0.9579 Lamp Flux:1105.22x1 lm | | |
| NAME: LED Luminaires | TYPE:N/A | WEIGHT:N/A |
| SPEC.:N/A | DIM.: N/A | SERIAL No.:N/A |
| MFR.: RISING-SUN | SUR.:N/A | Shielding Angle:N/A |

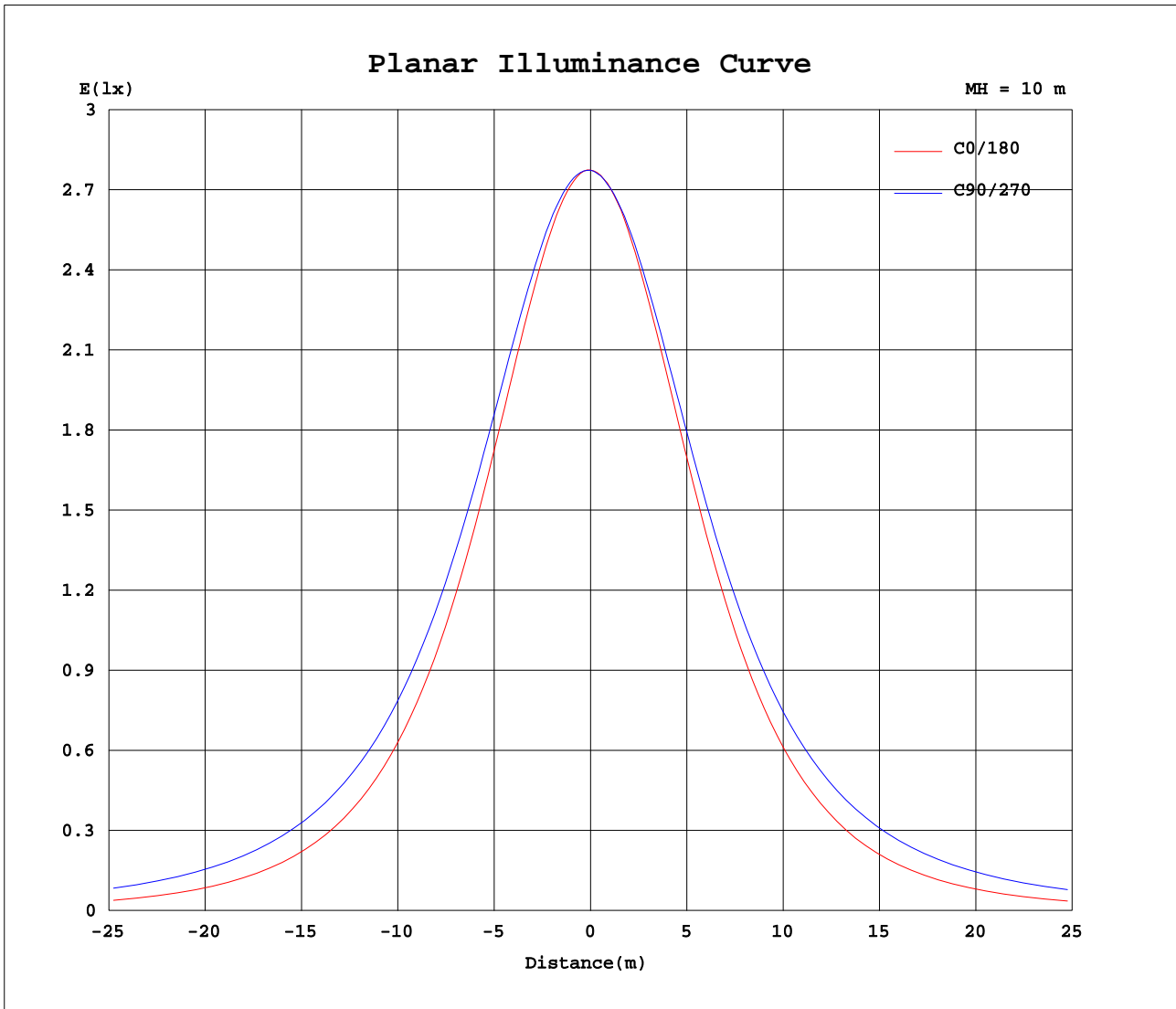
| AvgL | cd/m2 |
|----------------|-------|
| L_0~180(65)av | 3122 |
| L_0~180(75)av | 2303 |
| L_0~180(85)av | 873 |
| L_90~270(65)av | 5965 |
| L_90~270(75)av | 8041 |
| L_90~270(85)av | 19157 |
| L_45(65)av | 4747 |
| L_45(75)av | 5852 |
| L_45(85)av | 12523 |

Standard: GB/T 29293-2012

C Range: 0 - 360DEG
 C Interval: 22.5DEG
 Test Speed: HIGH
 Temperature:24.3DEG
 Operators:Carl
 Test Date:2022-12-09

γ Range: 0 - 180DEG
 γ Interval: 1.0DEG
 Test System:EVERFINE GO-R5000_V2 SYSTEM V2.0.351
 Humidity:48%
 Test Distance:2.532m [K=1.0000]
 Remarks:

Planar Illuminance Curve



C Range: 0 - 360DEG
 C Interval: 22.5DEG
 Test Speed: HIGH
 Temperature: 24.3DEG
 Operators: Carl
 Test Date: 2022-12-09

γ Range: 0 - 180DEG
 γ Interval: 1.0DEG
 Test System: EVERFINE GO-R5000_V2 SYSTEM V2.0.351
 Humidity: 48%
 Test Distance: 2.532m [K=1.0000]
 Remarks:

LUMINOUS DISTRIBUTION INTENSITY DATA

| | | |
|---|-----------|---------------------|
| Test:U:120.1V I:0.1330A P:15.30W PF:0.9579 Lamp Flux:1105.22x1 lm | | |
| NAME: LED Luminaires | TYPE:N/A | WEIGHT:N/A |
| SPEC.:N/A | DIM.: N/A | SERIAL No.:N/A |
| MFR.: RISING-SUN | SUR.:N/A | Shielding Angle:N/A |

Table--1

UNIT: cd

| C(DEG) γ (DEG) | 0 | 22.5 | 45 | 67.5 | 90 | 112.5 | 135 | 157.5 | 180 | 202.5 | 225 | 247.5 | 270 | 292.5 | 315 | 337.5 | | | |
|--------------------|------|------|------|------|------|-------|------|-------|------|-------|------|-------|------|-------|------|-------|--|--|--|
| 0 | 277 | 277 | 277 | 277 | 277 | 277 | 277 | 277 | 277 | 277 | 277 | 277 | 277 | 277 | 277 | 277 | | | |
| 5 | 276 | 277 | 277 | 278 | 278 | 277 | 277 | 276 | 276 | 275 | 275 | 276 | 275 | 276 | 276 | 276 | | | |
| 10 | 273 | 273 | 274 | 276 | 276 | 276 | 274 | 273 | 271 | 271 | 271 | 272 | 272 | 272 | 272 | 272 | | | |
| 15 | 266 | 267 | 270 | 273 | 273 | 272 | 269 | 266 | 264 | 263 | 264 | 266 | 267 | 267 | 266 | 265 | | | |
| 20 | 257 | 259 | 263 | 267 | 269 | 266 | 262 | 258 | 254 | 254 | 256 | 259 | 261 | 260 | 258 | 256 | | | |
| 25 | 245 | 248 | 254 | 260 | 262 | 259 | 253 | 246 | 241 | 242 | 246 | 251 | 253 | 252 | 248 | 244 | | | |
| 30 | 231 | 235 | 244 | 252 | 254 | 250 | 242 | 234 | 227 | 228 | 234 | 241 | 244 | 242 | 236 | 231 | | | |
| 35 | 215 | 221 | 231 | 241 | 245 | 240 | 229 | 218 | 211 | 213 | 221 | 230 | 234 | 231 | 223 | 216 | | | |
| 40 | 198 | 204 | 217 | 230 | 234 | 228 | 215 | 202 | 193 | 196 | 206 | 217 | 223 | 219 | 209 | 199 | | | |
| 45 | 178 | 186 | 202 | 217 | 222 | 216 | 200 | 184 | 173 | 177 | 191 | 204 | 211 | 206 | 194 | 181 | | | |
| 50 | 157 | 167 | 186 | 203 | 210 | 202 | 184 | 164 | 152 | 158 | 175 | 191 | 198 | 192 | 177 | 162 | | | |
| 55 | 135 | 147 | 169 | 189 | 196 | 188 | 167 | 144 | 129 | 137 | 158 | 177 | 185 | 178 | 161 | 141 | | | |
| 60 | 112 | 126 | 152 | 174 | 183 | 173 | 150 | 124 | 106 | 117 | 141 | 162 | 171 | 164 | 144 | 121 | | | |
| 65 | 88.0 | 105 | 135 | 159 | 168 | 158 | 133 | 103 | 82.6 | 96.7 | 124 | 148 | 158 | 149 | 127 | 100 | | | |
| 70 | 63.9 | 84.9 | 118 | 144 | 154 | 143 | 117 | 83.3 | 58.9 | 77.1 | 108 | 133 | 144 | 134 | 111 | 80.3 | | | |
| 75 | 40.7 | 65.9 | 102 | 129 | 140 | 129 | 101 | 64.8 | 36.4 | 59.1 | 93.1 | 119 | 129 | 120 | 95.3 | 61.8 | | | |
| 80 | 20.2 | 48.5 | 87.2 | 115 | 126 | 115 | 86.8 | 48.0 | 16.9 | 43.4 | 79.1 | 106 | 116 | 107 | 81.1 | 45.5 | | | |
| 85 | 6.12 | 34.7 | 73.7 | 102 | 112 | 102 | 73.6 | 34.6 | 3.72 | 30.6 | 66.6 | 93.1 | 103 | 93.9 | 68.3 | 32.3 | | | |
| 90 | 0.09 | 24.3 | 61.5 | 89.5 | 99.7 | 89.3 | 61.7 | 24.7 | 0.05 | 21.4 | 55.6 | 81.4 | 91.4 | 82.0 | 56.9 | 22.4 | | | |
| 95 | 0.19 | 17.2 | 51.3 | 78.0 | 87.9 | 77.9 | 51.6 | 18.0 | 0.20 | 15.4 | 46.4 | 70.8 | 80.3 | 71.3 | 47.3 | 15.9 | | | |
| 100 | 0.57 | 12.7 | 42.7 | 67.5 | 76.9 | 67.6 | 43.2 | 13.7 | 0.67 | 11.7 | 38.7 | 61.2 | 70.1 | 61.7 | 39.4 | 11.9 | | | |
| 105 | 1.32 | 10.2 | 35.5 | 57.7 | 66.7 | 57.9 | 36.1 | 11.1 | 1.48 | 9.66 | 32.3 | 52.7 | 60.7 | 52.9 | 32.8 | 9.67 | | | |
| 110 | 2.29 | 8.76 | 29.6 | 49.3 | 57.1 | 49.5 | 30.3 | 9.51 | 2.36 | 8.52 | 27.2 | 45.0 | 52.2 | 45.2 | 27.5 | 8.52 | | | |
| 115 | 3.27 | 8.07 | 24.9 | 41.8 | 48.7 | 42.2 | 25.5 | 8.61 | 3.28 | 7.97 | 23.1 | 38.4 | 44.7 | 38.5 | 23.3 | 8.06 | | | |
| 120 | 4.25 | 7.73 | 21.1 | 35.4 | 41.4 | 35.7 | 21.7 | 8.19 | 4.22 | 7.75 | 19.8 | 32.7 | 38.0 | 32.7 | 20.0 | 7.92 | | | |
| 125 | 5.26 | 7.66 | 18.1 | 29.9 | 34.9 | 30.1 | 18.6 | 8.06 | 5.16 | 7.74 | 17.2 | 27.8 | 32.3 | 27.8 | 17.3 | 7.95 | | | |
| 130 | 6.23 | 7.70 | 15.8 | 25.2 | 29.2 | 25.4 | 16.2 | 8.12 | 6.08 | 7.83 | 15.1 | 23.6 | 27.3 | 23.7 | 15.3 | 8.10 | | | |
| 135 | 7.18 | 7.83 | 14.0 | 21.3 | 24.4 | 21.4 | 14.3 | 8.13 | 6.97 | 8.03 | 13.5 | 19.9 | 23.0 | 20.3 | 13.9 | 8.31 | | | |
| 140 | 8.12 | 8.28 | 12.6 | 18.0 | 20.4 | 18.1 | 12.9 | 8.31 | 7.79 | 8.28 | 12.0 | 17.0 | 19.4 | 17.6 | 12.9 | 8.58 | | | |
| 145 | 8.90 | 8.61 | 11.6 | 15.5 | 17.3 | 15.6 | 11.9 | 8.79 | 8.57 | 8.47 | 10.9 | 14.5 | 16.5 | 15.4 | 12.1 | 8.93 | | | |
| 150 | 9.64 | 9.16 | 10.9 | 13.6 | 14.8 | 13.7 | 11.1 | 9.37 | 9.32 | 9.04 | 10.2 | 12.5 | 14.2 | 13.7 | 11.6 | 9.22 | | | |
| 155 | 10.3 | 9.74 | 10.7 | 12.2 | 13.0 | 12.3 | 10.5 | 9.86 | 9.72 | 9.73 | 9.70 | 11.2 | 12.2 | 12.2 | 11.2 | 9.48 | | | |
| 160 | 10.8 | 9.62 | 10.4 | 11.3 | 11.7 | 11.3 | 10.3 | 10.2 | 10.0 | 10.5 | 9.63 | 10.6 | 11.2 | 11.3 | 10.8 | 9.88 | | | |
| 165 | 11.0 | 9.98 | 10.4 | 10.9 | 10.9 | 10.8 | 10.6 | 10.5 | 10.4 | 10.7 | 9.58 | 10.3 | 10.7 | 10.7 | 10.3 | 10.0 | | | |
| 170 | 9.81 | 10.0 | 9.69 | 10.1 | 10.7 | 10.2 | 10.1 | 9.53 | 8.04 | 8.18 | 9.37 | 9.37 | 10.1 | 10.6 | 10.2 | 9.83 | | | |
| 175 | 7.05 | 7.11 | 8.33 | 8.04 | 7.85 | 8.38 | 6.80 | 6.27 | 5.38 | 5.42 | 6.25 | 6.95 | 8.35 | 8.36 | 8.70 | 8.95 | | | |
| 180 | 4.44 | 4.23 | 3.07 | 1.66 | 6.23 | 1.26 | 3.08 | 3.75 | 4.80 | 4.79 | 4.16 | 3.59 | 2.55 | 0.61 | 2.54 | 3.57 | | | |

C Range: 0 - 360DEG
 C Interval: 22.5DEG
 Test Speed: HIGH
 Temperature:24.3DEG
 Operators:Carl
 Test Date:2022-12-09

γ Range: 0 - 180DEG
 γ Interval: 1.0DEG
 Test System:EVERFINE GO-R5000_V2 SYSTEM V2.0.351
 Humidity:48%
 Test Distance:2.532m [K=1.0000]
 Remarks: