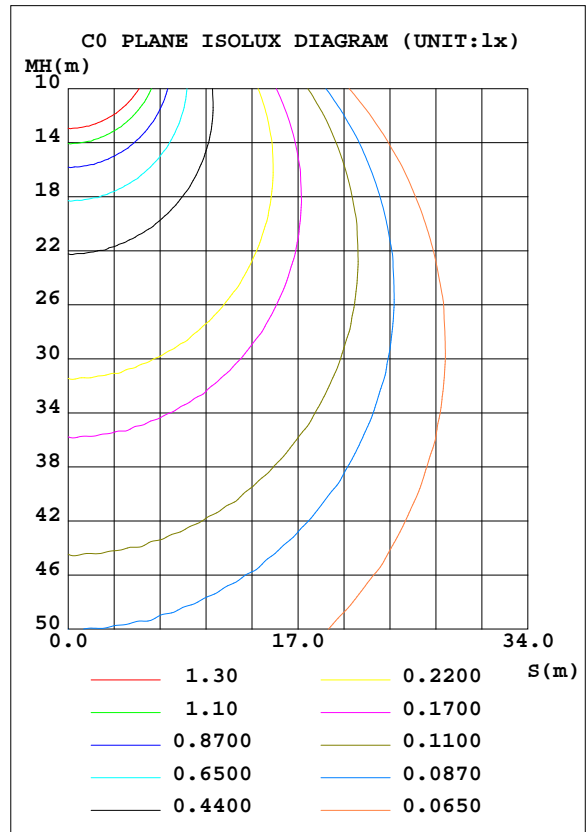
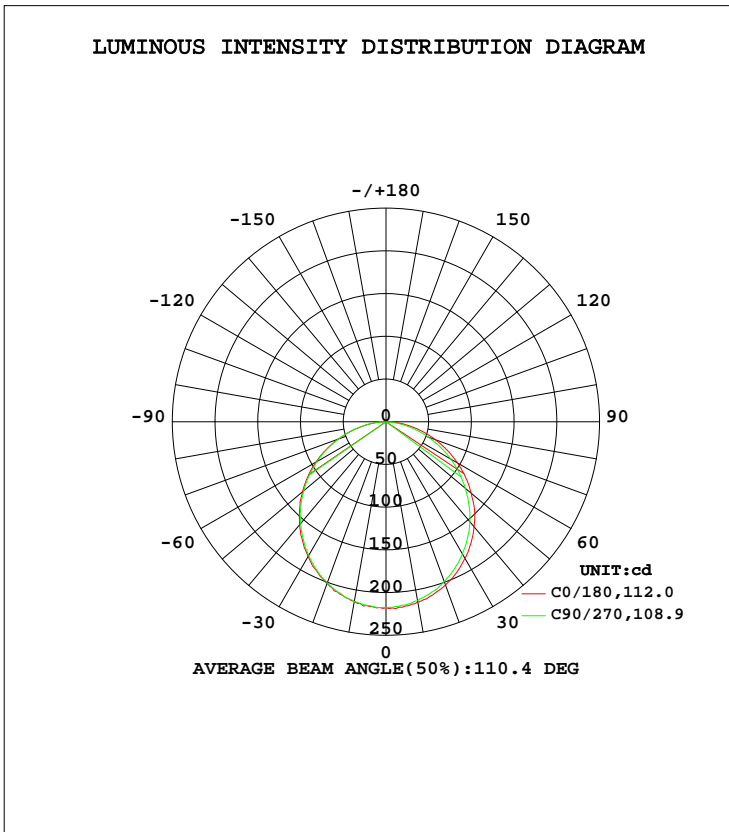


**LUMINAIRE PHOTOMETRIC TEST REPORT**

Test:U:120.08V I:0.0708A P:8.1900W PF:0.9633 Freq:60.00Hz Lamp Flux:613.202x1 lm		
NAME: ASD-UCS-18D8CC	TYPE: N/A	WEIGHT: N/A
SPEC.: N/A	DIM.: N/A	SERIAL No.: N/A
MFR.: ASD Lighting Corp	SUR.: N/A	Shielding Angle: N/A

DATA OF LAMP		PHOTOMETRIC DATA			
MODEL	ASD-UCS-18D8CC	Imax(cd)	219.0	S/MH(C0/180)	1.26
NOMINAL POWER(W)	8	LOR(%)	100.0	S/MH(C90/270)	1.23
RATED VOLTAGE(V)	120	TOTAL FLUX(lm)	613.20	η UP, DN(C0-180)	0.1,50.4
NOMINAL FLUX(lm)	613.202	CIE CLASS	DIRECT	η UP, DN(C180-360)	0.0,49.5
LAMPS INSIDE	1	η up(%)	0.1	CIBSE SHR NOM	1.25
TEST VOLTAGE(V)	120	η down(%)	99.9	CIBSE SHR MAX	1.35



C Range: 0 - 360DEG  
 C Interval: 22.5DEG  
 Test Speed: HIGH  
 Temperature:24.9DEG  
 Operators:Water  
 Test Date:2023-09-08

γ Range: 0 - 180DEG  
 γ Interval: 1.0DEG  
 Test System:EVERFINE GO-R5000\_V2 SYSTEM V2.00.446  
 Humidity:50%  
 Test Distance:2.513m [K=1.0000]  
 Remarks: Model No: UCL-31B-18G

ZONAL FLUX DIAGRAM

ZONAL FLUX DIAGRAM:

γ	C0	C45	C90	C135	C180	C225	C270	C315	γ	Φ zone	Φ total	%lum, lamp
10	213.4	213.3	213.6	213.9	214.5	214.4	212.6	212.8	0- 10	20.60	20.60	3.36,3.36
20	201.3	200.6	200.8	202.3	203.3	203.0	199.4	199.3	10- 20	58.80	79.40	12.9,12.9
30	182.3	180.5	180.7	183.2	184.9	184.0	178.8	179.5	20- 30	88.63	168.0	27.4,27.4
40	157.2	155.0	155.2	158.4	160.5	159.2	152.8	153.7	30- 40	106.2	274.3	44.7,44.7
50	127.7	125.1	125.6	128.8	130.5	128.1	121.1	122.7	40- 50	109.4	383.7	62.6,62.6
60	95.01	92.39	93.21	96.10	96.81	94.64	87.50	89.50	50- 60	98.31	482.0	78.6,78.6
70	59.45	57.85	59.31	61.74	61.50	59.40	52.77	54.76	60- 70	75.04	557.0	90.8,90.8
80	25.45	24.68	26.59	28.17	27.69	25.53	20.13	21.61	70- 80	43.60	600.6	98,98
90	0.0446	0.0315	0.3086	1.046	0.1948	0.0088	0.0052	0.0048	80- 90	11.91	612.6	99.9,99.9
100	0.0499	0.0673	0.0507	0.0659	0.0204	0.0175	0.0178	0.0170	90-100	0.0411	612.6	99.9,99.9
110	0.0614	0.0676	0.0627	0.0673	0.0350	0.0321	0.0327	0.0309	100-110	0.0454	612.6	99.9,99.9
120	0.0850	0.0884	0.0848	0.0875	0.0518	0.0494	0.0504	0.0496	110-120	0.0571	612.7	99.9,99.9
130	0.1247	0.1288	0.1292	0.1286	0.0759	0.0732	0.0723	0.0729	120-130	0.0749	612.8	99.9,99.9
140	0.1975	0.2160	0.2051	0.2002	0.1009	0.1016	0.1010	0.1016	130-140	0.0954	612.9	99.9,99.9
150	0.2864	0.3163	0.3186	0.2955	0.1236	0.1328	0.1362	0.1309	140-150	0.1171	613.0	100,100
160	0.3581	0.3732	0.3776	0.3690	0.1714	0.1741	0.1741	0.1663	150-160	0.1139	613.1	100,100
170	0.3357	0.3471	0.3534	0.3436	0.2128	0.2051	0.1992	0.1958	160-170	0.0785	613.2	100,100
180	0.2845	0.2711	0.2684	0.2834	0.2854	0.2818	0.2718	0.2717	170-180	0.0263	613.2	100,100
DEG	LUMINOUS INTENSITY:cd									UNIT:lm		

Conical surface Flux(90deg): 329.54 lm

%lum = 53.7%  
 %lamp = 53.7%

Conical surface Flux(120deg): 482 lm

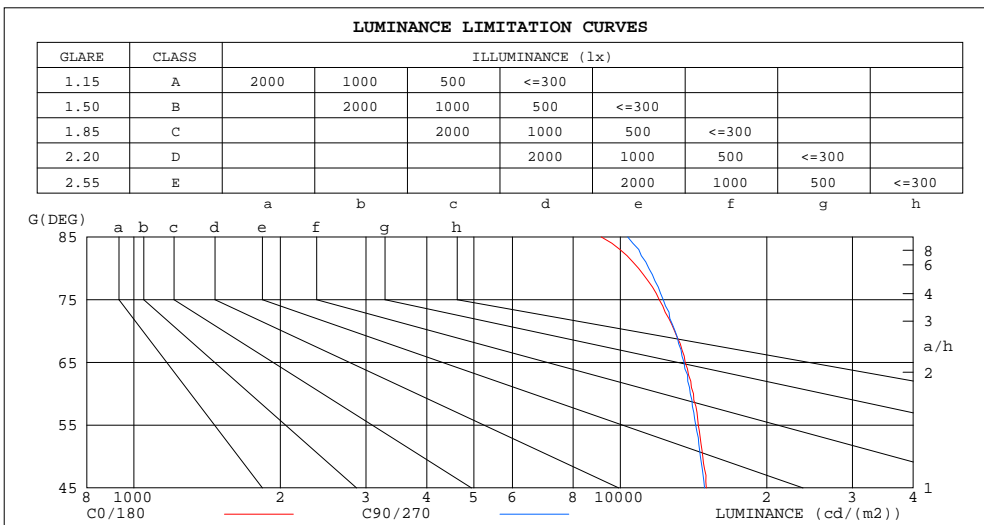
%lum = 78.6%  
 %lamp = 78.6%

C Range: 0 - 360DEG  
 C Interval: 22.5DEG  
 Test Speed: HIGH  
 Temperature:24.9DEG  
 Operators:Water  
 Test Date:2023-09-08

γ Range: 0 - 180DEG  
 γ Interval: 1.0DEG  
 Test System:EVERFINE GO-R5000\_V2 SYSTEM V2.00.446  
 Humidity:50%  
 Test Distance:2.513m [K=1.0000]  
 Remarks: Model No: UCL-31B-18G

**LUMINANCE LIMITATION CURVES**

Test:U:120.08V I:0.0708A P:8.1900W PF:0.9633 Freq:60.00Hz Lamp Flux:613.202x1 lm		
NAME: ASD-UCS-18D8CC	TYPE: N/A	WEIGHT: N/A
SPEC.: N/A	DIM.: N/A	SERIAL No.: N/A
MFR.: ASD Lighting Corp	SUR.: N/A	Shielding Angle: N/A



LUMINANCE cd/(m2)		
G (DEG)	C0/180	C90/270
85	9139	10354
80	10903	11442
75	12021	12257
70	12930	12960
65	13591	13519
60	14136	13930
55	14465	14290
50	14779	14607
45	15027	14895

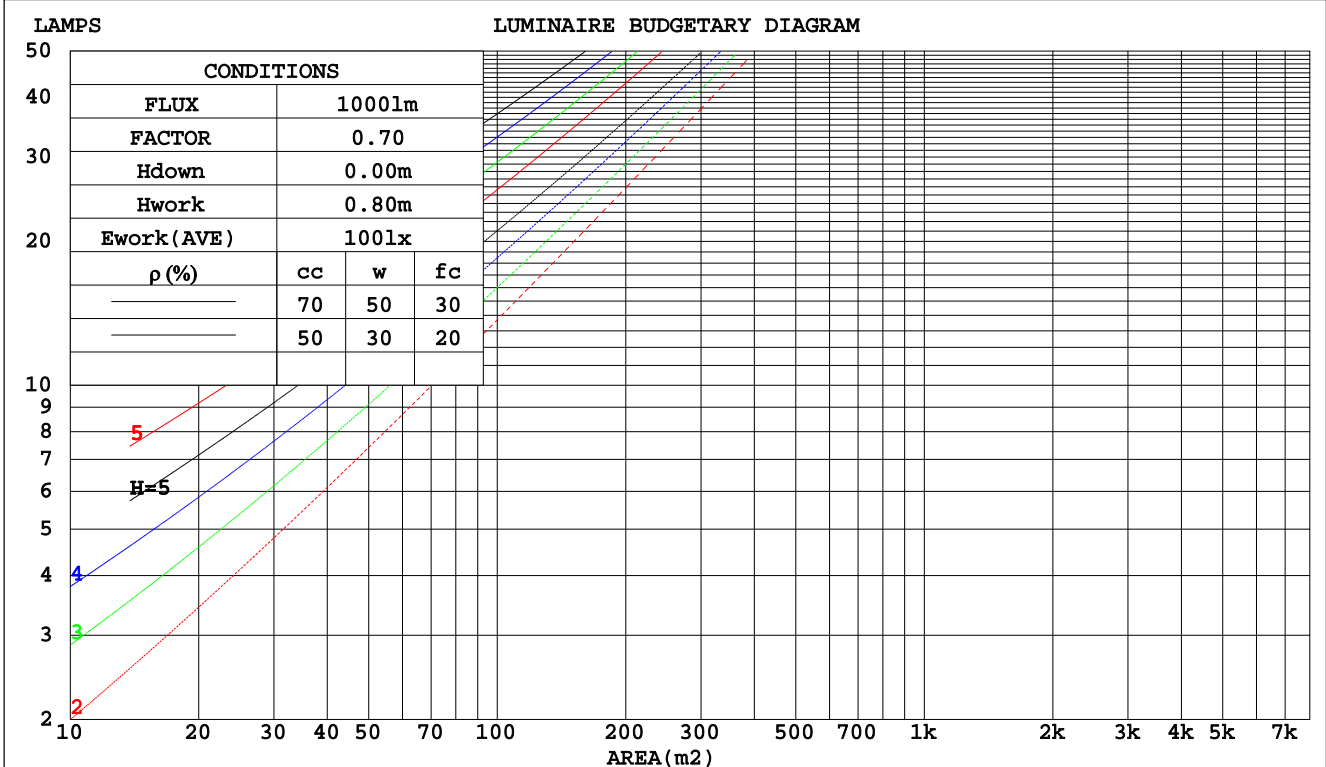
C Range: 0 - 360DEG  
 C Interval: 22.5DEG  
 Test Speed: HIGH  
 Temperature: 24.9DEG  
 Operators: Water  
 Test Date: 2023-09-08

$\gamma$  Range: 0 - 180DEG  
 $\gamma$  Interval: 1.0DEG  
 Test System: EVERFINE GO-R5000\_V2 SYSTEM V2.00.446  
 Humidity: 50%  
 Test Distance: 2.513m [K=1.0000]  
 Remarks: Model No: UCL-31B-18G

CU AND LUMINAIRE BUDGETARY ESTIMATE DIAGRAM

Test:U:120.08V I:0.0708A P:8.1900W PF:0.9633 Freq:60.00Hz Lamp Flux:613.202x1 lm		
NAME: ASD-UCS-18D8CC	TYPE: N/A	WEIGHT: N/A
SPEC.: N/A	DIM.: N/A	SERIAL No.: N/A
MFR.: ASD Lighting Corp	SUR.: N/A	Shielding Angle: N/A

pcc	80%			70%			50%			30%			10%			0
	50%	30%	10%	50%	30%	10%	50%	30%	10%	50%	30%	10%	50%	30%	10%	0
pw																0
pfc	20%			20%			20%			20%			20%			0
RCR	RCR:Room Cavity Ratio      Coefficients of Utilization(CU)															
0.0	1.19	1.19	1.19	1.16	1.16	1.16	1.11	1.11	1.11	1.06	1.06	1.06	1.02	1.02	1.02	.00
1.0	1.04	.99	.96	1.02	.98	.94	.97	.94	.91	.93	.91	.88	.90	.88	.86	.83
2.0	.90	.84	.78	.88	.82	.77	.85	.80	.75	.82	.77	.73	.79	.75	.72	.69
3.0	.79	.71	.65	.78	.70	.64	.75	.68	.63	.72	.66	.62	.69	.65	.61	.58
4.0	.70	.61	.55	.69	.61	.54	.66	.59	.53	.64	.58	.53	.62	.56	.52	.50
5.0	.63	.54	.47	.62	.53	.47	.59	.52	.46	.57	.51	.46	.56	.50	.45	.43
6.0	.56	.47	.41	.56	.47	.41	.54	.46	.40	.52	.45	.40	.50	.44	.40	.38
7.0	.51	.42	.36	.50	.42	.36	.49	.41	.36	.47	.41	.36	.46	.40	.35	.33
8.0	.47	.38	.32	.46	.38	.32	.45	.37	.32	.43	.37	.32	.42	.36	.32	.30
9.0	.43	.35	.29	.42	.34	.29	.41	.34	.29	.40	.33	.29	.39	.33	.29	.27
10.0	.40	.32	.26	.39	.31	.26	.38	.31	.26	.37	.31	.26	.36	.30	.26	.24



C Range: 0 - 360DEG  
 C Interval: 22.5DEG  
 Test Speed: HIGH  
 Temperature:24.9DEG  
 Operators:Water  
 Test Date:2023-09-08

γ Range: 0 - 180DEG  
 γ Interval: 1.0DEG  
 Test System:EVERFINE GO-R5000\_V2 SYSTEM V2.00.446  
 Humidity:50%  
 Test Distance:2.513m [K=1.0000]  
 Remarks: Model No: UCL-31B-18G

WEC AND CCEC

Test:U:120.08V I:0.0708A P:8.1900W PF:0.9633 Freq:60.00Hz		
Lamp Flux:613.202x1 lm		
NAME: ASD-UCS-18D8CC	TYPE: N/A	WEIGHT: N/A
SPEC.: N/A	DIM.: N/A	SERIAL No.: N/A
MFR.: ASD Lighting Corp	SUR.: N/A	Shielding Angle: N/A

ρcc	80%			70%			50%			30%			10%			0
ρw	50%	30%	10%	50%	30%	10%	50%	30%	10%	50%	30%	10%	50%	30%	10%	0
ρfc	20%			20%			20%			20%			20%			0
RCR	RCR:Room Cavity Ratio						Wall Exitance Coefficients(WEC)									
0.0																
1.0	.310	.177	.056	.303	.173	.055	.290	.166	.053	.278	.160	.051	.266	.154	.050	
2.0	.292	.160	.049	.286	.157	.048	.274	.152	.047	.263	.148	.046	.253	.143	.045	
3.0	.270	.144	.043	.264	.142	.043	.254	.138	.042	.244	.134	.041	.236	.130	.040	
4.0	.249	.129	.038	.244	.128	.038	.235	.125	.037	.226	.122	.037	.218	.119	.036	
5.0	.230	.117	.034	.226	.116	.034	.218	.113	.033	.210	.111	.033	.203	.108	.033	
6.0	.213	.107	.031	.210	.106	.030	.202	.104	.030	.196	.102	.030	.189	.100	.030	
7.0	.199	.098	.028	.195	.097	.028	.189	.095	.027	.183	.094	.027	.177	.092	.027	
8.0	.186	.091	.025	.182	.090	.025	.177	.088	.025	.171	.087	.025	.166	.085	.025	
9.0	.174	.084	.023	.171	.083	.023	.166	.082	.023	.161	.081	.023	.156	.079	.023	
10.0	.163	.078	.022	.161	.078	.022	.156	.077	.022	.152	.075	.021	.148	.074	.021	

ρcc	80%			70%			50%			30%			10%			0
ρw	50%	30%	10%	50%	30%	10%	50%	30%	10%	50%	30%	10%	50%	30%	10%	0
ρfc	20%			20%			20%			20%			20%			0
RCR	RCR:Room Cavity Ratio						Ceiling Cavity Exitance Coefficients(CCEC)									
0.0	.191	.191	.191	.163	.163	.163	.112	.112	.112	.064	.064	.064	.020	.020	.020	
1.0	.181	.157	.135	.155	.135	.116	.106	.093	.080	.061	.054	.047	.020	.017	.015	
2.0	.173	.133	.099	.148	.114	.085	.102	.079	.060	.059	.046	.035	.019	.015	.011	
3.0	.165	.115	.075	.142	.099	.065	.097	.069	.046	.056	.040	.027	.018	.013	.009	
4.0	.158	.102	.059	.135	.088	.051	.093	.061	.036	.054	.036	.021	.017	.012	.007	
5.0	.150	.091	.048	.129	.079	.042	.089	.055	.029	.051	.032	.017	.017	.011	.006	
6.0	.143	.083	.040	.123	.072	.035	.085	.050	.025	.049	.030	.015	.016	.010	.005	
7.0	.136	.076	.034	.117	.066	.030	.081	.046	.021	.047	.027	.013	.015	.009	.004	
8.0	.130	.070	.030	.112	.061	.026	.077	.043	.018	.045	.025	.011	.015	.008	.004	
9.0	.124	.065	.026	.107	.057	.023	.074	.040	.016	.043	.024	.010	.014	.008	.003	
10.0	.118	.061	.023	.102	.053	.020	.071	.037	.014	.041	.022	.009	.013	.007	.003	

C Range: 0 - 360DEG  
 C Interval: 22.5DEG  
 Test Speed: HIGH  
 Temperature:24.9DEG  
 Operators:Water  
 Test Date:2023-09-08

γ Range: 0 - 180DEG  
 γ Interval: 1.0DEG  
 Test System:EVERFINE GO-R5000\_V2 SYSTEM V2.00.446  
 Humidity:50%  
 Test Distance:2.513m [K=1.0000]  
 Remarks: Model No: UCL-31B-18G

UGR(Unified Glare Rating) Table

Test:U:120.08V I:0.0708A P:8.1900W PF:0.9633 Freq:60.00Hz										
Lamp Flux:613.202x1 lm										
NAME: ASD-UCS-18D8CC					TYPE: N/A			WEIGHT: N/A		
SPEC.: N/A					DIM.: N/A			SERIAL No.: N/A		
MFR.: ASD Lighting Corp					SUR.: N/A			Shielding Angle: N/A		
ceiling/cavity	0.7	0.7	0.5	0.5	0.3	0.7	0.7	0.5	0.5	0.3
walls	0.5	0.3	0.5	0.3	0.3	0.5	0.3	0.5	0.3	0.3
working plane	0.2	0.2	0.2	0.2	0.2	0.2	0.2	0.2	0.2	0.2
Room dimensions	Viewed crosswise					Viewed endwise				
x = 2H y = 2H	23.8	25.3	24.1	25.5	25.7	23.7	25.2	23.9	25.4	25.6
3H	25.4	26.8	25.7	27.0	27.3	25.2	26.6	25.5	26.9	27.1
4H	26.0	27.3	26.3	27.6	27.8	25.9	27.2	26.2	27.5	27.7
6H	26.4	27.7	26.8	28.0	28.3	26.3	27.6	26.7	27.9	28.2
8H	26.6	27.8	26.9	28.1	28.4	26.5	27.7	26.9	28.0	28.3
12H	26.7	27.8	27.0	28.1	28.4	26.6	27.8	27.0	28.1	28.4
4H 2H	24.4	25.7	24.7	26.0	26.3	24.3	25.6	24.6	25.9	26.1
3H	26.1	27.3	26.5	27.6	27.9	26.0	27.2	26.4	27.5	27.8
4H	26.9	28.0	27.3	28.3	28.6	26.8	27.8	27.1	28.2	28.5
6H	27.5	28.4	27.9	28.8	29.1	27.4	28.3	27.8	28.7	29.0
8H	27.7	28.6	28.1	28.9	29.3	27.6	28.5	28.0	28.8	29.2
12H	27.8	28.6	28.2	29.0	29.4	27.7	28.6	28.2	28.9	29.3
8H 4H	27.1	28.0	27.6	28.4	28.8	27.0	27.9	27.4	28.3	28.7
6H	27.9	28.6	28.3	29.0	29.4	27.8	28.5	28.2	28.9	29.3
8H	28.2	28.8	28.6	29.2	29.7	28.1	28.7	28.5	29.1	29.6
12H	28.4	28.9	28.8	29.4	29.9	28.3	28.9	28.8	29.3	29.8
12H 4H	27.2	28.0	27.6	28.4	28.8	27.0	27.9	27.5	28.2	28.7
6H	27.9	28.6	28.4	29.0	29.5	27.8	28.5	28.3	28.9	29.4
8H	28.3	28.8	28.7	29.3	29.7	28.2	28.7	28.6	29.2	29.7
Variations with the observer position at spacings(CIE Pub.117):										
S = 1.0H	+ 0.1 / - 0.2					+ 0.1 / - 0.2				
1.5H	+ 0.2 / - 0.3					+ 0.1 / - 0.3				
2.0H	+ 0.2 / - 0.3					+ 0.2 / - 0.2				

CIE Pub.117, 613.2 lm Total Lamp Luminous Flux Correct (8log(F/F0) = -1.7)  
 Area: 0.013423 m2

C Range: 0 - 360DEG  
 C Interval: 22.5DEG  
 Test Speed: HIGH  
 Temperature:24.9DEG  
 Operators:Water  
 Test Date:2023-09-08

γ Range: 0 - 180DEG  
 γ Interval: 1.0DEG  
 Test System:EVERFINE GO-R5000\_V2 SYSTEM V2.00.446  
 Humidity:50%  
 Test Distance:2.513m [K=1.0000]  
 Remarks: Model No: UCL-31B-18G

**UTILIZATION FACTORS TABLE**

Test:U:120.08V I:0.0708A P:8.1900W PF:0.9633 Freq:60.00Hz Lamp Flux:613.202x1 lm		
NAME: ASD-UCS-18D8CC	TYPE: N/A	WEIGHT: N/A
SPEC.: N/A	DIM.: N/A	SERIAL No.: N/A
MFR.: ASD Lighting Corp	SUR.: N/A	Shielding Angle: N/A

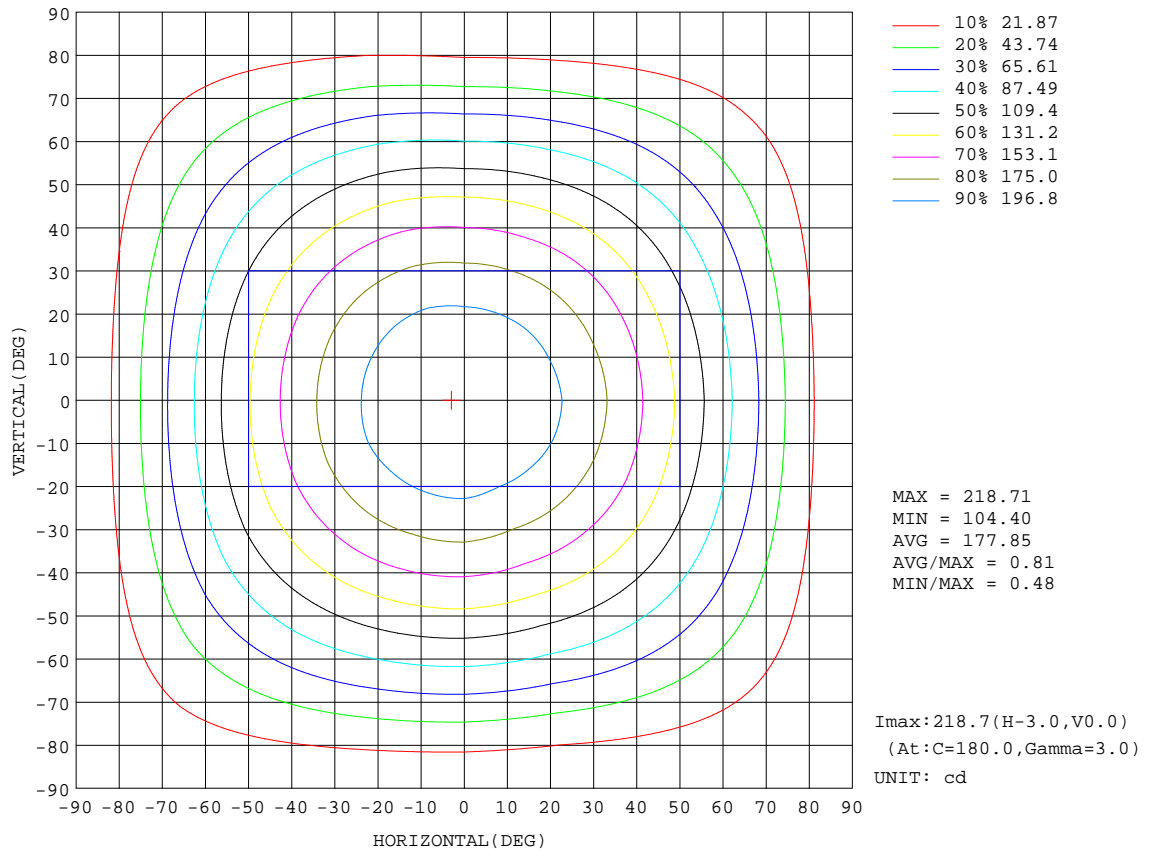
REFLECTANCE										
Ceiling	0.8	0.8	0.8	0.7	0.7	0.7	0.5	0.5	0.5	0
Walls	0.7	0.5	0.3	0.7	0.5	0.3	0.7	0.5	0.3	0
Working plane	0.2	0.2	0.2	0.2	0.2	0.2	0.2	0.2	0.2	0
ROOM INDEX	UTILIZATION FACTORS(PERCENT) $k(RI) \times RCR = 5$									
k = 0.60	58	46	39	57	46	39	56	45	39	32
0.80	68	56	49	67	56	48	65	55	48	41
1.00	76	65	58	75	64	57	73	66	57	50
1.25	83	73	65	82	72	65	79	70	64	57
1.50	88	78	71	86	77	71	83	75	70	62
2.00	95	86	80	93	85	79	90	83	78	70
2.50	99	91	85	97	90	84	93	87	82	74
3.00	102	95	90	100	94	89	96	91	86	78
4.00	106	100	96	104	99	94	100	95	92	83
5.00	109	104	100	106	102	98	102	98	95	86
ROOM INDEX	UF(total)									Direct
According to DIN EN 13032-2 2004			Suspended				SHRNOM = 1.25			

C Range: 0 - 360DEG  
 C Interval: 22.5DEG  
 Test Speed: HIGH  
 Temperature:24.9DEG  
 Operators:Water  
 Test Date:2023-09-08

$\gamma$  Range: 0 - 180DEG  
 $\gamma$  Interval: 1.0DEG  
 Test System:EVERFINE GO-R5000\_V2 SYSTEM V2.00.446  
 Humidity:50%  
 Test Distance:2.513m [K=1.0000]  
 Remarks: Model No: UCL-31B-18G

**ISOCANDELA DIAGRAM**

Test:U:120.08V I:0.0708A P:8.1900W PF:0.9633 Freq:60.00Hz Lamp Flux:613.202x1 lm		
NAME: ASD-UCS-18D8CC	TYPE: N/A	WEIGHT: N/A
SPEC.: N/A	DIM.: N/A	SERIAL No.: N/A
MFR.: ASD Lighting Corp	SUR.: N/A	Shielding Angle: N/A



C Range: 0 - 360DEG  
 C Interval: 22.5DEG  
 Test Speed: HIGH  
 Temperature:24.9DEG  
 Operators:Water  
 Test Date:2023-09-08

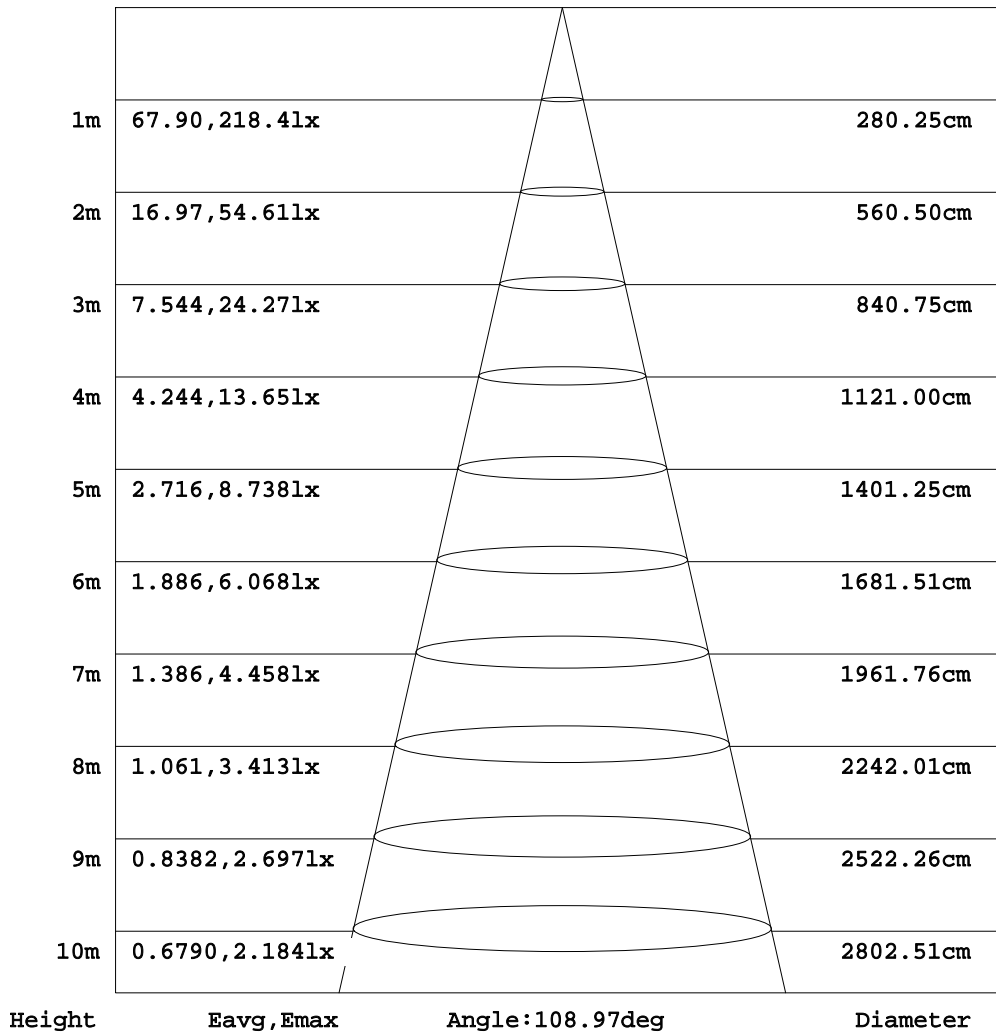
γ Range: 0 - 180DEG  
 γ Interval: 1.0DEG  
 Test System:EVERFINE GO-R5000\_V2 SYSTEM V2.00.446  
 Humidity:50%  
 Test Distance:2.513m [K=1.0000]  
 Remarks: Model No: UCL-31B-18G



**AAI Figure**

Test:U:120.08V I:0.0708A P:8.1900W PF:0.9633 Freq:60.00Hz Lamp Flux:613.202x1 lm		
NAME: ASD-UCS-18D8CC	TYPE: N/A	WEIGHT: N/A
SPEC.: N/A	DIM.: N/A	SERIAL No.: N/A
MFR.: ASD Lighting Corp	SUR.: N/A	Shielding Angle: N/A

Flux out:435.1 lm



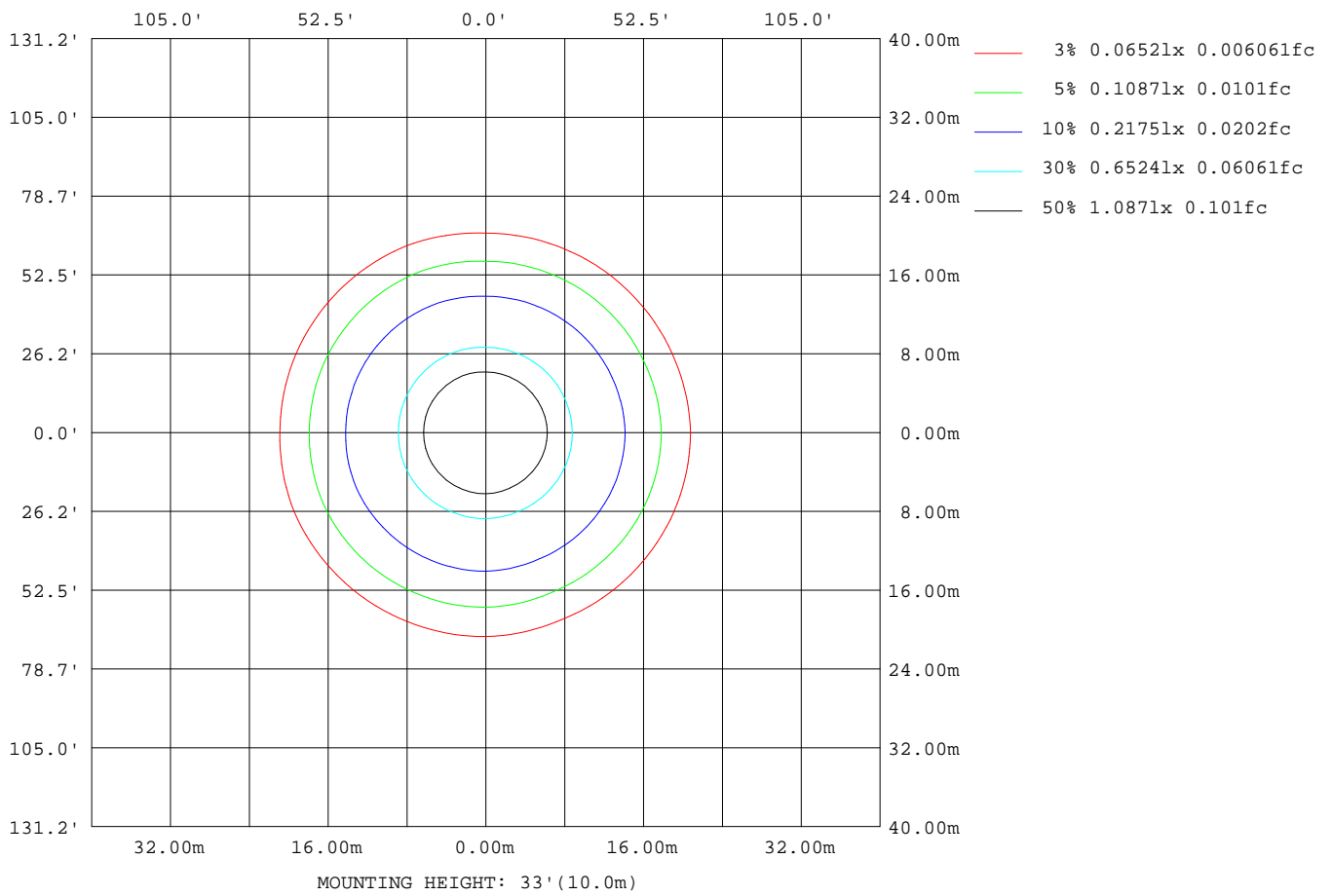
Note:The Curves indicate the illuminated area and the average illumination when the luminaire is at different distance.

C Range: 0 - 360DEG  
C Interval: 22.5DEG  
Test Speed: HIGH  
Temperature:24.9DEG  
Operators:Water  
Test Date:2023-09-08

γ Range: 0 - 180DEG  
γ Interval: 1.0DEG  
Test System:EVERFINE GO-R5000\_V2 SYSTEM V2.00.446  
Humidity:50%  
Test Distance:2.513m [K=1.0000]  
Remarks: Model No: UCL-31B-18G

**ISOLUX DIAGRAM**

Test:U:120.08V I:0.0708A P:8.1900W PF:0.9633 Freq:60.00Hz Lamp Flux:613.202x1 lm		
NAME: ASD-UCS-18D8CC	TYPE: N/A	WEIGHT: N/A
SPEC.: N/A	DIM.: N/A	SERIAL No.: N/A
MFR.: ASD Lighting Corp	SUR.: N/A	Shielding Angle: N/A



C Range: 0 - 360DEG  
 C Interval: 22.5DEG  
 Test Speed: HIGH  
 Temperature:24.9DEG  
 Operators:Water  
 Test Date:2023-09-08

$\gamma$  Range: 0 - 180DEG  
 $\gamma$  Interval: 1.0DEG  
 Test System:EVERFINE GO-R5000\_V2 SYSTEM V2.00.446  
 Humidity:50%  
 Test Distance:2.513m [K=1.0000]  
 Remarks: Model No: UCL-31B-18G

LED Avg.L Report

Test:U:120.08V I:0.0708A P:8.1900W PF:0.9633 Freq:60.00Hz Lamp Flux:613.202x1 lm		
NAME: ASD-UCS-18D8CC	TYPE: N/A	WEIGHT: N/A
SPEC.: N/A	DIM.: N/A	SERIAL No.: N/A
MFR.: ASD Lighting Corp	SUR.: N/A	Shielding Angle: N/A

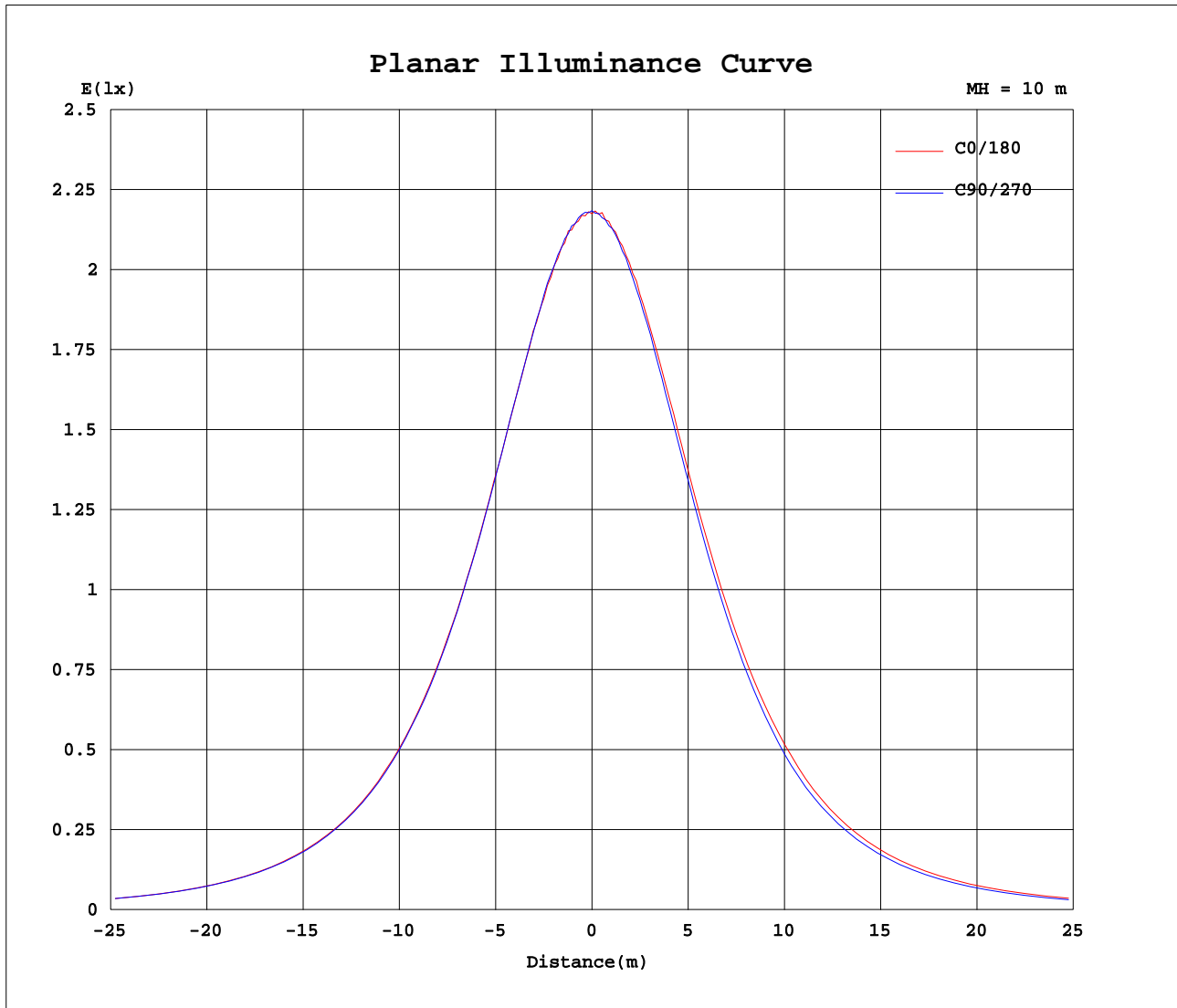
AvgL	cd/m2
L_0~180(65)av	13776
L_0~180(75)av	12356
L_0~180(85)av	9973
L_90~270(65)av	12929
L_90~270(75)av	11286
L_90~270(85)av	7691
L_45(65)av	13387
L_45(75)av	11863
L_45(85)av	8678

Standard: GB/T 29293-2012

C Range: 0 - 360DEG  
 C Interval: 22.5DEG  
 Test Speed: HIGH  
 Temperature:24.9DEG  
 Operators:Water  
 Test Date:2023-09-08

γ Range: 0 - 180DEG  
 γ Interval: 1.0DEG  
 Test System:EVERFINE GO-R5000\_V2 SYSTEM V2.00.446  
 Humidity:50%  
 Test Distance:2.513m [K=1.0000]  
 Remarks: Model No: UCL-31B-18G

Planar Illuminance Curve



C Range: 0 - 360DEG  
 C Interval: 22.5DEG  
 Test Speed: HIGH  
 Temperature: 24.9DEG  
 Operators: Water  
 Test Date: 2023-09-08

γ Range: 0 - 180DEG  
 γ Interval: 1.0DEG  
 Test System: EVERFINE GO-R5000\_V2 SYSTEM V2.00.446  
 Humidity: 50%  
 Test Distance: 2.513m [K=1.0000]  
 Remarks: Model No: UCL-31B-18G

LUMINOUS DISTRIBUTION INTENSITY DATA

Test:U:120.08V I:0.0708A P:8.1900W PF:0.9633 Freq:60.00Hz Lamp Flux:613.202x1 lm		
NAME: ASD-UCS-18D8CC	TYPE: N/A	WEIGHT: N/A
SPEC.: N/A	DIM.: N/A	SERIAL No.: N/A
MFR.: ASD Lighting Corp	SUR.: N/A	Shielding Angle: N/A

Table--1

UNIT: cd

C(DEG) γ (DEG)	0	22.5	45	67.5	90	112.5	135	157.5	180	202.5	225	247.5	270	292.5	315	337.5			
0	218	218	218	218	218	218	218	218	218	218	218	218	218	218	218	218			
5	217	217	217	217	216	217	216	217	218	218	218	217	216	217	216	216			
10	213	213	213	213	214	213	214	215	214	214	214	214	213	213	213	213			
15	209	208	209	208	208	209	209	210	210	210	210	209	207	207	207	207			
20	201	201	201	200	201	201	202	204	203	203	203	202	199	199	199	200			
25	193	192	192	191	192	193	193	195	195	195	194	193	190	190	190	191			
30	182	181	180	179	181	182	183	185	185	185	184	182	179	179	179	180			
35	170	170	169	167	169	170	172	174	173	173	172	170	166	167	167	168			
40	157	156	155	153	155	156	158	161	160	160	159	157	153	153	154	155			
45	143	142	141	139	141	142	144	146	147	145	145	142	137	138	139	141			
50	128	127	125	123	126	127	129	131	130	130	128	126	121	121	123	124			
55	112	110	109	107	110	111	113	115	114	113	111	109	105	105	107	108			
60	95.0	93.9	92.4	90.7	93.2	94.2	96.1	98.2	96.8	96.4	94.6	92.5	87.5	87.9	89.5	91.2			
65	77.2	76.5	75.3	73.6	76.5	77.5	79.2	81.0	79.1	78.3	76.9	74.8	70.2	71.1	72.4	74.1			
70	59.4	58.9	57.9	56.5	59.3	60.2	61.7	63.3	61.5	60.9	59.4	57.6	52.8	53.3	54.8	56.3			
75	41.8	41.5	40.7	39.7	42.5	43.3	44.5	45.8	44.0	43.3	41.9	40.3	36.0	36.6	37.8	39.1			
80	25.5	25.3	24.7	24.0	26.6	27.1	28.2	29.2	27.7	26.9	25.5	24.1	20.1	20.6	21.6	22.9			
85	10.7	10.6	10.1	9.60	12.1	12.5	13.2	14.0	12.6	11.9	10.4	9.06	5.92	6.10	6.91	8.44			
90	0.04	0.04	0.03	0.03	0.31	0.57	1.05	1.00	0.19	0.11	0.01	0.00	0.01	0.01	0.00	0.01			
95	0.04	0.05	0.07	0.04	0.03	0.03	0.03	0.04	0.01	0.01	0.01	0.01	0.01	0.01	0.01	0.01			
100	0.05	0.06	0.07	0.06	0.05	0.06	0.07	0.06	0.02	0.02	0.02	0.02	0.02	0.02	0.02	0.02			
105	0.06	0.06	0.07	0.06	0.06	0.06	0.06	0.06	0.03	0.02	0.02	0.02	0.02	0.02	0.03	0.02			
110	0.06	0.07	0.07	0.07	0.06	0.07	0.07	0.06	0.03	0.03	0.03	0.03	0.03	0.03	0.03	0.03			
115	0.07	0.08	0.08	0.07	0.07	0.07	0.08	0.07	0.04	0.04	0.04	0.04	0.04	0.04	0.04	0.04			
120	0.08	0.09	0.09	0.09	0.08	0.09	0.09	0.08	0.05	0.05	0.05	0.05	0.05	0.05	0.05	0.05			
125	0.10	0.11	0.11	0.11	0.10	0.11	0.10	0.10	0.07	0.06	0.06	0.06	0.06	0.06	0.06	0.06			
130	0.12	0.13	0.13	0.13	0.13	0.13	0.13	0.12	0.08	0.07	0.07	0.07	0.07	0.08	0.07	0.08			
135	0.15	0.16	0.16	0.16	0.16	0.16	0.16	0.14	0.09	0.09	0.09	0.09	0.09	0.09	0.09	0.09			
140	0.20	0.21	0.22	0.21	0.21	0.21	0.20	0.19	0.10	0.10	0.10	0.10	0.10	0.10	0.10	0.11			
145	0.24	0.26	0.27	0.28	0.27	0.27	0.25	0.23	0.11	0.11	0.12	0.12	0.12	0.12	0.12	0.12			
150	0.29	0.30	0.32	0.32	0.32	0.31	0.30	0.28	0.12	0.12	0.13	0.13	0.14	0.13	0.13	0.14			
155	0.33	0.35	0.36	0.36	0.36	0.35	0.34	0.33	0.14	0.14	0.15	0.15	0.15	0.16	0.15	0.16			
160	0.36	0.37	0.37	0.39	0.38	0.38	0.37	0.36	0.17	0.17	0.17	0.17	0.17	0.17	0.17	0.18			
165	0.35	0.36	0.37	0.38	0.38	0.38	0.37	0.35	0.19	0.19	0.19	0.19	0.19	0.19	0.18	0.20			
170	0.34	0.34	0.35	0.34	0.35	0.35	0.34	0.34	0.21	0.21	0.21	0.20	0.20	0.20	0.20	0.21			
175	0.32	0.32	0.32	0.32	0.31	0.32	0.32	0.32	0.25	0.25	0.24	0.23	0.23	0.22	0.23	0.25			
180	0.28	0.28	0.27	0.26	0.27	0.27	0.28	0.29	0.29	0.28	0.28	0.27	0.27	0.27	0.27	0.28			

C Range: 0 - 360DEG  
 C Interval: 22.5DEG  
 Test Speed: HIGH  
 Temperature:24.9DEG  
 Operators:Water  
 Test Date:2023-09-08

γ Range: 0 - 180DEG  
 γ Interval: 1.0DEG  
 Test System:EVERFINE GO-R5000\_V2 SYSTEM V2.00.446  
 Humidity:50%  
 Test Distance:2.513m [K=1.0000]  
 Remarks: Model No: UCL-31B-18G