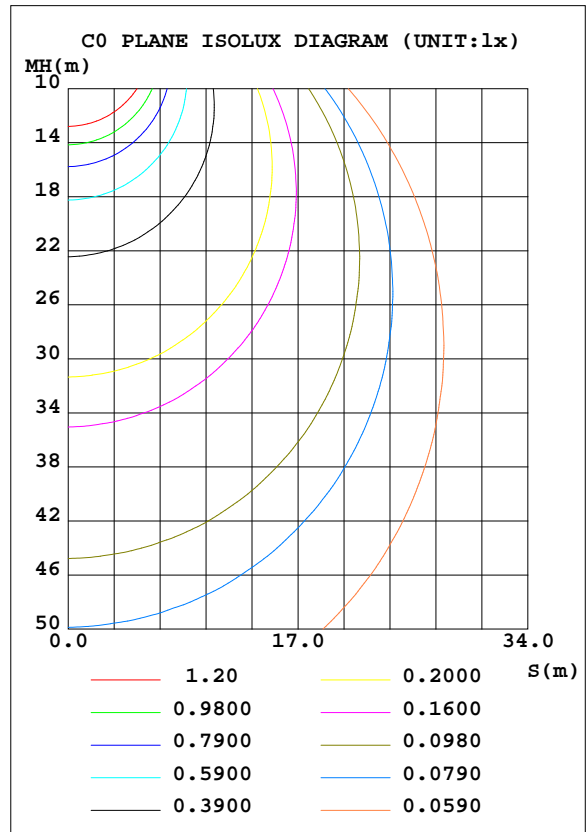
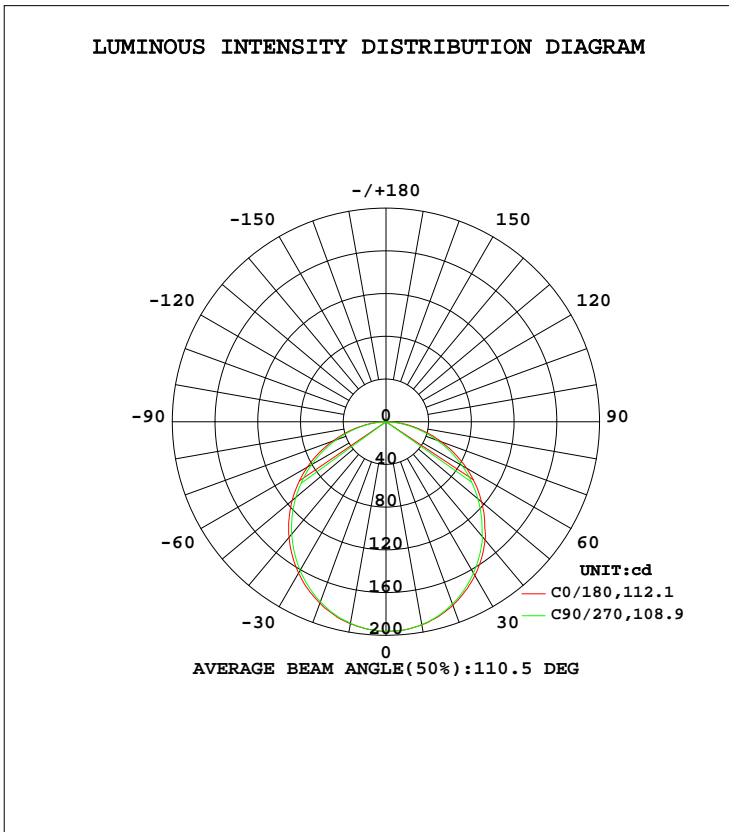


LUMINAIRE PHOTOMETRIC TEST REPORT

Test:U:120.05V I:0.0713A P:8.2600W PF:0.9650 Freq:60.00Hz Lamp Flux:551.427x1 lm		
NAME: ASD-UCS-18D8CC	TYPE: N/A	WEIGHT: N/A
SPEC.: N/A	DIM.: N/A	SERIAL No.: N/A
MFR.: ASD Lighting Corp	SUR.: N/A	Shielding Angle: N/A

DATA OF LAMP		PHOTOMETRIC DATA Eff: 66.76 lm/W			
MODEL	ASD-UCS-18D8CC	I _{max} (cd)	196.6	S/MH(C0/180)	1.26
NOMINAL POWER(W)	8	LOR(%)	100.0	S/MH(C90/270)	1.24
RATED VOLTAGE(V)	120	TOTAL FLUX(lm)	551.43	η UP, DN(C0-180)	0.1,49.5
NOMINAL FLUX(lm)	551.427	CIE CLASS	DIRECT	η UP, DN(C180-360)	0.0,50.4
LAMPS INSIDE	1	η up(%)	0.1	CIBSE SHR NOM	1.25
TEST VOLTAGE(V)	120	η down(%)	99.9	CIBSE SHR MAX	1.35



C Range: 0 - 360DEG
 C Interval: 22.5DEG
 Test Speed: HIGH
 Temperature:24.9DEG
 Operators:Water
 Test Date:2023-09-08

γ Range: 0 - 180DEG
 γ Interval: 1.0DEG
 Test System:EVERFINE GO-R5000_V2 SYSTEM V2.00.446
 Humidity:50%
 Test Distance:2.513m [K=1.0000]
 Remarks: Model No: UCL-31B-18G

ZONAL FLUX DIAGRAM

ZONAL FLUX DIAGRAM:

γ	C0	C45	C90	C135	C180	C225	C270	C315	γ	Φ zone	Φ total	%lum, lamp
10	192.0	191.8	191.7	192.4	193.0	193.2	192.9	192.8	0- 10	18.56	18.56	3.37,3.37
20	180.9	180.2	179.5	180.9	183.0	182.8	181.7	181.8	10- 20	52.98	71.54	13,13
30	163.7	161.9	160.9	163.2	166.3	165.7	163.8	164.2	20- 30	79.81	151.3	27.4,27.4
40	141.1	139.1	137.3	140.2	144.4	143.0	140.3	141.3	30- 40	95.59	246.9	44.8,44.8
50	114.6	112.3	110.2	113.2	116.9	115.1	112.4	113.9	40- 50	98.29	345.2	62.6,62.6
60	85.12	82.74	80.55	83.44	87.12	85.01	82.36	84.19	50- 60	88.42	433.6	78.6,78.6
70	53.06	51.53	49.65	51.83	55.33	53.44	51.12	53.03	60- 70	67.44	501.1	90.9,90.9
80	22.77	21.88	20.72	22.13	24.82	23.08	21.31	22.74	70- 80	39.17	540.3	98,98
90	0.0487	0.0407	0.0281	0.0451	0.2264	0.0050	0.0026	0.0037	80- 90	10.60	550.9	99.9,99.9
100	0.0440	0.0603	0.0459	0.0559	0.0170	0.0141	0.0127	0.0131	90-100	0.0277	550.9	99.9,99.9
110	0.0543	0.0609	0.0565	0.0602	0.0295	0.0277	0.0266	0.0254	100-110	0.0392	550.9	99.9,99.9
120	0.0747	0.0786	0.0785	0.0801	0.0447	0.0433	0.0413	0.0416	110-120	0.0502	551.0	99.9,99.9
130	0.1106	0.1150	0.1211	0.1188	0.0672	0.0644	0.0611	0.0621	120-130	0.0666	551.0	99.9,99.9
140	0.1775	0.1936	0.1963	0.1898	0.0899	0.0890	0.0875	0.0875	130-140	0.0859	551.1	99.9,99.9
150	0.2565	0.2836	0.2936	0.2747	0.1109	0.1183	0.1209	0.1151	140-150	0.1059	551.2	100,100
160	0.3210	0.3355	0.3429	0.3350	0.1540	0.1555	0.1533	0.1460	150-160	0.1025	551.3	100,100
170	0.3005	0.3110	0.3103	0.3062	0.1920	0.1825	0.1796	0.1756	160-170	0.0701	551.4	100,100
180	0.2542	0.2437	0.2337	0.2470	0.2550	0.2520	0.2353	0.2374	170-180	0.0234	551.4	100,100
DEG	LUMINOUS INTENSITY:cd									UNIT:lm		

Conical surface Flux(90deg): 296.55 lm

%lum = 53.8%
 %lamp = 53.8%

Conical surface Flux(120deg): 433.65 lm

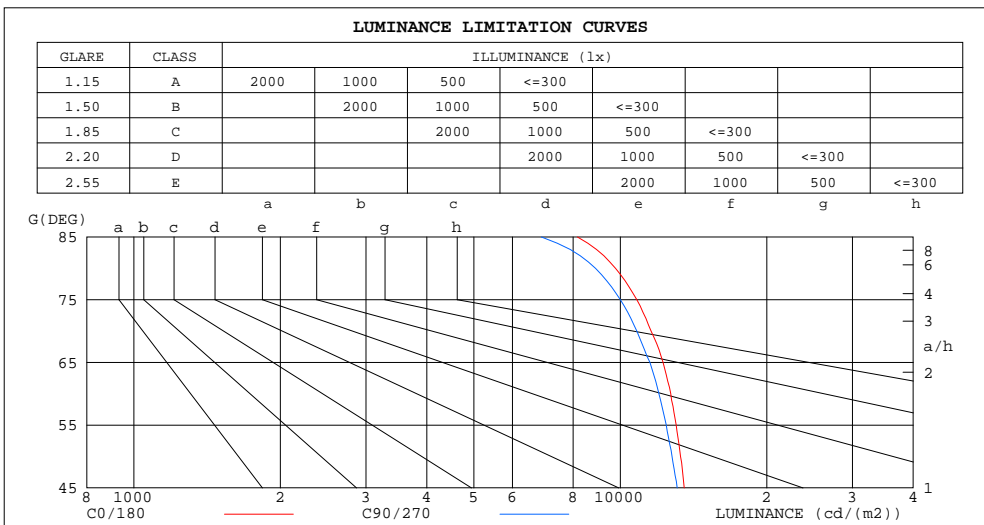
%lum = 78.6%
 %lamp = 78.6%

C Range: 0 - 360DEG
 C Interval: 22.5DEG
 Test Speed: HIGH
 Temperature:24.9DEG
 Operators:Water
 Test Date:2023-09-08

γ Range: 0 - 180DEG
 γ Interval: 1.0DEG
 Test System:EVERFINE GO-R5000_V2 SYSTEM V2.00.446
 Humidity:50%
 Test Distance:2.513m [K=1.0000]
 Remarks: Model No: UCL-31B-18G

LUMINANCE LIMITATION CURVES

Test:U:120.05V I:0.0713A P:8.2600W PF:0.9650 Freq:60.00Hz Lamp Flux:551.427x1 lm		
NAME: ASD-UCS-18D8CC	TYPE: N/A	WEIGHT: N/A
SPEC.: N/A	DIM.: N/A	SERIAL No.: N/A
MFR.: ASD Lighting Corp	SUR.: N/A	Shielding Angle: N/A



LUMINANCE cd/(m2)		
G (DEG)	C0/180	C90/270
85	8164	6885
80	9778	8891
75	10812	10001
70	11568	10816
65	12241	11502
60	12692	12002
55	13023	12426
50	13295	12776
45	13530	13085

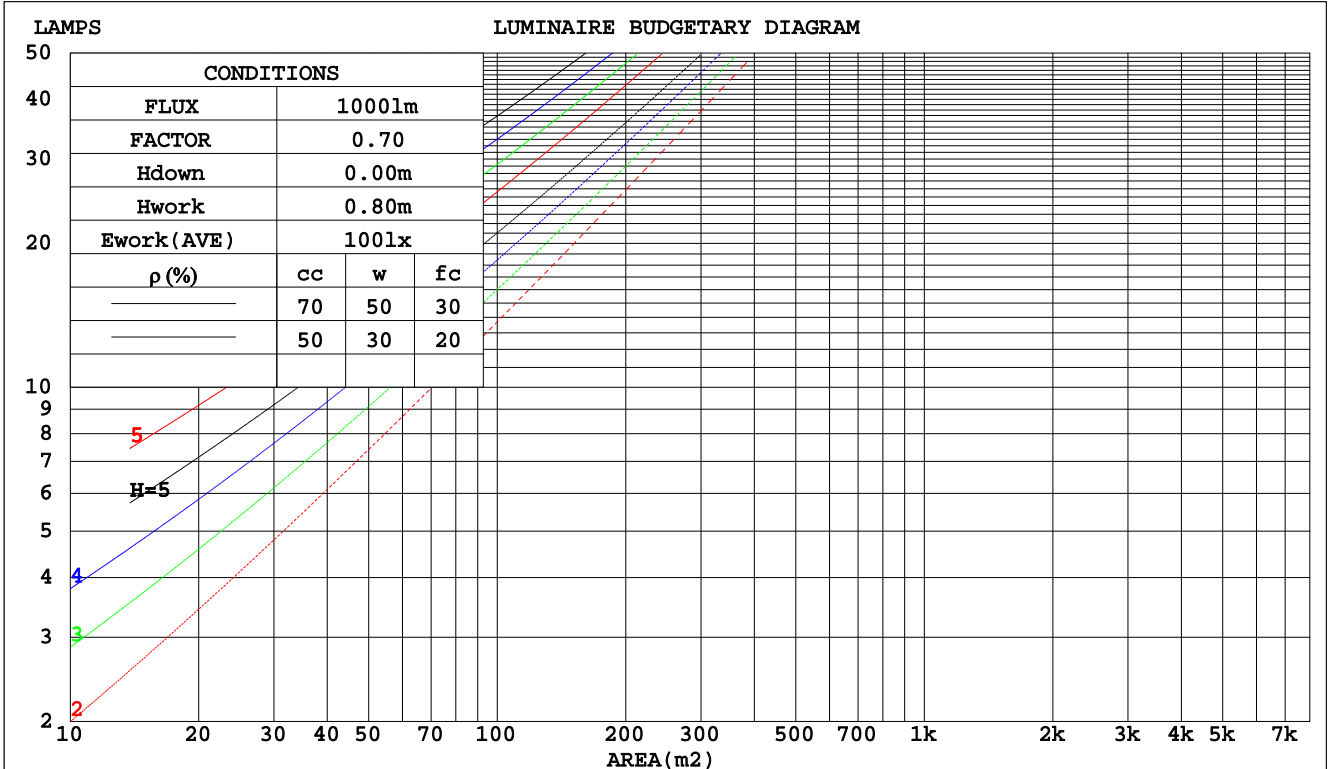
C Range: 0 - 360DEG
 C Interval: 22.5DEG
 Test Speed: HIGH
 Temperature: 24.9DEG
 Operators: Water
 Test Date: 2023-09-08

γ Range: 0 - 180DEG
 γ Interval: 1.0DEG
 Test System: EVERFINE GO-R5000_V2 SYSTEM V2.00.446
 Humidity: 50%
 Test Distance: 2.513m [K=1.0000]
 Remarks: Model No: UCL-31B-18G

CU AND LUMINAIRE BUDGETARY ESTIMATE DIAGRAM

Test:U:120.05V I:0.0713A P:8.2600W PF:0.9650 Freq:60.00Hz Lamp Flux:551.427x1 lm		
NAME: ASD-UCS-18D8CC	TYPE: N/A	WEIGHT: N/A
SPEC.: N/A	DIM.: N/A	SERIAL No.: N/A
MFR.: ASD Lighting Corp	SUR.: N/A	Shielding Angle: N/A

pcc	80%			70%			50%			30%			10%			0
	50%	30%	10%	50%	30%	10%	50%	30%	10%	50%	30%	10%	50%	30%	10%	0
pw																0
pfc	20%			20%			20%			20%			20%			0
RCR	RCR:Room Cavity Ratio Coefficients of Utilization(CU)															
0.0	1.19	1.19	1.19	1.16	1.16	1.16	1.11	1.11	1.11	1.06	1.06	1.06	1.02	1.02	1.02	.00
1.0	1.04	.00	.96	1.02	.98	.94	.97	.94	.91	.93	.91	.88	.90	.88	.86	.83
2.0	.90	.84	.78	.89	.82	.77	.85	.80	.75	.82	.77	.73	.79	.75	.72	.69
3.0	.79	.71	.65	.78	.70	.64	.75	.68	.63	.72	.66	.62	.69	.65	.61	.58
4.0	.70	.61	.55	.69	.61	.54	.66	.59	.54	.64	.58	.53	.62	.56	.52	.50
5.0	.63	.54	.47	.62	.53	.47	.59	.52	.46	.57	.51	.46	.56	.50	.45	.43
6.0	.57	.48	.41	.56	.47	.41	.54	.46	.41	.52	.45	.40	.50	.44	.40	.38
7.0	.51	.42	.36	.50	.42	.36	.49	.41	.36	.47	.41	.36	.46	.40	.35	.33
8.0	.47	.38	.32	.46	.38	.32	.45	.37	.32	.43	.37	.32	.42	.36	.32	.30
9.0	.43	.35	.29	.42	.34	.29	.41	.34	.29	.40	.33	.29	.39	.33	.29	.27
10.0	.40	.32	.26	.39	.31	.26	.38	.31	.26	.37	.31	.26	.36	.30	.26	.24



C Range: 0 - 360DEG
 C Interval: 22.5DEG
 Test Speed: HIGH
 Temperature:24.9DEG
 Operators:Water
 Test Date:2023-09-08

γ Range: 0 - 180DEG
 γ Interval: 1.0DEG
 Test System:EVERFINE GO-R5000_V2 SYSTEM V2.00.446
 Humidity:50%
 Test Distance:2.513m [K=1.0000]
 Remarks: Model No: UCL-31B-18G

WEC AND CCEC

Test:U:120.05V I:0.0713A P:8.2600W PF:0.9650 Freq:60.00Hz		
Lamp Flux:551.427x1 lm		
NAME: ASD-UCS-18D8CC	TYPE: N/A	WEIGHT: N/A
SPEC.: N/A	DIM.: N/A	SERIAL No.: N/A
MFR.: ASD Lighting Corp	SUR.: N/A	Shielding Angle: N/A

ρcc	80%			70%			50%			30%			10%			0
ρw	50%	30%	10%	50%	30%	10%	50%	30%	10%	50%	30%	10%	50%	30%	10%	0
ρfc	20%			20%			20%			20%			20%			0
RCR	RCR:Room Cavity Ratio						Wall Exitance Coefficients(WEC)									
0.0																
1.0	.310	.176	.056	.303	.173	.055	.290	.166	.053	.277	.160	.051	.266	.154	.050	
2.0	.292	.160	.049	.285	.157	.048	.274	.152	.047	.263	.147	.046	.253	.143	.045	
3.0	.270	.144	.043	.264	.142	.043	.254	.138	.042	.244	.134	.041	.235	.130	.040	
4.0	.249	.129	.038	.244	.128	.038	.235	.125	.037	.226	.122	.037	.218	.119	.036	
5.0	.230	.117	.034	.226	.116	.034	.218	.113	.033	.210	.111	.033	.203	.108	.033	
6.0	.213	.107	.031	.210	.106	.030	.202	.104	.030	.195	.102	.030	.189	.100	.030	
7.0	.199	.098	.028	.195	.097	.028	.189	.095	.027	.183	.094	.027	.177	.092	.027	
8.0	.185	.091	.025	.182	.090	.025	.177	.088	.025	.171	.087	.025	.166	.085	.025	
9.0	.174	.084	.023	.171	.083	.023	.166	.082	.023	.161	.081	.023	.156	.079	.023	
10.0	.163	.078	.022	.161	.078	.022	.156	.077	.022	.152	.075	.021	.148	.074	.021	

ρcc	80%			70%			50%			30%			10%			0
ρw	50%	30%	10%	50%	30%	10%	50%	30%	10%	50%	30%	10%	50%	30%	10%	0
ρfc	20%			20%			20%			20%			20%			0
RCR	RCR:Room Cavity Ratio						Ceiling Cavity Exitance Coefficients(CCEC)									
0.0	.191	.191	.191	.163	.163	.163	.112	.112	.112	.064	.064	.064	.020	.020	.020	
1.0	.181	.157	.135	.155	.135	.116	.106	.093	.080	.061	.054	.047	.020	.017	.015	
2.0	.173	.133	.099	.148	.114	.085	.102	.079	.060	.059	.046	.035	.019	.015	.011	
3.0	.165	.115	.075	.142	.099	.065	.097	.069	.046	.056	.040	.027	.018	.013	.009	
4.0	.158	.102	.059	.135	.088	.051	.093	.061	.036	.054	.036	.021	.017	.012	.007	
5.0	.150	.091	.048	.129	.079	.042	.089	.055	.029	.051	.032	.017	.017	.011	.006	
6.0	.143	.083	.040	.123	.072	.035	.085	.050	.025	.049	.030	.015	.016	.010	.005	
7.0	.136	.076	.034	.117	.066	.030	.081	.046	.021	.047	.027	.013	.015	.009	.004	
8.0	.130	.070	.030	.112	.061	.026	.077	.043	.018	.045	.025	.011	.015	.008	.004	
9.0	.124	.065	.026	.106	.057	.023	.074	.040	.016	.043	.024	.010	.014	.008	.003	
10.0	.118	.061	.023	.102	.053	.020	.071	.037	.014	.041	.022	.009	.013	.007	.003	

C Range: 0 - 360DEG
 C Interval: 22.5DEG
 Test Speed: HIGH
 Temperature:24.9DEG
 Operators:Water
 Test Date:2023-09-08

γ Range: 0 - 180DEG
 γ Interval: 1.0DEG
 Test System:EVERFINE GO-R5000_V2 SYSTEM V2.00.446
 Humidity:50%
 Test Distance:2.513m [K=1.0000]
 Remarks: Model No: UCL-31B-18G

UGR(Unified Glare Rating) Table

Test:U:120.05V I:0.0713A P:8.2600W PF:0.9650 Freq:60.00Hz										
Lamp Flux:551.427x1 lm										
NAME: ASD-UCS-18D8CC					TYPE: N/A			WEIGHT: N/A		
SPEC.: N/A					DIM.: N/A			SERIAL No.: N/A		
MFR.: ASD Lighting Corp					SUR.: N/A			Shielding Angle: N/A		
ceiling/cavity	0.7	0.7	0.5	0.5	0.3	0.7	0.7	0.5	0.5	0.3
walls	0.5	0.3	0.5	0.3	0.3	0.5	0.3	0.5	0.3	0.3
working plane	0.2	0.2	0.2	0.2	0.2	0.2	0.2	0.2	0.2	0.2
Room dimensions	Viewed crosswise					Viewed endwise				
x = 2H y = 2H	23.8	25.3	24.1	25.5	25.8	23.6	25.1	23.9	25.3	25.5
3H	25.4	26.8	25.7	27.0	27.2	25.1	26.5	25.4	26.7	26.9
4H	26.0	27.3	26.3	27.6	27.8	25.6	27.0	26.0	27.2	27.5
6H	26.4	27.7	26.8	28.0	28.2	26.1	27.3	26.4	27.6	27.9
8H	26.6	27.8	26.9	28.1	28.4	26.2	27.4	26.5	27.7	28.0
12H	26.6	27.8	27.0	28.1	28.4	26.2	27.4	26.6	27.7	28.0
4H 2H	24.4	25.7	24.7	26.0	26.3	24.2	25.6	24.5	25.8	26.1
3H	26.1	27.3	26.5	27.6	27.9	25.9	27.0	26.2	27.3	27.7
4H	26.9	27.9	27.2	28.3	28.6	26.6	27.7	27.0	28.0	28.3
6H	27.4	28.4	27.9	28.8	29.1	27.1	28.1	27.5	28.4	28.8
8H	27.6	28.5	28.1	28.9	29.3	27.3	28.2	27.7	28.6	28.9
12H	27.8	28.6	28.2	29.0	29.4	27.4	28.2	27.8	28.6	29.0
8H 4H	27.1	28.0	27.5	28.4	28.8	26.9	27.8	27.3	28.1	28.5
6H	27.9	28.6	28.3	29.0	29.4	27.6	28.3	28.0	28.7	29.1
8H	28.1	28.8	28.6	29.2	29.7	27.8	28.5	28.3	28.9	29.3
12H	28.3	28.9	28.8	29.4	29.8	28.0	28.5	28.5	29.0	29.5
12H 4H	27.1	27.9	27.6	28.3	28.7	26.9	27.7	27.3	28.1	28.5
6H	27.9	28.6	28.4	29.0	29.4	27.6	28.3	28.1	28.7	29.2
8H	28.2	28.8	28.7	29.2	29.7	27.9	28.5	28.4	28.9	29.4
Variations with the observer position at spacings(CIE Pub.117):										
S = 1.0H	+ 0.1 / - 0.2					+ 0.2 / - 0.2				
1.5H	+ 0.2 / - 0.3					+ 0.2 / - 0.3				
2.0H	+ 0.2 / - 0.3					+ 0.2 / - 0.3				

CIE Pub.117, 551.4 lm Total Lamp Luminous Flux Correct (8log(F/F0) = -2.1)
 Area: 0.013423 m2

C Range: 0 - 360DEG
 C Interval: 22.5DEG
 Test Speed: HIGH
 Temperature:24.9DEG
 Operators:Water
 Test Date:2023-09-08

γ Range: 0 - 180DEG
 γ Interval: 1.0DEG
 Test System:EVERFINE GO-R5000_V2 SYSTEM V2.00.446
 Humidity:50%
 Test Distance:2.513m [K=1.0000]
 Remarks: Model No: UCL-31B-18G

UTILIZATION FACTORS TABLE

Test:U:120.05V I:0.0713A P:8.2600W PF:0.9650 Freq:60.00Hz Lamp Flux:551.427x1 lm		
NAME: ASD-UCS-18D8CC	TYPE: N/A	WEIGHT: N/A
SPEC.: N/A	DIM.: N/A	SERIAL No.: N/A
MFR.: ASD Lighting Corp	SUR.: N/A	Shielding Angle: N/A

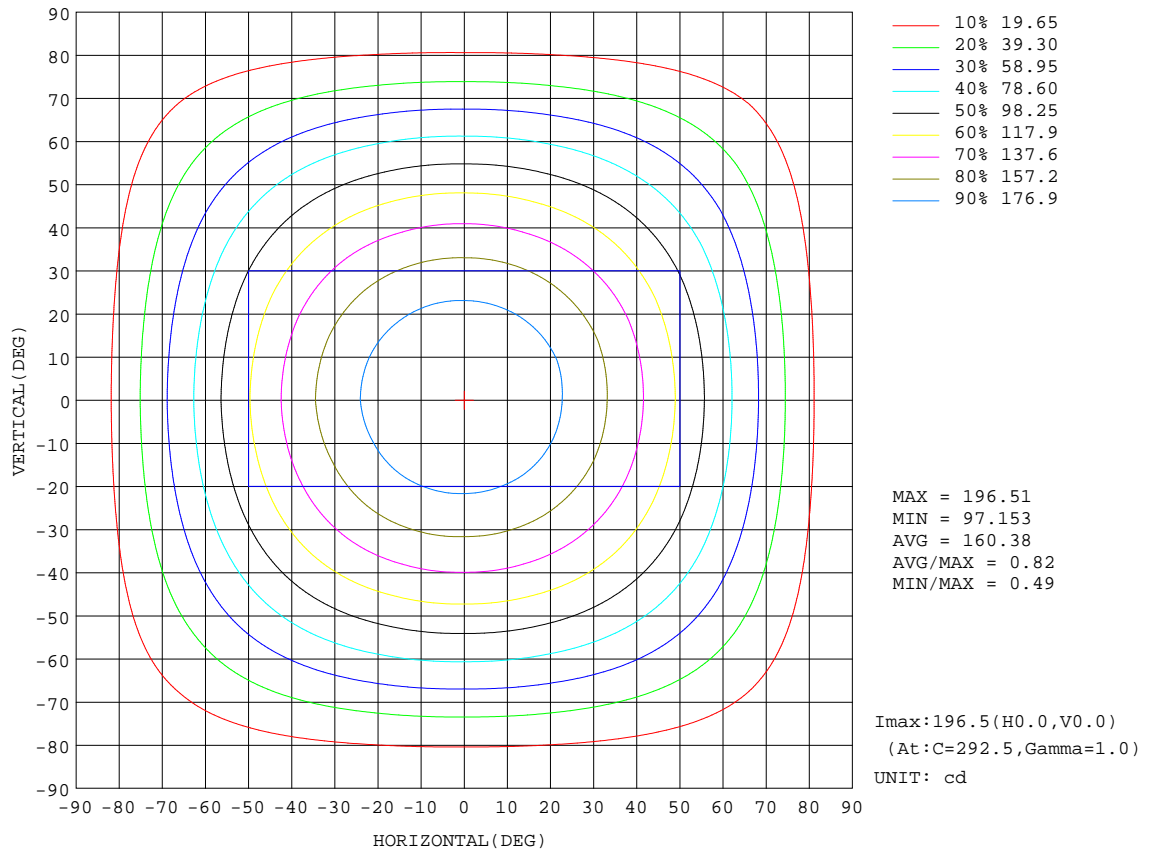
REFLECTANCE										
Ceiling	0.8	0.8	0.8	0.7	0.7	0.7	0.5	0.5	0.5	0
Walls	0.7	0.5	0.3	0.7	0.5	0.3	0.7	0.5	0.3	0
Working plane	0.2	0.2	0.2	0.2	0.2	0.2	0.2	0.2	0.2	0
ROOM INDEX	UTILIZATION FACTORS(PERCENT) $k(RI) \times RCR = 5$									
k = 0.60	58	46	39	57	46	39	56	45	39	32
0.80	68	56	49	67	56	49	65	55	48	41
1.00	76	65	58	75	64	57	73	66	57	50
1.25	83	73	65	82	72	65	79	70	64	57
1.50	88	78	71	86	77	71	83	76	70	62
2.00	95	86	80	93	85	79	90	83	78	70
2.50	99	91	85	97	90	84	93	87	82	74
3.00	102	95	90	100	94	89	96	91	87	78
4.00	106	101	96	104	99	94	100	95	92	83
5.00	109	104	100	106	102	98	102	98	95	86
ROOM INDEX	UF(total)									Direct
According to DIN EN 13032-2 2004			Suspended				SHRNOM = 1.25			

C Range: 0 - 360DEG
 C Interval: 22.5DEG
 Test Speed: HIGH
 Temperature:24.9DEG
 Operators:Water
 Test Date:2023-09-08

γ Range: 0 - 180DEG
 γ Interval: 1.0DEG
 Test System:EVERFINE GO-R5000_V2 SYSTEM V2.00.446
 Humidity:50%
 Test Distance:2.513m [K=1.0000]
 Remarks: Model No: UCL-31B-18G

ISOCANDELA DIAGRAM

Test:U:120.05V I:0.0713A P:8.2600W PF:0.9650 Freq:60.00Hz Lamp Flux:551.427x1 lm		
NAME: ASD-UCS-18D8CC	TYPE: N/A	WEIGHT: N/A
SPEC.: N/A	DIM.: N/A	SERIAL No.: N/A
MFR.: ASD Lighting Corp	SUR.: N/A	Shielding Angle: N/A



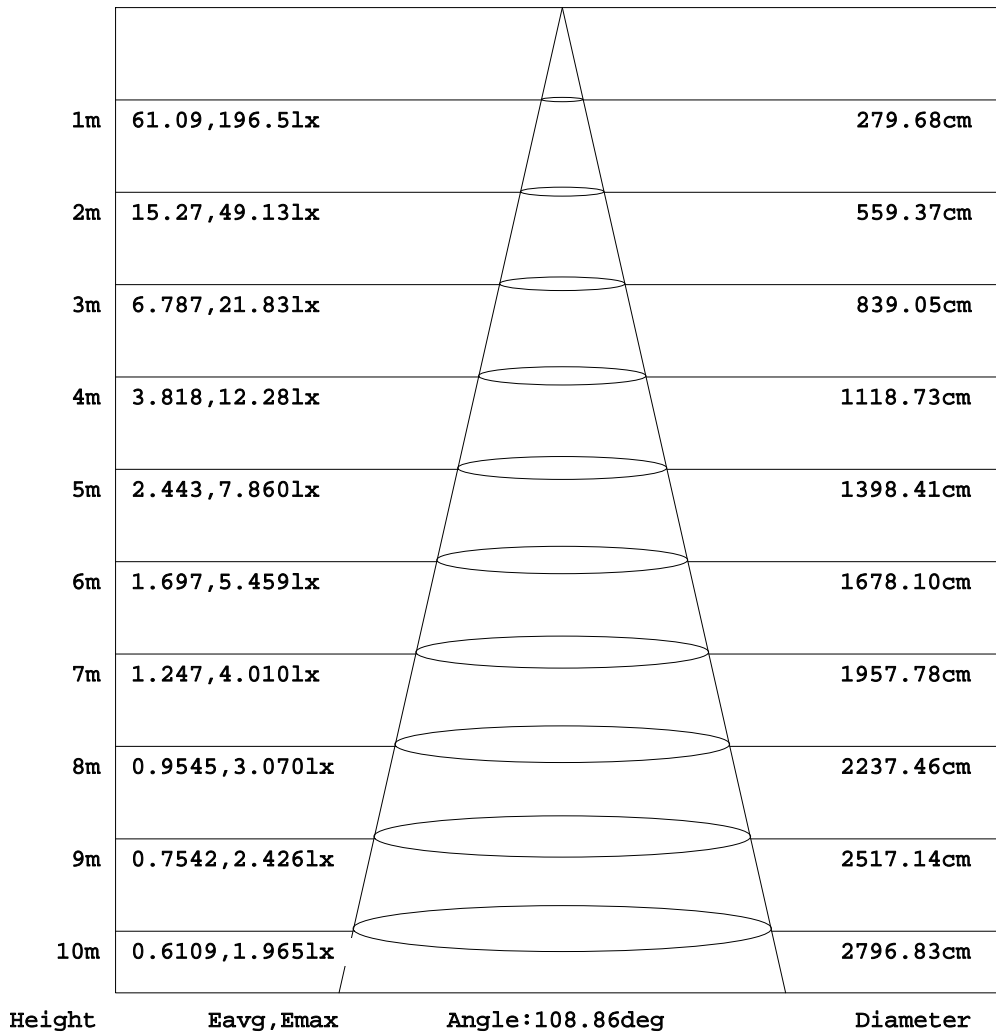
C Range: 0 - 360DEG
 C Interval: 22.5DEG
 Test Speed: HIGH
 Temperature:24.9DEG
 Operators:Water
 Test Date:2023-09-08

γ Range: 0 - 180DEG
 γ Interval: 1.0DEG
 Test System:EVERFINE GO-R5000_V2 SYSTEM V2.00.446
 Humidity:50%
 Test Distance:2.513m [K=1.0000]
 Remarks: Model No: UCL-31B-18G

AAI Figure

Test:U:120.05V I:0.0713A P:8.2600W PF:0.9650 Freq:60.00Hz Lamp Flux:551.427x1 lm		
NAME: ASD-UCS-18D8CC	TYPE: N/A	WEIGHT: N/A
SPEC.: N/A	DIM.: N/A	SERIAL No.: N/A
MFR.: ASD Lighting Corp	SUR.: N/A	Shielding Angle: N/A

Flux out:391.4 lm



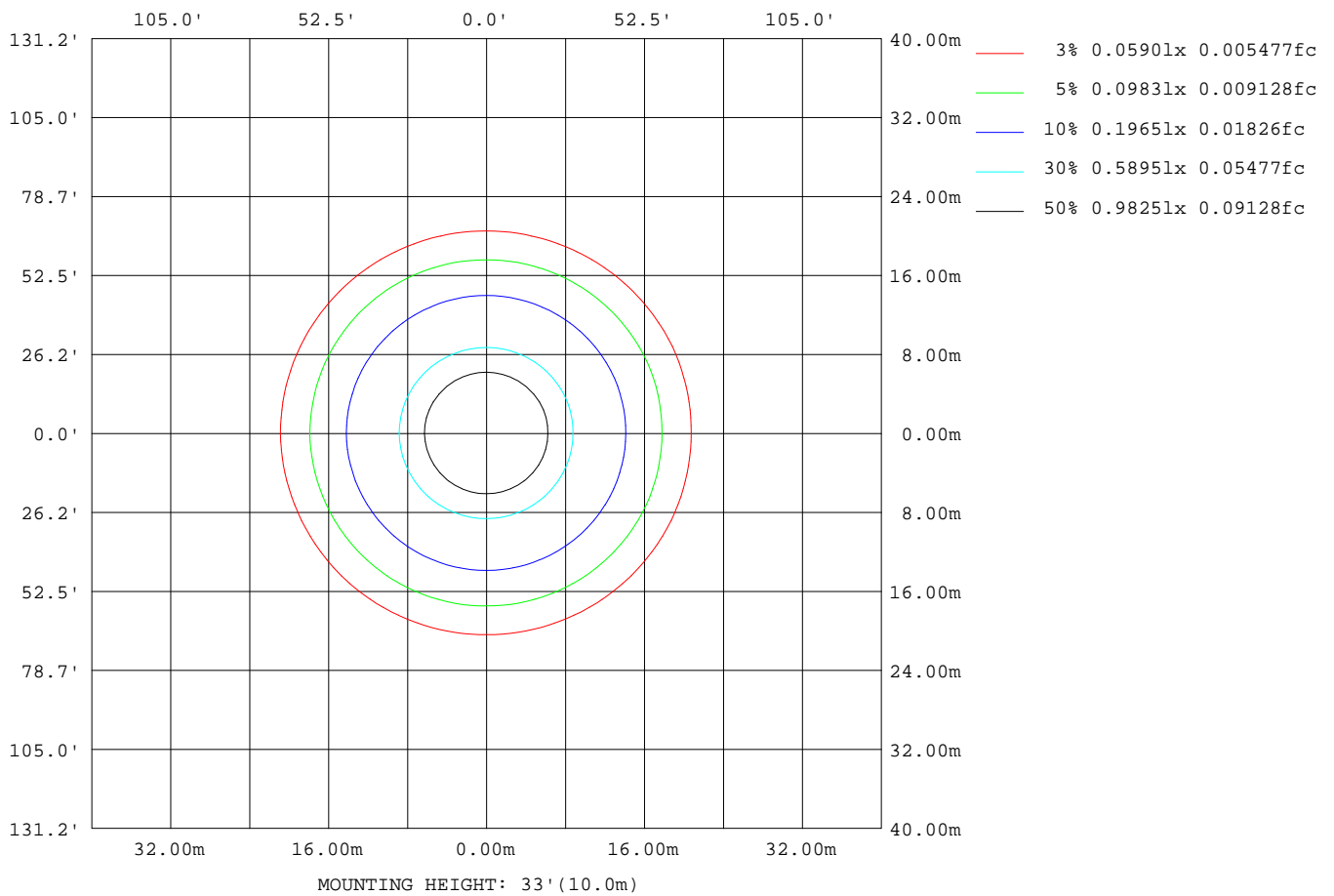
Note:The Curves indicate the illuminated area and the average illumination when the luminaire is at different distance.

C Range: 0 - 360DEG
C Interval: 22.5DEG
Test Speed: HIGH
Temperature:24.9DEG
Operators:Water
Test Date:2023-09-08

γ Range: 0 - 180DEG
γ Interval: 1.0DEG
Test System:EVERFINE GO-R5000_V2 SYSTEM V2.00.446
Humidity:50%
Test Distance:2.513m [K=1.0000]
Remarks: Model No: UCL-31B-18G

ISOLUX DIAGRAM

Test:U:120.05V I:0.0713A P:8.2600W PF:0.9650 Freq:60.00Hz Lamp Flux:551.427x1 lm		
NAME: ASD-UCS-18D8CC	TYPE: N/A	WEIGHT: N/A
SPEC.: N/A	DIM.: N/A	SERIAL No.: N/A
MFR.: ASD Lighting Corp	SUR.: N/A	Shielding Angle: N/A



C Range: 0 - 360DEG
 C Interval: 22.5DEG
 Test Speed: HIGH
 Temperature: 24.9DEG
 Operators: Water
 Test Date: 2023-09-08

γ Range: 0 - 180DEG
 γ Interval: 1.0DEG
 Test System: EVERFINE GO-R5000_V2 SYSTEM V2.00.446
 Humidity: 50%
 Test Distance: 2.513m [K=1.0000]
 Remarks: Model No: UCL-31B-18G

LED Avg.L Report

Test:U:120.05V I:0.0713A P:8.2600W PF:0.9650 Freq:60.00Hz Lamp Flux:551.427x1 lm		
NAME: ASD-UCS-18D8CC	TYPE: N/A	WEIGHT: N/A
SPEC.: N/A	DIM.: N/A	SERIAL No.: N/A
MFR.: ASD Lighting Corp	SUR.: N/A	Shielding Angle: N/A

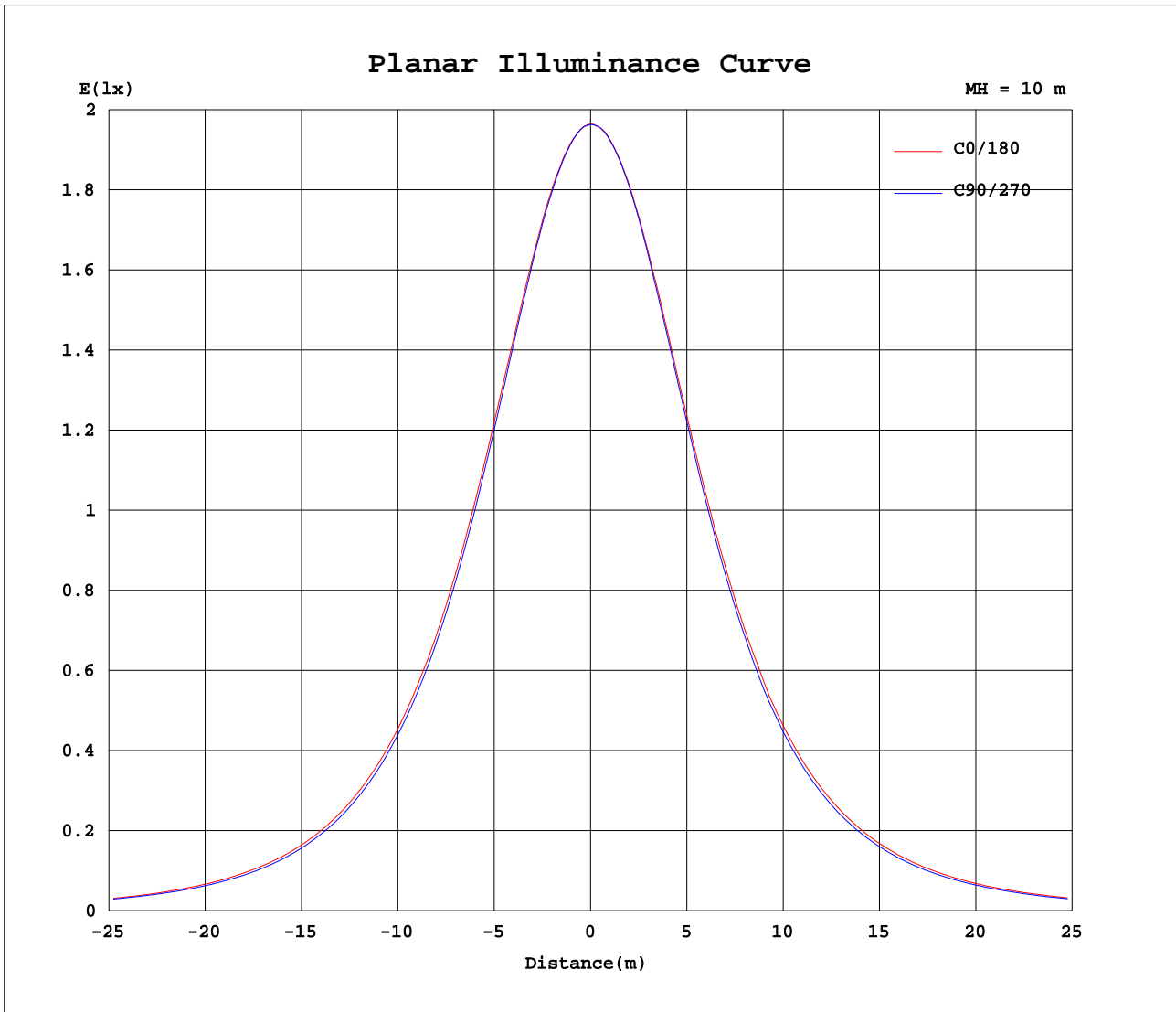
AvgL	cd/m2
L_0~180(65)av	12400
L_0~180(75)av	11113
L_0~180(85)av	8946
L_90~270(65)av	11637
L_90~270(75)av	10157
L_90~270(85)av	6863
L_45(65)av	12034
L_45(75)av	10670
L_45(85)av	7714

Standard: GB/T 29293-2012

C Range: 0 - 360DEG
 C Interval: 22.5DEG
 Test Speed: HIGH
 Temperature:24.9DEG
 Operators:Water
 Test Date:2023-09-08

γ Range: 0 - 180DEG
 γ Interval: 1.0DEG
 Test System:EVERFINE GO-R5000_V2 SYSTEM V2.00.446
 Humidity:50%
 Test Distance:2.513m [K=1.0000]
 Remarks: Model No: UCL-31B-18G

Planar Illuminance Curve



C Range: 0 - 360DEG
 C Interval: 22.5DEG
 Test Speed: HIGH
 Temperature: 24.9DEG
 Operators: Water
 Test Date: 2023-09-08

γ Range: 0 - 180DEG
 γ Interval: 1.0DEG
 Test System: EVERFINE GO-R5000_V2 SYSTEM V2.00.446
 Humidity: 50%
 Test Distance: 2.513m [K=1.0000]
 Remarks: Model No: UCL-31B-18G

LUMINOUS DISTRIBUTION INTENSITY DATA

Test:U:120.05V I:0.0713A P:8.2600W PF:0.9650 Freq:60.00Hz Lamp Flux:551.427x1 lm		
NAME: ASD-UCS-18D8CC	TYPE: N/A	WEIGHT: N/A
SPEC.: N/A	DIM.: N/A	SERIAL No.: N/A
MFR.: ASD Lighting Corp	SUR.: N/A	Shielding Angle: N/A

Table--1

UNIT: cd

C(DEG) γ (DEG)	0	22.5	45	67.5	90	112.5	135	157.5	180	202.5	225	247.5	270	292.5	315	337.5			
0	196	196	196	196	196	196	196	196	196	196	196	196	196	196	196	196			
5	195	195	195	195	195	195	195	195	196	196	196	196	196	196	196	195			
10	192	192	192	192	192	192	192	193	193	193	193	193	193	193	193	193			
15	187	187	187	187	186	187	188	188	189	189	189	189	188	188	188	188			
20	181	181	180	179	179	180	181	182	183	183	183	182	182	182	182	182			
25	173	173	172	171	171	172	173	174	175	175	175	174	174	174	174	174			
30	164	163	162	161	161	162	163	164	166	166	166	164	164	164	164	165			
35	153	152	151	150	150	151	152	154	156	156	155	153	153	153	153	154			
40	141	140	139	138	137	138	140	142	144	144	143	141	140	140	141	143			
45	128	127	126	125	124	125	127	129	131	130	129	127	126	127	128	129			
50	115	114	112	111	110	111	113	115	117	116	115	113	112	113	114	115			
55	100	99.3	97.6	96.1	95.7	96.5	98.5	100	102	102	100	98.6	97.6	98.0	99.3	101			
60	85.1	84.4	82.7	81.1	80.5	81.5	83.4	85.1	87.1	86.5	85.0	83.2	82.4	82.9	84.2	85.9			
65	69.4	68.8	67.3	65.8	65.2	66.1	67.8	69.2	71.3	70.7	69.3	67.6	66.8	67.2	68.7	70.1			
70	53.1	52.6	51.5	50.1	49.7	50.4	51.8	53.2	55.3	54.8	53.4	51.9	51.1	51.7	53.0	54.3			
75	37.5	37.2	36.3	35.2	34.7	35.4	36.6	37.6	39.7	39.1	37.9	36.6	35.8	36.3	37.5	38.7			
80	22.8	22.5	21.9	21.1	20.7	21.3	22.1	22.9	24.8	24.3	23.1	21.9	21.3	21.8	22.7	23.9			
85	9.54	9.38	8.81	8.28	8.05	8.34	8.96	9.61	11.4	10.7	9.33	8.35	8.00	8.16	9.00	10.4			
90	0.05	0.04	0.04	0.03	0.03	0.03	0.05	0.04	0.23	0.09	0.00	0.00	0.00	0.00	0.00	0.07			
95	0.03	0.05	0.07	0.03	0.03	0.03	0.06	0.05	0.01	0.01	0.01	0.01	0.01	0.01	0.01	0.01			
100	0.04	0.06	0.06	0.05	0.05	0.05	0.06	0.05	0.02	0.01	0.01	0.01	0.01	0.01	0.01	0.01			
105	0.05	0.06	0.06	0.05	0.05	0.05	0.06	0.05	0.02	0.02	0.02	0.02	0.02	0.02	0.02	0.02			
110	0.05	0.06	0.06	0.06	0.06	0.06	0.06	0.06	0.03	0.03	0.03	0.03	0.03	0.03	0.03	0.03			
115	0.06	0.07	0.07	0.07	0.07	0.07	0.07	0.07	0.04	0.03	0.03	0.03	0.03	0.03	0.03	0.03			
120	0.07	0.08	0.08	0.08	0.08	0.08	0.08	0.08	0.04	0.04	0.04	0.04	0.04	0.04	0.04	0.04			
125	0.09	0.09	0.09	0.10	0.10	0.10	0.10	0.09	0.06	0.06	0.05	0.05	0.05	0.05	0.05	0.05			
130	0.11	0.12	0.11	0.12	0.12	0.12	0.12	0.11	0.07	0.06	0.06	0.06	0.06	0.06	0.06	0.06			
135	0.14	0.14	0.15	0.15	0.15	0.15	0.15	0.13	0.08	0.08	0.08	0.08	0.08	0.08	0.08	0.07			
140	0.18	0.18	0.19	0.19	0.20	0.20	0.19	0.18	0.09	0.09	0.09	0.09	0.09	0.09	0.09	0.09			
145	0.22	0.23	0.25	0.25	0.25	0.25	0.24	0.22	0.10	0.10	0.10	0.11	0.11	0.11	0.10	0.11			
150	0.26	0.27	0.28	0.29	0.29	0.29	0.27	0.26	0.11	0.11	0.12	0.12	0.12	0.12	0.12	0.12			
155	0.29	0.32	0.32	0.32	0.33	0.32	0.31	0.30	0.13	0.12	0.14	0.14	0.13	0.14	0.13	0.14			
160	0.32	0.33	0.34	0.35	0.34	0.35	0.33	0.32	0.15	0.15	0.16	0.15	0.15	0.15	0.15	0.16			
165	0.32	0.33	0.33	0.34	0.34	0.34	0.33	0.32	0.17	0.17	0.17	0.17	0.17	0.17	0.16	0.17			
170	0.30	0.30	0.31	0.31	0.31	0.31	0.31	0.30	0.19	0.19	0.18	0.18	0.18	0.17	0.18	0.19			
175	0.29	0.29	0.29	0.28	0.28	0.28	0.29	0.29	0.22	0.22	0.22	0.21	0.20	0.20	0.20	0.21			
180	0.25	0.25	0.24	0.23	0.23	0.24	0.25	0.25	0.26	0.26	0.25	0.24	0.24	0.23	0.24	0.25			

C Range: 0 - 360DEG
 C Interval: 22.5DEG
 Test Speed: HIGH
 Temperature:24.9DEG
 Operators:Water
 Test Date:2023-09-08

γ Range: 0 - 180DEG
 γ Interval: 1.0DEG
 Test System:EVERFINE GO-R5000_V2 SYSTEM V2.00.446
 Humidity:50%
 Test Distance:2.513m [K=1.0000]
 Remarks: Model No: UCL-31B-18G