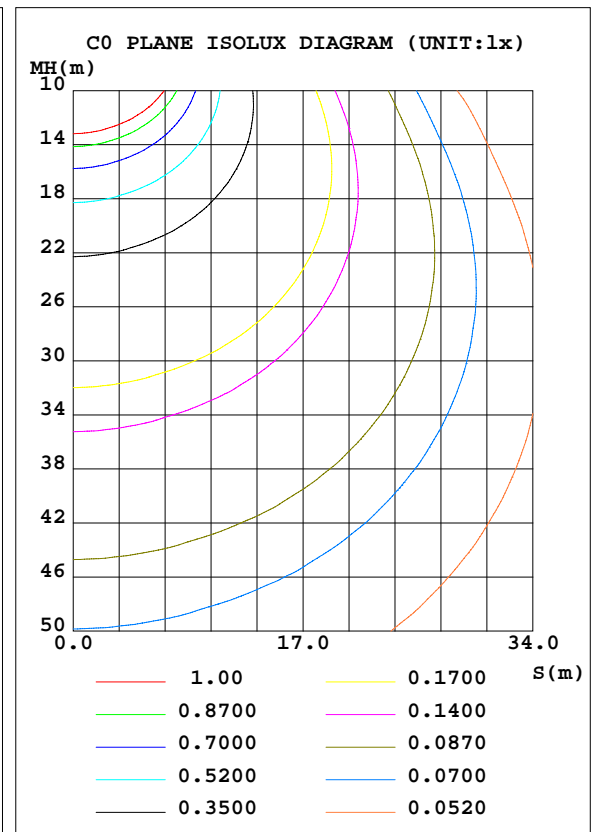
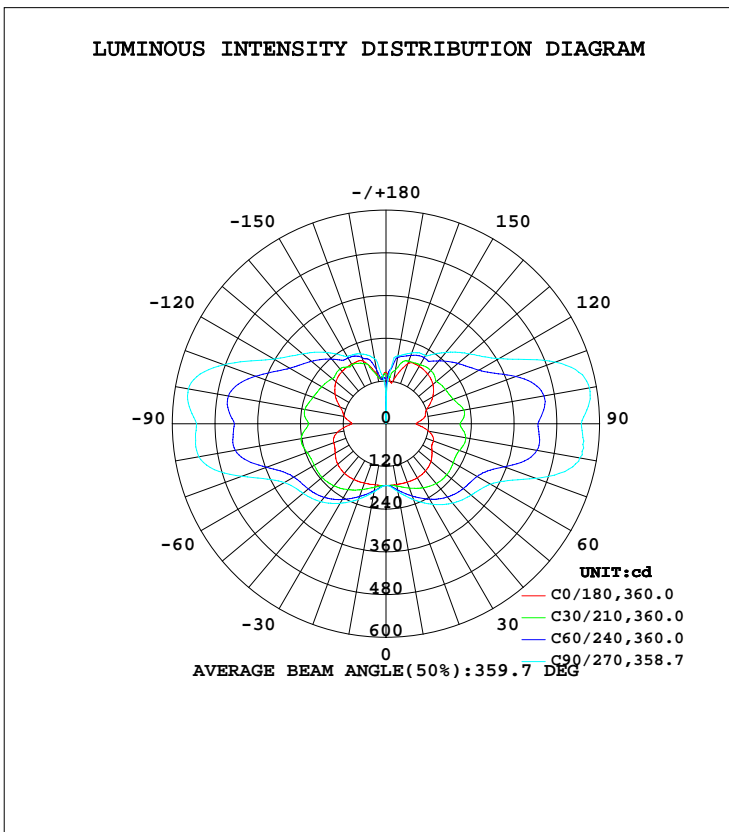


LUMINAIRE PHOTOMETRIC TEST REPORT

Test:U:277.00V I:0.1598A P:37.070W PF:0.8374 Freq:60.00Hz Lamp Flux:3374.1x1 lm		
NAME:	TYPE:LED	WEIGHT:
SPEC.:	DIM.:	SERIAL No.:
MFR.: ASD Lighting corp	SUR.:	Shielding Angle:

DATA OF LAMP		PHOTOMETRIC DATA Eff: 91.02 lm/W			
MODEL	ASD-LWS27-MV-72D40CC-BK	I _{max} (cd)	580.5	S/MH(C0/180)	1.60
NOMINAL POWER(W)	40	LOR(%)	100.0	S/MH(C90/270)	2.28
RATED VOLTAGE(V)	120-277	TOTAL FLUX(lm)	3374.1	η UP, DN(C0-180)	24.9,25.5
NOMINAL FLUX(lm)	3374.1	CIE CLASS	DIFFUSE	η UP, DN(C180-360)	24.5,25.1
LAMPS INSIDE	1	η up(%)	49.4	CIBSE SHR NOM	2.00
TEST VOLTAGE(V)	277	η down(%)	50.6	CIBSE SHR MAX	2.00



C Range: 0 - 360DEG
 C Interval: 15.0DEG
 Test Speed: HIGH
 Temperature: 25.0DEG
 Operators: Alan Wang
 Test Date: 08 May 2023

γ Range: 0 - 180DEG
 γ Interval: 1.0DEG
 Test System: EVERFINE GO-R5000_V2 SYSTEM V2.00.416
 Humidity: 43.5%
 Test Distance: 2.500m [K=1.0390]
 Remarks:

ZONAL FLUX DIAGRAM

ZONAL FLUX DIAGRAM:

γ	C0	C45	C90	C135	C180	C225	C270	C315	γ	Φ zone	Φ total	%lum,lamp
10	173.6	184.2	193.4	184.5	174.3	187.1	194.2	184.3	0- 10	17.10	17.10	0.51,0.51
20	174.9	205.8	227.0	207.3	177.3	208.6	225.5	204.6	10- 20	55.24	72.34	2.14,2.14
30	175.5	228.4	261.5	232.2	181.1	232.1	258.0	225.9	20- 30	99.65	172.0	5.1,5.1
40	172.9	246.9	290.8	253.6	181.9	251.8	286.0	243.9	30- 40	147.3	319.3	9.46,9.46
50	164.9	256.2	311.8	267.1	177.1	263.2	304.1	253.7	40- 50	191.9	511.2	15.2,15.2
60	149.1	259.0	339.6	274.2	165.0	268.6	330.5	256.8	50- 60	228.1	739.3	21.9,21.9
70	142.2	281.8	449.0	300.6	156.4	293.0	431.1	280.3	60- 70	270.0	1009	29.9,29.9
80	122.0	322.5	552.5	340.7	138.4	330.4	533.5	317.4	70- 80	339.2	1348	40,40
90	84.55	313.2	548.6	327.8	95.91	318.8	531.8	306.1	80- 90	359.0	1707	50.6,50.6
100	110.6	329.3	580.2	341.4	118.7	335.1	563.9	319.9	90-100	363.3	2071	61.4,61.4
110	122.9	287.3	506.2	302.1	137.2	298.7	484.8	278.9	100-110	344.2	2415	71.6,71.6
120	152.0	247.0	366.3	261.6	165.2	260.5	363.7	245.6	110-120	274.4	2689	79.7,79.7
130	172.2	226.3	306.6	239.3	183.5	237.6	306.0	225.9	120-130	219.3	2909	86.2,86.2
140	182.8	204.1	262.1	213.4	192.2	211.4	261.6	203.1	130-140	175.4	3084	91.4,91.4
150	186.5	205.9	221.1	212.9	193.4	208.1	217.9	204.9	140-150	131.6	3216	95.3,95.3
160	179.5	196.9	211.9	202.1	187.3	191.7	208.9	198.9	150-160	92.63	3308	98,98
170	126.6	178.6	193.3	157.1	138.8	137.7	185.6	185.7	160-170	51.93	3360	99.6,99.6
180	145.3	131.2	63.73	128.9	144.2	135.3	78.53	124.8	170-180	13.96	3374	100,100
DEG	LUMINOUS INTENSITY:cd									UNIT:lm		

Conical surface Flux(90deg): 410.19 lm

%lum = 12.2%

%lamp = 12.2%

Conical surface Flux(120deg): 739.33 lm

%lum = 21.9%

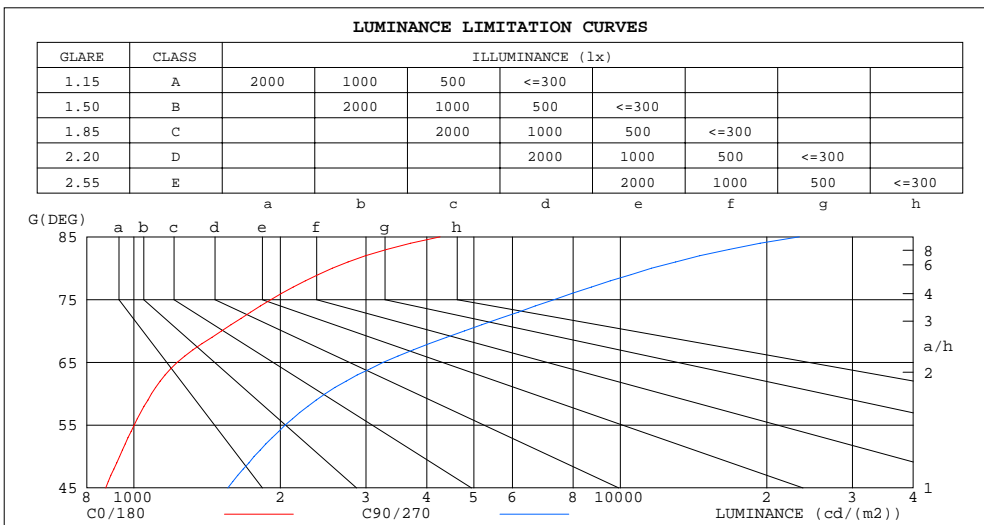
%lamp = 21.9%

C Range: 0 - 360DEG
 C Interval: 15.0DEG
 Test Speed: HIGH
 Temperature: 25.0DEG
 Operators: Alan Wang
 Test Date: 08 May 2023

γ Range: 0 - 180DEG
 γ Interval: 1.0DEG
 Test System: EVERFINE GO-R5000_V2 SYSTEM V2.00.416
 Humidity: 43.5%
 Test Distance: 2.500m [K=1.0390]
 Remarks:

LUMINANCE LIMITATION CURVES

Test:U:277.00V I:0.1598A P:37.070W PF:0.8374 Freq:60.00Hz Lamp Flux:3374.1x1 lm		
NAME:	TYPE:LED	WEIGHT:
SPEC.:	DIM.:	SERIAL No.:
MFR.: ASD Lighting corp	SUR.:	Shielding Angle:



LUMINANCE cd/(m2)		
G (DEG)	C0/180	C90/270
85	4262	23327
80	2559	11592
75	1914	7320
70	1515	4782
65	1228	3255
60	1087	2474
55	1002	2046
50	935	1767
45	875	1560

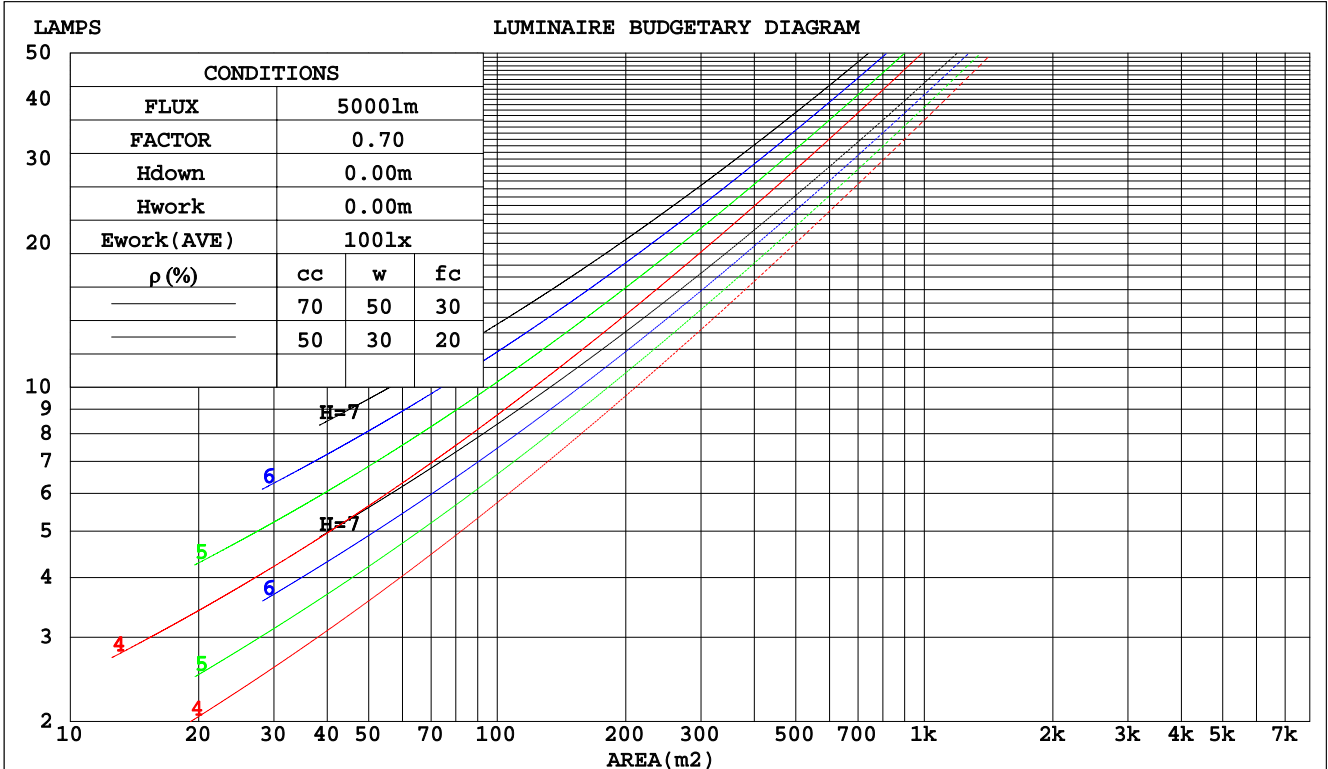
C Range: 0 - 360DEG
 C Interval: 15.0DEG
 Test Speed: HIGH
 Temperature: 25.0DEG
 Operators: Alan Wang
 Test Date: 08 May 2023

γ Range: 0 - 180DEG
 γ Interval: 1.0DEG
 Test System: EVERFINE GO-R5000_V2 SYSTEM V2.00.416
 Humidity: 43.5%
 Test Distance: 2.500m [K=1.0390]
 Remarks:

CU AND LUMINAIRE BUDGETARY ESTIMATE DIAGRAM

Test:U:277.00V I:0.1598A P:37.070W PF:0.8374 Freq:60.00Hz Lamp Flux:3374.1x1 lm		
NAME:	TYPE:LED	WEIGHT:
SPEC.:	DIM.:	SERIAL No.:
MFR.: ASD Lighting corp	SUR.:	Shielding Angle:

pcc	80%			70%			50%			30%			10%			0
	50%	30%	10%	50%	30%	10%	50%	30%	10%	50%	30%	10%	50%	30%	10%	0
pw																0
pfc	20%			20%			20%			20%			20%			0
RCR	RCR:Room Cavity Ratio						Coefficients of Utilization(CU)									
0.0	1.07	1.07	1.07	.99	.99	.99	.84	.84	.84	.70	.70	.70	.57	.57	.57	.51
1.0	.86	.80	.75	.79	.74	.69	.65	.61	.58	.53	.50	.47	.42	.40	.37	.32
2.0	.72	.64	.57	.66	.59	.53	.55	.49	.44	.44	.40	.36	.34	.31	.28	.23
3.0	.62	.53	.46	.57	.49	.42	.47	.40	.35	.37	.32	.28	.29	.25	.22	.17
4.0	.54	.45	.37	.49	.41	.34	.41	.34	.29	.32	.27	.23	.25	.21	.18	.14
5.0	.48	.38	.31	.44	.35	.29	.36	.29	.24	.29	.23	.19	.22	.18	.15	.11
6.0	.42	.33	.26	.39	.30	.24	.32	.25	.20	.26	.20	.16	.20	.16	.12	.09
7.0	.38	.29	.23	.35	.27	.21	.29	.22	.17	.23	.18	.14	.18	.14	.11	.08
8.0	.34	.26	.20	.31	.24	.18	.26	.20	.15	.21	.16	.12	.16	.12	.09	.07
9.0	.31	.23	.17	.29	.21	.16	.24	.18	.13	.19	.14	.11	.15	.11	.08	.06
10.0	.28	.21	.15	.26	.19	.14	.22	.16	.12	.18	.13	.10	.14	.10	.07	.05



C Range: 0 - 360DEG
 C Interval: 15.0DEG
 Test Speed: HIGH
 Temperature: 25.0DEG
 Operators: Alan Wang
 Test Date: 08 May 2023

γ Range: 0 - 180DEG
 γ Interval: 1.0DEG
 Test System: EVERFINE GO-R5000_V2 SYSTEM V2.00.416
 Humidity: 43.5%
 Test Distance: 2.500m [K=1.0390]
 Remarks:

WEC AND CCEC

Test:U:277.00V I:0.1598A P:37.070W PF:0.8374 Freq:60.00Hz Lamp Flux:3374.1x1 lm		
NAME:	TYPE:LED	WEIGHT:
SPEC.:	DIM.:	SERIAL No.:
MFR.: ASD Lighting corp	SUR.:	Shielding Angle:

ρcc	80%			70%			50%			30%			10%			0
ρw	50%	30%	10%	50%	30%	10%	50%	30%	10%	50%	30%	10%	50%	30%	10%	0
ρfc	20%			20%			20%			20%			20%			0
RCR	RCR:Room Cavity Ratio						Wall Exitance Coefficients(WEC)									
0.0																
1.0	.424	.241	.076	.402	.229	.073	.360	.206	.066	.321	.185	.060	.286	.166	.053	
2.0	.350	.192	.059	.330	.182	.056	.291	.162	.050	.256	.144	.045	.224	.126	.040	
3.0	.303	.161	.048	.285	.152	.046	.250	.135	.041	.217	.119	.037	.187	.104	.032	
4.0	.269	.140	.041	.252	.132	.039	.220	.117	.035	.190	.102	.031	.162	.088	.027	
5.0	.242	.123	.036	.226	.116	.034	.197	.102	.030	.169	.089	.027	.144	.077	.023	
6.0	.220	.110	.032	.206	.104	.030	.178	.091	.027	.153	.080	.023	.129	.068	.020	
7.0	.202	.100	.028	.189	.094	.027	.163	.083	.024	.140	.072	.021	.118	.061	.018	
8.0	.186	.091	.026	.174	.086	.024	.151	.075	.022	.129	.065	.019	.108	.056	.016	
9.0	.173	.084	.023	.162	.079	.022	.140	.069	.020	.119	.060	.017	.100	.051	.015	
10.0	.162	.077	.022	.151	.073	.020	.131	.064	.018	.111	.055	.016	.093	.047	.013	

ρcc	80%			70%			50%			30%			10%			0
ρw	50%	30%	10%	50%	30%	10%	50%	30%	10%	50%	30%	10%	50%	30%	10%	0
ρfc	20%			20%			20%			20%			20%			0
RCR	RCR:Room Cavity Ratio						Ceiling Cavity Exitance Coefficients(CCEC)									
0.0	.567	.567	.567	.484	.484	.484	.331	.331	.331	.190	.190	.190	.061	.061	.061	
1.0	.568	.535	.505	.486	.459	.434	.332	.316	.300	.191	.183	.175	.061	.059	.057	
2.0	.562	.514	.473	.481	.442	.409	.330	.306	.285	.190	.178	.167	.061	.058	.054	
3.0	.555	.499	.454	.476	.430	.393	.327	.299	.276	.189	.174	.163	.061	.057	.053	
4.0	.547	.487	.441	.470	.421	.383	.323	.293	.270	.187	.172	.160	.060	.056	.052	
5.0	.540	.478	.433	.464	.414	.376	.319	.289	.266	.185	.170	.158	.060	.055	.052	
6.0	.533	.471	.426	.458	.408	.371	.316	.285	.263	.183	.168	.156	.059	.055	.052	
7.0	.526	.465	.422	.452	.403	.368	.312	.282	.261	.182	.166	.155	.059	.054	.051	
8.0	.519	.460	.419	.447	.399	.365	.309	.280	.259	.180	.165	.154	.058	.054	.051	
9.0	.513	.455	.416	.442	.395	.363	.306	.278	.258	.178	.164	.154	.058	.054	.051	
10.0	.507	.451	.414	.437	.392	.361	.303	.276	.257	.177	.163	.153	.057	.054	.051	

C Range: 0 - 360DEG
 C Interval: 15.0DEG
 Test Speed: HIGH
 Temperature: 25.0DEG
 Operators: Alan Wang
 Test Date: 08 May 2023

γ Range: 0 - 180DEG
 γ Interval: 1.0DEG
 Test System: EVERFINE GO-R5000_V2 SYSTEM V2.00.416
 Humidity: 43.5%
 Test Distance: 2.500m [K=1.0390]
 Remarks:

UGR(Unified Glare Rating) Table

Test:U:277.00V I:0.1598A P:37.070W PF:0.8374 Freq:60.00Hz Lamp Flux:3374.1x1 lm										
NAME:					TYPE:LED			WEIGHT:		
SPEC.:					DIM.:			SERIAL No.:		
MFR.: ASD Lighting corp					SUR.:			Shielding Angle:		
ceiling/cavity	0.7	0.7	0.5	0.5	0.3	0.7	0.7	0.5	0.5	0.3
walls	0.5	0.3	0.5	0.3	0.3	0.5	0.3	0.5	0.3	0.3
working plane	0.2	0.2	0.2	0.2	0.2	0.2	0.2	0.2	0.2	0.2
Room dimensions	Viewed crosswise					Viewed endwise				
x = 2H y = 2H	9.1	10.2	10.0	11.1	12.3	12.5	13.6	13.4	14.5	15.7
3H	11.7	12.7	12.6	13.6	14.8	16.9	17.9	17.8	18.9	20.0
4H	13.1	14.1	14.0	15.0	16.2	19.7	20.6	20.6	21.5	22.7
6H	14.7	15.5	15.6	16.5	17.7	22.5	23.3	23.4	24.3	25.5
8H	15.4	16.3	16.3	17.2	18.4	23.9	24.7	24.8	25.7	26.9
12H	16.2	17.0	17.1	18.0	19.2	25.4	26.2	26.3	27.2	28.4
4H 2H	11.0	11.9	11.9	12.8	14.0	13.2	14.1	14.1	15.1	16.2
3H	13.7	14.5	14.6	15.5	16.7	17.8	18.6	18.7	19.6	20.8
4H	15.2	16.0	16.2	17.0	18.2	20.7	21.4	21.6	22.4	23.6
6H	16.8	17.5	17.8	18.5	19.7	23.7	24.3	24.6	25.3	26.6
8H	17.6	18.2	18.5	19.2	20.5	25.2	25.9	26.2	26.8	28.1
12H	18.4	19.0	19.4	20.0	21.3	26.9	27.5	27.8	28.5	29.8
8H 4H	17.1	17.8	18.1	18.8	20.1	21.0	21.7	22.0	22.6	23.9
6H	18.9	19.5	19.9	20.5	21.8	24.3	24.9	25.3	25.9	27.2
8H	19.8	20.3	20.8	21.3	22.7	26.1	26.6	27.1	27.6	28.9
12H	20.7	21.2	21.7	22.2	23.5	28.0	28.4	29.0	29.5	30.8
12H 4H	17.9	18.5	18.9	19.5	20.8	21.0	21.6	22.0	22.6	23.9
6H	19.9	20.4	20.9	21.4	22.7	24.4	24.9	25.4	25.9	27.3
8H	20.9	21.4	22.0	22.4	23.8	26.3	26.7	27.3	27.8	29.1
Variations with the observer position at spacings:										
S = 1.0H	+ 0.1 / - 0.1					+ 0.1 / - 0.1				
1.5H	+ 0.2 / - 0.2					+ 0.3 / - 0.3				
2.0H	+ 0.3 / - 0.4					+ 0.3 / - 0.4				

CIE Pub.117, 3374 lm Total Lamp Luminous Flux Corrected ($8\log(F/F_0) = 4.2$)
Area: 0.2745 m²

C Range: 0 - 360DEG
C Interval: 15.0DEG
Test Speed: HIGH
Temperature: 25.0DEG
Operators: Alan Wang
Test Date: 08 May 2023

γ Range: 0 - 180DEG
 γ Interval: 1.0DEG
Test System: EVERFINE GO-R5000_V2 SYSTEM V2.00.416
Humidity: 43.5%
Test Distance: 2.500m [K=1.0390]
Remarks:

UTILIZATION FACTORS TABLE

Test:U:277.00V I:0.1598A P:37.070W PF:0.8374 Freq:60.00Hz Lamp Flux:3374.1x1 lm		
NAME:	TYPE:LED	WEIGHT:
SPEC.:	DIM.:	SERIAL No.:
MFR.: ASD Lighting corp	SUR.:	Shielding Angle:

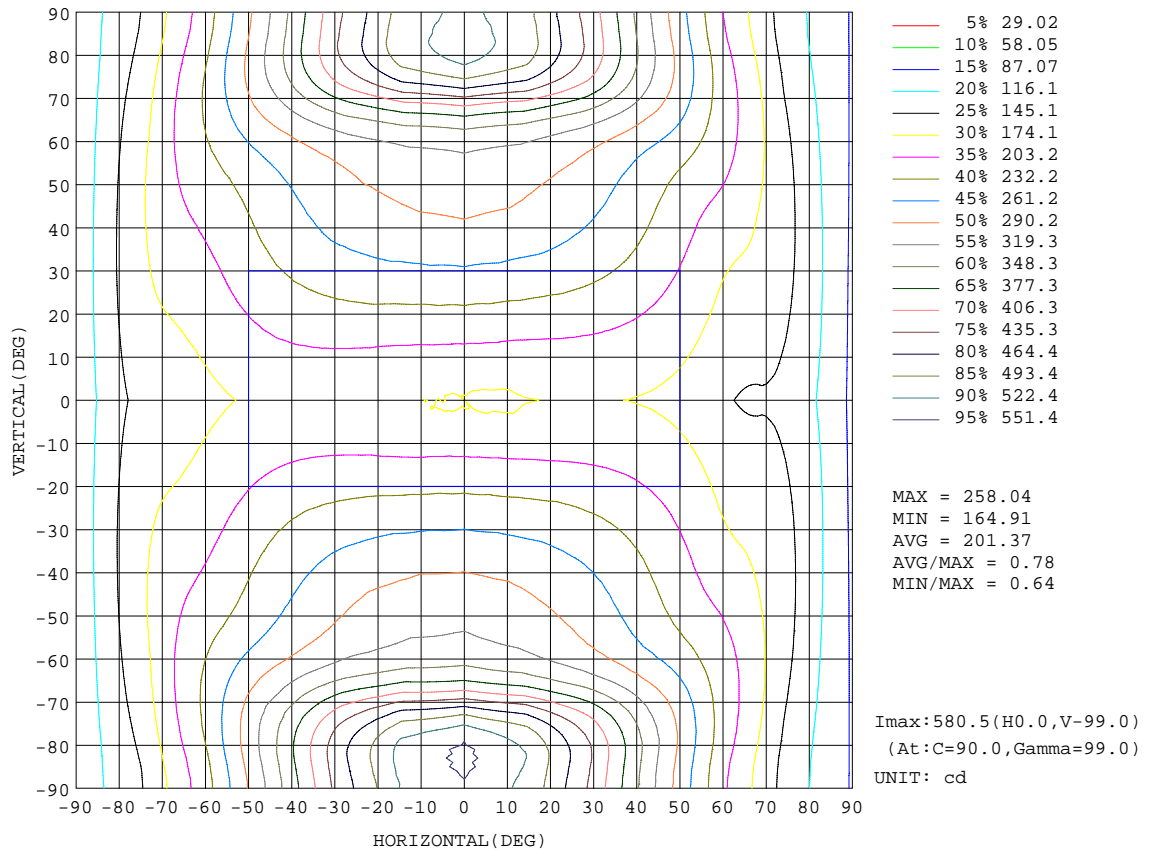
REFLECTANCE										
Ceiling	0.8	0.8	0.8	0.7	0.7	0.7	0.5	0.5	0.5	0
Walls	0.7	0.5	0.3	0.7	0.5	0.3	0.7	0.5	0.3	0
Working plane	0.2	0.2	0.2	0.2	0.2	0.2	0.2	0.2	0.2	0
ROOM INDEX	UTILIZATION FACTORS(PERCENT) $k(RI) \times RCR = 5$									
k = 0.60	36	23	16	34	22	15	30	20	14	7
0.80	44	30	22	41	29	21	36	26	19	9
1.00	51	37	28	48	35	26	42	33	24	12
1.25	58	43	34	54	41	32	46	36	28	15
1.50	63	49	39	59	46	37	50	40	33	17
2.00	71	58	48	65	54	45	56	46	39	21
2.50	76	64	54	70	59	51	59	51	44	24
3.00	80	69	59	74	64	56	62	55	48	26
4.00	85	75	67	79	70	63	66	60	54	30
5.00	89	80	73	82	74	68	69	63	58	32
ROOM INDEX	UF(total)									Direct
According to DIN EN 13032-2 2004			Suspended				SHRNOM = 1.25			

C Range: 0 - 360DEG
 C Interval: 15.0DEG
 Test Speed: HIGH
 Temperature: 25.0DEG
 Operators: Alan Wang
 Test Date: 08 May 2023

γ Range: 0 - 180DEG
 γ Interval: 1.0DEG
 Test System: EVERFINE GO-R5000_V2 SYSTEM V2.00.416
 Humidity: 43.5%
 Test Distance: 2.500m [K=1.0390]
 Remarks:

ISOCANDELA DIAGRAM

Test:U:277.00V I:0.1598A P:37.070W PF:0.8374 Freq:60.00Hz Lamp Flux:3374.1x1 lm		
NAME:	TYPE:LED	WEIGHT:
SPEC.:	DIM.:	SERIAL No.:
MFR.: ASD Lighting corp	SUR.:	Shielding Angle:

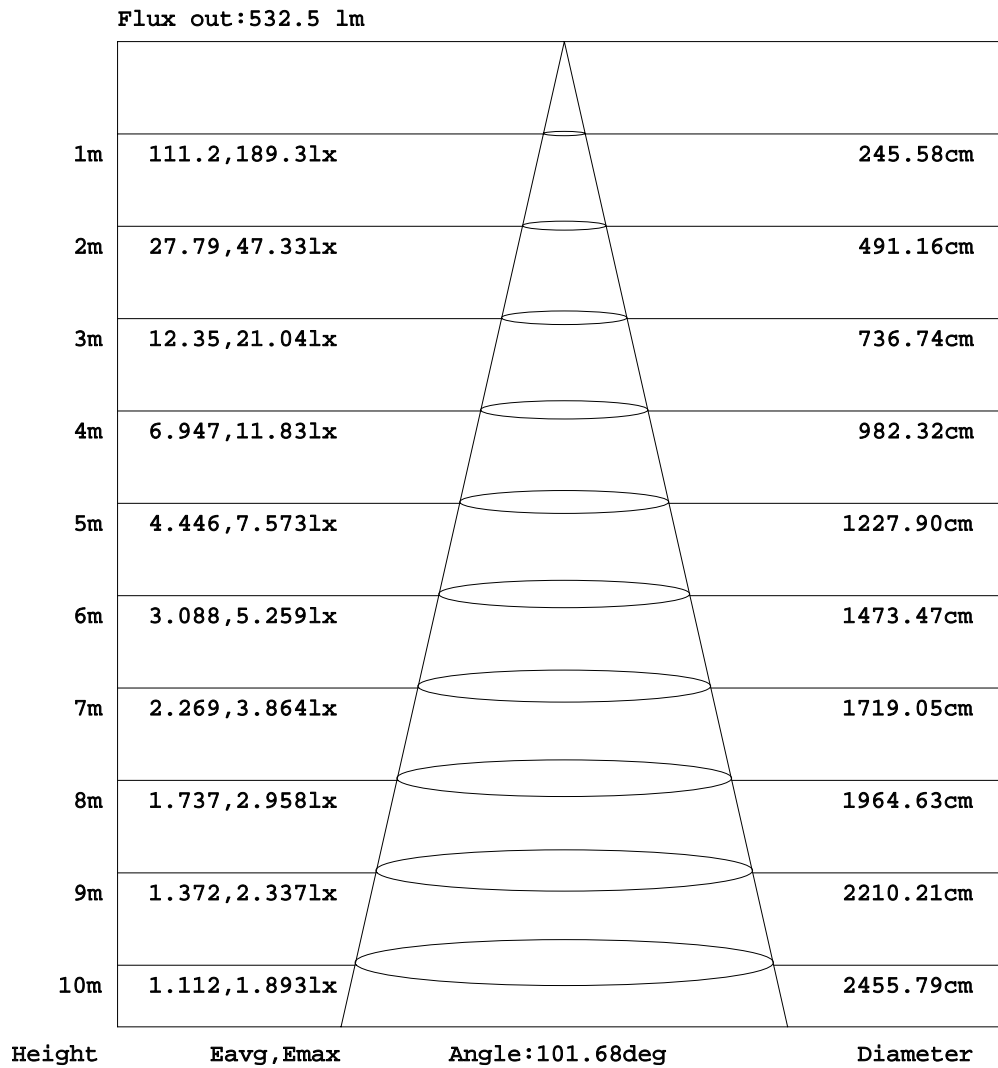


C Range: 0 - 360DEG
 C Interval: 15.0DEG
 Test Speed: HIGH
 Temperature: 25.0DEG
 Operators: Alan Wang
 Test Date: 08 May 2023

γ Range: 0 - 180DEG
 γ Interval: 1.0DEG
 Test System: EVERFINE GO-R5000_V2 SYSTEM V2.00.416
 Humidity: 43.5%
 Test Distance: 2.500m [K=1.0390]
 Remarks:

AAI Figure

Test:U:277.00V I:0.1598A P:37.070W PF:0.8374 Freq:60.00Hz Lamp Flux:3374.1x1 lm		
NAME:	TYPE:LED	WEIGHT:
SPEC.:	DIM.:	SERIAL No.:
MFR.: ASD Lighting corp	SUR.:	Shielding Angle:



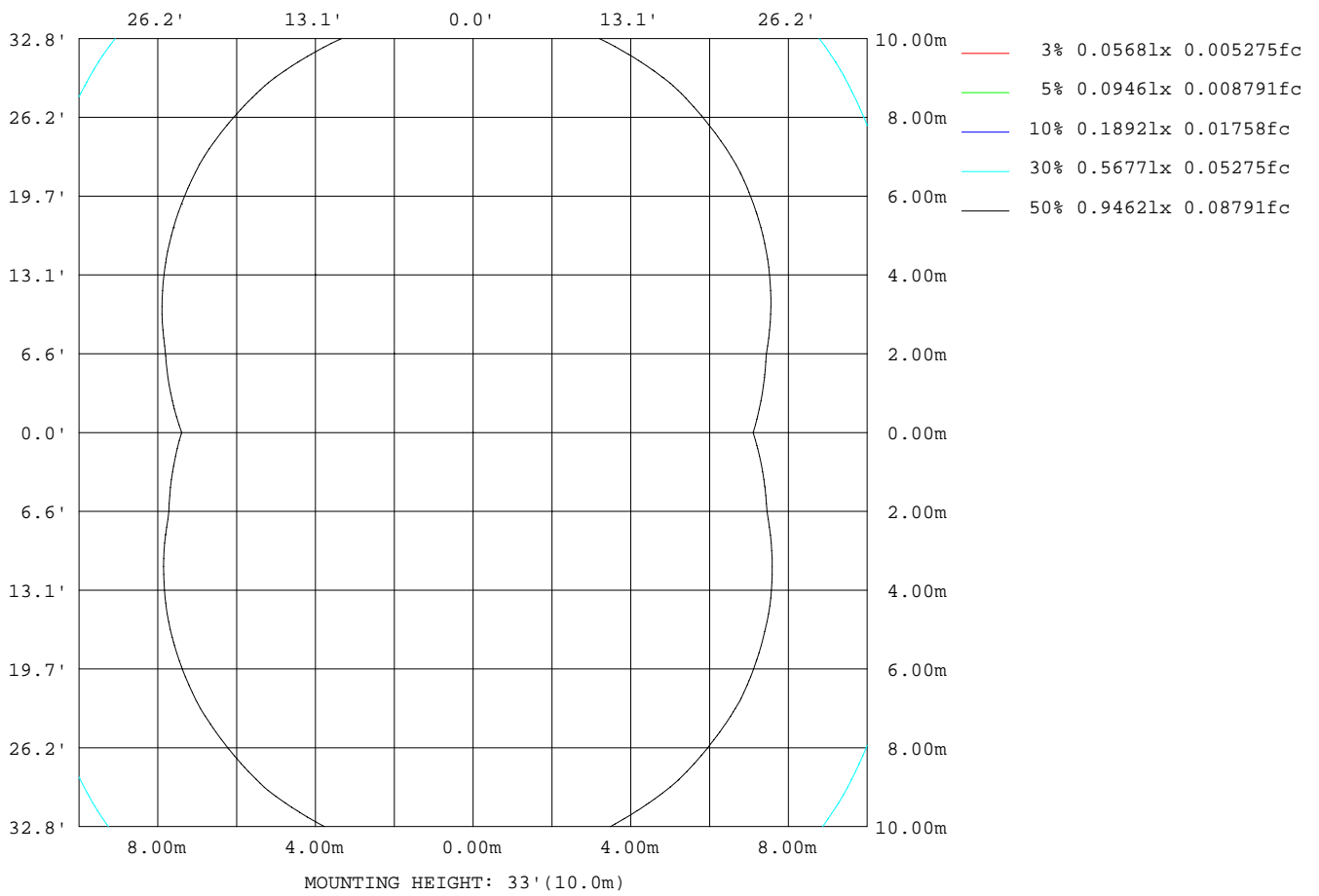
Note:The Curves indicate the illuminated area and the average illumination when the luminaire is at different distance.

C Range: 0 - 360DEG
 C Interval: 15.0DEG
 Test Speed: HIGH
 Temperature: 25.0DEG
 Operators:Alan Wang
 Test Date:08 May 2023

γ Range: 0 - 180DEG
 γ Interval: 1.0DEG
 Test System:EVERFINE GO-R5000_V2 SYSTEM V2.00.416
 Humidity: 43.5%
 Test Distance:2.500m [K=1.0390]
 Remarks:

ISOLUX DIAGRAM

Test:U:277.00V I:0.1598A P:37.070W PF:0.8374 Freq:60.00Hz Lamp Flux:3374.1x1 lm		
NAME:	TYPE:LED	WEIGHT:
SPEC.:	DIM.:	SERIAL No.:
MFR.: ASD Lighting corp	SUR.:	Shielding Angle:



C Range: 0 - 360DEG
 C Interval: 15.0DEG
 Test Speed: HIGH
 Temperature: 25.0DEG
 Operators: Alan Wang
 Test Date: 08 May 2023

γ Range: 0 - 180DEG
 γ Interval: 1.0DEG
 Test System: EVERFINE GO-R5000_V2 SYSTEM V2.00.416
 Humidity: 43.5%
 Test Distance: 2.500m [K=1.0390]
 Remarks:

LED Avg.L Report

Test:U:277.00V I:0.1598A P:37.070W PF:0.8374 Freq:60.00Hz Lamp Flux:3374.1x1 lm		
NAME:	TYPE:LED	WEIGHT:
SPEC.:	DIM.:	SERIAL No.:
MFR.: ASD Lighting corp	SUR.:	Shielding Angle:

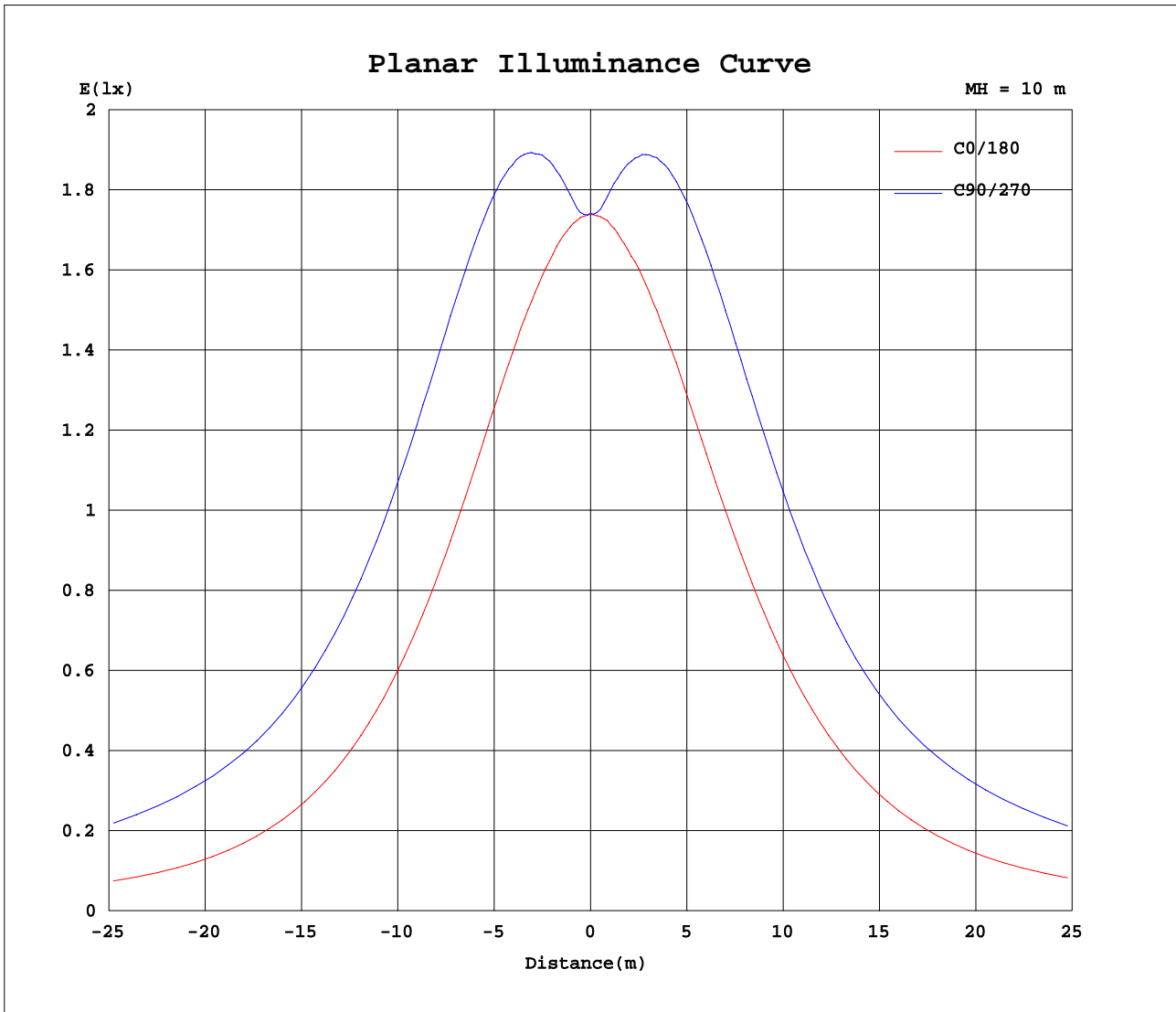
AvgL	cd/m2
L_0~180(65)av	1300
L_0~180(75)av	2024
L_0~180(85)av	4582
L_90~270(65)av	3215
L_90~270(75)av	7171
L_90~270(85)av	22880
L_45(65)av	2339
L_45(75)av	4405
L_45(85)av	13558

Standard: GB/T 29293-2012

C Range: 0 - 360DEG
 C Interval: 15.0DEG
 Test Speed: HIGH
 Temperature: 25.0DEG
 Operators: Alan Wang
 Test Date: 08 May 2023

γ Range: 0 - 180DEG
 γ Interval: 1.0DEG
 Test System: EVERFINE GO-R5000_V2 SYSTEM V2.00.416
 Humidity: 43.5%
 Test Distance: 2.500m [K=1.0390]
 Remarks:

Planar Illuminance Curve



C Range: 0 - 360DEG
C Interval: 15.0DEG
Test Speed: HIGH
Temperature: 25.0DEG
Operators: Alan Wang
Test Date: 08 May 2023

γ Range: 0 - 180DEG
 γ Interval: 1.0DEG
Test System: EVERFINE GO-R5000_V2 SYSTEM V2.00.416
Humidity: 43.5%
Test Distance: 2.500m [K=1.0390]
Remarks:

LUMINOUS DISTRIBUTION INTENSITY DATA

Test:U:277.00V I:0.1598A P:37.070W PF:0.8374 Freq:60.00Hz Lamp Flux:3374.1x1 lm		
NAME:	TYPE:LED	WEIGHT:
SPEC.:	DIM.:	SERIAL No.:
MFR.: ASD Lighting corp	SUR.:	Shielding Angle:

Table--1

UNIT: cd

C(DEG) γ (DEG)	0	15	30	45	60	75	90	105	120	135	150	165	180	195	210	225	240	255	270	
0	174	174	174	174	174	174	174	174	174	173	174	173	174	174	174	174	174	174	174	174
5	174	174	174	175	177	178	179	179	178	175	174	174	174	174	175	178	179	180	180	180
10	174	174	178	184	189	192	193	193	190	185	179	175	174	176	181	187	191	193	194	194
15	174	176	185	195	202	208	210	208	203	195	186	178	176	180	188	197	204	208	209	209
20	175	180	193	206	217	224	227	225	218	207	195	182	177	185	197	209	218	223	225	225
25	175	183	200	217	231	240	245	242	233	220	204	187	180	190	206	220	232	240	242	242
30	175	187	208	228	245	256	262	258	248	232	213	192	181	195	214	232	246	255	258	258
35	175	190	214	239	258	272	277	274	262	244	221	196	182	199	222	243	259	269	273	273
40	173	191	219	247	269	284	291	287	274	254	228	199	182	202	228	252	270	281	286	286
45	170	191	222	253	278	294	303	298	285	262	233	201	180	204	232	259	279	291	296	296
50	165	189	223	256	284	303	312	307	292	267	235	201	177	203	234	263	285	298	304	304
55	158	184	221	258	288	311	322	317	299	271	236	198	172	200	234	266	290	306	313	313
60	149	179	218	259	296	325	340	333	309	274	235	194	165	196	233	269	299	321	330	330
65	142	174	216	264	314	356	378	366	330	282	234	190	159	192	232	276	319	354	368	368
70	142	175	220	282	354	418	449	428	372	301	238	189	156	192	236	293	357	409	431	431
75	136	172	226	306	403	483	520	494	420	325	245	188	152	190	242	316	403	471	499	499
80	122	162	227	323	430	517	553	528	447	341	245	178	138	180	242	330	430	504	534	534
85	102	146	218	320	432	519	558	529	448	337	234	160	117	163	230	327	431	508	537	537
90	84.5	132	208	313	427	513	549	523	441	328	220	143	95.9	145	218	319	426	503	532	532
95	96.7	143	220	328	445	534	571	542	458	340	231	153	106	156	229	333	444	525	555	555
100	111	148	223	329	451	542	580	551	463	341	233	157	119	159	231	335	449	534	564	564
105	115	142	212	314	431	523	561	528	442	326	225	154	126	156	225	321	430	511	540	540
110	123	139	202	287	389	472	506	477	399	302	217	154	137	155	218	299	390	461	485	485
115	138	141	196	262	337	401	428	408	350	278	212	158	152	157	213	277	347	400	418	418
120	152	155	193	247	301	345	366	353	314	262	208	171	165	167	208	261	312	351	364	364
125	163	165	190	237	280	314	330	320	291	250	204	181	176	175	204	249	290	319	331	331
130	172	172	185	226	264	292	307	298	274	239	199	187	183	181	198	238	273	298	306	306
135	179	176	192	216	248	272	284	277	256	226	205	190	189	186	199	225	256	277	284	284
140	183	178	195	204	231	253	262	257	239	213	206	190	192	189	201	211	237	256	262	262
145	185	179	196	207	214	232	239	235	221	216	206	188	193	187	194	209	218	234	238	238
150	186	176	192	206	214	219	221	221	220	213	202	184	193	183	192	208	213	217	218	218
155	187	174	189	203	212	217	220	220	215	208	198	181	193	180	187	196	210	214	215	215
160	180	168	188	197	205	210	212	211	207	202	193	171	187	179	181	192	198	207	209	209
165	154	160	180	192	196	200	202	201	199	190	174	154	164	166	159	171	188	195	199	199
170	127	138	152	179	190	192	193	192	173	157	136	137	139	139	136	138	154	171	186	186
175	124	121	131	151	152	160	155	141	133	131	130	135	130	130	133	127	125	128	139	139
180	145	143	134	131	102	65.2	63.7	92.1	121	129	140	144	144	144	141	135	129	122	78.5	78.5

C Range: 0 - 360DEG
 C Interval: 15.0DEG
 Test Speed: HIGH
 Temperature: 25.0DEG
 Operators: Alan Wang
 Test Date: 08 May 2023

γ Range: 0 - 180DEG
 γ Interval: 1.0DEG
 Test System: EVERFINE GO-R5000_V2 SYSTEM V2.00.416
 Humidity: 43.5%
 Test Distance: 2.500m [K=1.0390]
 Remarks:

LUMINOUS DISTRIBUTION INTENSITY DATA

Test:U:277.00V I:0.1598A P:37.070W PF:0.8374 Freq:60.00Hz Lamp Flux:3374.1x1 lm		
NAME:	TYPE:LED	WEIGHT:
SPEC.:	DIM.:	SERIAL No.:
MFR.: ASD Lighting corp	SUR.:	Shielding Angle:

Table--2

UNIT: cd

C(DEG) γ (DEG)	285	300	315	330	345														
0	174	174	173	174	173														
5	180	179	176	174	173														
10	193	190	184	179	174														
15	207	202	194	185	177														
20	223	215	205	193	180														
25	238	229	215	200	184														
30	254	242	226	207	187														
35	267	255	236	213	189														
40	280	266	244	218	191														
45	289	273	250	221	190														
50	296	280	254	222	188														
55	304	285	255	221	184														
60	318	292	257	218	178														
65	349	311	263	216	173														
70	405	349	280	221	175														
75	468	396	305	228	172														
80	500	422	317	226	161														
85	504	423	314	215	144														
90	500	417	306	203	129														
95	521	435	319	215	140														
100	528	438	320	217	145														
105	504	415	302	208	139														
110	452	373	279	199	136														
115	391	331	259	194	141														
120	344	300	246	192	153														
125	314	280	236	189	163														
130	293	264	226	185	169														
135	273	247	214	191	173														
140	253	230	203	194	174														
145	232	214	205	193	174														
150	216	211	205	191	170														
155	214	210	203	191	171														
160	209	205	199	189	174														
165	200	198	194	187	163														
170	189	189	186	170	145														
175	154	151	144	143	122														
180	86.1	88.9	125	132	137														

C Range: 0 - 360DEG
 C Interval: 15.0DEG
 Test Speed: HIGH
 Temperature: 25.0DEG
 Operators: Alan Wang
 Test Date: 08 May 2023

γ Range: 0 - 180DEG
 γ Interval: 1.0DEG
 Test System: EVERFINE GO-R5000_V2 SYSTEM V2.00.416
 Humidity: 43.5%
 Test Distance: 2.500m [K=1.0390]
 Remarks: