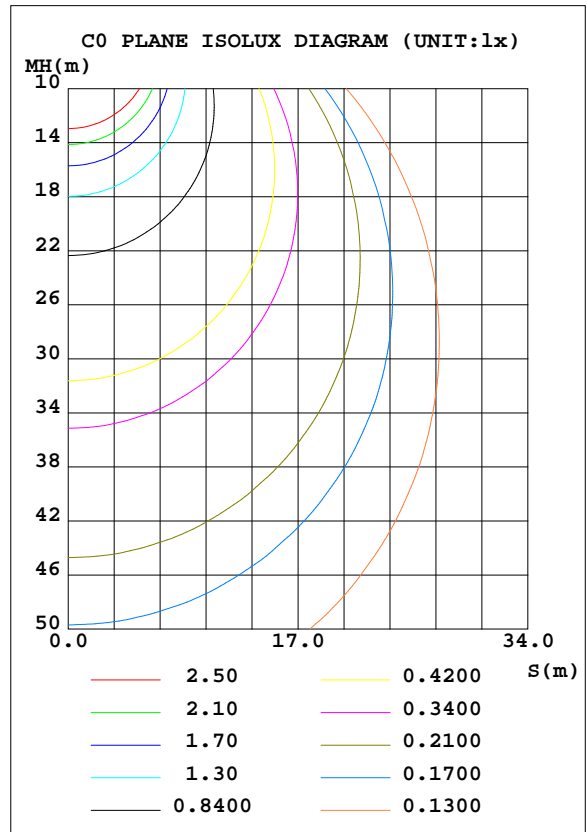
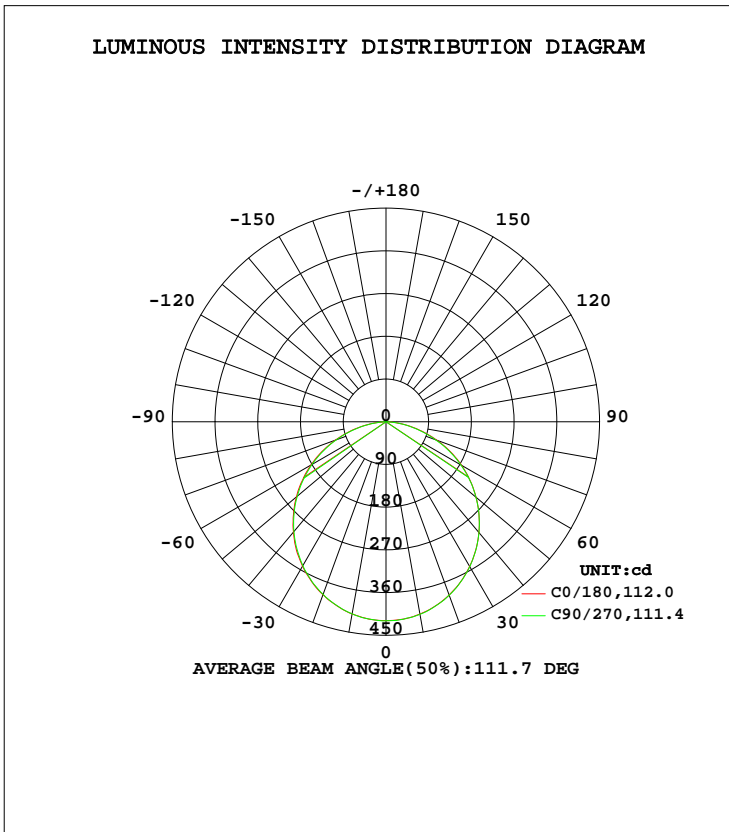


LUMINAIRE PHOTOMETRIC TEST REPORT

Test:U:120.02V I:0.1406A P:15.680W PF:0.9292 Freq:60.00Hz Lamp Flux:1184.72x1 lm		
NAME: LED Luminaire	TYPE: N/A	WEIGHT: N/A
SPEC.: ASD-MPR-7D15WH 5000K	DIM.: N/A	SERIAL No.: N/A
MFR.: ASD Lighting Corp	SUR.: N/A	Shielding Angle: N/A

DATA OF LAMP		PHOTOMETRIC DATA Eff: 75.56 lm/W			
MODEL	PSZ2GH240425002-10	I _{max} (cd)	419.9	S/MH(C0/180)	1.25
NOMINAL POWER(W)		LOR(%)	100.0	S/MH(C90/270)	1.25
RATED VOLTAGE(V)	120	TOTAL FLUX(lm)	1184.7	η UP, DN(C0-180)	0.1,49.8
NOMINAL FLUX(lm)	1184.72	CIE CLASS	DIRECT	η UP, DN(C180-360)	0.0,50.1
LAMPS INSIDE	1	η up(%)	0.1	CIBSE SHR NOM	1.25
TEST VOLTAGE(V)	120	η down(%)	99.9	CIBSE SHR MAX	1.35



C Range: 0 - 360DEG
 C Interval: 22.5DEG
 Test Speed: HIGH
 Temperature:25.0DEG
 Operators:Water
 Test Date:2024-05-03

γ Range: 0 - 180DEG
 γ Interval: 1.0DEG
 Test System:EVERFINE GO-R5000_V2 SYSTEM V2.00.446
 Humidity:39%
 Test Distance:2.519m [K=1.0000]
 Remarks:

ZONAL FLUX DIAGRAM

ZONAL FLUX DIAGRAM:

γ	C0	C45	C90	C135	C180	C225	C270	C315	γ	Φ zone	Φ total	%lum, lamp
10	411.4	410.8	410.8	410.7	411.5	411.4	412.0	412.1	0- 10	39.64	39.64	3.35,3.35
20	387.6	387.4	387.3	387.3	388.8	388.4	389.1	389.7	10- 20	113.3	153.0	12.9,12.9
30	351.8	350.8	350.2	350.4	352.3	352.0	352.7	353.0	20- 30	171.2	324.2	27.4,27.4
40	303.6	302.5	301.6	302.0	304.2	304.4	304.8	305.4	30- 40	205.7	529.9	44.7,44.7
50	246.0	245.1	244.1	244.5	247.5	247.5	247.3	248.4	40- 50	212.9	742.8	62.7,62.7
60	182.8	181.3	179.9	180.4	184.2	183.0	182.5	184.4	50- 60	192.2	935.0	78.9,78.9
70	113.9	113.3	111.8	111.9	113.9	112.0	111.4	114.0	60- 70	146.3	1081	91.3,91.3
80	45.93	45.30	43.67	43.71	46.27	45.01	44.44	46.58	70- 80	82.61	1164	98.2,98.2
90	0.0836	0.0785	0.0797	0.0801	0.0370	0.0395	0.0441	0.0545	80- 90	19.19	1183	99.9,99.9
100	0.1126	0.1166	0.1184	0.1210	0.0411	0.0391	0.0385	0.0377	90-100	0.0679	1183	99.9,99.9
110	0.1503	0.1573	0.1626	0.1633	0.0849	0.0782	0.0778	0.0774	100-110	0.1024	1183	99.9,99.9
120	0.2103	0.2242	0.2325	0.2337	0.1457	0.1345	0.1327	0.1310	110-120	0.1450	1183	99.9,99.9
130	0.3247	0.3444	0.3553	0.3554	0.2060	0.1919	0.1932	0.1843	120-130	0.1985	1184	99.9,99.9
140	0.5319	0.5657	0.5781	0.5375	0.2602	0.2278	0.2396	0.2407	130-140	0.2536	1184	99.9,99.9
150	0.7652	0.7954	0.8013	0.7869	0.3190	0.2896	0.3007	0.2887	140-150	0.2945	1184	100,100
160	0.9044	0.9597	0.9530	0.9459	0.4167	0.3742	0.4069	0.3881	150-160	0.2828	1184	100,100
170	0.8335	0.8920	0.8762	0.8560	0.5394	0.5125	0.5134	0.5098	160-170	0.1946	1185	100,100
180	0.6769	0.6781	0.6766	0.6772	0.6785	0.6802	0.6778	0.6787	170-180	0.0665	1185	100,100
DEG	LUMINOUS INTENSITY:cd									UNIT:lm		

Conical surface Flux(90deg): 637.21 lm

%lum = 53.8%
 %lamp = 53.8%

Conical surface Flux(120deg): 934.97 lm

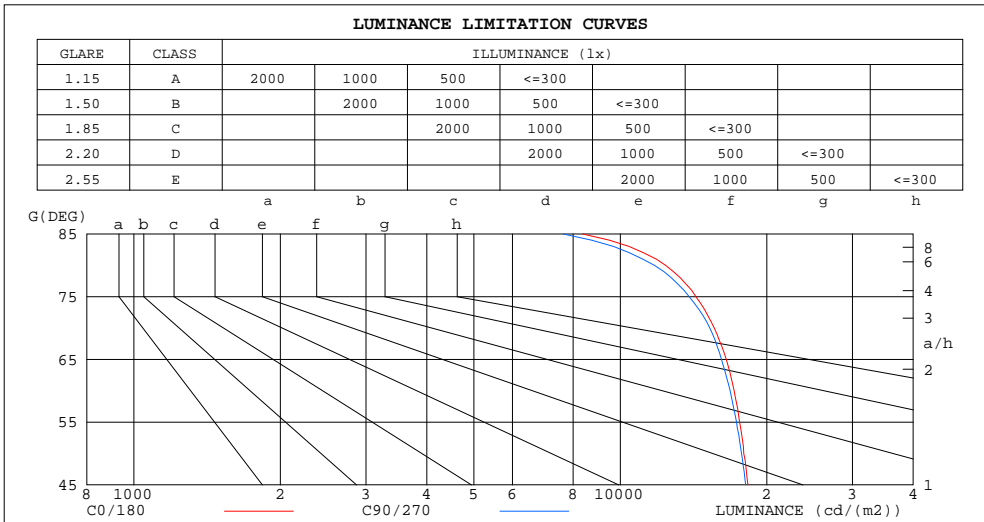
%lum = 78.9%
 %lamp = 78.9%

C Range: 0 - 360DEG
 C Interval: 22.5DEG
 Test Speed: HIGH
 Temperature:25.0DEG
 Operators:Water
 Test Date:2024-05-03

γ Range: 0 - 180DEG
 γ Interval: 1.0DEG
 Test System:EVERFINE GO-R5000_V2 SYSTEM V2.00.446
 Humidity:39%
 Test Distance:2.519m [K=1.0000]
 Remarks:

LUMINANCE LIMITATION CURVES

Test:U:120.02V I:0.1406A P:15.680W PF:0.9292 Freq:60.00Hz Lamp Flux:1184.72x1 lm		
NAME: LED Luminaire	TYPE: N/A	WEIGHT: N/A
SPEC.: ASD-MPR-7D15WH 5000K	DIM.: N/A	SERIAL No.: N/A
MFR.: ASD Lighting Corp	SUR.: N/A	Shielding Angle: N/A



LUMINANCE cd/(m2)		
G(DEG)	C0/180	C90/270
85	8371	7632
80	12396	11752
75	14303	13851
70	15604	15270
65	16512	16142
60	17138	16816
55	17585	17330
50	17937	17748
45	18290	18101

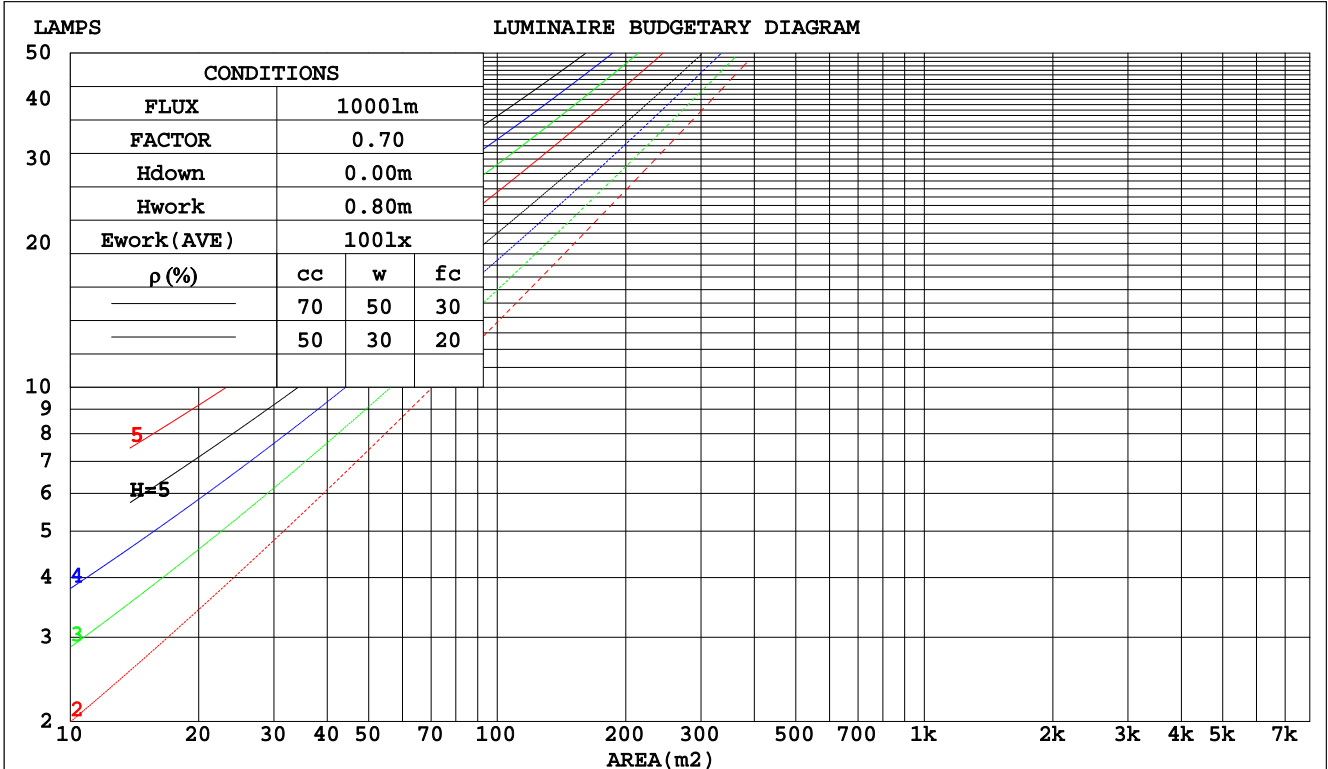
C Range: 0 - 360DEG
 C Interval: 22.5DEG
 Test Speed: HIGH
 Temperature: 25.0DEG
 Operators: Water
 Test Date: 2024-05-03

γ Range: 0 - 180DEG
 γ Interval: 1.0DEG
 Test System: EVERFINE GO-R5000_V2 SYSTEM V2.00.446
 Humidity: 39%
 Test Distance: 2.519m [K=1.0000]
 Remarks:

CU AND LUMINAIRE BUDGETARY ESTIMATE DIAGRAM

Test:U:120.02V I:0.1406A P:15.680W PF:0.9292 Freq:60.00Hz Lamp Flux:1184.72x1 lm		
NAME: LED Luminaire	TYPE: N/A	WEIGHT: N/A
SPEC.: ASD-MPR-7D15WH 5000K	DIM.: N/A	SERIAL No.: N/A
MFR.: ASD Lighting Corp	SUR.: N/A	Shielding Angle: N/A

pcc	80%			70%			50%			30%			10%			0
	50%	30%	10%	50%	30%	10%	50%	30%	10%	50%	30%	10%	50%	30%	10%	0
pw																0
pfc	20%			20%			20%			20%			20%			0
RCR	RCR:Room Cavity Ratio Coefficients of Utilization(CU)															
0.0	1.19	1.19	1.19	1.16	1.16	1.16	1.11	1.11	1.11	1.06	1.06	1.06	1.02	1.02	1.02	.00
1.0	1.04	.00	.96	1.02	.98	.94	.97	.94	.91	.93	.91	.88	.90	.88	.86	.84
2.0	.91	.84	.78	.89	.82	.77	.85	.80	.75	.82	.77	.73	.79	.75	.72	.70
3.0	.79	.71	.65	.78	.70	.64	.75	.68	.63	.72	.67	.62	.70	.65	.61	.59
4.0	.70	.62	.55	.69	.61	.54	.66	.59	.54	.64	.58	.53	.62	.57	.52	.50
5.0	.63	.54	.47	.62	.53	.47	.60	.52	.46	.58	.51	.46	.56	.50	.45	.43
6.0	.57	.48	.41	.56	.47	.41	.54	.46	.41	.52	.45	.40	.50	.44	.40	.38
7.0	.51	.42	.36	.50	.42	.36	.49	.41	.36	.47	.41	.36	.46	.40	.35	.33
8.0	.47	.38	.32	.46	.38	.32	.45	.37	.32	.43	.37	.32	.42	.36	.32	.30
9.0	.43	.35	.29	.42	.34	.29	.41	.34	.29	.40	.33	.29	.39	.33	.29	.27
10.0	.40	.32	.26	.39	.31	.26	.38	.31	.26	.37	.31	.26	.36	.30	.26	.24



C Range: 0 - 360DEG
 C Interval: 22.5DEG
 Test Speed: HIGH
 Temperature: 25.0DEG
 Operators: Water
 Test Date: 2024-05-03

γ Range: 0 - 180DEG
 γ Interval: 1.0DEG
 Test System: EVERFINE GO-R5000_V2 SYSTEM V2.00.446
 Humidity: 39%
 Test Distance: 2.519m [K=1.0000]
 Remarks:

WEC AND CCEC

Test:U:120.02V I:0.1406A P:15.680W PF:0.9292 Freq:60.00Hz		
Lamp Flux:1184.72x1 lm		
NAME: LED Luminaire	TYPE: N/A	WEIGHT: N/A
SPEC.: ASD-MPR-7D15WH 5000K	DIM.: N/A	SERIAL No.: N/A
MFR.:ASD Lighting Corp	SUR.: N/A	Shielding Angle: N/A

ρcc	80%			70%			50%			30%			10%			0
ρw	50%	30%	10%	50%	30%	10%	50%	30%	10%	50%	30%	10%	50%	30%	10%	0
ρfc	20%			20%			20%			20%			20%			0
RCR	RCR:Room Cavity Ratio						Wall Exitance Coefficients(WEC)									
0.0																
1.0	.307	.175	.055	.300	.171	.054	.287	.164	.052	.274	.158	.051	.263	.152	.049	
2.0	.290	.159	.049	.284	.156	.048	.272	.151	.047	.261	.147	.046	.251	.142	.045	
3.0	.269	.143	.043	.264	.141	.042	.253	.137	.042	.243	.133	.041	.235	.130	.040	
4.0	.249	.129	.038	.244	.127	.038	.234	.124	.037	.226	.121	.037	.218	.118	.036	
5.0	.230	.117	.034	.226	.116	.034	.217	.113	.033	.210	.111	.033	.203	.108	.033	
6.0	.213	.107	.031	.209	.106	.030	.202	.104	.030	.195	.101	.030	.189	.099	.030	
7.0	.199	.098	.028	.195	.097	.028	.189	.095	.027	.182	.094	.027	.177	.092	.027	
8.0	.185	.091	.025	.182	.090	.025	.177	.088	.025	.171	.087	.025	.166	.085	.025	
9.0	.174	.084	.023	.171	.083	.023	.166	.082	.023	.161	.081	.023	.156	.079	.023	
10.0	.163	.078	.022	.161	.078	.022	.156	.077	.022	.152	.075	.021	.148	.074	.021	

ρcc	80%			70%			50%			30%			10%			0
ρw	50%	30%	10%	50%	30%	10%	50%	30%	10%	50%	30%	10%	50%	30%	10%	0
ρfc	20%			20%			20%			20%			20%			0
RCR	RCR:Room Cavity Ratio						Ceiling Cavity Exitance Coefficients(CCEC)									
0.0	.192	.192	.192	.164	.164	.164	.112	.112	.112	.064	.064	.064	.021	.021	.021	
1.0	.181	.157	.136	.155	.135	.117	.106	.093	.081	.061	.054	.047	.020	.017	.015	
2.0	.173	.133	.099	.148	.114	.086	.102	.079	.060	.059	.046	.035	.019	.015	.011	
3.0	.165	.115	.075	.142	.100	.065	.097	.069	.046	.056	.040	.027	.018	.013	.009	
4.0	.158	.102	.059	.135	.088	.052	.093	.061	.036	.054	.036	.022	.017	.012	.007	
5.0	.150	.092	.048	.129	.079	.042	.089	.055	.030	.052	.033	.018	.017	.011	.006	
6.0	.143	.083	.040	.123	.072	.035	.085	.050	.025	.049	.030	.015	.016	.010	.005	
7.0	.136	.076	.034	.117	.066	.030	.081	.046	.021	.047	.027	.013	.015	.009	.004	
8.0	.130	.071	.030	.112	.061	.026	.077	.043	.018	.045	.025	.011	.015	.008	.004	
9.0	.124	.066	.026	.107	.057	.023	.074	.040	.016	.043	.024	.010	.014	.008	.003	
10.0	.118	.061	.024	.102	.053	.021	.071	.037	.015	.041	.022	.009	.013	.007	.003	

C Range: 0 - 360DEG
 C Interval: 22.5DEG
 Test Speed: HIGH
 Temperature:25.0DEG
 Operators:Water
 Test Date:2024-05-03

γ Range: 0 - 180DEG
 γ Interval: 1.0DEG
 Test System:EVERFINE GO-R5000_V2 SYSTEM V2.00.446
 Humidity:39%
 Test Distance:2.519m [K=1.0000]
 Remarks:

UGR(Unified Glare Rating) Table

Test:U:120.02V I:0.1406A P:15.680W PF:0.9292 Freq:60.00Hz Lamp Flux:1184.72x1 lm		
NAME: LED Luminaire	TYPE: N/A	WEIGHT: N/A
SPEC.: ASD-MPR-7D15WH 5000K	DIM.: N/A	SERIAL No.: N/A
MFR.:ASD Lighting Corp	SUR.: N/A	Shielding Angle: N/A

ceiling/cavity	0.7	0.7	0.5	0.5	0.3	0.7	0.7	0.5	0.5	0.3
walls	0.5	0.3	0.5	0.3	0.3	0.5	0.3	0.5	0.3	0.3
working plane	0.2	0.2	0.2	0.2	0.2	0.2	0.2	0.2	0.2	0.2
Room dimensions	Viewed crosswise					Viewed endwise				
x = 2H y = 2H	22.3	23.8	22.5	24.0	24.2	22.2	23.7	22.5	23.9	24.1
3H	23.8	25.2	24.1	25.4	25.7	23.7	25.1	24.0	25.3	25.6
4H	24.4	25.7	24.7	26.0	26.2	24.3	25.6	24.6	25.9	26.1
6H	24.8	26.0	25.1	26.3	26.6	24.7	25.9	25.0	26.2	26.5
8H	24.9	26.1	25.2	26.4	26.7	24.8	26.0	25.1	26.3	26.6
12H	24.9	26.1	25.3	26.4	26.7	24.8	26.0	25.1	26.2	26.6
4H 2H	22.9	24.2	23.2	24.5	24.7	22.8	24.1	23.1	24.4	24.7
3H	24.6	25.7	24.9	26.0	26.4	24.5	25.7	24.9	26.0	26.3
4H	25.3	26.4	25.7	26.7	27.0	25.2	26.3	25.6	26.6	26.9
6H	25.8	26.8	26.2	27.1	27.5	25.7	26.7	26.1	27.0	27.4
8H	26.0	26.9	26.4	27.2	27.6	25.8	26.7	26.3	27.1	27.5
12H	26.1	26.9	26.5	27.3	27.7	25.9	26.7	26.3	27.1	27.5
8H 4H	25.5	26.4	26.0	26.8	27.2	25.5	26.3	25.9	26.7	27.1
6H	26.2	26.9	26.7	27.4	27.8	26.1	26.8	26.5	27.2	27.7
8H	26.4	27.1	26.9	27.5	28.0	26.3	27.0	26.8	27.4	27.8
12H	26.6	27.1	27.1	27.6	28.1	26.4	27.0	26.9	27.4	27.9
12H 4H	25.6	26.4	26.0	26.8	27.2	25.5	26.3	25.9	26.7	27.1
6H	26.3	26.9	26.7	27.3	27.8	26.2	26.8	26.6	27.2	27.7
8H	26.5	27.1	27.0	27.5	28.0	26.4	27.0	26.9	27.4	27.9
Variations with the observer position at spacings(CIE Pub.117):										
S = 1.0H	+ 0.2 / - 0.2					+ 0.2 / - 0.2				
1.5H	+ 0.2 / - 0.3					+ 0.2 / - 0.3				
2.0H	+ 0.2 / - 0.3					+ 0.2 / - 0.3				

CIE Pub.117, 1185 lm Total Lamp Luminous Flux Correct (8log(F/F0) = 0.6)
Area: 0.0213716 m2

C Range: 0 - 360DEG
C Interval: 22.5DEG
Test Speed: HIGH
Temperature:25.0DEG
Operators:Water
Test Date:2024-05-03

γ Range: 0 - 180DEG
γ Interval: 1.0DEG
Test System:EVERFINE GO-R5000_V2 SYSTEM V2.00.446
Humidity:39%
Test Distance:2.519m [K=1.0000]
Remarks:

UTILIZATION FACTORS TABLE

Test:U:120.02V I:0.1406A P:15.680W PF:0.9292 Freq:60.00Hz Lamp Flux:1184.72x1 lm		
NAME: LED Luminaire	TYPE: N/A	WEIGHT: N/A
SPEC.: ASD-MPR-7D15WH 5000K	DIM.: N/A	SERIAL No.: N/A
MFR.:ASD Lighting Corp	SUR.: N/A	Shielding Angle: N/A

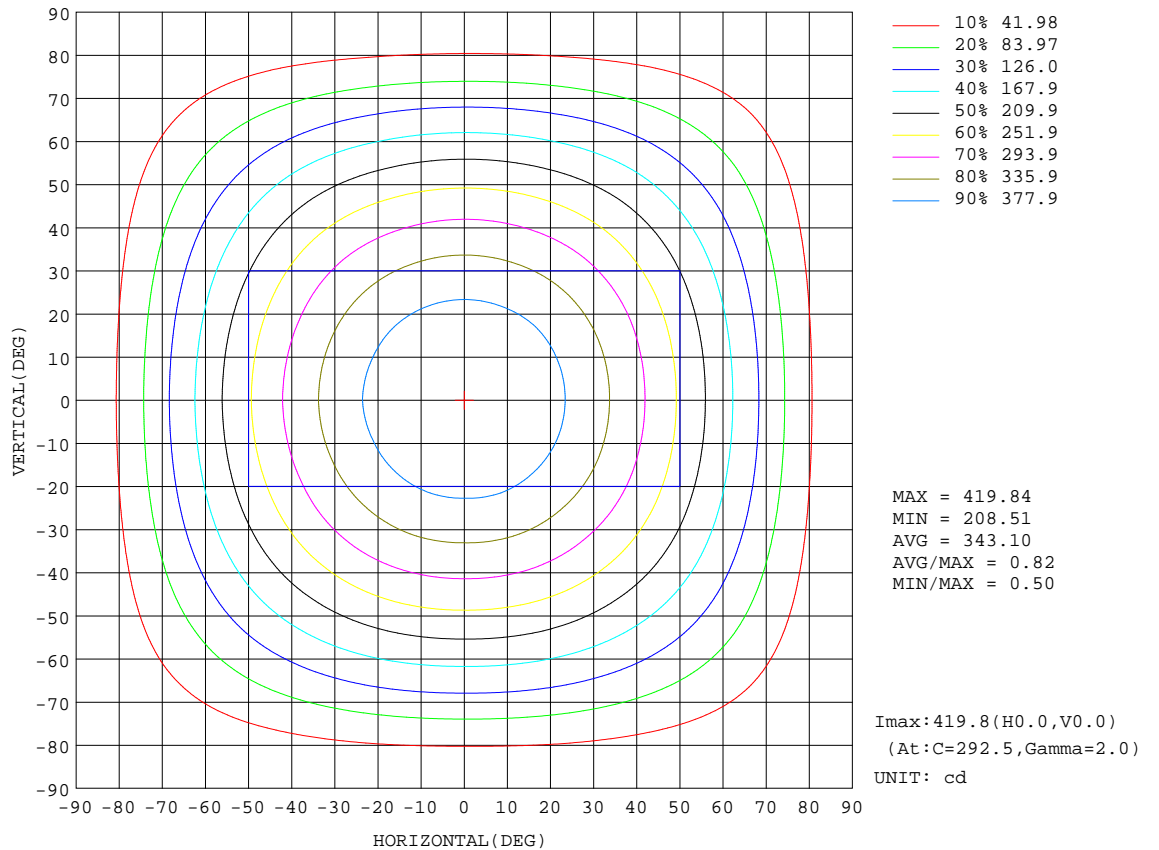
REFLECTANCE										
Ceiling	0.8	0.8	0.8	0.7	0.7	0.7	0.5	0.5	0.5	0
Walls	0.7	0.5	0.3	0.7	0.5	0.3	0.7	0.5	0.3	0
Working plane	0.2	0.2	0.2	0.2	0.2	0.2	0.2	0.2	0.2	0
ROOM INDEX	UTILIZATION FACTORS(PERCENT) $k(RI) \times RCR = 5$									
k = 0.60	58	46	39	57	46	39	56	45	39	32
0.80	68	56	49	67	56	48	65	55	48	41
1.00	76	65	58	75	64	57	73	66	57	50
1.25	83	73	66	82	72	65	79	71	64	57
1.50	88	78	71	86	77	71	83	76	70	62
2.00	95	87	80	93	85	79	90	83	78	70
2.50	99	91	85	97	90	84	93	87	82	74
3.00	102	95	90	100	94	89	96	91	87	78
4.00	106	101	96	104	99	95	100	95	92	83
5.00	109	104	100	106	102	98	102	98	95	86
ROOM INDEX	UF(total)									Direct
According to DIN EN 13032-2 2004			Suspended				SHRNOM = 1.25			

C Range: 0 - 360DEG
 C Interval: 22.5DEG
 Test Speed: HIGH
 Temperature:25.0DEG
 Operators:Water
 Test Date:2024-05-03

γ Range: 0 - 180DEG
 γ Interval: 1.0DEG
 Test System:EVERFINE GO-R5000_V2 SYSTEM V2.00.446
 Humidity:39%
 Test Distance:2.519m [K=1.0000]
 Remarks:

ISOCANDELA DIAGRAM

Test:U:120.02V I:0.1406A P:15.680W PF:0.9292 Freq:60.00Hz Lamp Flux:1184.72x1 lm		
NAME: LED Luminaire	TYPE: N/A	WEIGHT: N/A
SPEC.: ASD-MPR-7D15WH 5000K	DIM.: N/A	SERIAL No.: N/A
MFR.: ASD Lighting Corp	SUR.: N/A	Shielding Angle: N/A



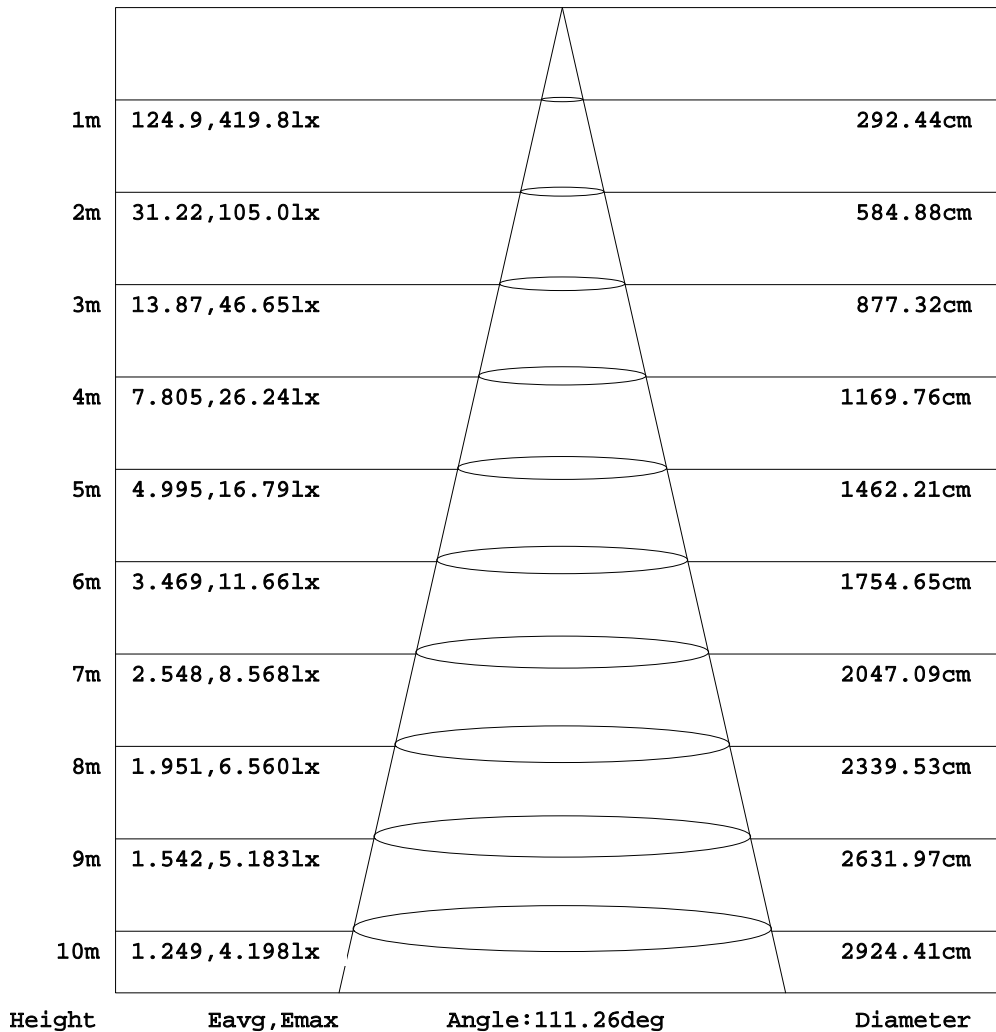
C Range: 0 - 360DEG
 C Interval: 22.5DEG
 Test Speed: HIGH
 Temperature: 25.0DEG
 Operators: Water
 Test Date: 2024-05-03

γ Range: 0 - 180DEG
 γ Interval: 1.0DEG
 Test System: EVERFINE GO-R5000_V2 SYSTEM V2.00.446
 Humidity: 39%
 Test Distance: 2.519m [K=1.0000]
 Remarks:

AAI Figure

Test:U:120.02V I:0.1406A P:15.680W PF:0.9292 Freq:60.00Hz Lamp Flux:1184.72x1 lm		
NAME: LED Luminaire	TYPE: N/A	WEIGHT: N/A
SPEC.: ASD-MPR-7D15WH 5000K	DIM.: N/A	SERIAL No.: N/A
MFR.: ASD Lighting Corp	SUR.: N/A	Shielding Angle: N/A

Flux out:862.3 lm



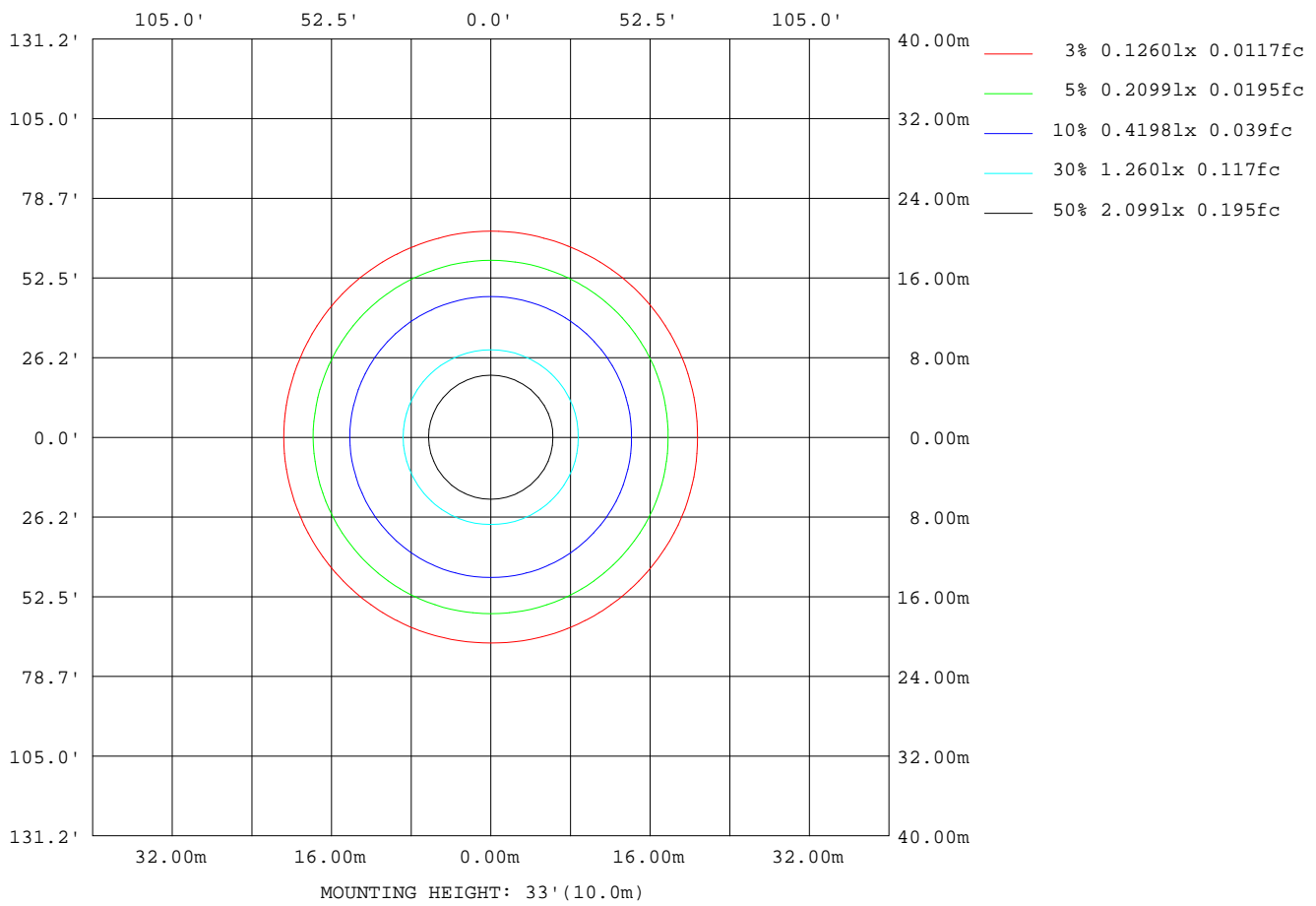
Note: The Curves indicate the illuminated area and the average illumination when the luminaire is at different distance.

C Range: 0 - 360DEG
 C Interval: 22.5DEG
 Test Speed: HIGH
 Temperature: 25.0DEG
 Operators: Water
 Test Date: 2024-05-03

γ Range: 0 - 180DEG
 γ Interval: 1.0DEG
 Test System: EVERFINE GO-R5000_V2 SYSTEM V2.00.446
 Humidity: 39%
 Test Distance: 2.519m [K=1.0000]
 Remarks:

ISOLUX DIAGRAM

Test:U:120.02V I:0.1406A P:15.680W PF:0.9292 Freq:60.00Hz Lamp Flux:1184.72x1 lm		
NAME: LED Luminaire	TYPE: N/A	WEIGHT: N/A
SPEC.: ASD-MPR-7D15WH 5000K	DIM.: N/A	SERIAL No.: N/A
MFR.: ASD Lighting Corp	SUR.: N/A	Shielding Angle: N/A



C Range: 0 - 360DEG
 C Interval: 22.5DEG
 Test Speed: HIGH
 Temperature: 25.0DEG
 Operators: Water
 Test Date: 2024-05-03

γ Range: 0 - 180DEG
 γ Interval: 1.0DEG
 Test System: EVERFINE GO-R5000_V2 SYSTEM V2.00.446
 Humidity: 39%
 Test Distance: 2.519m [K=1.0000]
 Remarks:

LED Avg.L Report

Test:U:120.02V I:0.1406A P:15.680W PF:0.9292 Freq:60.00Hz Lamp Flux:1184.72x1 lm		
NAME: LED Luminaire	TYPE: N/A	WEIGHT: N/A
SPEC.: ASD-MPR-7D15WH 5000K	DIM.: N/A	SERIAL No.: N/A
MFR.: ASD Lighting Corp	SUR.: N/A	Shielding Angle: N/A

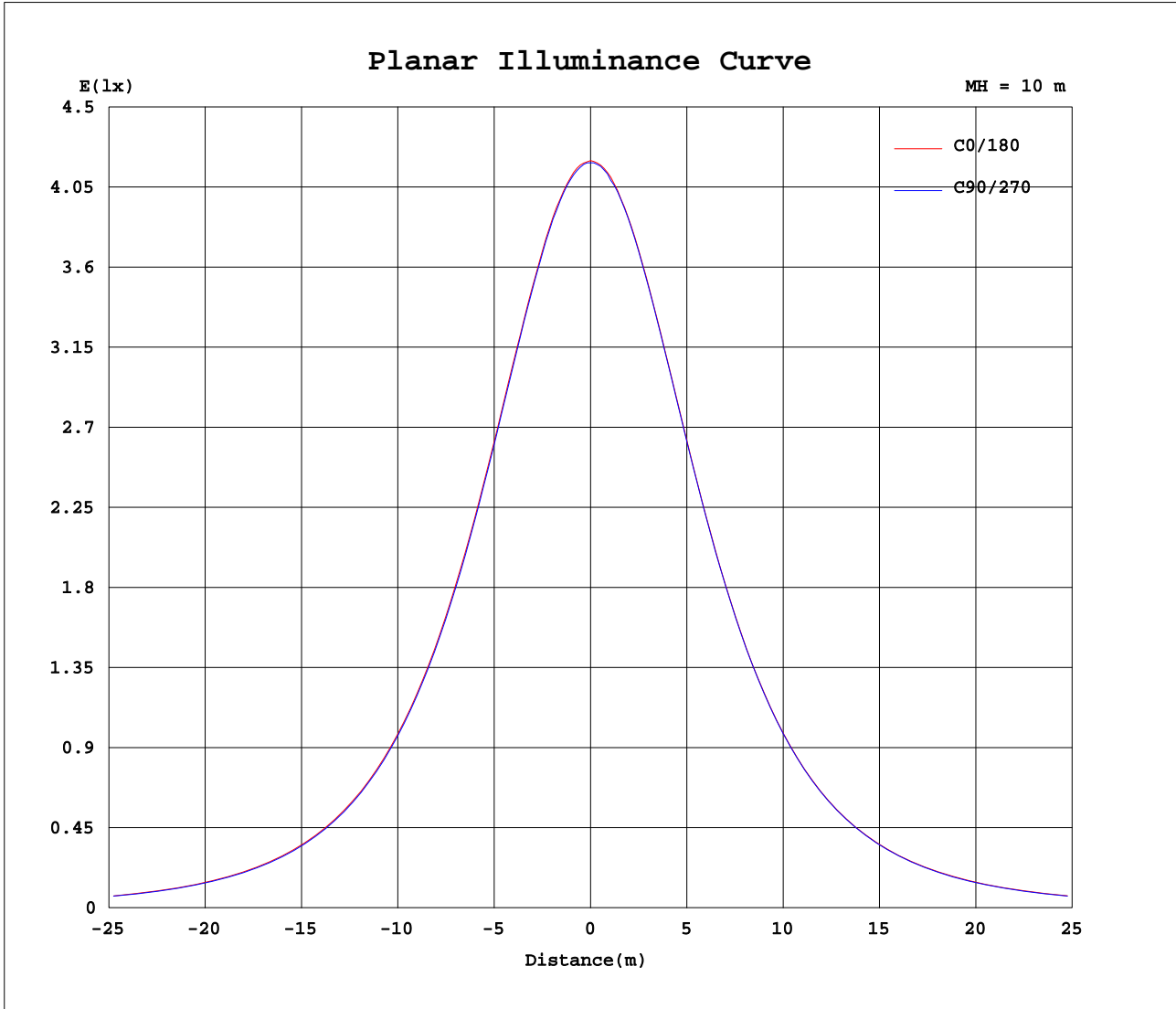
AvgL	cd/m2
L_0~180(65)av	16546
L_0~180(75)av	14304
L_0~180(85)av	8668
L_90~270(65)av	16247
L_90~270(75)av	13884
L_90~270(85)av	8147
L_45(65)av	16399
L_45(75)av	14104
L_45(85)av	8428

Standard: GB/T 29293-2012

C Range: 0 - 360DEG
 C Interval: 22.5DEG
 Test Speed: HIGH
 Temperature:25.0DEG
 Operators:Water
 Test Date:2024-05-03

γ Range: 0 - 180DEG
 γ Interval: 1.0DEG
 Test System:EVERFINE GO-R5000_V2 SYSTEM V2.00.446
 Humidity:39%
 Test Distance:2.519m [K=1.0000]
 Remarks:

Planar Illuminance Curve



C Range: 0 - 360DEG
 C Interval: 22.5DEG
 Test Speed: HIGH
 Temperature: 25.0DEG
 Operators: Water
 Test Date: 2024-05-03

γ Range: 0 - 180DEG
 γ Interval: 1.0DEG
 Test System: EVERFINE GO-R5000_V2 SYSTEM V2.00.446
 Humidity: 39%
 Test Distance: 2.519m [K=1.0000]
 Remarks:

LUMINOUS DISTRIBUTION INTENSITY DATA

Test:U:120.02V I:0.1406A P:15.680W PF:0.9292 Freq:60.00Hz Lamp Flux:1184.72x1 lm		
NAME: LED Luminaire	TYPE: N/A	WEIGHT: N/A
SPEC.: ASD-MPR-7D15WH 5000K	DIM.: N/A	SERIAL No.: N/A
MFR.: ASD Lighting Corp	SUR.: N/A	Shielding Angle: N/A

Table--1

UNIT: cd

C(DEG) γ (DEG)	0	22.5	45	67.5	90	112.5	135	157.5	180	202.5	225	247.5	270	292.5	315	337.5			
0	419	419	419	419	419	419	419	419	419	419	419	419	419	419	419	419			
5	417	417	417	417	417	417	417	417	417	417	417	417	418	417	418	417			
10	411	411	411	411	411	411	411	411	411	412	411	412	412	412	412	412			
15	401	402	401	402	401	401	401	401	402	402	402	402	402	402	403	402			
20	388	388	387	388	387	388	387	388	389	389	388	388	389	389	390	389			
25	371	372	371	371	370	370	371	371	372	372	372	371	372	372	373	373			
30	352	352	351	351	350	350	350	351	352	352	352	351	353	352	353	353			
35	329	329	328	328	327	328	327	328	330	330	330	329	330	330	331	330			
40	304	304	303	303	302	302	302	303	304	304	304	304	305	304	305	305			
45	276	277	275	275	274	274	274	275	277	277	277	276	277	277	278	278			
50	246	247	245	245	244	245	245	245	248	247	247	246	247	247	248	248			
55	215	216	214	214	213	213	213	214	217	216	216	215	216	216	217	217			
60	183	183	181	181	180	180	180	182	184	183	183	181	182	183	184	185			
65	149	150	148	147	146	147	147	148	150	148	148	146	148	148	150	150			
70	114	114	113	112	112	112	112	112	114	113	112	111	111	112	114	115			
75	79.0	79.3	78.3	77.8	76.7	77.1	76.9	77.4	79.3	78.4	77.4	76.4	76.9	77.7	79.4	80.5			
80	45.9	46.3	45.3	44.7	43.7	44.1	43.7	44.4	46.3	45.4	45.0	43.8	44.4	45.0	46.6	47.4			
85	15.6	16.6	15.2	15.7	14.2	15.0	14.0	15.0	16.7	15.6	16.3	15.0	16.1	15.7	17.3	17.0			
90	0.08	0.09	0.08	0.08	0.08	0.08	0.08	0.08	0.04	0.03	0.04	0.03	0.04	0.04	0.05	0.07			
95	0.10	0.09	0.10	0.09	0.10	0.10	0.10	0.10	0.03	0.03	0.02	0.03	0.02	0.03	0.03	0.03			
100	0.11	0.11	0.12	0.12	0.12	0.12	0.12	0.12	0.04	0.04	0.04	0.04	0.04	0.04	0.04	0.04			
105	0.13	0.13	0.13	0.13	0.14	0.14	0.14	0.13	0.06	0.06	0.06	0.06	0.06	0.06	0.06	0.06			
110	0.15	0.15	0.16	0.16	0.16	0.16	0.16	0.15	0.08	0.08	0.08	0.08	0.08	0.08	0.08	0.08			
115	0.17	0.18	0.19	0.19	0.19	0.19	0.19	0.18	0.11	0.11	0.10	0.11	0.10	0.11	0.10	0.10			
120	0.21	0.22	0.22	0.23	0.23	0.23	0.23	0.22	0.15	0.14	0.13	0.14	0.13	0.13	0.13	0.13			
125	0.26	0.27	0.28	0.28	0.29	0.28	0.29	0.27	0.18	0.18	0.16	0.16	0.16	0.16	0.16	0.16			
130	0.32	0.34	0.34	0.35	0.36	0.35	0.36	0.35	0.21	0.21	0.19	0.18	0.19	0.19	0.18	0.18			
135	0.41	0.43	0.44	0.44	0.45	0.44	0.44	0.44	0.23	0.23	0.21	0.20	0.22	0.22	0.22	0.21			
140	0.53	0.56	0.57	0.56	0.58	0.56	0.54	0.57	0.26	0.26	0.23	0.22	0.24	0.23	0.24	0.23			
145	0.65	0.68	0.69	0.69	0.69	0.70	0.66	0.70	0.29	0.29	0.25	0.25	0.25	0.25	0.25	0.25			
150	0.77	0.78	0.80	0.80	0.80	0.79	0.79	0.81	0.32	0.32	0.29	0.30	0.30	0.28	0.29	0.28			
155	0.86	0.89	0.90	0.89	0.90	0.87	0.89	0.91	0.36	0.36	0.33	0.34	0.36	0.35	0.34	0.33			
160	0.90	0.94	0.96	0.95	0.95	0.93	0.95	0.97	0.42	0.42	0.37	0.38	0.41	0.41	0.39	0.38			
165	0.89	0.94	0.95	0.95	0.95	0.90	0.93	0.96	0.48	0.48	0.43	0.44	0.45	0.45	0.45	0.42			
170	0.83	0.88	0.89	0.88	0.88	0.86	0.86	0.90	0.54	0.52	0.51	0.50	0.51	0.52	0.51	0.51			
175	0.78	0.79	0.85	0.84	0.83	0.80	0.80	0.81	0.59	0.60	0.61	0.62	0.62	0.61	0.59	0.60			
180	0.68	0.68	0.68	0.68	0.68	0.68	0.68	0.68	0.68	0.68	0.68	0.68	0.68	0.68	0.68	0.68			

C Range: 0 - 360DEG
 C Interval: 22.5DEG
 Test Speed: HIGH
 Temperature: 25.0DEG
 Operators: Water
 Test Date: 2024-05-03

γ Range: 0 - 180DEG
 γ Interval: 1.0DEG
 Test System: EVERFINE GO-R5000_V2 SYSTEM V2.00.446
 Humidity: 39%
 Test Distance: 2.519m [K=1.0000]
 Remarks: