



LED COMMERCIAL DOWNLIGHT

► **DESIGN & OPTIONS** - LED COMMERCIAL DOWNLIGHT is equipped with a simple switch that is used to adjust CCT and wattage. The CCT options are 2,700K, 3,000K, 3,500K, 4,000K, or 5,000K, while the wattage options depend on the size of the downlight. They come in 4", 6", 8" and 10" sizes and WHITE or BLACK finishes with a classic, low-profile design and a smooth trim. It is designed to operate on 120-277V with a 0-10V dimmable driver.



The battery back-up kit provides 90 minutes of power in case of emergency.

► **INSTALLATION** - With everything you need included in one set, installation has never been easier. The wiring and spring-loaded clips ensure a snug fit to the surface and the safety cable eliminates the possibility of an incident during installation. Refer to install instructions for detailed steps.

► **APPLICATION** - Install LED COMMERCIAL DOWNLIGHT to your ceiling for bright light in your hallway, corridor, or any other commercial space with a high ceiling. It is suitable for Wet locations, making it perfect for spaces with humidity requirements.

► **ENERGY SAVING & EFFICIENCY** - With a lifespan of 50,000 hours, these fixtures are made to last decades under normal operation! This fixture can cut your electric bill by up to 80% instantly and will save you a significant amount of money in its lifetime.

► **CERTIFICATION & WARRANTY** - Buy with confidence: ASD provides a 5-year limited warranty along with UL certification to guarantee top quality products and safety!

Energy Star classification allow participation in rebates; please check the rebate programs available in your state.

Catalog number	
Notes	
Type	



Finish:

Model	Size	Watts	Voltage	Dimmable	Lumens	CCT	Finish	Dimensions (LxH)	Cord
ASD-CDL7-4DA13AC	4 inch	7/10/13W	120-277 V	0-10 V	600/850/1,050 lm	5CCT (2,700/3,000/3,500/4,000/5,000 K)	White	5-3/8" x 3"	1.6 ft
ASD-CDL7-6DA22AC	6 inch	10/15/22W	120-277 V	0-10 V	900/1,300/1,850 lm	5CCT (2,700/3,000/3,500/4,000/5,000 K)	White	8-1/4" x 3-7/8"	1.6 ft
ASD-CDL7-6DA22AC-BK	6 inch	10/15/22W	120-277 V	0-10 V	900/1,300/1,850 lm	5CCT (2,700/3,000/3,500/4,000/5,000 K)	Black	8-1/4" x 3-7/8"	1.6 ft
ASD-CDL7-8DA30AC	8 inch	12/20/30W	120-277 V	0-10 V	1,050/1,700/2,400 lm	5CCT (2,700/3,000/3,500/4,000/5,000 K)	White	10-1/4" x 4-1/2"	1.6 ft
ASD-CDL7-8DA30AC-BK	8 inch	12/20/30W	120-277 V	0-10 V	1,050/1,700/2,400 lm	5CCT (2,700/3,000/3,500/4,000/5,000 K)	Black	10-1/4" x 4-1/2"	1.6 ft
ASD-CDL7-10DA40AC	10 inch	20/30/40W	120-277 V	0-10 V	1,800/2,400/3,000 lm	5CCT (2,700/3,000/3,500/4,000/5,000 K)	White	11-1/4" x 4-7/8"	1.6 ft

ORDERING INFORMATION

Model	UPC	Pcs. per carton	Carton size	Carton weight	GTIN 14
ASD-CDL7-4DA13AC	810050736121	8	16.1" x 14.4" x 7.1"	6.6 lb	30810050736122
ASD-CDL7-6DA22AC	810050736022	8	19.1" x 18.1" x 10"	14.8 lb	30810050736023
ASD-CDL7-6DA22AC-BK	810050739443	8	19.1" x 18.1" x 10"	14.8 lb	10810050739440
ASD-CDL7-8DA30AC	810050736039	4	18.9" x 11.4" x 11.6"	9.5 lb	10810050736036
ASD-CDL7-8DA30AC-BK	810050739450	4	18.9" x 11.4" x 11.6"	9.5 lb	10810050739457
ASD-CDL7-10DA40AC	810050736046	4	23.6" x 12.6" x 13"	11.5 lb	10810050736043

ACCESSORIES:

Model	Name	UPC	Pcs. per carton	Carton size	Carton weight	GTIN 14
BLD-HM15D	Battery back-up kit 15W	810050734882	10	18.5" x 13.4" x 11.8"	25.6 lb	10810050734889

For most up-to-date spec sheets please refer to asd-lighting.com

ASD LIGHTING CORP

E-mail: orders@asd-lighting.com | Web site: www.asd-lighting.com





LED COMMERCIAL DOWNLIGHT

PRODUCT SPECIFICATIONS:

Construction & Materials				Electrical system			
Housing		Aluminum		Input voltage		120-277 V	
Lens		PC		Max input current	ASD-CDL7-4DA13AC 0.15 A		
Finish		White, Black			ASD-CDL7-6DA22AC 0.23 A		
Weight	ASD-CDL7-4DA13AC		0.7 lb (0.3 kg)		ASD-CDL7-6DA22AC-BK 0.3 A		
	ASD-CDL7-6DA22AC		1.5 lb (0.7 kg)		ASD-CDL7-8DA30AC 0.5 A		
	ASD-CDL7-6DA22AC-BK		1.9 lb (0.9 kg)		ASD-CDL7-8DA30AC-BK 0.5 A		
	ASD-CDL7-8DA30AC		2 lb (0.9 kg)	Inrush current (Action time)	ASD-CDL7-10DA40AC 30 A (0.3 S)		
	ASD-CDL7-8DA30AC-BK				ASD-CDL7-6DA22AC 43 A (0.3 S)		
ASD-CDL7-10DA40AC			ASD-CDL7-6DA22AC-BK 37 A (0.3 S)				
			ASD-CDL7-8DA30AC-BK 50 A (0.3 S)				
			ASD-CDL7-10DA40AC				
Environmental system				Off state power			
Work environment		Suitable for Wet Locations, IP43		0W			
Operating temperature		-13°F to 113°F (-25°C to 45°C)		Power consumption	ASD-CDL7-4DA13AC 7/10/13W		
L-70 Life		> 50,000 hrs			ASD-CDL7-6DA22AC 10/15/22W		
					ASD-CDL7-6DA22AC-BK 12/20/30W		
					ASD-CDL7-8DA30AC 20/30/40W		
					ASD-CDL7-8DA30AC-BK 20/30/40W		
				ASD-CDL7-10DA40AC			
Optical system				Power factor			
Luminous flux	ASD-CDL7-4DA13AC		600/850/1,050 lm	> 0.9			
	ASD-CDL7-6DA22AC		900/1,300/1,850 lm	Output voltage	ASD-CDL7-4DA13AC 36 V		
	ASD-CDL7-6DA22AC-BK		1,050/1,700/2,400 lm		ASD-CDL7-6DA22AC 30-42 V		
	ASD-CDL7-8DA30AC		1,800/2,400/3,000 lm		ASD-CDL7-6DA22AC-BK 36 V		
	ASD-CDL7-8DA30AC-BK				ASD-CDL7-8DA30AC 0.33 A		
ASD-CDL7-10DA40AC			ASD-CDL7-8DA30AC-BK 0.55 A				
Color temperature	5CCT (2,700/3,000/3,500/4,000/5,000 K)			Max output current	ASD-CDL7-8DA30AC 0.75 A		
CRI	> 90				ASD-CDL7-8DA30AC-BK 1 A		
Dimming compatible controls					Surge protection DM/CM		
Brand	Lutron		Leviton		2.5 kV / 2.5 kV		
Models	DVSTV-WH	DVSTV-BL	DS 710-10Z				
	DVSTV-BR	DVSTV-AL	AWSMT-7DW				
	DVSTV-GR	DVSTV-IV					
	DVSTV-LA						
Regular and voluntary certifications							
5-year limited warranty							
Energy Star listed							
UL certified E473854							

PACKAGE CONTENTS:

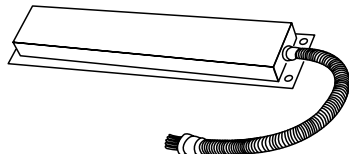
Description	Q-ty
LED Commercial Downlight Fixture	1
Wire nut (A)	3
Box	1



ACCESSORIES (sold separately):

Battery back-up kit 15W

BLD-HM15D



BATTERY BACK-UP KIT INFORMATION

BLD-HM15D sold separately:

Specifications	
Input voltage	100-347 Vac, 50/60 Hz
Input current	≤ 100 mA
Output voltage	≤ 175 V DC
Output power	15W
Lumen	1,000 lm
Application	< 100W (0/1-10 V dimmable fixture)
Ambient temperature	0°C to 50°C (30°F to 122°F)

For most up-to-date spec sheets please refer to asd-lighting.com

ASD LIGHTING CORP

E-mail: orders@asd-lighting.com | Web site: www.asd-lighting.com





LED COMMERCIAL DOWNLIGHT

INSTALLATION GUIDE

IMPORTANT SAFETY INFORMATION:

Please read all the instructions below before installation.

- Make sure that the supply voltage corresponds to the rated product voltage.
- The product must be installed by a qualified electrician in accordance with the National Electrical Code and corresponding local codes.
- If the product is damaged, do not use it.

⚠ WARNING

RISK OF PERSONAL INJURY – READ and follow all WARNINGS and installation instructions. Keep or give to the owner for future reference.

Risk of cuts: Wear gloves to prevent cuts or abrasions when removing from carton, handling, installing, and maintaining this product.

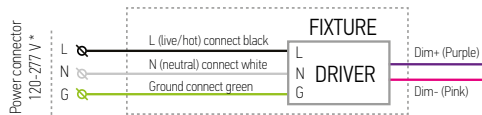
Risk of electric shock: This product must be installed in accordance with the applicable installation code by a person familiar with the construction and operation of the product and the hazards involved.

Risk of Fire: Minimum 194°F supply conductors. Consult a qualified electrician to ensure correct branch circuit conductor.

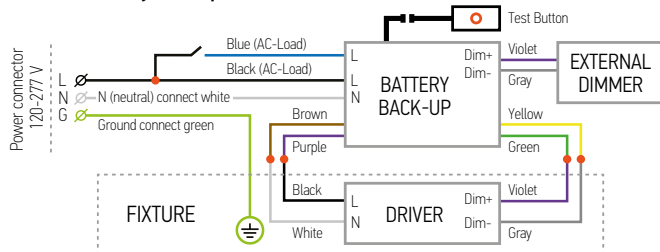
ASD® assumes no responsibility for claims arising out of improper or careless installation or handling of this product.

ELECTRICAL SCHEMATIC DIAGRAM:

CDL7

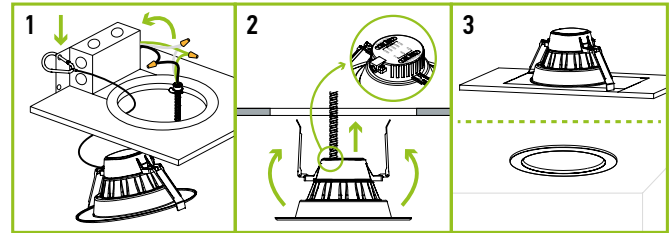


CDL7 with battery back-up kit



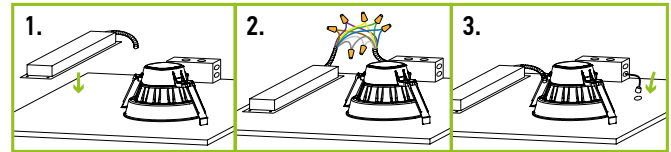
INSTALLATION STEPS:

- Secure the safety latch onto a structural part of the original fixture housing above the ceiling. Connect the wires using wire nuts: Black to Black, White to White, Green to Green.
- Before inserting the fixture into the mounting surface opening, choose power and color temperature with a simple switch. Fold up the two spring mounting tabs and release as the fixture is placed into the mounting surface.
- Ensure that the spring mounting tabs have securely mounted the fixture so that the front trim is flush against the mounting surface.



BATTERY BACK-UP KIT INSTALLATION:

- Secure the battery back-up to the ceiling (brackets not included).
- Connect wires as shown on electrical diagram.
- Connect test switch and affix it in the hole on surface.



For most up-to-date spec sheets please refer to asd-lighting.com

ASD LIGHTING CORP

E-mail: orders@asd-lighting.com | Web site: www.asd-lighting.com

