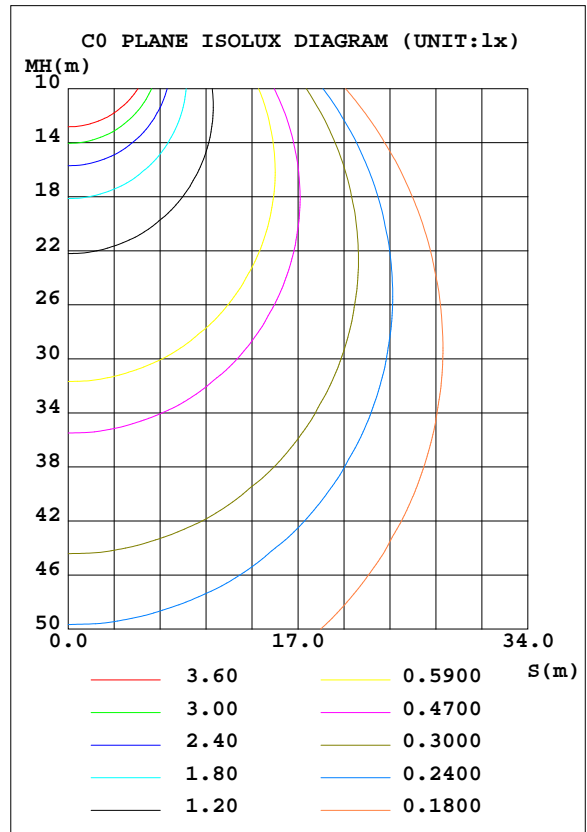
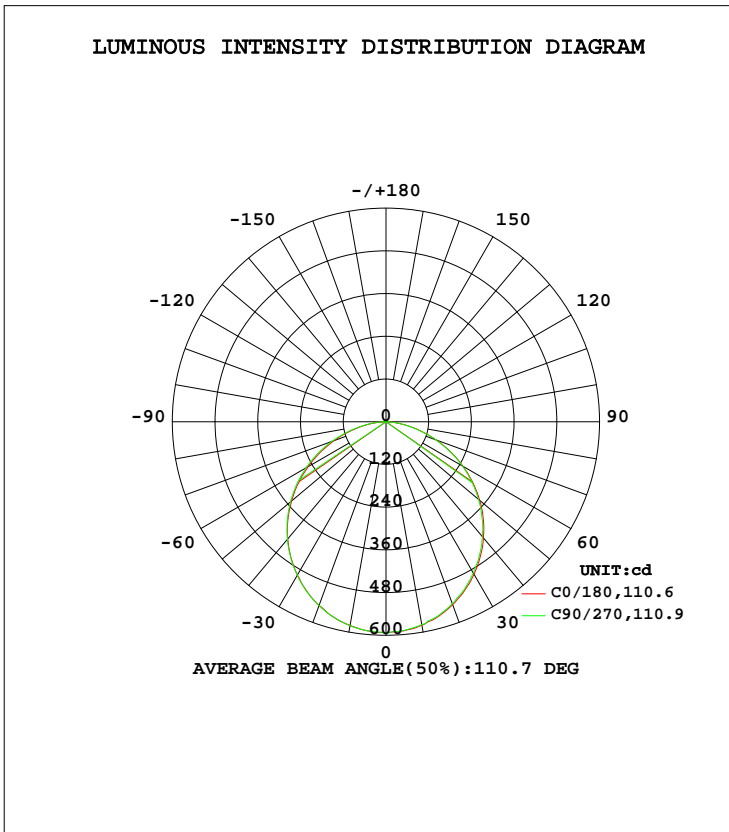


LUMINAIRE PHOTOMETRIC TEST REPORT

Test:U:119.9V I:0.2123A P:23.74W PF:0.9322 Lamp Flux:1656.99x1 lm		
NAME: LED luminaire	TYPE:N/A	WEIGHT:N/A
SPEC.:ASD-MPS-12D24CC-BK 3000K	DIM.: N/A	SERIAL No.:N/A
MFR.:ASD LIGHTING CORP	SUR.:N/A	Shielding Angle:N/A

DATA OF LAMP		PHOTOMETRIC DATA Eff: 69.80 lm/W			
MODEL	PSZ2S230215008-10	I _{max} (cd)	593.0	S/MH(C0/180)	1.24
NOMINAL POWER(W)		LOR(%)	100.0	S/MH(C90/270)	1.24
RATED VOLTAGE(V)	120	TOTAL FLUX(lm)	1657.0	η UP, DN(C0-180)	0.1,50.7
NOMINAL FLUX(lm)	1656.99	CIE CLASS	DIRECT	η UP, DN(C180-360)	0.0,49.2
LAMPS INSIDE	1	η up(%)	0.1	CIBSE SHR NOM	1.25
TEST VOLTAGE(V)	120	η down(%)	99.9	CIBSE SHR MAX	1.35



C Range: 0 - 360DEG
 C Interval: 22.5DEG
 Test Speed: HIGH
 Temperature:24.6DEG
 Operators:Evan
 Test Date:2023-02-22

γ Range: 0 - 180DEG
 γ Interval: 1.0DEG
 Test System:EVERFINE GO-R5000_V2 SYSTEM V2.0.351
 Humidity:51%
 Test Distance:2.532m [K=1.0000]
 Remarks:

ZONAL FLUX DIAGRAM

ZONAL FLUX DIAGRAM:

γ	C0	C45	C90	C135	C180	C225	C270	C315	γ	Φ zone	Φ total	%lum, lamp
10	581.2	581.8	581.7	582.2	580.3	579.5	579.0	579.6	0- 10	55.96	55.96	3.38,3.38
20	549.2	549.5	549.6	550.5	546.8	546.3	544.2	545.5	10- 20	159.9	215.9	13,13
30	497.3	497.8	498.3	498.5	494.8	492.3	490.7	491.9	20- 30	241.3	457.1	27.6,27.6
40	429.4	430.3	430.7	431.4	426.3	423.2	421.5	422.5	30- 40	289.6	746.7	45.1,45.1
50	346.3	349.7	350.3	351.4	343.8	341.6	339.6	340.5	40- 50	299.0	1046	63.1,63.1
60	253.1	257.4	259.7	260.2	249.2	249.1	247.7	246.8	50- 60	268.1	1314	79.3,79.3
70	155.0	159.0	162.3	161.0	150.4	149.8	149.7	148.0	60- 70	201.6	1515	91.5,91.5
80	62.44	65.02	68.18	66.20	57.97	56.52	57.12	55.27	70- 80	112.2	1628	98.2,98.2
90	0.1696	2.599	3.462	2.761	0.0341	0.0350	0.0346	0.0359	80- 90	27.67	1655	99.9,99.9
100	0.1429	0.1499	0.1424	0.1522	0.0612	0.0728	0.0685	0.0709	90-100	0.1503	1655	99.9,99.9
110	0.1696	0.1753	0.1743	0.1739	0.0980	0.1064	0.1063	0.1043	100-110	0.1297	1656	99.9,99.9
120	0.2208	0.2185	0.2239	0.2220	0.1527	0.1522	0.1529	0.1493	110-120	0.1583	1656	99.9,99.9
130	0.3153	0.3161	0.3282	0.3237	0.2146	0.2167	0.2088	0.2097	120-130	0.2005	1656	99.9,99.9
140	0.4826	0.5129	0.5190	0.5089	0.2770	0.2847	0.2770	0.2780	130-140	0.2494	1656	99.9,99.9
150	0.6896	0.7536	0.7717	0.7417	0.3270	0.3414	0.3423	0.3340	140-150	0.2941	1656	100,100
160	0.8846	0.9092	0.9142	0.9127	0.4409	0.4424	0.4323	0.4240	150-160	0.2814	1657	100,100
170	0.8435	0.8548	0.8613	0.8618	0.5435	0.5134	0.4984	0.5140	160-170	0.1948	1657	100,100
180	0.7108	0.6751	0.6584	0.7180	0.7143	0.6988	0.6622	0.6831	170-180	0.0660	1657	100,100
DEG	LUMINOUS INTENSITY:cd									UNIT:lm		

Conical surface Flux(90deg): 897.55 lm

%lum = 54.2%
%lamp = 54.2%

Conical surface Flux(120deg): 1313.8 lm

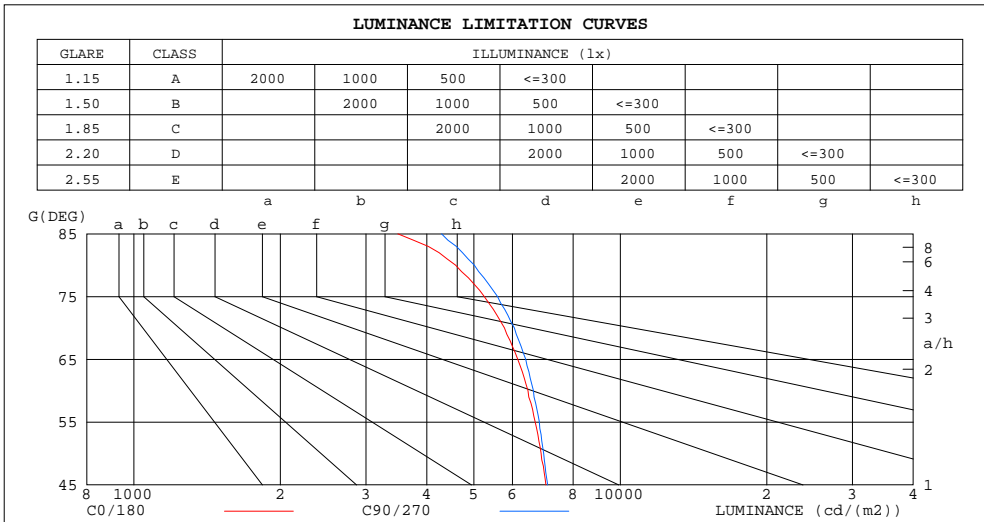
%lum = 79.3%
%lamp = 79.3%

C Range: 0 - 360DEG
C Interval: 22.5DEG
Test Speed: HIGH
Temperature:24.6DEG
Operators:Evan
Test Date:2023-02-22

γ Range: 0 - 180DEG
γ Interval: 1.0DEG
Test System:EVERFINE GO-R5000_V2 SYSTEM V2.0.351
Humidity:51%
Test Distance:2.532m [K=1.0000]
Remarks:

LUMINANCE LIMITATION CURVES

Test:U:119.9V I:0.2123A P:23.74W PF:0.9322 Lamp Flux:1656.99x1 lm		
NAME: LED luminaire	TYPE:N/A	WEIGHT:N/A
SPEC.:ASD-MPS-12D24CC-BK 3000K	DIM.: N/A	SERIAL No.:N/A
MFR.:ASD LIGHTING CORP	SUR.:N/A	Shielding Angle:N/A



LUMINANCE cd/(m2)		
G (DEG)	C0/180	C90/270
85	3489	4290
80	4586	5010
75	5253	5592
70	5780	6055
65	6152	6390
60	6457	6628
55	6681	6816
50	6871	6955
45	7029	7088

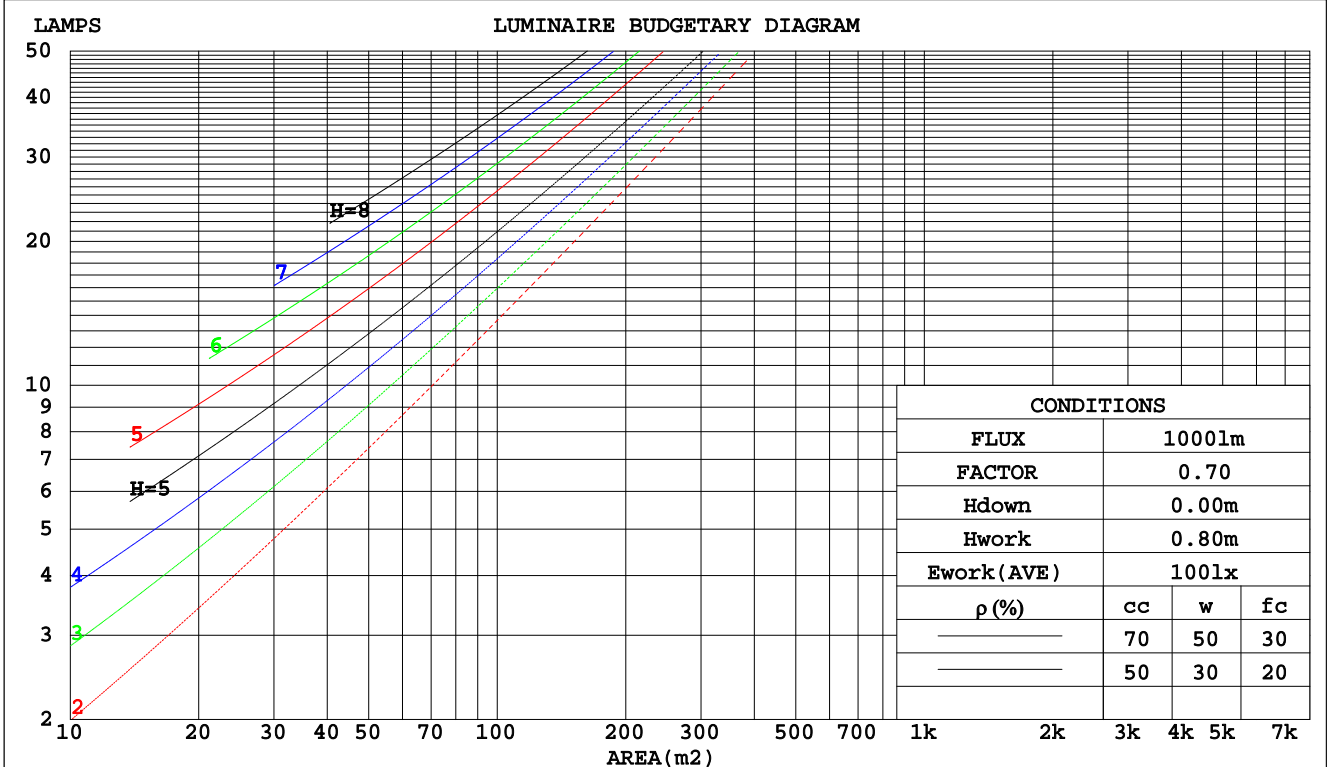
C Range: 0 - 360DEG
 C Interval: 22.5DEG
 Test Speed: HIGH
 Temperature:24.6DEG
 Operators:Evan
 Test Date:2023-02-22

γ Range: 0 - 180DEG
 γ Interval: 1.0DEG
 Test System:EVERFINE GO-R5000_V2 SYSTEM V2.0.351
 Humidity:51%
 Test Distance:2.532m [K=1.0000]
 Remarks:

CU AND LUMINAIRE BUDGETARY ESTIMATE DIAGRAM

Test:U:119.9V I:0.2123A P:23.74W PF:0.9322 Lamp Flux:1656.99x1 lm		
NAME: LED luminaire	TYPE:N/A	WEIGHT:N/A
SPEC.:ASD-MPS-12D24CC-BK 3000K	DIM.: N/A	SERIAL No.:N/A
MFR.:ASD LIGHTING CORP	SUR.:N/A	Shielding Angle:N/A

pcc	80%			70%			50%			30%			10%			0
pw	50%	30%	10%	50%	30%	10%	50%	30%	10%	50%	30%	10%	50%	30%	10%	0
pfc	20%			20%			20%			20%			20%			0
RCR	RCR:Room Cavity Ratio															
	Coefficients of Utilization(CU)															
0.0	1.19	1.19	1.19	1.16	1.16	1.16	1.11	1.11	1.11	1.06	1.06	1.06	1.02	1.02	1.02	.00
1.0	1.04	.00	.96	1.02	.98	.94	.97	.94	.91	.94	.91	.89	.90	.88	.86	.84
2.0	.91	.84	.78	.89	.83	.77	.85	.80	.75	.82	.78	.74	.79	.75	.72	.70
3.0	.80	.71	.65	.78	.70	.64	.75	.69	.63	.72	.67	.62	.70	.65	.61	.59
4.0	.71	.62	.55	.69	.61	.55	.67	.60	.54	.64	.58	.53	.62	.57	.52	.50
5.0	.63	.54	.47	.62	.53	.47	.60	.52	.47	.58	.51	.46	.56	.50	.46	.43
6.0	.57	.48	.41	.56	.47	.41	.54	.46	.41	.52	.46	.40	.51	.45	.40	.38
7.0	.51	.43	.36	.51	.42	.36	.49	.42	.36	.48	.41	.36	.46	.40	.36	.34
8.0	.47	.38	.33	.46	.38	.32	.45	.37	.32	.44	.37	.32	.42	.36	.32	.30
9.0	.43	.35	.29	.42	.35	.29	.41	.34	.29	.40	.34	.29	.39	.33	.29	.27
10.0	.40	.32	.27	.39	.32	.26	.38	.31	.26	.37	.31	.26	.36	.30	.26	.24



C Range: 0 - 360DEG
 C Interval: 22.5DEG
 Test Speed: HIGH
 Temperature:24.6DEG
 Operators:Evan
 Test Date:2023-02-22

γ Range: 0 - 180DEG
 γ Interval: 1.0DEG
 Test System:EVERFINE GO-R5000_V2 SYSTEM V2.0.351
 Humidity:51%
 Test Distance:2.532m [K=1.0000]
 Remarks:

WEC AND CCEC

Test:U:119.9V I:0.2123A P:23.74W PF:0.9322 Lamp Flux:1656.99x1 lm		
NAME: LED luminaire	TYPE:N/A	WEIGHT:N/A
SPEC.:ASD-MPS-12D24CC-BK 3000K	DIM.: N/A	SERIAL No.:N/A
MFR.:ASD LIGHTING CORP	SUR.:N/A	Shielding Angle:N/A

ρcc	80%			70%			50%			30%			10%			0
ρw	50%	30%	10%	50%	30%	10%	50%	30%	10%	50%	30%	10%	50%	30%	10%	0
ρfc	20%			20%			20%			20%			20%			0
RCR	RCR:Room Cavity Ratio						Wall Exitance Coefficients(WEC)									
0.0																
1.0	.306	.174	.055	.299	.170	.054	.285	.164	.052	.273	.158	.051	.262	.152	.049	
2.0	.289	.158	.049	.283	.156	.048	.271	.151	.047	.260	.146	.046	.250	.142	.045	
3.0	.268	.143	.043	.263	.141	.042	.252	.137	.042	.243	.133	.041	.234	.129	.040	
4.0	.248	.129	.038	.243	.127	.038	.234	.124	.037	.225	.121	.036	.217	.118	.036	
5.0	.229	.117	.034	.225	.115	.034	.217	.113	.033	.209	.110	.033	.202	.108	.032	
6.0	.213	.107	.031	.209	.106	.030	.202	.103	.030	.195	.101	.030	.188	.099	.029	
7.0	.198	.098	.028	.195	.097	.028	.188	.095	.027	.182	.093	.027	.176	.092	.027	
8.0	.185	.090	.025	.182	.090	.025	.176	.088	.025	.171	.086	.025	.166	.085	.025	
9.0	.173	.084	.023	.171	.083	.023	.166	.082	.023	.161	.081	.023	.156	.079	.023	
10.0	.163	.078	.022	.161	.078	.022	.156	.076	.022	.152	.075	.021	.147	.074	.021	

ρcc	80%			70%			50%			30%			10%			0
ρw	50%	30%	10%	50%	30%	10%	50%	30%	10%	50%	30%	10%	50%	30%	10%	0
ρfc	20%			20%			20%			20%			20%			0
RCR	RCR:Room Cavity Ratio						Ceiling Cavity Exitance Coefficients(CCEC)									
0.0	.191	.191	.191	.163	.163	.163	.112	.112	.112	.064	.064	.064	.020	.020	.020	
1.0	.181	.157	.135	.155	.135	.117	.106	.093	.081	.061	.054	.047	.020	.017	.015	
2.0	.173	.133	.099	.148	.114	.086	.101	.079	.060	.058	.046	.035	.019	.015	.011	
3.0	.165	.115	.075	.141	.099	.065	.097	.069	.046	.056	.040	.027	.018	.013	.009	
4.0	.157	.102	.059	.135	.088	.052	.093	.061	.036	.054	.036	.021	.017	.012	.007	
5.0	.150	.091	.048	.129	.079	.042	.089	.055	.030	.051	.032	.018	.017	.011	.006	
6.0	.143	.083	.040	.123	.072	.035	.085	.050	.025	.049	.030	.015	.016	.010	.005	
7.0	.136	.076	.034	.117	.066	.030	.081	.046	.021	.047	.027	.013	.015	.009	.004	
8.0	.130	.070	.030	.111	.061	.026	.077	.043	.018	.045	.025	.011	.015	.008	.004	
9.0	.123	.065	.026	.106	.057	.023	.074	.040	.016	.043	.024	.010	.014	.008	.003	
10.0	.118	.061	.023	.102	.053	.020	.070	.037	.014	.041	.022	.009	.013	.007	.003	

C Range: 0 - 360DEG
 C Interval: 22.5DEG
 Test Speed: HIGH
 Temperature:24.6DEG
 Operators:Evan
 Test Date:2023-02-22

γ Range: 0 - 180DEG
 γ Interval: 1.0DEG
 Test System:EVERFINE GO-R5000_V2 SYSTEM V2.0.351
 Humidity:51%
 Test Distance:2.532m [K=1.0000]
 Remarks:

UGR(Unified Glare Rating) Table

Test:U:119.9V I:0.2123A P:23.74W PF:0.9322 Lamp Flux:1656.99x1 lm										
NAME: LED luminaire					TYPE:N/A			WEIGHT:N/A		
SPEC.:ASD-MPS-12D24CC-BK 3000K					DIM.: N/A			SERIAL No.:N/A		
MFR.:ASD LIGHTING CORP					SUR.:N/A			Shielding Angle:N/A		
ceiling/cavity	0.7	0.7	0.5	0.5	0.3	0.7	0.7	0.5	0.5	0.3
walls	0.5	0.3	0.5	0.3	0.3	0.5	0.3	0.5	0.3	0.3
working plane	0.2	0.2	0.2	0.2	0.2	0.2	0.2	0.2	0.2	0.2
Room dimensions	Viewed crosswise					Viewed endwise				
x = 2H y = 2H	19.5	21.0	19.8	21.2	21.4	19.6	21.1	19.9	21.3	21.5
3H	21.0	22.4	21.3	22.6	22.8	21.1	22.5	21.4	22.8	23.0
4H	21.5	22.9	21.8	23.1	23.4	21.7	23.1	22.0	23.3	23.6
6H	21.9	23.2	22.3	23.4	23.7	22.2	23.4	22.5	23.7	24.0
8H	22.0	23.2	22.4	23.5	23.8	22.3	23.5	22.6	23.8	24.1
12H	22.1	23.2	22.4	23.5	23.8	22.4	23.5	22.7	23.8	24.1
4H 2H	20.1	21.5	20.4	21.7	22.0	20.2	21.5	20.5	21.8	22.0
3H	21.8	22.9	22.1	23.2	23.5	21.9	23.1	22.3	23.4	23.7
4H	22.5	23.5	22.8	23.8	24.2	22.6	23.7	23.0	24.0	24.4
6H	23.0	23.9	23.4	24.3	24.6	23.2	24.1	23.6	24.5	24.8
8H	23.1	24.0	23.5	24.4	24.8	23.4	24.2	23.8	24.6	25.0
12H	23.2	24.0	23.6	24.4	24.8	23.5	24.3	23.9	24.7	25.1
8H 4H	22.7	23.6	23.1	24.0	24.4	22.9	23.8	23.3	24.1	24.5
6H	23.4	24.1	23.8	24.5	24.9	23.6	24.3	24.0	24.7	25.1
8H	23.6	24.3	24.1	24.7	25.1	23.8	24.5	24.3	24.9	25.4
12H	23.8	24.3	24.2	24.8	25.2	24.0	24.6	24.5	25.0	25.5
12H 4H	22.7	23.5	23.2	23.9	24.3	22.9	23.7	23.3	24.1	24.5
6H	23.4	24.1	23.9	24.5	25.0	23.6	24.3	24.1	24.7	25.1
8H	23.7	24.3	24.2	24.7	25.2	23.9	24.5	24.4	24.9	25.4
Variations with the observer position at spacings:										
S = 1.0H	+ 0.2 / - 0.2					+ 0.2 / - 0.2				
1.5H	+ 0.2 / - 0.3					+ 0.2 / - 0.3				
2.0H	+ 0.2 / - 0.3					+ 0.2 / - 0.3				

CIE Pub.117 Corrected 1657 lm Total Lamp Luminous Flux.(8log(F/F0) = 1.8)

C Range: 0 - 360DEG
 C Interval: 22.5DEG
 Test Speed: HIGH
 Temperature:24.6DEG
 Operators:Evan
 Test Date:2023-02-22

γ Range: 0 - 180DEG
 γ Interval: 1.0DEG
 Test System:EVERFINE GO-R5000_V2 SYSTEM V2.0.351
 Humidity:51%
 Test Distance:2.532m [K=1.0000]
 Remarks:

UTILIZATION FACTORS TABLE

Test:U:119.9V I:0.2123A P:23.74W PF:0.9322 Lamp Flux:1656.99x1 lm		
NAME: LED luminaire	TYPE:N/A	WEIGHT:N/A
SPEC.:ASD-MPS-12D24CC-BK 3000K	DIM.: N/A	SERIAL No.:N/A
MFR.: ASD LIGHTING CORP	SUR.:N/A	Shielding Angle:N/A

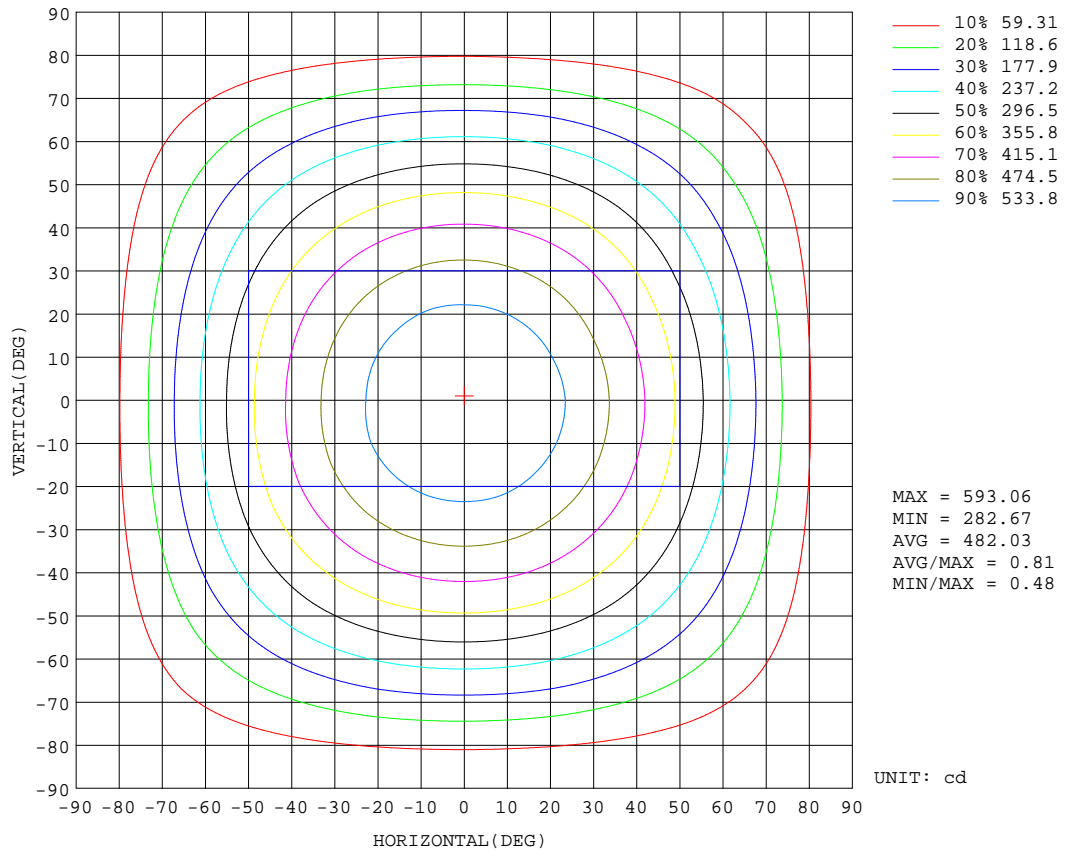
REFLECTANCE										
Ceiling	0.8	0.8	0.8	0.7	0.7	0.7	0.5	0.5	0.5	0
Walls	0.7	0.5	0.3	0.7	0.5	0.3	0.7	0.5	0.3	0
Working plane	0.2	0.2	0.2	0.2	0.2	0.2	0.2	0.2	0.2	0
ROOM INDEX	UTILIZATION FACTORS(PERCENT) $k(RI) \times RCR = 5$									
k = 0.60	58	46	39	57	46	39	56	45	39	33
0.80	68	56	49	67	56	49	65	55	48	41
1.00	76	65	58	75	65	58	73	66	57	50
1.25	83	73	66	82	72	65	79	71	65	57
1.50	88	79	72	87	78	71	84	76	70	62
2.00	95	87	80	93	85	80	90	83	78	70
2.50	99	91	85	97	90	84	93	87	83	74
3.00	102	96	90	100	94	89	96	91	87	78
4.00	106	101	96	104	99	95	100	96	92	83
5.00	109	104	100	106	102	98	102	98	95	86
ROOM INDEX	UF(total)									Direct
According to DIN EN 13032-2 2004			Suspended				SHRNOM = 1.25			

C Range: 0 - 360DEG
 C Interval: 22.5DEG
 Test Speed: HIGH
 Temperature:24.6DEG
 Operators:Evan
 Test Date:2023-02-22

γ Range: 0 - 180DEG
 γ Interval: 1.0DEG
 Test System:EVERFINE GO-R5000_V2 SYSTEM V2.0.351
 Humidity:51%
 Test Distance:2.532m [K=1.0000]
 Remarks:

ISOCANDELA DIAGRAM

Test:U:119.9V I:0.2123A P:23.74W PF:0.9322 Lamp Flux:1656.99x1 lm		
NAME: LED luminaire	TYPE:N/A	WEIGHT:N/A
SPEC.:ASD-MPS-12D24CC-BK 3000K	DIM.: N/A	SERIAL No.:N/A
MFR.:ASD LIGHTING CORP	SUR.:N/A	Shielding Angle:N/A

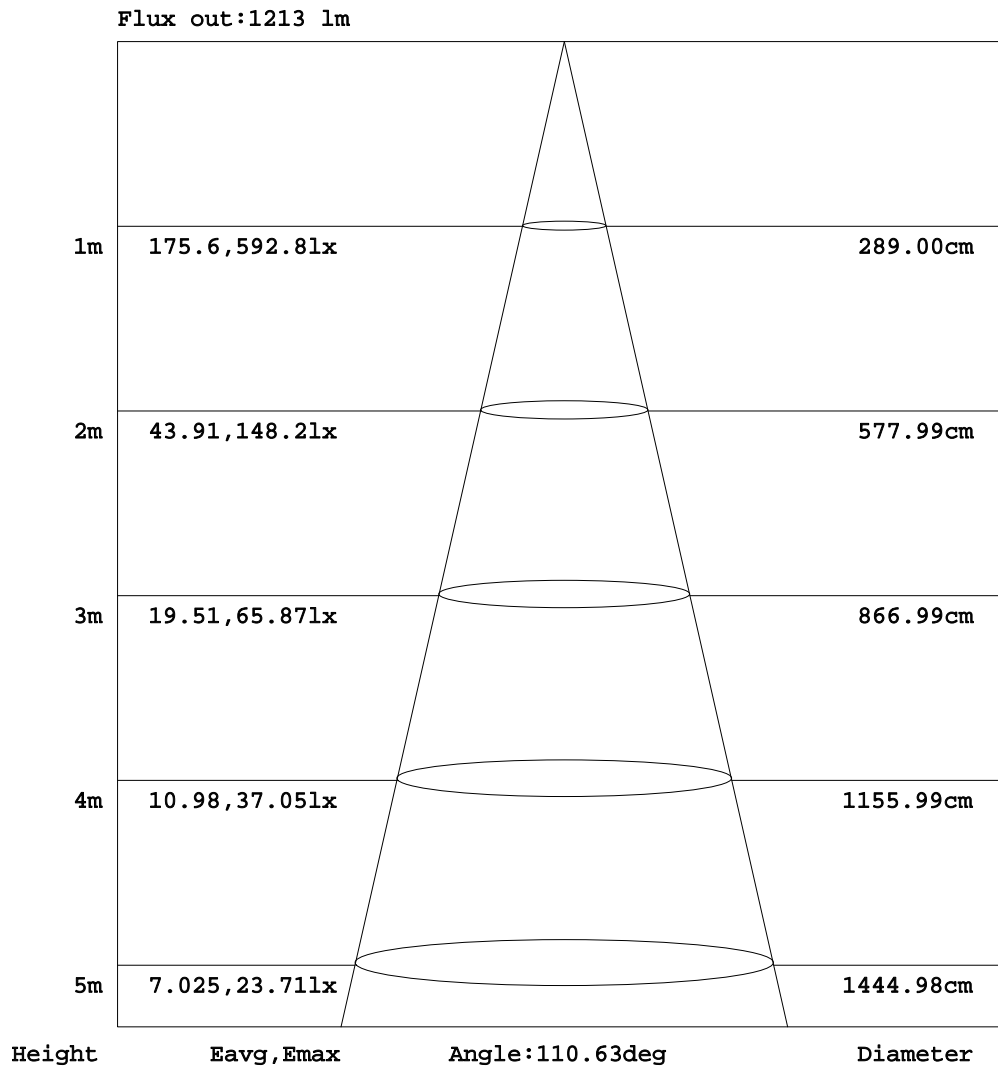


C Range: 0 - 360DEG
 C Interval: 22.5DEG
 Test Speed: HIGH
 Temperature:24.6DEG
 Operators:Evan
 Test Date:2023-02-22

γ Range: 0 - 180DEG
 γ Interval: 1.0DEG
 Test System:EVERFINE GO-R5000_V2 SYSTEM V2.0.351
 Humidity:51%
 Test Distance:2.532m [K=1.0000]
 Remarks:

AAI Figure

Test:U:119.9V I:0.2123A P:23.74W PF:0.9322 Lamp Flux:1656.99x1 lm		
NAME: LED luminaire	TYPE:N/A	WEIGHT:N/A
SPEC.:ASD-MPS-12D24CC-BK 3000K	DIM.: N/A	SERIAL No.:N/A
MFR.: ASD LIGHTING CORP	SUR.:N/A	Shielding Angle:N/A



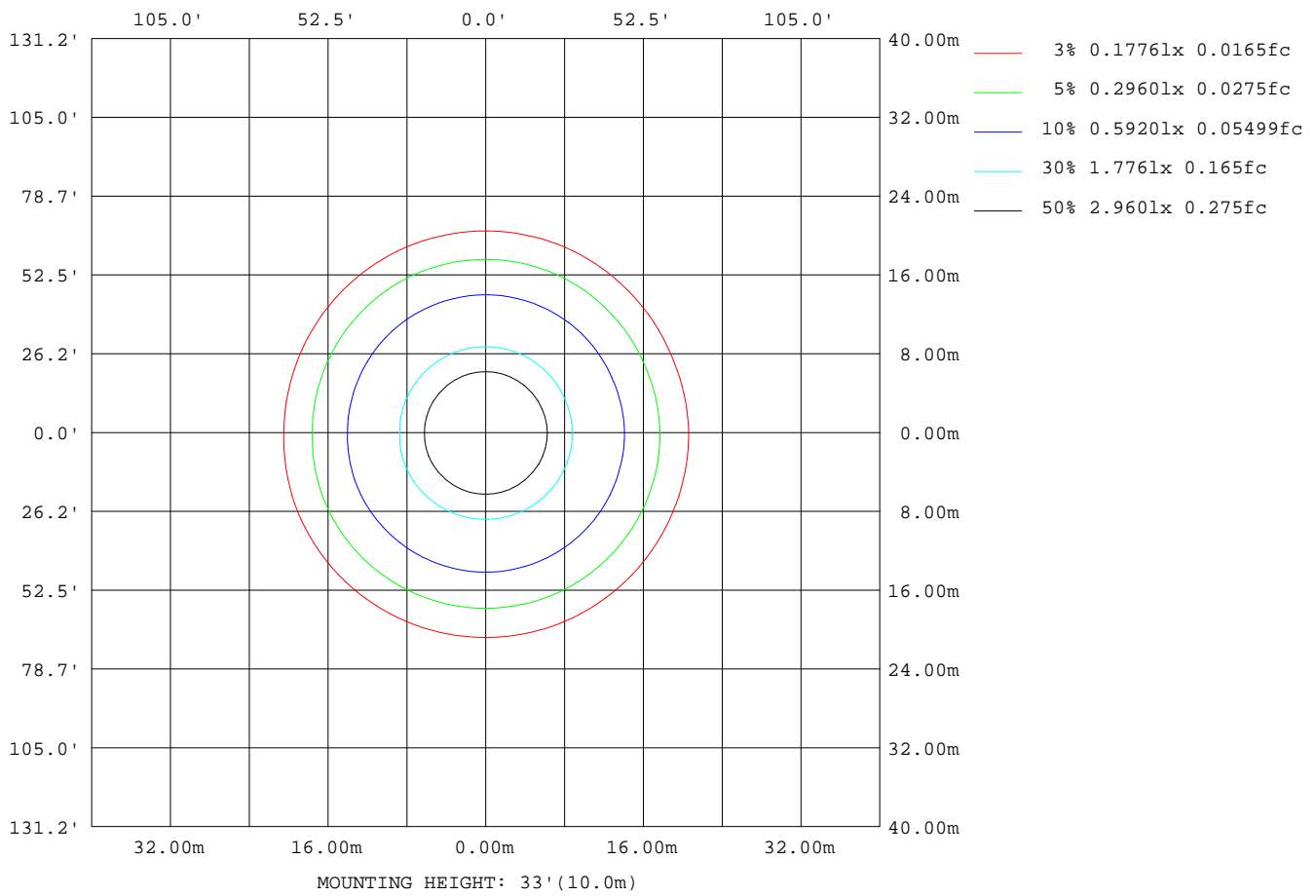
Note:The Curves indicate the illuminated area and the average illumination when the luminaire is at different distance.

C Range: 0 - 360DEG
 C Interval: 22.5DEG
 Test Speed: HIGH
 Temperature:24.6DEG
 Operators:Evan
 Test Date:2023-02-22

γ Range: 0 - 180DEG
 γ Interval: 1.0DEG
 Test System:EVERFINE GO-R5000_V2 SYSTEM V2.0.351
 Humidity:51%
 Test Distance:2.532m [K=1.0000]
 Remarks:

ISOLUX DIAGRAM

Test:U:119.9V I:0.2123A P:23.74W PF:0.9322 Lamp Flux:1656.99x1 lm		
NAME: LED luminaire	TYPE:N/A	WEIGHT:N/A
SPEC.:ASD-MPS-12D24CC-BK 3000K	DIM.: N/A	SERIAL No.:N/A
MFR.:ASD LIGHTING CORP	SUR.:N/A	Shielding Angle:N/A



C Range: 0 - 360DEG
 C Interval: 22.5DEG
 Test Speed: HIGH
 Temperature:24.6DEG
 Operators:Evan
 Test Date:2023-02-22

γ Range: 0 - 180DEG
 γ Interval: 1.0DEG
 Test System:EVERFINE GO-R5000_V2 SYSTEM V2.0.351
 Humidity:51%
 Test Distance:2.532m [K=1.0000]
 Remarks:

LED Avg.L Report

Test:U:119.9V I:0.2123A P:23.74W PF:0.9322 Lamp Flux:1656.99x1 lm		
NAME: LED luminaire	TYPE:N/A	WEIGHT:N/A
SPEC.:ASD-MPS-12D24CC-BK 3000K	DIM.: N/A	SERIAL No.:N/A
MFR.:ASD LIGHTING CORP	SUR.:N/A	Shielding Angle:N/A

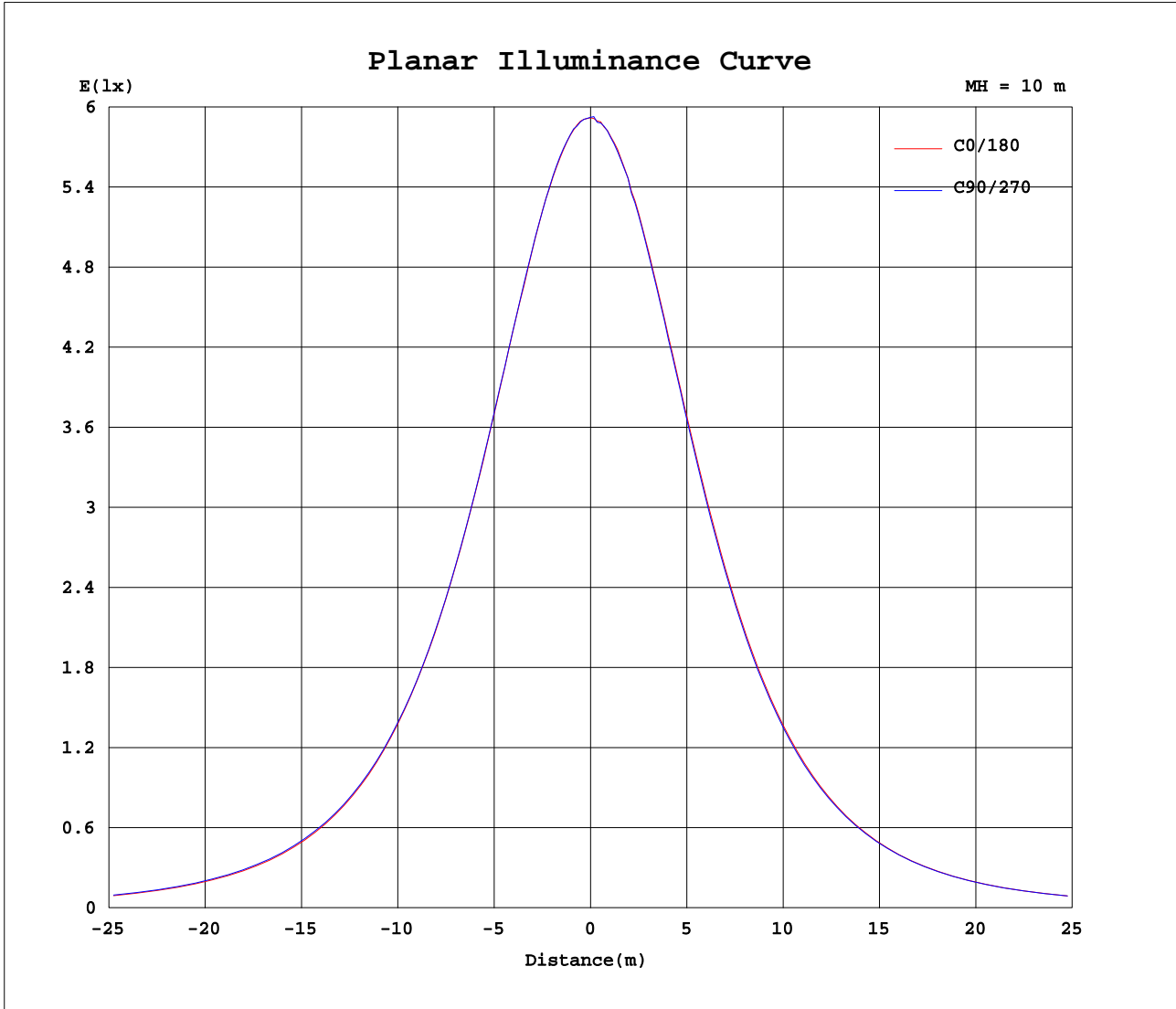
AvgL	cd/m2
L_0~180(65)av	6092
L_0~180(75)av	5135
L_0~180(85)av	3253
L_90~270(65)av	6192
L_90~270(75)av	5272
L_90~270(85)av	3658
L_45(65)av	6154
L_45(75)av	5197
L_45(85)av	3355

Standard: GB/T 29293-2012

C Range: 0 - 360DEG
 C Interval: 22.5DEG
 Test Speed: HIGH
 Temperature:24.6DEG
 Operators:Evan
 Test Date:2023-02-22

γ Range: 0 - 180DEG
 γ Interval: 1.0DEG
 Test System:EVERFINE GO-R5000_V2 SYSTEM V2.0.351
 Humidity:51%
 Test Distance:2.532m [K=1.0000]
 Remarks:

Planar Illuminance Curve



C Range: 0 - 360DEG
 C Interval: 22.5DEG
 Test Speed: HIGH
 Temperature: 24.6DEG
 Operators: Evan
 Test Date: 2023-02-22

γ Range: 0 - 180DEG
 γ Interval: 1.0DEG
 Test System: EVERFINE GO-R5000_V2 SYSTEM V2.0.351
 Humidity: 51%
 Test Distance: 2.532m [K=1.0000]
 Remarks:

LUMINOUS DISTRIBUTION INTENSITY DATA

Test:U:119.9V I:0.2123A P:23.74W PF:0.9322 Lamp Flux:1656.99x1 lm		
NAME: LED luminaire	TYPE:N/A	WEIGHT:N/A
SPEC.:ASD-MPS-12D24CC-BK 3000K	DIM.: N/A	SERIAL No.:N/A
MFR.: ASD LIGHTING CORP	SUR.:N/A	Shielding Angle:N/A

Table--1

UNIT: cd

C(DEG) γ (DEG)	0	22.5	45	67.5	90	112.5	135	157.5	180	202.5	225	247.5	270	292.5	315	337.5			
0	592	592	592	592	592	592	592	592	592	592	592	592	592	592	592	592			
5	590	589	590	590	590	590	590	589	589	588	588	589	588	589	589	589			
10	581	582	582	583	582	582	582	582	580	580	580	580	579	579	580	579			
15	568	568	568	569	569	569	569	568	567	565	566	566	565	565	564	565			
20	549	550	550	550	550	551	551	550	547	547	546	545	544	545	546	545			
25	526	525	526	526	527	527	527	527	523	522	522	521	520	520	521	521			
30	497	498	498	499	498	499	499	499	495	494	492	492	491	491	492	492			
35	466	466	466	466	467	467	467	467	462	460	460	459	458	458	459	460			
40	429	431	430	431	431	432	431	432	426	425	423	422	421	422	423	422			
45	390	390	392	392	393	392	393	393	387	385	384	383	382	382	383	383			
50	346	348	350	351	350	352	351	351	344	343	342	341	340	340	340	339			
55	300	302	305	306	306	307	307	305	298	297	297	296	295	295	295	294			
60	253	255	257	260	260	260	260	258	249	248	249	249	248	248	247	245			
65	204	206	208	212	212	212	211	208	200	199	200	200	199	199	197	197			
70	155	156	159	162	162	163	161	159	150	149	150	151	150	150	148	147			
75	107	108	110	113	113	114	112	110	102	101	101	102	101	100	99.1	99.0			
80	62.4	63.5	65.0	66.9	68.2	67.6	66.2	65.0	58.0	57.0	56.5	57.1	57.1	56.2	55.3	55.5			
85	23.8	24.8	25.9	27.8	29.3	28.3	26.6	25.8	20.6	20.3	20.0	20.4	20.7	19.9	19.1	19.2			
90	0.17	0.20	2.60	3.10	3.46	3.20	2.76	0.47	0.03	0.03	0.04	0.04	0.03	0.04	0.04	0.03			
95	0.12	0.12	0.12	0.12	0.12	0.12	0.12	0.12	0.05	0.05	0.05	0.05	0.05	0.05	0.05	0.05			
100	0.14	0.15	0.15	0.15	0.14	0.15	0.15	0.14	0.06	0.07	0.07	0.07	0.07	0.07	0.07	0.07			
105	0.16	0.16	0.16	0.16	0.16	0.16	0.16	0.16	0.08	0.08	0.09	0.09	0.09	0.09	0.09	0.08			
110	0.17	0.17	0.18	0.18	0.17	0.18	0.17	0.17	0.10	0.10	0.11	0.11	0.11	0.11	0.10	0.10			
115	0.19	0.18	0.19	0.19	0.19	0.19	0.19	0.19	0.12	0.12	0.13	0.13	0.13	0.13	0.12	0.12			
120	0.22	0.22	0.22	0.22	0.22	0.22	0.22	0.22	0.15	0.15	0.15	0.15	0.15	0.15	0.15	0.15			
125	0.26	0.26	0.26	0.26	0.27	0.27	0.27	0.26	0.19	0.18	0.19	0.18	0.18	0.18	0.18	0.18			
130	0.32	0.32	0.32	0.32	0.33	0.33	0.32	0.32	0.21	0.21	0.22	0.22	0.21	0.22	0.21	0.22			
135	0.38	0.38	0.40	0.40	0.41	0.41	0.40	0.38	0.25	0.25	0.25	0.25	0.24	0.24	0.24	0.25			
140	0.48	0.49	0.51	0.51	0.52	0.52	0.51	0.48	0.28	0.27	0.28	0.28	0.28	0.27	0.28	0.28			
145	0.60	0.62	0.65	0.66	0.67	0.66	0.63	0.60	0.30	0.30	0.31	0.33	0.32	0.32	0.30	0.32			
150	0.69	0.73	0.75	0.77	0.77	0.78	0.74	0.71	0.33	0.33	0.34	0.34	0.34	0.34	0.33	0.35			
155	0.80	0.83	0.85	0.86	0.87	0.87	0.84	0.82	0.38	0.36	0.40	0.39	0.38	0.39	0.38	0.41			
160	0.88	0.90	0.91	0.93	0.91	0.93	0.91	0.89	0.44	0.43	0.44	0.43	0.43	0.43	0.42	0.46			
165	0.89	0.90	0.91	0.92	0.93	0.93	0.92	0.88	0.48	0.48	0.46	0.48	0.46	0.47	0.47	0.50			
170	0.84	0.85	0.85	0.85	0.86	0.86	0.86	0.85	0.54	0.54	0.51	0.51	0.50	0.50	0.51	0.54			
175	0.82	0.81	0.80	0.78	0.77	0.79	0.81	0.82	0.63	0.63	0.61	0.58	0.57	0.56	0.59	0.63			
180	0.71	0.70	0.68	0.66	0.66	0.68	0.72	0.74	0.71	0.71	0.70	0.68	0.66	0.66	0.68	0.72			

C Range: 0 - 360DEG
 C Interval: 22.5DEG
 Test Speed: HIGH
 Temperature:24.6DEG
 Operators:Evan
 Test Date:2023-02-22

γ Range: 0 - 180DEG
 γ Interval: 1.0DEG
 Test System:EVERFINE GO-R5000_V2 SYSTEM V2.0.351
 Humidity:51%
 Test Distance:2.532m [K=1.0000]
 Remarks: