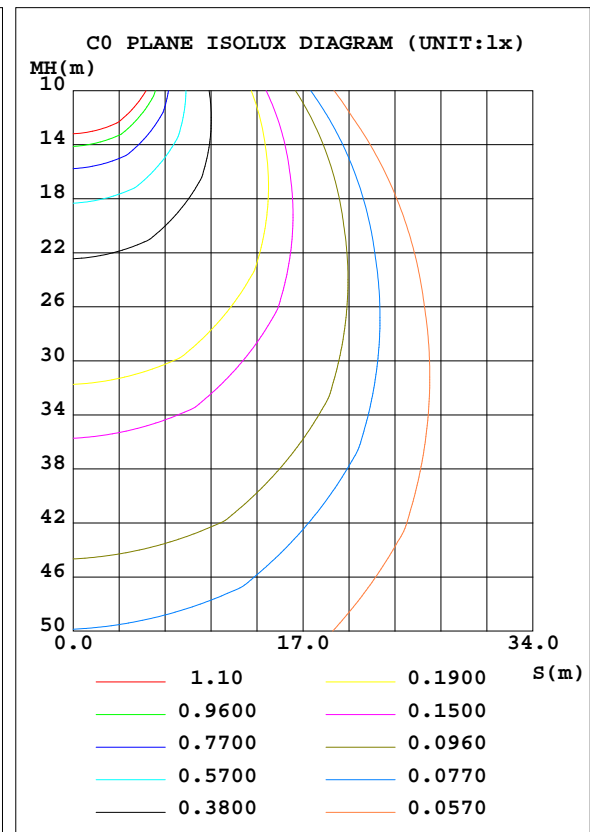
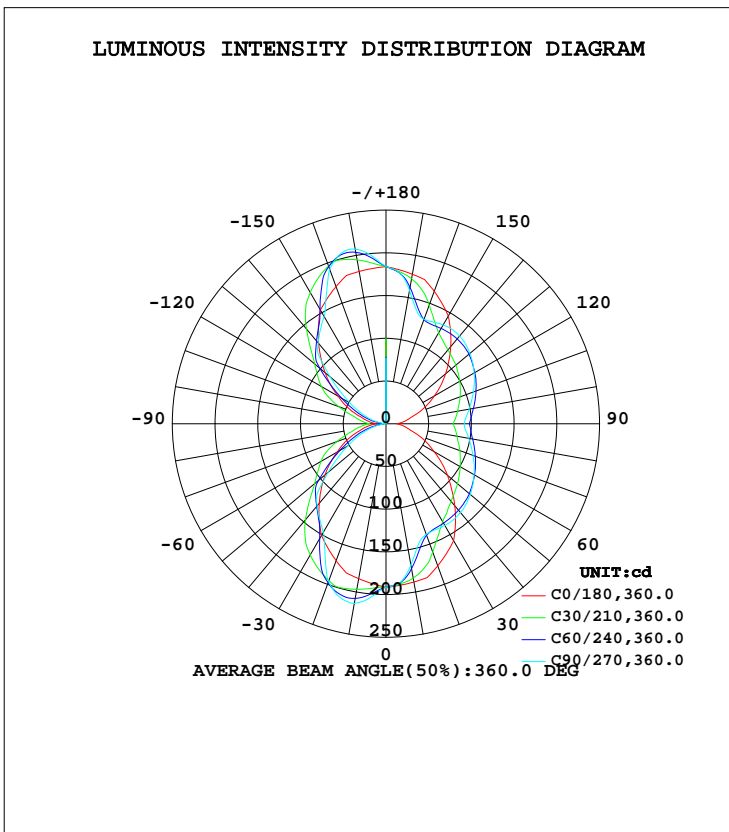


LUMINAIRE PHOTOMETRIC TEST REPORT

Test:U:120.00V I:0.1151A P:13.600W PF:0.9850 Freq:60.00Hz Lamp Flux:1204.07x1 lm		
NAME: ASD-LVF26M-3D15BK/CH_5000K	TYPE:LED	WEIGHT:
SPEC.:N/A	DIM.:	SERIAL No.:
MFR.: ASD Lighting Corp	SUR.:	Shielding Angle:

DATA OF LAMP		PHOTOMETRIC DATA Eff: 88.53 lm/W			
MODEL	ASD-LVF26M-3D15BK/CH	I _{max} (cd)	213.9	S/MH(C0/180)	1.18
NOMINAL POWER(W)	15	LOR(%)	100.0	S/MH(C90/270)	1.15
RATED VOLTAGE(V)	120	TOTAL FLUX(lm)	1204.1	η UP, DN(C0-180)	28.1,28.6
NOMINAL FLUX(lm)	1204.07	CIE CLASS	DIFFUSE	η UP, DN(C180-360)	21.5,21.8
LAMPS INSIDE	1	η up(%)	49.6	CIBSE SHR NOM	1.25
TEST VOLTAGE(V)	120	η down(%)	50.4	CIBSE SHR MAX	1.30



C Range: 0 - 360DEG
 C Interval: 15.0DEG
 Test Speed: HIGH
 Temperature: 25.0DEG
 Operators: Alan Wang
 Test Date: 10 August 2023

γ Range: 0 - 180DEG
 γ Interval: 1.0DEG
 Test System: EVERFINE GO-R5000_V2 SYSTEM V2.00.416
 Humidity: 43.6%
 Test Distance: 2.500m [K=1.0391]
 Remarks:

ZONAL FLUX DIAGRAM

ZONAL FLUX DIAGRAM:

γ	C0	C45	C90	C135	C180	C225	C270	C315	γ	Φ zone	Φ total	%lum,lamp
10	188.1	178.0	167.8	175.9	184.2	203.1	213.6	205.9	0- 10	18.26	18.26	1.52,1.52
20	177.0	146.3	137.8	144.3	170.7	201.3	196.5	204.8	10- 20	51.35	69.61	5.78,5.78
30	158.2	130.6	137.6	129.4	151.0	170.2	146.8	170.9	20- 30	74.32	143.9	12,12
40	125.3	126.4	135.7	126.1	121.7	129.5	125.4	131.3	30- 40	87.53	231.5	19.2,19.2
50	94.06	120.6	128.8	120.9	93.24	107.9	88.64	108.6	40- 50	92.90	324.4	26.9,26.9
60	64.57	113.7	119.1	114.5	65.70	77.66	51.44	76.54	50- 60	88.15	412.5	34.3,34.3
70	41.24	106.0	108.4	107.1	43.32	45.74	26.23	43.76	60- 70	77.39	489.9	40.7,40.7
80	23.84	98.51	98.41	99.50	24.77	23.16	6.840	20.53	70- 80	64.32	554.2	46,46
90	12.37	93.21	91.76	93.40	10.06	10.06	0.1303	9.498	80- 90	52.65	606.9	50.4,50.4
100	24.83	99.41	98.78	99.23	23.23	21.23	7.134	21.06	90-100	52.67	659.5	54.8,54.8
110	42.48	106.8	108.8	107.1	41.48	43.26	25.04	42.82	100-110	64.07	723.6	60.1,60.1
120	65.31	113.6	119.1	114.6	64.80	75.63	48.65	74.69	110-120	76.75	800.4	66.5,66.5
130	91.14	119.2	128.2	120.7	93.14	108.2	85.33	107.2	120-130	87.18	887.5	73.7,73.7
140	118.0	122.8	134.2	124.9	122.7	130.4	123.7	128.6	130-140	91.62	979.2	81.3,81.3
150	145.8	123.6	133.6	126.1	153.6	167.8	145.2	166.2	140-150	85.73	1065	88.4,88.4
160	165.1	135.9	130.3	139.1	171.0	200.4	192.7	197.5	150-160	72.06	1137	94.4,94.4
170	177.8	167.5	158.7	169.7	181.1	200.2	207.6	197.9	160-170	49.55	1186	98.5,98.5
180	183.9	183.9	183.9	183.9	183.9	183.9	183.9	183.9	170-180	17.58	1204	100,100
DEG	LUMINOUS INTENSITY:cd									UNIT:lm		

Conical surface Flux(90deg): 277.84 lm

%lum = 23.1%

%lamp = 23.1%

Conical surface Flux(120deg): 412.51 lm

%lum = 34.3%

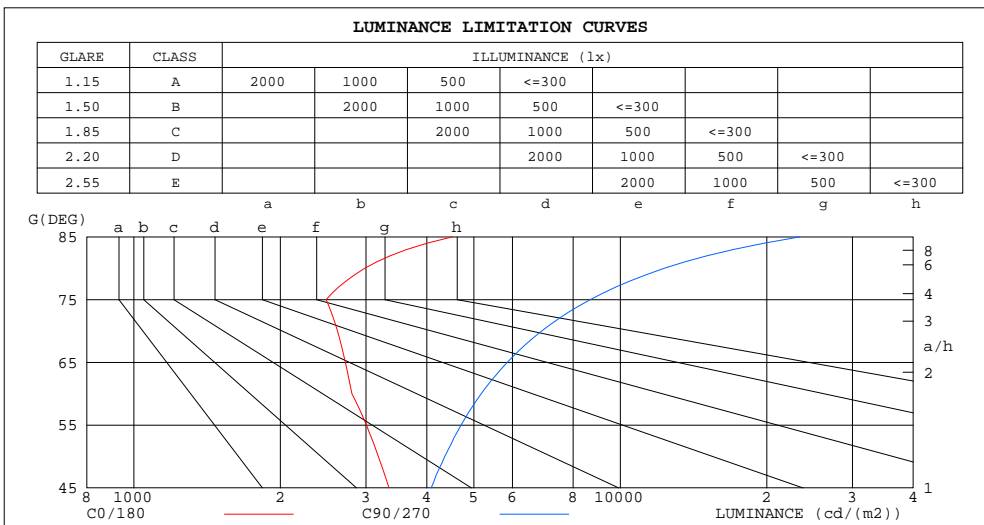
%lamp = 34.3%

C Range: 0 - 360DEG
 C Interval: 15.0DEG
 Test Speed: HIGH
 Temperature: 25.0DEG
 Operators: Alan Wang
 Test Date: 10 August 2023

γ Range: 0 - 180DEG
 γ Interval: 1.0DEG
 Test System: EVERFINE GO-R5000_V2 SYSTEM V2.00.416
 Humidity: 43.6%
 Test Distance: 2.500m [K=1.0391]
 Remarks:

LUMINANCE LIMITATION CURVES

Test:U:120.00V I:0.1151A P:13.600W PF:0.9850 Freq:60.00Hz Lamp Flux:1204.07x1 lm		
NAME: ASD-LVF26M-3D15BK/CH_5000K	TYPE:LED	WEIGHT:
SPEC.:N/A	DIM.:	SERIAL No.:
MFR.: ASD Lighting Corp	SUR.:	Shielding Angle:



LUMINANCE cd/(m2)		
G(DEG)	C0/180	C90/270
85	4515	23419
80	2984	12321
75	2484	8676
70	2621	6893
65	2721	5857
60	2807	5176
55	3006	4706
50	3181	4357
45	3345	4085

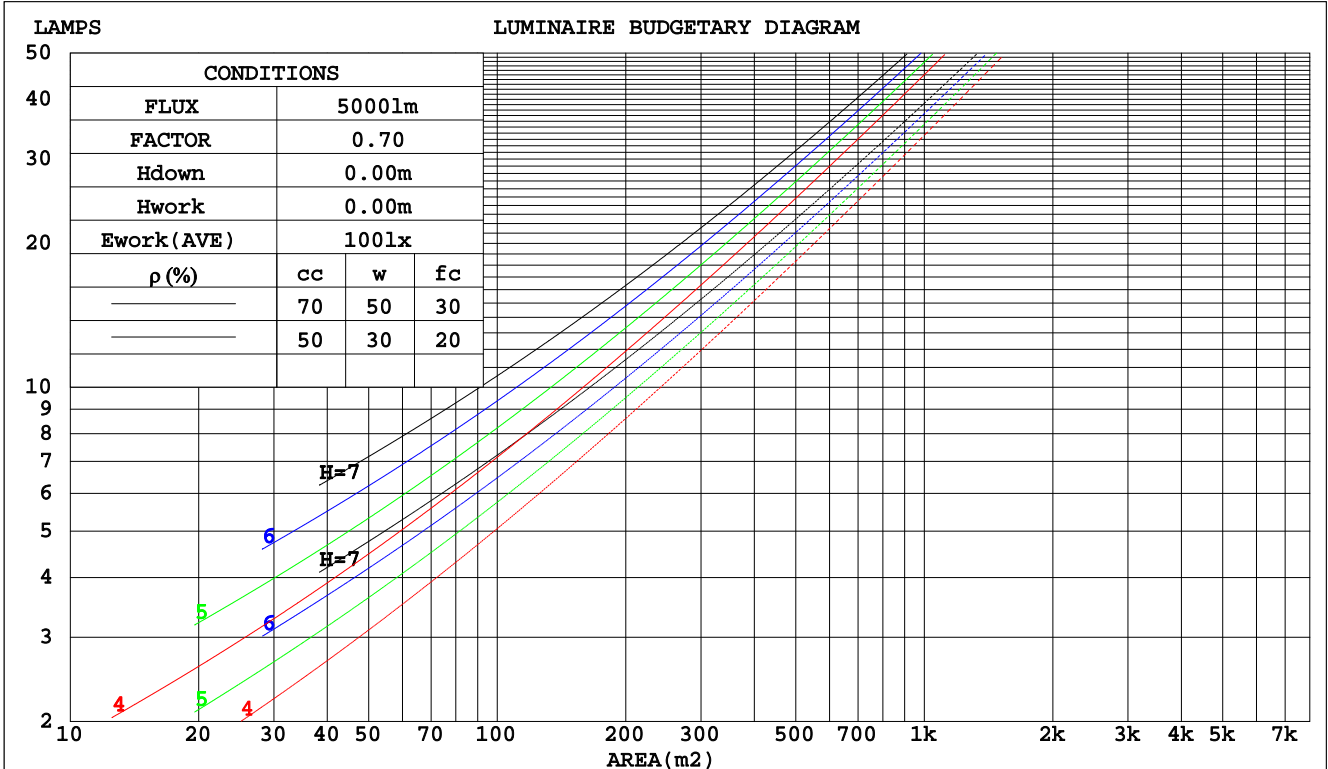
C Range: 0 - 360DEG
 C Interval: 15.0DEG
 Test Speed: HIGH
 Temperature: 25.0DEG
 Operators: Alan Wang
 Test Date: 10 August 2023

γ Range: 0 - 180DEG
 γ Interval: 1.0DEG
 Test System: EVERFINE GO-R5000_V2 SYSTEM V2.00.416
 Humidity: 43.6%
 Test Distance: 2.500m [K=1.0391]
 Remarks:

CU AND LUMINAIRE BUDGETARY ESTIMATE DIAGRAM

Test:U:120.00V I:0.1151A P:13.600W PF:0.9850 Freq:60.00Hz Lamp Flux:1204.07x1 lm		
NAME: ASD-LVF26M-3D15BK/CH_5000K	TYPE:LED	WEIGHT:
SPEC.:N/A	DIM.:	SERIAL No.:
MFR.: ASD Lighting Corp	SUR.:	Shielding Angle:

pcc	80%			70%			50%			30%			10%			0
	50%	30%	10%	50%	30%	10%	50%	30%	10%	50%	30%	10%	50%	30%	10%	0
pw																
pfc	20%			20%			20%			20%			20%			0
RCR	RCR:Room Cavity Ratio						Coefficients of Utilization(CU)									
0.0	1.07	1.07	1.07	.99	.99	.99	.84	.84	.84	.69	.69	.69	.56	.56	.56	.50
1.0	.91	.86	.82	.84	.80	.76	.71	.68	.65	.58	.56	.54	.47	.46	.44	.39
2.0	.79	.72	.66	.73	.67	.61	.61	.56	.53	.50	.47	.44	.41	.38	.36	.31
3.0	.69	.61	.54	.63	.56	.51	.53	.48	.44	.44	.40	.37	.36	.33	.30	.26
4.0	.61	.52	.46	.56	.48	.43	.47	.41	.37	.39	.35	.31	.32	.28	.26	.22
5.0	.54	.45	.39	.50	.42	.36	.42	.36	.32	.35	.30	.27	.28	.25	.22	.19
6.0	.48	.40	.34	.45	.37	.32	.38	.32	.27	.32	.27	.23	.26	.22	.19	.16
7.0	.43	.35	.29	.40	.33	.28	.34	.28	.24	.29	.24	.21	.23	.20	.17	.14
8.0	.39	.31	.26	.37	.29	.24	.31	.25	.21	.26	.22	.18	.22	.18	.15	.13
9.0	.36	.28	.23	.33	.26	.22	.29	.23	.19	.24	.20	.16	.20	.16	.14	.12
10.0	.33	.26	.21	.31	.24	.19	.26	.21	.17	.22	.18	.15	.18	.15	.13	.11



C Range: 0 - 360DEG
 C Interval: 15.0DEG
 Test Speed: HIGH
 Temperature: 25.0DEG
 Operators: Alan Wang
 Test Date: 10 August 2023

γ Range: 0 - 180DEG
 γ Interval: 1.0DEG
 Test System: EVERFINE GO-R5000_V2 SYSTEM V2.00.416
 Humidity: 43.6%
 Test Distance: 2.500m [K=1.0391]
 Remarks:

WEC AND CCEC

Test:U:120.00V I:0.1151A P:13.600W PF:0.9850 Freq:60.00Hz Lamp Flux:1204.07x1 lm		
NAME: ASD-LVF26M-3D15BK/CH_5000K	TYPE:LED	WEIGHT:
SPEC.:N/A	DIM.:	SERIAL No.:
MFR.: ASD Lighting Corp	SUR.:	Shielding Angle:

ρcc	80%			70%			50%			30%			10%			0
ρw	50%	30%	10%	50%	30%	10%	50%	30%	10%	50%	30%	10%	50%	30%	10%	0
ρfc	20%			20%			20%			20%			20%			0
RCR	RCR:Room Cavity Ratio						Wall Exitance Coefficients(WEC)									
0.0																
1.0	.329	.187	.059	.306	.175	.056	.265	.152	.049	.227	.131	.042	.192	.111	.036	
2.0	.290	.159	.049	.270	.149	.046	.232	.129	.040	.197	.111	.035	.165	.093	.029	
3.0	.261	.139	.042	.243	.130	.039	.208	.113	.034	.177	.097	.030	.147	.081	.025	
4.0	.238	.124	.036	.221	.116	.034	.189	.100	.030	.160	.086	.026	.133	.072	.022	
5.0	.218	.111	.032	.203	.104	.030	.173	.090	.027	.146	.077	.023	.121	.065	.019	
6.0	.201	.101	.029	.187	.094	.027	.160	.082	.024	.135	.070	.021	.111	.059	.017	
7.0	.187	.092	.026	.173	.086	.025	.148	.075	.022	.125	.064	.019	.103	.054	.016	
8.0	.174	.085	.024	.162	.080	.022	.138	.069	.020	.117	.059	.017	.096	.049	.014	
9.0	.163	.079	.022	.151	.074	.021	.130	.064	.018	.109	.055	.016	.090	.046	.013	
10.0	.153	.073	.020	.142	.069	.019	.122	.060	.017	.103	.051	.015	.085	.043	.012	

ρcc	80%			70%			50%			30%			10%			0
ρw	50%	30%	10%	50%	30%	10%	50%	30%	10%	50%	30%	10%	50%	30%	10%	0
ρfc	20%			20%			20%			20%			20%			0
RCR	RCR:Room Cavity Ratio						Ceiling Cavity Exitance Coefficients(CCEC)									
0.0	.568	.568	.568	.486	.486	.486	.332	.332	.332	.190	.190	.190	.061	.061	.061	
1.0	.563	.537	.514	.481	.461	.442	.329	.317	.306	.190	.183	.178	.061	.059	.058	
2.0	.556	.515	.482	.476	.444	.416	.326	.307	.290	.188	.179	.170	.060	.058	.055	
3.0	.548	.500	.461	.470	.431	.400	.323	.300	.280	.186	.175	.165	.060	.057	.054	
4.0	.541	.488	.447	.465	.422	.389	.319	.294	.274	.185	.172	.162	.059	.056	.053	
5.0	.534	.479	.438	.459	.414	.381	.316	.289	.269	.183	.170	.160	.059	.055	.053	
6.0	.528	.471	.431	.454	.408	.375	.313	.286	.265	.182	.168	.158	.059	.055	.052	
7.0	.522	.465	.426	.449	.403	.371	.310	.283	.263	.180	.167	.156	.058	.055	.052	
8.0	.516	.460	.422	.444	.399	.368	.307	.280	.261	.179	.165	.155	.058	.054	.051	
9.0	.510	.456	.419	.439	.395	.365	.304	.278	.259	.177	.164	.155	.057	.054	.051	
10.0	.505	.452	.416	.435	.392	.363	.302	.276	.258	.176	.163	.154	.057	.054	.051	

C Range: 0 - 360DEG
 C Interval: 15.0DEG
 Test Speed: HIGH
 Temperature: 25.0DEG
 Operators: Alan Wang
 Test Date: 10 August 2023

γ Range: 0 - 180DEG
 γ Interval: 1.0DEG
 Test System: EVERFINE GO-R5000_V2 SYSTEM V2.00.416
 Humidity: 43.6%
 Test Distance: 2.500m [K=1.0391]
 Remarks:

UGR(Unified Glare Rating) Table

Test:U:120.00V I:0.1151A P:13.600W PF:0.9850 Freq:60.00Hz Lamp Flux:1204.07x1 lm										
NAME: ASD-LVF26M-3D15BK/CH_5000K					TYPE:LED			WEIGHT:		
SPEC.:N/A					DIM.:			SERIAL No.:		
MFR.: ASD Lighting Corp					SUR.:			Shielding Angle:		
ceiling/cavity	0.7	0.7	0.5	0.5	0.3	0.7	0.7	0.5	0.5	0.3
walls	0.5	0.3	0.5	0.3	0.3	0.5	0.3	0.5	0.3	0.3
working plane	0.2	0.2	0.2	0.2	0.2	0.2	0.2	0.2	0.2	0.2
Room dimensions	Viewed crosswise					Viewed endwise				
x = 2H y = 2H	13.7	14.7	14.6	15.6	16.7	15.7	16.7	16.6	17.6	18.7
3H	15.6	16.4	16.4	17.3	18.5	18.5	19.4	19.4	20.3	21.4
4H	16.4	17.2	17.3	18.1	19.3	20.1	20.9	21.0	21.8	23.0
6H	17.2	18.0	18.1	18.9	20.1	21.8	22.6	22.7	23.5	24.7
8H	17.6	18.3	18.5	19.3	20.5	22.8	23.5	23.7	24.4	25.6
12H	18.0	18.7	18.9	19.6	20.8	23.9	24.6	24.8	25.5	26.7
4H 2H	15.2	16.0	16.1	16.9	18.1	16.5	17.3	17.4	18.2	19.4
3H	17.4	18.1	18.3	19.1	20.3	19.5	20.2	20.4	21.2	22.4
4H	18.6	19.2	19.5	20.2	21.4	21.2	21.9	22.2	22.8	24.1
6H	19.7	20.3	20.7	21.2	22.5	23.2	23.7	24.1	24.7	25.9
8H	20.2	20.8	21.2	21.8	23.0	24.2	24.7	25.2	25.7	27.0
12H	20.8	21.2	21.7	22.2	23.5	25.4	25.9	26.4	26.9	28.2
8H 4H	19.9	20.4	20.8	21.4	22.6	21.8	22.3	22.8	23.3	24.6
6H	21.5	22.0	22.5	23.0	24.3	24.0	24.5	25.0	25.5	26.8
8H	22.4	22.8	23.4	23.8	25.1	25.3	25.7	26.3	26.7	28.0
12H	23.2	23.6	24.3	24.6	25.9	26.8	27.1	27.8	28.1	29.5
12H 4H	20.2	20.7	21.2	21.7	23.0	21.9	22.4	22.9	23.4	24.7
6H	22.1	22.5	23.1	23.5	24.9	24.3	24.7	25.3	25.7	27.0
8H	23.2	23.6	24.2	24.6	25.9	25.7	26.0	26.7	27.0	28.4
Variations with the observer position at spacings:										
S = 1.0H	+ 0.1 / - 0.1					+ 0.1 / - 0.1				
1.5H	+ 0.2 / - 0.3					+ 0.2 / - 0.3				
2.0H	+ 0.3 / - 0.4					+ 0.3 / - 0.4				

CIE Pub.117, 1204 lm Total Lamp Luminous Flux Corrected (8log(F/F0) = 0.6)
 Area: 0.046 m2

C Range: 0 - 360DEG
 C Interval: 15.0DEG
 Test Speed: HIGH
 Temperature: 25.0DEG
 Operators: Alan Wang
 Test Date: 10 August 2023

γ Range: 0 - 180DEG
 γ Interval: 1.0DEG
 Test System: EVERFINE GO-R5000_V2 SYSTEM V2.00.416
 Humidity: 43.6%
 Test Distance: 2.500m [K=1.0391]
 Remarks:

UTILIZATION FACTORS TABLE

Test:U:120.00V I:0.1151A P:13.600W PF:0.9850 Freq:60.00Hz Lamp Flux:1204.07x1 lm		
NAME: ASD-LVF26M-3D15BK/CH_5000K	TYPE:LED	WEIGHT:
SPEC.:N/A	DIM.:	SERIAL No.:
MFR.: ASD Lighting Corp	SUR.:	Shielding Angle:

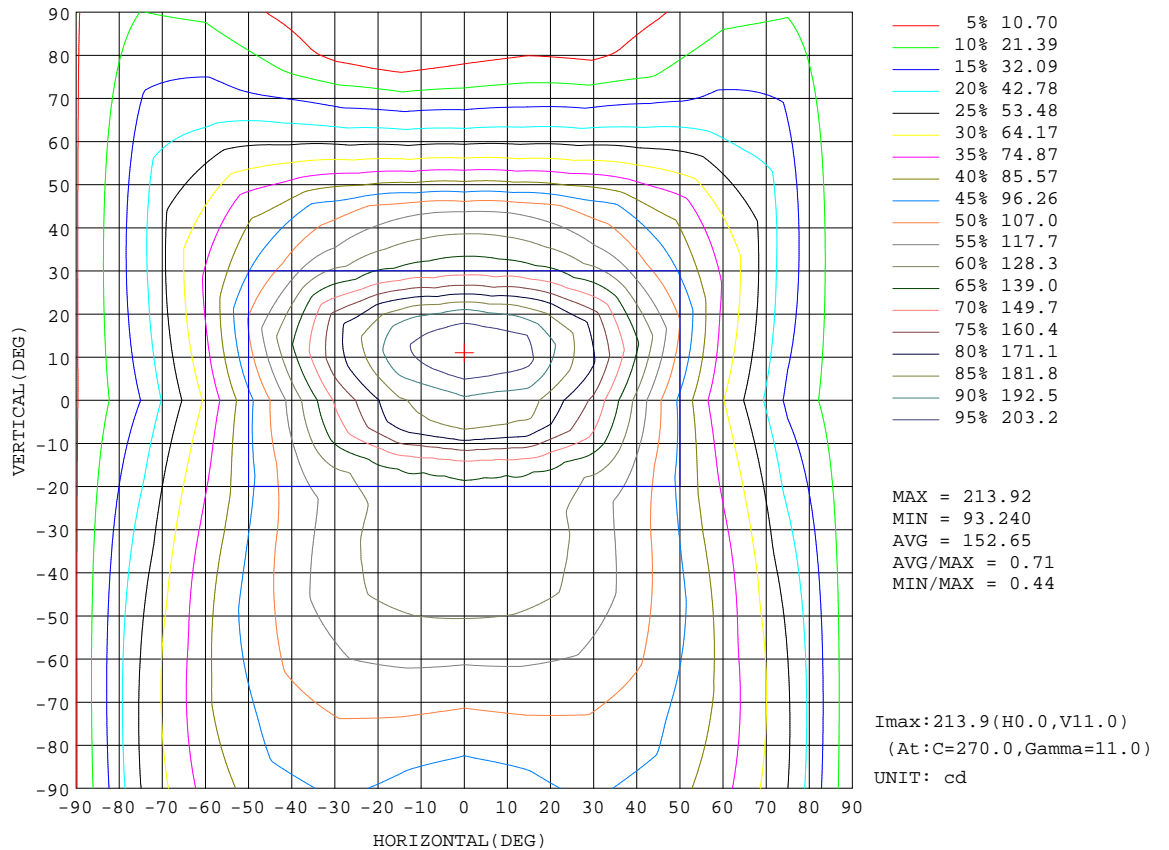
REFLECTANCE										
Ceiling	0.8	0.8	0.8	0.7	0.7	0.7	0.5	0.5	0.5	0
Walls	0.7	0.5	0.3	0.7	0.5	0.3	0.7	0.5	0.3	0
Working plane	0.2	0.2	0.2	0.2	0.2	0.2	0.2	0.2	0.2	0
ROOM INDEX	UTILIZATION FACTORS(PERCENT) k(RI) x RCR = 5									
k = 0.60	42	30	24	40	29	23	35	27	21	14
0.80	51	39	31	48	37	30	42	33	28	18
1.00	58	46	38	55	44	37	48	40	33	22
1.25	65	53	45	61	50	43	53	44	39	25
1.50	70	59	51	65	55	48	56	49	43	27
2.00	78	67	59	72	63	56	62	55	49	31
2.50	82	72	65	76	68	61	65	59	53	33
3.00	86	77	70	79	72	66	68	62	57	35
4.00	90	83	77	83	77	72	71	66	62	38
5.00	93	87	81	86	81	76	73	69	65	40
ROOM INDEX	UF(total)									Direct
According to DIN EN 13032-2 2004			Suspended				SHRNOM = 1.25			

C Range: 0 - 360DEG
 C Interval: 15.0DEG
 Test Speed: HIGH
 Temperature: 25.0DEG
 Operators: Alan Wang
 Test Date: 10 August 2023

γ Range: 0 - 180DEG
 γ Interval: 1.0DEG
 Test System: EVERFINE GO-R5000_V2 SYSTEM V2.00.416
 Humidity: 43.6%
 Test Distance: 2.500m [K=1.0391]
 Remarks:

ISOCANDELA DIAGRAM

Test:U:120.00V I:0.1151A P:13.600W PF:0.9850 Freq:60.00Hz Lamp Flux:1204.07x1 lm		
NAME: ASD-LVF26M-3D15BK/CH_5000K	TYPE:LED	WEIGHT:
SPEC.:N/A	DIM.:	SERIAL No.:
MFR.: ASD Lighting Corp	SUR.:	Shielding Angle:

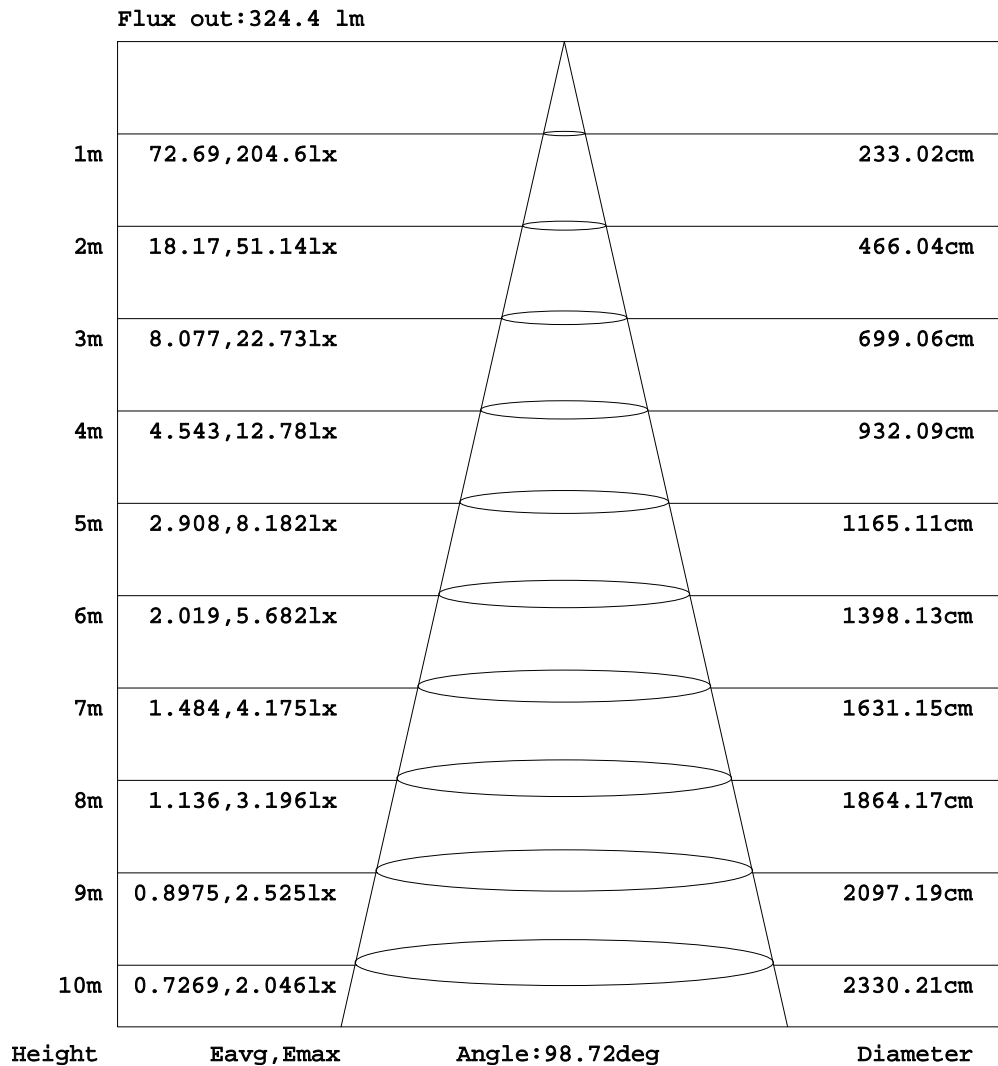


C Range: 0 - 360DEG
 C Interval: 15.0DEG
 Test Speed: HIGH
 Temperature: 25.0DEG
 Operators: Alan Wang
 Test Date: 10 August 2023

γ Range: 0 - 180DEG
 γ Interval: 1.0DEG
 Test System: EVERFINE GO-R5000_V2 SYSTEM V2.00.416
 Humidity: 43.6%
 Test Distance: 2.500m [K=1.0391]
 Remarks:

AAI Figure

Test:U:120.00V I:0.1151A P:13.600W PF:0.9850 Freq:60.00Hz Lamp Flux:1204.07x1 lm		
NAME: ASD-LVF26M-3D15BK/CH_5000K	TYPE:LED	WEIGHT:
SPEC.:N/A	DIM.:	SERIAL No.:
MFR.: ASD Lighting Corp	SUR.:	Shielding Angle:



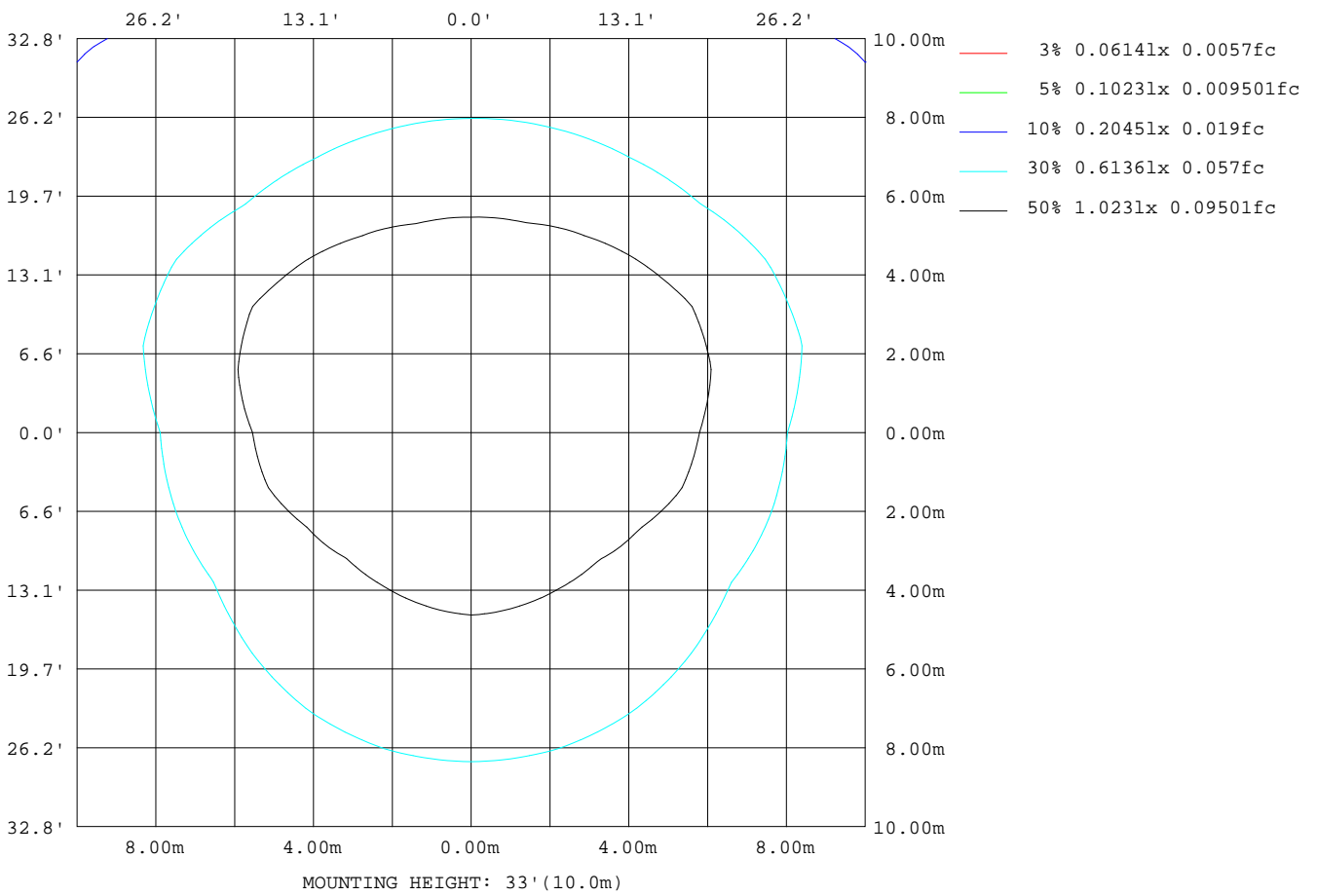
Note:The Curves indicate the illuminated area and the average illumination when the luminaire is at different distance.

C Range: 0 - 360DEG
 C Interval: 15.0DEG
 Test Speed: HIGH
 Temperature: 25.0DEG
 Operators:Alan Wang
 Test Date:10 August 2023

γ Range: 0 - 180DEG
 γ Interval: 1.0DEG
 Test System:EVERFINE GO-R5000_V2 SYSTEM V2.00.416
 Humidity: 43.6%
 Test Distance:2.500m [K=1.0391]
 Remarks:

ISOLUX DIAGRAM

Test:U:120.00V I:0.1151A P:13.600W PF:0.9850 Freq:60.00Hz Lamp Flux:1204.07x1 lm		
NAME: ASD-LVF26M-3D15BK/CH_5000K	TYPE:LED	WEIGHT:
SPEC.:N/A	DIM.:	SERIAL No.:
MFR.: ASD Lighting Corp	SUR.:	Shielding Angle:



C Range: 0 - 360DEG
 C Interval: 15.0DEG
 Test Speed: HIGH
 Temperature: 25.0DEG
 Operators: Alan Wang
 Test Date: 10 August 2023

γ Range: 0 - 180DEG
 γ Interval: 1.0DEG
 Test System: EVERFINE GO-R5000_V2 SYSTEM V2.00.416
 Humidity: 43.6%
 Test Distance: 2.500m [K=1.0391]
 Remarks:

LED Avg.L Report

Test:U:120.00V I:0.1151A P:13.600W PF:0.9850 Freq:60.00Hz Lamp Flux:1204.07x1 lm		
NAME: ASD-LVF26M-3D15BK/CH_5000K	TYPE:LED	WEIGHT:
SPEC.:N/A	DIM.:	SERIAL No.:
MFR.: ASD Lighting Corp	SUR.:	Shielding Angle:

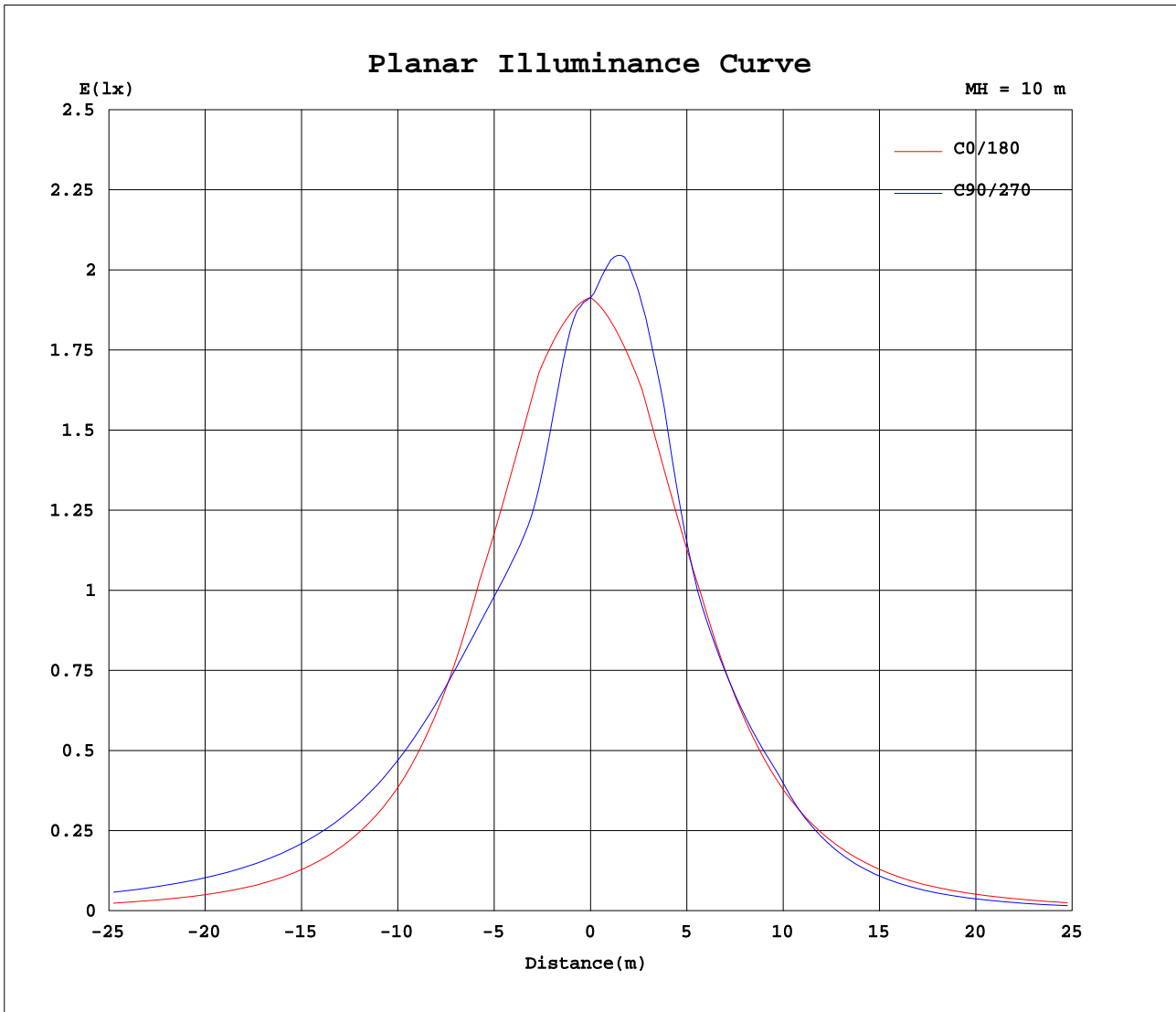
AvgL	cd/m2
L_0~180(65)av	2763
L_0~180(75)av	2591
L_0~180(85)av	4430
L_90~270(65)av	3897
L_90~270(75)av	5020
L_90~270(85)av	11726
L_45(65)av	4367
L_45(75)av	5679
L_45(85)av	13944

Standard: GB/T 29293-2012

C Range: 0 - 360DEG
C Interval: 15.0DEG
Test Speed: HIGH
Temperature: 25.0DEG
Operators: Alan Wang
Test Date: 10 August 2023

γ Range: 0 - 180DEG
 γ Interval: 1.0DEG
Test System: EVERFINE GO-R5000_V2 SYSTEM V2.00.416
Humidity: 43.6%
Test Distance: 2.500m [K=1.0391]
Remarks:

Planar Illuminance Curve



C Range: 0 - 360DEG
 C Interval: 15.0DEG
 Test Speed: HIGH
 Temperature: 25.0DEG
 Operators: Alan Wang
 Test Date: 10 August 2023

γ Range: 0 - 180DEG
 γ Interval: 1.0DEG
 Test System: EVERFINE GO-R5000_V2 SYSTEM V2.00.416
 Humidity: 43.6%
 Test Distance: 2.500m [K=1.0391]
 Remarks:

LUMINOUS DISTRIBUTION INTENSITY DATA

Test:U:120.00V I:0.1151A P:13.600W PF:0.9850 Freq:60.00Hz Lamp Flux:1204.07x1 lm		
NAME: ASD-LVF26M-3D15BK/CH_5000K	TYPE:LED	WEIGHT:
SPEC.:N/A	DIM.:	SERIAL No.:
MFR.: ASD Lighting Corp	SUR.:	Shielding Angle:

Table--1

UNIT: cd

C(DEG) γ (DEG)	0	15	30	45	60	75	90	105	120	135	150	165	180	195	210	225	240	255	270
0	191	191	191	191	191	191	191	191	191	191	191	191	191	191	191	191	191	191	191
5	190	189	188	188	187	187	187	186	186	186	187	187	188	190	193	197	200	202	204
10	188	186	183	178	172	169	168	168	171	176	181	183	184	189	197	203	208	211	214
15	186	183	174	162	152	147	147	147	151	159	171	178	181	189	199	205	207	208	210
20	177	173	160	146	139	138	138	137	138	144	156	168	171	183	195	201	198	196	197
25	168	161	144	135	135	136	137	136	134	134	141	156	161	176	187	189	181	170	169
30	158	150	133	131	134	136	138	136	134	129	130	145	151	168	177	170	155	147	147
35	142	136	125	128	133	136	137	136	133	128	123	131	136	156	165	147	137	135	136
40	125	122	119	126	132	135	136	135	132	126	118	119	122	143	147	129	126	126	125
45	109	109	114	123	130	133	133	133	130	124	113	108	107	130	126	118	117	115	113
50	94.1	98.6	109	121	127	129	129	129	128	121	109	97.8	93.2	115	109	108	103	91.9	88.6
55	79.3	89.2	105	117	124	125	124	125	124	118	105	89.0	79.5	100	97.6	97.1	80.9	70.9	68.3
60	64.6	80.8	100	114	120	120	119	120	120	115	101	81.2	65.7	85.1	87.7	77.7	62.2	53.2	51.4
65	52.9	74.6	95.9	110	116	115	114	116	116	111	97.1	75.2	54.5	73.9	76.4	60.3	46.4	38.9	37.7
70	41.2	68.8	92.0	106	111	110	108	111	112	107	93.2	69.4	43.3	63.8	61.3	45.7	33.3	26.2	26.2
75	29.6	62.9	87.8	102	107	106	103	106	108	103	89.1	63.7	32.1	53.6	46.9	33.7	21.9	15.0	16.2
80	23.8	59.9	84.5	98.5	103	101	98.4	101	104	99.5	85.5	60.4	24.8	43.1	36.1	23.2	10.7	3.06	6.84
85	18.1	56.9	81.6	96.0	99.8	96.9	93.9	97.4	100	96.5	82.3	57.0	17.4	32.4	27.6	16.4	4.39	0.17	0.13
90	12.4	53.6	78.5	93.2	97.5	95.1	91.8	95.1	97.5	93.4	78.7	53.3	10.1	21.5	19.4	10.1	2.61	0.18	0.13
95	18.6	57.1	82.0	96.4	100	97.6	94.4	97.7	100	96.4	82.0	56.6	16.6	31.5	26.5	15.4	5.00	0.95	0.13
100	24.8	60.3	85.1	99.4	104	102	98.8	102	104	99.2	85.0	59.5	23.2	41.5	33.7	21.2	11.2	7.81	7.13
105	31.1	63.5	88.5	103	108	107	104	107	108	103	88.4	62.6	29.8	51.5	43.9	31.5	21.3	17.0	15.8
110	42.5	68.9	92.4	107	112	111	109	111	112	107	92.5	68.3	41.5	62.0	58.7	43.3	32.0	26.6	25.0
115	53.9	74.3	96.1	110	116	116	114	116	117	111	96.5	74.0	53.1	72.2	74.3	57.8	44.5	38.0	35.8
120	65.3	79.8	99.7	114	120	120	119	121	121	115	101	80.0	64.8	83.3	87.2	75.6	59.9	51.3	48.7
125	78.2	86.7	103	117	123	125	124	125	124	118	105	88.0	79.0	99.1	97.7	95.7	78.7	68.3	65.0
130	91.1	94.7	107	119	127	129	128	129	128	121	109	97.0	93.1	115	109	108	101	89.5	85.3
135	104	104	110	121	129	132	132	133	130	123	112	107	107	130	125	118	117	114	110
140	118	114	113	123	130	133	134	134	131	125	116	119	123	144	145	130	127	125	124
145	132	126	117	123	130	134	135	134	131	125	121	131	138	158	164	146	138	135	134
150	146	138	123	124	129	132	134	133	131	126	127	145	154	171	177	168	155	146	145
155	155	149	134	126	128	130	131	131	130	129	138	155	162	178	188	187	178	167	166
160	165	161	148	136	130	129	130	130	132	139	153	166	171	185	196	200	196	192	193
165	175	171	162	151	142	138	138	139	144	154	166	175	180	190	199	203	205	205	206
170	178	175	173	168	162	159	159	160	164	170	175	178	181	188	195	200	204	206	208
175	181	180	179	178	178	177	178	178	178	179	180	181	183	185	189	192	195	197	198
180	184	184	184	184	184	184	184	184	184	184	184	184	184	184	184	184	184	184	184

C Range: 0 - 360DEG
 C Interval: 15.0DEG
 Test Speed: HIGH
 Temperature: 25.0DEG
 Operators: Alan Wang
 Test Date: 10 August 2023

γ Range: 0 - 180DEG
 γ Interval: 1.0DEG
 Test System: EVERFINE GO-R5000_V2 SYSTEM V2.00.416
 Humidity: 43.6%
 Test Distance: 2.500m [K=1.0391]
 Remarks:

LUMINOUS DISTRIBUTION INTENSITY DATA

Test:U:120.00V I:0.1151A P:13.600W PF:0.9850 Freq:60.00Hz Lamp Flux:1204.07x1 lm		
NAME: ASD-LVF26M-3D15BK/CH_5000K	TYPE:LED	WEIGHT:
SPEC.:N/A	DIM.:	SERIAL No.:
MFR.: ASD Lighting Corp	SUR.:	Shielding Angle:

Table--2

UNIT: cd

C(DEG) γ (DEG)	285	300	315	330	345														
0	191	191	191	191	191														
5	203	201	198	195	192														
10	212	210	206	201	193														
15	209	209	209	204	195														
20	196	200	205	201	190														
25	171	182	191	192	182														
30	148	157	171	180	174														
35	136	139	148	166	161														
40	126	127	131	146	146														
45	116	118	119	126	131														
50	92.3	103	109	109	115														
55	71.2	80.7	96.7	97.6	98.8														
60	54.0	61.9	76.5	87.2	82.7														
65	40.6	46.1	58.7	74.4	71.5														
70	29.2	33.1	43.8	58.7	61.2														
75	19.9	21.8	31.3	43.6	50.7														
80	11.1	11.3	20.5	33.2	40.8														
85	1.95	4.86	14.8	25.7	30.8														
90	0.15	2.32	9.50	18.5	20.8														
95	0.76	4.49	15.0	25.9	31.4														
100	7.11	10.6	21.1	33.7	42.0														
105	16.5	20.6	31.1	44.1	52.6														
110	26.0	31.3	42.8	59.0	63.0														
115	37.4	43.5	57.0	74.6	73.2														
120	50.6	58.7	74.7	87.1	84.4														
125	67.5	77.5	94.9	97.1	99.1														
130	88.8	100	107	108	114														
135	114	116	117	124	128														
140	124	125	129	144	140														
145	134	136	145	162	153														
150	145	153	166	174	164														
155	166	177	185	184	172														
160	192	194	198	192	179														
165	204	203	200	195	185														
170	205	202	198	192	184														
175	196	194	191	187	184														
180	184	184	184	184	184														

C Range: 0 - 360DEG
 C Interval: 15.0DEG
 Test Speed: HIGH
 Temperature: 25.0DEG
 Operators: Alan Wang
 Test Date: 10 August 2023

γ Range: 0 - 180DEG
 γ Interval: 1.0DEG
 Test System: EVERFINE GO-R5000_V2 SYSTEM V2.00.416
 Humidity: 43.6%
 Test Distance: 2.500m [K=1.0391]
 Remarks: