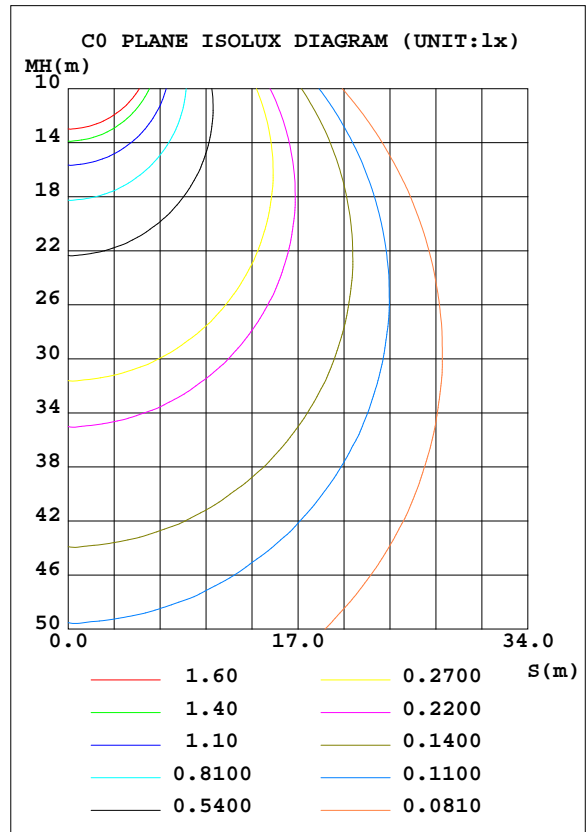
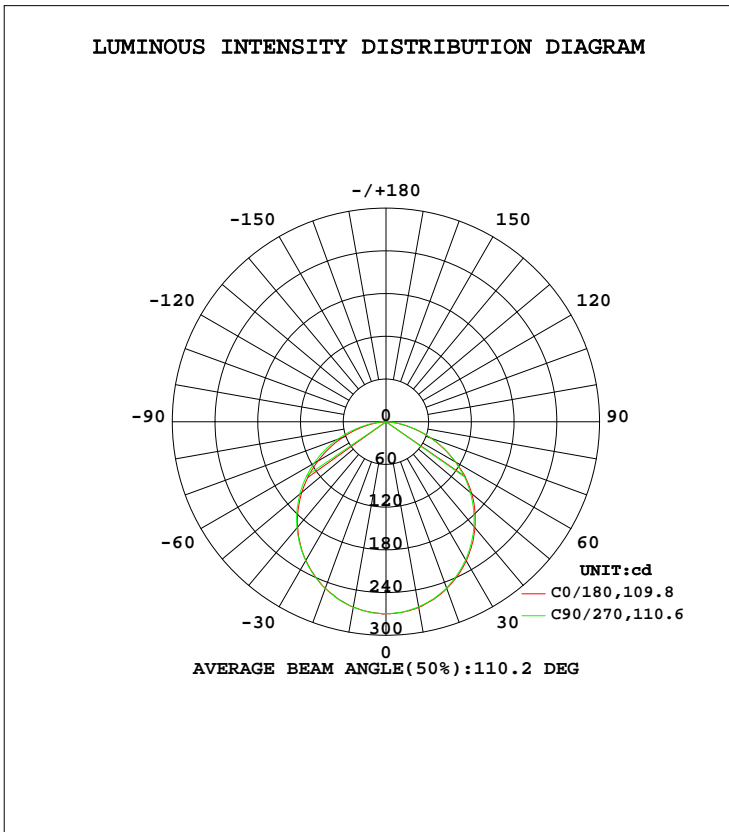


LUMINAIRE PHOTOMETRIC TEST REPORT

Test:U:120.1V I:0.0969A P:10.88W PF:0.9350 Lamp Flux:744.827x1 lm		
NAME: LED luminaire	TYPE:N/A	WEIGHT:N/A
SPEC.:ASD-MPS-5D10CC-BK 4000K	DIM.: N/A	SERIAL No.:N/A
MFR.: ASD LIGHTING CORP	SUR.:N/A	Shielding Angle:N/A

DATA OF LAMP		PHOTOMETRIC DATA			
MODEL	PSZ2S230215005-10	Imax(cd)	270.2	S/MH(C0/180)	1.24
NOMINAL POWER(W)		LOR(%)	100.0	S/MH(C90/270)	1.24
RATED VOLTAGE(V)	120	TOTAL FLUX(lm)	744.83	η UP, DN(C0-180)	0.1,50.4
NOMINAL FLUX(lm)	744.827	CIE CLASS	DIRECT	η UP, DN(C180-360)	0.0,49.5
LAMPS INSIDE	1	η up(%)	0.1	CIBSE SHR NOM	1.25
TEST VOLTAGE(V)	120	η down(%)	99.9	CIBSE SHR MAX	1.35



C Range: 0 - 360DEG
 C Interval: 22.5DEG
 Test Speed: HIGH
 Temperature:24.6DEG
 Operators:Evan
 Test Date:2023-02-21

γ Range: 0 - 180DEG
 γ Interval: 1.0DEG
 Test System:EVERFINE GO-R5000_V2 SYSTEM V2.0.351
 Humidity:51%
 Test Distance:2.532m [K=1.0000]
 Remarks:

ZONAL FLUX DIAGRAM

ZONAL FLUX DIAGRAM:

γ	C0	C45	C90	C135	C180	C225	C270	C315	γ	Φ zone	Φ total	%lum, lamp
10	264.2	264.3	264.5	264.9	264.6	264.3	263.9	264.0	0- 10	25.48	25.48	3.42,3.42
20	248.9	248.9	249.4	249.9	249.4	249.0	248.7	248.2	10- 20	72.72	98.20	13.2,13.2
30	224.9	224.7	225.6	226.4	225.5	224.7	224.2	223.3	20- 30	109.6	207.8	27.9,27.9
40	193.1	194.0	194.6	195.4	194.3	193.4	192.3	191.6	30- 40	131.3	339.1	45.5,45.5
50	154.3	156.9	158.0	158.8	157.4	156.2	154.6	153.7	40- 50	135.3	474.4	63.7,63.7
60	110.6	114.3	116.7	117.5	112.9	113.5	112.2	109.8	50- 60	120.9	595.3	79.9,79.9
70	65.19	68.81	72.49	71.83	66.79	67.38	67.79	64.42	60- 70	89.88	685.2	92,92
80	23.06	25.51	29.32	27.34	24.00	23.91	25.51	22.21	70- 80	48.59	733.8	98.5,98.5
90	0.0481	0.0604	0.0448	0.1456	0.0270	0.0084	0.0087	0.0093	80- 90	10.29	744.1	99.9,99.9
100	0.0552	0.0615	0.0602	0.0608	0.0164	0.0191	0.0204	0.0241	90-100	0.0359	744.1	99.9,99.9
110	0.0729	0.0804	0.0723	0.0782	0.0388	0.0450	0.0403	0.0462	100-110	0.0554	744.2	99.9,99.9
120	0.0910	0.0964	0.0939	0.0959	0.0562	0.0633	0.0609	0.0643	110-120	0.0675	744.3	99.9,99.9
130	0.1345	0.1423	0.1432	0.1405	0.0914	0.0979	0.0912	0.0980	120-130	0.0867	744.3	99.9,99.9
140	0.2178	0.2337	0.2300	0.2267	0.1199	0.1302	0.1296	0.1296	130-140	0.1110	744.5	99.9,99.9
150	0.3109	0.3367	0.3486	0.3303	0.1445	0.1458	0.1623	0.1498	140-150	0.1326	744.6	100,100
160	0.3972	0.4123	0.4115	0.4105	0.1970	0.1993	0.1885	0.1900	150-160	0.1262	744.7	100,100
170	0.3731	0.3812	0.3871	0.3859	0.2366	0.2274	0.2221	0.2312	160-170	0.0874	744.8	100,100
180	0.3131	0.2927	0.2894	0.3141	0.3153	0.3036	0.2871	0.2987	170-180	0.0291	744.8	100,100
DEG	LUMINOUS INTENSITY:cd									UNIT:lm		

Conical surface Flux(90deg): 407.43 lm

%lum = 54.7%
%lamp = 54.7%

Conical surface Flux(120deg): 595.33 lm

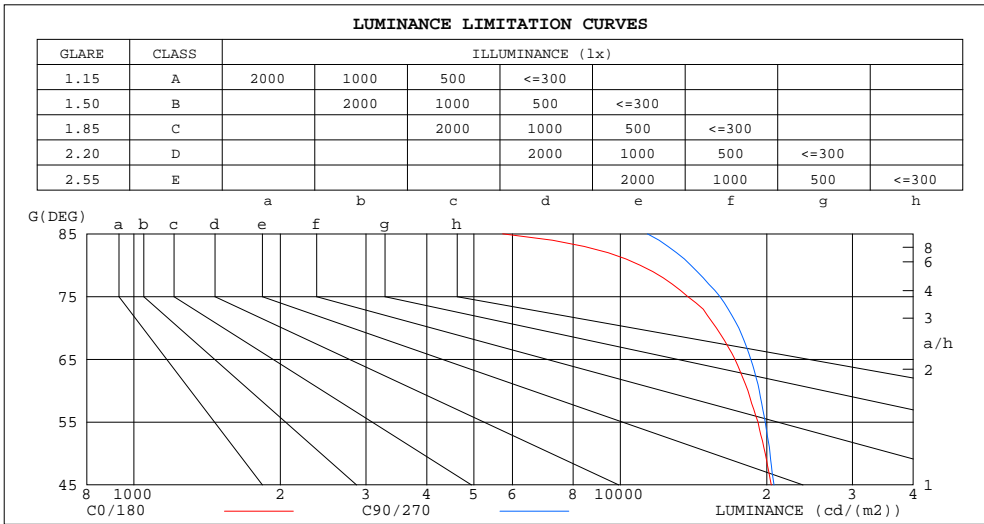
%lum = 79.9%
%lamp = 79.9%

C Range: 0 - 360DEG
C Interval: 22.5DEG
Test Speed: HIGH
Temperature:24.6DEG
Operators:Evan
Test Date:2023-02-21

γ Range: 0 - 180DEG
γ Interval: 1.0DEG
Test System:EVERFINE GO-R5000_V2 SYSTEM V2.0.351
Humidity:51%
Test Distance:2.532m [K=1.0000]
Remarks:

LUMINANCE LIMITATION CURVES

Test:U:120.1V I:0.0969A P:10.88W PF:0.9350 Lamp Flux:744.827x1 lm		
NAME: LED luminaire	TYPE:N/A	WEIGHT:N/A
SPEC.:ASD-MPS-5D10CC-BK 4000K	DIM.: N/A	SERIAL No.:N/A
MFR.: ASD LIGHTING CORP	SUR.:N/A	Shielding Angle:N/A



LUMINANCE cd/(m2)		
G(DEG)	C0/180	C90/270
85	5731	11371
80	10979	13960
75	13755	16025
70	15760	17521
65	17200	18548
60	18287	19299
55	19183	19851
50	19853	20316
45	20438	20691

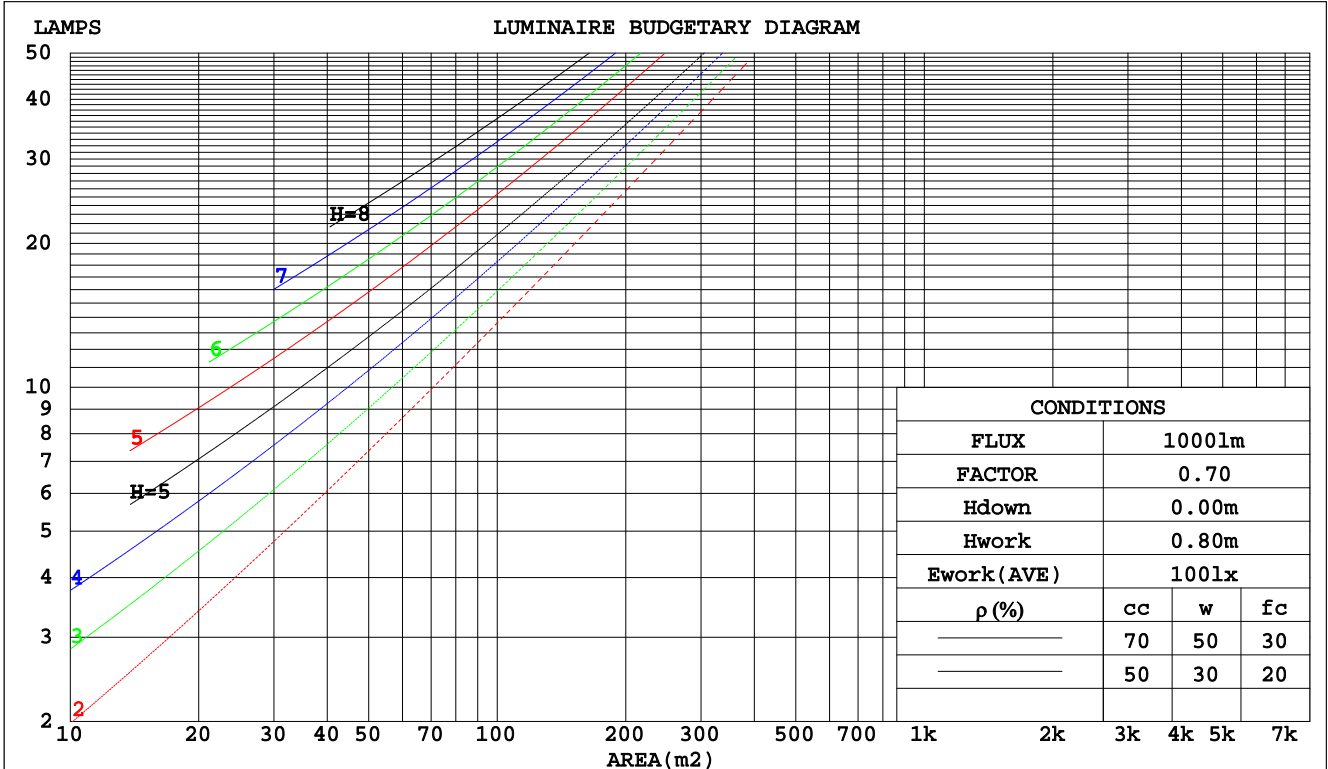
C Range: 0 - 360DEG
 C Interval: 22.5DEG
 Test Speed: HIGH
 Temperature:24.6DEG
 Operators:Evan
 Test Date:2023-02-21

γ Range: 0 - 180DEG
 γ Interval: 1.0DEG
 Test System:EVERFINE GO-R5000_V2 SYSTEM V2.0.351
 Humidity:51%
 Test Distance:2.532m [K=1.0000]
 Remarks:

CU AND LUMINAIRE BUDGETARY ESTIMATE DIAGRAM

Test:U:120.1V I:0.0969A P:10.88W PF:0.9350 Lamp Flux:744.827x1 lm		
NAME: LED luminaire	TYPE:N/A	WEIGHT:N/A
SPEC.:ASD-MPS-5D10CC-BK 4000K	DIM.: N/A	SERIAL No.:N/A
MFR.: ASD LIGHTING CORP	SUR.:N/A	Shielding Angle:N/A

pcc	80%			70%			50%			30%			10%			0
pw	50%	30%	10%	50%	30%	10%	50%	30%	10%	50%	30%	10%	50%	30%	10%	0
pfc	20%			20%			20%			20%			20%			0
RCR	RCR:Room Cavity Ratio						Coefficients of Utilization(CU)									
0.0	1.19	1.19	1.19	1.16	1.16	1.16	1.11	1.11	1.11	1.06	1.06	1.06	1.02	1.02	1.02	.00
1.0	1.04	1.00	.96	1.02	.98	.95	.98	.95	.92	.94	.91	.89	.90	.88	.86	.84
2.0	.91	.84	.79	.89	.83	.78	.86	.80	.76	.82	.78	.74	.79	.76	.72	.70
3.0	.80	.72	.65	.78	.71	.65	.75	.69	.64	.73	.67	.63	.70	.65	.61	.59
4.0	.71	.62	.55	.70	.61	.55	.67	.60	.54	.65	.58	.54	.62	.57	.53	.51
5.0	.63	.54	.48	.62	.54	.47	.60	.53	.47	.58	.52	.46	.56	.50	.46	.44
6.0	.57	.48	.42	.56	.48	.41	.54	.47	.41	.53	.46	.41	.51	.45	.40	.38
7.0	.52	.43	.37	.51	.43	.37	.49	.42	.36	.48	.41	.36	.46	.40	.36	.34
8.0	.47	.39	.33	.46	.38	.33	.45	.38	.33	.44	.37	.32	.43	.37	.32	.30
9.0	.43	.35	.30	.43	.35	.29	.42	.34	.29	.40	.34	.29	.39	.33	.29	.27
10.0	.40	.32	.27	.39	.32	.27	.38	.31	.27	.37	.31	.26	.37	.31	.26	.25



C Range: 0 - 360DEG
 C Interval: 22.5DEG
 Test Speed: HIGH
 Temperature:24.6DEG
 Operators:Evan
 Test Date:2023-02-21

γ Range: 0 - 180DEG
 γ Interval: 1.0DEG
 Test System:EVERFINE GO-R5000_V2 SYSTEM V2.0.351
 Humidity:51%
 Test Distance:2.532m [K=1.0000]
 Remarks:

WEC AND CCEC

Test:U:120.1V I:0.0969A P:10.88W PF:0.9350 Lamp Flux:744.827x1 lm		
NAME: LED luminaire	TYPE:N/A	WEIGHT:N/A
SPEC.:ASD-MPS-5D10CC-BK 4000K	DIM.: N/A	SERIAL No.:N/A
MFR.:ASD LIGHTING CORP	SUR.:N/A	Shielding Angle:N/A

ρcc	80%			70%			50%			30%			10%			0
ρw	50%	30%	10%	50%	30%	10%	50%	30%	10%	50%	30%	10%	50%	30%	10%	0
ρfc	20%			20%			20%			20%			20%			0
RCR	RCR:Room Cavity Ratio						Wall Exitance Coefficients(WEC)									
0.0																
1.0	.301	.171	.054	.294	.168	.053	.281	.161	.051	.269	.155	.050	.257	.149	.048	
2.0	.286	.157	.048	.280	.154	.047	.268	.149	.046	.257	.144	.045	.247	.140	.044	
3.0	.266	.142	.042	.261	.140	.042	.250	.136	.041	.241	.132	.040	.232	.128	.040	
4.0	.246	.128	.038	.241	.126	.037	.232	.123	.037	.224	.120	.036	.216	.117	.036	
5.0	.228	.116	.034	.224	.115	.033	.216	.112	.033	.208	.110	.033	.201	.107	.032	
6.0	.212	.106	.030	.208	.105	.030	.201	.103	.030	.194	.101	.030	.188	.099	.029	
7.0	.197	.098	.028	.194	.097	.028	.187	.095	.027	.181	.093	.027	.176	.091	.027	
8.0	.184	.090	.025	.181	.089	.025	.176	.088	.025	.170	.086	.025	.165	.085	.025	
9.0	.173	.084	.023	.170	.083	.023	.165	.082	.023	.160	.080	.023	.155	.079	.023	
10.0	.163	.078	.022	.160	.077	.022	.156	.076	.021	.151	.075	.021	.147	.074	.021	

ρcc	80%			70%			50%			30%			10%			0
ρw	50%	30%	10%	50%	30%	10%	50%	30%	10%	50%	30%	10%	50%	30%	10%	0
ρfc	20%			20%			20%			20%			20%			0
RCR	RCR:Room Cavity Ratio						Ceiling Cavity Exitance Coefficients(CCEC)									
0.0	.191	.191	.191	.163	.163	.163	.112	.112	.112	.064	.064	.064	.020	.020	.020	
1.0	.180	.157	.136	.154	.135	.117	.106	.093	.081	.061	.054	.047	.019	.017	.015	
2.0	.172	.133	.099	.148	.114	.086	.101	.079	.060	.058	.046	.035	.019	.015	.011	
3.0	.164	.115	.076	.141	.099	.066	.097	.069	.046	.056	.040	.027	.018	.013	.009	
4.0	.157	.102	.060	.135	.088	.052	.093	.061	.036	.054	.036	.022	.017	.012	.007	
5.0	.150	.091	.048	.128	.079	.042	.088	.055	.030	.051	.032	.018	.017	.011	.006	
6.0	.142	.083	.040	.122	.072	.035	.084	.050	.025	.049	.030	.015	.016	.010	.005	
7.0	.136	.076	.034	.117	.066	.030	.081	.046	.021	.047	.027	.013	.015	.009	.004	
8.0	.129	.070	.030	.111	.061	.026	.077	.043	.018	.045	.025	.011	.014	.008	.004	
9.0	.123	.065	.026	.106	.057	.023	.074	.040	.016	.043	.024	.010	.014	.008	.003	
10.0	.118	.061	.023	.101	.053	.020	.070	.037	.014	.041	.022	.009	.013	.007	.003	

C Range: 0 - 360DEG
 C Interval: 22.5DEG
 Test Speed: HIGH
 Temperature:24.6DEG
 Operators:Evan
 Test Date:2023-02-21

γ Range: 0 - 180DEG
 γ Interval: 1.0DEG
 Test System:EVERFINE GO-R5000_V2 SYSTEM V2.0.351
 Humidity:51%
 Test Distance:2.532m [K=1.0000]
 Remarks:

UGR(Unified Glare Rating) Table

Test:U:120.1V I:0.0969A P:10.88W PF:0.9350 Lamp Flux:744.827x1 lm										
NAME: LED luminaire					TYPE:N/A			WEIGHT:N/A		
SPEC.:ASD-MPS-5D10CC-BK 4000K					DIM.: N/A			SERIAL No.:N/A		
MFR.: ASD LIGHTING CORP					SUR.:N/A			Shielding Angle:N/A		
ceiling/cavity	0.7	0.7	0.5	0.5	0.3	0.7	0.7	0.5	0.5	0.3
walls	0.5	0.3	0.5	0.3	0.3	0.5	0.3	0.5	0.3	0.3
working plane	0.2	0.2	0.2	0.2	0.2	0.2	0.2	0.2	0.2	0.2
Room dimensions	Viewed crosswise					Viewed endwise				
x = 2H y = 2H	23.1	24.6	23.4	24.8	25.0	23.3	24.8	23.6	25.0	25.2
3H	24.5	25.9	24.8	26.1	26.3	24.8	26.2	25.1	26.4	26.7
4H	25.0	26.3	25.3	26.5	26.8	25.4	26.7	25.7	27.0	27.2
6H	25.3	26.5	25.6	26.8	27.1	25.8	27.0	26.1	27.3	27.6
8H	25.3	26.5	25.7	26.8	27.1	25.9	27.1	26.3	27.4	27.7
12H	25.3	26.5	25.7	26.8	27.1	26.0	27.1	26.3	27.4	27.7
4H 2H	23.7	25.0	24.0	25.3	25.6	23.9	25.2	24.2	25.5	25.7
3H	25.3	26.4	25.6	26.7	27.0	25.6	26.7	25.9	27.0	27.3
4H	25.9	26.9	26.2	27.2	27.6	26.3	27.3	26.6	27.7	28.0
6H	26.3	27.2	26.7	27.6	27.9	26.8	27.7	27.2	28.1	28.4
8H	26.4	27.2	26.8	27.6	28.0	26.9	27.8	27.4	28.2	28.6
12H	26.4	27.2	26.8	27.6	28.0	27.0	27.8	27.5	28.2	28.6
8H 4H	26.1	27.0	26.5	27.4	27.7	26.5	27.4	26.9	27.7	28.1
6H	26.6	27.4	27.1	27.8	28.2	27.1	27.8	27.6	28.2	28.7
8H	26.8	27.4	27.2	27.9	28.3	27.4	28.0	27.8	28.4	28.9
12H	26.8	27.4	27.3	27.8	28.3	27.5	28.1	28.0	28.5	29.0
12H 4H	26.1	26.9	26.6	27.3	27.7	26.5	27.3	26.9	27.7	28.1
6H	26.7	27.3	27.1	27.7	28.2	27.1	27.8	27.6	28.2	28.7
8H	26.9	27.4	27.3	27.9	28.3	27.4	28.0	27.9	28.4	28.9
Variations with the observer position at spacings:										
S = 1.0H	+ 0.2 / - 0.2					+ 0.2 / - 0.2				
1.5H	+ 0.2 / - 0.3					+ 0.2 / - 0.3				
2.0H	+ 0.2 / - 0.3					+ 0.2 / - 0.3				

CIE Pub.117 Corrected 744.8 lm Total Lamp Luminous Flux. (8log(F/F0) = -1.0)

C Range: 0 - 360DEG
 C Interval: 22.5DEG
 Test Speed: HIGH
 Temperature:24.6DEG
 Operators:Evan
 Test Date:2023-02-21

γ Range: 0 - 180DEG
 γ Interval: 1.0DEG
 Test System:EVERFINE GO-R5000_V2 SYSTEM V2.0.351
 Humidity:51%
 Test Distance:2.532m [K=1.0000]
 Remarks:

UTILIZATION FACTORS TABLE

Test:U:120.1V I:0.0969A P:10.88W PF:0.9350 Lamp Flux:744.827x1 lm		
NAME: LED luminaire	TYPE:N/A	WEIGHT:N/A
SPEC.:ASD-MPS-5D10CC-BK 4000K	DIM.: N/A	SERIAL No.:N/A
MFR.: ASD LIGHTING CORP	SUR.:N/A	Shielding Angle:N/A

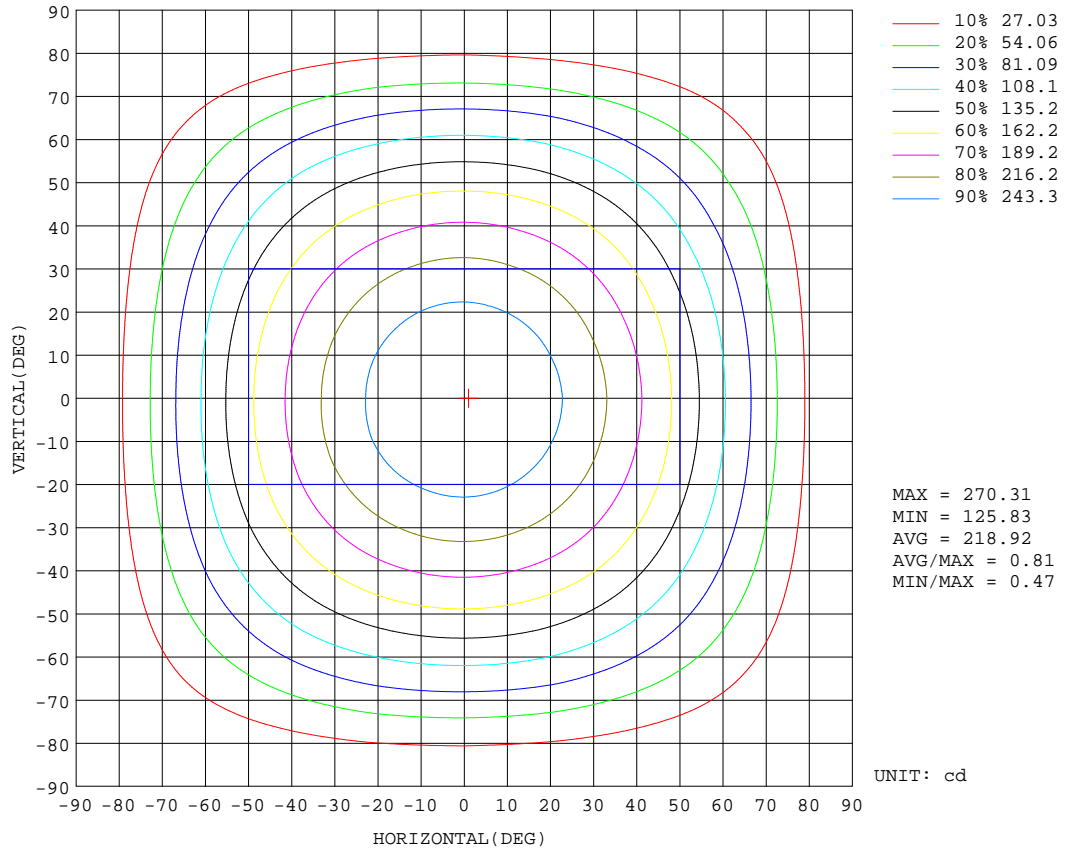
REFLECTANCE										
Ceiling	0.8	0.8	0.8	0.7	0.7	0.7	0.5	0.5	0.5	0
Walls	0.7	0.5	0.3	0.7	0.5	0.3	0.7	0.5	0.3	0
Working plane	0.2	0.2	0.2	0.2	0.2	0.2	0.2	0.2	0.2	0
ROOM INDEX	UTILIZATION FACTORS(PERCENT) $k(RI) \times RCR = 5$									
k = 0.60	58	46	40	57	46	39	56	46	39	33
0.80	68	57	49	67	56	49	65	55	49	42
1.00	77	66	58	75	65	58	73	66	58	50
1.25	84	73	66	82	73	66	80	71	65	58
1.50	89	79	72	87	78	72	84	76	70	63
2.00	95	87	81	94	86	80	90	84	78	71
2.50	99	92	86	97	90	85	93	88	83	75
3.00	103	96	91	100	94	89	96	91	87	79
4.00	107	101	96	104	99	95	100	96	92	84
5.00	109	104	100	107	102	99	102	99	96	87
ROOM INDEX	UF(total)									Direct
According to DIN EN 13032-2 2004			Suspended				SHRNOM = 1.25			

C Range: 0 - 360DEG
 C Interval: 22.5DEG
 Test Speed: HIGH
 Temperature:24.6DEG
 Operators:Evan
 Test Date:2023-02-21

γ Range: 0 - 180DEG
 γ Interval: 1.0DEG
 Test System:EVERFINE GO-R5000_V2 SYSTEM V2.0.351
 Humidity:51%
 Test Distance:2.532m [K=1.0000]
 Remarks:

ISOCANDELA DIAGRAM

Test:U:120.1V I:0.0969A P:10.88W PF:0.9350 Lamp Flux:744.827x1 lm		
NAME: LED luminaire	TYPE:N/A	WEIGHT:N/A
SPEC.:ASD-MPS-5D10CC-BK 4000K	DIM.: N/A	SERIAL No.:N/A
MFR.: ASD LIGHTING CORP	SUR.:N/A	Shielding Angle:N/A

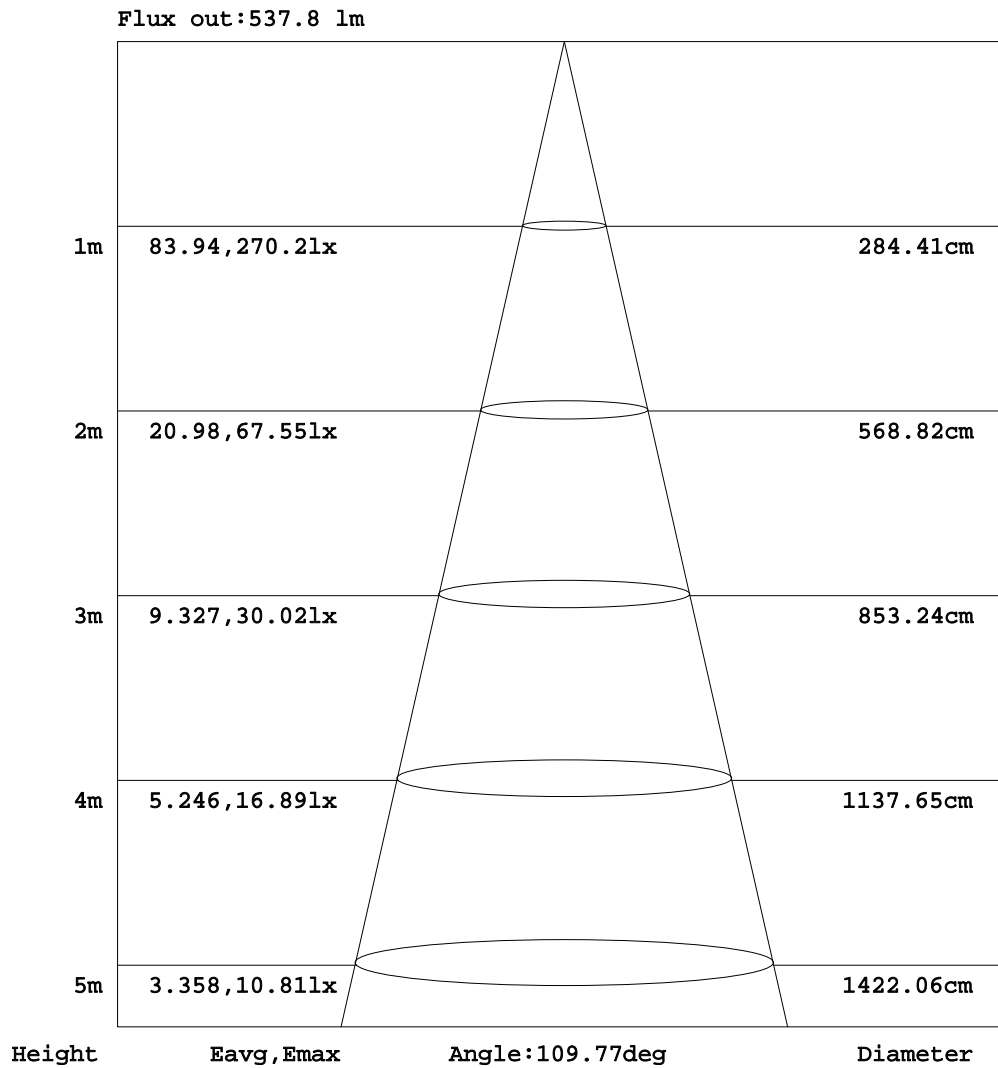


C Range: 0 - 360DEG
 C Interval: 22.5DEG
 Test Speed: HIGH
 Temperature:24.6DEG
 Operators:Evan
 Test Date:2023-02-21

γ Range: 0 - 180DEG
 γ Interval: 1.0DEG
 Test System:EVERFINE GO-R5000_V2 SYSTEM V2.0.351
 Humidity:51%
 Test Distance:2.532m [K=1.0000]
 Remarks:

AAI Figure

Test:U:120.1V I:0.0969A P:10.88W PF:0.9350 Lamp Flux:744.827x1 lm		
NAME: LED luminaire	TYPE:N/A	WEIGHT:N/A
SPEC.:ASD-MPS-5D10CC-BK 4000K	DIM.: N/A	SERIAL No.:N/A
MFR.: ASD LIGHTING CORP	SUR.:N/A	Shielding Angle:N/A



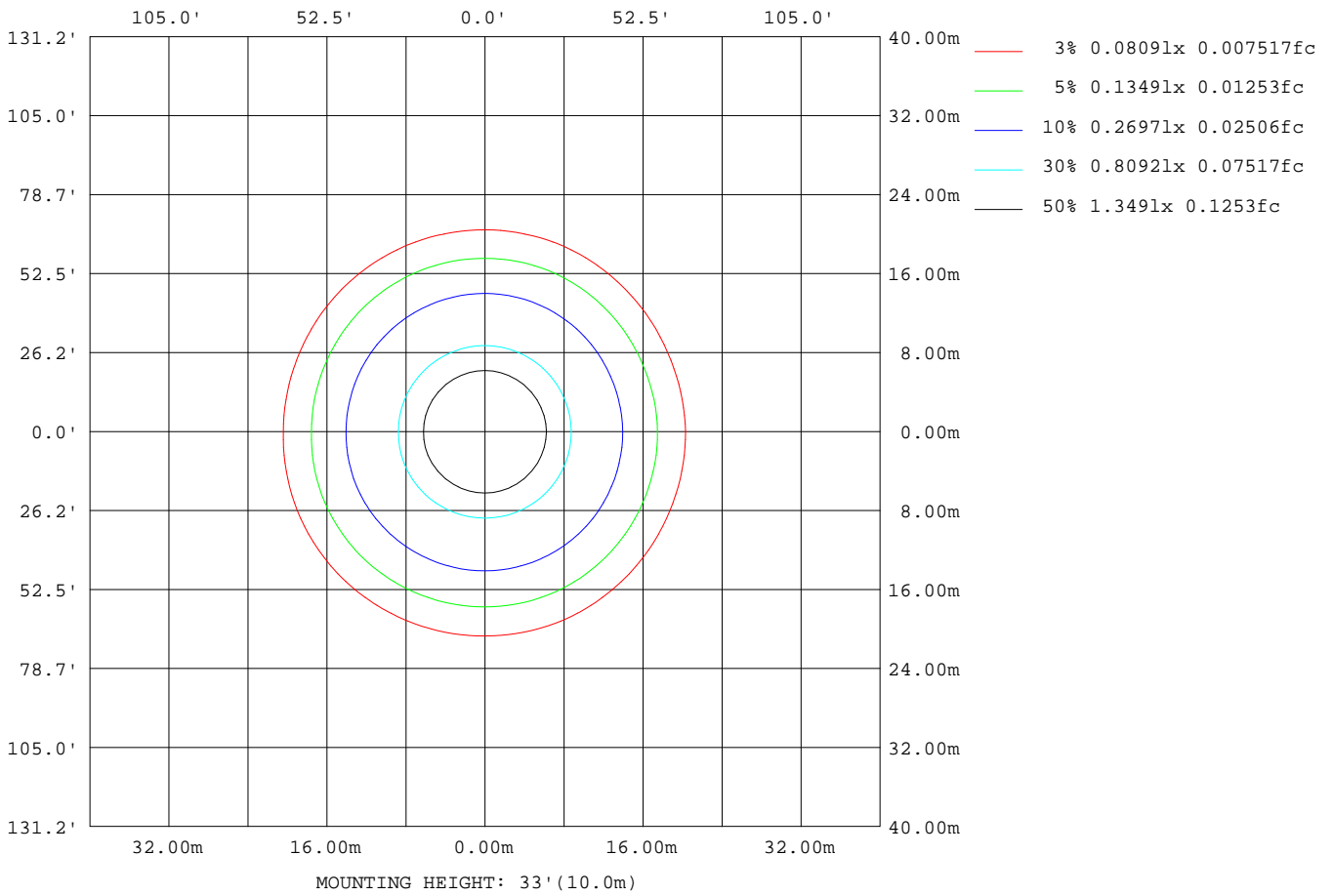
Note:The Curves indicate the illuminated area and the average illumination when the luminaire is at different distance.

C Range: 0 - 360DEG
 C Interval: 22.5DEG
 Test Speed: HIGH
 Temperature:24.6DEG
 Operators:Evan
 Test Date:2023-02-21

γ Range: 0 - 180DEG
 γ Interval: 1.0DEG
 Test System:EVERFINE GO-R5000_V2 SYSTEM V2.0.351
 Humidity:51%
 Test Distance:2.532m [K=1.0000]
 Remarks:

ISOLUX DIAGRAM

Test:U:120.1V I:0.0969A P:10.88W PF:0.9350 Lamp Flux:744.827x1 lm		
NAME: LED luminaire	TYPE:N/A	WEIGHT:N/A
SPEC.:ASD-MPS-5D10CC-BK 4000K	DIM.: N/A	SERIAL No.:N/A
MFR.: ASD LIGHTING CORP	SUR.:N/A	Shielding Angle:N/A



C Range: 0 - 360DEG
 C Interval: 22.5DEG
 Test Speed: HIGH
 Temperature:24.6DEG
 Operators:Evan
 Test Date:2023-02-21

γ Range: 0 - 180DEG
 γ Interval: 1.0DEG
 Test System:EVERFINE GO-R5000_V2 SYSTEM V2.0.351
 Humidity:51%
 Test Distance:2.532m [K=1.0000]
 Remarks:

LED Avg.L Report

Test:U:120.1V I:0.0969A P:10.88W PF:0.9350 Lamp Flux:744.827x1 lm		
NAME: LED luminaire	TYPE:N/A	WEIGHT:N/A
SPEC.:ASD-MPS-5D10CC-BK 4000K	DIM.: N/A	SERIAL No.:N/A
MFR.: ASD LIGHTING CORP	SUR.:N/A	Shielding Angle:N/A

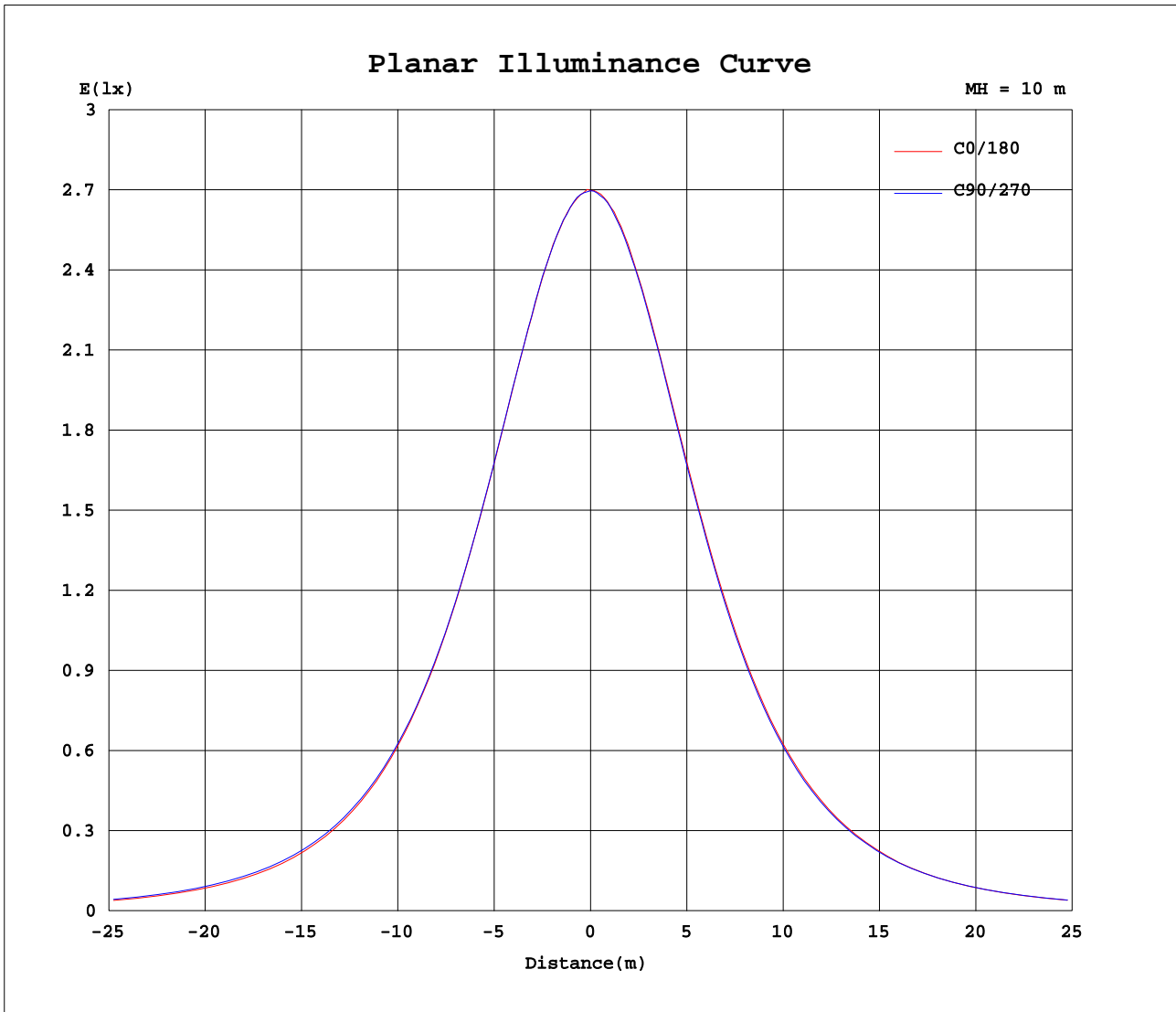
AvgL	cd/m2
L_0~180(65)av	17366
L_0~180(75)av	13967
L_0~180(85)av	6004
L_90~270(65)av	18098
L_90~270(75)av	15304
L_90~270(85)av	9824
L_45(65)av	17807
L_45(75)av	14562
L_45(85)av	7201

Standard: GB/T 29293-2012

C Range: 0 - 360DEG
 C Interval: 22.5DEG
 Test Speed: HIGH
 Temperature:24.6DEG
 Operators:Evan
 Test Date:2023-02-21

γ Range: 0 - 180DEG
 γ Interval: 1.0DEG
 Test System:EVERFINE GO-R5000_V2 SYSTEM V2.0.351
 Humidity:51%
 Test Distance:2.532m [K=1.0000]
 Remarks:

Planar Illuminance Curve



C Range: 0 - 360DEG
 C Interval: 22.5DEG
 Test Speed: HIGH
 Temperature: 24.6DEG
 Operators: Evan
 Test Date: 2023-02-21

γ Range: 0 - 180DEG
 γ Interval: 1.0DEG
 Test System: EVERFINE GO-R5000_V2 SYSTEM V2.0.351
 Humidity: 51%
 Test Distance: 2.532m [K=1.0000]
 Remarks:

LUMINOUS DISTRIBUTION INTENSITY DATA

Test:U:120.1V I:0.0969A P:10.88W PF:0.9350 Lamp Flux:744.827x1 lm		
NAME: LED luminaire	TYPE:N/A	WEIGHT:N/A
SPEC.:ASD-MPS-5D10CC-BK 4000K	DIM.: N/A	SERIAL No.:N/A
MFR.: ASD LIGHTING CORP	SUR.:N/A	Shielding Angle:N/A

Table--1

UNIT: cd

C(DEG)\γ (DEG)	0	22.5	45	67.5	90	112.5	135	157.5	180	202.5	225	247.5	270	292.5	315	337.5			
0	270	270	270	270	270	270	270	270	270	270	270	270	270	270	270	270			
5	268	268	268	268	268	268	268	269	269	268	268	268	268	268	268	268			
10	264	264	264	264	264	265	265	265	265	264	264	264	264	264	264	264			
15	258	258	258	258	258	258	259	258	258	258	258	257	258	258	257	257			
20	249	249	249	249	249	250	250	250	249	249	249	248	249	248	248	248			
25	238	238	238	238	238	239	239	239	238	238	238	237	237	237	236	237			
30	225	225	225	225	226	226	226	227	226	225	225	224	224	223	223	224			
35	210	210	210	210	211	211	212	212	211	210	210	209	209	208	208	209			
40	193	193	194	194	195	195	195	196	194	194	193	192	192	192	192	192			
45	175	175	176	176	177	177	178	178	177	176	175	174	174	174	174	173			
50	154	155	157	157	158	158	159	159	157	157	156	155	155	154	154	153			
55	133	134	136	137	138	138	139	138	136	136	136	135	134	134	133	132			
60	111	112	114	116	117	117	117	116	113	113	114	113	112	112	110	108			
65	87.9	89.0	91.6	94.4	94.8	95.3	95.0	93.1	89.7	89.6	90.5	90.8	90.3	89.8	87.1	85.5			
70	65.2	66.3	68.8	72.1	72.5	73.1	71.8	69.7	66.8	66.5	67.4	68.6	67.8	67.1	64.4	62.9			
75	43.1	44.2	46.3	49.1	50.2	50.7	48.9	47.2	44.4	44.2	44.7	46.0	45.7	44.5	42.4	41.4			
80	23.1	24.0	25.5	27.9	29.3	29.2	27.3	26.2	24.0	23.8	23.9	25.0	25.5	23.9	22.2	21.6			
85	6.04	6.84	8.27	10.3	12.0	11.2	9.56	8.39	6.62	6.34	6.76	7.77	8.73	7.21	5.78	4.97			
90	0.05	0.05	0.06	0.05	0.04	0.06	0.15	0.21	0.03	0.01	0.01	0.01	0.01	0.01	0.01	0.01			
95	0.05	0.05	0.05	0.05	0.05	0.05	0.05	0.04	0.01	0.01	0.01	0.01	0.01	0.01	0.01	0.01			
100	0.06	0.06	0.06	0.07	0.06	0.08	0.06	0.05	0.02	0.02	0.02	0.03	0.02	0.03	0.02	0.02			
105	0.07	0.07	0.08	0.07	0.07	0.07	0.08	0.07	0.03	0.03	0.04	0.04	0.03	0.04	0.04	0.04			
110	0.07	0.07	0.08	0.08	0.07	0.08	0.08	0.07	0.04	0.04	0.04	0.05	0.04	0.04	0.05	0.04			
115	0.08	0.08	0.09	0.08	0.08	0.08	0.08	0.08	0.05	0.05	0.05	0.05	0.05	0.05	0.05	0.05			
120	0.09	0.10	0.10	0.10	0.09	0.10	0.10	0.09	0.06	0.06	0.06	0.06	0.06	0.06	0.06	0.07			
125	0.11	0.11	0.12	0.12	0.11	0.12	0.11	0.11	0.08	0.08	0.08	0.08	0.07	0.08	0.08	0.08			
130	0.13	0.14	0.14	0.14	0.14	0.14	0.14	0.13	0.09	0.09	0.10	0.10	0.09	0.10	0.10	0.10			
135	0.17	0.17	0.18	0.18	0.18	0.18	0.18	0.17	0.10	0.10	0.11	0.12	0.11	0.11	0.11	0.11			
140	0.22	0.22	0.23	0.23	0.23	0.23	0.23	0.21	0.12	0.12	0.13	0.13	0.13	0.13	0.13	0.12			
145	0.27	0.28	0.29	0.30	0.30	0.30	0.28	0.27	0.13	0.13	0.14	0.15	0.15	0.15	0.14	0.14			
150	0.31	0.33	0.34	0.35	0.35	0.35	0.33	0.32	0.14	0.14	0.15	0.16	0.16	0.16	0.15	0.15			
155	0.35	0.37	0.39	0.39	0.39	0.39	0.38	0.37	0.16	0.16	0.18	0.17	0.17	0.18	0.16	0.19			
160	0.40	0.41	0.41	0.42	0.41	0.42	0.41	0.41	0.20	0.19	0.20	0.18	0.19	0.17	0.19	0.21			
165	0.40	0.40	0.41	0.41	0.42	0.41	0.41	0.40	0.21	0.21	0.20	0.21	0.21	0.21	0.21	0.23			
170	0.37	0.37	0.38	0.38	0.39	0.38	0.39	0.39	0.24	0.23	0.23	0.22	0.22	0.23	0.23	0.25			
175	0.36	0.35	0.36	0.35	0.34	0.34	0.36	0.36	0.27	0.27	0.26	0.25	0.25	0.25	0.26	0.28			
180	0.31	0.30	0.29	0.29	0.29	0.30	0.31	0.32	0.32	0.31	0.30	0.29	0.29	0.29	0.30	0.32			

C Range: 0 - 360DEG
 C Interval: 22.5DEG
 Test Speed: HIGH
 Temperature:24.6DEG
 Operators:Evan
 Test Date:2023-02-21

γ Range: 0 - 180DEG
 γ Interval: 1.0DEG
 Test System:EVERFINE GO-R5000_V2 SYSTEM V2.0.351
 Humidity:51%
 Test Distance:2.532m [K=1.0000]
 Remarks: