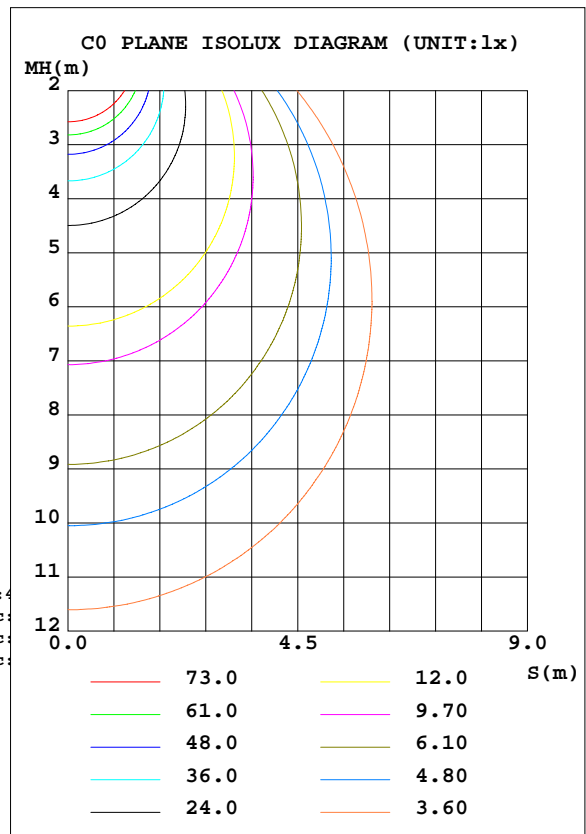
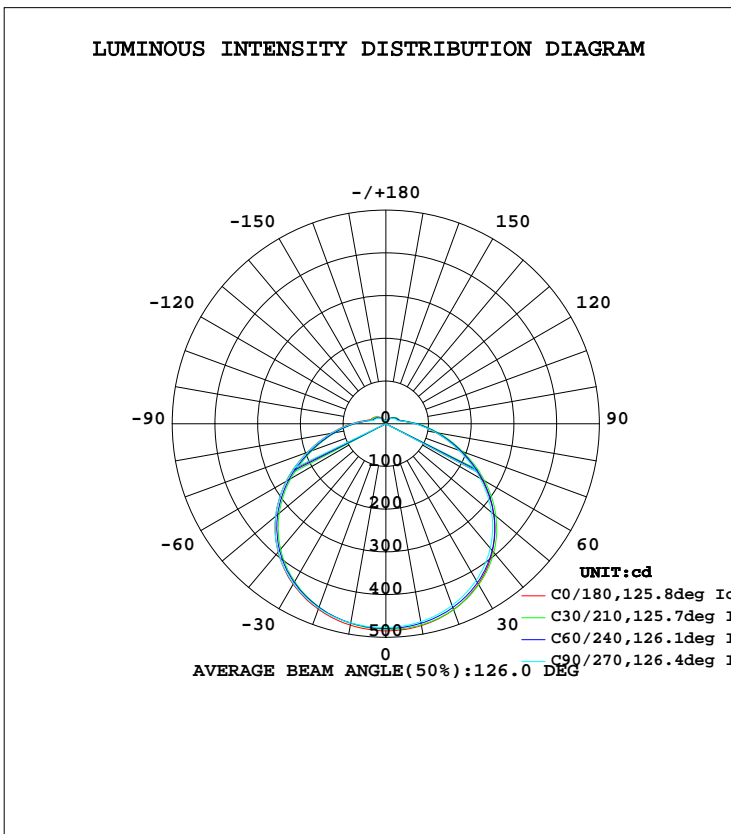


LUMINAIRE PHOTOMETRIC TEST REPORT

Test:U:120.0V I:0.2139A P:23.97W PF:0.9343 Lamp Flux:1854.33x1 lm		
NAME: ASD-LFMDR-16D24CC-BN/BZ 5000K	TYPE:LED	WEIGHT:
SPEC.:	DIM.:	SERIAL No.:
MFR.: ASD Lighting corp	SUR.:	PROTECTION ANGLE:

DATA OF LAMP		PHOTOMETRIC DATA Eff: 77.37 lm/W			
MODEL	ASD-LFMDR-16D24CC-BN/BZ	I _{max} (cd)	484.9	S/MH(C0/180)	1.33
NOMINAL POWER(W)	24	LOR(%)	100.0	S/MH(C90/270)	1.35
RATED VOLTAGE(V)	120	TOTAL FLUX(lm)	1854.3	η UP, DN(C0-180)	4.7,44.4
NOMINAL FLUX(lm)	1854.33	CIE CLASS	DIRECT	η UP, DN(C180-360)	5.1,45.8
LAMPS INSIDE	1	η up(%)	9.8	CIBSE SHR NOM	1.50
TEST VOLTAGE(V)	120	η down(%)	90.2	CIBSE SHR MAX	1.50



C Range: 0 - 360DEG
 C Interval: 15.0DEG
 Test Speed: HIGH
 Temperature:25.3DEG
 Operators:
 Test Date:2022-04-15

γ Range: 0 - 180DEG
 γ Interval: 1.0DEG
 Test System:EVERFINE GO-2000B_V1 SYSTEM V2.0.291
 Humidity:65.0%
 Test Distance:7.500m [K=1.0000]
 Remarks:

ZONAL FLUX DIAGRAM

ZONAL FLUX DIAGRAM:

γ	C0	C45	C90	C135	C180	C225	C270	C315	γ	Φ zone	Φ total	Φ lum,lamp
10	479.7	476.7	470.6	466.1	478.7	474.3	473.4	472.8	0- 10	45.39	45.39	2.45,2.45
20	463.1	461.5	452.9	447.3	462.2	457.3	459.3	459.8	10- 20	131.8	177.2	9.56,9.56
30	433.1	433.2	423.0	416.5	434.1	427.2	432.3	434.1	20- 30	204.9	382.1	20.6,20.6
40	388.7	391.2	380.2	372.5	392.3	384.4	391.9	394.5	30- 40	256.0	638.1	34.4,34.4
50	329.5	334.7	323.2	315.0	336.6	327.3	336.7	340.1	40- 50	277.5	915.6	49.4,49.4
60	258.2	265.5	254.0	246.5	269.6	258.4	269.3	272.6	50- 60	265.2	1181	63.7,63.7
70	183.4	190.0	181.9	173.7	195.4	185.3	194.9	199.2	60- 70	222.2	1403	75.7,75.7
80	118.4	124.2	118.5	112.8	131.1	121.2	129.8	132.8	70- 80	163.2	1566	84.5,84.5
90	69.45	73.33	68.70	67.86	80.77	72.68	77.22	80.31	80- 90	106.0	1672	90.2,90.2
100	38.76	40.81	37.72	39.77	46.73	42.30	41.69	45.36	90-100	61.32	1733	93.5,93.5
110	31.58	31.67	27.27	31.85	35.23	32.81	28.43	33.14	100-110	36.71	1770	95.5,95.5
120	27.59	27.84	24.04	27.07	30.64	28.15	24.84	29.23	110-120	29.30	1799	97,97
130	22.75	22.89	19.97	21.62	25.09	22.79	20.77	24.53	120-130	22.55	1822	98.3,98.3
140	17.38	17.36	15.52	15.89	19.80	16.97	16.30	18.75	130-140	15.47	1837	99.1,99.1
150	12.03	12.21	11.29	10.98	14.10	10.94	11.72	13.12	140-150	9.198	1847	99.6,99.6
160	8.818	8.914	8.359	8.056	9.482	8.289	8.602	9.160	150-160	4.736	1851	99.8,99.8
170	7.468	7.513	7.376	7.244	7.440	7.395	7.255	7.630	160-170	2.263	1854	100,100
180	7.098	7.009	6.894	6.875	7.129	6.998	6.901	6.871	170-180	0.6917	1854	100,100
DEG	LUMINOUS INTENSITY:cd									UNIT:lm		

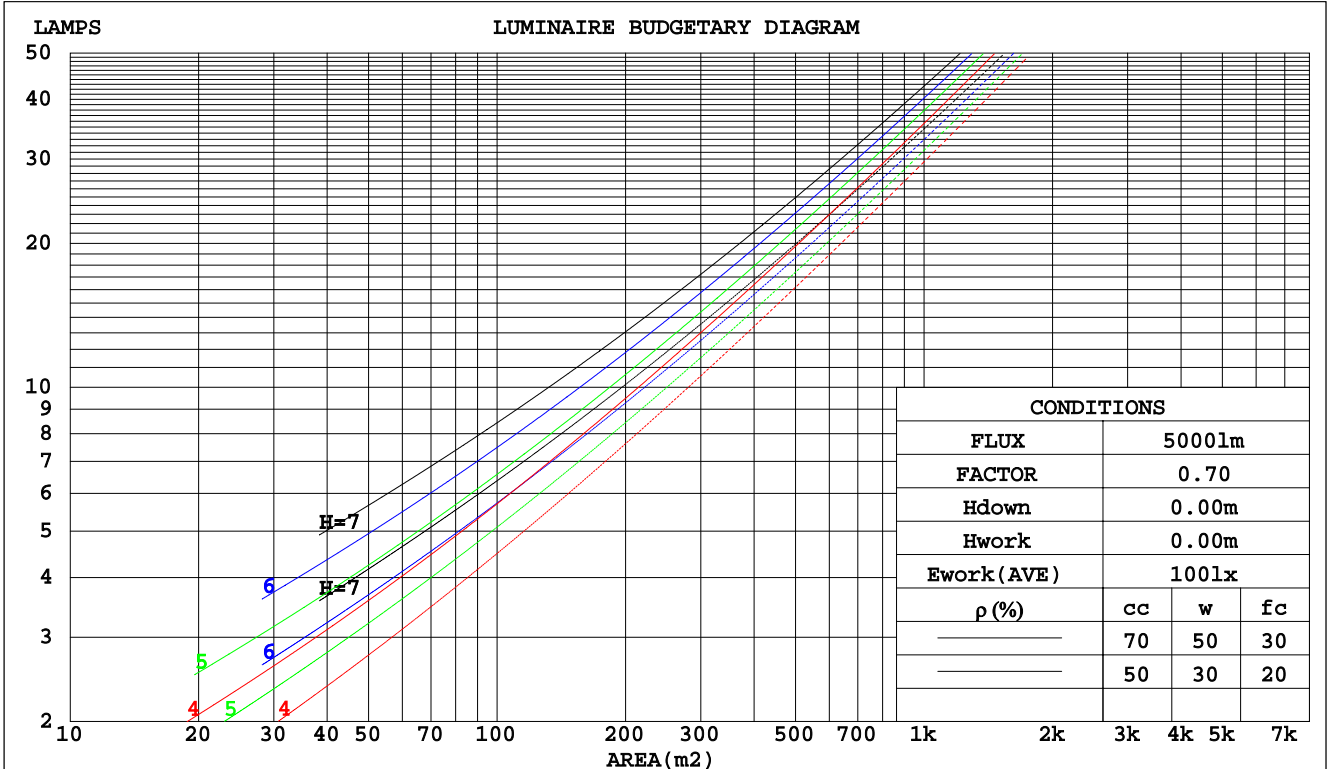
C Range: 0 - 360DEG
 C Interval: 15.0DEG
 Test Speed: HIGH
 Temperature:25.3DEG
 Operators:
 Test Date:2022-04-15

γ Range: 0 - 180DEG
 γ Interval: 1.0DEG
 Test System:EVERFINE GO-2000B_V1 SYSTEM V2.0.291
 Humidity:65.0%
 Test Distance:7.500m [K=1.0000]
 Remarks:

CU AND LUMINAIRE BUDGETARY ESTIMATE DIAGRAM

Test:U:120.0V I:0.2139A P:23.97W PF:0.9343 Lamp Flux:1854.33x1 lm		
NAME: ASD-LFMDR-16D24CC-BN/BZ 5000K	TYPE:LED	WEIGHT:
SPEC.:	DIM.:	SERIAL No.:
MFR.: ASD Lighting corp	SUR.:	PROTECTION ANGLE:

pcc	80%			70%			50%			30%			10%			0
	50%	30%	10%	50%	30%	10%	50%	30%	10%	50%	30%	10%	50%	30%	10%	0
pw																0
pfc																0
RCR	RCR:Room Cavity Ratio															
	Coefficients of Utilization(CU)															
0.0	1.17	1.17	1.17	1.13	1.13	1.13	1.06	1.06	1.06	.99	.99	.99	.93	.93	.93	.90
1.0	.99	.94	.89	.95	.91	.87	.89	.86	.82	.84	.81	.78	.79	.76	.74	.71
2.0	.85	.77	.71	.82	.75	.69	.77	.71	.66	.72	.67	.63	.68	.64	.60	.58
3.0	.74	.65	.58	.72	.63	.57	.67	.60	.55	.63	.57	.52	.59	.54	.50	.48
4.0	.65	.56	.49	.63	.54	.48	.59	.52	.46	.56	.49	.44	.52	.47	.43	.40
5.0	.58	.48	.41	.56	.47	.41	.53	.45	.39	.50	.43	.38	.47	.41	.37	.34
6.0	.52	.43	.36	.50	.42	.35	.47	.40	.34	.45	.38	.33	.42	.37	.32	.30
7.0	.47	.38	.31	.46	.37	.31	.43	.36	.30	.41	.34	.29	.39	.33	.28	.26
8.0	.43	.34	.28	.41	.33	.27	.39	.32	.27	.37	.31	.26	.35	.30	.25	.23
9.0	.39	.31	.25	.38	.30	.25	.36	.29	.24	.34	.28	.23	.33	.27	.23	.21
10.0	.36	.28	.22	.35	.27	.22	.33	.26	.22	.32	.25	.21	.30	.25	.20	.19



C Range: 0 - 360DEG
 C Interval: 15.0DEG
 Test Speed: HIGH
 Temperature: 25.3DEG
 Operators:
 Test Date: 2022-04-15

γ Range: 0 - 180DEG
 γ Interval: 1.0DEG
 Test System: EVERFINE GO-2000B_V1 SYSTEM V2.0.291
 Humidity: 65.0%
 Test Distance: 7.500m [K=1.0000]
 Remarks:

WEC AND CCEC

Test:U:120.0V I:0.2139A P:23.97W PF:0.9343 Lamp Flux:1854.33x1 lm		
NAME: ASD-LFMDR-16D24CC-BN/BZ 5000K	TYPE:LED	WEIGHT:
SPEC.:	DIM.:	SERIAL No.:
MFR.: ASD Lighting corp	SUR.:	PROTECTION ANGLE:

ρcc	80%			70%			50%			30%			10%			0
ρw	50%	30%	10%	50%	30%	10%	50%	30%	10%	50%	30%	10%	50%	30%	10%	0
ρfc	20%			20%			20%			20%			20%			0
RCR	RCR:Room Cavity Ratio						Wall Exitance Coefficients(WEC)									
0.0																
1.0	.363	.206	.065	.352	.201	.064	.333	.191	.061	.316	.182	.058	.300	.174	.056	
2.0	.322	.176	.054	.313	.172	.053	.296	.164	.051	.280	.157	.049	.265	.150	.047	
3.0	.290	.154	.046	.281	.151	.045	.266	.144	.044	.252	.138	.042	.239	.132	.041	
4.0	.263	.137	.040	.255	.134	.040	.242	.128	.038	.229	.123	.037	.217	.118	.036	
5.0	.240	.122	.035	.234	.120	.035	.221	.115	.034	.209	.110	.033	.198	.106	.032	
6.0	.221	.111	.032	.215	.109	.031	.204	.104	.030	.193	.100	.029	.183	.096	.029	
7.0	.204	.101	.029	.199	.099	.028	.189	.095	.027	.179	.092	.027	.170	.088	.026	
8.0	.190	.093	.026	.185	.091	.026	.176	.088	.025	.167	.084	.024	.158	.081	.024	
9.0	.177	.086	.024	.173	.084	.024	.164	.081	.023	.156	.078	.022	.148	.075	.022	
10.0	.166	.080	.022	.162	.078	.022	.154	.075	.021	.147	.073	.021	.140	.070	.020	

ρcc	80%			70%			50%			30%			10%			0
ρw	50%	30%	10%	50%	30%	10%	50%	30%	10%	50%	30%	10%	50%	30%	10%	0
ρfc	20%			20%			20%			20%			20%			0
RCR	RCR:Room Cavity Ratio						Ceiling Cavity Exitance Coefficients(CCEC)									
0.0	.265	.265	.265	.227	.227	.227	.155	.155	.155	.089	.089	.089	.028	.028	.028	
1.0	.259	.231	.206	.222	.198	.177	.152	.136	.122	.087	.079	.071	.028	.025	.023	
2.0	.252	.208	.170	.216	.179	.147	.148	.124	.103	.085	.072	.060	.027	.023	.020	
3.0	.245	.191	.148	.210	.165	.128	.144	.114	.090	.083	.067	.053	.027	.022	.017	
4.0	.237	.178	.133	.203	.154	.116	.140	.107	.081	.081	.063	.048	.026	.020	.016	
5.0	.229	.168	.123	.197	.145	.107	.136	.102	.075	.079	.060	.045	.025	.019	.015	
6.0	.222	.160	.115	.191	.138	.100	.132	.097	.071	.076	.057	.042	.025	.019	.014	
7.0	.215	.153	.110	.185	.133	.096	.128	.093	.068	.074	.055	.040	.024	.018	.013	
8.0	.208	.147	.106	.179	.128	.092	.124	.090	.065	.072	.053	.039	.023	.017	.013	
9.0	.202	.143	.103	.174	.124	.089	.121	.087	.064	.070	.051	.038	.023	.017	.013	
10.0	.196	.138	.100	.169	.120	.087	.117	.085	.062	.068	.050	.037	.022	.016	.012	

C Range: 0 - 360DEG
 C Interval: 15.0DEG
 Test Speed: HIGH
 Temperature:25.3DEG
 Operators:
 Test Date:2022-04-15

γ Range: 0 - 180DEG
 γ Interval: 1.0DEG
 Test System:EVERFINE GO-2000B_V1 SYSTEM V2.0.291
 Humidity:65.0%
 Test Distance:7.500m [K=1.0000]
 Remarks:

UGR(Unified Glare Rating) Table

Test:U:120.0V I:0.2139A P:23.97W PF:0.9343 Lamp Flux:1854.33x1 lm										
NAME: ASD-LFMDR-16D24CC-BN/BZ 5000K					TYPE:LED			WEIGHT:		
SPEC.:					DIM.:			SERIAL No.:		
MFR.: ASD Lighting corp					SUR.:			PROTECTION ANGLE:		
ceiling/cavity	0.7	0.7	0.5	0.5	0.3	0.7	0.7	0.5	0.5	0.3
walls	0.5	0.3	0.5	0.3	0.3	0.5	0.3	0.5	0.3	0.3
working plane	0.2	0.2	0.2	0.2	0.2	0.2	0.2	0.2	0.2	0.2
Room dimensions	Viewed crosswise					Viewed endwise				
x = 2H y = 2H	18.2	19.6	18.6	20.0	20.4	18.0	19.4	18.4	19.8	20.2
3H	20.1	21.4	20.5	21.8	22.3	19.8	21.2	20.3	21.6	22.0
4H	21.0	22.3	21.4	22.7	23.2	20.8	22.0	21.2	22.5	22.9
6H	21.9	23.1	22.4	23.6	24.1	21.7	22.9	22.2	23.4	23.8
8H	22.4	23.6	22.9	24.0	24.5	22.2	23.4	22.7	23.8	24.3
12H	22.9	24.0	23.4	24.5	25.0	22.7	23.8	23.2	24.3	24.8
4H 2H	18.8	20.1	19.3	20.5	21.0	18.7	20.0	19.1	20.4	20.9
3H	20.9	22.1	21.4	22.5	23.1	20.8	21.9	21.3	22.4	22.9
4H	22.0	23.1	22.6	23.6	24.1	21.8	22.9	22.4	23.4	23.9
6H	23.2	24.1	23.7	24.6	25.2	23.0	23.9	23.5	24.4	25.0
8H	23.8	24.6	24.3	25.2	25.8	23.5	24.4	24.1	24.9	25.5
12H	24.4	25.2	25.0	25.8	26.4	24.2	25.0	24.8	25.5	26.2
8H 4H	22.5	23.3	23.0	23.9	24.5	22.3	23.2	22.9	23.7	24.3
6H	23.9	24.6	24.4	25.2	25.8	23.7	24.4	24.3	25.0	25.6
8H	24.6	25.3	25.2	25.9	26.5	24.4	25.1	25.0	25.7	26.3
12H	25.5	26.1	26.1	26.7	27.4	25.3	25.8	25.9	26.5	27.1
12H 4H	22.5	23.3	23.1	23.9	24.5	22.4	23.2	22.9	23.7	24.3
6H	24.0	24.7	24.6	25.3	25.9	23.9	24.5	24.5	25.1	25.8
8H	24.9	25.5	25.5	26.1	26.8	24.7	25.3	25.3	25.9	26.6
Variations with the observer position at spacings:										
S = 1.0H	+ 0.1 / - 0.2					+ 0.1 / - 0.1				
1.5H	+ 0.2 / - 0.3					+ 0.2 / - 0.3				
2.0H	+ 0.2 / - 0.4					+ 0.2 / - 0.4				

CIE Pub.117 Corrected 1854 lm Total Lamp Luminous Flux.(8log(F/F0) = 2.1)

C Range: 0 - 360DEG
 C Interval: 15.0DEG
 Test Speed: HIGH
 Temperature:25.3DEG
 Operators:
 Test Date:2022-04-15

γ Range: 0 - 180DEG
 γ Interval: 1.0DEG
 Test System:EVERFINE GO-2000B_V1 SYSTEM V2.0.291
 Humidity:65.0%
 Test Distance:7.500m [K=1.0000]
 Remarks:

UTILIZATION FACTORS TABLE

Test:U:120.0V I:0.2139A P:23.97W PF:0.9343 Lamp Flux:1854.33x1 lm		
NAME: ASD-LFMDR-16D24CC-BN/BZ 5000K	TYPE:LED	WEIGHT:
SPEC.:	DIM.:	SERIAL No.:
MFR.: ASD Lighting corp	SUR.:	PROTECTION ANGLE:

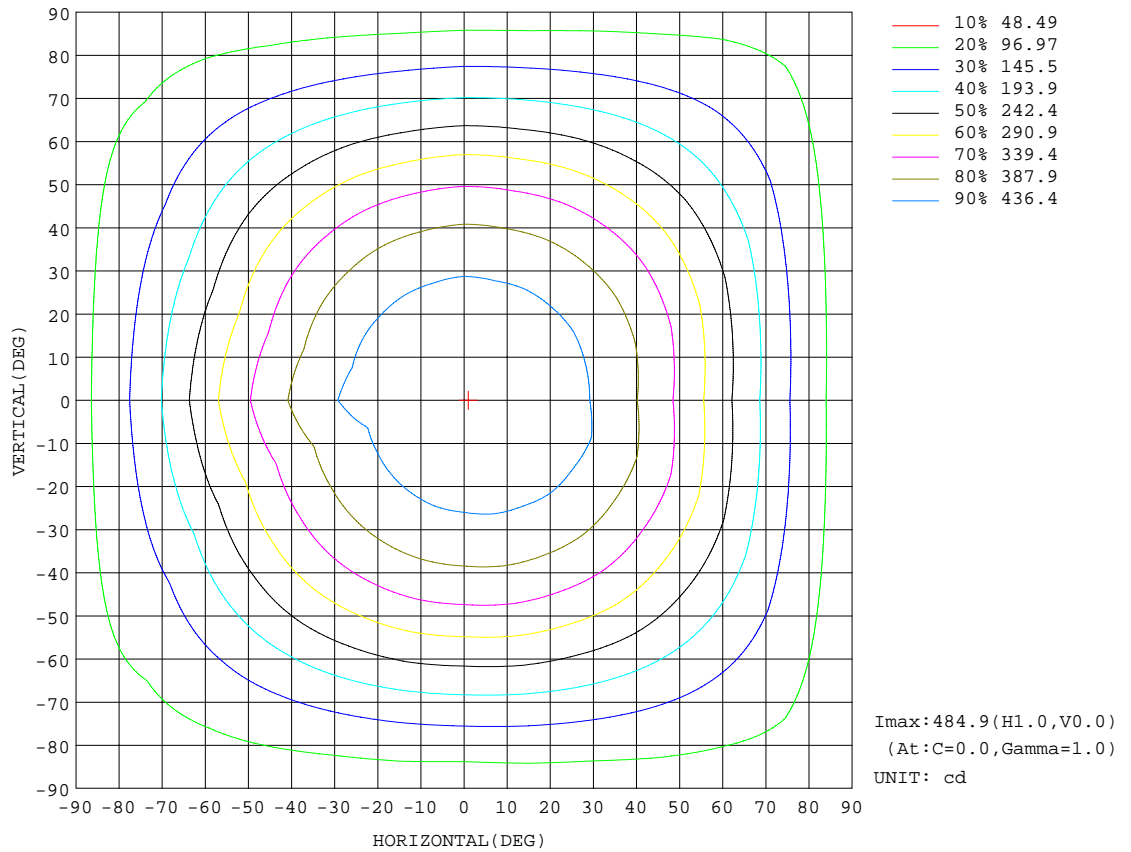
REFLECTANCE										
Ceiling	0.8	0.8	0.8	0.7	0.7	0.7	0.5	0.5	0.5	0
Walls	0.7	0.5	0.3	0.7	0.5	0.3	0.7	0.5	0.3	0
Working plane	0.2	0.2	0.2	0.2	0.2	0.2	0.2	0.2	0.2	0
ROOM INDEX	UTILIZATION FACTORS(PERCENT) $k(RI) \times RCR = 5$									
k = 0.60	51	39	32	50	39	32	49	38	31	25
0.80	61	48	40	60	48	40	57	47	40	32
1.00	69	57	49	67	56	48	64	57	47	39
1.25	76	64	56	74	63	55	70	61	54	45
1.50	81	70	62	79	68	61	75	66	59	50
2.00	88	78	70	86	76	69	81	73	67	57
2.50	93	83	76	90	81	75	85	77	72	61
3.00	96	88	81	93	86	79	88	81	76	65
4.00	101	93	88	97	91	86	91	86	82	70
5.00	103	97	92	100	94	90	94	89	85	73
ROOM INDEX	UF(total)									Direct
According to DIN EN 13032-2 2004			Suspended				SHRNOM = 1.25			

C Range: 0 - 360DEG
 C Interval: 15.0DEG
 Test Speed: HIGH
 Temperature:25.3DEG
 Operators:
 Test Date:2022-04-15

γ Range: 0 - 180DEG
 γ Interval: 1.0DEG
 Test System:EVERFINE GO-2000B_V1 SYSTEM V2.0.291
 Humidity:65.0%
 Test Distance:7.500m [K=1.0000]
 Remarks:

ISOCANDELA DIAGRAM

Test:U:120.0V I:0.2139A P:23.97W PF:0.9343 Lamp Flux:1854.33x1 lm		
NAME: ASD-LFMDR-16D24CC-BN/BZ 5000K	TYPE:LED	WEIGHT:
SPEC.:	DIM.:	SERIAL No.:
MFR.: ASD Lighting corp	SUR.:	PROTECTION ANGLE:

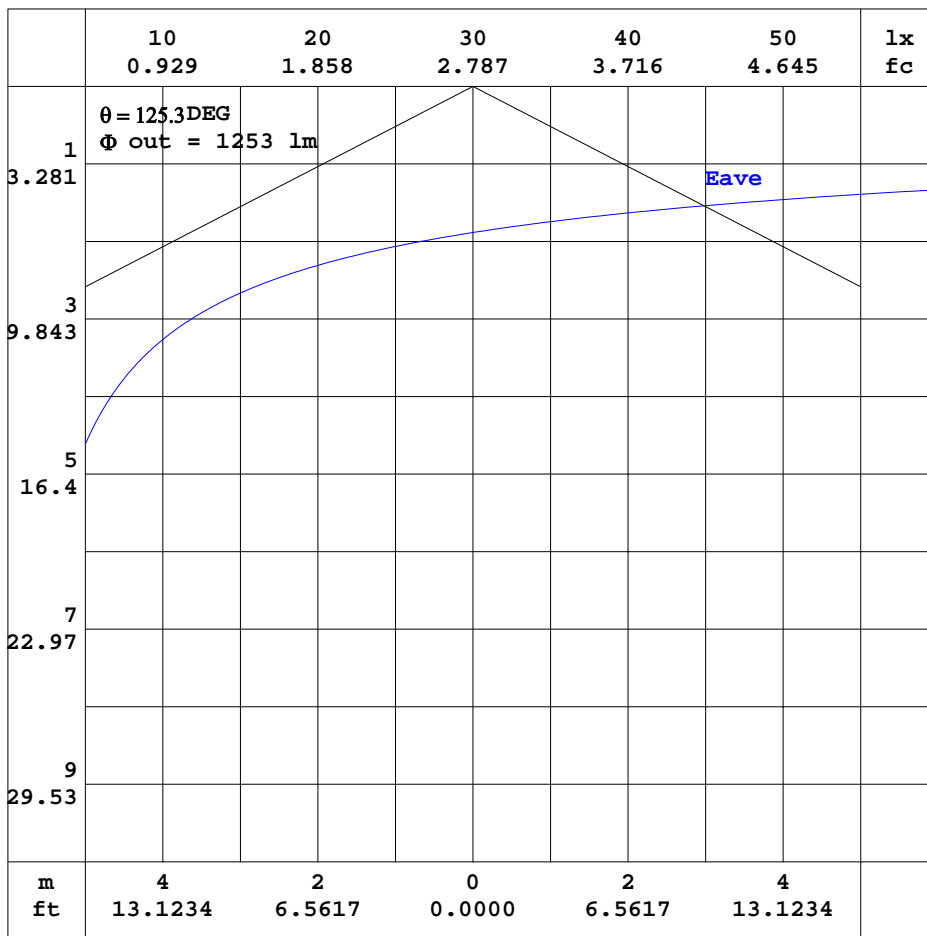


C Range: 0 - 360DEG
 C Interval: 15.0DEG
 Test Speed: HIGH
 Temperature: 25.3DEG
 Operators:
 Test Date: 2022-04-15

γ Range: 0 - 180DEG
 γ Interval: 1.0DEG
 Test System: EVERFINE GO-2000B_V1 SYSTEM V2.0.291
 Humidity: 65.0%
 Test Distance: 7.500m [K=1.0000]
 Remarks:

AAI CURVES

Test:U:120.0V I:0.2139A P:23.97W PF:0.9343 Lamp Flux:1854.33x1 lm		
NAME: ASD-LFMDR-16D24CC-BN/BZ 5000K	TYPE:LED	WEIGHT:
SPEC.:	DIM.:	SERIAL No.:
MFR.: ASD Lighting corp	SUR.:	PROTECTION ANGLE:



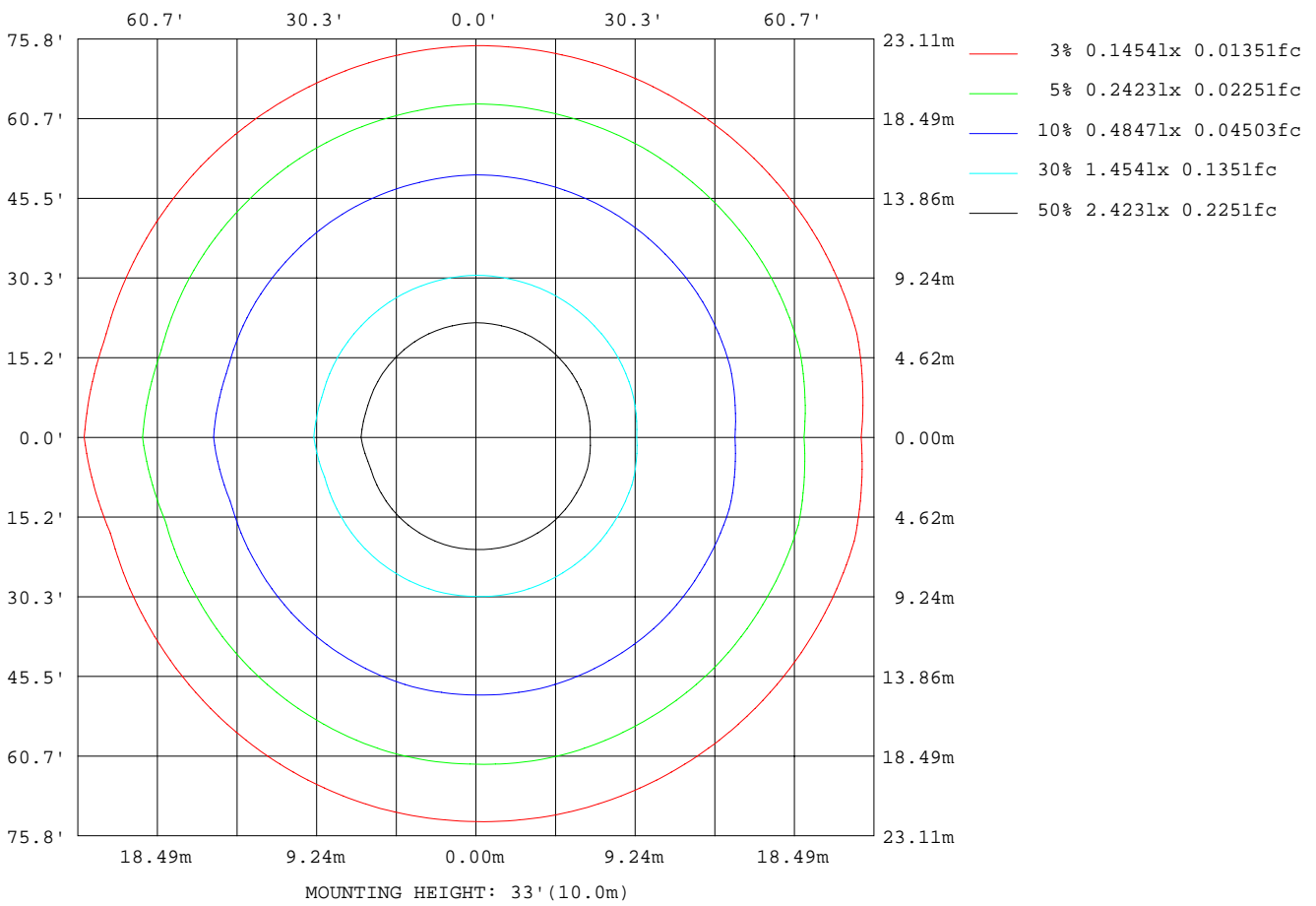
Note:The Curves indicate the illuminated area and the average illumination when the luminaire is at different distance.

C Range: 0 - 360DEG
 C Interval: 15.0DEG
 Test Speed: HIGH
 Temperature:25.3DEG
 Operators:
 Test Date:2022-04-15

γ Range: 0 - 180DEG
 γ Interval: 1.0DEG
 Test System:EVERFINE GO-2000B_V1 SYSTEM V2.0.291
 Humidity:65.0%
 Test Distance:7.500m [K=1.0000]
 Remarks:

ISOLUX DIAGRAM

Test:U:120.0V I:0.2139A P:23.97W PF:0.9343 Lamp Flux:1854.33x1 lm		
NAME: ASD-LFMDR-16D24CC-BN/BZ 5000K	TYPE:LED	WEIGHT:
SPEC.:	DIM.:	SERIAL No.:
MFR.: ASD Lighting corp	SUR.:	PROTECTION ANGLE:



C Range: 0 - 360DEG
 C Interval: 15.0DEG
 Test Speed: HIGH
 Temperature:25.3DEG
 Operators:
 Test Date:2022-04-15

γ Range: 0 - 180DEG
 γ Interval: 1.0DEG
 Test System:EVERFINE GO-2000B_V1 SYSTEM V2.0.291
 Humidity:65.0%
 Test Distance:7.500m [K=1.0000]
 Remarks:

LED Avg.L Report

Test:U:120.0V I:0.2139A P:23.97W PF:0.9343 Lamp Flux:1854.33x1 lm		
NAME: ASD-LFMDR-16D24CC-BN/BZ 5000K	TYPE:LED	WEIGHT:
SPEC.:	DIM.:	SERIAL No.:
MFR.: ASD Lighting corp	SUR.:	PROTECTION ANGLE:

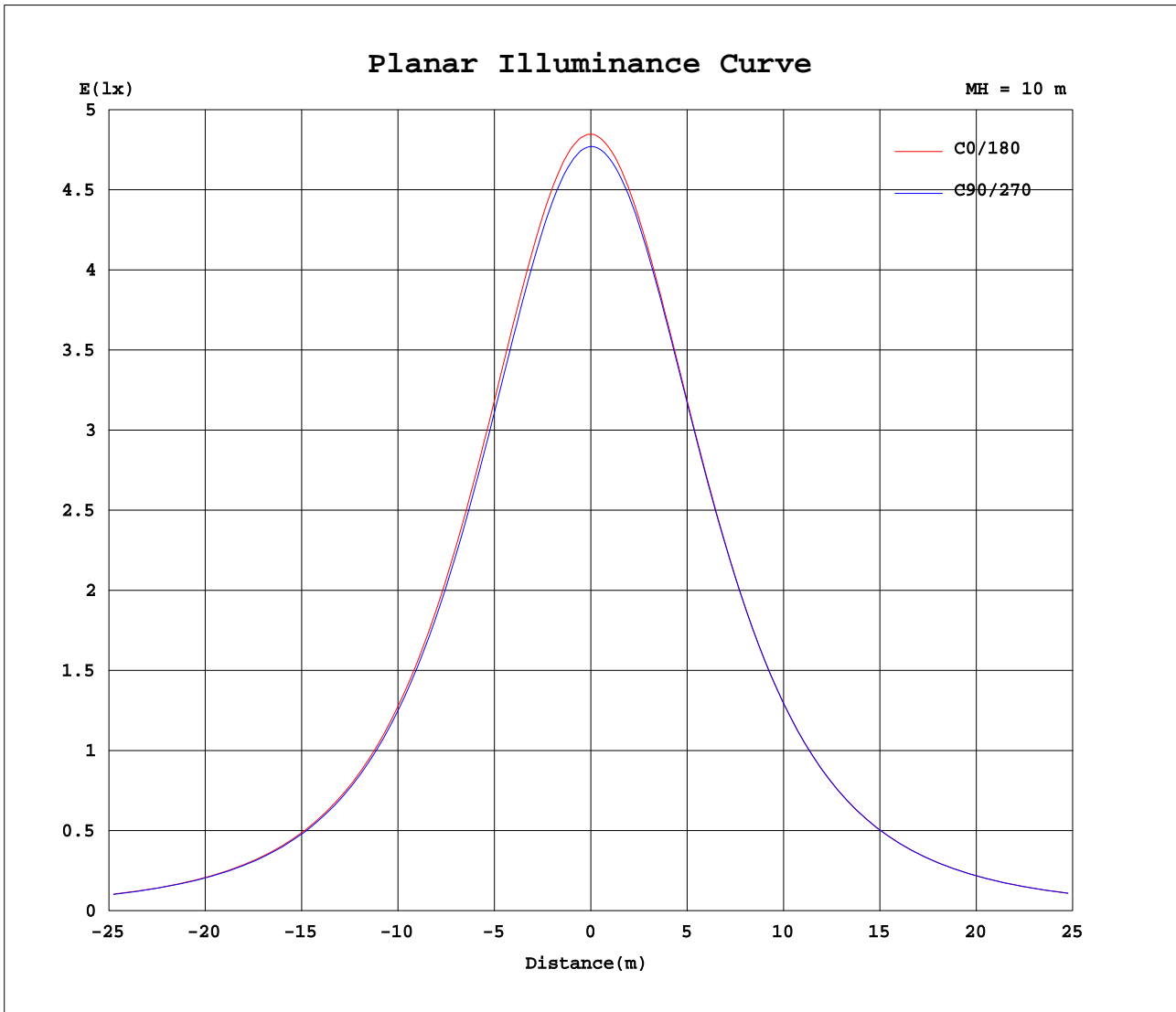
AvgL	cd/m2
L_0~180(65)av	5359
L_0~180(75)av	6001
L_0~180(85)av	11239
L_90~270(65)av	5322
L_90~270(75)av	5984
L_90~270(85)av	11020
L_45(65)av	5292
L_45(75)av	5916
L_45(85)av	11020

Standard: GB/T 29293-2012

C Range: 0 - 360DEG
 C Interval: 15.0DEG
 Test Speed: HIGH
 Temperature:25.3DEG
 Operators:
 Test Date:2022-04-15

γ Range: 0 - 180DEG
 γ Interval: 1.0DEG
 Test System:EVERFINE GO-2000B_V1 SYSTEM V2.0.291
 Humidity:65.0%
 Test Distance:7.500m [K=1.0000]
 Remarks:

Planar Illuminance Curve



C Range: 0 - 360DEG
 C Interval: 15.0DEG
 Test Speed: HIGH
 Temperature: 25.3DEG
 Operators:
 Test Date: 2022-04-15

γ Range: 0 - 180DEG
 γ Interval: 1.0DEG
 Test System: EVERFINE GO-2000B_V1 SYSTEM V2.0.291
 Humidity: 65.0%
 Test Distance: 7.500m [K=1.0000]
 Remarks:

LUMINOUS DISTRIBUTION INTENSITY DATA

Test:U:120.0V I:0.2139A P:23.97W PF:0.9343 Lamp Flux:1854.33x1 lm		
NAME: ASD-LFMDR-16D24CC-BN/BZ 5000K	TYPE:LED	WEIGHT:
SPEC.:	DIM.:	SERIAL No.:
MFR.: ASD Lighting corp	SUR.:	PROTECTION ANGLE:

Table--1

UNIT: cd

C(DEG) γ (DEG)	0	15	30	45	60	75	90	105	120	135	150	165	180	195	210	225	240	255	270
0	485	483	481	481	479	478	477	476	476	474	474	473	485	483	481	481	479	478	477
5	484	483	481	480	478	476	475	473	473	472	471	470	483	480	479	479	478	477	476
10	480	480	478	477	474	472	471	469	468	466	466	464	479	475	475	474	474	473	473
15	473	475	472	471	468	466	463	462	460	458	457	456	472	467	467	467	467	467	468
20	463	466	463	461	458	456	453	451	449	447	446	445	462	456	457	457	458	458	459
25	450	454	451	449	445	443	439	438	435	433	431	431	450	442	443	444	445	446	447
30	433	439	435	433	429	427	423	421	419	416	414	414	434	425	427	427	429	430	432
35	413	420	416	414	410	408	403	402	399	396	394	393	415	405	407	408	410	411	414
40	389	397	393	391	387	385	380	379	375	373	370	370	392	381	383	384	387	389	392
45	361	371	367	365	361	358	354	352	348	346	343	342	366	354	356	357	360	362	366
50	330	341	336	335	331	328	323	322	318	315	312	312	337	323	326	327	331	333	337
55	295	308	303	301	297	295	290	289	284	282	278	279	304	290	293	294	298	300	304
60	258	272	267	265	261	260	254	253	249	246	243	243	270	254	257	258	262	265	269
65	221	234	230	228	225	221	218	216	213	209	207	206	232	218	219	222	224	228	232
70	183	196	192	190	188	185	182	180	177	174	172	172	195	182	183	185	188	191	195
75	149	160	157	155	153	152	149	147	144	141	140	140	162	149	151	151	154	157	161
80	118	128	126	124	122	121	118	118	115	113	111	112	131	120	121	121	123	126	130
85	92.0	101	97.8	96.8	94.4	93.9	91.1	91.7	89.5	88.6	87.4	88.5	104	94.0	95.1	94.7	96.7	98.2	101
90	69.5	76.6	74.2	73.3	71.5	70.8	68.7	69.5	68.1	67.9	67.1	68.0	80.8	72.2	73.1	72.7	74.0	74.8	77.2
95	51.4	56.7	54.8	54.2	52.8	52.7	51.1	52.1	51.2	51.3	50.7	51.5	61.4	54.8	55.3	54.9	55.8	56.0	58.2
100	38.8	42.2	41.0	40.8	39.5	38.4	37.7	38.0	38.7	39.8	39.6	40.4	46.7	42.4	42.9	42.3	41.6	40.1	41.7
105	32.8	33.8	33.4	33.4	32.2	29.8	28.5	29.9	31.7	33.8	34.2	34.9	37.9	36.6	36.3	35.2	33.2	31.3	30.5
110	31.6	31.7	31.7	31.7	29.8	28.2	27.3	28.2	29.7	31.8	32.7	33.2	35.2	34.8	34.4	32.8	30.6	29.0	28.4
115	29.7	30.0	30.1	29.8	27.9	26.7	25.8	26.2	27.5	29.4	30.6	31.2	33.0	32.6	32.4	30.5	28.6	27.1	26.7
120	27.6	28.1	28.2	27.8	26.1	25.0	24.0	24.1	25.3	27.1	28.4	29.0	30.6	30.1	30.1	28.2	26.5	25.0	24.8
125	25.2	25.8	25.9	25.4	24.1	23.0	22.1	22.0	23.0	24.5	25.8	26.2	28.0	27.3	27.3	25.6	24.2	22.8	22.8
130	22.7	23.3	23.2	22.9	21.8	20.8	20.0	19.9	20.4	21.6	23.0	23.2	25.1	24.4	24.3	22.8	21.6	20.6	20.8
135	20.1	20.7	20.5	20.2	19.2	18.5	17.8	17.6	17.8	18.8	20.1	20.1	22.3	21.3	21.3	19.9	18.8	18.1	18.6
140	17.4	18.0	17.7	17.4	16.7	16.5	15.5	15.2	15.0	15.9	16.8	17.2	19.8	18.4	18.2	17.0	16.1	15.7	16.3
145	14.7	15.3	14.9	14.7	14.2	13.8	13.4	12.9	12.6	13.2	13.8	14.5	17.0	15.5	14.7	13.8	13.4	13.2	14.0
150	12.0	12.7	12.4	12.2	11.8	11.6	11.3	10.9	10.7	11.0	11.3	11.9	14.1	12.7	11.9	10.9	11.0	11.0	11.7
155	10.1	10.6	10.3	10.2	9.92	9.72	9.45	9.24	9.08	9.25	9.54	9.78	11.6	10.2	9.96	9.51	9.15	9.33	9.84
160	8.82	9.23	8.98	8.91	8.70	8.53	8.36	8.24	8.17	8.06	8.13	8.30	9.48	8.70	8.56	8.29	8.06	8.16	8.60
165	7.98	8.26	8.09	8.02	7.85	7.82	7.74	7.66	7.62	7.58	7.49	7.45	8.07	7.70	7.68	7.63	7.68	7.54	7.83
170	7.47	7.64	7.56	7.51	7.41	7.42	7.38	7.31	7.21	7.24	7.23	7.23	7.44	7.34	7.39	7.39	7.36	7.24	7.26
175	7.18	7.30	7.26	7.25	7.15	7.11	7.04	7.00	7.05	7.08	7.05	7.18	7.39	7.23	7.21	7.13	7.11	7.10	7.02
180	7.10	7.07	7.02	7.01	6.95	6.93	6.89	6.90	6.87	6.87	6.87	6.89	7.13	7.05	7.04	7.00	6.97	6.92	6.90

C Range: 0 - 360DEG
 C Interval: 15.0DEG
 Test Speed: HIGH
 Temperature:25.3DEG
 Operators:
 Test Date:2022-04-15

γ Range: 0 - 180DEG
 γ Interval: 1.0DEG
 Test System:EVERFINE GO-2000B_V1 SYSTEM V2.0.291
 Humidity:65.0%
 Test Distance:7.500m [K=1.0000]
 Remarks:

LUMINOUS DISTRIBUTION INTENSITY DATA

Test:U:120.0V I:0.2139A P:23.97W PF:0.9343 Lamp Flux:1854.33x1 lm		
NAME: ASD-LFMDR-16D24CC-BN/BZ 5000K	TYPE:LED	WEIGHT:
SPEC.:	DIM.:	SERIAL No.:
MFR.: ASD Lighting corp	SUR.:	PROTECTION ANGLE:

Table--2

UNIT: cd

C(DEG) γ (DEG)	285	300	315	330	345														
0	476	476	474	474	473														
5	476	475	475	475	474														
10	473	473	473	473	472														
15	467	468	468	468	467														
20	459	460	460	460	459														
25	447	448	449	450	449														
30	432	434	434	435	434														
35	414	415	416	417	417														
40	392	394	395	396	395														
45	366	368	369	371	370														
50	337	339	340	342	341														
55	304	307	308	310	309														
60	269	272	273	275	274														
65	232	235	236	239	238														
70	196	197	199	201	201														
75	161	163	164	166	166														
80	130	131	133	135	134														
85	101	103	104	106	105														
90	77.6	79.4	80.3	82.2	81.4														
95	58.5	59.9	60.5	61.8	61.1														
100	42.4	45.0	45.4	46.6	45.8														
105	32.2	34.9	36.0	36.7	36.3														
110	29.7	31.7	33.1	33.5	33.2														
115	27.9	29.9	31.3	31.9	31.6														
120	26.1	27.9	29.2	29.9	29.6														
125	24.0	25.7	26.9	27.8	27.3														
130	21.7	23.4	24.5	25.0	24.7														
135	19.3	20.7	21.8	22.2	21.9														
140	16.9	18.0	18.7	19.3	19.2														
145	14.4	15.3	15.8	16.3	16.3														
150	12.1	12.8	13.1	13.5	13.5														
155	10.1	10.6	10.8	11.0	11.1														
160	8.77	9.10	9.16	9.37	9.43														
165	7.95	8.06	8.25	8.09	8.29														
170	7.34	7.54	7.63	7.74	7.64														
175	7.08	7.18	7.24	7.30	7.26														
180	6.87	6.87	6.87	6.89	6.89														

C Range: 0 - 360DEG
 C Interval: 15.0DEG
 Test Speed: HIGH
 Temperature:25.3DEG
 Operators:
 Test Date:2022-04-15

γ Range: 0 - 180DEG
 γ Interval: 1.0DEG
 Test System:EVERFINE GO-2000B_V1 SYSTEM V2.0.291
 Humidity:65.0%
 Test Distance:7.500m [K=1.0000]
 Remarks: