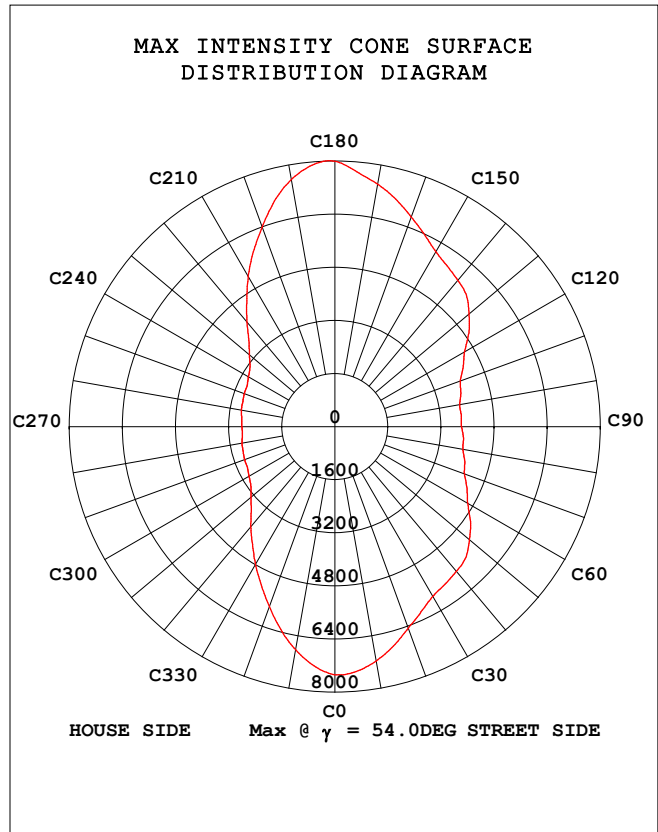
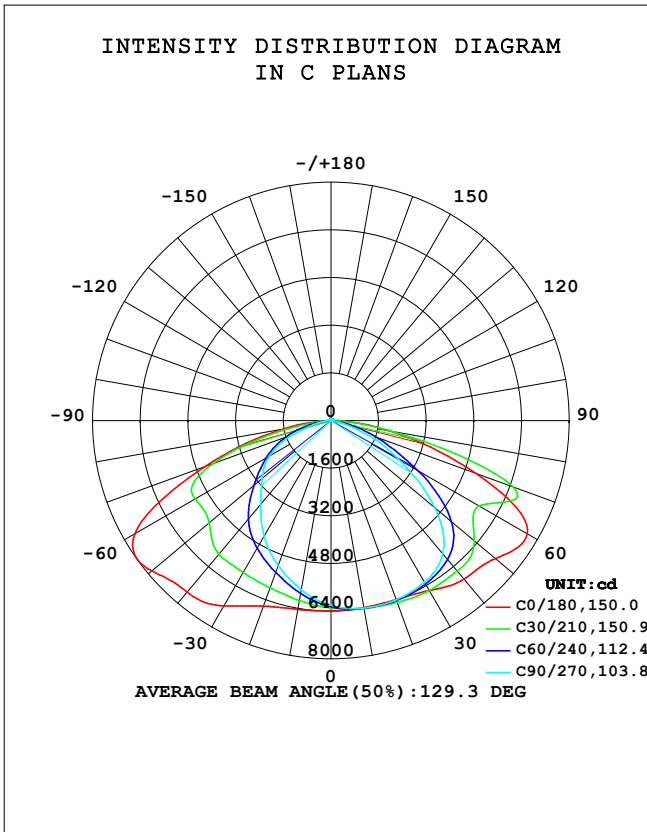


STREETLIGHT PHOTOMETRIC TEST REPORT

Test:U:118.76V I:1.2838A P:145.64W PF:0.9552 Freq:49.98Hz Lamp Flux:24141.4x1 lm		
NAME: ASD-LSB5B-PRO-150BR	TYPE:	WEIGHT:
SPEC.: 150W 5000K	DIM.:	SERIAL No.:
MFR.: ASD LIGHTING CORP	SUR.:	Shielding Angle:

DATA OF LAMP		PHOTOMETRIC DATA Eff: 165.76 lm/W			
MODEL	ASD-LSB5B-PRO-150BR	I _{max} (cd)	7999	η street_up (%)	0.4
NOMINAL POWER (W)	150	LOR (%)	100.0	η street_down (%)	53.5
RATED VOLTAGE (V)	120	TOTAL FLUX (lm)	24141	η house_up (%)	0.6
NOMINAL FLUX (lm)	24141.4	MAXIMUM @ (C, γ)	180,54.0	η house_down (%)	45.5
LAMPS INSIDE	1	η up (%)	1.0	76 FLASHAREA (m2)	
TEST VOLTAGE (V)	120	η down (%)	99.0	SLI	

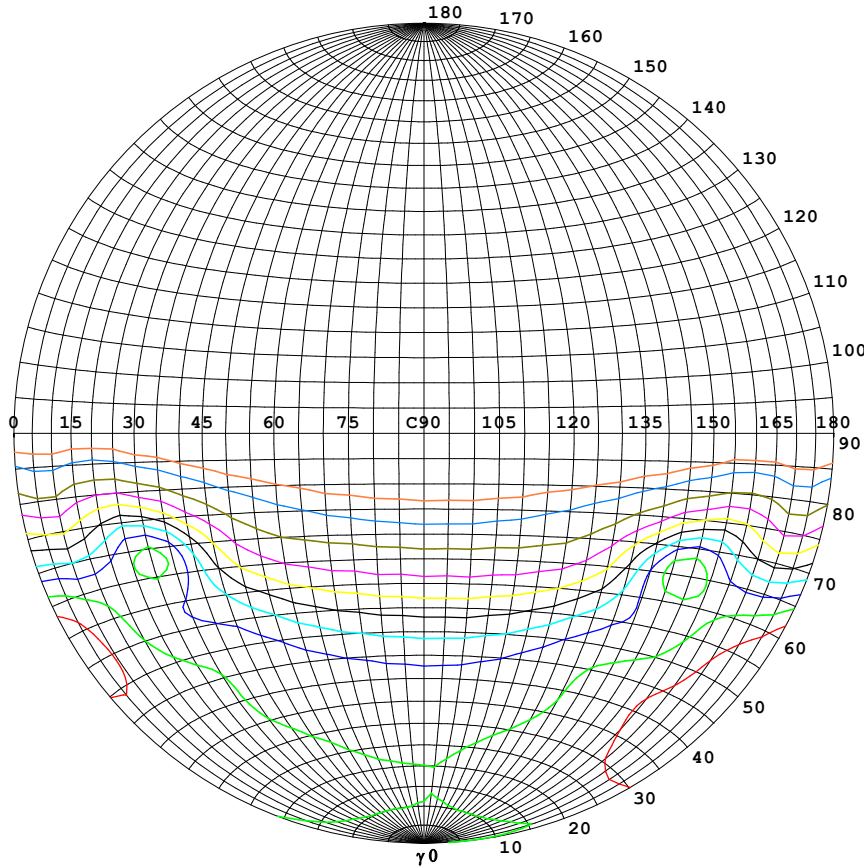


C Range: 0 - 360DEG
 C Interval: 5.0DEG
 Test Speed: HIGH
 Temperature: 25.3DEG
 Operators: S
 Test Date: 2024-5-30

γ Range: 0 - 180DEG
 γ Interval: 1.0DEG
 Test System: EVERFINE GO-2000B_V1 SYSTEM V2.00.446
 Humidity: 65.0%
 Test Distance: 7.850m [K=1.0000]
 Remarks:

STREETLIGHT ISOCANDELA DIAGRAM

Test:U:118.76V I:1.2838A P:145.64W PF:0.9552 Freq:49.98Hz Lamp Flux:24141.4x1 lm		
NAME: ASD-LSB5B-PRO-150BR	TYPE:	WEIGHT:
SPEC.: 150W 5000K	DIM.:	SERIAL No.:
MFR.: ASD LIGHTING CORP	SUR.:	Shielding Angle:



Classification:

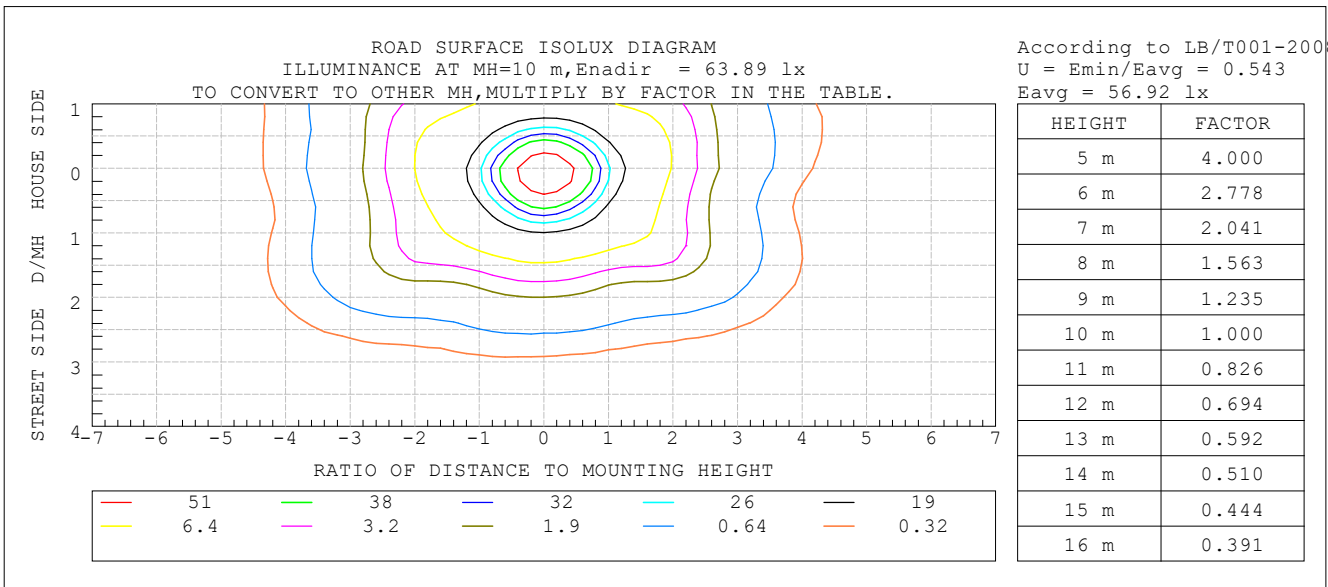
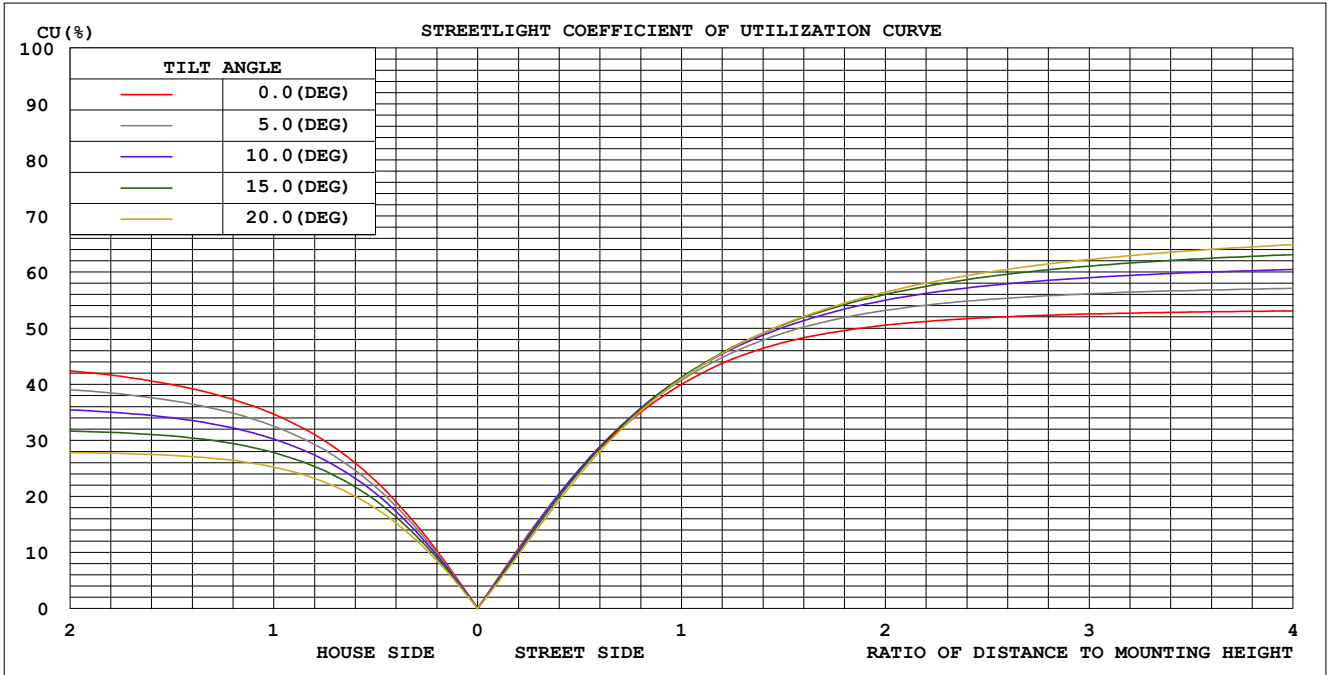
IES:Type III - Short
 CIE:Narrow - Short
 IES:Semi cut-off
 CIE:Non-cut-off
 Max.At80:101.2cd/klm
 Max.At90:8.700cd/klm
 Max.80-90:101.2cd/klm
 NRB 5101:Semi limited[15.6%]

ISOCANDELA DIAGRAM	
UNIT	cd
Imax=100%	7999
90%	7199
80%	6399
70%	5599
60%	4800
50%	4000
40%	3200
30%	2400
20%	1600
10%	800
5%	400

C Range: 0 - 360DEG
 C Interval: 5.0DEG
 Test Speed: HIGH
 Temperature:25.3DEG
 Operators:S
 Test Date:2024-5-30

γ Range: 0 - 180DEG
 γ Interval: 1.0DEG
 Test System:EVERFINE GO-2000B_V1 SYSTEM V2.00.446
 Humidity:65.0%
 Test Distance:7.850m [K=1.0000]
 Remarks:

COEFFICIENT OF UTILIZATION CURVE
AND ISOLUX DIAGRAM



C Range: 0 - 360DEG
C Interval: 5.0DEG
Test Speed: HIGH
Temperature: 25.3DEG
Operators: S
Test Date: 2024-5-30

γ Range: 0 - 180DEG
 γ Interval: 1.0DEG
Test System: EVERFINE GO-2000B_V1 SYSTEM V2.00.446
Humidity: 65.0%
Test Distance: 7.850m [K=1.0000]
Remarks:

ZONAL FLUX DIAGRAM

Test:U:118.76V I:1.2838A P:145.64W PF:0.9552 Freq:49.98Hz Lamp Flux:24141.4x1 lm		
NAME: ASD-LSB5B-PRO-150BR	TYPE:	WEIGHT:
SPEC.: 150W 5000K	DIM.:	SERIAL No.:
MFR.: ASD LIGHTING CORP	SUR.:	Shielding Angle:

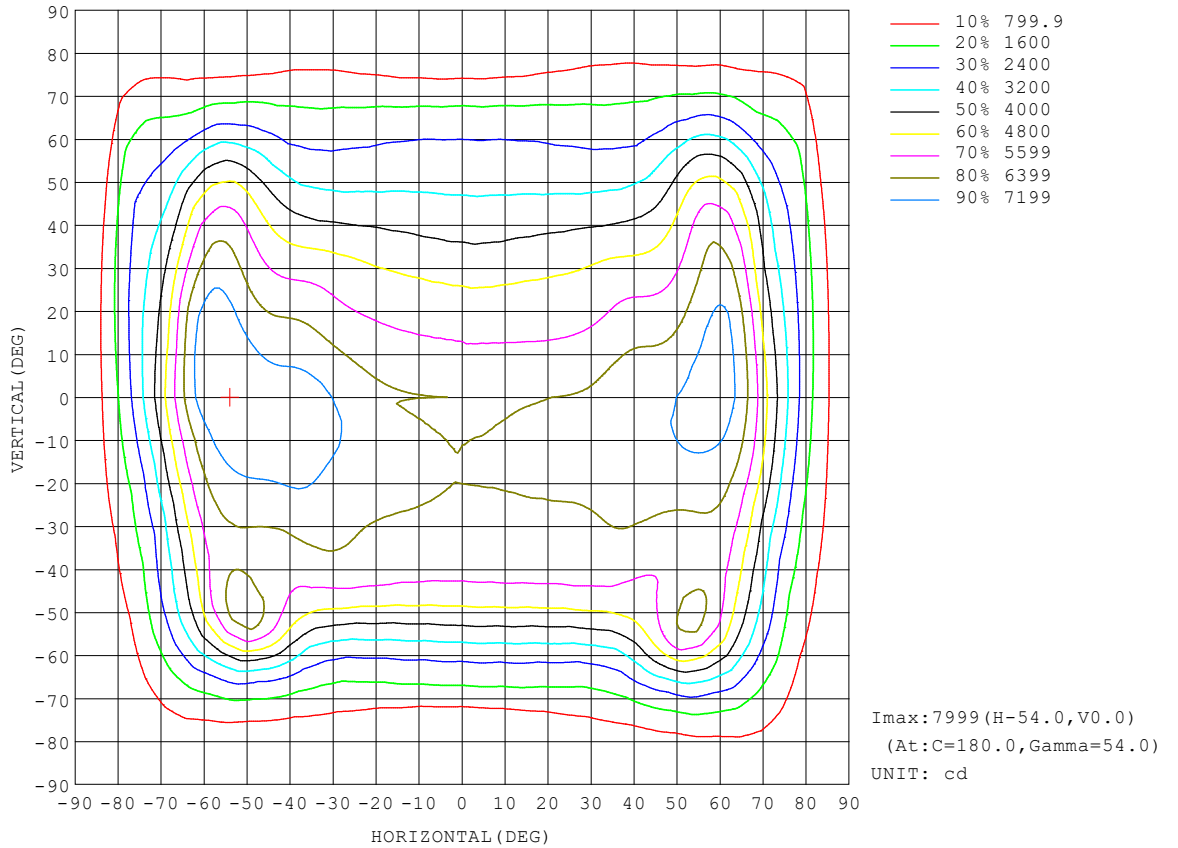
γ	C0	C45	C90	C135	C180	C225	C270	C315	γ	Φ zone	Φ total	%lum, lamp
10	6374	6399	6390	6398	6434	5995	5766	5889	0- 10	592.5	592.5	2.45,2.45
20	6393	6465	6400	6603	6629	5664	5183	5509	10- 20	1737	2330	9.65,9.65
30	6591	6437	6267	6611	7183	5344	4494	5120	20- 30	2796	5125	21.2,21.2
40	6944	6245	5838	6508	7515	4983	3683	4720	30- 40	3711	8837	36.6,36.6
50	7209	5934	4547	6043	7850	4097	3026	3964	40- 50	4299	13136	54.4,54.4
60	7607	4818	2631	4906	7611	3063	2396	2986	50- 60	4353	17489	72.4,72.4
70	5160	3148	1081	3011	4477	2074	1263	2084	60- 70	3843	21332	88.4,88.4
80	1968	956.3	189.9	694.5	1579	712.2	424.1	923.8	70- 80	2113	23445	97.1,97.1
90	65.01	9.916	5.216	10.37	24.37	27.05	10.54	27.94	80- 90	457.6	23903	99,99
100	29.89	16.10	10.03	17.56	37.97	26.86	14.69	25.33	90-100	20.66	23924	99.1,99.1
110	43.07	25.01	16.40	26.04	49.76	36.87	24.52	35.55	100-110	28.48	23952	99.2,99.2
120	51.65	33.44	23.54	33.50	56.18	45.83	35.77	45.42	110-120	36.03	23988	99.4,99.4
130	54.19	40.17	30.35	37.60	57.45	50.55	45.64	53.59	120-130	39.11	24027	99.5,99.5
140	53.26	44.21	36.16	39.93	56.45	52.86	51.91	57.18	130-140	36.94	24064	99.7,99.7
150	53.73	47.78	41.76	43.14	57.11	54.78	54.58	58.28	140-150	31.51	24096	99.8,99.8
160	56.47	52.11	47.19	47.40	58.94	56.25	56.46	59.09	150-160	24.32	24120	99.9,99.9
170	60.38	56.34	52.66	52.80	61.62	57.77	57.43	58.75	160-170	15.72	24136	100,100
180	62.93	58.58	56.72	57.54	63.13	58.52	56.78	57.54	170-180	5.506	24141	100,100
DEG	LUMINOUS INTENSITY:cd									UNIT:lm		

C Range: 0 - 360DEG
 C Interval: 5.0DEG
 Test Speed: HIGH
 Temperature:25.3DEG
 Operators:S
 Test Date:2024-5-30

γ Range: 0 - 180DEG
 γ Interval: 1.0DEG
 Test System:EVERFINE GO-2000B_V1 SYSTEM V2.00.446
 Humidity:65.0%
 Test Distance:7.850m [K=1.0000]
 Remarks:

ISOCANDELA DIAGRAM

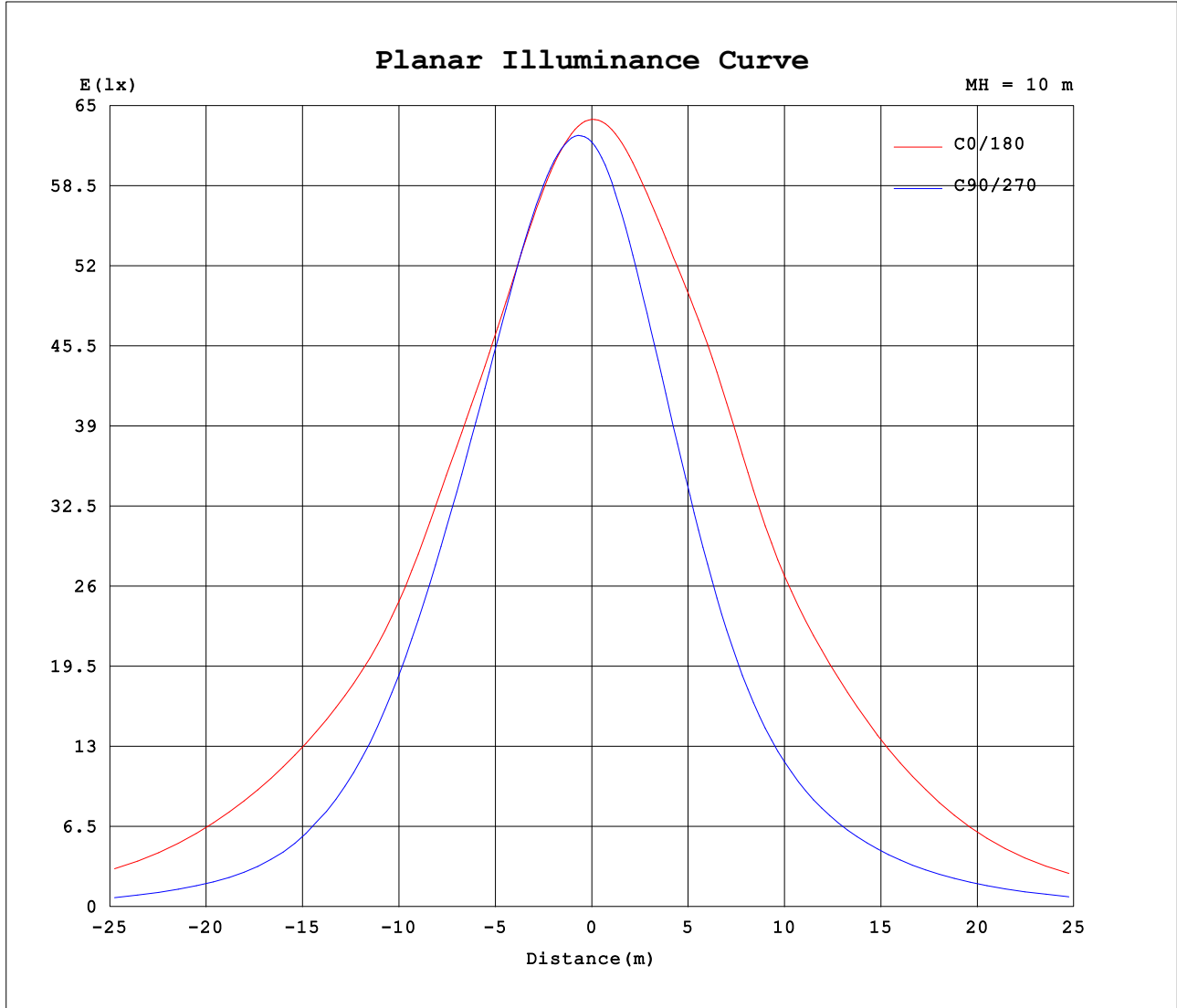
Test:U:118.76V I:1.2838A P:145.64W PF:0.9552 Freq:49.98Hz Lamp Flux:24141.4x1 lm		
NAME: ASD-LSB5B-PRO-150BR	TYPE:	WEIGHT:
SPEC.: 150W 5000K	DIM.:	SERIAL No.:
MFR.: ASD LIGHTING CORP	SUR.:	Shielding Angle:



C Range: 0 - 360DEG
C Interval: 5.0DEG
Test Speed: HIGH
Temperature: 25.3DEG
Operators: S
Test Date: 2024-5-30

γ Range: 0 - 180DEG
γ Interval: 1.0DEG
Test System: EVERFINE GO-2000B_V1 SYSTEM V2.00.446
Humidity: 65.0%
Test Distance: 7.850m [K=1.0000]
Remarks:

Planar Illuminance Curve



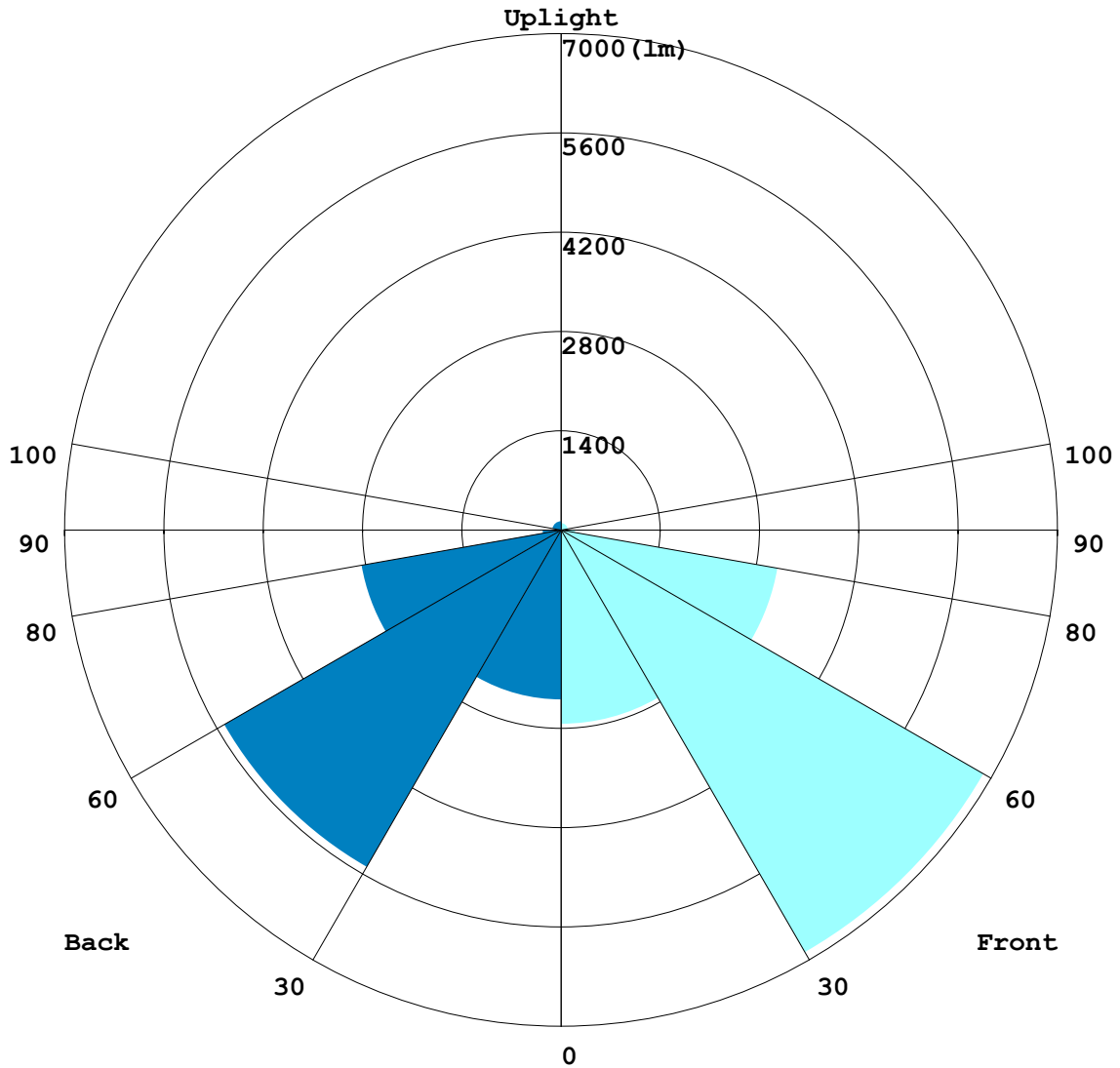
C Range: 0 - 360DEG
 C Interval: 5.0DEG
 Test Speed: HIGH
 Temperature: 25.3DEG
 Operators: S
 Test Date: 2024-5-30

γ Range: 0 - 180DEG
 γ Interval: 1.0DEG
 Test System: EVERFINE GO-2000B_V1 SYSTEM V2.00.446
 Humidity: 65.0%
 Test Distance: 7.850m [K=1.0000]
 Remarks:

LCS REPORT

Test:U:118.76V I:1.2838A P:145.64W PF:0.9552 Freq:49.98Hz		
Lamp Flux:24141.4x1 lm		
NAME: ASD-LSB5B-PRO-150BR	TYPE:	WEIGHT:
SPEC.: 150W 5000K	DIM.:	SERIAL No.:
MFR.: ASD LIGHTING CORP	SUR.:	Shielding Angle:

LUMINAIRE CLASSIFICATION SYSTEM(LCS) GRAPH



C Range: 0 - 360DEG
 C Interval: 5.0DEG
 Test Speed: HIGH
 Temperature:25.3DEG
 Operators:S
 Test Date:2024-5-30

γ Range: 0 - 180DEG
 γ Interval: 1.0DEG
 Test System:EVERFINE GO-2000B_V1 SYSTEM V2.00.446
 Humidity:65.0%
 Test Distance:7.850m [K=1.0000]
 Remarks:

BUG REPORT

Test:U:118.76V I:1.2838A P:145.64W PF:0.9552 Freq:49.98Hz Lamp Flux:24141.4x1 lm		
NAME: ASD-LSB5B-PRO-150BR	TYPE:	WEIGHT:
SPEC.: 150W 5000K	DIM.:	SERIAL No.:
MFR.: ASD LIGHTING CORP	SUR.:	Shielding Angle:

IESNA Luminaire Flux Distribution Table:

Zone	Lumens	Luminaire %
FL - Front-Low(0-30)	2733.2	11.3
FM - Front-Medium(30-60)	6878.9	28.5
FH - Front-High(60-80)	3099	12.8
FVH - Front-Very High(80-90)	196.55	0.8
Total Forward Light	13011	53.9

BL - Back-Low(0-30)	2392.2	9.9
BM - Back-Medium(30-60)	5484.6	22.7
BH - Back-High(60-80)	2857.6	11.8
BVH - Back-Very High(80-90)	261.09	1.1
Total Back Light	11130	46.1

UL - Uplight-Low(90-100)	20.66	0.1
UH - Uplight-High(100-180)	217.61	0.9
Total Up Light	238.27	1.0

BUG(Back,Up,Glare) Rating	B4-U3-G4
----------------------------------	-----------------

Zone	Downward Lumens	Upward Lumens	Total Lumens
House Side	10995	134.58	11130
Street Side	12908	103.69	13011

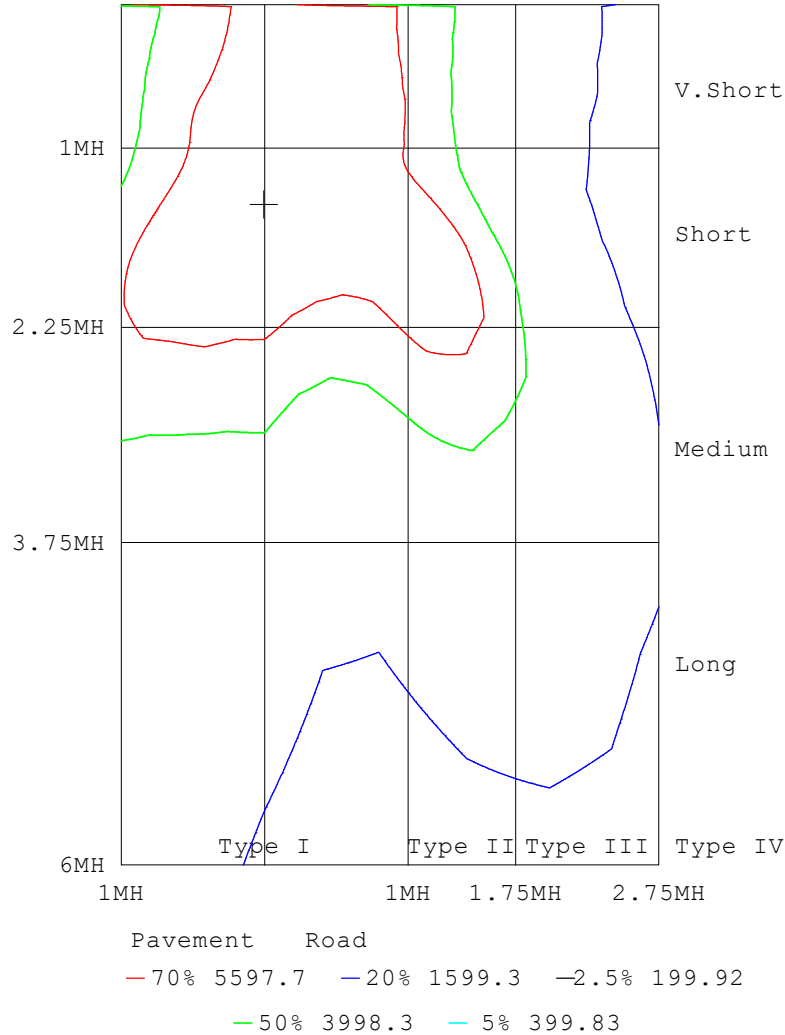
C Range: 0 - 360DEG
 C Interval: 5.0DEG
 Test Speed: HIGH
 Temperature:25.3DEG
 Operators:S
 Test Date:2024-5-30

γ Range: 0 - 180DEG
 γ Interval: 1.0DEG
 Test System:EVERFINE GO-2000B_V1 SYSTEM V2.00.446
 Humidity:65.0%
 Test Distance:7.850m [K=1.0000]
 Remarks:

ROAD ISOCANDELA REPORT

Test:U:118.76V I:1.2838A P:145.64W PF:0.9552 Freq:49.98Hz		
Lamp Flux:24141.4x1 lm		
NAME: ASD-LSB5B-PRO-150BR	TYPE:	WEIGHT:
SPEC.: 150W 5000K	DIM.:	SERIAL No.:
MFR.: ASD LIGHTING CORP	SUR.:	Shielding Angle:

ROAD SURFACE ISOCANDELA DIAGRAM



C Range: 0 - 360DEG
 C Interval: 5.0DEG
 Test Speed: HIGH
 Temperature:25.3DEG
 Operators:S
 Test Date:2024-5-30

γ Range: 0 - 180DEG
 γ Interval: 1.0DEG
 Test System:EVERFINE GO-2000B_V1 SYSTEM V2.00.446
 Humidity:65.0%
 Test Distance:7.850m [K=1.0000]
 Remarks:

LUMINOUS DISTRIBUTION INTENSITY DATA

Test:U:118.76V I:1.2838A P:145.64W PF:0.9552 Freq:49.98Hz Lamp Flux:24141.4x1 lm		
NAME: ASD-LSB5B-PRO-150BR	TYPE:	WEIGHT:
SPEC.: 150W 5000K	DIM.:	SERIAL No.:
MFR.: ASD LIGHTING CORP	SUR.:	Shielding Angle:

Table--1

UNIT: cd

C (DEG) γ (DEG)	0	5	10	15	20	25	30	35	40	45	50	55	60	65	70	75	80	85	90
0	6389	6363	6343	6327	6313	6301	6294	6283	6277	6266	6262	6252	6248	6238	6238	6227	6225	6211	6206
5	6379	6366	6357	6352	6350	6347	6348	6347	6348	6346	6347	6344	6345	6343	6344	6339	6339	6329	6325
10	6374	6373	6376	6380	6384	6387	6391	6395	6398	6399	6400	6399	6399	6399	6401	6400	6399	6393	6390
15	6375	6389	6404	6417	6426	6434	6438	6440	6439	6436	6432	6429	6425	6423	6423	6422	6419	6417	6414
20	6393	6425	6455	6475	6490	6494	6494	6488	6477	6465	6452	6440	6427	6419	6413	6410	6405	6402	6400
25	6454	6507	6550	6571	6580	6569	6553	6530	6501	6473	6445	6424	6402	6389	6375	6369	6359	6356	6350
30	6591	6658	6707	6707	6691	6642	6588	6535	6479	6437	6393	6367	6340	6328	6311	6303	6287	6281	6267
35	6796	6864	6890	6857	6791	6693	6587	6492	6405	6348	6295	6268	6240	6227	6204	6189	6160	6149	6123
40	6944	7012	7031	6984	6888	6746	6594	6450	6327	6245	6177	6137	6085	6051	5994	5960	5895	5877	5838
45	7010	7094	7101	7032	6901	6746	6568	6414	6267	6153	6038	5941	5810	5714	5587	5515	5405	5381	5323
50	7209	7247	7152	6955	6701	6479	6274	6156	6032	5934	5745	5547	5283	5098	4885	4780	4647	4615	4547
55	7537	7431	7154	6800	6408	6083	5825	5713	5608	5468	5150	4813	4431	4200	3968	3865	3736	3706	3635
60	7607	7324	6922	6548	6180	5910	5743	5589	5300	4818	4229	3796	3384	3146	2937	2849	2723	2694	2631
65	6846	6563	6222	6068	6065	6272	6460	6119	5131	4028	3155	2688	2361	2226	2100	2054	1965	1941	1889
70	5160	5031	4789	4950	5389	6160	6504	5873	4398	3148	2286	1863	1604	1501	1367	1286	1154	1107	1081
75	3469	3221	3074	3524	4078	4570	4338	3684	2654	2016	1472	1170	955	821	692	633	567	551	520
80	1968	1696	1682	2138	2371	2409	2063	1749	1271	956	690	548	419	351	278	258	218	217	190
85	869	694	678	873	953	864	649	526	336	247	141	104	76.2	49.3	30.2	23.4	16.1	13.0	9.29
90	65.0	46.2	69.1	47.3	85.4	29.5	16.8	14.9	12.4	9.92	8.09	6.86	6.30	5.83	5.59	5.33	5.28	5.12	5.22
95	23.2	22.4	22.0	20.9	20.1	18.7	17.4	15.5	13.9	12.1	10.8	9.50	8.74	8.08	7.77	7.48	7.41	7.29	7.38
100	29.9	28.8	28.0	26.6	25.5	23.8	22.3	20.1	18.2	16.1	14.5	12.9	11.9	11.0	10.6	10.2	10.1	9.93	10.0
105	36.7	35.4	34.2	32.5	31.1	29.2	27.3	25.0	22.8	20.5	18.7	16.7	15.5	14.3	13.8	13.3	13.2	13.0	13.1
110	43.1	41.5	40.0	38.0	36.2	34.1	32.1	29.7	27.5	25.0	23.0	20.9	19.4	18.0	17.3	16.6	16.5	16.3	16.4
115	48.1	46.5	44.8	42.8	41.0	38.9	36.9	34.4	32.0	29.4	27.3	25.0	23.3	21.8	21.0	20.2	20.1	19.8	19.9
120	51.6	50.2	48.6	46.9	45.2	43.1	41.0	38.4	36.1	33.4	31.2	29.0	27.3	25.6	24.7	23.9	23.9	23.5	23.5
125	53.7	52.5	51.2	49.7	48.1	46.2	44.1	41.8	39.5	37.1	34.9	32.7	30.9	29.3	28.4	27.7	27.5	27.1	27.1
130	54.2	53.2	52.2	51.2	49.9	48.3	46.6	44.6	42.5	40.2	38.0	35.8	34.1	32.7	31.8	31.2	30.9	30.5	30.4
135	53.9	53.3	52.7	52.1	51.1	49.9	48.4	46.6	44.6	42.5	40.4	38.4	36.9	35.7	35.0	34.3	33.9	33.5	33.4
140	53.3	53.2	53.1	52.9	52.1	51.0	49.6	47.9	46.1	44.2	42.5	40.8	39.6	38.6	37.9	37.2	36.7	36.3	36.2
145	53.3	53.6	53.7	53.4	52.7	51.7	50.3	48.9	47.5	46.0	44.6	43.2	42.3	41.4	40.7	40.0	39.5	39.1	39.0
150	53.7	54.1	54.1	53.8	53.1	52.3	51.3	50.1	49.0	47.8	46.8	45.8	45.0	44.1	43.5	42.8	42.4	41.9	41.8
155	54.7	55.0	54.9	54.5	54.0	53.3	52.6	51.8	50.8	49.8	49.1	48.2	47.5	46.7	46.2	45.5	45.0	44.6	44.3
160	56.5	56.7	56.5	56.1	55.7	55.3	54.6	53.7	52.9	52.1	51.5	50.7	50.2	49.5	49.0	48.3	47.9	47.4	47.2
165	58.5	58.7	58.4	58.2	57.7	57.1	56.5	55.8	55.0	54.4	53.9	53.3	52.8	52.3	51.9	51.3	50.9	50.6	50.3
170	60.4	60.5	60.1	59.8	59.3	58.7	58.1	57.5	56.9	56.3	55.9	55.4	54.8	54.4	54.0	53.6	53.2	52.9	52.7
175	62.4	62.3	61.6	61.1	60.3	59.7	59.1	58.6	58.2	57.6	57.1	56.8	56.4	56.1	55.8	55.4	55.1	55.0	54.8
180	62.9	62.6	61.7	61.1	60.5	60.2	59.8	59.5	59.0	58.6	58.1	57.9	57.7	57.5	57.3	57.1	56.8	56.9	56.7

C Range: 0 - 360DEG
 C Interval: 5.0DEG
 Test Speed: HIGH
 Temperature:25.3DEG
 Operators:S
 Test Date:2024-5-30

γ Range: 0 - 180DEG
 γ Interval: 1.0DEG
 Test System:EVERFINE GO-2000B_V1 SYSTEM V2.00.446
 Humidity:65.0%
 Test Distance:7.850m [K=1.0000]
 Remarks:

LUMINOUS DISTRIBUTION INTENSITY DATA

Test:U:118.76V I:1.2838A P:145.64W PF:0.9552 Freq:49.98Hz Lamp Flux:24141.4x1 lm		
NAME: ASD-LSB5B-PRO-150BR	TYPE:	WEIGHT:
SPEC.: 150W 5000K	DIM.:	SERIAL No.:
MFR.: ASD LIGHTING CORP	SUR.:	Shielding Angle:

Table--2

UNIT: cd

C (DEG) γ (DEG)	95	100	105	110	115	120	125	130	135	140	145	150	155	160	165	170	175	180	185
0	6178	6182	6178	6184	6181	6188	6184	6188	6187	6193	6193	6198	6197	6202	6200	6204	6202	6389	6363
5	6302	6304	6302	6307	6304	6308	6303	6304	6298	6297	6290	6287	6278	6272	6259	6250	6236	6405	6367
10	6374	6379	6383	6392	6395	6401	6399	6402	6398	6398	6390	6384	6368	6357	6336	6315	6287	6434	6380
15	6406	6416	6427	6443	6457	6473	6483	6497	6505	6514	6513	6515	6499	6488	6459	6431	6386	6496	6424
20	6398	6411	6430	6453	6481	6510	6540	6573	6603	6636	6659	6686	6688	6692	6665	6639	6578	6629	6539
25	6352	6364	6387	6414	6450	6488	6536	6587	6649	6715	6782	6852	6903	6951	6957	6954	6889	6866	6749
30	6271	6279	6302	6327	6364	6403	6460	6523	6611	6706	6820	6943	7059	7174	7244	7292	7257	7183	7042
35	6130	6137	6171	6198	6248	6293	6358	6433	6539	6666	6824	7003	7171	7330	7434	7493	7483	7439	7293
40	5850	5866	5933	5995	6091	6175	6276	6380	6508	6667	6856	7057	7244	7400	7507	7553	7524	7515	7352
45	5349	5370	5478	5576	5757	5914	6109	6264	6423	6557	6724	6882	7086	7274	7462	7586	7604	7598	7390
50	4564	4575	4700	4802	5058	5292	5623	5853	6043	6117	6251	6407	6689	6988	7317	7587	7751	7850	7652
55	3640	3633	3739	3814	4057	4302	4721	5102	5491	5706	5867	6050	6334	6660	7024	7345	7649	7996	7941
60	2640	2634	2722	2775	2961	3171	3610	4120	4906	5682	6132	6284	6264	6304	6481	6698	7013	7611	7718
65	1897	1887	1944	1967	2070	2192	2541	3087	4175	5612	6758	6874	6302	5709	5466	5458	5697	6253	6378
70	1067	1080	1169	1222	1346	1449	1716	2163	3011	4078	5323	5785	5429	4586	3993	3741	3950	4477	4431
75	533	531	579	619	725	828	1026	1266	1686	2122	2806	3215	3484	3261	2763	2225	2349	2941	3212
80	206	197	223	236	289	327	415	507	694	877	1173	1375	1625	1669	1501	1142	1173	1579	2069
85	13.3	16.2	22.1	26.4	34.3	38.1	51.0	75.2	105	141	253	314	486	502	463	347	352	530	815
90	5.18	5.49	5.68	6.26	6.35	7.09	7.79	9.05	10.4	11.9	13.6	15.0	16.1	18.0	18.3	20.0	19.0	24.4	26.7
95	7.37	7.63	7.88	8.44	8.68	9.57	10.6	12.2	13.7	15.6	17.3	19.2	20.6	22.4	23.1	23.9	24.2	31.2	31.6
100	9.99	10.3	10.6	11.2	11.6	12.7	13.9	15.8	17.6	19.8	21.8	23.9	25.6	27.6	28.6	29.6	30.2	38.0	38.5
105	13.0	13.3	13.6	14.4	14.9	16.3	17.7	19.8	21.8	24.2	26.4	28.7	30.5	32.6	34.0	35.5	36.3	44.5	45.0
110	16.3	16.7	17.0	17.9	18.5	20.0	21.6	23.9	26.0	28.6	30.9	33.2	35.0	37.4	38.9	40.4	41.6	49.8	50.3
115	19.8	20.2	20.5	21.4	22.1	23.8	25.5	27.8	30.0	32.6	35.0	37.3	39.2	41.6	43.1	44.6	45.9	53.6	54.3
120	23.4	23.9	24.1	24.9	25.7	27.3	29.1	31.4	33.5	35.8	38.1	40.3	42.4	44.8	46.4	47.9	49.2	56.2	56.9
125	27.0	27.3	27.6	28.3	28.9	30.4	32.0	34.0	36.1	38.2	40.2	42.2	44.2	46.6	48.1	49.7	51.0	57.4	58.0
130	30.2	30.5	30.8	31.4	31.9	33.0	34.2	36.0	37.6	39.4	41.4	43.2	45.0	47.4	48.7	49.9	51.1	57.4	57.9
135	33.2	33.4	33.7	34.3	34.6	35.4	36.3	37.5	38.7	40.1	41.6	43.3	45.1	47.1	48.3	49.5	50.6	56.9	57.0
140	36.0	36.1	36.3	36.9	37.1	37.7	38.3	39.1	39.9	40.9	42.1	43.4	45.0	46.6	47.7	48.8	49.8	56.5	56.2
145	38.8	38.8	38.8	39.2	39.4	39.9	40.2	40.9	41.4	42.2	43.3	44.3	45.2	46.5	47.6	49.1	49.7	56.6	56.0
150	41.5	41.4	41.3	41.5	41.5	41.9	42.2	42.7	43.1	43.8	44.6	45.4	46.4	47.2	48.1	48.9	49.6	57.1	56.4
155	44.0	43.8	43.6	43.7	43.6	43.9	44.2	44.6	45.0	45.6	46.1	46.8	47.4	48.4	49.0	49.9	50.7	57.9	57.2
160	46.8	46.7	46.4	46.5	46.4	46.7	46.8	47.2	47.4	47.9	48.3	49.0	49.5	50.3	50.9	51.6	52.6	58.9	58.3
165	50.0	49.9	49.7	49.7	49.6	49.8	49.8	50.1	50.2	50.7	51.0	51.6	52.0	52.5	53.1	53.7	54.7	60.1	59.4
170	52.4	52.4	52.2	52.3	52.1	52.3	52.3	52.6	52.8	53.2	53.6	54.0	54.3	54.8	55.3	55.9	56.9	61.6	60.7
175	54.7	54.7	54.7	54.8	54.6	54.7	54.8	55.1	55.2	55.5	56.0	56.4	56.8	57.7	58.0	59.6	59.7	63.0	62.1
180	56.8	56.8	56.9	57.1	57.0	57.1	57.2	57.4	57.5	57.7	58.2	58.5	58.9	59.6	59.9	61.3	61.3	63.1	62.5

C Range: 0 - 360DEG
 C Interval: 5.0DEG
 Test Speed: HIGH
 Temperature:25.3DEG
 Operators:S
 Test Date:2024-5-30

γ Range: 0 - 180DEG
 γ Interval: 1.0DEG
 Test System:EVERFINE GO-2000B_V1 SYSTEM V2.00.446
 Humidity:65.0%
 Test Distance:7.850m [K=1.0000]
 Remarks:

LUMINOUS DISTRIBUTION INTENSITY DATA

Test:U:118.76V I:1.2838A P:145.64W PF:0.9552 Freq:49.98Hz Lamp Flux:24141.4x1 lm		
NAME: ASD-LSB5B-PRO-150BR	TYPE:	WEIGHT:
SPEC.: 150W 5000K	DIM.:	SERIAL No.:
MFR.: ASD LIGHTING CORP	SUR.:	Shielding Angle:

Table--3

UNIT: cd

C (DEG) γ (DEG)	190	195	200	205	210	215	220	225	230	235	240	245	250	255	260	265	270	275	280
0	6343	6327	6313	6301	6294	6283	6277	6266	6262	6252	6248	6238	6238	6227	6225	6211	6206	6178	6182
5	6332	6301	6272	6243	6221	6194	6175	6150	6133	6108	6096	6074	6066	6047	6041	6021	6019	5985	5995
10	6328	6275	6227	6177	6133	6083	6044	5995	5963	5917	5890	5853	5835	5804	5795	5769	5766	5733	5747
15	6347	6271	6193	6117	6043	5967	5900	5829	5771	5708	5662	5605	5580	5536	5517	5486	5480	5450	5468
20	6428	6319	6201	6085	5974	5863	5764	5664	5580	5495	5430	5358	5313	5256	5226	5189	5183	5151	5173
25	6595	6437	6261	6093	5931	5774	5636	5506	5397	5287	5201	5108	5043	4967	4921	4871	4861	4827	4858
30	6831	6605	6356	6118	5893	5685	5507	5344	5205	5067	4955	4834	4745	4644	4580	4512	4494	4460	4502
35	7061	6785	6469	6162	5875	5612	5386	5177	5000	4820	4673	4513	4397	4270	4190	4109	4089	4057	4107
40	7133	6851	6528	6183	5859	5546	5261	4983	4744	4508	4322	4128	4002	3865	3784	3704	3683	3658	3710
45	7087	6737	6376	5994	5656	5298	4974	4620	4340	4057	3869	3680	3575	3462	3404	3339	3328	3309	3353
50	7254	6780	6273	5794	5348	4896	4503	4097	3801	3529	3373	3236	3179	3115	3085	3036	3026	3015	3055
55	7633	7121	6470	5851	5220	4580	4037	3561	3268	3032	2930	2848	2844	2814	2809	2758	2748	2739	2790
60	7658	7292	6752	6076	5269	4384	3616	3063	2782	2584	2520	2452	2461	2434	2435	2394	2396	2378	2430
65	6603	6445	6304	5872	5140	4083	3193	2592	2315	2147	2086	2012	1998	1949	1949	1913	1931	1904	1955
70	4602	4746	5003	4771	4208	3298	2584	2074	1840	1680	1617	1518	1461	1352	1313	1246	1263	1245	1331
75	3287	3199	3241	3033	2698	2126	1751	1449	1317	1187	1090	965	878	775	744	705	720	708	761
80	2444	2203	1816	1447	1219	975	816	712	706	640	595	497	464	427	423	409	424	416	441
85	1206	1000	675	431	362	270	241	199	215	193	206	184	190	175	181	172	186	184	210
90	29.4	31.6	32.6	32.4	32.3	31.0	30.2	27.1	25.2	22.2	19.0	15.7	13.3	11.6	10.3	9.23	10.5	10.8	17.3
95	31.2	30.8	29.7	28.7	27.1	25.7	24.0	22.4	20.3	18.4	16.2	14.6	13.1	12.2	11.5	11.3	11.0	11.0	11.0
100	38.0	37.2	35.5	34.0	32.0	30.4	28.5	26.9	24.8	22.9	20.6	18.9	17.2	16.3	15.4	15.1	14.7	14.7	14.8
105	44.5	43.5	41.6	39.7	37.4	35.5	33.5	31.9	29.9	28.1	25.9	24.2	22.3	21.2	20.1	19.7	19.3	19.3	19.4
110	49.9	48.9	47.0	44.9	42.3	40.3	38.3	36.9	35.1	33.4	31.3	29.6	27.8	26.6	25.4	25.0	24.5	24.6	24.7
115	54.1	53.3	51.5	49.6	47.2	45.2	43.2	41.7	39.9	38.4	36.5	35.0	33.2	32.0	31.0	30.6	30.1	30.2	30.3
120	56.9	56.3	55.0	53.3	51.3	49.4	47.4	45.8	44.2	42.8	41.1	39.8	38.2	37.4	36.5	36.2	35.8	35.9	36.0
125	58.3	57.9	56.9	55.6	53.8	52.1	50.4	48.9	47.5	46.2	44.8	43.8	42.8	42.3	41.7	41.4	41.0	41.1	41.3
130	58.3	58.2	57.7	56.5	55.0	53.4	51.9	50.5	49.4	48.4	47.6	47.2	46.7	46.6	46.0	45.9	45.6	45.8	46.0
135	57.4	57.4	57.2	56.4	55.3	53.9	52.7	51.6	50.7	50.3	49.9	49.9	49.9	49.8	49.5	49.4	49.3	49.4	49.6
140	56.2	56.1	56.0	55.6	55.1	54.3	53.6	52.9	52.3	52.0	51.9	52.0	52.0	51.9	51.8	51.9	51.9	52.1	52.3
145	55.7	55.4	55.2	55.0	54.9	54.6	54.3	54.0	53.7	53.5	53.4	53.3	53.3	53.3	53.4	53.5	53.6	53.8	54.1
150	56.1	55.7	55.5	55.3	55.2	55.0	55.0	54.8	54.7	54.7	54.4	54.3	54.2	54.2	54.4	54.4	54.6	54.8	55.1
155	56.9	56.6	56.4	56.2	56.0	55.9	55.8	55.7	55.6	55.4	55.3	55.2	55.2	55.3	55.4	55.4	55.5	55.6	55.9
160	57.9	57.5	57.4	57.1	56.9	56.6	56.5	56.2	56.2	56.0	56.0	56.0	56.1	56.3	56.3	56.3	56.5	56.5	56.7
165	58.9	58.5	58.3	57.9	57.7	57.4	57.1	56.9	56.8	56.6	56.6	56.6	56.8	56.8	56.9	56.9	57.1	57.1	57.3
170	60.1	59.6	59.3	59.0	58.7	58.3	58.0	57.8	57.5	57.3	57.3	57.2	57.3	57.2	57.3	57.3	57.4	57.5	57.6
175	61.4	60.6	60.2	59.8	59.5	59.0	58.7	58.4	58.0	57.8	57.7	57.6	57.5	57.3	57.3	57.2	57.3	57.3	57.4
180	61.8	61.0	60.6	60.2	59.9	59.4	59.1	58.5	58.1	57.9	57.7	57.5	57.3	57.0	56.9	56.8	56.8	56.8	56.8

C Range: 0 - 360DEG
 C Interval: 5.0DEG
 Test Speed: HIGH
 Temperature:25.3DEG
 Operators:S
 Test Date:2024-5-30

γ Range: 0 - 180DEG
 γ Interval: 1.0DEG
 Test System:EVERFINE GO-2000B_V1 SYSTEM V2.00.446
 Humidity:65.0%
 Test Distance:7.850m [K=1.0000]
 Remarks:

LUMINOUS DISTRIBUTION INTENSITY DATA

Test:U:118.76V I:1.2838A P:145.64W PF:0.9552 Freq:49.98Hz Lamp Flux:24141.4x1 lm		
NAME: ASD-LSB5B-PRO-150BR	TYPE:	WEIGHT:
SPEC.: 150W 5000K	DIM.:	SERIAL No.:
MFR.: ASD LIGHTING CORP	SUR.:	Shielding Angle:

Table--4

UNIT: cd

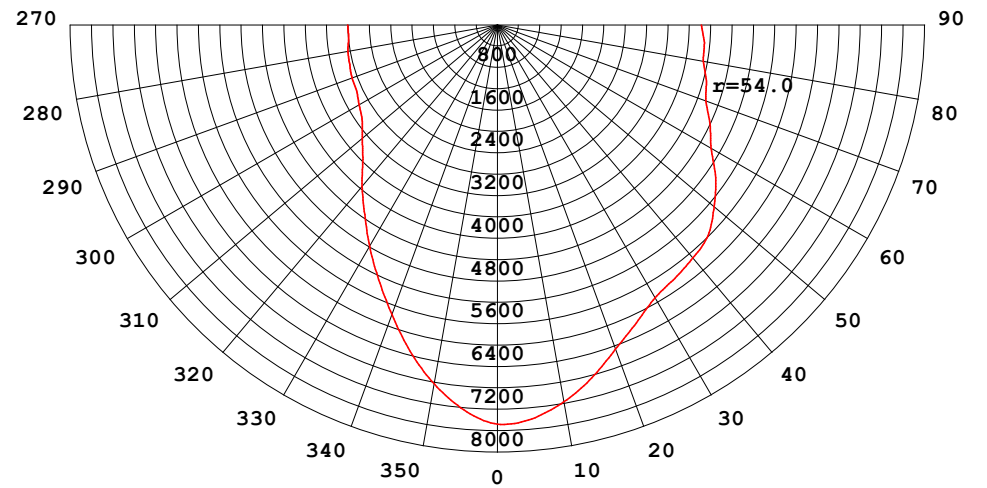
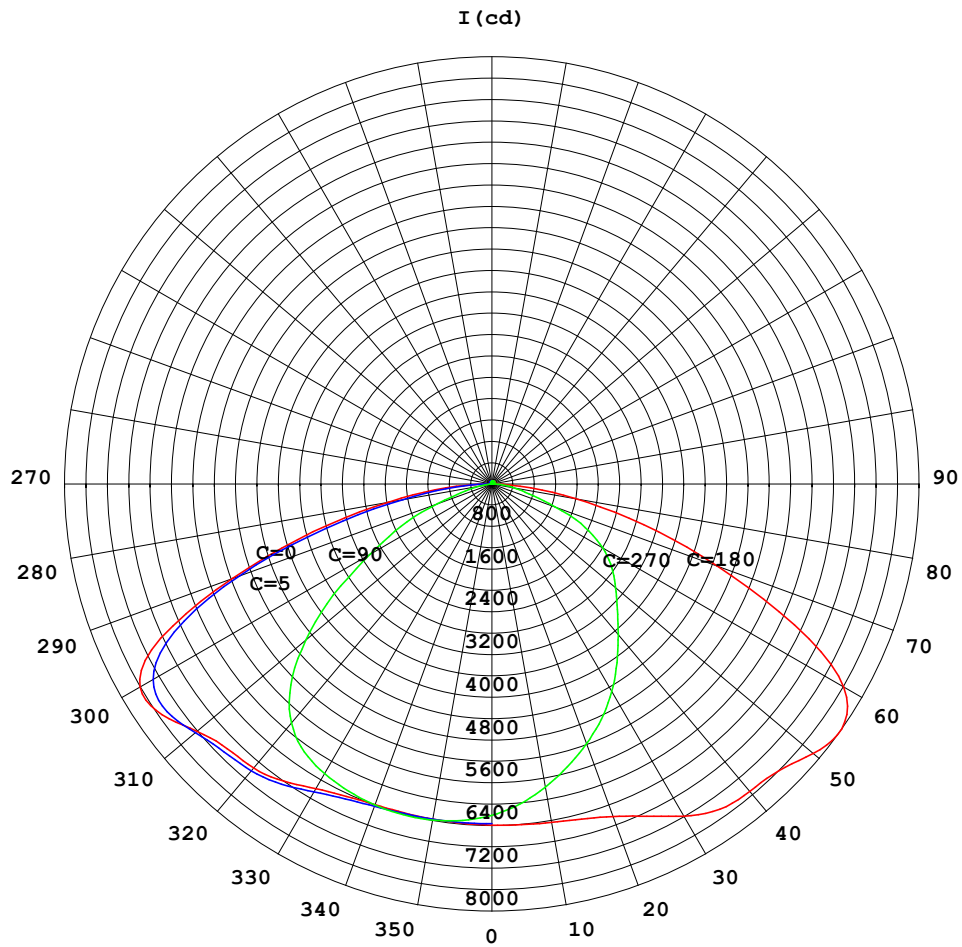
C (DEG) γ (DEG)	285	290	295	300	305	310	315	320	325	330	335	340	345	350	355				
0	6178	6184	6181	6188	6184	6188	6187	6193	6193	6198	6197	6202	6200	6204	6202				
5	5992	6005	6008	6024	6028	6046	6054	6073	6086	6106	6118	6137	6150	6167	6178				
10	5748	5772	5784	5813	5830	5866	5889	5929	5960	5999	6030	6069	6100	6135	6163				
15	5477	5512	5532	5577	5612	5662	5707	5765	5815	5879	5934	5994	6048	6104	6153				
20	5191	5236	5272	5333	5380	5445	5509	5588	5660	5748	5828	5918	6001	6085	6162				
25	4888	4952	5006	5084	5148	5232	5312	5409	5504	5618	5731	5857	5982	6105	6221				
30	4552	4641	4719	4825	4915	5021	5120	5237	5358	5504	5663	5839	6026	6205	6377				
35	4171	4287	4389	4532	4655	4798	4930	5079	5236	5428	5649	5892	6157	6399	6616				
40	3771	3894	4006	4174	4332	4532	4720	4935	5164	5422	5704	5999	6299	6554	6756				
45	3394	3494	3587	3752	3923	4170	4415	4722	5019	5333	5624	5941	6234	6518	6754				
50	3080	3140	3190	3313	3456	3700	3964	4322	4655	5016	5359	5756	6166	6561	6918				
55	2808	2840	2845	2919	3008	3215	3469	3852	4263	4751	5270	5815	6403	6921	7324				
60	2441	2487	2483	2541	2601	2764	2986	3402	3961	4696	5475	6180	6873	7343	7543				
65	1971	2034	2059	2133	2192	2334	2532	2983	3728	4748	5706	6390	6754	6922	6865				
70	1388	1511	1581	1681	1749	1892	2084	2535	3269	4315	5112	5560	5510	5162	5044				
75	810	929	1026	1168	1273	1413	1564	1882	2343	3079	3655	4000	3851	3404	3398				
80	456	503	557	681	755	863	924	1088	1258	1623	1906	2027	2296	2346	2156				
85	214	240	252	288	299	325	328	382	409	551	597	800	1067	1288	1004				
90	18.8	23.0	25.6	28.6	29.9	29.2	27.9	31.7	35.8	42.3	77.2	84.0	88.7	210	151				
95	11.7	12.5	14.0	15.8	18.0	20.2	22.2	23.9	22.8	25.6	25.6	27.0	27.2	28.3	27.8				
100	15.4	16.1	17.5	19.2	21.3	23.3	25.3	26.9	28.6	29.8	31.3	32.6	34.0	35.2	35.0				
105	20.3	21.2	22.9	24.5	26.7	28.4	30.5	31.9	33.7	35.1	37.1	38.9	40.7	42.2	42.2				
110	25.7	26.7	28.5	30.1	32.2	33.8	35.5	36.8	38.6	40.3	42.7	44.8	46.8	48.5	48.5				
115	31.3	32.2	34.1	35.6	37.6	38.9	40.5	41.8	43.8	45.6	48.1	50.3	52.1	53.7	53.7				
120	36.8	37.6	39.2	40.6	42.3	43.7	45.4	46.9	49.0	50.8	53.0	54.7	56.2	57.6	57.5				
125	42.0	42.6	43.8	45.1	46.8	48.2	50.0	51.4	53.3	54.7	56.2	57.6	58.6	59.8	59.6				
130	46.7	46.9	47.7	48.8	50.4	52.0	53.6	54.8	56.2	57.1	58.0	59.0	59.5	60.4	59.9				
135	50.3	50.7	51.2	51.9	53.2	54.5	55.9	56.9	57.8	58.4	59.0	59.7	59.8	60.4	59.6				
140	53.0	53.6	54.0	54.4	55.3	56.2	57.2	57.9	58.7	59.1	59.6	60.2	60.0	60.3	59.0				
145	54.7	55.3	55.8	56.1	56.6	57.2	57.8	58.4	59.0	59.2	59.6	60.1	59.9	60.2	58.6				
150	55.6	56.2	56.7	57.2	57.5	57.8	58.3	58.7	59.3	59.4	59.5	59.9	59.6	60.1	58.4				
155	56.3	56.8	57.2	57.6	58.1	58.5	58.9	59.2	59.8	60.0	60.1	60.4	60.0	60.7	59.0				
160	57.0	57.4	57.6	57.9	58.2	58.6	59.1	59.5	60.2	60.6	60.9	61.3	60.9	61.5	60.1				
165	57.5	57.8	57.9	58.1	58.3	58.5	58.9	59.2	59.9	60.3	60.9	61.7	61.4	62.2	61.0				
170	57.8	58.0	58.0	58.1	58.3	58.5	58.8	59.0	59.6	60.0	60.5	61.5	61.6	62.4	61.4				
175	57.6	57.7	57.7	57.8	57.9	58.1	58.3	58.6	59.1	59.5	60.0	61.0	61.3	62.4	61.7				
180	56.9	57.1	57.1	57.1	57.2	57.3	57.5	57.7	58.2	58.5	58.8	59.6	59.8	61.4	61.3				

C Range: 0 - 360DEG
 C Interval: 5.0DEG
 Test Speed: HIGH
 Temperature:25.3DEG
 Operators:S
 Test Date:2024-5-30

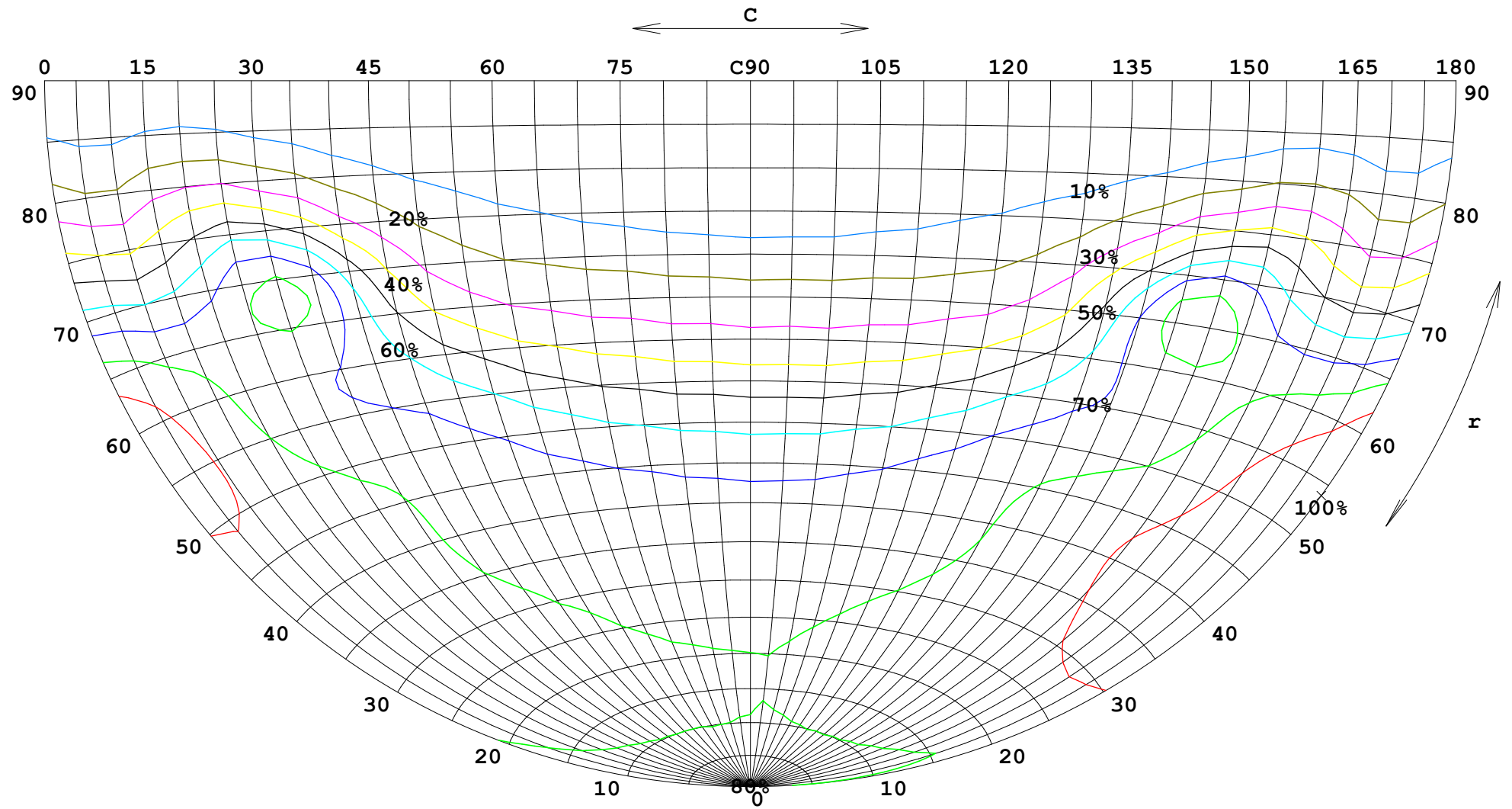
γ Range: 0 - 180DEG
 γ Interval: 1.0DEG
 Test System:EVERFINE GO-2000B_V1 SYSTEM V2.00.446
 Humidity:65.0%
 Test Distance:7.850m [K=1.0000]
 Remarks:

FLUX DATA:

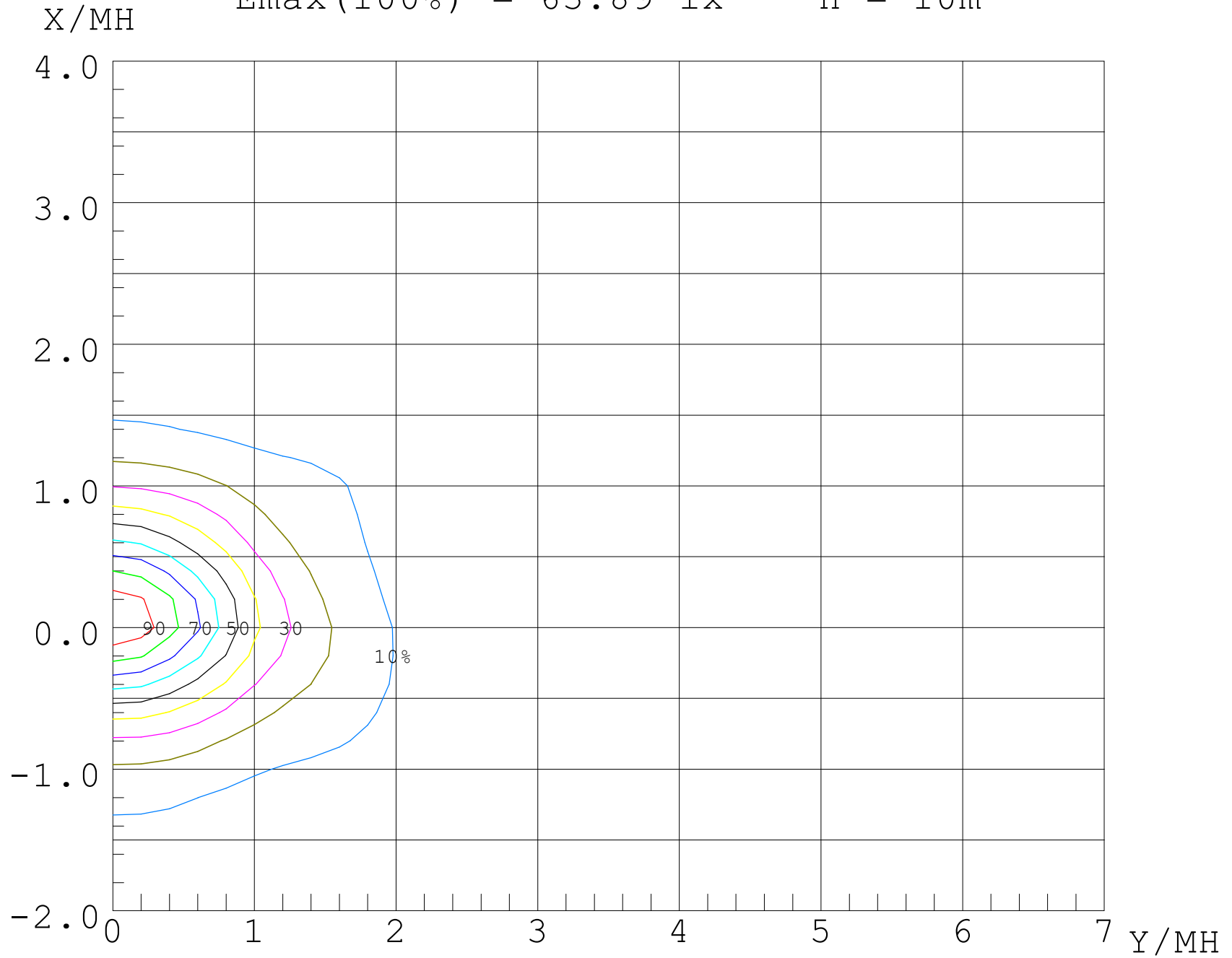
LOR: 100.0 %
STREET DOWN: 12908 lm
STREET UP: 103.7 lm
HOUSE DOWN: 10995 lm
HOUSE UP: 134.6 lm



$I_{max}(100\%) = 7999 \text{ cd}$



$E_{max}(100\%) = 63.89 \text{ lx}$ $H = 10\text{m}$



UF (%)

80

70

60

50

40

30

20

10

0

-2

-1

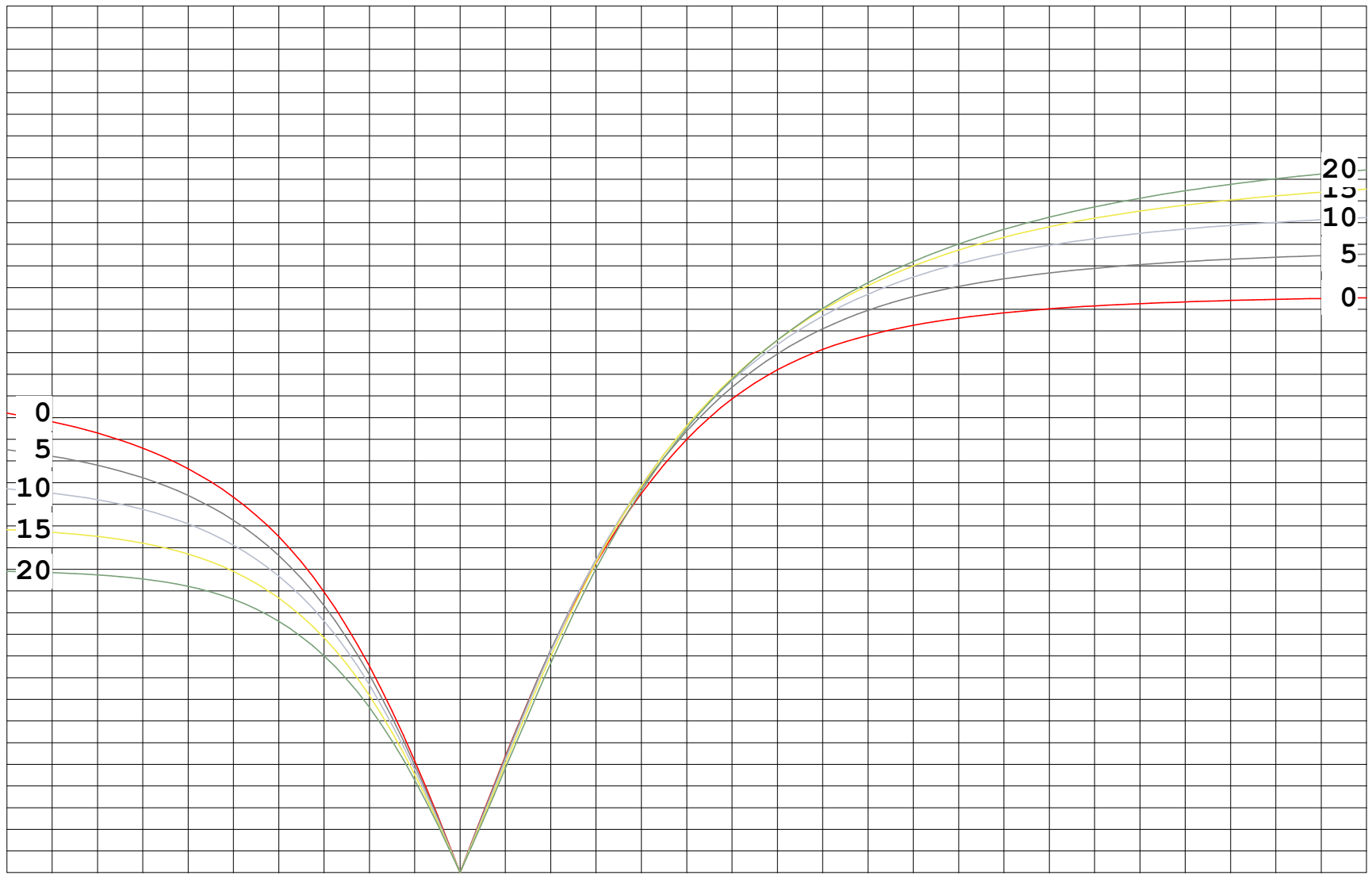
0

1

2

3

4 X/MH



20
15
10
5
0

0
5
10
15
20