



# LED SURFACE MINI PANEL

► **DESIGN** - LED SURFACE MINI PANEL with a classic, low-profile design is an ideal solution for low ceilings. The acrylic lens with a 110° beam angle grants you even light distribution. It is designed to operate on 120V circuits.

► **COLOR SELECTABLE** - You can choose either a 3,000K warm white, 4,000K cool white or 5,000K daylight color temperature.

► **MOTION SENSOR** - The built-in microwave motion sensor will turn off the fixture automatically when no motion is detected.

► **BATTERY BACK-UP** - The built-in battery back-up provide 90 minutes of power in case of emergency.

► **DIMMING** - Smooth triac dimming capabilities ranging from 10% to 100% with modern LED dimmers allow you to control the look and feel of your space.

► **INSTALLATION** - The fixture can be installed on either an existing outlet box or a remodeled can by using a retrofit kit with universal TP24 or E26 connectors. It is also suitable for Damp Locations, making it perfect for family room, bedroom or any other common areas.

► **ADVANTAGES** - With a lifespan of 50,000 hours, these fixtures are made to last decades under normal operation! ASD provides a 5-year limited warranty along with ETL and Energy Star certifications to guarantee top quality products and safety!

Catalog number	
Notes	
Type	



Finish:	White
	Bronze
	Black

Model	Watts	Voltage	Dimmable	Lumens	CCT	Finish	Dimensions	Type	Option
<b>MPR ROUND</b>									
ASD-MPR-5D10CC-WH-6PACK	10W	120 V	TRIAC	630/777/727 lm	3CCT (3,000 K/4,000 K/5,000 K)	White	5-5/16" x 1"	Round	-
ASD-MPR-5D10CC-BR-6PACK	10W	120 V	TRIAC	630/777/727 lm	3CCT (3,000 K/4,000 K/5,000 K)	Bronze	5-5/16" x 1"	Round	-
ASD-MPR-5D10CC-BK-6PACK	10W	120 V	TRIAC	630/777/727 lm	3CCT (3,000 K/4,000 K/5,000 K)	Black	5-5/16" x 1"	Round	-
ASD-MPR-7D15CC-WH	15W	120 V	TRIAC	1,020/1,341/1,135 lm	3CCT (3,000 K/4,000 K/5,000 K)	White	7-1/16" x 1"	Round	-
ASD-MPR-7D15CC-WH-6PACK	15W	120 V	TRIAC	1,020/1,341/1,135 lm	3CCT (3,000 K/4,000 K/5,000 K)	White	7-1/16" x 1"	Round	-
ASD-MPR-7D15CC-BR-6PACK	15W	120 V	TRIAC	1,020/1,341/1,135 lm	3CCT (3,000 K/4,000 K/5,000 K)	Bronze	7-1/16" x 1"	Round	-
ASD-MPR-7D15CC-BK	15W	120 V	TRIAC	1,020/1,341/1,135 lm	3CCT (3,000 K/4,000 K/5,000 K)	Black	7-1/16" x 1"	Round	-
ASD-MPR-7D15CC-BK-6PACK	15W	120 V	TRIAC	1,020/1,341/1,135 lm	3CCT (3,000 K/4,000 K/5,000 K)	Black	7-1/16" x 1"	Round	-
ASD-MPR-9D18CC-WH	18W	120 V	TRIAC	1,315/1,614/1,508 lm	3CCT (3,000 K/4,000 K/5,000 K)	White	8-7/8" x 1"	Round	-
ASD-MPR-9D18CC-WH-6PACK	18W	120 V	TRIAC	1,315/1,614/1,508 lm	3CCT (3,000 K/4,000 K/5,000 K)	White	8-7/8" x 1"	Round	-
ASD-MPR-9D18CC-BR-6PACK	18W	120 V	TRIAC	1,315/1,614/1,508 lm	3CCT (3,000 K/4,000 K/5,000 K)	Bronze	8-7/8" x 1"	Round	-
ASD-MPR-9D18CC-BK	18W	120 V	TRIAC	1,315/1,614/1,508 lm	3CCT (3,000 K/4,000 K/5,000 K)	Black	8-7/8" x 1"	Round	-
ASD-MPR-9D18CC-BK-6PACK	18W	120 V	TRIAC	1,315/1,614/1,508 lm	3CCT (3,000 K/4,000 K/5,000 K)	Black	8-7/8" x 1"	Round	-
ASD-MPR-12D24CC-WH	24W	120 V	TRIAC	1,680/2,333/2,067 lm	3CCT (3,000 K/4,000 K/5,000 K)	White	11-13/16" x 1"	Round	-
ASD-MPR-12D24CC-BR	24W	120 V	TRIAC	1,680/2,333/2,067 lm	3CCT (3,000 K/4,000 K/5,000 K)	Bronze	11-13/16" x 1"	Round	-
ASD-MPR-12D24CC-BK	24W	120 V	TRIAC	1,680/2,333/2,067 lm	3CCT (3,000 K/4,000 K/5,000 K)	Black	11-13/16" x 1"	Round	-
<b>MPS SQUARE</b>									
ASD-MPS-5D10CC-WH-6PACK	10W	120 V	TRIAC	636/744/683 lm	3CCT (3,000 K/4,000 K/5,000 K)	White	5-5/16" x 5-5/16" x 1-1/8"	Square	-
ASD-MPS-5D10CC-BK-6PACK	10W	120 V	TRIAC	636/744/683 lm	3CCT (3,000 K/4,000 K/5,000 K)	Black	5-5/16" x 5-5/16" x 1-1/8"	Square	-
ASD-MPS-7D15CC-WH-6PACK	15W	120 V	TRIAC	974/1,094/1,021 lm	3CCT (3,000 K/4,000 K/5,000 K)	White	7-1/16" x 7-1/16" x 1-1/8"	Square	-
ASD-MPS-7D15CC-BK-6PACK	15W	120 V	TRIAC	974/1,094/1,021 lm	3CCT (3,000 K/4,000 K/5,000 K)	Black	7-1/16" x 7-1/16" x 1-1/8"	Square	-
ASD-MPS-9D18CC-WH	18W	120 V	TRIAC	1,302/1,452/1,370 lm	3CCT (3,000 K/4,000 K/5,000 K)	White	8-7/8" x 8-7/8" x 1-1/8"	Square	-
ASD-MPS-9D18CC-WH-6PACK	18W	120 V	TRIAC	1,302/1,452/1,370 lm	3CCT (3,000 K/4,000 K/5,000 K)	White	8-7/8" x 8-7/8" x 1-1/8"	Square	-
ASD-MPS-9D18CC-BK	18W	120 V	TRIAC	1,302/1,452/1,370 lm	3CCT (3,000 K/4,000 K/5,000 K)	Black	8-7/8" x 8-7/8" x 1-1/8"	Square	-
ASD-MPS-9D18CC-BK-6PACK	18W	120 V	TRIAC	1,302/1,452/1,370 lm	3CCT (3,000 K/4,000 K/5,000 K)	Black	8-7/8" x 8-7/8" x 1-1/8"	Square	-
ASD-MPS-12D24CC-WH	24W	120 V	TRIAC	1,656/1,824/1,727 lm	3CCT (3,000 K/4,000 K/5,000 K)	White	11-13/16" x 11-13/16" x 1-1/8"	Square	-
ASD-MPS-12D24CC-BK	24W	120 V	TRIAC	1,656/1,824/1,727 lm	3CCT (3,000 K/4,000 K/5,000 K)	Black	11-13/16" x 11-13/16" x 1-1/8"	Square	-
<b>MPR-MS ROUND WITH MOTION SENSOR</b>									
ASD-MPR-9N18CC-MS-WH	18W	120 V	-	1,300/1,430/1,340 lm	3CCT (3,000 K/4,000 K/5,000 K)	White	8-3/4" x 3/4"	Round	Motion sensor

For most up-to-date spec sheets please refer to [asd-lighting.com](http://asd-lighting.com)

**ASD LIGHTING CORP**

E-mail: [orders@asd-lighting.com](mailto:orders@asd-lighting.com) | Web site: [www.asd-lighting.com](http://www.asd-lighting.com)





# LED SURFACE MINI PANEL

Model	Watts	Voltage	Dimmable	Lumens	CCT	Finish	Dimensions	Type	Option
MPR-EM ROUND WITH BATTERY BACK-UP									
ASD-MPR-7D15CC-EM-WH	15W	120 V	TRIAC	1,122/1,209/1,111 lm	3CCT (3,000 K/4,000 K/5,000 K)	White	7-1/16" x 1-3/4"	Round	6W Battery back up
ASD-MPR-9D18CC-EM-WH	18W	120 V	TRIAC	1,412/1,674/1,437 lm	3CCT (3,000 K/4,000 K/5,000 K)	White	8-7/8" x 1-3/4"	Round	12W Battery back up
ASD-SP7-MPR-WH	Sub-plate for LED Round Surface Mini Panel 7"						7-1/8" x 1-3/4"	Round	-

## PRODUCT SPECIFICATIONS:

Construction & Materials				
Housing	Plastic			
Lens	Acrylic			
Finish	White, Bronze, Black			
Weight	ASD-MPR-5D10CC-WH-6PACK	3.4 lbs (1.5 kg)	ASD-MPR-12D24CC-BK	2.2 lbs (1 kg)
	ASD-MPR-5D10CC-BR-6PACK		ASD-MPS-5D10CC-WH-6PACK	3.6 lbs (1.6 kg)
	ASD-MPR-5D10CC-BK-6PACK		ASD-MPS-5D10CC-BK-6PACK	
	ASD-MPR-7D15CC-WH	0.8 lbs (0.4 kg)	ASD-MPS-7D15CC-WH-6PACK	5.4 lbs (2.4 kg)
	ASD-MPR-7D15CC-WH-6PACK	4.9 lbs (2.2 kg)	ASD-MPS-7D15CC-BK-6PACK	
	ASD-MPR-7D15CC-BR-6PACK		ASD-MPS-9D18CC-WH	1.4 lbs (0.6 kg)
	ASD-MPR-7D15CC-BK	0.8 lbs (0.4 kg)	ASD-MPS-9D18CC-WH-6PACK	7.6 lbs (3.4 kg)
	ASD-MPR-7D15CC-BK-6PACK	4.9 lbs (2.2 kg)	ASD-MPS-9D18CC-BK	1.4 lbs (0.6 kg)
	ASD-MPR-9D18CC-WH	1.1 lbs (0.5 kg)	ASD-MPS-9D18CC-BK-6PACK	7.6 lbs (3.4 kg)
	ASD-MPR-9D18CC-WH-6PACK	6.7 lbs (3 kg)	ASD-MPS-12D24CC-WH	4.5 lbs (2 kg)
	ASD-MPR-9D18CC-BR-6PACK		ASD-MPS-12D24CC-BK	
	ASD-MPR-9D18CC-BK	1.1 lbs (0.5 kg)	ASD-MPR-9N18CC-MS-WH	1 lbs (0.5 kg)
	ASD-MPR-9D18CC-BK-6PACK	6.7 lbs (3 kg)	ASD-MPR-7D15CC-EM-WH	1.6 lbs (0.7 kg)
	ASD-MPR-12D24CC-WH	2.2 lbs (1 kg)	ASD-MPR-9D18CC-EM-WH	2.1 lbs (1 kg)
	ASD-MPR-12D24CC-BR			
Environmental system				
Work environment	Suitable for Damp Locations			
Operating temperature	-4°F to 113°F (-20°C to 45°C)			
L-70 Life	> 50,000 hrs			
Optical system				
Luminous flux	ASD-MPR-5D10CC-WH-6PACK	630/777/727 lm	ASD-MPR-12D24CC-BK	1,680/2,333/2,067 lm
	ASD-MPR-5D10CC-BR-6PACK		ASD-MPS-5D10CC-WH-6PACK	636/744/683 lm
	ASD-MPR-5D10CC-BK-6PACK		ASD-MPS-5D10CC-BK-6PACK	
	ASD-MPR-7D15CC-WH	1,020/1,341/1,135 lm	ASD-MPS-7D15CC-WH-6PACK	974/1,094/1,021 lm
	ASD-MPR-7D15CC-WH-6PACK		ASD-MPS-7D15CC-BK-6PACK	
	ASD-MPR-7D15CC-BR-6PACK		ASD-MPS-9D18CC-WH	1,302/1,452/1,370 lm
	ASD-MPR-7D15CC-BK		ASD-MPS-9D18CC-WH-6PACK	
	ASD-MPR-7D15CC-BK-6PACK		ASD-MPS-9D18CC-BK	
	ASD-MPR-9D18CC-WH	1,315/1,614/1,508 lm	ASD-MPS-9D18CC-BK-6PACK	1,656/1,824/1,727 lm
	ASD-MPR-9D18CC-WH-6PACK		ASD-MPS-12D24CC-WH	
	ASD-MPR-9D18CC-BR-6PACK		ASD-MPS-12D24CC-BK	1,300/1,430/1,340 lm
	ASD-MPR-9D18CC-BK		ASD-MPR-9N18CC-MS-WH	
	ASD-MPR-9D18CC-BK-6PACK	1,680/2,333/2,067 lm	ASD-MPR-7D15CC-EM-WH	1,122/1,209/1,111 lm
	ASD-MPR-12D24CC-WH		ASD-MPR-9D18CC-EM-WH	1,412/1,674/1,437 lm
	ASD-MPR-12D24CC-BR			
Color temperature	3CCT switch (3,000/4,000/5,000 K), 3,000 K by default			
CRI	> 80			

For most up-to-date spec sheets please refer to [asd-lighting.com](http://asd-lighting.com)

ASD LIGHTING CORP

E-mail: [orders@asd-lighting.com](mailto:orders@asd-lighting.com) | Web site: [www.asd-lighting.com](http://www.asd-lighting.com)





# LED SURFACE MINI PANEL

Electrical system									
Input voltage		120 V							
Max input current	ASD-MPR-5D10CC-WH-6PACK	0.09 A					ASD-MPR-12D24CC-BK	0.22 A	
	ASD-MPR-5D10CC-BR-6PACK						ASD-MPS-5D10CC-WH-6PACK	0.091 A	
	ASD-MPR-5D10CC-BK-6PACK						ASD-MPS-5D10CC-BK-6PACK		
	ASD-MPR-7D15CC-WH	0.1375 A					ASD-MPS-7D15CC-WH-6PACK	0.137 A	
	ASD-MPR-7D15CC-WH-6PACK						ASD-MPS-7D15CC-BK-6PACK		
	ASD-MPR-7D15CC-BR-6PACK						ASD-MPS-9D18CC-WH	0.165 A	
	ASD-MPR-7D15CC-BK	0.165 A					ASD-MPS-9D18CC-WH-6PACK		
	ASD-MPR-7D15CC-BK-6PACK						ASD-MPS-9D18CC-BK		
	ASD-MPR-9D18CC-WH						ASD-MPS-9D18CC-BK-6PACK		
	ASD-MPR-9D18CC-WH-6PACK	0.165 A					ASD-MPS-12D24CC-WH	0.22 A	
	ASD-MPR-9D18CC-BR-6PACK						ASD-MPS-12D24CC-BK		
	ASD-MPR-9D18CC-BK						ASD-MPR-9N18CC-MS-WH	0.165 A	
	ASD-MPR-9D18CC-BK-6PACK	0.22 A					ASD-MPR-7D15CC-EM-WH	0.1375 A	
	ASD-MPR-12D24CC-WH						ASD-MPR-9D18CC-EM-WH	0.165 A	
ASD-MPR-12D24CC-BR									
Inrush current (Action time)	ASD-MPR-5D10CC-WH-6PACK	0.08 A (0.05 S)					ASD-MPR-12D24CC-BK	0.2 A (0.05 S)	
	ASD-MPR-5D10CC-BR-6PACK						ASD-MPS-5D10CC-WH-6PACK	0.08 A (0.1 S)	
	ASD-MPR-5D10CC-BK-6PACK						ASD-MPS-5D10CC-BK-6PACK		
	ASD-MPR-7D15CC-WH	0.12 A (0.05 S)					ASD-MPS-7D15CC-WH-6PACK	0.12 A (0.1 S)	
	ASD-MPR-7D15CC-WH-6PACK						ASD-MPS-7D15CC-BK-6PACK		
	ASD-MPR-7D15CC-BR-6PACK						ASD-MPS-9D18CC-WH	0.15 A (0.1 S)	
	ASD-MPR-7D15CC-BK	0.15 A (0.05 S)					ASD-MPS-9D18CC-WH-6PACK		
	ASD-MPR-7D15CC-BK-6PACK						ASD-MPS-9D18CC-BK		
	ASD-MPR-9D18CC-WH						ASD-MPS-9D18CC-BK-6PACK		
	ASD-MPR-9D18CC-WH-6PACK	0.15 A (0.05 S)					ASD-MPS-12D24CC-WH	0.2 A (0.1 S)	
	ASD-MPR-9D18CC-BR-6PACK						ASD-MPS-12D24CC-BK		
	ASD-MPR-9D18CC-BK						ASD-MPR-9N18CC-MS-WH	0.15 A (0.05 S)	
	ASD-MPR-9D18CC-BK-6PACK	0.2 A (0.05 S)					ASD-MPR-7D15CC-EM-WH	0.12 A (0.1 S)	
	ASD-MPR-12D24CC-WH						ASD-MPR-9D18CC-EM-WH	0.15 A (0.1 S)	
ASD-MPR-12D24CC-BR									
Off state power		0W							
Power consumption	ASD-MPR-5D10CC-WH-6PACK	10W					ASD-MPR-12D24CC-BK	24W	
	ASD-MPR-5D10CC-BR-6PACK						ASD-MPS-5D10CC-WH-6PACK	10W	
	ASD-MPR-5D10CC-BK-6PACK						ASD-MPS-5D10CC-BK-6PACK		
	ASD-MPR-7D15CC-WH	15W					ASD-MPS-7D15CC-WH-6PACK	15W	
	ASD-MPR-7D15CC-WH-6PACK						ASD-MPS-7D15CC-BK-6PACK		
	ASD-MPR-7D15CC-BR-6PACK						ASD-MPS-9D18CC-WH	18W	
	ASD-MPR-7D15CC-BK	18W					ASD-MPS-9D18CC-WH-6PACK		
	ASD-MPR-7D15CC-BK-6PACK						ASD-MPS-9D18CC-BK		
	ASD-MPR-9D18CC-WH						ASD-MPS-9D18CC-BK-6PACK		
	ASD-MPR-9D18CC-WH-6PACK	24W					ASD-MPS-12D24CC-WH	24W	
	ASD-MPR-9D18CC-BR-6PACK						ASD-MPS-12D24CC-BK		
	ASD-MPR-9D18CC-BK						ASD-MPR-9N18CC-MS-WH	18W	
	ASD-MPR-9D18CC-BK-6PACK	24W					ASD-MPR-7D15CC-EM-WH	15W	
	ASD-MPR-12D24CC-WH						ASD-MPR-9D18CC-EM-WH	18W	
ASD-MPR-12D24CC-BR									
Power factor		> 0.9							
Output voltage		-				for EM models: 33 V			
Max output current		-				for ASD-MPR-7D15CC-EM-WH model: 0.35 A		for ASD-MPR-9D18CC-EM-WH model: 0.45 A	
Surge protection DM/CM		1.25 kV / 1.25 kV							
Dimming compatible controls *									
Brand		Lutron				Leviton			
Models	MACL-153MLH-WH	PD-6WCL-WH-R	DVCL-153PR	P-PKG1W	R02-DW6HD-2RW	R68-06674-P0T	66721LW	Maxxima	
	STCL-153PH-WH	TGCL-153PH-LA	AYCL-153P	SCL-153P	R00-RNL06-0TW	6674-POW	DSL06	MEW-DM600	
Regular and voluntary certifications									
5-year limited warranty									
Energy Star listed (except EM and MPS models)									
cETLus certified 4001256									

\* The list of dimmers is relevant for models without a motion sensor.

For most up-to-date spec sheets please refer to [asd-lighting.com](http://asd-lighting.com)

**ASD LIGHTING CORP**

E-mail: [orders@asd-lighting.com](mailto:orders@asd-lighting.com) | Web site: [www.asd-lighting.com](http://www.asd-lighting.com)

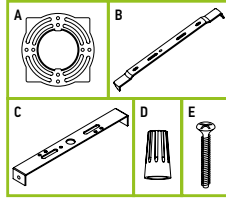




# LED SURFACE MINI PANEL

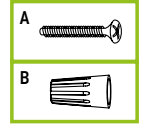
## PACKAGE CONTENTS FOR ROUND FIXTURE:

Description	Q-ty
LED Round Surface Mini Panel	1
Mounting plate (A) for regular models	1
Bracket (B) for MS model	1
Bracket (C) for EM models	1
Wire nut (D)	3
Screw (E)	2
Box	1



## PACKAGE CONTENTS FOR SQUARE FIXTURE:

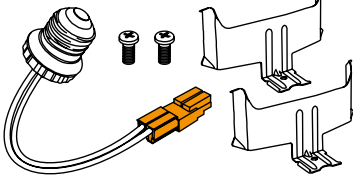
Description	Q-ty
LED Square Surface Mini Panel	1
Screw (A)	2
Wire nut (B)	3
Box	1



## ACCESSORIES (sold separately):

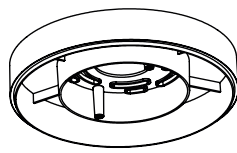
### Retrofit kit with E26 base and TP24 connector for LED Round Surface Mini Panel 5"

ASD-RK4-MPR



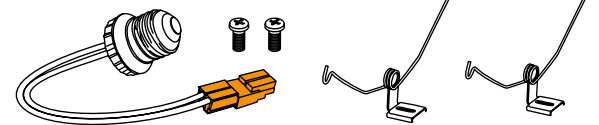
### Sub-plate for LED Round Surface Mini Panel 7"

ASD-SP7-MPR-WH



### Retrofit kit with E26 base and TP24 connector for LED Round Surface Mini Panel 7/9/12"

ASD-RK6-MPR



## BUILT-IN MOTION SENSOR INFORMATION

Sensor has two selectable modes:

### • Day mode

The light is ON only when motion detected.

The light sensing option is OFF.

Detection range: 9.8-16.4 ft

Time: 45 sec.

### • Night Mode

The light is ON when illumination is <70 lux (6.5 fc) and motion detected.

Detection range: 9.8-16.4 ft

Time: 45 sec.



If illumination is >200 lux (18.6 fc) the light is always OFF.



CEILING MOUNTED

⚠ RF interference may affect the operation of this sensor

## BUILT-IN BATTERY BACK-UP INFORMATION

Operating condition	 Blinking
Emergency mode	 OFF
Test switch	

1. Indicator Light is Blinking: Battery back-up recharging.

2. Indicator Light is OFF: Battery back-up is full charge; Battery back-up is working.

3. In order to test the battery back-up press the test switch one time. To turn off the emergency power state press test switch one more time.

Specifications		
Input voltage	100-277 V 50/60 Hz	
AC Input current	max 110 mA	
AC Input power rating	max 5.0W	
Output current and voltage	200 mA 20-36 Vdc	360 mA 20-36 Vdc
Output power	6W	12W
Lumens	400 lm	600 lm
Emergency time	min 90 minutes	
Warranty	5 Years	
Indicator light	Illuminated test switch	
Battery	Li-ion battery - 11.1 V/2200 mAh	
Battery charging current	440 mA	
Charging time	8 hours	
Temperature rating (Ambient)	32°F to 113°F (0°C to 45°C)	

## ACCESSORY COMPATIBILITY LIST:

Accessories		Retrofit kit with E26 base and TP24 connector for LED Surface Mini Panel 5" ASD-RK4-MPR	Retrofit kit with E26 base and TP24 connector for LED Surface Mini Panel 7/9/12" ASD-RK6-MPR	Sub-plate for LED Round Surface Mini Panel 7" ASD-SP7-MPR-WH
Models				
ASD-MPR	5 inch	•		
	7 inch		•	•
	9 inch		•	
	12 inch		•	
ASD-MPS	5 inch	•		
	7 inch		•	
	9 inch		•	
	12 inch		•	
ASD-MPR-MS	9 inch		•	
ASD-MPR-EM	7 inch			
	9 inch			

For most up-to-date spec sheets please refer to [asd-lighting.com](http://asd-lighting.com)

ASD LIGHTING CORP

E-mail: [orders@asd-lighting.com](mailto:orders@asd-lighting.com) | Web site: [www.asd-lighting.com](http://www.asd-lighting.com)





# LED SURFACE MINI PANEL

## INSTALLATION GUIDE

### IMPORTANT SAFETY INFORMATION:

Please read all the instructions below before installation.

- Make sure that the supply voltage corresponds to the rated product voltage.
- The product must be installed by a qualified electrician in accordance with the National Electrical Code and corresponding local codes.
- If the product is damaged, do not use it.

### ⚠ WARNING

**RISK OF PERSONAL INJURY – READ and follow all WARNINGS and installation instructions.** Keep or give to the owner for future reference.

**Risk of cuts:** Wear gloves to prevent cuts or abrasions when removing from carton, handling, installing, and maintaining this product.

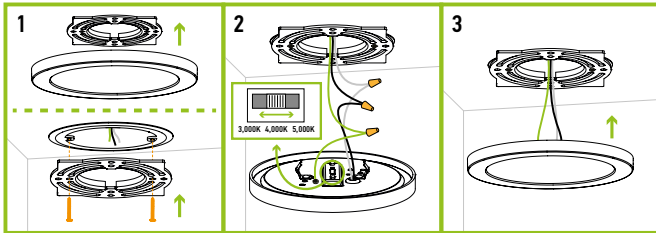
**Risk of electric shock:** This product must be installed in accordance with the applicable installation code by a person familiar with the construction and operation of the product and the hazards involved.

**Risk of Fire:** Minimum 194°F supply conductors. Consult a qualified electrician to ensure correct branch circuit conductor.

ASD® assumes no responsibility for claims arising out of improper or careless installation or handling of this product.

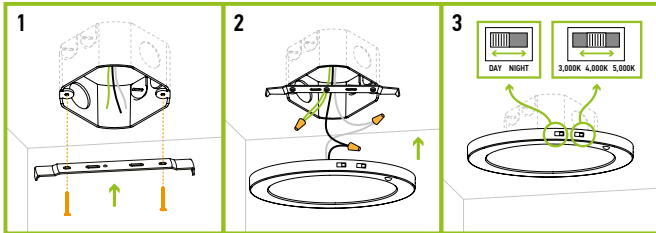
### ROUND FIXTURE INSTALLATION:

- Remove the mounting plate from the fixture and attach it to the existing outlet box in the ceiling using two screws.
- Choose preferred color temperature by adjusting the switch. Connect the wires: Black to Black, White to White, Green to Green. Secure the connection with wire nuts.
- Insert the fixture to the bracket until it clicks.

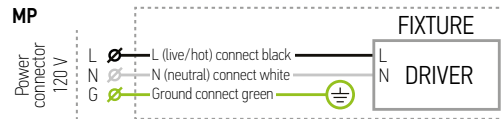


### MOTION SENSOR FIXTURE INSTALLATION:

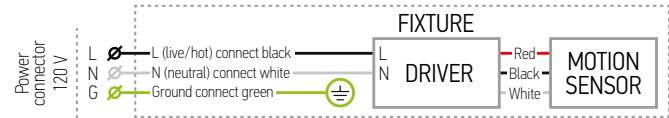
- Attach the bracket to the existing outlet box in the ceiling using two screws.
- Connect the wires: Black to Black, White to White, Green to Green. Secure the connection with wire nuts. Insert the fixture to the bracket until it clicks.
- Choose preferred color temperature and motion sensor setting by adjusting switch position on the side of the fixture.



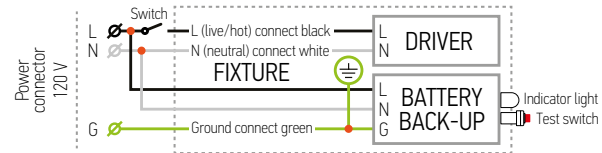
### ELECTRICAL SCHEMATIC DIAGRAM:



#### MPR-MS with motion sensor

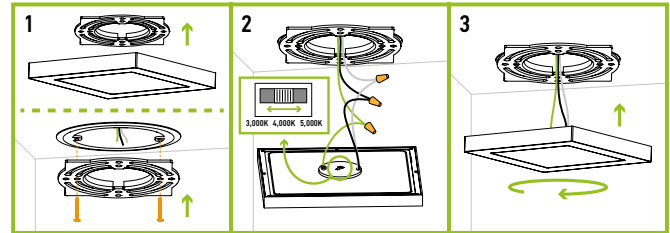


#### MPR-EM with battery back-up



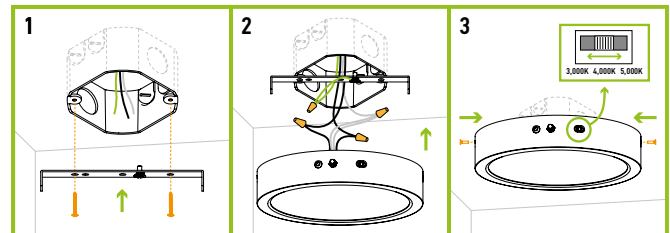
### SQUARE FIXTURE INSTALLATION:

- Remove the mounting plate from the fixture and attach it to the existing outlet box in the ceiling using two screws.
- Choose preferred color temperature by adjusting the switch. Connect the wires: Black to Black, White to White, Green to Green. Secure the connection with wire nuts.
- Insert the fixture to the mounting plate until it clicks.



### BATTERY BACK-UP FIXTURE INSTALLATION:

- Unscrew the two fixture screws from both sides of the lamp. Remove the bracket and attach it to the existing outlet box in the ceiling using two screws. Connect the LED Emergency controller to the battery back-up.
- Connect the wires: Black to Black, White to White, Green to Green. Secure the connection with wire nuts. Insert the fixture into the bracket and fix it with two fixture screws on both sides of the lamp.
- Choose needed color temperature by adjusting switch position on the side of the fixture.



For most up-to-date spec sheets please refer to [asd-lighting.com](http://asd-lighting.com)



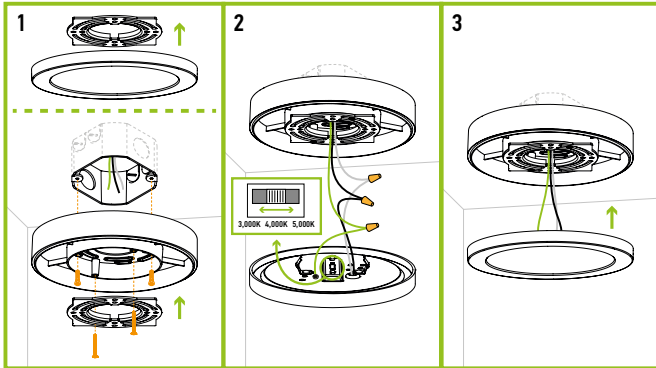


# LED SURFACE MINI PANEL

## SUB-PLATE INSTALLATION ASD-SP7-MPR-WH

**sold separately:**

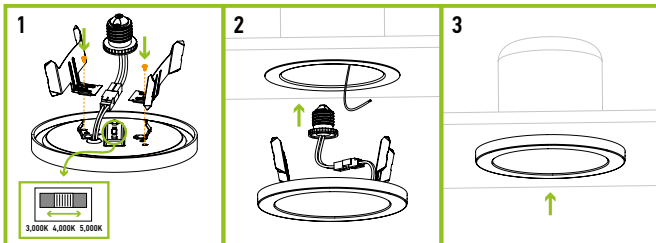
1. Place the subplate on the outlet box in the ceiling and fix it using two screws. Remove the mounting plate from the LED fixture and attach it to the sub-plate with another two screws.
2. Choose preferred color temperature by adjusting the switch. Connect the wires: Black to Black, White to White, Green to Green. Secure the connection with wire nuts.
3. Insert the fixture in to the mounting plate until it clicks.



## RETROFIT KIT FOR 5" FIXTURE ASD-RK4-MPR

**sold separately:**

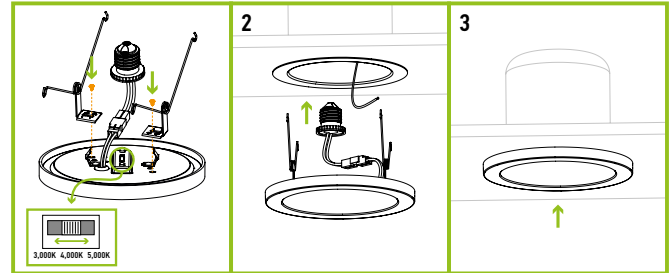
1. Attach spring-loaded clips to the 4" retrofit holes using short screws. Join the TP24 connector to the fixture wires and connect it to the E26 socket adapter. Choose preferred color temperature by adjusting the switch.
2. Screw the E26 socket adapter into the socket in the housing.
3. Press the fixture into the housing.



## RETROFIT KIT FOR 7/9/12" FIXTURE

**ASD-RK6-MPR sold separately:**

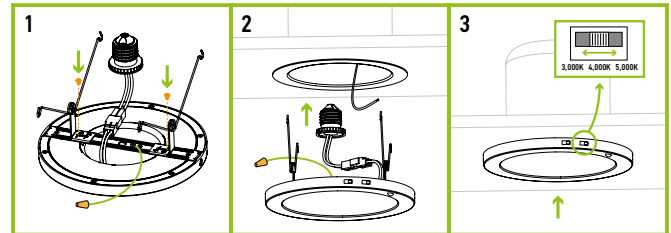
1. Attach spring-loaded clips to the 6" retrofit holes using short screws. Join the TP24 connector to the fixture wires and connect it to the E26 socket adapter. Choose preferred color temperature by adjusting the switch.
2. Screw the E26 socket adapter into the socket in the housing.
3. Press the fixture into the housing.



## RETROFIT KIT FOR MOTION SENSOR FIXTURE

**ASD-RK6-MPR sold separately:**

1. Fix the bracket to the fixture until it clicks. Attach spring-loaded clips to the bracket using short screws. Join the TP24 connector to the fixture wires and connect it to the E26 socket adapter.
2. Screw the E26 socket adapter into the socket in the housing.
3. Press the fixture into the housing. Choose needed color temperature and motion sensor setting by adjusting switch position on the side of the fixture.



For most up-to-date spec sheets please refer to [asd-lighting.com](http://asd-lighting.com)

**ASD LIGHTING CORP**

E-mail: [orders@asd-lighting.com](mailto:orders@asd-lighting.com) | Web site: [www.asd-lighting.com](http://www.asd-lighting.com)





# LED SURFACE MINI PANEL

## ORDERING INFORMATION

Model	UPC	Pcs. per carton	Carton size	Carton weight	GTIN 14
<b>MPR ROUND</b>					
ASD-MPR-5D10CC-WH-6PACK	810050737654	2	15.2" x 7.9" x 6.9"	8.2 lbs	10810050737651
ASD-MPR-5D10CC-BR-6PACK	810128111720	2	15.2" x 7.9" x 6.9"	8.2 lbs	10810128111727
ASD-MPR-5D10CC-BK-6PACK	810128110389	2	15.2" x 7.9" x 6.9"	8.2 lbs	10810128110386
ASD-MPR-7D15CC-WH	810050736275	12	16.5" x 10" x 7.9"	12.6 lbs	30810050736276
ASD-MPR-7D15CC-WH-6PACK	810050737661	2	15.6" x 9.7" x 8.7"	12.2 lbs	10810050737668
ASD-MPR-7D15CC-BR-6PACK	810128111744	2	15.6" x 9.7" x 8.7"	12.2 lbs	10810128111741
ASD-MPR-7D15CC-BK	810050736732	12	16.5" x 10" x 7.9"	12.6 lbs	30810050736733
ASD-MPR-7D15CC-BK-6PACK	810050737029	2	15.6" x 9.7" x 8.7"	12.2 lbs	10810050737026
ASD-MPR-9D18CC-WH	810050734622	12	19.7" x 10.2" x 9.7"	17.2 lbs	30810050734623
ASD-MPR-9D18CC-WH-6PACK	810050737678	2	15.6" x 11.4" x 10"	15.7 lbs	10810050737675
ASD-MPR-9D18CC-BR-6PACK	810128111768	2	15.6" x 11.4" x 10"	15.7 lbs	10810128111765
ASD-MPR-9D18CC-BK	810050736749	12	19.7" x 10.2" x 9.7"	17.2 lbs	30810050736740
ASD-MPR-9D18CC-BK-6PACK	819201026753	2	15.6" x 11.4" x 10"	15.7 lbs	10819201026750
ASD-MPR-12D24CC-WH	810050736299	4	13.2" x 6.9" x 12.6"	10.5 lbs	30810050736290
ASD-MPR-12D24CC-BR	810128111836	4	13.2" x 6.9" x 12.6"	10.5 lbs	10810128111833
ASD-MPR-12D24CC-BK	819201026760	4	13.2" x 6.9" x 12.6"	10.5 lbs	10819201026767
<b>MPS SQUARE</b>					
ASD-MPS-5D10CC-WH-6PACK	819201026746	2	15" x 8.3" x 6.9"	9.5 lbs	10819201026743
ASD-MPS-5D10CC-BK-6PACK	810128110396	2	15" x 8.3" x 6.9"	9.5 lbs	10810128110393
ASD-MPS-7D15CC-WH-6PACK	810128110082	2	15.8" x 9.7" x 8.7"	13.1 lbs	10810128110089
ASD-MPS-7D15CC-BK-6PACK	819201029846	2	15.8" x 9.7" x 8.7"	13.1 lbs	10819201029843
ASD-MPS-9D18CC-WH	810050737630	12	19.7" x 10.2" x 9.7"	20.6 lbs	10810050737637
ASD-MPS-9D18CC-WH-6PACK	810050737647	2	15.8" x 11.4" x 10.4"	19 lbs	10810050737644
ASD-MPS-9D18CC-BK	810050738873	12	19.7" x 10.2" x 9.7"	20.6 lbs	10810050738870
ASD-MPS-9D18CC-BK-6PACK	819201029211	2	15.8" x 11.4" x 10.4"	19 lbs	10819201029218
ASD-MPS-12D24CC-WH	819201024513	4	13.2" x 6.9" x 12.6"	10.8 lbs	10819201024510
ASD-MPS-12D24CC-BK	819201026876	4	13.2" x 6.9" x 12.6"	10.8 lbs	10819201026873
<b>MPR-MS ROUND WITH MOTION SENSOR</b>					
ASD-MPR-9N18CC-MS-WH	810050734493	12	19.7" x 8.7" x 9.7"	16.3 lbs	30810050734494
<b>MPR-EM ROUND WITH BATTERY BACK-UP</b>					
ASD-MPR-7D15CC-EM-WH	810050738040	12	18.7" x 17.7" x 9.1"	22.6 lbs	10810050738047
ASD-MPR-9D18CC-EM-WH	810050738057	12	21.3" x 18.9" x 10.8"	33 lbs	10810050738054
ASD-SP7-MPR-WH	810050738064	12	14.8" x 7.9" x 7.7"	5.1 lbs	10810050738061

## ACCESSORIES:

Model	Description	Weight	Dimensions		UPC			
ASD-RK4-MPR	Retrofit kit with E26 base and TP24 connector for LED Surface Mini Panel 5"	0.1 lbs	3-1/8" x 1-1/4" x 1-7/8"		810050731089			
ASD-RK6-MPR	Retrofit kit with E26 base and TP24 connector for LED Surface Mini Panel 7/9/12"	0.1 lbs	6-3/4" x 15/16" x 3-1/8"		810050731096			
Model	Pcs. in middle box	Middle box size	Middle box weight	GTIN 14 in middle box	Pcs. per carton	Carton size	Carton weight	GTIN 14 in carton
ASD-RK4-MPR	12	7.1" x 5.1" x 5.7"	1.3 lbs	10810050731086	48	11" x 7.7" x 12.4"	6 lbs	20810050731083
ASD-RK6-MPR	12	7.1" x 5.1" x 5.7"	1.4 lbs	10810050731093	48	11" x 7.7" x 12.4"	6.3 lbs	20810050731090

For most up-to-date spec sheets please refer to [asd-lighting.com](http://asd-lighting.com)

**ASD LIGHTING CORP**

E-mail: [orders@asd-lighting.com](mailto:orders@asd-lighting.com) | Web site: [www.asd-lighting.com](http://www.asd-lighting.com)

