



LED DOWNLIGHT 2 INCH

► **DESIGN & OPTIONS** - LED DOWNLIGHT 2 INCH features a durable airtight die-cast aluminum body, multifaceted specular reflector with a 38° beam angle, and an anti-glare PC lens. Triac dimming features included. It is also CCT selectable, letting you set it to 2,700K, 3,000K, 3,500K, 4,000K or 5,000K with a simple switch. It runs on 120V and has a CRI90+.



The battery back-up kit provides 90 minutes of power in case of emergency.

► **INSTALLATION** - No housing is required. Two adjustable springs clips secure the luminaire to the ceiling. It is IC rated for direct contact with insulation. Refer to install instructions for detailed steps.

► **APPLICATION** - LED DOWNLIGHT 2 INCH is perfect for retail, hospitality, commercial and certain residential settings. It is suitable for Wet locations, making it perfect for spaces with humidity requirements.

► **ENERGY SAVING & EFFICIENCY** - With a lifespan of 50,000 hours, these fixtures are made to last decades under normal operation! This fixture can cut your electric bill by up to 80% instantly and will save you a significant amount of money in its lifetime.

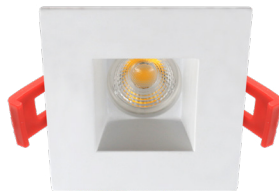
► **CERTIFICATION & WARRANTY** - Buy with confidence: ASD provides a 5-year limited warranty along with ETL certification to guarantee top quality products and safety!

Energy Star classification allow participation in rebates; please check the rebate programs available in your state.

Catalog number	
Notes	
Type	



REFLECTOR: WHITE
TRIM: WHITE



REFLECTOR: WHITE
TRIM: WHITE



REFLECTOR: CHROME
TRIM: BLACK



REFLECTOR: CHROME
TRIM: WHITE

Model	Size	Watts	Voltage	Dimmable	Lumens	CCT	Reflector color	Trim color	Dimensions (LxH)	Type
ASD-CD-PR-2D8AC-WH	2 inch	8W	120 V	TRIAC	600/561/615/645/649 lm	5CCT (2,700/3,000/3,500/4,000/5,000 K)	White	White	3-3/16" x 2-15/16"	Round
ASD-CD-PS-2D8AC-WH	2 inch	8W	120 V	TRIAC	600/534/584/612/615 lm	5CCT (2,700/3,000/3,500/4,000/5,000 K)	White	White	3-3/16" x 2-15/16"	Square
ASD-CD-CR-2D8AC-CH/BK	2 inch	8W	120 V	TRIAC	600/536/584/609/606 lm	5CCT (2,700/3,000/3,500/4,000/5,000 K)	Chrome	Black	3-3/16" x 2-15/16"	Round
ASD-CD-CR-2D8AC-CH/WH	2 inch	8W	120 V	TRIAC	600/536/584/609/606 lm	5CCT (2,700/3,000/3,500/4,000/5,000 K)	Chrome	White	3-3/16" x 2-15/16"	Round
ASD-CD-PR-2D15AC-WH	2 inch	15W	120 V	TRIAC	830/978/1,078/1,110/1,023 lm	5CCT (2,700/3,000/3,500/4,000/5,000 K)	White	White	3-3/16" x 4-15/16"	Round
ASD-CD-PS-2D15AC-WH	2 inch	15W	120 V	TRIAC	830/923/1,015/1,103/987 lm	5CCT (2,700/3,000/3,500/4,000/5,000 K)	White	White	3-3/16" x 4-15/16"	Square
ASD-CD-CR-2D15AC-CH/BK	2 inch	15W	120 V	TRIAC	830/842/934/1,011/964 lm	5CCT (2,700/3,000/3,500/4,000/5,000 K)	Chrome	Black	3-3/16" x 4-15/16"	Round
ASD-CD-CR-2D15AC-CH/WH	2 inch	15W	120 V	TRIAC	830/842/934/1,011/964 lm	5CCT (2,700/3,000/3,500/4,000/5,000 K)	Chrome	White	3-3/16" x 4-15/16"	Round

For most up-to-date spec sheets please refer to asd-lighting.com

ASD LIGHTING CORP

E-mail: orders@asd-lighting.com | Web site: www.asd-lighting.com





LED DOWNLIGHT 2 INCH

PRODUCT SPECIFICATIONS:

Construction & Materials					
Housing	Aluminum				
Lens	PC				
Reflector color	White, Chrome				
Trim color	White, Black				
Weight	ASD-CD-PR-2D8AC-WH	1 lb (0.43 kg)	ASD-CD-PR-2D15AC-WH	1.2 lb (0.5 kg)	
	ASD-CD-PS-2D8AC-WH		ASD-CD-PS-2D15AC-WH		
	ASD-CD-CR-2D8AC-CH/BK	0.8 lb (0.38 kg)	ASD-CD-CR-2D15AC-CH/BK	1.3 lb (0.6 kg)	
	ASD-CD-CR-2D8AC-CH/WH		ASD-CD-CR-2D15AC-CH/WH		
Environmental system					
Work environment	Suitable for Wet Locations, IP54				
Operating temperature	-4°F to 104°F (-20°C to 40°C)				
L-70 Life	> 50,000 hrs				
Optical system					
Luminous flux	ASD-CD-PR-2D8AC-WH	600/561/615/645/649 lm	ASD-CD-PR-2D15AC-WH	830/978/1,078/1,110/1,023 lm	
	ASD-CD-PS-2D8AC-WH	600/534/584/612/615 lm	ASD-CD-PS-2D15AC-WH	830/923/1,015/1,103/987 lm	
	ASD-CD-CR-2D8AC-CH/BK	600/536/584/609/606 lm	ASD-CD-CR-2D15AC-CH/BK	830/842/934/1,011/964 lm	
	ASD-CD-CR-2D8AC-CH/WH		ASD-CD-CR-2D15AC-CH/WH		
Color temperature	5CCT (2,700/3,000/3,500/4,000/5,000 K)				
CRI	> 90				
Electrical system					
Input voltage	120 V				
Max input current	ASD-CD-PR-2D8AC-WH	80 mA	ASD-CD-PR-2D15AC-WH	150 mA	
	ASD-CD-PS-2D8AC-WH		ASD-CD-PS-2D15AC-WH		
	ASD-CD-CR-2D8AC-CH/BK		ASD-CD-CR-2D15AC-CH/BK		
	ASD-CD-CR-2D8AC-CH/WH		ASD-CD-CR-2D15AC-CH/WH		
Inrush current (Action time)	4 A (0.5 S)				
Off state power	0W				
Power consumption	ASD-CD-PR-2D8AC-WH	8W	ASD-CD-PR-2D15AC-WH	15W	
	ASD-CD-PS-2D8AC-WH		ASD-CD-PS-2D15AC-WH		
	ASD-CD-CR-2D8AC-CH/BK		ASD-CD-CR-2D15AC-CH/BK		
	ASD-CD-CR-2D8AC-CH/WH		ASD-CD-CR-2D15AC-CH/WH		
Power factor	> 0.9				
Output voltage	36 V				
Max output current	ASD-CD-PR-2D8AC-WH	180 mA	ASD-CD-PR-2D15AC-WH	320 mA	
	ASD-CD-PS-2D8AC-WH	270 mA	ASD-CD-PS-2D15AC-WH		
	ASD-CD-CR-2D8AC-CH/BK	180 mA	ASD-CD-CR-2D15AC-CH/BK		
	ASD-CD-CR-2D8AC-CH/WH		ASD-CD-CR-2D15AC-CH/WH		
Surge protection DM/CM	2.5 kV / 2.5 kV				
Dimming compatible controls					
Brand	Lutron	Leviton	Cooper		
Models	DMD-LE3-D	DVCL-153P	IPL06-10Z	6672	SI06P
	CTCL-153P	DV-600P	DSL06	6621	
	SFTU-5A3P	PD-6WCL			
Regular and voluntary certifications					
5-year limited warranty					
cETLus certified 5003560					
Energy Star certified					

PACKAGE CONTENTS:

Description	Q-ty
LED Downlight 2 inch	1
Template (A)	1
Box	1

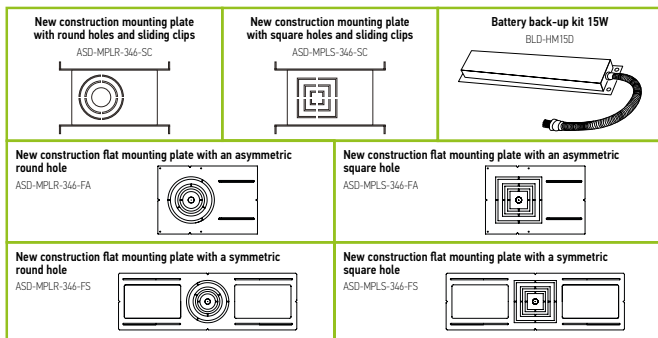


For most up-to-date spec sheets please refer to asd-lighting.com



LED DOWNLIGHT 2 INCH

ACCESSORIES (sold separately):



ACCESSORY COMPATIBILITY LIST:

Accessories	New construction mounting plate with round holes and sliding clips ASD-MPLR-346-SC	New construction mounting plate with square holes and sliding clips ASD-MPLS-346-SC	New construction flat mounting plate with an asymmetric round hole ASD-MPLR-346-FA	New construction flat mounting plate with an asymmetric square hole ASD-MPLS-346-FA	New construction flat mounting plate with a symmetric round hole ASD-MPLR-346-FS	New construction flat mounting plate with a symmetric square hole ASD-MPLS-346-FS	Battery back-up kit 15W BLD-HM15D
ASD-CD-PR-2DBAC-WH	•		•		•		•
ASD-CD-PS-2DBAC-WH		•		•		•	•
ASD-CD-PR-2D15AC-WH	•		•		•		•
ASD-CD-PS-2D15AC-WH		•		•		•	•
ASD-CD-CR-2DBAC-CH/BK	•		•		•		•
ASD-CD-CR-2DBAC-CH/WH	•		•		•		•
ASD-CD-CR-2D15AC-CH/BK	•		•		•		•
ASD-CD-CR-2D15AC-CH/WH	•		•		•		•

BATTERY BACK-UP KIT INFORMATION

BLD-HM15D sold separately:

Specifications	
Input voltage	100-347 VAC, 50/60 Hz
Input current	≤ 100 mA
Output voltage	≤ 175 V DC
Output power	15W
Lumen	1,000 lm
Application	< 150W (0/1-10 V Dimmable fixture)
Ambient temperature	30°F to 122°F (0°C to 50°C)

INSTALLATION GUIDE

IMPORTANT SAFETY INFORMATION:

Please read all the instructions below before installation.

- ▶ Make sure that the supply voltage corresponds to the rated product voltage.
- ▶ The product must be installed by a qualified electrician in accordance with the National Electrical Code and corresponding local codes.
- ▶ If the product is damaged, do not use it.

⚠ WARNING

RISK OF PERSONAL INJURY – READ and follow all WARNINGS and installation instructions.

Keep or give to the owner for future reference.

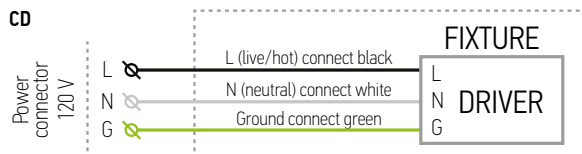
Risk of cuts: Wear gloves to prevent cuts or abrasions when removing from carton, handling, installing, and maintaining this product.

Risk of electric shock: This product must be installed in accordance with the applicable installation code by a person familiar with the construction and operation of the product and the hazards involved.

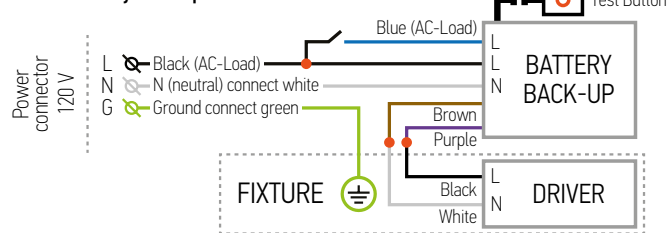
Risk of Fire: Minimum 194°F supply conductors. Consult a qualified electrician to ensure correct branch circuit conductor.

ASD® assumes no responsibility for claims arising out of improper or careless installation or handling of this product.

ELECTRICAL SCHEMATIC DIAGRAM:



CD with battery back-up kit



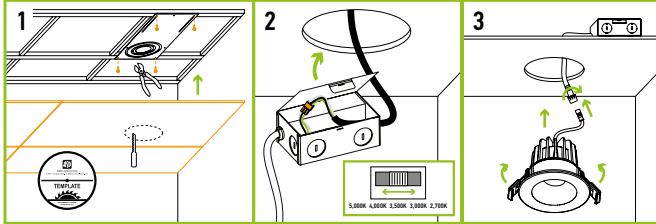
For most up-to-date spec sheets please refer to asd-lighting.com



LED DOWNLIGHT 2 INCH

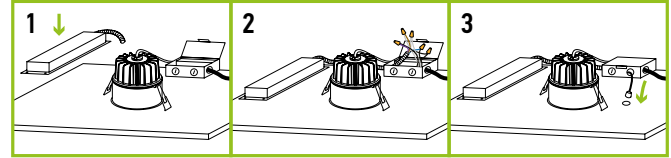
INSTALLATION STEPS:

1. Remove 3 inch central circle on the mounting plate. Place the mounting plate and secure its position with the screws on the beams. Install drywall board. Cut a hole in the ceiling using template (included).
2. Connect the wires: Black to Black, White to White, Green to Green. Select the color temperature you need by using the switch. Put the driver box above the ceiling through the hole in the frame.
3. Connect driver box and fixture using quick connector, fold up the two spring mounting tabs and release as the fixture is placed into the mounting hole.



INSTALLATION STEPS FOR BATTERY BACK-UP KIT:

1. Secure the battery back-up kit to the ceiling.
2. Connect wires as shown on electrical diagram.
3. Connect test switch and affix it in the hole on the surface.



ORDERING INFORMATION

Model	UPC	Pcs. per carton	Carton size	Carton weight	GTIN 14
ASD-CD-PR-2D8AC-WH	810050736541	18	14.8" x 10.8" x 13.4"	21.5 lb	10810050736548
ASD-CD-PS-2D8AC-WH	810050736572	18	14.8" x 10.8" x 13.4"	21.5 lb	10810050736579
ASD-CD-CR-2D8AC-CH/BK	810050737913	18	14.8" x 10.8" x 13.4"	19 lb	10810050737910
ASD-CD-CR-2D8AC-CH/WH	810050737920	18	14.8" x 10.8" x 13.4"	19 lb	10810050737927
ASD-CD-PR-2D15AC-WH	810050736565	18	13" x 12.8" x 18.1"	26.8 lb	10810050736562
ASD-CD-PS-2D15AC-WH	810050736589	18	13" x 12.8" x 18.1"	26.8 lb	10810050736586
ASD-CD-CR-2D15AC-CH/BK	810050737937	18	13" x 12.8" x 18.1"	27.6 lb	10810050737934
ASD-CD-CR-2D15AC-CH/WH	810050737944	18	13" x 12.8" x 18.1"	27.6 lb	10810050737941

ACCESSORIES:

Model	Name	Materials	Weight	Dimensions	UPC
ASD-MPLR-346-SC	New construction mounting plate with round holes and sliding clips	Iron	1.1 lb	14-3/8" x 10-9/16" x 1-5/8"	810050731577
ASD-MPLS-346-SC	New construction mounting plate with square holes and sliding clips	Iron	1.1 lb	14-3/8" x 10-9/16" x 1-5/8"	810050731843
ASD-MPLR-346-FA	New construction flat mounting plate with an asymmetric round hole	Iron	0.9 lb	13-1/4" x 9-1/16"	810050733854
ASD-MPLS-346-FA	New construction flat mounting plate with an asymmetric square hole	Iron	0.9 lb	13-1/4" x 9-1/16"	810050733861
ASD-MPLR-346-FS	New construction flat mounting plate with a symmetric round hole	Iron	1 lb	26" x 8-1/4"	810050733878
ASD-MPLS-346-FS	New construction flat mounting plate with a symmetric square hole	Iron	1 lb	26" x 8-1/4"	810050733885
BLD-HM15D	Battery back-up kit 15W	Iron, lithium	2.4 lb	12-15/16" x 1-7/16" x 15/16"	810050734882

Model	Pcs. in middle box	Middle box size	Middle box weight	GTIN 14 in middle box	Pcs. per carton	Carton size	Carton weight	GTIN 14 in carton
ASD-MPLR-346-SC	6	15" x 11.2" x 7.5"	7.7 lb	10810050731574	12	23.2" x 15.6" x 8.3"	17 lb	20810050731571
ASD-MPLS-346-SC	6	15" x 11.2" x 7.5"	7.5 lb	10810050731840	12	23.2" x 15.6" x 8.3"	16.4 lb	20810050731847
ASD-MPLR-346-FA	6	9.3" x 0.6" x 13.6"	5.6 lb	10810050733851	24	14.4" x 9.8" x 3.1"	22.5 lb	20810050733858
ASD-MPLS-346-FA	6	9.3" x 0.6" x 13.6"	5.5 lb	10810050733868	24	14.4" x 9.8" x 3.1"	22.9 lb	20810050733865
ASD-MPLR-346-FS	6	8.5" x 0.6" x 26.4"	6.1 lb	10810050733875	24	27.2" x 9.1" x 3.1"	25.2 lb	20810050733872
ASD-MPLS-346-FS	6	8.5" x 0.6" x 26.4"	6 lb	10810050733882	24	27.2" x 9.1" x 3.1"	24.6 lb	20810050733889
BLD-HM15D	-	-	-	-	10	18.5" x 13.4" x 11.8"	25.6 lb	10810050734889

For most up-to-date spec sheets please refer to asd-lighting.com

ASD LIGHTING CORP

E-mail: orders@asd-lighting.com | Web site: www.asd-lighting.com

