



LED UFO NSF HIGH BAY

► **DESIGN** - NSF LED UFO HIGH BAY features an easy-to-clean, smooth dust-proof surface with a watertight seal that can withstand frequent wash downs and is built with safety and sanitation in mind. Corrosion-resistant aluminum housing provides excellent heat dissipation. Comes with a 6.5ft cord to make the installation process easier. It is designed to operate on 120-277V or 277-480V circuits with a 0-10V dimmable driver.

► **SURGE PROTECTION** - 6kV protects the fixture from voltage spikes and current surges.

► **IP69K** - rating provides protection against ingress of dust and high temperature, high pressure water.

► **NSF** - Certified by the National Sanitation Foundation as safe for food service processing facilities that require a higher level of sanitation.

► **ADVANTAGES** - With calculated lifespan up to 132,000 hours, these fixtures are made to last decades under normal operation! ASD provides a 5-year limited warranty along with UL and DLC Premium certifications to guarantee top quality products and safety!

| | |
|-----------------------|--|
| <i>Catalog number</i> | |
| <i>Notes</i> | |
| <i>Type</i> | |



| Model | Watts | Voltage | Dimmable | Lumens | CCT | Finish | Dimensions (LxWxH) | Cord |
|----------------------|-------|-----------|----------|-----------|---------|--------|--------------------------------|--------|
| ASD-UHB2-FS-150D50 | 150W | 120-277 V | 0-10 V | 21,900 lm | 5,000 K | White | 17-1/16" x 17-1/16" x 7-11/16" | 6.5 ft |
| ASD-UHB2-FS-200D50 | 200W | 120-277 V | 0-10 V | 29,200 lm | 5,000 K | White | 17-1/16" x 17-1/16" x 7-11/16" | 6.5 ft |
| UHB2HV HIGH VOLTAGE | | | | | | | | |
| ASD-UHB2HV-FS-150D50 | 150W | 277-480 V | 0-10 V | 21,900 lm | 5,000 K | White | 17-1/16" x 17-1/16" x 7-11/16" | 6.5 ft |
| ASD-UHB2HV-FS-200D50 | 200W | 277-480 V | 0-10 V | 29,200 lm | 5,000 K | White | 17-1/16" x 17-1/16" x 7-11/16" | 6.5 ft |

ORDERING INFORMATION

| Model | Pcs. per carton | Carton size | Carton weight | GTIN 14 |
|----------------------|-----------------|----------------------|---------------|--------------|
| ASD-UHB2-FS-150D50 | 1 | 18.7" x 18.7" x 7.5" | 15.7 lbs | 810050734424 |
| ASD-UHB2-FS-200D50 | 1 | 18.7" x 18.7" x 7.5" | 17.9 lbs | 810050734431 |
| UHB2HV HIGH VOLTAGE | | | | |
| ASD-UHB2HV-FS-150D50 | 1 | 18.7" x 18.7" x 7.5" | 16.1 lbs | 810050737388 |
| ASD-UHB2HV-FS-200D50 | 1 | 18.7" x 18.7" x 7.5" | 19.2 lbs | 810050737395 |

ACCESSORIES:

| Model | Description | UPC | Pcs. per carton | Carton size | Carton weight | GTIN 14 |
|-----------|--|--------------|-----------------|----------------------|---------------|----------------|
| BLD-RM40R | Battery back-up kit 40W | 810050738507 | 4 | 23.6" x 13.8" x 7.9" | 32.5 lbs | 20810050738501 |
| RN1 | Remote test switch for battery back-up kit | 810050735223 | 50 | 13" x 9.8" x 6.5" | 8.3 lbs | 20810050735227 |

For most up-to-date spec sheets please refer to asd-lighting.com

ASD LIGHTING CORP

E-mail: orders@asd-lighting.com | Web site: www.asd-lighting.com





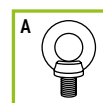
LED UFO NSF HIGH BAY

PRODUCT SPECIFICATIONS:

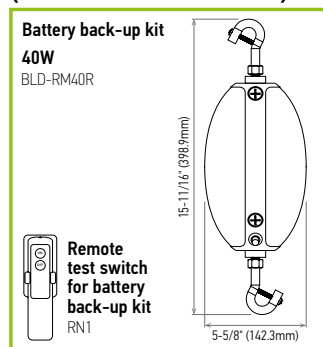
| Construction & Materials | | | Dimming compatible controls | | | | |
|------------------------------|---|-----------------------------|---|-------|--------|-----------|-----------|
| Housing | Die cast aluminum | | Brand | Ltech | Lutron | Leviton | Rab |
| Finish | White | | Models | E610P | NFTV | ZS057-D0Z | LCLC3/D10 |
| Weight | ASD-UHB2-FS-150D50 | 13.7 lbs (6.2 kg) | Regular and voluntary certifications | | | | |
| | ASD-UHB2-FS-200D50 | 15.9 lbs (7.2 kg) | 5-year limited warranty | | | | |
| | ASD-UHB2HV-FS-150D50 | 14.3 lbs (6.5 kg) | DesignLights Consortium (DLC) listed (Classification: Premium) | | | | |
| | ASD-UHB2HV-FS-200D50 | 17.2 lbs (7.8 kg) | Main: Indoor luminaires; General application: High-bay; Primary use: High-bay luminaires for commercial and industrial buildings | | | | |
| Environmental system | | | UL certified E473804 | | | | |
| Work environment | Suitable for Wet Locations, IP65/69K | | cETLus certified 4010110 (for model ASD-UHB-FS-100D50-PRM) | | | | |
| Operating temperature | for HV models: Suitable for Wet Locations, IP66/69K | | National Sanitation Foundation | | | | |
| Operating temperature | -40°F to 131°F (-40°C to 55°C) | | | | | | |
| L-70 Life | R > 60,000 hrs; C > 132,000 hrs | | | | | | |
| Optical system | | | | | | | |
| Luminous flux | ASD-UHB2-FS-150D50 | 21,900 lm | | | | | |
| | ASD-UHB2-FS-200D50 | 29,200 lm | | | | | |
| | ASD-UHB2HV-FS-150D50 | 21,900 lm | | | | | |
| | ASD-UHB2HV-FS-200D50 | 29,200 lm | | | | | |
| Color temperature | 5,000 K | | | | | | |
| CRI | > 80 | | | | | | |
| Electrical system | | | | | | | |
| Input voltage | Regular voltage: 120-277 V | | | | | | |
| | High voltage: 277-480 V | | | | | | |
| Max input current | ASD-UHB2-FS-150D50 | 1.25 A | | | | | |
| | ASD-UHB2-FS-200D50 | 2.4 A | | | | | |
| | ASD-UHB2HV-FS-150D50 | 1.6 A | | | | | |
| | ASD-UHB2HV-FS-200D50 | 1.8 A | | | | | |
| Inrush current (Action time) | 130 A (1 S) | for HV models: 50 A (0.5 S) | | | | | |
| Off state power | 0W | | | | | | |
| Power consumption | ASD-UHB2-FS-150D50 | 150W | | | | | |
| | ASD-UHB2-FS-200D50 | 200W | | | | | |
| | ASD-UHB2HV-FS-150D50 | 150W | | | | | |
| | ASD-UHB2HV-FS-200D50 | 200W | | | | | |
| Power factor | > 0.9 | | | | | | |
| Output voltage | 180-260 V | | | | | | |
| | for HV models: 22-56 V | | | | | | |
| Max output current | ASD-UHB2-FS-150D50 | 0.6 A | | | | | |
| | ASD-UHB2-FS-200D50 | 0.9 A | | | | | |
| | ASD-UHB2HV-FS-150D50 | 2.79 A | | | | | |
| | ASD-UHB2HV-FS-200D50 | 3.71 A | | | | | |
| Surge protection DM/CM | 4 kV / 6 kV | | for HV models: 6 kV / 10 kV | | | | |

PACKAGE CONTENTS:

| Description | Q-ty |
|----------------------|------|
| LED UFO NSF High Bay | 1 |
| Mounting ring (A) | 1 |
| Box | 1 |



ACCESSORIES (SOLD SEPARATELY):



ACCESSORY COMPATIBILITY LIST:

| Accessories | Models | Battery back-up kit 40W BLD-RM40R |
|-------------|-----------------------|-----------------------------------|
| | ASD-UHB-FS-100D50-PRM | • |
| | ASD-UHB2-FS-150D50 | • |
| | ASD-UHB2-FS-200D50 | • |
| | ASD-UHB2HV-FS-150D50 | |
| | ASD-UHB2HV-FS-200D50 | |

For most up-to-date spec sheets please refer to asd-lighting.com

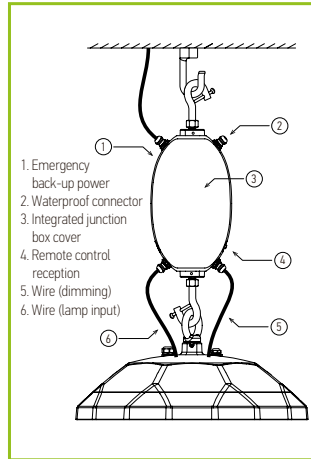


LED UFO NSF HIGH BAY

BATTERY BACK-UP KIT INFORMATION

BLD-RM40R sold separately:

BLD-RM40R listed for field and factory installation, provides constant power output to the load during emergency mode operation. They maintain illumination in emergency mode for a minimum of 90 minutes. It is an ideal emergency solution for UFO LED highbay lights.



REMOTE TEST SWITCH

RN1 sold separately:

- ▶ Press the ON button to switch battery to the back-up mode. The indicator light will turn off and fixture will decrease light output.
- ▶ Press OFF to switch the fixture to normal operation mode.



| Specifications | |
|--|---|
| Input voltage | 100-347 V |
| Input current | ≤ 200 mA |
| Input power | max 15W |
| Standby input power | < 0.8W (finished charging) |
| Maximum standby time between recharges | 6 months |
| Driver type | Constant power |
| Output power (emergency mode) | 40W |
| Output voltage range | ≤ 170 Vdc |
| Lumens | 6,000 lm |
| Maximum load power | 300W (when dimming to a minimum, the power needs to be less than 36W) |
| Peak output power (emergency mode) | 100W (lasts for 10 seconds) |
| Number of output channels | 1 channel |
| RFI/EMI | FCC part 15 class B |
| Output type | LED class 1 |
| Battery type | Li-ion |
| Battery capacity available | 2600 mAh (96 WH) |
| Battery recharge time | 24 hours |
| Battery discharge time | 90 min |
| Maximum lighting fixture weight | 44.1 lbs (20 kg) |
| Self-diagnostic test system | In the normal charging mode, the system performs a self-diagnostic test every 30 days, the system switches to emergency mode for 30S, and then automatically switches back to the normal charging mode. In the normal charging mode, the system switches to emergency mode every 360 days (after 11 monthly self-diagnostic test) and works until the end of discharge. Automatically switches back to normal charging mode after discharge. |
| Operating temperature | -32°F to 122°F (0°C to 50°C) |
| Service life | 50,000 hours |
| Input surge protection | 2 kV |
| Protections | Battery over discharge protection, output short circuit protection |
| Approvals/class | RoHS, UL924 listed, CEC title 20 Dry/Wet Locations, IP65 |

For most up-to-date spec sheets please refer to asd-lighting.com

ASD LIGHTING CORP

E-mail: orders@asd-lighting.com | Web site: www.asd-lighting.com





LED UFO NSF HIGH BAY

INSTALLATION GUIDE

IMPORTANT SAFETY INFORMATION:

Please read all the instructions below before installation.

- ▶ Make sure that the supply voltage corresponds to the rated product voltage.
- ▶ The product must be installed by a qualified electrician in accordance with the National Electrical Code and corresponding local codes.
- ▶ If the product is damaged, do not use it.

⚠ WARNING

RISK OF PERSONAL INJURY – READ and follow all WARNINGS and installation instructions.

Keep or give to the owner for future reference.

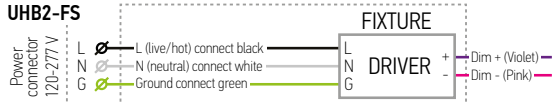
Risk of cuts: Wear gloves to prevent cuts or abrasions when removing from carton, handling, installing, and maintaining this product.

Risk of electric shock: This product must be installed in accordance with the applicable installation code by a person familiar with the construction and operation of the product and the hazards involved.

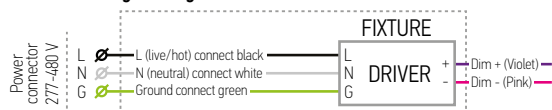
Risk of Fire: Minimum 194°F supply conductors. Consult a qualified electrician to ensure correct branch circuit conductor. ASD® assumes no responsibility for claims arising out of improper or careless installation or handling of this product.

ELECTRICAL SCHEMATIC DIAGRAM:

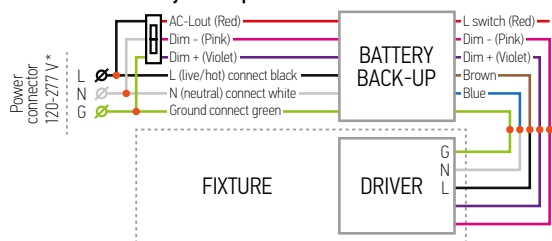
UHB2-FS



UHB2HV-FS high voltage

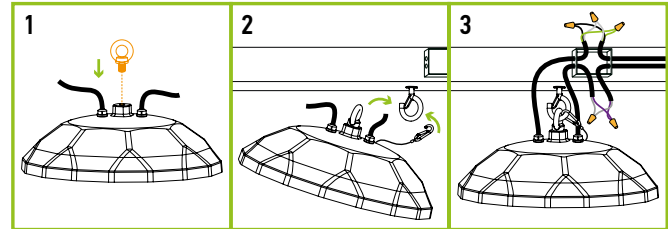


UHB2-FS with battery back-up kit



INSTALLATION STEPS:

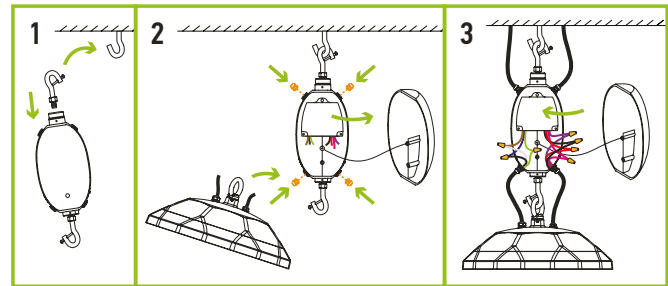
1. Screw the mounting ring into the top of the fixture.
2. Hang the fixture from the ceiling or other surface using a hook or chain (not provided).
3. Connect the wires: Black to Black, White to White, Green to Green. If you are not using the dimming wires cap them off but not together.



BATTERY BACK-UP KIT INSTALLATION

BLD-RM40R sold separately:

1. Install the G-hook to the top thread hole of the battery back-up and secure with the screw. Attach the battery back-up with G-hook to the ceiling hook.
2. Loosen the screw on the enclosed hook on the bottom of the emergency back-up, attach the ring on the fixture to the hook and tighten screw back. Open the cover and remove the plastic covers and install the five waterproof connectors.
3. Pull all wires through the waterproof connectors into the chamber of emergency driver. Connect wires: Brown, Blue, Green with AC input wires of the fixture. Connect dimming wires Purple and Pink with LED driver input dimming wires. Connect Black, White and Red wires of the battery back-up with AC main Power cord. Secure connection with wire nuts and lock up the cover of junction box.



For most up-to-date spec sheets please refer to asd-lighting.com