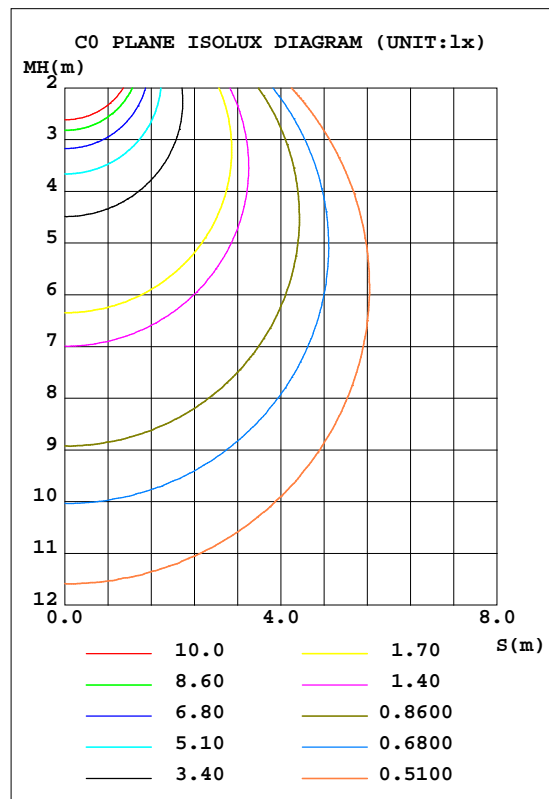
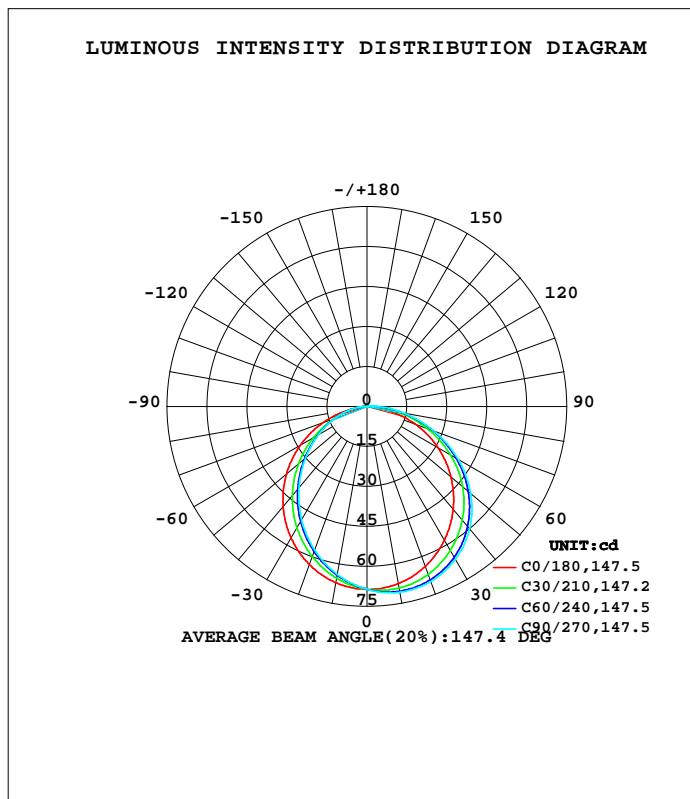


LUMINAIRE PHOTOMETRIC TEST REPORT

Test:U:120.13V I:0.0305A P:3.5848W PF:0.9791 Freq:59.98Hz Lamp Flux:198.313x1 lm		
NAME: ASD-UCB-9D3CC-WH-4000K	TYPE:0	WEIGHT:
SPEC.:3W	DIM.:	SERIAL No.:
MFR.: ASD Lighting Corp	SUR.:	Shielding Angle:

DATA OF LAMP		PHOTOMETRIC DATA			
MODE:ASD-UCB-9D3CC-WH-4000K		Imax(cd)	70.86	S/MH(C0/180)	1.24
NOMINAL POWER(W)	3	LOR(%)	100.0	S/MH(C90/270)	1.09
RATED VOLTAGE(V)	120	TOTAL FLUX(lm)	198.31	h UP, DN(C0-180)	0.7,57.5
NOMINAL FLUX(lm)	198.313	CIE CLASS	DIRECT	h UP, DN(C180-360)	0.3,41.5
LAMPS INSIDE	1	h up(%)	1.0	CIBSE SHR NOM	1.25
TEST VOLTAGE(V)	120	h down(%)	99.0	CIBSE SHR MAX	1.35



C Range: 0 - 360DEG
 C Interval: 15.0DEG
 Test Speed: MEDIUM
 Temperature:25.3DEG
 Operators:
 Test Date:21 April 2021

g Range: 0 - 180DEG
 g Interval: 0.5DEG
 Test System:EVERFINE GO-SPEX500_V1 SYSTEM V2.0.402
 Humidity:65.0%
 Test Distance:3.010m [K=1.0000]
 Remarks:

ZONAL FLUX DIAGRAM

ZONAL FLUX DIAGRAM:

g	C0	C45	C90	C135	C180	C225	C270	C315	g	F zone	F total	%lum,lamp
10	67.50	70.02	70.76	69.70	67.16	64.82	64.00	65.06	0- 10	6.488	6.488	3.27,3.27
20	63.91	68.47	69.88	67.94	63.19	58.77	57.40	59.31	10- 20	18.55	25.04	12.6,12.6
30	58.07	64.27	66.25	63.54	56.99	50.89	49.13	51.66	20- 30	28.03	53.07	26.8,26.8
40	50.41	57.62	59.87	56.88	48.98	41.69	39.69	42.59	30- 40	33.69	86.76	43.7,43.7
50	41.15	48.68	50.87	48.21	39.45	31.64	30.09	32.50	40- 50	34.83	121.6	61.3,61.3
60	30.69	37.74	39.50	37.59	28.75	21.60	20.84	22.18	50- 60	31.44	153.0	77.2,77.2
70	19.21	25.58	26.60	25.34	17.31	12.45	12.60	12.64	60- 70	24.15	177.2	89.3,89.3
80	6.524	12.86	13.65	12.36	5.886	5.175	5.641	5.115	70- 80	14.35	191.5	96.6,96.6
90	0.0790	1.733	2.493	1.062	0.1353	0.4589	0.9024	0.4966	80- 90	4.800	196.3	99.99
100	0.0854	0.6683	0.8357	0.4899	0.1085	0.1234	0.1484	0.1607	90-100	0.6313	197.0	99.3,99.3
110	0.2247	0.3637	0.6765	0.2043	0.1994	0.1915	0.2143	0.2169	100-110	0.3381	197.3	99.5,99.5
120	0.3056	0.2016	0.2309	0.2224	0.2367	0.2153	0.2584	0.2492	110-120	0.2459	197.6	99.6,99.6
130	0.2969	0.3683	0.2663	0.2095	0.2252	0.2216	0.2740	0.2405	120-130	0.2248	197.8	99.7,99.7
140	0.2371	0.3805	0.4630	0.2387	0.2115	0.2225	0.2266	0.2204	130-140	0.2081	198.0	99.8,99.8
150	0.1985	0.2026	0.5042	0.1835	0.1879	0.2197	0.2257	0.2152	140-150	0.1693	198.2	99.9,99.9
160	0.1779	0.1712	0.1723	0.1517	0.1637	0.1406	0.1748	0.1696	150-160	0.0916	198.2	100,100
170	0.1510	0.2216	0.1883	0.1724	0.1404	0.1136	0.1415	0.1454	160-170	0.0529	198.3	100,100
180	0.1643	0.1694	0.1635	0.1659	0.1637	0.1704	0.1632	0.1662	170-180	0.0149	198.3	100,100
DEG	LUMINOUS INTENSITY:cd									UNIT:lm		

C Range: 0 - 360DEG
 C Interval: 15.0DEG
 Test Speed: MEDIUM
 Temperature:25.3DEG
 Operators:
 Test Date:21 April 2021

g Range: 0 - 180DEG
 g Interval: 0.5DEG
 Test System:EVERFINE GO-SPEX500_V1 SYSTEM V2.0.402
 Humidity:65.0%
 Test Distance:3.010m [K=1.0000]
 Remarks:

UGR(Unified Glare Rating) Table

Test:U:120.13V I:0.0305A P:3.5848W PF:0.9791 Freq:59.98Hz Lamp Flux:198.313x1 lm										
NAME: ASD-UCB-9D3CC-WH-4000K					TYPE:0			WEIGHT:		
SPEC.:3W					DIM.:			SERIAL No.:		
MFR.: ASD Lighting Corp					SUR.:			Shielding Angle:		
ceiling/cavity	0.7	0.7	0.5	0.5	0.3	0.7	0.7	0.5	0.5	0.3
walls	0.5	0.3	0.5	0.3	0.3	0.5	0.3	0.5	0.3	0.3
working plane	0.2	0.2	0.2	0.2	0.2	0.2	0.2	0.2	0.2	0.2
Room dimensions	Viewed crosswise					Viewed endwise				
x = 2H y = 2H	6.4	7.9	6.6	8.1	8.3	7.2	8.7	7.5	8.9	9.2
3H	7.9	9.3	8.2	9.5	9.8	9.0	10.4	9.3	10.6	10.9
4H	8.5	9.8	8.8	10.1	10.4	9.8	11.1	10.1	11.4	11.7
6H	8.8	10.1	9.2	10.4	10.7	10.4	11.7	10.8	12.0	12.3
8H	8.9	10.1	9.2	10.4	10.7	10.7	11.9	11.1	12.2	12.6
12H	8.9	10.0	9.2	10.4	10.7	11.0	12.2	11.4	12.5	12.8
4H 2H	7.2	8.5	7.5	8.8	9.1	7.8	9.2	8.1	9.4	9.7
3H	8.9	10.1	9.3	10.4	10.7	9.8	11.0	10.2	11.3	11.6
4H	9.7	10.8	10.1	11.1	11.4	10.8	11.8	11.1	12.2	12.5
6H	10.2	11.1	10.6	11.5	11.9	11.6	12.5	12.0	12.9	13.3
8H	10.3	11.2	10.7	11.6	12.0	11.9	12.8	12.4	13.2	13.6
12H	10.4	11.2	10.8	11.6	12.0	12.3	13.1	12.8	13.5	14.0
8H 4H	10.1	11.0	10.6	11.4	11.8	11.1	11.9	11.5	12.3	12.7
6H	10.9	11.6	11.3	12.0	12.5	12.1	12.8	12.5	13.2	13.7
8H	11.1	11.8	11.6	12.2	12.7	12.6	13.2	13.1	13.7	14.2
12H	11.3	11.8	11.8	12.3	12.8	13.1	13.7	13.6	14.1	14.6
12H 4H	10.2	11.0	10.6	11.4	11.9	11.1	11.9	11.5	12.3	12.7
6H	11.0	11.7	11.5	12.1	12.6	12.2	12.8	12.6	13.3	13.7
8H	11.3	11.9	11.8	12.4	12.9	12.7	13.3	13.2	13.8	14.3
Variations with the observer position at spacings:										
S = 1.0H	+ 0.2 / - 0.2					+ 0.1 / - 0.2				
1.5H	+ 0.3 / - 0.4					+ 0.2 / - 0.3				
2.0H	+ 0.2 / - 0.6					+ 0.1 / - 0.3				

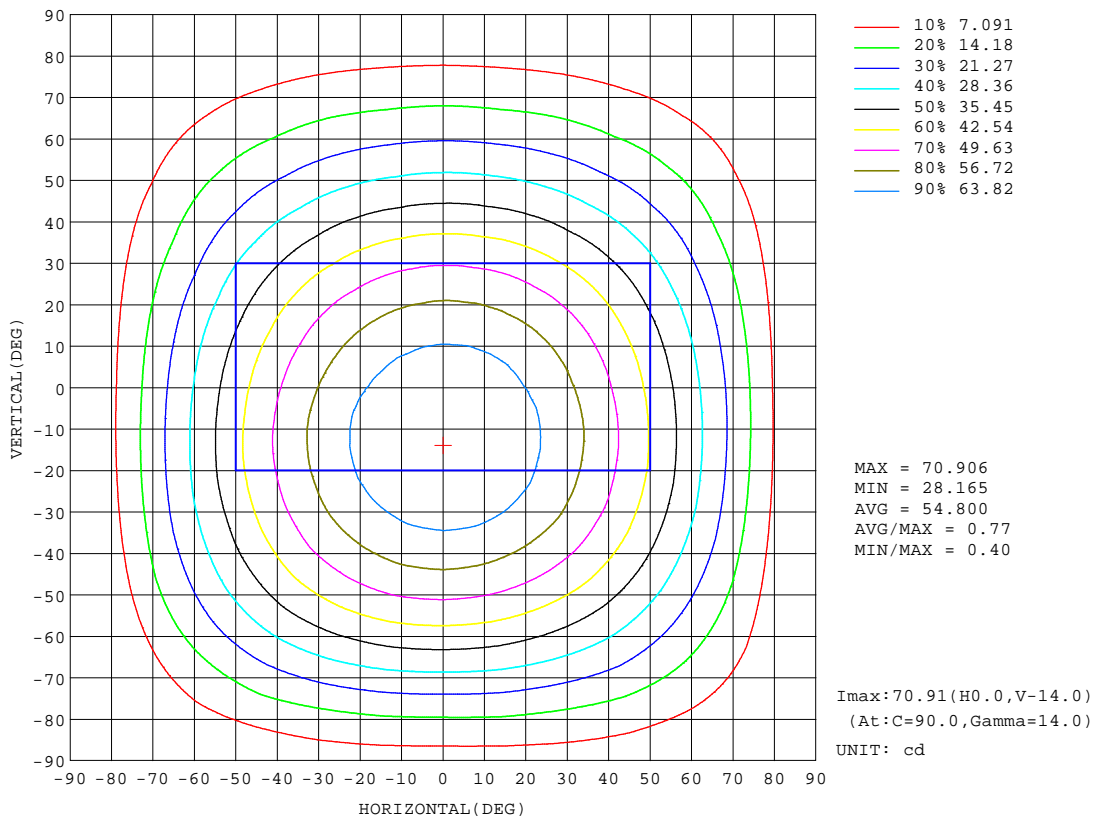
CIE Pub.117, 198.3 lm Total Lamp Luminous Flux Corrected (8log(F/F0) = -5.6)

C Range: 0 - 360DEG
 C Interval: 15.0DEG
 Test Speed: MEDIUM
 Temperature:25.3DEG
 Operators:
 Test Date:21 April 2021

g Range: 0 - 180DEG
 g Interval: 0.5DEG
 Test System:EVERFINE GO-SPEX500_V1 SYSTEM V2.0.402
 Humidity:65.0%
 Test Distance:3.010m [K=1.0000]
 Remarks:

ISOCANDELA DIAGRAM

Test:U:120.13V I:0.0305A P:3.5848W PF:0.9791 Freq:59.98Hz Lamp Flux:198.313x1 lm		
NAME: ASD-UCB-9D3CC-WH-4000K	TYPE:0	WEIGHT:
SPEC.:3W	DIM.:	SERIAL No.:
MFR.: ASD Lighting Corp	SUR.:	Shielding Angle:



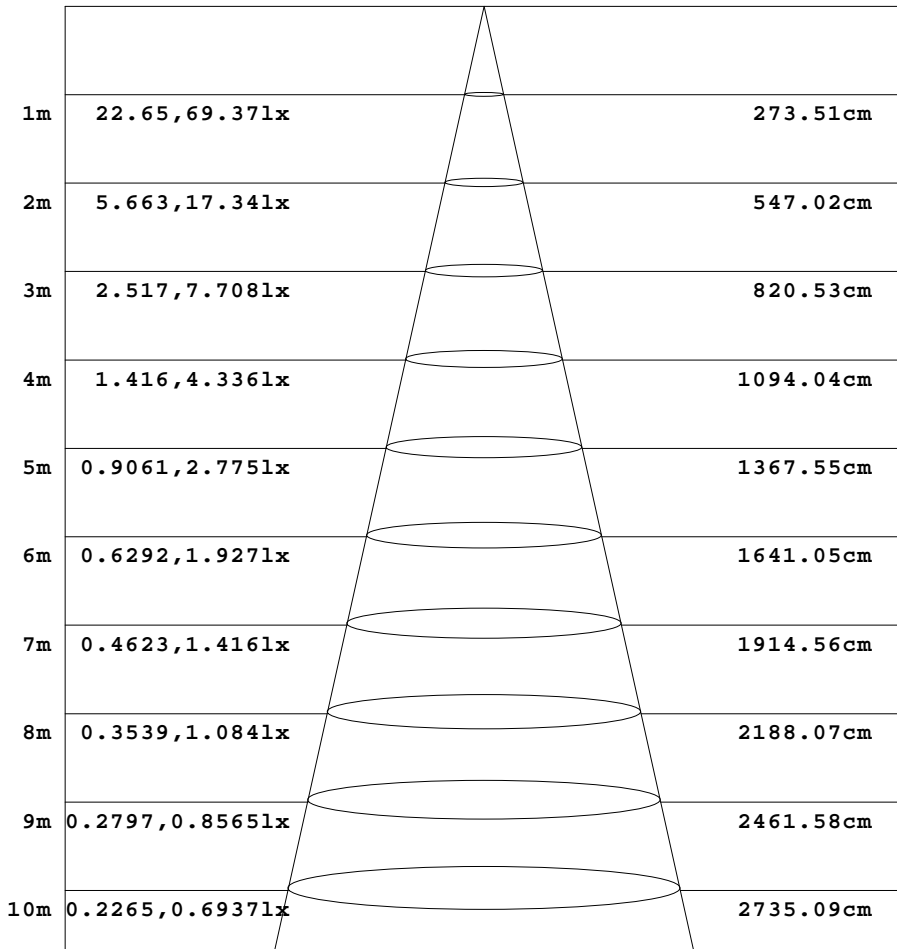
C Range: 0 - 360DEG
 C Interval: 15.0DEG
 Test Speed: MEDIUM
 Temperature:25.3DEG
 Operators:
 Test Date:21 April 2021

g Range: 0 - 180DEG
 g Interval: 0.5DEG
 Test System:EVERFINE GO-SPEX500_V1 SYSTEM V2.0.402
 Humidity:65.0%
 Test Distance:3.010m [K=1.0000]
 Remarks:

AAI Figure

Test:U:120.13V I:0.0305A P:3.5848W PF:0.9791 Freq:59.98Hz Lamp Flux:198.313x1 lm		
NAME: ASD-UCB-9D3CC-WH-4000K	TYPE:0	WEIGHT:
SPEC.:3W	DIM.:	SERIAL No.:
MFR.: ASD Lighting Corp	SUR.:	Shielding Angle:

Flux out:134.8 lm



Height Eavg, Emax Angle:107.65deg Diameter

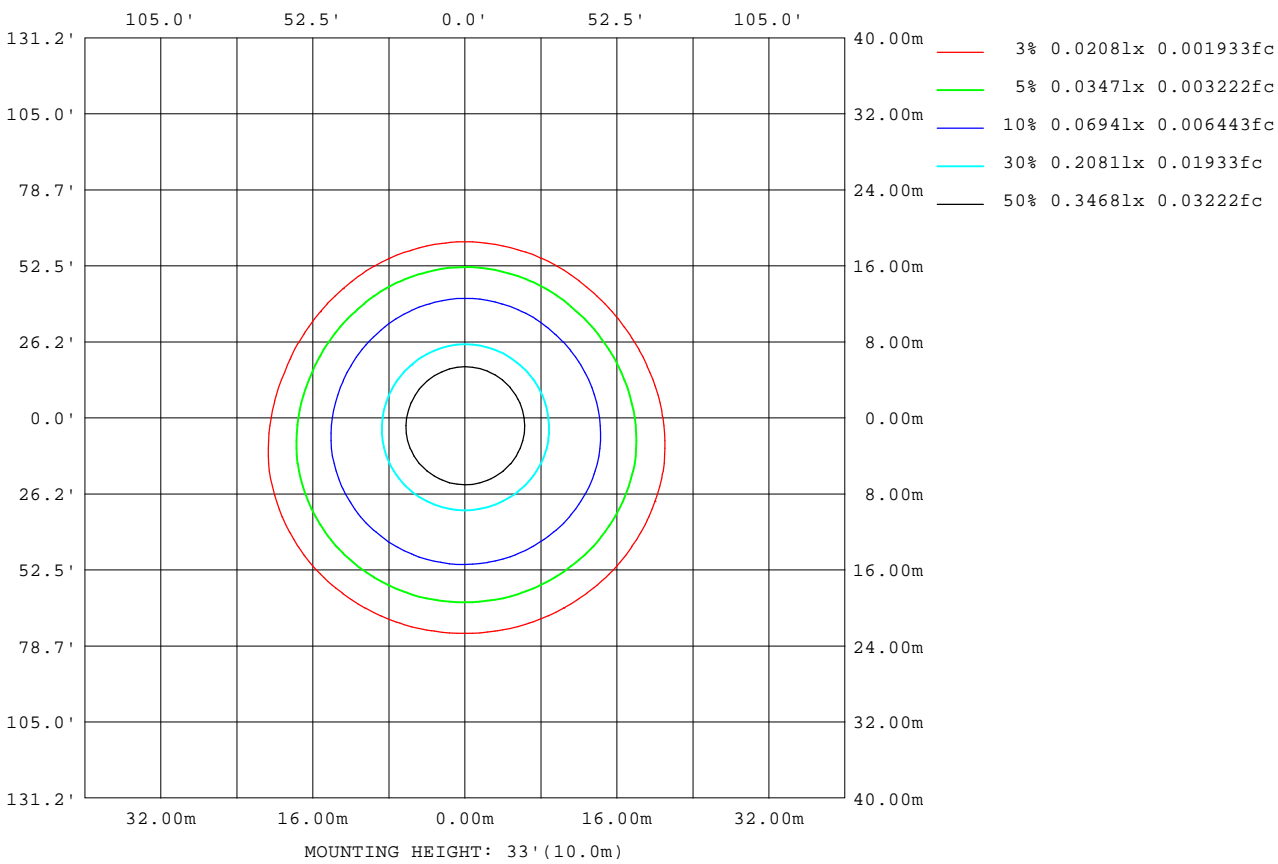
Note:The Curves indicate the illuminated area and the average illumination when the luminaire is at different distance.

C Range: 0 - 360DEG
 C Interval: 15.0DEG
 Test Speed: MEDIUM
 Temperature:25.3DEG
 Operators:
 Test Date:21 April 2021

g Range: 0 - 180DEG
 g Interval: 0.5DEG
 Test System:EVERFINE GO-SPEX500_V1 SYSTEM V2.0.402
 Humidity:65.0%
 Test Distance:3.010m [K=1.0000]
 Remarks:

ISOLUX DIAGRAM

Test:U:120.13V I:0.0305A P:3.5848W PF:0.9791 Freq:59.98Hz Lamp Flux:198.313x1 lm		
NAME: ASD-UCB-9D3CC-WH-4000K	TYPE:0	WEIGHT:
SPEC.:3W	DIM.:	SERIAL No.:
MFR.: ASD Lighting Corp	SUR.:	Shielding Angle:



C Range: 0 - 360DEG
 C Interval: 15.0DEG
 Test Speed: MEDIUM
 Temperature:25.3DEG
 Operators:
 Test Date:21 April 2021

g Range: 0 - 180DEG
 g Interval: 0.5DEG
 Test System:EVERFINE GO-SPEX500_V1 SYSTEM V2.0.402
 Humidity:65.0%
 Test Distance:3.010m [K=1.0000]
 Remarks:

LED Avg.L Report

Test:U:120.13V I:0.0305A P:3.5848W PF:0.9791 Freq:59.98Hz Lamp Flux:198.313x1 lm		
NAME: ASD-UCB-9D3CC-WH-4000K	TYPE:0	WEIGHT:
SPEC.:3W	DIM.:	SERIAL No.:
MFR.: ASD Lighting Corp	SUR.:	Shielding Angle:

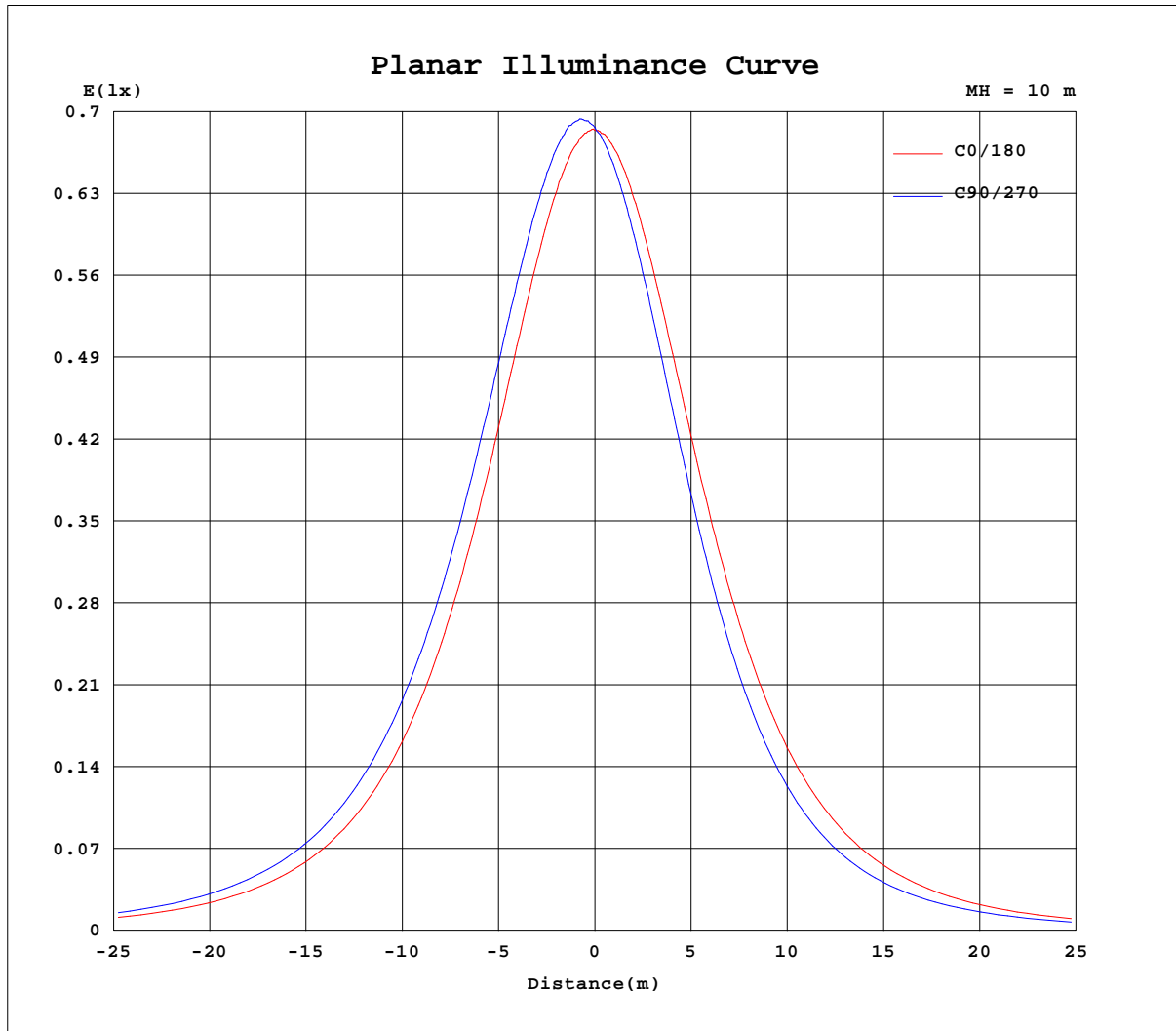
AvgL	cd/m2
L_0~180(65)av	114
L_0~180(75)av	95
L_0~180(85)av	37
L_90~270(65)av	118
L_90~270(75)av	111
L_90~270(85)av	133
L_45(65)av	115
L_45(75)av	107
L_45(85)av	106

Standard: GB/T 29293-2012

C Range: 0 - 360DEG
 C Interval: 15.0DEG
 Test Speed: MEDIUM
 Temperature:25.3DEG
 Operators:
 Test Date:21 April 2021

g Range: 0 - 180DEG
 g Interval: 0.5DEG
 Test System:EVERFINE GO-SPEX500_V1 SYSTEM V2.0.402
 Humidity:65.0%
 Test Distance:3.010m [K=1.0000]
 Remarks:

Planar Illuminance Curve



C Range: 0 - 360DEG
 C Interval: 15.0DEG
 Test Speed: MEDIUM
 Temperature: 25.3DEG
 Operators:
 Test Date: 21 April 2021

g Range: 0 - 180DEG
 g Interval: 0.5DEG
 Test System: EVERFINE GO-SPEX500_V1 SYSTEM V2.0.402
 Humidity: 65.0%
 Test Distance: 3.010m [K=1.0000]
 Remarks:

LUMINOUS DISTRIBUTION INTENSITY DATA

Test:U:120.13V I:0.0305A P:3.5848W PF:0.9791 Freq:59.98Hz Lamp Flux:198.313x1 lm		
NAME: ASD-UCB-9D3CC-WH-4000K	TYPE:0	WEIGHT:
SPEC.:3W	DIM.:	SERIAL No.:
MFR.: ASD Lighting Corp	SUR.:	Shielding Angle:

Table--1

UNIT: cd

C(DEG) g (DEG)	0	15	30	45	60	75	90	105	120	135	150	165	180	195	210	225	240	255	270
0	68.6	68.6	68.6	68.6	68.6	68.6	68.6	68.6	68.6	68.6	68.6	68.6	68.6	68.6	68.6	68.6	68.6	68.6	68.6
5	68.3	68.8	69.2	69.5	69.8	69.9	70.0	69.9	69.7	69.4	69.0	68.6	68.2	67.6	67.3	67.0	66.8	66.5	66.6
10	67.5	68.3	69.2	70.0	70.3	70.6	70.8	70.5	70.2	69.7	68.8	68.0	67.2	66.1	65.5	64.8	64.4	64.1	64.0
15	66.0	67.2	68.4	69.5	70.1	70.6	70.6	70.4	69.9	69.1	68.0	66.8	65.4	64.0	63.0	62.0	61.4	60.9	61.0
20	63.9	65.5	67.1	68.5	69.3	69.8	69.9	69.6	68.9	67.9	66.5	64.9	63.2	61.4	59.9	58.8	58.0	57.4	57.4
25	61.1	63.4	65.0	66.7	67.6	68.4	68.4	68.1	67.3	66.0	64.3	62.4	60.3	58.2	56.5	55.1	54.1	53.4	53.4
30	58.1	60.4	62.5	64.3	65.4	66.2	66.2	65.9	64.9	63.5	61.6	59.5	57.0	54.5	52.6	50.9	49.9	49.1	49.1
35	54.4	57.1	59.3	61.3	62.4	63.3	63.5	63.1	62.0	60.5	58.3	56.0	53.2	50.4	48.3	46.5	45.3	44.5	44.5
40	50.4	53.3	55.6	57.6	58.8	59.7	59.9	59.6	58.4	56.9	54.6	52.1	49.0	46.0	43.7	41.7	40.5	39.7	39.7
45	45.9	49.0	51.5	53.4	54.4	55.4	55.7	55.5	54.4	52.8	50.3	47.7	44.3	41.1	38.7	36.7	35.6	34.9	34.9
50	41.2	44.4	46.9	48.7	49.6	50.6	50.9	50.7	49.7	48.2	45.8	43.0	39.5	36.1	33.6	31.6	30.7	30.1	30.1
55	36.0	39.4	41.7	43.4	44.3	45.1	45.4	45.4	44.5	43.2	40.7	37.9	34.3	30.7	28.2	26.6	25.8	25.3	25.3
60	30.7	34.1	36.2	37.7	38.5	39.3	39.5	39.5	38.8	37.6	35.3	32.5	28.8	25.2	23.0	21.6	21.1	20.8	20.8
65	25.0	28.3	30.2	31.7	32.5	33.1	33.1	33.2	32.6	31.7	29.6	26.9	23.1	19.6	17.9	16.9	16.8	16.4	16.6
70	19.2	22.2	23.9	25.6	26.2	26.7	26.6	26.7	26.2	25.3	23.5	21.0	17.3	14.1	13.1	12.4	12.6	12.4	12.6
75	13.0	16.0	17.7	19.2	19.6	20.1	19.9	20.0	19.5	18.9	17.2	15.1	11.4	9.09	8.69	8.56	8.79	8.76	8.92
80	6.52	9.66	11.5	12.9	13.3	13.9	13.7	13.7	13.0	12.4	10.2	8.19	5.89	4.92	5.01	5.18	5.47	5.56	5.64
85	1.35	4.48	5.88	7.34	8.20	8.86	8.76	8.54	7.76	6.42	4.80	3.09	1.88	1.87	2.13	2.36	2.67	2.79	2.85
90	0.08	0.90	1.40	1.73	1.86	2.47	2.49	2.25	1.44	1.06	0.93	0.34	0.14	0.19	0.27	0.46	0.74	0.67	0.90
95	0.05	0.06	0.14	1.56	2.14	3.03	3.18	2.58	2.05	0.60	0.07	0.06	0.05	0.07	0.08	0.09	0.10	0.11	0.11
100	0.09	0.08	0.37	0.67	0.63	0.79	0.84	0.67	0.32	0.49	0.12	0.08	0.11	0.11	0.12	0.12	0.13	0.14	0.15
105	0.17	0.12	0.25	0.60	0.82	1.17	1.21	0.96	0.35	0.32	0.10	0.15	0.16	0.16	0.16	0.16	0.17	0.17	0.17
110	0.22	0.20	0.16	0.36	0.54	0.67	0.68	0.56	0.21	0.20	0.14	0.21	0.20	0.19	0.19	0.19	0.20	0.21	0.21
115	0.27	0.27	0.17	0.20	0.32	0.40	0.37	0.33	0.17	0.16	0.23	0.24	0.22	0.22	0.22	0.21	0.23	0.23	0.23
120	0.31	0.31	0.17	0.20	0.20	0.24	0.23	0.21	0.17	0.22	0.30	0.27	0.24	0.24	0.24	0.22	0.24	0.25	0.26
125	0.33	0.34	0.22	0.28	0.23	0.23	0.21	0.22	0.24	0.31	0.22	0.30	0.24	0.24	0.24	0.22	0.22	0.26	0.28
130	0.30	0.30	0.19	0.37	0.32	0.28	0.27	0.29	0.33	0.21	0.26	0.27	0.23	0.22	0.22	0.22	0.25	0.27	0.27
135	0.26	0.24	0.20	0.34	0.41	0.38	0.36	0.39	0.43	0.20	0.19	0.23	0.21	0.21	0.21	0.23	0.24	0.23	0.23
140	0.24	0.20	0.21	0.38	0.49	0.48	0.46	0.48	0.48	0.24	0.18	0.19	0.21	0.20	0.21	0.22	0.23	0.24	0.23
145	0.22	0.19	0.21	0.22	0.50	0.53	0.52	0.52	0.48	0.20	0.18	0.18	0.21	0.19	0.20	0.22	0.22	0.24	0.24
150	0.20	0.19	0.20	0.20	0.20	0.50	0.50	0.48	0.20	0.18	0.17	0.22	0.19	0.19	0.18	0.22	0.20	0.22	0.23
155	0.19	0.25	0.18	0.19	0.20	0.20	0.19	0.19	0.18	0.17	0.23	0.23	0.18	0.17	0.17	0.17	0.18	0.20	0.20
160	0.18	0.27	0.26	0.17	0.23	0.19	0.17	0.24	0.19	0.15	0.24	0.20	0.16	0.16	0.16	0.14	0.16	0.18	0.17
165	0.16	0.23	0.26	0.27	0.24	0.27	0.27	0.27	0.23	0.24	0.23	0.16	0.14	0.14	0.13	0.13	0.14	0.14	0.15
170	0.15	0.19	0.24	0.22	0.17	0.19	0.19	0.16	0.16	0.17	0.18	0.14	0.14	0.14	0.13	0.11	0.13	0.14	0.14
175	0.15	0.16	0.18	0.20	0.19	0.21	0.20	0.20	0.18	0.16	0.14	0.14	0.14	0.13	0.13	0.13	0.14	0.14	0.14
180	0.16	0.16	0.17	0.17	0.16	0.16	0.16	0.15	0.16	0.17	0.16	0.16	0.16	0.16	0.17	0.17	0.16	0.16	0.16

C Range: 0 - 360DEG

C Interval: 15.0DEG

Test Speed: MEDIUM

Temperature:25.3DEG

Operators:

Test Date:21 April 2021

g Range: 0 - 180DEG

g Interval: 0.5DEG

Test System:EVERFINE GO-SPEX500_V1 SYSTEM V2.0.402

Humidity:65.0%

Test Distance:3.010m [K=1.0000]

Remarks:

LUMINOUS DISTRIBUTION INTENSITY DATA

Test:U:120.13V I:0.0305A P:3.5848W PF:0.9791 Freq:59.98Hz Lamp Flux:198.313x1 lm		
NAME: ASD-UCB-9D3CC-WH-4000K	TYPE:0	WEIGHT:
SPEC.:3W	DIM.:	SERIAL No.:
MFR.: ASD Lighting Corp	SUR.:	Shielding Angle:

Table--2

UNIT: cd

C(DEG) g (DEG)	285	300	315	330	345																
0	68.6	68.6	68.6	68.6	68.6																
5	66.7	66.9	67.2	67.5	67.9																
10	64.1	64.5	65.1	65.8	66.6																
15	61.1	61.7	62.5	63.5	64.6																
20	57.6	58.3	59.3	60.7	62.2																
25	53.7	54.7	55.7	57.3	59.1																
30	49.4	50.4	51.7	53.5	55.7																
35	44.8	45.9	47.3	49.3	51.7																
40	40.0	41.1	42.6	44.8	47.4																
45	35.1	36.1	37.6	39.9	42.7																
50	30.3	31.1	32.5	34.8	37.7																
55	25.5	26.2	27.3	29.5	32.5																
60	20.9	21.4	22.2	24.1	27.0																
65	16.5	16.9	17.3	18.8	21.3																
70	12.4	12.6	12.6	13.7	15.6																
75	8.74	8.78	8.59	8.97	10.1																
80	5.52	5.40	5.11	5.03	5.40																
85	2.70	2.57	2.28	2.09	1.88																
90	0.75	0.74	0.50	0.39	0.24																
95	0.11	0.12	0.12	0.08	0.08																
100	0.13	0.13	0.16	0.11	0.12																
105	0.17	0.17	0.19	0.16	0.17																
110	0.20	0.19	0.22	0.19	0.20																
115	0.23	0.23	0.24	0.22	0.22																
120	0.25	0.23	0.25	0.25	0.24																
125	0.24	0.24	0.25	0.25	0.25																
130	0.27	0.25	0.24	0.23	0.23																
135	0.24	0.26	0.23	0.22	0.22																
140	0.23	0.26	0.22	0.21	0.21																
145	0.23	0.23	0.22	0.20	0.20																
150	0.23	0.23	0.22	0.20	0.20																
155	0.21	0.19	0.18	0.19	0.19																
160	0.18	0.17	0.17	0.17	0.17																
165	0.15	0.15	0.15	0.16	0.16																
170	0.14	0.14	0.15	0.16	0.16																
175	0.14	0.14	0.14	0.15	0.16																
180	0.15	0.16	0.17	0.17	0.16																

C Range: 0 - 360DEG

C Interval: 15.0DEG

Test Speed: MEDIUM

Temperature:25.3DEG

Operators:

Test Date:21 April 2021

g Range: 0 - 180DEG

g Interval: 0.5DEG

Test System:EVERFINE GO-SPEX500_V1 SYSTEM V2.0.402

Humidity:65.0%

Test Distance:3.010m [K=1.0000]

Remarks: