



# LED OUTDOOR WALL SCONCE

► **DESIGN** - LED OUTDOOR WALL SCONCE has a modern, multipurpose design and a sleek look with multidirectional illumination. The clear seeded glass shade with a 245° beam angle filled with air bubbles emits a luxurious glow. It is designed to operate on 120V or 120-277V circuits and provides smooth triac dimming capabilities ranging from 10% to 100%.

► **COLOR SELECTABLE** - You can choose either a 3,000K warm white, 4,000K cool white or 5,000K daylight color temperature.

► Durable waterproof housing resistant to rust and impact can be used outdoors in all weather conditions.

► **APPLICATION** - The fixture is rated for Wet Locations, making it perfect for indoor and outdoor projects such as decks, front doors, porches, patios, corridors, walkways, or any other common areas.

► **ADVANTAGES** - With a lifespan of 50,000 hours, these fixtures are made to last decades under normal operation! ASD provides a 5-year limited warranty along with ETL certification to guarantee top quality products and safety!

<i>Catalog number</i>	
<i>Notes</i>	
<i>Type</i>	



Model	Size	Watts	Voltage	Dimmable	Lumens	CCT	Finish	Dimensions (LxWxH)
ASD-LWS28S-12D22CC-BK	12 inch	22W	120 V	TRIAC	439/485/453 lm	3CCT (3,000/4,000/5,000 K)	Black	5-1/2" x 2-3/16" x 11-13/16"
ASD-LWS28S-MV-18D22CC-BK	18 inch	22W	120-277 V	TRIAC	450/520/496 lm	3CCT (3,000/4,000/5,000 K)	Black	5-1/2" x 2-3/16" x 18-1/8"
ASD-LWS28S-MV-24D22CC-BK	24 inch	22W	120-277 V	TRIAC	458/531/504 lm	3CCT (3,000/4,000/5,000 K)	Black	5-1/2" x 2-3/16" x 24"

## PRODUCT SPECIFICATIONS:

Construction & Materials			Electrical system		
Housing	Aluminium		Input voltage	120 V for MV models: 120-277 V	
Lens	Clear seeded glass		Max input current	0.25 A for MV models: 0.2 A	
Finish	Black		Inrush current (Action time)	0.2 A (1 S) for MV models: 0.18 A (0.1 S)	
Weight	ASD-LWS28S-12D22CC-BK	4.4 lbs (2 kg)	Off state power	0W	
	ASD-LWS28S-MV-18D22CC-BK	7.3 lbs (3.3 kg)	Power consumption	22W	
	ASD-LWS28S-MV-24D22CC-BK	9.7 lbs (4.4 kg)	Power factor	> 0.9	
Environmental system			Output voltage	36 V for MV models: 18-40 V	
Work environment	Suitable for Wet Locations		Max output current	0.52 A	
Operating temperature	-40°F to 113°F (-40°C to 45°C)		Surge protection DM/CM	2.5 kV / 2.5 kV for MV models: 1.25 kV / 1.25 kV	
L-70 Life	> 50,000 hrs		Dimming compatible controls		
Optical system			Brand	Lutron	Leviton
Luminous flux	ASD-LWS28S-12D22CC-BK	439/485/453 lm	Models	MACL-153MLH-WH	R02-DW6HD-2RW
	ASD-LWS28S-MV-18D22CC-BK	450/520/496 lm		STCL-153PH-WH	R00-RNL06-0TW
	ASD-LWS28S-MV-24D22CC-BK	458/531/504 lm		PD-6WCL-WH-R	R68-06674-P0T
Color temperature	3CCT switch (3,000/4,000/5,000 K), 3,000 K by default			DVCL-153PR	DSL06
CRI	> 80			P-PKG1W	
Dimming range					
10-100%					
Regular and voluntary certifications					
5-year limited warranty					
cETLus certified 4001256					

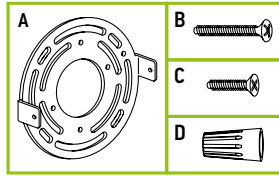
For most up-to-date spec sheets please refer to [asd-lighting.com](http://asd-lighting.com)



# LED OUTDOOR WALL SCENCE

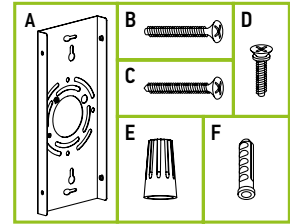
## PACKAGE CONTENTS FOR 12" MODEL:

Description	Q-ty
LED Outdoor Wall Sconce	1
Mounting plate (A)	1
Mounting screw (B)	2
Black screw (C)	2
Wire nut (D)	3
Box	1



## PACKAGE CONTENTS FOR 18-24" MODELS:

Description	Q-ty
LED Outdoor Wall Sconce	1
Mounting plate (A)	1
Mounting screw (B)	2
Self-tapping screw (C)	2
Black screw (D)	4
Wire nut (E)	3
Anchor (F)	2
Box	1



## INSTALLATION GUIDE

### IMPORTANT SAFETY INFORMATION:

Please read all the instructions below before installation.

- ▶ Make sure that the supply voltage corresponds to the rated product voltage.
- ▶ The product must be installed by a qualified electrician in accordance with the National Electrical Code and corresponding local codes.
- ▶ If the product is damaged, do not use it.

### ⚠ WARNING

**RISK OF PERSONAL INJURY – READ and follow all WARNINGS and installation instructions.** Keep or give to the owner for future reference.

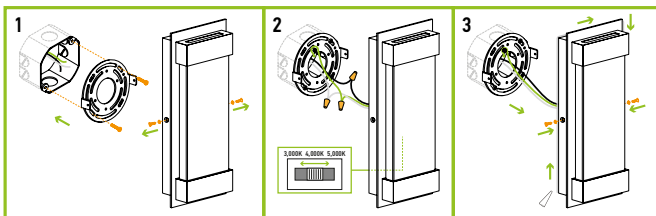
**Risk of cuts:** Wear gloves to prevent cuts or abrasions when removing from carton, handling, installing, and maintaining this product.

**Risk of electric shock:** This product must be installed in accordance with the applicable installation code by a person familiar with the construction and operation of the product and the hazards involved.

**Risk of Fire:** Minimum 194°F supply conductors. Consult a qualified electrician to ensure correct branch circuit conductor.  
 ASD® assumes no responsibility for claims arising out of improper or careless installation or handling of this product.

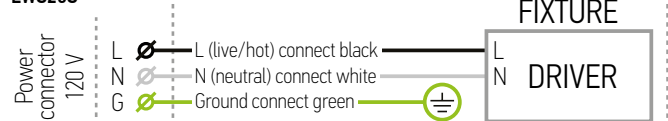
### INSTALLATION STEPS FOR MODEL 12":

1. Unscrew the fixture screws from both sides of the wall sconce. Remove the mounting plate and attach it to the existing outlet box using two mounting screws.
2. Choose preferred color temperature by adjusting switch position. Connect the wires: Black to Black, White to White, Green to Green. Secure the connection with wire nuts.
3. Fix the wall sconce to the mounting plate using fixture screws on both sides. Before tightening the screws, align the holes of both the fixture and the mounting plate to ensure a solid fit. For outdoor locations please use silicone (not included) shown in the picture below.

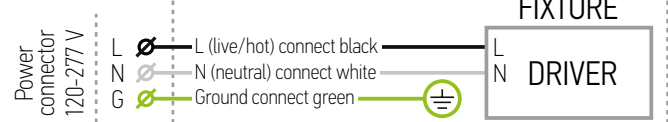


### ELECTRICAL SCHEMATIC DIAGRAM:

#### LWS28S

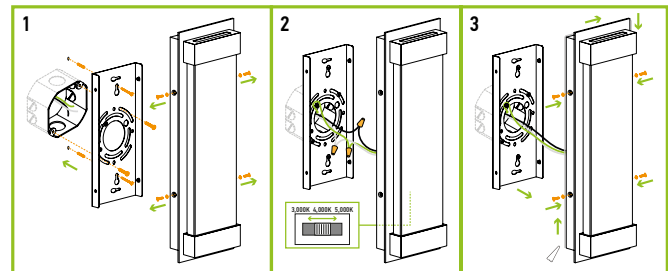


#### LWS28S-MV



### INSTALLATION STEPS FOR MODELS 18-24":

1. Unscrew four fixture screws from both sides of the wall sconce. Remove the mounting plate and attach it to the existing outlet box using two mounting screws. Secure the mounting plate to the wall, using two anchors and two screws.
2. Choose preferred color temperature by adjusting switch position. Connect the wires: Black to Black, White to White, Green to Green. Secure the connection with wire nuts.
3. Fix the wall sconce to the mounting plate using four fixture screws on both sides. Before tightening the screws, align the holes of both the fixture and the mounting plate to ensure a solid fit. For outdoor locations please use silicone (not included) shown in the picture below.



## ORDERING INFORMATION

Model	UPC	Pcs. per carton	Carton size	Carton weight	GTIN 14
ASD-LWS28S-12D22CC-BK	810050739368	4	15.2" x 8.9" x 14.4"	23.1 lbs	10810050739365
ASD-LWS28S-MV-18D22CC-BK	810128112604	2	20.9" x 8.3" x 9.7"	16.9 lbs	10810128112601
ASD-LWS28S-MV-24D22CC-BK	810128112611	2	26.8" x 8.3" x 9.7"	22.1 lbs	10810128112618

For most up-to-date spec sheets please refer to [asd-lighting.com](http://asd-lighting.com)