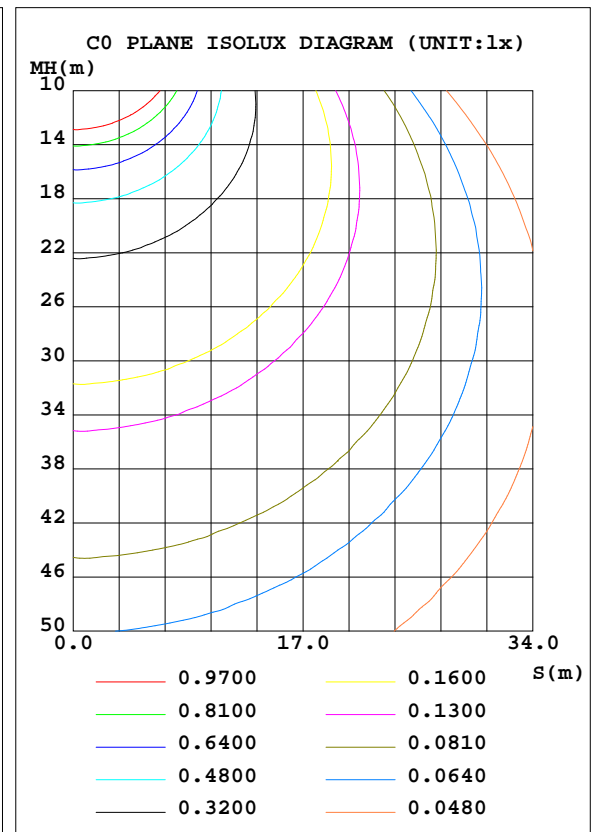
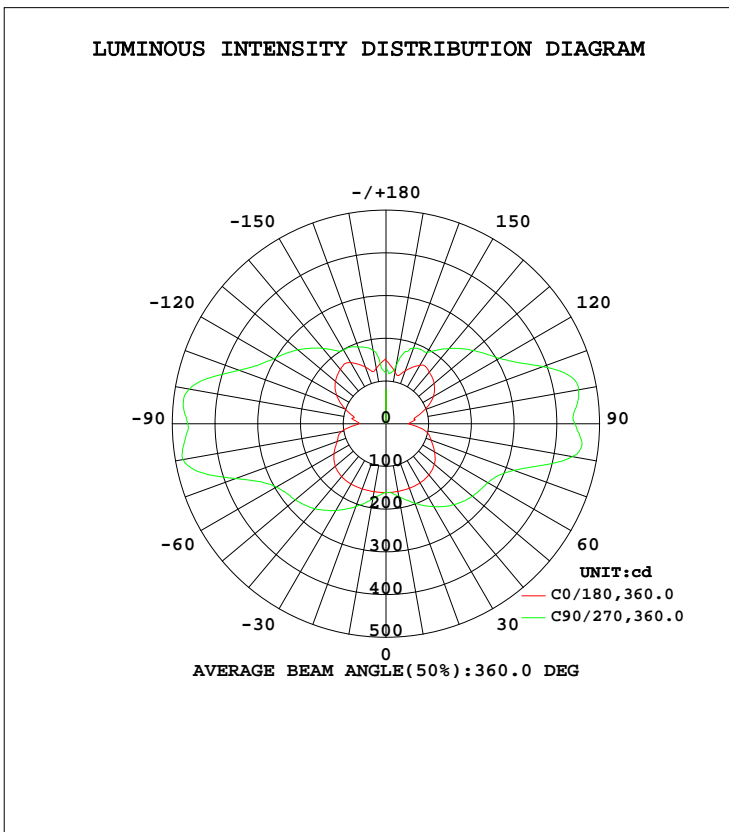


LUMINAIRE PHOTOMETRIC TEST REPORT

Test:U:120.1V I:0.2736A P:32.21W PF:0.9804 Lamp Flux:2844.13x1 lm		
NAME: ASD-LWS27-48D36CC 4000K	TYPE:N/A	WEIGHT:N/A
SPEC.:N/A	DIM.: N/A	SERIAL No.:N/A
MFR.: ASD Lighting corp	SUR.:N/A	Shielding Angle:N/A

DATA OF LAMP		PHOTOMETRIC DATA Eff: 88.30 lm/W			
MODEL	PSZ2S220624004-10	I _{max} (cd)	483.5	S/MH(C0/180)	1.51
NOMINAL POWER(W)		LOR(%)	100.0	S/MH(C90/270)	2.18
RATED VOLTAGE(V)	120	TOTAL FLUX(lm)	2844.1	η UP, DN(C0-180)	24.6,26.3
NOMINAL FLUX(lm)	2844.13	CIE CLASS	DIFFUSE	η UP, DN(C180-360)	24.4,24.8
LAMPS INSIDE	1	η up(%)	48.9	CIBSE SHR NOM	2.00
TEST VOLTAGE(V)	120	η down(%)	51.1	CIBSE SHR MAX	0.00



C Range: 0 - 360DEG
 C Interval: 22.5DEG
 Test Speed: HIGH
 Temperature:25.8DEG
 Operators:Carl
 Test Date:2022-06-24

γ Range: 0 - 180DEG
 γ Interval: 1.0DEG
 Test System:EVERFINE GO-R5000_V2 SYSTEM V2.0.351
 Humidity:42%
 Test Distance:2.526m [K=1.0000]
 Remarks:

ZONAL FLUX DIAGRAM

ZONAL FLUX DIAGRAM:

γ	C0	C45	C90	C135	C180	C225	C270	C315	γ	Φ zone	Φ total	%lum, lamp
10	161.6	172.3	179.0	172.3	161.0	166.4	172.9	167.4	0- 10	15.77	15.77	0.55,0.55
20	162.5	190.2	206.1	189.0	160.9	181.3	197.8	184.0	10- 20	50.20	65.97	2.32,2.32
30	162.8	209.9	234.7	207.2	160.0	197.6	224.4	202.7	20- 30	89.23	155.2	5.46,5.46
40	161.6	226.8	259.6	221.6	156.2	211.8	247.4	219.2	30- 40	130.5	285.7	10,10
50	154.8	237.1	277.3	230.7	147.8	219.5	263.8	229.9	40- 50	169.1	454.8	16,16
60	140.6	238.7	296.5	231.8	131.3	219.6	275.7	232.1	50- 60	199.4	654.2	23,23
70	121.9	248.0	375.3	243.5	112.5	220.4	318.7	236.5	60- 70	225.7	879.9	30.9,30.9
80	105.5	282.4	482.4	280.8	92.67	248.7	443.4	273.1	70- 80	274.2	1154	40.6,40.6
90	64.72	265.7	464.3	266.6	52.94	246.4	442.0	269.6	80- 90	297.9	1452	51.1,51.1
100	78.51	268.2	467.2	270.4	66.35	259.2	457.6	279.9	90-100	293.0	1745	61.4,61.4
110	101.9	237.1	365.9	235.7	96.56	233.5	391.0	247.8	100-110	272.8	2018	70.9,70.9
120	133.4	220.7	304.5	217.7	128.1	213.9	306.7	222.8	110-120	224.7	2242	78.8,78.8
130	154.5	204.9	269.3	202.2	147.1	200.2	267.1	206.9	120-130	189.4	2432	85.5,85.5
140	166.7	190.8	230.1	184.1	158.1	180.4	230.3	188.0	130-140	154.6	2587	90.9,90.9
150	165.6	191.8	199.6	186.9	158.3	179.4	193.0	189.6	140-150	117.6	2704	95.1,95.1
160	140.9	181.8	191.3	170.1	131.8	138.6	188.2	186.9	150-160	81.85	2786	98,98
170	131.8	166.5	173.9	126.7	123.8	127.7	137.8	172.9	160-170	44.60	2831	99.5,99.5
180	152.1	148.4	118.7	139.1	148.0	146.2	133.0	124.4	170-180	13.59	2844	100,100
DEG	LUMINOUS INTENSITY:cd									UNIT:lm		

Conical surface Flux(90deg): 365.83 lm

%lum = 12.9%
%lamp = 12.9%

Conical surface Flux(120deg): 654.18 lm

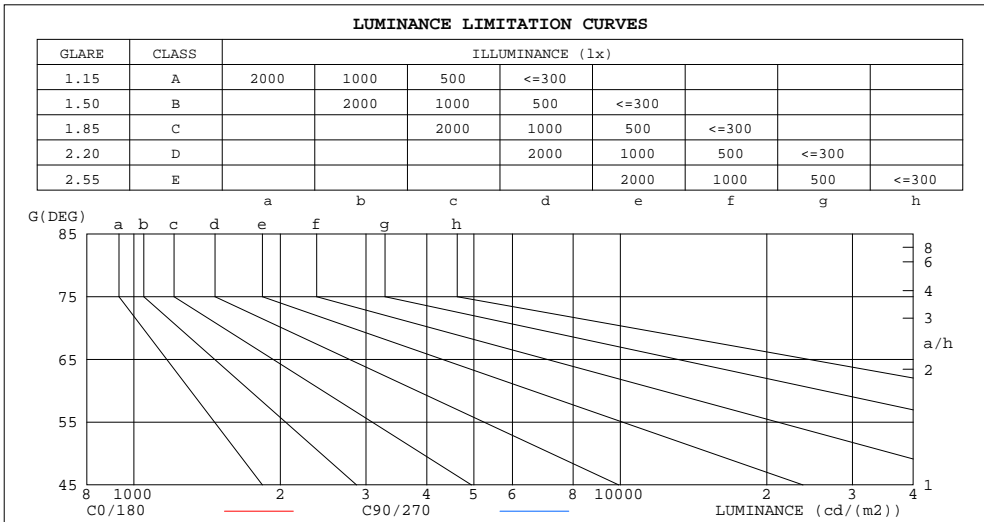
%lum = 23.0%
%lamp = 23.0%

C Range: 0 - 360DEG
C Interval: 22.5DEG
Test Speed: HIGH
Temperature:25.8DEG
Operators:Carl
Test Date:2022-06-24

γ Range: 0 - 180DEG
γ Interval: 1.0DEG
Test System:EVERFINE GO-R5000_V2 SYSTEM V2.0.351
Humidity:42%
Test Distance:2.526m [K=1.0000]
Remarks:

LUMINANCE LIMITATION CURVES

Test:U:120.1V I:0.2736A P:32.21W PF:0.9804 Lamp Flux:2844.13x1 lm		
NAME: ASD-LWS27-48D36CC 4000K	TYPE:N/A	WEIGHT:N/A
SPEC.:N/A	DIM.: N/A	SERIAL No.:N/A
MFR.: ASD Lighting corp	SUR.:N/A	Shielding Angle:N/A



LUMINANCE cd/(m2)		
G (DEG)	C0/180	C90/270
85	348287	1977692
80	221082	1012350
75	163252	626108
70	129652	399917
65	113085	277769
60	102274	216118
55	94226	180465
50	87618	157219
45	81821	138637

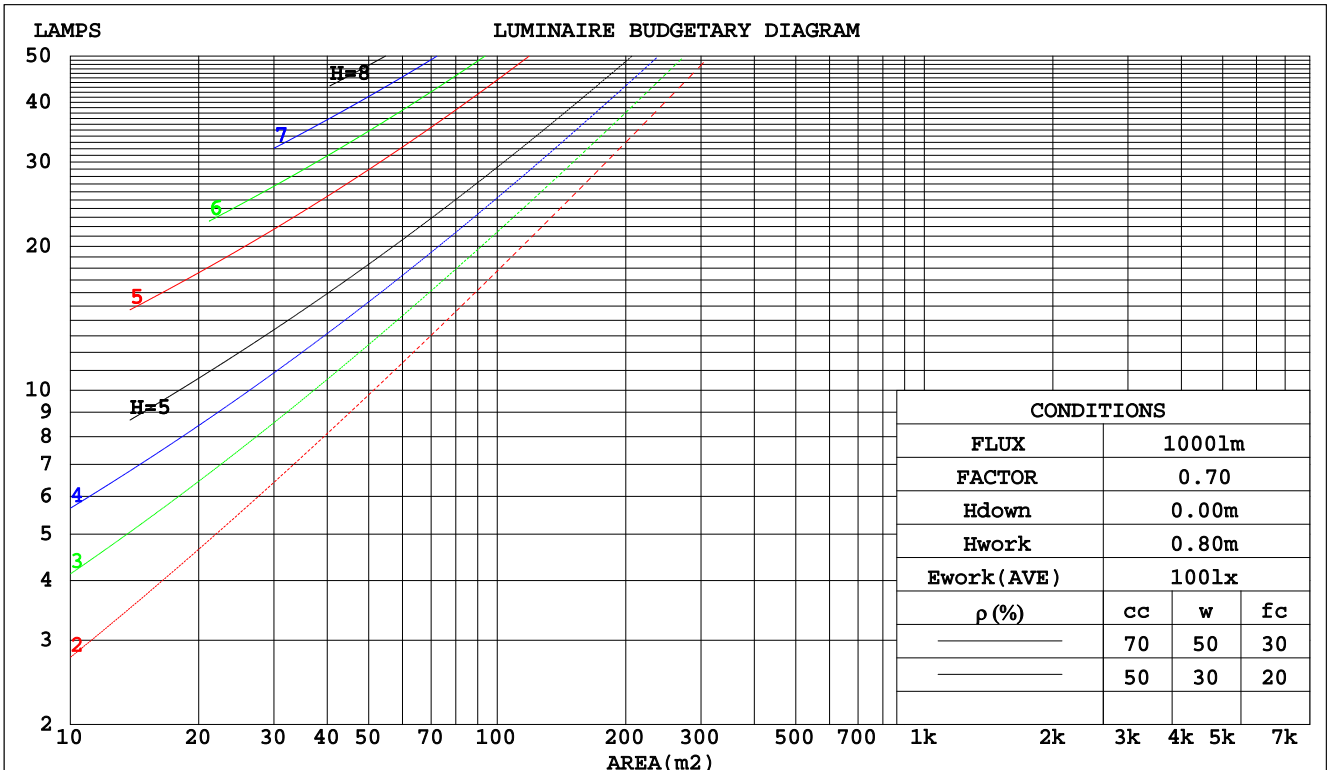
C Range: 0 - 360DEG
 C Interval: 22.5DEG
 Test Speed: HIGH
 Temperature:25.8DEG
 Operators:Carl
 Test Date:2022-06-24

γ Range: 0 - 180DEG
 γ Interval: 1.0DEG
 Test System:EVERFINE GO-R5000_V2 SYSTEM V2.0.351
 Humidity:42%
 Test Distance:2.526m [K=1.0000]
 Remarks:

CU AND LUMINAIRE BUDGETARY ESTIMATE DIAGRAM

Test:U:120.1V I:0.2736A P:32.21W PF:0.9804 Lamp Flux:2844.13x1 lm		
NAME: ASD-LWS27-48D36CC 4000K	TYPE:N/A	WEIGHT:N/A
SPEC.:N/A	DIM.: N/A	SERIAL No.:N/A
MFR.: ASD Lighting corp	SUR.:N/A	Shielding Angle:N/A

pcc	80%			70%			50%			30%			10%			0
	50%	30%	10%	50%	30%	10%	50%	30%	10%	50%	30%	10%	50%	30%	10%	0
pw																0
pfc	20%			20%			20%			20%			20%			0
RCR	RCR:Room Cavity Ratio						Coefficients of Utilization(CU)									
0.0	1.07	1.07	1.07	.99	.99	.99	.84	.84	.84	.70	.70	.70	.57	.57	.57	.51
1.0	.86	.81	.75	.79	.74	.69	.66	.62	.58	.54	.51	.48	.42	.40	.38	.32
2.0	.73	.65	.58	.67	.59	.53	.55	.50	.45	.44	.40	.36	.35	.31	.29	.24
3.0	.63	.53	.46	.57	.49	.43	.47	.41	.36	.38	.33	.29	.29	.26	.22	.18
4.0	.55	.45	.38	.50	.41	.35	.41	.34	.29	.33	.28	.24	.25	.21	.18	.14
5.0	.48	.39	.32	.44	.35	.29	.36	.30	.24	.29	.24	.20	.22	.18	.15	.12
6.0	.43	.33	.27	.39	.31	.25	.32	.26	.21	.26	.21	.17	.20	.16	.13	.10
7.0	.38	.29	.23	.35	.27	.21	.29	.23	.18	.23	.18	.14	.18	.14	.11	.08
8.0	.34	.26	.20	.32	.24	.19	.26	.20	.16	.21	.16	.13	.17	.13	.10	.07
9.0	.31	.23	.18	.29	.21	.16	.24	.18	.14	.20	.15	.11	.15	.11	.09	.06
10.0	.29	.21	.16	.26	.19	.14	.22	.16	.12	.18	.13	.10	.14	.10	.08	.06



C Range: 0 - 360DEG
 C Interval: 22.5DEG
 Test Speed: HIGH
 Temperature:25.8DEG
 Operators:Carl
 Test Date:2022-06-24

γ Range: 0 - 180DEG
 γ Interval: 1.0DEG
 Test System:EVERFINE GO-R5000_V2 SYSTEM V2.0.351
 Humidity:42%
 Test Distance:2.526m [K=1.0000]
 Remarks:

WEC AND CCEC

Test:U:120.1V I:0.2736A P:32.21W PF:0.9804 Lamp Flux:2844.13x1 lm		
NAME: ASD-LWS27-48D36CC 4000K	TYPE:N/A	WEIGHT:N/A
SPEC.:N/A	DIM.: N/A	SERIAL No.:N/A
MFR.: ASD Lighting corp	SUR.:N/A	Shielding Angle:N/A

ρcc	80%			70%			50%			30%			10%			0
ρw	50%	30%	10%	50%	30%	10%	50%	30%	10%	50%	30%	10%	50%	30%	10%	0
ρfc	20%			20%			20%			20%			20%			0
RCR	RCR:Room Cavity Ratio						Wall Exitance Coefficients(WEC)									
0.0																
1.0	.420	.239	.076	.398	.227	.072	.356	.204	.065	.318	.184	.059	.283	.164	.053	
2.0	.347	.190	.058	.327	.180	.055	.289	.161	.050	.254	.143	.045	.222	.125	.040	
3.0	.301	.160	.048	.283	.152	.046	.248	.135	.041	.216	.118	.036	.186	.103	.032	
4.0	.268	.139	.041	.251	.131	.039	.219	.116	.035	.189	.102	.031	.162	.088	.027	
5.0	.241	.123	.036	.225	.116	.034	.196	.102	.030	.169	.089	.027	.144	.077	.023	
6.0	.219	.110	.031	.205	.104	.030	.178	.091	.027	.153	.079	.023	.129	.068	.020	
7.0	.201	.100	.028	.188	.094	.027	.163	.083	.024	.140	.072	.021	.118	.061	.018	
8.0	.186	.091	.026	.174	.086	.024	.151	.075	.021	.129	.065	.019	.108	.056	.016	
9.0	.173	.084	.023	.162	.079	.022	.140	.069	.020	.120	.060	.017	.100	.051	.015	
10.0	.161	.077	.021	.151	.073	.020	.131	.064	.018	.112	.055	.016	.094	.047	.014	

ρcc	80%			70%			50%			30%			10%			0
ρw	50%	30%	10%	50%	30%	10%	50%	30%	10%	50%	30%	10%	50%	30%	10%	0
ρfc	20%			20%			20%			20%			20%			0
RCR	RCR:Room Cavity Ratio						Ceiling Cavity Exitance Coefficients(CCEC)									
0.0	.563	.563	.563	.482	.482	.482	.329	.329	.329	.189	.189	.189	.060	.060	.060	
1.0	.564	.531	.502	.483	.456	.432	.330	.314	.299	.190	.181	.174	.061	.058	.056	
2.0	.558	.510	.470	.478	.439	.406	.328	.304	.283	.189	.177	.166	.061	.057	.054	
3.0	.551	.495	.450	.472	.427	.391	.324	.297	.274	.187	.173	.161	.060	.056	.053	
4.0	.544	.484	.438	.466	.418	.380	.321	.291	.268	.186	.171	.158	.060	.056	.052	
5.0	.536	.475	.429	.460	.411	.373	.317	.287	.264	.184	.168	.156	.059	.055	.052	
6.0	.529	.467	.423	.455	.405	.368	.314	.283	.261	.182	.167	.155	.059	.054	.051	
7.0	.522	.461	.419	.449	.400	.365	.310	.280	.258	.180	.165	.154	.058	.054	.051	
8.0	.516	.456	.415	.444	.396	.362	.307	.278	.257	.179	.164	.153	.058	.054	.051	
9.0	.509	.452	.412	.439	.392	.360	.304	.275	.255	.177	.163	.152	.057	.053	.050	
10.0	.504	.448	.410	.434	.389	.358	.301	.274	.254	.176	.162	.152	.057	.053	.050	

C Range: 0 - 360DEG
 C Interval: 22.5DEG
 Test Speed: HIGH
 Temperature:25.8DEG
 Operators:Carl
 Test Date:2022-06-24

γ Range: 0 - 180DEG
 γ Interval: 1.0DEG
 Test System:EVERFINE GO-R5000_V2 SYSTEM V2.0.351
 Humidity:42%
 Test Distance:2.526m [K=1.0000]
 Remarks:

UGR(Unified Glare Rating) Table

Test:U:120.1V I:0.2736A P:32.21W PF:0.9804 Lamp Flux:2844.13x1 lm										
NAME: ASD-LWS27-48D36CC 4000K					TYPE:N/A			WEIGHT:N/A		
SPEC.:N/A					DIM.: N/A			SERIAL No.:N/A		
MFR.: ASD Lighting corp					SUR.:N/A			Shielding Angle:N/A		
ceiling/cavity	0.7	0.7	0.5	0.5	0.3	0.7	0.7	0.5	0.5	0.3
walls	0.5	0.3	0.5	0.3	0.3	0.5	0.3	0.5	0.3	0.3
working plane	0.2	0.2	0.2	0.2	0.2	0.2	0.2	0.2	0.2	0.2
Room dimensions	Viewed crosswise					Viewed endwise				
x = 2H y = 2H	25.3	26.4	26.1	27.3	28.4	28.3	29.4	29.2	30.3	31.4
3H	27.7	28.7	28.5	29.6	30.7	32.4	33.4	33.3	34.4	35.5
4H	29.0	29.9	29.9	30.9	32.0	35.1	36.1	36.0	37.0	38.2
6H	30.4	31.3	31.3	32.3	33.5	38.0	38.9	38.9	39.8	41.0
8H	31.2	32.0	32.1	33.0	34.2	39.4	40.3	40.4	41.2	42.5
12H	31.9	32.7	32.8	33.6	34.9	40.9	41.8	41.9	42.7	43.9
4H 2H	27.0	28.0	27.9	28.9	30.1	29.0	29.9	29.9	30.9	32.0
3H	29.6	30.4	30.5	31.4	32.6	33.3	34.2	34.3	35.1	36.3
4H	31.0	31.8	32.0	32.7	34.0	36.2	36.9	37.1	37.9	39.2
6H	32.5	33.2	33.5	34.2	35.5	39.3	39.9	40.2	40.9	42.2
8H	33.3	33.9	34.3	34.9	36.2	40.8	41.4	41.8	42.4	43.7
12H	34.1	34.6	35.0	35.6	36.9	42.4	43.0	43.4	44.0	45.3
8H 4H	32.9	33.5	33.8	34.5	35.8	36.6	37.2	37.5	38.2	39.5
6H	34.6	35.2	35.6	36.2	37.5	39.9	40.5	40.9	41.5	42.8
8H	35.5	36.0	36.5	37.0	38.3	41.7	42.2	42.7	43.2	44.5
12H	36.3	36.8	37.4	37.8	39.1	43.6	44.0	44.6	45.0	46.4
12H 4H	33.7	34.2	34.6	35.2	36.5	36.6	37.2	37.6	38.2	39.5
6H	35.6	36.1	36.6	37.1	38.4	40.0	40.5	41.0	41.5	42.9
8H	36.6	37.0	37.6	38.1	39.4	41.9	42.3	42.9	43.4	44.7
Variations with the observer position at spacings:										
S = 1.0H	+ 0.1 / - 0.1					+ 0.1 / - 0.1				
1.5H	+ 0.2 / - 0.2					+ 0.2 / - 0.3				
2.0H	+ 0.3 / - 0.4					+ 0.3 / - 0.4				

CIE Pub.117 Corrected 2844 lm Total Lamp Luminous Flux.(8log(F/F0) = 3.6)

C Range: 0 - 360DEG
 C Interval: 22.5DEG
 Test Speed: HIGH
 Temperature:25.8DEG
 Operators:Carl
 Test Date:2022-06-24

γ Range: 0 - 180DEG
 γ Interval: 1.0DEG
 Test System:EVERFINE GO-R5000_V2 SYSTEM V2.0.351
 Humidity:42%
 Test Distance:2.526m [K=1.0000]
 Remarks:

UTILIZATION FACTORS TABLE

Test:U:120.1V I:0.2736A P:32.21W PF:0.9804 Lamp Flux:2844.13x1 lm		
NAME: ASD-LWS27-48D36CC 4000K	TYPE:N/A	WEIGHT:N/A
SPEC.:N/A	DIM.: N/A	SERIAL No.:N/A
MFR.: ASD Lighting corp	SUR.:N/A	Shielding Angle:N/A

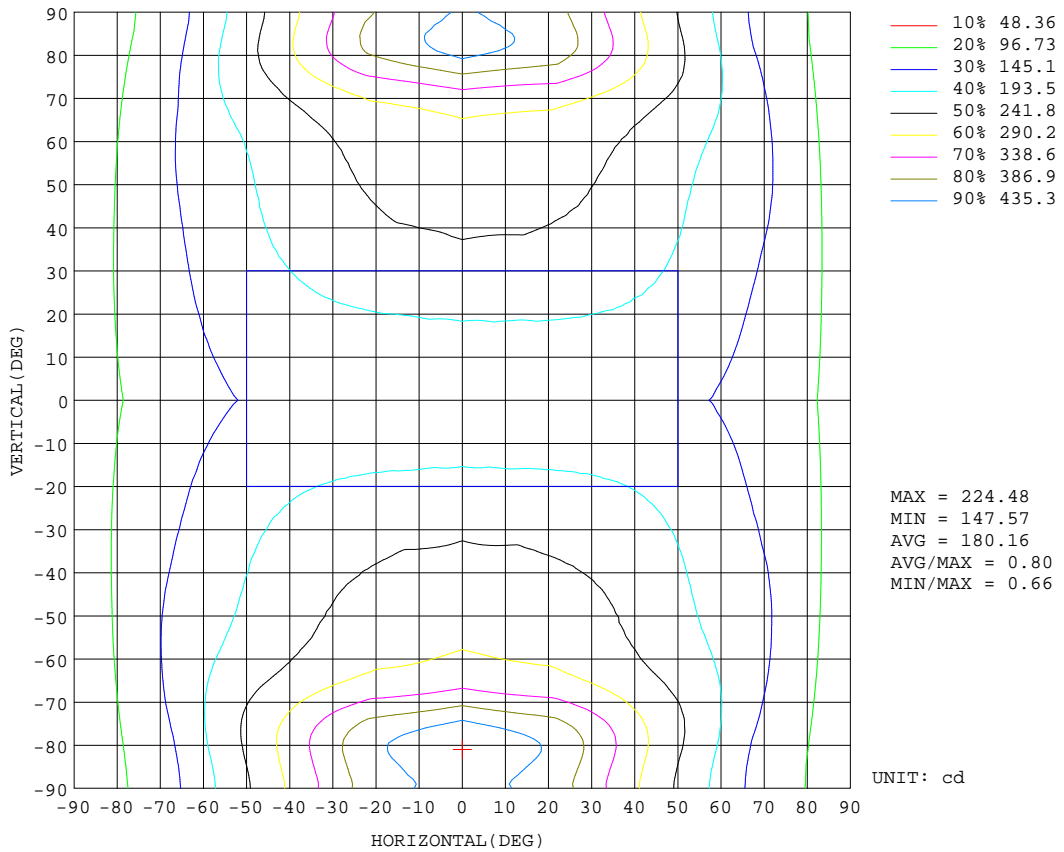
REFLECTANCE										
Ceiling	0.8	0.8	0.8	0.7	0.7	0.7	0.5	0.5	0.5	0
Walls	0.7	0.5	0.3	0.7	0.5	0.3	0.7	0.5	0.3	0
Working plane	0.2	0.2	0.2	0.2	0.2	0.2	0.2	0.2	0.2	0
ROOM INDEX	UTILIZATION FACTORS(PERCENT) $k(RI) \times RCR = 5$									
k = 0.60	36	23	16	34	22	16	31	20	14	7
0.80	45	31	22	42	29	21	37	26	19	10
1.00	52	37	28	48	35	27	42	33	24	13
1.25	58	44	35	54	42	33	47	37	29	16
1.50	64	50	40	59	47	38	51	41	33	18
2.00	71	58	49	66	54	46	56	47	40	22
2.50	76	64	55	71	60	51	60	51	45	25
3.00	80	69	60	74	64	56	63	55	49	27
4.00	86	76	68	79	70	63	67	60	54	31
5.00	89	81	73	82	75	68	69	64	58	33
ROOM INDEX	UF(total)									Direct
According to DIN EN 13032-2 2004			Suspended				SHRNOM = 1.25			

C Range: 0 - 360DEG
 C Interval: 22.5DEG
 Test Speed: HIGH
 Temperature:25.8DEG
 Operators:Carl
 Test Date:2022-06-24

γ Range: 0 - 180DEG
 γ Interval: 1.0DEG
 Test System:EVERFINE GO-R5000_V2 SYSTEM V2.0.351
 Humidity:42%
 Test Distance:2.526m [K=1.0000]
 Remarks:

ISOCANDELA DIAGRAM

Test:U:120.1V I:0.2736A P:32.21W PF:0.9804 Lamp Flux:2844.13x1 lm		
NAME: ASD-LWS27-48D36CC 4000K	TYPE:N/A	WEIGHT:N/A
SPEC.:N/A	DIM.: N/A	SERIAL No.:N/A
MFR.: ASD Lighting corp	SUR.:N/A	Shielding Angle:N/A

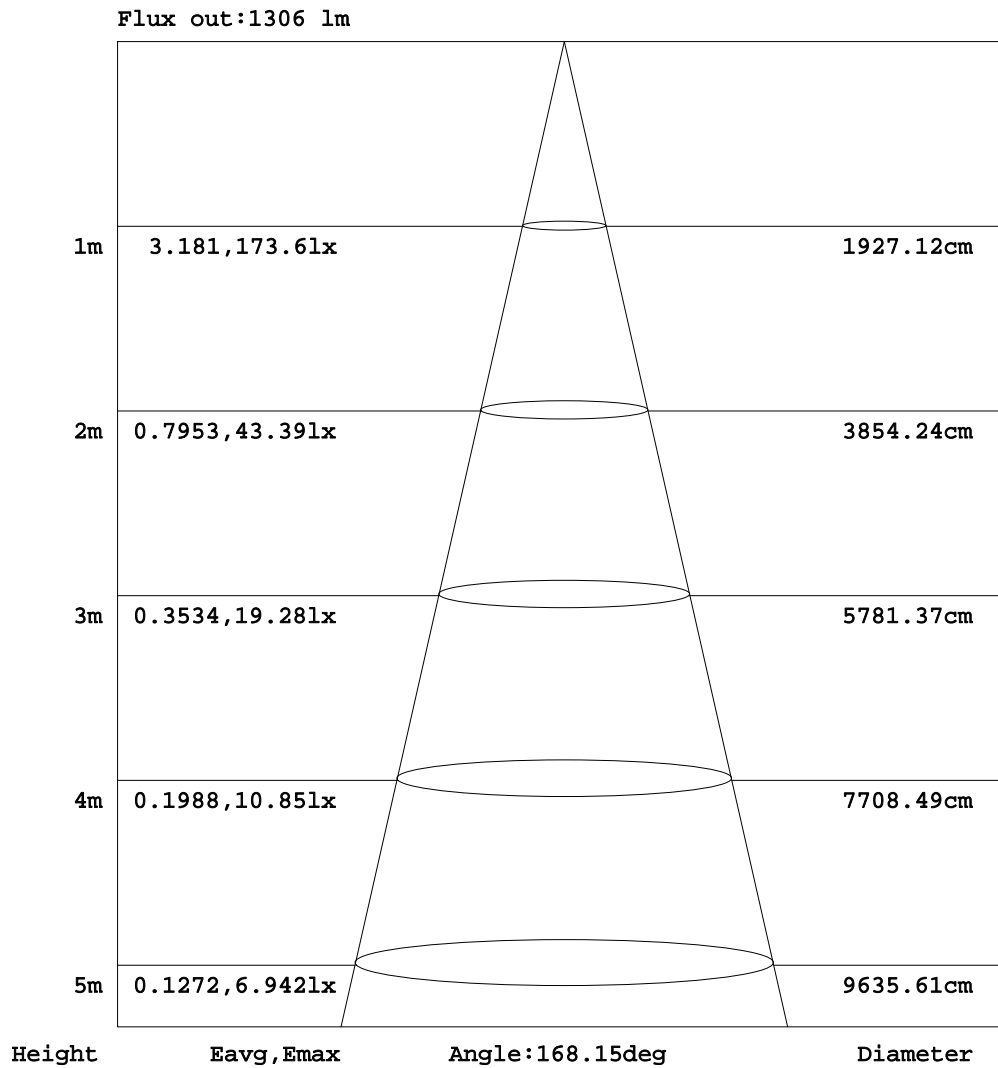


C Range: 0 - 360DEG
 C Interval: 22.5DEG
 Test Speed: HIGH
 Temperature:25.8DEG
 Operators:Carl
 Test Date:2022-06-24

γ Range: 0 - 180DEG
 γ Interval: 1.0DEG
 Test System:EVERFINE GO-R5000_V2 SYSTEM V2.0.351
 Humidity:42%
 Test Distance:2.526m [K=1.0000]
 Remarks:

AAI Figure

Test:U:120.1V I:0.2736A P:32.21W PF:0.9804 Lamp Flux:2844.13x1 lm		
NAME: ASD-LWS27-48D36CC 4000K	TYPE:N/A	WEIGHT:N/A
SPEC.:N/A	DIM.: N/A	SERIAL No.:N/A
MFR.: ASD Lighting corp	SUR.:N/A	Shielding Angle:N/A



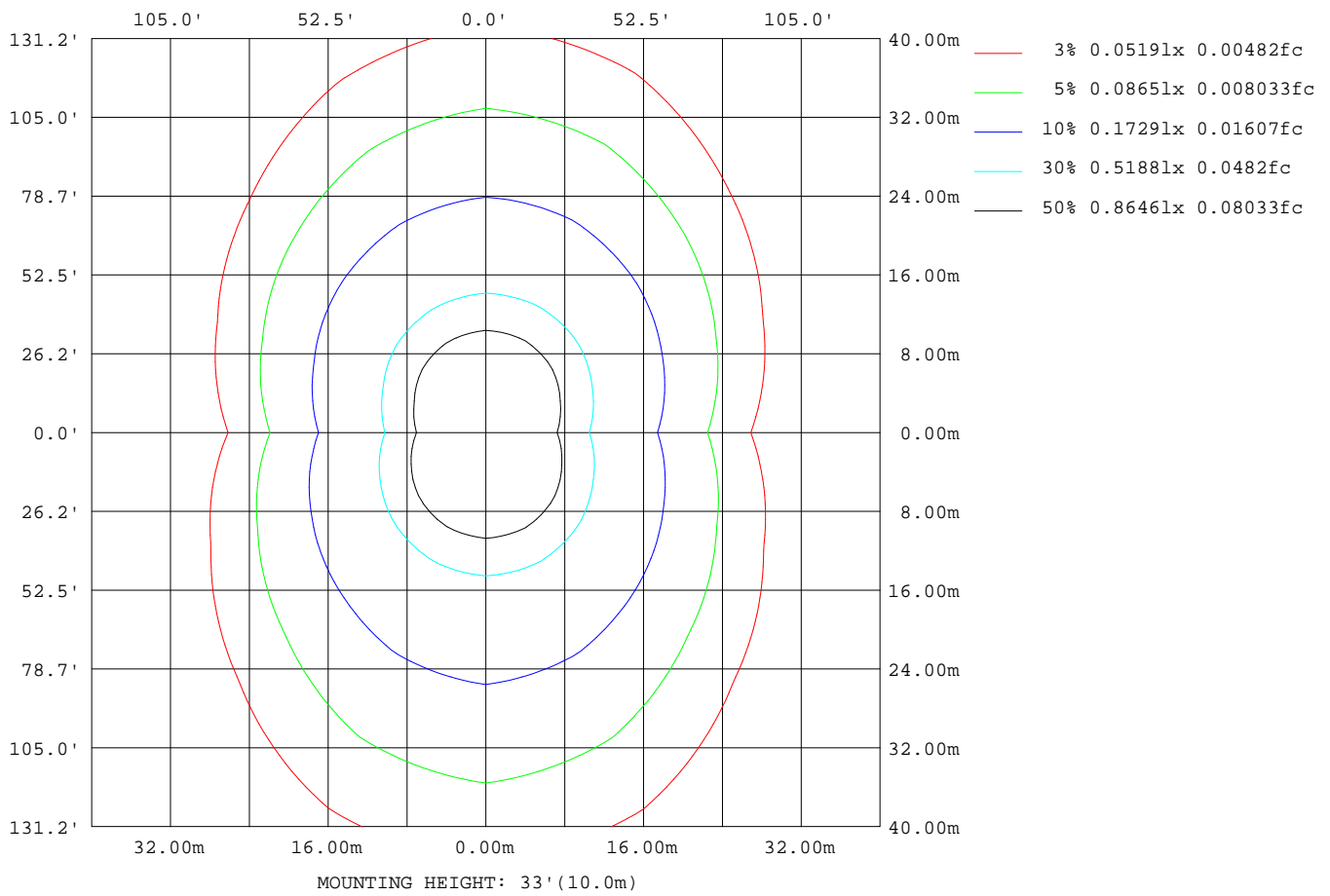
Note:The Curves indicate the illuminated area and the average illumination when the luminaire is at different distance.

C Range: 0 - 360DEG
 C Interval: 22.5DEG
 Test Speed: HIGH
 Temperature:25.8DEG
 Operators:Carl
 Test Date:2022-06-24

γ Range: 0 - 180DEG
 γ Interval: 1.0DEG
 Test System:EVERFINE GO-R5000_V2 SYSTEM V2.0.351
 Humidity:42%
 Test Distance:2.526m [K=1.0000]
 Remarks:

ISOLUX DIAGRAM

Test:U:120.1V I:0.2736A P:32.21W PF:0.9804 Lamp Flux:2844.13x1 lm		
NAME: ASD-LWS27-48D36CC 4000K	TYPE:N/A	WEIGHT:N/A
SPEC.:N/A	DIM.: N/A	SERIAL No.:N/A
MFR.: ASD Lighting corp	SUR.:N/A	Shielding Angle:N/A



C Range: 0 - 360DEG
 C Interval: 22.5DEG
 Test Speed: HIGH
 Temperature:25.8DEG
 Operators:Carl
 Test Date:2022-06-24

γ Range: 0 - 180DEG
 γ Interval: 1.0DEG
 Test System:EVERFINE GO-R5000_V2 SYSTEM V2.0.351
 Humidity:42%
 Test Distance:2.526m [K=1.0000]
 Remarks:

LED Avg.L Report

Test:U:120.1V I:0.2736A P:32.21W PF:0.9804 Lamp Flux:2844.13x1 lm		
NAME: ASD-LWS27-48D36CC 4000K	TYPE:N/A	WEIGHT:N/A
SPEC.:N/A	DIM.: N/A	SERIAL No.:N/A
MFR.: ASD Lighting corp	SUR.:N/A	Shielding Angle:N/A

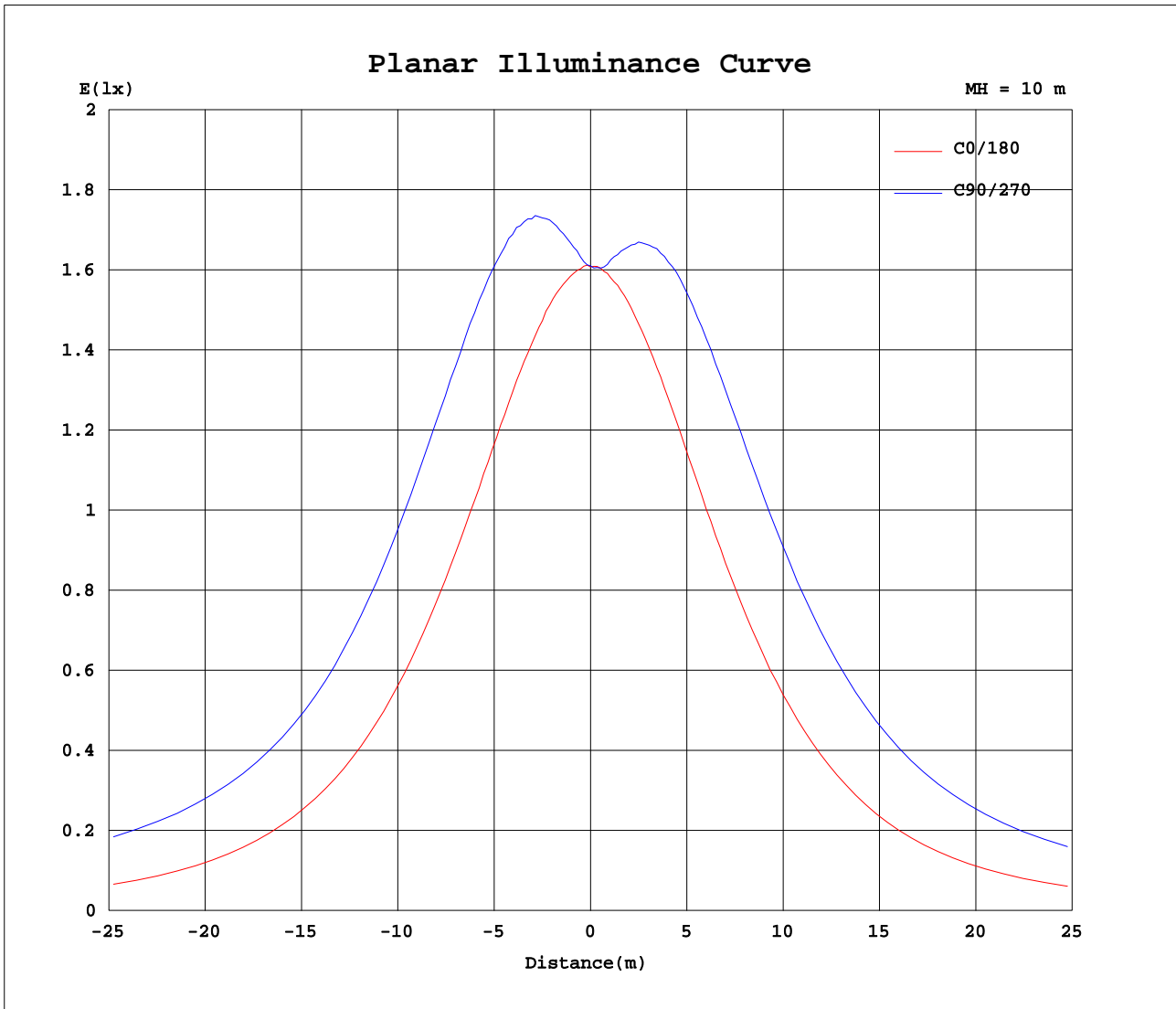
AvgL	cd/m2
L_0~180(65)av	109122
L_0~180(75)av	155726
L_0~180(85)av	324303
L_90~270(65)av	263343
L_90~270(75)av	578302
L_90~270(85)av	1949620
L_45(65)av	199277
L_45(75)av	355292
L_45(85)av	1136868

Standard: GB/T 29293-2012

C Range: 0 - 360DEG
 C Interval: 22.5DEG
 Test Speed: HIGH
 Temperature:25.8DEG
 Operators:Carl
 Test Date:2022-06-24

γ Range: 0 - 180DEG
 γ Interval: 1.0DEG
 Test System:EVERFINE GO-R5000_V2 SYSTEM V2.0.351
 Humidity:42%
 Test Distance:2.526m [K=1.0000]
 Remarks:

Planar Illuminance Curve



C Range: 0 - 360DEG
 C Interval: 22.5DEG
 Test Speed: HIGH
 Temperature: 25.8DEG
 Operators: Carl
 Test Date: 2022-06-24

γ Range: 0 - 180DEG
 γ Interval: 1.0DEG
 Test System: EVERFINE GO-R5000_V2 SYSTEM V2.0.351
 Humidity: 42%
 Test Distance: 2.526m [K=1.0000]
 Remarks:

LUMINOUS DISTRIBUTION INTENSITY DATA

Test:U:120.1V I:0.2736A P:32.21W PF:0.9804 Lamp Flux:2844.13x1 lm		
NAME: ASD-LWS27-48D36CC 4000K	TYPE:N/A	WEIGHT:N/A
SPEC.:N/A	DIM.: N/A	SERIAL No.:N/A
MFR.: ASD Lighting corp	SUR.:N/A	Shielding Angle:N/A

Table--1

UNIT: cd

C(DEG) γ (DEG)	0	22.5	45	67.5	90	112.5	135	157.5	180	202.5	225	247.5	270	292.5	315	337.5			
0	161	161	161	161	161	161	161	161	161	161	161	161	161	161	161	161			
5	161	163	165	167	168	167	165	162	161	160	161	163	163	163	162	161			
10	162	166	172	177	179	177	172	165	161	161	166	171	173	172	167	162			
15	162	170	181	189	192	189	180	169	161	163	173	182	185	183	175	165			
20	163	174	190	202	206	201	189	173	161	166	181	193	198	195	184	169			
25	163	179	200	215	220	214	198	177	161	170	189	205	212	207	193	174			
30	163	183	210	228	235	227	207	181	160	173	198	216	224	219	203	179			
35	163	187	219	240	247	238	215	184	158	176	205	227	236	231	211	183			
40	162	191	227	251	260	248	222	187	156	178	212	236	247	241	219	187			
45	159	192	233	260	269	257	227	188	153	179	217	244	257	250	226	188			
50	155	192	237	267	277	262	231	187	148	178	220	249	264	256	230	189			
55	149	190	239	272	284	268	231	185	140	175	220	254	270	261	232	187			
60	141	186	239	280	297	276	232	179	131	170	220	257	276	266	232	184			
65	131	179	240	298	322	293	234	174	122	164	218	265	289	275	232	177			
70	122	172	248	334	375	331	244	168	113	158	220	285	319	296	236	172			
75	116	169	265	388	445	387	263	165	105	153	231	325	377	343	251	168			
80	106	163	282	424	482	421	281	159	92.7	147	249	378	443	397	273	165			
85	83.4	148	276	417	473	414	276	146	71.7	135	256	395	460	413	280	152			
90	64.7	133	266	407	464	405	267	132	52.9	122	246	381	442	398	270	138			
95	70.2	143	274	417	477	416	275	140	61.9	131	253	385	447	403	276	147			
100	78.5	147	268	408	467	408	270	144	66.4	138	259	396	458	413	280	153			
105	84.7	146	251	370	422	370	252	143	79.4	137	250	381	442	394	267	152			
110	102	146	237	327	366	326	236	143	96.6	138	234	339	391	350	248	151			
115	119	149	228	298	328	297	225	146	113	142	222	302	340	310	233	153			
120	133	150	221	281	305	279	218	147	128	144	214	277	307	284	223	154			
125	146	161	213	266	287	264	210	151	139	147	207	261	285	267	215	154			
130	155	169	205	251	269	249	202	160	147	157	200	246	267	251	207	162			
135	161	173	195	235	250	233	192	166	153	163	191	231	249	236	198	170			
140	167	175	191	217	230	215	184	170	158	166	180	214	230	219	188	174			
145	171	174	193	200	210	198	188	172	163	165	182	197	211	204	185	177			
150	166	175	192	199	200	197	187	166	158	161	179	189	193	191	190	179			
155	154	172	187	196	198	194	181	150	146	143	173	189	192	193	190	181			
160	141	161	182	190	191	189	170	136	132	132	139	173	188	190	187	180			
165	127	155	178	183	185	172	141	122	117	117	125	141	176	183	182	175			
170	132	154	167	176	174	142	127	125	124	123	128	130	138	173	173	167			
175	142	147	158	160	132	122	132	133	136	136	137	135	120	132	157	157			
180	152	147	148	136	119	113	139	148	148	147	146	144	133	99.2	124	138			

C Range: 0 - 360DEG
 C Interval: 22.5DEG
 Test Speed: HIGH
 Temperature:25.8DEG
 Operators:Carl
 Test Date:2022-06-24

γ Range: 0 - 180DEG
 γ Interval: 1.0DEG
 Test System:EVERFINE GO-R5000_V2 SYSTEM V2.0.351
 Humidity:42%
 Test Distance:2.526m [K=1.0000]
 Remarks: