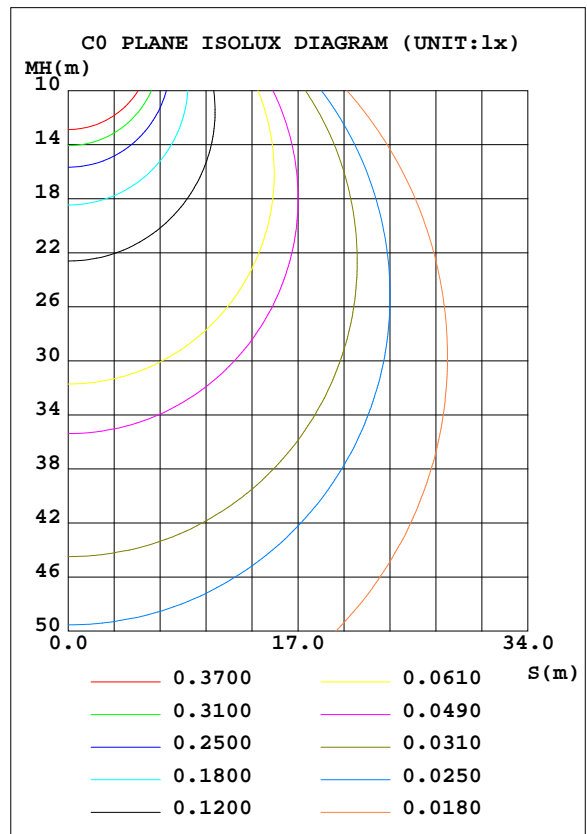
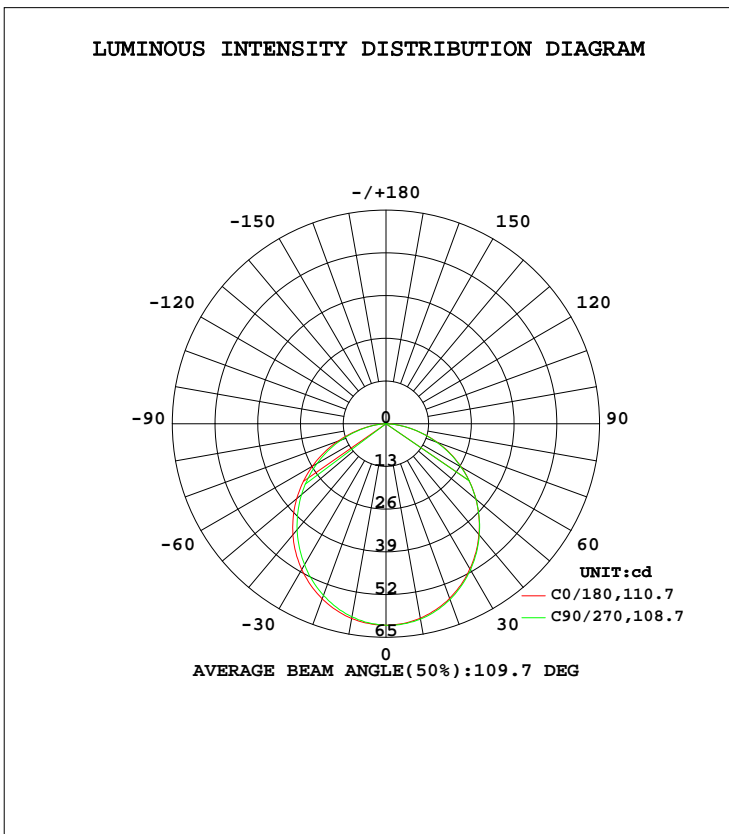


LUMINAIRE PHOTOMETRIC TEST REPORT

Test:U:120.05V I:0.0259A P:3.0400W PF:0.9777 Freq:60.00Hz Lamp Flux:169.407x1 lm		
NAME: ASD-UCS-9D3CC	TYPE: N/A	WEIGHT: N/A
SPEC.: N/A	DIM.: N/A	SERIAL No.: N/A
MFR.: ASD Lighting Corp	SUR.: N/A	Shielding Angle: N/A

DATA OF LAMP		PHOTOMETRIC DATA Eff: 55.73 lm/W			
MODEL	ASD-UCS-9D3CC	I _{max} (cd)	61.42	S/MH(C0/180)	1.24
NOMINAL POWER(W)	3	LOR(%)	100.0	S/MH(C90/270)	1.24
RATED VOLTAGE(V)	120	TOTAL FLUX(lm)	169.41	η UP, DN(C0-180)	0.1,48.8
NOMINAL FLUX(lm)	169.407	CIE CLASS	DIRECT	η UP, DN(C180-360)	0.0,51.1
LAMPS INSIDE	1	η up(%)	0.1	CIBSE SHR NOM	1.25
TEST VOLTAGE(V)	120	η down(%)	99.9	CIBSE SHR MAX	1.35



C Range: 0 - 360DEG
 C Interval: 22.5DEG
 Test Speed: HIGH
 Temperature:24.8DEG
 Operators:Water
 Test Date:2023-09-06

γ Range: 0 - 180DEG
 γ Interval: 1.0DEG
 Test System:EVERFINE GO-R5000_V2 SYSTEM V2.00.446
 Humidity:34%
 Test Distance:2.513m [K=1.0000]
 Remarks: Model No: UCL-31B-9G

ZONAL FLUX DIAGRAM

ZONAL FLUX DIAGRAM:

γ	C0	C45	C90	C135	C180	C225	C270	C315	γ	Φ zone	Φ total	%lum, lamp
10	60.19	59.90	59.68	59.70	60.10	60.30	60.41	60.49	0- 10	5.794	5.794	3.42,3.42
20	56.75	56.13	55.64	55.82	56.55	56.82	56.95	57.19	10- 20	16.51	22.31	13.2,13.2
30	51.30	50.29	49.56	49.97	51.01	51.29	51.44	51.71	20- 30	24.82	47.13	27.8,27.8
40	44.09	42.95	42.08	42.65	44.00	44.19	44.15	44.56	30- 40	29.64	76.77	45.3,45.3
50	35.47	34.38	33.55	34.24	35.72	35.87	35.73	36.12	40- 50	30.46	107.2	63.3,63.3
60	25.86	24.85	24.27	25.00	26.51	26.59	26.37	26.60	50- 60	27.29	134.5	79.4,79.4
70	15.59	14.80	14.54	15.27	16.65	16.71	16.41	16.40	60- 70	20.60	155.1	91.6,91.6
80	5.803	5.303	5.419	5.898	6.710	6.921	6.749	6.543	70- 80	11.47	166.6	98.3,98.3
90	0.0007	0.0008	0	0.0060	0.0518	0.0055	0.0001	0.0007	80- 90	2.673	169.3	99.9,99.9
100	0.0039	0.0095	0.0069	0.0220	0	0	0	0	90-100	0.0027	169.3	99.9,99.9
110	0.0069	0.0102	0.0116	0.0168	0.0035	0	0	0	100-110	0.0061	169.3	99.9,99.9
120	0.0139	0.0158	0.0193	0.0201	0.0048	0.0046	0.0033	0.0044	110-120	0.0080	169.3	99.9,99.9
130	0.0248	0.0272	0.0326	0.0318	0.0119	0.0118	0.0106	0.0106	120-130	0.0137	169.3	99.9,99.9
140	0.0463	0.0530	0.0574	0.0547	0.0197	0.0199	0.0203	0.0191	130-140	0.0208	169.3	100,100
150	0.0708	0.0796	0.0871	0.0779	0.0270	0.0278	0.0320	0.0280	140-150	0.0287	169.4	100,100
160	0.0940	0.0974	0.1001	0.1007	0.0403	0.0399	0.0405	0.0386	150-160	0.0287	169.4	100,100
170	0.0903	0.0912	0.0930	0.0930	0.0517	0.0492	0.0490	0.0505	160-170	0.0203	169.4	100,100
180	0.0733	0.0691	0.0680	0.0722	0.0718	0.0712	0.0675	0.0687	170-180	0.0068	169.4	100,100
DEG	LUMINOUS INTENSITY:cd									UNIT:lm		

Conical surface Flux(90deg): 92.149 lm

%lum = 54.4%
%lamp = 54.4%

Conical surface Flux(120deg): 134.52 lm

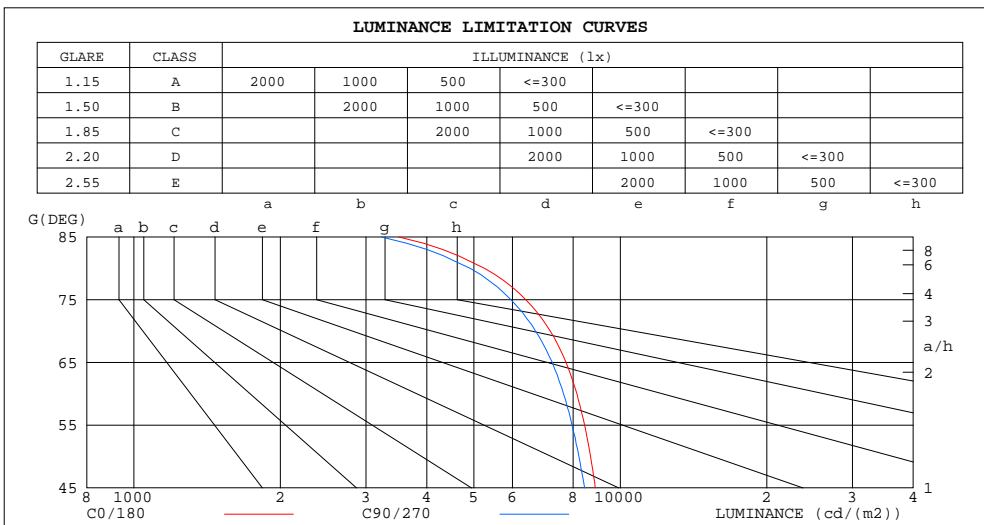
%lum = 79.4%
%lamp = 79.4%

C Range: 0 - 360DEG
C Interval: 22.5DEG
Test Speed: HIGH
Temperature:24.8DEG
Operators:Water
Test Date:2023-09-06

γ Range: 0 - 180DEG
γ Interval: 1.0DEG
Test System:EVERFINE GO-R5000_V2 SYSTEM V2.00.446
Humidity:34%
Test Distance:2.513m [K=1.0000]
Remarks: Model No: UCL-31B-9G

LUMINANCE LIMITATION CURVES

Test:U:120.05V I:0.0259A P:3.0400W PF:0.9777 Freq:60.00Hz Lamp Flux:169.407x1 lm		
NAME: ASD-UCS-9D3CC	TYPE: N/A	WEIGHT: N/A
SPEC.: N/A	DIM.: N/A	SERIAL No.: N/A
MFR.: ASD Lighting Corp	SUR.: N/A	Shielding Angle: N/A



LUMINANCE cd/(m2)		
G (DEG)	C0/180	C90/270
85	3504	3227
80	5261	4912
75	6393	5963
70	7178	6691
65	7736	7247
60	8141	7639
55	8447	7958
50	8687	8217
45	8882	8445

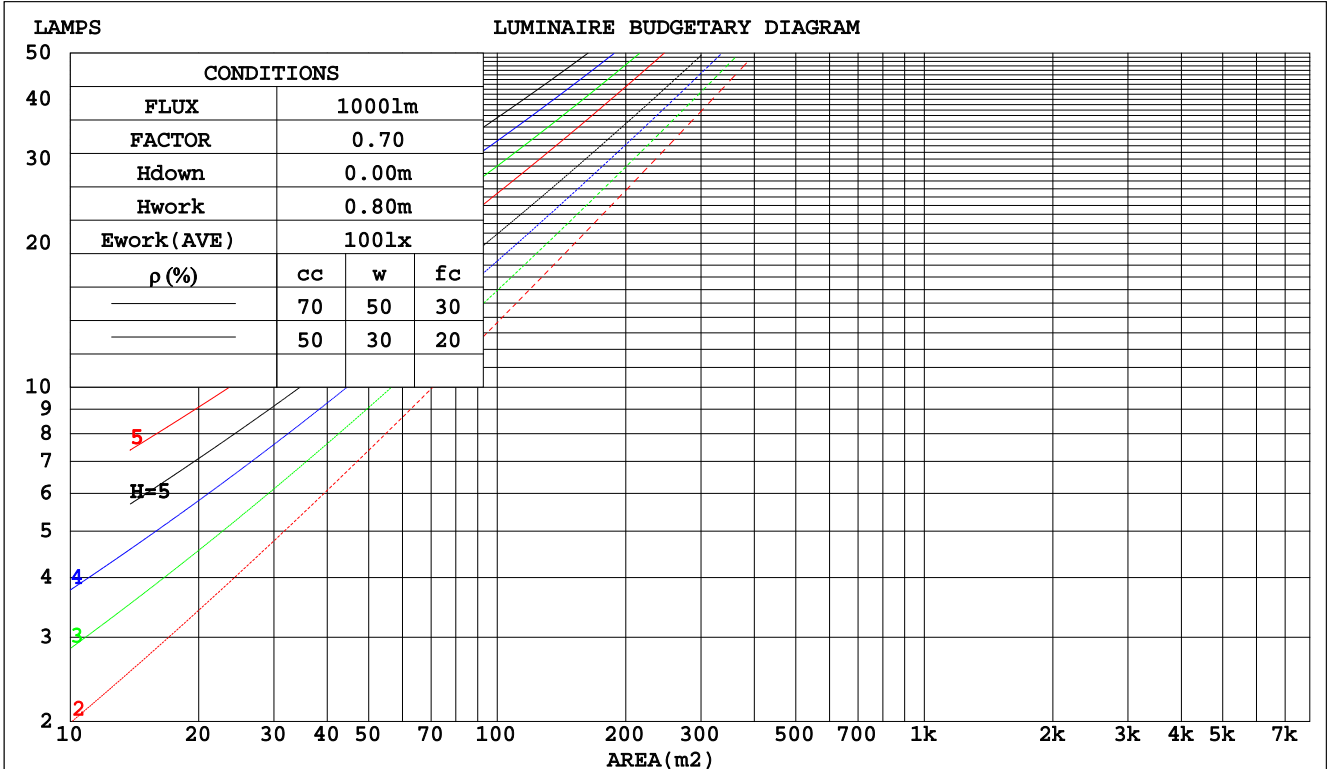
C Range: 0 - 360DEG
 C Interval: 22.5DEG
 Test Speed: HIGH
 Temperature: 24.8DEG
 Operators: Water
 Test Date: 2023-09-06

γ Range: 0 - 180DEG
 γ Interval: 1.0DEG
 Test System: EVERFINE GO-R5000_V2 SYSTEM V2.00.446
 Humidity: 34%
 Test Distance: 2.513m [K=1.0000]
 Remarks: Model No: UCL-31B-9G

CU AND LUMINAIRE BUDGETARY ESTIMATE DIAGRAM

Test:U:120.05V I:0.0259A P:3.0400W PF:0.9777 Freq:60.00Hz Lamp Flux:169.407x1 lm		
NAME: ASD-UCS-9D3CC	TYPE: N/A	WEIGHT: N/A
SPEC.: N/A	DIM.: N/A	SERIAL No.: N/A
MFR.: ASD Lighting Corp	SUR.: N/A	Shielding Angle: N/A

pcc	80%			70%			50%			30%			10%			0
	50%	30%	10%	50%	30%	10%	50%	30%	10%	50%	30%	10%	50%	30%	10%	0
pw																0
pfc	20%			20%			20%			20%			20%			0
RCR	RCR:Room Cavity Ratio															
	Coefficients of Utilization(CU)															
0.0	1.19	1.19	1.19	1.16	1.16	1.16	1.11	1.11	1.11	1.06	1.06	1.06	1.02	1.02	1.02	.00
1.0	1.04	.00	.96	1.02	.98	.94	.98	.94	.91	.94	.91	.89	.90	.88	.86	.84
2.0	.91	.84	.78	.89	.83	.77	.85	.80	.76	.82	.78	.74	.79	.75	.72	.70
3.0	.80	.72	.65	.78	.71	.65	.75	.69	.63	.72	.67	.62	.70	.65	.61	.59
4.0	.71	.62	.55	.69	.61	.55	.67	.60	.54	.64	.58	.53	.62	.57	.53	.50
5.0	.63	.54	.48	.62	.54	.47	.60	.52	.47	.58	.51	.46	.56	.50	.46	.44
6.0	.57	.48	.41	.56	.47	.41	.54	.47	.41	.52	.46	.41	.51	.45	.40	.38
7.0	.52	.43	.37	.51	.42	.36	.49	.42	.36	.48	.41	.36	.46	.40	.36	.34
8.0	.47	.39	.33	.46	.38	.33	.45	.38	.32	.44	.37	.32	.43	.36	.32	.30
9.0	.43	.35	.29	.43	.35	.29	.41	.34	.29	.40	.34	.29	.39	.33	.29	.27
10.0	.40	.32	.27	.39	.32	.27	.38	.31	.26	.37	.31	.26	.36	.31	.26	.24



C Range: 0 - 360DEG
 C Interval: 22.5DEG
 Test Speed: HIGH
 Temperature:24.8DEG
 Operators:Water
 Test Date:2023-09-06

γ Range: 0 - 180DEG
 γ Interval: 1.0DEG
 Test System:EVERFINE GO-R5000_V2 SYSTEM V2.00.446
 Humidity:34%
 Test Distance:2.513m [K=1.0000]
 Remarks: Model No: UCL-31B-9G

WEC AND CCEC

Test:U:120.05V I:0.0259A P:3.0400W PF:0.9777 Freq:60.00Hz		
Lamp Flux:169.407x1 lm		
NAME: ASD-UCS-9D3CC	TYPE: N/A	WEIGHT: N/A
SPEC.: N/A	DIM.: N/A	SERIAL No.: N/A
MFR.: ASD Lighting Corp	SUR.: N/A	Shielding Angle: N/A

ρcc	80%			70%			50%			30%			10%			0
ρw	50%	30%	10%	50%	30%	10%	50%	30%	10%	50%	30%	10%	50%	30%	10%	0
ρfc	20%			20%			20%			20%			20%			0
RCR	RCR:Room Cavity Ratio						Wall Exitance Coefficients(WEC)									
0.0																
1.0	.305	.173	.055	.298	.170	.054	.284	.163	.052	.272	.157	.050	.261	.151	.049	
2.0	.288	.158	.048	.282	.155	.048	.270	.150	.047	.259	.146	.046	.250	.141	.044	
3.0	.267	.142	.043	.262	.140	.042	.252	.136	.041	.242	.133	.041	.233	.129	.040	
4.0	.247	.128	.038	.242	.127	.037	.233	.124	.037	.225	.121	.036	.217	.118	.036	
5.0	.229	.117	.034	.224	.115	.034	.216	.113	.033	.209	.110	.033	.202	.108	.032	
6.0	.212	.106	.030	.209	.105	.030	.201	.103	.030	.194	.101	.030	.188	.099	.029	
7.0	.198	.098	.028	.194	.097	.028	.188	.095	.027	.182	.093	.027	.176	.091	.027	
8.0	.185	.090	.025	.182	.089	.025	.176	.088	.025	.170	.086	.025	.165	.085	.025	
9.0	.173	.084	.023	.171	.083	.023	.165	.082	.023	.160	.080	.023	.156	.079	.023	
10.0	.163	.078	.022	.160	.078	.022	.156	.076	.021	.151	.075	.021	.147	.074	.021	

ρcc	80%			70%			50%			30%			10%			0
ρw	50%	30%	10%	50%	30%	10%	50%	30%	10%	50%	30%	10%	50%	30%	10%	0
ρfc	20%			20%			20%			20%			20%			0
RCR	RCR:Room Cavity Ratio						Ceiling Cavity Exitance Coefficients(CCEC)									
0.0	.191	.191	.191	.163	.163	.163	.111	.111	.111	.064	.064	.064	.020	.020	.020	
1.0	.181	.157	.135	.154	.135	.117	.106	.093	.081	.061	.054	.047	.019	.017	.015	
2.0	.172	.133	.099	.148	.114	.086	.101	.079	.060	.058	.046	.035	.019	.015	.011	
3.0	.165	.115	.075	.141	.099	.065	.097	.069	.046	.056	.040	.027	.018	.013	.009	
4.0	.157	.102	.059	.135	.088	.051	.093	.061	.036	.054	.036	.021	.017	.012	.007	
5.0	.150	.091	.048	.128	.079	.042	.088	.055	.030	.051	.032	.018	.017	.011	.006	
6.0	.142	.083	.040	.122	.072	.035	.084	.050	.025	.049	.030	.015	.016	.010	.005	
7.0	.136	.076	.034	.117	.066	.030	.081	.046	.021	.047	.027	.012	.015	.009	.004	
8.0	.129	.070	.029	.111	.061	.026	.077	.043	.018	.045	.025	.011	.014	.008	.004	
9.0	.123	.065	.026	.106	.057	.023	.074	.040	.016	.043	.023	.010	.014	.008	.003	
10.0	.117	.061	.023	.101	.053	.020	.070	.037	.014	.041	.022	.009	.013	.007	.003	

C Range: 0 - 360DEG
 C Interval: 22.5DEG
 Test Speed: HIGH
 Temperature:24.8DEG
 Operators:Water
 Test Date:2023-09-06

γ Range: 0 - 180DEG
 γ Interval: 1.0DEG
 Test System:EVERFINE GO-R5000_V2 SYSTEM V2.00.446
 Humidity:34%
 Test Distance:2.513m [K=1.0000]
 Remarks: Model No: UCL-31B-9G

UGR(Unified Glare Rating) Table

Test:U:120.05V I:0.0259A P:3.0400W PF:0.9777 Freq:60.00Hz Lamp Flux:169.407x1 lm		
NAME: ASD-UCS-9D3CC	TYPE: N/A	WEIGHT: N/A
SPEC.: N/A	DIM.: N/A	SERIAL No.: N/A
MFR.: ASD Lighting Corp	SUR.: N/A	Shielding Angle: N/A

ceiling/cavity	0.7	0.7	0.5	0.5	0.3	0.7	0.7	0.5	0.5	0.3
walls	0.5	0.3	0.5	0.3	0.3	0.5	0.3	0.5	0.3	0.3
working plane	0.2	0.2	0.2	0.2	0.2	0.2	0.2	0.2	0.2	0.2
Room dimensions	Viewed crosswise					Viewed endwise				
x = 2H y = 2H	26.4	27.9	26.6	28.1	28.3	26.1	27.6	26.4	27.8	28.0
3H	27.8	29.2	28.1	29.4	29.7	27.5	28.9	27.8	29.1	29.4
4H	28.3	29.7	28.6	29.9	30.2	28.0	29.3	28.3	29.6	29.9
6H	28.7	29.9	29.0	30.2	30.5	28.3	29.6	28.7	29.9	30.1
8H	28.7	30.0	29.1	30.2	30.5	28.4	29.6	28.8	29.9	30.2
12H	28.8	29.9	29.1	30.2	30.5	28.4	29.6	28.8	29.9	30.2
4H 2H	26.9	28.2	27.2	28.5	28.7	26.7	28.0	27.0	28.3	28.5
3H	28.5	29.7	28.9	30.0	30.3	28.3	29.4	28.6	29.7	30.0
4H	29.2	30.2	29.5	30.5	30.9	28.9	30.0	29.3	30.3	30.6
6H	29.6	30.5	30.0	30.9	31.3	29.3	30.3	29.7	30.6	31.0
8H	29.7	30.6	30.1	31.0	31.3	29.4	30.3	29.8	30.7	31.1
12H	29.8	30.6	30.2	31.0	31.4	29.5	30.3	29.9	30.7	31.1
8H 4H	29.4	30.2	29.8	30.6	31.0	29.1	30.0	29.5	30.4	30.8
6H	29.9	30.6	30.4	31.0	31.5	29.7	30.4	30.1	30.8	31.2
8H	30.1	30.7	30.5	31.2	31.6	29.8	30.5	30.3	30.9	31.4
12H	30.2	30.7	30.7	31.2	31.7	29.9	30.5	30.4	30.9	31.4
12H 4H	29.4	30.2	29.8	30.5	31.0	29.1	29.9	29.5	30.3	30.7
6H	29.9	30.6	30.4	31.0	31.5	29.7	30.3	30.2	30.8	31.2
8H	30.1	30.7	30.6	31.1	31.6	29.9	30.4	30.4	30.9	31.4
Variations with the observer position at spacings(CIE Pub.117):										
S = 1.0H	+ 0.2 / - 0.2					+ 0.2 / - 0.2				
1.5H	+ 0.2 / - 0.3					+ 0.2 / - 0.3				
2.0H	+ 0.2 / - 0.3					+ 0.2 / - 0.3				

CIE Pub.117, 169.4 lm Total Lamp Luminous Flux Correct (8log(F/F0) = -6.2)
Area: 0.006355 m2

C Range: 0 - 360DEG
C Interval: 22.5DEG
Test Speed: HIGH
Temperature:24.8DEG
Operators:Water
Test Date:2023-09-06

γ Range: 0 - 180DEG
γ Interval: 1.0DEG
Test System:EVERFINE GO-R5000_V2 SYSTEM V2.00.446
Humidity:34%
Test Distance:2.513m [K=1.0000]
Remarks: Model No: UCL-31B-9G

UTILIZATION FACTORS TABLE

Test:U:120.05V I:0.0259A P:3.0400W PF:0.9777 Freq:60.00Hz Lamp Flux:169.407x1 lm		
NAME: ASD-UCS-9D3CC	TYPE: N/A	WEIGHT: N/A
SPEC.: N/A	DIM.: N/A	SERIAL No.: N/A
MFR.: ASD Lighting Corp	SUR.: N/A	Shielding Angle: N/A

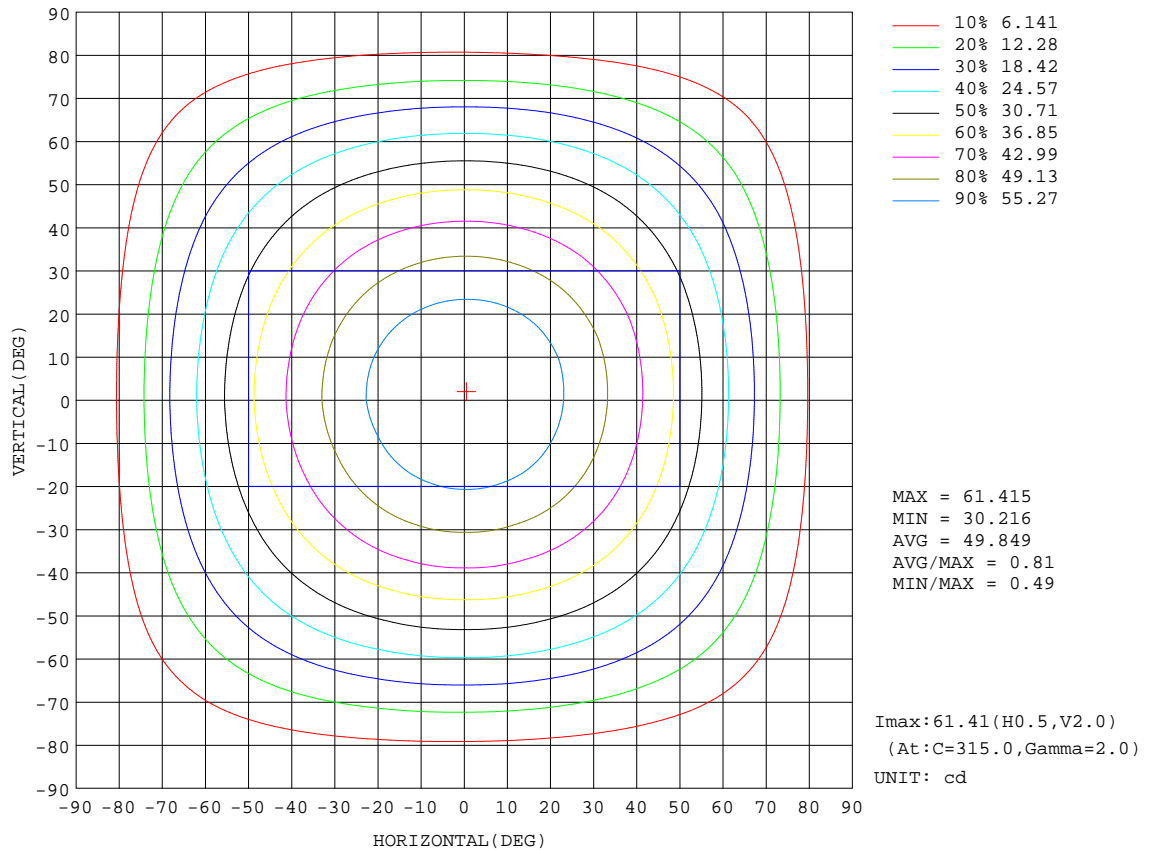
REFLECTANCE										
Ceiling	0.8	0.8	0.8	0.7	0.7	0.7	0.5	0.5	0.5	0
Walls	0.7	0.5	0.3	0.7	0.5	0.3	0.7	0.5	0.3	0
Working plane	0.2	0.2	0.2	0.2	0.2	0.2	0.2	0.2	0.2	0
ROOM INDEX	UTILIZATION FACTORS(PERCENT) k(RI) x RCR = 5									
k = 0.60	58	46	39	57	46	39	56	46	39	33
0.80	68	56	49	67	56	49	65	55	49	42
1.00	76	65	58	75	65	58	73	66	57	50
1.25	83	73	66	82	72	66	79	71	65	57
1.50	88	79	72	87	78	71	84	76	70	63
2.00	95	87	80	93	86	80	90	83	78	70
2.50	99	91	85	97	90	85	93	87	83	74
3.00	102	96	90	100	94	89	96	91	87	79
4.00	106	101	96	104	99	95	100	96	92	83
5.00	109	104	100	106	102	99	102	98	95	86
ROOM INDEX	UF(total)									Direct
According to DIN EN 13032-2 2004			Suspended				SHRNOM = 1.25			

C Range: 0 - 360DEG
 C Interval: 22.5DEG
 Test Speed: HIGH
 Temperature:24.8DEG
 Operators:Water
 Test Date:2023-09-06

γ Range: 0 - 180DEG
 γ Interval: 1.0DEG
 Test System:EVERFINE GO-R5000_V2 SYSTEM V2.00.446
 Humidity:34%
 Test Distance:2.513m [K=1.0000]
 Remarks: Model No: UCL-31B-9G

ISOCANDELA DIAGRAM

Test:U:120.05V I:0.0259A P:3.0400W PF:0.9777 Freq:60.00Hz Lamp Flux:169.407x1 lm		
NAME: ASD-UCS-9D3CC	TYPE: N/A	WEIGHT: N/A
SPEC.: N/A	DIM.: N/A	SERIAL No.: N/A
MFR.: ASD Lighting Corp	SUR.: N/A	Shielding Angle: N/A

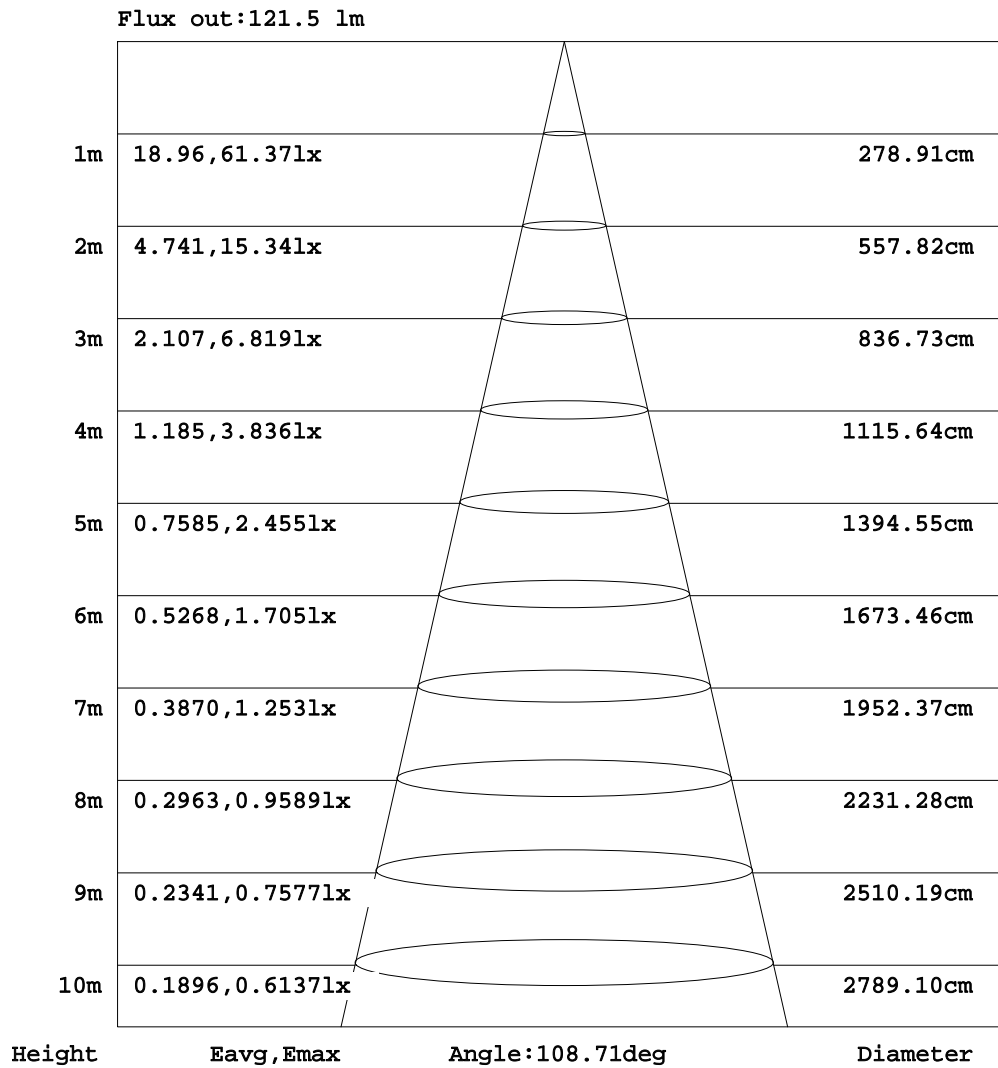


C Range: 0 - 360DEG
 C Interval: 22.5DEG
 Test Speed: HIGH
 Temperature: 24.8DEG
 Operators: Water
 Test Date: 2023-09-06

γ Range: 0 - 180DEG
 γ Interval: 1.0DEG
 Test System: EVERFINE GO-R5000_V2 SYSTEM V2.00.446
 Humidity: 34%
 Test Distance: 2.513m [K=1.0000]
 Remarks: Model No: UCL-31B-9G

AAI Figure

Test:U:120.05V I:0.0259A P:3.0400W PF:0.9777 Freq:60.00Hz Lamp Flux:169.407x1 lm		
NAME: ASD-UCS-9D3CC	TYPE: N/A	WEIGHT: N/A
SPEC.: N/A	DIM.: N/A	SERIAL No.: N/A
MFR.: ASD Lighting Corp	SUR.: N/A	Shielding Angle: N/A



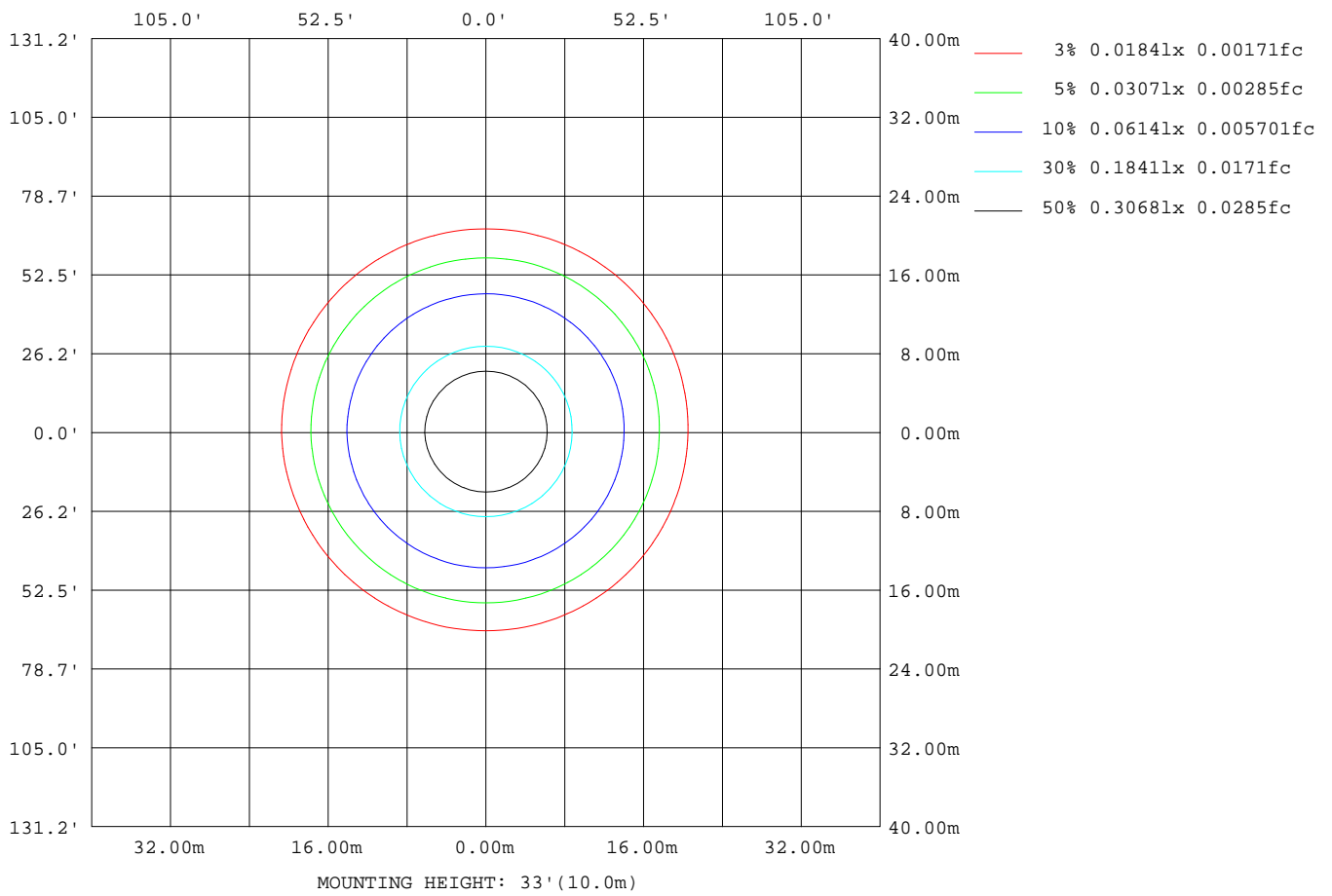
Note:The Curves indicate the illuminated area and the average illumination when the luminaire is at different distance.

C Range: 0 - 360DEG
 C Interval: 22.5DEG
 Test Speed: HIGH
 Temperature:24.8DEG
 Operators:Water
 Test Date:2023-09-06

γ Range: 0 - 180DEG
 γ Interval: 1.0DEG
 Test System:EVERFINE GO-R5000_V2 SYSTEM V2.00.446
 Humidity:34%
 Test Distance:2.513m [K=1.0000]
 Remarks: Model No: UCL-31B-9G

ISOLUX DIAGRAM

Test:U:120.05V I:0.0259A P:3.0400W PF:0.9777 Freq:60.00Hz Lamp Flux:169.407x1 lm		
NAME: ASD-UCS-9D3CC	TYPE: N/A	WEIGHT: N/A
SPEC.: N/A	DIM.: N/A	SERIAL No.: N/A
MFR.: ASD Lighting Corp	SUR.: N/A	Shielding Angle: N/A



C Range: 0 - 360DEG
 C Interval: 22.5DEG
 Test Speed: HIGH
 Temperature: 24.8DEG
 Operators: Water
 Test Date: 2023-09-06

γ Range: 0 - 180DEG
 γ Interval: 1.0DEG
 Test System: EVERFINE GO-R5000_V2 SYSTEM V2.00.446
 Humidity: 34%
 Test Distance: 2.513m [K=1.0000]
 Remarks: Model No: UCL-31B-9G

LED Avg.L Report

Test:U:120.05V I:0.0259A P:3.0400W PF:0.9777 Freq:60.00Hz Lamp Flux:169.407x1 lm		
NAME: ASD-UCS-9D3CC	TYPE: N/A	WEIGHT: N/A
SPEC.: N/A	DIM.: N/A	SERIAL No.: N/A
MFR.: ASD Lighting Corp	SUR.: N/A	Shielding Angle: N/A

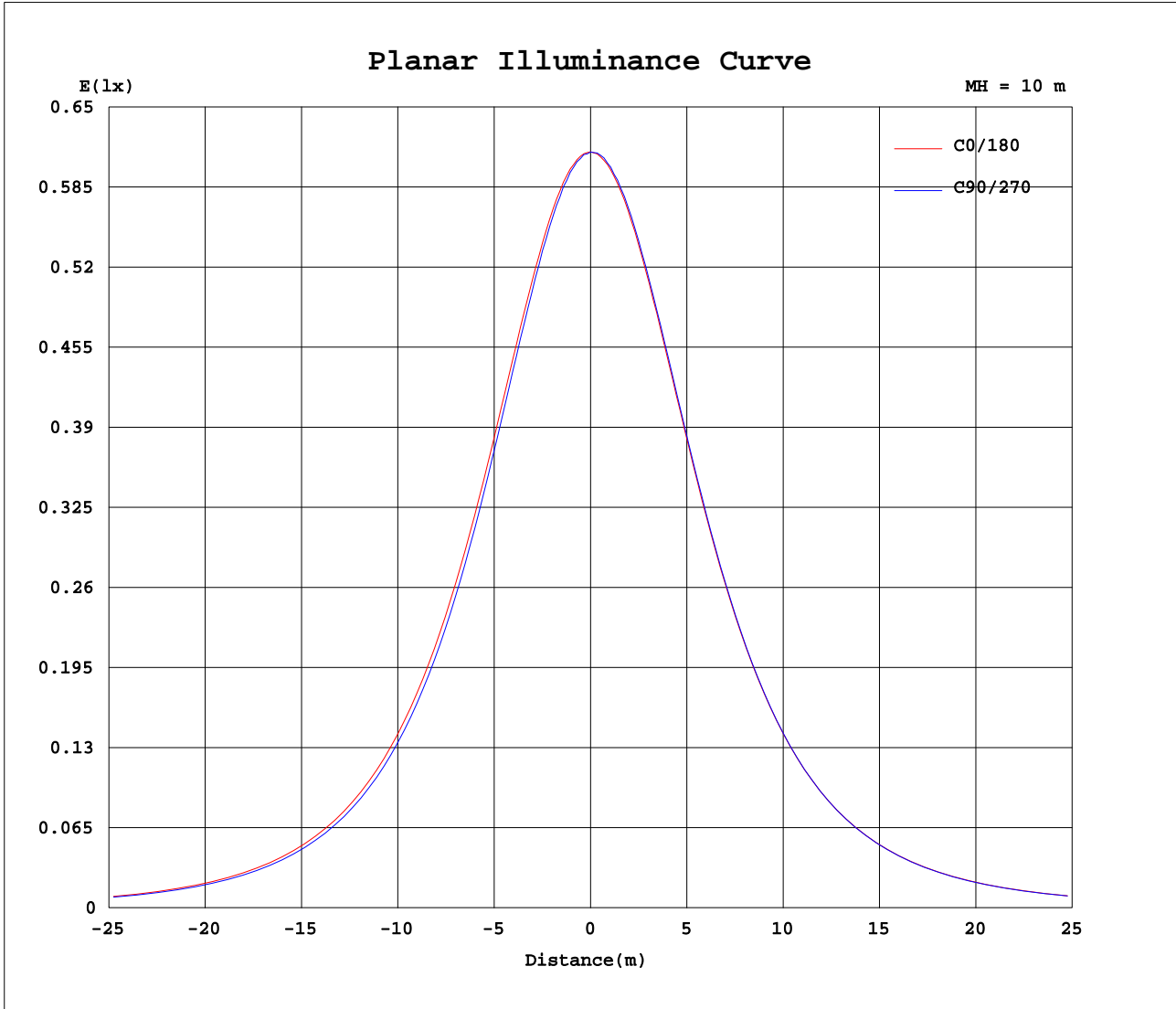
AvgL	cd/m2
L_0~180(65)av	7902
L_0~180(75)av	6691
L_0~180(85)av	4105
L_90~270(65)av	7617
L_90~270(75)av	6454
L_90~270(85)av	3920
L_45(65)av	7756
L_45(75)av	6585
L_45(85)av	3897

Standard: GB/T 29293-2012

C Range: 0 - 360DEG
 C Interval: 22.5DEG
 Test Speed: HIGH
 Temperature:24.8DEG
 Operators:Water
 Test Date:2023-09-06

γ Range: 0 - 180DEG
 γ Interval: 1.0DEG
 Test System:EVERFINE GO-R5000_V2 SYSTEM V2.00.446
 Humidity:34%
 Test Distance:2.513m [K=1.0000]
 Remarks: Model No: UCL-31B-9G

Planar Illuminance Curve



C Range: 0 - 360DEG
 C Interval: 22.5DEG
 Test Speed: HIGH
 Temperature: 24.8DEG
 Operators: Water
 Test Date: 2023-09-06

γ Range: 0 - 180DEG
 γ Interval: 1.0DEG
 Test System: EVERFINE GO-R5000_V2 SYSTEM V2.00.446
 Humidity: 34%
 Test Distance: 2.513m [K=1.0000]
 Remarks: Model No: UCL-31B-9G

LUMINOUS DISTRIBUTION INTENSITY DATA

Test:U:120.05V I:0.0259A P:3.0400W PF:0.9777 Freq:60.00Hz Lamp Flux:169.407x1 lm		
NAME: ASD-UCS-9D3CC	TYPE: N/A	WEIGHT: N/A
SPEC.: N/A	DIM.: N/A	SERIAL No.: N/A
MFR.: ASD Lighting Corp	SUR.: N/A	Shielding Angle: N/A

Table--1

UNIT: cd

C(DEG) γ (DEG)	0	22.5	45	67.5	90	112.5	135	157.5	180	202.5	225	247.5	270	292.5	315	337.5			
0	61.3	61.3	61.3	61.3	61.3	61.3	61.3	61.3	61.3	61.3	61.3	61.3	61.3	61.3	61.3	61.3			
5	61.0	61.0	60.9	60.8	60.8	60.7	60.8	60.9	61.0	61.1	61.1	61.1	61.1	61.1	61.2	61.2			
10	60.2	60.1	59.9	59.8	59.7	59.6	59.7	59.9	60.1	60.2	60.3	60.3	60.4	60.5	60.5	60.5			
15	58.7	58.5	58.3	58.0	57.9	57.9	58.0	58.3	58.6	58.8	58.8	58.8	58.9	59.0	59.0	59.0			
20	56.7	56.5	56.1	55.8	55.6	55.6	55.8	56.1	56.5	56.7	56.8	56.9	57.0	57.1	57.2	57.1			
25	54.2	53.9	53.4	52.9	52.8	52.9	53.2	53.6	54.1	54.3	54.3	54.3	54.4	54.5	54.6	54.6			
30	51.3	50.8	50.3	49.8	49.6	49.6	50.0	50.5	51.0	51.2	51.3	51.3	51.4	51.5	51.7	51.8			
35	47.8	47.4	46.8	46.2	46.0	46.1	46.5	47.1	47.8	48.0	48.0	47.9	48.0	48.1	48.3	48.4			
40	44.1	43.6	43.0	42.3	42.1	42.2	42.7	43.3	44.0	44.2	44.2	44.1	44.2	44.3	44.6	44.7			
45	39.9	39.4	38.8	38.2	37.9	38.1	38.6	39.3	40.0	40.3	40.2	40.1	40.1	40.2	40.5	40.5			
50	35.5	35.0	34.4	33.8	33.6	33.7	34.2	34.9	35.7	36.0	35.9	35.7	35.7	35.9	36.1	36.1			
55	30.8	30.3	29.7	29.2	29.0	29.2	29.8	30.4	31.2	31.5	31.4	31.2	31.2	31.3	31.4	31.4			
60	25.9	25.4	24.8	24.5	24.3	24.5	25.0	25.7	26.5	26.7	26.6	26.4	26.4	26.5	26.6	26.5			
65	20.8	20.3	19.9	19.6	19.5	19.7	20.2	20.8	21.7	21.8	21.7	21.5	21.5	21.6	21.5	21.5			
70	15.6	15.2	14.8	14.6	14.5	14.8	15.3	15.9	16.6	16.8	16.7	16.5	16.4	16.5	16.4	16.3			
75	10.5	10.2	9.85	9.75	9.80	10.0	10.5	10.9	11.5	11.7	11.7	11.5	11.4	11.4	11.3	11.1			
80	5.80	5.49	5.30	5.33	5.42	5.61	5.90	6.19	6.71	6.88	6.92	6.87	6.75	6.62	6.54	6.37			
85	1.94	1.64	1.71	1.71	1.79	1.91	2.05	2.20	2.61	2.72	2.64	2.63	2.56	2.36	2.24	2.39			
90	0.00	0.00	0.00	0.00	0.00	0.00	0.01	0.02	0.05	0.03	0.01	0.00	0.00	0.00	0.00	0.00			
95	0.00	0.00	0.00	0.00	0.00	0.00	0.00	0.00	0.00	0.00	0.00	0.00	0.00	0.00	0.00	0.00			
100	0.00	0.01	0.01	0.01	0.01	0.02	0.02	0.02	0.00	0.00	0.00	0.00	0.00	0.00	0.00	0.00			
105	0.01	0.01	0.01	0.01	0.01	0.02	0.02	0.02	0.00	0.00	0.00	0.00	0.00	0.00	0.00	0.00			
110	0.01	0.01	0.01	0.01	0.01	0.02	0.02	0.02	0.00	0.00	0.00	0.00	0.00	0.00	0.00	0.00			
115	0.01	0.01	0.01	0.01	0.01	0.02	0.02	0.02	0.01	0.00	0.00	0.00	0.00	0.00	0.00	0.00			
120	0.01	0.02	0.02	0.02	0.02	0.02	0.02	0.02	0.00	0.00	0.00	0.00	0.00	0.00	0.00	0.00			
125	0.02	0.02	0.02	0.02	0.03	0.02	0.02	0.02	0.01	0.01	0.01	0.01	0.01	0.01	0.01	0.01			
130	0.02	0.03	0.03	0.03	0.03	0.03	0.03	0.03	0.01	0.01	0.01	0.01	0.01	0.01	0.01	0.01			
135	0.03	0.04	0.04	0.04	0.04	0.04	0.04	0.03	0.02	0.02	0.02	0.02	0.02	0.02	0.01	0.02			
140	0.05	0.05	0.05	0.05	0.06	0.06	0.05	0.05	0.02	0.02	0.02	0.02	0.02	0.02	0.02	0.02			
145	0.06	0.07	0.07	0.07	0.07	0.07	0.07	0.06	0.02	0.02	0.02	0.03	0.03	0.02	0.02	0.03			
150	0.07	0.08	0.08	0.08	0.09	0.09	0.08	0.08	0.03	0.03	0.03	0.03	0.03	0.03	0.03	0.03			
155	0.08	0.09	0.09	0.09	0.10	0.09	0.09	0.09	0.03	0.03	0.03	0.03	0.04	0.03	0.03	0.04			
160	0.09	0.10	0.10	0.10	0.10	0.10	0.10	0.10	0.04	0.04	0.04	0.04	0.04	0.04	0.04	0.04			
165	0.10	0.10	0.10	0.10	0.10	0.10	0.10	0.10	0.05	0.05	0.04	0.05	0.05	0.05	0.04	0.05			
170	0.09	0.09	0.09	0.09	0.09	0.09	0.09	0.09	0.05	0.05	0.05	0.05	0.05	0.05	0.05	0.05			
175	0.09	0.09	0.09	0.08	0.08	0.08	0.08	0.09	0.06	0.06	0.06	0.06	0.06	0.06	0.06	0.06			
180	0.07	0.07	0.07	0.07	0.07	0.07	0.07	0.08	0.07	0.07	0.07	0.07	0.07	0.07	0.07	0.07			

C Range: 0 - 360DEG
 C Interval: 22.5DEG
 Test Speed: HIGH
 Temperature:24.8DEG
 Operators:Water
 Test Date:2023-09-06

γ Range: 0 - 180DEG
 γ Interval: 1.0DEG
 Test System:EVERFINE GO-R5000_V2 SYSTEM V2.00.446
 Humidity:34%
 Test Distance:2.513m [K=1.0000]
 Remarks: Model No: UCL-31B-9G